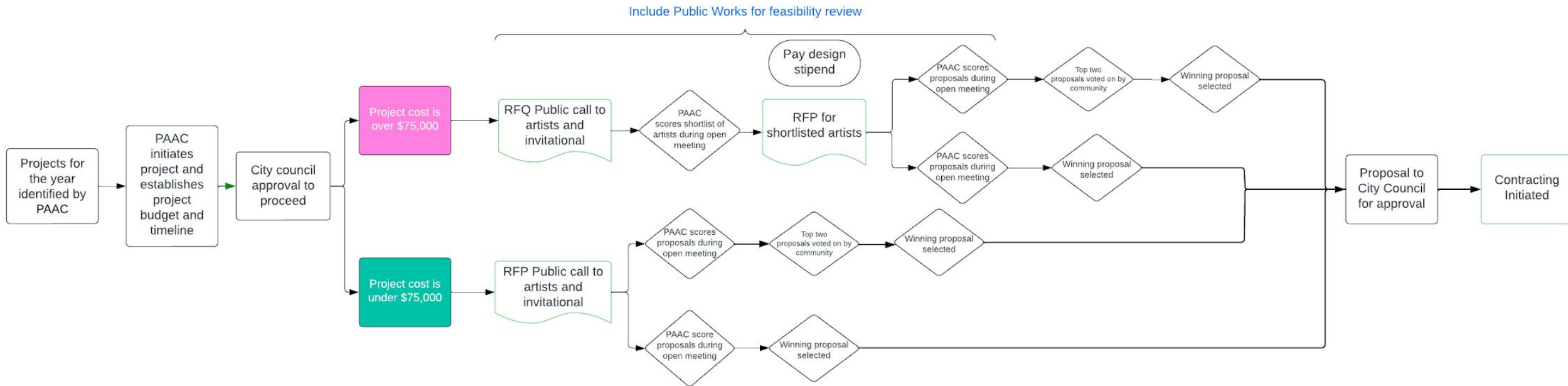


Public Art Selection Process for the City of Brisbane



Key:

PAAC: Public Art Advisory Committee

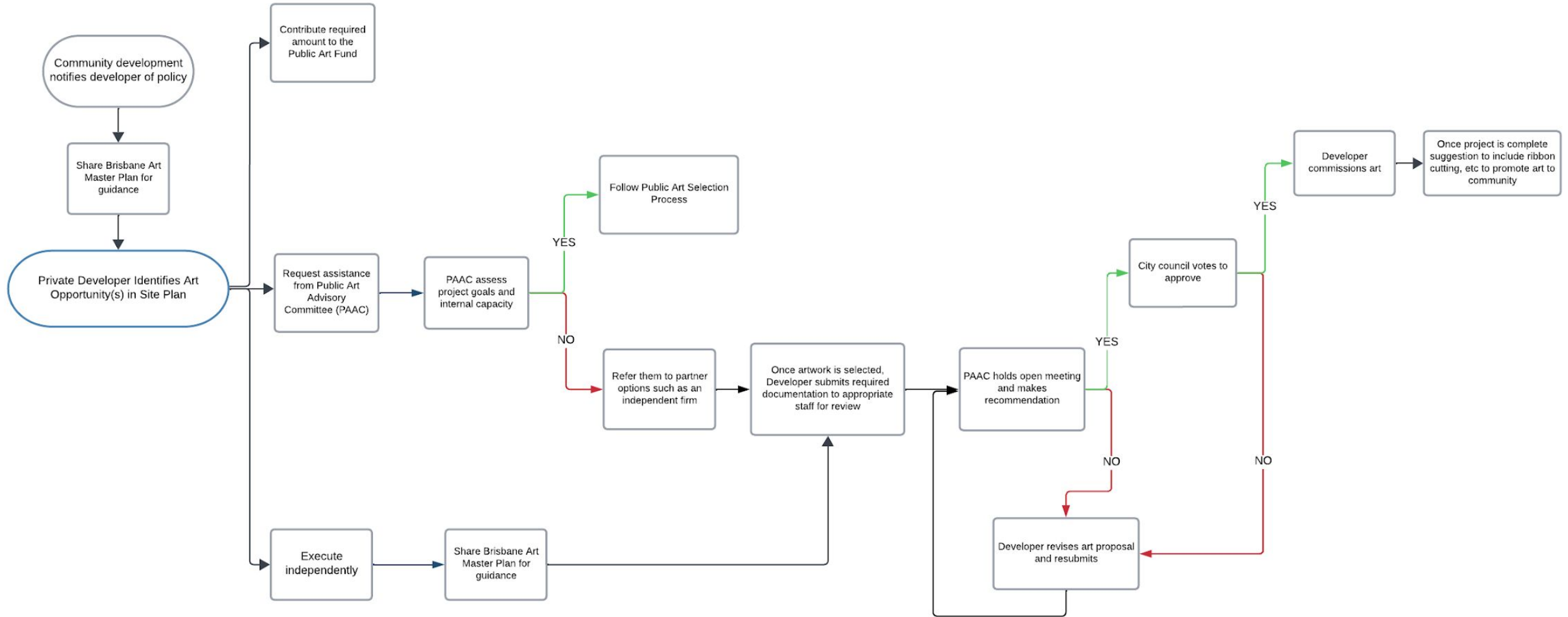
RFQ: Request for Qualifications

RFP: Request for proposal

Note:

All discussions and selections by the Public Art Advisory Committee are held during an open meeting (virtual and in-person) during which the public can provide input.

Public Art Process Selection Process for Private Developers

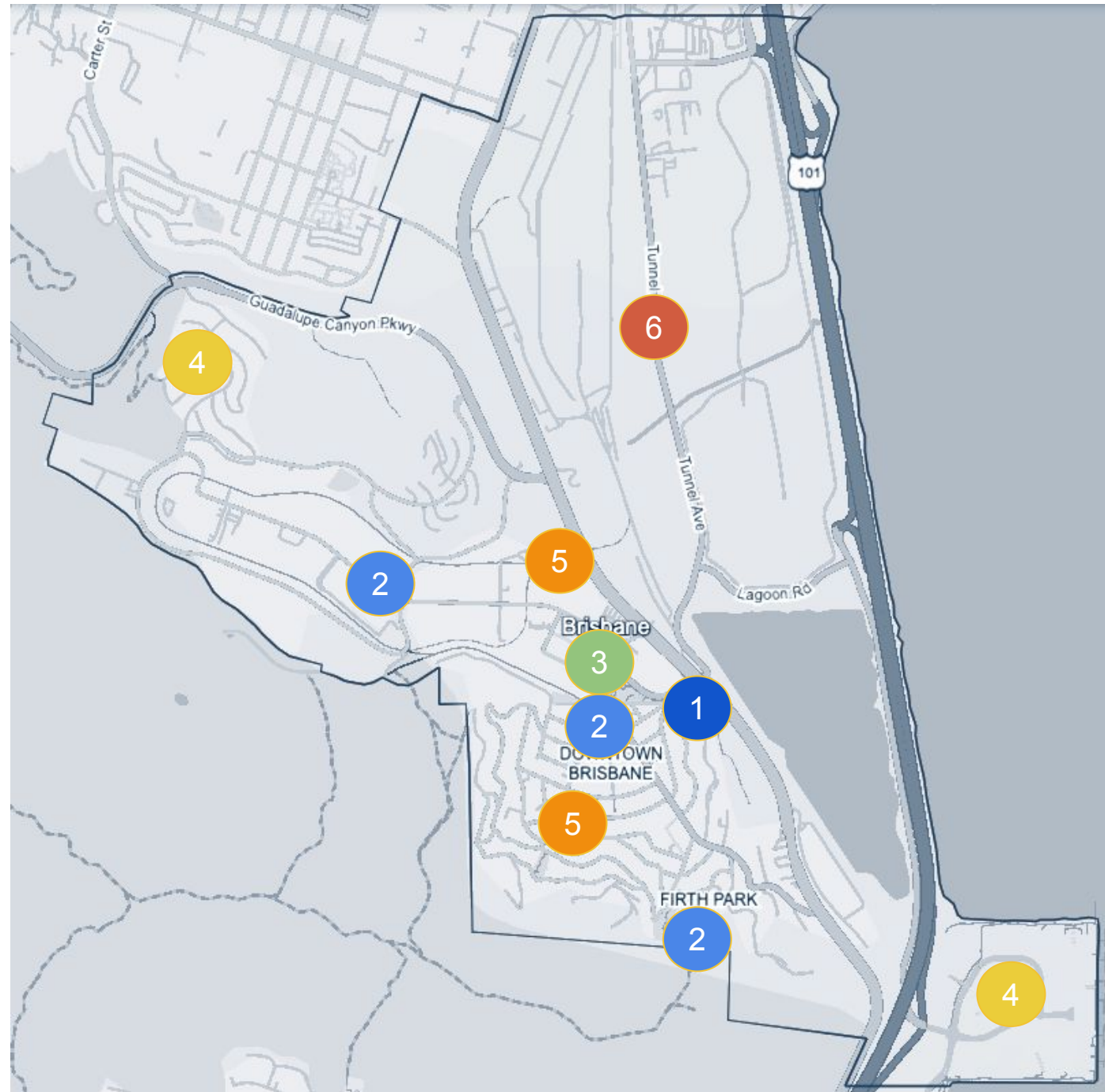


Art Location Planning

Over the next decade, Brisbane can enhance public spaces through artful experiences that align with the key recommendations and typologies outlined in this plan. The following pages describe key priority locations for public art. By focusing on these key locations, Brisbane can create a cohesive, inspiring public art collection that enriches daily life and solidifies the city's identity as a center for community-driven creativity.



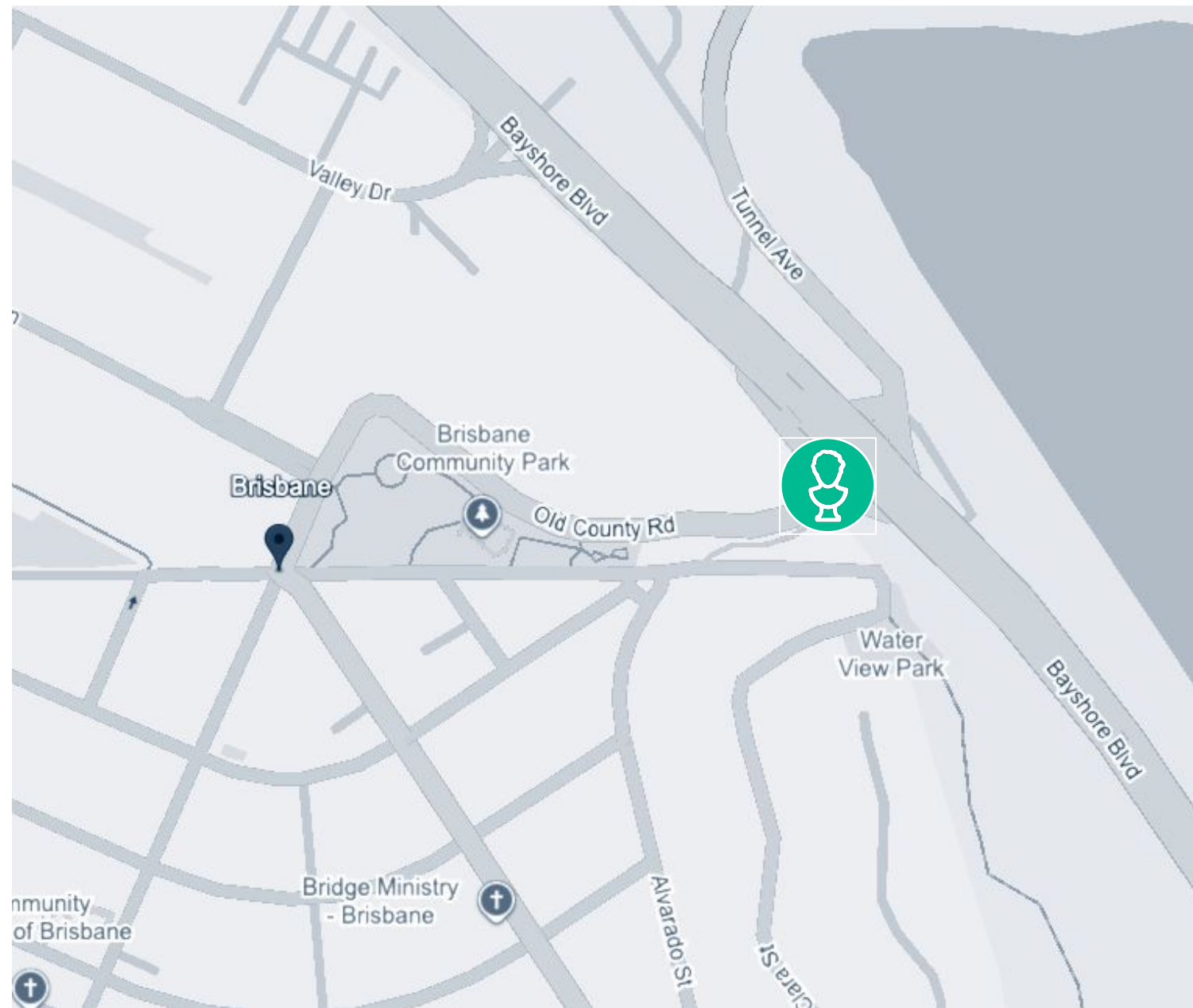
- 1. Entry Points and Gateways:** Begin with the city's main entry at Bayshore and Old County Road, introducing iconic public art that offers a memorable welcome and reflects Brisbane's unique identity.
- 2. Parks and Trails:** Incorporate "discovery" art along trails, starting with the Crocker Park Recreational Trail, by adding murals on adjacent buildings, artist-designed crosswalks, benches, and handrails. Small sculptures along pathways, like the Raccoon bronze by Spero Anargyros, create surprise moments of delight.
- 3. Skatepark:** Establish a rotating mural program on the skatepark prominent wall, refreshing the space every five years with community-selected art. This evolving mural will keep the skatepark vibrant and showcase diverse artistic perspectives.
- 4. Sierra Point and The Ridge:** Expand annual programs, like painting fire hydrants, to include newer areas like Sierra Point. In partnership with private developers, guide the integration of public art into these spaces to ensure cohesion with the city's broader Public Art Master Plan.
- 5. Neighborhood Installations and Pop-Ups:** Engage neighborhoods with temporary art like pop-up installations and street art in the tunnel. Doing so can foster local pride and provide unique, engaging experiences throughout Brisbane.
- 6. Baylands Development:** As the Baylands development progresses, work with developers to incorporate permanent public art at key connection points to unify the project with the city. Additionally, utilize construction fencing for temporary installations by local artists to keep the community engaged during development.





1

Entry Points and Gateways: Prioritizing iconic art at the main entry into Brisbane, located at Bayshore and Old County Road, can transform this busy intersection into a powerful cultural landmark that reflects the city's unique character and values. By showcasing art that resonates with Brisbane's identity, this gateway becomes more than just a passage—it becomes a memorable first impression for visitors and a source of pride for residents. Public art at this site could celebrate local history, natural beauty, and community diversity, inviting everyone to connect with the heart of Brisbane as they enter.

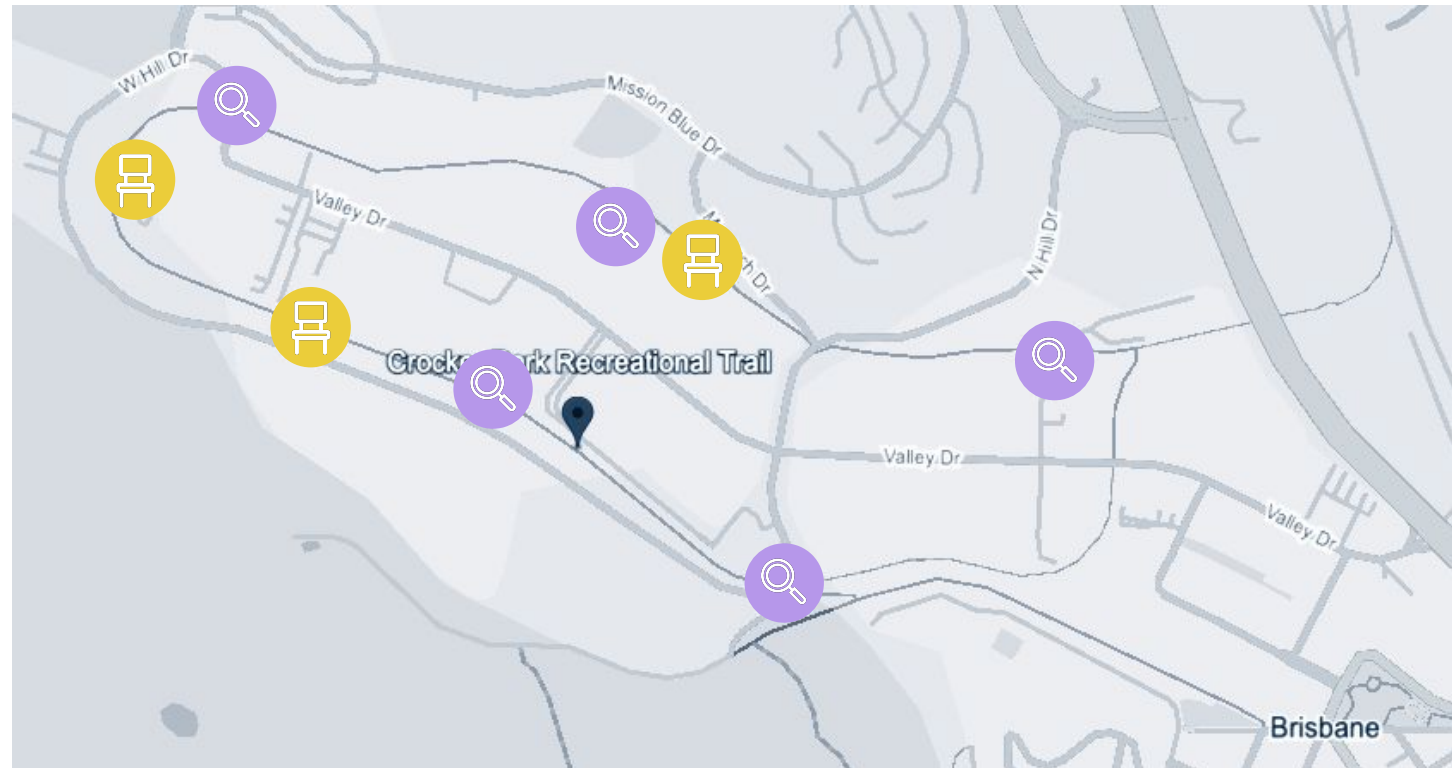




2

Parks and Trails: Incorporating art throughout Brisbane's parks and trails offers a unique opportunity to enhance public spaces with "discovery" art, guiding visitors on a journey of exploration and creativity. Murals on buildings and art-infused crosswalks can serve as both vibrant wayfinding tools and moments of surprise and delight. Functional art, like artist-designed benches and handrails, adds aesthetic appeal while serving practical needs. Small sculptures placed along trails, such as the beloved raccoon bronze sculpture by local artist Spero Anargyros, create delightful, unexpected moments that draw people in and foster a deeper connection to the natural landscape and the community's artistic spirit.

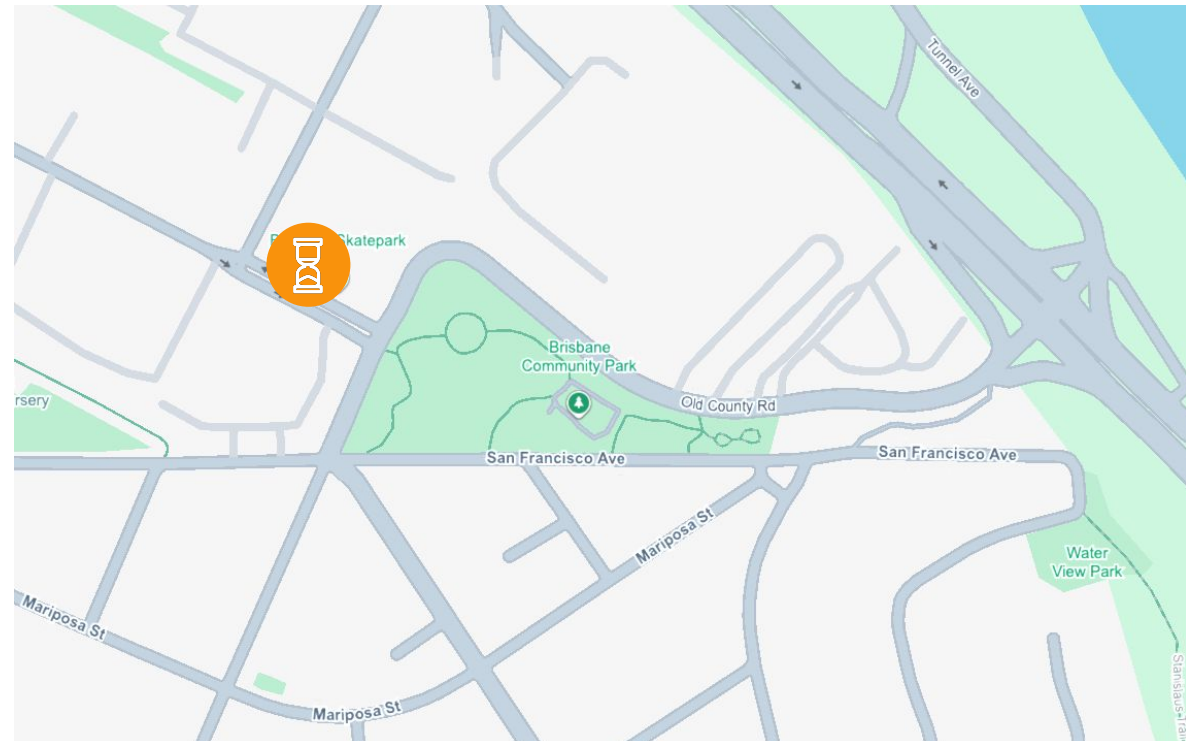
Focusing first on the Crocker Park Recreational Trail would allow Brisbane to create a vibrant outdoor gallery that celebrates local culture and engages the community. Collaborating with nearby businesses to place murals on buildings facing the trail and enhancing crosswalks with artistic designs would make the path a more colorful, inviting, and navigable space. This initial focus could set a precedent for future art projects throughout Brisbane's parks and trails, establishing the Crocker Park Recreational Trail as a model of creativity and community pride.





3

Skatepark: Creating a rotating mural at the skatepark offers a unique opportunity to showcase unique, community-chosen art on a prominent wall that serves as a focal point for visitors and locals alike. Every five years, the community can vote on a new design, bringing fresh energy to the space and allowing different artists to leave their mark on Brisbane. This evolving mural will not only enhance the skate park's visual appeal but also strengthen community engagement and pride.





4

Sierra Point and The Ridge: Continuing annual programs like painting fire hydrants not only enhances Brisbane's unique charm but fosters a sense of unity across the city. Expanding this tradition to newer developments, such as Sierra Point and The Ridge, invites all neighborhoods to participate in this creative expression, bridging established areas with newer ones through art. This expansion could allow residents and local artists to work together, celebrating Brisbane's growth and shared identity while bringing a playful, colorful touch to the cityscape.





5

Neighborhood Installations and Pop-Ups:

Temporary art installations bring dynamic, ever-evolving creativity to Brisbane's neighborhoods, offering residents and visitors fresh experiences each time they explore the city. Pop-up art in residential areas and rotating street art in the tunnel can spark community interest, foster local pride, and provide emerging artists with a visible platform. These temporary works create unique, engaging environments that encourage people to gather, connect, and celebrate Brisbane's artistic pulse, with each new piece adding to the city's rich and diverse cultural tapestry.



The Baylands development presents numerous opportunities to partner on public art that bridges the project with the larger Brisbane community. Incorporating public art at key connection points within Baylands can foster a sense of unity, linking this new development seamlessly to the city. Additionally, integrating temporary art installations by both emerging and established local artists during the construction phase, such as vibrant works on construction fencing, will maintain a strong connection to the community and help residents feel engaged with the project's progress. These installations can celebrate Brisbane's creativity, create a dynamic atmosphere, and preview the artistic potential of Baylands.

