

# City of Brisbane

## Recycling Update 2022



**Teresa Montgomery**  
**Sustainability Manager**  
**[Teresa@ssfscavenger.com](mailto:Teresa@ssfscavenger.com)**



# Data Summary:

Total Disposal in 2020 = 6,719 tons

Divided by population = 8 lbs per person per day

Divided by employment = 4.7 lbs per person per day

# Outreach:



## FOODWARE AWARE

REUSE. CHOOSE. REFUSE.



Why are Californians  
required to separate organic waste  
from garbage?



Plastic makes me sick!



Planning a party?  
Add me to the guest list!



# Outreach:

## Pro Tips For Food Waste Collection:



- ✓ Empty your kitchen pail into the green organics bin daily. Rinse and wipe your pail clean as needed.
- ✓ Use newspaper or paper bags to line your pail or wrap food scraps. Alternatively, you can use a paper box (like for takeout meals). These can be filled with food scraps, closed, and the full box placed in your green organics bin. You can even freeze the boxed or wrapped scraps and place in your green bin the night before collection.
- ✓ Inside your green organics bin, cover layers of food scraps with pizza boxes, other food soiled paper, or a layer of yard trimmings (if you have any). Putting a layer of newspaper or cardboard at the very bottom of your bin each week can be particularly helpful. Paper and yard trimmings help absorb moisture and odor.
- ✓ Sprinkle baking soda in your kitchen pail or green bin as needed to absorb moisture and odor.
- ✓ Clean your green organics bin as needed. When it is empty, carefully tip it over on a landscaped area, lightly rinse it out, and let dry with lid open. Wipe down with newspaper or a paper towel and then toss it inside.
- ✓ Keep your kitchen pail and green organics bin lids closed.



Please do **NOT** use plastic or bio/compostable plastic liner bags. They take too long to break down and thereby prevent our anaerobic digester from doing its job.

SOUTH SAN FRANCISCO  
**SCAVENGER**  
 COMPANY, INC.  
[www.ssfscavenger.com](http://www.ssfscavenger.com)

500 East Jamie Court  
 South San Francisco, CA 94080  
 Monday-Friday, 7am-4:30pm  
 Phone/Text: 650.589.4020  
 E-mail: [info@ssfscavenger.com](mailto:info@ssfscavenger.com)

## WASTEMATTERS

COMMERCIAL NEWSLETTER

APRIL 2022

### California law now requires organic waste to be separated from garbage.

Offices, retailers, restaurants, hotels, labs, apartment & condominium complexes, and other commercial, government, and industrial facilities must comply.

Contact us at 650.589.4020 to arrange for a green bin. If you don't already have blue bins for recyclable containers, paper or cardboard, be sure to inquire about those too!

To learn more, please visit:  
[www.ssfscavenger.com](http://www.ssfscavenger.com)  
[www.calrecycle.ca.gov/organics/slcp](http://www.calrecycle.ca.gov/organics/slcp)



I'm Ozzy the Organics Cart.  
 Please feed me your food scraps!



### QUESTIONS ABOUT COMPOST? OZZY HAS ANSWERS!

#### Q: Why must I use my green bin?

**A:** The food scraps, food-soiled paper and yard trimmings collected from green bins is processed into renewable fuel and compost. If placed in your grey bin, these items are not transformed into anything useful. Instead, they take up valuable (and dwindling) landfill space and release methane into the environment. Methane is a super pollutant that contributes to global warming and can make the air we breathe unhealthy.

#### Q: What happens to the compost made from materials we place in our green bins?

**A:** It is commonly used in California's agricultural areas to grow new crops. It is also sold or otherwise provided for commercial and residential use in parks, yards, roadsides and roadway medians, and more.



#### Q: Why is it so important to use compost?

**A:** Compost use closes the loop! Without a viable market for finished product, our composting efforts wouldn't be worthwhile. Plus, compost makes for healthy soil which sequesters carbon, retains moisture, and reduces runoff.

Do you have additional questions?  
 Email Ozzy at [info@ssfscavenger.com](mailto:info@ssfscavenger.com)

CALIFORNIA LAW REQUIREMENTS  
 COMPOST QUESTIONS & ANSWERS  
 KEEPING YOUR RECYCLABLES CLEAN  
 WHAT BELONGS IN WHICH BIN  
 ROLL-OFF BOX SERVICE  
 HELPFUL REMINDERS  
 PLEASE SHUT YOUR LIDS  
 BLUE LINE TRANSFER INFORMATION

SSFCSCAVENGER.COM

SSF  
 SCAVENGER  
 COMPANY  
 •  
 YOUR RECYCLING,  
 ORGANICS &  
 GARBAGE SERVICE  
 PROVIDER

500 East Jamie Court  
 South San Francisco,  
 CA 94080  
 Phone: 650.589.4020



# Lid Flipping (as required by SB 1383):



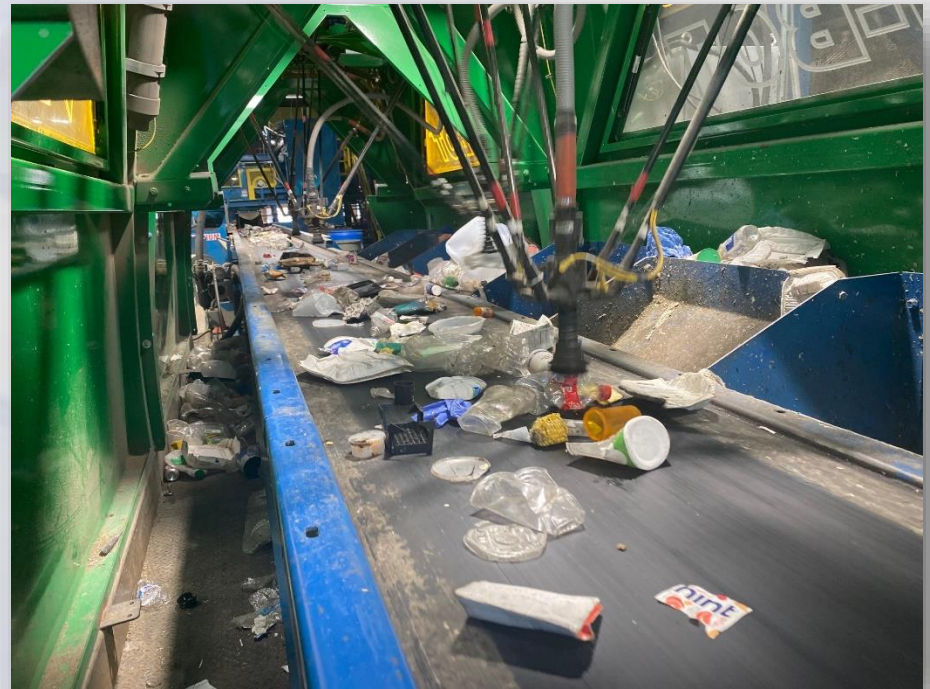
# Lid Flipping (as required by SB 1383):







# Enhanced Sorting:





# City of Brisbane

## Recycling Update 2022



**Teresa Montgomery**  
**Sustainability Manager**  
**[Teresa@ssfscavenger.com](mailto:Teresa@ssfscavenger.com)**

