



CITY COUNCIL AGENDA REPORT

Meeting Date: November 2, 2023

From: Noreen Leek, Parks & Recreation Director

Subject: Playground resurfacing project utilizing per capita grant funds from State Proposition 68

Community Goal/Result

Community Building, Safe Community

Purpose

Maintain safe and high-quality recreation facilities for community interaction.

Recommendation

Receive information regarding the Community Park playground resurfacing project and provide additional direction to staff if needed.

Background

The Prop 68 Per Capita grant funding program was placed on the State ballot via Senate Bill 5 (DeLeon, Chapter 852, statues of 2017), and approved by voters on June 5, 2018. Funds were made available for local park rehabilitation, creation, and improvement grants to local governments on a per capita basis. Grant recipients were encouraged to utilize awards to rehabilitate existing infrastructure and to address deficiencies in neighborhoods lacking access. Projects not serving a severely disadvantaged community required a 20% match and grantees were required to use per capita grant funds to supplement existing expenditures, rather than replace them.

In September 2020, the City Council adopted resolution No. 2020-58 approving application(s) for per capita grant funds from State Proposition 68. In December 2020, City staff submitted the formal application to the State.

Discussion

After many years of struggling to maintain and repair the existing poured-in-place (PIP) surfacing at the community park playground, the City recognized that full replacement was necessary. The lifespan of this type of playground surfacing is approximately 15 years. The adjacent sand play area has been a contributing factor in the rapid deterioration of the PIP surfacing which was installed in 2012 with the playground renovation. In addition to the adverse impacts the sand has had on the PIP surface, it also presents an increased risk of injury to parkgoers. (See site photos in Attachment 1.) Required by the State, a playground safety inspection was conducted in 2022 by a Certified Playground Safety Inspector. The formal report recommended full removal of the sand given the trip/fall hazards its presence creates. The report also requires removal of some of the smaller existing faux rocks given that they are now considered within a fall zone by today's playground safety standards. Removal of these elements is in the interest of public safety for all park users and failure to do so could expose the City to further liability.

In 2022, the City Council reviewed and considered the Capital Improvement Projects list which included the playground resurfacing project. At that time, staff identified it as a high-priority project. The project description included the following:

Excavate and replace the existing poured-in-place surfacing at the Community Park playground. The poured-in-place surfacing at the playground is in poor and rapidly deteriorating condition. It is beyond its useful life in its current condition and despite efforts to patch high-traffic areas as they have failed, the playground surfacing requires a complete overhaul. Excavation of the old material, removal of the adjacent sand area, site preparation, and installation of new surfacing is advised.

The FY22-23 Council-adopted budget included the 20% match amount of \$45,209.25 required by the City of Brisbane to complete the project. Subsequently, staff filed the necessary documentation required by the State, and through the City Manager's contracting authority, the City in July 2023 entered into a contract with Robertson Recreational Surfaces to conduct the work.

Robertson's scope of work includes installation of IPEMA (International Play Equipment Manufacturer's Association) certified TotTurf poured-in-place surfacing. PIP surfacing has been installed in parks around the world for more than 35 years. It is used industry wide as a standard application for playground surfaces given that it is ADA compliant and accessible, allowing for more inclusive play for youth, but also for caregivers of all abilities to engage with their children. Poured in place surfaces serve as accessible paths of travel for persons with disabilities since they are firm, stable, and slip resistant. The layers of TotTurf PIP surfacing (see cross-section sample in Attachment 2) include a top/wear layer comprised of virgin Ethylene Propylene (EPDM) rubber, followed by an impact layer made of clean, recycled Styrene Butadiene Rubber (SBR) installed over compacted base rock. EPDM is a non-toxic, FDA approved synthetic material, often used in food-grade applications. It is the highest quality rubber on the market given its UV resistant properties and durability. Robertson does not use raw, ground up recycled tires (i.e.: crumb rubber) in their TotTurf PIP surfacing. The binder for the two layers is a basic single component aromatic polyurethane agent. The thickness of the poured surfacing varies to meet specific playground equipment fall heights and complies with the American Disability Act (ADA), Consumer Product Safety Commission (CPSC) guidelines and American Society for Testing and Materials (ASTM) standards.

Fiscal Impact

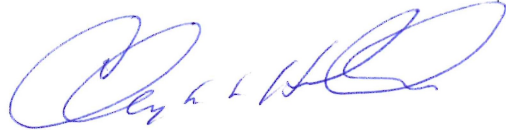
There is no additional fiscal impact resulting from the delivery of this project update. The project is primarily funded by the Prop 68 per capita grant through the State of California with a 20% match already allocated in the City budget approved by Council. Because the City has a binding contract with Robertson Recreational Surfaces, if the City does not proceed with this contract, or if the contractor agrees to revise the contract concerning the materials used or the scope of work, there could be fiscal impacts as described in a confidential memorandum from the City Attorney that has been provided to Council.

Attachments

1. Community Park Playground photos demonstrating the adverse impact of sand on PIP surfacing
2. PIP surfacing cross section sample



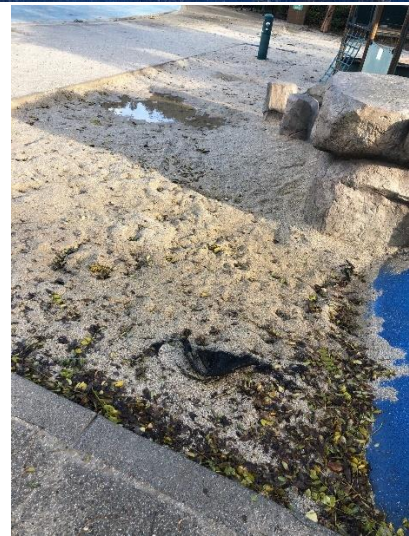
Noreen Leek, Parks & Recreation Director



Clay Holstine, City Manager

ATTACHMENT 1

Community Park Playground Photos



ATTACHMENT 2

Poured in Place installation cross-section sample demonstrating
ADA wheelchair accessible edge

