



## CITY COUNCIL AGENDA REPORT

**Meeting Date:** November 5<sup>th</sup>, 2020

**From:** Noreen Leek, Recreation Manager

**Subject:** Dog Park Resurfacing

### **Community Goal/Result**

Community Building

### **Purpose**

Maintain high-quality recreation facilities for community interaction.

### **Recommendation**

Review the three variations (*Attachment 1*) for resurfacing of the dog park using artificial turf and decomposed granite based on the recommendation from the Parks & Recreation Commission. Approve funding for the desired option.

### **Background**

On September 25<sup>th</sup>, 2019, the Recreation Facilities Subcommittee along with the City Council Parks & Recreation Liaisons met with stakeholders at the dog park. The purpose of this meeting was to engage the stakeholders and gather input regarding their overall preferences at the park. Although the majority of the meeting was spent discussing park amenities such as seating, water, shade, etc., several residents initiated conversations about park resurfacing.

In the past, dog park users have expressed a preference for grass, and have been vocal about their dissatisfaction regarding the overall condition of the grass. Given the nature of use on the grass at the dog park and that it is a highly concentrated area, it is important to note that the City's approach towards maintenance of the dog park will not result in the turf condition mirroring that of the Community Park. In recent years, there seems to be a shift towards support for alternate surfacing options such as artificial turf, gravel, or decomposed granite.

P&R staff reviewed 24 local dog parks and found only 3 facilities to have any real grass (*Attachment 2*). In all 3 cases, the grass areas were significantly larger than that of Brisbane's (which means less concentrated use) and the condition of the grass at these locations was either similar to or worse than the condition of Brisbane's.

On January 8<sup>th</sup>, 2020 the Parks & Recreation Commission addressed this item, reviewed various alternative surfacing options and estimated costs, and discussed the pros and cons to each. They discussed the use of alternate materials including pea gravel, wood chips, artificial turf, and hardscape options including decomposed granite. After reviewing the surfacing at other dog parks and assessing the best fit for the Brisbane Dog Park, the Commission voted unanimously to recommend to Council to proceed with resurfacing of the park including a

majority of hardscape surface (i.e. decomposed granite) and some smaller patches of artificial turf.

K9Grass is specially designed for dogs and is installed in dog parks throughout the country. The features that make it superior for this type of installation include: a natural design that is gentle on paws, permeability to allow liquid waste to pass through, antimicrobial protection and non-toxic materials. Lastly, the design eliminates the need for traditional infill which lends itself to a cleaner and safer design that is easier to maintain.

### **Discussion**

After presenting this item to Council on September 17<sup>th</sup>, staff was directed to return with a couple of variations for Council to consider along with their estimated costs. The three options for review are outlined in Attachment 1.

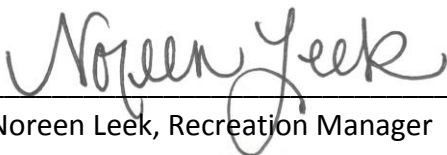
### **Fiscal Impact**

The existing grass area of the dog park is approximately 4,200 square feet. The scope of work will include excavation/sub grading, and installation of base plus surfacing. The budget-level estimate for the initial proposal which includes approximately 1,000 square feet of turf area, (shared in Attachment 1 as Option 1) is \$60,000. The estimated cost for Option 2, a larger single-strip of turf area approximately 2,000 square feet is \$80,000. And finally, the estimated cost for Option 3 covering the full existing grass area with artificial K9 turf is \$120,000.

Research conducted by the City's Public Works team suggests that the lifespan of this surfacing is 15-20 years and ongoing maintenance costs would be significantly reduced given that mowing, frequent watering, annual reseeding, and new sod would not be required. Ongoing maintenance would include minor watering of the artificial turf for sanitation purposes, treatment with bacterial enzymes for odor management, occasional vacuuming of the turf, and top coating of the hardscape surfacing as needed. The City's Public Works team estimates that ongoing maintenance of the dog park would be reduced by about half of what it is today.

### **Attachments**

1. Conceptual designs and resurfacing notations
2. Dog Park comparison
3. K9 grass spec sheet



---

Noreen Leek, Recreation Manager

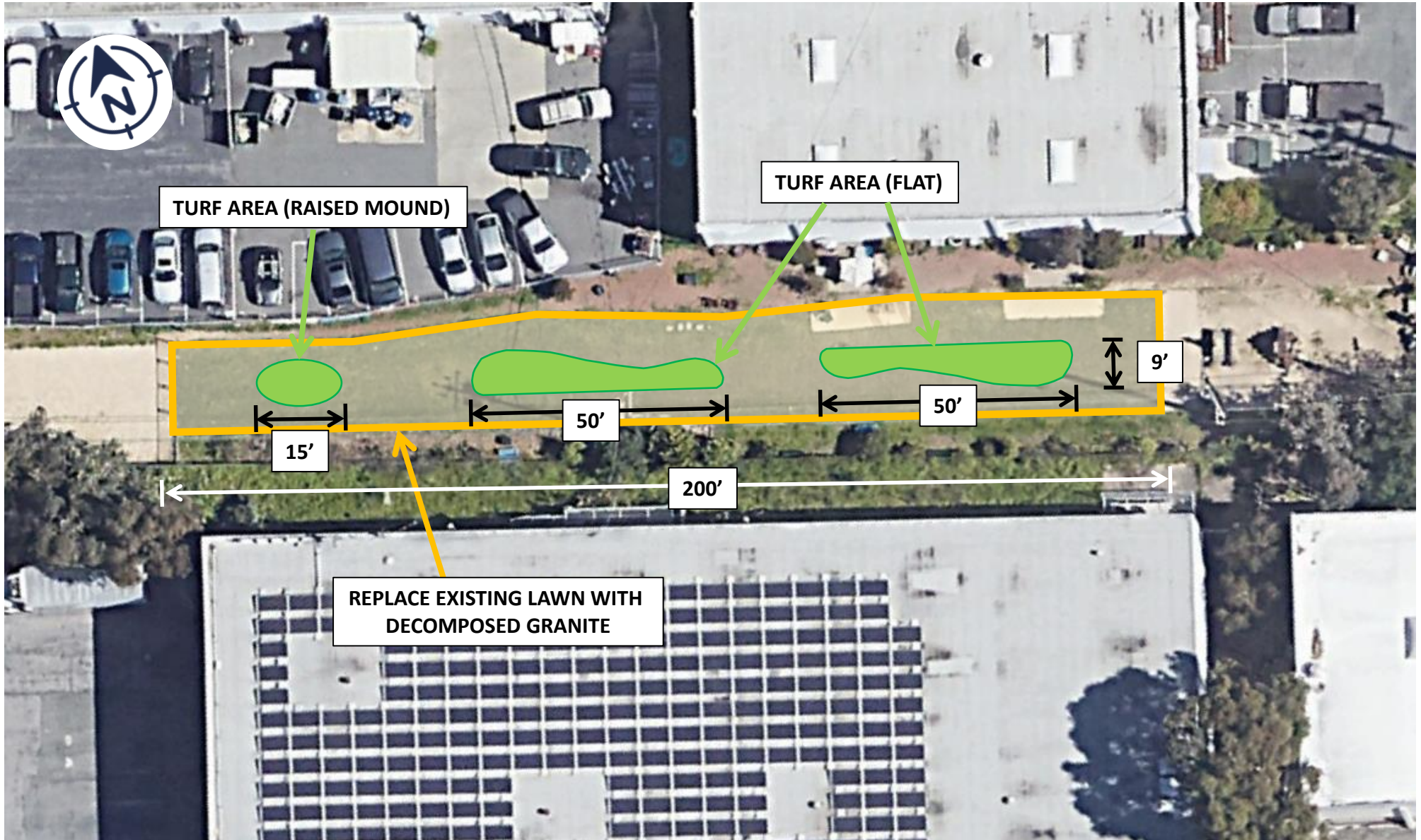


---

Clay Holstine, City Manager

Option 1

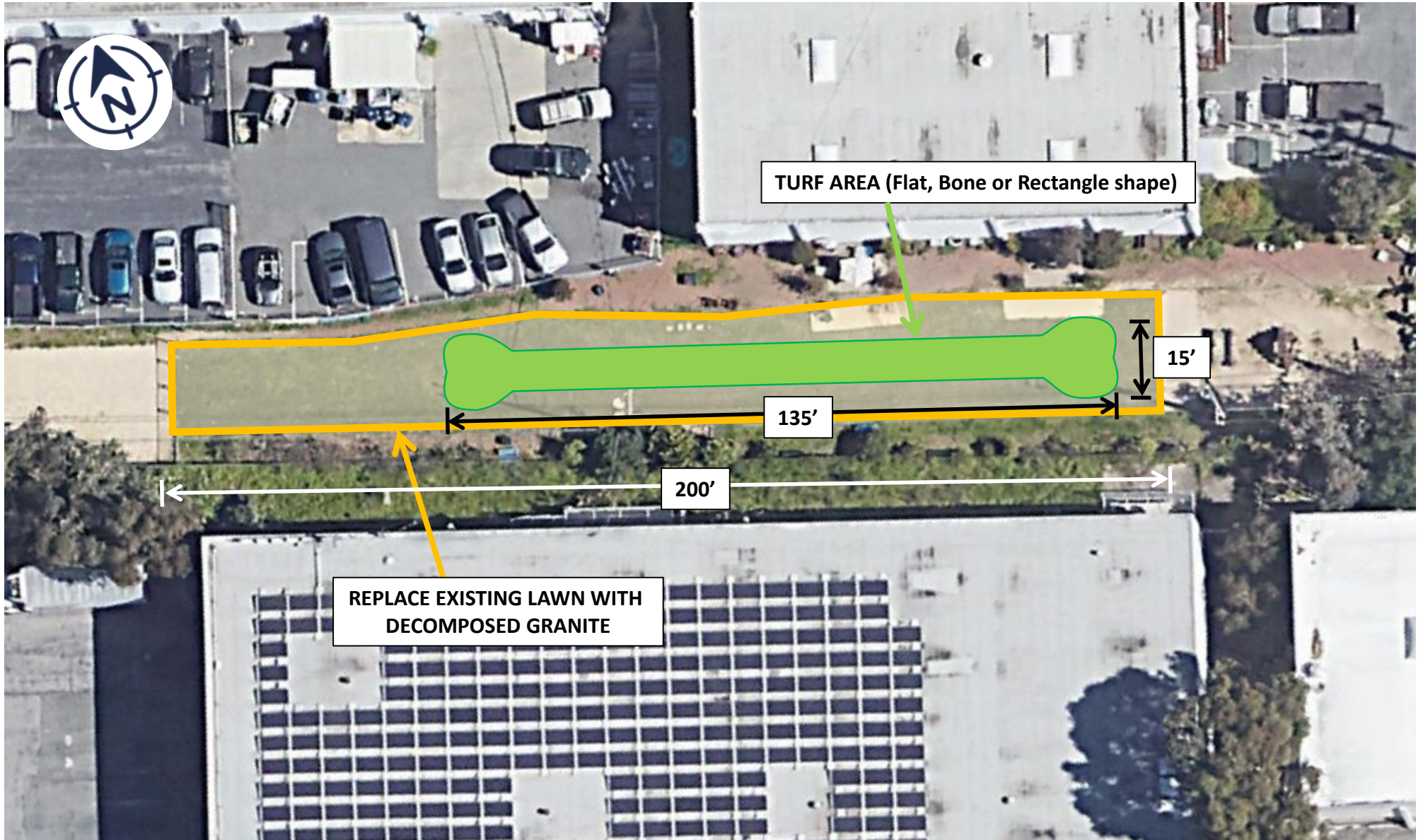
**TURF AREA  
APPROX. 1,000 SQ FT**





Option 2

**TURF AREA  
APPROX. 2,000 SQ FT**





Option 3



**TURF AREA  
APPROX. 4200 SQ FT**



# Dog Park Comparison






Park Name	Location	Surfacing	
Centennial Way Dog Park	South San Francisco	DG + Artificial Turf	
Commodore Park	San Bruno	Mixed, mostly dirt & weeds (not maintained grass)	
Seal Point	San Mateo	Dirt/DG	
Burlingame Dog Exercise Park	Burlingame	Dirt/DG	
St. Mary's Dog Play Area	San Francisco (R&P)	Grass + Asphalt (comparable grass condition to Brisbane's however a much larger area and less concentrated use)	

## ATTACHMENT 2

San Carlos Dog Park	San Carlos	Dirt/DG	
Foster City Dog Park	Foster City	Artificial Turf + DG	
Cipriani Dog Park	Belmont	Dirt/DG	
Sanchez Dog Park	Pacifica	Dirt/DG	
Upper Douglas Dog Park	San Francisco	Grass + Dirt (comparable grass condition to Brisbane's however a much larger area and less concentrated use)	



# ATTACHMENT 2





Alemanya Dog Park	San Francisco	Dirt/DG	
Main Street Dog Agility Park	Redwood City	Dirt/DG	
Smith Field Coastside Dog Park	Half Moon Bay	Wood Chips	
Mitchell Park Dog Park	Palo Alto	Dirt/DG	
Bair Island Dog Park	Redwood City	Artificial Turf	



## ATTACHMENT 2

Village Green Dog Park	Mountain View	Artificial Turf	
Willow Oaks Dog Park	Menlo Park	Grass + Dirt (grass is not maintained – worse condition)	
Golden Gate Park Dog Training Area	San Francisco	Dirt	
Rincon Hill Dog Park	San Francisco	DG	
Mission Bay Dog Park	San Francisco	DG + Artificial Turf	

## ATTACHMENT 2

Lafayette Park	San Francisco	Artificial Turf	
SoMa West Dog Park	San Francisco	Artificial Turf	
Moscone Dog Park	San Francisco	Artificial Turf	
Brotherhood Way Dog Park	San Francisco	DG	

**TOTAL NUMBER OF PARKS ASSESSED: 24**

**TOTAL NUMBER OF PARKS WITH ANY GRASS: 3**

# K9Grass<sup>®</sup>

## ATTACHMENT 3

K9Grass is the artificial grass designed specifically for dogs. With its exclusive flow-through backing, short dense blade structure, and antimicrobial protection, K9Grass offers a cleaner, safer, better environment for pets.



**K9Grass Lite**

Lighter version of K9Grass Classic. Great for indoors or large areas.



**K9Grass Classic**

The original pet-friendly grass. Durable, drainable, cleanable, and antimicrobial.



## No More Mud!

### BACKYARDS AND DOG RUNS

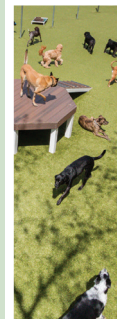
Say goodbye to cold concrete, gravel, mulch, muddy yards, and dirty paws—K9Grass is the solution you have been looking for.

### KENNELS, BOARDING FACILITIES AND DOG PARKS

Pet facilities benefit from the long-term savings, added cleanliness, and increased revenues they see after installing K9Grass. Clean, safe, beautiful and easy to maintain—K9Grass is everything you want and need from a surfacing product.

### About ForeverLawn

ForeverLawn provides innovative synthetic grass products to create better landscapes worldwide. In areas where real grass is difficult to grow or maintain—due to high traffic or poor conditions— ForeverLawn offers a natural-looking alternative that is beautiful, functional, and durable. ForeverLawn—Grass without limits.<sup>®</sup>



**The synthetic grass designed specifically for dogs!**

M0060 Rev. 02/19



866.992.7876 • foreverlawn.com • K9Grass.com

**ForeverLawn<sup>®</sup>**



# K9Grass®

## PRODUCT SPECIFICATIONS

K9Grass is the synthetic grass designed specifically for dogs. Its unique features help promote a cleaner, safer, better environment for pets.



With its exclusive flow-through backing, short dense blade structure, and antimicrobial protection, K9Grass is the ideal surface for both residential and commercial pet areas.



COMPONENTS	K9Grass Lite	K9Grass Classic
YARN TYPE	<ul style="list-style-type: none"> <li>Primary: Polyethylene monofilament</li> <li>Secondary: Heat set textured nylon monofilament</li> </ul>	<ul style="list-style-type: none"> <li>Primary: Polyethylene monofilament</li> <li>Secondary: Heat set textured nylon monofilament</li> </ul>
YARN COLOR	<ul style="list-style-type: none"> <li>Primary: Summer green</li> <li>Secondary: Turf green</li> </ul>	<ul style="list-style-type: none"> <li>Primary: Summer green</li> <li>Secondary: Turf green</li> </ul>
YARN COUNT	<ul style="list-style-type: none"> <li>Primary: 5,000/4</li> <li>Secondary: 4,200/8</li> </ul>	<ul style="list-style-type: none"> <li>Primary: 5,000/4</li> <li>Secondary: 4,200/8</li> </ul>
CONSTRUCTION	<ul style="list-style-type: none"> <li>Knitted</li> </ul>	<ul style="list-style-type: none"> <li>Knitted</li> </ul>
BLADE HEIGHT	<ul style="list-style-type: none"> <li>7/8"*</li> </ul>	<ul style="list-style-type: none"> <li>7/8"*</li> </ul>
FACE WEIGHT	<ul style="list-style-type: none"> <li>56 ounces*</li> </ul>	<ul style="list-style-type: none"> <li>72 ounces*</li> </ul>
TOTAL PRODUCT WEIGHT	<ul style="list-style-type: none"> <li>71 ounces*</li> </ul>	<ul style="list-style-type: none"> <li>87 ounces*</li> </ul>
BACKING	<ul style="list-style-type: none"> <li>Flow-through backing</li> </ul>	<ul style="list-style-type: none"> <li>Flow-through backing</li> </ul>
ANTIMICROBIAL PROTECTION	<ul style="list-style-type: none"> <li>AlphaSan®</li> </ul>	<ul style="list-style-type: none"> <li>AlphaSan®</li> </ul>
SEAMING	<ul style="list-style-type: none"> <li>Turf adhesive</li> </ul>	<ul style="list-style-type: none"> <li>Turf adhesive</li> </ul>
INFILL	<ul style="list-style-type: none"> <li>NONE</li> </ul>	<ul style="list-style-type: none"> <li>NONE</li> </ul>

\*Product heights shown may have a variance of 1/8" and product weights shown may have a variance of 2%.

WHAT MAKES K9GRASS UNIQUE?	
<b>Durable</b>	Dense interlocking construction of high-grade materials
<b>Drainable</b>	Unique knitted flow-through backing
<b>Cleanable</b>	Short, dense blade construction requiring no infill greatly enhances cleanability
<b>Safe</b>	Integral AlphaSan® antimicrobial protection built-in

M0070 Rev. 02/19



866.992.7876 • foreverlawn.com • K9Grass.com

