



CITY COUNCIL AGENDA REPORT

Meeting Date: May 2, 2024

From: Director of Public Works/City Engineer

Subject: Solid Waste Collection Rate Adjustment

Community Goal/Result Ecological Sustainability

Purpose To review rate adjustments submitted by one of the city's solid waste franchisees.

Recommendation Receive South San Francisco Scavenger's 2024 rate increases.

Background

The city has two Franchise Agreements dated November 20, 2014 for the provision of waste collection services, one with South San Francisco Scavenger Company (Scavenger) in Solid Waste Collection Zones 1(A&B) and 2, and one with Recology Brisbane in Solid Waste Collection Zone 3. Both agreements have language specifying under what conditions a rate increase may occur.

Discussion

Scavenger did submit a request for rate increase; their proposed rates were reviewed by staff and found to be in accordance with their franchise agreement. Pursuant to each agreement, “. . . not later than June 30th of the year of the Notice of Intention, the City Council shall act upon the new maximum rates as appropriate, with any new maximum rates to become effective on July 1st of the same year.”

As noted in the attached letter from Scavenger, the franchise agreement adjusts every third year using a formula based on the survey of thirty-two agencies specified in the agreement. The rate increases for the various services range from 5.67% to 9.2%. The increase for residential property service is 6.7% Last Year's approved rate increase was 3.9%.

With the company completing their calculations per the agreement, there is no discretionary action for the Council to take.

Fiscal Impact The effective date of the new rates is July 1, 2024.

Measure of Success

Compliance with the previously agreed upon terms and conditions for rate adjustments.

Attachments

1. Recology Brisbane's letter of 3/31/24 and redacted rate adjustment language
2. Solid Waste Collection Zone Maps

R.L. Breault

Randy Breault, Public Works Director

Clay Holstine

Clay Holstine, City Manager

SOUTH SAN FRANCISCO
SCAVENGER
— COMPANY, INC. —

March 31, 2024

Director Randy Breault, P.E.
Public Works-Marina Services-Emergency Services
City of Brisbane
50 Park Lane
Brisbane, CA 94005

Dear Director Breault,

In accordance with the terms of Section 6.4 of the Franchise Agreement, Modification Based on Neighboring Cities' Rates, please accept this letter and the enclosed data from our survey of solid waste rates, and the proposed rate chart as our application for rate modification.

The enclosed survey data was gathered by Teresa Montgomery, Sustainability Manager, using the same methodologies as in previous surveys. Ms. Montgomery will assist during your review and provide further information as needed. As you will see from the attached reports, the five benchmark rates lead to adjustments ranging from 9.20% to 5.67%, depending on the type of service.

A proposed rate schedule is attached. As per the Franchise Agreement, the rate adjustments would be effective as of July 1, 2024, if approved.

As you know, the franchise agreement has a three-year cycle, and rates are intended to be adjusted every third year based on this survey method, and in the other two years, based on changes in the Consumer Price Index. In comparison, you can see that rates in neighboring cities have significantly increased since the last survey in 2021.

There are many factors putting upward pressure on rates in neighboring cities. Beginning in 2018, China began enforcing their China Sword Policy, which effectively shut down the worldwide markets for recyclable materials, especially cardboard and plastics. The values of these materials continue to sustain downward pressure due to this policy, and in fact, affected most of the materials traditionally recycled through typical recycling programs.

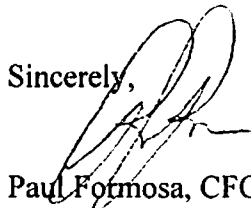
At the same time, California recycling laws have continued to require more and more diversion from landfill. AB 341 implemented mandatory recycling for commercial businesses, public entities and multi-family properties, and over time, has magnified the

effect of the China Sword Policy. AB 1826, mandated commercial organics recycling, and since 2021, great effort has been used to bring as many generators into compliance as possible, as the threshold for compliance continued tighten. Currently, SB 1383 has moved to the forefront, with a mandate for a 75% reduction in organic waste, where enforcement has begun this year in 2024. In order to meet these requirements, new services and personnel have been added, and existing ones modified, to meet the compliance requirements of this bill. These costs are being reflected in the rates for service.

The economic effects of recovery from the pandemic are putting pressure on rates as well. Since 2021, there has been a sharp increase in the cost of labor and materials, primarily due to the general cost of living and general economic inflation. This has ultimately lead to a delay in acquisition of critical infrastructure, such as new trucks and equipment, industry wide. There has been efforts industry wide to align rates more closely with the current cost of labor and materials.

Thank you for your consideration of this matter, and we are, of course, available to meet and confer at your convenience, as you desire.

Sincerely,



Paul Fotmosa, CFO
South San Francisco Scavenger Company, Inc.

**SOUTH SAN FRANCISCO SCAVENGER, INC.
RATES AND CHARGES EFFECTIVE JULY 1, 2024
CITY OF BRISBANE, CALIFORNIA**

		<u>Current Rates</u>	<i>Proposed change</i>	<u>Proposed Maximum Rates</u>
1. RESIDENTIAL PROPERTY SERVICE -				
Single family, and up to four units. As per section 2.13				
Rate is per month, one pickup per week				
Includes 64 gallon weekly curbside recycling toter service				
Includes weekly mixed organic materials / yardwaste toter service				
20	Gallon Trash Toter	26.79	6.70%	28.58
32	Gallon Trash Toter	42.85	6.70%	45.72
64	Gallon Trash Toter	85.70	6.70%	91.44
2. COMMERCIAL AND MULTIPLE UNIT RESIDENTIAL PROPERTY CAN SERVICE-				
Multiple Unit Residential Property, 5 or more units, as per section 2.14				
Rate is per month, one pickup per week, for Solid Waste and / or Source Separated Organic Materials				
Includes Source Separated Recyclable Materials				
0 - 30	Gallons	37.03	6.78%	39.54
31 - 32	Gallons	39.54	6.78%	42.22
33 - 40	Gallons	49.34	6.78%	52.69
41 - 45	Gallons	55.61	6.78%	59.38
46 - 50	Gallons	67.88	6.78%	72.48
51 - 64	Gallons	79.00	6.78%	84.36
3. COMPACTED YARDAGE				
Residential, Multi Unit Residential, Commercial, Industrial Customers				
Per Cubic Yard, per pickup		78.28	9.20%	85.48
4. DEBRIS BOXES				
Temporary / One Time Use				
Residential, Multi Unit Residential, Commercial, Industrial Customers				
Rate is for each pickup				
5 yard	Container, 1 ton limit	335.46	5.67%	354.48
7 yard	Container, Dirt - Rock - Concre	732.41	5.67%	773.94
14 yard	Container, 3 ton limit	732.41	5.67%	773.94
20 yard	Container, 5 ton Limit	997.01	5.67%	1,053.54
30 yard	Container, 6 ton limit	1,438.08	5.67%	1,519.62
Rental Charge (per day, over 3 days for 5 yard and over 7 days for others)				
		33.04	5.67%	34.91

**SOUTH SAN FRANCISCO SCAVENGER, INC.
RATES AND CHARGES EFFECTIVE JULY 1, 2024
CITY OF BRISBANE, CALIFORNIA**

	<u>Current Rates</u>	<i>Proposed change</i>	<u>Proposed Maximum Rates</u>
4. DEBRIS BOXES (continued)			
Permanent Commercial and Industrial use			
7 yard Container, Dirt - Rock - Concre	617.49	5.67%	652.50
14 yard Container, 3 ton limit	617.49	5.67%	652.50
20 yard Container, 5 ton Limit	882.19	5.67%	932.21
30 yard Container, 6 ton limit	1,323.31	5.67%	1,398.34
Overweight Charge			
Per ton over limit	191.02	5.67%	201.85
5. CONTAINER SERVICE			
Residential, Multi Unit Residential, Commercial, Industrial Customers			
Rate is per month, one pickup per week, for Solid Waste			
and / or Source Separated Organic Materials			
Includes Source Separated Recyclable Materials			
A) Regular Pickup (Rate per month, one pickup per week)			
1/2 - yard (96 gal) Container	158.24	5.72%	167.29
1 - yard Container	316.46	5.72%	334.56
2 - yard Container	390.27	5.72%	412.59
3 - yard Container	585.37	5.72%	618.85
4 - yard Container	780.37	5.72%	825.01
5 - yard Container	975.49	5.72%	1,031.29
6 - yard Container	1,170.59	5.72%	1,237.55
B) On Call Pick-up Per yard			
Per pick-up, per yard	45.08	5.72%	47.66
Plus Container Rental per Month			
Rental charges (per month)			
1 - yard Container	70.42	5.72%	74.45
2 - yard Container	76.15	5.72%	80.51
3 - yard Container	81.87	5.72%	86.55
4 - yard Container	87.97	5.72%	93.00
5 - yard Container	99.59	5.72%	105.29
6 - yard Container	105.70	5.72%	111.75

**SOUTH SAN FRANCISCO SCAVENGER, INC.
RATES AND CHARGES EFFECTIVE JULY 1, 2024
CITY OF BRISBANE, CALIFORNIA**

6. In the case of any additional service not described in the Agreement, Scavenger Company shall charge such amount as is agreed to by the customer.

7. Trash Container Management Policy Fees

Maximum fees allowed pursuant to approved Policy, as per Section 5.1.

Maximum fee consists of Admin Fee plus Extra Trip Fee for containers 1 yard and up.

Residential, Multi Unit Residential, Commercial, Industrial Customers

	<u>Current Rates</u>	<i>Proposed change</i>	<u>Proposed Maximum Rates</u>
	<u>Admin fee</u>		<u>Admin Fee</u>
<u>Container Size</u>			
30 gallon	30.00	-	\$ 30.00
32 gallon	30.00	-	\$ 30.00
40 gallon	30.00	-	\$ 30.00
45 gallon	30.00	-	\$ 30.00
55 gallon	30.00	-	\$ 30.00
64 gallon	30.00	-	\$ 30.00
96 gallon	30.00	-	\$ 30.00
1 yard	30.00	-	\$ 30.00
1.5 yard	30.00	-	\$ 30.00
2 yard	30.00	-	\$ 30.00
3 yard	30.00	-	\$ 30.00
4 yard	30.00	-	\$ 30.00
5 yard	30.00	-	\$ 30.00
6 yard	30.00	-	\$ 30.00
<u>Container Size</u>	<u>Extra Trip Fee</u>		<u>Extra Trip Fee</u>
1 yard	73.03	5.72%	\$ 77.21
1.5 yard	109.55	5.72%	\$ 115.81
2 yard	90.06	5.72%	\$ 95.21
3 yard	135.09	5.72%	\$ 142.81
4 yard	180.09	5.72%	\$ 190.39
5 yard	225.11	5.72%	\$ 237.99
6 yard	270.14	5.72%	\$ 285.59

Extra Trip Fee calculated as approved monthly 5.A) Container Service rates (one pickup per week) times 12 months per year divided by 52 weeks per year.

2024 Survey Results - Brisbane

City	Residential 32-gal Converted	Commercial 32-gal Converted	2-yard Bin	14-yard Box Converted	Compacted Yard Converted
Alameda	\$49.70	\$44.28	\$378.60	\$1,064.98	\$84.63
Burlingame	\$32.81	\$32.81	\$414.14	\$905.46	\$89.75
Campbell	\$39.08	\$18.07	\$263.49	\$597.04	\$59.83
Castro Valley	\$53.39	\$54.34	\$702.97	\$766.81	\$52.32
Cupertino	\$42.19	\$31.50	\$237.84	\$584.37	\$56.30
Daly City	\$33.85	\$32.81	\$514.77	\$826.24	\$50.42
El Cerrito	\$59.71	\$62.33	\$890.00	\$630.00	\$158.68
El Sobrante	\$39.63	\$49.42	\$463.79	\$1,163.39	\$123.38
Fremont	\$46.84	\$24.84	\$204.89	\$576.16	\$83.29
Gilroy	\$43.00	\$43.00	\$285.57	\$485.79	\$65.50
Hayward	\$42.63	\$34.50	\$327.55	\$538.78	\$64.80
Hercules	\$42.21	\$48.78	\$541.58	\$1,163.39	\$123.38
Los Altos	\$48.45	\$48.44	\$380.17	\$1,016.55	\$73.47
Los Gatos	\$41.82	\$22.35	\$325.94	\$666.09	\$66.60
Martinez	\$40.36	\$43.08	\$370.31	\$475.34	\$76.05
Menlo Park	\$53.14	\$77.30	\$249.39	\$639.99	\$118.30
Millbrae	\$43.05	\$39.73	\$392.11	\$735.77	\$78.63
Monte Sereno	\$48.30	\$26.48	\$386.00	\$649.44	\$62.02
Morgan Hill	\$28.01	\$21.91	\$319.05	\$446.83	\$58.00
Palo Alto	\$50.07	\$38.63	\$361.52	\$754.79	\$73.25
Piedmont	\$91.80	\$83.93	\$513.25	\$1,066.51	\$89.05
Pinole	\$39.17	\$47.95	\$517.62	\$1,163.39	\$123.38
Pittsburg	\$54.54	\$28.13	\$405.95	\$665.70	\$83.10
Richmond	\$43.57	\$53.58	\$517.33	\$1,163.39	\$123.38
San Bruno	\$37.79	\$52.92	\$444.00	\$643.22	\$82.13
San Leandro	\$39.18	\$27.50	\$347.66	\$858.20	\$72.11
San Mateo	\$37.93	\$37.18	\$340.45	\$687.79	\$100.20
San Pablo	\$35.05	\$44.64	\$466.37	\$1,006.79	\$109.17
Saratoga	\$42.42	\$25.90	\$377.69	\$622.45	\$62.75
Sunnyvale	\$33.22	\$38.80	\$353.14	\$525.84	\$62.72
Union City	\$53.65	\$38.58	\$327.01	\$727.79	\$71.09
Woodside	\$47.58	\$50.90	\$324.01	\$463.05	N/A
Total	\$1,434.14	\$1,324.61	\$12,944.16	\$24,281.34	\$2,597.67
Average	\$44.82	\$41.39	\$404.51	\$758.79	\$83.80

Allowed Percentage of Average

As per Section 6.4	88%	88%	88%	88%	88%
Plus Franchise Fee	<u>14%</u>	<u>14%</u>	<u>14%</u>	<u>14%</u>	<u>14%</u>
Total Allowed	102%	102%	102%	102%	102%
Adjusted Survey Average	45.72	42.22	412.59	773.94	85.48
Dollar Change	2.87	2.68	22.32	41.53	7.20
Current Rate	\$ 42.85	\$ 39.54	\$ 390.27	\$ 732.41	\$ 78.28
Proposed Percentage adjustment	6.70%	6.78%	5.72%	5.67%	9.20%

***CALCULATION NOTES:**

In cases where a 32gal residential cart was not available, the per gallon rate of the next closest size (usually a 35gal) was determined and multiplied by 32.

Debris box rates were calculated assuming 3 tons per load. In cases where a 14cy was not offered, the rate for the next closest size (usually a 15, 16 or 20cy) was used; the per yard rate was determined and multiplied by 14.

For jurisdictions not offering a compacted yard rate, a converted rate was calculated by dividing the 20cy compactor rate by 20.

The 20cy compactor rate assumes 7.5 tons.

Residential (2024 Survey)												
Jurisdiction	20gal or similar	Sz	Converted 20 Gal	32gal or similar	Sz	Converted 32	Rate Period Notes	Sources				
Alameda	\$39.37	20	\$ 39.37	\$49.70	32	\$ 49.70	Effective July 1, 2023	https://www.alameda-county-industries.com/alameda/residential/residential-services/	https://alameda-county-industries.com/wp-content/uploads/2023/07/ALA-Rates-23-24-UPDATED.pdf			
Burlingame	\$29.53	20	\$ 29.53	\$32.81	32	\$ 32.81	Effective Jan 1, 2024	https://www.burlingame.org/departments/finance/garbage_utility_recology.php				
Campbell	\$34.51	20	\$ 34.51	\$42.74	35	\$ 39.08	Effective July 1, 2023	http://www.westvalleyrecycles.com/serviceareas/Campbell-singlefamily-garbage-rates.html	https://www.wvswma.org/uploads/2/5/7/3/25736194/6a2_agenda_item_6_attach_1_rate_sheet.pdf			
Castro Valley	\$33.44	20	\$ 33.44	\$53.39	32	\$ 53.39	Effective July 1, 2023	https://www.cvsan.org/zero_waste/collection_and_curbside_services/rates/residential_services_single-family_rates.php				
Cupertino	\$39.67	24	\$ 33.06	\$42.19	32	\$ 42.19	Effective Feb 1, 2024	https://www.cupertino.org/home/showpublisheddocument/30289/638421326616170000				
Daly City	N/A	-	N/A	\$33.85	32	\$ 33.85	Effective July 1, 2021	https://www.republicservices.com/municipality/daly-city-ca	https://www.dalycity.org/DocumentCenter/View/1226/Single-Family-Cart-Service-PDF			
El Cerrito	\$49.89	20	\$ 49.89	\$65.31	35	\$ 59.71	Effective Jan 1, 2024	https://www.el-cerrito.org/389/Solid-Waste-and-Recycling-Rates	https://www.el-cerrito.org/DocumentCenter/View/19849/2024-Solid-Waste-Rates-and-Fees			
El Sobrante	\$35.02	20	\$ 35.02	\$43.34	35	\$ 39.63	Effective Jan 1, 2024	https://www.republicservices.com/cms/documents/municipality/ca/west-contra-costa-county/Uni-WCCC-Resi-Rates-2024.pdf				
Fremont	\$45.93	20	\$ 45.93	\$46.84	32	\$ 46.84	Effective Jan 1, 2024	https://www.republicservices.com/cms/documents/municipality/ca/Fremont-CA/Trash-Recycling-Rates-2024.pdf	https://www.republicservices.com/municipality/fremont-ca			

Residential (2024 Survey)												
Jurisdiction	20gal or similar	Sz	Converted 20 Gal	32gal or similar	Sz	Converted 32	Rate Period Notes	Sources				
Gilroy	N/A	-	N/A	\$43.00	32	\$ 43.00	unknown	Recology South Valley Customer Service 408 840 0753				
Hayward	\$29.17	20	\$ 29.17	\$42.63	32	\$ 42.63	Effective March 1, 2023	https://www.hayward-ca.gov/services/city-services/solid-waste-and-recycling-customer-support	https://www.hayward-ca.gov/sites/default/files/pdf/Hayward%20Rate%20Sheet%20Def%203.1.23%20Final%20Approved%20rev%202.8.23.pdf			
Hercules	\$38.82	20	\$ 38.82	\$46.17	35	\$ 42.21	Effective Jan 1, 2024	https://www.republicservices.com/cms/documents/municipality/ca/west-contra-costa-county/Hercules-Resi-Rates-2024.pdf				
Los Altos	\$44.98	20	\$ 44.98	\$48.45	32	\$ 48.45	Effective July 1, 2023	https://missiontrail.com/tosaltos/basic-service-menu-for-residents-of-single-family-homes/				
Los Gatos	\$36.73	20	\$ 36.73	\$45.74	35	\$ 41.82	Effective July 1, 2023	http://www.westvalleyrecycles.com/serviceareas/Los%20Gatos-singlefamily-garbage-rates.html	https://www.wvswma.org/uploads/2/5/7/3/25736194/6a2-agenda-item-6-attach-1-rate-sheet.pdf			
Martinez	\$28.17	20	\$ 28.17	\$40.36	32	\$ 40.36	Effective January 1, 2023	https://www.cityofmartinez.org/government/sustainability-resources/garbage-and-recycling-services	https://www.cityofmartinez.org/home/showpublisheddocument/3227638110186264130000			
Menlo Park	\$44.81	20	\$ 44.81	\$53.14	32	\$ 53.14	Effective Jan 1, 2024	https://menlopark.gov/Government/Departments/Public-Works/Utilities/Garbage-recycling-and-composting-services	https://menlopark.gov/files/content/public/v/13/government/departments/public-works/utilities/garbage-recycling-and-composting-services/2020-2025-solid-waste-rate-schedule-for-single-family-multifamily-and-commercial.pdf			
Monte Sereno	\$42.48	20	\$ 42.48	\$52.83	35	\$ 48.30	Effective July 1, 2023	http://www.westvalleyrecycles.com/serviceareas/Monte-Sereno-singlefamily-garbage-rates.html	https://www.wvswma.org/uploads/2/5/7/3/25736194/6a2-agenda-item-6-attach-1-rate-sheet.pdf			

Residential (2024 Survey)												
Jurisdiction	20gal or similar	Sz	Converted 20 Gal	32gal or similar	Sz	Converted 32	Rate Period Notes	Sources				
Morgan Hill	N/A	-	N/A	\$42.01	48	\$ 28.01	unknown	Recology South Valley Customer Service 408.840.0753				
Palo Alto	\$27.81	20	\$ 27.81	\$50.07	32	\$ 50.07	Effective July 1, 2017	https://www.cityofpaloalto.org/gov/depts/pwd/zerowaste/projects/refuse.asp#Top%20of%20page	https://www.cityofpaloalto.org/Departments/Public-Works/Zero-Waste/About-Us/Refuse-Rates			
Piedmont	\$94.76	20	\$ 94.76	\$100.41	35	\$ 91.80	Effective July 1, 2023	https://piedmont.ca.gov/services_departments/public_works/recycling_organic_waste_garbage/garbage				
Pinole	\$35.35	20	\$ 35.35	\$42.84	35	\$ 39.17	Effective Jan 1, 2024	https://www.republicservices.com/cms/documents/municipality/ca/west-contra-costa-county/Pinole-Resi-Rates-2024.pdf				
Pittsburg	N/A	-	N/A	\$54.54	32	\$ 54.54	Effective Jan 1, 2024	https://m.drr.com/pittsburg/				
Richmond	\$38.90	20	\$ 38.90	\$47.66	35	\$ 43.57	Effective Jan 1, 2024	https://www.republicservices.com/cms/documents/municipality/ca/west-contra-costa-county/Richmond-Resi-Rates-2024.pdf				
San Bruno	\$29.30	20	\$ 29.30	\$37.79	32	\$ 37.79	Effective July 1, 2023	https://www.sanbruno.ca.gov/DocumentCenter/View/4221/2023-2024-Garbage-Solid-Waste-Rate-Increase-Prop-218-Notice	https://www.recology.com/recology-san-bruno/your-three-carts/			
San Leandro	\$31.45	20	\$ 31.45	\$39.18	32	\$ 39.18	Effective July 1, 2023	https://www.alamedacountyindustries.com/sanleandro/residential/singlefamily/	https://alamedacountyindustries.com/wp-content/uploads/2023/06/SL-Web-Rates-2023-2024-Flattened.pdf			
San Mateo	\$28.59	20	\$ 28.59	\$37.93	32	\$ 37.93	Effective April 1, 2024	https://www.cityofsanmateo.org/2167/Solid-Waste-Rates	https://www.cityofsanmateo.org/DocumentCenter/View/89190/2023-Residential-Cart-Rates?bidid=	https://www.cityofsanmateo.org/2167/Solid-Waste-Rates		

Residential (2024 Survey)												
Jurisdiction	20gal or similar	Sz	Converted 20 Gal	32gal or similar	Sz	Converted 32	Rate Period Notes	Sources				
San Pablo	\$30.86	20	\$ 30.86	\$38.34	35	\$ 35.05	Effective Jan 1, 2024	https://www.republicservices.com/cms/documents/municipality/ca/west-contra-costa-county/San-Pablo-Resi-Rates-2024.pdf				
Saratoga	\$37.38	20	\$ 37.38	\$46.40	35	\$ 42.42	Effective July 1, 2023	http://www.westvalleyrecycles.com/serviceareas/Saratoga-singlefamily-garbage-rates.html	https://www.wvswma.org/uploads/2/5/7/3/25736194/6a2_agenda_item_6_attach_1_rate_sheet.pdf			
Sunnyvale	\$38.46	27	\$ 28.49	\$44.64	43	\$ 33.22	Effective July 1, 2023	https://www.sunnyvale.ca.gov/home/showpublisheddocument/376/638252060903500000	https://www.sunnyvale.ca.gov/homes-streets-and-property/utility-billing/utility-rates			
Union City	\$50.27	20	\$ 50.27	\$58.68	35	\$ 53.65	Effective July 1, 2023	https://www.republicservices.com/cms/documents/municipality/ca/Union-City/Union-City-Residential-Rates-2023.pdf	https://www.republicservices.com/municipality/union-city-ca	https://www.unioncity.org/160/Residential-Waste-Collection-Rates	https://www.unioncity.org/DocumentCenter/View/10044/FY-2023-24-Complete-Waste-Collection-Rates?bidid=	
Woodside	\$29.71	20	\$ 29.71	\$47.58	32	\$ 47.58	Effective July 1, 2023	https://www.greenwaste.com/woodside/	https://www.greenwaste.com/wp-content/uploads/2023-rates-WST-RES-PDF.pdf			

Commercial (2024 Survey)														
Jurisdiction	32gal or similar	Sz	32gal Converted	2cy	14cy or similar (with 3 tons)	Sz	14cy converted	compacted yard	20cy compactor	compacted yard converted	Misc. Notes	Sources		
Alameda	\$44.28	32	\$44.28	\$378.60	\$1,141.05	15	\$1,064.98		\$1,692.60	\$84.63	96g of recycling & 96gal of organics included in garbage rate. Additional for a charge.	https://alamedacountyindustries.com/wp-content/uploads/2023/07/ALA-Rates-23-24-UPDATED.pdf		
Burlingame	\$32.81	32	\$32.81	\$414.14	\$1,034.81	16	\$905.46		\$1,795.06	\$89.75	Garbage rate includes recycling.	https://www.burlingame.org/departments/finance/garbage_utility_recology.php	https://cms8.revize.com/revize/burlingamecity/departments/Finance/Attach%20%20-%20Additional%20Services%20Burlingame%202024.pdf	Mia Rossi, Recology San Mateo, mrossi@recology.com
Campbell	\$19.76	35	\$18.07	\$263.49	\$852.92	20	\$597.04		\$1,196.60	\$59.83	Garbage rate includes service of same level of recycling.	http://www.westvalleyrecycles.com/services/areas/Campbell-commercial-garbage-rates.html	http://westvalleyrecycles.com/services/areas/commercial-other-services.html	West Valley Customer Service 408.283.9250
Castro Valley	\$54.34	32	\$54.34	\$702.97	\$766.81	14	\$766.81		\$1,046.45	\$52.32	Garbage cart and bin rates include recycling.	https://www.cvsan.org/zero-waste/collection-and-curbside-services/rates/commercial-service-rates.php#	https://alamedacountyindustries.com/wp-content/uploads/2023-06/CVSan-Rates-2023-2024.pdf	https://www.alamedacountyindustries.com/cvsan/commercial/rates/
Cupertino	\$31.50	32	\$31.50	\$237.84	\$667.85	16	\$584.37	\$56.30	\$1,126.00	\$56.30	Garbage rate does not include recycling/organics.	https://www.cupertino.org/our-city/departments/environment-sustainability/garbage-and-recycling/rates-and-collection-schedule		
Daly City	\$32.81	32	\$32.81	\$514.77	\$885.26	15	\$826.24		\$1,008.39	\$50.42	Garbage rate includes recycling.	https://www.dalycity.org/DocumentCenter/View/1222/Commercial-and-Multi-Family-Bin-Service-PDF?bid=	https://www.dalycity.org/DocumentCenter/View/1223/Commercial-Bin-Service-PDF?bid=	https://www.dalycity.org/DocumentCenter/View/1224/Debris-Box-and-Compactor-Service-PDF?bid=
El Cerrito	\$68.17	35	\$62.33	\$890.00	\$900.00	20	\$630.00		\$3,173.60	\$158.68	Garbage rate includes recycling and a base level of organics service.	https://ebstan.com/debris-boxes/	https://www.elcerrito.org/DocumentCenter/View/19849/2024-Solid-Waste-Rates-and-Fees	carafigueroa@ebstan.com
El Sobrante	\$54.05	35	\$49.42	\$463.79	\$1,163.39	14	\$1,163.39	\$123.38	\$2,467.60	\$123.38	Garbage rate includes service of same level of recycling.	https://www.republicservices.com/cms/documents/municipality/west-contra-costa-county/Un-WCCC-Comm-Rates-2024.pdf	https://www.republicservices.com/municipality/wccc-ca	Republic Services Customer Service 925.685.4711, and Tara @ 510.262.7100
Fremont	\$24.84	32	\$24.84	\$204.89	\$576.16	14	\$576.16		\$1,665.70	\$83.29	Garbage rate does not include recycling/organics.	https://www.republicservices.com/cms/documents/municipality/calfremont-CA/Trash-Recycling-Rates-2024.pdf#page=2	Republic Customer Service, 510.657.3500, Maria Mendoza @ MMendoza3@republicservices.com	
Gilroy	\$43.00	32	\$43.00	\$285.57	\$693.99	20	\$485.79		\$1,310.00	\$65.50		https://www.republicservices.com/municipality/wccc-ca	Recology South Valley Customer Service 408.840.0753	
Hayward	\$34.50	32	\$34.50	\$327.55	\$538.78	14	\$538.78		\$1,295.92	\$64.80	Garbage rate does not include recycling/organics.	https://www.hayward.ca.gov/sites/default/files/pdf/it/hayward%20Rate%20Sheet%20ef%203.1.23%20final%20Approved%20rev%202.8.23.pdf		
Hercules	\$53.35	35	\$48.78	\$541.58	\$1,163.39	14	\$1,163.39	\$123.38	\$2,467.60	\$123.38	Garbage rate includes recycling and a base level of organics service.	https://www.republicservices.com/cms/documents/municipality/west-contra-costa-county/Hercules-Comm-Rates-2024.pdf	https://www.republicservices.com/municipality/wccc-ca	Republic Services Customer Service 925.685.4711
Los Altos	\$48.44	32	\$48.44	\$380.17	\$1,089.16	15	\$1,016.55		\$1,469.48	\$73.47	Garbage rate includes appropriate level of recycling and organics service.	https://missiontrail.com/losaltos/los-altos-service-rate-for-cart-bin-dumpster/	https://missiontrail.com/losaltos/los-altos-rates-for-debris-box-and-compactor-services/	
Los Gatos	\$24.44	35	\$22.35	\$325.94	\$951.56	20	\$666.09		\$1,332.01	\$66.60	Garbage rate includes service of same level of recycling.	http://www.westvalleyrecycles.com/services/areas/Los-Gatos-commercial-garbage-rates.html	West Valley Customer Service 408.283.9250	
Martinez	\$43.08	32	\$43.08	\$370.31	\$679.06	20	\$475.34		\$1,520.91	\$76.05	Garbage rate includes appropriate level of recycling and organics service.	https://www.cityofmartinez.org/government/sustainability-resources/garbage-and-recycling-services		

South San Francisco Scavenger Company Rates and Adjustments Thereto

6.1 Establishment of Rates. The maximum service rates specified in Exhibit B to this Agreement have been agreed upon by City and Scavenger Company and shall take effect on the effective date of the franchise as set forth in Section 3 above. Such maximum service rates shall be subject to review and revision as set forth in Section 4.1 above, Sections 6.2, 6.3 and 6.4 below and other relevant provisions of this Agreement. Scavenger Company shall not charge any amount in excess of the approved rates for services required by or permitted under this Agreement.

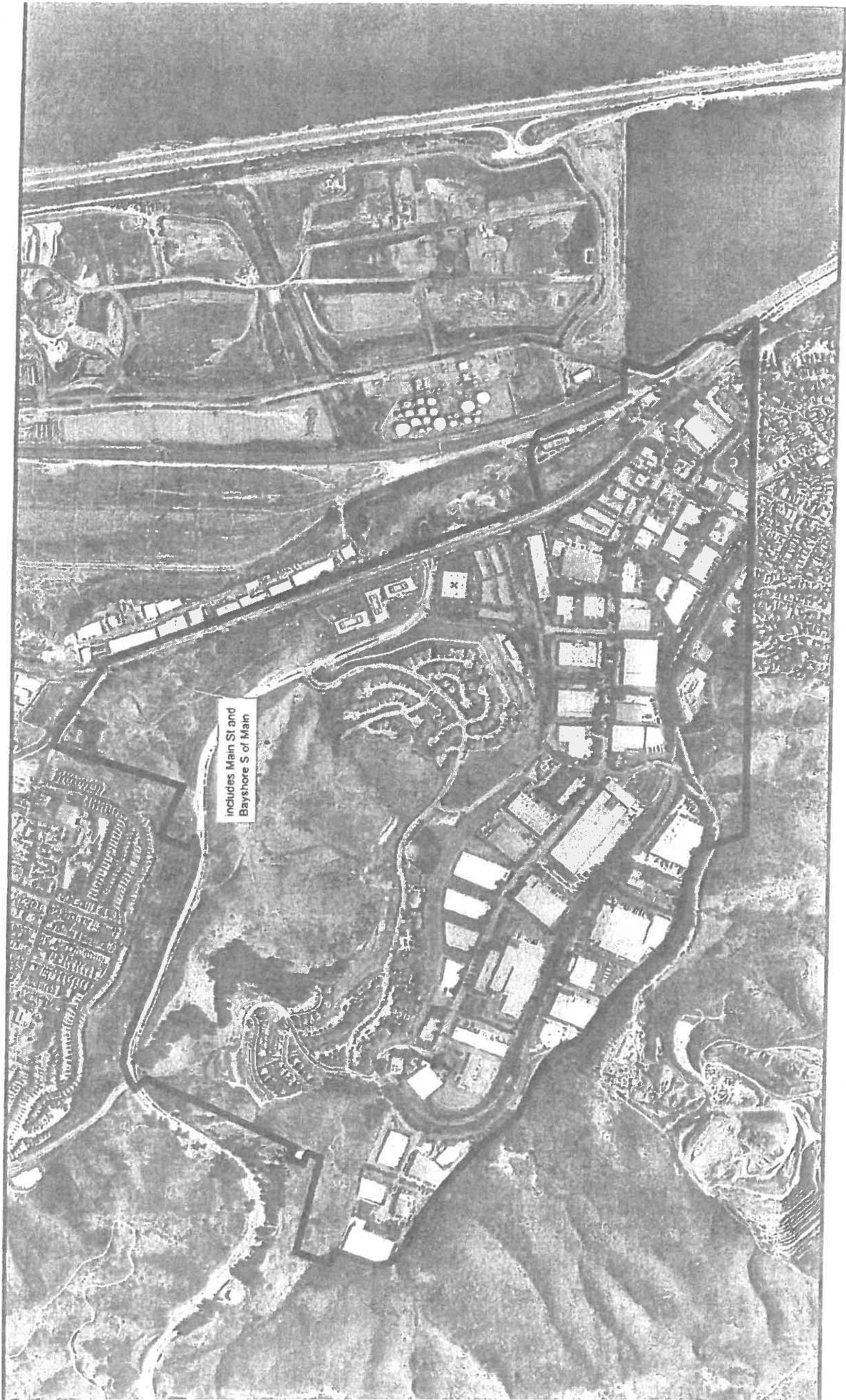
6.2 Modification Based on Consumer Price Index. The maximum rates specified under this Agreement shall be adjusted July 1st every year (beginning in 2016, but excluding the year 2015 and every third year thereafter) by an amount equal to eighty percent (80%) of the percentage change, if any, in the Consumer Price Index for Urban Wage Earners and Clerical Workers, as published and maintained by the United States Bureau of Labor Statistics for the San Francisco-Oakland Metropolitan Area (1982-84=100), for the prior year, using the Index most recently published before March 31st of such year and before the prior March 31st. For example, if the Index should decrease by two percent (2%) as of March 31, 2016 as compared with March 31, 2015, each of the maximum rates set forth on Exhibit B, as previously adjusted, would be decreased as of July 1, 2016 by one and six-tenths percent (1.6%) [negative .02 multiplied by .8]. Likewise, if the Index should increase by three percent (3%) as of March 31, 2019 as compared with March 31, 2018, each of the maximum rates set forth on Exhibit B, as previously adjusted, would be increased as of July 1, 2019 by two and four-tenths percent (2.4%) [.03 multiplied by .8]. The procedure for rate adjustments under this Section 6.2 shall be as follows.

- (a) Not later than March 31st of each year that is subject to a rate adjustment under this Section 6.2, Scavenger Company shall file with City a written Notice of Intention to increase each of the then current rates effective as of July 1st of the same year in accordance with the above-specified formula, if Scavenger Company believes such an increase to be called for, or City shall provide to Scavenger Company a written Notice of Intention to decrease each of the then current rates effective as of July 1st of the same year in accordance with the above-specified formula, if City believes such a decrease to be called for.
- (b) Within thirty (30) days of the filing of the Notice of Intention, the City Manager shall review the Notice of Intention with Scavenger Company, and either confirm that the proposed rates are within the limit of Section 6.2(a) above or establish by mutual agreement with Scavenger Company any necessary changes to the proposed maximum rates to make such confirmation.
- (c) The City Manager shall immediately inform the City Council in writing of the new maximum rates determined in accordance with this Section 6.2 and, not later than June 30th of the year of the Notice of Intention, the City Council shall act upon the new maximum rates as appropriate, with any new maximum rates to become effective on July 1st of the same year.

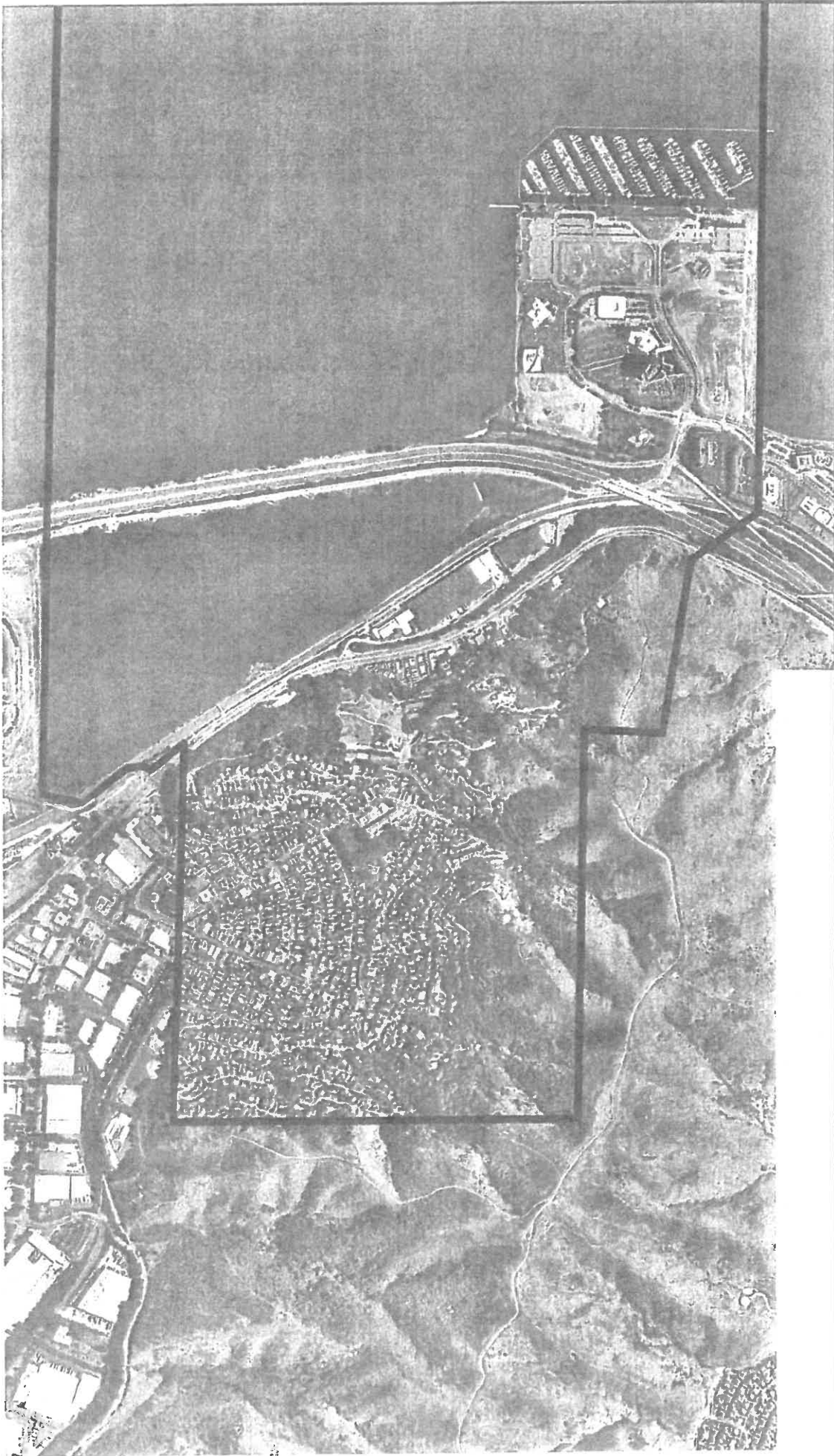
6.4 Modification Based on Neighboring Cities' Rates. Irrespective of any adjustments to maximum rates pursuant to Sections 6.2 and/or 6.3 above, every maximum service rate applicable under this Agreement shall be adjusted effective as of July 1 in each of the years 2015 and every third year thereafter (i) in the case of each of the service categories set forth in Exhibit C attached to this Agreement, so as to equal eighty-eight percent (88%) plus the percentage of the Franchise Fee times the average of the most current rates for such service category charged in the jurisdictions set forth in Exhibit D, and (ii) in the case of every other service category not set forth on Exhibit C, so as to equal an amount reasonably arrived at by extrapolating from the new rates determined in accordance with Section 6.4(i) above. The most current rate charged in each jurisdiction listed in Exhibit D for a service category listed in Exhibit C shall mean the rate that applies as of the date Scavenger Company files the Notice of Intention described in Section 6.4(a) below, and shall be based on the actual published rate for a period including such date. The average of the most current rates for a particular service category listed on Exhibit C shall be determined by adding all the most current rates for such service category, and dividing by the number of jurisdictions set forth in Exhibit D. The procedure for rate adjustments under this Section 6.4 shall be as follows.

- (a) Not later than March 31st of each year that is subject to a rate adjustment under this Section 6.4, Scavenger Company shall file with City a written Notice of Intention to adjust, effective as of July 1st of the same year, each of the then current maximum service rates in accordance with Section 6.4 above.

An example of such calculation for an Exhibit C service category and for a related service category not listed in Exhibit C is as follows: if the total of the most current rates in the applicable jurisdictions, which number thirty-two (32), for weekly 2-yard commercial front end loader service per month as of March 31, 2018 were \$4,800, Scavenger Company's Notice of Intention for July 1, 2018 would specify \$150.00 [$\$4,800$ divided by 32 multiplied by .88 plus the percentage of the Franchise Fee] as the new maximum rate for such service category, and could specify \$300.00 for weekly 4-yard commercial front end loader service per month.

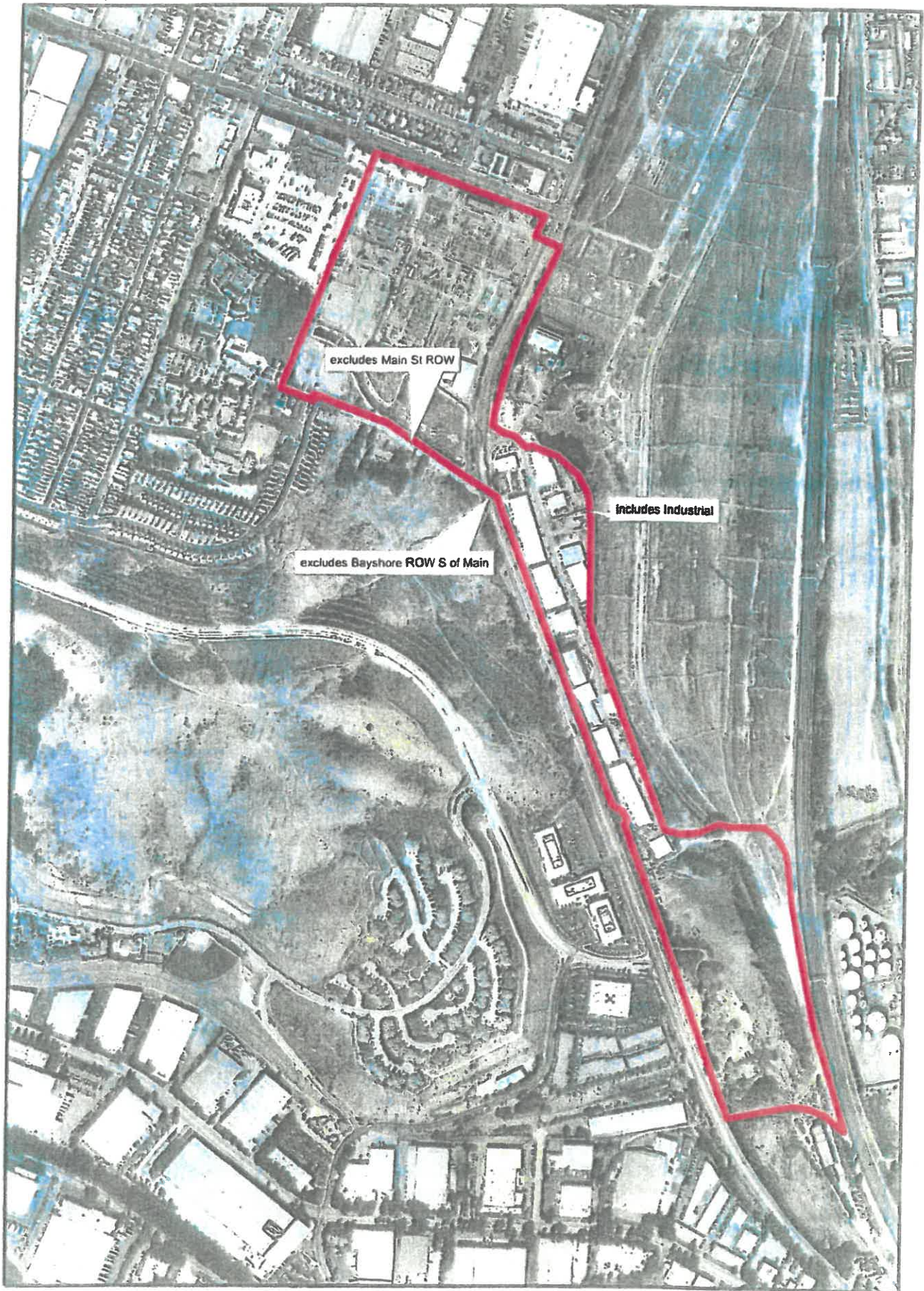


**City of Brisbane
Solid Waste Collection Zone
1 - A**



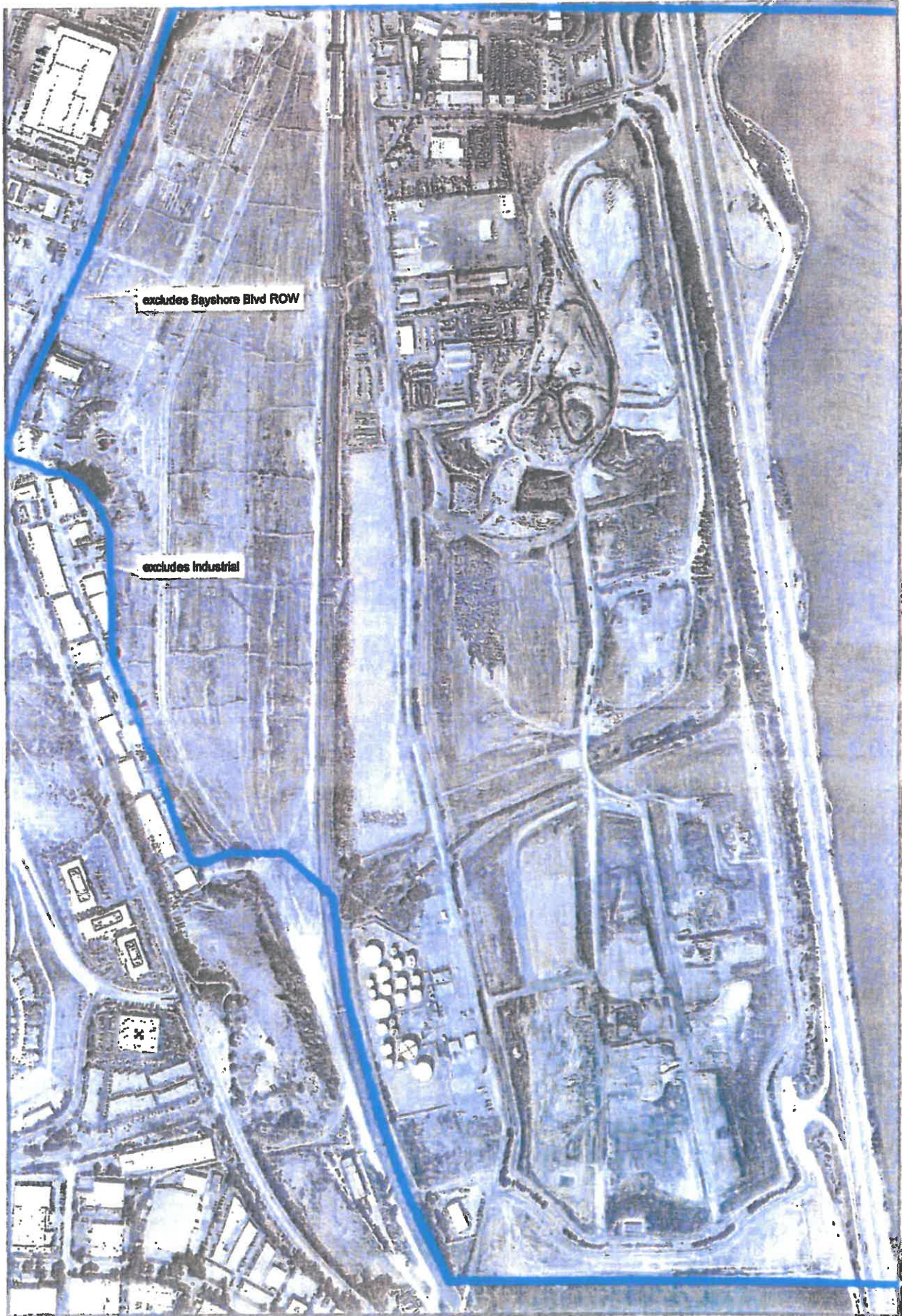
**City of Brisbane
Solid Waste Collection Zone
1 - B**





**City of Brisbane
Solid Waste Collection Zone**

2



**City of Brisbane
Solid Waste Collection Zone**