



CITY COUNCIL AGENDA REPORT

Meeting Date: June 3, 2021

From: Director of Public Works/City Engineer

Subject: Solid Waste Collection Rate Adjustment

Community Goal/Result

Ecological Sustainability

Purpose

To review pending rate adjustments submitted by the city's two solid waste franchisees.

Recommendation

1. Acknowledge South San Francisco Scavenger's 2021 rate increases as reflected in their March 31, 2021 letter.
2. Acknowledge Recology Brisbane's 2021 decision to forego a request for a rate increase.

Background

The city has two Franchise Agreements dated November 20, 2014 for the provision of waste collection services, one with South San Francisco Scavenger Company in Solid Waste Collection Zones 1(A&B) and 2, and one with Recology Brisbane in Solid Waste Collection Zone 3. Both agreements have language specifying under what conditions a rate increase may occur.

The applicable section from Scavenger's Agreement applicable to their 2021 rate increase is Section 6.4, which has been redacted from the full agreement and incorporated behind their 3/31/21 correspondence.

Discussion

Recology Brisbane initially submitted, and then rescinded a rate increase request for 2021. South San Francisco Scavenger declined to request a rate increase in 2020, but did submit a request for rate increases this year, and they have received confirmation from the City Manager that their proposed rates were in accordance with their franchise agreement. Pursuant to each agreement, "... not later than June 30th of the year of the Notice of Intention, the City Council shall act upon the new maximum rates as appropriate, with any new maximum rates to become effective on July 1st of the same year."

With Scavenger completing their calculations per the agreement, there is no discretionary action for the Council to take.

Fiscal Impact

The proposed new rates are found in pages 3-5 of Scavenger's 3/31/21 correspondence.

Measure of Success

Compliance with the previously agreed upon terms and conditions for rate adjustments.

Attachments

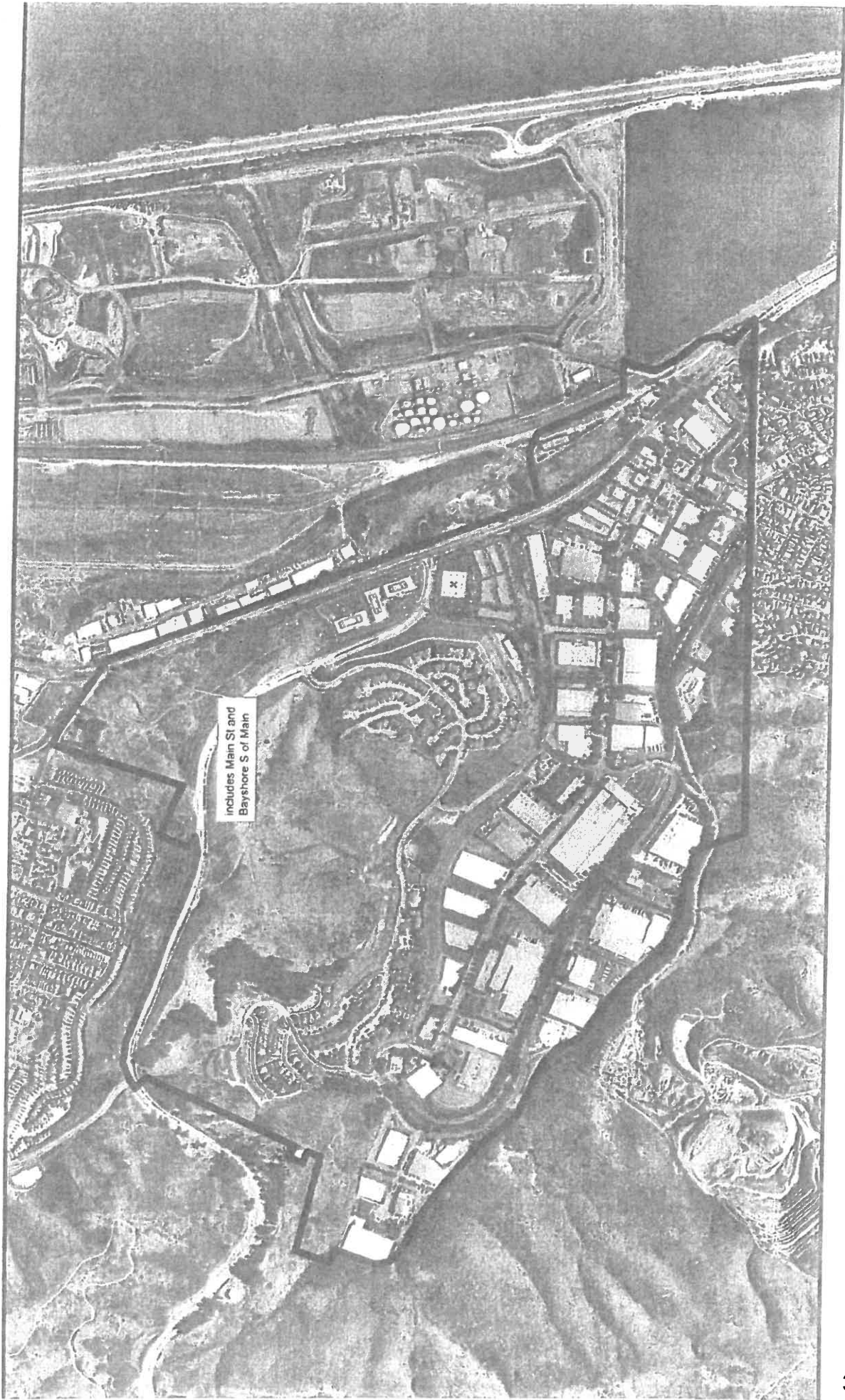
1. Solid Waste Collection Zone Maps
2. South San Francisco Scavenger letter of 3/31/21, and redacted rate adjustment language

RL Breault

Randy Breault, Public Works Director



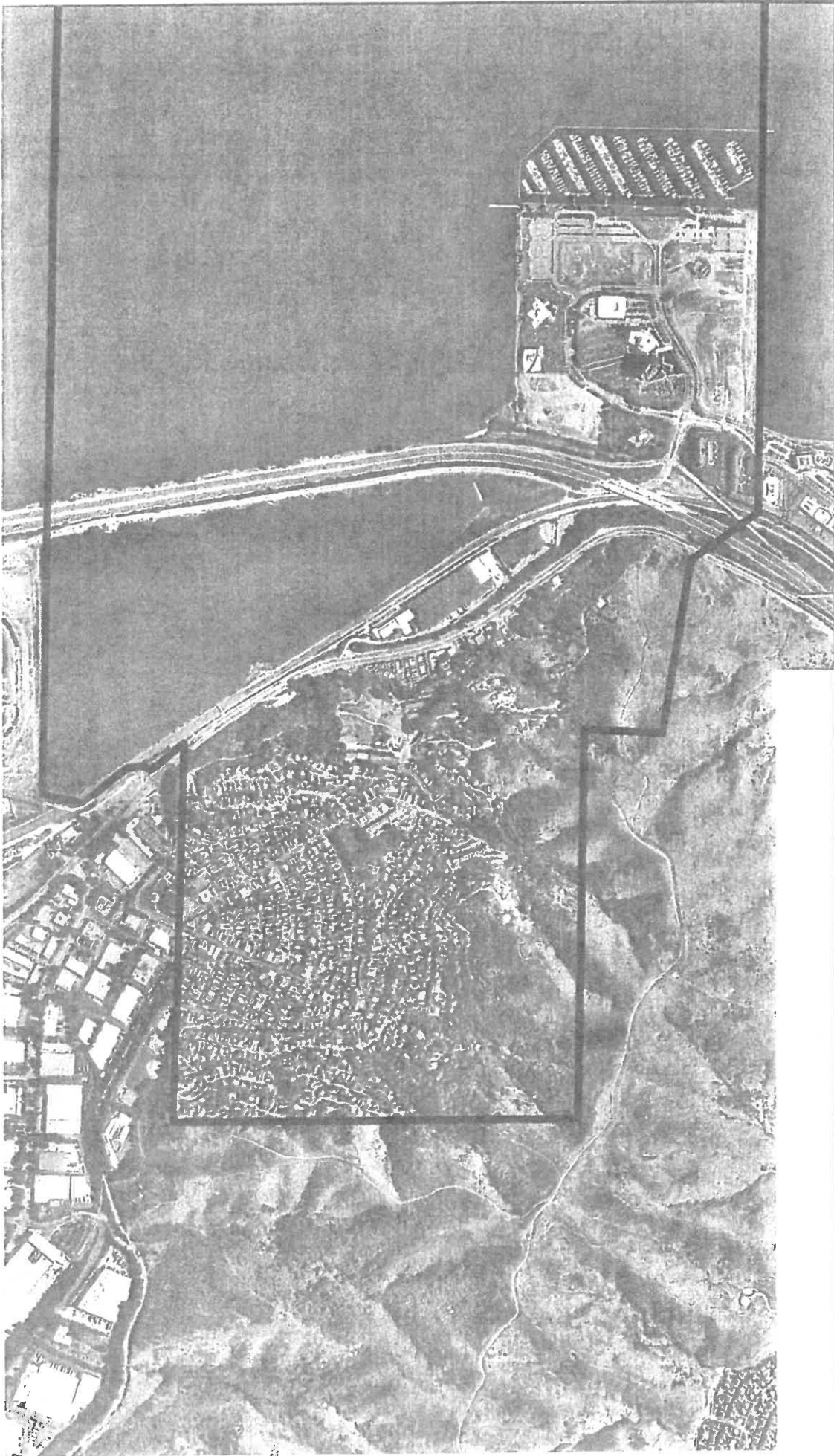
Clay Holstine, City Manager



Includes Main St and Bayshore S of Main

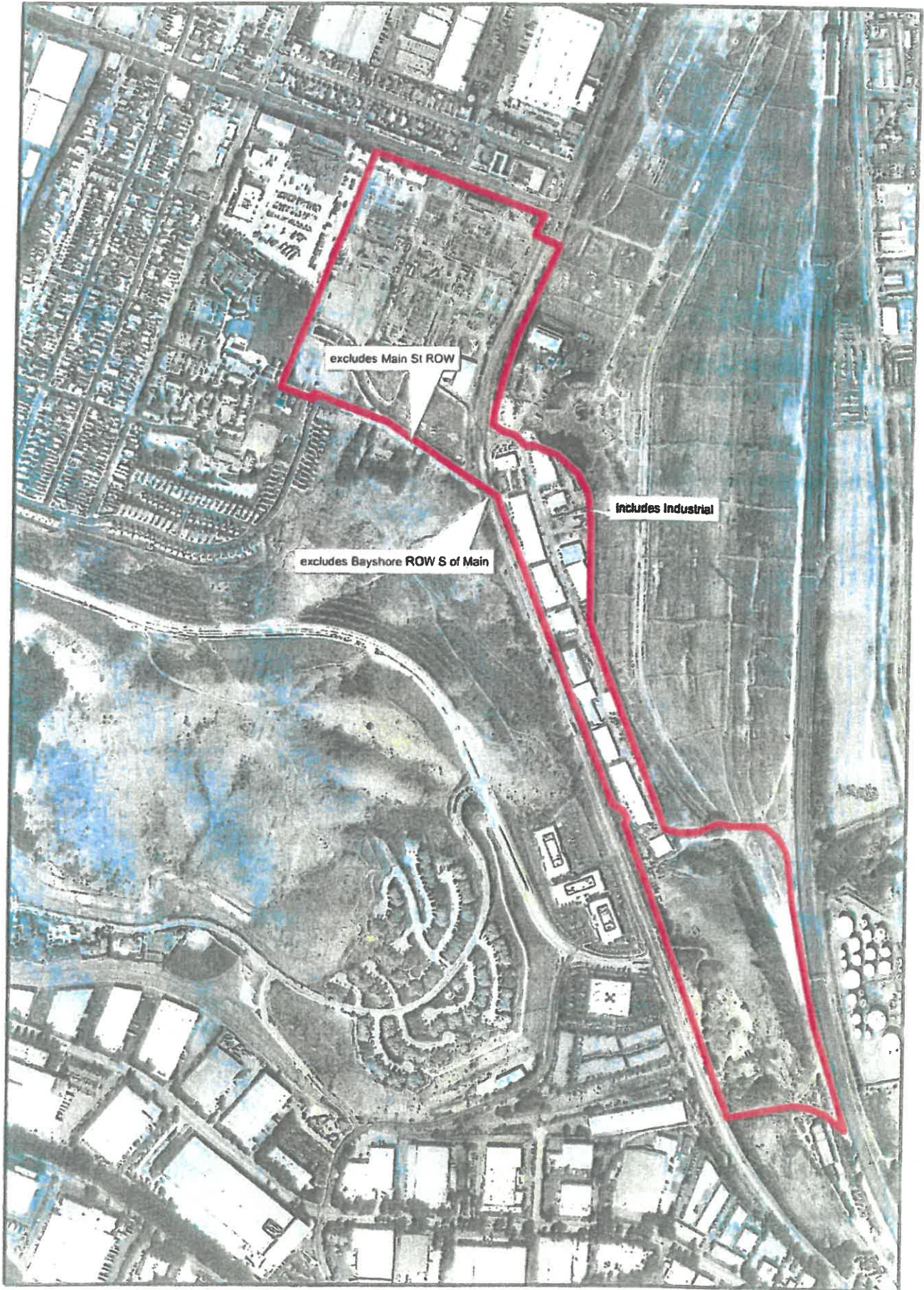


**City of Brisbane
Solid Waste Collection Zone
1 - A**

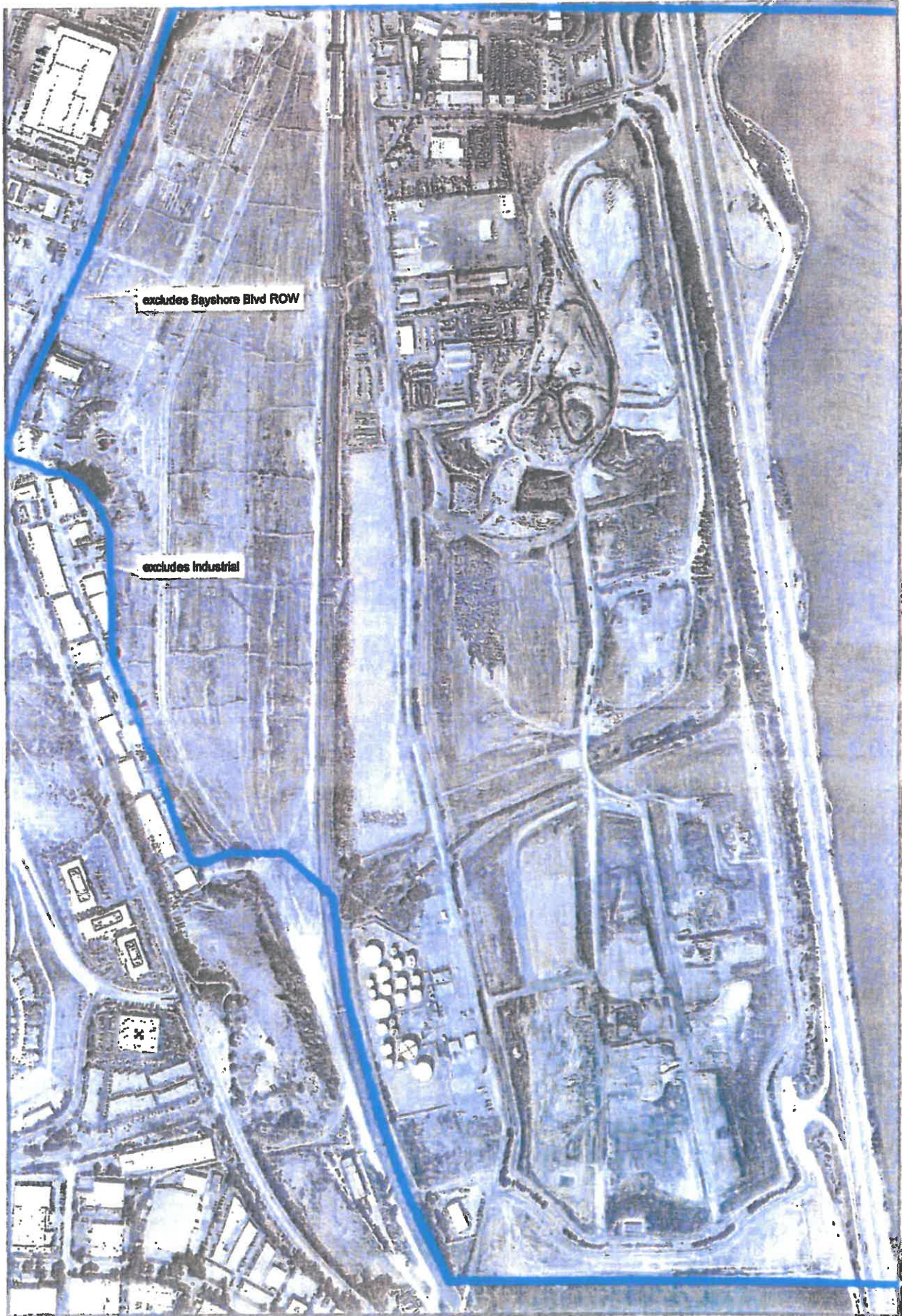


**City of Brisbane
Solid Waste Collection Zone
1 - B**





**City of Brisbane
Solid Waste Collection Zone**



0 250 500 1,000 Feet



City of Brisbane
Solid Waste Collection Zone

SOUTH SAN FRANCISCO
SCAVENGER
— COMPANY, INC. —

March 31, 2021

Director Randy Breault, P.E.
Public Works-Marina Services-Emergency Services
City of Brisbane
50 Park Lane
Brisbane, CA 94005

Dear Director Breault,

In accordance with the terms of Section 6.4 of the Franchise Agreement, Modification Based on Neighboring Cities' Rates, please accept this letter and the enclosed data from our survey of solid waste rates, and the proposed rate chart as our application for rate modification.

The enclosed survey data was gathered by Teresa Montgomery, Sustainability Manager, using the same methodologies as in previous surveys. Ms. Montgomery will assist during your review and provide further information as needed. As you will see from the attached reports, the five benchmark rates lead to adjustments ranging from 15.36% to 3.69%, depending on the type of service.

A proposed rate schedule is attached. As per the Franchise Agreement, the rate adjustments would be effective as of July 1, 2021, if approved.

As you know, the franchise agreement has a three-year cycle, and rates are intended to be adjusted every third year based on this survey method, and in the other two years, based on changes in the Consumer Price Index. Please keep in mind, that in 2020, the CPI adjustment was skipped due to economic fallout from the pandemic. In comparison, you can see that rates in neighboring cities have significantly increased since the last survey in 2018.

There are many factors putting upward pressure on rates in neighboring cities. Beginning in 2018, China began enforcing their China Sword Policy, which effectively shut down the worldwide markets for recyclable materials, especially cardboard and plastics. The values of these materials plummeted, and in fact, affected most of the materials traditionally recycled through typical recycling programs.

At the same time, California recycling laws have continued to require more and more diversion from landfill. AB 341 implemented mandatory recycling for commercial

businesses, public entities and multi-family properties, and over time, has magnified the effect of the China Sword Policy. AB 1826, mandates organics recycling, and since 2018, more and more generators have fallen under the requirements, as the threshold for compliance tightened. Currently, SB 1383 has moved to the forefront, with a mandate for a 75% reduction in organic waste. In order to meet these requirements, new services will need to be added, and existing ones modified. These costs are already beginning to be reflected in the rates for service.

And, of course, the economic effects of the pandemic are putting pressure on rates as well. Commercial rates have traditionally helped to support lower rates for residential services, but with the disappearance of many commercial sources, due to travel restrictions, work from home orders, and restaurant closures, these rates are not there as much to support those residential rates. There have also been efforts to align those rates more closely with the actual cost of providing that service.

Thank you for your consideration of this matter, and we are, of course, available to meet and confer at your convenience, as you desire.

Sincerely,

A handwritten signature in black ink, appearing to read "Paul Formosa", written over a light blue horizontal line.

Paul Formosa, CFO
South San Francisco Scavenger Company, Inc.

**SOUTH SAN FRANCISCO SCAVENGER, INC.
RATES AND CHARGES EFFECTIVE JULY 1, 2021
CITY OF BRISBANE, CALIFORNIA**

		<u>Current</u> <u>Rates</u>	<i>Proposed change</i>	<u>Proposed</u> <u>Maximum Rates</u>
1. RESIDENTIAL PROPERTY SERVICE -				
Single family, and up to four units. As per section 2.13				
Rate is per month, one pickup per week				
Includes 64 gallon weekly curbside recycling toter service				
Includes weekly mixed organic materials / yardwaste toter service				
20	Gallon Trash Toter	21.25	15.36%	24.51
32	Gallon Trash Toter	33.99	15.36%	39.21
64	Gallon Trash Toter	67.98	15.36%	78.42
2. COMMERCIAL AND MULTIPLE UNIT RESIDENTIAL PROPERTY CAN SERVICE-				
Multiple Unit Residential Property, 5 or more units, as per section 2.14				
Rate is per month, one pickup per week, for Solid Waste and / or Source Separated Organic Materials				
Includes Source Separated Recyclable Materials				
0 - 30	Gallons	30.02	12.85%	33.88
31 - 32	Gallons	32.06	12.85%	36.18
33 - 40	Gallons	40.01	12.85%	45.15
41 - 45	Gallons	45.09	12.85%	50.88
46 - 50	Gallons	55.04	12.85%	62.11
51 - 64	Gallons	64.05	12.85%	72.28
3. COMPACTED YARDAGE				
Residential, Multi Unit Residential, Commercial, Industrial Customers				
Per Cubic Yard, per pickup				
		69.07	3.69%	71.62
4. DEBRIS BOXES				
Temporary / One Time Use				
Residential, Multi Unit Residential, Commercial, Industrial Customers				
Rate is for each pickup				
5 yard	Container, 1 ton limit	283.39	8.31%	306.94
7 yard	Container, Dirt - Rock - Concre	618.73	8.31%	670.14
14 yard	Container, 3 ton limit	618.73	8.31%	670.14
20 yard	Container, 5 ton Limit	842.26	8.31%	912.24
30 yard	Container, 6 ton limit	1,214.87	8.31%	1,315.81
Rental Charge (per day, over 3 days for 5 yard and over 7 days for others)				
		27.91	8.31%	30.23

**SOUTH SAN FRANCISCO SCAVENGER, INC.
RATES AND CHARGES EFFECTIVE JULY 1, 2021
CITY OF BRISBANE, CALIFORNIA**

	<u>Current Rates</u>	<i>Proposed change</i>	<u>Proposed Maximum Rates</u>
4. DEBRIS BOXES (coninued)			
Permanent Commercial and Industrial use			
7 yard Container, Dirt - Rock - Concre	521.65	8.31%	564.99
14 yard Container, 3 ton limit	521.65	8.31%	564.99
20 yard Container, 5 ton Limit	745.27	8.31%	807.19
30 yard Container, 6 ton limit	1,117.91	8.31%	1,210.80
Overweight Charge			
Per ton over limit	161.37	8.31%	174.78
5. CONTAINER SERVICE			
Residential, Multi Unit Residential, Commercial, Industrial Customers			
Rate is per month, one pickup per week, for Solid Waste			
and / or Source Separated Organic Materials			
Includes Source Separated Recyclable Materials			
A) Regular Pickup (Rate per month, one pickup per week)			
1/2 - yard (96 gal) Container	131.34	10.24%	144.79
1 - yard Container	262.65	10.24%	289.55
2 - yard Container	323.92	10.24%	357.09
3 - yard Container	485.85	10.24%	535.60
4 - yard Container	647.70	10.24%	714.02
5 - yard Container	809.64	10.24%	892.55
6 - yard Container	971.57	10.24%	1,071.06
B) On Call Pick-up Per yard			
Per pick-up, per yard	37.42	10.24%	41.25
Plus Container Rental per Month			
Rental charges (per month)			
1 - yard Container	58.45	10.24%	64.44
2 - yard Container	63.20	10.24%	69.67
3 - yard Container	67.95	10.24%	74.91
4 - yard Container	73.01	10.24%	80.49
5 - yard Container	82.66	10.24%	91.12
6 - yard Container	87.73	10.24%	96.71

**SOUTH SAN FRANCISCO SCAVENGER, INC.
RATES AND CHARGES EFFECTIVE JULY 1, 2021
CITY OF BRISBANE, CALIFORNIA**

<u>Current</u> <u>Rates</u>	<i>Proposed change</i>	<u>Proposed</u> <u>Maximum Rates</u>
--------------------------------	------------------------	---

6. In the case of any additional service not described in the Agreement, Scavenger Company shall charge such amount as is agreed to by the customer.

7. Trash Container Management Policy Fees

Maximum fees allowed pursuant to approved Policy, as per Section 5.1.

Maximum fee consists of Admin Fee plus Extra Trip Fee for containers 1 yard and up.

Residential, Multi Unit Residential, Commercial, Industrial Customers

<u>Container Size</u>	<u>Admin fee</u>			<u>Admin Fee</u>
30 gallon	30.00	-	\$	30.00
32 gallon	30.00	-	\$	30.00
40 gallon	30.00	-	\$	30.00
45 gallon	30.00	-	\$	30.00
55 gallon	30.00	-	\$	30.00
64 gallon	30.00	-	\$	30.00
96 gallon	30.00	-	\$	30.00
1 yard	30.00	-	\$	30.00
1.5 yard	30.00	-	\$	30.00
2 yard	30.00	-	\$	30.00
3 yard	30.00	-	\$	30.00
4 yard	30.00	-	\$	30.00
5 yard	30.00	-	\$	30.00
6 yard	30.00	-	\$	30.00

<u>Container Size</u>	<u>Extra Trip Fee</u>			<u>Extra Trip Fee</u>
1 yard	60.61	10.24%	\$	66.82
1.5 yard	90.92	10.24%	\$	100.23
2 yard	74.75	10.24%	\$	82.41
3 yard	112.12	10.24%	\$	123.60
4 yard	149.47	10.24%	\$	164.77
5 yard	186.84	10.24%	\$	205.97
6 yard	224.21	10.24%	\$	247.17

Extra Trip Fee calculated as approved monthly 5.A) Container Service rates (one pickup per week) times 12 months per year divided by 52 weeks per year.

2021 Survey Results - Brisbane

City	Residential 32-gal Converted	Commercial 32-gal Converted	2-yard Bin	14-yard Box Converted	Compacted Yard Converted
Alameda	\$44.07	\$39.26	\$335.71	\$944.30	\$75.04
Burlingame	\$28.41	\$28.41	\$358.56	\$546.88	\$77.71
Campbell	\$30.47	\$14.41	\$210.07	\$502.06	\$50.00
Castro Valley	\$50.51	\$33.68	\$376.36	\$689.82	\$49.00
Cupertino	\$33.45	\$28.65	\$216.34	\$522.58	\$50.35
Daly City	\$31.31	\$30.35	\$476.20	\$764.33	\$46.64
El Cerrito	\$54.65	\$54.65	\$789.13	\$581.00	\$136.07
El Sobrante	\$34.95	\$43.58	\$431.21	\$1,061.31	\$93.56
Fremont	\$39.72	\$21.38	\$176.88	\$497.13	\$73.59
Gilroy	\$34.87	\$34.87	\$233.68	\$398.14	\$53.68
Hayward	\$36.63	\$29.64	\$281.40	\$462.87	\$55.67
Hercules	\$38.10	\$43.86	\$509.90	\$1,061.31	\$93.56
Los Altos	\$38.86	\$38.85	\$304.89	\$692.36	\$50.62
Los Gatos	\$32.15	\$17.56	\$256.23	\$551.28	\$54.80
Martinez	\$38.80	\$41.42	\$356.07	\$457.06	\$73.12
Menlo Park	\$36.64	\$51.49	\$249.39	\$628.95	\$118.30
Millbrae	\$35.85	\$34.05	\$325.56	\$667.93	\$67.29
Monte Sereno	\$34.31	\$19.22	\$280.21	\$496.61	\$47.11
Morgan Hill	\$26.55	\$20.84	\$258.67	\$362.27	\$47.03
Palo Alto	\$50.07	\$38.63	\$361.52	\$754.79	\$73.25
Piedmont	\$82.61	\$82.61	\$461.79	\$1,044.39	N/A
Pinole	\$35.39	\$43.40	\$490.73	\$1,061.31	\$93.56
Pittsburg	\$44.69	\$22.35	\$322.35	\$526.40	\$65.30
Richmond	\$39.33	\$47.32	\$477.25	\$1,061.31	\$93.56
San Bruno	\$31.93	\$40.58	\$387.12	\$493.30	\$62.98
San Leandro	\$33.70	\$23.65	\$298.98	\$738.04	\$62.02
San Mateo	\$24.93	\$31.18	\$333.77	\$546.88	\$86.76
San Pablo	\$32.05	\$40.98	\$451.31	\$877.31	\$84.30
Saratoga	\$32.53	\$20.32	\$296.38	\$513.48	\$51.44
Sunnyvale	\$30.86	\$36.58	\$301.25	\$556.72	\$54.25
Union City	\$48.93	\$35.79	\$303.34	\$570.01	\$65.95
Woodside	\$42.66	\$45.64	\$290.54	\$392.00	N/A
Total	\$1,229.97	\$1,135.20	\$11,202.79	\$21,024.12	\$2,106.52
Average	\$38.44	\$35.47	\$350.09	\$657.00	\$70.22

Allowed Percentage of Average

As per Section 6.4	88%	88%	88%	88%	88%
Plus Franchise Fee	<u>14%</u>	<u>14%</u>	<u>14%</u>	<u>14%</u>	<u>14%</u>
Total Allowed	102%	102%	102%	102%	102%
Adjusted Survey Average	39.21	36.18	357.09	670.14	71.62
Current Rate	\$33.99	\$32.06	\$323.92	\$618.73	69.07
Proposed Percentage adjustment	15.36%	12.85%	10.24%	8.31%	3.69%

*CALCULATION NOTES:

In cases where a 32gal residential cart was not available, the per gallon rate of the next closest size (usually a 35gal) was determined and multiplied by 32.

Debris box rates were calculated assuming 3 tons per load. In cases where a 14cy was not offered, the rate for the next closest size (usually a 15, 16 or 20cy) was used; the per yard rate was determined and multiplied by 14.

For jurisdictions not offering a compacted yard rate, a converted rate was calculated by dividing the 20cy compactor rate by 20.

The 20cy compactor rate assumes 7.5 tons.

Jurisdiction	Residential (2021 Survey)						Rate Period Notes	Source(s)
	20gal or similar	20gal converted	32gal or similar	32gal converted				
Alameda	\$34.91	20	\$34.91	\$44.07	32	\$44.07	Effective July 1, 2020	https://www.alamedacountyindustries.com/alameda/residential/residential-services/
Burlingame	N/A	20		\$28.41	32	\$28.41	Effective Jan 1, 2021	https://www.burlingame.org/departments/finance/garbage_utility_(recology).php
Campbell	\$26.38	20	\$26.38	\$33.33	35	\$30.47	Effective July 1, 2020	http://www.westvalleyrecycles.com/service_areas/Campbell-singlefamily-garbage-rates.html
Castro Valley	\$32.58	20	\$32.58	\$50.51	32	\$50.51	Effective July 1, 2020	https://www.cvsan.org/zero_waste/collection_and_curbside_services/rates/residential_services_single-family_rates.php
Cupertino	\$31.45	24	\$26.21	\$33.45	32	\$33.45	Effective Feb 1, 2021	https://www.cupertino.org/home/showpublicdocument?id=28817
Daly City	N/A			\$31.31	32	\$31.31	Effective July 1, 2020	https://www.dalycity.org/DocumentCenter/View/1226/Single-Family-Cart-Service-PDF?bidId=
El Cerrito	\$45.60	20	\$45.60	\$59.77	35	\$54.65	Effective Jan 1, 2021	https://www.el-cerrito.org/DocumentCenter/View/14993/SW-Rates-12012020
El Sobrante	\$30.90	20	\$30.90	\$38.23	35	\$34.95	Effective Jan 1, 2021	https://www.republicservices.com/cms/documents/municipality/ca/west-contra-costa-county/Unincorporated-ResiRates2021.pdf
Fremont	\$38.94	20	\$38.94	\$39.72	32	\$39.72	Effective Jan 1, 2020	https://www.republicservices.com/cms/documents/municipality/ca/FREMONT%2520CA/FremontCA2021Rates.pdf
Gilroy	N/A			\$34.87	32	\$34.87	Effective July 1, 2020	https://www.recyclestuff.org/Guides/Gilroy.pdf
Hayward	\$25.06	20	\$25.06	\$36.63	32	\$36.63	Effective March 1, 2021	https://hayward.legistar.com/View.ashx?M=A&ID=834000&GUID=AF90C29B-EBA0-40F1-B976-469A7904A787
Hercules	\$35.10	20	\$35.10	\$41.67	35	\$38.10	Effective Jan 1, 2021	https://www.republicservices.com/cms/documents/municipality/ca/west-contra-costa-county/Hercules-ResiRates2021.pdf
Los Altos	\$36.07	20	\$36.07	\$38.86	32	\$38.86	Effective July 1, 2020	https://missiontrail.com/LosAltos/residential-services.html

Jurisdiction	Residential (2021 Survey)						Rate Period Notes	Source(s)
	20gal or similar	20gal converted	32gal or similar	32gal converted				
Los Gatos	\$27.69	20	\$27.69	\$35.16	35	\$32.15	Effective July 1, 2020	http://www.westvalleyrecycles.com/serviceareas/Los%20Gatos-singlefamily-garbage-rates.html
Martinez	\$27.09	20	\$27.09	\$38.80	32	\$38.80	Effective April 1, 2021	https://legistarweb-production.s3.amazonaws.com/uploads/attachment/pdf/832442/Exhibit_C_-_2021_Proposed_Rates_2-24-2021.pdf https://legistarweb-production.s3.amazonaws.com/uploads/attachment/pdf/833337/CC_Staff_Report_2021-02-24_-_Republic_Services_Base_Year_Rate_Analysis_and_Setting.pdf
Menlo Park	\$28.31	20	\$28.31	\$36.64	32	\$36.64	Effective Jan 1, 2021	https://www.menlopark.org/DocumentCenter/View/26862/F1-20201208-CC-Solid-waste-rates
Monte Sereno	\$29.60	20	\$29.60	\$37.53	35	\$34.31	Effective July 1, 2020	http://www.westvalleyrecycles.com/serviceareas/Monte-Sereno-singlefamily-garbage-rates.html
Morgan Hill	N/A			\$39.82	48	\$26.55	Effective July 1, 2020	https://www.recyclestuff.org/Guides/Morgan%20Hill.pdf http://www.morgan-hill.ca.gov/DocumentCenter/View/36625/20-024-2020-Solid-Waste-Management-Rate-Adjustment?bidId=
Palo Alto	\$27.81	20	\$27.81	\$50.07	32	\$50.07	Effective July 1, 2017	https://www.cityofpaloalto.org/gov/depts/pwd/zerowaste/projects/refuse.asp#Top%20of%20page
Piedmont	\$85.26	20	\$85.26	\$90.35	35	\$82.61	Effective July 1, 2020	http://piedmont.hosted.civiclive.com/services_departments/planning_building/recycling_organic_waste_garbage/collection_services
Pinole	\$32.07	20	\$32.07	\$38.71	35	\$35.39	Effective Jan 1, 2021	https://www.republicservices.com/cms/documents/municipality/ca/west-contra-costa-county/Pinole-ResiRates2021.pdf
Pittsburg	N/A			\$44.69	32	\$44.69	unknown	https://mdrr.com/pittsburg/pittsburg-residential/
Richmond	\$35.23	20	\$35.23	\$43.02	35	\$39.33	Effective Jan 1, 2021	https://www.republicservices.com/cms/documents/municipality/ca/west-contra-costa-county/Richmond-ResiRates2021.pdf
San Bruno	\$24.76	20	\$24.76	\$31.93	32	\$31.93	Effective July 1, 2020	https://www.sanbruno.ca.gov/documents/New%20Folder/Adopted%20FY2020-21%20Garbage%20Rate%20Adjustment.pdf

Jurisdiction	Residential (2021 Survey)						Rate Period Notes	Source(s)	
	20gal or similar	20gal converted	32gal or similar	32gal converted					
San Leandro	\$27.05	20	\$27.05	\$33.70	32	\$33.70	Effective July 1, 2020	https://www.alamedacountyindustries.com/sanleandro/residential/singlefamily/	
San Mateo	\$15.59	20	\$15.59	\$24.93	32	\$24.93	Effective Jan 1, 2020	https://www.cityofsanmateo.org/2229/Residential-Service-Fees	
San Pablo	\$28.37	20	\$28.37	\$35.06	35	\$32.05	Effective Jan 1, 2021	https://www.republicservices.com/cms/documents/municipality/ca/west-contra-costa-county/San%2520Pablo-ResiRates2021.pdf	
Saratoga	\$28.11	20	\$28.11	\$35.58	35	\$32.53	Effective July 1, 2020	http://www.westvalleyrecycles.com/serviceareas/Saratoga-singlefamily-garbage-rates.html	
Sunnyvale	\$37.36	27	\$27.67	\$41.47	43	\$30.86	Effective July 1, 2020	https://sunnyvale.ca.gov/property/utility/rates/default.htm	https://sunnyvale.ca.gov/civica/x/filebank/blobdload.aspx?blobid=23726
Union City	\$45.72	20	\$45.72	\$53.52	35	\$48.93	Effective July 1, 2020	https://www.unioncity.org/160/Rates-for-Recycling-Garbage	https://www.unioncity.org/DocumentCenter/View/3708/Proposed-2020-21-Collection-Rates-
Woodside	\$26.65	20	\$26.65	\$42.66	32	\$42.66	Effective July 1, 2020	https://www.greenwaste.com/woodside/	

Jurisdiction	Commercial									
	32gal or similar		32gal converted	2cy	14cy or similar (with 3 tons)		14cy converted	compacted yard	20cy compactor (with 7.5 tons)	compacted yard converted
Alameda	\$39.26	32	\$39.26	\$335.71	\$1,011.75	15	\$944.30	N/A	\$1,500.80	\$75.04
Burlingame	\$28.41	32	\$28.41	\$358.56	\$625.00	16	\$546.88	\$77.71	N/A	\$77.71
Campbell	\$15.76	35	\$14.41	\$210.07	\$717.23	20	\$502.06	N/A	\$1,000.01	\$50.00
Castro Valley	\$33.68	32	\$33.68	\$376.36	\$689.82	14	\$689.82	\$49.00	N/A	\$49.00
Cupertino	\$28.65	32	\$28.65	\$216.34	\$597.23	16	\$522.58	\$50.35	N/A	\$50.35
Daly City	\$30.35	32	\$30.35	\$476.20	\$818.92	15	\$764.33	N/A	\$932.83	\$46.64
El Cerrito	\$59.77	35	\$54.65	\$789.13	\$830.00	20	\$581.00	\$136.07	N/A	\$136.07
El Sobrante	\$47.67	35	\$43.58	\$431.21	\$1,061.31	14	\$1,061.31	N/A	\$1,871.29	\$93.56
Fremont	\$21.38	32	\$21.38	\$176.88	\$497.13	14	\$497.13	N/A	\$1,471.83	\$73.59
Gilroy	\$34.87	32	\$34.87	\$233.68	\$568.77	20	\$398.14	N/A	\$1,073.61	\$53.68
Hayward	\$29.64	32	\$29.64	\$281.40	\$462.87	14	\$462.87	N/A	\$1,113.33	\$55.67
Hercules	\$47.97	35	\$43.86	\$509.90	\$1,061.31	14	\$1,061.31	N/A	\$1,871.29	\$93.56
Los Altos	\$38.85	32	\$38.85	\$304.89	\$741.81	15	\$692.36	\$50.62	N/A	\$50.62

Jurisdiction	Commercial									
	32gal or similar		32gal converted	2cy	14cy or similar (with 3 tons)		14cy converted	compacted yard	20cy compactor (with 7.5 tons)	compacted yard converted
Los Gatos	\$19.21	35	\$17.56	\$256.23	\$787.54	20	\$551.28	N/A	\$1,095.98	\$54.80
Martinez	\$41.42	32	\$41.42	\$356.07	\$652.94	20	\$457.06	N/A	\$1,462.40	\$73.12
Menlo Park	\$51.49	32	\$51.49	\$249.39	\$628.95	14	\$628.95	N/A	\$2,366.00	\$118.30
Monte Sereno	\$21.02	35	\$19.22	\$280.21	\$709.44	20	\$496.61	N/A	\$942.27	\$47.11
Morgan Hill	\$20.84	32	\$20.84	\$258.67	\$517.53	20	\$362.27	\$47.03	N/A	\$47.03
Palo Alto	\$38.63	32	\$38.63	\$361.52	\$808.70	15	\$754.79	\$73.25	N/A	\$73.25
Piedmont	\$90.35	35	\$82.61	\$461.79	\$1,044.39	14	\$1,044.39	N/A	N/A	N/A
Pinole	\$47.47	35	\$43.40	\$490.73	\$1,061.31	14	\$1,061.31	N/A	\$1,871.29	\$93.56
Pittsburg	\$22.35	32	\$22.35	\$322.35	\$752.00	20	\$526.40	N/A	\$1,306.00	\$65.30

Jurisdiction	Commercial									
	32gal or similar		32gal converted	2cy	14cy or similar (with 3 tons)		14cy converted	compacted yard	20cy compactor (with 7.5 tons)	compacted yard converted
Richmond	\$51.76	35	\$47.32	\$477.25	\$1,061.31	14	\$1,061.31	N/A	\$1,871.29	\$93.56
San Bruno	\$40.58	32	\$40.58	\$387.12	\$563.77	16	\$493.30	\$62.98	N/A	\$62.98
San Leandro	\$23.65	32	\$23.65	\$298.98	\$790.76	15	\$738.04	N/A	\$1,240.30	\$62.02
San Mateo	\$31.18	32	\$31.18	\$333.77	\$625.00	16	\$546.88	N/A	\$1,735.25	\$86.76
San Pablo	\$44.82	35	\$40.98	\$451.31	\$877.31	14	\$877.31	N/A	\$1,686.00	\$84.30
Saratoga	\$22.23	35	\$20.32	\$296.38	\$733.54	20	\$513.48	N/A	\$1,028.83	\$51.44
Sunnyvale	\$40.01	35	\$36.58	\$301.25	\$596.49	15	\$556.72	N/A	\$1,084.96	\$54.25
Union City	\$39.14	35	\$35.79	\$303.34	\$570.01	14	\$570.01	N/A	\$1,318.90	\$65.95
Woodside	\$45.64	32	\$45.64	\$290.54	\$560.00	20	\$392.00	N/A	N/A	N/A

***CALCULATION/CONVERSION NOTES:**

For jurisdictions with carts other than 32gal, a per gallon rate was determined and multiplied by 32.

For jurisdictions with roll-off other than 14yd, a per yard rate was determined and multiplied by 14.

For jurisdictions not offering a compacted yard rate, a converted rate was calculated by dividing the 20cy compactor rate by 20.

Jurisdiction	Commercial	Sources		
	Misc. Notes			
Alameda	96g of recycling & 96gal or organics included in garbage rate. Additional for a charge.	https://www.alamedacountyindustries.com/alameda/commercial/commercialservices/bins/	https://www.alamedacountyindustries.com/alameda/commercial/recyclables/	https://www.alamedacountyindustries.com/alameda/commercial/commercialservices/debris/
Burlingame	Garbage rate includes recycling.	https://www.burlingame.org/departments/finance/garbage_utility_(recology).php	John Mangini <jmangini@rethinkwaste.org>	
Campbell	Garbage rate includes service of same level of recycling.	http://www.westvalleyrecycles.com/serviceareas/Campbell-commercial-garbage-rates.html	https://www.wvswma.org/uploads/2/15/7/13/25736194/wvcr_rates.pdf	https://www.recyclestuff.org/Guides/Campbell.pdf
Castro Valley	Garbage rate does not include recycling/organics.	https://www.cvsan.org/zero_waste/collection_and_curbside_services/rates/commercial_service_rates.php#	https://www.cvsan.org/zero_waste/collection_and_curbside_services/rates/construction_and_demolition_debris_rates.php#	https://www.alamedacountyindustries.com/cvsan/commercial/rates/
Cupertino	Garbage rate does not include recycling/organics.	https://www.cupertino.org/home/showpublisheddocument?id=28811	https://www.cupertino.org/home/showpublisheddocument?id=28813	
Daly City	Garbage rate includes recycling.	https://www.dalycity.org/DocumentCenter/View/1222/Commercial-and-Multi-Family-Bin-Service-PDF?bidId=	https://www.dalycity.org/DocumentCenter/View/1223/Commercial-Cart-Service-PDF?bidId=	https://www.dalycity.org/DocumentCenter/View/1224/Debris-Box-and-Compactor-Service-PDF?bidId=
El Cerrito	Garbage rate includes recycling and a base level of organics service.	https://www.el-cerrito.org/DocumentCenter/View/14993/SW-Rates-12012020	Phone call with Cara Figone 510.237.4321	
El Sobrante	Garbage rate includes service of same level of recycling.	https://www.republicservices.com/cms/documents/municipality/ca/west-contra-costa-county/Unincorporated-CommRates2021.pdf	https://www.republicservices.com/municipality/wccc-ca	Roof, Angela <ARoof@republicservices.com>
Fremont	Garbage rate does not include recycling/organics.	https://www.republicservices.com/cms/documents/municipality/ca/FREMONT%20CA/FremontCA2021Rates.pdf	Evan Boyd <eboyd@republicservices.com>	
Gilroy	Garbage rate includes recycling.	https://www.recyclestuff.org/Guides/Gilroy.pdf		
Hayward	Garbage rate does not include recycling/organics.	https://hayward.legistar.com/View.aspx?M=A&ID=834000&GUID=AF90C29B-EBA0-40F1-B976-469A7904A787	https://www.hayward-ca.gov/sites/default/files/Hayward%20Garbage%20Rates%203.1.2020-2.28.2021.pdf	
Hercules	Garbage rate includes recycling and a base level of organics service.	https://www.republicservices.com/cms/documents/municipality/ca/west-contra-costa-county/Hercules-CommRates2021.pdf	https://www.republicservices.com/municipality/wccc-ca	Roof, Angela <ARoof@republicservices.com>
Los Altos	Garbage rate includes appropriate level of recycling and organics service.	https://missiontrail.com/LosAltos/commercial-services-bins.html	https://missiontrail.com/LosAltos/commercial-services-debris.html	

Jurisdiction	Commercial	Sources		
	Misc. Notes			
Los Gatos	Garbage rate includes service of same level of recycling.	http://www.westvalleyrecycles.com/serviceareas/Los-Gatos-commercial-garbage-rates.html	https://www.wvswma.org/uploads/2/15/7/3/25736194/wvcr_rates.pdf	
Martinez	Garbage rate includes appropriate level of recycling and organics service.	https://legistarweb-production.s3.amazonaws.com/uploads/attachment/pdf/832442/Exhibit_C_-_2021_Proposed_Rates_2-24-2021.pdf		
Menlo Park	Garbage rate does not include recycling/organics.	https://www.menlopark.org/DocumentCenter/View/26862/F1-20201208-CC-Solid-waste-rates		
Monte Sereno	Garbage rate includes service of same level of recycling.	http://www.westvalleyrecycles.com/serviceareas/Monte-Sereno-commercial-garbage-rates.html	https://www.wvswma.org/uploads/2/15/7/3/25736194/wvcr_rates.pdf	
Morgan Hill	Garbage rate includes recycling.	http://www.morgan-hill.ca.gov/DocumentCenter/View/36625/20-024-2020-Solid-Waste-Management-Rate-Adjustment?bidId=		
Palo Alto	Garbage rate includes recycling.	https://www.cityofpaloalto.org/civica/xfile/bank/documents/8114	https://www.greenwasteofpaloalto.com/debris-box-and-deconstruction-services	
Piedmont	Garbage rate includes appropriate level of recycling and organics service.	Roof, Angela <ARoof@republicservices.com>	https://www.republicservices.com/municipality/piedmont-ca?ef_id=CjwKCAjwxuuCBhATEiwAllzOYN3pJHs9IqS7tGB1mWbEkKLSXMrAEiAy_L4Sa4LkNGtL8kNRJhHBoCbNUQAvD_BwE:Gs&s_kwcid=AL155681314237277903031b!!g!!195238071451102703739892&utm_source=google&utm_medium=cpc&utm_campaign=Core%3EEcommerce%3EDSA&utm_content=DSA%3ECatch%3EAll&utm_term=&gclid=CjwKCAjwxuuCBhATEiwAllzOYN3pJHs9IqS7tGB1mWbEkKLSXMrAEiAy_L45a4LkNGtL8kNRJhHBoCbNUQAvD_BwE	
Pinole	Garbage rate includes recycling and a base level of organics service.	https://www.republicservices.com/documents/municipality/ca/west-contra-costa-county/Pinole-CommRates2021.pdf	https://www.republicservices.com/municipality/wccc-ca	Roof, Angela <ARoof@republicservices.com>
Pittsburg	Garbage rate does not include recycling/organics.	https://mdrr.com/wp-content/uploads/2020/12/Pittsburg-Commercial-Rates-012021.pdf	Pittsburg Disposal Customer Service, 925-432-6262	Mt. Diablo, Bill Frasier, 925-692-2268, billy.frasier@mdrr.com

Jurisdiction	Commercial	Sources		
	Misc. Notes			
Richmond	Garbage rate includes recycling and a base level of organics service.	https://www.republicservices.com/cms/documents/municipality/ca/west-contra-costa-county/Richmond-CommRates2021.pdf	https://www.republicservices.com/municipality/wccc-ca	Roof, Angela <ARoof@republicservices.com>
San Bruno	Garbage rate includes recycling.	https://www.sanbruno.ca.gov/documents/New%20Folder/Adopted%20FY2020-21%20Garbage%20Rate%20Adjustment.pdf		
San Leandro	96g of recycling & 96gal or organics included in garbage rate. Additional for a charge.	https://www.alamedacountyindustries.com/sanleandro/commercial/commercialservices/bins/	https://www.alamedacountyindustries.com/sanleandro/commercial/recyclables/	https://www.alamedacountyindustries.com/sanleandro/commercial/commercialservices/debris/
San Mateo	Garbage rate includes recycling.	https://www.cityofsanmateo.org/DocumentCenter/View/78847/2020-Solid-Waste-Commercial-Cans?bidId=	https://www.cityofsanmateo.org/DocumentCenter/View/78893/2020-Solid-Waste-Rates-Compactors-and-Specials?bidId=	https://www.cityofsanmateo.org/DocumentCenter/View/78891/2020-Solid-Waste-Commercial-Bins?bidId=
San Pablo	Garbage rate includes recycling and a base level of organics service.	https://www.republicservices.com/cms/documents/municipality/ca/west-contra-costa-county/San%2520Pablo-CommRates2021.pdf	https://www.republicservices.com/municipality/wccc-ca	Roof, Angela <ARoof@republicservices.com>
Saratoga	Garbage rate includes service of same level of recycling.	http://www.westvalleyrecycles.com/serviceareas/Saratoga-commercial-garbage-rates.html	https://www.wvswma.org/uploads/2015/7/3/25736194/wvcr_rates.pdf	
Sunnyvale	Garbage rate includes recycling.	https://sunnyvale.ca.gov/civicax/filebank/blobdload.aspx?blobid=23726		
Union City	Garbage rate does not include recycling/organics.	https://www.unioncity.org/DocumentCenter/View/3708/Proposed-2020-21-Collection-Rates-		
Woodside	Garbage rate includes recycling.	https://www.greenwaste.com/woodsidede/		

South San Francisco Scavenger Company Rates and Adjustments Thereto

~~Increases or decreases in maximum rates pursuant to this Section 6.3 shall take effect so as to eliminate, to the maximum extent possible, Scavenger Company's loss or gain of revenue and/or profit resulting from the extraordinary increase or decrease in costs from the date(s) such increase or decrease first occurred.~~

6.4 Modification Based on Neighboring Cities' Rates. Irrespective of any adjustments to maximum rates pursuant to Sections 6.2 and/or 6.3 above, every maximum service rate applicable under this Agreement shall be adjusted effective as of July 1 in each of the years 2015 and every third year thereafter (i) in the case of each of the service categories set forth in Exhibit C attached to this Agreement, so as to equal eighty-eight percent (88%) plus the percentage of the Franchise Fee times the average of the most current rates for such service category charged in the jurisdictions set forth in Exhibit D, and (ii) in the case of every other service category not set forth on Exhibit C, so as to equal an amount reasonably arrived at by extrapolating from the new rates determined in accordance with Section 6.4(i) above. The most current rate charged in each jurisdiction listed in Exhibit D for a service category listed in Exhibit C shall mean the rate that applies as of the date Scavenger Company files the Notice of Intention described in Section 6.4(a) below, and shall be based on the actual published rate for a period including such date. The average of the most current rates for a particular service category listed on Exhibit C shall be determined by adding all the most current rates for such service category, and dividing by the number of jurisdictions set forth in Exhibit D. The procedure for rate adjustments under this Section 6.4 shall be as follows.

(a) Not later than March 31st of each year that is subject to a rate adjustment under this Section 6.4, Scavenger Company shall file with City a written Notice of Intention to adjust, effective as of July 1st of the same year, each of the then current maximum service rates in accordance with Section 6.4 above.

An example of such calculation for an Exhibit C service category and for a related service category not listed in Exhibit C is as follows: if the total of the most current rates in the applicable jurisdictions, which number thirty-two (32), for weekly 2-yard commercial front end loader service per month as of March 31, 2018 were \$4,800, Scavenger Company's Notice of Intention for July 1, 2018 would specify \$150.00 [$\$4,800$ divided by 32 multiplied by .88 plus the percentage of the Franchise Fee] as the new maximum rate for such service category, and could specify \$300.00 for weekly 4-yard commercial front end loader service per month.

(b) Within thirty (30) days of the filing of the Notice of Intention, the City Manager shall review the Notice of Intention, and either confirm that the

proposed maximum rates conform with Section 6.4 above, or meet with Scavenger Company to establish by mutual agreement with Scavenger Company any necessary changes to the proposed maximum rates to make such confirmation.

- (c) The City Manager shall immediately inform the City Council in writing of the new maximum rates determined in accordance with this Section 6.4 and, not later than June 30th of the year of the Notice of Intention, the City Council shall act upon the new maximum rates as appropriate, with any new maximum rates to become effective on July 1st of the same year.
- (d) From time to time during the term hereof, the list of jurisdictions set forth in Exhibit D shall be changed to conform to any changes in the list of benchmarking jurisdictions set forth in that certain Agreement for the Collection and Disposal of Solid Waste Matter in the City of South San Francisco between Scavenger Company and such City dated July 9, 1997, as amended and as may be further amended from time to time, each such change to be contemporaneous with the corresponding change in South San Francisco.

~~6.5 Potential Rate Constraints. The parties recognize that, as of the date this Agreement is entered into, there is no authoritative judicial determination of whether Articles XIII C or XIII D of the California Constitution apply to charges imposed by private enterprises for solid waste handling and recycling services when those charges are regulated by a local government.~~

~~The City will not be in default of this Agreement if (i) a majority protest or referendum prevents the initial maximum rates or a proposed maximum rate increase from being adopted, (ii) a court rules that maximum rates adopted by City are not consistent with Article XIII C or D, or (iii) a voter initiative not endorsed by City reduces maximum rates from those in effect. After the occurrence of any event referred to in clauses (i)-(iii) above, the parties shall promptly meet and negotiate in good faith to adjust service levels commensurate with the rates that Scavenger Company may legally charge, in a manner reasonably calculated (given such rates) to minimize any adverse effect on public health and safety and to allow Scavenger Company to cover its necessary costs plus a commercially reasonable profit.~~

~~Nothing in this Agreement shall be deemed or construed to be an admission by City or Scavenger Company that Articles XIII C or XIII D of the California Constitution apply to the rates charged by Scavenger Company under this Agreement.~~