

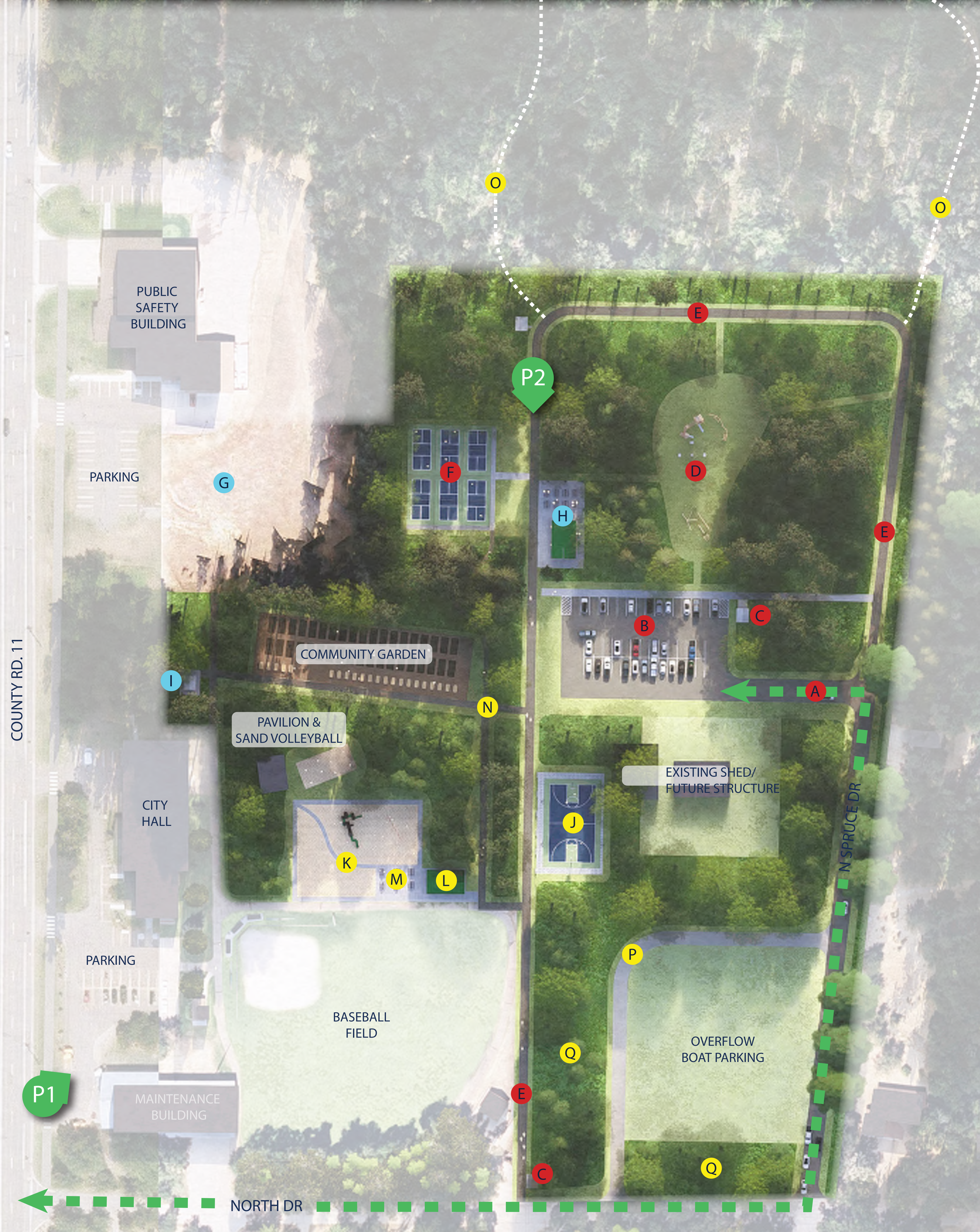
LEGEND

- 
 FUTURE MULTI-USE TRAIL (BY CITY OF BREEZY POINT)
- 
 FUTURE PARK BOUNDARY
- 
 FUTURE TRAIL NETWORK (APPX. 1.5 MILES)
- 
 CITY-OWNED LAND
- 
 FUTURE CITY LAND ACQUISITION (24 ACRES)

BREEZY POINT PARK MASTERPLAN - OVERVIEW

BREEZY POINT, MINNESOTA

WIDSETH

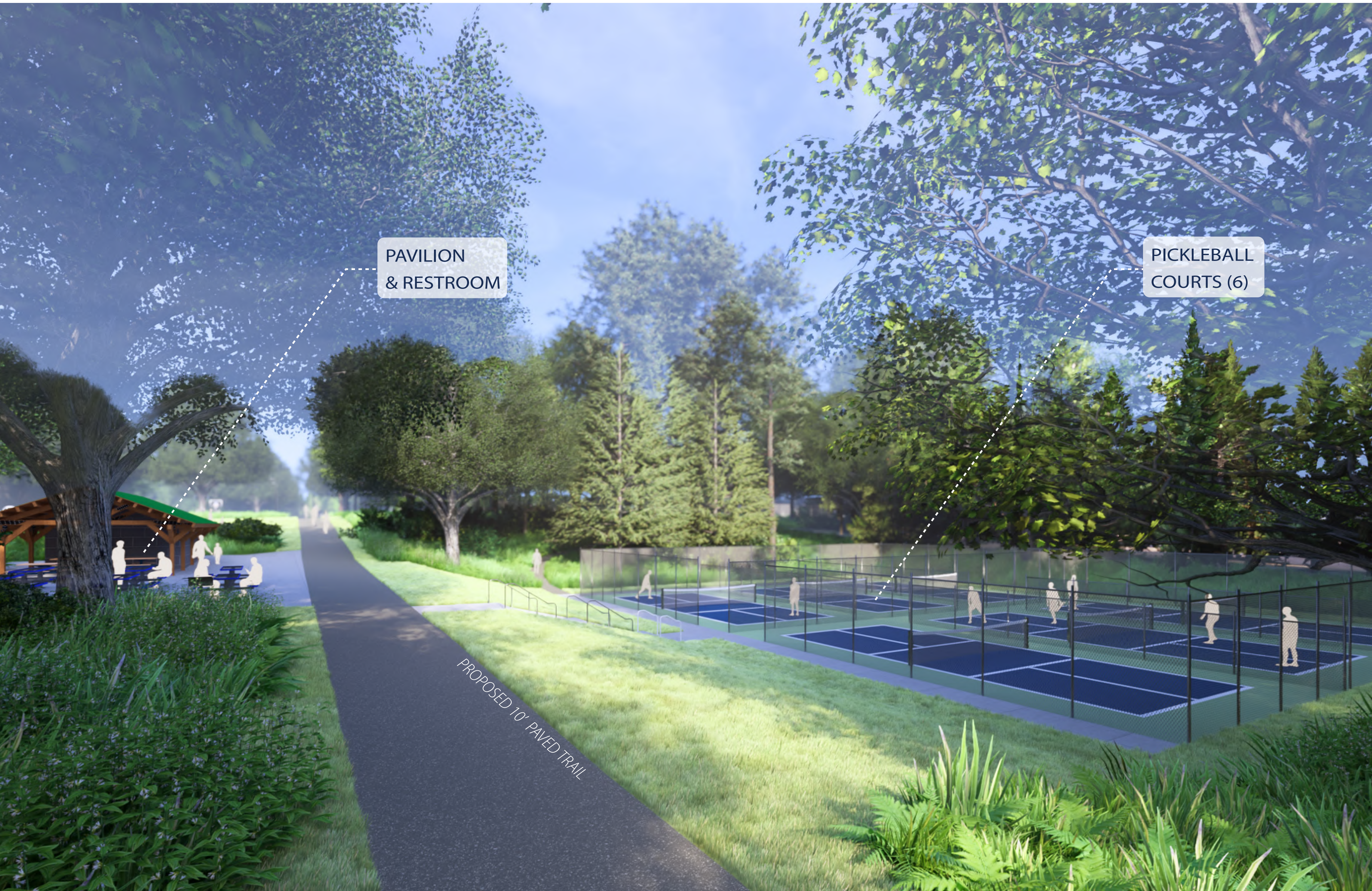


PARK MASTER PLAN LEGEND

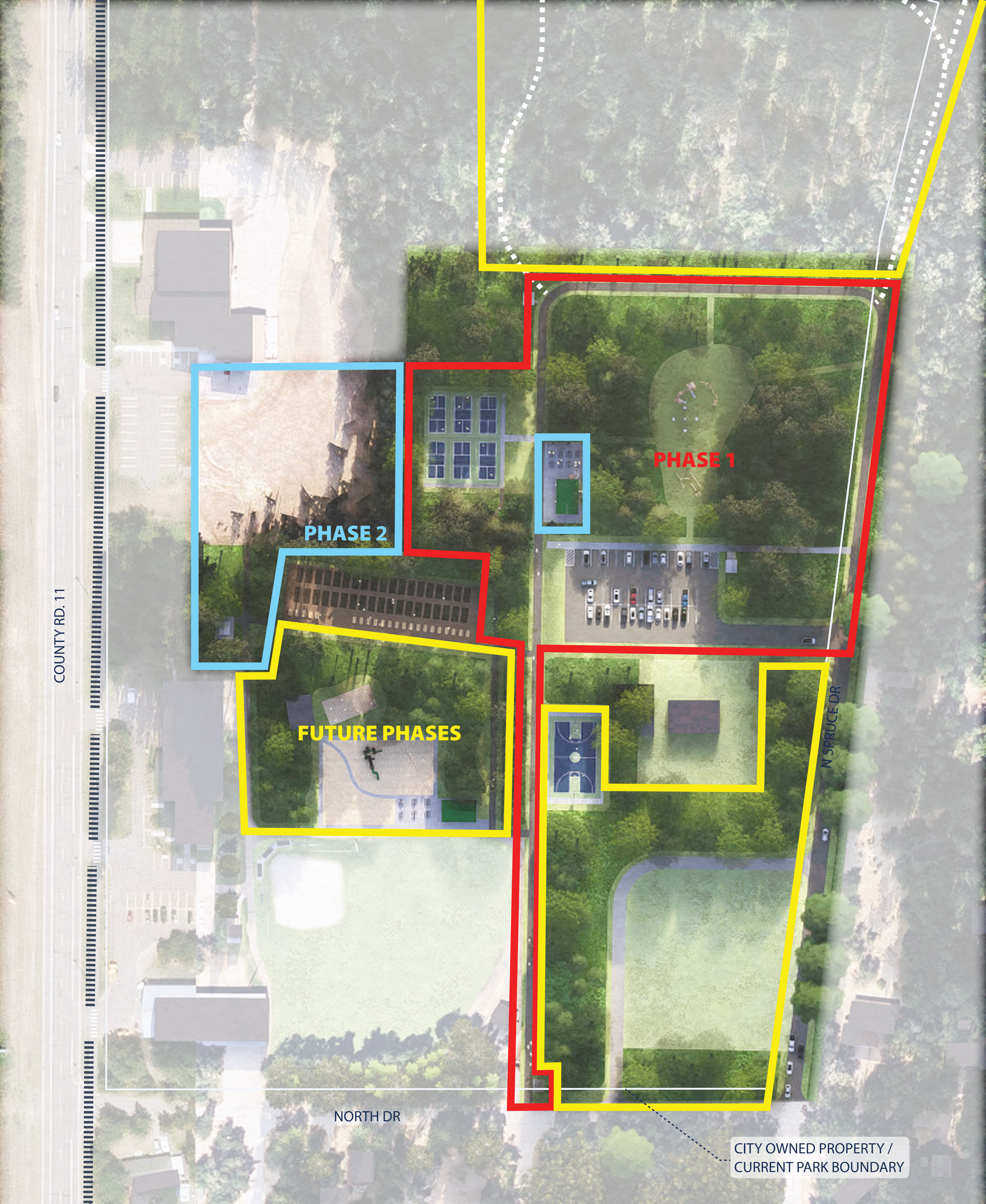
- | | | |
|------------------------|--|----------------------------------|
| ● PHASE 1 | ● WALKING TRAIL | ● RELOCATED PAVILION |
| ● PHASE 2 | ● PICKLE BALL COURTS (6) | ● PICNIC AREA |
| ● FUTURE PHASE | ● SLEDDING HILL | ● IMPROVED SIDEWALK CONNECTIONS |
| ● A PARK MAIN ENTRANCE | ● H PAVILION & RESTROOM | ● O SOFT SURFACE TRAIL |
| ● B PARKING LOT | ● I TRAILHEAD KIOSK | ● P ACCESS ROAD |
| ● C TRAILHEAD KIOSK | ● J BASKETBALL COURT LOCATION (FUTURE PHASE) | ● Q TREE BUFFER |
| ● D NATURE PLAYGROUND | ● K PLAYGROUND & ADA UPDATES | ■ VEHICULAR TRAFFIC FLOW PATTERN |



P1 BIRDS-EYE VIEW | FULL MASTERPLAN BUILD-OUT (PHASE 1, 2 & FUTURE PHASES)



P2 VIEW LOOKING SOUTH | FULL MASTERPLAN BUILD-OUT (PHASE 1, 2 & FUTURE PHASES)



COUNTY RD. 11

PHASE 2

PHASE 1

FUTURE PHASES

NORTH DR

N SPRUCE DR

CITY OWNED PROPERTY /
CURRENT PARK BOUNDARY

FUTURE MULTI-USE TRAIL
BY CITY OF BREEZY POINT

LEGEND

- PHASE 1 - MAIN ENTRANCE & PARKING LOT, NATURE PLAYGROUND, 10' PAVED TRAIL, PICKLE BALL COURT, ADA ACCESSIBLE WALKWAYS
- PHASE 2 - PAVILION & RESTROOM, SLEDDING HILL, SECONDARY ENTRANCE & KIOSK
- FUTURE PHASES - ADA PLAYGROUND IMPROVEMENTS, RELOCATE BASKETBALL COURT, UPGRADES TO OVERFLOW BOAT PARKING, SOFT SURFACE TRAILS