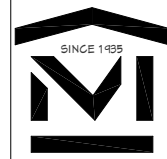


MULTIPLE CHANGES MAY HAVE BEEN DONE TO THIS PLAN. PLEASE VERIFY DRAINS NUMBER AND DATE BEFORE START OF CONSTRUCTION



THESE PLANS ARE FURNISHED BY MERICKEL LUMBER, INC. BY OUR EXPERIENCED DRAFTSPERSON. THEY HOWEVER ARE NOT FULLY QUALIFIED AS CERTIFIED ENGINEER OR ARCHITECTS. MERICKEL LUMBER, INC. DISCLAIMS ANY AND ALL LIABILITY. IT IS THE RESPONSIBILITY OF THE HOMEOWNER TO INSPECT THE PLAN.

MULTIPLE CHANGES MAY HAVE BEEN DONE TO THIS PLAN. PLEASE VERIFY DRAINS NUMBER & DATE BEFORE START OF CONSTRUCTION.

MERICKEL LUMBER, INC.

HIGHWAY 10 WEST P.O. BOX 471
(218) 631-3570 (800) 225-3570 ML@MCLTA.NET

BREEZY POINT

GREG SALBER CONST

SALESPERSON: GC

PROJECT NUMBER

BJ526067

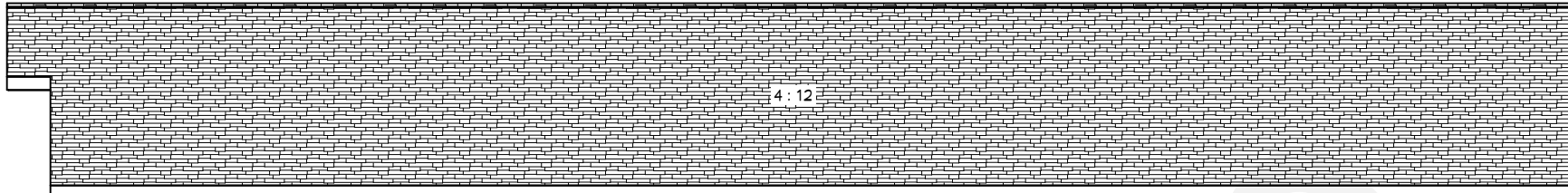
DESIGN DATE

2/9/26

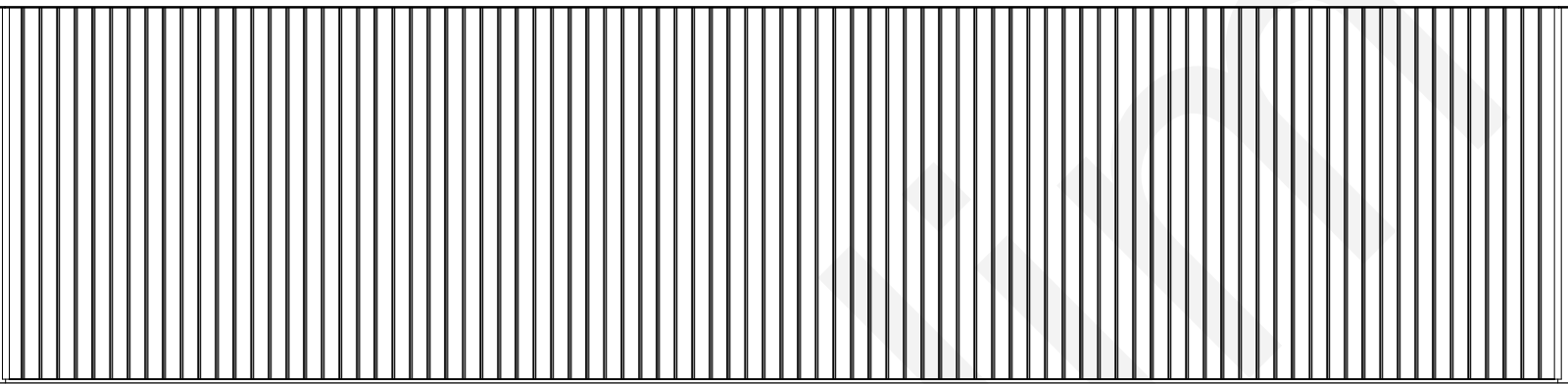
LAST REVISION

SHEET

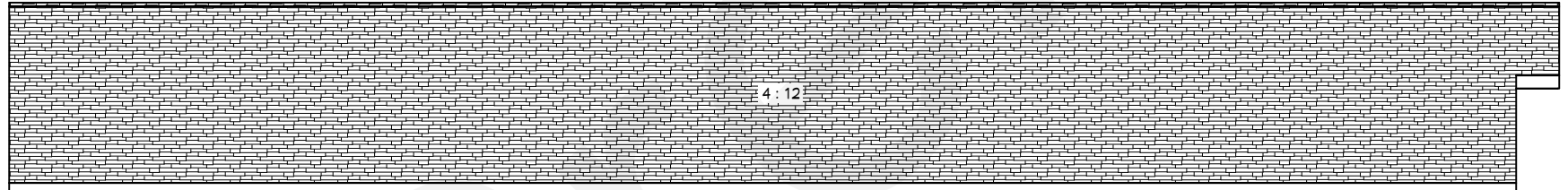
1 OF 4



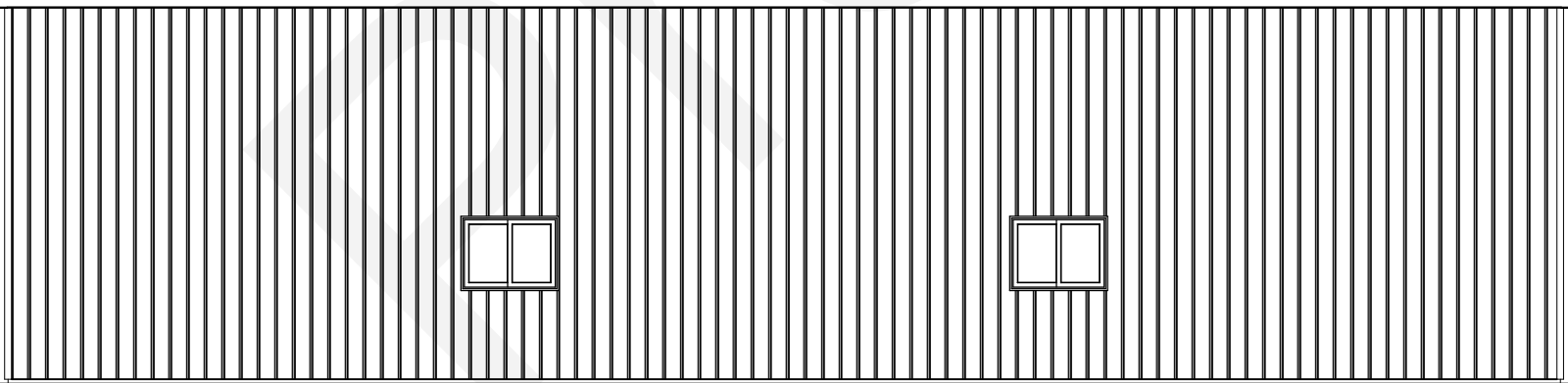
4:12



ELEVATION #1
1/8 IN = 1 FT



4:12



ELEVATION #2
1/8 IN = 1 FT

MULTIPLE CHANGES MAY HAVE BEEN DONE TO THIS PLAN. PLEASE VERIFY DRAINS NUMBER AND DATE BEFORE START OF CONSTRUCTION



THESE PLANS ARE FURNISHED BY MERICKEL LUMBER, INC. BY OUR EXPERIENCED DRAFTSPERSON. THEY HOWEVER ARE NOT FULLY QUALIFIED AS CERTIFIED ENGINEER OR ARCHITECTS. MERICKEL LUMBER, INC. DISCLAIMS ANY AND ALL LIABILITY. IT IS THE RESPONSIBILITY OF THE HOMEOWNER TO INSPECT THE PLAN.

MULTIPLE CHANGES MAY HAVE BEEN DONE TO THIS PLAN. PLEASE VERIFY DRAWING NUMBER & DATE BEFORE START OF CONSTRUCTION.

MERICKEL LUMBER, INC.

HIGHWAY 10 WEST P.O. BOX 471
(218) 631-3570 (800) 225-3570 ML@MGLTA.NET

BREEZY POINT

GREG SALBER CONST

SALESPERSON:GC

PROJECT NUMBER

BJ526067

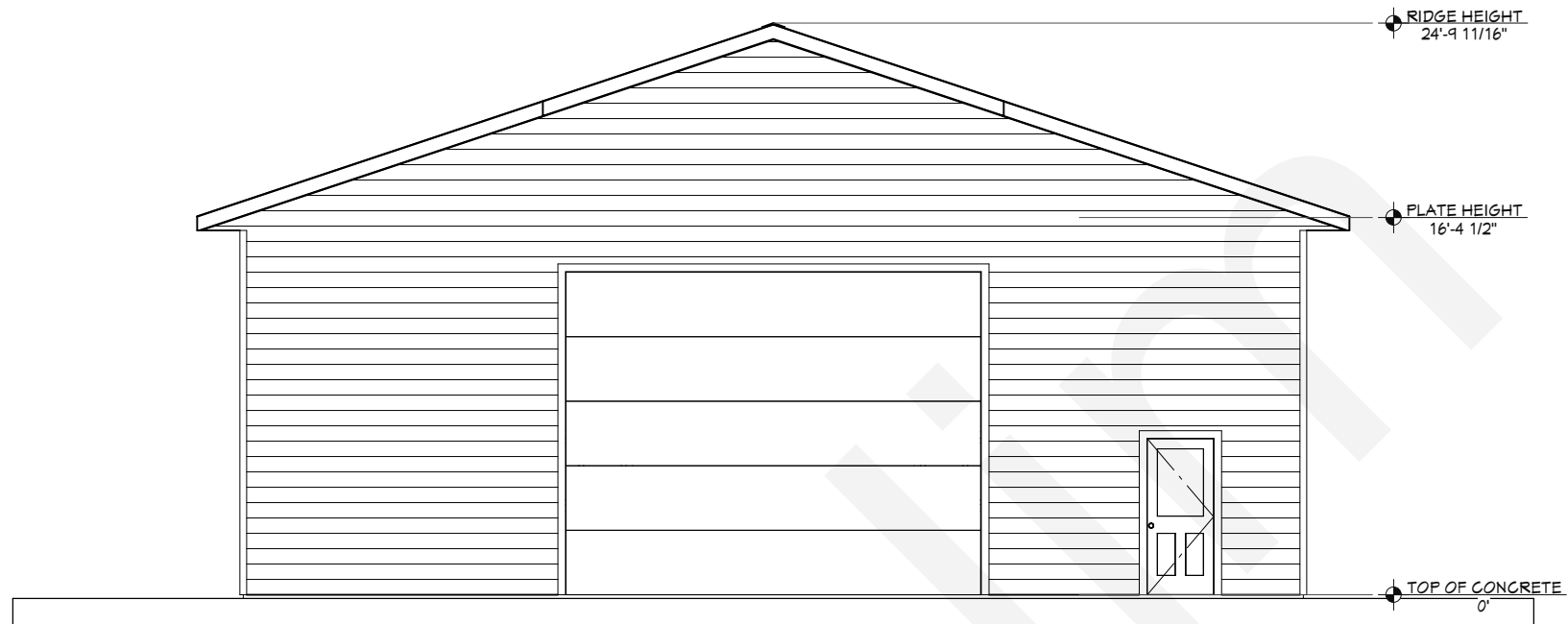
DESIGN DATE

2/9/26

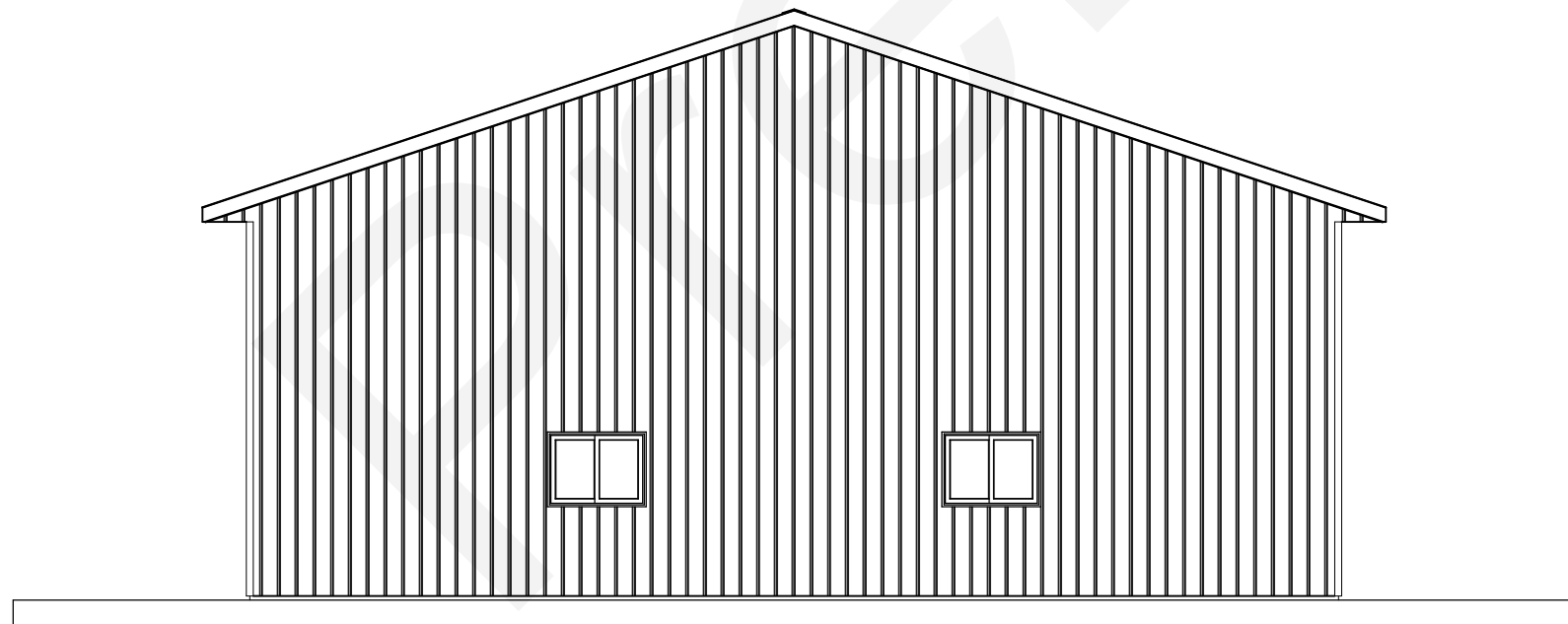
LAST REVISION

SHEET

2 OF 4

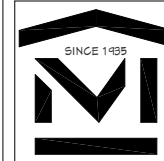


ELEVATION #3
1/8 IN = 1 FT



ELEVATION #4
1/8 IN = 1 FT

MULTIPLE CHANGES MAY HAVE BEEN DONE TO THIS PLAN. PLEASE VERIFY DRAINS NUMBER AND DATE BEFORE START OF CONSTRUCTION



THESE PLANS ARE FURNISHED BY MERICKEL LUMBER, INC. BY OUR EXPERIENCED DRAFTSPERSON. THEY, HOWEVER, ARE NOT FULLY QUALIFIED AS CERTIFIED ENGINEER OR ARCHITECTS. MERICKEL LUMBER, INC. DISCLAIMS ANY AND ALL LIABILITY. IT IS THE RESPONSIBILITY OF THE HOMEOWNER TO INSPECT THE PLAN.

MULTIPLE CHANGES MAY HAVE BEEN DONE TO THIS PLAN. PLEASE VERIFY DRAWING NUMBER & DATE BEFORE START OF CONSTRUCTION.

MERICKEL LUMBER, INC.

HIGHWAY 10 WEST P.O. BOX 471
(218) 631-3570 (800) 225-3570 ML@MGLTA.NET

BREEZY POINT
GREG SALBER CONST

SALESPERSON: GC

PROJECT NUMBER

BJ526067

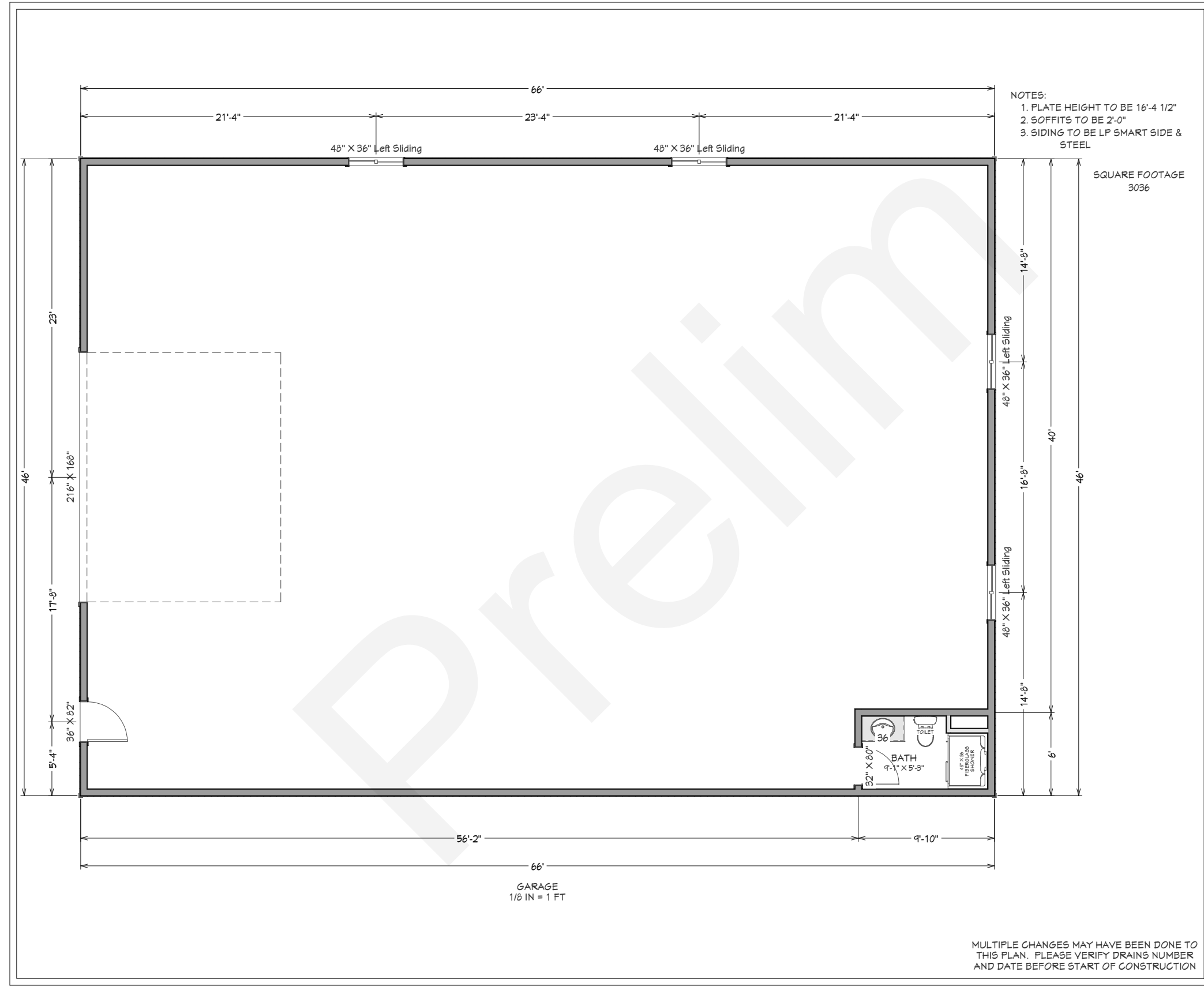
DESIGN DATE

2/9/26

LAST REVISION

SHEET

3 OF 4



THESE PLANS ARE FURNISHED BY MERICKEL LUMBER, INC. BY OUR EXPERIENCED DRAFTSPERSON. THEY, HOWEVER, ARE NOT FULLY QUALIFIED AS CERTIFIED ENGINEER OR ARCHITECTS. MERICKEL LUMBER, INC. DISCLAIMS ANY AND ALL LIABILITY. IT IS THE RESPONSIBILITY OF THE HOMEOWNER TO INSPECT THE PLAN.

MULTIPLE CHANGES MAY HAVE BEEN DONE TO THIS PLAN. PLEASE VERIFY DRAWING NUMBER & DATE BEFORE START OF CONSTRUCTION.

MERICKEL LUMBER, INC.
 HIGHWAY 10 WEST P.O. BOX 471
 (218) 631-3570 (800) 225-3570 MLJ@MCTA.NET

BREEZY POINT
GREG SALBER CONST

SALESPERSON: GC
PROJECT NUMBER BJ526067
DESIGN DATE 2/9/26
LAST REVISION

SHEET
4 OF 4

MULTIPLE CHANGES MAY HAVE BEEN DONE TO THIS PLAN. PLEASE VERIFY DRAINS NUMBER AND DATE BEFORE START OF CONSTRUCTION