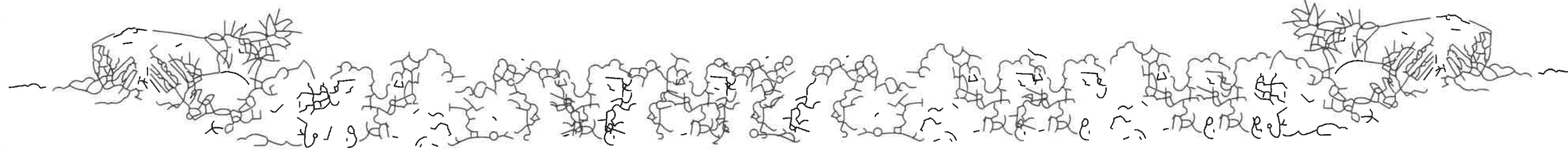


# MOSBRUCKER GARAGE - REIMAGINED



## 11180 OLD CTY RD 39, BREEZY POINT - LAKE OSSAWINNAMAKEE



### BID NOTES:

#### GENERAL NOTES:

- 1.) SECURITY SYSTEM
- 2.) MATCH HOUSE FINISHES
- 3.) VERIFY ALL FINISHES W/ CLIENT

#### CLIENT TO COMPLETE:

- 1.) LOW VOLTAGE / CAMERA LINES
- 2.) BARN DOORS
- 3.) INTERIOR TRIM
- 4.) SHELVING - STORAGE + WORKSHOP

#### EXTERIOR:

- 1.) STONE
  - NA
- 2.) SIDING
  - L.P. SMARTSIDE TEXTURED - 7.84" LAP (REVEAL - MATCH HOUSE)
  - PAINTED (COLOR TBD)

- 3.) TRIM - LP SMARTSIDE TEXTURED (DARKER - BROWN) verify w/ client

- CORNER TRIM
- 540x6 TRIM
- DOOR AND WINDOW
- HEADS = 540 X 4
- SIDES = 540 X 4
- SILLS = 540 X 4 @ 15 DEGREE ANGLE
- MID FRIEZE = 540 X 8
- GABLE & SHED FRIEZE = 540 X 4

- 4.) WINDOWS - SEE SCHEDULE
  - MARVIN ULTIMATE (COLOR = GREEN EXT)
  - (ANDERSON 400 SERIES - OPTION)
  - (PELLA LIFESTYLE SERIES - OPTION)

- 5.) DOORS - SEE SCHEDULES FOR DETAILS
  - STEEL - PAINTED
  - HARDWARE = EMTEK (FLAT BLACK)

- 6.) SOFFIT
  - LP VENTED BRUSHED SMOOTH SOFFIT

- 7.) FASCIA
  - LP SMOOTH - 540 X 3 OVER 540x8 (COLOR MATCH HOUSE)

- 8.) ROOFING
  - TIMBERLINE H.D. SHINGLE (COLOR = MATCH HOUSE)

- 9.) DECKING
  - NA

- 10.) BRACKETS & POSTS
  - STAINED R.S. CEDAR (COLOR TBD)

#### INTERIOR:

- 1.) WALLS
  - GYP + FIRETAPE
  - (GYP - SMOOTH PAINTED- OPTION)
- 2.) FLOOR
  - ML CONCRETE, UNFINISHED - (EPOXY - OPTION)
  - UL: UNFINISHED

- 3.) CEILING
  - GYP + FIRETAPE
  - (MED KNOCKDOWN GYP PAINTED - OPTION)

- 3.) DOORS
  - MATERIAL = STEEL
  - STYLE = 6 - PANEL
  - STICKING = TAPERED
  - FINISH = PAINTED (COLOR TBD)

- 4.) DOOR HARDWARE
  - BRAND = EMTEK
  - STYLE = LEVER
  - COLOR = BLACK
  - HINGES = SQUARE - BLACK

- 5.) TRIM (CLIENT TO COMPLETE)
  - NA

- 6.) PAINTING / STAINING (CLIENT TO COMPLETE)
  - NA

- 7.) RAILING
  - 1/2 WALL

#### INSULATION:

- 1.) FOUNDATION WALLS
  - 2" RIGID INSUL. @ EXTERIOR
- 2.) FLOOR RIM
  - SPRAY FOAM
- 3.) FLOOR
  - MAIN LEVEL FLOOR
  - NA
  - UPPER LEVEL FLOOR
  - NA
- 5.) EXTERIOR WD. FRAMED WALLS
  - R-24 BLOWN-IN BLANKET
- 6.) INTERIOR WD. FRAMED WALLS
  - SOUND BATT - SEE PLANS
- 7.) ATTIC
  - R-50 BLOWN-IN

#### PLUMBING:

- 1.) SEE ELECTRICAL SHEETS FOR DETAILS
- 2.) SINKS
  - NA

#### HVAC:

- 1.) SEE ELECTRICAL SHEETS FOR DETAILS

#### ELECTRICAL:

- 1.) SEE ELECTRICAL SHEETS FOR DETAILS

SHEET INDEX	
Sheet Number	SHEET NAME
T0.0	TITLE SHEET
-	CERTIFICATE OF SURVEY
A0.1	ARCHITECTURAL SITE PLAN
A1.0	FOUNDATION PLAN + DETAILS + ROOF PLAN
A1.2	MAIN + UPPER LEVEL FLOOR PLAN + SCHEDULES
A2.1	EXTERIOR ELEVATION
A3.2	BUILDING SECTIONS
A3.3	BUILDING SECTIONS
E1.1	MAIN + UPPER LEVEL ELECTRICAL PLAN

34103 COUNTY ROAD 3  
CROSSLAKE, MN 56442  
PHONE (218) 692-1760  
FAX (218) 692-1770

**WES HANSON** BUILDERS Inc.  
GENERAL CONTRACTORS  
AND PROFESSIONAL DESIGN

REVISIONS

MOSBRUCKER GARAGE - REIMAGINED  
MOSBRUCKER, BARRY + BECKY  
11180 OLD CTY RD 39, BREEZY POINT - LAKE OSSAWINNAMAKEE  
TITLE SHEET

DRAWN BY: ECO  
CHECKED BY: MWS  
DATE: 5.5.26

T0.0

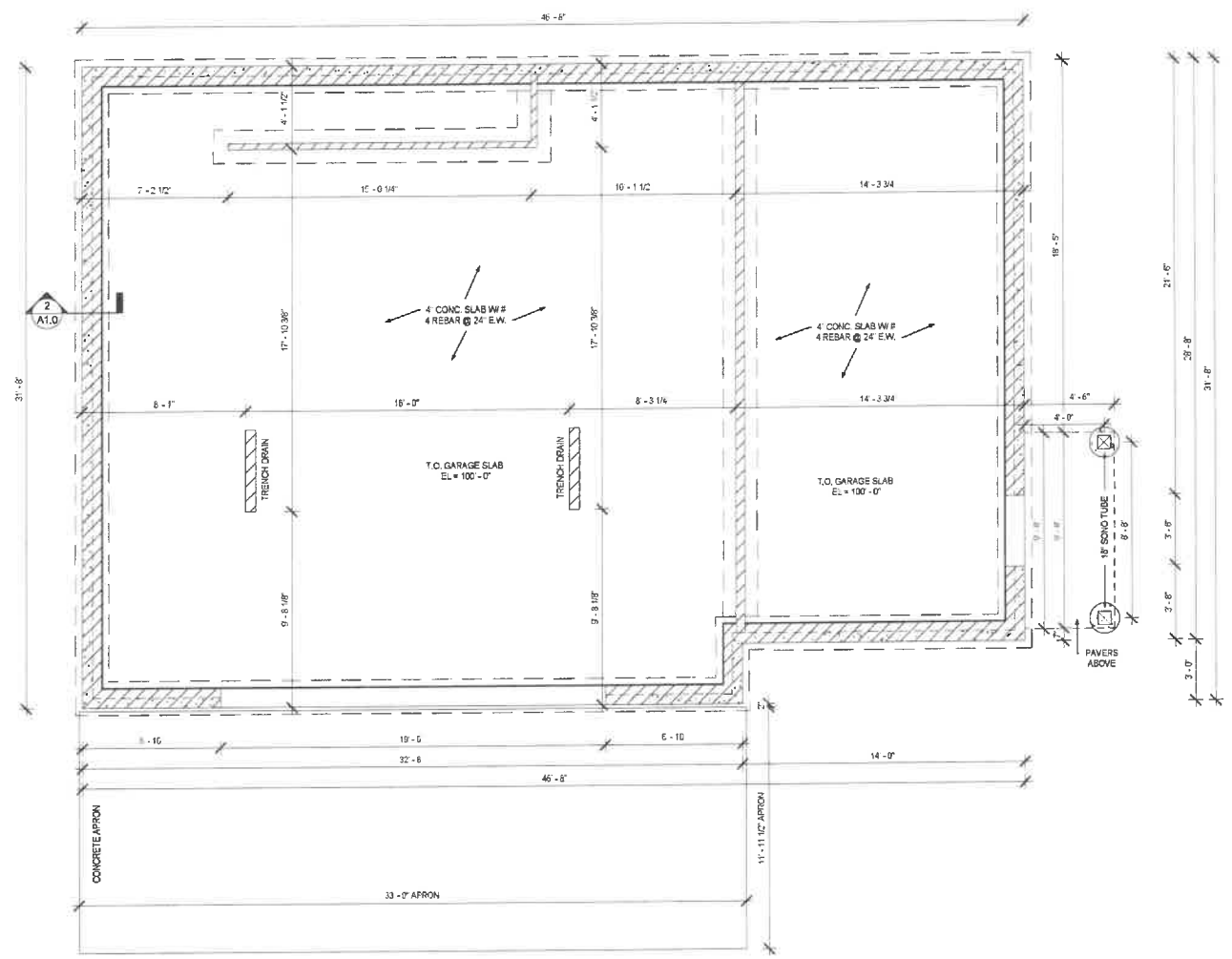
PROPERTY OF WES HANSON BUILDERS, INC.

REVISIONS

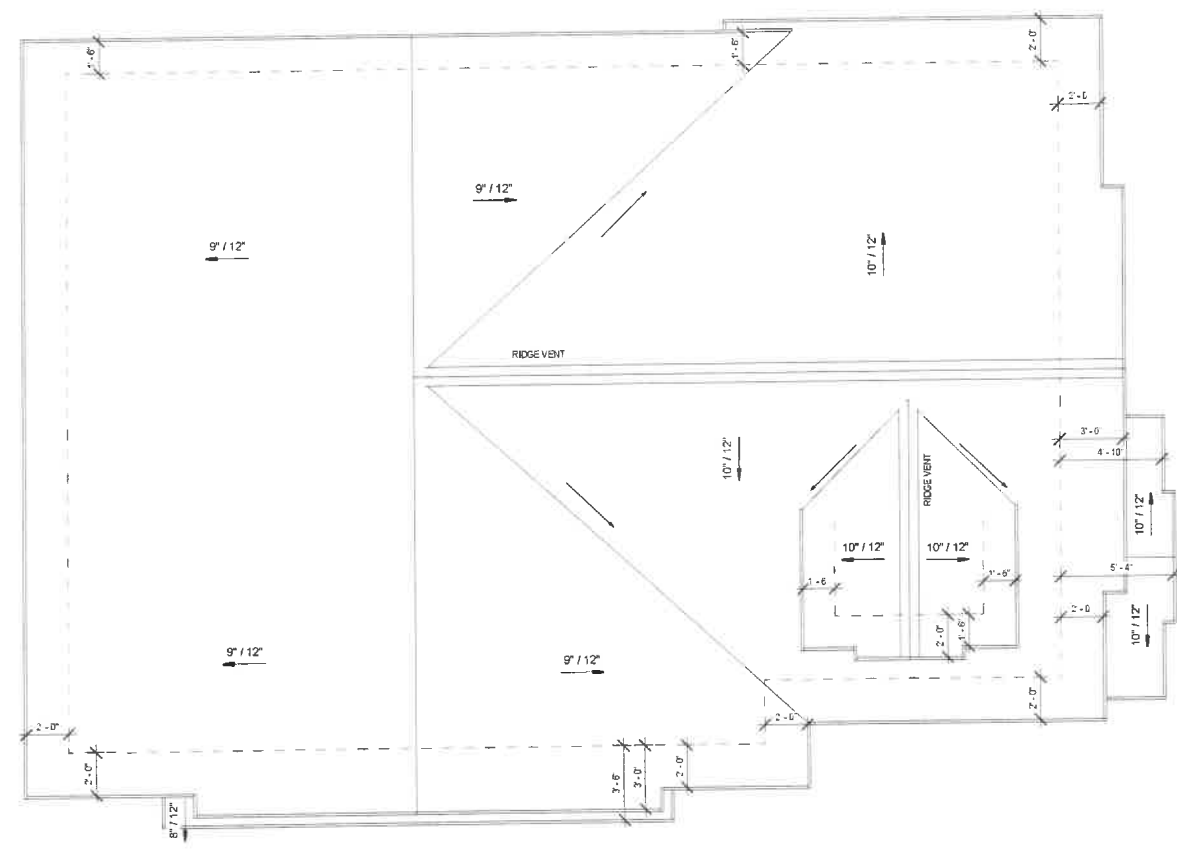
MOSBRUCKER GARAGE - REIMAGINED  
 MOSBRUCKER, BARRY + BECKY  
 11180 OLD CTY RD 39, BREEZY POINT - LAKE OSSAWINNAMAKEE  
 FOUNDATION PLAN + DETAILS + ROOF PLAN

DRAWN BY: ECO  
 CHECKED BY: MMS  
 DATE: 5.5.26

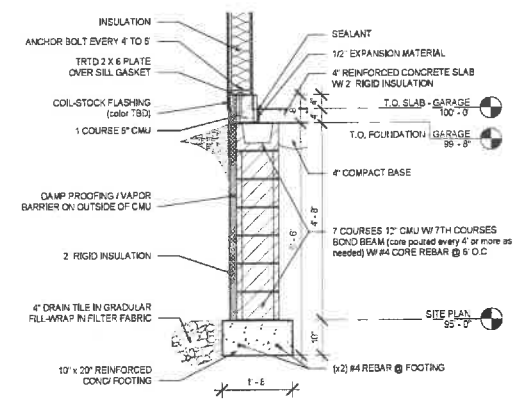
**A1.0**



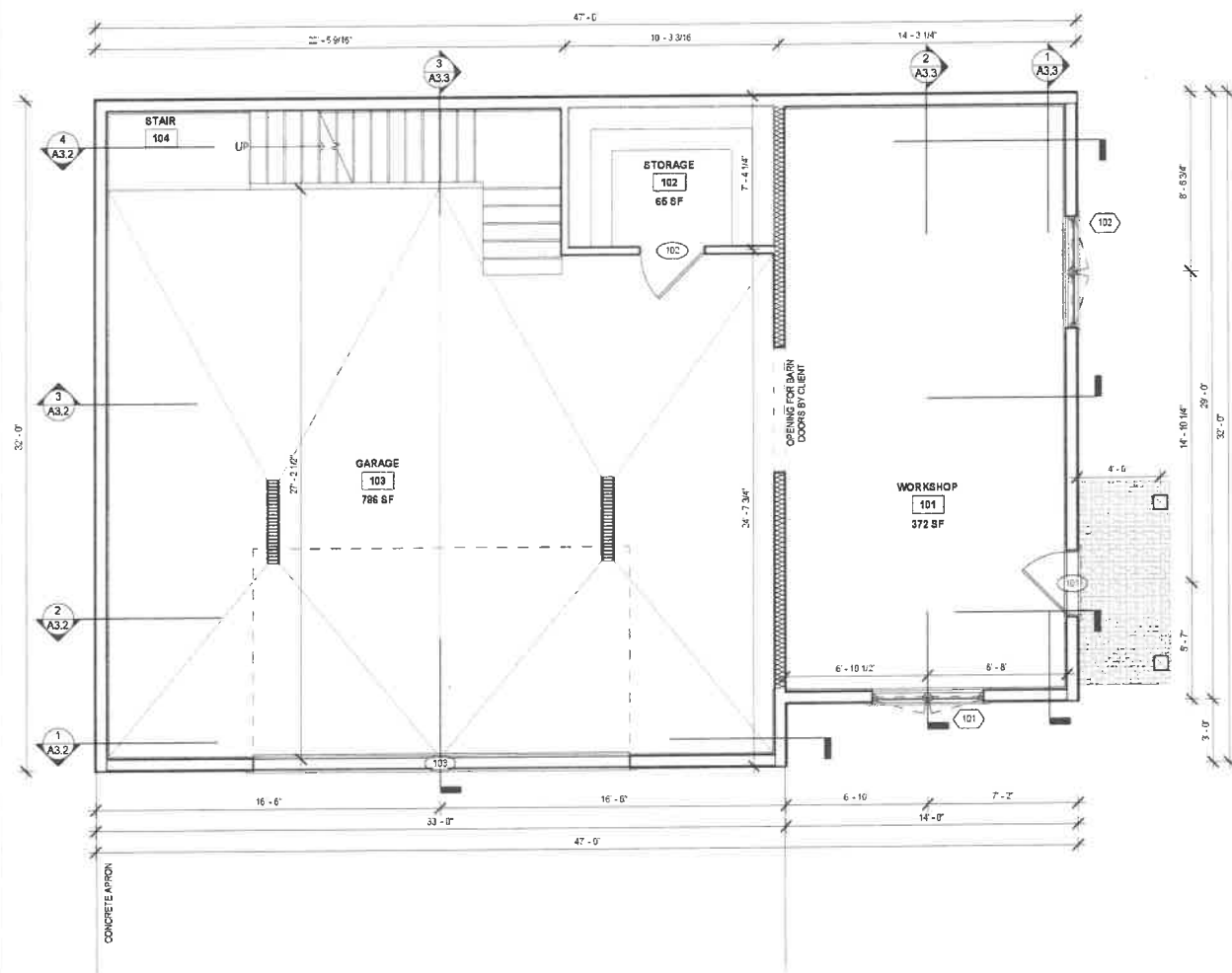
1 T.O. FOUNDATION - GARAGE  
 A1.0 1/4" = 1'-0"



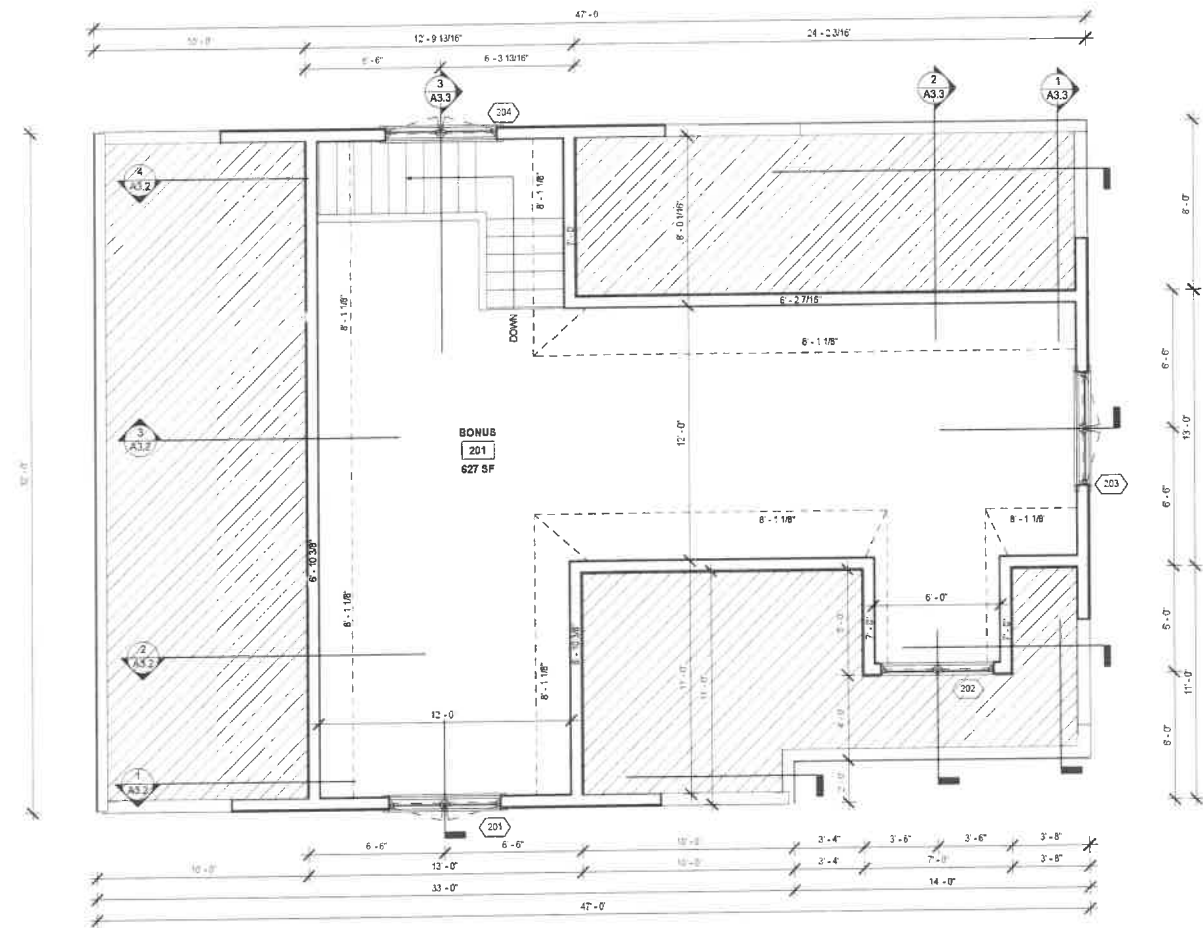
3 ROOF PLAN  
 A1.0 1/4" = 1'-0"



2 TYP WALL  
 A1.0 1/2" = 1'-0"



1 T.O. SLAB - GARAGE  
A1.2 1/4" = 1'-0"



2 UPPER LEVEL FLOOR PLAN  
A1.2 1/4" = 1'-0"

### DOOR SCHEDULE

MARK	ROOM	UNIT SIZE		DOOR TYPE	Swing	Style	THICKNESS	JAMB	HARDWARE	REMARKS
		WIDTH	HEIGHT							
101	WORKSHOP	3'-0"	8'-0"	SINGLE	LH	HALF LITE - STEEL - PAINTED	1 3/8"	6 9/16"	EMTEK - BLACK	
102	STORAGE	3'-0"	6'-8"	SINGLE	LH	6 PANEL - STEEL - PAINTED	1 3/8"	4 9/16"	EMTEK - BLACK	
103	GARAGE	18'-0"	10'-0"	OVERHEAD	-	INSULATED STEEL		6 9/16"	BLACK	

### WINDOW SCHEDULE

MARK	Location	CALL NUMBER		WINDOW TYPE	UNIT SIZE		ROUGH OPENING		JAMB	Lites Wide x Lites High	REMARKS
		CALL NUMBER	QUANTITY		WIDTH	HEIGHT	ROUGH WIDTH	ROUGH HEIGHT			
101	WORKSHOP	UCA3256	2W	CASEMENT	5'-4"	4'-7 1/8"	5'-5"	4'-7 5/8"	6 9/16"	2 x 2	
102	WORKSHOP	UCA3256	2W	CASEMENT	5'-4"	4'-7 1/8"	5'-5"	4'-7 5/8"	6 9/16"	2 x 2	
201	BONUS	UCA3256	2W	CASEMENT	5'-4"	4'-7 1/8"	5'-5"	4'-7 5/8"	6 9/16"	2 x 2	
202	BONUS	UAWN3236	2W	AWNING	5'-4"	2'-11 1/8"	5'-5"	2'-11 5/8"	6 9/16"	2 x 2	
203	BONUS	UCA3256	2W	CASEMENT	5'-4"	4'-7 1/8"	5'-5"	4'-7 5/8"	6 9/16"	2 x 2	
204	BONUS	UCA3256	2W	CASEMENT	5'-4"	4'-7 1/8"	5'-5"	4'-7 5/8"	6 9/16"	2 x 2	

### ROOM FINISH SCHEDULE

MARK	DESCRIPTION	NET AREA	FLOOR FINISH	WALL FINISH				CEILING		REMARKS
				BACK	FRONT	WORKSHOP	SIDE	FINISH	HEIGHT	
101	WORKSHOP	372 SF	CONCRETE	SHEETROCK + FIRETAPE ONLY	SHEETROCK + FIRETAPE ONLY	SHEETROCK + FIRETAPE ONLY	SHEETROCK + FIRETAPE ONLY	SHEETROCK + FIRETAPE ONLY	11'-2"	
102	STORAGE	65 SF	CONCRETE	SHEETROCK + FIRETAPE ONLY	SHEETROCK + FIRETAPE ONLY	SHEETROCK + FIRETAPE ONLY	SHEETROCK + FIRETAPE ONLY	SHEETROCK + FIRETAPE ONLY	11'-2"	
103	GARAGE	786 SF	CONCRETE	SHEETROCK + FIRETAPE ONLY	SHEETROCK + FIRETAPE ONLY	SHEETROCK + FIRETAPE ONLY	-	SHEETROCK + FIRETAPE ONLY	11'-2"	
104	STAIR	123 SF	CONCRETE	SHEETROCK + FIRETAPE ONLY	SHEETROCK + FIRETAPE ONLY	SHEETROCK + FIRETAPE ONLY	SHEETROCK + FIRETAPE ONLY	SHEETROCK + FIRETAPE ONLY	-	
201	BONUS	627 SF	UNFINISHED	SHEETROCK + FIRETAPE ONLY	SHEETROCK + FIRETAPE ONLY	SHEETROCK + FIRETAPE ONLY	SHEETROCK + FIRETAPE ONLY	SHEETROCK + FIRETAPE ONLY	8'-1 1/8"	

- CLIENT TO COMPLETE:  
 1.) LOW VOLTAGE / CAMERA LINES  
 2.) BARN DOORS  
 3.) INTERIOR TRIM  
 4.) SHELVING - STORAGE + WORKSHOP

34103 COUNTY ROAD 3  
 CROSSLAKE, MN 56442  
 PHONE (218) 692-1760  
 FAX (218) 692-1770

**WES HANSON**  
 BUILDERS INC.  
 GENERAL CONTRACTORS  
 AND PROFESSIONAL DESIGN

REVISIONS

MOSBRUCKER GARAGE - REIMAGINED  
 MOSBRUCKER, BARRY + BECKY  
 11180 OLD CTY RD 39, BREEZY POINT - LAKE OSSAWINNAMAKEE  
 MAIN + UPPER LEVEL FLOOR PLAN + SCHEDULES

DRAWN BY: ECO  
 CHECKED BY: MWS  
 DATE: 5.5.26

A1.2

24' - 9"  
17' - 9 3/4"



- T.O. PLATE - U/L 120'-7 1/8"
- T.O. WNL FRAME - U/L 118'-4"
- T.O. PLATE - POINTOOL 114'-0"
- T.O. SUBFLR - U/L 112'-0"
- T.O. PLATE - GARAGE 111'-0"
- T.O. WNL FRAME - GARAGE 108'-0"
- T.O. SLAB - GARAGE 100'-0"

1 FRONT ELEVATION  
A2.1 1/4" = 1'-0"



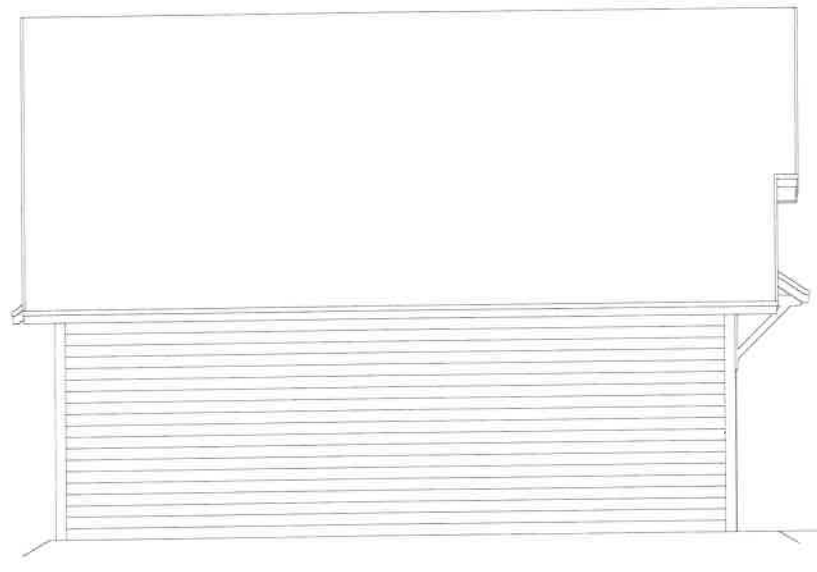
- T.O. PLATE - U/L 120'-7 1/8"
- T.O. WNL FRAME - U/L 118'-4"
- T.O. SUBFLR - U/L 112'-0"
- T.O. PLATE - GARAGE 111'-0"
- T.O. WNL FRAME - GARAGE 108'-0"
- T.O. SLAB - GARAGE 100'-0"

2 WRKSP ELEVATION  
A2.1 1/4" = 1'-0"



- T.O. PLATE - U/L 120'-7 1/8"
- T.O. WNL FRAME - U/L 118'-4"
- T.O. PLATE - POINTOOL 114'-0"
- T.O. SUBFLR - U/L 112'-0"
- T.O. PLATE - GARAGE 111'-0"
- T.O. WNL FRAME - GARAGE 108'-0"
- T.O. SLAB - GARAGE 100'-0"

3 BACK ELEVATION  
A2.1 1/4" = 1'-0"



- T.O. PLATE - U/L 120'-7 1/8"
- T.O. WNL FRAME - U/L 118'-4"
- T.O. PLATE - POINTOOL 114'-0"
- T.O. SUBFLR - U/L 112'-0"
- T.O. PLATE - GARAGE 111'-0"
- T.O. WNL FRAME - GARAGE 108'-0"
- T.O. SLAB - GARAGE 100'-0"

4 SIDE ELEVATION  
A2.1 1/4" = 1'-0"

34103 COUNTY ROAD 3  
CROSSLAKE, MN 56442  
PHONE (218) 692-1760  
FAX (218) 692-1770

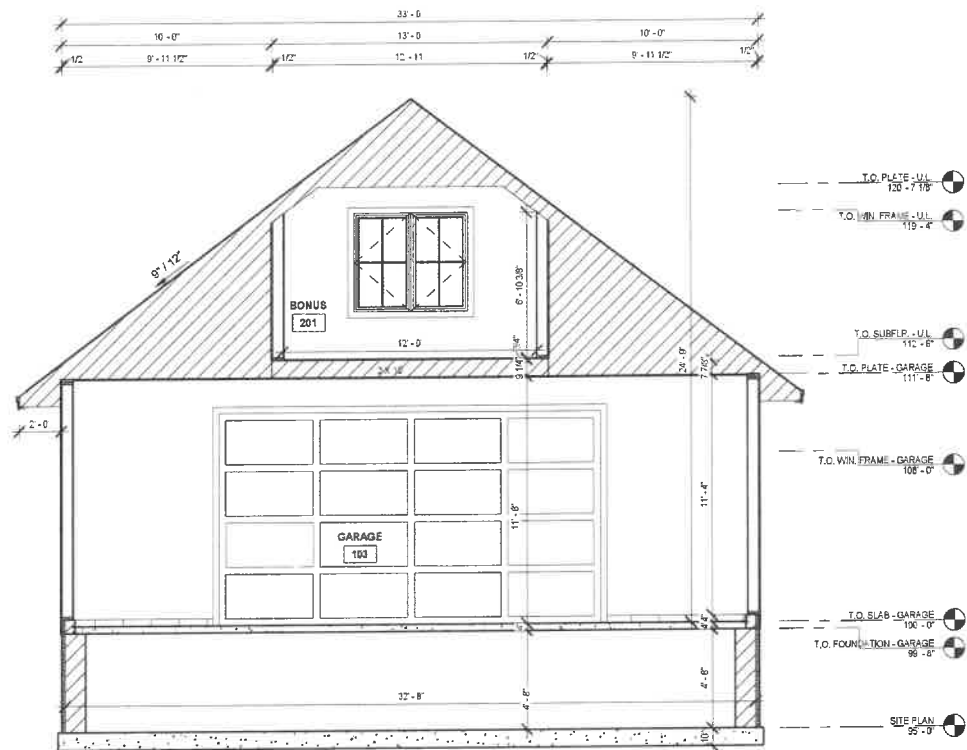
**WES HANSON**  
BUILDERS INC.  
GENERAL CONTRACTORS  
AND PROFESSIONAL DESIGN

REVISIONS

MOSBRUCKER GARAGE - REIMAGINED  
MOSBRUCKER, BARRY + BECKY  
11180 OLD CITY RD 39, BREEZY POINT - LAKE OSSAWINNAMAKEE  
EXTERIOR ELEVATION

DRAWN BY: ECO  
CHECKED BY: MWS  
DATE: 5.5.26

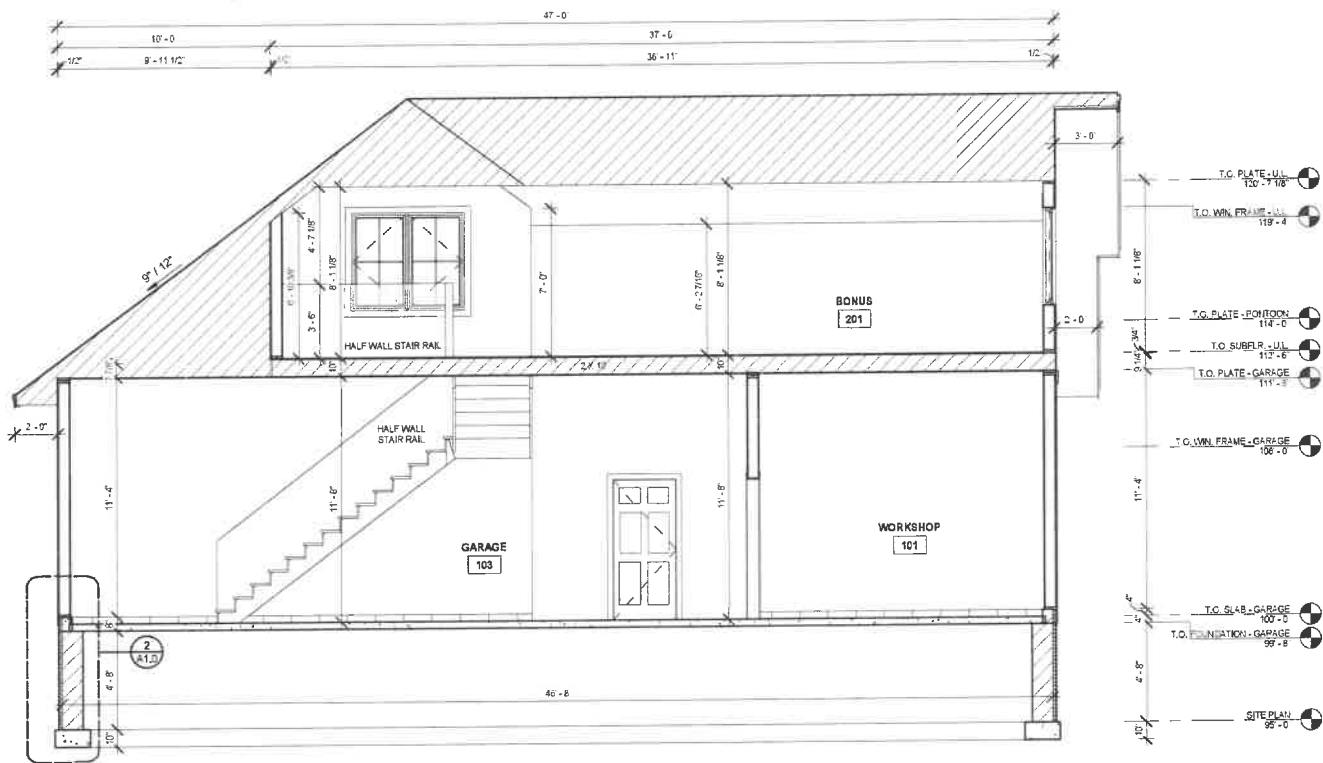
A2.1



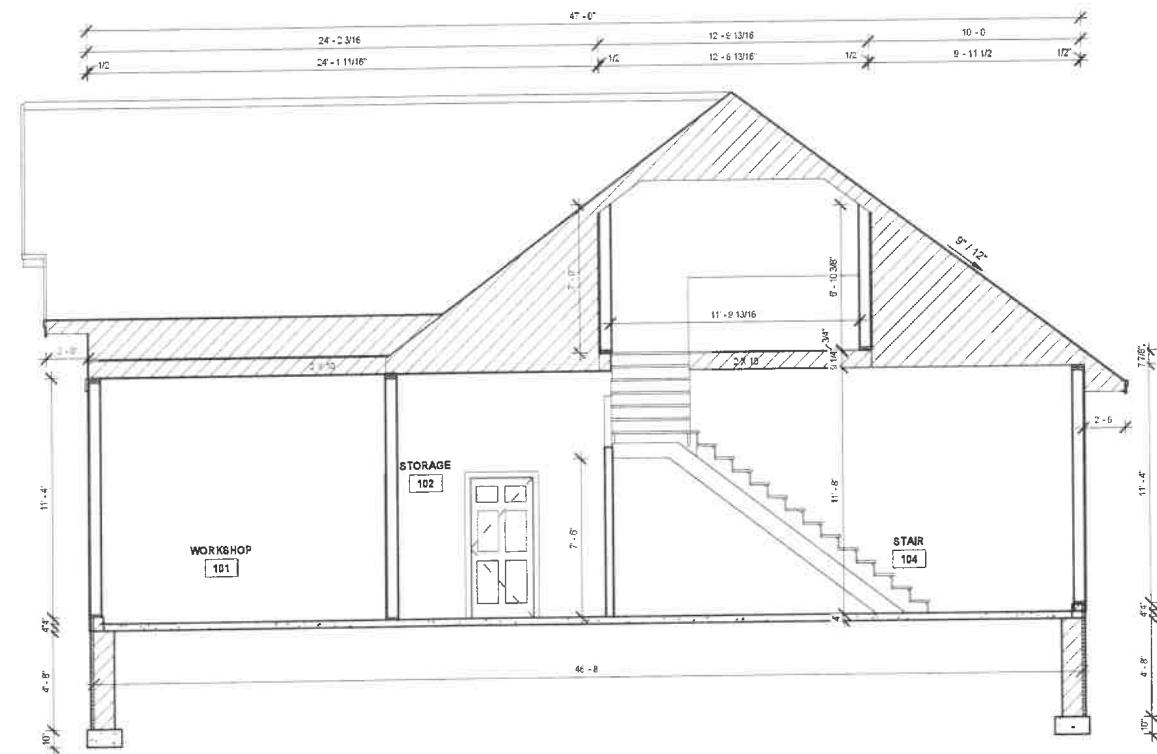
1 Garage Dr Gable  
A3.2 1/4" = 1'-0"



2 Garage Doors  
A3.2 1/4" = 1'-0"



3 Bonus  
A3.2 1/4" = 1'-0"



4 Stairs  
A3.2 1/4" = 1'-0"

34103 COUNTY ROAD 3  
CROSSLAKE, MN 56442  
PHONE (218) 692-1760  
FAX (218) 692-1770

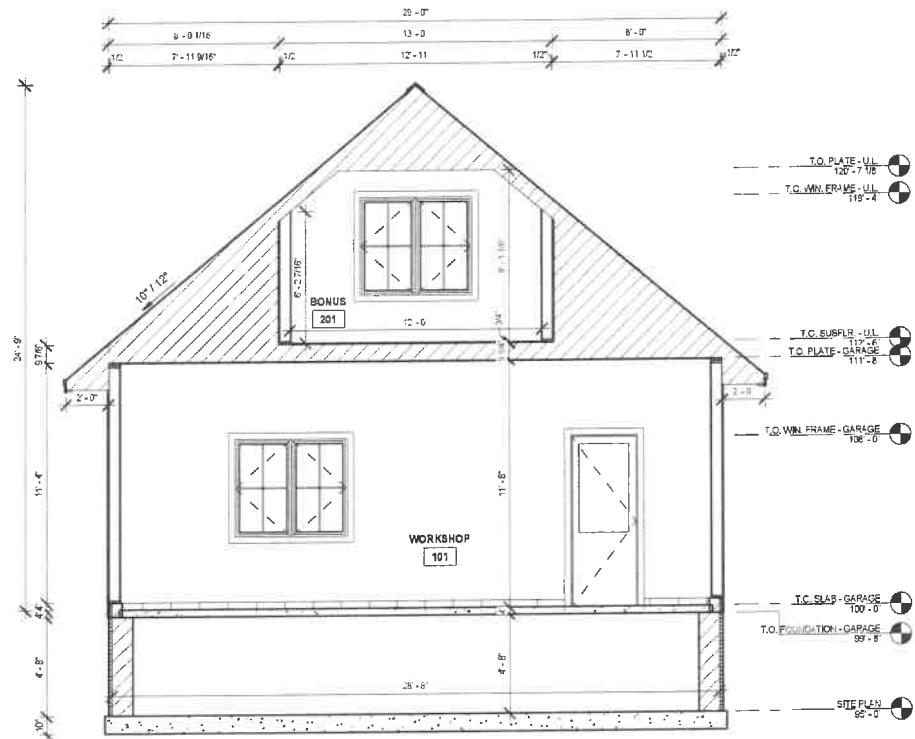
**WES HANSON**  
BUILDERS INC.  
GENERAL CONTRACTORS  
AND PROFESSIONAL DESIGN

REVISIONS

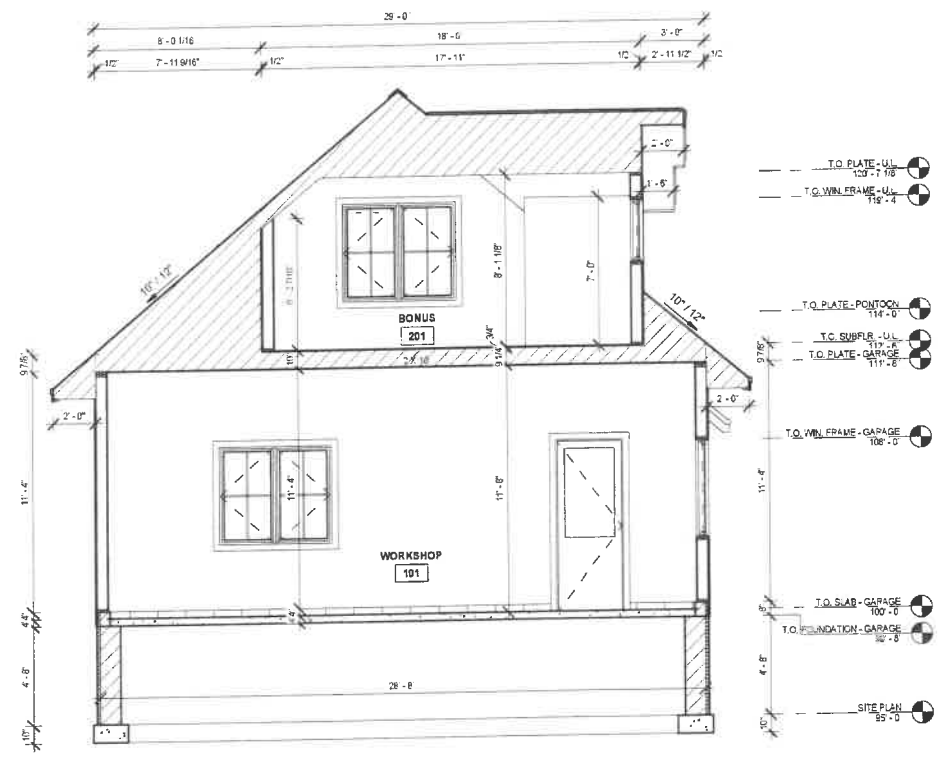
MOSBRUCKER GARAGE - REIMAGINED  
MOSBRUCKER, BARRY + BECKY  
11180 OLD CTY RD 99, BREEZY POINT - LAKE OSSAWINNAMAKEE  
BUILDING SECTIONS

DRAWN BY: ECO  
CHECKED BY: MWS  
DATE: 5.5.26

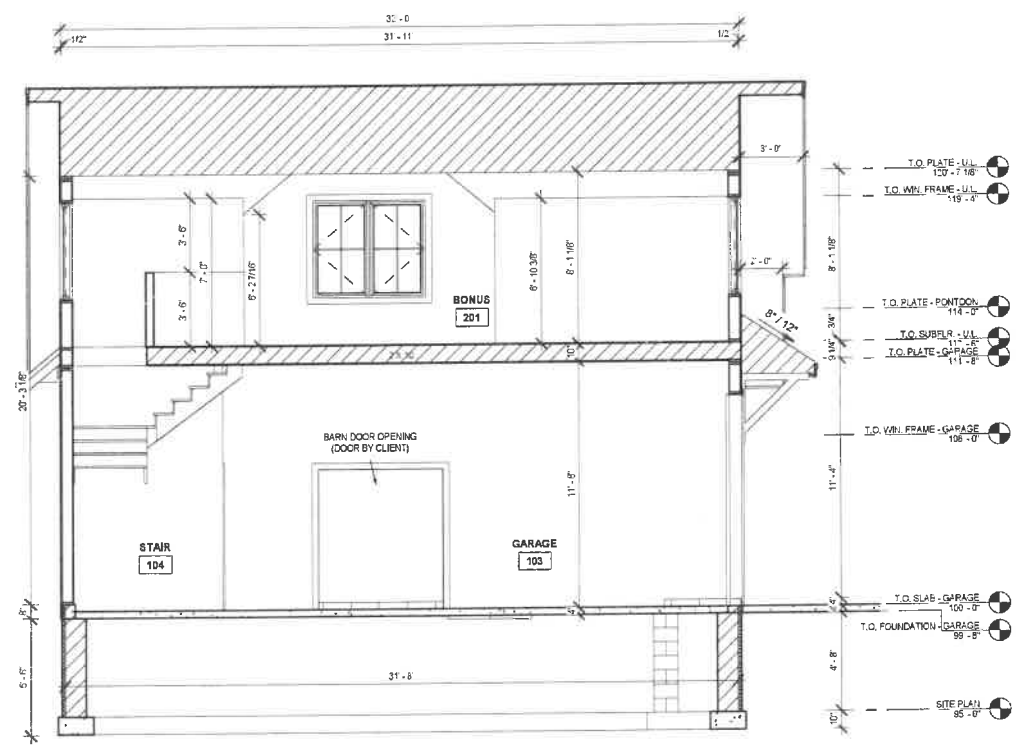
A3.2



1 Workshop Gable  
A3.3 1/4" = 1'-0"



2 Workshop End  
A3.3 1/4" = 1'-0"



3 Width - Bonus  
A3.3 1/4" = 1'-0"

34103 COUNTY ROAD 3  
CROSSLAKE, MN 56442  
PHONE (218) 692-1760  
FAX (218) 692-1770

**WES HANSON**  
BUILDERS, INC.  
GENERAL CONTRACTORS  
AND PROFESSIONAL DESIGN

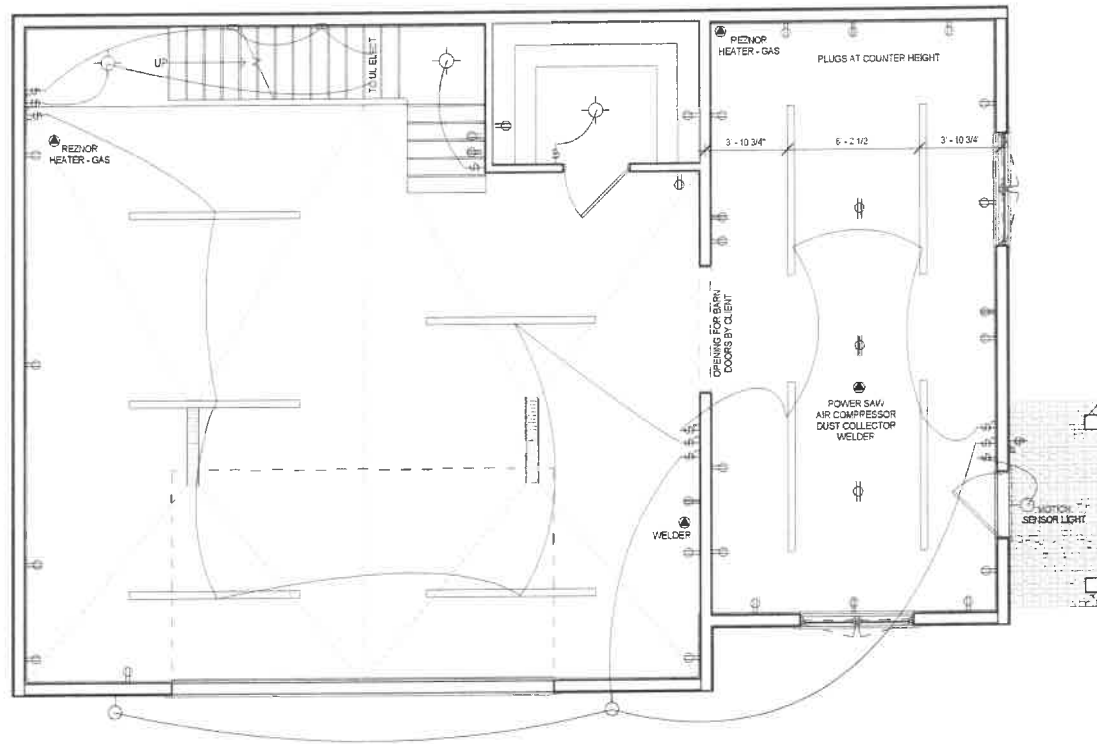
REVISIONS

MOSBRUCKER GARAGE - REIMAGINED  
MOSBRUCKER, BARRY + BECKY  
11180 OLD CTY RD 39, BREEZY POINT - LAKE OSSAWINNAMAKEE

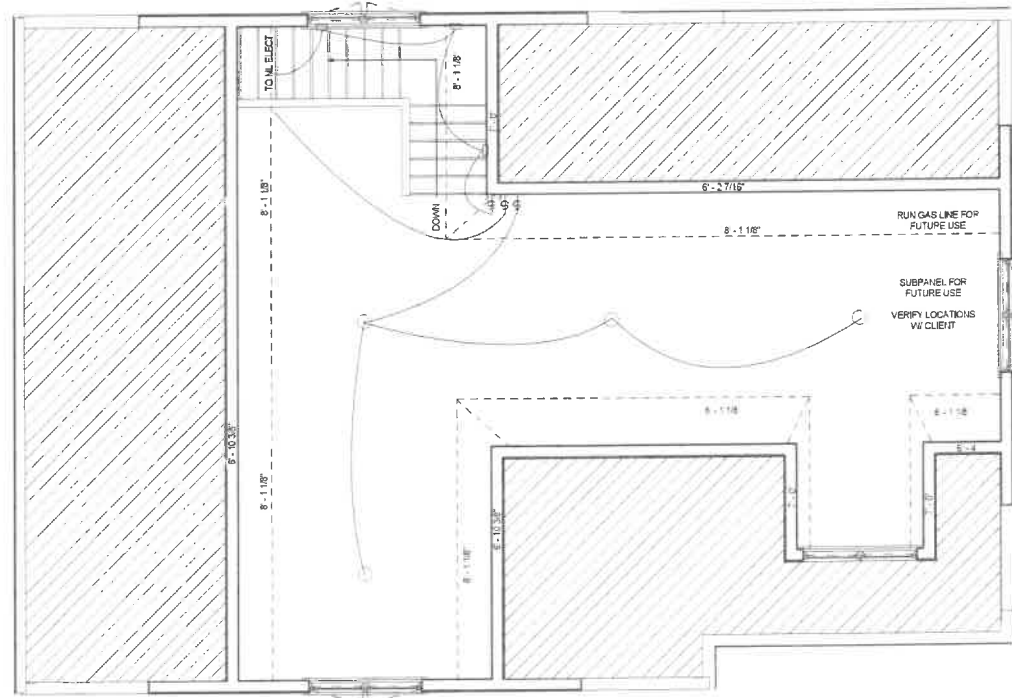
BUILDING SECTIONS

DRAWN BY: ECO  
CHECKED BY: MWVS  
DATE: 5.5.26

A3.3



1 T.O. SLAB - GARAGE ELECTRICAL PLAN  
E1.1 1/4" = 1'-0"



2 UPPER LEVEL ELECTRICAL PLAN  
E1.1 1/4" = 1'-0"

**PLUMBING:**

- 1.) SINKS  
- NA
- 2.) HOSE BIB  
- NA
- 3.) WATER HEATER  
- NA
- 4.) SEPTIC SYSTEM  
- NA

**HVAC:**

- 1.) HANGING UNIT HEAT (GARAGE + WORKSHOP)  
- MANUAL STAT. - (OPTION)
- 2.) GAS LINE TO UL (FOR FUTURE USE)
- 3.) GAS - NATURAL

**SPECIAL EQUIPMENT:**

- 1.) POWER SAW
- 2.) WELDER
- 3.) AIR COMPRESSOR
- 4.) DUST COLLECTOR
- 5.) SUB PANEL IN UL FOR FUTURE USE

**ELECTRICAL:**

- 1.) SEE PLAN FOR LIGHTING / SWITCH LOCATION
- 2.) FIXTURES  
- DECORATIVE = VARIES - BY OWNER.  
SUBCONTRACTOR TO PROVIDE ROOM BY ROOM  
SELECTION LIST FOR CLIENT TO SHOP FROM  
- DEVICES - TOGGLE  
- DIMMERS - PER ELECT. PLAN OR JOB-SITE WALK-THRU  
INSTALL AT FINAL TRIM OUT PHASE
- 3.) TRENCHING  
- ELECT. TO DO A SITE TO DETERMINE TO THE BEST OF THEIR  
AVAILABLE KNOWLEDGE ANY TRENCHING COSTS

SYMBOLS LEGEND	
	110 OUTLET
	110 PLUG MOLD
	220 OUTLET
	GROUND FAULT INTERRUPT
	WEATHER PROOF OUTLET
	SPECIAL OUTLET
	110 CEILING OUTLET
	220 CEILING OUTLET
	SINGLE SWITCH
	3-WAY SWITCH
	4-WAY SWITCH
	CEILING FAN CONTROL
	SINGLE DIMMER
	3-WAY DIMMER
	TIMER SWITCH
	SYSTEM KEYPAD
	EXHAUST FAN
	SMOKE DETECTOR
	CARBON MONOXIDE DETECTOR
	HEAT DETECTOR
	PUCK LIGHT
	LED
	RECESSED LIGHT FIXTURE
	RECESSED EYEBALL LIGHT FIXTURE
	RECESSED AIR TIGHT LT. FIXTURE
	RECESSED MOIST RESIST. LT. FIXTURE
	SURFACE MOUNT CEILING LIGHT FIXTURE
	WALL MOUNT LIGHT FIXTURE
	EXTERIOR FLOOD LIGHT
	PORCELAIN LIGHT
	RECESSED WALL LIGHT
	DOOR BELL / GARAGE DOOR BUTTON
	UNIT HEATER

Electrical Legend  
1/4" = 1'-0"

PROPERTY OF WES HANSON BUILDERS, INC.

34103 COUNTY ROAD 3  
CROSSLAKE, MN 56442  
PHONE (218) 692-1760  
FAX (218) 692-1770

**WES HANSON** Inc.  
BUILDERS Inc.  
GENERAL CONTRACTORS  
AND PROFESSIONAL DESIGN

REVISIONS

MOSBRUCKER GARAGE - REIMAGINED  
MOSBRUCKER, BARRY + BECKY  
11180 OLD CTY RD 39, BREEZY POINT - LAKE OSSAWINNAMAKEE  
MAIN + UPPER LEVEL ELECTRICAL PLAN

DRAWN BY: ECO  
CHECKED BY: MWS  
DATE: 5.5.26

E1.1