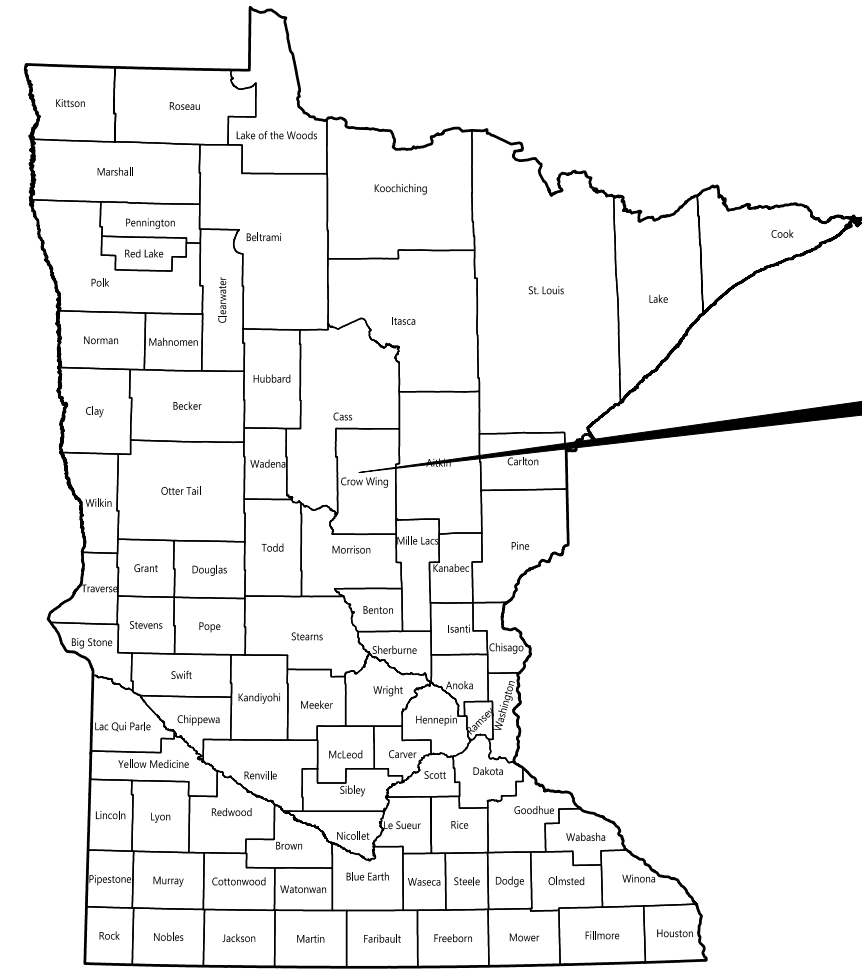


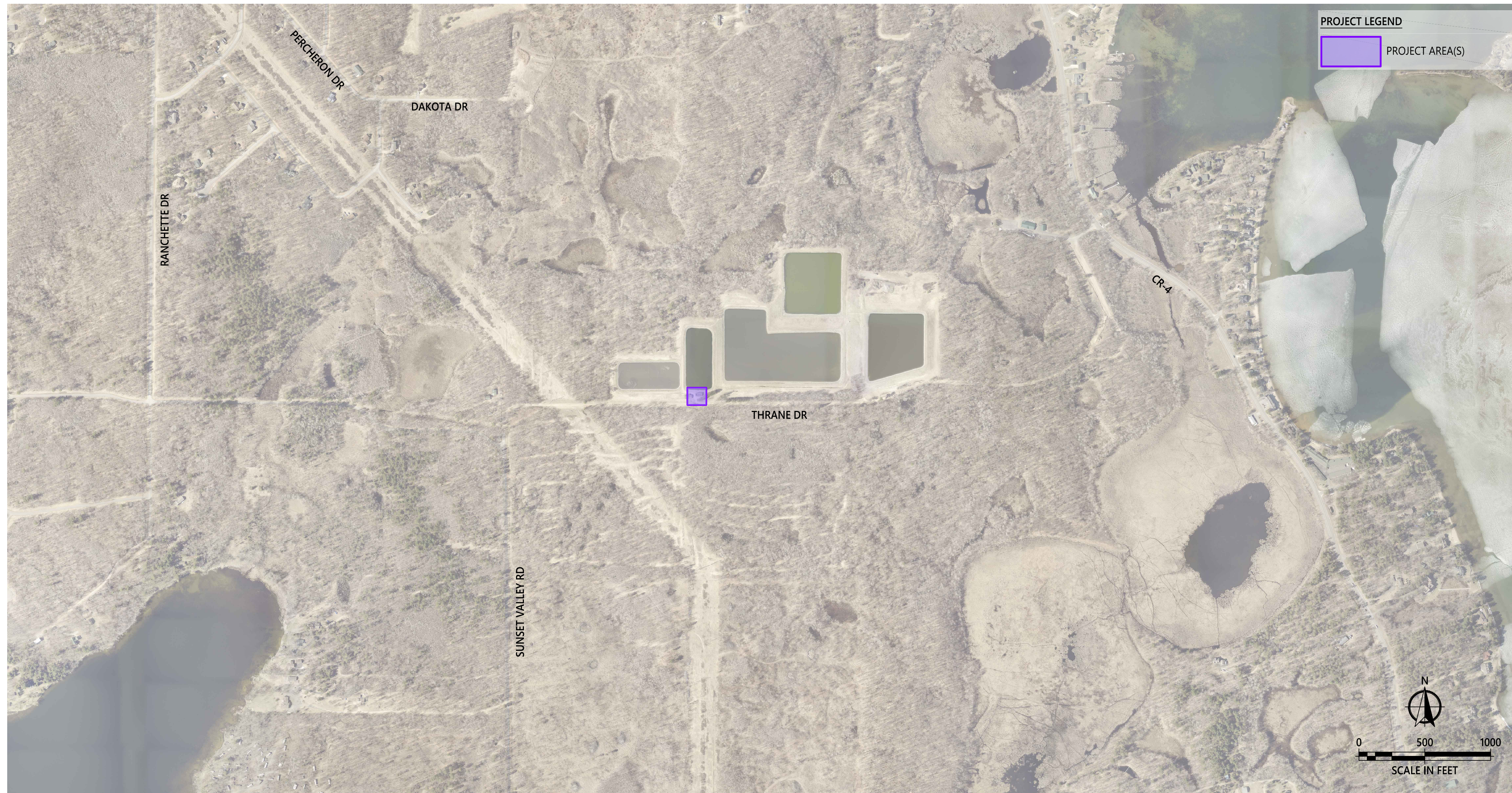
SANITARY SEWER METERING IMPROVEMENTS

BREEZY POINT, MN
MAY, 2026



PROJECT LOCATION
BREEZY POINT WASTEWATER TREATMENT FACILITY

GOVERNING SPECIFICATIONS
THE 2025 EDITION OF THE MINNESOTA DEPARTMENT OF TRANSPORTATION "STANDARD SPECIFICATIONS FOR CONSTRUCTION" AND THE 2023 SCHEDULE OF "MATERIALS CONTROL FOR 2020 STANDARD SPECIFICATIONS" SHALL GOVERN.



PROJECT LEGEND
PROJECT AREA(S)

CITY OFFICIALS
MAYOR: Todd Roggenkamp
CITY COUNCIL: Steve Jensen, Michael Moroni, Rebecca Ball, Brad Scott
CITY ADMINISTRATOR: Allie Polsfuss
PUBLIC WORKS SUPERVISOR: Joe Zierden

APPROVALS
RECOMMENDED FOR APPROVAL: _____
CITY CONSULTING ENGINEER DATE

SHEET INDEX TABLE

SHEET No.	SHEET TITLE
C1.01	TITLE SHEET
C1.02	LEGEND
C2.01 - C2.03	DETAILS
C3.01	EXISTING CONDITIONS & REMOVALS
C4.01	SITE PLAN
C5.01	RESORATION PLAN
E1.0	ELECTRICAL SITE PLAN

THIS PLAN CONTAINS 9 SHEETS

MAP SOURCE & YEAR: [YEAR] [MAP SOURCE]
MAP DESCRIPTION: [DESCRIPTION OF MAP, I.E. PARTIAL MAP OF BAXTER, CROW WING COUNTY, MINNESOTA]

THIS PLAN SET CONTAINS COLOR GRAPHICS. BLACK AND WHITE PRINTS ARE NOT OFFICIAL SIGNED DOCUMENTS.



DRAWN BY: NCP
CHECKED BY: *Nick Peterson*
NICK PETERSON
LIC. NO.: 64909 DATE: 05-18-2026

DATE	REV#	REVISIONS DESCRIPTION

SANITARY SEWER METERING IMPROVEMENTS
TITLE SHEET

C1.01
PROJECT #: 2025-10153

© 2026 WIDSETH ARCHITECTS, FILE: W:\PROJECTS\CITY OF BREEZY POINT-32265\2026-10153\04 DESIGN\CIVIL\CADD\C-15-2026-10153.DWG PLOTTED BY: NICK PETERSON, MAY 18, 2026

SURVEY MONUMENTS - FOUND

- FOUND CAST IRON MONUMENT
- ▲ FOUND CONTROL POINT
- FOUND IRON PIPE
- FOUND JUDICIAL LAND MONUMENT
- ✕ FOUND LATH

SURVEY MONUMENTS - STAKED

- ⊕ BENCHMARK
- ⊙ STAKED CAST IRON MONUMENT
- △ STAKED CONTROL POINT
- STAKED IRON PIPE
- ⊙ STAKED JUDICIAL LAND MONUMENT

PROPERTY LINEWORK

- SECTION LINE
- QUARTER SECTION LINE
- QUARTER QUARTER SECTION LINE
- RIGHT-OF-WAY LINE
- EASEMENT LINE
- DESCRIPTION LINE
- DEEDED LOT LINE
- PLATTED LOT LINE
- BOUNDARY LINE
- SUBDIVISION LINE
- SETBACK LINE

TOPOGRAPHIC INFORMATION - EXISTING

- 1230 MAJOR CONTOURS
- 1234 MINOR CONTOURS
- + 1234.56 SPOT ELEVATION

TOPOGRAPHIC INFORMATION - PROPOSED

- 1230 MAJOR CONTOURS (WITH LABEL)
- 1234 MINOR CONTOURS (WITH LABEL)
- 1234.56 SPOT ELEVATION
- +/-1.23% SLOPE - PERCENT
- 1:2 SLOPE - RISE : RUN
- TBC: 1234.56 SPOT ELEVATIONS @ CURB
FLW: 1234.06 (TBC: TOP BACK CURB / FLW: CURB FLOWLINE)
- +1.23, +3.21 SPOT ELEVATIONS, CUT/FILL
(GREEN: FILL DEPTH / RED: CUT DEPTH)

VEGETATION SYMBOLS - EXISTING

- SHRUB
- ⌘ STUMP
- TREE - CONIFEROUS
- TREE - DECIDUOUS
- WETLAND

VEGETATION LINEWORK - EXISTING

- EDGE OF WOODS
- EDGE OF WETLANDS

VEGETATION SYMBOLS - PROPOSED

- SHRUB
- TREE - CONIFER
- TREE - DECIDUOUS

VEGETATION LINEWORK - PROPOSED

- EDGE OF WOODS

ROADWAY/PAVEMENT LINEWORK - EXISTING

- BITUMINOUS SURFACE
- CONCRETE SURFACE
- CURB & GUTTER
- GRAVEL SURFACE
- ROADWAY/DRIVE/TRAIL CENTERLINE

ROADWAY/PAVEMENT LINEWORK - PROPOSED

- BITUMINOUS SURFACE
- CONCRETE SURFACE
- CURB & GUTTER
- GRAVEL SURFACE
- ROADWAY/DRIVE/TRAIL CENTERLINE

SITE SYMBOLS - EXISTING

- FENCE POST
- ▲ FLAG POLE
- GUARD POST (BOLLARD)
- GUY POLE
- GUY WIRE ANCHOR
- ♻️ ACCESSIBLE PARKING MARKING
- ✕ MAILBOX
- SIGN - DOUBLE POST
- SIGN - SINGLE
- SIGN - FIRE #

SITE LINEWORK - EXISTING

- BUILDING
- BARB WIRE FENCE
- CHAINLINK FENCE
- WOOD FENCE
- RAILROAD
- RETAINING WALL

SITE SYMBOLS - PROPOSED

- FENCE POST
- ▲ FLAG POLE
- GUARD POST (BOLLARD)
- GUY POLE
- GUY WIRE ANCHOR
- ✕ MAILBOX
- SIGN - DOUBLE POST
- SIGN - FIRE #
- SIGN - SINGLE

SITE LINEWORK - PROPOSED

- BUILDING
- FENCE - BARB WIRE
- FENCE - CHAINLINK
- FENCE - WOOD
- RETAINING WALL

COMMUNICATION/TELECOM UTILITY SYMBOLS - EXISTING

- Ⓜ TELECOM HANDHOLE
- Ⓜ TELECOM MANHOLE
- Ⓜ TELECOM PEDESTAL
- Ⓜ TELECOM POLE
- Ⓜ TV HANDHOLE
- Ⓜ TV PEDESTAL
- Ⓜ SATELLITE DISH

COMMUNICATION/TELECOM UTILITY LINEWORK - EXISTING

- FOC UNDERGROUND FIBER OPTIC LINE
- OHT OVERHEAD TELEPHONE LINE
- UGT UNDERGROUND TELEPHONE LINE
- OHC OVERHEAD TV LINE
- UGC UNDERGROUND TV LINE

COMMUNICATION/TELECOM UTILITY SYMBOLS - PROPOSED

- Ⓜ TELECOM HANDHOLE
- Ⓜ TELECOM MANHOLE
- Ⓜ TELECOM PEDESTAL
- Ⓜ TELECOM POLE
- Ⓜ TV HANDHOLE
- Ⓜ TV PEDESTAL
- Ⓜ SATELLITE DISH

COMMUNICATION/TELECOM UTILITY LINEWORK - PROPOSED

- FOC UNDERGROUND FIBER OPTIC LINE
- UGT UNDERGROUND TELEPHONE LINE
- OHC OVERHEAD TV LINE
- UGC UNDERGROUND TV LINE

ELECTRICAL UTILITY SYMBOLS - EXISTING

- Ⓜ AC UNIT
- Ⓜ GENERATOR
- Ⓜ GROUND LIGHT (FLOODLIGHT)
- Ⓜ ELECTRIC HANDHOLE
- Ⓜ LIGHT POLE
- Ⓜ ELECTRIC MANHOLE
- Ⓜ ELECTRIC METER
- Ⓜ ELECTRIC PEDESTAL
- Ⓜ ELECTRIC POLE
- Ⓜ TRAFFIC SIGNAL
- Ⓜ TRANSFORMER
- Ⓜ YARD LIGHT

ELECTRICAL UTILITY LINEWORK - EXISTING

- OHE OVERHEAD ELECTRIC LINE
- UGE UNDERGROUND ELECTRIC LINE

ELECTRICAL UTILITY SYMBOLS - PROPOSED

- Ⓜ AC UNIT
- Ⓜ GENERATOR
- Ⓜ GROUND LIGHT (FLOODLIGHT)
- Ⓜ ELECTRIC HANDHOLE
- Ⓜ LIGHT POLE
- Ⓜ ELECTRIC MANHOLE
- Ⓜ ELECTRIC METER
- Ⓜ ELECTRIC PEDESTAL
- Ⓜ ELECTRIC POLE
- Ⓜ TRAFFIC SIGNAL
- Ⓜ TRANSFORMER
- Ⓜ YARD LIGHT

ELECTRICAL UTILITY LINEWORK - PROPOSED

- OHE OVERHEAD ELECTRIC LINE
- UGE UNDERGROUND ELECTRIC LINE

NATURAL GAS UTILITY SYMBOLS - EXISTING

- Ⓜ NATURAL GAS METER
- Ⓜ NATURAL GAS VALVE
- PROPANE TANK

NATURAL GAS UTILITY LINEWORK - EXISTING

- GAS NATURAL GAS LINE

NATURAL GAS UTILITY SYMBOLS - PROPOSED

- Ⓜ NATURAL GAS METER
- Ⓜ NATURAL GAS VALVE
- PROPANE TANK

NATURAL GAS UTILITY LINEWORK - PROPOSED

- GAS NATURAL GAS LINE

SANITARY SEWER SYMBOLS - EXISTING

- Ⓜ SANITARY AIR RELEASE MANHOLE
- Ⓜ SANITARY CLEANOUT
- Ⓜ LIFT STATION WET WELL
- Ⓜ LIFT STATION VALVE VAULT
- Ⓜ SANITARY MANHOLE
- Ⓜ SANITARY VALVE (FORCEMAIN)

SANITARY SEWER LINEWORK - EXISTING

- FM SANITARY FORCE MAIN
- SANITARY GRAVITY MAIN
- SS SANITARY SERVICE LINE

SANITARY SEWER SYMBOLS - PROPOSED

- Ⓜ SANITARY AIR RELEASE MANHOLE
- Ⓜ SANITARY CLEANOUT
- Ⓜ LIFT STATION WET WELL
- Ⓜ LIFT STATION VALVE VAULT
- Ⓜ SANITARY MANHOLE
- Ⓜ SANITARY VALVE (FORCEMAIN)

SANITARY SEWER LINEWORK - PROPOSED

- FM SANITARY FORCE MAIN
- SANITARY GRAVITY MAIN
- SS SANITARY SERVICE LINE

STORM SEWER SYMBOLS - EXISTING

- STORM SEWER CATCH BASIN
- Ⓜ STORM SEWER CLEANOUT
- Ⓜ CULVERT APRON
- Ⓜ STORM SEWER INLET STRUCTURE
- Ⓜ STORM SEWER MANHOLE

STORM SEWER LINEWORK - EXISTING

- STORM SEWER GRAVITY MAIN
- STORM SEWER DRAINTILE

STORM SEWER SYMBOLS - PROPOSED

- Ⓜ STORM SEWER CATCH BASIN
- Ⓜ STORM SEWER CLEANOUT
- Ⓜ STORM SEWER INLET STRUCTURE
- Ⓜ STORM SEWER MANHOLE

STORM SEWER LINEWORK - PROPOSED

- STORM SEWER GRAVITY MAIN
- STORM SEWER DRAINTILE

WATER SYMBOLS - EXISTING

- Ⓜ CURB STOP
- Ⓜ WATER HANDHOLE
- Ⓜ FIRE HYDRANT
- Ⓜ YARD HYDRANT
- Ⓜ WATER MANHOLE
- Ⓜ WATER METER
- Ⓜ WATER MAIN VALVE
- Ⓜ WATER WELL

WATER LINEWORK - EXISTING

- WATER MAIN LINE
- WATER SERVICE LINE

WATER SYMBOLS - PROPOSED

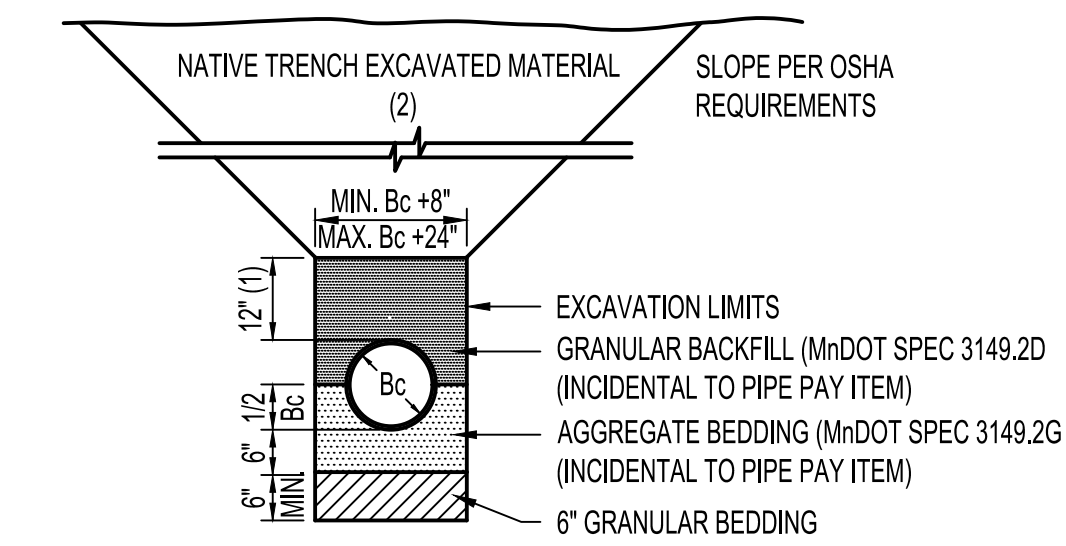
- Ⓜ CURB STOP
- Ⓜ HANDHOLE
- Ⓜ HYDRANT
- Ⓜ YARD HYDRANT
- Ⓜ MANHOLE
- Ⓜ WATER METER
- Ⓜ WATER MAIN VALVE
- Ⓜ WATER WELL

WATER LINEWORK - PROPOSED

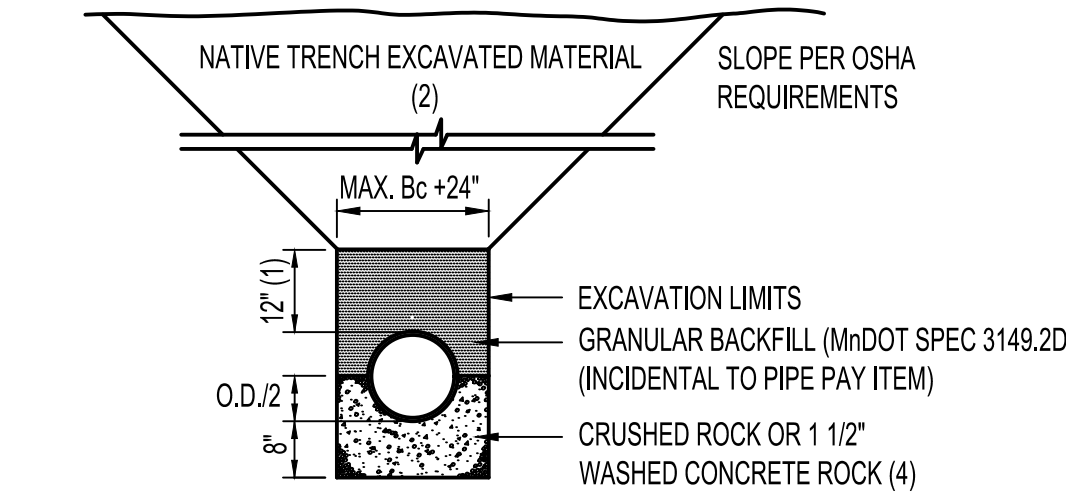
- WATER MAIN PIPE
- WATER SERVICE PIPE

© 2026 WIDSETH. FILE: W:\PROJECTS\CITY OF BREEZY POINT-32265\2026-10153\04 DESIGN\CIVIL\CADD\C-1-G-2026-10153.DWG - PLOTTED BY: NICK PETERSON, May 18, 2026

DATE	REV#	REVISIONS DESCRIPTION



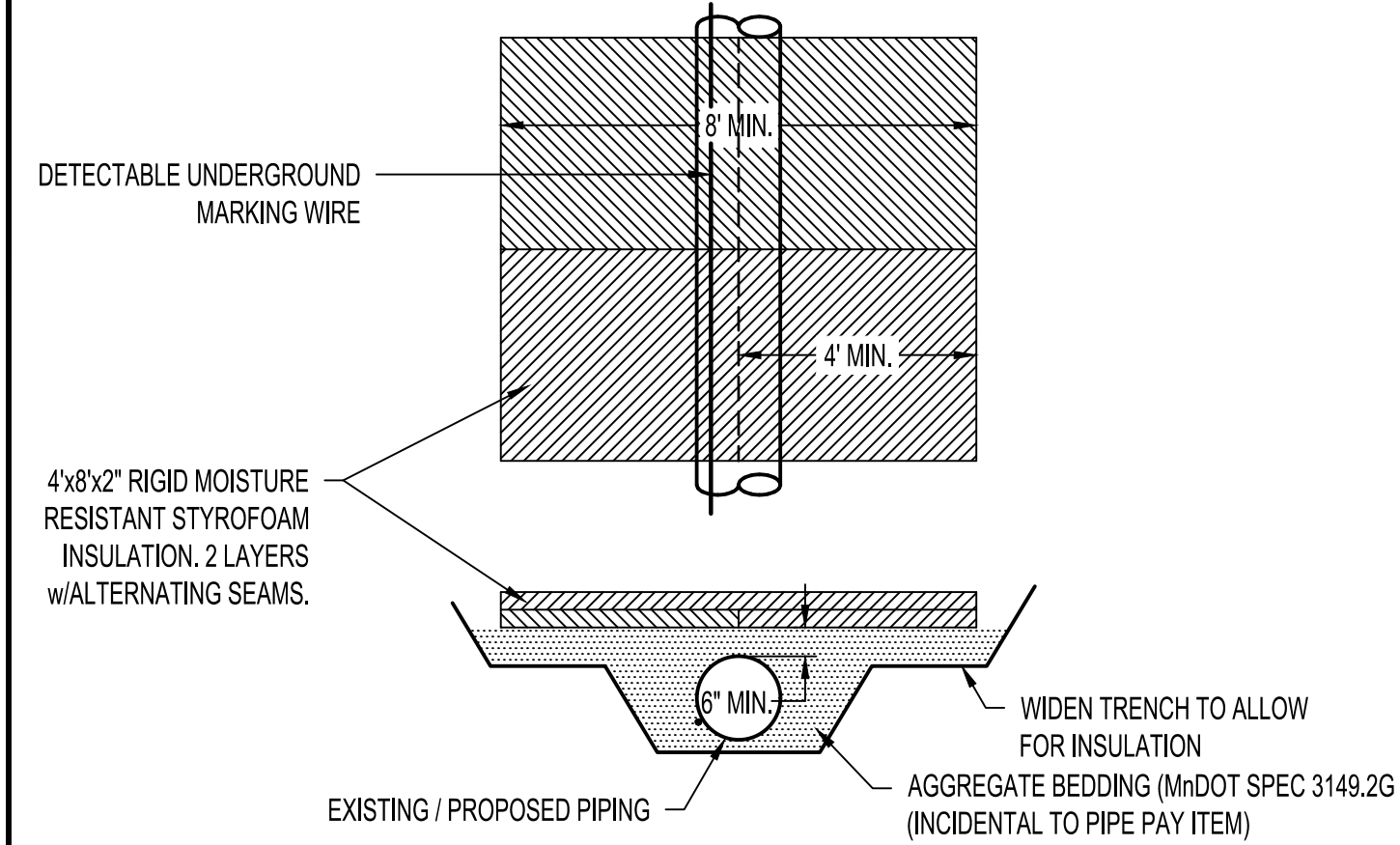
TYPICAL SEWER PIPE BEDDING DETAIL



SPECIAL PIPE BEDDING DETAIL FOR TRENCH STABILIZATION WHERE REQUIRED

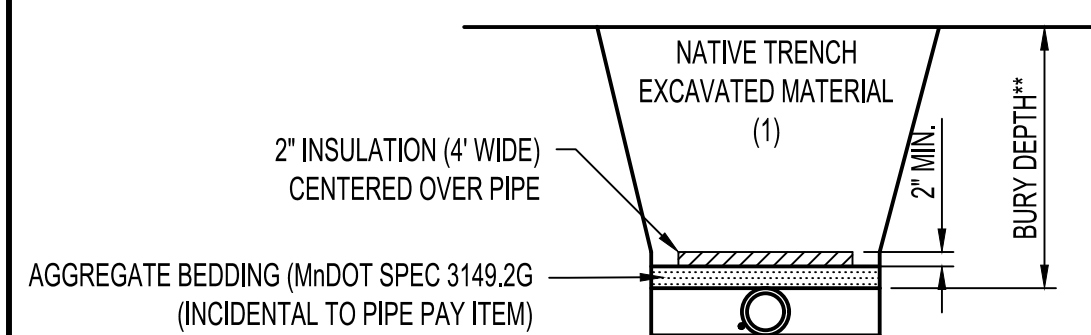
NOTES:

- (1) IF THIS DIMENSION DECREASES THE BEDDING CONDITIONS WILL CHANGE. A HIGHER LEVEL BEDDING CONDITION SHALL BE SOLELY AT THE CONTRACTORS EXPENSE.
- (2) IN AREAS WHERE EXISTING MATERIAL IS NOT SUITABLE AS BACKFILL, THE ENGINEER MAY DIRECT THE PLACEMENT OF GRANULAR BACKFILL. GRANULAR BACKFILL WILL BE PAID AND MEASURED AS GRANULAR BACKFILL (LV). DISPOSAL OF EXCESS EXCAVATED MATERIAL SHALL BE CONSIDERED INCIDENTAL TO GRANULAR BACKFILL (LV).
- (3) FOR ROCK OR OTHER INCOMPRESSIBLE MATERIALS, THE TRENCH SHOULD BE OVER EXCAVATED A MINIMUM OF 6" & REFILLED WITH GRANULAR MATERIAL. THIS ITEM WILL BE ELIGIBLE FOR EXTRA PAYMENT, IF REQUIRED.
- (4) THIS PROCEDURE IS NOT INTENDED TO REPLACE DEWATERING SYSTEMS IN WET CONDITIONS.
- (5) IF CRUSHED OR WASHED ROCK BEDDING IS USED, INSTALL A 10' LONG SAND SECTION AROUND ENTIRE PIPE SECTION APPROXIMATELY HALFWAY BETWEEN EACH MANHOLE RUN. THE INTENT OF THE SAND IS TO ACT AS A COLLAR TO PREVENT WATER FROM TRAVELING PIPE RUN.



SHALLOW PIPING INSULATION DETAIL

PIPES WITH LESS THAN 4' COVER UNDER GREEN SPACE OR PIPES WITH LESS THAN 6' UNDER HARD SURFACE



MEDIUM DEPTH PIPING INSULATION DETAIL

**PIPES WITH MORE THAN 4' COVER BUT LESS THAN 6' COVER UNDER GREEN SPACE OR PIPES WITH MORE THAN 6' OF COVER BUT LESS THAN 8' UNDER HARD SURFACE

NOTES:

- (1) IN AREAS WHERE EXISTING MATERIAL IS NOT SUITABLE AS BACKFILL, THE ENGINEER MAY DIRECT THE PLACEMENT OF GRANULAR BACKFILL. GRANULAR BACKFILL WILL BE PAID AND MEASURED AS GRANULAR BACKFILL (LV). DISPOSAL OF EXCESS EXCAVATED MATERIAL SHALL BE CONSIDERED INCIDENTAL TO GRANULAR BACKFILL (LV).

SEWER PIPE BEDDING	S-5
---------------------------	-----

SANITARY SEWER PIPE INSULATION	S-6
---------------------------------------	-----

GENERAL CONSTRUCTION NOTES

- THE CONTRACTOR SHALL VERIFY ALL EXISTING CONDITIONS PRIOR TO CONSTRUCTION AND NOTIFY OWNER OF ANY DIFFERENCES BETWEEN THE FIELD AND PLAN.
- UNLESS OTHERWISE NOTED, ALL MATERIALS, CONSTRUCTION TECHNIQUES AND TESTING SHALL CONFORM TO THE 2023 EDITION OF THE "STANDARD SPECIFICATIONS FOR TRENCH EXCAVATION AND BACKFILL/SURFACE RESTORATION, WATERMAIN AND SERVICE LINE INSTALLATION AND SANITARY SEWER AND STORM SEWER INSTALLATION" AS PUBLISHED BY THE CITY ENGINEERS ASSOCIATION OF MINNESOTA AND THE "STANDARD SPECIFICATIONS FOR CONSTRUCTION" AS PUBLISHED BY THE MINNESOTA DEPARTMENT OF TRANSPORTATION, 2020 EDITION. THE CONTRACTOR SHALL REQUIRE ALL PROCEDURES AS OUTLINED BY THE LOCAL AGENCY.
- THE CONTRACTOR SHALL RECEIVE THE NECESSARY PERMISSION/PERMITS FOR ALL WORK LOCATED OUTSIDE OF THE MUNICIPAL RIGHT-OF-WAY AND PROPERTY LIMITS.
- THE CONTRACTOR SHALL VERIFY ALL EXISTING PIPE LOCATIONS AND ELEVATIONS PRIOR TO BEGINNING CONSTRUCTION.

GENERAL DEMOLITION & REMOVAL PLAN NOTES

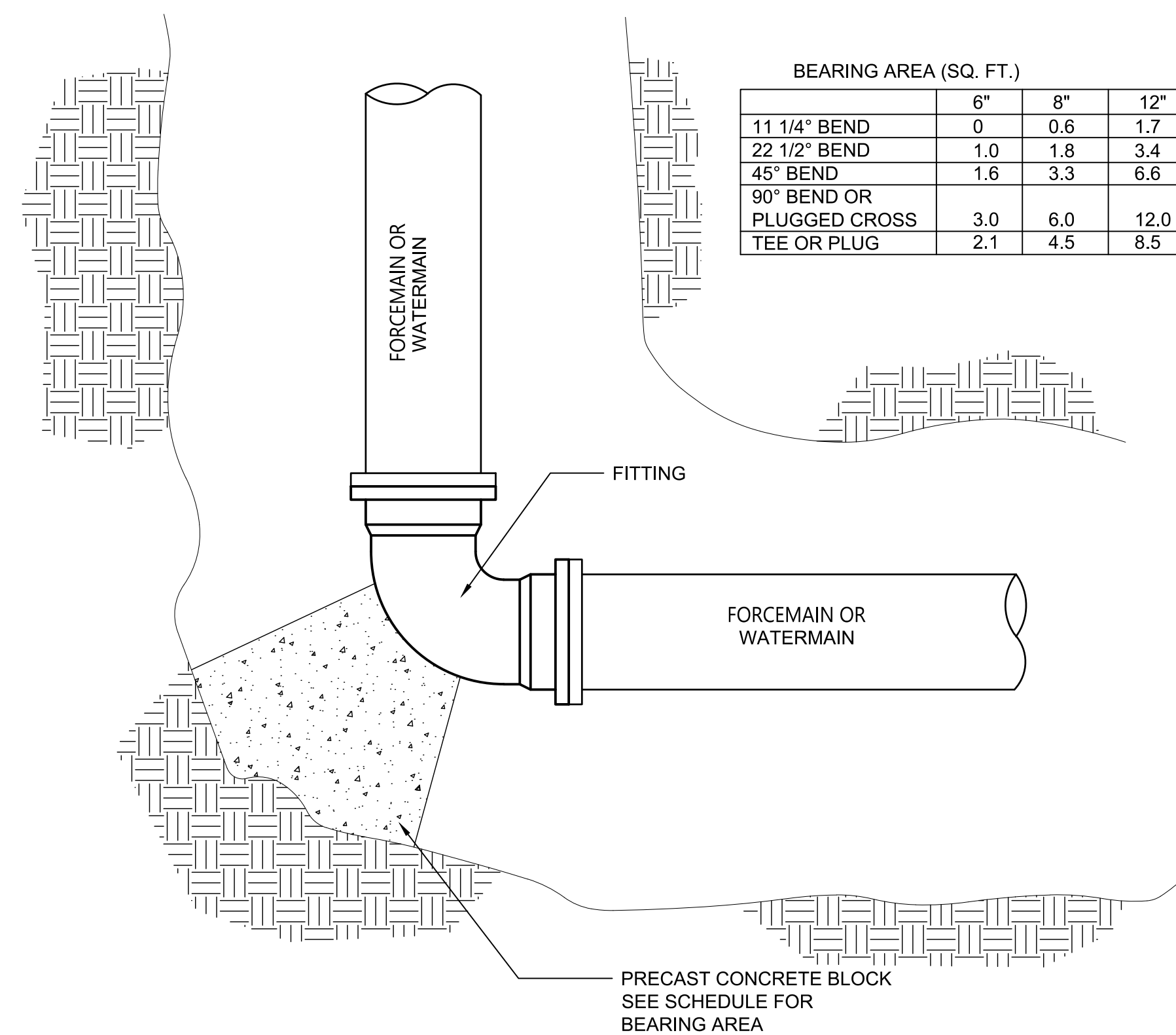
- THE SUBSURFACE UTILITY INFORMATION IN THIS PLAN IS UTILITY QUALITY LEVEL D. THIS UTILITY QUALITY LEVEL WAS DETERMINED ACCORDING TO THE GUIDELINES OF CI/ASCE 38-02. ENTITLED "STANDARD GUIDELINES FOR THE COLLECTION AND DEPICTION OF EXISTING SUBSURFACE UTILITY DATA".
- PRIVATE UTILITY LOCATES ARE TO BE COORDINATED WITH THE ENGINEER. THE PRIVATE LOCATES WILL BE DONE BY GOPHER STATE ONE CALL. ALL EROSION CONTROL MEASURES AS SHOWN ON THE EROSION CONTROL PLAN ARE TO BE IN PLACE PRIOR TO BEGINNING REMOVALS.
- CONTRACTOR SHALL PROTECT ALL EXISTING STRUCTURES, CONCRETE PAVEMENT, BITUMINOUS PAVEMENT, BUILDINGS, LIGHT POLES & BASES, ETC. NOT NOTED FOR DEMOLITION & REMOVAL DURING REMOVALS. ANY DAMAGED STRUCTURES TO REMAIN SHALL BE REPAIRED OR REPLACED AT NO COST TO THE OWNER.
- ALL SAWCUT EDGES IN CONCRETE WALK, CONCRETE PAVEMENT AND BITUMINOUS PAVEMENT SHALL BE PROTECTED AFTER REMOVALS THROUGH THE DURATION OF THE PROJECT. PAYMENT FOR SAWCUTTING WILL BE MADE ONLY ONCE. ADDITIONAL SAWCUTTING TO MAINTAIN A CLEAN SAWCUT EDGE WILL BE AT THE EXPENSE OF THE CONTRACTOR.
- ALL MATERIALS IDENTIFIED FOR REMOVAL SHALL BE DISPOSED OFF SITE IN ACCORDANCE WITH STATE AND LOCAL LAWS.

GENERAL EROSION CONTROL NOTES

- THE SUBSURFACE UTILITY INFORMATION IN THIS PLAN IS UTILITY QUALITY LEVEL D. THIS QUALITY LEVEL WAS DETERMINED ACCORDING TO THE GUIDELINES OF CI/ASCE 38-2, ENTITLED "STANDARD GUIDELINES FOR THE COLLECTION AND DEPICTION OF EXISTING SUBSURFACE UTILITY DATA".
- ALL CONSTRUCTION SHALL CONFORM TO LOCAL, STATE, AND FEDERAL REGULATIONS INCLUDING THE NATIONAL POLLUTANT DISCHARGE ELIMINATION SYSTEM (NPPDES) PERMIT REQUIREMENTS.
- ALL EXPOSED SOILS MUST BE STABILIZED WITHIN 14 CALENDAR DAYS OF ROUGH GRADE COMPLETION OF AFTER CONSTRUCTION TERMINATES. ALL STOCKPILES SHALL HAVE ADEQUATE SEDIMENT TRAPPING SYSTEMS INSTALLED AROUND THEM.
- ALL AREAS TO BE ESTABLISHED TO GRASS COVER SHALL RECEIVE 4" OF TOPSOIL AND SOD OR SEED. THESE AREAS SHALL BE WATERED UNTIL A HEALTHY STAND OF GRASS IS OBTAINED.
- SEE PLAN LEGEND FOR A COMPLETE LIST OF HATCHES AND SYMBOLS USED FOR EROSION CONTROL.

BASIS FOR ESTIMATED QUANTITIES

AGGREGATE BASE - CLASS 5	110LBS./SQ.YD./INCH THICKNESS
TWO-YEAR COVER CROP (TCC)	25LBS./ACRE
RESIDENTIAL TURFGRASS (RT)	200LBS./ACRE
HYDRAULIC REINFORCED FIBER MATRIX	3900LBS./ACRE
FERTILIZER TYPE 3 (SLOW RELEASE) (22-5-10)	200LBS./ACRE



TRUST BLOCKING

REVISED

DETAIL NO. 201A



DRAWN BY: NCP
CHECKED BY: NCP

HEREBY CERTIFY THAT THIS PLAN, SPECIFICATION, OR REPORT WAS PREPARED BY ME OR UNDER MY DIRECT SUPERVISION AND THAT I AM A DULY LICENSED PROFESSIONAL ENGINEER UNDER THE LAWS OF THE STATE OF MINNESOTA.
Nick Peterson
NICK PETERSON LIC. NO.: 64909 DATE: 05-18-2026

DATE	REV#	REVISIONS DESCRIPTION

SANITARY SEWER METERING IMPROVEMENTS

CIVIL DETAILS

C2.01

PROJECT #: 2025-10153

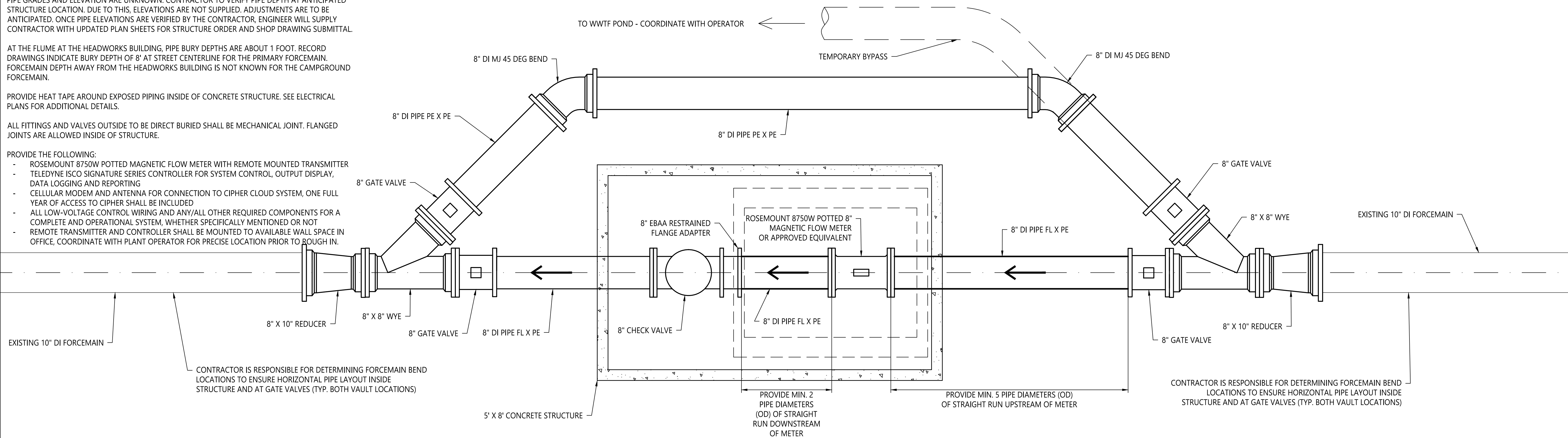
NOTES:
 PIPE GRADES AND ELEVATION ARE UNKNOWN. CONTRACTOR TO VERIFY PIPE DEPTH AT ANTICIPATED STRUCTURE LOCATION. DUE TO THIS, ELEVATIONS ARE NOT SUPPLIED. ADJUSTMENTS ARE TO BE ANTICIPATED. ONCE PIPE ELEVATIONS ARE VERIFIED BY THE CONTRACTOR, ENGINEER WILL SUPPLY CONTRACTOR WITH UPDATED PLAN SHEETS FOR STRUCTURE ORDER AND SHOP DRAWING SUBMITTAL.

AT THE FLUME AT THE HEADWORKS BUILDING, PIPE BURY DEPTHS ARE ABOUT 1 FOOT. RECORD DRAWINGS INDICATE BURY DEPTH OF 8" AT STREET CENTERLINE FOR THE PRIMARY FORCEMAIN. FORCEMAIN DEPTH AWAY FROM THE HEADWORKS BUILDING IS NOT KNOWN FOR THE CAMPGROUND FORCEMAIN.

PROVIDE HEAT TAPE AROUND EXPOSED PIPING INSIDE OF CONCRETE STRUCTURE. SEE ELECTRICAL PLANS FOR ADDITIONAL DETAILS.

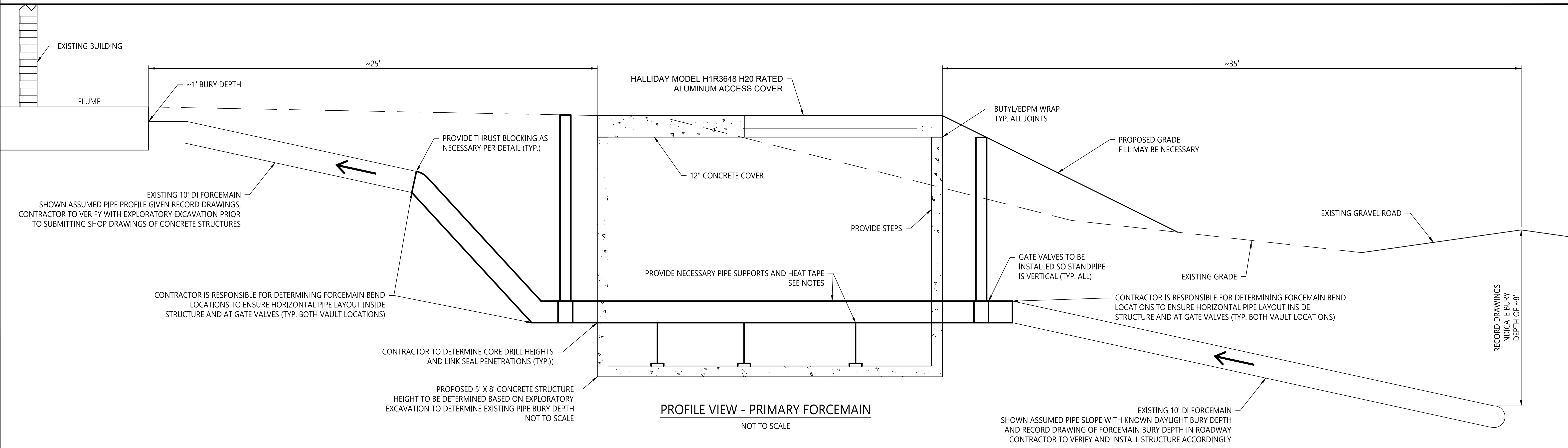
ALL FITTINGS AND VALVES OUTSIDE TO BE DIRECT BURIED SHALL BE MECHANICAL JOINT. FLANGED JOINTS ARE ALLOWED INSIDE OF STRUCTURE.

- PROVIDE THE FOLLOWING:
- ROSEMOUNT 8750W POTTED MAGNETIC FLOW METER WITH REMOTE MOUNTED TRANSMITTER
 - TELEDYNE ISCO SIGNATURE SERIES CONTROLLER FOR SYSTEM CONTROL, OUTPUT DISPLAY, DATA LOGGING AND REPORTING
 - CELLULAR MODEM AND ANTENNA FOR CONNECTION TO CIPHER CLOUD SYSTEM, ONE FULL YEAR OF ACCESS TO CIPHER SHALL BE INCLUDED
 - ALL LOW-VOLTAGE CONTROL WIRING AND ANY/ALL OTHER REQUIRED COMPONENTS FOR A COMPLETE AND OPERATIONAL SYSTEM, WHETHER SPECIFICALLY MENTIONED OR NOT
 - REMOTE TRANSMITTER AND CONTROLLER SHALL BE MOUNTED TO AVAILABLE WALL SPACE IN OFFICE, COORDINATE WITH PLANT OPERATOR FOR PRECISE LOCATION PRIOR TO ROUGH IN.



PLAN VIEW - PRIMARY FORCEMAIN

NOT TO SCALE

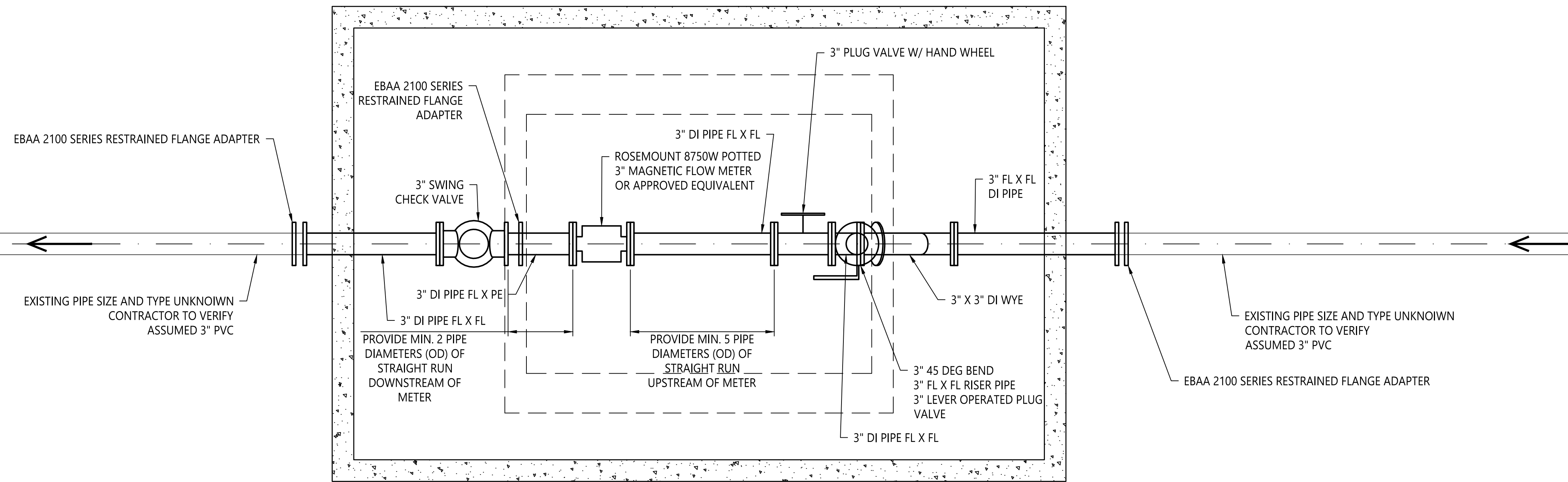


PROFILE VIEW - PRIMARY FORCEMAIN

NOT TO SCALE

© 2026 WIDSETH. FILE: W:\PROJECTS\CITY OF BREEZY POINT-32265\2026-10153\04 DESIGN\CIVIL\CADD\G-DT-2026-10153.DWG. PLOTTED BY: NICK PETERSON, May 19, 2026

DATE	REV#	REVISIONS DESCRIPTION



PLAN VIEW - CAMPGROUND FORCEMAIN

NOT TO SCALE

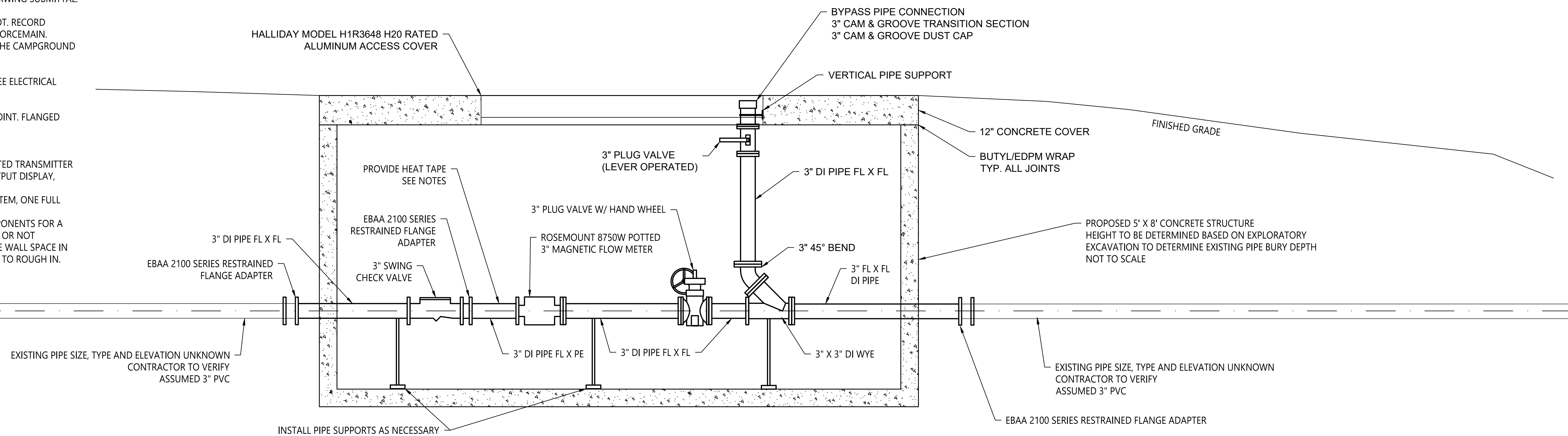
NOTES:
 PIPE GRADES AND ELEVATION ARE UNKNOWN. CONTRACTOR TO VERIFY PIPE DEPTH AT ANTICIPATED STRUCTURE LOCATION. DUE TO THIS, ELEVATIONS ARE NOT SUPPLIED. ADJUSTMENTS ARE TO BE ANTICIPATED. ONCE PIPE ELEVATIONS ARE VERIFIED BY THE CONTRACTOR, ENGINEER WILL SUPPLY CONTRACTOR WITH UPDATED PLAN SHEETS FOR STRUCTURE ORDER AND SHOP DRAWING SUBMITTAL.

AT THE FLUME AT THE HEADWORKS BUILDING, PIPE BURY DEPTHS ARE ABOUT 1 FOOT. RECORD DRAWINGS INDICATE BURY DEPTH OF 8' AT STREET CENTERLINE FOR THE PRIMARY FORCEMAIN. FORCEMAIN DEPTH AWAY FROM THE HEADWORKS BUILDING IS NOT KNOWN FOR THE CAMPGROUND FORCEMAIN.

PROVIDE HEAT TAPE AROUND EXPOSED PIPING INSIDE OF CONCRETE STRUCTURE. SEE ELECTRICAL PLANS FOR ADDITIONAL DETAILS.

ALL FITTINGS AND VALVES OUTSIDE TO BE DIRECT BURIED SHALL BE MECHANICAL JOINT. FLANGED JOINTS ARE ALLOWED INSIDE OF STRUCTURE.

- PROVIDE THE FOLLOWING:
- ROSEMOUNT 8750W POTTED MAGNETIC FLOW METER WITH REMOTE MOUNTED TRANSMITTER
 - TELEDYNE ISCO SIGNATURE SERIES CONTROLLER FOR SYSTEM CONTROL, OUTPUT DISPLAY, DATA LOGGING AND REPORTING
 - CELLULAR MODEM AND ANTENNA FOR CONNECTION TO CIPHER CLOUD SYSTEM, ONE FULL YEAR OF ACCESS TO CIPHER SHALL BE INCLUDED
 - ALL LOW-VOLTAGE CONTROL WIRING AND ANY/ALL OTHER REQUIRED COMPONENTS FOR A COMPLETE AND OPERATIONAL SYSTEM, WHETHER SPECIFICALLY MENTIONED OR NOT
 - REMOTE TRANSMITTER AND CONTROLLER SHALL BE MOUNTED TO AVAILABLE WALL SPACE IN OFFICE, COORDINATE WITH PLANT OPERATOR FOR PRECISE LOCATION PRIOR TO ROUGH IN.



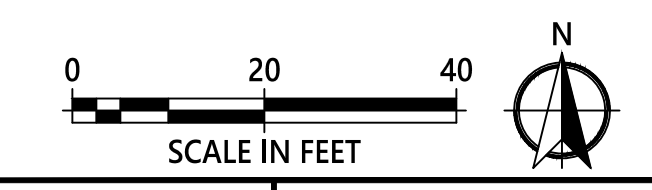
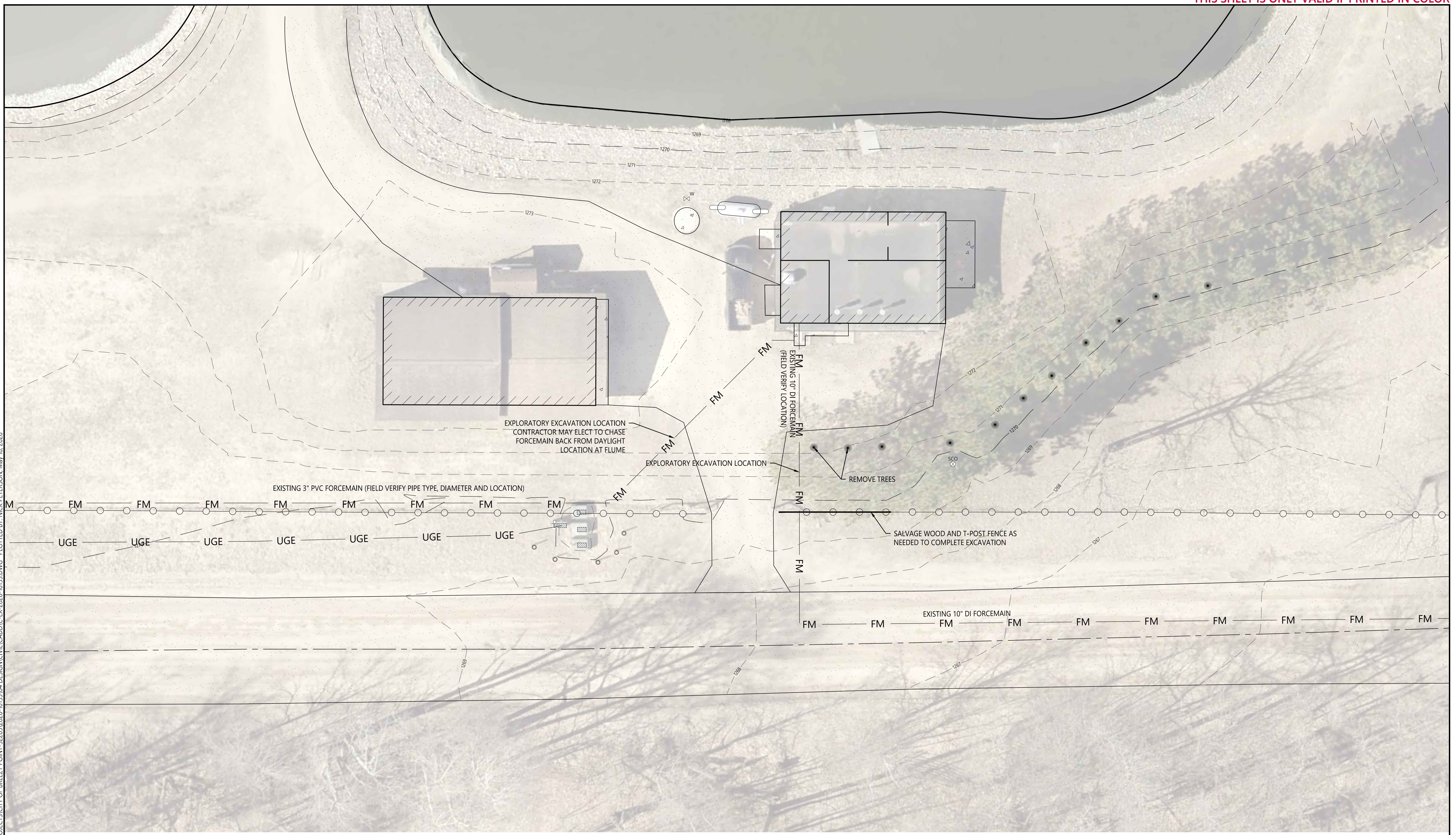
PROFILE VIEW - CAMPGROUND FORCEMAIN

NOT TO SCALE

© 2026 WIDSETH. FILE: W:\PROJECTS\CITY OF BREEZY POINT-32265\2026-10153\04 DESIGN\CIVIL\CADD\C-DT-2026-10153.DWG. PLOTTED BY: NICK PETERSON, May 19, 2026

DATE	REV#	REVISIONS DESCRIPTION

© 2026 WIDSETH FILE: W:\PROJECTS\CITY OF BREEZY POINT-32265\2026-10153\04 DESIGN\CIVIL\CADD\C-EX-2026-10153.DWG PLOTTED BY: NICK PETERSON, May 18, 2026



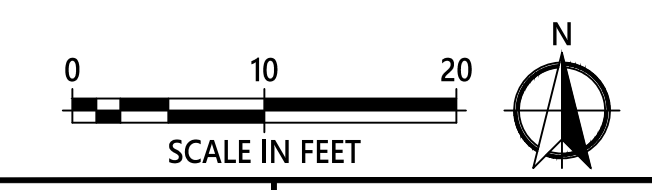
DRAWN BY: NCP
 CHECKED BY: NCP
 I HEREBY CERTIFY THAT THIS PLAN, SPECIFICATION, OR REPORT WAS PREPARED BY ME OR UNDER MY DIRECT SUPERVISION AND THAT I AM A DULY LICENSED PROFESSIONAL ENGINEER UNDER THE LAWS OF THE STATE OF MINNESOTA.
Nick Peterson
 NICK PETERSON LIC. NO.: 64909 DATE: 05-18-2026

DATE	REV#	REVISIONS DESCRIPTION

SANITARY SEWER METERING IMPROVEMENTS
 EXISTING CONDITIONS & REMOVALS PLAN

C3.01
 PROJECT #: 2025-10153

© 2026 WIDSETH. FILE: W:\PROJECTS\CITY OF BREEZY POINT-32265\2026-10153\04 DESIGN\CIVIL\CADD\C-SP-2026-10153.DWG PLOTTED BY: NICK PETERSON, May 18, 2026



DRAWN BY: NCP
 CHECKED BY: NCP
 I HEREBY CERTIFY THAT THIS PLAN, SPECIFICATION, OR REPORT WAS PREPARED BY ME OR UNDER MY DIRECT SUPERVISION AND THAT I AM A DULY LICENSED PROFESSIONAL ENGINEER UNDER THE LAWS OF THE STATE OF MINNESOTA.
 Nick Peterson
 NICK PETERSON
 LIC. NO.: 64909 DATE: 05-18-2026

DATE	REV#	REVISIONS DESCRIPTION

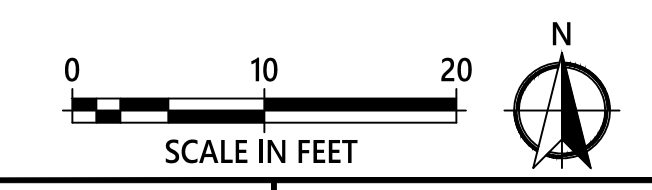
SANITARY SEWER METERING IMPROVEMENTS

SITE PLAN

C4.01

PROJECT #: 2025-10153

© 2025 WIDSETH. FILE: W:\PROJECTS\CITY OF BREEZY POINT-32265\2026-10153\04 DESIGN\CIVIL\CADD\C-85-2026-10153.DWG. PLOTTED BY: NICK PETERSON, May 18, 2026



DRAWN BY: NCP
 CHECKED BY: *Nick Peterson*
 NICK PETERSON
 LIC. NO.: 64909 DATE: 05-18-2026

DATE	REV#	REVISIONS DESCRIPTION

SANITARY SEWER METERING IMPROVEMENTS
 RESTORATION PLAN

C5.01
 PROJECT #: 2025-10153



LEGEND:
 UGE UNDERGROUND ELECTRIC

GENERAL ELECTRICAL NOTES:

1. ALL ELECTRICAL WORK SHALL COMPLY WITH THE CURRENT EDITION OF THE N.E.C.
2. ALL UNDERGROUND ELECTRICAL CONDUIT SHALL BE A MINIMUM OF 1 INCH SCHEDULE 80 PVC, UNLESS NOTED OTHERWISE, AND SHALL BE BURIED AT A MINIMUM OF 30 INCHES BELOW FINISHED GRADE.
3. ALL UNDERGROUND CIRCUIT CONDUCTORS SHALL BE A MINIMUM OF #10 AWG, XHHW, UNLESS NOTED OTHERWISE.
4. WIRE COUNTS MAY NOT BE SHOWN. IT IS THE RESPONSIBILITY OF THE ELECTRICAL CONTRACTOR TO COORDINATE THE NUMBER OF CONDUCTORS REQUIRED. PROVIDE A SEPARATE NEUTRAL FOR EACH CIRCUIT. NO SHARED NEUTRALS.
5. PROVIDE ALL COMPONENTS, ACCESSORIES, CONDUIT, WIRE, AND DEVICES REQUIRED FOR A FULLY FUNCTIONAL SYSTEM WHETHER SHOWN ON THE CONTRACT DOCUMENTS OR NOT. FOLLOW ALL MANUFACTURER'S INSTALLATION RECOMMENDATIONS AND REQUIREMENTS.
6. THE CONTRACTOR SHALL BE RESPONSIBLE FOR LOCATING ALL UTILITIES PRIOR TO BEGINNING WORK. COORDINATE LOCATIONS OF UNDERGROUND ELECTRICAL CONDUITS WITH OTHER TRADES AND CONSTRUCTION ACTIVITIES PRIOR TO INSTALLATION.
7. PROVIDE IN-GROUND HANDHOLES WHERE NECESSARY TO COMPLETE THE INSTALLATION.
8. THE CONTRACTOR SHALL ADJUST ELECTRICAL CIRCUITS THAT ARE EXISTING TO REMAIN AS NECESSARY TO KEEP EXISTING CIRCUITS POWERED AND COMPLETE INSTALLATION AS SHOWN.
9. ENGINEER IN FIELD TO VERIFY EXACT PLACEMENT OF ALL DEVICES.

ELECTRICAL REFERENCE NOTES:

- ① CONNECT FLOW METERS TO AVAILABLE 15/1 OR 20/1 SPARE CIRCUIT BREAKER IN EXISTING PANEL, OR PROVIDE NEW 20/1 CIRCUIT BREAKER IN EXISTING SPACE IN EXISTING PANEL.
- ② PROVIDE 1" C, 2#10 + 1#10G. FOR POWER FROM EXISTING ELECTRICAL PANEL TO NEW FLOW METER IN METER VAULT. ROUTING IS DIAGRAMMATIC, FIELD VERIFY AND ADJUST ROUTING AS REQUIRED.
- ③ PROVIDE 1" C. FOR CONTROL WIRING (CONTROL WIRING PROVIDED AND INSTALLED BY FLOW METER PROVIDER/INSTALLER). ROUTING IS DIAGRAMMATIC, FIELD VERIFY AND ADJUST ROUTING AS REQUIRED.
- ④ PROPERLY WEATHER SEAL ALL ELECTRICAL CONDUIT PENETRATIONS THROUGH EXTERIOR WALL OF EXISTING BUILDING. PROVIDE CONDUIT SEALANT AND CONDUIT EXPANSION JOINTS WHERE CONDUIT TRANSITIONS FROM EXTERIOR SPACE AND ENTERS BUILDING.
- ⑤ FLOW METER PROVIDED BY OTHERS. COORDINATE WITH FLOW METER PROVIDER/INSTALLER FOR LOCATION AND CONNECTION REQUIREMENTS PRIOR TO ROUGH-IN. ALL ELECTRICAL CONDUIT, CONNECTIONS, BOXES, ETC. IN METER VAULT SHALL BE RATED FOR CLASS 1, DIV. 2; ALL HARDWARE, SUPPORTS, ETC. IN METER VAULT SHALL BE CORROSION RESISTANT AND RATED FOR USE IN INSTALLED LOCATION. FINAL CONNECTION TO FLOW METER SHALL BE WITH LIQUID TIGHT FLEXIBLE NON-METALLIC CONDUIT.
- ⑥ PROVIDE AND INSTALL PROTHERM DEKORON 2700 SERIES #27-10-1-1-R SELF-REGULATING HEATING CABLE, OR EQUAL, WITH A SUPPLY VOLTAGE OF 120V AND AN OUTPUT WATTAGE OF 10W PER FOOT. INSTALL HEAT TAPE AROUND EXPOSED PIPING INSIDE OF CONCRETE STRUCTURE (APPROX. 50 FEET EACH, VERIFY ACTUAL LENGTHS REQUIRED PRIOR TO ORDERING). PROVIDE POWER CONNECTION FROM EXISTING ELECTRICAL PANEL IN OFFICE; PROVIDE MINIMUM OF 20/1 CIRCUIT BREAKER IN EXISTING SPARE OR SPACE IN EXISTING ELECTRICAL PANEL; PROVIDE OVERCURRENT PROTECTION ACCORDING TO MANUFACTURER'S RECOMMENDATIONS.
- ⑦ PROVIDE 1" C, 2#10 + 1#10G. FOR POWER FROM EXISTING ELECTRICAL PANEL TO NEW HEAT TAPE IN METER VAULT. ROUTING IS DIAGRAMMATIC, FIELD VERIFY AND ADJUST ROUTING AS REQUIRED.
- ⑧ APPROXIMATE LOCATION OF EXISTING ELECTRICAL PANEL IN OFFICE. FIELD VERIFY LOCATION PRIOR TO BEGINNING WORK.
- ⑨ CLASS 1, DIV. 1 SPACE. DO NOT ROUTE ELECTRICAL THROUGH THIS AREA.
- ⑩ PROVIDE POWER TO FLOW METER REMOTE TRANSMITTER AND DATA LOGGER (PROVIDED AND INSTALLED BY OTHERS) AS REQUIRED. COORDINATE INSTALLATION LOCATIONS WITH OWNER AND OTHER TRADES PRIOR TO ROUGH-IN. PROVIDE ALL 120V ELECTRICAL COMPONENTS ACCORDING TO MANUFACTURER'S RECOMMENDATIONS AND/OR AS REQUIRED FOR A COMPLETE INSTALLATION. CONNECT TO AVAILABLE 15/1 OR 20/1 SPARE CIRCUIT BREAKER IN EXISTING PANEL, OR PROVIDE NEW 20/1 CIRCUIT BREAKER IN EXISTING SPACE IN EXISTING PANEL.
- ⑪ METER VAULT IS A CLASS 1, DIVISION 2 SPACE. ALL ELECTRICAL COMPONENTS AND CONNECTIONS SHALL BE RATED FOR USE IN THIS LOCATION.

© 2026 WIDSETH. FILE: W:\PROJECTS\CITY OF BREEZY POINT-32265\2026-10153\04 DESIGN\ELECTRICAL\CADD\E-SP-2026-10153.DWG. PLOTTED BY: PHILIP READY, May 12, 2026



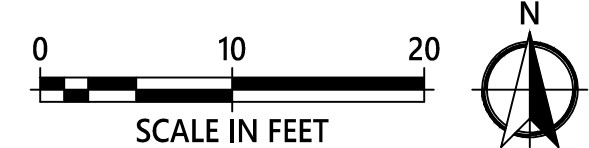
DRAWN BY: PWR
 CHECKED BY: PWR
 PHILIP W. READY LIC. NO.: 62081 DATE: 05-15-2026

I HEREBY CERTIFY THAT THIS PLAN, SPECIFICATION, OR REPORT WAS PREPARED BY ME OR UNDER MY DIRECT SUPERVISION AND THAT I AM A DULY LICENSED PROFESSIONAL ENGINEER UNDER THE LAWS OF THE STATE OF MINNESOTA

DATE	REV#	REVISIONS DESCRIPTION

SANITARY SEWER METERING IMPROVEMENTS

SITE PLAN - ELECTRICAL



E1.0

PROJECT #: 2026-10153