

STATEMENT OF QUALIFICATIONS

ENGINEERING SERVICES

TXCDBG DOWNTOWN REVITALIZATION PROGRAM

FEBRUARY 2, 2023



Enprotec | **Hibbs & Todd**

Abilene | Lubbock | Granbury

PE Firm Registration No. 1151

PG Firm Registration No. 50103

RPLS Firm Registration No. 10011900

Corporate Headquarters

402 Cedar Street

Abilene, Texas 79601

T: (325) 698-5560

F: (325) 690-3240

www.e-ht.com

February 2, 2023

City of Breckenridge
Attn: Cynthia Northrop
City Manager
105 N. Rose Avenue
Breckenridge, Texas 76424

**Re: RFQ for Engineering Design Services
TxCDBG Downtown Revitalization/Main Street Program (DRP/MS) Fund**

Dear Ms. Northrop:

Enprotec / Hibbs & Todd, Inc. (eHT) is pleased to submit the qualifications of our firm to the City of Breckenridge (City) for consideration to provide professional engineering design services for the Texas Community Development Block Grant (TxCDBG) Program Downtown Revitalization Program Project. We are committed to providing the City with the highest quality of professional services and consulting for this important and timely project.

Our Abilene, Granbury and Lubbock offices are staffed with highly-skilled engineers, scientists, plant operators, surveyors, construction management personnel and technicians that stand ready to work on this project. Further, you will be personally taken care of by principals of our firm. We have worked with the TDA TxCDBG Program for over 30 years and are conversant with the rules and regulations.

Should additional information be desired, please don't hesitate to contact me.

Sincerely,

Enprotec / Hibbs & Todd, Inc.



Sage Diller, PE
Associate Vice President

TABLE OF CONTENTS

Profile

- About eHT
- Client Vision Statement
- Funding Objectives & Sources
- Company Principals
- eHT Services

Experience

- Funded Project Experience
- Relevant Experience

Capacity to Perform

- Organizational Chart
- Team Experience
- Key Personnel

Work Performance

- Regional Funded Projects
- Ability to Meet Schedules
- Community Service Projects
- Federally Funded Construction Projects
- Cost Control
- Permitting & Regulatory Compliance
- Labor Resources
- Quality of Work
- Project Approach

Appendix

- Insurance
- Affirmative Action
- Registration
- System for Award Management
- TDA TxCDBG Certification
- Certification Regarding Lobbying
- Conflict of Interest Questionnaire



PROFILE

About eHT

Enprotec / Hibbs & Todd, Inc. (eHT) is a civil, municipal, environmental and geotechnical engineering firm with offices in Abilene, Granbury and Lubbock in the State of Texas. Our staff consists of engineers, surveyors, geologists, scientists, construction material lab technicians and field operations professionals.

Our success is based on enduring partnerships with our clients. eHT professionals bring a solid foundation of expertise and innovation to each client's project.

Client Vision Statement

Our goal is to be an organization where we attract clients with whom we can create enduring relationships. We want our clients to feel that we care about them personally and to view our people as being knowledgeable (experts) and honest. We desire to be a "user-friendly" company, providing clear, informative communication and quality work. We define product quality as timely, accurate and complete work. We define service quality as being dependable, trustworthy and confident in our work.

eHT is a forward-thinking and progressive team of engineers and scientists with deep industry expertise, knowledge and resources. We understand the importance of being a consulting firm that clients can depend on for knowledge and expertise.

More than 80% of our business comes from repeat clients. We feel that in order to take care of our clients, we must learn their business. We realize that we are working for you, and for the citizens you serve as well.

We are in the business of improving community infrastructure while creating sustainable development and preserving some of our most prized natural resources. In essence, we offer engineering solutions with a view for tomorrow.

With offices serving Texas, our resources are strategically located to meet our clients' need for personal and reliable service. Each of our offices has a unique set of skill sets that complement each other. We have helped our clients place the past behind them, manage the present and plan for a profitable future. Our diverse staff of professionals is one of our greatest assets. Our people care about their work and their relationships with clients. From planning to completion, each project is personally handled by people who know our clients and their businesses. Our staff of engineers and professionals provides clients with practical, cost-effective engineering solutions.



Resources

High Senior Staff Interaction

Regional Texas Offices

Diverse Expertise Across Texas

Low Overhead

Engineering-Science-Operations Mix

System Operators on Staff

Emphasis on Relationships

Regulatory Agency Relationships

Funding Agency Relationships

Client Commitment

Experienced Attention to Project Needs and Goals

Partnership, Advocacy and Planning

Client Benefits

Appropriate Attention to Project Needs and Goals

Higher Personal Interaction and Responsiveness

Solid Advice to Clients on Infrastructure Issues

Efficient and Effective Design and Construction

User-Friendly Engineering Design

Efficient and Effective Funding Agency Coordination

Our experience with mid-sized clients provides a customized approach – ONE SIZE DOES NOT FIT ALL!

**WE ARE IN THE BUSINESS OF IMPROVING
COMMUNITY INFRASTRUCTURE WHILE
CREATING SUSTAINABLE DEVELOPMENT
AND PRESERVING SOME OF OUR
MOST PRIZED NATURAL RESOURCES.
IN ESSENCE, WE OFFER ENGINEERING
SOLUTIONS WITH A VIEW FOR
TOMORROW.**



REQUEST FOR QUALIFICATIONS FOR ENGINEERING SERVICES
2022 TXCDBG DOWNTOWN REVITALIZATION PROGRAM FUND
FEBRUARY 2, 2023



Funding Objectives and Sources

Engineering and construction services funded under the Texas Department of Agriculture (TDA) can improve, modernize and expand local resources enabling entities to accommodate current and future needs of the community. eHT has extensive experience with TDA-funded projects and processes. You can rely on our services to assist in the application process and you can rely on our expertise to deliver sound engineering projects. Our project team has a long-term record of experience with state and federal funding agency requirements to manage projects without unnecessary delays. An important aspect of working with local governments is understanding the funding mechanisms and programs. eHT has been involved over the past 30 years in helping municipalities and counties obtain the necessary funding they need for their public works projects.

We have experience with the following programs and agencies:

- Texas Department of Agriculture (TDA): Community Development Fund (CD), Community Development Block Grant (CDBG), Texas Capital Fund (TCF), Colonia Planning Fund (CPF), Colonia Construction Fund (CFC), Colonia Economically Distressed Areas Program (CEDAP), Planning and Capacity Building Fund (PCB), Disaster Relief Fund (DR), Urgent Need (UN), Small Towns Environment Program (STEP), Renewable Energy Demonstration Pilot Program (REDPP), American Recovery & Reinvestment Act (ARRA), Disaster Recovery, Renewable Energy
- Texas Water Development Board (TWDB): Economically Distressed Areas Program (EDAP), Drinking Water State Revolving Fund (DWSRF), Clean Water State Revolving Fund (CWSRF), Rural Water Assistance Fund, Water Infrastructure Fund, State Participation Program-Regional Water and Wastewater Facilities, Regional Facility Planning Grant Program, Texas Water Development Fund (DFund)
- Rural Development (RD)
- Economic Development Administration (EDA)
- North American Development Bank (NADBank)
- South Texas Development Council (STDC)
- Texas Department of Transportation (TxDOT)
- Texas Parks and Wildlife Department (TPWD)

Company Principals

Scott F. Hibbs, PE, President
Bob Benham, CFO
Scott Yungblut, PE, VP
Joshua L. Berryhill, PE, VP
Chris Hay, PE, Ass. VP

Keith P. Kindle, PE, BDO
Scott D. Hay, PE, VP
Jordan S. Hibbs, PE, VP
Sage Diller, PE, Ass. VP
Colden S. Rich, Ass. VP

eHT Services

Water Resources

Water Supply Planning
Development of Water Supplies
Water Transmission / Distribution
Water Treatment
Elevated / Ground Storage
Pump Station Design and Improvements

Wastewater Services

Wastewater Treatment
Wastewater Collection and Transmission
Reclaimed Water
Wastewater Master Planning

General Civil

Street, Paving, Grading and Drainage Design
Land Development
Stormwater Management
Park and Trail Design
Municipal Pool Design
Athletic Facilities
Downtown Revitalization and Sidewalk Improvements

Assessment Services

Monitoring Programs
Feasibility Studies
Risk-Based Assessments
TRRP Assessments
Air Quality Sampling
Water and Soil Sampling
Subsurface and Groundwater Assessments
Phase I and II Transaction Assessments
Indoor Air Quality Assessments
Pollution Prevention

Regulatory Compliance

Process Safety Management
Risk Management Plans
Compliance Audits
Sara Title III Compliance
Regulatory Agency Interface
NEPA Environmental Documents

Remediation Services

Corrective Action Plans
Feasibility Studies
Pilot Tests
Groundwater Recovery
Implementation of Remedial Technologies such as Vapor Extraction, Bioremediation, Soil Venting, Air Sparging
Water, Soil and Air Treatment
Plume Stability Monitoring
Closure Plans



Solid / Hazardous Waste

Landfill Design and Permitting
Solid Waste Planning
Landfill Construction Quality Control and Assurance
Soil Liner Evaluations, Inspections and Reports
Landfill Closure / Post Closure Monitoring
Hazardous Waste Management Plans
RCRA Facility Permitting
TSD Facility Audits
Air Quality Sampling
Water and Soil Sampling
Aquifer Testing
Soil Vapor Surveys
Subsurface and Groundwater Assessments

Permitting

Domestic Wastewater Permitting
Industrial Wastewater Permitting
Air Permitting
Solid / Hazardous Waste Permitting
Development of CT Studies for Potable WTPs

Pollution Prevention Services

Recycling and Resource Recovery
Waste Stream Reduction and Alternatives
Stormwater Management
Pollution Prevention Plans
Spill Prevention Control and Countermeasure Plans

Construction Management and Inspection

Construction Administration and Management
Peer Review
Bidding Support
Start-up Support
Construction Support
Resident Construction Inspection

Contract Operations

Surface and Groundwater Treatment Plant Operations
Wastewater Treatment Plant Operations
Water Distribution System Flushing Programs
Public Water System Tank Inspections
Monthly, Quarterly and Annual Monitoring and Reports
Collection and Analysis of Compliance Samples
Organizing and Digitizing Plant Information
Optimizing and Troubleshooting Chloramine Residuals
Identifying and Resolving System and Water Quality Issues
Monitoring Plans, Laboratory Approval and NAPs
Water and Wastewater Facilities Startup and Commissioning
Production of Operations and Maintenance Manuals
Response Measures to TCEQ Issued Violations
Alternative Capacity Requirements for Public Water Systems
Water Conservation and Drought Contingency Plans and
Annual Water Conservation Reporting
Risk Management Plans (RMP) and RMP Training
Emergency Response Plans

Mold Consulting

Sampling and Testing
Mold Inspection and Assessment
Mold Remediation Plans

Asbestos Consulting

Building / Facility Surveys
Condition Assessments
Bulk Sample Collection
Preparation of Operation and Maintenance Programs
Asbestos Abatement Project Design & Specifications
Asbestos Abatement Contractor Bid Evaluation
Abatement Monitoring and Administration
Hazard Awareness Training and Consulting
OSHA Compliance Consulting
AHERA Compliance Consulting
NESHAP Compliance Consulting

Geotechnical Engineering

Subsurface Explorations - Borings
Soil Property Evaluations
Foundation Recommendations
Pavement Recommendations
Roadway and Parking Lot Upgrades

Construction Materials Testing

Material Sampling
Concrete Mix Design
Concrete Cylinders and Beams
Slump Testing
Air Content Testing
Plant Inspection
Moisture Contents
Atterberg Limits Testing
Sieve Analysis
Specific Gravity and Absorption
Proctor Information
Field Density Testing
Core Sampling
Wet Ball Mill Testing
Soundness Testing
Abrasion Testing
CBR Testing
Hot Mix Design

Surveying Services

Boundary, Topographic, Route, ALTA/ACSM, Plats/Maps



EXPERIENCE

Experience with Federal and Grant Programs Past 10 Years

City of Abilene	2018 TWDB Water Meter Replacement	Jones County	2016 CDBG Water System Improvements
Acton MUD	2022 TWDB Wastewater Treatment Plant #1 2022 TWDB Wastewater Treatment Plant #2	LLWSSSC	2013 TWDB Water Treatment Improvements
City of Alamo	2022 TWDB Wastewater Treatment Plant	City of Loraine	2021 CDBG Comprehensive Plan 2017 CDBG Water System Improvements 2012 CDBG Water and Sewer Improvements
City of Ballinger	2022 ARPA Water Meter Replacement 2021 CDBG Paving Improvements 2013 CDBG Wastewater Improvements	City of Malone	2015 TWDB Water System Improvements
City of Beeville	2018 TWDB WTP Improvements	City of Mason	2017 TWDB Water Treatment Project
City of Big Lake	2022 ARPA Water System Improvements 2021 CDBG Water Line Improvements 2017 CDBG Water System Improvements	City of Mertzon	2022 CWSRF Wastewater Improvements 2016 CDBG Water and WW Improvements 2012 CDBG Water and Wastewater System
City of Blanket	2022 CDBG Water System Improvements	Mullin ISD	2022 TWDB Water System Improvements
City of Brady	2022 TWDB and EDAP Radium Reduction Project	City of New Deal	2019 CDBG Water System Improvements 2018 TWDB Water System Improvements
City of Breckenridge	2022 TWDB Water System Improvements 2022 ARPA Water Meters and Lift Station 2021 TWDB Wastewater Improvements 2016 TWDB Wastewater Treatment Plant 2015 TWDB Water Treatment Plant 2014 CDBG Water Line Replacement 2013 TWDB Water Treatment Improvements 2012 TWDB Wastewater Improvements	City of Paducah	2020 TWDB Water System Improvements
City of Brownfield	2018 TDA Downtown Revitalization Project	Palo Pinto County	2013 TWDB Water Treatment Improvements
City of Cisco	2022 TWDB WWTP Improvements 2018 TWDB Water Treatment Plant 2018 CDBG Paving Improvements 2017 FEMA HGMP Emergency Sirens 2016 TWDB Water Treatment Plant 2013 TCF Sewer Infrastructure 2012 CDBG Water Improvements	Parker County SUD	2022 TWDB Water System Improvements
City of Coahoma	2022 USDA RD Wastewater Improvements 2020 CDBG Wastewater Treatment Plant Imp.	Town of Pecos City	2019 TWDB Wastewater System Improvements
City of Cool	2014 CDBG Water System Improvements	Pecos County	2017 CDBG Water Transmission Line 2014 CDBG Water System Improvements
Concho County	2013 CDBG Water System Improvements	Reagan County	2022 TxDOT Street Improvements 2021 TxDOT Street Improvements 2020 TxDOT Street Improvements 2016 TxDOT Street Improvements
Crockett County WCID1	2016 CDBG Sewer Line Improvements	Richmond-Rosenberg	2014 TWDB Water Treatment Plant
Crosby County	2012 CDBG Water System Improvements	City of Robert Lee	2022 ARPA Project
City of De Leon	2013 TWDB Water Treatment Improvements	City of Roma	2022 TWDB Wastewater Treatment Plant 2020 CDBG Paving Improvements 2017 CDBG Paving Improvements 2015 TWDB Regional Water System 2012 GLO Disaster Relief Paving
Dickens County	2013 TWDB Water Treatment Improvements	City of Roby	2014 CDBG Water System Improvements
City of Eden	2020 CDBG Water Line Improvements 2019 USDA RD Water and Wastewater System 2015 CDBG Water Line Replacement	Rolling Shores Water	2022 TWDB/FEMA Water System Improvements
City of Eastland	2022 TWDB FIF Flood Study 2021 GLO Flood Mitigation Improvements 2018 TWDB Water System Improvements 2017 CDBG WWTP Improvements 2016 TWDB Wastewater Treatment Plant	City of Roscoe	2021 ARPA Water System Improvements 2019 TWDB Water Distribution Improvements 2016 TWDB Wastewater Collection System 2013 TWDB Wastewater Treatment
Eastland County (ECWSD)	2021 GLO Flood Mitigation Improvements 2019 TWDB Water System Improvements 2017 CDBG Water Lines	City of San Angelo	2019 TWDB Groundwater Supply Project
City of Evant	2016 CDBG Water System Improvements 2014 CDBG Water System Improvements	City of Santa Anna	2022 ARPA Wastewater Improvements 2019 CDBG Wastewater System Improvements
Fisher County	2021 CDBG Water Line Improvements	Scurry County	2016 TxDOT Street Improvements
City of Glen Rose	2020 CDBG Street and Drainage Improvements 2018 TWDB Collection System Improvements 2016 CDBG Water System Improvements 2013 TWDB Wastewater Treatment Plant	City of Seminole	2022 ARPA System Improvements 2022 CDBG Drainage Improvements
City of Granbury	2022 CDBG Drainage Improvements 2021 ARPA Lift Station Improvements 2018 TWDB Water Treatment Plant Expansion 2018 TWDB Wastewater Treatment Plant 2017 TWDB Water System Improvements 2016 TWDB Meter Replacement Project 2016 TCF Water System Improvements	City of Sonora	2022 ARPA Sewer System Improvements
Hawley WSC	2016 CDBG Water System Improvements	City of Smyer	2022 USDA RD Application 2014 CDBG Water and Wastewater 2013 TWDB Water System Improvements
Hood County	2021 CDBG Pump Systems 2015 CDBG Sewer System Improvements	City of Spur	2019 CDBG Water and Sewer Improvements
Irion County	2012 CDBG Paving Improvements	City of Stamford	2016 TWDB Water System Improvements 2013 CDBG Water Storage Improvements
Johnson County SUD	2019 TWDB Water System Improvements	Sutton County	2020 CDBG Wastewater Improvements
		City of Sweetwater	2022 APRA Emergency Generator 2020 TWDB Water System Improvements 2020 TWDB Wastewater System Improvements 2018 CDBG Water Line Replacement 2016 TWDB Water System Improvements 2014 TWDB Water Treatment Improvements
		City of Texico	2017 CDBG Wastewater System Improvements
		ULRMWD	2022 TWDB Water System Improvements
		Valley WSC	2012 TWDB Water System Improvements
		City of Winters	2022 ARPA Pump Replacement 2020 CDBG Wastewater Collection System 2017 CDBG Wastewater Collection 2017 TWDB Water System Improvements 2014 CDBG Wastewater System Improvements 2014 TWDB Water Treatment Improvements

Downtown Sidewalk and Lighting Improvements City of Eden



eHT provided project management and design for 2,500 square yards of concrete sidewalk, curb ramps, driveways, curb and gutter and pedestrian lighting for the downtown square in Eden. The project was funded through the TxDOT Transportation Alternatives Program (TAP). Construction began in August 2019 and was completed in March 2020. The project improved downtown aesthetics, provided a continuous ADA compliant route and upgraded pedestrian lighting for the business area that fronts the downtown square.

Contact:
Laura Beeson, City Administrator, (325) 869-2211

Downtown Revitalization Project City of Seminole



eHT provided project management and design for approximately 600 linear feet of new sidewalk on two blocks of the downtown square of Seminole. The project consisted of stamped concrete, colored concrete, handicap accessibility to all store fronts, planter boxes with irrigation, custom light poles, and custom railing and handicap ramps. The project utilized funds from the Texas Capital Fund.

Contact:
Adam Niolet, City Manager, (432) 758-3676

Downtown Enhancement Project City of Ballinger

eHT designed approximately 2,100 linear feet of new concrete sidewalk, brick pavers, handicapped accessible ramps, decorative street lighting, trees and irrigation systems along U.S. Hwy 67 in the downtown business district of Ballinger. The project was used as a model by TxDOT for the Transportation Efficiency Act for the 21st Century (TEA-21) program.

Contact: Brian Frieda, City Manager, (325) 365-3511

Downtown Enhancement Project City of Winters

eHT assisted the City of Winters with successful application for funding of approximately 4,500 linear feet of new concrete sidewalk, brick pavers, ADA ramps, decorative street lighting, benches, planters, trees, and irrigation system along US Highway 83 in the downtown business district. The project was funded through the TxDOT Statewide Transportation Enhancement Program (TEA-21).

Contact: Sheila Lincoln, City Secretary, (325) 754-4424

Central Business District Street Repair City of Abilene



eHT provided surveying, design, and construction management of a concrete street repair project in the Central Business District (CBD) for the City of Abilene. The project scope included identification and mapping of widespread pavement deficiencies within the 44-block CBD. A subcontractor was hired to perform an aerial drone survey to develop the project base map, which was utilized to identify the various layout configurations of the existing concrete panels. eHT then utilized engineering staff to conduct a field survey to identify the pavement deficiencies and catalog the appropriate repairs. The project included repair of approximately 20,000 square yards (SY) of concrete streets including full/partial depth concrete pavement repair, spalled concrete repair, joint repair and concrete crack sealing.

Contact: Michael Rice, Assistant City Manager, (325) 676-6386



College Hills Boulevard Paving and Drainage City of San Angelo



eHT is providing project management, design and construction administration for the replacement of aging roadway surface with full depth base, as well as drainage improvements along College Hills Boulevard (CHB). The project includes the rehabilitation of water and sewer utilities, roadway design, drainage evaluation and improvements, right-of-way verification, design survey, geotechnical investigation and the development of plans and specifications.

Originally constructed in the 1970s, College Hills Boulevard crosses the Red Arroyo drainage basin which frequently experiences roadway closures due to floodwaters overtopping the roadway. eHT has determined that raising the roadway out of the 100-year floodplain would require upwards of 4 feet of vertical fill, significant re-grading of adjacent streets, and mitigation of multiple other flooding considerations. eHT is now assisting the City with development of solutions through a Master Drainage Plan and the City has applied for grant funding through the FHA BUILD program in order to fund drainage improvements.

Drainage analysis completed by eHT as part of the project has shown that the primary cause of flooding of CHB is the low and flat roadway profile across the Red Arroyo floodplain. The existing drainage structures under CHB are undersized and contribute little to preventing the roadway from overtopping during frequent rainfall events. Cost analysis performed by eHT showed that raising the profile of CHB across the Red Arroyo out of the floodplain exceeds the budget due to the vertical fill required to raise the roadway and the impacts on intersecting streets, commercial driveways and existing adjacent structures. Implementation of an underground drainage system along CHB was evaluated but large flows and high water levels within the Red Arroyo limit the effectiveness of this system without some form of upstream improvement. In order to meet the City's budgeted timeline while drainage solutions are developed and evaluated, eHT is preparing a utility replacement package to bid prior to roadway improvements.

Contact:
Shane Kelton, Executive Director of Public Works,
(325) 657-4206

Sayles Boulevard Project City of Abilene



eHT provided design, surveying, geotechnical and construction materials testing, project management and construction management for the pavement rehabilitation along Sayles Boulevard from Buffalo Gap Road to South Danville Drive. Design tasks included analysis of the drainage patterns to identify areas where grade changes could improve flow, recognizing areas with heavy vehicle, bicycle, and pedestrian traffic specifically in the areas adjacent to the school, and identifying existing utilities that were a significant hazard to construction efforts. eHT recommended and the City ultimately chose to implement a few minor grade changes, construct heavy duty concrete pavement in intersections and the section of road in front of the school, and install bike lanes and sidewalks where none were previously located. The project included lime stabilization of the subgrade, 42,000 square yards of flexible base, 10,000 tons of hot mix, 5,000 square yards of concrete pavement, concrete valley gutters and drainage crossings, traffic signal improvements and a concrete intersection at South 27th Street, 7,400 square yards of milling and asphalt replacement, and 47,000 square feet of new sidewalk.

Contact:
Scott Chandler, City Engineer, (325) 676-6077

University Drive City of Eastland

eHT provided project management, surveying, design, construction materials testing and construction management and inspection for a new hot-mix asphaltic concrete (HMAC) street in the City of Eastland which is approximately 215 feet in length and 40 feet wide with under-lying new flexible base material.

Contact: JJ Oznick, City Manager, (254) 629-8321



Drainage, Paving and Utilities Project City of Breckenridge



eHT provided project management, design, bid phase services and funding application support along with on-going construction administration services and inspection for this multi-faceted project including full depth roadway replacement, roadway excavation, new base material, grading, compaction, new hot mix asphalt, concrete pavement, new concrete curb and gutter and sidewalks. A storm drainage system has been installed that includes curb inlets, grate inlets, pipe, junction boxes and outfall structures. The project includes replacement of existing water lines and sewer lines in all areas of the paving project. Over 11,000 LF of water distribution lines (sizes 4", 6", 8" & 10" C900 PVC) and over 7,000 LF of wastewater collection line (sizes 6", 8" & 10" SDR-35 PVC) have been installed. More than 23,000 SY of reinforced concrete paving has been completed, which equates to more than twenty (20) City blocks. The paving improvements include new concrete driveways and street intersections along with over 4,300 square yards of sidewalk replacement. The project was funded through US Rural Development – Rural Utilities Service.

Contact: Cynthia Northrop, City Manager, (254) 559-8287

Paving Improvements City of Big Lake

eHT provided project management, design, bid phase services and construction administration for paving improvements along Pennsylvania Avenue and East 12th Street in the City of Big Lake. The existing paving conditions were deteriorated due to age and heavy traffic. The project consisted of 29,000 cubic yards of existing asphalt and base removal and replacement.

Contact: Sheri Benson, City Secretary, (325) 884-2511

Street Improvement Project City of Roma

eHT provided project management and design for roadway pavement reconstruction of approximately 2,420 linear feet of North Gladiator Boulevard including removal of existing pavement, re-compaction of existing base material, new hot mix and replacement of concrete valley gutters and curb and gutter. The project received grant funding through the Texas Department of Agriculture Texas Community Development Block Grant Program.

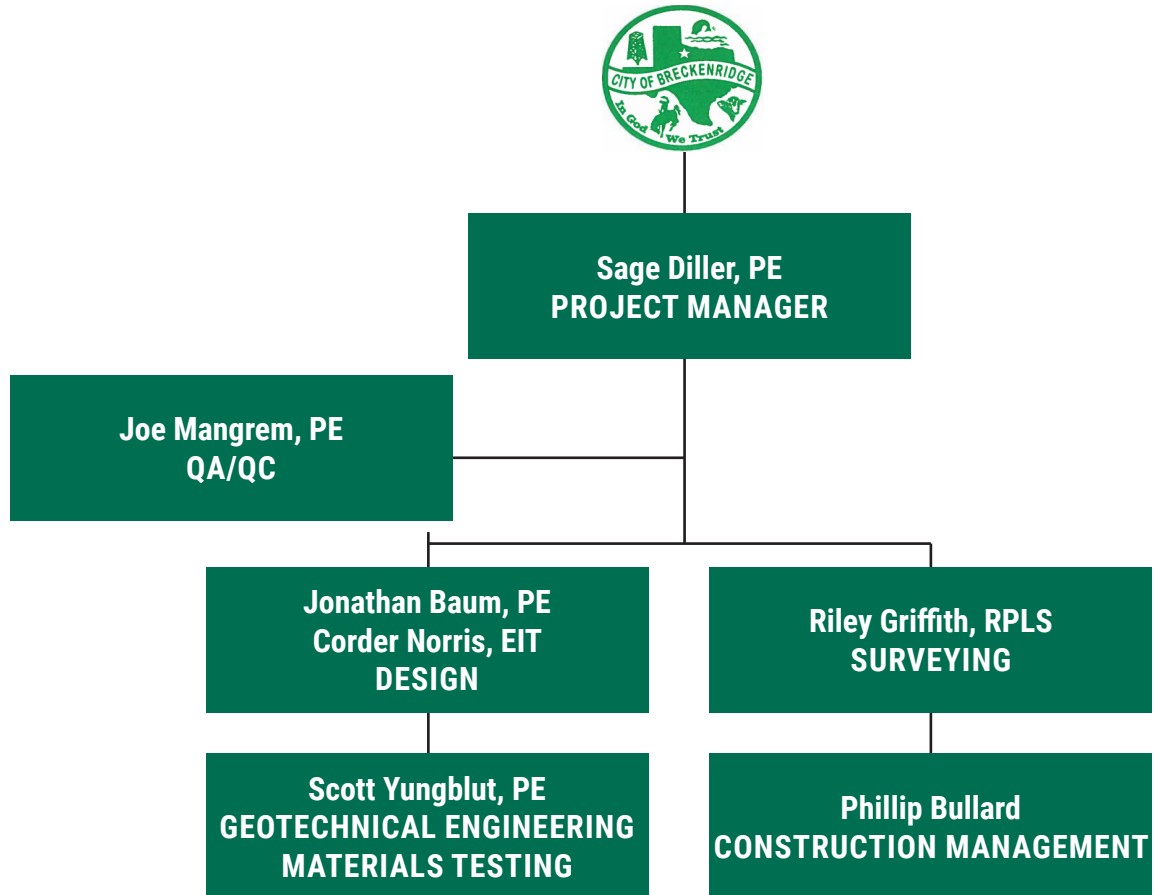
Contact: Alejandro Barrera, City Manager, (956) 849-1411



CAPACITY TO PERFORM

Organizational Structure

Key Personnel are listed herein. Additional personnel are available as needed.



Team Experience

Our Project Manager and Team Members have a strong understanding of the design, construction, regulatory and funding issues related to TDA funded projects.

We have listed key Team Members who will assist in accomplishing the objectives of various projects. Additional support personnel are available for the Project as needed.

Our resources include additional engineering professionals, survey crew members and Registered Professional Land Surveyors, geologists/geoscientists, field technicians and drafting personnel.

Resumes for the above personnel follow.



Sage Diller, PE Project Manager

PROFESSIONAL EXPERIENCE

Mr. Diller has over 19 years of experience in project design, management and construction oversight on a wide range of projects for municipal, state and private entities. His past projects have included municipal water and sewer systems, groundwater wells and storage facilities, state and county roadways and private developments. In addition to design and construction management, Mr. Diller has extensive experience assisting clients in applying for grant/loan funding through various funding agency programs, including Texas Water Development Board DWSRF and CWSRF, USDA Rural Development, Texas Department of Agriculture CDBG and DTR and TxDOT Utility Relocation and TAP Programs.

PROJECT EXPERIENCE

- **Park Street Paving and Drainage Improvements, City of Breckenridge:** Project Manager for construction of approximately 1,000 tons of hot mix asphalt paving, 23,400 square yards of concrete paving, 32,900 square yards of flexible base material, 11,500 linear feet of 4-inch to 12-inch water line, 7,400 linear feet of 6-inch to 10-inch sewer line, 1,400 linear feet of 18-inch to 36-inch storm drain, including curb, gutter and sidewalks.
- **Downtown Enhancement Project, City of Eden:** Mr. Diller served as Project Manager and provided project management and design for 2,500 square yards of concrete sidewalk, curb ramps, driveways, curb and gutter and pedestrian lighting. The project is funded through the TxDOT Transportation Alternatives Program (TAP).
- **Paving Improvements, Texas State Technical College Sweetwater:** Project Manager for improvements along Homer K. Taylor Drive and College Drive. The project consisted of the removal of existing pavement, installation of new flexible (HMAC) and rigid (Concrete) pavement, miscellaneous drainage improvements, sealcoating and striping.
- **Central Business District Concrete Street Repair, City of Abilene:** Mr. Diller served as Project Manager for the identification and mapping of widespread pavement deficiencies within the 44-block Central Business District of Abilene. An aerial drone survey was performed and a base map was developed.
- **Paving and Sealcoat Project, City of Seminole:** Mr. Diller has served as Project Manager and provided design, bidding and construction management for the City of Seminole's annual sealcoat projects for the last several years. Each year, the project includes approximately 100,000 square yards of sealcoat work.
- **Street Improvement Project, City of Roma:** Mr. Diller provided project management and design for roadway pavement reconstruction of approximately 2,420 linear feet of North Gladiator Boulevard including removal of existing pavement, re-compaction of existing base material, new hot mix and replacement of concrete valley gutters and curb and gutter. The project received grant funding through the Texas Department of Agriculture Texas Community Development Block Grant Program.



EDUCATION

Bachelor of Science, Civil Engineering
Texas Tech University, 2001

REGISTRATIONS

Registered Professional Engineer –
Texas #96645, 2005

PROFESSIONAL/CIVIC ORGANIZATIONS

Texas Society of Professional
Engineers

United Way of Abilene, Executive
Board and Finance Committee Chair

Texas Tech Alumni Abilene Chapter,
President, 2015

CERTIFICATIONS/EDUCATION

eHT Leadership Development
Program, 2013

Construction Specifications Institute
Priority Management, Dale Carnegie
HEC-RAS, Floodplain Management
Highway Capacity, Geopak I & II

AWARDS

20 Under 40, Abilene Young
Professionals

PROFESSIONAL ENDEAVORS

Enprotec / Hibbs & Todd, Inc.
Associate Vice President
Abilene, Texas
2007 - present

Texas Department of Transportation
(TxDOT), Lubbock District
Project Engineer
Lubbock, Texas
2001 - 2007



Joe Mangrem, PE QA/QC

PROFESSIONAL EXPERIENCE

Mr. Mangrem brings a unique owner's perspective with over seven years of experience in design, bidding, construction management, operation and maintenance of water, wastewater, street and drainage infrastructure. Working with input from the development community, Mr. Mangrem has developed and implemented design standards for municipalities, reviewed all aspects of development plans and performed field coordination between developer contractors and utility owners.

He is a skilled and capable civil engineer with a solid record of successful municipal public works design and construction projects. Prior to joining eHT he was the Assistant City Engineer for the City of San Angelo and provided direct support to the City Engineer with day to day operation of the department. Mr. Mangrem assisted with preparation of the annual operating budget and Capital Improvement Project plan and provided engineering support to the Planning and Development Services department as well as other city departments. He managed review and approval for acquisition and abandonment of public easement and right-of-ways and managed review and development plans and specifications for public infrastructure improvements. He also served as Project Engineer for the City of San Angelo. He reviewed development plans and specifications for compliance with City standards and evaluated material submittals to ensure compliance with City specifications. In this capacity he collaborated with City of San Angelo staff and the development community to compile and implement design standards for water and sewer.

Prior to his position with the City of San Angelo, Mr. Mangrem worked for the City of Lubbock as a Civil Engineering Associate. He designed and administered water utility capital improvement projects and prepared and reviewed construction plans, specifications and cost estimates. Mr. Mangrem managed multiple professional service contracts for studies, designs and construction representation and reviewed plans and specifications prepared by engineers for compliance with City of Lubbock standards. He also compiled and managed the City of Lubbock Public Works Design Standards manual.

PROJECT EXPERIENCE

- College Hills Boulevard Paving and Drainage, City of San Angelo
- Paving Improvements, City of Big Lake
- Sayles Boulevard, City of Abilene
- Airport Lift Station Improvements, City of Midland
- Water Distribution System Hydraulic Model Analysis, City of Midland
- Water Distribution System Disinfectant Residual Evaluation, City of Midland
- Wastewater System Model Analysis, City of Midland
- Wadley Elevated Storage Tank Piping Improvements, City of Midland



EDUCATION

Bachelor of Science, Ocean Engineering
Texas A&M University, 2010
New Mexico Military Institute, 2004

REGISTRATIONS

Registered Professional Engineer –
Texas #117205

PROFESSIONAL/CIVIC ORGANIZATIONS

American Society of Civil Engineers
National Society of Professional Engineers
Texas Society of Professional Engineers
American Waterworks Association
Abilene Chamber Young Professionals Association
Leadership San Angelo, 2016
Dale Carnegie Leadership Training, 2019

AWARDS

20 Under 40, Abilene Young Professionals

PROFESSIONAL ENDEAVORS

Enprotec / Hibbs & Todd, Inc.
Project Manager
Abilene, Texas
2017 - present
City of San Angelo
Assistant City Engineer
San Angelo, Texas
2015 - 2017
Project Engineer



Jonathan Baum, PE

Design

PROFESSIONAL EXPERIENCE

Mr. Baum has experience in the design of streets, water, sewer and gas lines, detention basins, water quality ponds, parking lots, storm drainage systems, retaining walls and stormwater pollution prevention plans. Mr. Baum's experience includes the design and plan production of over 50 residential and commercial developments. He has experience in project management, construction management and operations support. Mr. Baum has previous experience working as a Bridge Inspection Assistant on over 700 bridges. In this capacity, he produced TxDOT bridge appraisals and bridge summary forms, helped to develop software to integrate inspection reports and appraisal programs, calculated load rating analyses, created bridge inventory sketches using AutoCad and Microstation and drafted bridge designs using I10/Domion Dr. and Friendswood-Link Rd.

PROJECT EXPERIENCE

- **Abilene Law Enforcement Center, City of Abilene:** Mr. Baum provided site grading and paving plans for a new parking lot and sidewalks for the facility. He provided design of the stormwater drainage plan and underground storm drain piping for landscaping areas.
- **Student Housing Apartments, Hardin Simmons University:** Mr. Baum provided site grading and layout of retaining walls between new apartment buildings and existing City streets. He provided construction layout of buildings, curb and gutter and site utilities.
- **Remington Ridge Church of Christ:** Mr. Baum provided site plan layout and construction plans for site grading, paving, site utilities and stormwater detention. The project included a TxDOT driveway permit.
- **Whistle Stop RV Park:** Mr. Baum provided site grading, drainage plans, and private water and sewer utilities for clubhouse, offices and RV spaces. The project included public utility easement dedication for a City sewer main extension and building elevation certificates. He provided construction layout for all utilities, site curbing and parking areas.
- **Hendrick Home for Children Residence Cottages:** Mr. Baum provided construction layout and resolved elevation datum differences between plans and current GPS datum.
- **Fort Concho Barracks 3 and 4, San Angelo Area Foundation:** Mr. Baum provided pre-design topographic and utility surveying and prepared plans for site grading and site utilities for the construction of the two new buildings on a historical site.
- **Hampton Hills Section 3:** Mr. Baum provided design for a new residential subdivision and provided construction plans that consisted of street paving, water lines and sewer lines to serve 28 new homes.
- **Dyess Air Force Base Hospital Facilities, SES Construction and Fuels Services, LLC:** Mr. Baum provided project management and site plan design for the construction of temporary mobile units to be used as a temporary office building for Dyess Air Force Base personnel while hospital offices are renovated.



EDUCATION

Bachelor of Science, Civil Engineering
Texas A&M University, 2003

REGISTRATIONS

Registered Professional Engineer –
Texas #100982

PROFESSIONAL/CIVIC ORGANIZATIONS

American Society of Civil Engineers
Texas Society of Professional Engineers, Sporting Clays Tournament Chair
Hill Country Aggie Club

CERTIFICATIONS/EDUCATION

Erosion Control Materials and Soil Stabilization, Geo-Solutions, Inc.

Composite Elevated Water Tanks, Landmark Structures

Safety Inspection of In-Services Bridges, NHI/FHWA

Steel Bridge Design Conference, NHI/NSBA LRFD

PROFESSIONAL ENDEAVORS

Enprotec / Hibbs & Todd, Inc.
Project Manager
Abilene, Texas
2008 - present

Matkin-Hoover Engineering & Surveying
Assistant Project Manager
Boerne, Texas
2004 - 2008



Corder Norris, EIT

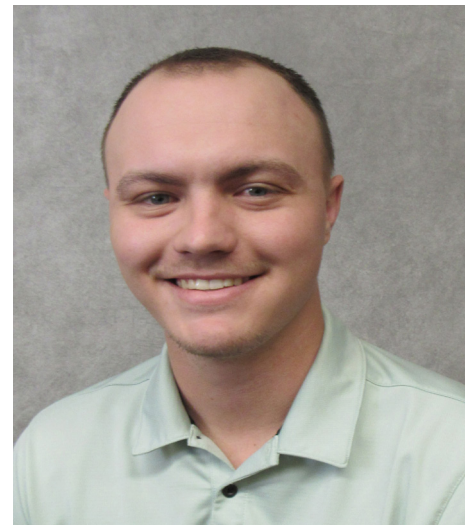
Design

PROFESSIONAL EXPERIENCE

Mr. Norris has worked on a variety of civil and municipal projects in Texas. His experience includes paving and drainage, pond design, site development, client coordination and cost estimation. Additionally, he is experienced with utility design, including water distribution, wastewater and site utilities. He has provided environmental support including assisting with development of stormwater pollution prevention plans and site inspections to identify possible contaminants on construction sites.

PROJECT EXPERIENCE

- Downtown Paving Project, City of Eden
- E.N. 10th Street Roadway Rehabilitation, City of Abilene
- Mills County Pump Station, Corix Utilities
- Parking and Paving Improvements, Caldwell ISD
- Mill Ridge Estates Subdivision
- New Batting Cages, Hardin Simmons University
- Industrial Park Renovations, City of Eden
- Hardison Boat and RV Storage
- Annexed Properties Utility Improvements, City of Seminole
- Stormwater Pollution Prevention Plan- Sierra Sunset Apartment Additions
- Public Works Building, City of Blyde
- Carter Asset Management Office Building, Parkhill
- Double Ott Pump Station, Corix Utilities
- US 190 Waterline Relocation, TxDOT/Lometa



EDUCATION

Bachelor of Science, Civil Engineering, Angelo State University, 2021

REGISTRATIONS

Engineer in Training

PROFESSIONAL/CIVIC ORGANIZATIONS

American Society of Civil Engineers
Angelo State Ramgeiners

PROFESSIONAL ENDEAVORS

Enprotec / Hibbs & Todd, Inc.
Staff Engineer
Abilene, Texas
2022 - present

Harding Earthworks
Project Engineer Intern
San Angelo, Texas
2020 - 2022



Scott Yungblut, PE

Geotechnical Engineering and Materials Testing

PROFESSIONAL EXPERIENCE

Mr. Yungblut has 27 years of experience in performing engineering analysis and design on geotechnical and construction materials testing projects throughout Texas, Louisiana, Arkansas and Oklahoma. He supervises and manages eHT's soil and materials testing laboratory responsibilities including proposal preparation, field investigation, field and laboratory analysis, report preparation and construction quality assurance and quality control.

The eHT laboratory staff utilizes state-of-the-art equipment and instrumentation. eHT procedures and methodologies conform to federal and/or state standards such as American Standards and Testing Methods (ASTM), TxDOT and American Concrete Institute (ACI).

PROJECT EXPERIENCE

Geotechnical Expertise

Mr. Yungblut's geotechnical expertise includes:

- Subsurface Exploration
- Soil Property Evaluations
- Shallow and Deep Foundation Design Recommendations
- Foundations on Expansive Soils
- Pavement Design and Evaluation
- Roadway and Parking Lot Upgrades
- Airfield Pavements

Notable Civil Projects

- Abilene ISD: Various new schools and athletic facilities
- City of Midland Monopole Tower Sites
- Lamesa High School Improvements
- Hampton Inn & Suites, Lubbock
- Abilene Fire Training Academy
- Burger King/Popeyes, Midland
- Chisolm Truck Stop, Lubbock
- Hendrick Home for Children, Main Building, Abilene
- Avis Lube 126, Midland



EDUCATION

Bachelor of Science, Civil Engineering
University of Texas at Arlington, 1993

REGISTRATIONS

Registered Professional Engineer –
Texas #85640, 1999

CERTIFICATIONS/EDUCATION

Concrete Evaluation and Repair I & II,
2011

Retaining Wall Design, 2010

Shrink Swell Soils, Texas A&M

Forensics Engineering Conference,
2007

Texas Accessibility Academy, 2005

TxDOT HotMix (HMACP) Inspector,
2003

ParSales Training, 1996

Dale Carnegie Leadership Course,
1995

PROFESSIONAL ENDEAVORS

Enprotec / Hibbs & Todd, Inc.
Vice President
Abilene, Texas
2000 - present

Giles Engineering Associates
Project Engineer
Dallas, Texas
1997 - 2000

Professional Endeavors (Cont.)

Professional Service Industries, Inc.
Project Manager, Department
Manager, Technician, Geotechnical
Services
Dallas, Texas
1994 - 1997



Phillip Bullard

Construction Management

PROFESSIONAL EXPERIENCE

Mr. Bullard has over 30 years of experience in construction management and inspection. He is hard-working, conscientious, and responsible with effective problem solving and analytical skills. He is skilled in planning and execution of projects during time critical environments. He has extensive knowledge in directing, coordinating and exercising authority for planning, organization, control and completion of projects as well as managing employee talents. He has conducted critical inspections on projects and provided solutions for related issues. He is skilled at solving customer relations issues by seeking first to understand and then to be understood. He is effectively able to communicate with customers, contractors and management to meet customer needs while still maintaining compliance with applicable codes. He can approach projects with a contractor's understanding of how to complete a project as well as an understanding of the engineering concepts of the project.

Mr. Bullard serves as a Resident Project Representative for eHT. In this capacity, he inspects materials for uniformity to the approved submittal and the incorporation of materials and labor into projects. Mr. Bullard witnesses all testing, such as: hydrostatic water line and bacteria tests, air test sanitary sewer tests, vacuum manhole tests, tapping sleeve air tests, soil/base densities and asphalt core samples for testing. He coordinates information between contractors, owners, engineers and utility owners. He also records installation locations and quantities for as builts and pay applications.

PROJECT EXPERIENCE

- **TxDOT Sanitary Sewer Utility Relocation, City of Breckenridge:** Installation of new sanitary sewer main line, sewer services, manholes, asphalt repair and traffic control.
- **TWDB DWSRF Contract D - Water System SCADA Improvements, City of Sweetwater:** SCADA package that includes new and refurbished antennae, new radios in panel boxes with programming to allow the water wells to communicate with the booster pumps and elevated/ground storage tanks.
- **Quela Street Lift Station Replacement, City of Monahans:** Installation of a new sanitary manhole, gravity and force main, a wet well with Flyte grinder pumps, a concrete valve vault and all new electrical service and pump controls surrounded by a security fence.
- **CDBG Water Line Improvements, City of Eden:** Installation of new water mains, gate valves, fire hydrants, water services and asphalt repair.
- **Hogan/Wadley Elevated Storage Tank Improvements, City of Midland:** Installation of new interior piping, flow control meter, flow meter and inside new concrete vaults. New SCADA, programming, radio, and controls to be centrally operated from the Water Purification Plant.
- **TWDB DWSRF Contract D - Water Line Replacement, City of Sweetwater:** Installation of new water mains, water services, fire hydrants, gate valves and asphalt repair.
- **Sealcoat Project, City of Seminole:** Installation of 185,000 square yards of street seal coating.



EDUCATION

Bachelor of Science, Civil Engineering, Texas Tech University, 1993

Associate of Science, Pre-Engineering, South Plains College, 1990

CERTIFICATIONS/EDUCATION

Hot Mix Asphalt Level 1B, 2014

Nuclear Density Gauge Certification, 2014

Water Distribution Operator Class C, 2013, WD0011340

Class A Commercial Drivers License, 2011

Wastewater Collection Operator 1, 2011, WW0044811

Water Utilities Safety Certification, 2011

Cross Connection Control & Pumps Certification, 2009

Confined Space Entry Certification, 2008

PROFESSIONAL ENDEAVORS

Enprotec / Hibbs & Todd, Inc.
Construction Inspector
Abilene, Texas
2017 - present

PSI Groundworks, Inc.
Contractor/Owner
Lubbock, Texas
2015 - 2017

City of Lubbock
Senior Construction Inspector
Lubbock, Texas
2011 - 2015



Riley Griffith, RPLS

Surveying

PROFESSIONAL EXPERIENCE

Mr. Griffith is the Survey Department Manager of Enprotec / Hibbs & Todd, Inc., and has 20 years experience in the field of land surveying. He has worked on residential and commercial land development projects; ALTA surveys; wind farms; oil and gas pipelines; oil field projects; water and sewer projects; a flood control dam; TxDOT ROW projects; Patent Surveys for the GLO; residential, commercial, and farm and ranch surveys. He has experience with pipeline route surveys, construction staking and ALTA surveys across West Texas, including boundary and topographic surveys; elevation certificates; ground bed surveys in Texas and Oklahoma; subdivision platting; and, oil well location staking.

PROJECT EXPERIENCE

- Airport Lift Station Improvements, City of Midland
- Water Distribution System, City of Midland
- Wadley Elevated Storage Tank Improvements, City of Midland
- Northeast Water System Improvements, City of Midland
- Wadley Boosting Station, City of Midland
- Central Business District Street Repair, City of Abilene
- Convention Center Renovations, City of Abilene
- Fire Training Facility, City of Abilene
- Memorial Hospital District, City of Ballinger
- Hendrick South Medical Buildings
- Dyess Air Force Base Hospital Facilities, SES Construction and Fuel Services, LLC
- Stonewall County Nursing Facility
- Rehabilitation of Hospital of Abilene, Med Properties
- Fire Station #7, City of Abilene
- Abilene Law Enforcement Center, City of Abilene
- Tuscany Ridge Development
- ACU Irrigation Pump Station
- Hampton Hills Development
- Water System Improvements, City of Stamford
- Wylie ISD New Elementary School
- College Hills Boulevard Rehabilitation Project, City of San Angelo
- Hardin-Simmons University Moody Center and Behrens Auditorium
- Highway 18/36 Development, Development Corporation of Abilene



EDUCATION

Bachelor of Science, Horticulture
Texas A&M University, 1993

REGISTRATIONS

Registered Professional Land
Surveyor – Texas #4683, 2006; OK
#1662

PROFESSIONAL ENDEAVORS

Enprotec / Hibbs & Todd, Inc.
Survey Department Manager
Abilene, Texas
2017 - present

RG Surveying, Inc.
Owner
2015 - 2017

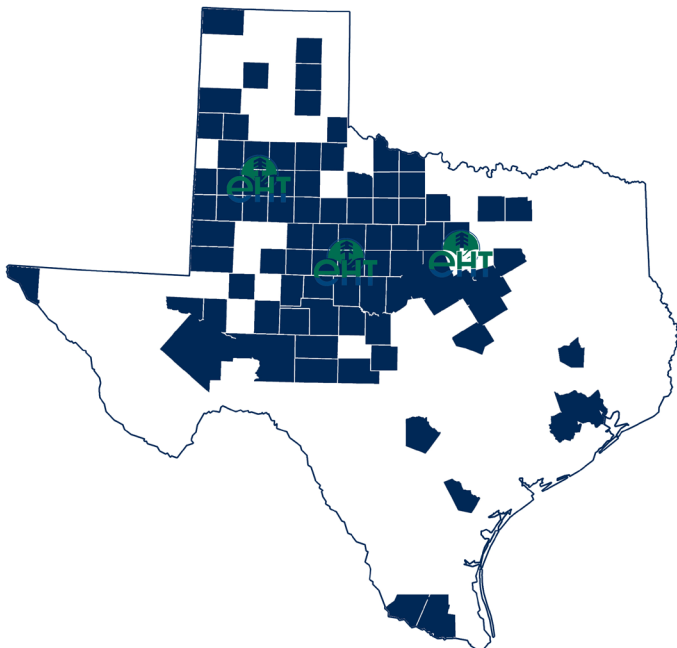
West Company of Abilene Land
Surveying
Managing RPLS
2006 - 2015



WORK PERFORMANCE

Regional Funded Projects

We have provided engineering services for a large part of Texas for TDA-funded projects. Our experience includes many successfully completed municipal infrastructure projects. The insight gained through this experience coupled with our level of service will allow us to provide a design that will meet the needs of the residents in the area. Our design will be cost effective, efficient and practical. The map below highlights areas of the State where we have provided engineering services for state or federally funded projects.



Ability to Meet Schedules



Based on current staffing, existing projects and known awards, sufficient staff will be available during the time period of this contract. In the event of workload peaks or the need for specialized disciplines, eHT has access to additional employees to meet project requirements. eHT will commit the appropriate staff resources to meet necessary schedules. eHT assures that this project will be a priority and we will have the qualified staff necessary to ensure its success.



Community Service Projects

We have provided engineering services for a large part of Texas for TDA-funded projects. Our experience includes many successfully complete

eHT regularly assists our clients with community service programs such as Supplemental Environmental Projects (SEPs) which reduce the amount of pollution reaching the environment and enhance the quality of the environment in the community. Additionally, we regularly assist our clients with community outreach and public information pertaining to projects that impact residents, as well as community impact programs such as citywide cleanup projects.



Federally Funded Construction Projects

The ability to identify and provide a funding source for public improvements is both critical and necessary in today's tight financial markets. Municipalities and counties need a consultant that not only knows how to get the funding but has an in-depth understanding of the program and agency as well. For over 30 years, eHT has been successful in helping our clients apply for and receive funding for critical public works projects.

We have experience with the following programs:

- Texas Water Development Board (TWDB)
- Texas Department of Rural Affairs (TDRA)
- USDA Rural Development (RD)
- Economic Development Administration (EDA)
- North American Development Bank (NADBank)
- South Texas Development Council (STDC)
- Texas Department of Transportation (TxDOT)
- Texas Parks and Wildlife Department (TPWD)



Cost Control

Cost control is achieved by:

- 1) close coordination with the client for input and to ensure the client's needs are being accurately addressed;
- 2) project cost estimates produced by experienced professionals; and,
- 3) attention to detail in preparation of construction



Our “commitment” to cost control is best illustrated with our water / wastewater treatment projects.

New Treatment Plants. Typically, new treatment plants are constructed on vacant sites with little or no “unknowns”. Our projects under construction are 2% below project cost estimates, with a combined Change Order amount of less than 0.2% of the construction contract amounts.

Plant Renovations and Expansions. These type projects have a greater degree of unknowns than “new” projects. These “unknowns” impact not only cost estimates developed for the project, but Change Orders during construction. Our emphasis on developing accurate cost estimates during the planning phase resulted in construction contracts approximately 1.5% less than presented in the estimates.



Labor Resources

eHT can be supplemented and supported by other professionals within the company to handle peaks and illness. We do not anticipate substantial attrition. We have a very stable and cohesive group of employees. In the event that the Principal-in-Charge or Project Manager are not available during the performance period, their responsibilities will be assumed by other officers of eHT.

eHT is prepared to increase staff as necessary to complete projects to the satisfaction and expectations of the client. This is a high priority project for our company and we will not accept additional projects that could adversely affect our ability to meet the demands of this project.



Quality of Work

eHT has managed more TDA-funded projects than most engineering firms in the state. As such, we have a vast array of experience designing and managing all types of water, wastewater and infrastructure improvement projects.

Project Approach

Agency Involvement. Our engineers will work closely with client representatives during the entire project. Clear communication and close coordination during the project will be critical for its success. There are several methods for establishing strong communication including using established communications procedures, specific TxCDBG protocol and a Strategic Decision Group.

Strategic Decision Group. eHT has informally implemented a Strategic Decision Group on each of our TDA-funded projects. The Client, Grant Consultant and Engineer have worked together to keep the projects free of “snags” and on target. Construction firm principals will be added at the appropriate time. This decision-making group will anticipate “snags” and inefficiencies in the project and resolve any major problems that may arise. This will help avoid long periods of downtime that often result because of lengthy negotiations and ineffective decision-making. This group’s purpose is to keep the project on target.

Stakeholder Input. We advocate incorporating local input from the Client on important project decisions and options. Our experience indicates this level of communication and helps to provide a project that will meet the local needs. We feel Client leadership helps to shape the outcome of the project.

We accomplish this by:

- Providing frequent technical briefings regarding the details of the project.
- Providing field tours for Client representatives to view proposed equipment and processes.
- Ensuring critical project decisions are made by the Client and implemented by the design team.

As your consulting partner, the first step will be to meet with your staff and review the objectives for your project. A preliminary engineering report (PER) will be prepared to evaluate existing conditions, alternatives and associated costs.

The Client’s needs and desires must be integrated into the project from the start. Input concerning functional issues during design and construction phases will result in a more “user-friendly” system. Our staff will maintain constant communication, focusing on sensitive issues and potential roadblocks to success.

Task 1.0: Preliminary Engineering Report

- Consult with the Client to determine specific needs and requirements.
- Prepare a preliminary engineering study and report on the project in sufficient detail to indicate problems involved and the alternate solutions available to the Client, to include schematic layouts and sketches, general cost projection for the Project and a schedule to set forth the Engineer’s recommendations.
- Determine whether or not the project requires acquisition of property. Make any necessary surveys of existing right-of-way, topography, utilities, or other field data required for proper design of the project.



Provide consultation and advise as to the necessity of the Client providing or obtaining other services such as auger borings, core borings, soil tests, or other subsurface explorations; laboratory testing and inspecting of samples or materials; other special consultations; and act as the Client's representative in connection with any such services.

D. Determine whether or not the project requires acquisition of property and if applicable furnish to the locality: Legal Description of Parcels to be acquired; Map showing entire tract with designation of part to be acquired.

Task 2.0: Design Plans and Specifications

A. On the basis of the approved preliminary design documents and preliminary engineering findings, we prepare detailed construction drawings and specifications for the Project.

B. Furnish engineering data that will assist in the preparation of the required documents to secure approval of such governmental authorities as have jurisdiction over design criteria applicable to the Project for the Client. Special considerations include obtaining approval of plans and specifications by the Texas Commission on Environmental Quality (TCEQ), Austin, Texas.

C. Advise the Client of any adjustment to the cost projection for the Project caused by changes in scope, design requirements, or construction costs and furnish a revised cost projection for the Project based on the completed drawings and specifications.

Task 3.0: Bid Administration

A. Prepare Bid Packet/Contract Documents.

B. Place advertisement/solicitation (advertised in newspaper of general circulation for two consecutive weeks at minimum).

C. Issue addenda for any necessary clarification of bid documents including incorporation of any wage rate modifications (if applicable).

D. Open bids (bid opening to be held at least two weeks from publication date of first advertisement).

E. Tabulate bids (include completeness and eligibility screening).

F. Announce lowest and best bid, if applicable (at bid opening). If required, issue a rejection of all bids and re-advertise bids.

G. Conduct construction Contractor eligibility verification.

H. Approve contract award by local governing body.

Task 4.0: Construction Phase - Field Testing and Inspection

A. Direct and hold a pre-construction conference with Client representatives, Contractor and Engineer.

B. Issue Notice to Proceed to construction to Contractor.

C. Establish Progress Payment Schedule and construction for Contractor's submittal of cost estimates.

D. Process and submit Change Orders.

E. Perform site visits and observations (by Project Engineer).

F. Check samples, catalog data, shop drawings, laboratory and mill tests of materials and equipment and other data which the Contractor is required to submit, only for the conformance with the design concept of the Project and compliance with the information given by the plans, specifications and contract documents.

G. Based on the Consultant's on-site observations as an experienced and qualified design professional and on the Consultant's review of the Contractor's Applications for Payment, determine the amount owed to the Contractor in such amounts.

H. Prepare Certificate of Construction Completion.

I. Prepare resolution for consideration by the locality for acceptance of the completed Project.

Task 5.0: Closeout Phase

A. Conduct, in company with Client representative(s), a final inspection of the Project for conformance with the design concept of the Project, and compliance with the plans, specifications, and contract documents, and recommend in writing, final payment to the Contractor.

B. Make an inspection of the Project prior to expiration of the warranty period and report observed discrepancies under warranty provided by the construction contract.

C. Furnish the Client a set of record prints of drawings and addendum drawings showing those changes made during the construction period, based upon the marked up prints, drawing and other data furnished by the Contractor which the Consultant considers to be significant.

Deliverables

eHT will provide plans, specifications and executed documents as determined by the Client, but typically include: Two sets of final plans and specifications during the bid process; Three sets of executed contract documents; and, One set of drawings of record.

eHT follows the standard project implementation schedule for TDA-funded projects including specific milestone dates set forth by the funding agency.



INSURANCE

The firm maintains insurance coverage in amounts appropriate to its workload and low claims history. Included in our current policies are coverages for commercial general liability, professional liability, automobile liability, as well as workers compensation.



CERTIFICATE OF LIABILITY INSURANCE

DATE (MM/DD/YYYY)
3/29/2022

THIS CERTIFICATE IS ISSUED AS A MATTER OF INFORMATION ONLY AND CONFERS NO RIGHTS UPON THE CERTIFICATE HOLDER. THIS CERTIFICATE DOES NOT AFFIRMATIVELY OR NEGATIVELY AMEND, EXTEND OR ALTER THE COVERAGE AFFORDED BY THE POLICIES BELOW. THIS CERTIFICATE OF INSURANCE DOES NOT CONSTITUTE A CONTRACT BETWEEN THE ISSUING INSURER(S), AUTHORIZED REPRESENTATIVE OR PRODUCER, AND THE CERTIFICATE HOLDER.

IMPORTANT: If the certificate holder is an ADDITIONAL INSURED, the policy(ies) must have ADDITIONAL INSURED provisions or be endorsed. If SUBROGATION IS WAIVED, subject to the terms and conditions of the policy, certain policies may require an endorsement. A statement on this certificate does not confer rights to the certificate holder in lieu of such endorsement(s).

PRODUCER Marsh & McLennan Agency, LLC 8144 Walnut Hill Lane, 16th Fl Dallas TX 75231		CONTACT NAME: Jacquie Moline PHONE (A/C, No, Ext): 972-770-1454 E-MAIL ADDRESS: jacquie.moline@marshmma.com		FAX (A/C, No): 212-701-1134	
INSURED Enprotec/Hibbs & Todd, Inc. 402 Cedar St. Abilene TX 79601		ENPROHIB		INSURER(S) AFFORDING COVERAGE	
		INSURER A: Texas Mutual Insurance Company		NAIC # 22945	
		INSURER B: Continental Casualty Company		20443	
		INSURER C: Continental Casualty Company		20443	
		INSURER D: Continental Insurance Company		35289	
		INSURER E:			
		INSURER F:			

COVERAGES **CERTIFICATE NUMBER:** 1913095697 **REVISION NUMBER:**

THIS IS TO CERTIFY THAT THE POLICIES OF INSURANCE LISTED BELOW HAVE BEEN ISSUED TO THE INSURED NAMED ABOVE FOR THE POLICY PERIOD INDICATED. NOTWITHSTANDING ANY REQUIREMENT, TERM OR CONDITION OF ANY CONTRACT OR OTHER DOCUMENT WITH RESPECT TO WHICH THIS CERTIFICATE MAY BE ISSUED OR MAY PERTAIN, THE INSURANCE AFFORDED BY THE POLICIES DESCRIBED HEREIN IS SUBJECT TO ALL THE TERMS, EXCLUSIONS AND CONDITIONS OF SUCH POLICIES. LIMITS SHOWN MAY HAVE BEEN REDUCED BY PAID CLAIMS.

INSR LTR	TYPE OF INSURANCE	ADDL INSD	SUBR WVD	POLICY NUMBER	POLICY EFF (MM/DD/YYYY)	POLICY EXP (MM/DD/YYYY)	LIMITS
C	<input checked="" type="checkbox"/> COMMERCIAL GENERAL LIABILITY CLAIMS-MADE <input checked="" type="checkbox"/> OCCUR GEN'L AGGREGATE LIMIT APPLIES PER: POLICY <input checked="" type="checkbox"/> PRO-JECT <input type="checkbox"/> LOC OTHER:			6076387644	4/2/2022	4/2/2023	EACH OCCURRENCE \$ 1,000,000 DAMAGE TO RENTED PREMISES (Ea occurrence) \$ 1,000,000 MED EXP (Any one person) \$ 15,000 PERSONAL & ADV INJURY \$ 1,000,000 GENERAL AGGREGATE \$ 2,000,000 PRODUCTS - COMP/OP AGG \$ 2,000,000 \$
D	<input checked="" type="checkbox"/> AUTOMOBILE LIABILITY <input checked="" type="checkbox"/> ANY AUTO <input type="checkbox"/> OWNED AUTOS ONLY <input type="checkbox"/> HIRER AUTOS ONLY <input type="checkbox"/> SCHEDULED AUTOS NON-OWNED <input type="checkbox"/> AUTOS ONLY			6076387613	4/2/2022	4/2/2023	COMBINED SINGLE LIMIT (Ea accident) \$ 1,000,000 BODILY INJURY (Per person) \$ BODILY INJURY (Per accident) \$ PROPERTY DAMAGE (Per accident) \$ \$
D	<input checked="" type="checkbox"/> UMBRELLA LIAB <input checked="" type="checkbox"/> EXCESS LIAB DED <input checked="" type="checkbox"/> RETENTION \$ 10,000			6076387630	4/2/2022	4/2/2023	EACH OCCURRENCE \$ 10,000,000 AGGREGATE \$ 10,000,000 \$
A	<input checked="" type="checkbox"/> WORKERS COMPENSATION AND EMPLOYERS' LIABILITY ANY PROPRIETOR/PARTNER/EXECUTIVE OFFICER/MEMBER EXCLUDED? (Mandatory in NH) If yes, describe under DESCRIPTION OF OPERATIONS below		N/A	0001141768	4/2/2022	4/2/2023	X PER STATUTE E.L. EACH ACCIDENT \$ 1,000,000 E.L. DISEASE - EA EMPLOYEE \$ 1,000,000 E.L. DISEASE - POLICY LIMIT \$ 1,000,000
B	<input checked="" type="checkbox"/> Professional & Pollution Liability			AEH591899237	4/2/2022	4/2/2023	Each Claim \$5,000,000 Aggregate \$5,000,000 SIR - Per Claim \$100,000

DESCRIPTION OF OPERATIONS / LOCATIONS / VEHICLES (ACORD 101, Additional Remarks Schedule, may be attached if more space is required)
 Cyber Liability, Policy Number: ESK0039440637, Carrier: Underwritten by certain underwriters at Lloyd's and other insurers (4/2/22-4/2/23)
 \$1,000,000 Limit of Liability - each claim
 \$1,000,000 Limit of Liability - aggregate
 \$5,000 - Retention - each claim
 Additional Insured form #CNA74858 edition 01/15 applies to the General Liability policy.
 Waiver of subrogation form #CNA74858 edition 01/15 applies to the General Liability policy.
 Primary & Non-Contributory General Liability form #CNA74858 edition 01/15.
 See Attached...

CERTIFICATE HOLDER	CANCELLATION
For Information Only	SHOULD ANY OF THE ABOVE DESCRIBED POLICIES BE CANCELLED BEFORE THE EXPIRATION DATE THEREOF, NOTICE WILL BE DELIVERED IN ACCORDANCE WITH THE POLICY PROVISIONS. AUTHORIZED REPRESENTATIVE <i>sqf</i>

© 1988-2015 ACORD CORPORATION. All rights reserved.

ACORD 25 (2016/03)

The ACORD name and logo are registered marks of ACORD



REQUEST FOR QUALIFICATIONS FOR ENGINEERING SERVICES
2022 TxCDBG DOWNTOWN REVITALIZATION PROGRAM FUND
FEBRUARY 2, 2023



AFFIRMATIVE ACTION

It is the policy of Enprotec / Hibbs & Todd, Inc. to afford equal opportunity of employment to all individuals regardless of race, color, religion, sex, or national origin. The Company will take affirmative action to ensure that it will:

- 1) Recruit, hire and promote all job classifications without regard to race, color, religion, sex, or national origin.
- 2) Base decisions on employment so as to further the principle of equal employment opportunity.
- 3) Ensure that promotion decisions are in accord with principles of equal employment opportunities.

The successful achievement of nondiscriminatory employment programs requires maximum cooperation between management and employees. In fulfilling its part in this cooperative effort, management is obliged to lead the way by establishing and implementing affirmative procedures and practices which will insure objectives, namely, equitable employment opportunity for all.

I certify that the officers of this company will direct the establishment of and monitor the implementation of personnel procedures to guide our affirmative action program.



Scott F. Hibbs, PE
President





SYSTEM FOR AWARD MANAGEMENT

Last updated by Jessica Long on Dec 07, 2022 at 09:38 AM

ENPROTEC / HIBBS & TODD, INC.



ENPROTEC / HIBBS & TODD, INC.

Unique Entity ID DLNUVLRUVW17	CAGE / NCAGE 0HLV8	Purpose of Registration All Awards
Registration Status Active Registration	Expiration Date Dec 7, 2023	
Physical Address 402 Cedar ST STE Lower Abilene, Texas 79601-5734 United States	Mailing Address P.O. Box 3097 Abilene, Texas 79604-3097 United States	

Business Information

Doing Business as Geotec Labs	Division Name (blank)	Division Number (blank)
Congressional District Texas 19	State / Country of Incorporation Texas / United States	URL http://www.e-ht.com

Registration Dates

Activation Date Dec 9, 2022	Submission Date Dec 7, 2022	Initial Registration Date Apr 12, 2002
---------------------------------------	---------------------------------------	--

Entity Dates

Entity Start Date Jan 1, 1989	Fiscal Year End Close Date Dec 31
---	---

Immediate Owner

CAGE (blank)	Legal Business Name (blank)
------------------------	---------------------------------------

Highest Level Owner

CAGE (blank)	Legal Business Name (blank)
------------------------	---------------------------------------

Executive Compensation

In your business or organization's preceding completed fiscal year, did your business or organization (the legal entity to which this specific SAM record, represented by a Unique Entity ID, belongs) receive both of the following: 1. 80 percent or more of your annual gross revenues in U.S. federal contracts, subcontracts, loans, grants, subgrants, and/or cooperative agreements and 2. \$25,000,000 or more in annual gross revenues from U.S. federal contracts, subcontracts, loans, grants, subgrants, and/or cooperative agreements?

No

Does the public have access to information about the compensation of the senior executives in your business or organization (the legal entity to which this specific SAM record, represented by a Unique Entity ID, belongs) through periodic reports filed under section 13(a) or 15(d) of the Securities Exchange Act of 1934 (15 U.S.C. 78m(a), 78o(d)) or section 6104 of the Internal Revenue Code of 1986?

Not Selected

Proceedings Questions

Is your business or organization, as represented by the Unique Entity ID on this entity registration, responding to a Federal procurement opportunity that contains the provision at FAR 52.209-7, subject to the clause in FAR 52.209-9 in a current Federal contract, or applying for a Federal grant opportunity which contains the award term and condition described in 2 C.F.R. 200 Appendix XII?

No

Does your business or organization, as represented by the Unique Entity ID on this specific SAM record, have current active Federal contracts and/or grants with total value (including any exercised/unexercised options) greater than \$10,000,000?

Not Selected

Within the last five years, had the business or organization (represented by the Unique Entity ID on this specific SAM record) and/or any of its principals, in connection with the award to or performance by the business or organization of a Federal contract or grant, been the subject of a Federal or State (1) criminal proceeding resulting in a conviction or other acknowledgment of fault; (2) civil proceeding resulting in a finding of fault with a monetary fine, penalty, reimbursement, restitution, and/or damages greater than \$5,000, or other acknowledgment of fault; and/or (3) administrative proceeding resulting in a finding of fault with either a monetary fine or penalty greater than \$5,000 or reimbursement, restitution, or damages greater than \$100,000, or other acknowledgment of fault?

Not Selected

Exclusion Summary

<https://sam.gov/entity/DLNUVLRUVW17/coreData?status=Active>

Page 1 of 4



TDA TXCDBG CERTIFICATION



TEXAS DEPARTMENT OF AGRICULTURE
COMMISSIONER SID MILLER

Joe Mangrem

This is to certify that the above named individual has completed the
Texas Department of Agriculture's
Texas Community Development Block Grant Implementation
Exam And is certified to Administer TxCDBG contracts for 2021.

Awarded on February 10, 2021

Suzanne Barnard Director for Community Development Block Grant Program

Joe Mangrem, PE, is a Project Manager with eHT.



Certification Regarding Lobbying

(To be submitted with each bid or offer exceeding \$100,000)

The undersigned certifies, to the best of his or her knowledge and belief, that:

- (a) No Federal appropriated funds have been paid or will be paid, by or on behalf of the undersigned, to any person for influencing or attempting to influence an officer or employee of an agency, a Member of Congress, an officer or employee of Congress, or an employee of a Member of Congress in connection with the awarding of any Federal contract, the making of any Federal grant, the making of any Federal loan, the entering into of any cooperative agreement, and the extension, continuation, renewal, amendment, or modification of any Federal contract, grant, loan, or cooperative agreement.
- (b) If any funds other than Federal appropriated funds have been paid or will be paid to any person for influencing or attempting to influence an officer or employee of any agency, a Member of Congress, an officer or employee of Congress, or an employee of a Member of Congress in connection with this Federal contract, grant, loan, or cooperative agreement, the undersigned shall complete and submit Standard Form-LLL, "Disclosure Form to Report Lobbying," in accordance with its instructions.
- (c) The undersigned shall require that the language paragraph 1 and 2 of this anti-lobbying certification be included in the award documents for all subawards at all tiers (including subcontracts, subgrants, and contracts under grants, loans, and cooperative agreements) and that all subrecipients shall certify and disclose accordingly.

This certification is a material representation of fact upon which reliance was placed when this transaction was made or entered into. Submission of this certification is a prerequisite for making or entering into this transaction imposed by 31, U.S.C. § 1352 (as amended by the Lobbying Disclosure Act of 1995).

The Contractor, Enprotec / Hibbs & Todd, Inc., certifies or affirms the truthfulness and accuracy of each statement of its certification and disclosure, if any. In addition, the Contractor understands and agrees that the provisions of 31 U.S.C. § 3801 et seq., apply to this certification and disclosure, if any.

Sage Diller

Signature of Contractor's Authorized Official

Sage Diller, PE, Associate Vice President

Printed Name and Title of Contractor's Authorized Official

January 19, 2023

Date



CONFLICT OF INTEREST QUESTIONNAIRE
For vendor doing business with local governmental entity

FORM CIQ

This questionnaire reflects changes made to the law by H.B. 23, 84th Leg., Regular Session.

This questionnaire is being filed in accordance with Chapter 176, Local Government Code, by a vendor who has a business relationship as defined by Section 176.001(1-a) with a local governmental entity and the vendor meets requirements under Section 176.006(a).

By law this questionnaire must be filed with the records administrator of the local governmental entity not later than the 7th business day after the date the vendor becomes aware of facts that require the statement to be filed. See Section 176.006(a-1), Local Government Code.

A vendor commits an offense if the vendor knowingly violates Section 176.006, Local Government Code. An offense under this section is a misdemeanor.

OFFICE USE ONLY

Date Received

1 Name of vendor who has a business relationship with local governmental entity.

Enprotec / Hibbs & Todd, Inc.

2 **Check this box if you are filing an update to a previously filed questionnaire.** (The law requires that you file an updated completed questionnaire with the appropriate filing authority not later than the 7th business day after the date on which you became aware that the originally filed questionnaire was incomplete or inaccurate.)

3 Name of local government officer about whom the information is being disclosed.

 Name of Officer

4 Describe each employment or other business relationship with the local government officer, or a family member of the officer, as described by Section 176.003(a)(2)(A). Also describe any family relationship with the local government officer. Complete subparts A and B for each employment or business relationship described. Attach additional pages to this Form CIQ as necessary.

A. Is the local government officer or a family member of the officer receiving or likely to receive taxable income, other than investment income, from the vendor?

Yes No N/A

B. Is the vendor receiving or likely to receive taxable income, other than investment income, from or at the direction of the local government officer or a family member of the officer AND the taxable income is not received from the local governmental entity?

Yes No N/A

5 Describe each employment or business relationship that the vendor named in Section 1 maintains with a corporation or other business entity with respect to which the local government officer serves as an officer or director, or holds an ownership interest of one percent or more.

6 Check this box if the vendor has given the local government officer or a family member of the officer one or more gifts as described in Section 176.003(a)(2)(B), excluding gifts described in Section 176.003(a-1).

7 Sage Dilh
 Signature of vendor doing business with the governmental entity

January 19, 2023

 Date

