



# Breckenridge 2024 - 2040 Park Plan



## INTRODUCTION

Breckenridge, the county seat of Stephens County, is located at the intersection of U.S. highways 180 and 183, four miles east of Hubbard Creek Reservoir in west central Stephens County. The City originated about 1854 as Picketville, named either for the post and clay structure of the early homes or for early rancher Bill Picket. When the county was organized in 1876, the town was made county seat and renamed Breckenridge after John C. Breckinridge, United States senator from Kentucky and vice president, although the spelling of the name was altered.

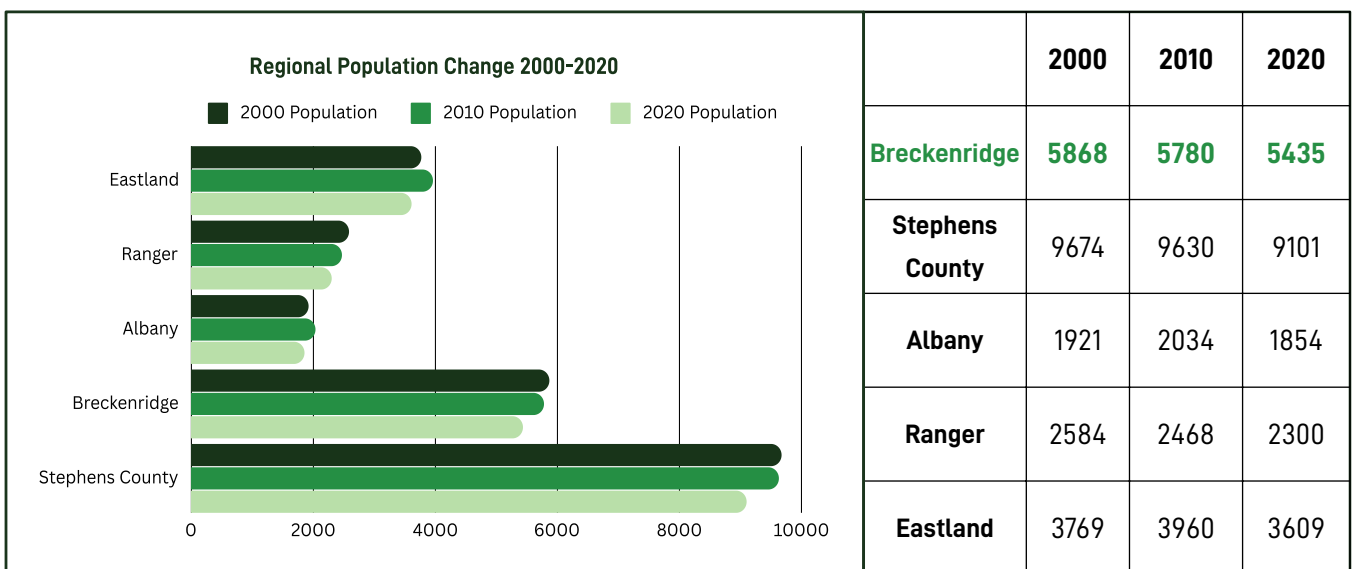
Breckenridge served as the court and local trading center for several quiet decades until 1916–17, when oil discoveries at Ranger occurred. Drilling started at the Breckenridge field in 1918, but the boom did not really get underway until 1920, when the town saw the arrival of thousands of workers and speculators. From a population estimated at 1,500 in January 1920 the town grew to 30,000 within a year. By July the

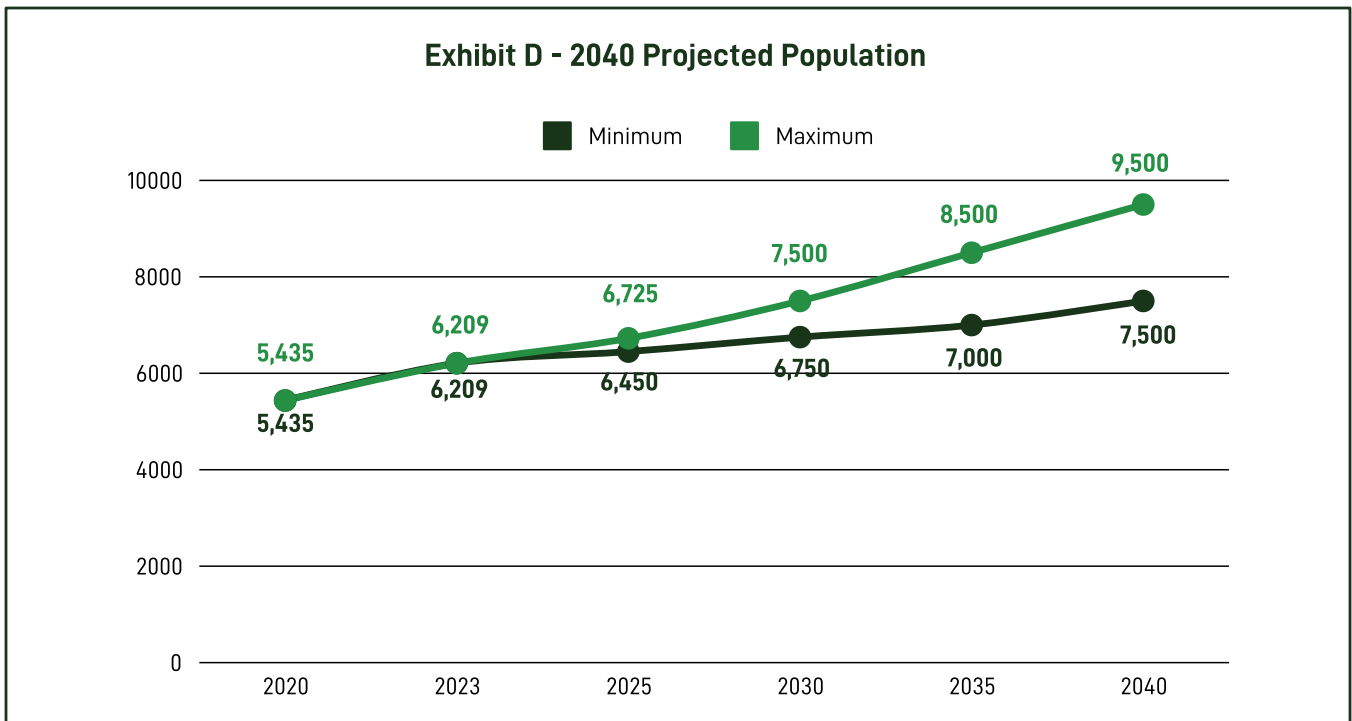
town acquired its first railroad, the Wichita Falls, Ranger and Fort Worth, which was soon joined by the Cisco and Northeastern. After three exciting years, oil production slowed, and the town lost much of its population, although it held its place as a commercial and oil production center. In the 1980s Breckenridge was still a center for petroleum-related industries and was a retail and shipping center for the county. The City is the home of the Swenson Memorial Museum and the Breckenridge Aviation Museum. Just northwest of the city is Hubbard Creek Reservoir, Lake Daniel is to the south, and Possum Kingdom Lake is to the east in Palo Pinto County.<sup>1</sup>

As mentioned in the population study, Breckenridge had a population of 5,868 in 2000, 5,780 in 2010, and 5,435 in 2020. Current estimates show the City with 6,209 persons. It is likely that the City will start to see population increases during the planning period, due to growth in the region and State.

<sup>1</sup> Texas State Historical Association-The Handbook of Texas Online

## CENSUS DATA & POPULATION





## REGIONAL RECREATION & OPEN SPACE

The City of Breckenridge stands as a gateway to a plethora of recreational adventures waiting to be explored. Surrounded by picturesque landscapes, the area boasts a myriad of outdoor opportunities, enticing both locals and visitors alike. With its proximity to sprawling state parks such as Possum Kingdom State Park and the soon to open Palo Pinto Mountains State Park, outdoor enthusiasts can immerse themselves in the beauty of nature through activities like hiking, camping, and bird watching. Moreover, recreational opportunities extend to its neighboring lakes, including Lake Daniel, Hubbard Creek Reservoir, and Possum Kingdom Lake, where fishing, boating, and water sports reign supreme.

**Possum Kingdom State Park** is a publicly-owned State of Texas facility, located approximately 35 miles northeast of the City of Breckenridge. The Park is home to many different activities. On water, you can

swim, boat, fish, ski, scuba dive and snorkel. On land, you can camp, picnic, hike, bike, geocache.



*Possum Kingdom State Park - Cody Franklin (Unsplash Photos)*

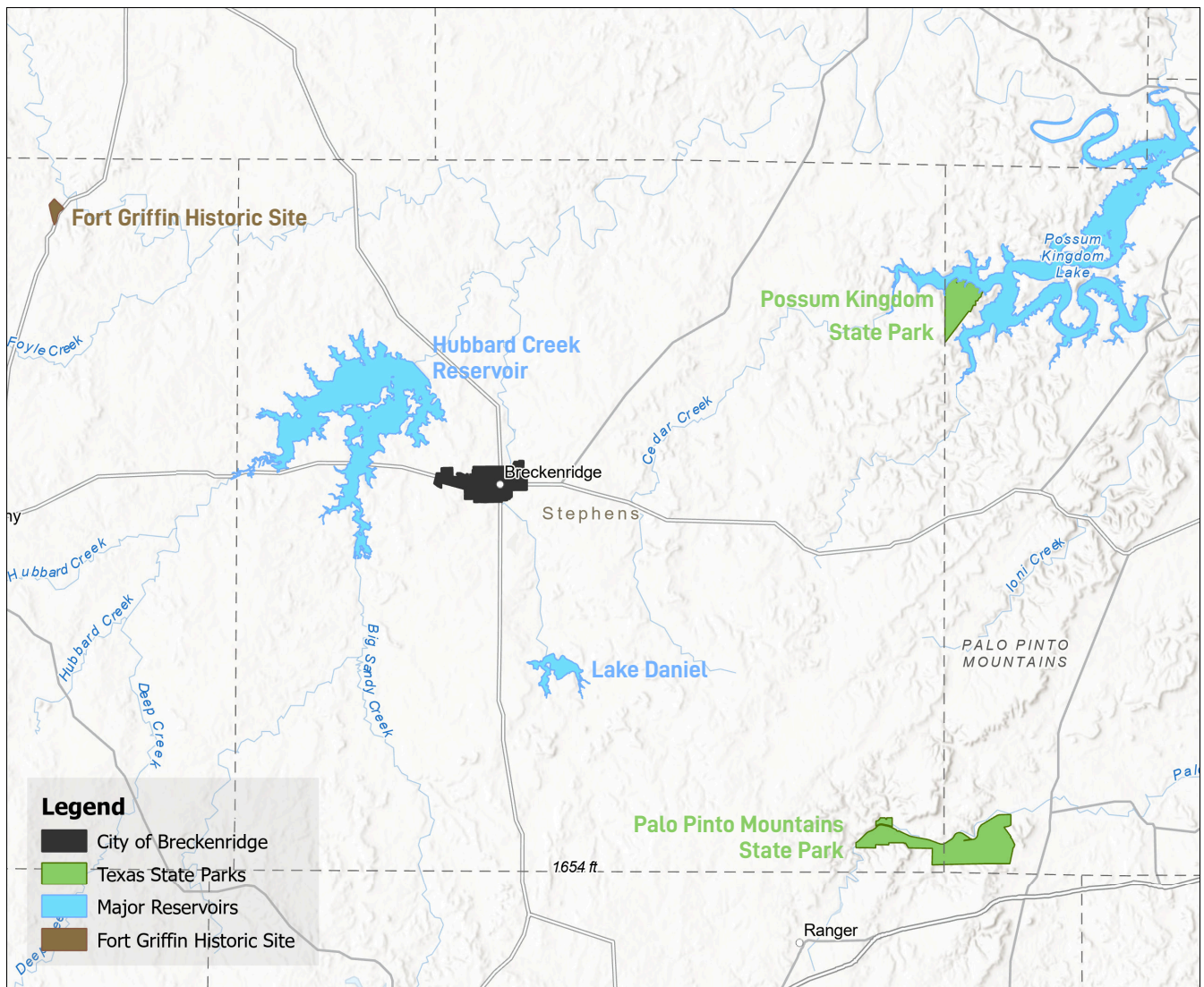
**Palo Pinto Mountains State Park** is a publicly-owned State of Texas facility, located approximately 45 miles southeast of the City of Breckenridge. While the park is not yet open, plans for the park include an extensive network of multi-use trails, water activities on Tucker Lake, and a multitude of RV, tent, and primitive camping opportunities.

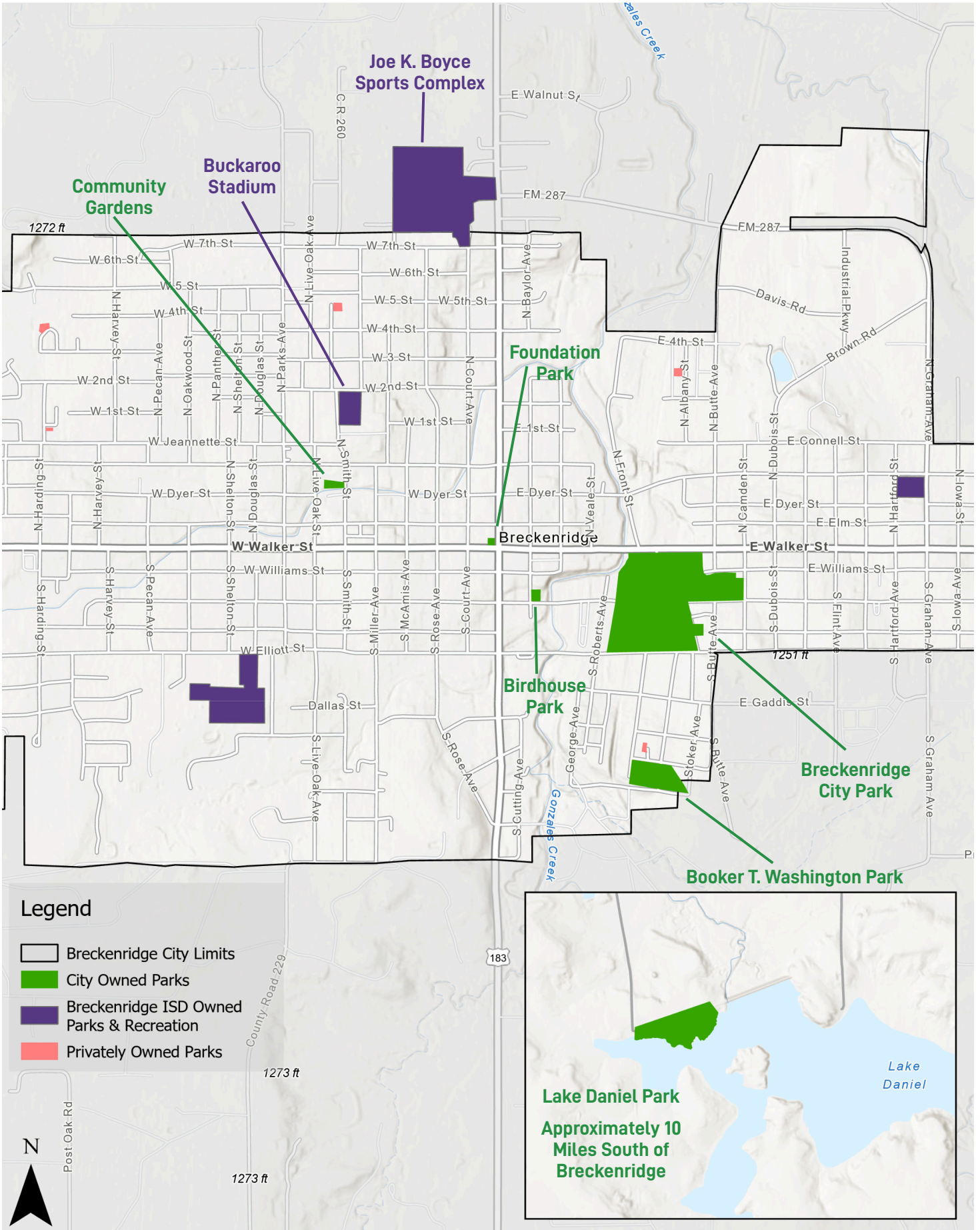
**Hubbard Creek Reservoir** is a publicly-owned State of Texas facility located approximately 5 miles west of the City of Breckenridge and is known for great fishing opportunities. When the reservoir is full, it is known for excellent white crappie and white bass fishing in Hubbard and Sandy Creeks in late fall and winter. It is also a popular lake for largemouth bass.

**Lake Daniel** is an approximately 950 acre reservoir that the City of Breckenridge has controlling authority over. Lake Daniel offers a variety of fishing cover including black willow trees, button brush, lily pads, floating-leaf pondweed, and rocky structure.

Angling opportunities are considered good for largemouth bass, catfish, and white crappie.

**Fort Griffin State Historic Site** is a publicly-owned State of Texas facility located approximately 25 miles northwest of the City of Breckenridge. Fort Griffin served as one in a line of western defensive forts from 1867 to 1881. Remnants of the fort remain today at Fort Griffin State Historic Site, which is also home to the Official State of Texas Longhorn Herd and offers camping, hiking, stargazing, and living history. Fort Griffin is a State Archaeological Landmark and listed in the National Register of Historic Places.





# EXISTING RECREATION & OPEN SPACE

## City of Breckenridge Existing Parks and Recreational Facilities

	Swimming Pool	Playground Equipment	Swing Set	Slide	Disc Golf Course	Skate Park	Walking Trail	Exercise Stations	Basketball Goals	Baseball Field	Metal Playground Equipment	Soccer Fields	Large Pavilion	Small Pavilion	Picnic Tables	Park Benches	Trashcans	BBQ Grills	Restrooms	Fountain	Turf Area	Garden Beds	Community Gathering Area	Art Mural	Primitive Camping	Boat Ramp	Birdhouses/Bird Watching
Breckenridge City Park	●	●	●	●	●	●	●	●	●	●	●	●	●	●	●	●	●	●	●				●				
Booker T. Washington Park			●	●					●	●	●			●	●	●	●						●				
Birdhouse Park																●							●				●
Foundation Park																●				●	●		●	●			
Community Garden																						●	●				
Lake Daniel Park																									●	●	●



## Breckenridge ISD Existing Parks and Recreation Facilities

	Football Stadium	Football Field/Track	Baseball Fields	Softball Fields	Batting Cages	Basketball Goals	Soccer Field	Tennis Courts	Playground Equipment	Swing Set	Monkey Bars	Slide	Jungle Gym	Covered Benches	Picnic Tables	Restrooms	Concession Stand	BBQ Grill
Buckaroo Stadium	●																	
Joe K. Boyce Sports Complex			●	●	●										●	●	●	●
North Elementary School Park (Closed)						●			●	●	●	●	●					
South Elementary School		●				●	●	●	●	●	●	●	●		●			
East Elementary School								●	●	●	●	●	●	●	●			

## Privately Owned Parks and Recreation Facilities

	Basketball Goals	Swing Set	Monkey Bars	Pull Up Bars	Balance Beam	Wooden Playground	Park Benches	Picnic Tables	Trashcans	BBQ Grills
Breckenridge Apartments Park	●									
North Albany Avenue Park	●	●	●	●	●		●			
East Power Street Park	●	●	●	●	●					
Mountain Heights Apartment Park	●	●				●	●			
North Payne Park	●	●	●	●	●		●	●	●	●

## RECREATION & OPEN SPACE ANALYSIS

### Level of Service Standards and Criteria

The level of service standards for this plan were determined based on standards set by the City of Breckenridge. These were adapted from standards set forth by the National Recreation and Park Association (NRPA). The City of Breckenridge has blended these two approaches in the development of these standards.

### Needs Assessment and Identification

The City received public input through public meetings. A Community Event was held on February 27, 2023 and an online survey (survey monkey) was conducted from March 2, 2023 through March 19, 2023. The needs assessment for this particular plan was based on comments from the meeting and survey, accepted standards and the resources currently available to the city. The approaches used by the city are accepted by the Texas Parks and Wildlife Department as legitimate needs assessment techniques. The resources available to the city include municipal parks, sports fields, and natural resource areas.



### Park Classification

The City of Breckenridge utilized the following Park Classification System to assist in the needs assessment.

Park Classification System

Type	Description
<b>Mini - Park</b>	Addresses limited, isolated or unique recreational needs. May be either active or passive but speak to a specific need rather than a population density.
<b>Neighborhood Park</b>	The foundation of any park system because it is closest to the users. The park should be centrally located, served by residential, or collector streets, but the primary access should be pedestrian in nature.
<b>Community Park</b>	Larger than neighborhood parks and serve several neighborhoods. May include areas for intense recreation activity, such as competitive sports. Should also be areas for passive recreation, such as walking.
<b>Sports Complex</b>	Consolidates heavily programmed athletic fields and associated facilities to larger and fewer sites located throughout the community.
<b>Special Use Area</b>	Specialized or single use facilities
<b>Greenway/Linear Parks</b>	Can be built along creek corridors, easements, public rights-of-way and floodplains to effectively tie all of the parks together to form a system.
<b>Natural Resource Area</b>	Environmentally sensitive lands set aside for the preservation significant natural resources, and open space.

Source: -National Recreation and Park Association (NRPA) standards

## Existing Park Facilities



**Neighborhood Parks:** The City has several neighborhood parks. These parks are typically utilized on a daily basis and improvements to these parks are considered a high priority. One of the City's long-range goals will be to establish neighborhood parks in all of the City's new subdivisions

**Sports Complex:** The City has one (1) sports complex in the park system. Joe K. Boyce Park is owned and operated by the Breckenridge ISD. The facilities include baseball and softball fields, batting cages, running, concession stand, bleachers, picnic benches, grill and restrooms.



**Community Parks:** The City of Breckenridge has one (1) Community Park within the park system. The size of these parks typically ranges from 5-5 acres. It is not likely that the City will build another park this size in the City of Breckenridge during the planning period.

**Natural Resource Areas:** The City has one natural resource area, Lake Daniel. Natural resource areas are defined as areas that protect natural habitats, promote conservation ideas, provide access to natural resources such as waterways, and provide pedestrian linkages to other community resources.



**Level of Service**

Current Level of Service - 2023 Population			
Park Type	Standard	Current Level	Deficit/Surplus
Neighborhood Parks	2.0 acres/1,000 people	1.15 acres/1,000 people	-0.85 acres
Community Parks	8.0 acres/1,000 people	5.25 acres/1,000 people	-2.75 acres
Parks System	12 acres/1,000 people	10.30 acres/1,000 people	-1.75 acres
Trails	1 mile/2,000 people	0.85 miles/2,000 people	-0.15 miles

*Source: 2023 Field Survey, Public Management, Inc.*

Future Level of Service - 2040 Population Projection			
Park Type	Standard	Current Level	Deficit/Surplus
Neighborhood Parks	2.0 acres/1,000 people	0.55 acres/1,000 people	-1.45 acres
Community Parks	8.0 acres/1,000 people	3.45 acres/1,000 people	-4.55 acres
Parks System	12 acres/1,000 people	6.75 acres/1,000 people	-5.25 acres
Trails	1 mile/2,000 people	0.10 miles/2,000 people	-0.9 miles

*Source: City of Breckenridge TxCDBG Planning Study CPC21-0522, Exhibit D*

Future Level of Service - 2040 Population Projection					
Amenity	Number	LOS (Current Pop.)	Target LOS	Current Need	Future Need (2040)
Baseball Fields	4	1 per 1,500	1 per 1,500	0	0
Softball Fields	4	1 per 1,500	1 per 1,500	0	0
Soccer Fields	4	1 per 1,500	1 per 3,000	0	0
Trails	0.85 miles	1 per 7,000	1 per 2,000	2.5 miles	4.25 miles
Indoor Rec. Center	0	NA	1 per 20,000	0	1
Outdoor Basketball Goals	14	1 per 200	1 per 3,000	0	0

*Source: City of Breckenridge TxCDBG Planning Study CPC21-0522, Exhibit D*

**RECREATION & OPEN SPACE GOALS & OBJECTIVES**

The city intends to meet its parks, recreation and open space goals and objectives through budgetary responsiveness to this plan and the active search for additional funding options, such as grants. The following prioritizes the needs previously delineated with a specific plan of action and timetable. The priorities were determined based on the city's documented needs assessment.



### Priority #1

Implement improvements to Breckenridge City Park

- Install new splash pad
- Replace outdated equipment
- Upgrade landscaping

Timetable: 2024 - 2027

Estimated Costs: \$800,000

Financial Resources: City funds, private donations, TPWD Non-Urban Outdoor Grant



### Priority #2

Implement improvements to Lake Daniel Park

- Install two boat docks
- Construct Restrooms
- Construct RV spots with water/electric hook-ups
- Install playground

Timetable: 2025 - 2030

Estimated Costs: \$1,500,000

Financial Resources: City funds, private donations, TPWD Non-Urban Outdoor Grant.



### Priority #3

Implement improvements to Booker T. Washington Park

- Replace outdated equipment
- Add small walking trail
- Add/replace park benches and picnic tables

Timetable: 2025 - 2028

Estimated Costs: \$250,000

Financial Resources: City funds, private donations, TPWD Small Communities Grant.



### Priority #4

Implement improvements to Community Gardens Park

- Replace garden beds
- Install new gravel drive and walking paths
- Install greenhouse(s) for additional gardening opportunities

Timetable: 2026 - 2030

Estimated Costs: \$150,000

Financial Resources: City funds, private donations, gardening club volunteer labor.



### Priority #5

Establish Neighborhood Parks in New Subdivisions

- Establish neighborhood parks in all new subdivisions through enforcement of the City's subdivision regulations.

Timetable: 2025 - 2040

Estimated Costs: \$100,000/park

Financial Resources: City funds, private donations, TPWD Small Communities Grant, development agreements.



### Priority #6

Designate Natural Areas for Use as Nature Parks & Green Belts

- Designate natural areas for use as nature parks, plant and wildlife conservation areas, and greenbelts throughout the City.

Timetable: 2025 - 2040

Estimated Costs: \$100,000/site

Financial Resources: Land donations from Private Citizens, TPWD grant programs.

# RECREATION & OPEN SPACE PLAN



## Goal 1: Implement improvements to Breckenridge City Park

Time period for meeting goal: 2024 - 2027

### Objectives

1. Install new splash pad
2. Replace outdated equipment
3. Upgrade landscaping

Consider application in 2024 to the Texas Recreation Parks Account Outdoor Grant Program, from the Texas Parks and Wildlife Department. This program provides matching funds in the amount of 50% of the project.

## Goal 3: Implement improvements to Booker T. Washington Park

Time period for meeting goal: 2025 - 2028

### Objectives

1. Add covered bleachers to baseball field
2. Replace outdated equipment
3. Add small walking trail
4. Add/replace park benches and picnic tables

## Goal 5: Establish neighborhood parks in all new subdivisions through enforcement of the City's subdivision ordinance.

Time period for meeting goal: 2025 - 2040

## Goal 2: Implement improvements to Lake Daniel Park

Time period for meeting goal: 2025 - 2030

### Objectives

1. Install two boat docks
2. Construct restrooms
3. Construct RV spots with water/electric hook-ups
4. Install playground

## Goal 4: Implement improvements to Community Garden Park

Time period for meeting goal: 2026 - 2030

### Objectives

1. Replace garden beds
2. Install new gravel drive and walking paths
3. Install new greenhouse(s) for additional gardening opportunities

## Goal 6: Designate natural areas for use as nature parks, plant and wildlife conservation areas and greenbelts, through the City.

Time period for meeting goal: 2025 - 2040

