

# STATEMENT OF QUALIFICATIONS

## CITY OF BRECKENRIDGE ENGINEERING SERVICES

### TXCDBG PROJECT

MARCH 6, 2023



Enprotec | **Hibbs & Todd**

#### Abilene | Lubbock | Granbury

PE Firm Registration No. 1151

PG Firm Registration No. 50103

RPLS Firm Registration No. 10011900

#### Corporate Headquarters

402 Cedar Street  
Abilene, Texas 79601

T: (325) 698-5560

F: (325) 690-3240

[www.e-ht.com](http://www.e-ht.com)

March 6, 2023

City of Breckenridge  
Attn: Cynthia Northrop  
City Manager  
105 N. Rose Avenue  
Breckenridge, Texas 76424

**Re: RFQ for Engineering Design Services  
TxCDBG Project**

Dear Ms. Northrop:

Enprotec / Hibbs & Todd, Inc. (eHT) is pleased to submit the qualifications of our firm to the City of Breckenridge (City) for consideration to provide professional engineering design services for the Texas Community Development Block Grant (TxCDBG) Program. We are committed to providing the City with the highest quality of professional services and consulting for this important and timely project.

Our Abilene, Granbury and Lubbock offices are staffed with highly-skilled engineers, scientists, plant operators, surveyors, construction management personnel, and technicians that stand ready to work on this project. Further, you will be personally taken care of by principals of our firm. We have worked with the TDA TxCDBG Program for over 30 years and are conversant with the rules and regulations.

Should additional information be desired, please don't hesitate to contact me.

Sincerely,

**Enprotec / Hibbs & Todd, Inc.**



Sage Diller, PE  
Associate Vice President

---

## TABLE OF CONTENTS

### Profile

- About eHT
- Client Vision Statement
- Funding Objectives & Sources
- Company Principals
- eHT Services

### Experience

- Funded Project Experience
- Relevant Experience

### Capacity to Perform

- Organizational Chart
- Team Experience
- Key Personnel

### Work Performance

- Regional Funded Projects
- Ability to Meet Schedules
- Community Service Projects
- Federally Funded Construction Projects
- Cost Control
- Permitting & Regulatory Compliance
- Labor Resources
- Quality of Work
- Project Approach

### Appendix

- Insurance
- Affirmative Action
- Registration
- System for Award Management
- TDA TxCDBG Certification
- Certification Regarding Lobbying
- Conflict of Interest Questionnaire



## PROFILE

### About eHT

**Enprotec / Hibbs & Todd, Inc. (eHT)** is a civil, municipal, environmental and geotechnical engineering firm with offices in Abilene, Granbury and Lubbock in the State of Texas. Our staff consists of engineers, surveyors, geologists, scientists, construction material lab technicians and field operations professionals.

Our success is based on enduring partnerships with our clients. eHT professionals bring a solid foundation of expertise and innovation to each client's project.

#### Client Vision Statement

Our goal is to be an organization where we attract clients with whom we can create enduring relationships. We want our clients to feel that we care about them personally and to view our people as being knowledgeable (experts) and honest. We desire to be a "user-friendly" company, providing clear, informative communication and quality work. We define product quality as timely, accurate and complete work. We define service quality as being dependable, trustworthy and confident in our work.

eHT is a forward-thinking and progressive team of engineers and scientists with deep industry expertise, knowledge and resources. We understand the importance of being a consulting firm that clients can depend on for knowledge and expertise.

**More than 80% of our business comes from repeat clients.** We feel that in order to take care of our clients, we must learn their business. We realize that we are working for you, and for the citizens you serve as well.

We are in the business of improving community infrastructure while creating sustainable development and preserving some of our most prized natural resources. In essence, we offer engineering solutions with a view for tomorrow.

With offices serving Texas, our resources are strategically located to meet our clients' need for personal and reliable service. Each of our offices has a unique set of skill sets that complement each other. We have helped our clients place the past behind them, manage the present and plan for a profitable future. Our diverse staff of professionals is one of our greatest assets. Our people care about their work and their relationships with clients. From planning to completion, each project is personally handled by people who know our clients and their businesses. Our staff of engineers and professionals provides clients with practical, cost-effective engineering solutions.



#### Resources

High Senior Staff Interaction

Regional Texas Offices

Diverse Expertise Across Texas

Low Overhead

Engineering-Science-Operations Mix

System Operators on Staff

#### Emphasis on Relationships

Regulatory Agency Relationships

Funding Agency Relationships

Client Commitment

Experienced Attention to Project Needs and Goals

Partnership, Advocacy and Planning

#### Client Benefits

Appropriate Attention to Project Needs and Goals

Higher Personal Interaction and Responsiveness

Solid Advice to Clients on Infrastructure Issues

Efficient and Effective Design and Construction

User-Friendly Engineering Design

Efficient and Effective Funding Agency Coordination

Our experience with mid-sized clients provides a customized approach – ONE SIZE DOES NOT FIT ALL!

**WE ARE IN THE BUSINESS OF IMPROVING  
COMMUNITY INFRASTRUCTURE WHILE  
CREATING SUSTAINABLE DEVELOPMENT  
AND PRESERVING SOME OF OUR  
MOST PRIZED NATURAL RESOURCES.  
IN ESSENCE, WE OFFER ENGINEERING  
SOLUTIONS WITH A VIEW FOR  
TOMORROW.**





## Funding Objectives and Sources

Engineering and construction services funded under the Texas Department of Agriculture (TDA) can improve, modernize and expand local resources enabling entities to accommodate current and future needs of the community. eHT has extensive experience with TDA-funded projects and processes. You can rely on our services to assist in the application process and you can rely on our expertise to deliver sound engineering projects. Our project team has a long-term record of experience with state and federal funding agency requirements to manage projects without unnecessary delays. An important aspect of working with local governments is understanding the funding mechanisms and programs. eHT has been involved over the past 30 years in helping municipalities and counties obtain the necessary funding they need for their public works projects.

We have experience with the following programs and agencies:

- Texas Department of Agriculture (TDA): Community Development Fund (CD), Community Development Block Grant (CDBG), Texas Capital Fund (TCF), Colonia Planning Fund (CPF), Colonia Construction Fund (CFC), Colonia Economically Distressed Areas Program (CEDAP), Planning and Capacity Building Fund (PCB), Disaster Relief Fund (DR), Urgent Need (UN), Small Towns Environment Program (STEP), Renewable Energy Demonstration Pilot Program (REDPP), American Recovery & Reinvestment Act (ARRA), Disaster Recovery, Renewable Energy
- Texas Water Development Board (TWDB): Economically Distressed Areas Program (EDAP), Drinking Water State Revolving Fund (DWSRF), Clean Water State Revolving Fund (CWSRF), Rural Water Assistance Fund, Water Infrastructure Fund, State Participation Program-Regional Water and Wastewater Facilities, Regional Facility Planning Grant Program, Texas Water Development Fund (DFund)
- Rural Development (RD)
- Economic Development Administration (EDA)
- North American Development Bank (NADBank)
- South Texas Development Council (STDC)
- Texas Department of Transportation (TxDOT)
- Texas Parks and Wildlife Department (TPWD)

## Company Principals

Scott F. Hibbs, PE, President  
Bob Benham, CFO  
Scott Yungblut, PE, VP  
Joshua L. Berryhill, PE, VP  
Chris Hay, PE, Ass. VP

Keith P. Kindle, PE, BDO  
Scott D. Hay, PE, VP  
Jordan S. Hibbs, PE, VP  
Sage Diller, PE, Ass. VP  
Colden S. Rich, Ass. VP

## eHT Services

### Water Resources

Water Supply Planning  
Development of Water Supplies  
Water Transmission / Distribution  
Water Treatment  
Elevated / Ground Storage  
Pump Station Design and Improvements

### Wastewater Services

Wastewater Treatment  
Wastewater Collection and Transmission  
Reclaimed Water  
Wastewater Master Planning

### General Civil

Street, Paving, Grading and Drainage Design  
Land Development  
Stormwater Management  
Park and Trail Design  
Municipal Pool Design  
Athletic Facilities  
Downtown Revitalization and Sidewalk Improvements

### Assessment Services

Monitoring Programs  
Feasibility Studies  
Risk-Based Assessments  
TRRP Assessments  
Air Quality Sampling  
Water and Soil Sampling  
Subsurface and Groundwater Assessments  
Phase I and II Transaction Assessments  
Indoor Air Quality Assessments  
Pollution Prevention

### Regulatory Compliance

Process Safety Management  
Risk Management Plans  
Compliance Audits  
Sara Title III Compliance  
Regulatory Agency Interface  
NEPA Environmental Documents

### Remediation Services

Corrective Action Plans  
Feasibility Studies  
Pilot Tests  
Groundwater Recovery  
Implementation of Remedial Technologies such as Vapor Extraction, Bioremediation, Soil Venting, Air Sparging  
Water, Soil and Air Treatment  
Plume Stability Monitoring  
Closure Plans



### **Solid / Hazardous Waste**

Landfill Design and Permitting  
Solid Waste Planning  
Landfill Construction Quality Control and Assurance  
Soil Liner Evaluations, Inspections and Reports  
Landfill Closure / Post Closure Monitoring  
Hazardous Waste Management Plans  
RCRA Facility Permitting  
TSD Facility Audits  
Air Quality Sampling  
Water and Soil Sampling  
Aquifer Testing  
Soil Vapor Surveys  
Subsurface and Groundwater Assessments

### **Permitting**

Domestic Wastewater Permitting  
Industrial Wastewater Permitting  
Air Permitting  
Solid / Hazardous Waste Permitting  
Development of CT Studies for Potable WTPs

### **Pollution Prevention Services**

Recycling and Resource Recovery  
Waste Stream Reduction and Alternatives  
Stormwater Management  
Pollution Prevention Plans  
Spill Prevention Control and Countermeasure Plans

### **Construction Management and Inspection**

Construction Administration and Management  
Peer Review  
Bidding Support  
Start-up Support  
Construction Support  
Resident Construction Inspection

### **Contract Operations**

Surface and Groundwater Treatment Plant Operations  
Wastewater Treatment Plant Operations  
Water Distribution System Flushing Programs  
Public Water System Tank Inspections  
Monthly, Quarterly and Annual Monitoring and Reports  
Collection and Analysis of Compliance Samples  
Organizing and Digitizing Plant Information  
Optimizing and Troubleshooting Chloramine Residuals  
Identifying and Resolving System and Water Quality Issues  
Monitoring Plans, Laboratory Approval and NAPs  
Water and Wastewater Facilities Startup and Commissioning  
Production of Operations and Maintenance Manuals  
Response Measures to TCEQ Issued Violations  
Alternative Capacity Requirements for Public Water Systems  
Water Conservation and Drought Contingency Plans and  
Annual Water Conservation Reporting  
Risk Management Plans (RMP) and RMP Training  
Emergency Response Plans

### **Mold Consulting**

Sampling and Testing  
Mold Inspection and Assessment  
Mold Remediation Plans

### **Asbestos Consulting**

Building / Facility Surveys  
Condition Assessments  
Bulk Sample Collection  
Preparation of Operation and Maintenance Programs  
Asbestos Abatement Project Design & Specifications  
Asbestos Abatement Contractor Bid Evaluation  
Abatement Monitoring and Administration  
Hazard Awareness Training and Consulting  
OSHA Compliance Consulting  
ASHERA Compliance Consulting  
NESHAP Compliance Consulting

### **Geotechnical Engineering**

Subsurface Explorations - Borings  
Soil Property Evaluations  
Foundation Recommendations  
Pavement Recommendations  
Roadway and Parking Lot Upgrades

### **Construction Materials Testing**

Material Sampling  
Concrete Mix Design  
Concrete Cylinders and Beams  
Slump Testing  
Air Content Testing  
Plant Inspection  
Moisture Contents  
Atterberg Limits Testing  
Sieve Analysis  
Specific Gravity and Absorption  
Proctor Information  
Field Density Testing  
Core Sampling  
Wet Ball Mill Testing  
Soundness Testing  
Abrasion Testing  
CBR Testing  
Hot Mix Design

### **Surveying Services**

Boundary, Topographic, Route, ALTA/ACSM, Plats/Maps



# EXPERIENCE

## Experience with Federal and Grant Programs Past 10 Years

City of Abilene	2018 TWDB Water Meter Replacement	Jones County	2016 CDBG Water System Improvements
Acton MUD	2022 TWDB Wastewater Treatment Plant #1 2022 TWDB Wastewater Treatment Plant #2	LLWSSSC	2013 TWDB Water Treatment Improvements
City of Alamo	2022 TWDB Wastewater Treatment Plant	City of Loraine	2021 CDBG Comprehensive Plan 2017 CDBG Water System Improvements 2012 CDBG Water and Sewer Improvements
City of Ballinger	2022 ARPA Water Meter Replacement 2021 CDBG Paving Improvements 2013 CDBG Wastewater Improvements	City of Malone	2015 TWDB Water System Improvements
City of Beeville	2018 TWDB WTP Improvements	City of Mason	2017 TWDB Water Treatment Project
City of Big Lake	2022 ARPA Water System Improvements 2021 CDBG Water Line Improvements 2017 CDBG Water System Improvements	City of Mertzon	2022 CWSRF Wastewater Improvements 2016 CDBG Water and WW Improvements 2012 CDBG Water and Wastewater System
City of Blanket	2022 CDBG Water System Improvements	Mullin ISD	2022 TWDB Water System Improvements
City of Brady	2022 TWDB and EDAP Radium Reduction Project	City of New Deal	2019 CDBG Water System Improvements 2018 TWDB Water System Improvements
City of Breckenridge	2022 TWDB Water System Improvements 2022 ARPA Water Meters and Lift Station 2021 TWDB Wastewater Improvements 2016 TWDB Wastewater Treatment Plant 2015 TWDB Water Treatment Plant 2014 CDBG Water Line Replacement 2013 TWDB Water Treatment Improvements 2012 TWDB Wastewater Improvements	City of Paducah	2020 TWDB Water System Improvements
City of Brownfield	2018 TDA Downtown Revitalization Project	Palo Pinto County	2013 TWDB Water Treatment Improvements
City of Cisco	2022 TWDB WWTP Improvements 2018 TWDB Water Treatment Plant 2018 CDBG Paving Improvements 2017 FEMA HGMP Emergency Sirens 2016 TWDB Water Treatment Plant 2013 TCF Sewer Infrastructure 2012 CDBG Water Improvements	Parker County SUD	2022 TWDB Water System Improvements
City of Coahoma	2022 USDA RD Wastewater Improvements 2020 CDBG Wastewater Treatment Plant Imp.	Town of Pecos City	2019 TWDB Wastewater System Improvements
City of Cool	2014 CDBG Water System Improvements	Pecos County	2017 CDBG Water Transmission Line 2014 CDBG Water System Improvements
Concho County	2013 CDBG Water System Improvements	Reagan County	2022 TxDOT Street Improvements 2021 TxDOT Street Improvements 2020 TxDOT Street Improvements 2016 TxDOT Street Improvements
Crockett County WCID1	2016 CDBG Sewer Line Improvements	Richmond-Rosenberg	2014 TWDB Water Treatment Plant
Crosby County	2012 CDBG Water System Improvements	City of Robert Lee	2022 ARPA Project
City of De Leon	2013 TWDB Water Treatment Improvements	City of Roma	2022 TWDB Wastewater Treatment Plant 2020 CDBG Paving Improvements 2017 CDBG Paving Improvements 2015 TWDB Regional Water System 2012 GLO Disaster Relief Paving
Dickens County	2013 TWDB Water Treatment Improvements	City of Roby	2014 CDBG Water System Improvements
City of Eden	2020 CDBG Water Line Improvements 2019 USDA RD Water and Wastewater System 2015 CDBG Water Line Replacement	Rolling Shores Water	2022 TWDB/FEMA Water System Improvements
City of Eastland	2022 TWDB FIF Flood Study 2021 GLO Flood Mitigation Improvements 2018 TWDB Water System Improvements 2017 CDBG WWTP Improvements 2016 TWDB Wastewater Treatment Plant	City of Roscoe	2021 ARPA Water System Improvements 2019 TWDB Water Distribution Improvements 2016 TWDB Wastewater Collection System 2013 TWDB Wastewater Treatment
Eastland County (ECWSD)	2021 GLO Flood Mitigation Improvements 2019 TWDB Water System Improvements 2017 CDBG Water Lines	City of San Angelo	2019 TWDB Groundwater Supply Project
City of Evant	2016 CDBG Water System Improvements 2014 CDBG Water System Improvements	City of Santa Anna	2022 ARPA Wastewater Improvements 2019 CDBG Wastewater System Improvements
Fisher County	2021 CDBG Water Line Improvements	Scurry County	2016 TxDOT Street Improvements
City of Glen Rose	2020 CDBG Street and Drainage Improvements 2018 TWDB Collection System Improvements 2016 CDBG Water System Improvements 2013 TWDB Wastewater Treatment Plant	City of Seminole	2022 ARPA System Improvements 2022 CDBG Drainage Improvements
City of Granbury	2022 CDBG Drainage Improvements 2021 ARPA Lift Station Improvements 2018 TWDB Water Treatment Plant Expansion 2018 TWDB Wastewater Treatment Plant 2017 TWDB Water System Improvements 2016 TWDB Meter Replacement Project 2016 TCF Water System Improvements	City of Sonora	2022 ARPA Sewer System Improvements
Hawley WSC	2016 CDBG Water System Improvements	City of Smyer	2022 USDA RD Application 2014 CDBG Water and Wastewater 2013 TWDB Water System Improvements
Hood County	2021 CDBG Pump Systems 2015 CDBG Sewer System Improvements	City of Spur	2019 CDBG Water and Sewer Improvements
Irion County	2012 CDBG Paving Improvements	City of Stamford	2016 TWDB Water System Improvements 2013 CDBG Water Storage Improvements
Johnson County SUD	2019 TWDB Water System Improvements	Sutton County	2020 CDBG Wastewater Improvements
		City of Sweetwater	2022 APRA Emergency Generator 2020 TWDB Water System Improvements 2020 TWDB Wastewater System Improvements 2018 CDBG Water Line Replacement 2016 TWDB Water System Improvements 2014 TWDB Water Treatment Improvements
		City of Texico	2017 CDBG Wastewater System Improvements
		ULRMWD	2022 TWDB Water System Improvements
		Valley WSC	2012 TWDB Water System Improvements
		City of Winters	2022 ARPA Pump Replacement 2020 CDBG Wastewater Collection System 2017 CDBG Wastewater Collection 2017 TWDB Water System Improvements 2014 CDBG Wastewater System Improvements 2014 TWDB Water Treatment Improvements

## Representative City of Breckenridge Projects

### TxDOT US 183 North Sewer Relocation

The City of Breckenridge (City) contracted with eHT to provide project management, design, and construction administration for the replacement of all existing sewer lines within the TxDOT right-of-way in preparation for the planned rehabilitation for US 183 North from the City's downtown area to north of the City Limits. The project included approximately 5,000 linear feet of 4-inch thru 15-inch SDR-26 PVC gravity sewer main along with steel encasement, manholes, service laterals and pavement replacement. The City contracted a utility contractor to construct the improvements and was reimbursed by TxDOT once complete. eHT coordinated with the TxDOT Brownwood District on behalf of the city from beginning to end. The project provided approximately \$1.4 million of improvements.

### Drainage, Paving and Utilities Improvements

eHT provided project management, design, bid phase services, funding application support and construction administration services for this multi-faceted project for the City of Breckenridge. The project included roadway rehabilitation including roadway excavation, new base material, grading, compaction, new hot mix asphalt and concrete pavement and new concrete curb and gutter. A storm drainage system was installed that includes curb inlets, grate inlets, pipe, junction boxes and outfalls. The project included the installation of new water lines and sewer lines in all areas of the paving project. 4,065 linear feet of 4-inch, 3,265 linear feet of 6-inch, 4,005 linear feet of 8-inch and 170 linear feet of 12-inch water lines were installed, as well as 1,050 linear feet of 6-inch, 555 linear feet of 8-inch and 5,750 linear feet of 10-inch sewer line. New driveway approaches and tie-ins to adjoining streets with 4,310 square yards of sidewalk replacement was also included in the project. The project was funded through United States Department of Agriculture (USDA) Rural Development (RD) funding. The project included a Traffic Control Plan and Stormwater Pollution Prevention Plan.

### Engineer of Record

eHT assists the City in review and coordination of planned commercial and residential developments, which includes plat review, utility system analysis, TxDOT coordination and many other services. In addition, eHT provides consulting services to the City when utility extensions and system upgrades are required for system upgrades. Service has also been provided to aid the Economic Development Corporation in mapping and planning efforts.

## USDA Paving and Drainage

eHT provided project management, design, bid phase services, funding application support and construction administration services for this multi-faceted project for the City of Breckenridge. The project included roadway rehabilitation including roadway excavation, new base material, grading, compaction, new hot mix asphalt and concrete pavement and new concrete curb and gutter. A storm drainage system was installed that includes curb inlets, grate inlets, pipe, junction boxes and outfalls. The project included the installation of new water lines and sewer lines in all areas of the paving project. 4,065 linear feet of 4-inch, 3,265 linear feet of 6-inch, 4,005 linear feet of 8-inch and 170 linear feet of 12-inch water lines were installed, as well as 1,050 linear feet of 6-inch, 555 linear feet of 8-inch and 5,750 linear feet of 10-inch sewer line. New driveway approaches and tie-ins to adjoining streets with 4,310 square yards of sidewalk replacement was also included in the project. The project was funded through United States Department of Agriculture (USDA) Rural Development (RD) funding. The project included a Traffic Control Plan and Stormwater Pollution Prevention Plan.

### Water Treatment Plant Improvements

eHT provided planning, design and construction services for improvements to the City of Breckenridge's 3.4 MGD surface water treatment plant (WTP). eHT designed and constructed improvements to the raw water piping, pretreatment units, clarifiers, filters, pump stations, chemical feed systems, and electrical and controls systems. The raw water piping improvements included the construction of new raw water metering stations, chemical injection points, flow control valves, and rapid mix basin improvements. Plate settler packs were added to the two clarifiers to increase the efficiency of the units while maintaining the existing sludge disposal systems. The plant utilizes two dual media filters which had recently been rehabilitated with the replacement of filter media. For this project, filter-to-waste piping was installed to increase the operational flexibility of the filters as well as the associated waste piping. Filtered water is pumped from a transfer pump station to the plant clearwell. The transfer pumps and associated discharge piping were also replaced. The existing high service pumps were improved with the installation of variable frequency drives (VFDs) for each of the pumps and one pump which was in disrepair was replaced. The project also included upgrading and expanding the chemical systems including the replacement of the chemical day tanks and chemical feed skids, as well as the replacement of the plant electrical system and supervisory control and data acquisition (SCADA) system.





## Wastewater Treatment Plant Upgrade

To maintain compliance with the Texas Commission on Environmental Quality (TCEQ) regarding its wastewater system, the City of Breckenridge (City) selected eHT to provide design and construction management for an upgrade of its wastewater treatment plant (WWTP) to respond to challenges with infiltration and inflow (I/I) of water into the City's wastewater collection system, which led to excessive flow loading at the WWTP during wet weather events. Those high flows combined with the lack of solids storage at the WWTP resulted in violation of the Texas Pollutant Discharge Elimination System (TPDES) permitted effluent limits. The WWTP also received notices of violation (NOV) following recurring overflows, mostly due to an internal re-lift pump station failing to restart after power outages. The plant was also at risk for major permit violations since the WWTP only had one operable clarifier.

The completed project consisted of constructing a new clarifier at the south edge of the plant, converting the existing small clarifier to a sludge holding tank, and rehabilitating the rest of the plant. The completed project also included isolation of the unused filters, electrical and control system improvements, influent screening, installation of aspirating aerators to replace the old floating disc aerators, rehabilitation of the chlorine contact basin structure, plant water system improvements, RAS/WAS pumping rehabilitation, and installation of a backup generator.

## TxDOT US 180 Utility Relocation

eHT provided planning, design, project management, construction management, and inspection for water and sewer system relocations on US 180 in Breckenridge. The project included 230 linear feet (LF) of 8-inch, 861 LF of 10-inch, 76 LF of 15-inch, and 126 LF of 18-inch gravity sewer lines, as well as 9,198 LF of 6-inch, 2,031 LF of 8-inch, 751 LF of 10-inch, and 3,660 LF of 12-inch water line. The project included steel encasement for all highway crossings. The utility relocation work was included in the overall TxDOT roadway contract and eHT performed the design and construction management services on behalf of the City. eHT built a strong working relationship with the TxDOT Brownwood District during the successful completion of this project. The utility relocation portion of the project was approximately \$2 million.

## DWSRF Distribution Improvements

eHT provided project management for the project which included the installation of water lines, fire hydrants, gate valves and the replacement of existing water meters in various locations throughout City of Breckenridge (City) limits. eHT prepared the Texas Water Development Board (TWDB) financial application and assisted the City with Agency coordination. Additionally, eHT planned, piloted and challenge tested the project. eHT provided permitting support and Texas Commission on Environmental Quality (TCEQ) coordination, water supply analysis, property acquisition assistance, surveying services for planning and project management, design, and construction administration. eHT developed a hydraulic model of the water system to evaluate the adequacy and performance of the existing and future improvements. The project was funded utilizing the TWDB Drinking Water State Revolving Fund (DWSRF).

## CDBG Water Line Replacement

eHT provided project management, application assistance, design, bidding assistance and construction administration for water line replacement along Panther Street from Jeanette to West 4th and along West 4th from Panther to Parks Street. The project included 2,460 linear feet of 8-inch water line, 1,225 linear feet of asphalt pavement replacement, and 85 each of gravel pavement replacement.

## CDBG Water Line Replacement

eHT provided project management, application assistance, design, bidding assistance and construction administration for water line replacement. The project included 2,285 linear feet of 6-inch water line and 200 linear feet of 4-inch water line.

## Hydraulic Model Update

eHT provided an update to the City's hydraulic water model including incorporating water distribution improvement projects; field verifying water storage tank elevations; utilizing past fire hydrant test results to calibrate the model; analyzing planned water distribution system improvements; and, analyzing proposed development projects to determine the adequacy of the system to provide requested flow and pressure to the development sites.

## Pavement Evaluation

eHT provided an evaluation of the existing paving conditions throughout the City and provided a prioritized list of streets recommended to be rehabilitated.



## Water System Improvements City of Mason



The City of Mason addressed the need to improve its water system because of violations noted by the Texas Commission on Environmental Quality (TCEQ). Increasingly stringent regulatory requirements for radionuclides coupled with cyclical deterioration in raw water availability and quality were straining the capabilities of the City's existing water system. The quality of the City's groundwater sources was above the TCEQ's and Environmental Protection Agency's (EPA) Primary Drinking Water Standards Maximum Contaminant Level for Combined Radium and Gross Alpha Particles. As a result, eHT provided application assistance, project management, design and construction administration of a radionuclide pilot and treatment project. The project consisted of the construction of a new radionuclide reduction system (RRS) on the site of Groundwater Well No. 2, as well as a new supervisory control and data acquisition (SCADA) system to coordinate distribution system operations. Additional work included distribution system improvements, a new ground storage tank, and the replacement of two high service pumps at an elevated storage tank site.

Contact: John Palacio, City Administrator, (325) 347-6449

## Smith Street Lift Station City of Mason

eHT is providing an evaluation of the City's Smith Street Lift Station to determine the best path forward for the design of the rehabilitation of the lift station. eHT was also selected to complete the design and construction of the Smith Street Lift Station Improvements Project which will begin within the next month.

Contact: John Palacio, City Administrator, (325) 347-6449

## Roadway and Drainage Improvements City of Roma



As a result of a hurricane, the City sustained flooding that resulted in drainage infrastructure failure. The storm sewer and drainage system infrastructure failed to function because the current system could not convey the volume of water generated during the hurricane. The failure threatened the public health, safety, and welfare of area residents and

the City needed adequately-sized drainage infrastructure. The City contracted with the Texas General Land Office to administer a Hurricane Dolly Disaster Funding Program to assist in rehabilitating affected areas. eHT provided project management, funding application assistance, design, and construction administration for roadway rehabilitation and storm sewer improvements. The improvements significantly increased the capacity of the site drainage, improved the function of the drainage system during large storm events, and provided long-term mitigation to stagnant water.

Contact: Alejandro Barrera, City Manager, (956) 849-1411

## Street Improvements City of Granbury

eHT provided project management, design and construction administration for various street improvements in the City. The projects included Misty Meadows Drive; South Olsen Court; North Travis Street; North Crockett Street; Brazos Harbor Drive; East Clifton Road; and, Deputy Larry Miller Road.

Contact: Rick Crowover, Public Works Director, (817) 573-7030

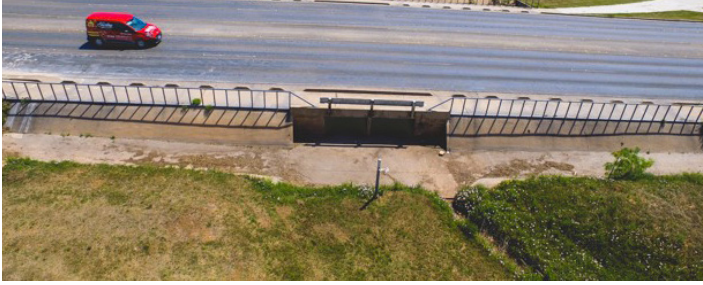
## TxCDBG Street and Water Line Improvements City of Granbury

eHT provided project management, application assistance, design and construction management for water line improvements on Harbor Lakes Drive, as well as street reconstruction of Harbor Lakes Drive, M&M Ranch Road and Industrial Avenue. Construction inspection and construction materials testing was performed.

Contact: Rick Crowover, Public Works Director, (817) 573-7030



## College Hills Boulevard and Drainage City of San Angelo



eHT is providing project management, design and construction administration for the replacement of aging roadway surface with full depth base, as well as drainage improvements along College Hills Boulevard (CHB). The project includes the rehabilitation of water and sewer utilities, roadway design, drainage evaluation and improvements, right-of-way verification, design survey, geotechnical investigation and the development of plans and specifications.

Contact:  
Shane Kelton, Public Works Director, (325) 657-4206

## Drainage, Paving and Utilities Improvements City of Breckenridge

eHT provided project management, design, bid phase services, funding application support and construction administration services for this multi-faceted project for the City of Breckenridge. The project included roadway rehabilitation including roadway excavation, new base material, grading, compaction, new hot mix asphalt and concrete pavement and new concrete curb and gutter. A storm drainage system was installed that includes curb inlets, grate inlets, pipe, junction boxes and outfalls. The project included the installation of new water lines and sewer lines in all areas of the paving project. 4,065 linear feet of 4-inch, 3,265 linear feet of 6-inch, 4,005 linear feet of 8-inch and 170 linear feet of 12-inch water lines were installed, as well as 1,050 linear feet of 6-inch, 555 linear feet of 8-inch and 5,750 linear feet of 10-inch sewer line. New driveway approaches and tie-ins to adjoining streets with 4,310 square yards of sidewalk replacement was also included in the project. The project was funded through United States Department of Agriculture (USDA) Rural Development (RD) funding. The project included a Traffic Control Plan and Stormwater Pollution Prevention Plan.

Contact: Cynthia Northrop, City Manager, (254) 559-8287

## Water System Improvements City of Sweetwater



eHT provided application support, project management, design and construction phase services for this water system improvement project funded through the Texas Water Development Board's (TWDB) Drinking Water State Revolving Fund (DWSRF) Program to create a safer, more reliable, and efficient water supply system for the customers of the City of Sweetwater (City). The project included construction of approximately 2,600 linear feet (LF) of 6-inch C900 DR18 PVC water line, 4,300 LF of 10-inch C900 DR18 PVC water line, related fitting and valves and related work to reconnect existing water lines and meters to new water lines. Additionally, the project includes raw water pump station improvements and membrane replacement. Rehabilitation of the City's 820,000-gallon welded steel clearwell at the water treatment plant (WTP), including the recoating of the interior and exterior, was completed separately utilizing the American Rescue Plan Act funds.

Contact: Eddy Campbell, Utilities Director, (325) 235-4166

## TxCDBG Water Line and Street Improvements City of Big Lake

eHT provided project management, design and construction administration for water line replacement with full-depth pavement replacement along Montana Avenue. The existing water line was replaced, and the full width of existing asphalt pavement was replaced due to its deteriorated condition. The project consisted of 3,250 square yards of asphalt removal and replacement.

Contact: Sheri Benson, City Administrator, (325) 884-2511





## Northeast Water System Improvements City of Midland



The City of Midland experienced a large amount of development growth in the northeast section of the water distribution area, defined as north of State Highway Loop 250 and east of Big Spring Street. The City hired eHT to provide professional services to plan and design water system improvements to support existing and expected future water system demands in this portion of the service area. The project included transmission system improvements to provide water supply from the Water Purification Plant to the area. Additional project elements included pump station improvements and an elevated storage tank (EST) to provide storage and pressure in the project area. Distribution system improvements were also incorporated to connect the system with the new elevated storage tank. The project design included approximately 50,000 linear feet (LF) of 24-inch transmission piping and 18,000 LF of 30-inch transmission piping, encased highway boring, air release valves, a 2 MG EST and high service pumps.

Contact: Carl Craig, PE, Utilities Director, (432) 685-7937

## I-20 Water Line Improvements City of Cisco

eHT provided planning, design, and construction services for approximately 185 linear feet (LF) of 6-inch PVC water line via open cut; 485 LF of 8-inch HDPE water line via encased bore; 480 LF of 12-inch steel encasement; and approximately 116 square yards of concrete pavement replacement.

Contact: Darwin Archer, City Manager, (254) 442-2111

## TxCDBG Sewer System Improvement City of Eastland

eHT provided project management, design and construction administration for sewer system improvements including replacement of approximately 2,600 linear feet of 8-inch sewer force main, pipe bedding, pavement repair, combination vacuum/air relief valves and associated appurtenances. The project included construction of 10-inch PVC force main via open-cut excavation including granular pipe bedding, valves and pavement replacement along South Broughter Street, from East Sodosia Street south to the wastewater treatment plant. The project included funding through the Texas Community Development Block Grant (TCDG) Program administered by the Texas Department of Agriculture (TDA).

Contact: JJ Oznick, City Manager, (254) 629-8321

## Water and Wastewater Improvements City of Eden

eHT provided project management, funding application assistance and design for construction of water and sewer infrastructure improvements consisting of the replacement of old dilapidated water distribution piping and sewer collection piping within existing systems for the City of Eden (City). The project included construction of a low-pressure sewer collection system in lower areas of the system, as well as a lift station on the east side of town. Some portions of the City's water and sewer systems had reached the end of their design life and were no longer capable of reliably serving the residents of the City. Faced with constant pipe repair costs and interrupted service to their customers, the City decided to replace the most problematic sections in the systems. The project also included new lines to loop the water system and increase water availability. The project included installation of a 250-kW emergency generator for the water treatment plant and a 200-kW emergency generator for Well No. 3. The project utilized funds through United States Department of Agriculture (USDA) Rural Development (RD) and Rural Utilities Service (RUS).

Contact: Laura Beeson, City Administrator, (325) 869-2211

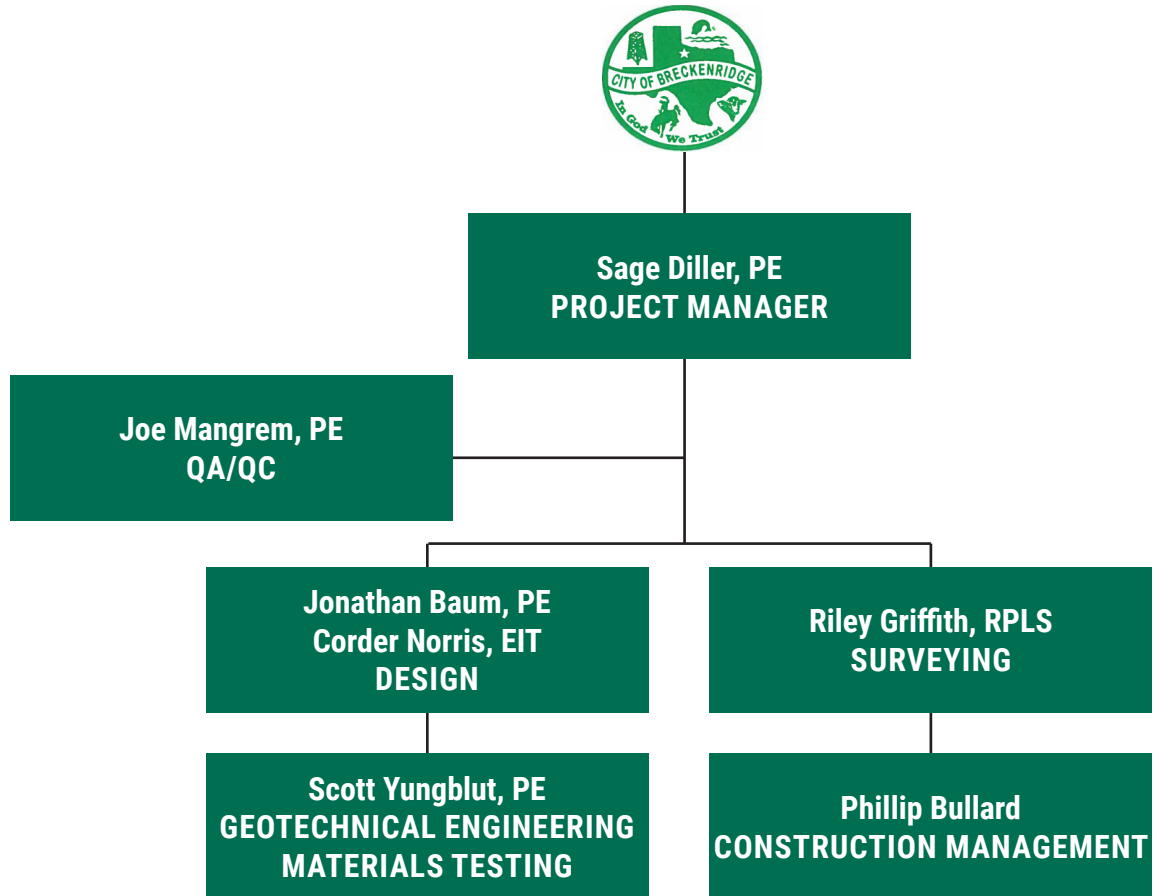




## CAPACITY TO PERFORM

### Organizational Structure

Key Personnel are listed herein. Additional personnel are available as needed.



### Team Experience

Our Project Manager and Team Members have a strong understanding of the design, construction, regulatory and funding issues related to TDA funded projects.

We have listed key Team Members who will assist in accomplishing the objectives of various projects. Additional support personnel are available for the Project as needed.

Our resources include additional engineering professionals, survey crew members and Registered Professional Land Surveyors, geologists/geoscientists, field technicians and drafting personnel.

Resumes for the above personnel follow.



## Sage Diller, PE Project Manager

### PROFESSIONAL EXPERIENCE

Mr. Diller has over 19 years of experience in project design, management and construction oversight on a wide range of projects for municipal, state and private entities. His past projects have included municipal water and sewer systems, groundwater wells and storage facilities, state and county roadways and private developments. In addition to design and construction management, Mr. Diller has extensive experience assisting clients in applying for grant/loan funding through various funding agency programs, including Texas Water Development Board DWSRF and CWSRF, USDA Rural Development, Texas Department of Agriculture CDBG and DTR and TxDOT Utility Relocation and TAP Programs.

### PROJECT EXPERIENCE

- **Plan Review and Engineer of Record, City of Breckenridge:** Project Manager assisting the City in review and coordination of planned commercial and residential developments, which includes plat review, utility system analysis, TxDOT coordination and many other services. In addition, Mr. Diller provides consulting services to the City when utility extensions and system upgrades are required for system upgrades. Service has also been proved to aid the Economic Development Corporation in mapping and planning efforts.
- **Park Street Paving and Drainage Improvements, City of Breckenridge:** Project Manager for construction of approximately 1,000 tons of hot mix asphalt paving, 23,400 square yards of concrete paving, 32,900 square yards of flexible base material, 11,500 linear feet of 4-inch to 12-inch water line, 7,400 linear feet of 6-inch to 10-inch sewer line, 1,400 linear feet of 18-inch to 36-inch storm drain, including curb, gutter and sidewalks.
- **TxDOT US 180 Utility Relocation, City of Breckenridge:** Mr. Diller provided planning, design, project management, construction management, and inspection for water and sewer system relocations on US 180 in Breckenridge. The project included 230 linear feet (LF) of 8-inch, 861 LF of 10-inch, 76 LF of 15-inch, and 126 LF of 18-inch gravity sewer lines, as well as 9,198 LF of 6-inch, 2,031 LF of 8-inch, 751 LF of 10-inch, and 3,660 LF of 12-inch water line. The project included steel encasement for all highway crossings. The utility relocation work was included in the overall TxDOT roadway contract and Mr. Diller performed the design and construction management services on behalf of the City. eHT built a strong working relationship with the TxDOT Brownwood District during the successful completion of this project. The utility relocation portion of the project was approximately \$2 million.
- **Emergency Water Lines, City of Breckenridge:** Mr. Diller provided project management for the project which included the installation of water lines, fire hydrants, gate valves and the replacement of existing water meters in various locations throughout City of Breckenridge (City) limits. Mr. Diller prepared the Texas Water Development Board (TWDB) financial application and assisted the City with Agency coordination.



#### EDUCATION

Bachelor of Science, Civil Engineering  
Texas Tech University, 2001

#### REGISTRATIONS

Registered Professional Engineer –  
Texas #96645, 2005

#### PROFESSIONAL/CIVIC ORGANIZATIONS

Texas Society of Professional  
Engineers

United Way of Abilene, Executive  
Board and Finance Committee Chair

Texas Tech Alumni Abilene Chapter,  
President, 2015

#### CERTIFICATIONS/EDUCATION

eHT Leadership Development  
Program, 2013

Construction Specifications Institute

Priority Management, Dale Carnegie

HEC-RAS, Floodplain Management

Highway Capacity, Geopak I & II

#### AWARDS

20 Under 40, Abilene Young  
Professionals

#### PROFESSIONAL ENDEAVORS

Enprotec / Hibbs & Todd, Inc.  
Associate Vice President  
Abilene, Texas  
2007 - present

Texas Department of Transportation  
(TxDOT), Lubbock District  
Project Engineer  
Lubbock, Texas  
2001 - 2007



## Joe Mangrem, PE QA/QC

### PROFESSIONAL EXPERIENCE

Mr. Mangrem brings a unique owner's perspective with over seven years of experience in design, bidding, construction management, operation and maintenance of water, wastewater, street and drainage infrastructure. Working with input from the development community, Mr. Mangrem has developed and implemented design standards for municipalities, reviewed all aspects of development plans and performed field coordination between developer contractors and utility owners.

He is a skilled and capable civil engineer with a solid record of successful municipal public works design and construction projects. Prior to joining eHT he was the Assistant City Engineer for the City of San Angelo and provided direct support to the City Engineer with day to day operation of the department. Mr. Mangrem assisted with preparation of the annual operating budget and Capital Improvement Project plan and provided engineering support to the Planning and Development Services department as well as other city departments. He managed review and approval for acquisition and abandonment of public easement and right-of-ways and managed review and development plans and specifications for public infrastructure improvements. He also served as Project Engineer for the City of San Angelo. He reviewed development plans and specifications for compliance with City standards and evaluated material submittals to ensure compliance with City specifications. In this capacity he collaborated with City of San Angelo staff and the development community to compile and implement design standards for water and sewer.

Prior to his position with the City of San Angelo, Mr. Mangrem worked for the City of Lubbock as a Civil Engineering Associate. He designed and administered water utility capital improvement projects and prepared and reviewed construction plans, specifications and cost estimates. Mr. Mangrem managed multiple professional service contracts for studies, designs and construction representation and reviewed plans and specifications prepared by engineers for compliance with City of Lubbock standards. He also compiled and managed the City of Lubbock Public Works Design Standards manual.

### PROJECT EXPERIENCE

- College Hills Boulevard Paving and Drainage, City of San Angelo
- Paving Improvements, City of Big Lake
- Sayles Boulevard, City of Abilene
- Airport Lift Station Improvements, City of Midland
- Water Distribution System Hydraulic Model Analysis, City of Midland
- Water Distribution System Disinfectant Residual Evaluation, City of Midland
- Wastewater System Model Analysis, City of Midland
- Wadley Elevated Storage Tank Piping Improvements, City of Midland



#### EDUCATION

Bachelor of Science, Ocean Engineering  
Texas A&M University, 2010  
New Mexico Military Institute, 2004

#### REGISTRATIONS

Registered Professional Engineer –  
Texas #117205

#### PROFESSIONAL/CIVIC ORGANIZATIONS

American Society of Civil Engineers  
National Society of Professional Engineers  
Texas Society of Professional Engineers  
American Waterworks Association  
Abilene Chamber Young Professionals Association  
Leadership San Angelo, 2016  
Dale Carnegie Leadership Training, 2019

#### AWARDS

20 Under 40, Abilene Young Professionals

#### PROFESSIONAL ENDEAVORS

Enprotec / Hibbs & Todd, Inc.  
Project Manager  
Abilene, Texas  
2017 - present  
City of San Angelo  
Assistant City Engineer  
San Angelo, Texas  
2015 - 2017  
Project Engineer



# Jonathan Baum, PE

## Design

### PROFESSIONAL EXPERIENCE

Mr. Baum has experience in the design of streets, water, sewer and gas lines, detention basins, water quality ponds, parking lots, storm drainage systems, retaining walls and stormwater pollution prevention plans. Mr. Baum's experience includes the design and plan production of over 50 residential and commercial developments. He has experience in project management, construction management and operations support. Mr. Baum has previous experience working as a Bridge Inspection Assistant on over 700 bridges. In this capacity, he produced TxDOT bridge appraisals and bridge summary forms, helped to develop software to integrate inspection reports and appraisal programs, calculated load rating analyses, created bridge inventory sketches using AutoCad and Microstation and drafted bridge designs using I10/Domion Dr. and Friendswood-Link Rd.

### PROJECT EXPERIENCE

- **Abilene Law Enforcement Center, City of Abilene:** Mr. Baum provided site grading and paving plans for a new parking lot and sidewalks for the facility. He provided design of the stormwater drainage plan and underground storm drain piping for landscaping areas.
- **Student Housing Apartments, Hardin Simmons University:** Mr. Baum provided site grading and layout of retaining walls between new apartment buildings and existing City streets. He provided construction layout of buildings, curb and gutter and site utilities.
- **Remington Ridge Church of Christ:** Mr. Baum provided site plan layout and construction plans for site grading, paving, site utilities and stormwater detention. The project included a TxDOT driveway permit.
- **Whistle Stop RV Park:** Mr. Baum provided site grading, drainage plans, and private water and sewer utilities for clubhouse, offices and RV spaces. The project included public utility easement dedication for a City sewer main extension and building elevation certificates. He provided construction layout for all utilities, site curbing and parking areas.
- **Hendrick Home for Children Residence Cottages:** Mr. Baum provided construction layout and resolved elevation datum differences between plans and current GPS datum.
- **Fort Concho Barracks 3 and 4, San Angelo Area Foundation:** Mr. Baum provided pre-design topographic and utility surveying and prepared plans for site grading and site utilities for the construction of the two new buildings on a historical site.
- **Hampton Hills Section 3:** Mr. Baum provided design for a new residential subdivision and provided construction plans that consisted of street paving, water lines and sewer lines to serve 28 new homes.
- **Dyess Air Force Base Hospital Facilities, SES Construction and Fuels Services, LLC:** Mr. Baum provided project management and site plan design for the construction of temporary mobile units to be used as a temporary office building for Dyess Air Force Base personnel while hospital offices are renovated.



#### EDUCATION

Bachelor of Science, Civil Engineering  
Texas A&M University, 2003

#### REGISTRATIONS

Registered Professional Engineer –  
Texas #100982

#### PROFESSIONAL/CIVIC ORGANIZATIONS

American Society of Civil Engineers  
Texas Society of Professional Engineers, Sporting Clays Tournament Chair  
Hill Country Aggie Club

#### CERTIFICATIONS/EDUCATION

Erosion Control Materials and Soil Stabilization, Geo-Solutions, Inc.  
Composite Elevated Water Tanks, Landmark Structures  
Safety Inspection of In-Services Bridges, NHI/FHWA  
Steel Bridge Design Conference, NHI/NSBA LRFD

#### PROFESSIONAL ENDEAVORS

Enprotec / Hibbs & Todd, Inc.  
Project Manager  
Abilene, Texas  
2008 - present  
Matkin-Hoover Engineering & Surveying  
Assistant Project Manager  
Boerne, Texas  
2004 - 2008





## Corder Norris, EIT Design

### PROFESSIONAL EXPERIENCE

Mr. Norris has worked on a variety of civil and municipal projects in Texas. His experience includes paving and drainage, pond design, site development, client coordination and cost estimation. Additionally, he is experienced with utility design, including water distribution, wastewater and site utilities. He has provided environmental support including assisting with development of stormwater pollution prevention plans and site inspections to identify possible contaminants on construction sites.

### PROJECT EXPERIENCE

- Downtown Paving Project, City of Eden
- E.N. 10th Street Roadway Rehabilitation, City of Abilene
- Mills County Pump Station, Corix Utilities
- Parking and Paving Improvements, Caldwell ISD
- Mill Ridge Estates Subdivision
- New Batting Cages, Hardin Simmons University
- Industrial Park Renovations, City of Eden
- Hardison Boat and RV Storage
- Annexed Properties Utility Improvements, City of Seminole
- Stormwater Pollution Prevention Plan- Sierra Sunset Apartment Additions
- Public Works Building, City of Clyde
- Carter Asset Management Office Building, Parkhill
- Double Ott Pump Station, Corix Utilities
- US 190 Waterline Relocation, TxDOT/Lometa



#### EDUCATION

Bachelor of Science, Civil Engineering, Angelo State University, 2021

#### REGISTRATIONS

Engineer in Training

#### PROFESSIONAL/CIVIC ORGANIZATIONS

American Society of Civil Engineers  
Angelo State Ramgineers

#### PROFESSIONAL ENDEAVORS

Enprotec / Hibbs & Todd, Inc.  
Staff Engineer  
Abilene, Texas  
2022 - present

Harding Earthworks  
Project Engineer Intern  
San Angelo, Texas  
2020 - 2022

Cutter's Landscaping  
Job Site Manager  
Austin, Texas  
2018 - 2019

Chambers Welding and Construction  
Construction Hand  
Coleman, Texas  
2017 - 2018



# Scott Yungblut, PE

## Geotechnical Engineering and Materials Testing

### PROFESSIONAL EXPERIENCE

Mr. Yungblut has 27 years of experience in performing engineering analysis and design on geotechnical and construction materials testing projects throughout Texas, Louisiana, Arkansas and Oklahoma. He supervises and manages eHT's soil and materials testing laboratory responsibilities including proposal preparation, field investigation, field and laboratory analysis, report preparation and construction quality assurance and quality control.

The eHT laboratory staff utilizes state-of-the-art equipment and instrumentation. eHT procedures and methodologies conform to federal and/or state standards such as American Standards and Testing Methods (ASTM), TxDOT and American Concrete Institute (ACI).

### PROJECT EXPERIENCE

#### Geotechnical Expertise

Mr. Yungblut's geotechnical expertise includes:

- Subsurface Exploration
- Soil Property Evaluations
- Shallow and Deep Foundation Design Recommendations
- Foundations on Expansive Soils
- Pavement Design and Evaluation
- Roadway and Parking Lot Upgrades
- Airfield Pavements

#### Notable Civil Projects

- Abilene ISD: Various new schools and athletic facilities
- City of Midland Monopole Tower Sites
- Lamesa High School Improvements
- Hampton Inn & Suites, Lubbock
- Abilene Fire Training Academy
- Burger King/Popeyes, Midland
- Chisolm Truck Stop, Lubbock
- Hendrick Home for Children, Main Building, Abilene
- Avis Lube 126, Midland



#### EDUCATION

Bachelor of Science, Civil Engineering  
University of Texas at Arlington, 1993

#### REGISTRATIONS

Registered Professional Engineer –  
Texas #85640, 1999

#### CERTIFICATIONS/EDUCATION

Concrete Evaluation and Repair I & II,  
2011

Retaining Wall Design, 2010

Shrink Swell Soils, Texas A&M

Forensics Engineering Conference,  
2007

Texas Accessibility Academy, 2005

TxDOT HotMix (HMACP) Inspector,  
2003

ParSales Training, 1996

Dale Carnegie Leadership Course,  
1995

#### PROFESSIONAL ENDEAVORS

Enprotec / Hibbs & Todd, Inc.  
Vice President  
Abilene, Texas  
2000 - present

Giles Engineering Associates  
Project Engineer  
Dallas, Texas  
1997 - 2000

#### Professional Endeavors (Cont.)

Professional Service Industries, Inc.  
Project Manager, Department  
Manager, Technician, Geotechnical  
Services  
Dallas, Texas  
1994 - 1997



## Phillip Bullard

### Construction Management

#### PROFESSIONAL EXPERIENCE

Mr. Bullard has over 30 years of experience in construction management and inspection. He is hard-working, conscientious, and responsible with effective problem solving and analytical skills. He is skilled in planning and execution of projects during time critical environments. He has extensive knowledge in directing, coordinating and exercising authority for planning, organization, control and completion of projects as well as managing employee talents. He has conducted critical inspections on projects and provided solutions for related issues. He is skilled at solving customer relations issues by seeking first to understand and then to be understood. He is effectively able to communicate with customers, contractors and management to meet customer needs while still maintaining compliance with applicable codes. He can approach projects with a contractor's understanding of how to complete a project as well as an understanding of the engineering concepts of the project.

Mr. Bullard serves as a Resident Project Representative for eHT. In this capacity, he inspects materials for uniformity to the approved submittal and the incorporation of materials and labor into projects. Mr. Bullard witnesses all testing, such as: hydrostatic water line and bacteria tests, air test sanitary sewer tests, vacuum manhole tests, tapping sleeve air tests, soil/base densities and asphalt core samples for testing. He coordinates information between contractors, owners, engineers and utility owners. He also records installation locations and quantities for as builts and pay applications.

#### PROJECT EXPERIENCE

- **TxDOT Sanitary Sewer Utility Relocation, City of Breckenridge:** Installation of new sanitary sewer main line, sewer services, manholes, asphalt repair and traffic control.
- **TWDB DWSRF Contract D - Water System SCADA Improvements, City of Sweetwater:** SCADA package that includes new and refurbished antennae, new radios in panel boxes with programming to allow the water wells to communicate with the booster pumps and elevated/ground storage tanks.
- **Quela Street Lift Station Replacement, City of Monahans:** Installation of a new sanitary manhole, gravity and force main, a wet well with Flyte grinder pumps, a concrete valve vault and all new electrical service and pump controls surrounded by a security fence.
- **CDBG Water Line Improvements, City of Eden:** Installation of new water mains, gate valves, fire hydrants, water services and asphalt repair.
- **Hogan/Wadley Elevated Storage Tank Improvements, City of Midland:** Installation of new interior piping, flow control meter, flow meter and inside new concrete vaults. New SCADA, programming, radio, and controls to be centrally operated from the Water Purification Plant.
- **TWDB DWSRF Contract D - Water Line Replacement, City of Sweetwater:** Installation of new water mains, water services, fire hydrants, gate valves and asphalt repair.
- **Sealcoat Project, City of Seminole:** Installation of 185,000 square yards of street seal coating.



#### EDUCATION

Bachelor of Science, Civil Engineering, Texas Tech University, 1993

Associate of Science, Pre-Engineering, South Plains College, 1990

#### CERTIFICATIONS/EDUCATION

Hot Mix Asphalt Level 1B, 2014

Nuclear Density Gauge Certification, 2014

Water Distribution Operator Class C, 2013, WD0011340

Class A Commercial Drivers License, 2011

Wastewater Collection Operator 1, 2011, WW0044811

Water Utilities Safety Certification, 2011

Cross Connection Control & Pumps Certification, 2009

Confined Space Entry Certification, 2008

#### PROFESSIONAL ENDEAVORS

Enprotec / Hibbs & Todd, Inc.  
Construction Inspector  
Abilene, Texas  
2017 - present

PSI Groundworks, Inc.  
Contractor/Owner  
Lubbock, Texas  
2015 - 2017

City of Lubbock  
Senior Construction Inspector  
Lubbock, Texas  
2011 - 2015



REQUEST FOR QUALIFICATIONS FOR ENGINEERING SERVICES  
TEXAS COMMUNITY DEVELOPMENT BLOCK GRANT PROGRAM  
March 6, 2023



## Riley Griffith, RPLS Surveying

### PROFESSIONAL EXPERIENCE

Mr. Griffith is the Survey Department Manager of Enprotec / Hibbs & Todd, Inc., and has 20 years experience in the field of land surveying. He has worked on residential and commercial land development projects; ALTA surveys; wind farms; oil and gas pipelines; oil field projects; water and sewer projects; a flood control dam; TxDOT ROW projects; Patent Surveys for the GLO; residential, commercial, and farm and ranch surveys. He has experience with pipeline route surveys, construction staking and ALTA surveys across West Texas, including boundary and topographic surveys; elevation certificates; ground bed surveys in Texas and Oklahoma; subdivision platting; and, oil well location staking.

### PROJECT EXPERIENCE

- Airport Lift Station Improvements, City of Midland
- Water Distribution System, City of Midland
- Wadley Elevated Storage Tank Improvements, City of Midland
- Northeast Water System Improvements, City of Midland
- Wadley Boosting Station, City of Midland
- Central Business District Street Repair, City of Abilene
- Convention Center Renovations, City of Abilene
- Fire Training Facility, City of Abilene
- Memorial Hospital District, City of Ballinger
- Hendrick South Medical Buildings
- Dyess Air Force Base Hospital Facilities, SES Construction and Fuel Services, LLC
- Stonewall County Nursing Facility
- Rehabilitation of Hospital of Abilene, Med Properties
- Fire Station #7, City of Abilene
- Abilene Law Enforcement Center, City of Abilene
- Tuscany Ridge Development
- ACU Irrigation Pump Station
- Hampton Hills Development
- Water System Improvements, City of Stamford
- Wylie ISD New Elementary School
- College Hills Boulevard Rehabilitation Project, City of San Angelo
- Hardin-Simmons University Moody Center and Behrens Auditorium
- Highway 18/36 Development, Development Corporation of Abilene



### EDUCATION

Bachelor of Science, Horticulture  
Texas A&M University, 1993

### REGISTRATIONS

Registered Professional Land  
Surveyor – Texas #4683, 2006; OK  
#1662

### PROFESSIONAL ENDEAVORS

Enprotec / Hibbs & Todd, Inc.  
Survey Department Manager  
Abilene, Texas  
2017 - present

RG Surveying, Inc.  
Owner  
2015 - 2017

West Company of Abilene Land  
Surveying  
Managing RPLS  
2006 - 2015

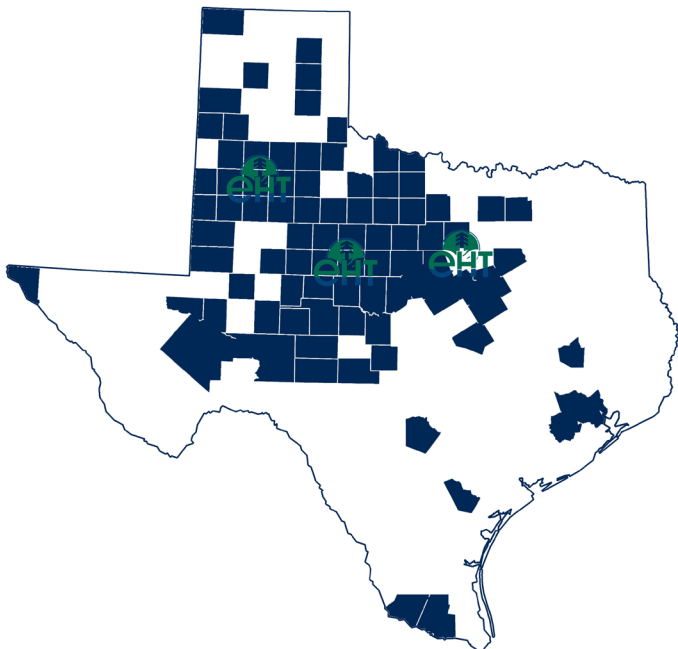




## WORK PERFORMANCE

### Regional Funded Projects

We have provided engineering services for a large part of Texas for TDA-funded projects. Our experience includes many successfully completed municipal infrastructure projects. The insight gained through this experience coupled with our level of service will allow us to provide a design that will meet the needs of the residents in the area. Our design will be cost effective, efficient and practical. The map below highlights areas of the State where we have provided engineering services for state or federally funded projects.



### Ability to Meet Schedules



Based on current staffing, existing projects and known awards, sufficient staff will be available during the time period of this contract. In the event of workload peaks or the need for specialized disciplines, eHT has access to additional employees to meet project requirements. eHT will commit the appropriate staff resources to meet necessary schedules. eHT assures that this project will be a priority and we will have the qualified staff necessary to ensure its success.



### Community Service Projects

We have provided engineering services for a large part of Texas for TDA-funded projects. Our experience includes many successfully complete

eHT regularly assists our clients with community service programs such as Supplemental Environmental Projects (SEPs) which reduce the amount of pollution reaching the environment and enhance the quality of the environment in the community. Additionally, we regularly assist our clients with community outreach and public information pertaining to projects that impact residents, as well as community impact programs such as citywide cleanup projects.



### Federally Funded Construction Projects

The ability to identify and provide a funding source for public improvements is both critical and necessary in today's tight financial markets. Municipalities and counties need a consultant that not only knows how to get the funding but has an in-depth understanding of the program and agency as well. For over 30 years, eHT has been successful in helping our clients apply for and receive funding for critical public works projects.

We have experience with the following programs:

- Texas Water Development Board (TWDB)
- Texas Department of Rural Affairs (TDRA)
- USDA Rural Development (RD)
- Economic Development Administration (EDA)
- North American Development Bank (NADBank)
- South Texas Development Council (STDC)
- Texas Department of Transportation (TxDOT)
- Texas Parks and Wildlife Department (TPWD)



### Cost Control

Cost control is achieved by:

- 1) close coordination with the client for input and to ensure the client's needs are being accurately addressed;
- 2) project cost estimates produced by experienced professionals; and,
- 3) attention to detail in preparation of construction



Our “commitment” to cost control is best illustrated with our water / wastewater treatment projects.

**New Treatment Plants.** Typically, new treatment plants are constructed on vacant sites with little or no “unknowns”. Our projects under construction are 2% below project cost estimates, with a combined Change Order amount of less than 0.2% of the construction contract amounts.

**Plant Renovations and Expansions.** These type projects have a greater degree of unknowns than “new” projects. These “unknowns” impact not only cost estimates developed for the project, but Change Orders during construction. Our emphasis on developing accurate cost estimates during the planning phase resulted in construction contracts approximately 1.5% less than presented in the estimates.



## Labor Resources

eHT can be supplemented and supported by other professionals within the company to handle peaks and illness. We do not anticipate substantial attrition. We have a very stable and cohesive group of employees. In the event that the Principal-in-Charge or Project Manager are not available during the performance period, their responsibilities will be assumed by other officers of eHT.

eHT is prepared to increase staff as necessary to complete projects to the satisfaction and expectations of the client. This is a high priority project for our company and we will not accept additional projects that could adversely affect our ability to meet the demands of this project.



## Quality of Work

eHT has managed more TDA-funded projects than most engineering firms in the state. As such, we have a vast array of experience designing and managing all types of water, wastewater and infrastructure improvement projects.

## Project Approach

**Agency Involvement.** Our engineers will work closely with client representatives during the entire project. Clear communication and close coordination during the project will be critical for its success. There are several methods for establishing strong communication including using established communications procedures, specific TxCDBG protocol and a Strategic Decision Group.

**Strategic Decision Group.** eHT has informally implemented a Strategic Decision Group on each of our TDA-funded projects. The Client, Grant Consultant and Engineer have worked together to keep the projects free of “snags” and on target. Construction firm principals will be added at the appropriate time. This decision-making group will anticipate “snags” and inefficiencies in the project and resolve any major problems that may arise. This will help avoid long periods of downtime that often result because of lengthy negotiations and ineffective decision-making. This group’s purpose is to keep the project on target.

**Stakeholder Input.** We advocate incorporating local input from the Client on important project decisions and options. Our experience indicates this level of communication and helps to provide a project that will meet the local needs. We feel Client leadership helps to shape the outcome of the project.

We accomplish this by:

- Providing frequent technical briefings regarding the details of the project.
- Providing field tours for Client representatives to view proposed equipment and processes.
- Ensuring critical project decisions are made by the Client and implemented by the design team.

As your consulting partner, the first step will be to meet with your staff and review the objectives for your project. A preliminary engineering report (PER) will be prepared to evaluate existing conditions, alternatives and associated costs.

The Client’s needs and desires must be integrated into the project from the start. Input concerning functional issues during design and construction phases will result in a more “user-friendly” system. Our staff will maintain constant communication, focusing on sensitive issues and potential roadblocks to success.

### Task 1.0: Preliminary Engineering Report

- Consult with the Client to determine specific needs and requirements.
- Prepare a preliminary engineering study and report on the project in sufficient detail to indicate problems involved and the alternate solutions available to the Client, to include schematic layouts and sketches, general cost projection for the Project and a schedule to set forth the Engineer’s recommendations.
- Determine whether or not the project requires acquisition of property. Make any necessary surveys of existing right-of-way, topography, utilities, or other field data required for proper design of the project.



Provide consultation and advise as to the necessity of the Client providing or obtaining other services such as auger borings, core borings, soil tests, or other subsurface explorations; laboratory testing and inspecting of samples or materials; other special consultations; and act as the Client's representative in connection with any such services.

D. Determine whether or not the project requires acquisition of property and if applicable furnish to the locality: Legal Description of Parcels to be acquired; Map showing entire tract with designation of part to be acquired.

### **Task 2.0: Design Plans and Specifications**

A. On the basis of the approved preliminary design documents and preliminary engineering findings, we prepare detailed construction drawings and specifications for the Project.

B. Furnish engineering data that will assist in the preparation of the required documents to secure approval of such governmental authorities as have jurisdiction over design criteria applicable to the Project for the Client. Special considerations include obtaining approval of plans and specifications by the Texas Commission on Environmental Quality (TCEQ), Austin, Texas.

C. Advise the Client of any adjustment to the cost projection for the Project caused by changes in scope, design requirements, or construction costs and furnish a revised cost projection for the Project based on the completed drawings and specifications.

### **Task 3.0: Bid Administration**

A. Prepare Bid Packet/Contract Documents.

B. Place advertisement/solicitation (advertised in newspaper of general circulation for two consecutive weeks at minimum).

C. Issue addenda for any necessary clarification of bid documents including incorporation of any wage rate modifications (if applicable).

D. Open bids (bid opening to be held at least two weeks from publication date of first advertisement).

E. Tabulate bids (include completeness and eligibility screening).

F. Announce lowest and best bid, if applicable (at bid opening). If required, issue a rejection of all bids and re-advertise bids.

G. Conduct construction Contractor eligibility verification.

H. Approve contract award by local governing body.

### **Task 4.0: Construction Phase - Field Testing and Inspection**

A. Direct and hold a pre-construction conference with Client representatives, Contractor and Engineer.

B. Issue Notice to Proceed to construction to Contractor.

C. Establish Progress Payment Schedule and construction for Contractor's submittal of cost estimates.

D. Process and submit Change Orders.

E. Perform site visits and observations (by Project Engineer).

F. Check samples, catalog data, shop drawings, laboratory and mill tests of materials and equipment and other data which the Contractor is required to submit, only for the conformance with the design concept of the Project and compliance with the information given by the plans, specifications and contract documents.

G. Based on the Consultant's on-site observations as an experienced and qualified design professional and on the Consultant's review of the Contractor's Applications for Payment, determine the amount owed to the Contractor in such amounts.

H. Prepare Certificate of Construction Completion.

I. Prepare resolution for consideration by the locality for acceptance of the completed Project.

### **Task 5.0: Closeout Phase**

A. Conduct, in company with Client representative(s), a final inspection of the Project for conformance with the design concept of the Project, and compliance with the plans, specifications, and contract documents, and recommend in writing, final payment to the Contractor.

B. Make an inspection of the Project prior to expiration of the warranty period and report observed discrepancies under warranty provided by the construction contract.

C. Furnish the Client a set of record prints of drawings and addendum drawings showing those changes made during the construction period, based upon the marked up prints, drawing and other data furnished by the Contractor which the Consultant considers to be significant.

### **Deliverables**

eHT will provide plans, specifications and executed documents as determined by the Client, but typically include: Two sets of final plans and specifications during the bid process; Three sets of executed contract documents; and, One set of drawings of record.

eHT follows the standard project implementation schedule for TDA-funded projects including specific milestone dates set forth by the funding agency.







---

## AFFIRMATIVE ACTION

It is the policy of Enprotec / Hibbs & Todd, Inc. to afford equal opportunity of employment to all individuals regardless of race, color, religion, sex, or national origin. The Company will take affirmative action to ensure that it will:

1) Recruit, hire and promote all job classifications without regard to race, color, religion, sex, or national origin.

2) Base decisions on employment so as to further the principle of equal employment opportunity.

3) Ensure that promotion decisions are in accord with principles of equal employment opportunities.

The successful achievement of nondiscriminatory employment programs requires maximum cooperation between management and employees. In fulfilling its part in this cooperative effort, management is obliged to lead the way by establishing and implementing affirmative procedures and practices which will insure objectives, namely, equitable employment opportunity for all.

I certify that the officers of this company will direct the establishment of and monitor the implementation of personnel procedures to guide our affirmative action program.



Scott F. Hibbs, PE  
President



**REGISTRATION**



# SYSTEM FOR AWARD MANAGEMENT

Last updated by Jessica Long on Dec 07, 2022 at 09:38 AM

ENPROTEC / HIBBS & TODD, INC.



## ENPROTEC / HIBBS & TODD, INC.

Unique Entity ID <b>DLNUVLRUVW17</b>	CAGE / NCAGE <b>OHLV8</b>	Purpose of Registration <b>All Awards</b>
Registration Status <b>Active Registration</b>	Expiration Date <b>Dec 7, 2023</b>	
Physical Address <b>402 Cedar ST STE Lower Abilene, Texas 79601-5734 United States</b>	Mailing Address <b>P.O. Box 3097 Abilene, Texas 79604-3097 United States</b>	

### Business Information

Doing Business as <b>Geotec Labs</b>	Division Name <b>(blank)</b>	Division Number <b>(blank)</b>
Congressional District <b>Texas 19</b>	State / Country of Incorporation <b>Texas / United States</b>	URL <b>http://www.e-ht.com</b>

### Registration Dates

Activation Date <b>Dec 9, 2022</b>	Submission Date <b>Dec 7, 2022</b>	Initial Registration Date <b>Apr 12, 2002</b>
---------------------------------------	---------------------------------------	--

### Entity Dates

Entity Start Date <b>Jan 1, 1989</b>	Fiscal Year End Close Date <b>Dec 31</b>
---	---

### Immediate Owner

CAGE <b>(blank)</b>	Legal Business Name <b>(blank)</b>
------------------------	---------------------------------------

### Highest Level Owner

CAGE <b>(blank)</b>	Legal Business Name <b>(blank)</b>
------------------------	---------------------------------------

### Executive Compensation

In your business or organization's preceding completed fiscal year, did your business or organization (the legal entity to which this specific SAM record, represented by a Unique Entity ID, belongs) receive both of the following: 1. 80 percent or more of your annual gross revenues in U.S. federal contracts, subcontracts, loans, grants, subgrants, and/or cooperative agreements and 2. \$25,000,000 or more in annual gross revenues from U.S. federal contracts, subcontracts, loans, grants, subgrants, and/or cooperative agreements?

**No**

Does the public have access to information about the compensation of the senior executives in your business or organization (the legal entity to which this specific SAM record, represented by a Unique Entity ID, belongs) through periodic reports filed under section 13(a) or 15(d) of the Securities Exchange Act of 1934 (15 U.S.C. 78m(a), 78o(d)) or section 6104 of the Internal Revenue Code of 1986?

**Not Selected**

### Proceedings Questions

Is your business or organization, as represented by the Unique Entity ID on this entity registration, responding to a Federal procurement opportunity that contains the provision at FAR 52.209-7, subject to the clause in FAR 52.209-9 in a current Federal contract, or applying for a Federal grant opportunity which contains the award term and condition described in 2 C.F.R. 200 Appendix XII?

**No**

Does your business or organization, as represented by the Unique Entity ID on this specific SAM record, have current active Federal contracts and/or grants with total value (including any exercised/unexercised options) greater than \$10,000,000?

**Not Selected**

Within the last five years, had the business or organization (represented by the Unique Entity ID on this specific SAM record) and/or any of its principals, in connection with the award to or performance by the business or organization of a Federal contract or grant, been the subject of a Federal or State (1) criminal proceeding resulting in a conviction or other acknowledgment of fault; (2) civil proceeding resulting in a finding of fault with a monetary fine, penalty, reimbursement, restitution, and/or damages greater than \$5,000, or other acknowledgment of fault; and/or (3) administrative proceeding resulting in a finding of fault with either a monetary fine or penalty greater than \$5,000 or reimbursement, restitution, or damages greater than \$100,000, or other acknowledgment of fault?

**Not Selected**

### Exclusion Summary

<https://sam.gov/entity/DLNUVLRUVW17/coreData?status=Active>

Page 1 of 4



REQUEST FOR QUALIFICATIONS FOR ENGINEERING SERVICES  
TEXAS COMMUNITY DEVELOPMENT BLOCK GRANT PROGRAM  
March 6, 2023



**TDA TXCDBG CERTIFICATION**



TEXAS DEPARTMENT OF AGRICULTURE  
COMMISSIONER SID MILLER

**Joe Mangrem**

This is to certify that the above named individual has completed the  
Texas Department of Agriculture's  
Texas Community Development Block Grant Implementation  
Exam And is certified to Administer TxCDBG contracts for 2021.

Awarded on February 10, 2021

Suzanne Barnard Director for Community Development Block Grant Program

Joe Mangrem, PE, is a Project Manager with eHT.





Certification Regarding Lobbying

(To be submitted with each bid or offer exceeding \$100,000)

The undersigned certifies, to the best of his or her knowledge and belief, that:

- (a) No Federal appropriated funds have been paid or will be paid, by or on behalf of the undersigned, to any person for influencing or attempting to influence an officer or employee of an agency, a Member of Congress, an officer or employee of Congress, or an employee of a Member of Congress in connection with the awarding of any Federal contract, the making of any Federal grant, the making of any Federal loan, the entering into of any cooperative agreement, and the extension, continuation, renewal, amendment, or modification of any Federal contract, grant, loan, or cooperative agreement.
- (b) If any funds other than Federal appropriated funds have been paid or will be paid to any person for influencing or attempting to influence an officer or employee of any agency, a Member of Congress, an officer or employee of Congress, or an employee of a Member of Congress in connection with this Federal contract, grant, loan, or cooperative agreement, the undersigned shall complete and submit Standard Form-LLL, "Disclosure Form to Report Lobbying," in accordance with its instructions.
- (c) The undersigned shall require that the language paragraph 1 and 2 of this anti-lobbying certification be included in the award documents for all subawards at all tiers (including subcontracts, subgrants, and contracts under grants, loans, and cooperative agreements) and that all subrecipients shall certify and disclose accordingly.

This certification is a material representation of fact upon which reliance was placed when this transaction was made or entered into. Submission of this certification is a prerequisite for making or entering into this transaction imposed by 31, U.S.C. § 1352 (as amended by the Lobbying Disclosure Act of 1995).

The Contractor, Enprotec / Hibbs & Todd, Inc., certifies or affirms the truthfulness and accuracy of each statement of its certification and disclosure, if any. In addition, the Contractor understands and agrees that the provisions of 31 U.S.C. § 3801 et seq., apply to this certification and disclosure, if any.

*Sage Diller*

Signature of Contractor's Authorized Official

Sage Diller, PE, Associate Vice President

Printed Name and Title of Contractor's Authorized Official

March 6, 2023

Date



**CONFLICT OF INTEREST QUESTIONNAIRE**  
**For vendor doing business with local governmental entity**

**FORM CIQ**

This questionnaire reflects changes made to the law by H.B. 23, 84th Leg., Regular Session.

This questionnaire is being filed in accordance with Chapter 176, Local Government Code, by a vendor who has a business relationship as defined by Section 176.001(1-a) with a local governmental entity and the vendor meets requirements under Section 176.006(a).

By law this questionnaire must be filed with the records administrator of the local governmental entity not later than the 7th business day after the date the vendor becomes aware of facts that require the statement to be filed. See Section 176.006(a-1), Local Government Code.

A vendor commits an offense if the vendor knowingly violates Section 176.006, Local Government Code. An offense under this section is a misdemeanor.

**OFFICE USE ONLY**

Date Received

**1** Name of vendor who has a business relationship with local governmental entity.

Enprotec / Hibbs & Todd, Inc.

**2**  Check this box if you are filing an update to a previously filed questionnaire. (The law requires that you file an updated completed questionnaire with the appropriate filing authority not later than the 7th business day after the date on which you became aware that the originally filed questionnaire was incomplete or inaccurate.)

**3** Name of local government officer about whom the information is being disclosed.

\_\_\_\_\_  
 Name of Officer

**4** Describe each employment or other business relationship with the local government officer, or a family member of the officer, as described by Section 176.003(a)(2)(A). Also describe any family relationship with the local government officer. Complete subparts A and B for each employment or business relationship described. Attach additional pages to this Form CIQ as necessary.

A. Is the local government officer or a family member of the officer receiving or likely to receive taxable income, other than investment income, from the vendor?

Yes  No N/A

B. Is the vendor receiving or likely to receive taxable income, other than investment income, from or at the direction of the local government officer or a family member of the officer AND the taxable income is not received from the local governmental entity?

Yes  No N/A

**5** Describe each employment or business relationship that the vendor named in Section 1 maintains with a corporation or other business entity with respect to which the local government officer serves as an officer or director, or holds an ownership interest of one percent or more.

**6**  Check this box if the vendor has given the local government officer or a family member of the officer one or more gifts as described in Section 176.003(a)(2)(B), excluding gifts described in Section 176.003(a-1).

**7** Sage Dill  
 Signature of vendor doing business with the governmental entity

March 6, 2023  
 \_\_\_\_\_  
 Date

