

STATEMENT OF QUALIFICATIONS

CITY OF BRECKENRIDGE

REQUEST FOR QUALIFICATIONS FOR ENGINEERING FOR TXCDBG PROJECT

JANUARY 23, 2025



Enprotec | **Hibbs & Todd**

Abilene | Lubbock | Granbury

PE Firm Registration No. 1151

PG Firm Registration No. 50103

RPLS Firm Registration No. 10011900

Corporate Headquarters

402 Cedar Street

Abilene, Texas 79601

T: (325) 698-5560

F: (325) 690-3240

www.e-ht.com

January 23, 2025

City of Breckenridge
Attn: Cynthia Northrop
City Manager
105 N. Rose Ave.
Breckenridge, Texas 76424
cnorthrop@breckenridgetx.gov

Re: Request for Qualifications for Engineering Services TxCDBG Project

Dear Ms. Northrop:

Enprotec / Hibbs & Todd, Inc. (eHT) is pleased to submit the qualifications of our firm to the City of Breckenridge (City) for consideration to provide professional engineering services for the TxCDBG project. We are committed to providing the City with the highest quality of professional services and consulting for this important and timely project.

Our Abilene, Granbury and Lubbock offices are staffed with highly-skilled engineers, scientists, surveyors, construction management personnel and technicians that stand ready to work on this project. Further, you will be personally taken care of by principals of our firm. We have provided engineering and scientific services to numerous entities and municipalities in the region over the past 35 years, and our company is well staffed to handle your project.

We feel that our firm is best suited to assist the City. Should additional information be desired, please don't hesitate to contact me.

Sincerely,
Enprotec / Hibbs & Todd, Inc.



Sage Diller, PE
Vice President



TABLE OF CONTENTS

Profile

- About eHT
- Client Vision Statement
- Funding Objectives & Sources
- Company Principals
- eHT Services

Experience

- Funded Project Experience
- Relevant Experience

Capacity to Perform

- Organizational Chart
- Team Experience
- Key Personnel

Work Performance

- Regional Funded Projects
- Ability to Meet Schedules
- Community Service Projects
- Federally Funded Construction Projects
- Cost Control
- Permitting & Regulatory Compliance
- Labor Resources
- Quality of Work
- Project Approach

Appendix

- Insurance
- Affirmative Action
- Registration
- System for Award Management
- Certification Regarding Lobbying
- Conflict of Interest Questionnaire

PROFILE

About eHT

Enprotec / Hibbs & Todd, Inc. (eHT) is a civil, municipal, environmental and geotechnical engineering firm with offices in Abilene, Granbury and Lubbock in the State of Texas. Our staff consists of engineers, surveyors, geologists, scientists, construction material lab technicians and field operations professionals.

Our success is based on enduring partnerships with our clients. eHT professionals bring a solid foundation of expertise and innovation to each client's project.

Client Vision Statement

Our goal is to be an organization where we attract clients with whom we can create enduring relationships. We want our clients to feel that we care about them personally and to view our people as being knowledgeable (experts) and honest. We desire to be a "user-friendly" company, providing clear, informative communication and quality work. We define product quality as timely, accurate and complete work. We define service quality as being dependable, trustworthy and confident in our work.

eHT is a forward-thinking and progressive team of engineers and scientists with deep industry expertise, knowledge and resources. We understand the importance of being a consulting firm that clients can depend on for knowledge and expertise.

More than 80% of our business comes from repeat clients. We feel that in order to take care of our clients, we must learn their business. We realize that we are working for you, and for the citizens you serve as well.

We are in the business of improving community infrastructure while creating sustainable development and preserving some of our most prized natural resources. In essence, we offer engineering solutions with a view for tomorrow.

With offices serving Texas, our resources are strategically located to meet our clients' need for personal and reliable service. Each of our offices has a unique set of skill sets that complement each other. We have helped our clients place the past behind them, manage the present and plan for a profitable future. Our diverse staff of professionals is one of our greatest assets. Our people care about their work and their relationships with clients. From planning to completion, each project is personally handled by people who know our clients and their businesses. Our staff of engineers and professionals provides clients with practical, cost-effective engineering solutions.



Resources

High Senior Staff Interaction

Regional Texas Offices

Diverse Expertise Across Texas

Low Overhead

Engineering-Science-Operations Mix

System Operators on Staff

Emphasis on Relationships

Regulatory Agency Relationships

Funding Agency Relationships

Client Commitment

Experienced Attention to Project Needs and Goals

Partnership, Advocacy and Planning

Client Benefits

Appropriate Attention to Project Needs and Goals

Higher Personal Interaction and Responsiveness

Solid Advice to Clients on Infrastructure Issues

Efficient and Effective Design and Construction

User-Friendly Engineering Design

Efficient and Effective Funding Agency Coordination

Our experience with mid-sized clients provides a customized approach – ONE SIZE DOES NOT FIT ALL!

**WE ARE IN THE BUSINESS OF IMPROVING
COMMUNITY INFRASTRUCTURE WHILE
CREATING SUSTAINABLE DEVELOPMENT
AND PRESERVING SOME OF OUR
MOST PRIZED NATURAL RESOURCES.
IN ESSENCE, WE OFFER ENGINEERING
SOLUTIONS WITH A VIEW FOR
TOMORROW.**

Funding Objectives and Sources

Engineering and construction services funded under the Texas Department of Agriculture (TDA) can improve, modernize and expand local resources enabling entities to accommodate current and future needs of the community. eHT has extensive experience with TDA-funded projects and processes. You can rely on our services to assist in the application process and you can rely on our expertise to deliver sound engineering projects. Our project team has a long-term record of experience with state and federal funding agency requirements to manage projects without unnecessary delays. An important aspect of working with local governments is understanding the funding mechanisms and programs. eHT has been involved over the past 30 years in helping municipalities and counties obtain the necessary funding they need for their public works projects.

We have experience with the following programs and agencies:

- Texas Department of Agriculture (TDA): Community Development Fund (CD), Community Development Block Grant (CDBG), Texas Capital Fund (TCF), Colonia Planning Fund (CPF), Colonia Construction Fund (CFC), Colonia Economically Distressed Areas Program (CEDAP), Planning and Capacity Building Fund (PCB), Disaster Relief Fund (DR), Urgent Need (UN), Small Towns Environment Program (STEP), Renewable Energy Demonstration Pilot Program (REDPP), American Recovery & Reinvestment Act (ARRA), Disaster Recovery, Renewable Energy
- Texas Water Development Board (TWDB): Economically Distressed Areas Program (EDAP), Drinking Water State Revolving Fund (DWSRF), Clean Water State Revolving Fund (CWSRF), Rural Water Assistance Fund, Water Infrastructure Fund, State Participation Program-Regional Water and Wastewater Facilities, Regional Facility Planning Grant Program, Texas Water Development Fund (DFund)
- USDA Rural Development (RD)
- Economic Development Administration (EDA)
- North American Development Bank (NADBank)
- South Texas Development Council (STDC)
- Texas Department of Transportation (TxDOT)
- Texas Parks and Wildlife Department (TPWD)

Company Principals

Scott F. Hibbs, PE, CEO	Jordan S. Hibbs, PE, President
Keith P. Kindle, PE, VP	Brad Evans, CPA, CFO
Scott Yungblut, PE, VP	Sage Diller, PE, VP
Chris S. Hay, PE, VP	Colden S. Rich, VP

eHT Services

General Civil

Street, Paving, Grading and Drainage Design
Land Development
Stormwater Management
Park and Trail Design
Municipal Pool Design
Athletic Facilities
Downtown Revitalization and Sidewalk Improvements

Construction Management and Inspection

Construction Administration and Management
Peer Review
Bidding Support
Start-up Support
Construction Support
Resident Construction Inspection

Water Resources

Water Supply Planning
Development of Water Supplies
Water Transmission / Distribution
Water Treatment
Elevated / Ground Storage
Pump Station Design and Improvements

Wastewater Services

Wastewater Treatment
Wastewater Collection and Transmission
Reclaimed Water
Wastewater Master Planning

Assessment Services

Monitoring Programs
Feasibility Studies
Risk-Based Assessments
TRRP Assessments
Air Quality Sampling
Water and Soil Sampling
Subsurface and Groundwater Assessments
Phase I and II Transaction Assessments
Indoor Air Quality Assessments
Pollution Prevention

Regulatory Compliance

Process Safety Management
Risk Management Plans
Compliance Audits
Sara Title III Compliance
Regulatory Agency Interface
NEPA Environmental Documents

Remediation Services

Corrective Action Plans
Feasibility Studies
Pilot Tests
Groundwater Recovery
Implementation of Remedial Technologies such as Vapor Extraction, Bioremediation, Soil Venting, Air Sparging
Water, Soil and Air Treatment
Plume Stability Monitoring
Closure Plans

Geotechnical Engineering

Subsurface Explorations - Borings
Soil Property Evaluations
Foundation Recommendations
Pavement Recommendations
Roadway and Parking Lot Upgrades

Solid / Hazardous Waste

Landfill Design and Permitting
Solid Waste Planning
Landfill Construction Quality Control and Assurance
Soil Liner Evaluations, Inspections and Reports
Landfill Closure / Post Closure Monitoring
Hazardous Waste Management Plans
RCRA Facility Permitting
TSD Facility Audits
Air Quality Sampling
Water and Soil Sampling
Aquifer Testing
Soil Vapor Surveys
Subsurface and Groundwater Assessments

Permitting

Domestic Wastewater Permitting
Industrial Wastewater Permitting
Air Permitting
Solid / Hazardous Waste Permitting
Development of CT Studies for Potable WTPs

Pollution Prevention Services

Recycling and Resource Recovery
Waste Stream Reduction and Alternatives
Stormwater Management
Pollution Prevention Plans
Spill Prevention Control and Countermeasure Plans

Mold Consulting

Sampling and Testing
Mold Inspection and Assessment
Mold Remediation Plans

Surveying Services

Boundary, Topographic, Route, ALTA/ACSM, Plats/Maps

Contract Operations

Surface and Groundwater Treatment Plant Operations
Wastewater Treatment Plant Operations
Water Distribution System Flushing Programs
Public Water System Tank Inspections
Monthly, Quarterly and Annual Monitoring and Reports
Collection and Analysis of Compliance Samples
Organizing and Digitizing Plant Information
Optimizing and Troubleshooting Chloramine Residuals
Identifying and Resolving System and Water Quality Issues
Monitoring Plans, Laboratory Approval and NAPs
Water and Wastewater Facilities Startup and Commissioning
Production of Operations and Maintenance Manuals
Response Measures to TCEQ Issued Violations
Alternative Capacity Requirements for Public Water Systems
Water Conservation and Drought Contingency Plans and Annual Water Conservation Reporting
Risk Management Plans (RMP) and RMP Training
Emergency Response Plans

Asbestos Consulting

Building / Facility Surveys
Condition Assessments
Bulk Sample Collection
Preparation of Operation and Maintenance Programs
Asbestos Abatement Project Design & Specifications
Asbestos Abatement Contractor Bid Evaluation
Abatement Monitoring and Administration
Hazard Awareness Training and Consulting
OSHA Compliance Consulting
AHERA Compliance Consulting
NESHAP Compliance Consulting

Construction Materials Testing

Material Sampling
Concrete Mix Design
Concrete Cylinders and Beams
Slump Testing
Air Content Testing
Plant Inspection
Moisture Contents
Atterberg Limits Testing
Sieve Analysis
Specific Gravity and Absorption
Proctor Information
Field Density Testing
Core Sampling
Wet Ball Mill Testing
Soundness Testing
Abrasion Testing
CBR Testing
Hot Mix Design

EXPERIENCE Experience with Federal and Grant Programs Past 10 Years

City of Abilene	2018 TWDB Water Meter Replacement
Acton MUD	2022 TWDB Wastewater Treatment Plant #1 2022 TWDB Wastewater Treatment Plant #2
City of Alamo	2022 TWDB Wastewater Treatment Plant
City of Albany	2023 TWDB Water System Improvements 2023 CDBG Street Improvements
Arimak WSC	2023 TWDB Water System Improvements
City of Ballinger	2022 ARPA Water Meter Replacement 2021 CDBG Paving Improvements
City of Beeville	2018 TWDB WTP Improvements
City of Big Lake	2022 ARPA Water System Improvements 2021 CDBG Water Line Improvements 2017 CDBG Water System Improvements
City of Blanket	2022 CDBG Water System Improvements
City of Brady	2022 TWDB and EDAP Radium Reduction Project
City of Breckenridge	2023 CDBG Downtown Revitalization Project 2022 TWDB Water System Improvements 2022 ARPA Water Meters and Lift Station 2021 TWDB Wastewater Improvements 2016 TWDB Wastewater Treatment Plant 2015 TWDB Water Treatment Plant
City of Brownfield	2018 TDA Downtown Revitalization Project
City of Brownwood	2023 CDBG Water and Sewer Improvements
City of Cisco	2022 TWDB WWTP Improvements 2018 TWDB Water Treatment Plant 2018 CDBG Paving Improvements 2017 FEMA HGMP Emergency Sirens 2016 TWDB Water Treatment Plant
City of Coahoma	2022 USDA RD Wastewater Improvements 2020 CDBG Wastewater Treatment Plant Imp.
Corix Utilities - Lometa	2023 TWDB Lometa Water Treatment Plant
Crockett County WCID1	2016 CDBG Sewer Line Improvements
City of Eden	2023 TWDB Water System Improvements 2020 CDBG Water Line Improvements 2019 USDA RD Water and Wastewater System 2015 CDBG Water Line Replacement
City of Eastland	2022 TWDB FIF Flood Study 2021 GLO Flood Mitigation Improvements 2018 TWDB Water System Improvements 2017 CDBG WWTP Improvements 2016 TWDB Wastewater Treatment Plant
Eastland County (ECWSD)	2021 GLO Flood Mitigation Improvements 2019 TWDB Water System Improvements 2017 CDBG Water Lines
City of Evant	2016 CDBG Water System Improvements
Fisher County	2021 CDBG Water Line Improvements
City of Glen Rose	2020 CDBG Street and Drainage Improvements 2018 TWDB Collection System Improvements 2016 CDBG Water System Improvements
City of Granbury	2022 CDBG Drainage Improvements 2021 ARPA Lift Station Improvements 2018 TWDB Water Treatment Plant Expansion 2018 TWDB Wastewater Treatment Plant 2017 TWDB Water System Improvements 2016 TWDB Meter Replacement Project 2016 TCF Water System Improvements
Hawley WSC	2016 CDBG Water System Improvements
Hood County	2021 CDBG Pump Systems 2015 CDBG Sewer System Improvements
Johnson County SUD	2019 TWDB Water System Improvements
Jones County	2016 CDBG Water System Improvements
Lake Alan Henry Water District	2023 USDA RD Water System Improvements

City of Leakey	2024 CDBG Downtown Sidewalk Improvements 2023 CDBG System Improvements
City of Loraine	2021 CDBG Water System Improvements 2021 CDBG Comprehensive Plan 2017 CDBG Water System Improvements
City of Malone	2015 TWDB Water System Improvements
City of Mason	2023 CDBG Wastewater System Improvements 2017 TWDB Water Treatment Project
City of Mertzton	2023 TWDB Water Treatment Improvements 2022 TWDB Wastewater Improvements 2016 CDBG Water and WW Improvements
City of Mineral Wells	2017 CDBG Water System Improvements
Mullin ISD	2022 TWDB Water System Improvements
City of New Deal	2019 CDBG Water System Improvements 2018 TWDB Water System Improvements
City of Paducah	2020 TWDB Water System Improvements
Parker County SUD	2023 TWDB Water Treatment Plant 2022 TWDB Water System Improvements
Town of Pecos City	2019 TWDB Wastewater System Improvements
Pecos County	2017 CDBG Water Transmission Line 2014 CDBG Water System Improvements
Reagan County	2022 TxDOT Street Improvements 2021 TxDOT Street Improvements 2020 TxDOT Street Improvements 2016 TxDOT Street Improvements
City of Robert Lee	2022 ARPA Project
City of Roma	2022 TWDB Wastewater Treatment Plant 2020 CDBG Paving Improvements 2017 CDBG Paving Improvements 2015 TWDB Regional Water System
Rolling Shores Water	2022 TWDB/FEMA Water System Improvements
City of Roscoe	2021 ARPA Water System Improvements 2019 TWDB Water Distribution Improvements 2016 TWDB Wastewater Collection System
Rowena WSC	2023 TWDB Water System Improvements
City of San Angelo	2019 TWDB Groundwater Supply Project
City of Santa Anna	2022 ARPA Wastewater Improvements 2019 CDBG Wastewater System Improvements
Scurry County	2016 TxDOT Street Improvements
City of Seminole	2022 ARPA System Improvements 2022 CDBG Drainage Improvements
City of Slaton	2024 CDBG Drainage Improvements
City of Smyer	2022 USDA RD Application
City of Sonora	2022 ARPA Sewer System Improvements
City of Spur	2019 CDBG Water and Sewer Improvements
City of Stamford	2023 CDBG Downtown Revitalization Project 2023 CDBG Water System Improvements 2016 TWDB Water System Improvements
Sutton County	2020 CDBG Wastewater Improvements
City of Sweetwater	2022 APRA Emergency Generator 2020 TWDB Water System Improvements 2020 TWDB Wastewater System Improvements 2018 CDBG Water Line Replacement 2016 TWDB Water System Improvements
City of Texico	2017 CDBG Wastewater System Improvements
City of Tye	2022 CDBG Water System Improvements
ULRMWD	2022 TWDB Water System Improvements
Westbound WSC	2023 TWDB Water System Improvements

City of Breckenridge Experience

ARPA Water and Wastewater System Improvements

eHT provided project management for a water and wastewater improvement project utilizing ARPA funds which included AMR meter replacement and AMI meter replacement project, as well as lift station rehabilitation that included the retrofit of lift station 4 from a self-priming pump configuration to a submersible pump configuration and the replacement of existing self-priming pumps at lift station 4.

TXDOT US 183 North Sewer Relocation

The City of Breckenridge (City) contracted with eHT to provide project management, design, and construction administration for the replacement of all existing sewer lines within the TxDOT right-of-way in preparation for the planned rehabilitation for US 183 North from the City's downtown area to north of the City Limits. The project included approximately 5,000 linear feet of 4-inch thru 15-inch SDR-26 PVC gravity sewer main along with steel encasement, manholes, service laterals and pavement replacement. The City contracted a utility contractor to construct the improvements and was reimbursed by TxDOT once complete. eHT coordinated with the TxDOT Brownwood District on behalf of the city from beginning to end. The project provided approximately \$1.4 million of improvements.

Drainage, Paving and Utilities Improvements

eHT provided project management, design, bid phase services, funding application support and construction administration services for this multi-faceted USDA-RD Parks Street project for the City of Breckenridge. The project included roadway rehabilitation including roadway excavation, new base material, grading, compaction, new hot mix asphalt and concrete pavement and new concrete curb and gutter. A storm drainage system was installed that includes curb inlets, grate inlets, pipe, junction boxes and outfalls. The project included the installation of new water lines and sewer lines in all areas of the paving project. 4,065 linear feet of 4-inch, 3,265 linear feet of 6-inch, 4,005 linear feet of 8-inch and 170 linear feet of 12-inch water lines were installed, as well as 1,050 linear feet of 6-inch, 555 linear feet of 8-inch and 5,750 linear feet of 10-inch sewer line. New driveway approaches and tie-ins to adjoining streets with 4,310 square yards of sidewalk replacement was also included in the project. The project was funded through United States Department of Agriculture (USDA) Rural Development (RD) funding. The project included a Traffic Control Plan and Stormwater Pollution Prevention Plan.

TXDOT US 180 Utility Relocation

eHT provided planning, design, project management, construction management, and inspection for water and sewer system relocations on US 180 in Breckenridge. The project included 230 linear feet (LF) of 8-inch, 861 LF of 10-inch, 76 LF of 15-inch, and 126 LF of 18-inch gravity sewer lines, as well as 9,198 LF of 6-inch, 2,031 LF of 8-inch, 751 LF of 10-inch, and 3,660 LF of 12-inch water line. The project included steel encasement for all highway crossings. The utility relocation work was included in the overall TxDOT roadway contract and eHT performed the design and construction management services on behalf of the City. eHT built a strong working relationship with the TxDOT Brownwood District during the successful completion of this project. The utility relocation portion of the project was approximately \$2 million.

Wastewater Treatment Plant Upgrade

To maintain compliance with the Texas Commission on Environmental Quality (TCEQ) regarding its wastewater system, the City of Breckenridge (City) selected eHT to provide design and construction management for an upgrade of its wastewater treatment plant (WWTP) to respond to challenges with infiltration and inflow (I/I) of water into the City's wastewater collection system, which led to excessive flow loading at the WWTP during wet weather events. Those high flows combined with the lack of solids storage at the WWTP resulted in violation of the Texas Pollutant Discharge Elimination System (TPDES) permitted effluent limits. The WWTP also received notices of violation (NOV) following recurring overflows, mostly due to an internal re-lift pump station failing to restart after power outages. The plant was also at risk for major permit violations since the WWTP only had one operable clarifier.

The completed project consisted of constructing a new clarifier at the south edge of the plant, converting the existing small clarifier to a sludge holding tank, and rehabilitating the rest of the plant. The completed project also included isolation of the unused filters, electrical and control system improvements, influent screening, installation of aspirating aerators to replace the old floating disc aerators, rehabilitation of the chlorine contact basin structure, plant water system improvements, RAS/WAS pumping rehabilitation, and installation of a backup generator.

Water Treatment Plant Improvements

eHT provided planning, design and construction services for improvements to the City of Breckenridge's 3.4 MGD surface water treatment plant (WTP). eHT designed and constructed improvements to the raw water piping, pretreatment units, clarifiers, filters, pump stations, chemical feed systems, and electrical and controls systems. The raw water piping improvements included the construction of new raw water metering stations, chemical injection points, flow control valves, and rapid mix basin improvements. Plate settler packs were added to the two clarifiers to increase the efficiency of the units while maintaining the existing sludge disposal systems. The plant utilizes two dual media filters which had recently been rehabilitated with the replacement of filter media. For this project, filter-to-waste piping was installed to increase the operational flexibility of the filters as well as the associated waste piping. Filtered water is pumped from a transfer pump station to the plant clearwell. The transfer pumps and associated discharge piping were also replaced. The existing high service pumps were improved with the installation of variable frequency drives (VFDs) for each of the pumps and one pump which was in disrepair was replaced. The project also included upgrading and expanding the chemical systems including the replacement of the chemical day tanks and chemical feed skids, as well as the replacement of the plant electrical system and supervisory control and data acquisition (SCADA) system.

Plan Review and Engineer of Record

eHT assists the City in review and coordination of planned commercial and residential developments, which includes plat review, utility system analysis, TxDOT coordination and many other services. In addition, eHT provides consulting services to the City when utility extensions and system upgrades are required for system upgrades. Service has also been provided to aid the Economic Development Corporation in mapping and planning efforts.

Water Treatment Plant Filter Assessment

eHT completed a filter rehabilitation project for the City of Breckenridge surface water treatment plant (WTP) that included initial filter assessments which indicated the need to replace the filter media. eHT assisted the City in preparing specifications for media replacement and provided engineering support through removal of the old media, inspection of the underdrain system and placement of the new media. At the request of the City, eHT returned in following years to conduct follow-up filter assessments to determine how the media was aging and to evaluate operational practices related to filter operation, backwash procedures and filter maintenance.

The City implemented modifications to filter operations to include shortening the backwash cycle and reducing the amount of filter washing to shorten and reduce the post-backwash turbidity spike. Other recommendations included that the bed expansion be measured on a monthly basis to determine if backwash rate modifications were warranted throughout the year on a seasonal basis.

CDBG Water Line Improvements

eHT provided planning, design and construction phase services for 3,505 linear feet of 6-inch and 200 linear feet of 4-inch water line. The project utilized funds from the Texas Department of Agriculture.

Downtown Revitalization Project

eHT provided planning, design and construction phase services for ADA sidewalk improvements including approximately 850 square yards of concrete sidewalk. The project included site demolition, handicap ramps, utility relocation, striping and other miscellaneous items.

CDBG Water Line Improvements

eHT provided planning, design and construction phase services for installation of C900 PVC water line, fire hydrants, gate valves, tapping sleeves and saddles, pavement replacement and related appurtenances. The project utilized funds from the Texas Department of Agriculture.

Additional Relevant Experience

Northeast Water System Improvements City of Midland



The City of Midland experienced a large amount of development growth in the northeast section of the water distribution area, defined as north of State Highway Loop 250 and east of Big Spring Street. The City hired eHT to provide professional services to plan and design water system improvements to support existing and expected future water system demands in this portion of the service area. The project included transmission system improvements to provide water supply from the Water Purification Plant to the area. Additional project elements included pump station improvements and an elevated storage tank (EST) to provide storage and pressure in the project area. Distribution system improvements were also incorporated to connect the system with the new elevated storage tank. The project design included approximately 50,000 linear feet (LF) of 24-inch transmission piping and 18,000 LF of 30-inch transmission piping, encased highway boring, air release valves, a 2 MG EST and high service pumps.

Contact: Carl Craig, PE, Director of Utilities, (432) 685-7937

Water System Improvements City of Granbury



eHT provided application support, project management, design and construction phase services for this water system improvement project funded through the Texas Water Development Board's (TWDB) Drinking Water State Revolving Fund (DWSRF) Program to implement improvements that account for the new 2.5 million gallons per day (MGD) water treatment plant (WTP), as well as the future WTP expansion.

CITY OF BRECKENRIDGE
REQUEST FOR QUALIFICATIONS FOR ENGINEERING SERVICES
TEXAS COMMUNITY DEVELOPMENT GRANT FUND PROGRAM
JANUARY 23, 2025

Project elements included:

- Scout Camp Pump Station and Distribution Improvements consisting of a new pump station, a pressure release valve (PRV) relocation and 21,400 linear feet (LF) of 16-inch water line.
- Hospital and Bridge Crossing Distribution System Improvements consisting of 10,400 LF of 20-inch water line.
- Lakewood Hills Distribution System Improvements consisting of 850 LF of 8-inch water line, a PRV and valve opening and closing.
- North Elevated Tank Distribution System Improvements consisting of 50 LF of 12-inch water line and valve improvements.
- Water Treatment Plant Distribution System Improvements consisting of 350 LF of 20-inch water line to replace an existing 8-inch water line in the area. The improvement aids the distribution of water leaving the WTP by carrying the water to several water mains along Highway 377. eHT implemented modeling to design these improvements which enhance the operation of Granbury's potable water distribution system.
- Loop 567 Water Distribution System Improvements consisting of 20,150 LF of 12-inch water line that was paid for by project savings from the original project scope above.

Contact: Rick Crownover, Assistant City Manager,
(817) 573-7030

Water System Improvements City of Sweetwater

eHT provided application support, project management, design and construction phase services for this water system improvement project funded through the Texas Water Development Board's (TWDB) Drinking Water State Revolving Fund (DWSRF) Program to create a safer, more reliable, and efficient water supply system for the customers of the City of Sweetwater (City). The project included construction of approximately 2,600 linear feet (LF) of 6-inch C900 DR18 PVC water line, 4,300 LF of 10-inch C900 DR18 PVC water line, related fitting and valves and related work to reconnect existing water lines and meters to new water lines. Additionally, the project includes raw water pump station improvements and membrane replacement. Rehabilitation of the City's 820,000-gallon welded steel clearwell at the water treatment plant (WTP), including the recoating of the interior and exterior, was completed separately utilizing the American Rescue Plan Act funds.

Contact: Justin Clowers, Utilities Director, (325) 235-4166

Grand Avenue Lift Station Improvements City of Glen Rose

eHT was retained by the City of Glen Rose to provide professional services to design and manage the replacement of the existing Grand Avenue Lift Station in a new location adjacent to Barnard Street, across the Paluxy River. The project included the installation of gravity sewer and force main associated with the relocation of the lift station.

Contact: Jim Holder, Public Works Director, (254) 897-2272

CDBG Wastewater System Improvements City of Winters

eHT provided project management, application assistance, design, and construction administration for the installation of 1,751 linear feet of sanitary sewer mains, manholes, service reconnections and pavement and surface restoration for the City of Winters. The project utilized funds from the Texas Department of Agriculture (TDA) Community Development Block Grant (CDBG) Program.

Contact: Nate Smith, City Administrator, (325) 754-5635

Trunk Sanitary Sewer Main Replacement City of Huntsville



eHT provided project management, design, and construction administration for an upgrade of approximately 4.6 miles of trunk main that serves the AJ Brown Wastewater Treatment Plant (WWTP), owned and operated by the City of Huntsville. The project included the installation of approximately 1.1 miles of 48-inch PVC sewer line and 3.5 miles of 42-inch PVC sewer line. The project also included approximately 72 pre-cast concrete manholes and 15 branch connections.

Contact: Brent Sherrod, Public Works Director, (936) 294-5707

Water and Wastewater Improvements City of Eden

eHT provided project management, funding application assistance and design for construction of water and sewer infrastructure improvements consisting of the replacement of old dilapidated water distribution piping and sewer collection piping within existing systems for the City of Eden. The project included construction of a low-pressure sewer collection system in lower areas of the system, as well as a lift station on the east side of town. Some portions of the City's water and sewer systems had reached the end of their design life and were no longer capable of reliably serving the residents of the city. Faced with constant pipe repair costs and interrupted service to their customers, the city decided to replace the most problematic sections in the systems. The project also included new lines to loop the water system and increase water availability. The project included installation of a 250-kW emergency generator for the water treatment plant and a 200-kW emergency generator for Well No. 3. The project utilized funds through United States Department of Agriculture (USDA) Rural Development (RD) and Rural Utilities Service (RUS).

Contact: Priscilla Aguirre, City Manager, (325) 869-2211

East North 10th and Maple Street Paving and Drainage City of Abilene



eHT provided project management, design, survey, and construction management for roadway improvements for East North (EN) 10th Street, including approximately 8,080 linear feet of hot mix asphalt and reconstructing and widening approximately 6,260 linear feet of roadway. The project included a five-lane roadway, two lanes in each direction and one turning lane, and the addition of a sidewalk along the south side of EN 10th Street, as well as the incorporation of design that will allow for a future sidewalk to be constructed along the North side of the roadway. The project incorporated a new curb and gutter system.

Contact: Max Johnson, Director of Public Works,
(325) 676-6283

CDBG Paving and Drainage City of Seminole

eHT provided project management for roadway paving and drainage improvements along NE Avenue A, NE Avenue B and NE Avenue C between NE 5th Street and NE 8th Street for the City. The project consisted of 16,500 square yards of asphalt and base removal and replacement, 700 square yards of new concrete paving and 7,500 linear feet of new concrete lay-down curbing.

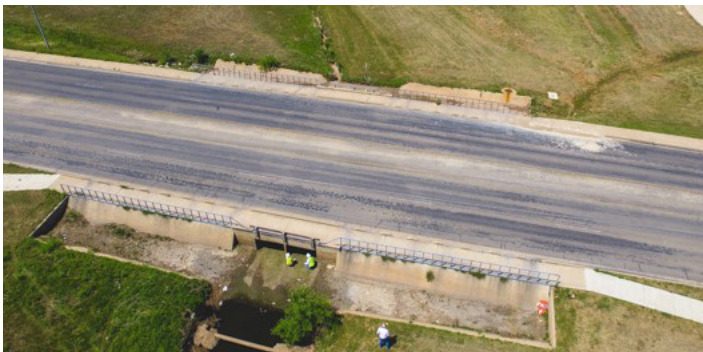
Contact: Jeff Rose, Public Works Director, (806) 319-2825

Street and Drainage Improvements City of Glen Rose

eHT provided project management, design, bidding support and construction administration for street and drainage improvements for the City. The project received funding through the Texas Department of Agriculture (TDA) Community Development Block Grant (CDBG) Program. The project included approximately 1,300 linear feet of 4th Street, Webster Street, and Clay Street, including removal of existing pavement and installation of new asphalt pavement with curb and gutter. Additionally, approximately 620 linear feet of storm drain was installed ranging from 2' x 4' concrete box culvert to 18-inch RCP, storm drain inlets, headwalls and construction of a detention pond.

Contact: Jim Holder, Public Works Director, (254) 897-2272

College Hills Boulevard Paving and Drainage City of San Angelo



eHT provided project management, design, and construction administration for the replacement of aging roadway surface with full depth base, as well as drainage improvements along College Hills Boulevard (CHB). The project included the rehabilitation of water and sewer utilities, roadway design, drainage evaluation and improvements, right-of-way verification, design survey, geotechnical investigation, and the development of plans and specifications.

Originally constructed in the 1970s, College Hills Boulevard crosses the Red Arroyo drainage basin which frequently experiences roadway closures due to floodwaters overtopping the roadway. eHT has determined that raising the roadway out of the 100-year floodplain would require upwards of 4 feet of vertical fill, significant re-grading of adjacent streets, and mitigation of multiple other flooding considerations. eHT is now assisting the City with development of solutions through a Master Drainage Plan and the City has applied for grant funding through the FHA BUILD program to fund drainage improvements.

Drainage analysis completed by eHT as part of the project showed that the primary cause of flooding of CHB was the low and flat roadway profile across the Red Arroyo floodplain. The existing drainage structures under CHB were undersized and contributed little to preventing the roadway from overtopping during frequent rainfall events. Cost analysis performed by eHT showed that raising the profile of CHB across the Red Arroyo out of the floodplain exceeds the budget due to the vertical fill required to raise the roadway and the impacts on intersecting streets, commercial driveways and existing adjacent structures. Implementation of an underground drainage system along CHB was evaluated but large flows and high-water levels within the Red Arroyo limited the effectiveness of the system without some form of upstream improvement. To meet the City's budgeted timeline while drainage solutions are developed and evaluated, eHT prepared a utility replacement package to bid prior to roadway improvements.

Contact: Shane Kelton, Executive Director of Public Works, (325) 657-4206

TDA CDBG Water and Paving Improvements City of Big Lake

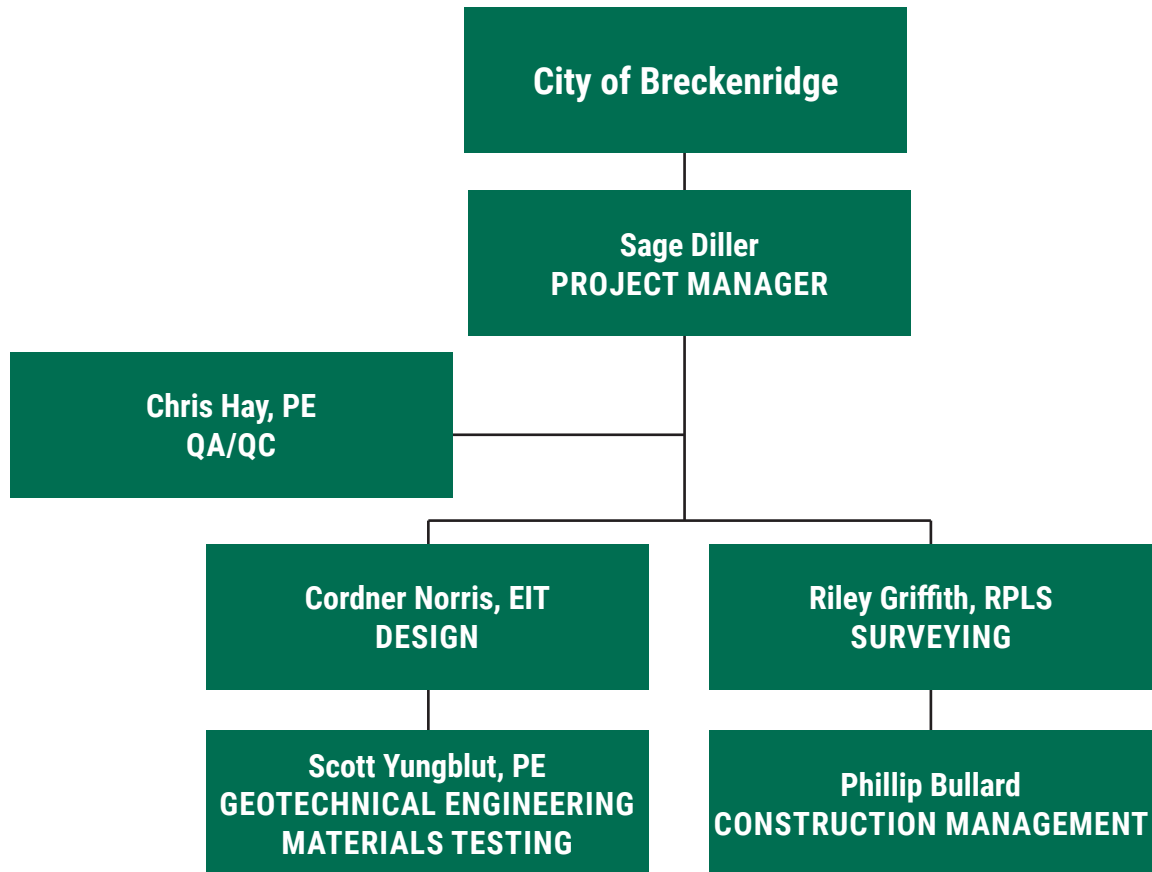
eHT provided project management, design, and construction administration for water line replacement with full-depth pavement replacement along Montana Avenue. The existing water line was replaced, and the full width of the existing asphalt pavement was replaced due to its deteriorated condition. The project consisted of 3,250 square yards of asphalt removal and replacement.

Contact: Sheri Benson, City Administrator, (325) 884-2511

CAPACITY TO PERFORM

Organizational Structure

Key Personnel are listed herein. Additional personnel are available as needed.



Team Experience

Our Project Manager and Team Members have a strong understanding of the design, construction, regulatory and funding issues related to TDA funded projects.

We have listed key Team Members who will assist in accomplishing the objectives of various projects. Additional support personnel are available for the Project as needed.

Our resources include additional engineering professionals, survey crew members and Registered Professional Land Surveyors, geologists/geoscientists, field technicians and drafting personnel.

Resumes for the above personnel follow.

Sage Diller, PE Project Manager

PROFESSIONAL EXPERIENCE

Mr. Diller has over 19 years of experience in project design, management and construction oversight on a wide range of projects for municipal, state and private entities. His past projects have included municipal water and sewer systems, groundwater wells and storage facilities, state and county roadways and private developments. In addition to design and construction management, Mr. Diller has extensive experience assisting clients in applying for grant/loan funding through various funding agency programs, including Texas Water Development Board DWSRF and CWSRF, USDA Rural Development, Texas Department of Agriculture CDBG and DTR and TxDOT Utility Relocation and TAP Programs.

Mr. Diller has assisted clients with drought related planning projects that have included water conservation, water supply options and improved water system efficiency options. Each project has included close client interaction, reports outlining possible alternatives, funding agency assistance and regulatory agency interaction.

PROJECT EXPERIENCE

- **DWSRF Water System Improvements, City of Breckenridge:** Project Manager for water system improvements including approximately 17,000 linear feet of water lines in various locations throughout the City, replacement of asphalt and water service reconnects. The project also included improvements to the water treatment plant including upgrades to the existing clearwell, chemical bulk storage system, a chemical transfer building and a concrete lined backwash waste basin. It also included improvements to the raw water intake structure including the replacement of wheel-operated intake gates and valves, replacement of stairway access and concrete repairs.
- **Drought Management Strategies, City of Breckenridge:** Project Manager for the identification and evaluation of available water supply management strategies, report development and submittal of funding application to address proposed improvements.
- **Water Distribution System Improvements, City of Breckenridge:** Project Manager for the design and bid administration for over 5 miles of new water distribution mains and valve replacement.
- **CWSRF Wastewater Improvements, City of Breckenridge:** Project Manager for an I&I study; rehabilitation and replacement of lift stations; replacement of collection lines; and, design improvements for the wastewater treatment plant. The improvements consisted of a new clarifier, converting the existing small clarifier to a sludge holding tank, and additional rehabilitation.
- **Park Street Paving and Drainage Improvements, City of Breckenridge:** Project Manager for construction of approximately 1,000 tons of hot mix asphalt paving, 23,400 square yards of concrete paving, 32,900 square yards of flexible base material, 11,500 linear feet of 4-inch to 12-inch water line, 7,400 linear feet of 6-inch to 10-inch sewer line, 1,400 linear feet of 18-inch to 36-inch storm drain, including curb, gutter and sidewalks.



EDUCATION

Bachelor of Science, Civil Engineering
Texas Tech University, 2001

REGISTRATIONS

Registered Professional Engineer –
Texas #96645, 2005

PROFESSIONAL/CIVIC ORGANIZATIONS

Texas Society of Professional
Engineers

United Way of Abilene, Executive
Board and Finance Committee Chair

Texas Tech Alumni Abilene Chapter,
President, 2015

CERTIFICATIONS/EDUCATION

eHT Leadership Development
Program, 2013

Construction Specifications Institute
Priority Management, Dale Carnegie
HEC-RAS, Floodplain Management
Highway Capacity, Geopak I & II

PROFESSIONAL ENDEAVORS

Enprotec / Hibbs & Todd, Inc.
Vice President
Abilene, Texas
2007 - present

Texas Department of Transportation
(TxDOT), Lubbock District
Project Engineer
Lubbock, Texas
2001 - 2007

Chris S. Hay, PE QA/QC

PROFESSIONAL EXPERIENCE

Mr. Hay has 17 years of experience with a particular focus on civil and municipal projects. His experience includes planning, design and project management in the areas of water distribution and transmission, wastewater collection and conveyance, roadway and drainage improvements and various park and recreational improvements including multi-purpose trails. He has worked with various funding agencies on different projects including the Texas Water Development Board (TWDB), Texas Department of Agriculture (TDA), Texas Parks and Wildlife Department (TPWD) and United States Department of Agriculture (USDA).

PROJECT EXPERIENCE

- **Engineer of Record, City of Glen Rose:** Mr. Hay provides consulting services to the City of Glen Rose for a variety of projects as the City's Engineer of Record. Mr. Hay has provided professional services for development review, capital improvements planning, drainage studies, lift stations, utility easements, sanitary sewer and water line installation, GIS mapping, utility location surveying, water conservation planning and street reconstruction. He works closely with City staff to ensure on-going projects coincide with planned future improvements and that projects are developed in accordance with established City standards.
- **DWSRF Water System Improvements, City of Granbury:** Mr. Hay provided application support, project management, design and construction phase services for this water system improvement project funded through the Texas Water Development Board's (TWDB) Drinking Water State Revolving Fund (DWSRF) Program to implement improvements that account for the new 2.5 MGD water treatment plant (WTP), as well as the future WTP expansion. Project elements included: Scout Camp Pump Station and distribution improvements consisting of a new pump station, a PRV relocation and 21,400 linear feet (LF) of 16-inch water line; Hospital and bridge crossing distribution system improvements consisting of 10,400 LF of 20-inch water line; Lakewood Hills distribution system improvements consisting of 850 LF of 8-inch water line, a PRV and valve opening and closing; North Elevated Tank distribution system improvements consisting of 50 LF of 12-inch water line and valve improvements; and, water treatment plant (WTP) distribution system improvements consisting of 350 LF of 20-inch water line to replace an existing 8-inch water line in the area.
- **Phase I Distribution Improvements, Parker County Special Utility District:** Mr. Hay served as project manager for distribution improvements including a new 500,000-gallon elevated storage tank; new central transmission line (25,600 linear feet (LF) of 16-inch water line); new north transmission line (6,700 LF of 12-inch water line); new south transmission line (1,300 LF of 12-inch water line for river crossing); Brock Pump Station improvements; piping improvements at Sugartree Pump Station and Jack Wright Pump Station; and, new pressure reducing valve for the southern service area.



EDUCATION

Bachelor of Science, Civil Engineering, Texas A&M University, 2007

REGISTRATIONS

Registered Professional Engineer – Texas #111453, 2012

PROFESSIONAL/CIVIC ORGANIZATIONS

American Waterworks Association, Texas Branch

CERTIFICATIONS/EDUCATION

InfoSWMM Sewer System Modeling
H2Omap Water Distribution Modeling
H2OSurge Transient Modeling
InfoWater Water Distribution Modeling
Innovyze Advanced Water Training
Site Engineering and Land Development Software

PROFESSIONAL ENDEAVORS

Enprotec / Hibbs & Todd, Inc.
Vice President
Granbury, Texas
2013 - present

Johnson and Pace, Inc.
Project Manager
Tyler, Texas
2012 - 2013

Adams Engineering
Land Development
Tyler, Texas
2007 - 2012

Corder Norris, EIT Design

PROFESSIONAL EXPERIENCE

Mr. Norris has worked on a variety of civil and municipal projects in Texas. His experience includes paving and drainage, pond design, site development, client coordination and cost estimation. Additionally, he is experienced with utility design, including water distribution, wastewater and site utilities. He has provided environmental support including assisting with development of stormwater pollution prevention plans and site inspections to identify possible contaminants on construction sites.

PROJECT EXPERIENCE

- US 180-FM 3099 Utility Relocation, City of Breckenridge
- Downtown Paving Project, City of Eden
- E.N. 10th Street Roadway Rehabilitation and Reconstruction, City of Abilene
- Athletic Facilities, Parking and Paving Improvements, Caldwell ISD
- Industrial Park Paving Renovations, City of Eden
- Annexed Properties Utility Improvements, City of Seminole
- Stormwater Pollution Prevention Plan- Sierra Sunset Apartment Additions
- Public Works Building, City of Clyde
- Carter Asset Management Office Building, Parkhill
- US 190 Waterline Relocation, TxDOT/Lometa
- E.N. 10th Street Utility Relocation, City of Abilene
- South 14th Street Pedestrian Improvements, City of Abilene
- Shotwell Stadium Pressbox, Abilene ISD
- Paving and Drainage Improvements, Hanner Chevrolet
- Track and Field Improvements, Alice ISD



EDUCATION

Bachelor of Science, Civil Engineering, Angelo State University, 2021

REGISTRATIONS

Engineer in Training

PROFESSIONAL/CIVIC ORGANIZATIONS

American Society of Civil Engineers
Angelo State Ramgeiners

PROFESSIONAL ENDEAVORS

Enprotec / Hibbs & Todd, Inc.
Staff Engineer
Abilene, Texas
2022 - present

Harding Earthworks
Project Engineer Intern
San Angelo, Texas
2020 - 2022

Scott Yungblut, PE

Geotechnical Engineering and Materials Testing

PROFESSIONAL EXPERIENCE

Mr. Yungblut has 27 years of experience in performing engineering analysis and design on geotechnical and construction materials testing projects throughout Texas, Louisiana, Arkansas and Oklahoma. He supervises and manages eHT's soil and materials testing laboratory responsibilities including proposal preparation, field investigation, field and laboratory analysis, report preparation and construction quality assurance and quality control.

The eHT laboratory staff utilizes state-of-the-art equipment and instrumentation. eHT procedures and methodologies conform to federal and/or state standards such as American Standards and Testing Methods (ASTM), TxDOT and American Concrete Institute (ACI).

PROJECT EXPERIENCE

Geotechnical Expertise

Mr. Yungblut's geotechnical expertise includes:

- Subsurface Exploration
- Soil Property Evaluations
- Shallow and Deep Foundation Design Recommendations
- Foundations on Expansive Soils
- Pavement Design and Evaluation
- Roadway and Parking Lot Upgrades
- Airfield Pavements

Notable Civil Projects

- Abilene ISD: Various new schools and athletic facilities
- City of Midland Monopole Tower Sites
- Lamesa High School Improvements
- Hampton Inn & Suites, Lubbock
- Abilene Fire Training Academy
- Burger King/Popeyes, Midland
- Chisolm Truck Stop, Lubbock
- Hendrick Home for Children, Main Building, Abilene
- Avis Lube 126, Midland



EDUCATION

Bachelor of Science, Civil Engineering
University of Texas at Arlington, 1993

REGISTRATIONS

Registered Professional Engineer –
Texas #85640, 1999

CERTIFICATIONS/EDUCATION

Concrete Evaluation and Repair I & II,
2011

Retaining Wall Design, 2010

Shrink Swell Soils, Texas A&M

Forensics Engineering Conference,
2007

Texas Accessibility Academy, 2005

TxDOT HotMix (HMACP) Inspector,
2003

ParSales Training, 1996

Dale Carnegie Leadership Course,
1995

PROFESSIONAL ENDEAVORS

Enprotec / Hibbs & Todd, Inc.
Vice President
Abilene, Texas
2000 - present

Giles Engineering Associates
Project Engineer
Dallas, Texas
1997 - 2000

Professional Service Industries, Inc.
Project Manager, Department
Manager, Technician, Geotechnical
Services
Dallas, Texas
1994 - 1997

Phillip Bullard

Construction Management

PROFESSIONAL EXPERIENCE

Mr. Bullard has over 30 years of experience in construction management and inspection. He is hard-working, conscientious, and responsible with effective problem solving and analytical skills. He is skilled in planning and execution of projects during time critical environments. He has extensive knowledge in directing, coordinating and exercising authority for planning, organization, control and completion of projects as well as managing employee talents. He has conducted critical inspections on projects and provided solutions for related issues. He is skilled at solving customer relations issues by seeking first to understand and then to be understood. He is effectively able to communicate with customers, contractors and management to meet customer needs while still maintaining compliance with applicable codes. He can approach projects with a contractor's understanding of how to complete a project as well as an understanding of the engineering concepts of the project.

Mr. Bullard serves as a Resident Project Representative for eHT. In this capacity, he inspects materials for uniformity to the approved submittal and the incorporation of materials and labor into projects. Mr. Bullard witnesses all testing, such as: hydrostatic water line and bacteria tests, air test sanitary sewer tests, vacuum manhole tests, tapping sleeve air tests, soil/base densities and asphalt core samples for testing. He coordinates information between contractors, owners, engineers and utility owners. He also records installation locations and quantities for as builts and pay applications.

PROJECT EXPERIENCE

- **TxDOT Water Utility Relocation, City of Breckenridge:** Continued installation of new water mains, water services, water meters, gate valves, fire hydrants, asphalt repair and traffic control. Installation of new water mains, water services, water meters, gate valves, fire hydrants, asphalt repair and traffic control.
- **CDBG Water Line Replacement, City of Breckenridge:** Installation of new water mains, water services, gate valves, fire hydrants and asphalt repair, as well as resurfacing one block of asphalt overlay.
- **TxDOT Sanitary Sewer Utility Relocation, City of Breckenridge:** Installation of new sanitary sewer main line, sewer services, manholes, asphalt repair and traffic control.
- **Prison Elevated Storage Tank Rehab, City of Breckenridge:** Sand blast and three coats of epoxy paint in the interior of elevated storage tank.
- **Parks Street Paving and Drainage, City of Breckenridge:** Installation of new water mains, water services, gate valves, and fire hydrants. New sanitary sewer mains, sewer services, cleanouts and manholes. New storm drain, 10 inlet boxes and three outlet boxes. Installation of 21 blocks of new reinforced concrete streets with sidewalks on both sides of streets, with ADA handicap ramps throughout the project.



EDUCATION

Bachelor of Science, Civil Engineering, Texas Tech University, 1993

Associate of Science, Pre-Engineering, South Plains College, 1990

CERTIFICATIONS/EDUCATION

Hot Mix Asphalt Level 1B, 2014

Nuclear Density Gauge Certification, 2014

Water Distribution Operator Class C, 2013, WD0011340

Class A Commercial Drivers License, 2011

Wastewater Collection Operator 1, 2011, WW0044811

Water Utilities Safety Certification, 2011

Cross Connection Control & Pumps Certification, 2009

Confined Space Entry Certification, 2008

PROFESSIONAL ENDEAVORS

Enprotec / Hibbs & Todd, Inc.
Construction Inspector
Abilene, Texas
2017 - present

PSI Groundworks, Inc.
Contractor/Owner
Lubbock, Texas
2015 - 2017

City of Lubbock
Senior Construction Inspector
Lubbock, Texas
2011 - 2015

Riley Griffith, RPLS

Surveying

PROFESSIONAL EXPERIENCE

Mr. Griffith is the Survey Department Manager of Enprotec / Hibbs & Todd, Inc., and has 20 years experience in the field of land surveying. He has worked on residential and commercial land development projects; ALTA surveys; wind farms; oil and gas pipelines; oil field projects; water and sewer projects; a flood control dam; TxDOT ROW projects; Patent Surveys for the GLO; residential, commercial, and farm and ranch surveys. He has experience with pipeline route surveys, construction staking and ALTA surveys across West Texas, including boundary and topographic surveys; elevation certificates; ground bed surveys in Texas and Oklahoma; subdivision platting; and, oil well location staking.

PROJECT EXPERIENCE

- Airport Lift Station Improvements, City of Midland
- Water Distribution System, City of Midland
- Wadley Elevated Storage Tank Improvements, City of Midland
- Northeast Water System Improvements, City of Midland
- Wadley Boosting Station, City of Midland
- Central Business District Street Repair, City of Abilene
- Convention Center Renovations, City of Abilene
- Fire Training Facility, City of Abilene
- Memorial Hospital District, City of Ballinger
- Hendrick South Medical Buildings
- Dyess Air Force Base Hospital Facilities, SES Construction and Fuel Services, LLC
- Stonewall County Nursing Facility
- Rehabilitation of Hospital of Abilene, Med Properties
- Fire Station #7, City of Abilene
- Abilene Law Enforcement Center, City of Abilene
- Tuscany Ridge Development
- ACU Irrigation Pump Station
- Hampton Hills Development
- Water System Improvements, City of Stamford
- Wylie ISD New Elementary School
- College Hills Boulevard Rehabilitation Project, City of San Angelo
- Hardin-Simmons University Moody Center and Behrens Auditorium
- Highway 18/36 Development, Development Corporation of Abilene



EDUCATION

Bachelor of Science, Horticulture
Texas A&M University, 1993

REGISTRATIONS

Registered Professional Land
Surveyor – Texas #4683, 2006; OK
#1662

PROFESSIONAL ENDEAVORS

Enprotec / Hibbs & Todd, Inc.
Survey Department Manager
Abilene, Texas
2017 - present

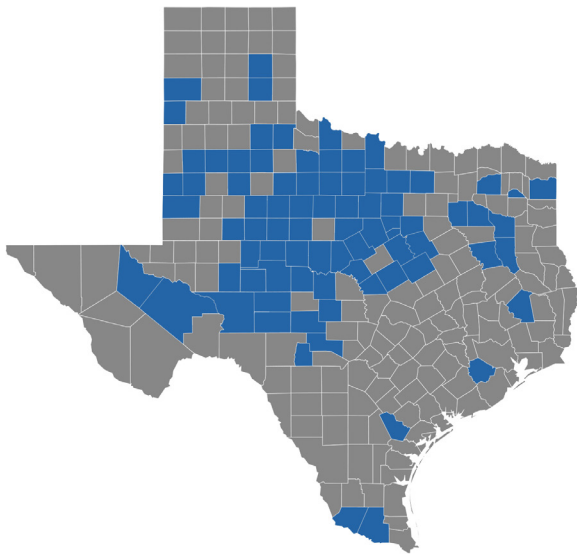
RG Surveying, Inc.
Owner
2015 - 2017

West Company of Abilene Land
Surveying
Managing RPLS
2006 - 2015

WORK PERFORMANCE

Regional Funded Projects

We have provided engineering services for a large part of Texas for TDA-funded projects. Our experience includes many successfully completed municipal infrastructure projects. The insight gained through this experience coupled with our level of service will allow us to provide a design that will meet the needs of the residents in the area. Our design will be cost effective, efficient and practical. The map below highlights areas of the State where we have provided engineering services for state or federally funded projects.



Ability to Meet Schedules



Based on current staffing, existing projects and known awards, sufficient staff will be available during the time period of this contract. In the event of workload peaks or the need for specialized disciplines, eHT has access to additional employees to meet project requirements. eHT will commit the appropriate staff resources to meet necessary schedules. eHT assures that this project will be a priority and we will have the qualified staff necessary to ensure its success.



Community Service Projects

We have provided engineering services for a large part of Texas for TDA-funded projects. eHT regularly assists our clients with community service programs such as Supplemental Environmental Projects (SEPs) which reduce the amount of pollution reaching the environment and enhance the quality of the environment in the community. Additionally, we regularly assist our clients with community outreach and public information pertaining to projects that impact residents, as well as community impact programs such as citywide cleanup projects.

Federally Funded Construction Projects



The ability to identify and provide a funding source for public improvements is both critical and necessary in today's tight financial markets. Municipalities and counties need a consultant that not only knows how to get the funding but has an in-depth understanding of the program and agency as well. For over 35 years, eHT has been successful in helping our clients apply for and receive funding for critical public works projects.

We have experience with the following programs:

- Texas Water Development Board (TWDB)
- Texas Department of Rural Affairs (TDRA)
- USDA Rural Development (RD)
- Economic Development Administration (EDA)
- North American Development Bank (NADBank)
- South Texas Development Council (STDC)
- Texas Department of Transportation (TxDOT)
- Texas Parks and Wildlife Department (TPWD)

Cost Control



Cost control is achieved by:

- 1) close coordination with the client for input and to ensure the client's needs are being accurately addressed;
- 2) project cost estimates produced by experienced professionals; and,
- 3) attention to detail in preparation of construction drawings.

Our "commitment" to cost control is best illustrated with our water / wastewater treatment projects.

Our “commitment” to cost control is best illustrated with our water / wastewater treatment projects.

New Treatment Plants. Typically, new treatment plants are constructed on vacant sites with little or no “unknowns”. Our projects under construction are 2% below project cost estimates, with a combined Change Order amount of less than 0.2% of the construction contract amounts.

Plant Renovations and Expansions. These type projects have a greater degree of unknowns than “new” projects. These “unknowns” impact not only cost estimates developed for the project, but Change Orders during construction. Our emphasis on developing accurate cost estimates during the planning phase resulted in construction contracts approximately 1.5% less than presented in the estimates.



Labor Resources

eHT can be supplemented and supported by other professionals within the company to handle peaks and illness. We do not anticipate substantial attrition. We have a very stable and cohesive group of employees. In the event that the Principal-in-Charge or Project Manager are not available during the performance period, their responsibilities will be assumed by other officers of eHT.

eHT is prepared to increase staff as necessary to complete projects to the satisfaction and expectations of the client. This is a high priority project for our company and we will not accept additional projects that could adversely affect our ability to meet the demands of this project.



Quality of Work

eHT has managed more TDA-funded projects than most engineering firms in the state. As such, we have a vast array of experience designing and managing all types of water, wastewater and infrastructure improvement projects.

Project Approach

Agency Involvement. Our engineers will work closely with client representatives during the entire project. Clear communication and close coordination during the project will be critical for its success. There are several methods for establishing strong communication including using established communications procedures, specific TxCDBG protocol and a Strategic Decision Group.

Strategic Decision Group. eHT has informally implemented a Strategic Decision Group on each of our TDA-funded projects. The Client, Grant Consultant and Engineer have worked together to keep the projects free of “snags” and on target. Construction firm principals will be added at the appropriate time. This decision-making group will anticipate “snags” and inefficiencies in the project and resolve any major problems that may arise. This will help avoid long periods of downtime that often result because of lengthy negotiations and ineffective decision-making. This group’s purpose is to keep the project on target.

Stakeholder Input. We advocate incorporating local input from the Client on important project decisions and options. Our experience indicates this level of communication and helps to provide a project that will meet the local needs. We feel Client leadership helps to shape the outcome of the project.

We accomplish this by:

- Providing frequent technical briefings regarding the details of the project.
- Providing field tours for Client representatives to view proposed equipment and processes.
- Ensuring critical project decisions are made by the Client and implemented by the design team.

As your consulting partner, the first step will be to meet with your staff and review the objectives for your project. A preliminary engineering report (PER) will be prepared to evaluate existing conditions, alternatives and associated costs.

The Client’s needs and desires must be integrated into the project from the start. Input concerning functional issues during design and construction phases will result in a more “user-friendly” system. Our staff will maintain constant communication, focusing on sensitive issues and potential roadblocks to success.

Task 1.0: Preliminary Engineering Report

- Consult with the Client to determine specific needs and requirements.
- Prepare a preliminary engineering study and report on the project in sufficient detail to indicate problems involved and the alternate solutions available to the Client, to include schematic layouts and sketches, general cost projection for the Project and a schedule to set forth the Engineer’s recommendations.
- Determine whether or not the project requires acquisition of property. Make any necessary surveys of existing right-of-way, topography, utilities, or other field data required for proper design of the project.

Provide consultation and advise as to the necessity of the Client providing or obtaining other services such as auger borings, core borings, soil tests, or other subsurface explorations; laboratory testing and inspecting of samples or materials; other special consultations; and act as the Client's representative in connection with any such services.

D. Determine whether or not the project requires acquisition of property and if applicable furnish to the locality: Legal Description of Parcels to be acquired; Map showing entire tract with designation of part to be acquired.

Task 2.0: Design Plans and Specifications

A. On the basis of the approved preliminary design documents and preliminary engineering findings, we prepare detailed construction drawings and specifications for the Project.

B. Furnish engineering data that will assist in the preparation of the required documents to secure approval of such governmental authorities as have jurisdiction over design criteria applicable to the Project for the Client. Special considerations include obtaining approval of plans and specifications by the Texas Commission on Environmental Quality (TCEQ), Austin, Texas.

C. Advise the Client of any adjustment to the cost projection for the Project caused by changes in scope, design requirements, or construction costs and furnish a revised cost projection for the Project based on the completed drawings and specifications.

Task 3.0: Bid Administration

A. Prepare Bid Packet/Contract Documents.

B. Place advertisement/solicitation (advertised in newspaper of general circulation for two consecutive weeks at minimum).

C. Issue addenda for any necessary clarification of bid documents including incorporation of any wage rate modifications (if applicable).

D. Open bids (bid opening to be held at least two weeks from publication date of first advertisement).

E. Tabulate bids (include completeness and eligibility screening).

F. Announce lowest and best bid, if applicable (at bid opening). If required, issue a rejection of all bids and re-advertise bids.

G. Conduct construction Contractor eligibility verification.

H. Approve contract award by local governing body.

Task 4.0: Construction Phase - Field Testing and Inspection

A. Direct and hold a pre-construction conference with Client representatives, Contractor and Engineer.

B. Issue Notice to Proceed to construction to Contractor.

C. Establish Progress Payment Schedule and construction for Contractor's submittal of cost estimates.

D. Process and submit Change Orders.

E. Perform site visits and observations (by Project Engineer).

F. Check samples, catalog data, shop drawings, laboratory and mill tests of materials and equipment and other data which the Contractor is required to submit, only for the conformance with the design concept of the Project and compliance with the information given by the plans, specifications and contract documents.

G. Based on the Consultant's on-site observations as an experienced and qualified design professional and on the Consultant's review of the Contractor's Applications for Payment, determine the amount owed to the Contractor in such amounts.

H. Prepare Certificate of Construction Completion.

I. Prepare resolution for consideration by the locality for acceptance of the completed Project.

Task 5.0: Closeout Phase

A. Conduct, in company with Client representative(s), a final inspection of the Project for conformance with the design concept of the Project, and compliance with the plans, specifications, and contract documents, and recommend in writing, final payment to the Contractor.

B. Make an inspection of the Project prior to expiration of the warranty period and report observed discrepancies under warranty provided by the construction contract.

C. Furnish the Client a set of record prints of drawings and addendum drawings showing those changes made during the construction period, based upon the marked up prints, drawing and other data furnished by the Contractor which the Consultant considers to be significant.

Deliverables

eHT will provide plans, specifications and executed documents as determined by the Client, but typically include: Two sets of final plans and specifications during the bid process; Three sets of executed contract documents; and, One set of drawings of record.

eHT follows the standard project implementation schedule for TDA-funded projects including specific milestone dates set forth by the funding agency.

INSURANCE

The firm maintains insurance coverage in amounts appropriate to its workload and low claims history. Included in our current policies are coverages for commercial general liability, professional liability, automobile liability, as well as workers compensation.



CERTIFICATE OF LIABILITY INSURANCE

DATE (MM/DD/YYYY)
3/26/2024

THIS CERTIFICATE IS ISSUED AS A MATTER OF INFORMATION ONLY AND CONFERS NO RIGHTS UPON THE CERTIFICATE HOLDER. THIS CERTIFICATE DOES NOT AFFIRMATIVELY OR NEGATIVELY AMEND, EXTEND OR ALTER THE COVERAGE AFFORDED BY THE POLICIES BELOW. THIS CERTIFICATE OF INSURANCE DOES NOT CONSTITUTE A CONTRACT BETWEEN THE ISSUING INSURER(S), AUTHORIZED REPRESENTATIVE OR PRODUCER, AND THE CERTIFICATE HOLDER.

IMPORTANT: If the certificate holder is an ADDITIONAL INSURED, the policy(ies) must have ADDITIONAL INSURED provisions or be endorsed. If SUBROGATION IS WAIVED, subject to the terms and conditions of the policy, certain policies may require an endorsement. A statement on this certificate does not confer rights to the certificate holder in lieu of such endorsement(s).

PRODUCER Marsh & McLennan Agency, LLC 8144 Walnut Hill Lane, 16th Fl Dallas TX 75231		CONTACT NAME: Jacquie Moline PHONE (A/C, No, Ext): 972-770-1454 FAX (A/C, No): 212-701-1134 E-MAIL ADDRESS: jacquie.moline@marshmma.com	
INSURED Enprotec/Hibbs & Todd, Inc. 402 Cedar St. Abilene TX 79601		INSURER(S) AFFORDING COVERAGE	
		INSURER A: Texas Mutual Insurance Company NAIC # 22945 INSURER B: Continental Casualty Company 20443 INSURER C: Continental Casualty Company 20443 INSURER D: Continental Insurance Company 35289 INSURER E: INSURER F:	

COVERAGES **CERTIFICATE NUMBER:** 1806738231 **REVISION NUMBER:**

THIS IS TO CERTIFY THAT THE POLICIES OF INSURANCE LISTED BELOW HAVE BEEN ISSUED TO THE INSURED NAMED ABOVE FOR THE POLICY PERIOD INDICATED. NOTWITHSTANDING ANY REQUIREMENT, TERM OR CONDITION OF ANY CONTRACT OR OTHER DOCUMENT WITH RESPECT TO WHICH THIS CERTIFICATE MAY BE ISSUED OR MAY PERTAIN, THE INSURANCE AFFORDED BY THE POLICIES DESCRIBED HEREIN IS SUBJECT TO ALL THE TERMS, EXCLUSIONS AND CONDITIONS OF SUCH POLICIES. LIMITS SHOWN MAY HAVE BEEN REDUCED BY PAID CLAIMS.

INSR LTR	TYPE OF INSURANCE	ADDL INSD	SUBR WVD	POLICY NUMBER	POLICY EFF (MM/DD/YYYY)	POLICY EXP (MM/DD/YYYY)	LIMITS
C	<input checked="" type="checkbox"/> COMMERCIAL GENERAL LIABILITY <input type="checkbox"/> CLAIMS-MADE <input checked="" type="checkbox"/> OCCUR GEN'L AGGREGATE LIMIT APPLIES PER: <input type="checkbox"/> POLICY <input checked="" type="checkbox"/> PROJECT <input type="checkbox"/> LOC OTHER:			6076387644	4/2/2024	4/2/2025	EACH OCCURRENCE \$ 1,000,000 DAMAGE TO RENTED PREMISES (Ea occurrence) \$ 1,000,000 MED EXP (Any one person) \$ 15,000 PERSONAL & ADV INJURY \$ 1,000,000 GENERAL AGGREGATE \$ 2,000,000 PRODUCTS - COMP/OP AGG \$ 2,000,000 \$
D	<input checked="" type="checkbox"/> AUTOMOBILE LIABILITY <input type="checkbox"/> ANY AUTO <input type="checkbox"/> OWNED AUTOS ONLY <input type="checkbox"/> SCHEDULED AUTOS NON-OWNED AUTOS ONLY <input type="checkbox"/> HIRED AUTOS ONLY			6076387613	4/2/2024	4/2/2025	COMBINED SINGLE LIMIT (Ea accident) \$ 1,000,000 BODILY INJURY (Per person) \$ BODILY INJURY (Per accident) \$ PROPERTY DAMAGE (Per accident) \$ \$
D	<input checked="" type="checkbox"/> UMBRELLA LIAB <input checked="" type="checkbox"/> OCCUR <input type="checkbox"/> EXCESS LIAB <input type="checkbox"/> CLAIMS-MADE DED <input checked="" type="checkbox"/> RETENTION \$ 10,000			6076387630	4/2/2024	4/2/2025	EACH OCCURRENCE \$ 10,000,000 AGGREGATE \$ 10,000,000 \$
A	WORKERS COMPENSATION AND EMPLOYERS' LIABILITY ANY PROPRIETOR/PARTNER/EXECUTIVE OFFICER/MEMBER EXCLUDED? (Mandatory in NH) If yes, describe under DESCRIPTION OF OPERATIONS below	Y/N	N/A	0001141768	4/2/2024	4/2/2025	<input checked="" type="checkbox"/> PER STATUTE <input type="checkbox"/> OTH-ER E.L. EACH ACCIDENT \$ 1,000,000 E.L. DISEASE - EA EMPLOYEE \$ 1,000,000 E.L. DISEASE - POLICY LIMIT \$ 1,000,000
B	Professional & Pollution Liability			AEH591899237	4/2/2024	4/2/2025	Each Claim \$5,000,000 Aggregate \$5,000,000 SIR - Per Claim \$100,000

DESCRIPTION OF OPERATIONS / LOCATIONS / VEHICLES (ACORD 101, Additional Remarks Schedule, may be attached if more space is required)
 Cyber Liability, Policy Number: ESM0239914640, Carrier: Underwritten by certain underwriters at Lloyd's and other insurers (4/2/24-4/2/25)
 \$1,000,000 Limit of Liability - each claim
 \$1,000,000 Limit of Liability - aggregate
 \$5,000 - Retention - each claim

Additional Insured form #CNA74858 edition 01/15 applies to the General Liability policy.
 Waiver of subrogation form #CNA74858 edition 01/15 applies to the General Liability policy.
 Primary & Non-Contributory General Liability form #CNA74858 edition 01/15.
 See Attached...

CERTIFICATE HOLDER For Information Only	CANCELLATION SHOULD ANY OF THE ABOVE DESCRIBED POLICIES BE CANCELLED BEFORE THE EXPIRATION DATE THEREOF, NOTICE WILL BE DELIVERED IN ACCORDANCE WITH THE POLICY PROVISIONS. AUTHORIZED REPRESENTATIVE
---	--

© 1988-2015 ACORD CORPORATION. All rights reserved.

ACORD 25 (2016/03)

The ACORD name and logo are registered marks of ACORD

AFFIRMATIVE ACTION

It is the policy of Enprotec / Hibbs & Todd, Inc. to afford equal opportunity of employment to all individuals regardless of race, color, religion, sex, or national origin. The Company will take affirmative action to ensure that it will:

- 1) Recruit, hire and promote all job classifications without regard to race, color, religion, sex, or national origin.
- 2) Base decisions on employment so as to further the principle of equal employment opportunity.
- 3) Ensure that promotion decisions are in accord with principles of equal employment opportunities.

The successful achievement of nondiscriminatory employment programs requires maximum cooperation between management and employees. In fulfilling its part in this cooperative effort, management is obliged to lead the way by establishing and implementing affirmative procedures and practices which will insure objectives, namely, equitable employment opportunity for all.

I certify that the officers of this company will direct the establishment of and monitor the implementation of personnel procedures to guide our affirmative action program.



Scott F. Hibbs, PE
Chief Executive Officer



SYSTEM FOR AWARD MANAGEMENT

Last updated by Jessica Long on Aug 26, 2024 at 02:08 PM

ENPROTEC / HIBBS & TODD, INC.



ENPROTEC / HIBBS & TODD, INC.

Unique Entity ID DLNUVLRUVW17	CAGE / NCAGE 0HLV8	Purpose of Registration All Awards
Registration Status Active Registration	Expiration Date Aug 26, 2025	
Physical Address 402 Cedar ST Abilene, Texas 79601-5734 United States	Mailing Address P.O. Box 3097 Abilene, Texas 79604-3097 United States	

Business Information

Doing Business as (blank)	Division Name (blank)	Division Number (blank)
Congressional District Texas 19	State / Country of Incorporation Texas / United States	URL http://www.e-ht.com

Registration Dates

Activation Date Aug 29, 2024	Submission Date Aug 26, 2024	Initial Registration Date Apr 12, 2002
--	--	--

Entity Dates

Entity Start Date Jan 1, 1989	Fiscal Year End Close Date Dec 31
---	---

Immediate Owner

CAGE (blank)	Legal Business Name (blank)
------------------------	---------------------------------------

Highest Level Owner

CAGE (blank)	Legal Business Name (blank)
------------------------	---------------------------------------

Executive Compensation

In your business or organization's preceding completed fiscal year, did your business or organization (the legal entity to which this specific SAM record, represented by a Unique Entity ID, belongs) receive both of the following: 1. 80 percent or more of your annual gross revenues in U.S. federal contracts, subcontracts, loans, grants, subgrants, and/or cooperative agreements and 2. \$25,000,000 or more in annual gross revenues from U.S. federal contracts, subcontracts, loans, grants, subgrants, and/or cooperative agreements?

No

Does the public have access to information about the compensation of the senior executives in your business or organization (the legal entity to which this specific SAM record, represented by a Unique Entity ID, belongs) through periodic reports filed under section 13(a) or 15(d) of the Securities Exchange Act of 1934 (15 U.S.C. 78m(a), 78o(d)) or section 6104 of the Internal Revenue Code of 1986?

Not Selected

Proceedings Questions

Is your business or organization, as represented by the Unique Entity ID on this entity registration, responding to a Federal procurement opportunity that contains the provision at FAR 52.209-7, subject to the clause in FAR 52.209-9 in a current Federal contract, or applying for a Federal grant opportunity which contains the award term and condition described in 2 C.F.R. 200 Appendix XII?

No

Does your business or organization, as represented by the Unique Entity ID on this specific SAM record, have current active Federal contracts and/or grants with total value (including any exercised/unexercised options) greater than \$10,000,000?

Not Selected

Within the last five years, had the business or organization (represented by the Unique Entity ID on this specific SAM record) and/or any of its principals, in connection with the award to or performance by the business or organization of a Federal contract or grant, been the subject of a Federal or State (1) criminal proceeding resulting in a conviction or other acknowledgment of fault; (2) civil proceeding resulting in a finding of fault with a monetary fine, penalty, reimbursement, restitution, and/or damages greater than \$5,000, or other acknowledgment of fault; and/or (3) administrative proceeding resulting in a finding of fault with either a monetary fine or penalty greater than \$5,000 or reimbursement, restitution, or damages greater than \$100,000, or other acknowledgment of fault?

Not Selected

Exclusion Summary

Sep 09, 2024 09:21:15 PM GMT
<https://sam.gov/entity/DLNUVLRUVW17/coreData?status=null>

Page 1 of 4

Certification Regarding Lobbying

(To be submitted with each bid or offer exceeding \$100,000)

The undersigned certifies, to the best of his or her knowledge and belief, that:

- (a) No Federal appropriated funds have been paid or will be paid, by or on behalf of the undersigned, to any person for influencing or attempting to influence an officer or employee of an agency, a Member of Congress, an officer or employee of Congress, or an employee of a Member of Congress in connection with the awarding of any Federal contract, the making of any Federal grant, the making of any Federal loan, the entering into of any cooperative agreement, and the extension, continuation, renewal, amendment, or modification of any Federal contract, grant, loan, or cooperative agreement.
- (b) If any funds other than Federal appropriated funds have been paid or will be paid to any person for influencing or attempting to influence an officer or employee of any agency, a Member of Congress, an officer or employee of Congress, or an employee of a Member of Congress in connection with this Federal contract, grant, loan, or cooperative agreement, the undersigned shall complete and submit Standard Form-LLL, "Disclosure Form to Report Lobbying," in accordance with its instructions.
- (c) The undersigned shall require that the language paragraph 1 and 2 of this anti-lobbying certification be included in the award documents for all subawards at all tiers (including subcontracts, subgrants, and contracts under grants, loans, and cooperative agreements) and that all subrecipients shall certify and disclose accordingly.

This certification is a material representation of fact upon which reliance was placed when this transaction was made or entered into. Submission of this certification is a prerequisite for making or entering into this transaction imposed by 31, U.S.C. § 1352 (as amended by the Lobbying Disclosure Act of 1995).

The Contractor, Enprotec / Hibbs & Todd, Inc., certifies or affirms the truthfulness and accuracy of each statement of its certification and disclosure, if any. In addition, the Contractor understands and agrees that the provisions of 31 U.S.C. § 3801 et seq., apply to this certification and disclosure, if any.



Signature of Contractor's Authorized Official

Sage Diller, PE, Vice President

Printed Name and Title of Contractor's Authorized Official

January 23, 2025

Date

CONFLICT OF INTEREST QUESTIONNAIRE
For vendor doing business with local governmental entity

FORM CIQ

This questionnaire reflects changes made to the law by H.B. 23, 84th Leg., Regular Session.

This questionnaire is being filed in accordance with Chapter 176, Local Government Code, by a vendor who has a business relationship as defined by Section 176.001(1-a) with a local governmental entity and the vendor meets requirements under Section 176.006(a).

By law this questionnaire must be filed with the records administrator of the local governmental entity not later than the 7th business day after the date the vendor becomes aware of facts that require the statement to be filed. See Section 176.006(a-1), Local Government Code.

A vendor commits an offense if the vendor knowingly violates Section 176.006, Local Government Code. An offense under this section is a misdemeanor.

OFFICE USE ONLY

Date Received

1 Name of vendor who has a business relationship with local governmental entity.

Enprotec / Hibbs & Todd, Inc.

2 **Check this box if you are filing an update to a previously filed questionnaire.** (The law requires that you file an updated completed questionnaire with the appropriate filing authority not later than the 7th business day after the date on which you became aware that the originally filed questionnaire was incomplete or inaccurate.)

3 Name of local government officer about whom the information is being disclosed.

 Name of Officer

4 Describe each employment or other business relationship with the local government officer, or a family member of the officer, as described by Section 176.003(a)(2)(A). Also describe any family relationship with the local government officer. Complete subparts A and B for each employment or business relationship described. Attach additional pages to this Form CIQ as necessary.

A. Is the local government officer or a family member of the officer receiving or likely to receive taxable income, other than investment income, from the vendor?

Yes No N/A

B. Is the vendor receiving or likely to receive taxable income, other than investment income, from or at the direction of the local government officer or a family member of the officer AND the taxable income is not received from the local governmental entity?

Yes No N/A

5 Describe each employment or business relationship that the vendor named in Section 1 maintains with a corporation or other business entity with respect to which the local government officer serves as an officer or director, or holds an ownership interest of one percent or more.

6 Check this box if the vendor has given the local government officer or a family member of the officer one or more gifts as described in Section 176.003(a)(2)(B), excluding gifts described in Section 176.003(a-1).

7 Sage Diltz
 Signature of vendor doing business with the governmental entity

January 23, 2025

 Date