

STATEMENT OF QUALIFICATIONS

CITY OF BRECKENRIDGE

Professional Engineering Services for
2025/2026 TxCDBG Application and Project Implementation Services

January 23, 2025

January 23, 2025

Ms. Cynthia Northrop, MPA, CPM, City Manager
City of Breckenridge
105 North Rose Ave.
Breckenridge, TX 76424
cnorthrop@breckenridgetx.gov

**RE: STATEMENT OF QUALIFICATIONS FOR ENGINEERING SERVICES
2025/2026 TxCDBG APPLICATION AND PROJECT IMPLEMENTATION SERVICES**

Dear Ms. Northrop,

Thank you for the opportunity to provide our Statement of Qualifications (SOQ) to the City of Breckenridge for Engineering and Design Services for the 2025-2026 Texas Community Development Fund. Our SOQ includes supporting documentation demonstrating our ability to complete the required work. We are a full-service engineering, architectural, and planning firm with extensive experience in state and federally-funded projects. Our expertise includes:

- **Municipal Infrastructure** - MRB Group has decades of experience representing municipalities in the project identification, application preparation, study, design, and construction of state and federally-funded projects. We have completed similar projects with clients throughout Central Texas, including water and wastewater, streets, drainage, and other infrastructure projects.
- **State and Federally-Funded Projects** – This SOQ highlights our extensive experience in state and federally-funded projects, including the Community Development Block Grant (CDBG) administered by the Texas Department of Agriculture (TDA), Rural Water Assistance Fund administered by the U.S. Department of Agriculture (USDA), and Clean Water and Drinking Water State Revolving Funds (SRF) administered by the Texas Water Development Board (TWDB).
- **Projects Located in Central Texas** – With offices in Temple, Waco, and Austin, we concentrate on work in Central Texas, including but not limited to the Cities of Copperas Cove, Hillsboro, Granger, Mart, Rosebud, Bartlett, Jarrell, Milano, and Rockdale, Bell County, Coryell County, Falls County, Milam County, and numerous Water Supply Corporations (WSC) and Municipal Utility Districts (MUD.)

MRB Group's project managers and the staff in the Temple office are familiar with local conditions, regulations, and requirements. In addition, our project references will attest to our skills, capabilities, and willingness to go the extra mile for our clients. We are a competent engineering firm, licensed in Texas by the Texas Board of Professional Engineers, No. F-10615.

We would be honored and privileged to provide our expertise to the City of Breckenridge and look forward to the opportunity to discuss our qualifications further.

Sincerely,


Solomon Thomas, P.E.
Project Manager
Trey Taylor, P.E.
Deputy COO

1

SECTION 1
Firm Overview

39

SECTION 4
References

7

SECTION 2
Key Personnel

APPENDIX
Required Forms

24

SECTION 3
Project Experience

SECTION 1

FIRM OVERVIEW

FIRM OVERVIEW

SECTION 1

WHO WE ARE

MRB Group is an engineering, architecture, and municipal planning company passionately serving those who move our communities forward. We create inspiring places that simply work.

The company's evolution dates back to 1927, originating with the engineering and surveying firm Meloy Smith Engineers. For nearly a century, MRB Group developed into a resource focused on infrastructure and facilities that serve the public. From designing and building the places in which we work, heal, play, and learn, to the infrastructure systems that support it all, the mission of MRB Group is clear: make it work, make it last, make it cost-effective, and make it fulfill your vision. Our services go beyond design to support your pre-project stages from long-range planning and funding, to post-design construction administration. Whatever the project phase or stage, MRB Group is here to help realize your community's possibilities.

With physical offices in Texas, New York, and South Carolina, plus a reach well beyond, MRB Group is the best of both: local presence combined with substantial resources.



OUR DIFFERENCE

The MRB Group difference? It's our people. It is our passion to help our clients and their communities thrive, knowing the human impact of our collective work. So we listen intently. We respond with compassion. We create mutual trust. We solve short-term needs while planning for long-term possibilities. The results? Clients that have been with us for decades. Projects that have stood the test of time. Communities that flourish. And a company that continues to grow: one relationship, one success at a time.

Our licensed engineers, architects/designers, and planners provide a comprehensive range of professional services to county, municipal, utility, residential, and commercial clients in a range of fields, including:

- Civil Engineering
- Stormwater/Drainage
- Water Treatment and Distribution
- Wastewater Treatment, Collection, and Operations
- Transportation
- Construction Observation/Administration
- Funding Research
- Grant Writing/Administration
- Site Development
- Parks
- GIS Technology
- Environmental Services
- Planning
- Master Plans
- Economic Development Research/Strategies
- Architectural Design/Pre-Design, Interiors/Visualization

Our team of respected professionals collaborates closely with clients, providing trusted counsel and excellence across a wide range of fields.

With MRB Group, you get a passionate, pragmatic partner dedicated to helping your community thrive, one project at a time.



OUR EXPERTISE

Our world runs on complex systems. At MRB Group, we work to create, maintain, and manage those systems efficiently, and effectively. From infrastructure to water to energy, and beyond, we're here to help make life move forward. Ensuring compliance. Mitigating risks. Elevating the quality of life for the clients and communities we serve.

Engineering

With a history of successful projects and award-winning designs, we are dedicated to delivering robust and sustainable engineering solutions that cater to the unique needs of each community we serve. Our engineering services include:

- Water Treatment & Distribution
- Wastewater Treatment & Collection
- Flood Control/Stormwater Management
- Site Development
- Construction Phase Services
- Transportation



Grant Services

We will help you identify potential funding opportunities that align with your organization's mission and goals, walk with you through the process, and help support you once funding is secured. Our grant services include:

- Grant Writing
- Grant Research
- Grant Administration



Architecture

We specialize in designing and managing critical architecture products with a blend of forward-thinking design, a commitment to sustainability, and an attention to detail. We ensure seamless integration of architectural vision with practical functionality. Our architecture services include:

- Pre-Design Services
- Visualization & Presentation
- New Construction & Structural Design
- Adaptive Reuse & Historic Preservation
- Interior Design & Space Planning
- Sustainability/Resiliency & Wellness Design
- Landscape Architecture



Local Government Services

Our comprehensive local government services are designed to meet the unique challenges faced by municipalities. We are dedicated to the development and sustainability of communities, ensuring they are well-equipped to provide exceptional essential services while adapting to evolving needs. Our local government services include:

- Strategic Planning & Placemaking
- Economic Development & Market Analysis
- Development & Environmental Services
- Resource Development
- GIS
- Training & Capacity Building
- Organizational Development

MARKETS WE SERVE

MUNICIPAL

Where community and need intersect, we keep the systems of life working without issues. Whether it's the public buildings where communities are planned, the parks in which we play, the infrastructure that helps move our water, the roads and sidewalks we use, or the public safety facilities, we are here to help you move from plan to prosperity. We help with:

- Water & Wastewater Engineering
- Flood Control/Stormwater Management
- Transportation
- Municipal Facilities
- Parks & Recreation
- Public Safety
- Local Government Services
- Economic Development
- Grant Services
- Support Services

PRIVATE

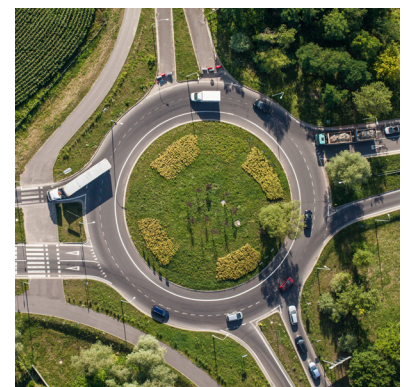
MRB Group helps organizations meet their potential. From business locations to restaurants. From residential subdivisions to multifamily structures. From tomorrow's need to historic preservation, we are ready to help fulfill your vision practically and beautifully. We help with:

- Commercial
- Residential (Subdivisions/Multifamily)
- Industrial
- Historic Preservation

EDUCATION

The halls and walls of educational institutions require vision and a deep understanding of the learning experience. Place and infrastructure determine how we learn, how students flow, how technology is embraced, how budgets are spent, and how the future is planned. From planning to the first class, we're here to help. We help with:

- K-12 Schools



- Higher Education (Colleges/Universities)
- Charter Schools
- Technical Colleges
- Training Centers

HEALTHCARE

There is little as critical as the architecture and engineering of our healthcare facilities. Design and implementation of these structures can impact outcome, comfort, and the healing process. MRB Group has the experience, the foresight, and the empathy to help make our centers of health into centers of excellence. We help with:

- Inpatient/Outpatient & Ambulatory Care
- Medical Offices
- Medical Specialities
- Medical Teaching Centers
- Healthcare Education Centers
- Mental Health Facilities

LIFE SCIENCES

Discovery and innovation is what we help empower. From laboratories to collaboration spaces to educational facilities, MRB Group helps make spaces that empower possibilities and unleash solutions that may literally change the world. We focus on science — but just as importantly — we focus on the life it serves.

- Research Facilities
- Private and University Laboratories
- Cleanroom Design
- Grow & Processing Facilities
- Pharmacies
- Dispensaries

CIVIC, CULTURAL & RELIGIOUS

MRB Group proudly helps develop the centers of life, conversation, and curiosity. From community centers to libraries to public spaces, we believe that beautiful spaces are key to helping encourage education, spur solutions, and invite opportunities for all. We help with:

- Community Centers
- Libraries
- Fire/Police/Ambulance Facilities
- Museums
- Churches & Religious Buildings
- Highway Department Facilities
- Municipal Offices
- Park Facilities

HOSPITALITY

A comfortable, inviting stay begins with dreaming. MRB Group helps you envision spaces that are as practical as they are welcoming, thinking of your business goals as much as we're bringing excellence to the guest and employee experience. We help with:

- Branded Hotels
- Boutique Hotels
- Restaurants
- Resorts
- Meeting & Event Venues

JUSTICE

MRB Group brings humanity to our justice spaces. From physical courts to correctional facilities, our unique experience brings a wealth of understanding of security needs, convenience, requirements, and comfort. We help with:

- Correctional Facilities
- Courts
- Public Safety Facilities



OFFICE LOCATIONS

Texas

TEMPLE (PRIMARY OFFICE FOR CITY OF BRECKENRIDGE

303 W. Calhoun Ave.
Temple, Texas 76501
254.771.2054

AUSTIN

WACO

New York

ROCHESTER

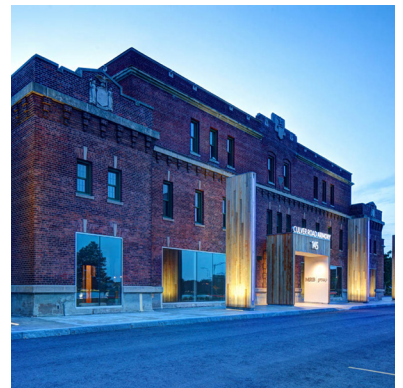
ALBANY, FINGER LAKES,

SARATOGA SPRINGS, SYRACUSE

South Carolina

CHARLESTON

COLUMBIA



CONTACT

Solomon Thomas, P.E.

Client/Project Manager
254.771.2054
solomon.thomas@mrbgroup.com

MRBGroup.com
info@MRBGroup.com

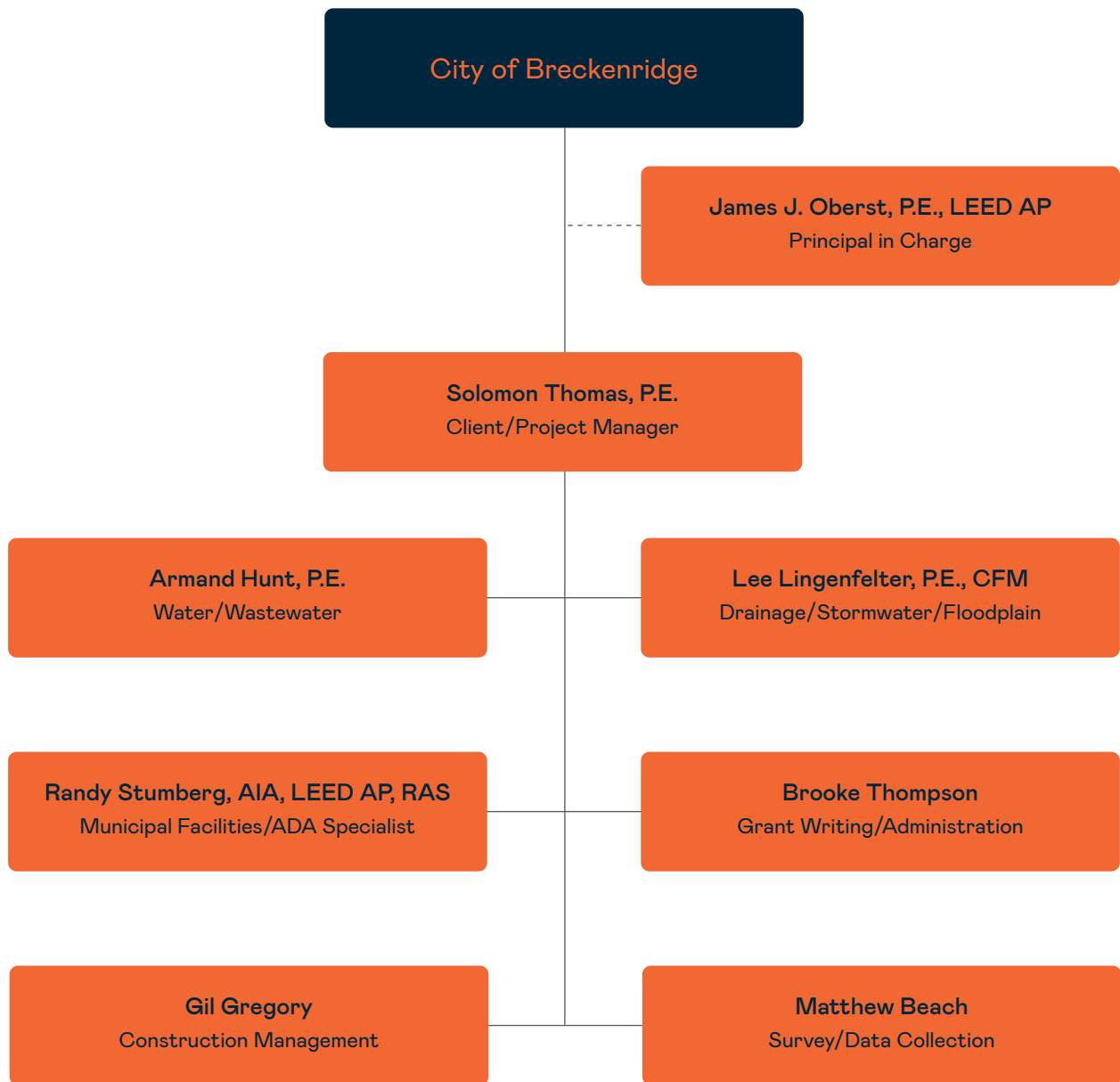


SECTION 2

KEY PERSONNEL

KEY PERSONNEL

MRB Group management will assemble the appropriate team to respond to specific project needs. At MRB Group, we have developed a client-studio organizational approach to manage a constantly evolving workload properly. Your Project Manager will coordinate technical resources shared across our cross-functional studios to advance multiple projects effectively. The organizational chart below represents the primary staff for the City of Breckenridge. We have included detailed resumes for these individuals in the following pages.





SOLOMON THOMAS, P.E.

PROJECT MANAGER

Expertise

COMPREHENSIVE PROJECT MANAGEMENT

Solomon has over 15 years of progressive planning, engineering, construction management, and facility operations experience with all sizes of transportation and related utility projects. He has coordinated significant infrastructure improvements, including a \$350 million highway expansion through Temple, Texas, improving gateway signage and landscaping, and facilitating connections to downtown and transportation hubs to support economic development. In addition, his responsibilities included facilitating public meetings to update the community and businesses.

MAIN STREET / RURAL COMMUNITY DEVELOPMENT SUPPORT

Solomon has managed numerous projects in small communities, including a \$4 million Main Street rehabilitation which provided sidewalks and connected the main thoroughfare to pedestrian and bicycle traffic. He has coordinated materials and finishes to support the historic character of communities and protect environmentally sensitive natural resources. His work with impacted businesses and elected officials minimized interruptions and impacts on local tourism through coordinated meetings and managing public outreach to properly inform and engage businesses and residents. Solomon's work also includes a \$3 million project which provided site rehabilitation and sidewalks, placed a pedestrian bridge over a railroad, and connected a regional medical center to major residential areas and businesses in a highly trafficked location. Extensive project coordination has involved railroads, local officials, regulatory agencies, businesses, and residents.

Other projects include numerous roadway and safety enhancements, bridges, gateway features, and specialized lighting; all meeting community needs within strict project budgets.

Solomon is TxDOT Local Government Project Procedures (LGPP) certified.

Key Projects

CITY OF TEMPLE

- *TxDOT FM 1741 Sidewalks
- *TxDOT FM 1741 Pedestrian Bridge and Sidewalks
- *TxDOT Spur 290 Rehabilitation, Sidewalks, and Gateway Signage/Landscape
- *TxDOT SH 53 Rehabilitation
- *TxDOT Loop 363 Rehabilitation
- *TxDOT FM 2305 Rehabilitation and Hike and Bike
- *TxDOT SH 317 Rehabilitation and Sidewalks

** personal portfolio*

A hands-on professional engineer with direct experience serving in project management, large-scale public utility operations and maintenance, as well as public administration as a former TxDOT Area Engineer. Powerful communicator/facilitator with specialized experience in fostering support and collaboration among project stakeholders, elected officials, state representatives and regulatory agencies.

Education

Master of Science, Mathematics, Tarleton State University, Stephenville, TX
Bachelor of Science, Civil Engineering, Arkansas State University, Jonesboro, AR

Professional License

Engineer:
Texas, No.102432
New York, No. 105723
TxDOT Local Government Project Procedures (LGPP)

Years of Experience

20





SOLOMON THOMAS, P.E.

Key Projects Continued

- *TxDOT FM 439 Rehabilitation and Sidewalks
- *TxDOT FM 2271 Rehabilitation
- *TxDOT/City of Temple FM 2483 Realignment, Rehabilitation and Sidewalks
- *TxDOT US 190 Rehabilitation
- *TxDOT SH 95 Rehabilitation

VILLAGE OF SALADO

- *TxDOT Main Street Rehabilitation and Sidewalks
- Mill Creek and Pace Park Mill and Overlay
- Stagecoach Circle Culverts & Drainage Improvements

CITY OF BUFFALO

- TDA Downtown Revitalization, Phase 2

CITY OF WACO

- TxDOT TA Cedar Ridge Neighborhood 19th Street Bike and Pedestrian Connection
- TxDOT Safe Routes to School – JH Hines
- Elm Ave TASA
- TxDOT Elm Ave Rehabilitation and Sidewalks
- Mars Drive and Old Hewitt Rehabilitation and Sidewalks
- *TxDOT FM 1637 Rehabilitation, Sidewalks, and Gateway Signage/Landscape
- *TxDOT Loop 574 New location Roadway and Sidewalks

CITY OF HARKER HEIGHTS

- TxDOT FM 3481 Rehabilitation and Sidewalks

CITY OF WOODWAY

- Bush Drive Reconstruction

*INTERSTATE 35

- Williamson County Line to Salado Road Reconstruction/Bridges
- Salado to Belton Road Reconstruction/Bridges, Sidewalks, and Environmentally Sensitive Areas
- Belton to Temple Roadway Resurfacing
- At Loop 363 Interchange Reconstruction
- South Loop 363 to North Loop 363 Road Reconstruction/Bridges and Sidewalks
- Temple to Troy Road Reconstruction/Bridges and Sidewalks
- Troy to Bruceville-Eddy Road Reconstruction/Bridges and Sidewalks
- Bruceville-Eddy to Hewitt Road Reconstruction/Bridges and Sidewalks

- Brazos River Frontage Road Bridges
- South Loop 340 to North Loop 340 Road Reconstruction/Bridges and Sidewalks
- Bellmead to West Road Reconstruction/Bridges and Sidewalks

CITY OF MCGREGOR

- *TxDOT SH 317 Rehabilitation and Sidewalks

CITY OF WEST

- *TxDOT Downtown Sidewalks

CITY OF HOLLAND

- *TxDOT SH 95 Rehabilitation and Downtown Drainage

CITY OF TROY

- TxDOT TA W. Main/Luther Curtis Rd. Transportation Improvements

CITY OF MILANO

- GLO Streets and Drainage Improvements

CITY OF BEVERLY HILLS

- ARPA Park Avenue Reconstruction

**personal portfolio*



ARMAND HUNT, P.E.

PROJECT MANAGER

Experienced Civil Engineer with a focus on local public and private water and wastewater clients. Strives to provide simple, innovative, and cost-effective solutions.

Works closely with senior team members throughout the construction process to include analyses, grant applications, property acquisitions, permitting, project design, bidding, and construction phase services.

Education

Bachelor of Civil Engineering, Auburn University, Auburn, AL

Professional License

Engineer:
Texas, No. 145330
Alabama, No. PE38457
New York, No. 109231

Professional Affiliations

OSHA 40-hour HAZWOPER
OSHA Construction Safety and Health 10-hour course

Years of Experience

9

Expertise

ENGINEERING

Armand brings relevant course experience in surveying, construction engineering, structural analysis, design-build, environmental engineering, Geotech, transportation, water and wastewater design, urban hydraulics, project management, and construction safety. In addition, he has field experience in environmental study and water line mapping.

PROJECT MANAGEMENT

Armand's background includes project implementation with clients to outline their needs, create and publish proposals, project design, pay requests, change orders, and closeout documentation.

Key Projects

CITY OF HILLSBORO

- Water Model Improvements and Analysis
- TWDB EST and Pump Station
- Industrial Park Water Distribution Improvements

CITY OF MART

- TWDB CWSRF WWTP Improvements

BELL COUNTY

- Bell County Museum Storage Facility Site Plan

CITY OF BARTLETT

- Water Model Improvements and Analysis

CITY OF BUFFALO

- Wastewater Treatment Plant Improvements

MOFFAT WSC

- Booster Station and Ground Storage Tank

CITY OF COPPERAS COVE

- 7 Mile Pump Station Improvements
- Pressure Regulating Valve Improvements
- Rattlesnake Mountain Elevated Storage Tank

439 WSC

- Whitish Ranch Pump Station, and Ground Storage Tank
- Pump Station 9 Improvements

CITY OF ROSEBUD

- Wastewater Treatment Plant Improvements

CITY OF TEMPLE

- Northwest 36" Water Transmission Main
- 41st-57th Water and Wastewater Improvements

** personal portfolio*





ARMAND HUNT, P.E.

Key Projects Continued

CITY OF CRAWFORD

- Water Well Improvements
- Water Treatment Plant Improvements

CITY OF BRUCEVILLE-EDDY

- GIS and Water Model Creation
- Falls County Water Main Improvements Phase 1

CITY OF MOODY

- WWTP Improvements

VILLAGE OF SALADO

- WWTP Expansion

CHATT WSC

- Public Water Supply Well #2

WCID #2

- Elm Mott Sewer Improvements

OTHER

- *Lauderdale County, AL Agricultural Center Authority Ag Center Lift Station and Force Main
- *Florence, AL Automatic Meter Reading Program, Cox Creek Interceptor, Heathrow Sewer Improvements, Killen Waterline Replacements, Galvanized Pipe Replacements, Phases 3 and 4
- *Muscle Shoals, AL Utility Board Automatic Meter Reading Program, Wilson Dam Road Sewer Extensions, Northeast Sewer System Improvements, and Rehabilitation
- *Limestone County, AL Water & Sewer Authority East Limestone Lift Station Improvements
- *Athens, AL Utilities Water Line Mapping and Coordinate Collection

** personal portfolio*



LEE LINGENFELTER, PE, CFM

PROJECT MANAGER

A design engineer and project manager with a strong focus on environmental stewardship and effective public assets and infrastructure management for long-term viability and community resiliency.

Experience in site development and transportation engineering, stormwater management, drainage, erosion and sediment control, water, wastewater, and utilities with a strong focus on client communication and engagement in both the design and project management process.

Education

B.S. in Civil Engineering, University of Iowa

Professional License

Engineer, Texas 144297
Certified Floodplain Manager, Texas 4506-23N

Professional Affiliations

Texas Floodplain Management Association (TFMA)

Years of Experience

13

Expertise

PROJECT MANAGEMENT

Over two decades of experience managing civil engineering projects, producing on-time, on-budget deliverables, coordinating with stakeholders to keep them informed, and maintaining contractor accountability. Projects include various civil engineering, site development, and transportation-related projects. Deliverables include construction documents, informational memos, opinions of probable construction costs, reports, and specifications.

DESIGN ENGINEERING

Includes water, wastewater, and utilities, materials testing and geotechnical investigations, with hands-on projects involving bridge inspections, replacements and repair; intersection improvements and connector road design; construction of noise walls; pedestrian safety improvements; retaining wall inspections; and roadway inspections and reconstruction, all providing a solid foundation for application-focused engineering that recognizes long term impacts of design decisions.

ASSET MANAGEMENT

Well-versed in Maximo (for asset management), including creating and conducting training for clients to fully utilize resources and tools to track and optimize infrastructure maintenance. Equally well-versed in readily available software applications for data tracking and planning to promote proactive management for greater efficiency of services and net cost savings.

CLIENT ENGAGEMENT

A strong communicator, keeping clients informed and engaged in the design process, ensuring adequately-translated needs and solutions are effectively implemented.

Key Projects

TEMPLE ISD, TEMPLE TX

- Kennedy-Powell Elementary School Driveway Design
- ISD Operations Center

TTS DISTRIBUTION, TEMPLE TX

- Site Development for Manufacturing Addition

BELL COUNTY, BELTON, TX

- Site Drainage/Grading for County Engineer's Office

CITY OF BUFFALO, TX

- Wastewater Treatment Plant Improvements

CITY OF HILLSBORO, TX

- Mark Street Drainage and Grading



** personal portfolio*



LEE LINGENFELTER, PE, CFM

Key Projects Continued

VILLAGE OF SALADO, TX

- Stagecoach Circle Drainage and Grading
- Plan, Plat, and Report Review

CITY OF BARTLETT, TX

- FIF Floodplain/Hydrologic/Hydraulic Modeling and Analysis
- Plan Review

FALLS COUNTY, TX

- FIF Floodplain/Hydrologic/Hydraulic Modeling and Analysis

MILAM COUNTY, TX

- FIF Floodplain/Hydrologic/Hydraulic Modeling and Analysis

CITY OF BRUCEVILLE-EDDY, TX

- Plan and Plat Review

BRUSHY CREEK MUD, ROUND ROCK, TX

- Plat and Report Review

CITY OF DUNCANVILLE, TX

- Drainage Improvements

CRYSTAL SPRINGS WATER COMPANY, CONROE, TX

- Utility System Evaluations

CITY OF JARRELL, TX

- Plan and Report Review

CITY OF MART, TX

- Lake Mart Dam Flood Control Planning
- Wastewater Treatment Plant Improvements

CITY OF YOAKUM, TX

- Parks and Open Space Master Plan

*CITY OF DESOTO, TX

- Engineering Design for 2021 Street Reconstruction Project

*FORT WORTH, TX

- Ft Worth TPW Bond Year 2 Contract 12

*DALLAS, TX

- Dallas PARD Anderson Bonner Park Erosion Control Improvements
- Dallas DWU Water and Wastewater Main Replacements at Various Locations
- Dallas DPW Community Drive Paving and Drainage Improvements

*VIRGINIA DEPARTMENT OF TRANSPORTATION (VDOT)

- Progress Park Connector Road Project Drainage Culverts
- Route 50 Bridge over Goose Creek Replacement and Repair Project

- Broadview Avenue Reconstruction Project Drainage Design

*MARYLAND STATE HIGHWAY ADMINISTRATION

- Route 1 Pedestrian Safety Improvements at Brewers Court Drainage Design

*DISTRICT OF COLUMBIA

- Water Asset Management Program at Blue Plains Advanced Wastewater Treatment Plant and Bryant Street Pumping Station
- DC Water First Street Tunnel Design of Erosion and Sediment Control

** personal portfolio*



RANDY STUMBERG, AIA, LEED AP, RAS

SENIOR ARCHITECT/TECHNICAL PRODUCTION

Randy is a highly-skilled architect with extensive experience in full range of services; from programming, through construction documents and construction administration. His diverse design background ranges from historical restoration and renovation, to schools and museums, hospitals and municipal facilities.

Education

Bachelor of Architecture, Texas Tech University College of Architecture

Professional License

Architect:
Texas 14797
Colorado ARC.00305157
New York 041620
Registered Accessibility Specialist:
Texas 314
LEED AP Certified, USGBC

Years of Experience

35

Expertise

PROJECT ARCHITECT

Local municipal projects, including new and renovation of government offices, utility offices, fire stations, museums, courtrooms, IT departments, park amenities, training centers, and civil infrastructure. Federal projects, including over 100 new construction and renovation projects on VA stations throughout Texas, in over ten years of indefinite-delivery contracts and \$30 million of a \$300 million prison project for the Colorado Department of Corrections. Private projects include a dozen corporate childcare centers, providing spaces for world-class childcare within the confines of corporate security and design requirements.

RENOVATION & REPAIR PROJECT EXPERTISE

Extensive knowledge and experience with restoring and repairing pre-existing design and construction issues, revitalizing old, dilapidated structures, and reimagining buildings that have progressed beyond their intended or primary usage. Experience includes additions and alterations to buildings constructed from the 1800s to the 1970s, complete and partial renovation, adaptive reuse, historical renovation, and abatement projects for lead-based paint, asbestos, and mold throughout all sizes and building types.

Key Projects

MUNICIPAL AND COUNTY GOVERNMENT PROJECTS CITY OF TEMPLE

- Solid Waste Complex
- City Hall Renovation
- Fire Station #8 and Emergency Operations Center
- Fire Station #3
- Fire Station #5 Renovation
- Fire Station #8 Burn Tower and Training Center
- Sammons Community Center Renovation
- Wilson Recreation Center Renovation
- Police Headquarters Remediation and Remodel
- Assorted Parks & Recreation Department Concession buildings, Restrooms, and assorted site structure projects
- Municipal Courts and Utilities Department
- Amcom Hangar and Office Building – Draughton Miller Airport
- Assorted renovations and additions to City offices and facilities throughout City-owned facilities





RANDY STUMBERG, AIA, LEED AP, RAS

Key Projects Continued

BELL COUNTY

- Diversion Center and Indigent Care Facility, Belton
- County Museum Expansion and Renovations, Belton (CA)
- Bell County Annex, Salado (CA)

CITY OF HARKER HEIGHTS

- Central Fire Station Renovation

CITY OF BELTON

- Potts Building Renovation for City IT Dept.
- Accessibility Design for Nolan Hike & Bike Path

COMMERCIAL AND PRIVATE PROJECTS

TEMPLE, TEXAS

- Renovations of 20,000-sf WWII barrack building into office space
- Road and parking lot replacement and enhancements
- Temple College Administration Building Renovation
- Temple College Foundation Historic Renovation for New Headquarters

BELTON, TEXAS

- University of Mary Hardin-Baylor – Chick-Fil-A renovation
- University of Mary Hardin-Baylor – Historical renovation of Curtis Mansion, ADA ramps
- University of Mary Hardin Baylor – Retrofit of 6 different dormitories and office buildings to bring them into current fire code compliance
- Belton Bridal Shop

VETERANS ADMINISTRATION OF CENTRAL TEXAS

- New 12,000-sf Urgent Care Center to serve Temple's Olin E Teague Medical Center
- Over 100 additional task orders completed through two 5-year Open Ended IDIQ contracts – Temple, Waco, and Marlin
- Architectural Consultant on other Federal design and design/build teams for various VA IDIQ contracts.

WACO, TEXAS

- Road and parking lot replacement and enhancements
- New Energy Center to serve over 40 buildings
- Historic exterior renovation of multiple buildings under Texas Historical Commission designation
- New 250,000 gal water tower and 500,000 ground tank for historical site

KILLEEN, TEXAS

- Documentation and design for the renovation of 8 neighborhoods and more than 2,000 houses on Ft Hood as part of a revitalization effort as a consultant of Lend Lease Actus.

AUSTIN, TEXAS

- Centene Childcare Facility

BUDA, TEXAS

- Creedmoor-Maha WSC – New Corporate Office

DALLAS, TEXAS

- Bryan's House Childcare and Assisted Care Center

TEMPLE ISD, TEMPLE, TEXAS

- Operations and Service Center Complex

BRUSHY CREEK MUNICIPAL UTILITY DISTRICT, ROUND ROCK, TEXAS

- Maintenance Complex, Georgetown
- Creekside Pool, Georgetown

COLORADO

- Close Custody Housing Unit – Limon Correctional Facility
- Renovation of Infirmary – Buena Vista Correctional Complex
- Parker Vista Elementary School – Parker Vista
- Windsor Middle and High School Renovation – Windsor

GEORGIA

- Chick-Fil-A Corporate Childcare Center, Atlanta
- Georgia Tech Childcare Center, Atlanta

OKLAHOMA

- OpubCo Corporate Childcare Center, Oklahoma City

OTHER

- Corporate Childcare Centers for Three Chase Bank Call-Center Locations, Houston (x2), and Arlington
- Chase Bank Childcare centers, Houston (x2) and Arlington
- HeartsHome Childcare Center, Houston
- Denton ISD – Virginia Gallian Child Development Center



BROOKE THOMPSON

CLIENT FUNDING MANAGER

Expertise

GRANT SERVICES

Utilizing exceptional communication skills, Brooke supports grant application processes and effective post-award administration on behalf of local governments, municipal utility districts, and water supply corporations. Her strict organizational methods promote on-time reporting and thorough narratives that result in expedited approvals and reimbursements, which are critically important to communities dependent upon revenue relief. Brooke also sits on the boards of two Historical agencies for the City of Hillsboro that review applications and grant funding.

STRUCTURAL ANALYSIS AND CHANGE MANAGEMENT

Brooke's ability to develop, implement, and communicate effective strategies optimizes organizational structural efficacy. In addition, she focuses on productivity, ingenuity, innovation, consistency, and increased positivity among personnel, along with recognition of the impacts of organizational change.

QUALITY ASSURANCE

As a former QA Specialist, Brooke's experience includes monitoring, inspecting, and proposing measures to correct or improve processes. Brooke excels at analyzing procedures to ensure quality standards are met, including compliance with stringent State and Federal guidelines.

ORGANIZATIONAL LEADERSHIP

Brooke facilitates corporate workgroups and leads planning processes to address challenges in internal communication, information sharing, and workflow management in order to develop solutions for identified areas of concern.

PUBLIC ENGAGEMENT

With a strong background in public service and local government, Brooke's unique understanding of the dynamics of public communication allows her to foster high levels of stakeholder participation, even in challenging environments. She can effectively engage groups, diffuse conflicts, and achieve resounding consensus.

A powerful communicator, skilled in preparing compelling narratives for public engagement and competitive grant writing. Successful in fostering positive relationships with and among community organizations/groups.

Experienced in managing effective workflow processes and procedures, with demonstrated capability in meeting and exceeding project and program requirements.

Focused on bridging local governments and public service utilities with community-building resources, promoting economic development opportunities, and bringing projects to fruition.

Education

BA in General Studies, Texas A&M University, Commerce

Professional Certifications

TDA CDBG Contract Administration
TxDOT Local Government Project Procedures (LGPP)

Organizations

Hillsboro Heritage League – Board President
Hillsboro Cell Block Museum – Board Member

Years of Experience

8

Key Projects

CITY OF WACO

- TxDOT Safe Routes to School – JH Hines Elementary
- TxDOT TASA Elm Ave. Sidewalks
- TxDOT TA Cedar Ridge
- TxDOT TA Indian Springs
- TxDOT TA MKT Trail

CITY OF MOODY

- TxCDBG Water Main and GST Rehabilitation

CITY OF HILLSBORO

- TWDB Industrial Park Water Improvements
- Strategic Planning
- TxDOT Safe Routes to School MS Ph. 2





BROOKE THOMPSON

Key Projects Continued

CITY OF GRANGER

- TxDOT Safe Routes to School K-8
- TxDOT TA Streetscapes Downtown

CITY OF TROY

- TxDOT Safe Routes to School Raymond Mays Middle School
- FHWA/TxDOT West Main/Luther Curtis Rd.

MILAM COUNTY

- TWDB Flood Infrastructure Fund

FALLS COUNTY

- TWDB Flood Infrastructure Fund
- TPWD Small Communities Park Grant – Falls on the Brazos Park

CITY OF BARTLETT

- TWDB Flood Infrastructure Fund
- TxDOT Safe Routes to School

CITY OF MARLIN

- TWDB DWSRF – Water Treatment Improvements
- TWDB CWSRF – Drainage Improvements

CITY OF ROSEBUD

- TWDB CWSRF – Wastewater Plant Improvements

CITY OF CHATT

- TWDB DWSRF – New Water Well

CHATT WSC

- TCEQ – Emergency Preparedness Plan

CORYELL COUNTY

- RCP – Land Use Plan



GILBERT P. GREGORY

SENIOR PROJECT MANAGER

Expertise

CONSTRUCTION MANAGEMENT/INSPECTION

Gil has had tremendous success assisting clients during the construction phase of their projects. He has served as a construction superintendent, field inspector, citizen consultant, and project manager on various types, sizes, and complex projects. Gil has inspected many public works projects throughout Central Texas. He performed surveying control and materials testing (concrete and paint) and confirmed project plan and specification conformance, working directly with City, County, State, and Federal governments during the inspections.

WATER/WASTEWATER COLLECTION AND TREATMENT

Gil has managed projects involving new or re-designing outdated infrastructure related to water and wastewater treatment facilities and system components. His experience also includes industrial, water, sewer, and permitting.

ENVIRONMENTAL PROJECT EXPERTISE

Gil has extensive knowledge of environmentally sensitive projects involving water quality issues, endangered species, and aquifer recharge. In addition, he has worked on numerous projects with neighborhood groups, concerned citizens, municipal staff, environmental boards, planning commissions, and city councils.

Key Projects

CONSTRUCTION MANAGEMENT EXPERIENCE

- Water and Wastewater Project Superintendent/Field Engineer:
- Troy WWTP Expansion – Troy, Texas
- Devine WWTP Expansion – Devine, Texas
- HWY 29 Lift Station – Georgetown, Texas
- Doshier Farm WWTP Expansion – Temple, Texas
- Dove Springs WWTP – Georgetown, Texas
- Copperas Cove WWTP Expansion – Copperas Cove, Texas
- Cibolo Creek WWTP Expansion – Cibolo, Texas
- Cuero WWTP Expansion – Cuero, Texas
- Round Rock WTP Chemical Feed Storage – Round Rock, Texas

CONSTRUCTION INSPECTION EXPERIENCE

CITY OF GATESVILLE

- North Fort Hood Lift Station
- Leon WWTP Expansion
- HWY 36 Lift Station
- Leon WWTP Forcemain Renovation

CITY OF COPPERAS COVE

- Hogg Mountain Ground Storage Tank

Extensive experience with project management, hydraulics, hydrology utility design and ordinance compliance. Over 30 years of construction and construction inspection experience on water and wastewater projects of various sizes. Highly respected in his field with vast experience working with federal, state and local regulatory and community agencies.

Education

Associates Degree, Civil Engineering, Texas State Technical Institute

Professional License

OSHA 10-Hour Construction Industry Outreach
USACE – CQM for Contractors #784

Professional Affiliations

Texas Public Works Association
Texas Water Utilities Association

Years of Experience

36





GILBERT P. GREGORY

Key Projects Continued

- Eastside Booster Pump Station
- Golf Course Reclaim System Optimization
- Rattlesnake Mountain EST

CITY OF TEMPLE

- 5th Street Extension
- 8th Street Extension
- Temple Airport AMCOM Hangar and Booster Pump Station
- 6-inch and 8-inch Pipe Bursting Project
- Fryer's Creek Wastewater Collection Line
- Taylor's Valley Lift Station and Forcemain
- Pea Ridge Lift Station
- Bird Creek Interceptor Phase 1
- Bird Creek Interceptor Phase 2A
- Bird Creek Interceptor Phases 3, 4A, 4B, 4C (Management)
- Northwest Loop 363 & Lucius McCelvey Waterlines (Management)

CITY OF KILLEEN

- Highway 195 Waterline Extension
- Bundrant Elevated Storage Tank
- Lake Road Waterline Extension
- Bundrant to Pump Station No. 3 16-inch Transmission Main
- Killeen Community Center & Senior Center Expansion & Renovation (Management)

BLUEBONNET WATER SUPPLY CORPORATION

- Phase III Filter Rehabilitation
- Phase IV Solids Handling

AMERICAN WATER MILITARY SERVICES

- BPS No. 7
- BPS No. 6898

CITY OF BARTLETT

- CDBG Clark Street Lift Station

MOFFAT WATER SUPPLY CORPORATION

- Booster Pump Station Renovation
- HWY 36 6-inch Waterline Extension

AQUILLA WATER SUPPLY DISTRICT

- Pipeline and Ground Storage Tank

CITY OF MART

- Highway 164 Utility Relocation
- Mart WWTP Expansion
- USDA Water System Improvements – Intake & Water Treatment Plant (Management)
- USDA Water System Improvements – Booster Pump Station HWY 164 (Management)

- USDA Water System Improvements – Distribution System Improvements (Management)
- USDA Water System Improvements – Water Transmission Main (Management)

CITY OF BUDA

- Beacon Hill Elevated Storage Tank
- Beacon Waterline Extension

CITY OF HARKER HEIGHTS

- Harker Heights WWTP UV System Upgrade
- Mountain Lion Road Expansion
- FM 2410 Community Park Phase I
- FM 2410 Community Park Phase II
- FM 2410 16-inch Waterline Extension
- Indian Trail Road Expansion
- Indian Trail 18-inch Waterline Extension
- TWDB – Demolition of 100,000 Gallon Standpipe
- TWDB – 200,000 Gallon EST
- TWDB – Pump Station No.1

BRAZOS RIVER AUTHORITY

- WMARSS WWTP Headworks and Aeration Basin Expansions
- WMARSS WWTP Andritz Triple Pass Drum Sludge Drying Facility
- Highway 84 Lift Station and Forcemain

SALADO WATER SUPPLY CORPORATION

- IH 35 TxDOT Relocation
- FM 2484 Booster Pump Station
- FM 2484 Pipeline
- FM 2484 Elevated Storage Tank

DH INVESTMENTS

- Johnson Ranch WWTP
- Johnson Ranch Water System

UNIVERSITY OF MARY HARDIN BAYLOR

- Sports Courts Relocation
- Crusader Stadium

CITY OF KILLEEN

- Highway 195 Waterline Extension
- Bundrant Elevated Storage Tank
- Lake Road Waterline Extension
- Bundrant to Pump Station No. 3 16-inch Transmission Main
- Killeen Community Center & Senior Center Expansion & Renovation (Management)

BRUSHY CREEK MUNICIPAL UTILITY DISTRICT

- Sam Bass Road Utility Relocation, Williamson County



GILBERT P. GREGORY

Key Projects Continued

PERMITTING PROJECT EXPERIENCE

- TPDES application administration process:
- Eagle's Wings WWTP – Diocese of Austin – Burnet, Texas
- The Hollows WWTP – Centex Homes – Lago Vista, Texas
- Northside WWTP – Northside Christian Church – Houston, Texas
- Bulverde/46 Partners WWTP – Bulverde/46 Partners LTD. – Bulverde, Texas
- Arrowhead Ranch WWTP – Forestar Real Estate Group – Dripping Spring, Texas
- Mart Water WTP Permit Renewal – City of Mart, Texas
- Marlin WWTP Permit Renewal – City of Marlin, Texas

TPDES SLUDGE APPLICATION AND PERMIT AMENDMENT APPLICATION ADMINISTRATION

- Leon WWTP Amendment – City of Gatesville, Texas
- Airport Sludge Application Site – City of Gatesville, Texas
- Backwash Discharge Permit – Schertz-Sequin Local Governmental Corporation – Gonzales, Texas
- Carothers Land Application - City of Gatesville, Texas
- New Permit WTP Land-Apply Sludge – City Marlin, Texas

STORMWATER PERMITTING PROCESS

ADMINISTRATION FOR THE BRAZOS RIVER AUTHORITY PROJECTS

- Waco Metropolitan Regional Sewerage System (WMARSS) – Waco, Texas
- Sugar Land Regional Sewerage System (SLRSS) – Sugar Land, Texas
- Brushy Creek Regional Wastewater System (BCRWS) – Round Rock, Texas
- Temple-Belton Regional Sewerage System (TBRSS) – Belton, Texas
- Leon WWTP - Gatesville, Texas
- Stillhouse WWTP - Gatesville, Texas

MISCELLANEOUS REPORTS, STUDIES, AND DATA ACQUISITIONS

- Vulnerability Assessment – Salado WSC – Salado, Texas
- Filter Efficiency Study – Bluebonnet WSC – Moffat, Texas
- Industrial Pre-Treatment Programs – Brazos River Authority – Waco, Texas
- Moffat CCN Expansion – Moffat WSC – Moffat, Texas

- 2009 Killeen CCN Expansion – City of Killeen Texas
- Nola Ruth/Indian Trail Drainage Study – City of Harker Heights, Texas
- West Bell WSC CCN Service Expansion – City of Killeen, Texas
- Water and Wastewater System Evaluation – Kickapoo Indian Reservation – McLeod, Oklahoma
- Lions Park Swimming Pool Evaluation – City of Temple, Texas
- Gatesville WTP Study – City of Gatesville, Texas
- Eagle's Wings Retreat Center Water and Wastewater Design Study – Diocese of Austin – Burnet, Texas
- South White Hall Road Water Well Permit – Moffat WSC – Moffat, Texas

MISCELLANEOUS STRUCTURES AND FACILITIES

- Killeen City-Community Center & Senior Care Center Expansion & Renovation, Construction Observation
- Bell County Jail Expansion/Remodel



MATTHEW BEACH

DATA COLLECTION MANAGER

Key Projects

CITY OF WACO

- TxDOT 11th/12th St. & Gurley St.
- Dallas St. Elm to Herring
- TxDOT Elm Ave
- TxDOT JH Hines Elementary Safe Routes to School
- Mars Dr. Dog Kennel
- Mars Drive Study
- The Preserve
- Trail Blazer Park Improvements
- Utilities and Roadway Elm and Forrest
- Utilities and Roadway Ph. 2 Hood to MLK
- Cedar Ridge Trail

CITY OF COPPERAS COVE

- TxDOT Bus-190
- TxDOT FM-116 and 3046 Sidewalks
- TxDOT The Narrows Pedestrian Corridor
- Ave D Downtown Revitalization Pedestrian Improvements
- Park Improvements
- Parks Masterplan

439 WATER SUPPLY COMPANY

- Sparta Road 12-inch water main

CITY OF CAMERON

- Cameron Parks Masterplan

CITY OF BARTLETT

- General Engineering
- Mapping and GIS Services
- Flood Planning Study

CITY OF BEVERLY HILLS

- ARPA Park Avenue Road Reconstruction

CITY OF ROCKDALE

- TxDOT Downtown Revitalization Project
- TxDOT Highway 79 Rehabilitation
- MDD Industrial Park
- Sumuel Park Splash Pad

CITY OF BELLMEAD

- 500K-gallon Elevated Storage Tank
- Sanitary Sewer Interceptor

Motivated professional with over twelve years of experience in land surveying practices including, title, boundary, topographic, lot staking, construction staking, collecting GIS data, compiling flow meter data, as well as operations of small unmanned remote aircraft. Highly competent in residential and commercial development, with keen knowledge of earth's natural processes and the contours created by them. In depth understanding of the local flora, fauna, environmental processes, and the effects caused by them. Extensive experience operating total stations, robotic total stations, GPS instruments, and Unmanned Aircraft Systems.

Education

Bachelor of Science in Geography,
Minor in Business Admin, Texas State University

Professional Certifications

Small Unmanned Aircraft Remote Pilot

Years of Experience

20





MATTHEW BEACH

Key Projects Continued

BELL COUNTY

- Jail Expansion
- Justice of the Peace, Salado

CITY OF BLUM

- CDBG Ground Storage Tank

TOWN OF BUCKHOLTS

- CDBG Wastewater Treatment Plant
- 2020 CDBG Wastewater Improvements

BRUSHY CREEK MUD

- Parkside on the River

CITY OF BUFFALO

- Downtown Revitalization Project

CREEDMOOR-MAHA WSC

- FM-1327 Waterline

DOG RIDGE WATER SUPPLY

- FM-1670 10-inch Water Main
- FM-2410 Roadway Bore
- G. Wilson Rd. Water Main

CITY OF ELM MOTT

- Truck Wash Facility

CITY OF GRANGER

- CDBG Lift Station
- CDBG Wastewater Improvements
- CDBG Wastewater Treatment Plant
- TxDOT SRTS

CITY OF HARKER HEIGHTS

- Head Start

CITY OF HILLSBORO

- Economic Development Corporation Waterline
- Itasca Bridge Improvements
- Morrow Drive
- Texas Water Development Board Elevated Storage Tank

CITY OF JARRELL

- 12-inch Waterline Extension
- 2015 CDBG Double Creek Wastewater System, Phase 3
- CDBG -Wastewater
- Economic Development Corporation 12-inch Waterline
- Meadow Valley Loop Wastewater Line
- Wastewater Improvements
- Wastewater Treatment Plant
- Donahoe Creek Parallel Interceptor
- 1st Street and Double Creek Wastewater

CITY OF JOHNSON CITY

- ISD Bond Projects

CITY OF KILLEEN

- Condor Park and AA Lane Park

CITY OF LORENA

- Water and Sanitary Sewer GIS

CITY OF MARLIN

- Drainage System Improvements
- TWDB CWSRF Drainage System Improvements

CITY OF MART

- TWDB CWSRF Wastewater Improvements

CITY OF BLUM

- CDBG Ground Storage Tank

CITY OF MILANO

- GLO Roadway Infrastructure and Drainage Improvements

MOFFAT WSC

- New Water Supply Well

CITY OF MOODY

- Watermain

CITY OF MORGAN'S POINT RESORT

- Water Line Improvements
- FM-2483 RPZ and Road Bore

CITY OF ROSEBUD

- TWDB Wastewater Facility

CITY OF TAYLOR

- 4th St. Pavement Rehabilitation
- 4th St. Sidewalk Repair

CITY OF TEMPLE

- Ave T to Ave R Drainage Improvements
- Fairview and Sunset Drainage
- Hogan Road Widening
- MLK and Ave B
- Citizens for Progress MLK
- Solid Waste Complex
- NW Loop 363 12-inch Waterline

CITY OF TROY

- TxDOT Front Street Extension
- N. Old Hwy 81 Road Reconstruction
- Raymond Mays SRTS
- TWDB 2015 Water Well Expansion
- TxDOT SRTS

CITY OF VENUS

- CDBG Water Improvements



MATTHEW BEACH

Key Projects Continued

CITY OF WEIR

- CDBG Community Center

CITY OF WOODWAY

- Bush Drive Reconstruction

FALLS COUNTY

- TWDB Flood Planning Study

MILAM COUNTY

- TWDB Flood Planning Study

BISTONE MWSD

- Water Improvements

ARTCO BELL FACILITY, TEMPLE

MEAN SEA LEVEL OF POWER LINES OVER LAKE WACO

TEMPLE COLLEGE

- Softball Restrooms

HILL COUNTY

- Annex

CITY OF HOLLAND

- AMPSS Small System Inventory

WINDMILL FARMS HOA

- Access Drive Improvements

SECTION 3

PROJECT EXPERIENCE

PROJECT EXPERIENCE

SECTION 3

CIVIL ENGINEERING

The following pages include narratives from several representative projects in which MRB Group served as the prime professional consultant. MRB Group offers a wide range of expertise across water resources and management systems, the planning and design of critical buildings and facilities, and solutions that create mobility and mitigate environmental impact.

From needs assessments, system design, and construction phase services to serving in an advisory capacity, MRB Group helps our clients provide community services and protect critical assets with practical solutions. Our services include, but are not limited to:

Water Treatment & Distribution

COMPETENCE MEETS CONFIDENCE FROM MODELING TO DESIGN TO OPERATIONS.

- Treatment Plant & Process Design
- Water Storage Design/Rehabilitation
- Pump Station & Transmission Main Design
- Distribution System Design
- Hydraulic Modeling
- Water District Formations
- Rehabilitation of Aging Infrastructure
- Pilot Studies/Process Evaluations
- Asset Management Strategies/Plans
- Operational Assistance

Wastewater Treatment & Collection

COMPLEXITY MEETS EXPERTISE, HELPING WITH EVERY FACET OF SYSTEMS AND EVERY STEP OF THE PROCESS.

- Treatment Plant & Process Design
- Collection System Design
- Pump Station & Forcemain Design
- Infiltration & Inflow (I & I) Studies & Remediation
- Rehabilitation of Aging Infrastructure
- Wastewater System Modeling (BioWin)
- Operational Troubleshooting
- Regulatory Compliance/Permitting
- Sewer District Formation
- Asset Management Strategies/Capital Improvement Plans
- Operational Efficiency
- Process Evaluation

Transportation

KEEPING COMMUNITIES MOVING IN ONE DIRECTION: FORWARD.

- Roads
- Culverts

- Bridge Design
- Sidewalks
- Walkable Communities

Site Development

PREPARING, COORDINATING, AND CLEARING OBSTACLES TO SUCCESS.

- Residential/Commercial Development
- Site Development Grading
- Stormwater Management Design
 - Regulatory Compliance
 - Collection System Design
 - Stormwater Pollution Prevention Plans (SWPPP)
- Infrastructure Rehabilitation & Design
- Greenspace & Park Design
- Roadways
- Permitting and Regulatory Approvals

Construction Phase Services

THE KNOWLEDGE AND DILIGENCE TO OVERSEE THE IDEAL CONDITIONS FOR SUCCESS.

- Construction Contract Administration
- Construction Observation

Data Collection

HELPING SEE THE WORLD FROM A PERSPECTIVE OF PROGRESS.

- GIS

Grant Services

ALLOW US TO TAKE ON YOUR GRANT RESEARCH, WRITING, ADMINISTRATION, AND MORE IN ORDER TO EMBRACE YOUR ORGANIZATIONAL STRENGTHS WHILE OPENING POSSIBILITIES.

- Grant Writing
- Grant Research
- Grant Administration



ARCHITECTURE

At MRB Group, we work alongside our clients to achieve their short-term visions while always keeping an eye toward long-term sustainability. From visualization to planning to extraordinary results, we're here every step of the way.

Pre-Design Services

LAYING THE FOUNDATION FOR SUCCESSFUL PROJECTS WITH THOROUGH PLANNING AND ANALYSIS.

- Feasibility Studies
- Site Evaluations
- Regulatory Requirements Review
- Programming
- Project Phasing
- Project Scheduling

Visualization & Presentation

TRANSFORMING IDEAS INTO VISUAL NARRATIVES FOR CLARITY AND IMPACT.

- Concept Renderings
- High-Resolution Renderings
- Zoning & Planning Board Submissions
- Animation

New Construction & Structural Design

BUILDING THE FUTURE WITH INNOVATIVE AND ENDURING STRUCTURES.

- Structural Design of New Buildings & Expansions/Renovations
- Pre-Engineered Building Foundation Design

Adaptive Reuse & Historic Preservation

RESPECTING THE PAST, REIMAGINING THE FUTURE.

- Historic Renovations/Rehabilitations
- Strategic Planning
- Structural Evaluations
- Condition Assessments
- Load Capacity Assessments
- Fire Damage/Condemnation Assessments

Interior Design & Space Planning

CRAFTING INTERIORS THAT REFLECT IDENTITY, FUNCTIONALITY, AND STYLE.

- Space Planning
- Programming
- Interior Fit-Outs
- As-Built Documentation
- Furniture Layout & Selection
- Material & Finish Selections
- Relocation Coordination
- Post Occupancy Services

Sustainability/Resiliency & Wellness Design

DESIGNING WITH A CONSCIENCE FOR A SUSTAINABLE FUTURE.

- Sustainable Material Selections & Design Solutions
- LEED
- Net Zero
- Design for Resiliency
- Application of Wellness Design Principles



LOCAL GOVERNMENT

Complexity. Budgets. Long-term planning. Requirements and demands. The world of local government is critical to community success, and requires a partner who understands every level of need, and is proactive about what is to come. MRB Group's local government services are designed to help be an extension of your world.

Strategic Planning & Placemaking

COMMUNITYWIDE OR NEIGHBORHOOD FOCUSED – OUR PLANNERS ASSIST YOU IN CREATING FOUNDATIONAL PLANS FOR FUTURE GROWTH.

- Comprehensive & Long-Range Planning
- Focused-Area Planning (Neighborhoods, Corridors, Business Districts)
- Growth Management Planning
- Zoning & Development Regulations

Economic Development & Market Analysis

ATTRACTING INVESTMENT TO YOUR COMMUNITY BUILDS WEALTH FOR RESIDENTS AND LIGHTENS THE BURDEN OF LOCAL GOVERNMENT COSTS ON LOCAL TAXPAYERS.

- Economic Development Strategy – Business Recruitment, Retention, and Expansion
- Housing Strategy – Ensuring a Sound Housing Stock for Your Workforce and Beyond
- Project Impact Analysis – Defining Benefits to the Community of New Investment
- Incentive Program Development & Administration

Development & Environmental Services

ACCELERATING PROJECT DEVELOPMENT, WHILE PROTECTING YOUR QUALITY OF LIFE.

- Embedded Planning Services (On-Site Assistance for Project Applicants)
- Project Development Review (Site Plan Review, Zoning Compliance)
- Stormwater Management (MS4 Compliance)
- State & Federal Environmental Review (NEPA, SEQ, etc.)

Resource Development

GRANTS AND OTHER FUNDING TO ADVANCE YOUR GOALS.

- Identifying External Funding for Your Community's Highest Priorities
- Funding Needs Assessments & Resource Planning
- Grant Research & Competitiveness Analysis
- Grant Acquisition & Administration
- Funding Campaign Development & Advocacy

GIS

BRINGING VISUAL CLARITY TO CRITICAL PROJECTS AND COMMUNICATING ASSET NEEDS AND OPPORTUNITIES CLEARLY TO YOUR COMMUNITY AND BEYOND.

- Mapping & Managing Critical Assets (Water & Sewer Infrastructure, Streets, Buildings)
- Natural Resource Inventory (Wetlands, Viewsheds, Farmland, Urban Forest)
- Infrastructure Workload Planning (Work Order Tracking, Time Allocation)
- Project Visualization (Site & Project Maps, Planning & Zoning Maps, Voting Districts)

Training & Capacity Building

OPTIMIZING YOUR TEAM TO BETTER SERVE THE COMMUNITY.

- Organizational Assessments & Strategic Plans
- Performance Management & Professional Development
- Planning/Zoning Board & Commission Training
- Staff Development



GRANT SERVICES

MRB Group helps identify, pursue, and maximize opportunities. Allow us to take on your grant research, writing, administration, and more in order to embrace your organizational strengths while opening possibilities. Every step of the way.

Grant Research

PROACTIVELY MONITORING POTENTIAL RESOURCES AND STAYING UPDATED WITH CURRENT GRANT PROGRAMS TO IDENTIFY FUNDING OPPORTUNITIES.

- Monitoring Potential Resources
- Maintaining Program Updates

Grant Writing

CRAFTING APPLICATIONS FOR A VARIETY OF GRANT PROGRAMS TO FULLY EMBRACE POSSIBILITIES.

- Engineering Planning
- Water Infrastructure and Distribution
- Wastewater Infrastructure, Collection, and Treatment
- Floodplain Management
- Stormwater and Drainage
- Downtown Revitalization
- Roadways, Sidewalks, and Trails
- Community Development
- Parks and Recreation
- Rural Development

Grant Administration

PROVIDING SUPPORT IN MANDATED REPORTING, PROTOCOLS, AND TRAINING.

- Support for Mandated Reporting
- Reimbursement Documentation
- Establishment of Local Administration Protocols
- On-Site Training



RELEVANT EXPERIENCE

MRB Group has worked closely with many client communities that have pursued and completed state and federally-funded projects. As a result, our team members are well-versed in program objectives for funding agencies and their requirements for compliance. Some of those clients/projects include, but are not limited to:

City of Sweeny

- ARPA Water System & Drainage Study

City of Lorena

- ARPA Confederate Drive Sewer Rehab
- ARPA Frontage Road Water Line Improvements

City of Mart

- TWDB/USDA New Water Treatment Plant/System Improvements*
- TWDB Flood Infrastructure Fund
- TWDB Wastewater Treatment Plant/Collection System
- CDBG Hawkins Elevated Storage Tank
- CDBG WWTP Headworks Upgrade
- CDBG Wastewater Treatment Plant Improvements 2017

City of Bartlett

- TWDB Flood Infrastructure Fund – City-Wide Flood Study**
- TxDOT Safe Routes to School
- CDBG Clark Street Lift Station
- ARPA Bell Street Water System Improvements
- TWDB CWSRF Wastewater Treatment Plant and System Improvements*

City of Jarrell

- TWDB CWSRF Wastewater Improvement
- TWDB Wastewater Plant Expansion**
- CDBG Wastewater System Improvements 2013-2014**
- CDBG Water Improvements 2012**
- CDBG E. Ave. A Water Line Improvements 2020
- ARPA CR305 Water Line Infrastructure Improvements 2022
- CDBG CR307 Water Line Improvements 2022

City of Rosebud

- TWDB CWSRF Wastewater and Water System Improvements
- TWDB Wastewater System Improvements 2023
- CDBG Wastewater Improvements
- CDBG Water Improvements

City of Eldorado

- TWDB CWSRF Wastewater System Improvements
- TWDB DWSRF Water Line and Elevated Storage Tank 2020*
- TxDOT Neighborhood Connector
- CDBG Water System Improvements

City of Granger

- TxDOT Safe Routes to School K-8**
- TxDOT Downtown Streetscape
- CDBG Wastewater Treatment Improvements**
- CDBG Lift Station Replacement 2017
- CDBG Water Improvements 2013**
- CDBG Pecan Street Drainage Project**
- CDBG Drainage Improvements 2014**

City of Rockdale

- TxDOT TASA US Highway 79 and Cameron Ave.
- TxDOT TA Hwy 79/Downtown Rehabilitation*
- CDBG Water Valve Insertion
- Municipal Development District Parking Lot
- TPWD Sumuel Park Splash Pad

City of Temple

- TxDOT Safe Routes to School, Bonham MS and Lakewood Elementary**
- CDBG MLK Sidewalk and Lighting Improvements, Phases 1 through 4

City of Troy

- TWDB Water Well Expansion, GST, Pump Station* **
- TWDB DWSRF Water Improvements
- TxDOT Safe Routes to School Phases 1 and 2**
- TxDOT TA Downtown Revitalization
- TxDOT TA W. Main/Luther Curtis Rd. Transportation Improvements
- TxDOT SRTS Raymond Mays Middle School Sidewalks**
- CDBG Downtown Wastewater Improvements 2012
- CDBG Downtown Wastewater System Improvements 2010
- TPWD Trojan Park Splash Pad**

*MRB provided Grant Writing
**MRB provided Grant Administration



Milam County

- TDA CDBG CR Loop 203 Drainage Structure Replacement 2023*
- TWDB Flood Infrastructure Fund County-Wide Flood Study**

City of Hutto

- TxDOT Transportation Enhancement FM 1660 Hike and Bike Trail**

City of Crawford

- TWDB Water Well Improvements

City of Waco

- TxDOT Grant Application Preparation
- TxDOT TA 11th/12th- Gurley Streets
- TxDOT TASA Elm Avenue Sidewalks
- TxDOT SRTS J.H. Hines Elementary Sidewalks
- TxDOT Cedar Ridge Trail Sidewalks/Roadway**
- TxDOT MKT Trail**
- TxDOT Indian Springs Sidewalks**

City of Copperas Cove

- TxDOT Ave D Downtown Revitalization**
- TxDOT FM 116/3046 Sidewalk Improvements**
- TxDOT Business 190 Improvements
- TxDOT The Narrows Sidewalk Improvements

City of Del Rio

- TWDB Water Quality Master Plan

Town of Buckholts

- TWDB DWSRF Water Meter Replacements

City of Hillsboro

- EDA Water Line Replacement 2021
- TWDB DWSRF Water System Improvements
- TxDOT SRTS Hillsboro Middle School Phases 1 and 2**
- TDA Texas Capital Fund Water, Dewater, and Roadway
- TWDB New EST, Pump Station, GST, Water Main Upgrades 2023*

City of Pharr

- TWDB CWSRF and EDAP Water Improvements

City of Alpine

- TWDB DWSRF Water System Improvements

City of Marlin

- TWDB CWSRF Drainage System Improvements
- TWDB DWSRF Water Treatment System Improvements 2024
- TDA Replacement of the City's Residential Meters

City of Buffalo

- TDA Downtown Revitalization Project (DRP)
- TxDOT Jr. High School Connector
- GLO Wastewater Treatment Plant Improvements

Moffat WSC

- TWDB New Elevated Storage Tank
- TWDB Booster Pump Station Replacement

Nueces River Authority

- TWDB Wastewater System Improvements, including new Wastewater Plant and Collection System

Falls County

- TWDB Flood Infrastructure Fund – County-Wide Flood Study**

Creedmoor-Maha WSC

- TWDB Water System Improvements
- FEMA Twin Creeks Road Water Line Replacement* **

City of Moody

- TWDB Wastewater Plant*
- CDBG Water Main Transmission Line

City of Valley Mills

- CDBG Ground Storage Tank 2013
- CDBG Wastewater Improvements
- CDBG Water Improvements

City of Bellmead

- CDBG Water Improvements 2013
- CDBG Water Meter Replacement 2017

City of Beverly Hills

- ARPA Park Avenue Street Rehabilitation

City of Lorena

- ARPA Confederate Drive Sewer Rehab
- ARPA Frontage Road Water Line Improvements

City of Sweeny

- ARPA Water System & Drainage Study

City of Milano

- GLO Streets and Drainage Improvements

McLennan County

- Elm-Mott 2021-2022 CDBG Projects

Coryell County

- GLO RCP Land Use Plan**



DRAINAGE STRUCTURE REPLACEMENT

PROJECT PROFILE

Milam County solicited the services for this project in its application for funding and project implementation of a contract from the 2021-2022 Community Development Fund of the Texas Community Development Block Grant (CDBG) Program of the Texas Department of Agriculture–Office of Rural Affairs (TDA).

MRB Group submitted a Qualifications Statement on March 1, 2021, was selected as Project Engineer, and assisted the Client with the CDBG application.

Due to a deteriorated vehicular bridge, rain events caused public safety concerns. The application recommended the reconstruction of the existing 2-barrel, 36-inch ARCH CMP drainage structure located at County Road 203 Loop located within Milam County. The structure was replaced with a pre-cast concrete structure sized to pass the 5-year storm.

MRB Group’s services included preliminary and final engineering plans and specifications, bidding services, construction administration, and close-out.

CLIENT/LOCATION

Milam County, Texas

PROJECT STATUS

Completed 2023

PROJECT COST

Est. \$405,100

REFERENCE

The Honorable Steve Young
County Judge
254.697.7000
s.young@milamcounty.net



WATER LINE AND ELEVATED STORAGE

PROJECT PROFILE

MRB Group worked with the City of Eldorado to secure funding for much-needed water system improvements and provide engineering design and construction support for these facilities. MRB Group assisted the City in obtaining \$1.2 million in funding from the Texas Water Development Board Drinking Water State Revolving Fund (DWSRF). The City also qualified for a low-interest loan through this program. In addition, MRB Group worked with the Texas Department of Agriculture to secure additional funding for the project to include a second segment of needed water line improvements within the facilities to be constructed.

The overall project included the installation of 5,700 linear feet of a 6-inch water line that loops the water system to improve pressure and eliminate dead ends in the system. Also, the construction of a new 100,000-gallon elevated storage tank on the southwest corner of town replaced the aging 50,000-gallon elevated storage tank at City Hall. Decommissioning the old tank was also included in the project.

MRB Group prepared an Engineering Feasibility Report for the project and then prepared plans and specifications for construction. MRB Group also provided engineering services during the bidding and construction phases of the work, including construction administration and observation.

CLIENT/LOCATION

City of Eldorado, Texas

PROJECT STATUS

Completed 2020

PROJECT COST

Est. \$1.55 million

REFERENCE

Karla Reyes,
City Secretary
325.853.2691



WASTEWATER TREATMENT PLANT IMPROVEMENTS & EXPANSION

PROJECT PROFILE

MRB Group completed the design of improvements to the City's wastewater treatment plant (WWTP) under the Community Development Block Grant (CDBG) program and is currently designing an expansion to the same facility funded in part by the Clean Water State Revolving Fund of Texas.

The City's WWTP had experienced many overflow instances from the existing headworks, a manual bar screen located in the influent channel. The headworks were reconfigured to install a mechanically-cleaned bar screen and allow for a by-pass to the existing manual bar screen in accordance with State rules. The second portion of the project consisted of renovations to the existing Influent Lift Station, replacing all worn-out parts and pumps inside the existing wet well which had deteriorated over the years to the point that the pipes had visible holes. In addition, a hydraulic analysis of the WWTP indicated that plant overflows were also possible due to undersized gravity sewers connecting the various plant unit processes. Therefore, the project design included upsizing these lines to provide a capacity more consistent with plant capabilities.

Current design phase is addressing expansion of the existing facilities to address overflow, as analysis showed the facility still routinely exceeded 95% of permitted daily flow. Improvements to reduce I&I in the collection system includes repairs to approximately 7,900 linear feet and 18 manholes across the collection system. Additional video inspection of approximately 17,000 linear feet and 20 manholes has been conducted under the project as a special service, and repairs designed and constructed to the extent possible within the proposed project funding.

Proposed improvements to the WWTP will generally include:

- Install new lift station pumps with larger pumping capacity
- Construct new process structures with aeration basin and clarifier
- Improve waste activated sludge pumping
- Construct new aeration blower facility
- Construct new chemical feed facility
- Expand chlorine contact basin
- Improve recycle sludge pumping
- Construct new aerobic digester basin
- Construct new sludge drying beds, if required
- Construct all associated yard piping improvements
- Construct all associated electrical improvements and new motor control center facility
- Install all associated instrumentation and SCADA facilities

CLIENT/LOCATION

City of Mart, Texas

PROJECT STATUS

Phases 1 & 2 - 2017
Phase 3 Currently in Design

PROJECT COST

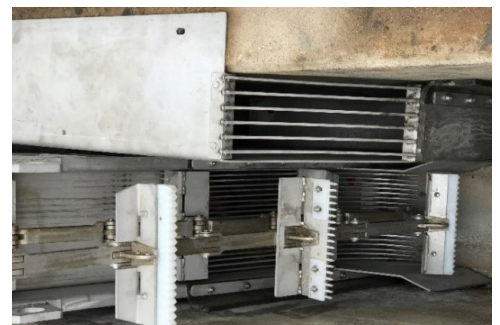
Est. \$6.6 million

REFERENCE

Shane James,
City Administrator
254.876.2462



Photos represent existing conditions



WATER LINE REPLACEMENT

PROJECT PROFILE

MRB Group was contracted by the City of Jarrell for professional engineering services to install a new 12-inch water line in the right-of-way of North 1st Street/County Road 307.

In 2021, Williamson County was awarded a Community Development Block Grant (CDBG) from the U.S. Department of Housing and Urban Development. The City is a sub-recipient to the County and requested funding for new water lines to be constructed within its service area.

The first new water line begins at the intersection of West Avenue A and North 1st Street. It extends north along North 1st Street/County Road 307, approximately 1,500 feet, to connect with a new water line to be constructed as part of the Cielo Gardens subdivision development.

The new 12-inch water lines include gate valves, fittings, fire hydrants, and asphalt/concrete replacement. The project is the continuation of several projects to extend water lines within and around the City to provide improved interconnections of water lines within the system, known as “water line looping.”

MRB provided the design, including topographic surveying, bidding, construction administration, and construction observation.

The entire project was CDBG-funded. MRB also provided funding agency coordination, review, and approval.

CLIENT/LOCATION

City of Jarrell, Texas

PROJECT STATUS

Completed in 2023

PROJECT COST

Est. \$278,000

REFERENCE

Jorge Hernandez, P.E.
Director of Development
Services/Interim City Manager
512.746.4593



NEW WATER LINE

PROJECT PROFILE

MRB Group was contracted by the City of Jarrell for professional engineering services to install a new 12-inch water line in the right-of-way of Avenue A and 5th Street.

In 2020, Williamson County was awarded a Community Development Block Grant (CDBG) from the U.S. Department of Housing and Urban Development. The City is a sub-recipient to the County and requested funding for a new water line extension within its service area.

The new water line begins at East Avenue C and North 5th Street intersection and extends along North 5th Street, then East Avenue A. The new line extends around 2,200 feet to 1st Street along Avenue A. The new water line includes gate valves, fittings, fire hydrants, and asphalt/concrete replacement. The project was the first of several projects to extend water lines within the City, providing improved interconnections of water lines within the system, known as “water line looping.”

MRB provided the design, including topographic surveying, bidding, construction administration, and construction observation.

The entire project was CDBG-funded. MRB also provided funding agency coordination, review, and approval.

CLIENT/LOCATION

City of Jarrell, Texas

PROJECT STATUS

Completed in 2023

PROJECT COST

Est. \$480,000

REFERENCE

Jorge Hernandez, P.E.
Director of Development
Services/Interim City Manager
512.746.4593



WASTEWATER IMPROVEMENTS

PROJECT PROFILE

After receiving approval for a Texas Community Development Block Grant (TxCDBG) from the Texas Department of Agriculture in 2021, the Town of Buckholts contracted with MRB Group for engineering design services to replace the existing 4,300 feet of 6-inch wastewater line that roughly parallels west of FM 1915 on the south side of town. The line traverses behind residential houses and across a cultivated field, which increases the possibility of infiltration and inflow due to the remote location and lack of consistent inspection.

MRB is providing replacement evaluation, engineering design, topographic surveying, contract document preparation, bidding, and construction administration.

MRB Group also provided engineering support for the 2018 CDBG application and engineering design services for the work outlined within the application.

CLIENT/LOCATION

Town of Buckholts, Texas

PROJECT STATUS

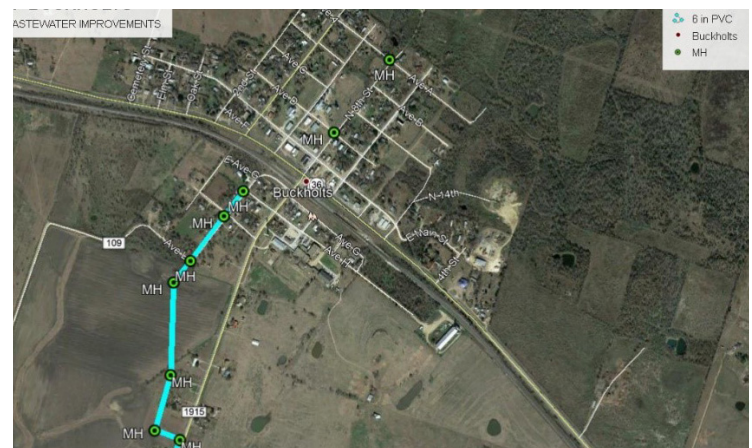
Completed in 2023

PROJECT COST

Est. \$263,500

REFERENCE

The Honorable Terri Eaton,
Mayor
254.593.3111



WASTEWATER IMPROVEMENTS

PROJECT PROFILE

After receiving approval for a Texas Community Development Block Grant (TxCDBG) from the Texas Department of Agriculture in 2021, the Town of Buckholts contracted with MRB Group for engineering design services to replace the existing 4,300 feet of 6-inch wastewater line that roughly parallels west of FM 1915 on the south side of town. The line traverses behind residential houses and across a cultivated field, which increases the possibility of infiltration and inflow due to the remote location and lack of consistent inspection.

MRB is providing replacement evaluation, engineering design, topographic surveying, contract document preparation, bidding, and construction administration.

MRB Group also provided engineering support for the 2018 CDBG application and engineering design services for the work outlined within the application.

CLIENT/LOCATION

Town of Buckholts, Texas

PROJECT STATUS

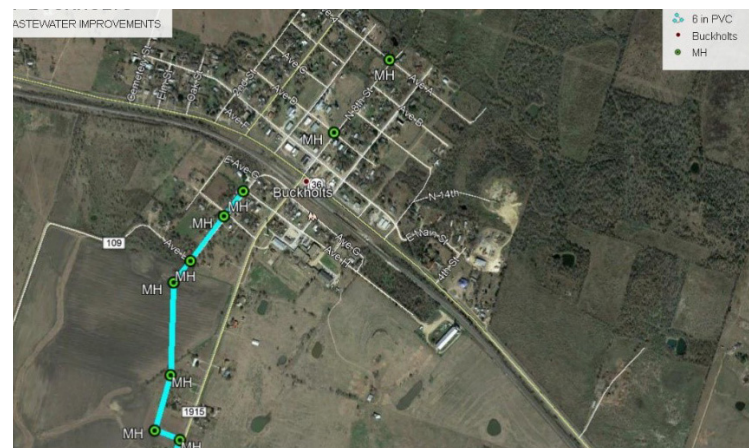
Completed in 2023

PROJECT COST

Est. \$263,500

REFERENCE

The Honorable Terri Eaton,
Mayor
254.593.3111



TXDOT STREETSCAPE IMPROVEMENTS

PROJECT PROFILE

The City of Waco received a TxDOT grant to provide sidewalk, ADA improvements, bike lanes, parking, lighting, and landscape improvements along Elm Ave. (MLK Blvd. to Garrison St.).

The existing sidewalks were not ADA-compliant and many of the existing sidewalks had deteriorated greatly. The project intended to enhance/improve these features, provide a bicycle lane through the corridor, enhance the parking situation and provide much-needed lighting. The project also included landscaping and other pedestrian elements such as gathering areas and park benches.

The MRB Group team led several public meetings to engage the community in the design of these features. MRB Group also had a community liaison on its team to serve as a facilitator between the designers and the community.

Services included providing preliminary and final design services, environmental review, easement document preparation, landscape design, grant administration, and construction administration services.

CLIENT/LOCATION

City of Waco, Texas

PROJECT STATUS

Completed in 2023

PROJECT COST

Est. \$8.06 million

REFERENCE

Steven Martin, P.E.,
Deputy City Engineer
254.750.8044
stevenm@wacotx.gov



NEW FIRE STATION & EMERGENCY OPERATIONS CENTER

PROJECT PROFILE

Members of the MRB Group Architecture team were selected to design a new fire station, training facility, and Emergency Operations Center (EOC) for the City of Temple.

To address substantial population growth, the project was intended to provide another staffed fire station and a second EOC for the City. The EOC is a stand-alone, fully operational emergency response center designed to withstand severe weather and accommodate up to 300 occupants, with additional sleeping quarters, showering facilities, and a full kitchen. The design also focused on preparedness, incorporating a backup generator, stand-alone internet technology infrastructure for security, as well as system redundancy to reduce interruption or failures.

To supplement the original project, the MRB Group team was later selected by the City of Temple to serve as lead designer and project team of record for a new training field and associated buildings.

Utilizing fire-science and training experts, the MRB Group team created a state-of-the-art facility consisting of a four-story training tower, a two-bay station with training space, storage, and restroom facilities.

CLIENT/LOCATION

City of Temple, Texas

PROJECT STATUS

Completed 2011

PROJECT COST

\$3.4 million

REFERENCE

Belinda Mattke,
Director of Purchasing
254.298.5659



SECTION 4

REFERENCES

REFERENCES

MRB Group is exceptionally proud of our relationships with our clients. This exceptional rapport is demonstrated by the fact that many of our clients are repeat customers.

CITY OF MART, TEXAS

Shane James
City Administrator
112 North Commerce Street
Mart, TX 76664
254.876.2462
cityadmin@cityofmart.org

CITY OF BARTLETT, TEXAS

Chad Mees
Mayor
140 W. Clark
Bartlett, TX 76511
254.527.3219
mayormeas@bartlett-tx.us

CITY OF ROSEBUD, TEXAS

Kenny Murray
City Administrator
202 S. College Street
Rosebud, TX 76570
254.583.7926
cityadministrator@rosebudtexas.us

VILLAGE OF SALADO, TEXAS

Manuel De La Rosa
Village Administrator
301 N. Stagecoach Road
Salado, TX 76571
254.947.5060
mdelarosa@saladotx.gov

CITY OF BRUCEVILLE-EDDY, TEXAS

Kent Manton, MPA
City Administrator
144 Wilcox Drive
Eddy, TX 76524
254.859.5964, x100
kmanton@bruceville-eddy.us



APPENDIX

REQUIRED FORMS


Certification Regarding Lobbying

The undersigned certifies, to the best of his or her knowledge and belief, that:

- (a) No Federal appropriated funds have been paid or will be paid, by or on behalf of the undersigned, to any person for influencing or attempting to influence an officer or employee of an agency, a Member of Congress, an officer or employee of Congress, or an employee of a Member of Congress in connection with the awarding of any Federal contract, the making of any Federal grant, the making of any Federal loan, the entering into of any cooperative agreement, and the extension, continuation, renewal, amendment, or modification of any Federal contract, grant, loan, or cooperative agreement.
- (b) If any funds other than Federal appropriated funds have been paid or will be paid to any person for influencing or attempting to influence an officer or employee of any agency, a Member of Congress, an officer or employee of Congress, or an employee of a Member of Congress in connection with this Federal contract, grant, loan, or cooperative agreement, the undersigned shall complete and submit Standard Form-LLL, "Disclosure Form to Report Lobbying," in accordance with its instructions.
- (c) The undersigned shall require that the language paragraph 1 and 2 of this anti-lobbying certification be included in the award documents for all subawards at all tiers (including subcontracts, subgrants, and contracts under grants, loans, and cooperative agreements) and that all subrecipients shall certify and disclose accordingly.

This certification is a material representation of fact upon which reliance was placed when this transaction was made or entered into. Submission of this certification is a prerequisite for making or entering into this transaction imposed by 31, U.S.C. § 1352 (as amended by the Lobbying Disclosure Act of 1995).

The Contractor, MRB Group, P.C., certifies or affirms the truthfulness and accuracy of each statement of its certification and disclosure, if any. In addition, the Contractor understands and agrees that the provisions of 31 U.S.C. § 3801 *et seq.*, apply to this certification and disclosure, if any.


Signature of Contractor's Authorized Official

James J. Oberst, P.E., LEED AP, Executive V.P./C.O.O.
Printed Name and Title of Contractor's Authorized Official

1/20/2025

Date

CONFLICT OF INTEREST QUESTIONNAIRE

FORM CIQ

For vendor doing business with local governmental entity

This questionnaire reflects changes made to the law by H.B. 23, 84th Leg., Regular Session.

This questionnaire is being filed in accordance with Chapter 176, Local Government Code, by a vendor who has a business relationship as defined by Section 176.001(1-a) with a local governmental entity and the vendor meets requirements under Section 176.006(a).

By law this questionnaire must be filed with the records administrator of the local governmental entity not later than the 7th business day after the date the vendor becomes aware of facts that require the statement to be filed. See Section 176.006(a-1), Local Government Code.

A vendor commits an offense if the vendor knowingly violates Section 176.006, Local Government Code. An offense under this section is a misdemeanor.

OFFICE USE ONLY

Date Received

1 Name of vendor who has a business relationship with local governmental entity.

N/A

2 **Check this box if you are filing an update to a previously filed questionnaire.** (The law requires that you file an updated questionnaire with the appropriate filing authority not later than the 7th business day after the date on which you became aware that the originally filed questionnaire was incomplete or inaccurate.)

3 Name of local government officer about whom the information is being disclosed.

N/A

Name of Officer

4 Describe each employment or other business relationship with the local government officer, or a family member of the officer, as described by Section 176.003(a)(2)(A). Also describe any family relationship with the local government officer. Complete subparts A and B for each employment or business relationship described. Attach additional pages to this Form CIQ as necessary.

A. Is the local government officer or a family member of the officer receiving or likely to receive taxable income, other than investment income, from the vendor?

Yes No

B. Is the vendor receiving or likely to receive taxable income, other than investment income, from or at the direction of the local government officer or a family member of the officer AND the taxable income is not received from the local governmental entity?

Yes No

5 Describe each employment or business relationship that the vendor named in Section 1 maintains with a corporation or other business entity with respect to which the local government officer serves as an officer or director, or holds an ownership interest of one percent or more.

6 Check this box if the vendor has given the local government officer or a family member of the officer one or more gifts as described in Section 176.003(a)(2)(B), excluding gifts described in Section 176.003(a-1).

7 Jan J. [Signature]
Signature of vendor doing business with the governmental entity

1/20/2025
Date

CONFLICT OF INTEREST QUESTIONNAIRE
For vendor doing business with local governmental entity

A complete copy of Chapter 176 of the Local Government Code may be found at [http://www.statutes.legis.state.tx.us/ Docs/LG/htm/LG.176.htm](http://www.statutes.legis.state.tx.us/Docs/LG/htm/LG.176.htm). For easy reference, below are some of the sections cited on this form.

Local Government Code § 176.001(1-a): "Business relationship" means a connection between two or more parties based on commercial activity of one of the parties. The term does not include a connection based on:

- (A) a transaction that is subject to rate or fee regulation by a federal, state, or local governmental entity or an agency of a federal, state, or local governmental entity;
- (B) a transaction conducted at a price and subject to terms available to the public; or
- (C) a purchase or lease of goods or services from a person that is chartered by a state or federal agency and that is subject to regular examination by, and reporting to, that agency.

Local Government Code § 176.003(a)(2)(A) and (B):

(a) A local government officer shall file a conflicts disclosure statement with respect to a vendor if:

(2) the vendor:

(A) has an employment or other business relationship with the local government officer or a family member of the officer that results in the officer or family member receiving taxable income, other than investment income, that exceeds \$2,500 during the 12-month period preceding the date that the officer becomes aware that

- (i) a contract between the local governmental entity and vendor has been executed; or
- (ii) the local governmental entity is considering entering into a contract with the vendor;

(B) has given to the local government officer or a family member of the officer one or more gifts that have an aggregate value of more than \$100 in the 12-month period preceding the date the officer becomes aware that:

- (i) a contract between the local governmental entity and vendor has been executed; or
- (ii) the local governmental entity is considering entering into a contract with the vendor.

Local Government Code § 176.006(a) and (a-1)

(a) A vendor shall file a completed conflict of interest questionnaire if the vendor has a business relationship with a local governmental entity and

(1) has an employment or other business relationship with a local government officer of that local governmental entity, or a family member of the officer, described by Section 176.003(a)(2)(A);

(2) has given a local government officer of that local governmental entity, or a family member of the officer, one or more gifts with the aggregate value specified by Section 176.003(a)(2)(B), excluding any gift described by Section 176.003(a-1); or

(3) has a family relationship with a local government officer of that local governmental entity.

(a-1) The completed conflict of interest questionnaire must be filed with the appropriate records administrator not later than the seventh business day after the later of:

(1) the date that the vendor:

- (A) begins discussions or negotiations to enter into a contract with the local governmental entity; or
- (B) submits to the local governmental entity an application, response to a request for proposals or bids, correspondence, or another writing related to a potential contract with the local governmental entity; or



CERTIFICATE OF LIABILITY INSURANCE

DATE (MM/DD/YYYY)

12/27/2024

THIS CERTIFICATE IS ISSUED AS A MATTER OF INFORMATION ONLY AND CONFERS NO RIGHTS UPON THE CERTIFICATE HOLDER. THIS CERTIFICATE DOES NOT AFFIRMATIVELY OR NEGATIVELY AMEND, EXTEND OR ALTER THE COVERAGE AFFORDED BY THE POLICIES BELOW. THIS CERTIFICATE OF INSURANCE DOES NOT CONSTITUTE A CONTRACT BETWEEN THE ISSUING INSURER(S), AUTHORIZED REPRESENTATIVE OR PRODUCER, AND THE CERTIFICATE HOLDER.

IMPORTANT: If the certificate holder is an **ADDITIONAL INSURED**, the policy(ies) must be endorsed. If **SUBROGATION IS WAIVED**, subject to the terms and conditions of the policy, certain policies may require an endorsement. A statement on this certificate does not confer rights to the certificate holder in lieu of such endorsement(s).

PRODUCER Promark Partners Insurance Services 6700 Main St. Williamsville NY 14221	CONTACT NAME: Jennifer Dissette PHONE (A/C, No, Ext): (716)633-8401 FAX (A/C, No): (716)633-8429 E-MAIL ADDRESS: jdissette@promarkinsurance.com																				
	<table border="1"> <tr> <th colspan="2">INSURER(S) AFFORDING COVERAGE</th> <th>NAIC #</th> </tr> <tr> <td>INSURER A: RLI Insurance Company</td> <td></td> <td>13056</td> </tr> <tr> <td>INSURER B: Great American Insurance Group</td> <td></td> <td>16691</td> </tr> <tr> <td>INSURER C:</td> <td></td> <td></td> </tr> <tr> <td>INSURER D:</td> <td></td> <td></td> </tr> <tr> <td>INSURER E:</td> <td></td> <td></td> </tr> <tr> <td>INSURER F:</td> <td></td> <td></td> </tr> </table>	INSURER(S) AFFORDING COVERAGE		NAIC #	INSURER A: RLI Insurance Company		13056	INSURER B: Great American Insurance Group		16691	INSURER C:			INSURER D:			INSURER E:			INSURER F:	
INSURER(S) AFFORDING COVERAGE		NAIC #																			
INSURER A: RLI Insurance Company		13056																			
INSURER B: Great American Insurance Group		16691																			
INSURER C:																					
INSURER D:																					
INSURER E:																					
INSURER F:																					
INSURED MRB Group Engineering, Architecture, & Surveying, DPC MRB Group 145 Culver Road, Suite 160 Rochester NY 14620																					

COVERAGES

CERTIFICATE NUMBER: CL24122722330

REVISION NUMBER:

THIS IS TO CERTIFY THAT THE POLICIES OF INSURANCE LISTED BELOW HAVE BEEN ISSUED TO THE INSURED NAMED ABOVE FOR THE POLICY PERIOD INDICATED. NOTWITHSTANDING ANY REQUIREMENT, TERM OR CONDITION OF ANY CONTRACT OR OTHER DOCUMENT WITH RESPECT TO WHICH THIS CERTIFICATE MAY BE ISSUED OR MAY PERTAIN, THE INSURANCE AFFORDED BY THE POLICIES DESCRIBED HEREIN IS SUBJECT TO ALL THE TERMS, EXCLUSIONS AND CONDITIONS OF SUCH POLICIES. LIMITS SHOWN MAY HAVE BEEN REDUCED BY PAID CLAIMS.

INSR LTR	TYPE OF INSURANCE	ADDL INSD	SUBR WVD	POLICY NUMBER	POLICY EFF (MM/DD/YYYY)	POLICY EXP (MM/DD/YYYY)	LIMITS	
A	<input checked="" type="checkbox"/> COMMERCIAL GENERAL LIABILITY <input type="checkbox"/> CLAIMS-MADE <input checked="" type="checkbox"/> OCCUR <input checked="" type="checkbox"/> Incl Contractual Liability GEN'L AGGREGATE LIMIT APPLIES PER: <input type="checkbox"/> POLICY <input checked="" type="checkbox"/> PRO-JECT <input type="checkbox"/> LOC <input type="checkbox"/> OTHER:			PSB0003207	12/31/2024	12/31/2025	EACH OCCURRENCE	\$ 1,000,000
							DAMAGE TO RENTED PREMISES (Ea occurrence)	\$ 1,000,000
							MED EXP (Any one person)	\$ 10,000
							PERSONAL & ADV INJURY	\$ 1,000,000
							GENERAL AGGREGATE	\$ 2,000,000
							PRODUCTS - COMP/OP AGG	\$ 2,000,000
								\$
A	AUTOMOBILE LIABILITY <input checked="" type="checkbox"/> ANY AUTO <input type="checkbox"/> ALL OWNED AUTOS <input checked="" type="checkbox"/> HIRED AUTOS <input type="checkbox"/> SCHEDULED AUTOS <input checked="" type="checkbox"/> NON-OWNED AUTOS			PSA0001996	12/31/2024	12/31/2025	COMBINED SINGLE LIMIT (Ea accident)	\$ 1,000,000
							BODILY INJURY (Per person)	\$
							BODILY INJURY (Per accident)	\$
							PROPERTY DAMAGE (Per accident)	\$
								\$
A	<input type="checkbox"/> UMBRELLA LIAB <input checked="" type="checkbox"/> EXCESS LIAB <input type="checkbox"/> DED <input type="checkbox"/> RETENTION \$			PSE0003023	12/31/2024	12/31/2025	EACH OCCURRENCE	\$ 5,000,000
							AGGREGATE	\$ 5,000,000
								\$
A	WORKERS COMPENSATION AND EMPLOYERS' LIABILITY ANY PROPRIETOR/PARTNER/EXECUTIVE OFFICER/MEMBER EXCLUDED? (Mandatory in NH) If yes, describe under DESCRIPTION OF OPERATIONS below	Y/N	N/A	PSW0001923	12/31/2024	12/31/2025	<input checked="" type="checkbox"/> PER STATUTE <input type="checkbox"/> OTH-ER	
							E.L. EACH ACCIDENT	\$ 1,000,000
							E.L. DISEASE - EA EMPLOYEE	\$ 1,000,000
							E.L. DISEASE - POLICY LIMIT	\$ 1,000,000
B	Professional Liability includes Pollution Liability			DPPE439021	12/31/2024	12/31/2025	Per Claim	5,000,000
							Aggregate	5,000,000

DESCRIPTION OF OPERATIONS / LOCATIONS / VEHICLES (ACORD 101, Additional Remarks Schedule, may be attached if more space is required)

Professional Liability limits shown are per claim and aggregate for all projects of the named insured.

CERTIFICATE HOLDER

Marcie.Ghysel@mrbgroup.com>

Proposal Use Only

CANCELLATION

SHOULD ANY OF THE ABOVE DESCRIBED POLICIES BE CANCELLED BEFORE THE EXPIRATION DATE THEREOF, NOTICE WILL BE DELIVERED IN ACCORDANCE WITH THE POLICY PROVISIONS.

AUTHORIZED REPRESENTATIVE

C Alderson/SALDER

© 1988-2014 ACORD CORPORATION. All rights reserved.

THANK YOU



303 W. Calhoun Ave.
Temple, Texas 76501
254.771.2054
MRBGroup.com