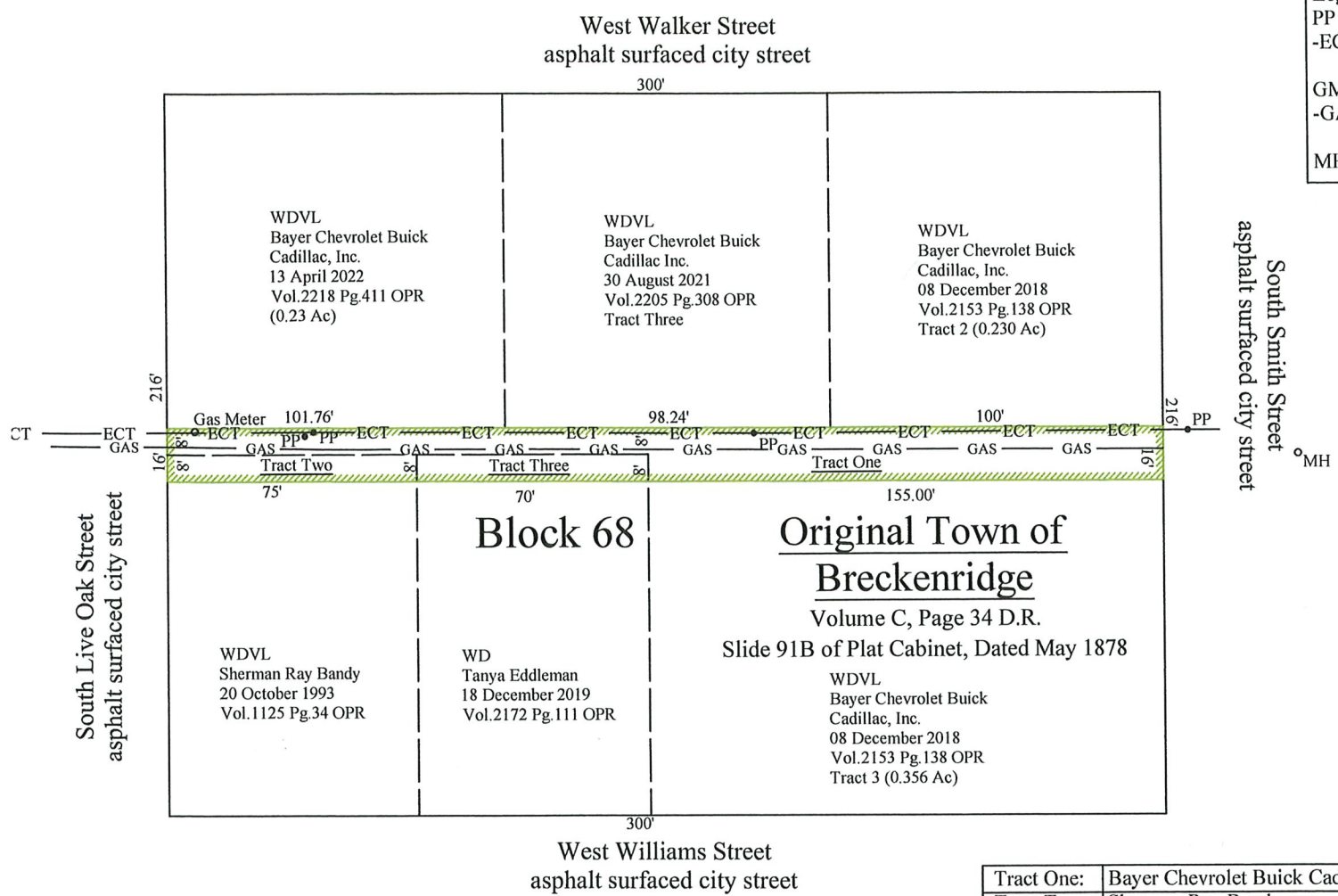


**Legend**  
 PP = Power Pole  
 -ECT- = Overhead Electric, Cable, Telephone  
 GM = Gas Meter  
 -GAS- = Approximate location of gas pipeline  
 MH = Man Hole



Tract One:	Bayer Chevrolet Buick Cadillac, Inc.	0.08 Acres or 3636 Sq. Feet
Tract Two:	Sherman Ray Bandy	0.014 Acres or 600 Sq. Feet
Tract Three:	Tanya Eddleman	0.013 acres or 560 Sq. Feet

**Exhibit "A"**  
 Closure of 16' alley in Block 68 of the  
 Original Town Plat of the  
 City of Breckenridge, County of Stephens,  
 State of Texas

**OWEN SURVEYING CO.**  
 FIRM #10069000 WWW.OWENSURVEYING.COM  
 110 W. ELLIOTT ST., BRECKENRIDGE, TX 76424  
 PHONE (254)559-9898 FAX (254)559-7372 CELL (254)559-0127

---

ORDINANCE EXHIBIT : STEPHENS COUNTY  
 DRAWN BY: CH CHECKED BY: EB

---

Scale 1" = 50'	Date 03 November 2023	Print Number B-478B
-------------------	--------------------------	------------------------