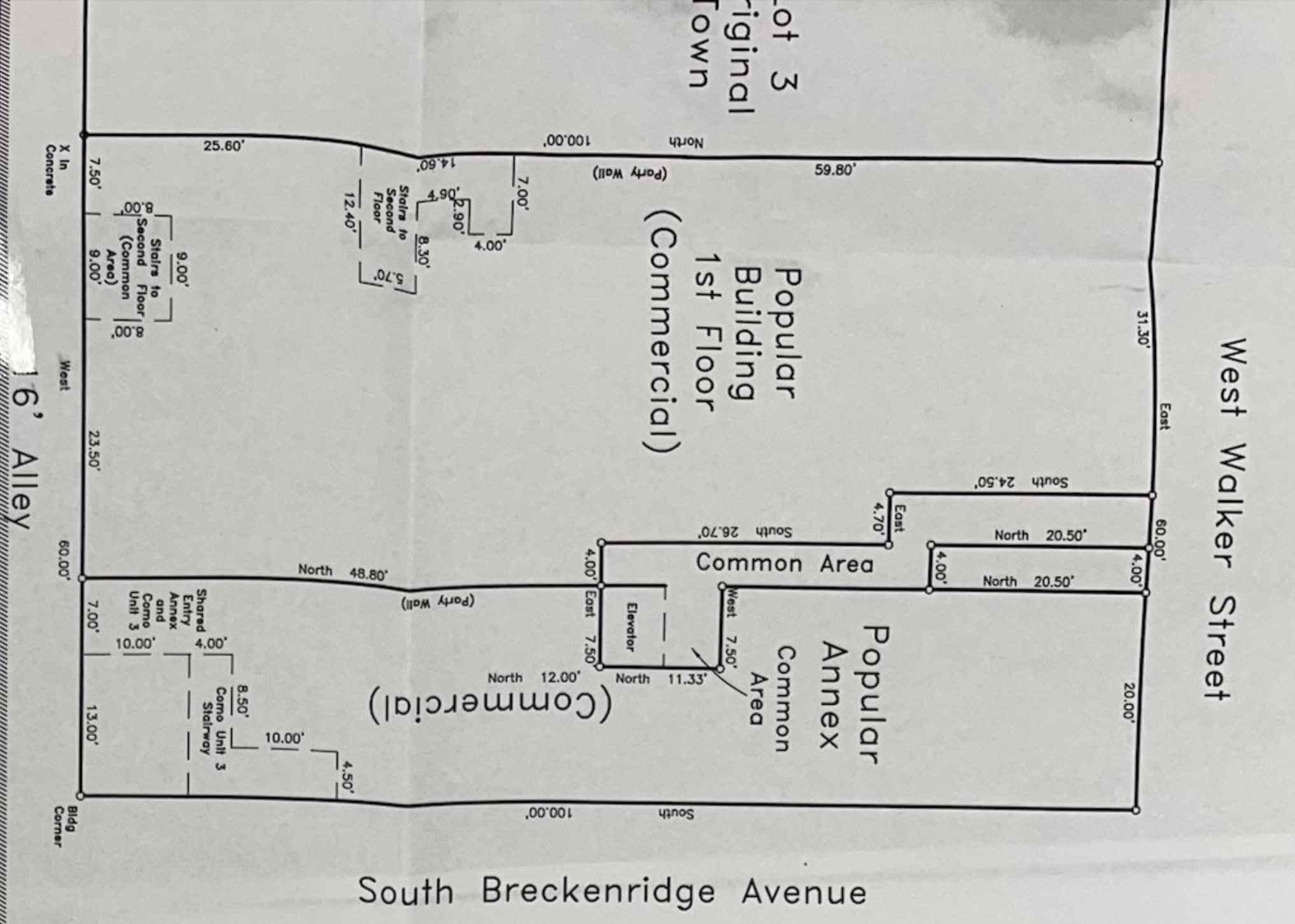
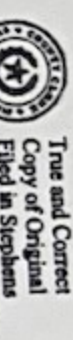
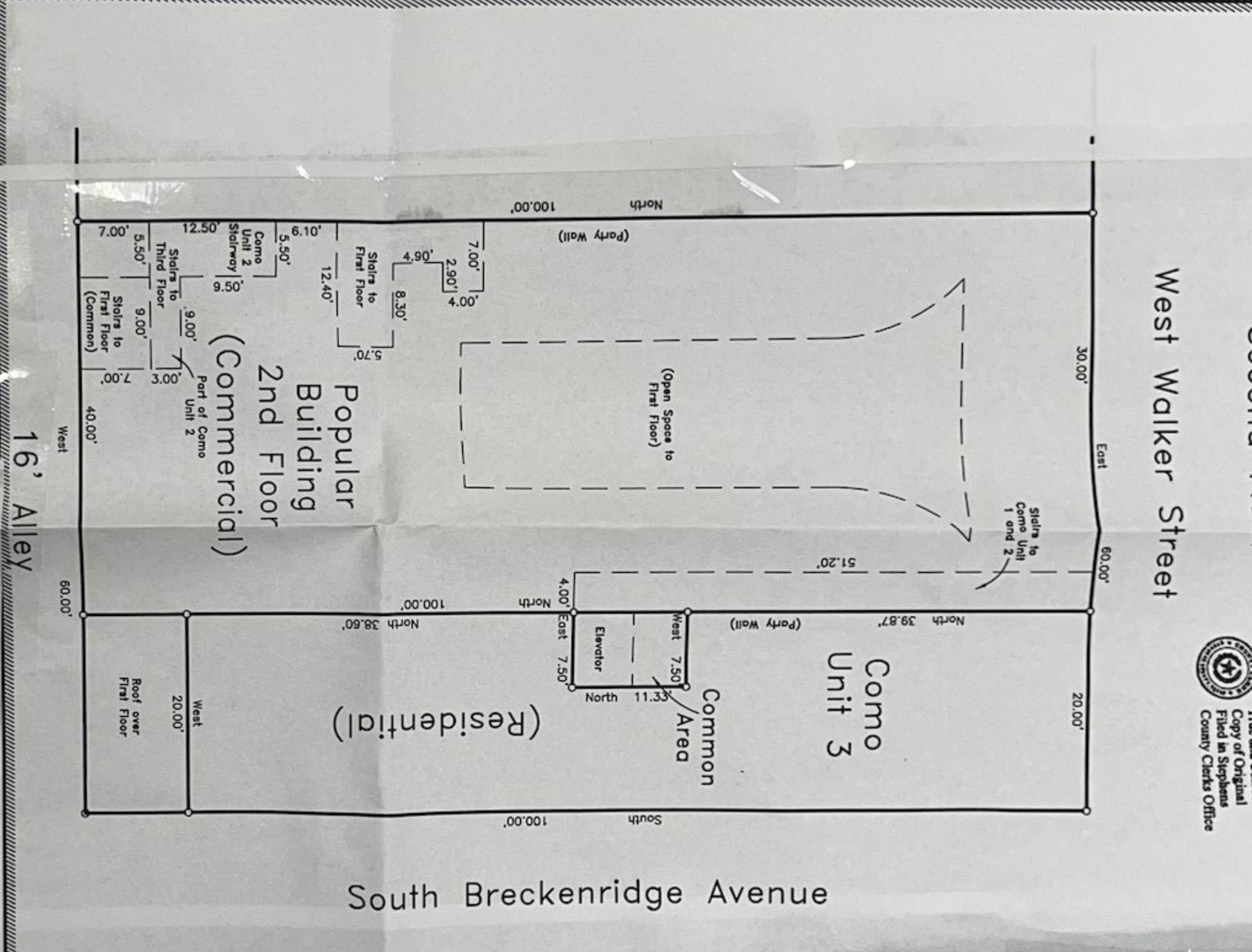


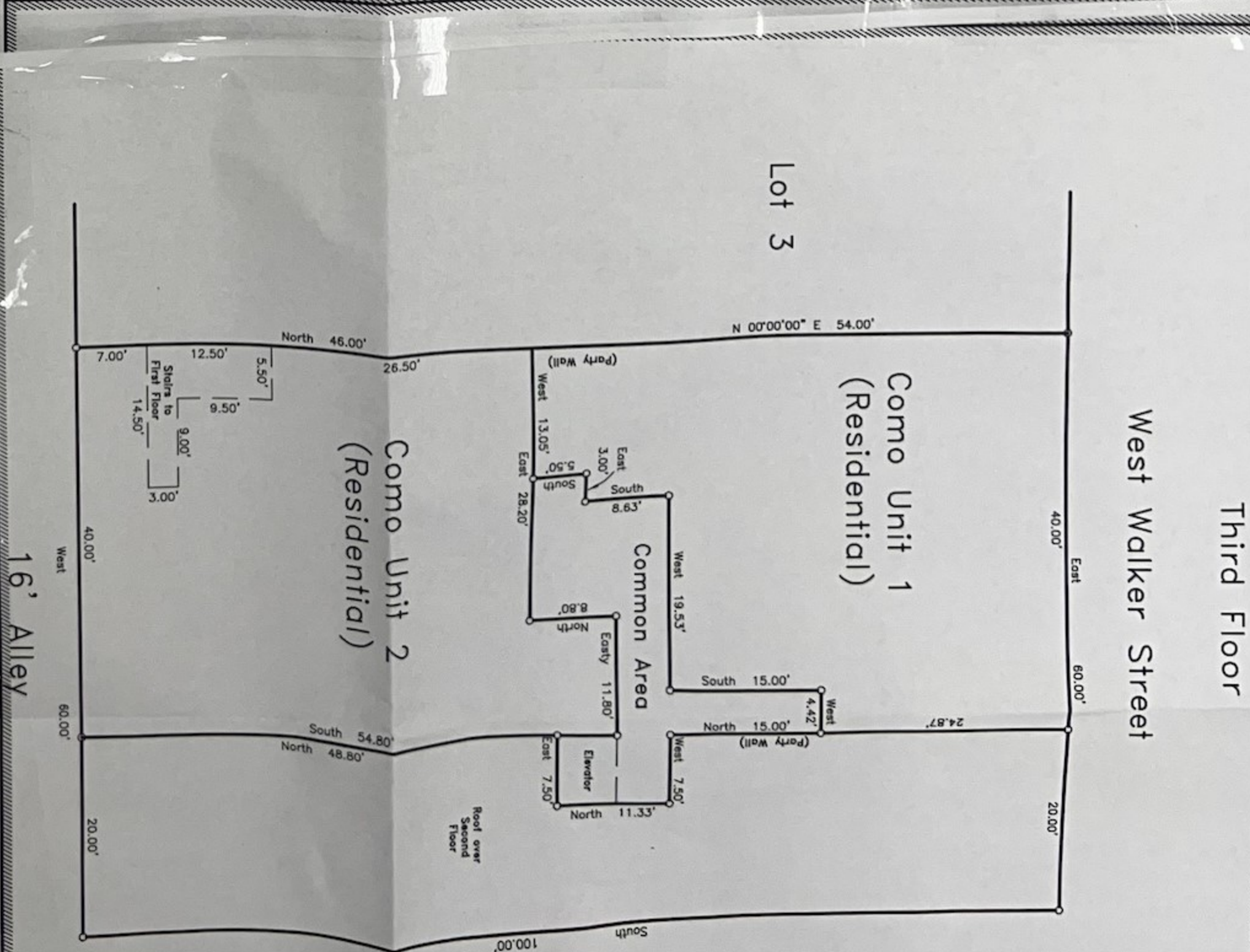
First Floor



Second Floor



Third Floor



Plat showing The Popular Buildings, being a replat of Lots 1 and 2, Block 16, Original Town of Breckenridge, Stephens County, Texas, as shown on the plat recorded in Cabinet 1, Slide 91-A, Plat Records, Stephens County, Texas

I, Jackie Ensey, County Clerk, Stephens County, Texas, in and for said county do hereby certify that the foregoing plat with its certificate of authentication, was filed for record in my office the 15th day of August, 2015 at 10:05 o'clock AM, and duly recorded the 15th day of August, 2015.

CITY COMMISSION APPROVAL
 CITY OF BRECKENRIDGE: Approved and accepted for around usage, street design, utility easement and physical layout. This the 1st day of April, 2015.
 City of Breckenridge



I hereby certify that this survey was made on the ground and that this plat correctly represents the facts found on the site at the survey.



SURVEY PLAT
 STEPHENS COUNTY
 TEXAS
 HEATLEY SURVEY
 P.O. BOX 1
 BRECKENRIDGE, TX
 (254) 559-8
 Print Number: S

STATE OF TEXAS - COUNTY OF STEPHENS
 CERTIFIED TRUE AND CORRECT COPY
 This is a true and correct copy of the original as shown on the original as of the date of this recording.



Attest: *Jackie Ensey*
 Jackie Ensey, County Clerk
 Stephens County, Texas

Attest: *Jimmy McKay*
 Mayor: Jimmy McKay