

**RESOLUTION NUMBER 24 - 25**

**A RESOLUTION OF THE CITY COUNCIL OF BONIFAY, FLORIDA TO APPROVE A TEMPORARY ROAD CLOSURE PURSUANT TO COMPLETION OF THE RESURFACING, RESTORATION AND REHABILITATION PROJECT OF STATE ROAD (SR) 10 (US 90) FROM EAST OF BANFILL AVENUE TO EAST OF HUBBARD STREET. - (FPID NUMBER 436269-2-52-01)**

**WHEREAS**, in Fiscal Year 2025, the Florida Department of Transportation (hereinafter referred to as the “Department”) proposes to undertake and complete a resurfacing, restoration, and rehabilitation project on State Road (SR) 10 (US 90) in Holmes County, Florida, FPID Number 436269-2-52-01 (hereinafter referred to as the “Project”); and

**WHEREAS**, the City Council of Bonifay, Florida, supports the Department’s efforts in these regards; and

**WHEREAS**, it is necessary to temporarily close McGee Rd. and Armstrong Rd., as depicted in **Exhibit A**, to successfully complete the Project; and

**WHEREAS**, said road closure will reduce construction time and costs, minimize impacts to the traveling public, and minimize construction easements; and

**WHEREAS**, said road closure will be performed in accordance with the Department’s Temporary Traffic Control Plan, attached hereto and incorporated herein as **Exhibit A**, including any updates and/or revisions thereof as exist on file with the Department for this Project (the “Plans”).

**NOW, THEREFORE, BE IT RESOLVED**, BY THE BONIFAY CITY COUNCIL that:

1. The above stated recitals in the Whereas clauses are true and correct and incorporated herein by reference.
2. The City Council does hereby authorize the Department to temporarily close McGee Rd. and Armstrong Rd. in accordance with the Plans.
3. The City Council hereby confirm that the City will continue to maintain City owned detour roads during construction of the Project.
4. This Resolution shall be effective immediately upon adoption by the Board of County Council. A certified copy of this Resolution shall be forwarded to the Florida Department of Transportation at 1074 Highway 90, Chipley, Florida 32428.

ADOPTED this 17th day of June, 2024.

CITY COUNCIL  
BONIFAY, FLORIDA

\_\_\_\_\_  
Mayor

ATTEST: City Clerk

By: \_\_\_\_\_

3/28/2024 9:18:48 AM rd352sc  
C:\projects\FDOT\43626925201\Roadway\TCDTRD01.dgn

MAINTENANCE OF TRAFFIC - GENERAL NOTES

1. WORK RESTRICTIONS:

ALL LANES MUST BE REOPENED TO NORMAL TRAFFIC WITHIN 12 HOURS OF AN EVACUATION NOTICE FOR A HURRICANE OR ANY OTHER EMERGENCY EVENT AND SHALL REMAIN OPEN FOR THE DURATION OF THE EVENT AS DIRECTED BY THE ENGINEER.

2. LANE CLOSURE RESTRICTIONS:

LANE CLOSURES ARE PROHIBITED FROM 6:00 A.M. TO 6:00 P.M. WITHIN 300 FEET OF THE US 90/SR 79 INTERSECTION.

NO LANE CLOSURES FROM 6:30 A.M. TO 8:30 A.M. AND FROM 2:00 P.M. TO 4:00 P.M..

3. USE PORTABLE CHANGEABLE MESSAGE SIGNS AT BEGIN AND END PROJECT 500' BEFORE ADVANCE WARNING SIGNAGE (SR 10/US 90) 7 DAYS PRIOR TO CONSTRUCTION WITH THE FOLLOWING MESSAGE:

US 90 ROAD WORK	BEGIN MM/DD
-----------------------	----------------

MESSAGE MAY BE CHANGED AS DIRECTED BY THE ENGINEER

4. USE PORTABLE CHANGEABLE MESSAGE SIGNS AT BEGIN AND END PROJECT 500' BEFORE ADVANCE WARNING SIGNAGE (SR 10/US 90) FOR PROJECT DURATION:

LANE CLOSURE AHEAD	EXPECT DELAYS
--------------------------	------------------

5. USE PORTABLE CHANGEABLE MESSAGE SIGNS DURING DETOURS AT MCGEE RD AND ARMSTRONG ST WITH THE FOLLOWING MESSAGE:

MCGEE ROAD CLOSED	BEGIN MM/DD	ARMSTRONG STREET CLOSED	BEGIN MM/DD
-------------------------	----------------	-------------------------------	----------------

6. TEMPORARY REGULATORY SPEED FOR ACTIVE WORK ZONES SHALL MATCH CURRENT POSTED SPEEDS.

7. EXISTING POSTED SPEED ZONES ARE LISTED BELOW.

EXISTING POSTED SPEED LIMIT	
BEGIN PROJECT TO STA. 378+05.00	55 MPH
STA. 378+05.00 TO END OF PROJECT	45 MPH

RECOMMENDED CONSTRUCTION ACTIVITIES PHASING

PHASE I - USE STANDARD INDEXES 102-600, 102-601, 102-602, 102-603 AND TEMPORARY TRAFFIC CONTROL DETAIL SHEETS

- A. INSTALL ADVANCE WARNING SIGNAGE
- B. INSTALL EROSION CONTROL
- C. INSTALL DRAINAGE IMPROVEMENTS
  - 1. CLOSE MCGEE RD FOR SIDE DRAIN REPLACEMENT. SIDE DRAIN REPLACEMENT AT MCGEE RD TO RUN IN A CONTINUOUS 24-HOUR OPERATION UNTIL ABLE TO REOPEN MCGEE RD
  - 2. CONSTRUCT DRAINAGE IMPROVEMENTS ALONG US 90 IN BETWEEN MCGEE RD AND ARMSTRONG ST
  - 3. CLOSE ARMSTRONG ST FOR SIDE DRAIN REPLACEMENT. SIDE DRAIN REPLACEMENT AT ARMSTRONG ST TO RUN IN A CONTINUOUS 24-HOUR OPERATION UNTIL ABLE TO REOPEN ARMSTRONG ST

PHASE II - USE STANDARD INDEXES 102-600, 102-601, 102-602, 102-603, 102-613, 102-615, 102-628 AND 102-660

- A. MILL AND RESURFACE ROADWAY INCLUDING CROSS SLOPE CORRECTION.
- B. INSTALL LOOP ASSEMBLIES INTO FINAL PAVEMENT SURFACE.
- C. PLACE FINAL PAVEMENT MARKINGS AND RPMs.
- D. PLACE THERMOPLASTIC PAVEMENT MARKINGS AFTER CURE PERIOD.
- E. CLEAN UP SITE. REMOVE ALL CONSTRUCTION RELATED SIGNAGE AND EROSION CONTROL DEVICES.


REVISIONS				ENGINEER OF RECORD	STATE OF FLORIDA DEPARTMENT OF TRANSPORTATION			TEMPORARY TRAFFIC CONTROL PLAN	SHEET NO.
DATE	DESCRIPTION	DATE	DESCRIPTION	MADISON W. HARRELL, P.E. LICENSE NUMBER: 91482 FDOT DISTRICT 3 1074 HIGHWAY 90 CHIPLEY, FLORIDA 32428	ROAD NO.	COUNTY	FINANCIAL PROJECT ID		26
					SR 10	HOLMES	436269-2-52-01		

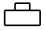
MADISON W. HARRELL, P.E.  
LICENSE NUMBER: 91482  
FDOT DISTRICT 3  
1074 HIGHWAY 90  
CHIPLEY, FLORIDA 32428

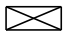
THE OFFICIAL RECORD OF THIS SHEET IS THE ELECTRONIC FILE DIGITALLY SIGNED AND SEALED UNDER RULE 61G15-23.004, F.A.C.

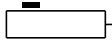
3/28/2024 9:18:52 AM rd352sc  
C:\Projects\FDOT\436269\25201\Roadway\TCPLRD01.dgn


LEGEND

- 

CLOSED WORK AREA
- 

WORK ZONE SIGN
- 

TYPE III BARRICADE
- 

PORTABLE CHANGEABLE MESSAGE SIGN
- 

CHANNELIZING DEVICE (SEE INDEX 600)

DETOUR PCMS MESSAGES

14 DAYS PRIOR TO  
BEGIN DETOUR

DETOUR  
FOR  
MCGEE RD.

BEGINS  
MMM-DD

DURING DETOUR

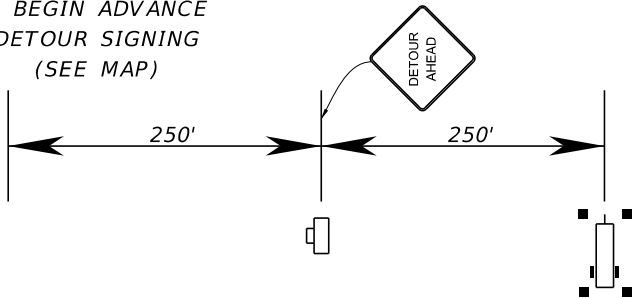
MCGEE RD.  
CLOSED

FOLLOW  
DETOUR

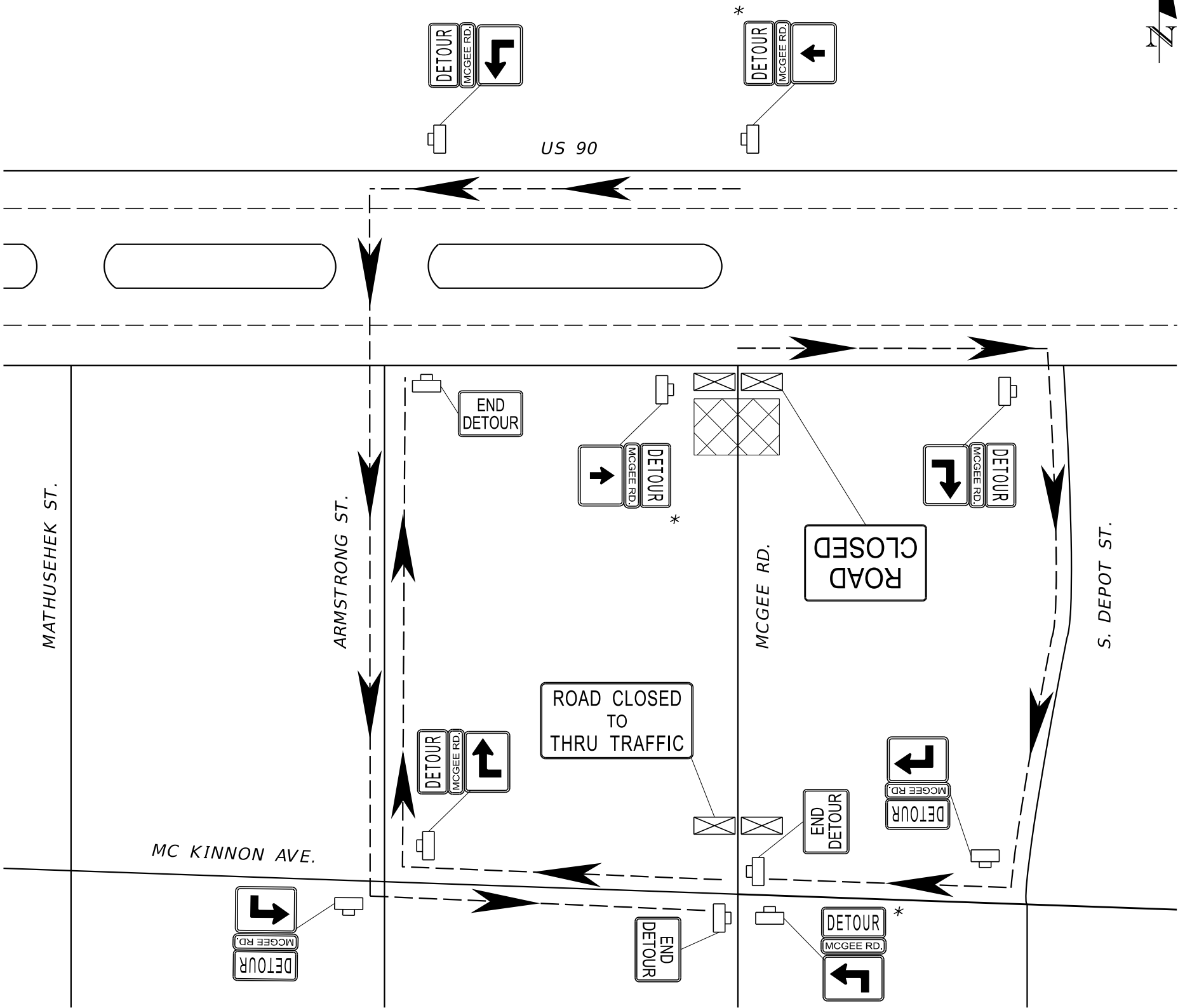
ADVANCE DETOUR SIGNING DETAIL

N.T.S.

\* = BEGIN ADVANCE  
DETOUR SIGNING  
(SEE MAP)



MCGEE ROAD DETOUR - PHASE 1C



REVISIONS			
DATE	DESCRIPTION	DATE	DESCRIPTION

ENGINEER OF RECORD
MADISON W. HARRELL, P.E. LICENSE NUMBER: 91482 FDOT DISTRICT 3 1074 HIGHWAY 90 CHIPLEY, FLORIDA 32428




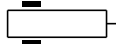

STATE OF FLORIDA DEPARTMENT OF TRANSPORTATION		
ROAD NO.	COUNTY	FINANCIAL PROJECT ID
SR 10	HOLMES	436269-2-52-01

TEMPORARY TRAFFIC CONTROL PLAN DETAIL

SHEET NO.
28

3/28/2024 9:18:55 AM rd352sc  
C:\Projects\FDOT\436269\2501\Roadway\TCPLRD02.dgn

LEGEND

- CLOSED WORK AREA
- WORK ZONE SIGN
- TYPE III BARRICADE
- PORTABLE CHANGEABLE MESSAGE SIGN
- CHANNELIZING DEVICE (SEE INDEX 600)

DETOUR PCMS MESSAGES

- 14 DAYS PRIOR TO  
BEGIN DETOUR

DETOUR  
FOR  
ARMSTRONG ST.

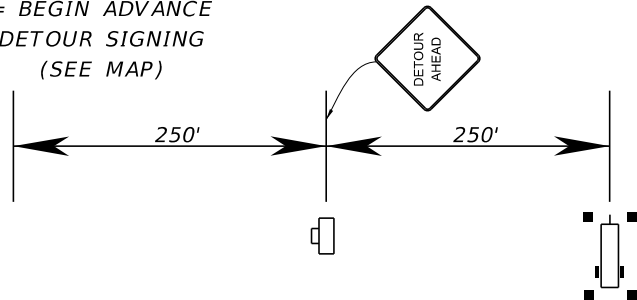
BEGINS  
MMM-DD
- DURING DETOUR

ARMSTRONG ST.  
CLOSED

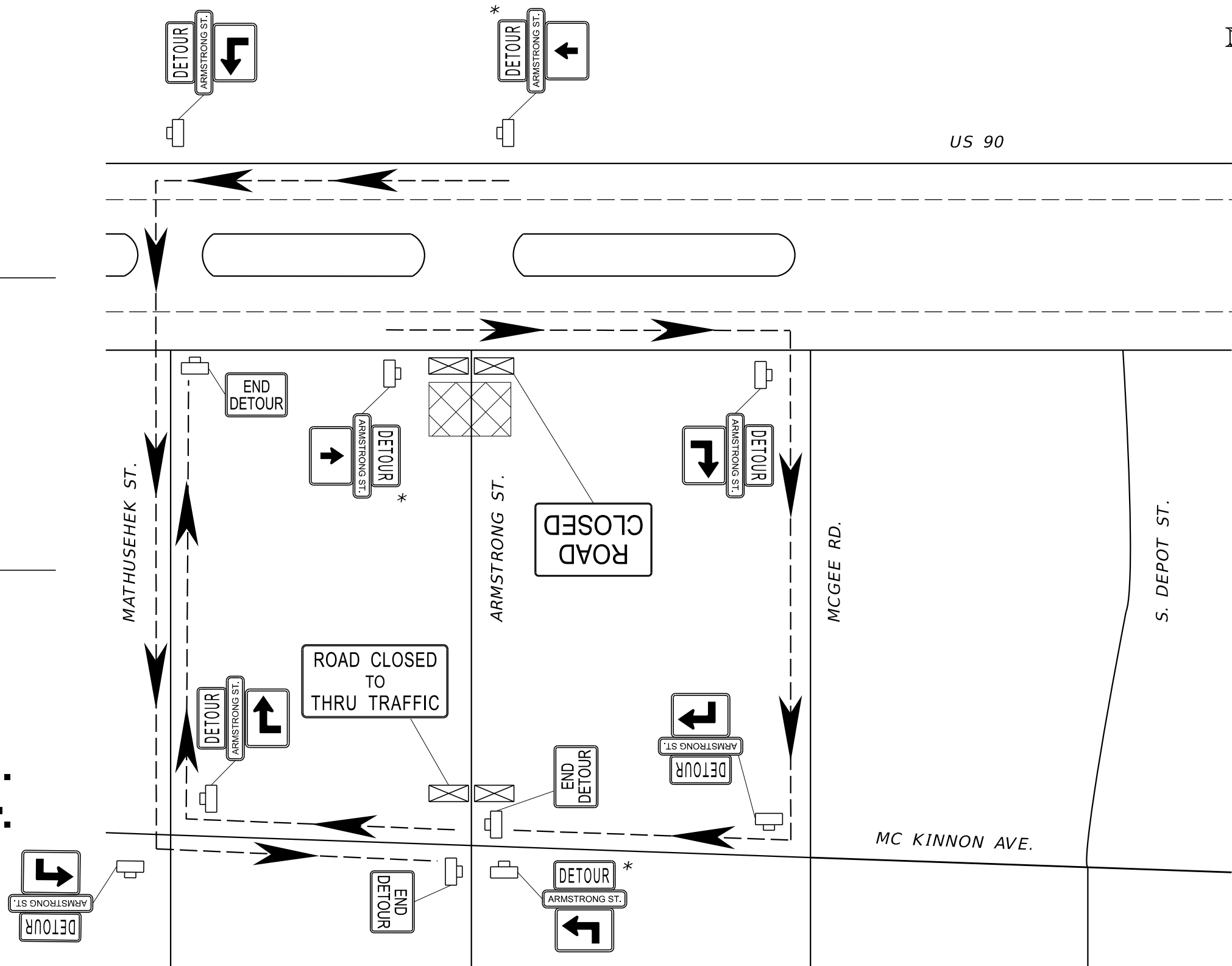
FOLLOW  
DETOUR

ADVANCE DETOUR SIGNING DETAIL  
N.T.S.

\* = BEGIN ADVANCE  
DETOUR SIGNING  
(SEE MAP)



ARMSTRONG STREET DETOUR - PHASE 1C



REVISIONS				ENGINEER OF RECORD	STATE OF FLORIDA DEPARTMENT OF TRANSPORTATION			TEMPORARY TRAFFIC CONTROL PLAN DETAIL	SHEET NO.
DATE	DESCRIPTION	DATE	DESCRIPTION	ROAD NO.					COUNTY
				MADISON W. HARRELL, P.E. LICENSE NUMBER: 91482 FDOT DISTRICT 3 1074 HIGHWAY 90 CHIPLEY, FLORIDA 32428	SR 10	HOLMES	436269-2-52-01		29

MADISON W. HARRELL, P.E.  
LICENSE NUMBER: 91482  
FDOT DISTRICT 3  
1074 HIGHWAY 90  
CHIPLEY, FLORIDA 32428