

Water System Master Plan Update City Council Presentation

Mike Lees, P.E.



May 5, 2026

System Overview

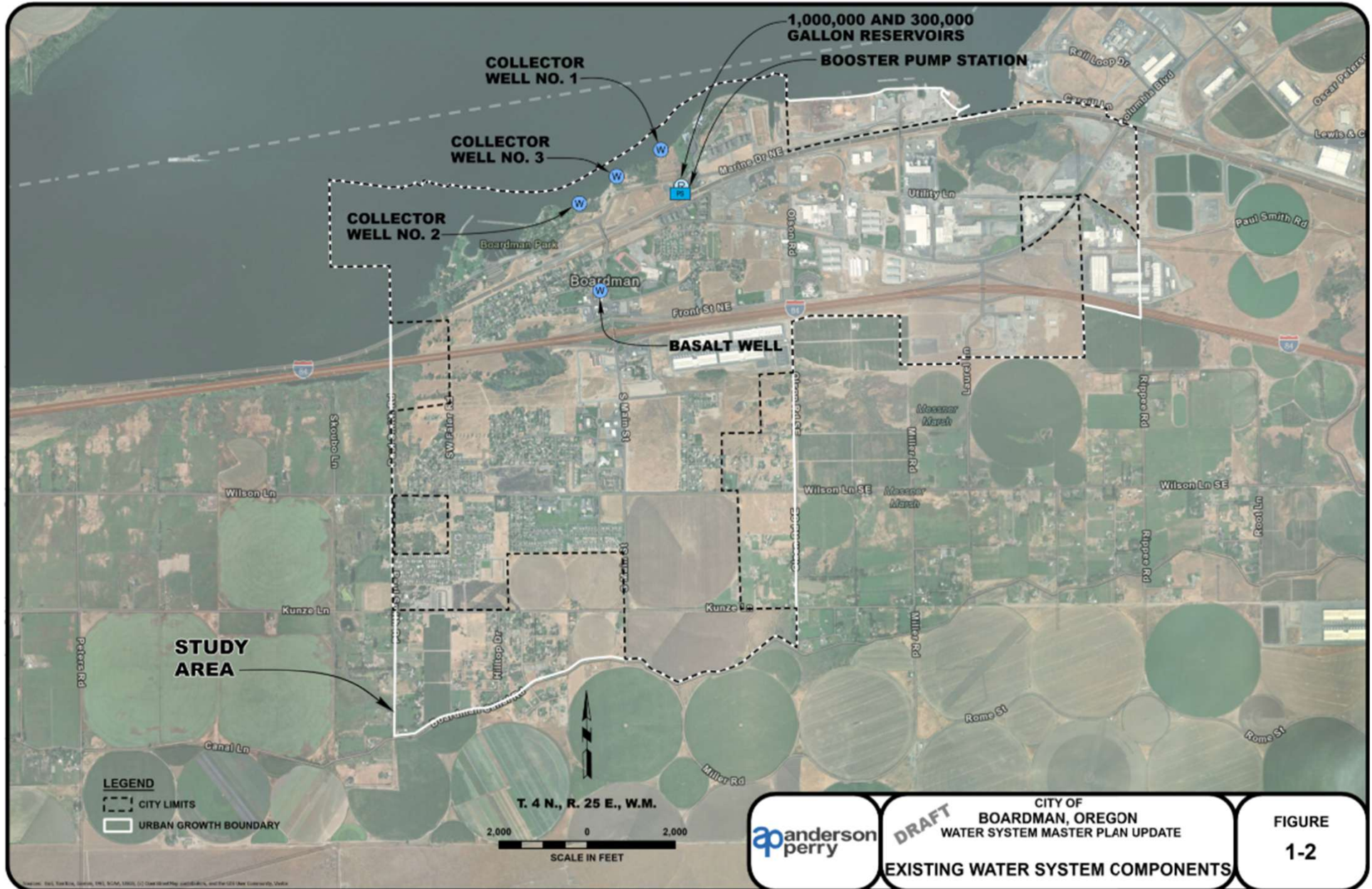
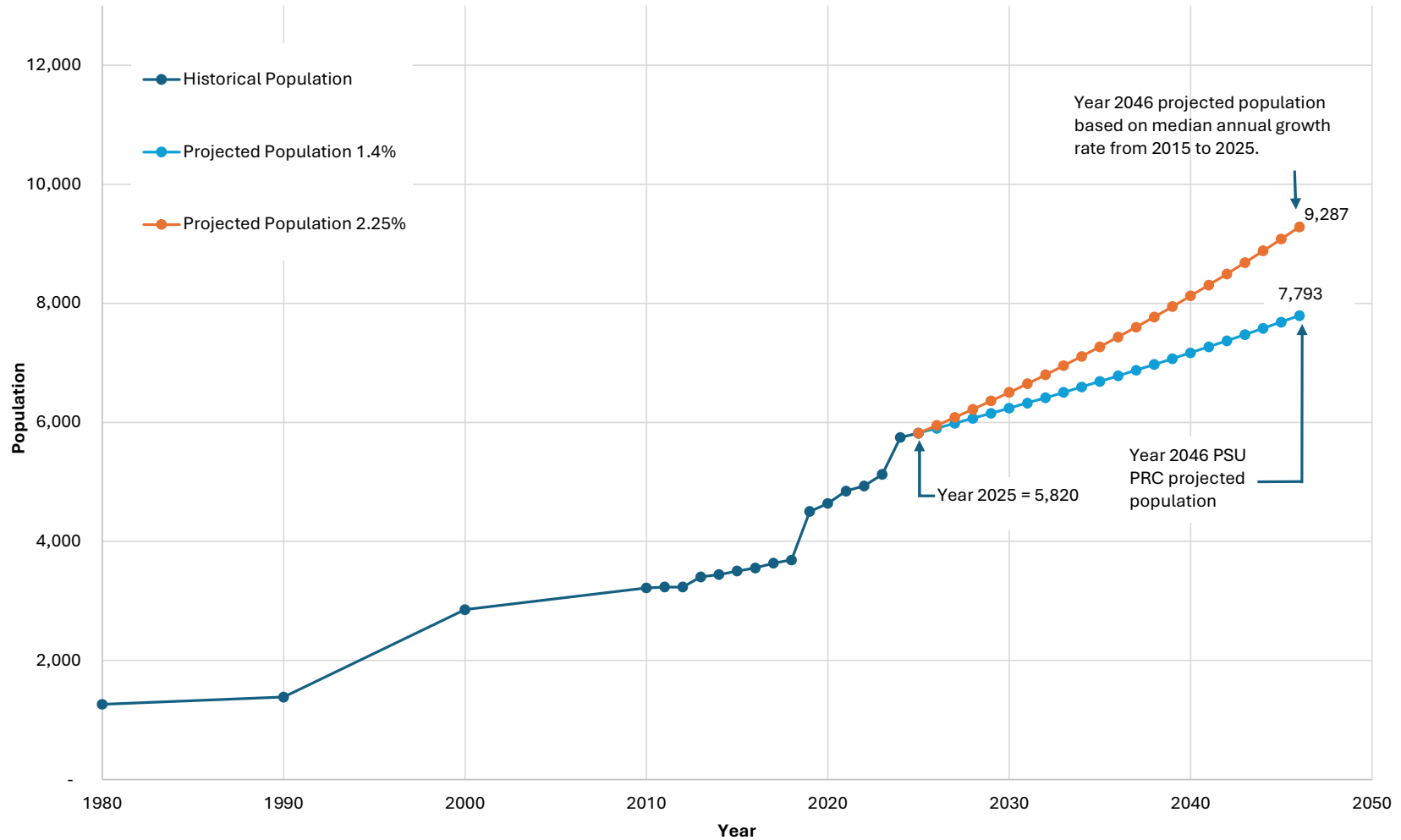


Figure 2-1 Existing Water System Components

Population Projections

CHART 2-1
HISTORICAL AND PROJECTED POPULATION



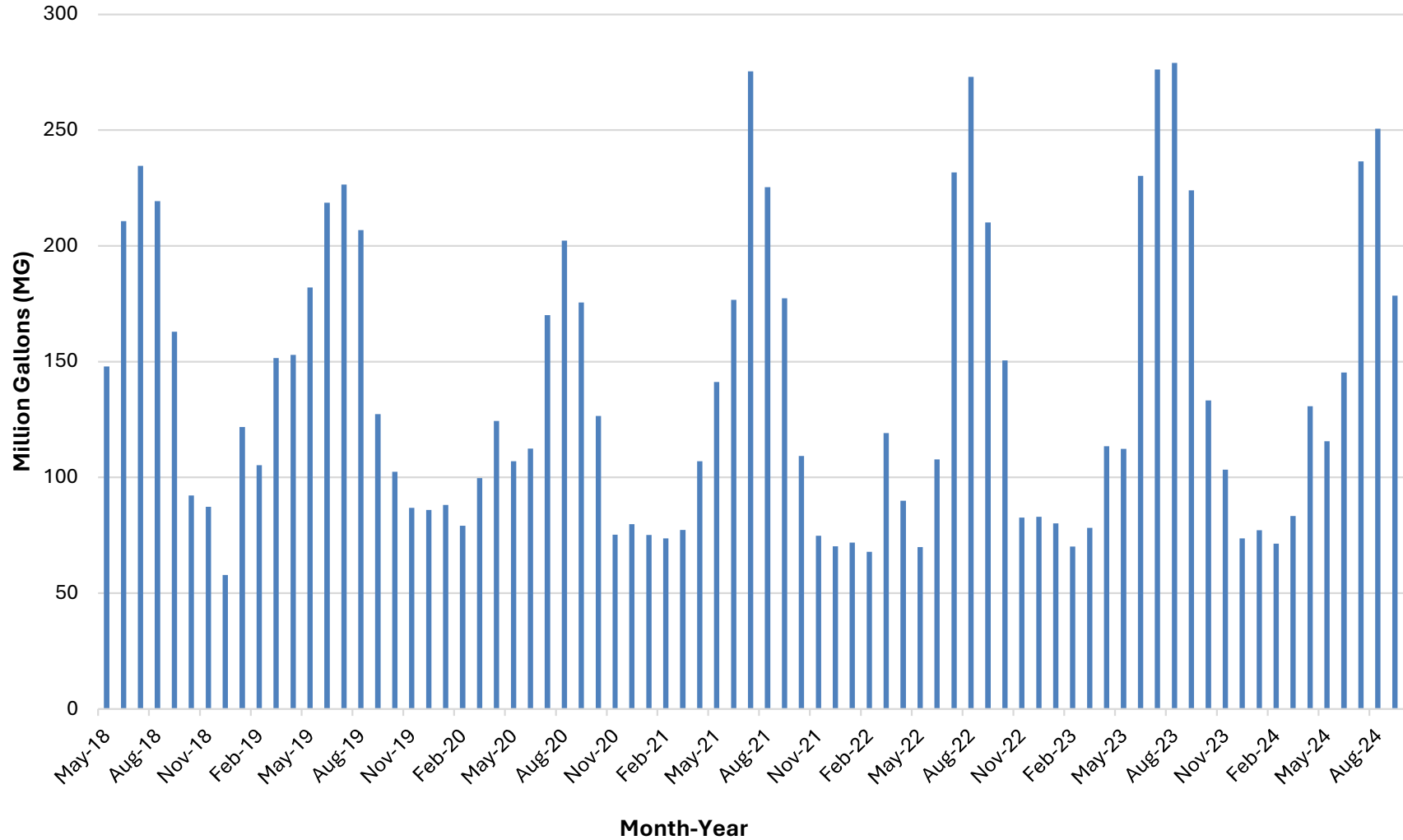
**CITY OF BOARDMAN, OREGON
WATER SYSTEM MASTER PLAN
DESIGN CRITERIA**

| | Year 2025 | Year 2046 |
|--|------------|------------|
| Design Population ^{1,2} | 5,820 | 9,287 |
| Supply | | |
| Average City Daily Demand (gpcd) | 320 | 320 |
| Average City Daily Flow (gpd) | 1,862,000 | 2,972,000 |
| Average City Daily Flow (gpm) | 1,300 | 2,100 |
| Average Port of Morrow Flow ³ (gpd) | 2,906,000 | 2,906,000 |
| Average Port of Morrow Flow (gpm) | 2,000 | 2,000 |
| Average Industrial Flow ⁴ (gpd) | 83,000 | 249,000 |
| Average Industrial Flow (gpm) | 60 | 180 |
| Total Average Daily Flow (gpd) | 4,851,000 | 6,127,000 |
| Total Average Daily Flow (gpm) | 3,400 | 4,300 |
| Peak City Demand ^{5,6} (gpcd) | 1,100 | 1,100 |
| Peak City Flow (gpd) | 6,402,000 | 10,216,000 |
| Peak City Flow (gpm) | 4,400 | 7,100 |
| Peak Port of Morrow Flow ⁶ (gpd) | 6,029,000 | 6,029,000 |
| Peak Port of Morrow Flow (gpm) | 4,200 | 4,200 |
| Peak Industrial Flow ⁶ (gpd) | 1,008,000 | 3,024,000 |
| Peak Industrial Flow ⁷ (gpm) | 1,400 | 4,200 |
| Total Peak Daily Flow (gpd) | 13,439,000 | 19,269,000 |
| Total Peak Daily Flow (gpm) | 10,000 | 15,500 |

Figure 2-3 Design Criteria

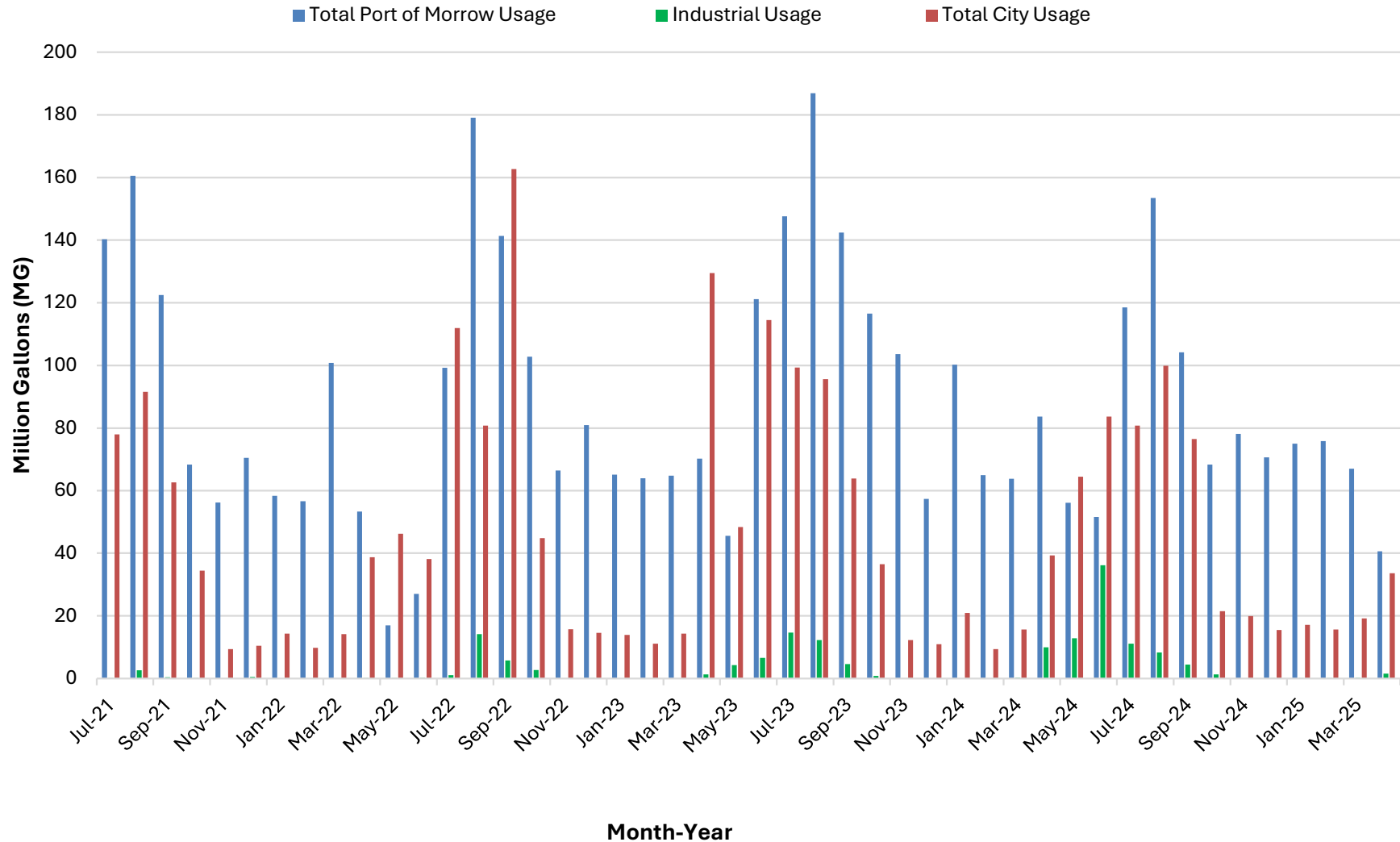
Water Supply

CHART 2-4
COMBINED WATER PRODUCTION



Water Consumption Comparison

Chart 2-7
Water Consumption Comparison



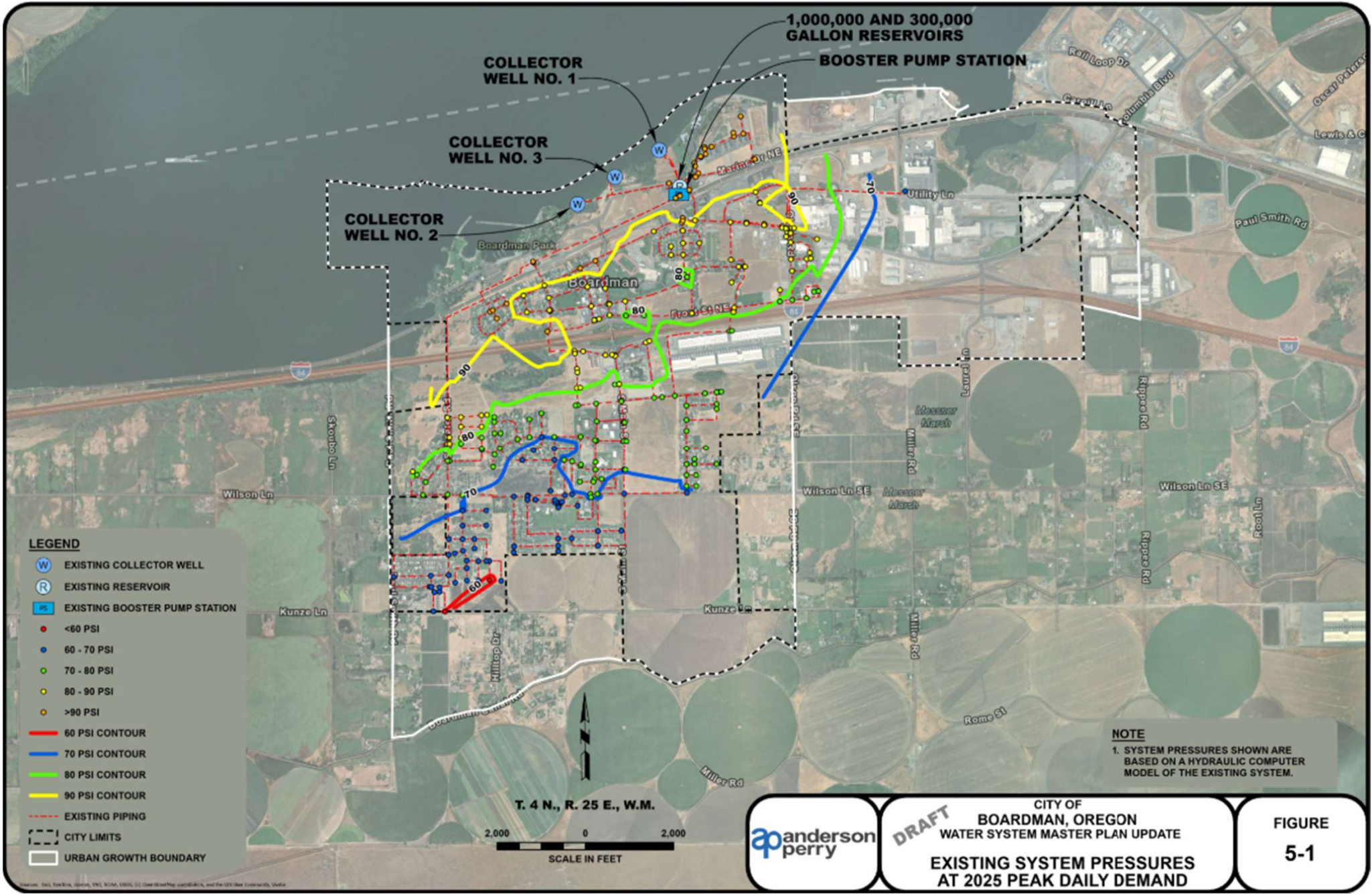


Figure 5-1 Existing System Pressures at 2025 Peak Daily Demand

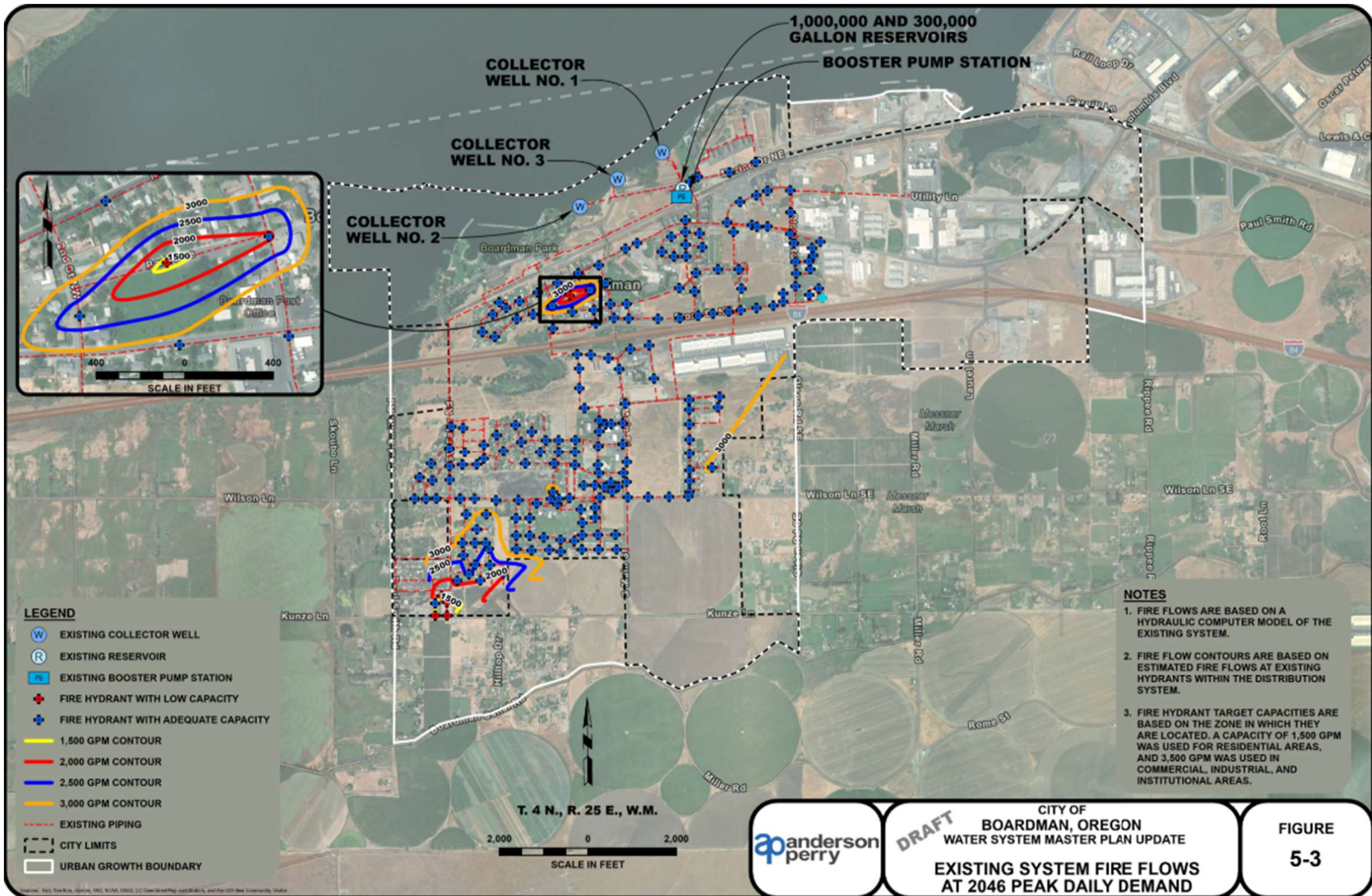


Figure 5-3 Existing System Fire Flows at 2046 Peak Daily Demand

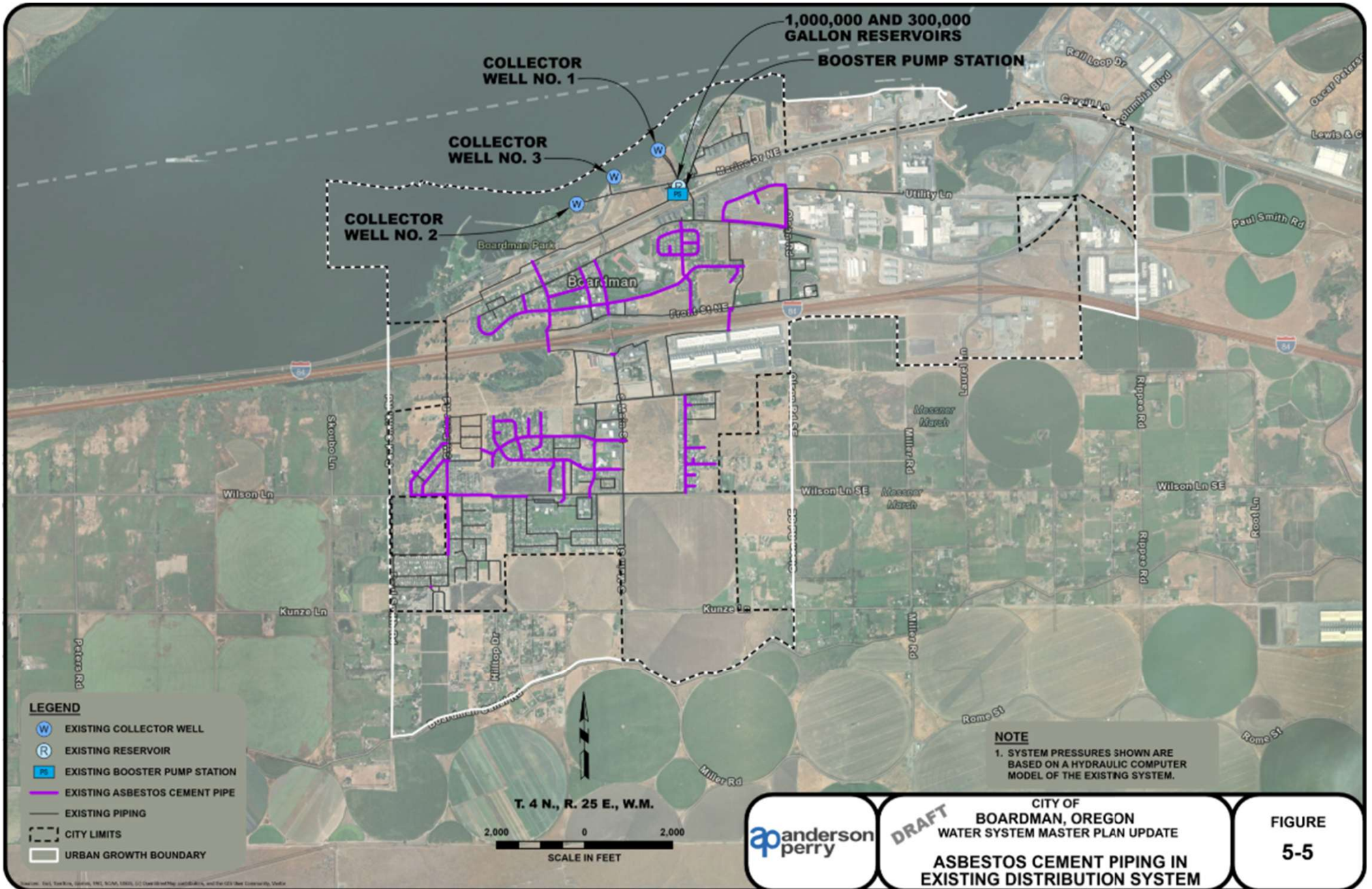


Figure 5-5 AC Piping in the Existing Distribution System

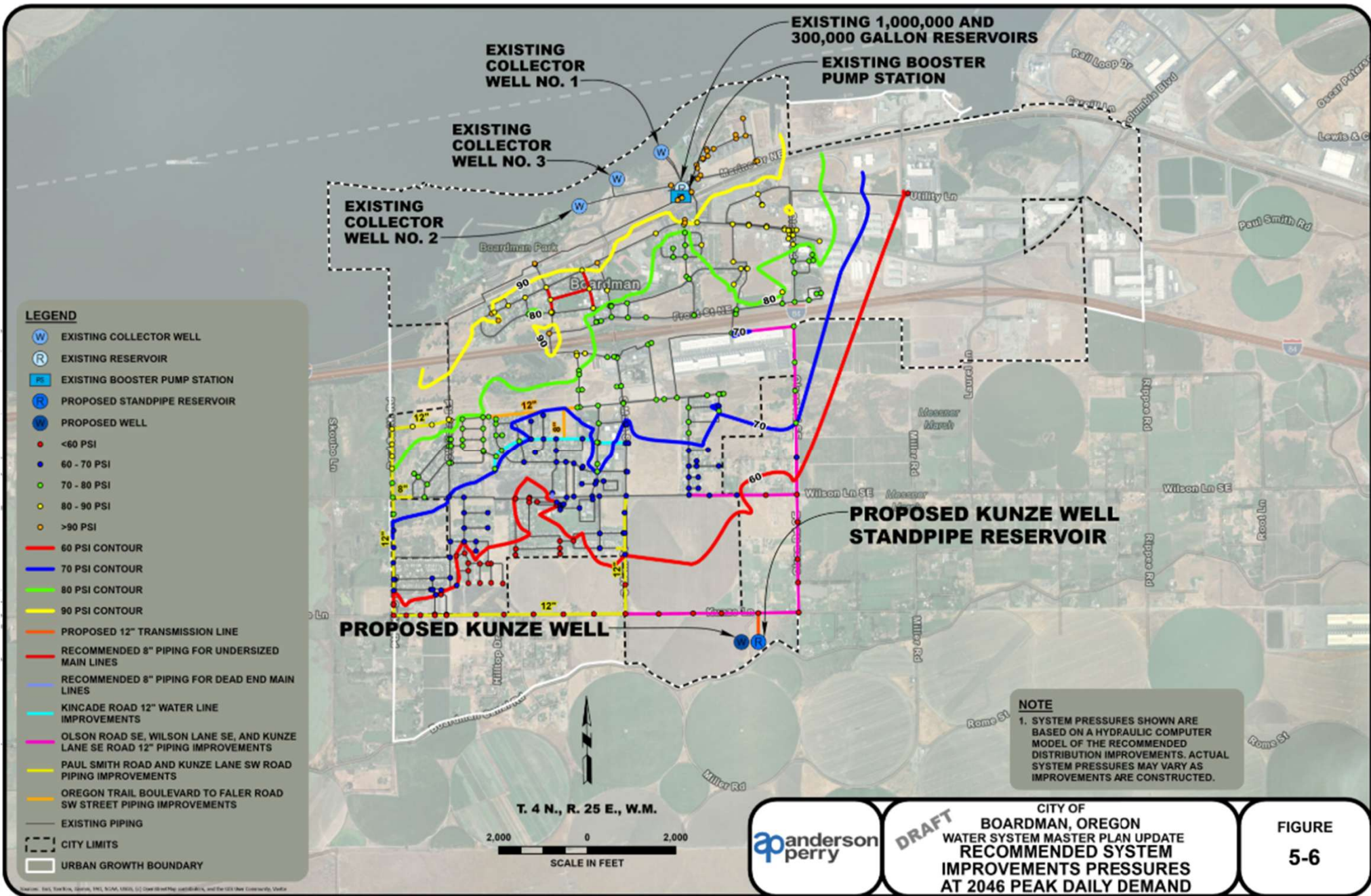


Figure 5-6 Recommended System Improvements Pressures at 2046 PDD

Comments and/or Questions

Mike Lees, P.E.

mlees@andersonperry.com

(541) 963-8309

