

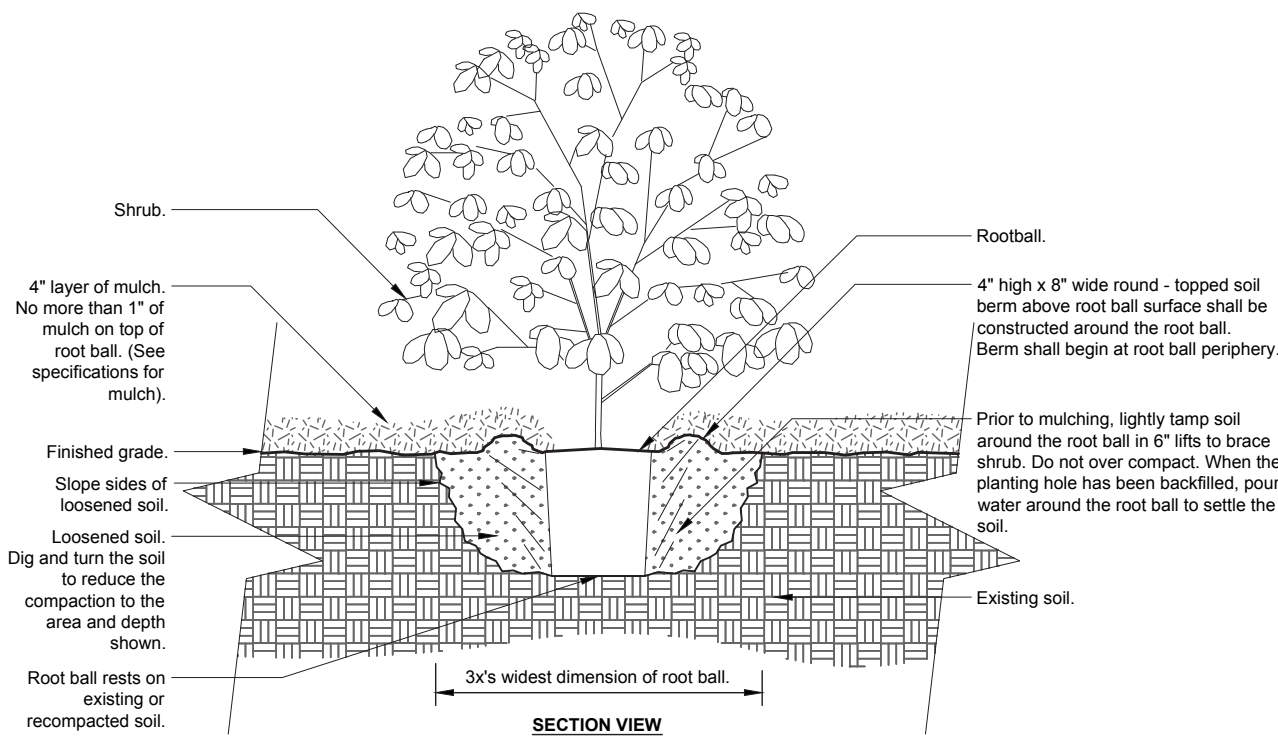
NOTE:  
FENCING:  
WEST SIDE FENCE: 6' HT.  
SOUTH SIDE FENCE 42" HT.

PLANT IMAGERY



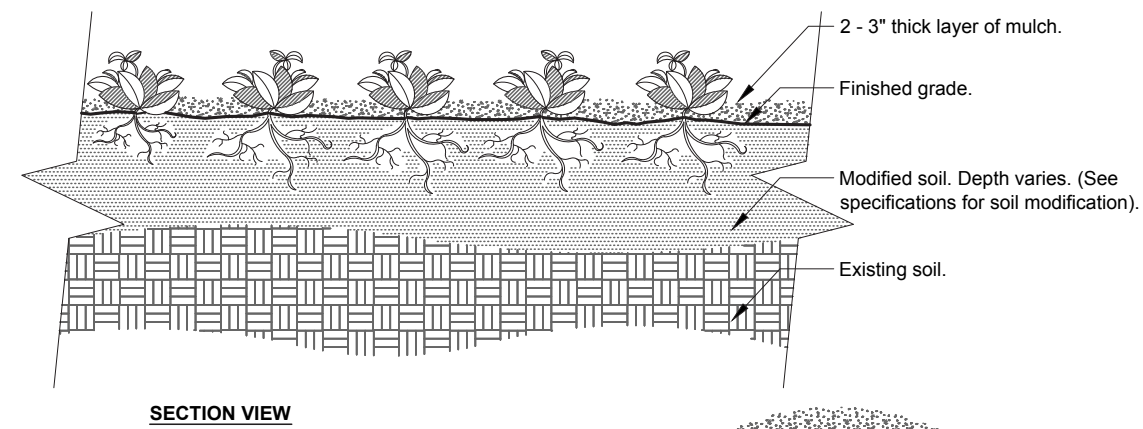
PLANT SCHEDULE

Quantity	Common Name	Botanical Name	Container	Height	Spread	Caliper	Notes
Tree							
2	Sassafras	Sassafras albidum				2.5" Cal.	
Shrub							
12	Dwarf Encore Azalea	Rhododendron Encore	3 gal.	1.5'-2'	1.5'		
	Fragrant Tea Olive	Osmanthus fragrans	7 gal.	3'-4'	2'-3'		
39	Japanese Barberry	Berberis thunbergii	5 gal.	2'-2.5'	1.5'		
20	Pringle's Dwarf Podocarpus	Podocarpus macrophyllus 'Pringle's Dwarf'	3 gal.	1.25'	1.25'		
4	Sasanqua camellia - Dwarf	Camellia sasanqua	7 gal.	2.5'			
Vines/Groundcover							
22	Asiatic jasmine	Trachelospermum asiaticum	1 gal.				
615 SF +/-	Empire Zoysia Sod						
1,585 SF +/-	Pinestraw Mulch	Pinestraw Mulch in Disturbed Areas					



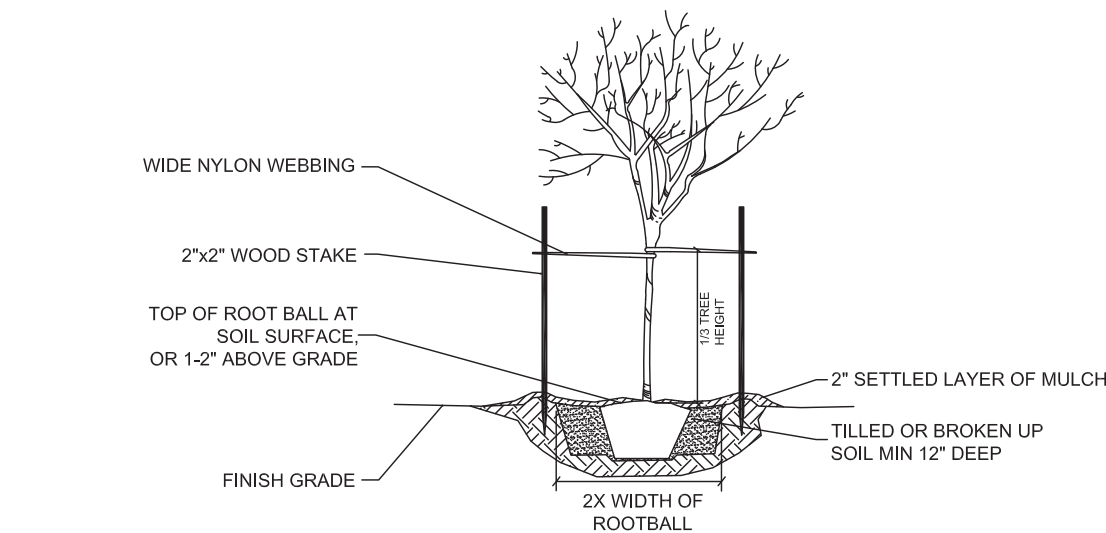
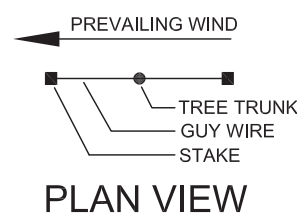
- Notes:
- 1- Shrubs shall be of quality prescribed in the root observations detail and specifications.
  - 2- See specifications for further requirements related to this detail.

Shrub - Unmodified Soil Detail  
Scale NTS

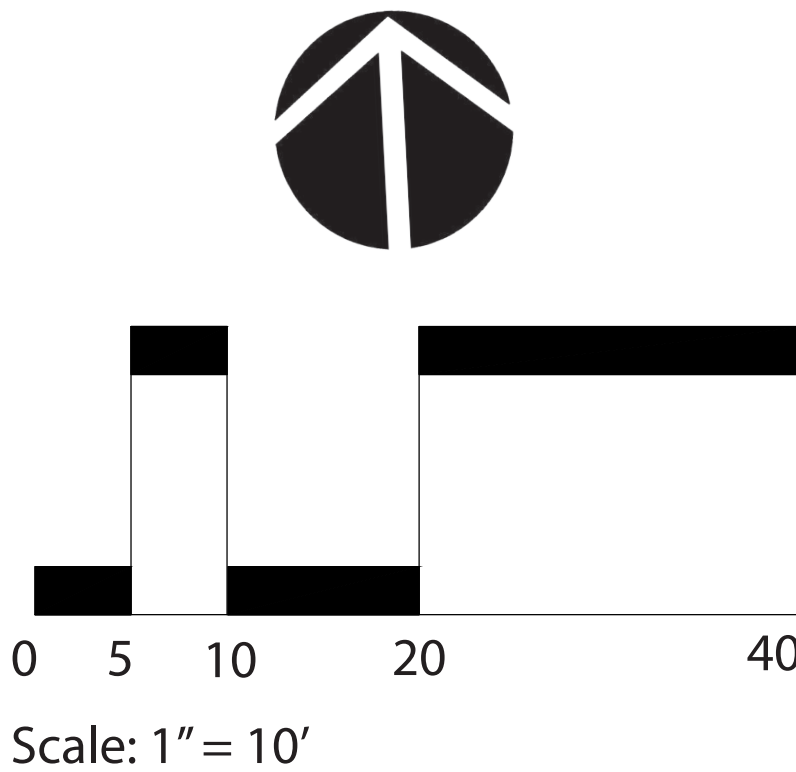


- Notes:
- 1- See planting legend for groundcover species, size, and spacing dimension.
  - 2- Small roots (1/2" or less) that grow around, up, or down the root ball periphery are considered a normal condition in container production and are acceptable however they should be eliminated at the time of planting. Roots on the periphery can be removed at the time of planting. (See root ball shaving container detail).
  - 3- Settle soil around root ball of each groundcover prior to mulching.

Groundcover Detail  
Scale NTS



Small Tree Planting (<2" Cal.) Detail  
Scale NTS



## FINAL LANDSCAPE DEVELOPMENT PLANS

For

## King Tide Custom Homes

10 Carroll Ct.  
Bluffton, SC

December 6, 2023



Prepared By:  
**Maria Drawdy**  
Landscape Architect

**MARIA GHYS DESIGNS LLC**

P.O. Box 3523, Bluffton, SC  
mariaghysdesigns@gmail.com  
(843) 816-2565

Landscape Plan Drafted by:  
Maria Drawdy, PLA

Architect:  
Ansley Hester Manuel, Architect  
Manuel Studio, LLC  
104 Pritchard Street  
Bluffton, SC 29910  
(843) 338-8932

Survey Provided by:  
T Square Surveying  
P.O. Box 330  
Bluffton, SC 29910  
(843) 757-2650

AERIAL IMAGE OF SITE 4,695 SF



SITE ANALYSIS:  
EXISTING TREE CANOPIES: +/- 1,610 SF

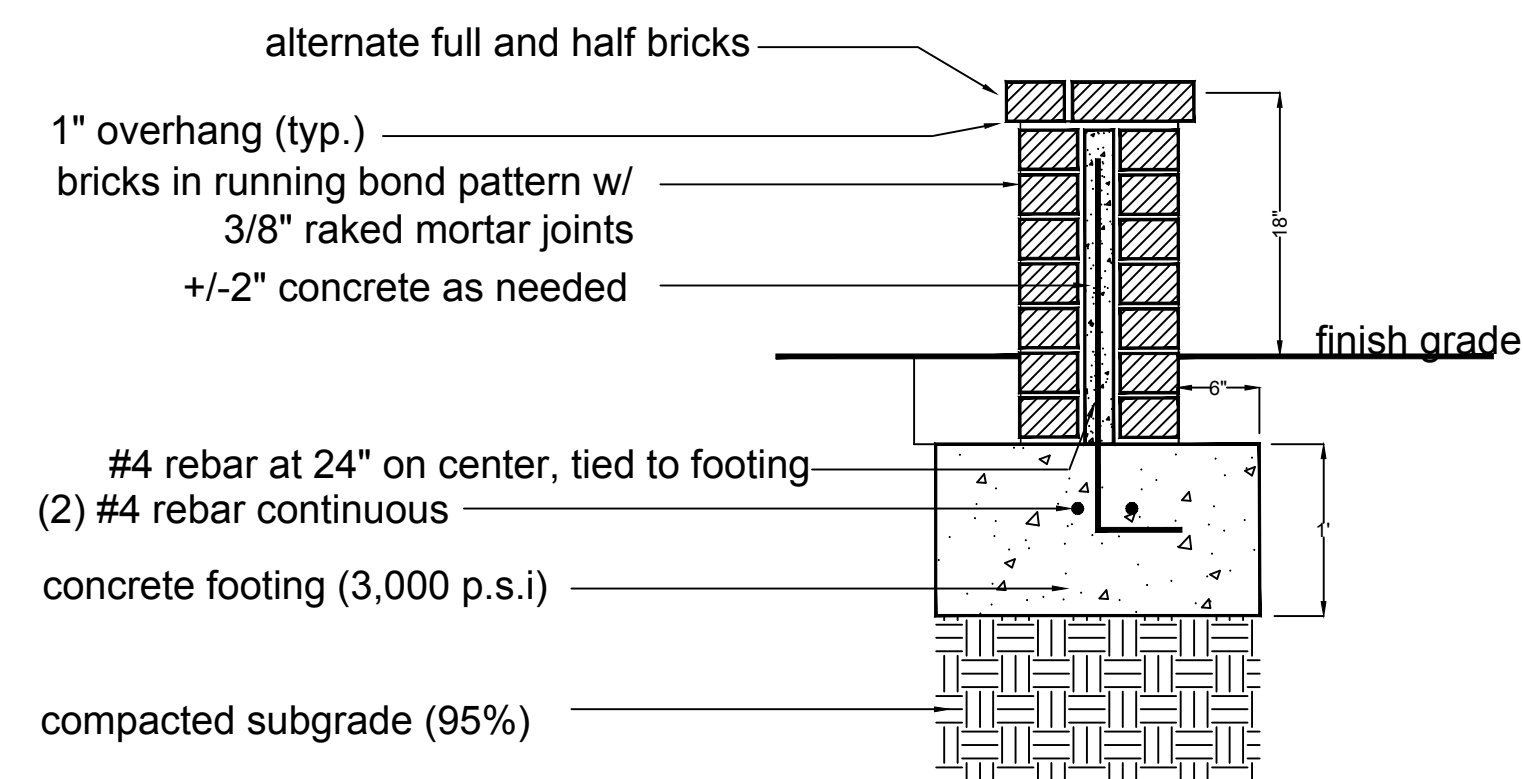


SITE ANALYSIS:  
EXISTING & PROPOSED  
TREE CANOPIES: +/- 810 SF

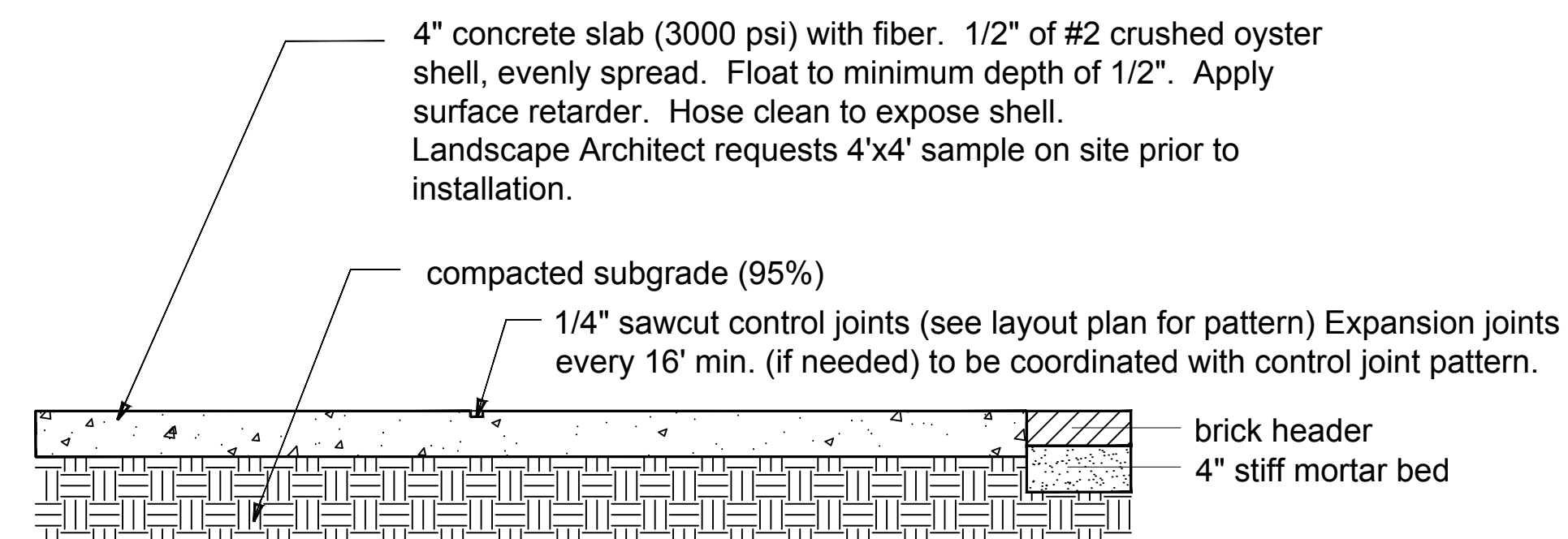


TREE CANOPY SUMMARY

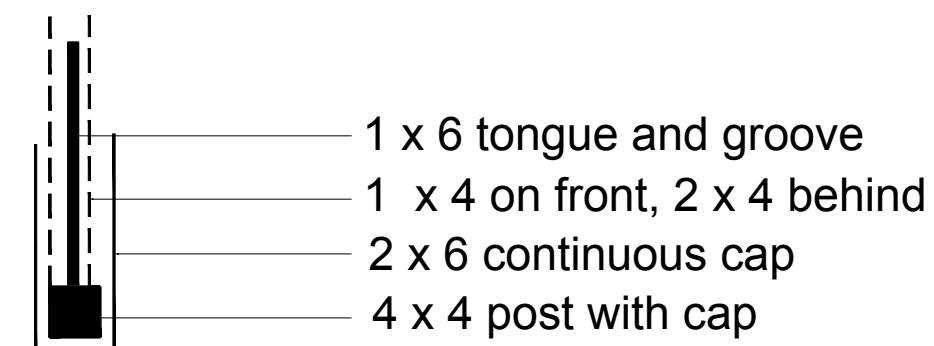
TOTAL LOT ACREAGE: 4,695 SF  
TOTAL ROOF SF: 1,979 +/- SF  
4,695-1,979 = 2,716 SF  
2,716 SF X 75% = 2,037 SF  
TOTAL REQUIRED TREE CANOPY COVERAGE @ 75% = +/- 2,037 SF  
TOTAL EXISTING ON SITE & ADJACENT TREE CANOPY: +/- 1,610 SF  
TOTAL PROPOSED TREE CANOPY: +/- 810 SF  
TOTAL EXISTING & ADJACENT TREE & PROPOSED TREE CANOPY: +/- 2,420 SF



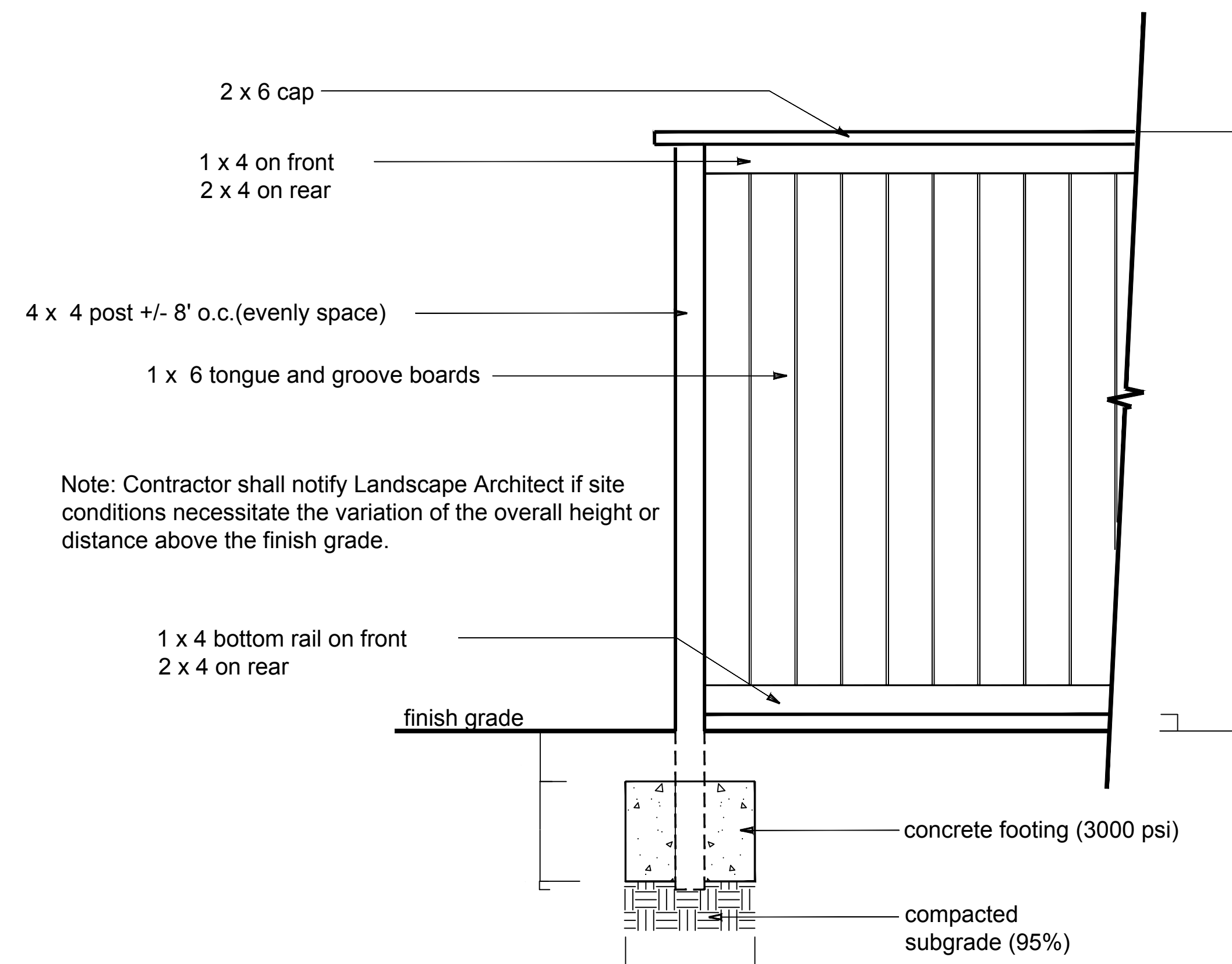
**Low Brick Wall**  
Scale: NTS



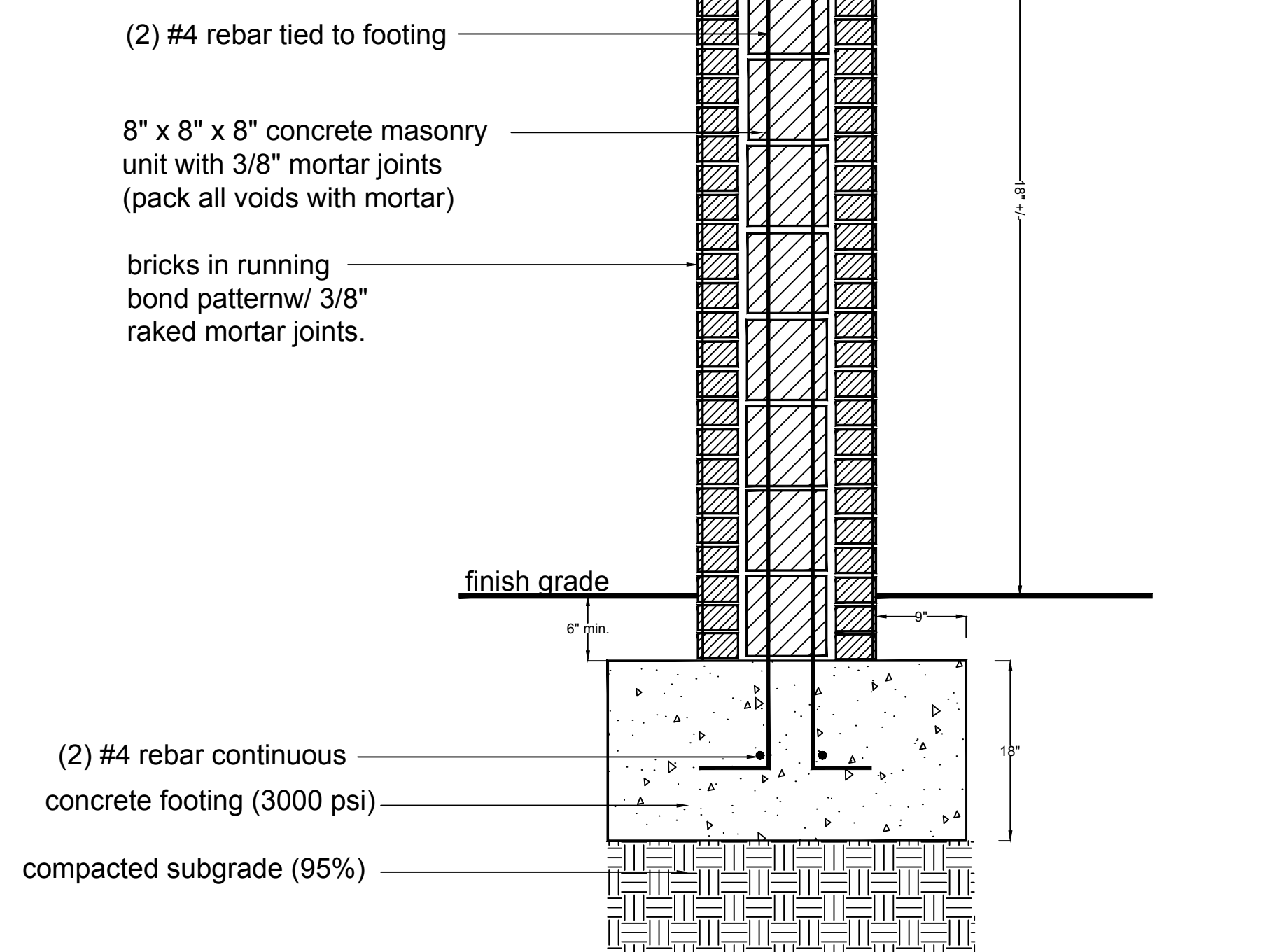
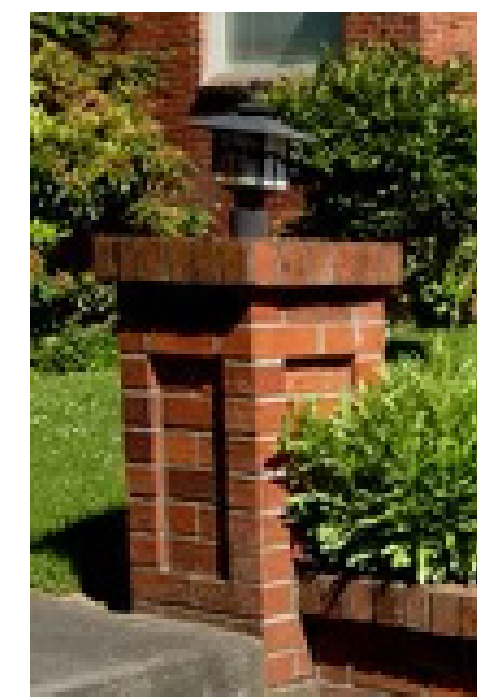
**Oyster Shell Tabby w/ Brick Landing Detail**  
Scale: NTS



**Plan View**  
scale 1" = 1'-0"



**Wood Fence**  
scale 1" = 1'-0"



**Brick Column Detail**  
Scale 1" = 1'-0"

**NOTE:**  
COLUMN LIGHTS AT ENTRIES  
ONLY

## HARDSCAPE DETAILS For King Tide Custom Homes

10 Carroll Ct.  
Bluffton, SC  
December 6, 2023



Prepared By:  
**Maria Drawdy**  
Landscape Architect

**MARIA GHYS DESIGNS LLC**  
P.O. Box 3523, Bluffton, SC  
mariaghysdesigns@gmail.com  
(843) 816-2565

Landscape Plan Drafted by:  
Maria Drawdy, PLA

Architect:  
Ansley Hester Manuel, Architect  
Manuel Studio, LLC  
104 Pritchard Street  
Bluffton, SC 29910  
(843) 338-8932

Survey Provided by:  
T Square Surveying  
P.O. Box 330  
Bluffton, SC 29910  
(843) 757-2650