

DESCRIPTION	ACTUAL COVERAGE (SF)
TOTAL LIMIT OF WORK AREA	5,541 S.F.
BUILDING FOOTPRINT	±2,617 S.F.
REMAINING SITE AREA	2,924 S.F.
MATURE CANOPY COVERAGE (EXISTING AND PROPOSED)	2,252 S.F.
% CANOPY COVERAGE (75% MIN.)	77%

NOTE: LIGHTING SYMBOLS ARE GRAPHIC IN NATURE AND ARE NOT INTENDED TO BE TO SCALE. REFER TO SITE DETAILS FOR SIZES AND DIMENSIONS.

PLANT KEY LEGEND

PLANTING REFERENCE NOTES:

- Wilmer Jones Keefe**
Land  **Ltd.**
 landscape architecture
 land planning
-
- www.wjktld.com
 53 Promenade Street, Suite 301 | Burlington, South Carolina | 86010 | ph 843.727.7411

SITE DEVELOPMENT PLANS

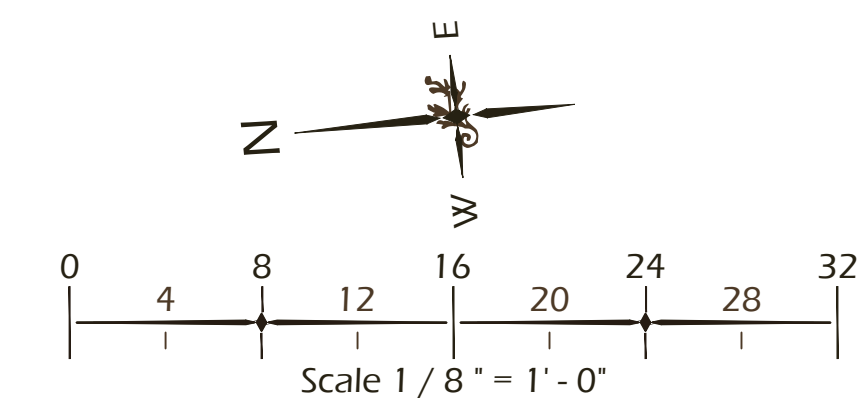
TABBY SHELL ROAD / LOT 14 (#26)

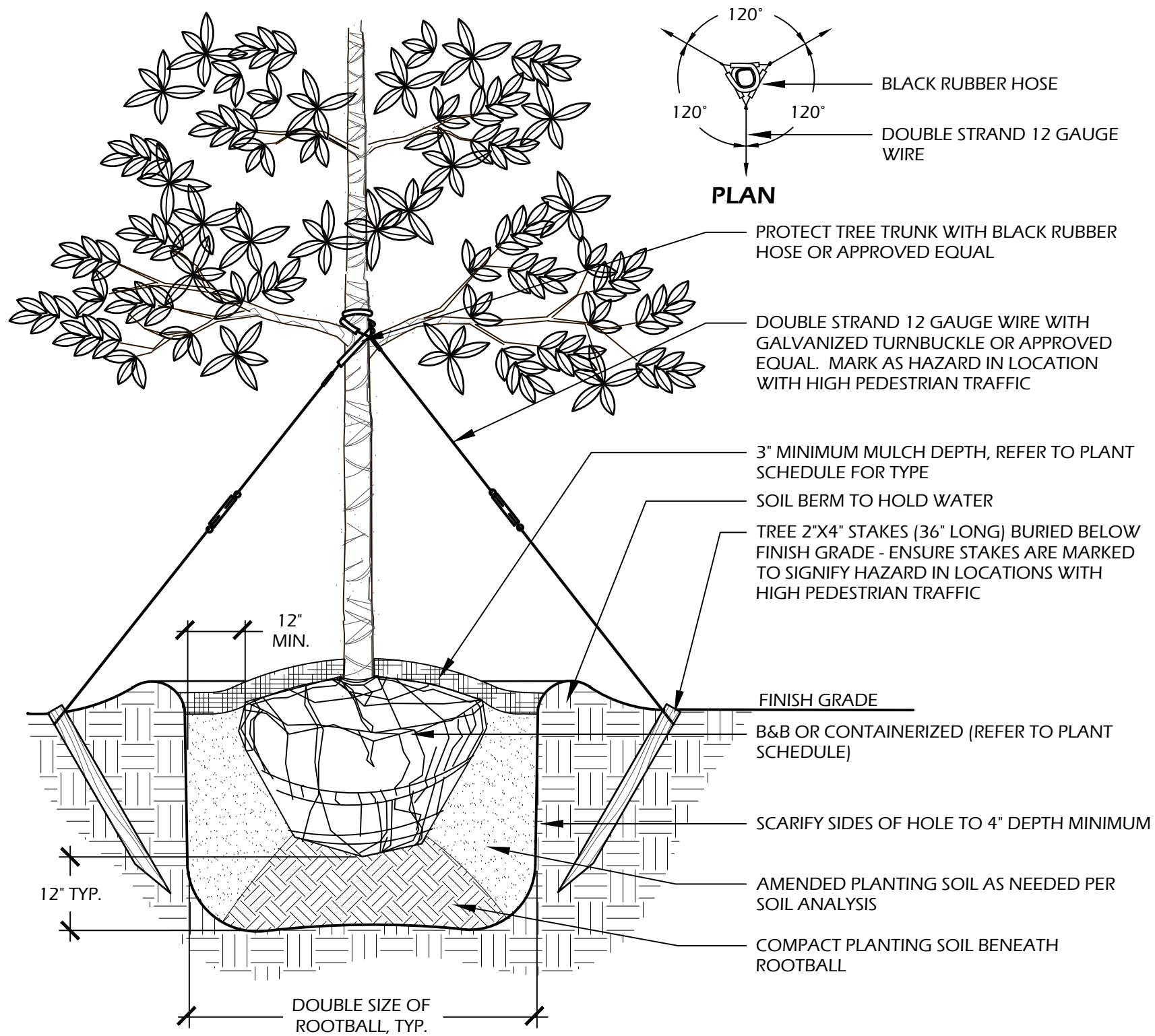
TABBY ROADS / BLUFFTON, SOUTH CAROLINA

FINAL SUBMITTAL
PLAN, NOT FOR
CONSTRUCTION

DRAWING NUMBER

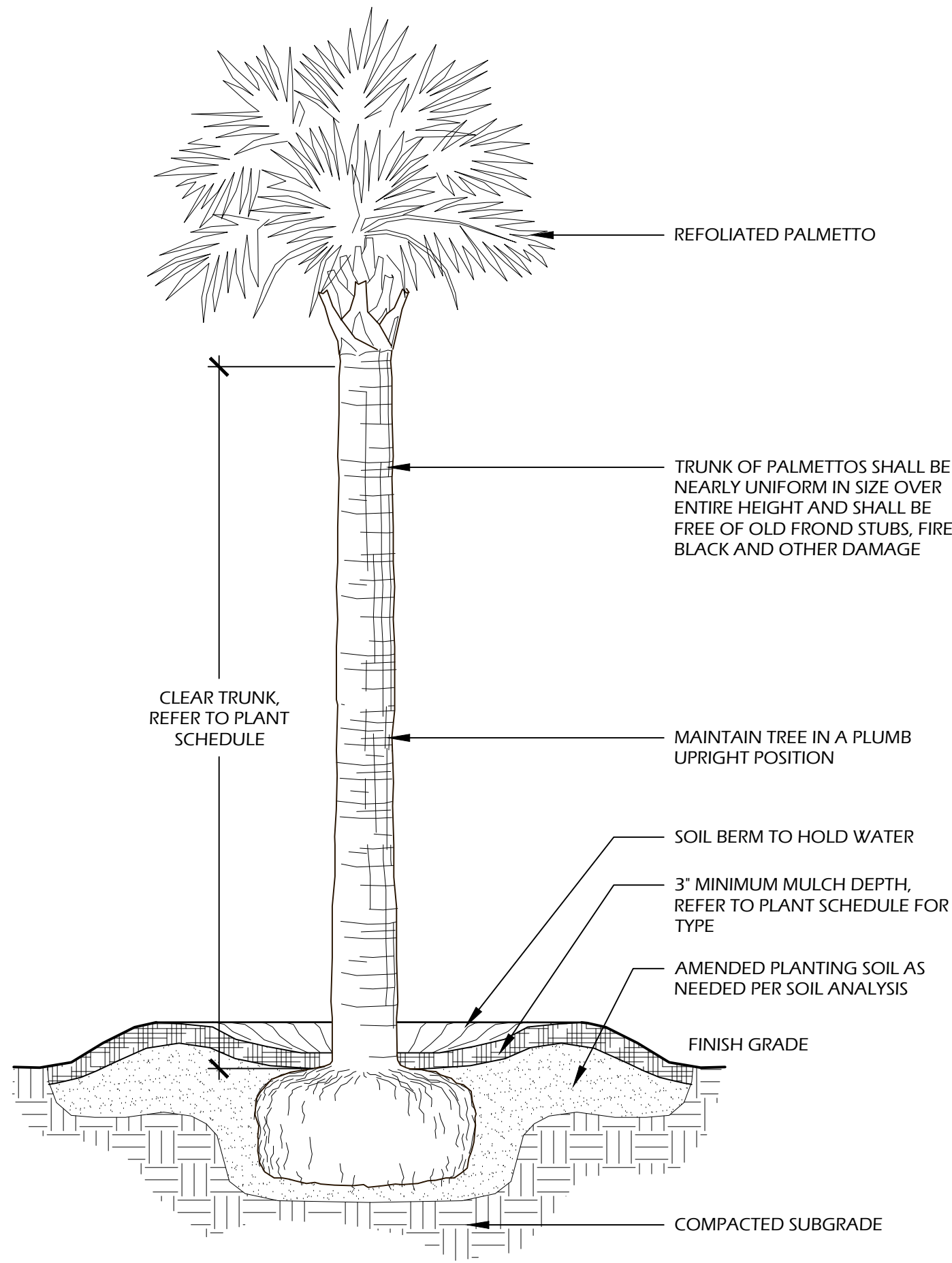
L2





- NOTES:**
- TREE STAKING OPTIONAL HOWEVER, LANDSCAPE CONTRACTOR RESPONSIBLE FOR MAINTAINING TREES IN AN UPRIGHT (90 DEGREE/ PERPENDICULAR) POSITION FOR 1 YEAR AFTER PLANTING IS COMPLETE OR UNTIL TREE ROOT SYSTEM IS FULLY ESTABLISHED AND STURDY. FINAL TREE STAKING DETAILS AND PLACEMENT TO BE APPROVED BY OWNER'S REPRESENTATIVE.
 - CONTRACTOR SHALL ASSURE PERCOLATION OF ALL PLANTING PITS PRIOR TO INSTALLATION.
 - IN SEMI-IMPERVIOUS SOIL CONDITIONS, ROOTBALL ELEVATION SHALL BE 2" ABOVE FINISH GRADE. COORDINATE WITH OWNER'S REPRESENTATIVE PRIOR TO SETTING ROOTBALL ELEVATIONS.

1 // L3 TREE PLANTING
SCALE: N.T.S.

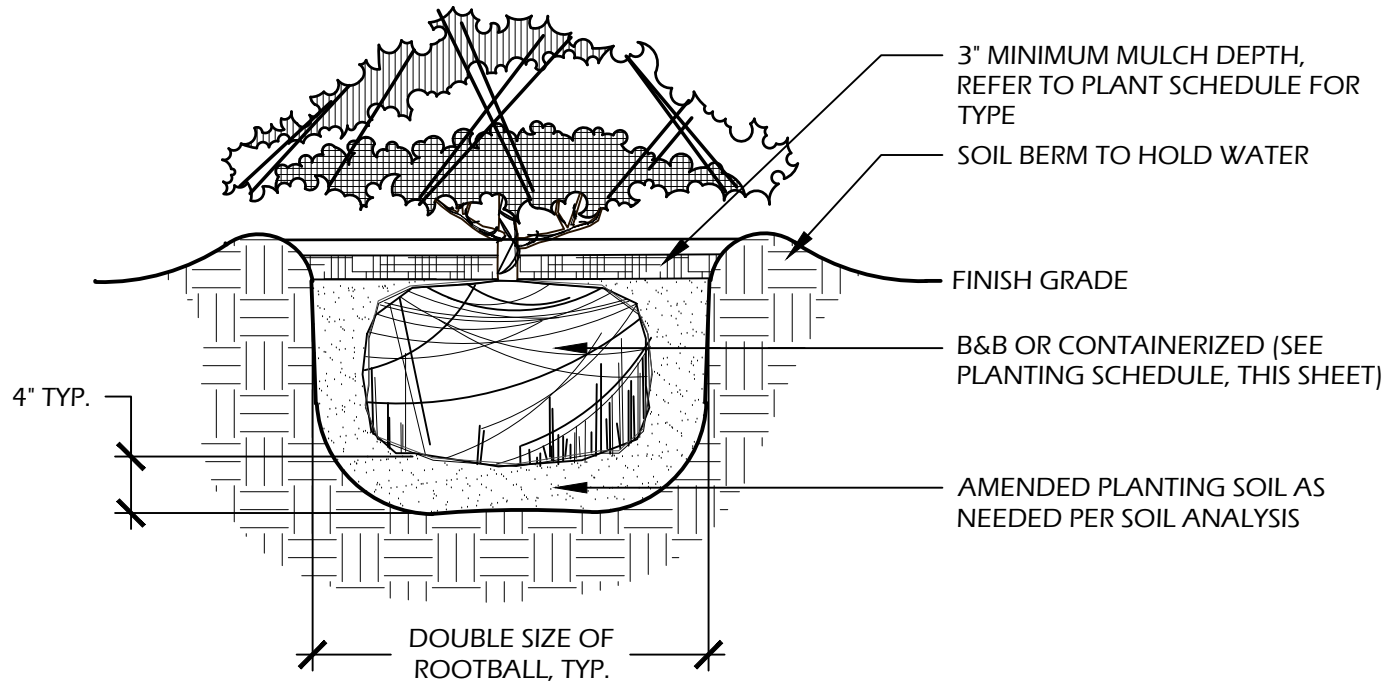


- NOTES:**
- FINAL TREE STAKING DETAILS AND PLACEMENT TO BE APPROVED BY OWNER OR OWNER'S REPRESENTATIVE.
 - CONTRACTOR SHALL ASSURE PERCOLATION OF ALL PLANTING PITS PRIOR TO INSTALLATION.
 - SABAL PALMETTOS SHALL BE REFOOLIATED, PROTECT CABBAGE HEAD FROM DAMAGE.

2 // L3 PALM TREE PLANTING
SCALE: N.T.S.

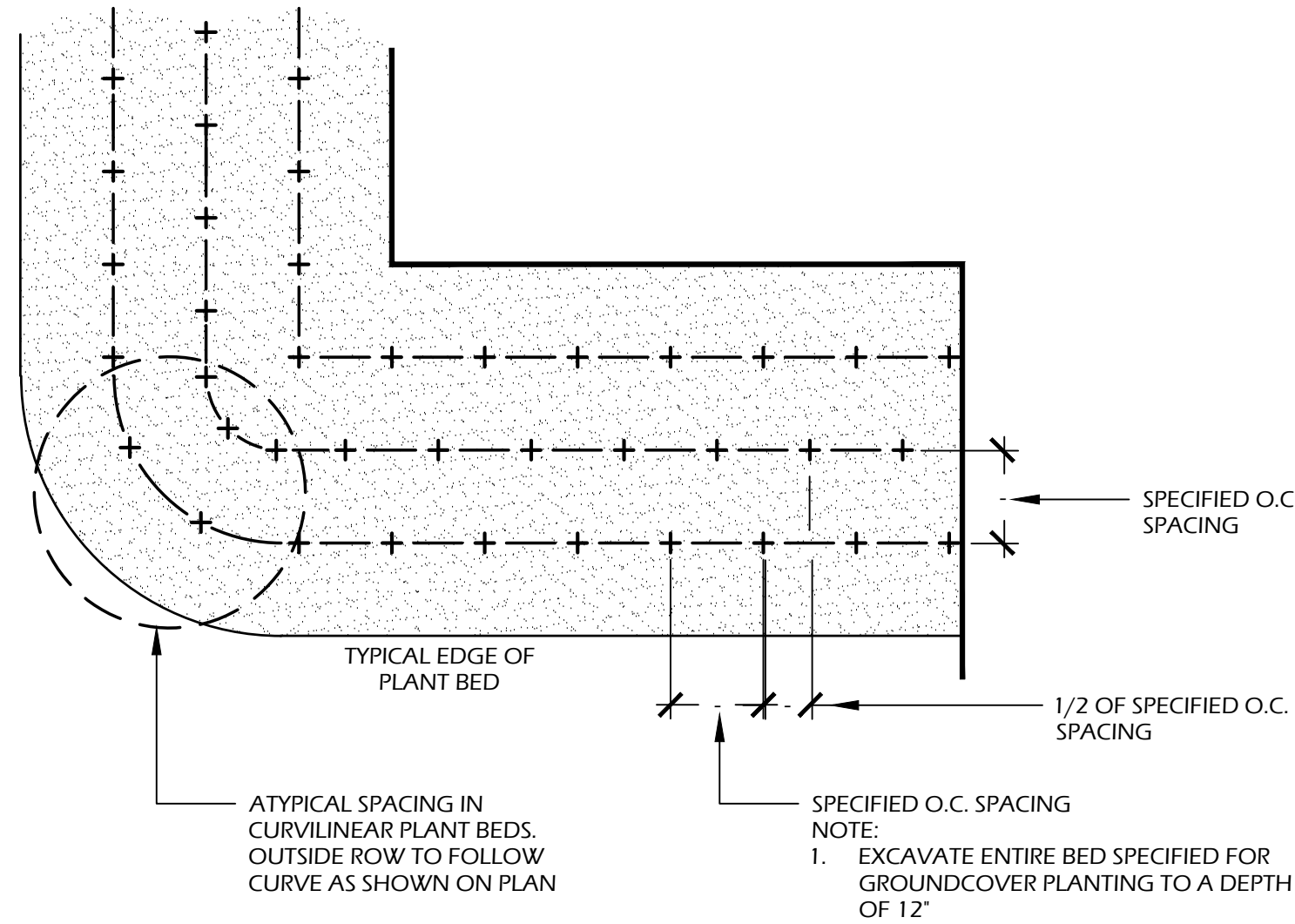
PLANT SCHEDULE:

Quantity	Abbrev	Botanical Name	Common Name	Height	Spread	Container	Cal./Spacing	Notes
TREES								
1	QUEV	Quercus virginiana	Live Oak	10'-12'	4'-5'	45 gal.	-	Full
1	SABP	Sabal palmetto	Cabbage Palm	12'-16'	-	Cont.	-	Refoliated, full clear trunk, refer to plan for heights
UNDERSTORY TREES								
1	LAGT	Lagerstroemia indica x fauriei 'Tuscarora'	Tuscarora Crape Myrtle	10'-12'	5'-6'	45 gal.	-	Full
SHRUBS								
1	CAMS	Camellia sasanqua	Sasanqua Camellia	3'-4'	2'-3'	15 gal.	-	Full
1	HYDP	Hydrangea paniculata 'Limelight'	Limelight Hydrangea	24'-30'	24'-30'	7 gal.	-	Full
3	LORC	Loropetalum chinense 'Chang Nian Hong'	Ever Red Fringe Flower	30'-36'	24'-30'	7 gal.	-	Full
19	PODM	Podocarpus macrophyllus	Podocarpus	36'-42'	24'-30'	15 gal.	-	Full
30	PODP	Podocarpus macrophyllus 'Pringles Dwarf'	Dwarf Podocarpus	18'-24'	16'-20'	7 gal.	-	Full
GROUND COVERS, VINES & PERENNIALS								
10	DIAM	Dianella tasmanica 'Variegata'	Variegated Flax Lily	12'-18"	12'-18"	1 gal.	24" O.C.	Full
25	DIEI	Dietes iridioides	White African Iris	12'-18"	8'-12"	1 gal.	24" O.C.	Full
8	TRAJ	Trachelospermum jasminoides	Confederate jasmine	4'-6"	12" runners	1 gal.	18" O.C.	Full
SOD & MULCH								
550	SOD-SF	-	Empire Zoysia Sod	-	-	-	-	-
2,350	MULCH-SF	Pine Straw - all disturbed areas	Pine Straw	-	-	-	-	-

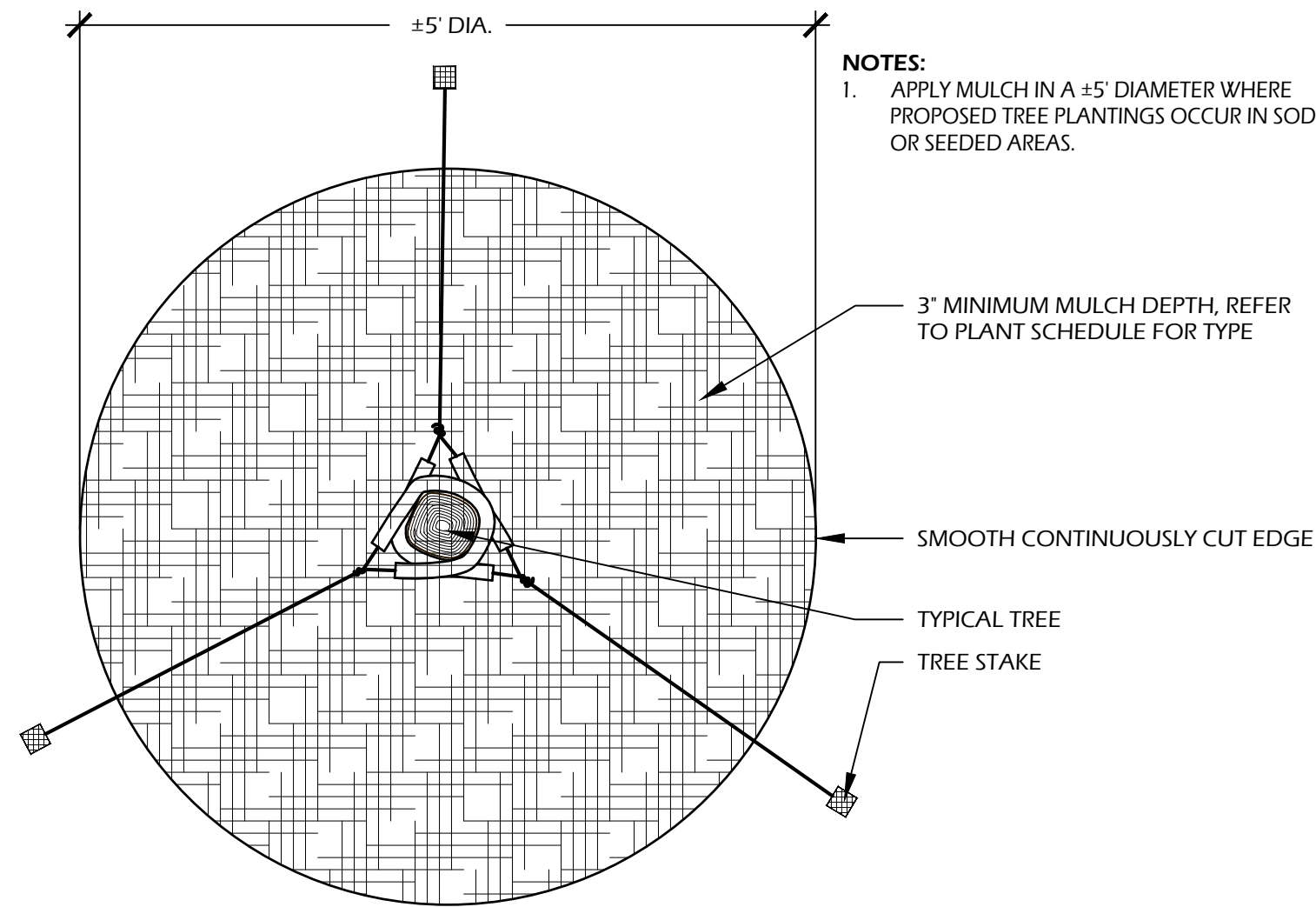


- NOTES:**
- WHEN GROUND COVERS AND SHRUBS ARE USED IN MASSES, ENTIRE BED TO BE EXCAVATED TO RECEIVE PLANTING SOIL AND PLANT MATERIAL.
 - CONTRACTOR SHALL ASSURE PERCOLATION OF ALL PLANTING PITS PRIOR TO INSTALLATION.
 - IN SEMI-IMPERVIOUS SOIL CONDITIONS, ROOTBALL ELEVATION SHALL BE ±2" ABOVE FINISH GRADE. COORDINATE WITH OWNER'S REPRESENTATIVE PRIOR TO SETTING ROOTBALL ELEVATIONS.

3 // L3 SHRUB PLANTING
SCALE: N.T.S.

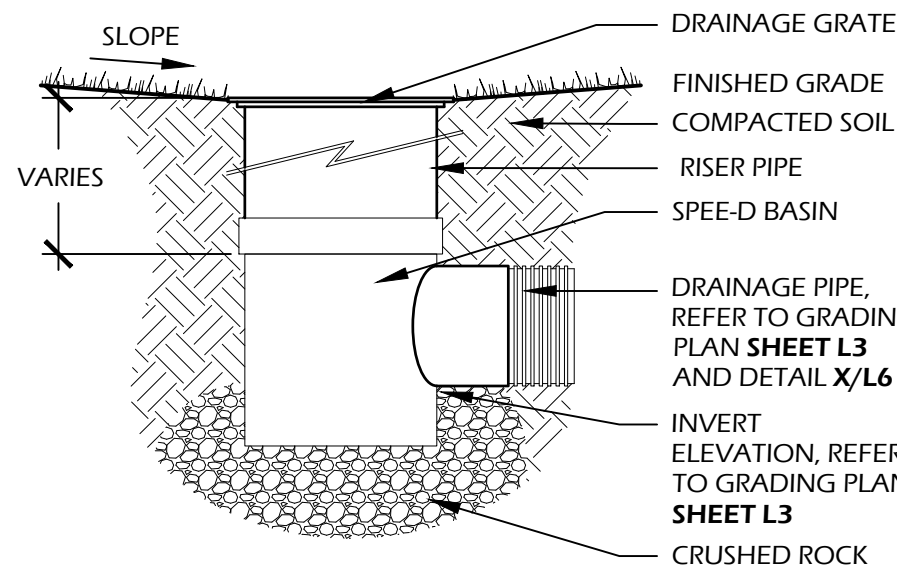


4 // L3 GROUND COVER PLANTING
SCALE: N.T.S.



5 // L3 TREE STAKING
SCALE: N.T.S.

ATTACHMENT 4



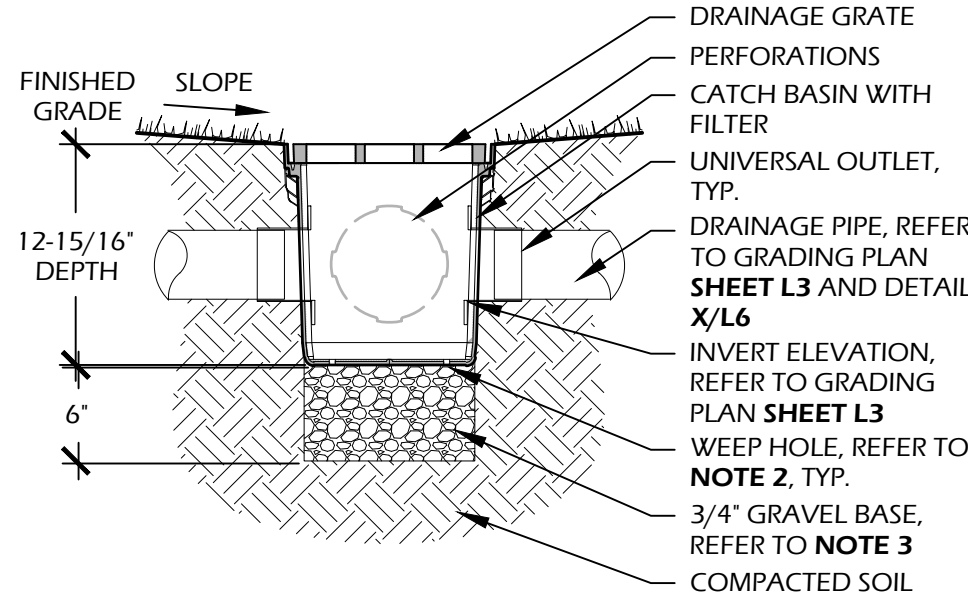
- NOTES:
1. INSTALL TO BE COMPLETED IN ACCORDANCE WITH MANUFACTURERS SPECIFICATIONS.
 2. DO NOT SCALE DRAWING.
 3. THIS DRAWING IS INTENDED FOR USE BY ARCHITECTS, ENGINEERS, CONTRACTOR, CONSULTANTS AND DESIGN PROFESSIONALS FOR PLANNING PURPOSES ONLY.
 4. ALL INFORMATION CONTAINED HEREIN WAS CURRENT AT THE TIME OF DEVELOPMENT BUT MUST BE REVIEWED AND APPROVED BY THE PRODUCT MANUFACTURER TO BE CONSIDERED ACCURATE.
 5. CONTRACTORS NOTE: FOR PRODUCT AND COMPANY INFORMATION VISIT WWW.CADDDETAILS.COM/INFO AND ENTER REFERENCE NUMBER 558-206

MANUFACTURER INFO:
NATIONAL DIVERSIFIED SALES, INC.
851 N. HARVARD AVE.
LINDSAY, CA. 93247
PHONE: (800) 726.1994
WEB: WWW.NDSPRO.COM

DRAINAGE GRATE: #40, 6" ROUND GRATE
PIPE COLOR: BLACK
PIPE INFO: STRUCTURAL FOAM POLYOLEFIN GRATE WITH U.V. INHIBITOR

CATCH BASIN: #101, 6" ROUND SPEED-BASIN WITH 3" AND 4" LOCKING OUTLET
BASIN INFO: STYRENE CATCH BASIN WITH LOCKING OUTLET

RISER: #66, 6" SEWER AND DRAIN RISER PIPE, LENGTH AND USE AS REQUIRED



MANUFACTURER INFO:
NATIONAL DIVERSIFIED SALES, INC.
851 N. HARVARD AVE.
LINDSAY, CA. 93247
PHONE: (800) 726.1994
WEB: WWW.NDSPRO.COM

DRAINAGE GRATE: #1211, 12"x12" SQUARE GRATE
GRATE COLOR: BLACK
GRATE INFO: STRUCTURAL FOAM POLYOLEFIN GRATE WITH U.V. INHIBITOR

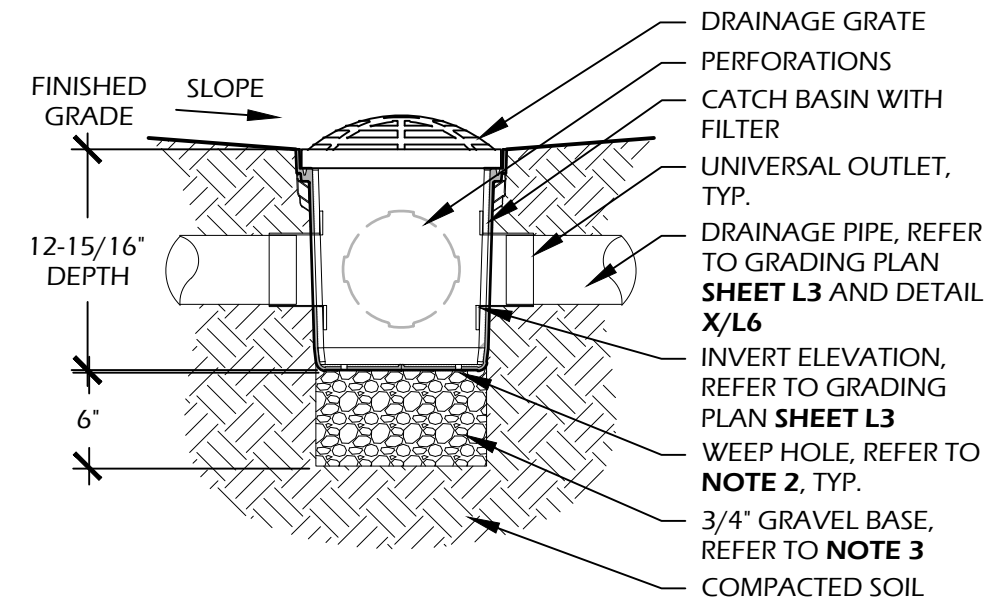
CATCH BASIN: #1200, 12"x12" CATCH BASIN, 2 OPENINGS
BASIN COLOR: BLACK
BASIN INFO: POLYOLEFIN TAPERED CATCH BASIN WITH U.V. INHIBITORS

FILTER: #1200FF, 12" CATCH BASIN FILTER
FILTER COLOR: BLUE FRAME / BLACK BAG

UNIVERSAL OUTLET: #1266, 6" UNIVERSAL LOCKING OUTLET AND #1206, 6" UNIVERSAL ADAPTER PLUG
OUTLET COLOR: BLACK
OUTLET INFO: STYRENE, USE ADAPTER PLUG AS REQUIRED (WHERE ONLY ONE DRAIN LINE RUNS INTO CATCH BASIN)

RISER: #1216, 12"x12" CATCH BASIN RISER, BLACK, STYRENE, USE AS REQUIRED

- NOTES:
1. THIS DETAIL IS USED FOR DESIGN INTENT ONLY. REFER TO TO MANUFACTURERS DETAIL AND SPECIFICATIONS FOR ACTUAL INSTALLATION.
 2. DRILL WEEP HOLE TYPICAL OF 4 PLACES AT BOTTOM CORNERS.
 3. GRAVEL BASE SHALL BE USED TO PREVENT STANDING WATER. GRATE TO BE ATTACHED TO CATCH BASIN WITH SCREW(S) PROVIDED AT TIME OF INSTALLATION.
 4. RISER (IF NEEDED) CAN BE CUT TO ACHIEVE EXACT ELEVATION, DO NOT USE OVER FIVE (5) RISERS WITH CATCH BASIN.
 5. N.D.S. ADAPTERS THAT FIT THIS CATCH BASIN ARE AS FOLLOWS: #1242, #1243, #1245, #1266, AND #1889, USE #1206 IF PLUGGING AN OUTLET.
 6. PERFORATION ON NON OPEN SIDES AND BOTTOM TO BE CUT OUT WHEN ADDING EXTRA OUTLETS.
 7. EXISTING SOILS SHOULD BE EVALUATED TO ENSURE PROPER STRUCTURAL AND PERMEABILITY PROPERTIES.
 8. DO NOT SCALE DRAWING.
 9. THIS DRAWING IS INTENDED FOR USE BY ARCHITECTS, ENGINEERS, CONTRACTORS, CONSULTANTS AND DESIGN PROFESSIONALS FOR PLANNING PURPOSES ONLY.
 10. ALL INFORMATION CONTAINED HEREIN WAS CURRENT AT THE TIME OF DEVELOPMENT BUT MUST BE REVIEWED AND APPROVED BY THE PRODUCT MANUFACTURER TO BE CONSIDERED ACCURATE.
 11. CONTRACTORS NOTE: FOR PRODUCT AND COMPANY INFORMATION VISIT WWW.CADDDETAILS.COM/INFO AND ENTER REFERENCE NUMBER 558-187 AND / OR 558-192.



MANUFACTURER INFO:
NATIONAL DIVERSIFIED SALES, INC.
851 N. HARVARD AVE.
LINDSAY, CA. 93247
PHONE: (800) 726.1994
WEB: WWW.NDSPRO.COM

DRAINAGE GRATE: #1290, 12"x12" ATRIUM GRATE
GRATE COLOR: BLACK
GRATE INFO: STRUCTURAL FOAM POLYOLEFIN DOME ATRIUM GRATE WITH U.V. INHIBITOR

CATCH BASIN: #1200, 12"x12" CATCH BASIN, 2 OPENINGS
BASIN COLOR: BLACK
BASIN INFO: POLYOLEFIN TAPERED CATCH BASIN WITH U.V. INHIBITORS

FILTER: #1200FF, 12" CATCH BASIN FILTER
FILTER COLOR: BLUE FRAME / BLACK BAG

UNIVERSAL OUTLET: #1266, 6" UNIVERSAL LOCKING OUTLET AND #1206, 6" UNIVERSAL ADAPTER PLUG
OUTLET COLOR: BLACK
OUTLET INFO: STYRENE, USE ADAPTER PLUG AS REQUIRED (WHERE ONLY ONE DRAIN LINE RUNS INTO CATCH BASIN)

RISER: #1216, 12"x12" CATCH BASIN RISER, BLACK, STYRENE, USE AS REQUIRED

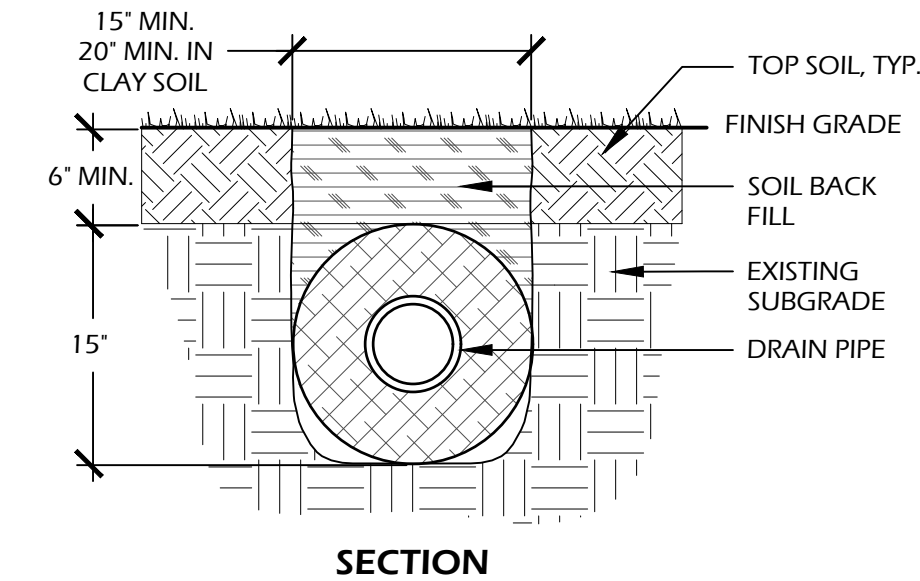
- NOTES:
1. THIS DETAIL IS USED FOR DESIGN INTENT ONLY. REFER TO TO MANUFACTURERS DETAIL AND SPECIFICATIONS FOR ACTUAL INSTALLATION.
 2. DRILL WEEP HOLE TYPICAL OF 4 PLACES AT BOTTOM CORNERS.
 3. GRAVEL BASE SHALL BE USED TO PREVENT STANDING WATER. GRATE TO BE ATTACHED TO CATCH BASIN WITH SCREW(S) PROVIDED AT TIME OF INSTALLATION.
 4. RISER (IF NEEDED) CAN BE CUT TO ACHIEVE EXACT ELEVATION, DO NOT USE OVER FIVE (5) RISERS WITH CATCH BASIN.
 5. N.D.S. ADAPTERS THAT FIT THIS CATCH BASIN ARE AS FOLLOWS: #1242, #1243, #1245, #1266, AND #1889, USE #1206 IF PLUGGING AN OUTLET.
 6. PERFORATION ON NON OPEN SIDES AND BOTTOM TO BE CUT OUT WHEN ADDING EXTRA OUTLETS.
 7. EXISTING SOILS SHOULD BE EVALUATED TO ENSURE PROPER STRUCTURAL AND PERMEABILITY PROPERTIES.
 8. DO NOT SCALE DRAWING.
 9. THIS DRAWING IS INTENDED FOR USE BY ARCHITECTS, ENGINEERS, CONTRACTORS, CONSULTANTS AND DESIGN PROFESSIONALS FOR PLANNING PURPOSES ONLY.
 10. ALL INFORMATION CONTAINED HEREIN WAS CURRENT AT THE TIME OF DEVELOPMENT BUT MUST BE REVIEWED AND APPROVED BY THE PRODUCT MANUFACTURER TO BE CONSIDERED ACCURATE.
 11. CONTRACTORS NOTE: FOR PRODUCT AND COMPANY INFORMATION VISIT WWW.CADDDETAILS.COM/INFO AND ENTER REFERENCE NUMBER 558-187 AND / OR 558-192.



© 2023 WJK LTD.
DESIGN CONCEPTS, DRAWING, SHEETS, LOGOS, SPECIFICATIONS, DETAILS, WRITTEN MATERIAL SHALL NOT BE USED OR REPRODUCED IN WHOLE OR IN PART IN ANY FORM WITHOUT PRIOR WRITTEN CONSENT OF WJK LTD.
THIS SHEET TO SCALE AT: 24"x36"

SITE DEVELOPMENT PLANS
FOR
SEWELL RESIDENCE
TABBY SHELL ROAD / LOT 14 (#26)
TABBY ROADS / BLUFFTON, SOUTH CAROLINA

1 // L4 6" AREA DRAIN
SCALE: N.T.S.



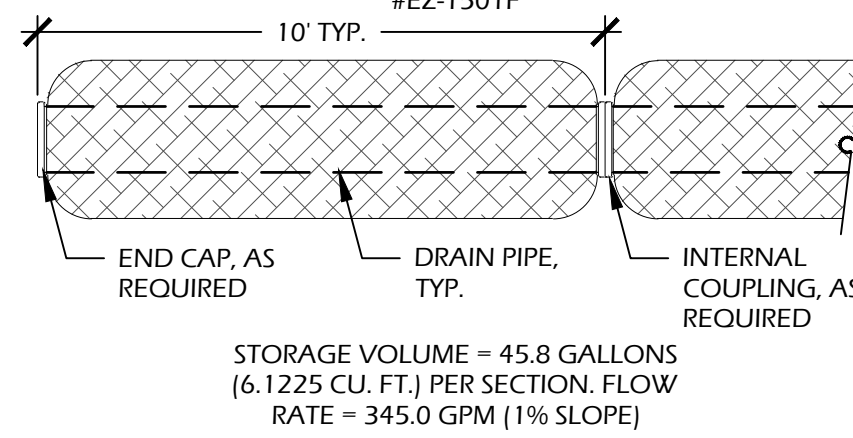
- NOTES:
1. INSTALL PER MANUFACTURERS SPECIFICATIONS.
 2. ADDITIONAL COVER MAY BE REQUIRED BASED ON SITE CONDITIONS.
 3. 12" COVER REQUIRED TO OBTAIN AN H-10 LOAD RATING.
 4. DO NOT SCALE DRAWING.
 5. ALL INFORMATION CONTAINED HEREIN WAS CURRENT AT THE TIME OF DEVELOPMENT BUT MUST BE REVIEWED AND APPROVED BY THE PRODUCT MANUFACTURER TO BE CONSIDERED ACCURATE.
 6. CONTRACTORS NOTE: FOR PRODUCT AND COMPANY INFORMATION VISIT WWW.CADDDETAILS.COM/INFO AND ENTER REFERENCE NUMBER 558-028

MANUFACTURER INFO:
NATIONAL DIVERSIFIED SALES, INC.
851 N. HARVARD AVE.
LINDSAY, CA. 93247
PHONE: (800) 726.1994
WEB: WWW.NDSPRO.COM

PIPE: #EZ-1501F, 15" MESH WITH 6" CORRUGATED PERFORATED PIPE
PIPE COLOR: BLACK
PIPE INFO: POLYETHYLENE SLOTTED DRAIN PIPE SURROUNDED BY 100% RECYCLED POLYSTYRENE AGGREGATE AND ENCLOSED IN 30-SIEVE POLYETHYLENE GEOTEXTILE MESH

SOIL INFO:
SOIL BACK FILL: TOP SOIL BACK FILL, OR GRAVEL WITH 3" TOP SOIL IN CLAY AREAS

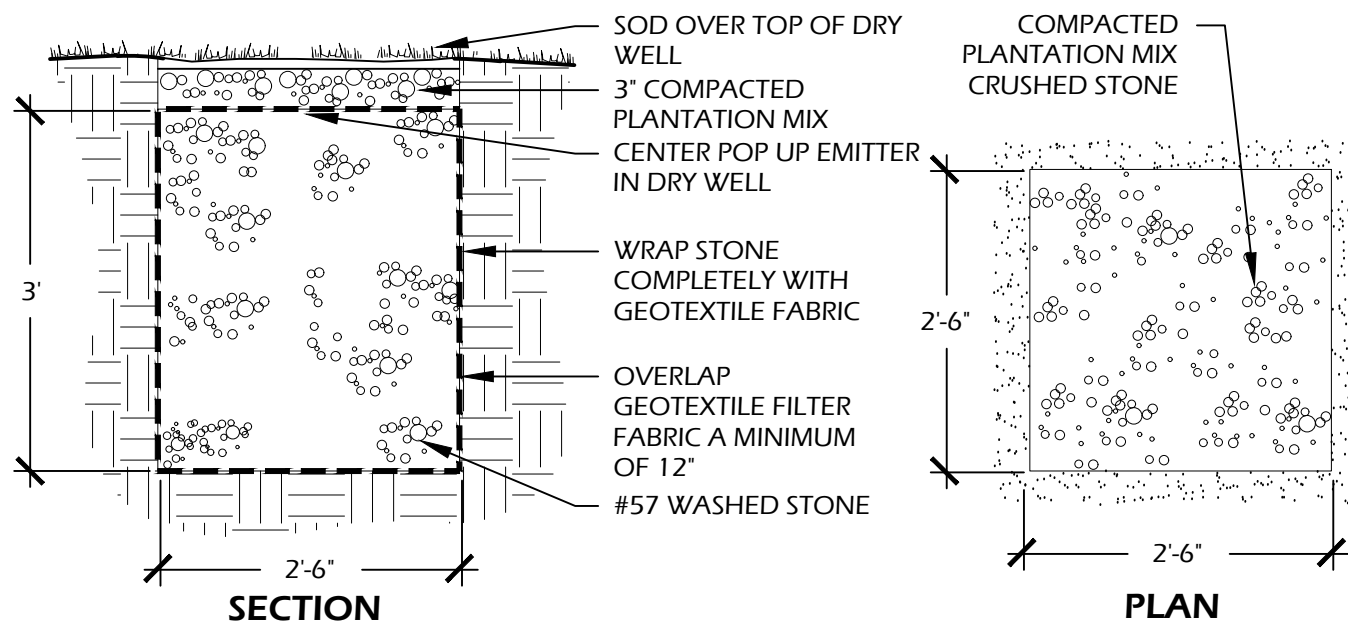
STORAGE AND FLOW INFO:



COUPLING: #6C07, 6" CORRUGATED INTERNAL COUPLING, AS REQUIRED
COUPLING COLOR: BLACK
END CAP: #6C06, 6" CORRUGATED END CAP, AS REQUIRED.
END CAP COLOR: BLACK



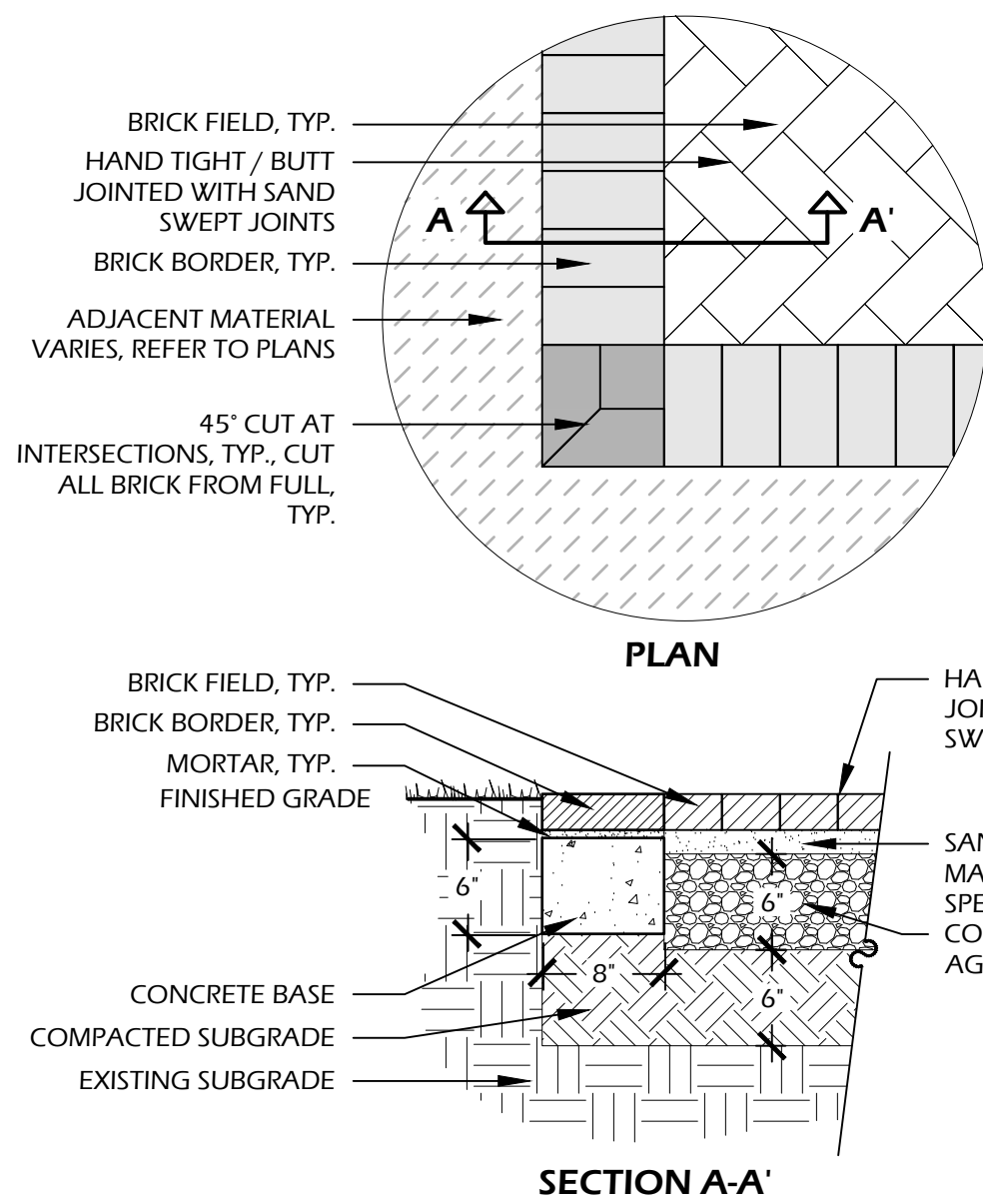
2 // L4 ATRIUM DRAIN TYPE 1
SCALE: N.T.S.



SECTION

PLAN

3 // L4 12" AREA DRAIN TYPE 2 (ATRIUM DRAIN)
SCALE: N.T.S.



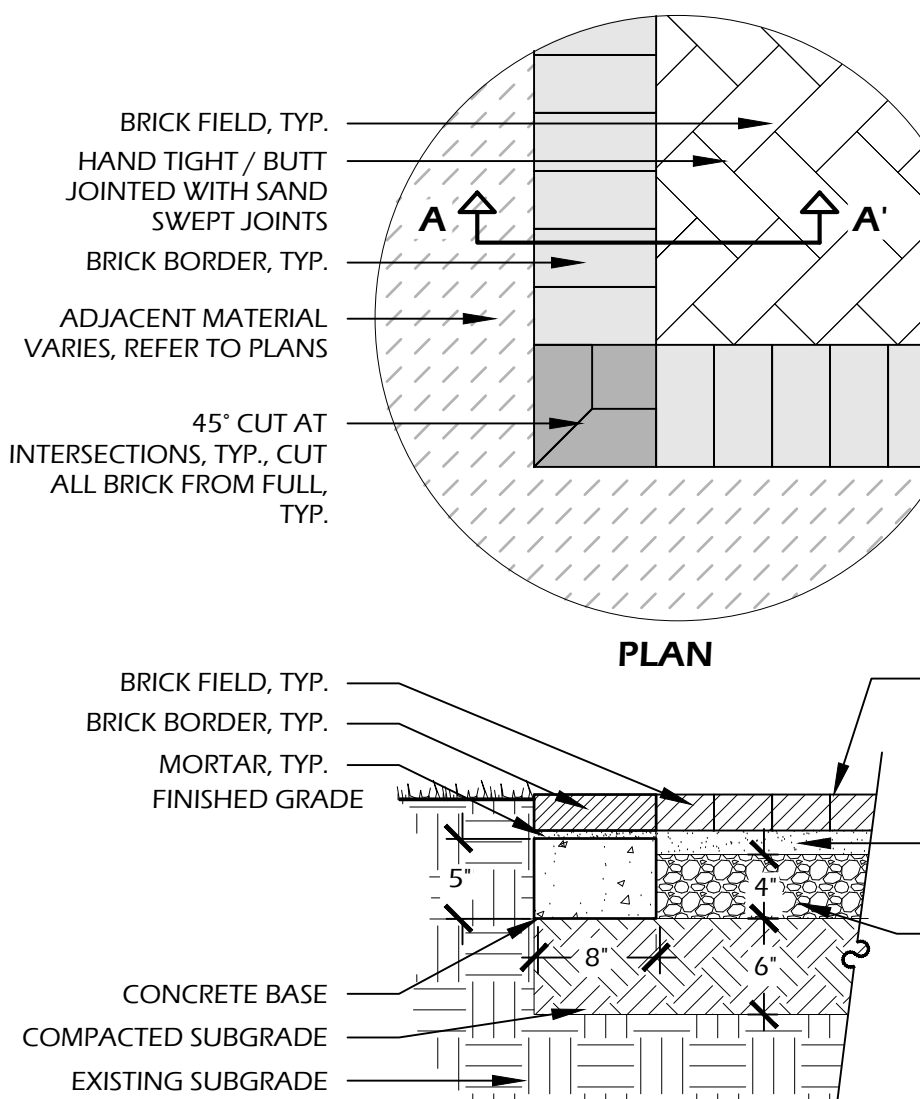
BRICK MANUFACTURER INFORMATION:
MANUFACTURER: PINE HALL BRICK

BRICK: PINE HALL 4"x8" PAVERS
COLOR: COCOA
PATTERN: HERRINGBONE FIELD (REFER TO PLAN, SHEET L2, FOR DIRECTION)
JOINTS: HAND TIGHT / BUTT JOINTED, SAND SWEEP

OTHER INFORMATION:
CONCRETE: 3,000 P.S.I. AT 28 DAYS
SOIL COMPACTION: 95% STANDARD PROCTOR

- NOTES:
1. PROVIDE 1% MIN., 2% MAX. CROSS SLOPE ON ALL PAVED SURFACES FOR POSITIVE DRAINAGE.
 2. REFER TO PLAN (SHEET L2) FOR WIDTHS OF DRIVE AND LOCATION OF BRICK BORDERS.
 3. CONTRACTOR SHALL COORDINATE BORDERS AND PATTERN WITH OWNER'S REPRESENTATIVE PRIOR TO CONSTRUCTION.
 4. UPON REQUEST, CONTRACTOR SHALL PROVIDE 4"x4" PAVING PANELS OF ALTERNATIVE COLORS PRIOR TO CONSTRUCTION FOR APPROVAL BY OWNER OR LANDSCAPE ARCHITECT.

4 // L4 6" FRENCH DRAIN
SCALE: N.T.S.



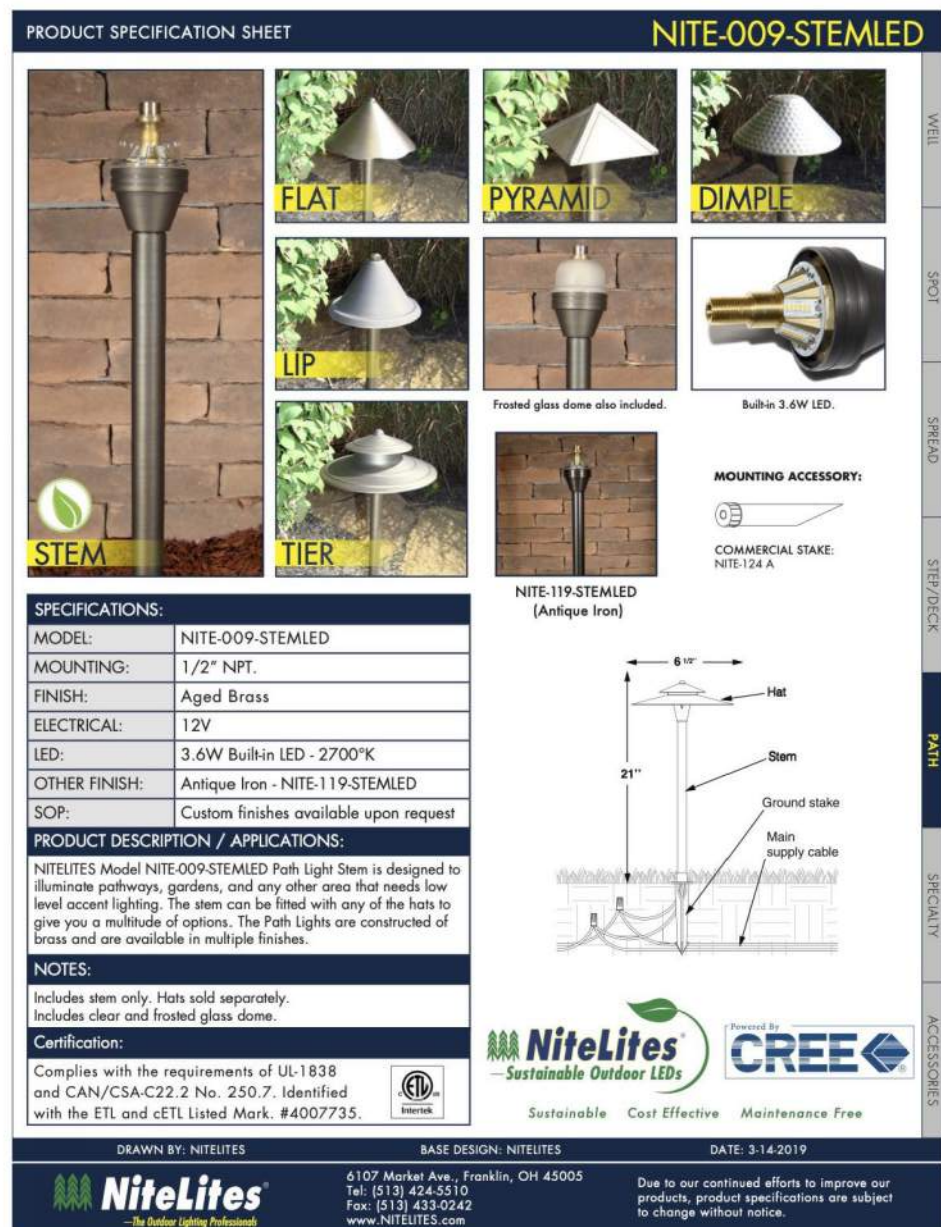
BRICK MANUFACTURER INFORMATION:
MANUFACTURER: PINE HALL BRICK

BRICK: PINE HALL 4"x8" PAVER
COLOR: COCOA
PATTERN: HERRINGBONE FIELD (REFER TO PLAN, SHEET L100, FOR DIRECTION)
JOINTS: HAND TIGHT / BUTT JOINTED, SAND SWEEP

OTHER INFORMATION:
CONCRETE: 3,000 P.S.I. AT 28 DAYS
SOIL COMPACTION: 95% STANDARD PROCTOR

- NOTES:
1. PROVIDE 1% MIN., 2% MAX. CROSS SLOPE ON ALL PAVED SURFACES FOR POSITIVE DRAINAGE.
 2. REFER TO PLAN (SHEET L100) FOR WIDTHS OF WALKS AND LOCATION OF BRICK BORDERS.
 3. CONTRACTOR SHALL COORDINATE BORDERS AND PATTERN WITH OWNER'S REPRESENTATIVE PRIOR TO CONSTRUCTION.
 4. UPON REQUEST, CONTRACTOR SHALL PROVIDE 4"x4" PAVING PANELS OF ALTERNATIVE COLORS PRIOR TO CONSTRUCTION FOR APPROVAL BY OWNER OR LANDSCAPE ARCHITECT.

5 // L4 DRY WELL
SCALE: N.T.S.



MANUFACTURER INFORMATION:
NITELITES
6107 MARKET AVE.
FRANKLIN, OH 45005
PHONE: (513) 424.5510
WEB: WWW.NITELITES.COM

MODEL: NITE-009-STEMLED
FINISH: AGED BRASS
HAT: TIER
WATTAGE: 3.6 WATTS
TEMPERATURE: 2700K
MOUNTING: GROUND STAKE

OR APPROVED EQUAL

6 // L4 BRICK DRIVE
SCALE: 1" = 1'-0"



MANUFACTURER INFORMATION:
NITELITES
6107 MARKET AVE.
FRANKLIN, OH 45005
PHONE: (513) 424.5510
WEB: WWW.NITELITES.COM

MODEL: NITE-025DL DOWN LIGHT
FINISH: AGED BRASS
BULB: NITE-429B7W MR16 LED
WATTAGE: 7 WATTS
TEMPERATURE: 2700K
MOUNTING: TREE MOUNT

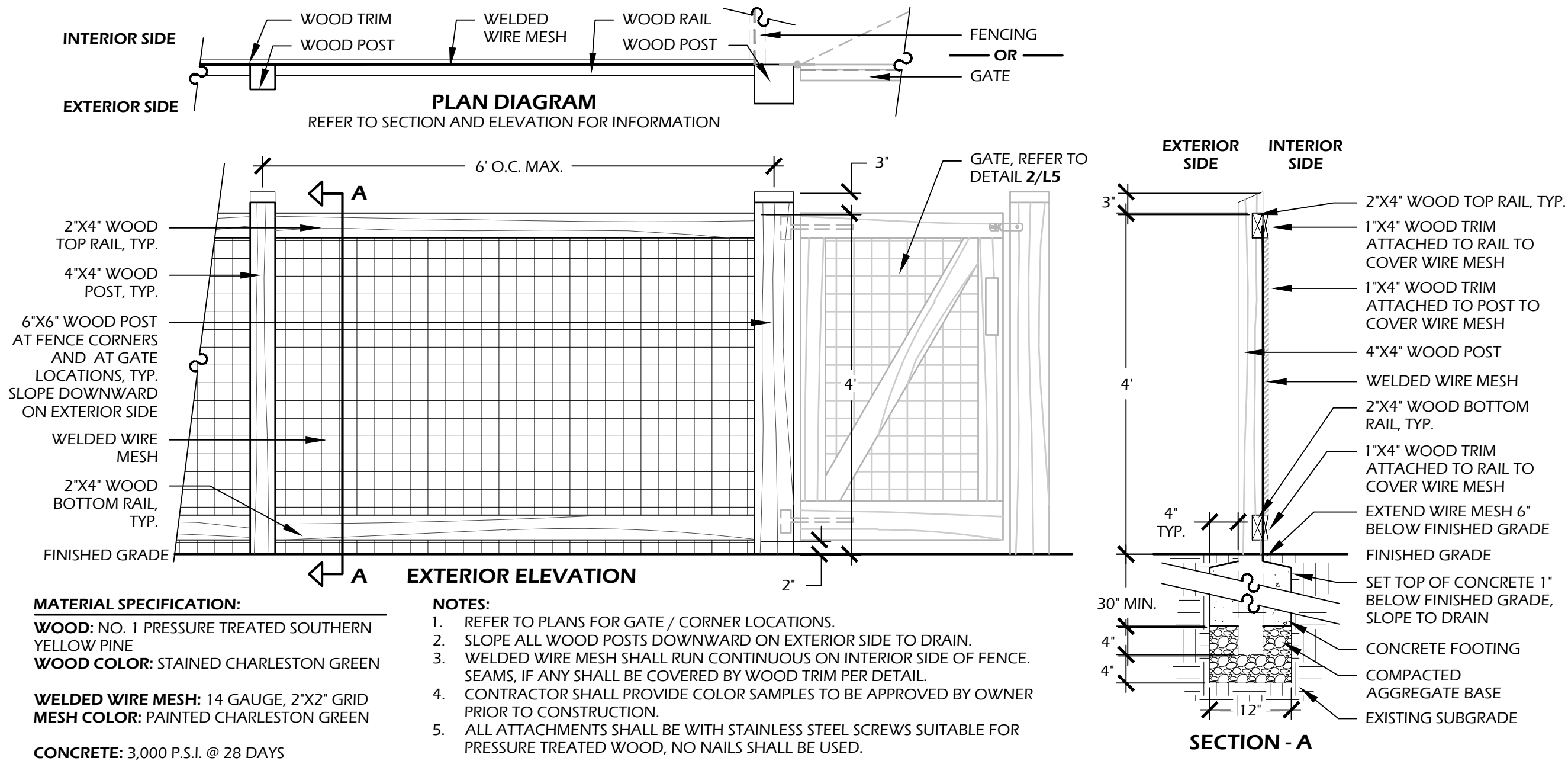
OR APPROVED EQUAL

7 // L4 BRICK WALK
SCALE: 1" = 1'-0"

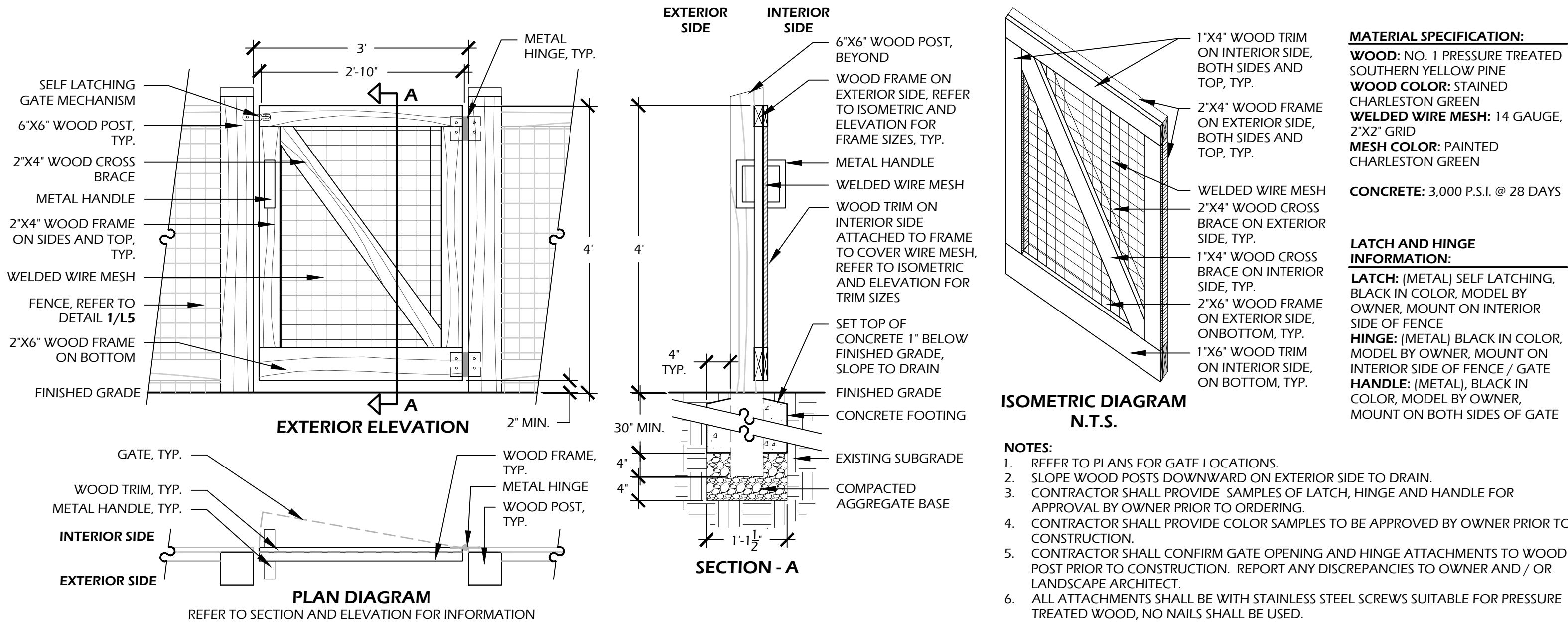
8 // L4 PATH LIGHT
SCALE: N.T.S.

9 // L4 DOWN LIGHT
SCALE: N.T.S.

L4



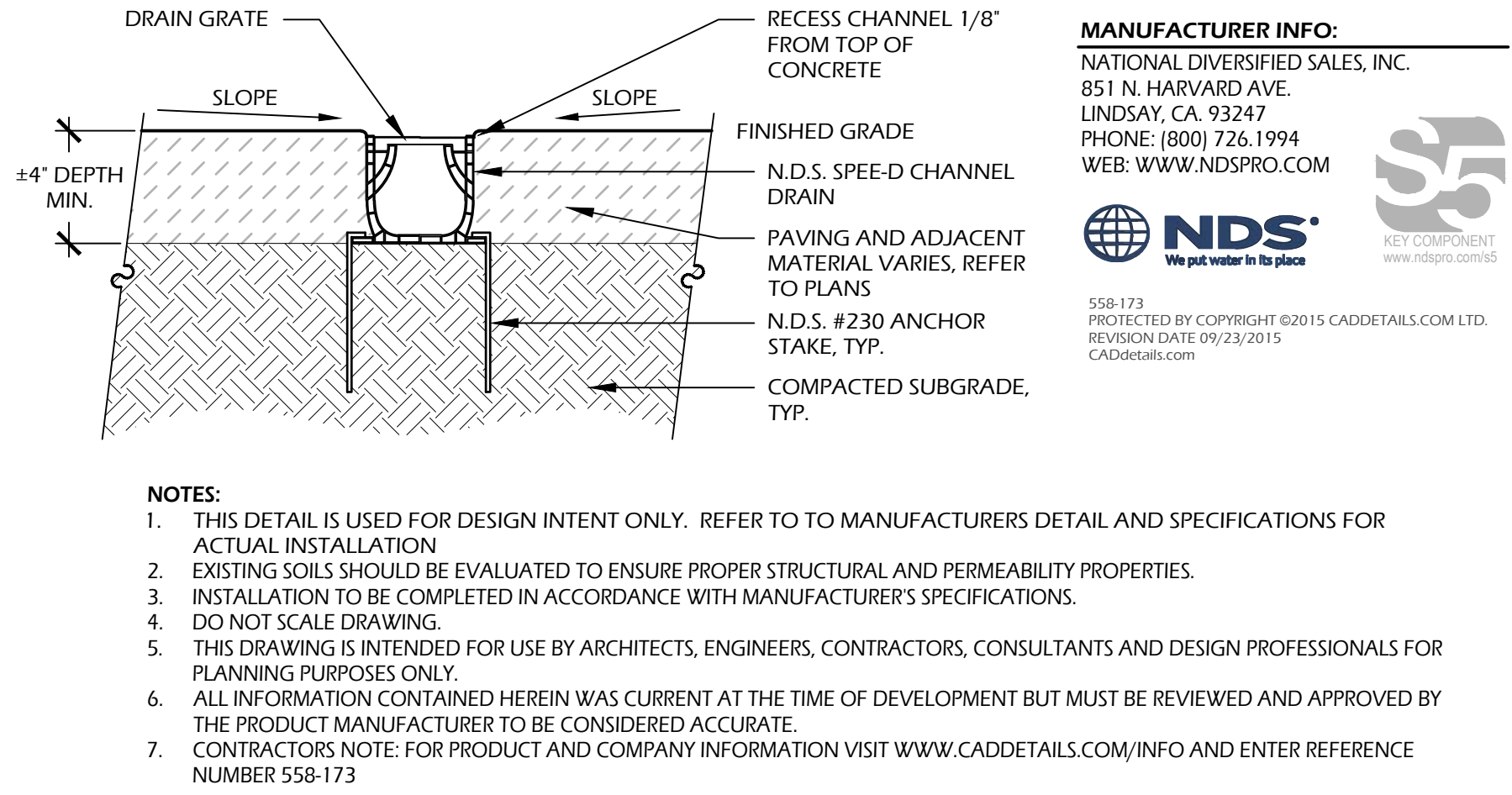
1 // L5 FENCE
SCALE: 3/4" = 1'-0"



2 // L5 GATE
SCALE: 3/4" = 1'-0"



4 // L5 SAVANNAH GRAY BRICK & COCOA 4"x8" BRICK PAVER EXAMPLE
SCALE: N.T.S.



3 // L5 TRENCH DRAIN
SCALE: N.T.S.



© 2023 WJK LTD.
DESIGN: CONCEPTS, DRAWING, SHEETS, LOGOS, SPECIFICATIONS, DETAILS, WRITTEN MATERIAL SHALL NOT BE USED OR REPRODUCED IN WHOLE OR IN PART IN ANY FORM WITHOUT PRIOR WRITTEN CONSENT OF WJK LTD.
THIS SHEET TO SCALE AT: 24"x36"

SITE DEVELOPMENT PLANS
FOR
SEWELL RESIDENCE
TABBY SHELL ROAD / LOT 14 (#26)
TABBY ROADS / BLUFFTON, SOUTH CAROLINA

DATE:	DEC. 01, 2023
PROJECT NO.:	23160.01
DRAWN BY:	MC/ER
CHECKED BY:	BW

FINAL SUBMITTAL
PLAN, NOT FOR
CONSTRUCTION

REVISIONS:

DRAWING TITLE
SITE DETAILS- 02

DRAWING NUMBER
L5