

1 ROOF PLAN  
SCALE: 1/8" = 1'-0"



LEFT BUMPOUT DRIVE-THRU

STORE NUMBER: 2745  
9220 EVAN WAY  
BLUFFTON , SC 29910  
PROJECT TYPE: NEW STORE  
DEAL TYPE: TURNKEY  
CS PROJECT NUMBER: 46506

ARCHITECT OF RECORD:



615 South College St., Suite 1600, Charlotte, NC 28002  
T: 704.525.6350 F: 704.561.8700  
www.littleonline.com  
*This drawing and the design shown are the property of Little Diversified Architectural Consulting. The reproduction, copying or other use of this drawing without their written consent is prohibited and any infringement will be subject to legal action.*  
© Little 2025

CONSULTANT:

DEVELOPER:



BOOS DEVELOPMENT GROUP, INC.  
410 PARK PLACE BLVD. #100  
CLEARWATER, FL 33759  
(727) 669-2915

SEAL:

REVISIONS		
1	DRB REVISION COMMENTS	07/15/2024
2	DRB REVISION COMMENTS	11/22/2024
3	CVS COMMENTS	12/12/2024

CVS SPM: XXX  
DRAWING BY: RW  
DATE: 12/12/2024  
JOB NUMBER: 121-19384-00  
TITLE:

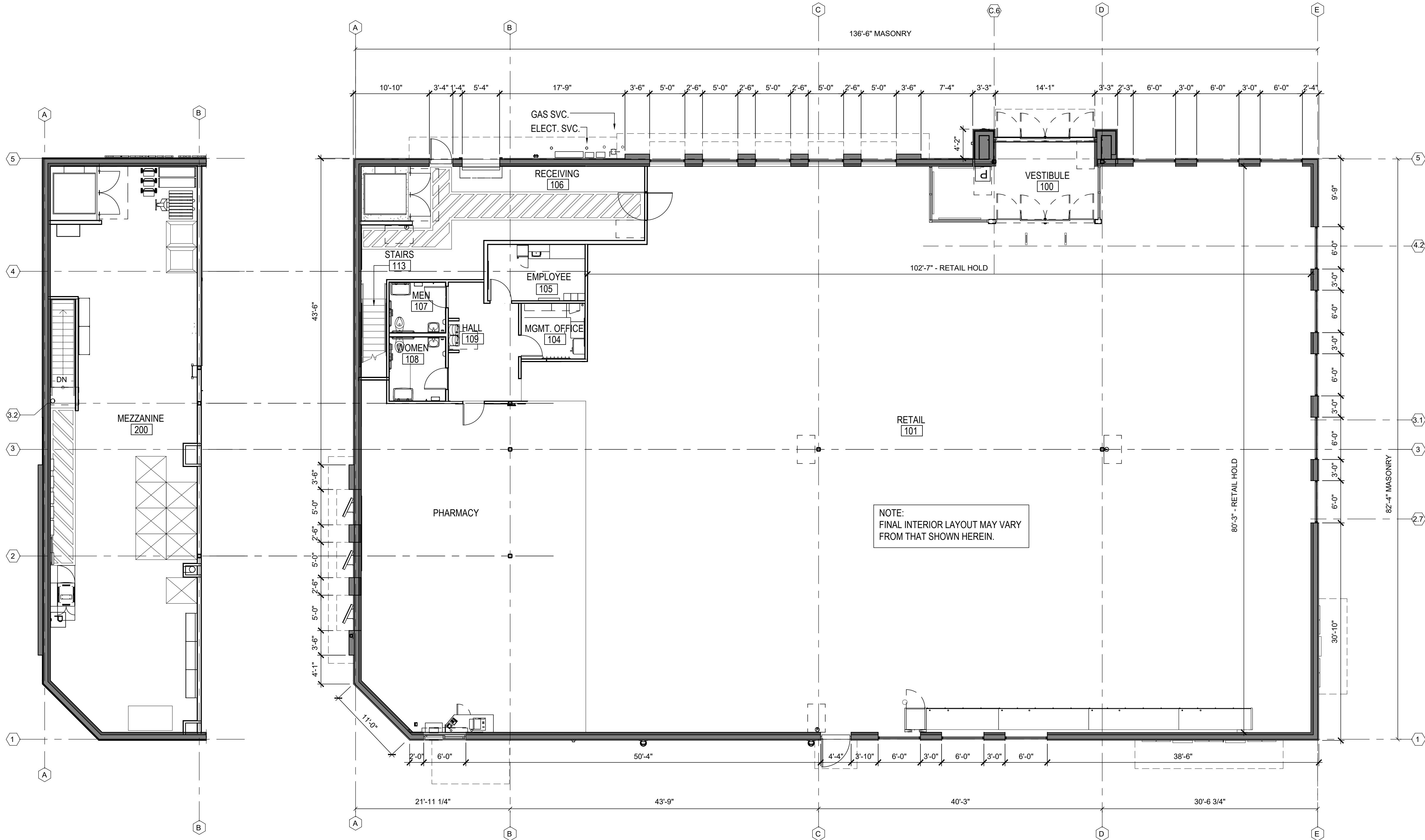
ROOF PLAN

SHEET NUMBER:

A2

COMMENTS:

NOT RELEASED FOR CONSTRUCTION



2 FLOOR PLAN - MEZZANINE  
SCALE: 1/8" = 1'-0"

1 FLOOR PLAN - MAIN LEVEL  
SCALE: 1/8" = 1'-0"



LEFT BUMPOUT DRIVE-THRU

STORE NUMBER: 2745

9220 EVAN WAY  
BLUFFTON, SC 29910

PROJECT TYPE: NEW STORE  
DEAL TYPE: TURNKEY

CS PROJECT NUMBER: 46506

ARCHITECT OF RECORD:



615 South College St., Suite 1600, Charlotte, NC 28202  
T: 704.525.6350 F: 704.561.8700

www.littleonline.com

This drawing and the design shown are the property of Little Diversified Architectural Consulting. The reproduction, copying or other use of this drawing without their written consent is prohibited and any infringement will be subject to legal action.  
© Little 2024

CONSULTANT:

DEVELOPER:



BOOS DEVELOPMENT GROUP, INC.  
410 PARK PLACE BLVD. #100  
CLEARWATER, FL 33759  
(727) 669-2915

SEAL:

REVISIONS		
1	DRB REVISION COMMENTS	07/15/2024
2	DRB REVISION COMMENTS	11/22/2024
3	CVS COMMENTS	12/12/2024

CVS SPM: XXX

DRAWING BY: RW

DATE: 12/12/2024

JOB NUMBER: 121-19384-00

TITLE:

FLOOR PLAN

SHEET NUMBER:

A1

COMMENTS:

NOT RELEASED FOR CONSTRUCTION