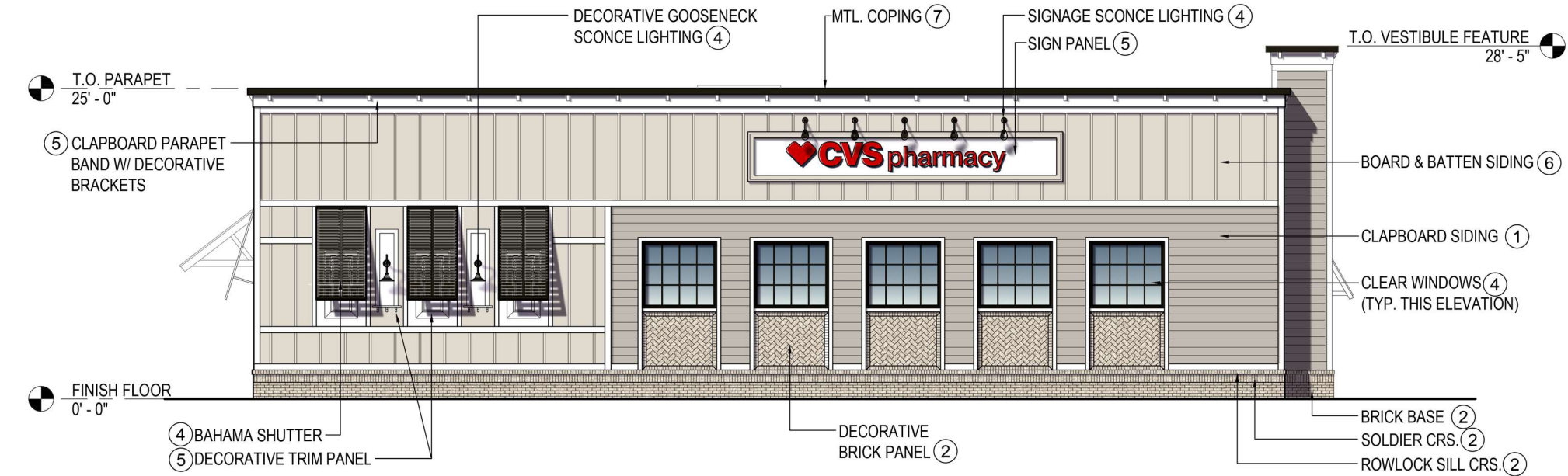


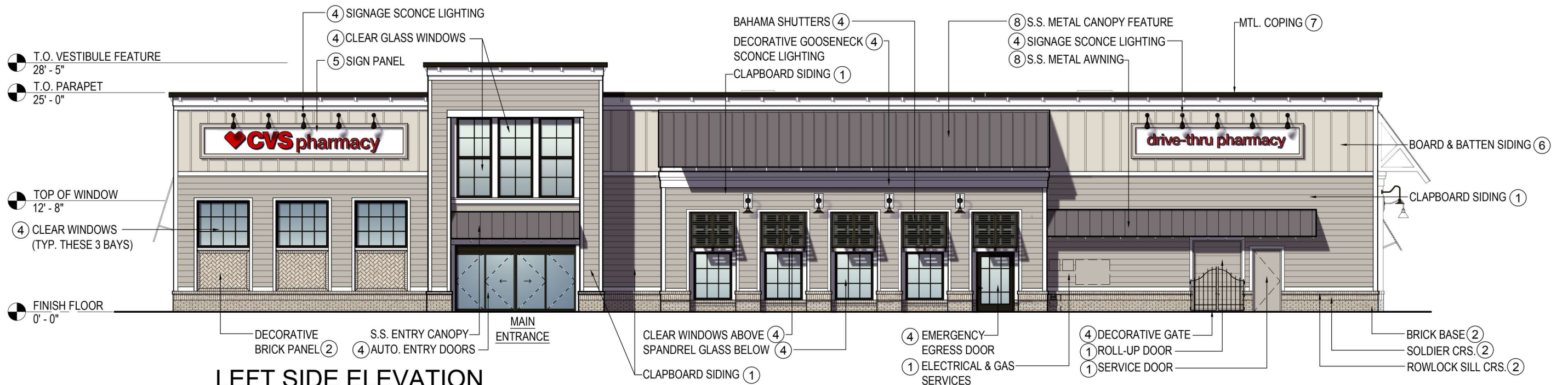
CVS #2745 - BLUFFTON, SC

US HWY 170 (OKATIE HWY) & US HWY 46 (MAY RIVER ROAD)
FEBRUARY 26, 2025



FRONT SIDE ELEVATION
(MAY RIVER CROSSING)

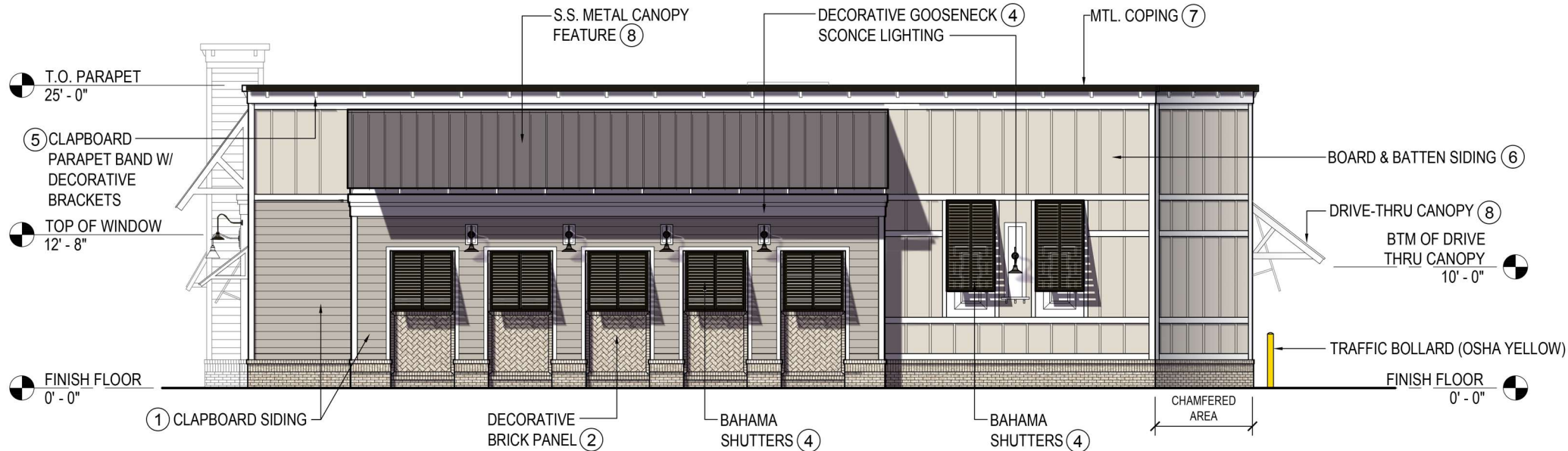
EXTERIOR FINISH SCHEDULE	
TAG	MATERIAL / DESCRIPTION
(1)	FIBER CEMENT LAP: ALLURA "AGREEABLE GREY"
(2)	BRICK: PINEHALL "OYSTER PEARL"
(3)	FIBER CEMENT PANEL: ALLURA "ALLABASTER"
(4)	WINDOW / DOOR FRAMING / AWNINGS: "DARK BRONZE"
(5)	TRIM/ DOOR TRIM: BENJAMIN MOORE "OXFORD WHITE"
(6)	ALLURA FIBER CEMENT BOARD AND BATTEN: "CREAMY"
(7)	METAL COPING: ATAS "DARK BRONZE"
(8)	S.S. METAL: ATAS "SLATE GREY"



LEFT SIDE ELEVATION
(EVAN WAY)

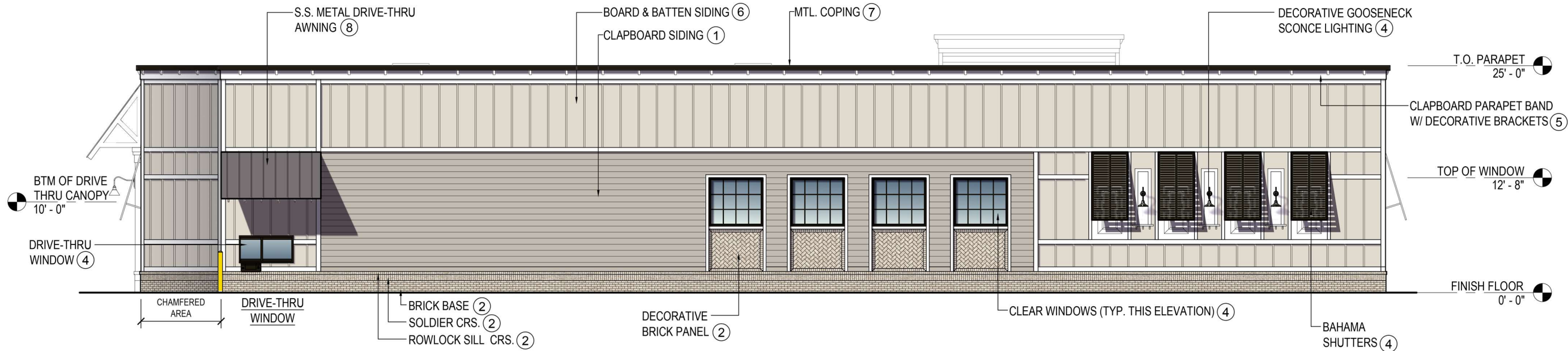
CVS #2745 - BLUFFTON, SC

US HWY 170 (OKATIE HWY) & US HWY 46 (MAY RIVER ROAD)
FEBRUARY 26, 2025



REAR ELEVATION
(HWY 170)

EXTERIOR FINISH SCHEDULE	
TAG	MATERIAL / DESCRIPTION
①	FIBER CEMENT LAP: ALLURA "AGREEABLE GREY"
②	BRICK: PINEHALL "OYSTER PEARL"
③	FIBER CEMENT PANEL: ALLURA "ALLABASTER"
④	WINDOW / DOOR FRAMING / AWNINGS: "DARK BRONZE"
⑤	TRIM/ DOOR TRIM: BENJAMIN MOORE "OXFORD WHITE"
⑥	ALLURA FIBER CEMENT BOARD AND BATTEN: "CREAMY"
⑦	METAL COPING: ATAS "DARK BRONZE"
⑧	S.S. METAL: ATAS "SLATE GREY"

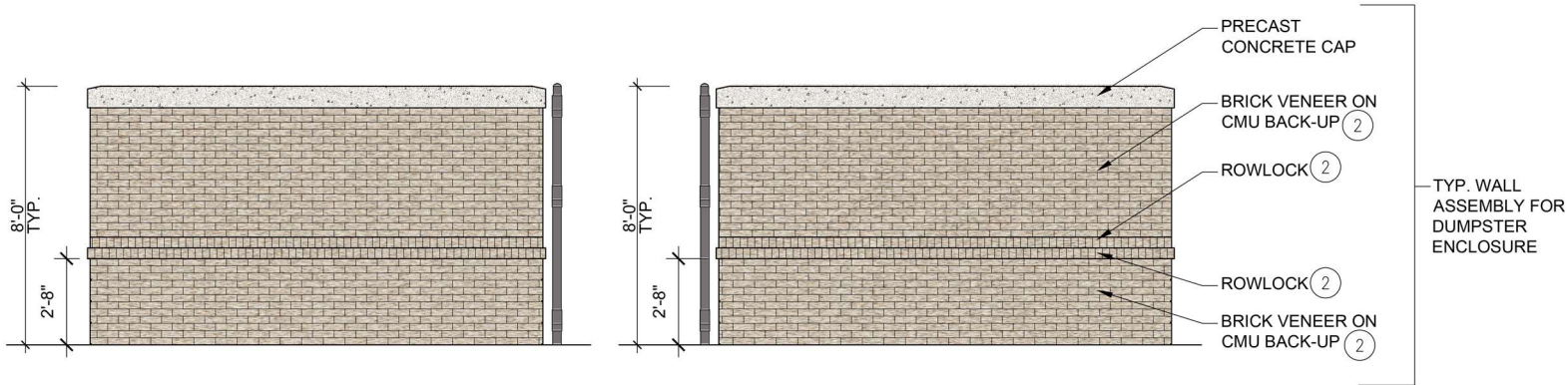


RIGHT SIDE ELEVATION
(DRIVE-THRU)

CVS #2745 - BLUFFTON, SC

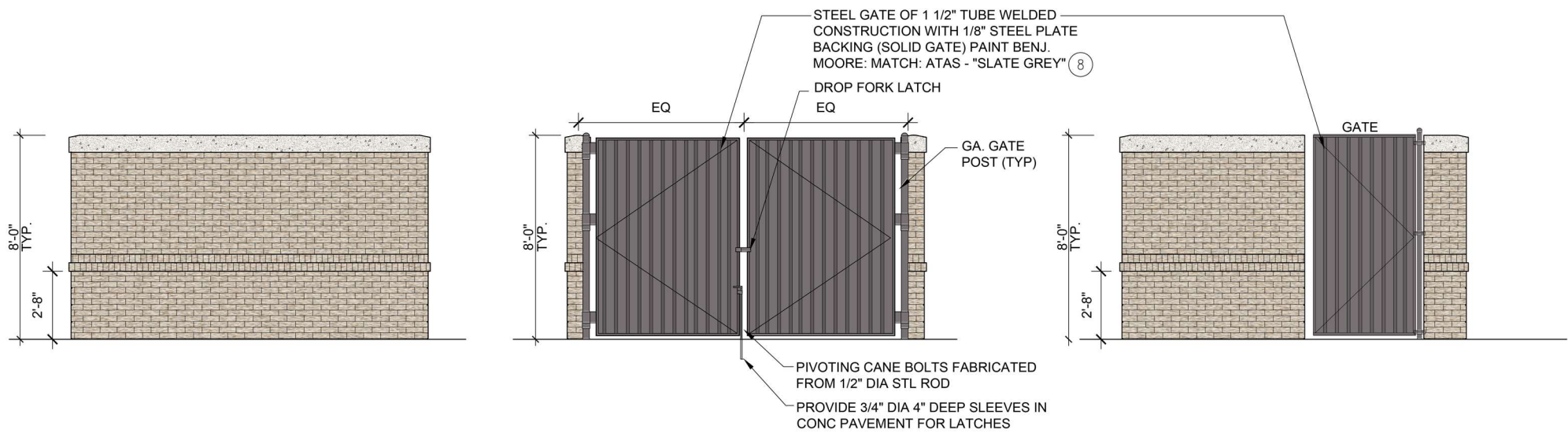
US HWY 170 (OKATIE HWY) & US HWY 46 (MAY RIVER ROAD)
FEBRUARY 26, 2025

EXTERIOR FINISH SCHEDULE	
TAG	MATERIAL / DESCRIPTION
①	FIBER CEMENT LAP: ALLURA "AGREEABLE GREY"
②	BRICK: PINEHALL "OYSTER PEARL"
③	FIBER CEMENT PANEL: ALLURA "ALLABASTER"
④	WINDOW / DOOR FRAMING / AWNINGS: "DARK BRONZE"
⑤	TRIM/ DOOR TRIM: BENJAMIN MOORE "OXFORD WHITE"
⑥	ALLURA FIBER CEMENT BOARD AND BATTEN: "CREAMY"
⑦	METAL COPING: ATAS "DARK BRONZE"
⑧	S.S. METAL: ATAS "SLATE GREY"



4 LEFT SIDE ELEVATION
SCALE: 1/2" = 1' - 0"

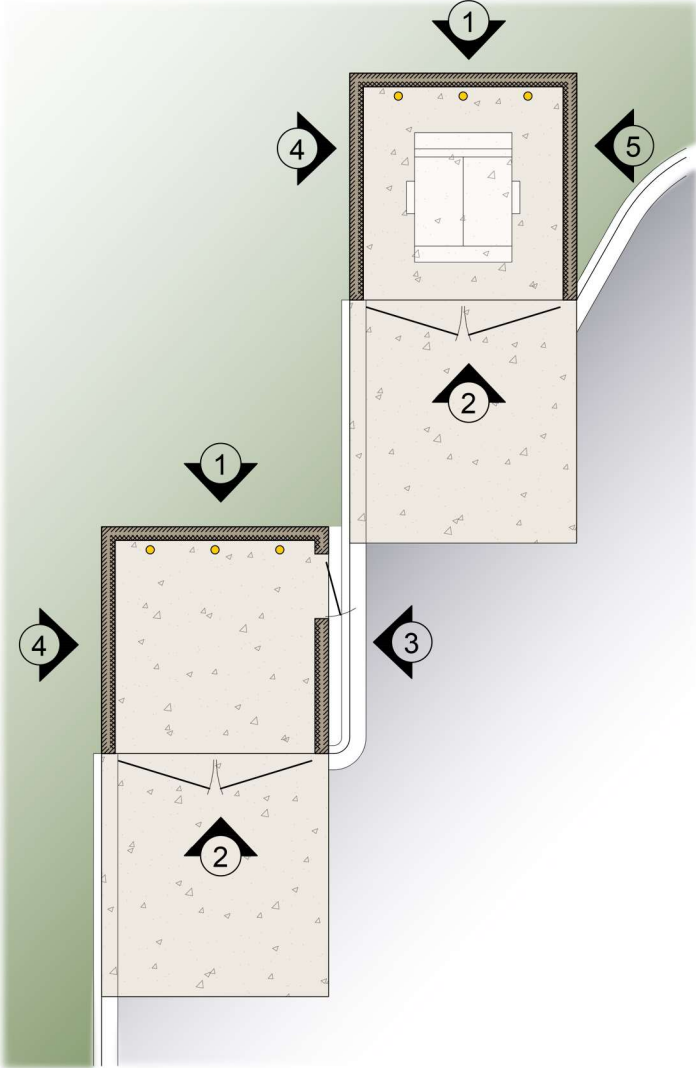
5 RIGHT SIDE ELEVATION
SCALE: 1/2" = 1' - 0"



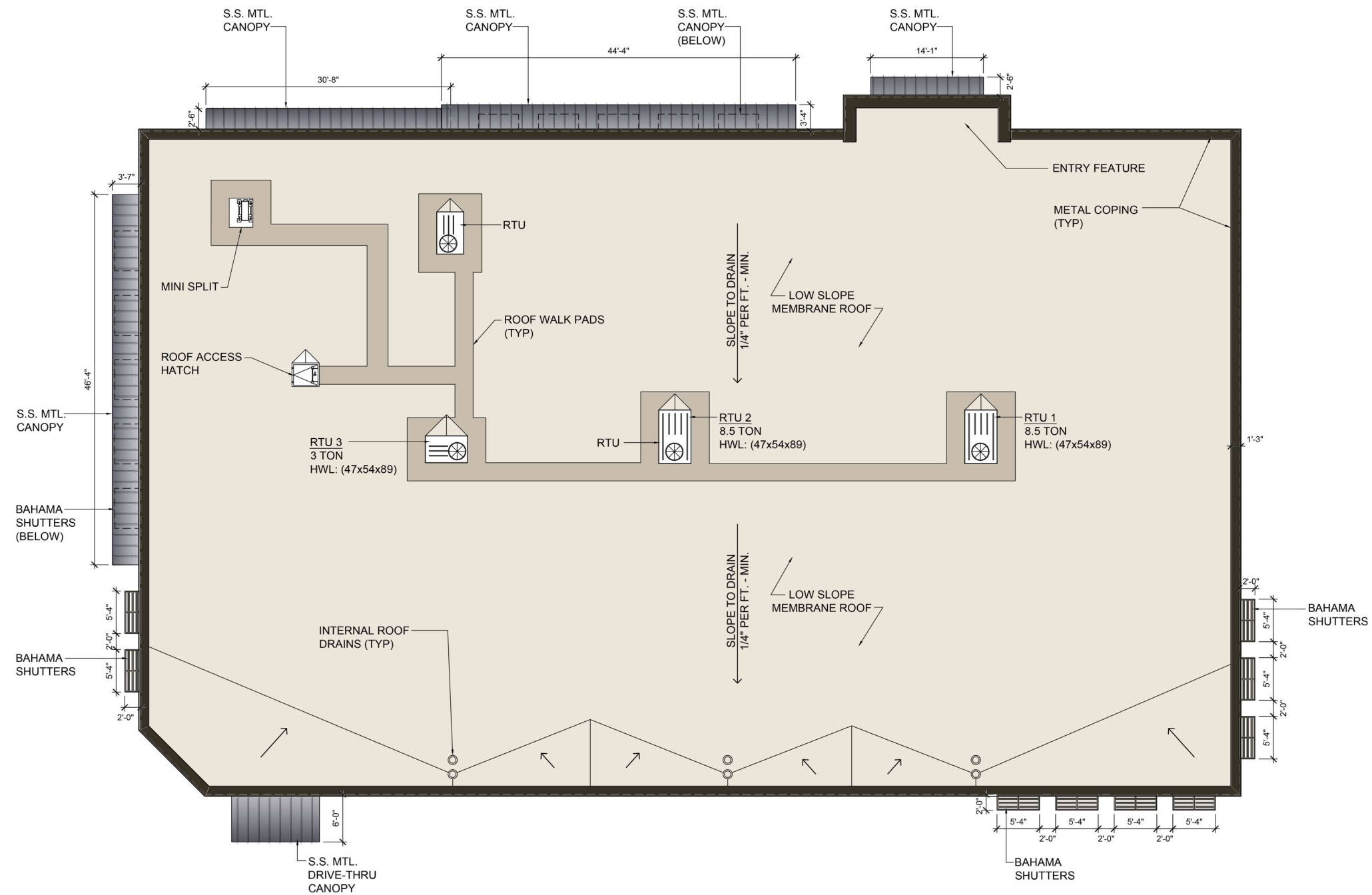
1 REAR ELEVATION
SCALE: 1/2" = 1' - 0"

2 FRONT ELEVATION
SCALE: 1/2" = 1' - 0"

3 RIGHT SIDE ELEVATION
SCALE: 1/2" = 1' - 0"



DUMPSTER KEY PLAN



ROOF PLAN

ROOF PLAN

SCALE: 1/8" = 1'-0"

CVS #2745 - BLUFFTON, SC

US HWY 170 (OKATIE HWY) & US HWY 46 (MAY RIVER ROAD)
FEBRUARY 26, 2025



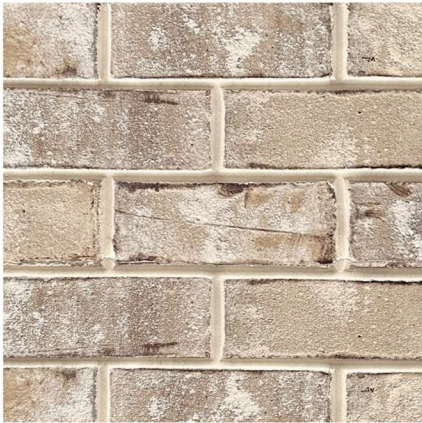
CVS #2745 - BLUFFTON, SC

US HWY 170 (OKATIE HWY) & US HWY 46 (MAY RIVER ROAD)
FEBRUARY 26, 2025



CVS #2745 - BLUFFTON, SC

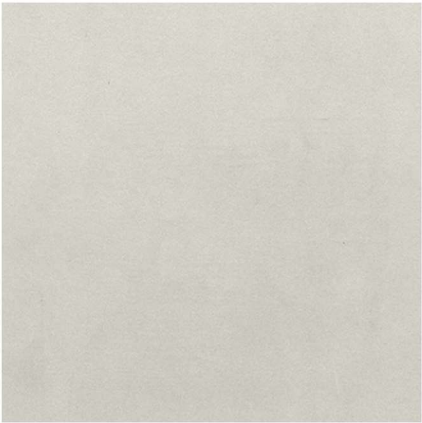
US HWY 170 (OKATIE HWY) & US HWY 46 (MAY RIVER ROAD)
FEBRUARY 26, 2025



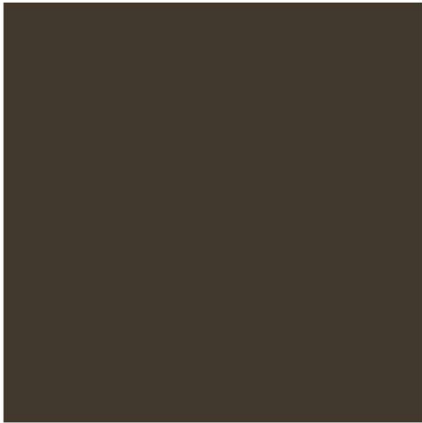
PINEHALL BRICK
"OYSTER PEARL"



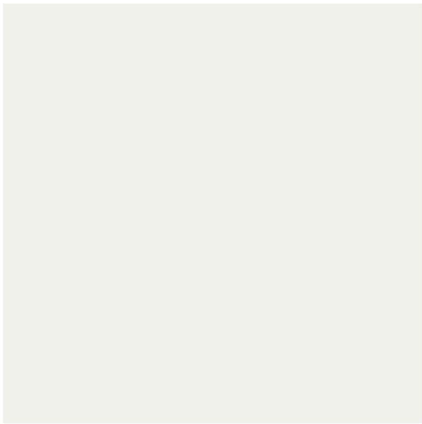
ALLURA FIBER CEMENT
TRADITIONAL LAP SIDING
"AGREEABLE GREY"



ALLURE FIBER CEMENT
PANEL (SMOOTH)
"ALABASTER"



ALUMINUM STOREFRONT AND
WINDOW MULLIONS
"DARK BRONZE"



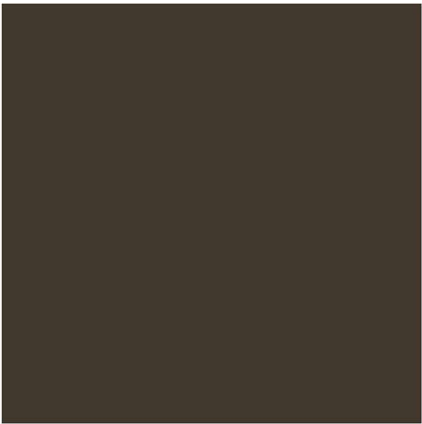
TRIM

BENJAMIN MOORE
"OXFORD WHITE"



BOARD & BATTEN

ALLURA FIBER CEMENT
"CREAMY"



COPING

ATAS
"DARK BRONZE"



S.S. METAL

ATAS
"SLATE GREY"

EXTERIOR FINISH SCHEDULE	
TAG	MATERIAL / DESCRIPTION
①	FIBER CEMENT LAP: ALLURA "AGREEABLE GREY"
②	BRICK: PINEHALL "OYSTER PEARL"
③	FIBER CEMENT PANEL: ALLURA "ALABASTER"
④	WINDOW / DOOR FRAMING / AWNINGS: "DARK BRONZE"
⑤	TRIM/ DOOR TRIM: BENJAMIN MOORE "OXFORD WHITE"
⑥	ALLURA FIBER CEMENT BOARD AND BATTEN: "CREAMY"
⑦	METAL COPING: ATAS "DARK BRONZE"
⑧	S.S. METAL: ATAS "SLATE GREY"