
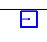
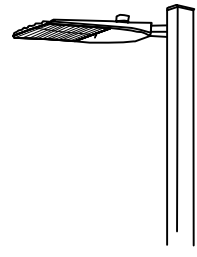
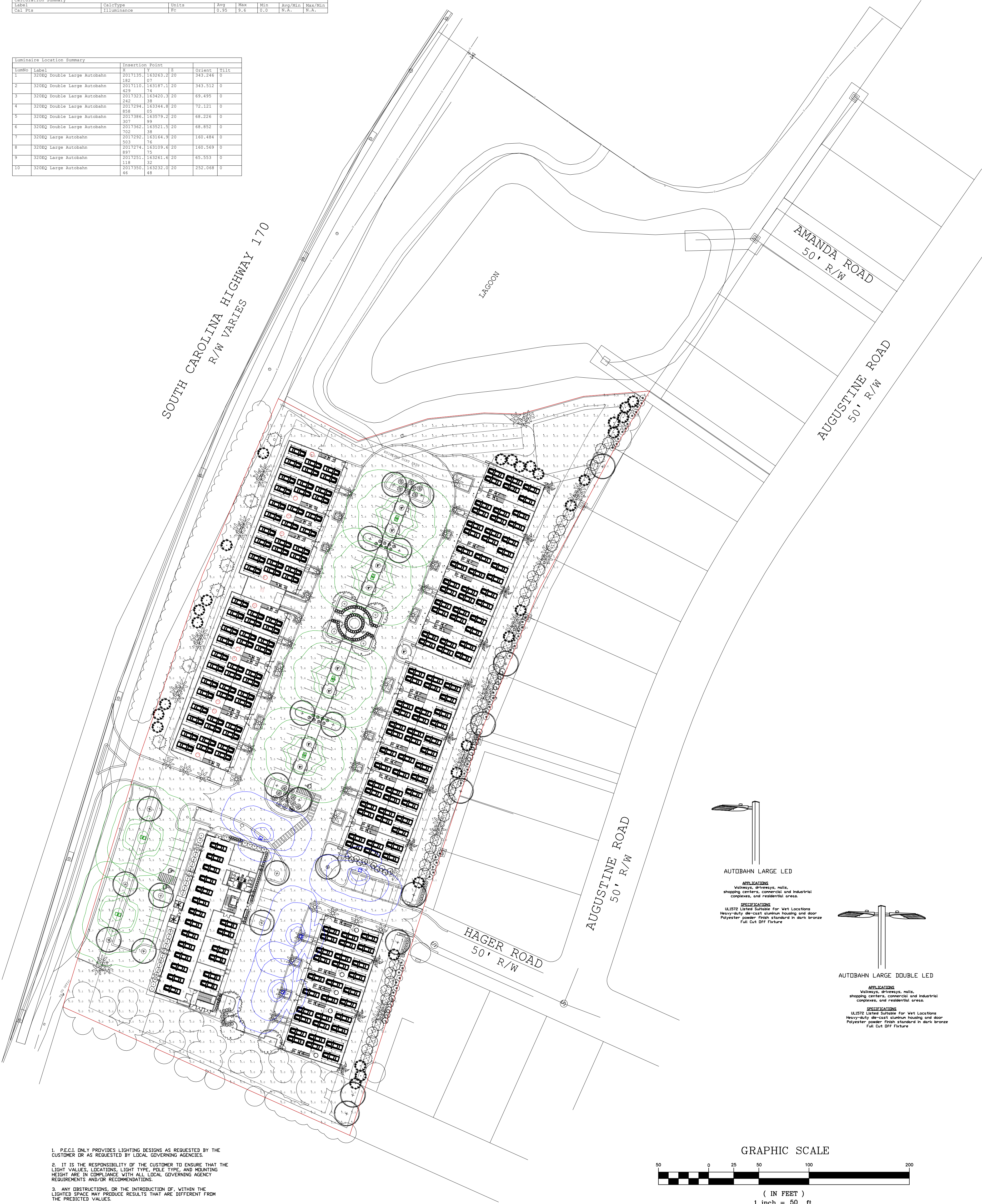


NAME: X:\MAP24\JOBS\230700L-1

Luminaire Schedule						
Symbol	Qty	Label	Arrangement	Description	Tag	
	6	3208Q Double Large Autobahn	Back-Back	3208Q LED on 25' Fiberglass Pole, 20' Mounting Height. Full cut off fixture.		
	4	3208Q Large Autobahn	Single	3208Q LED on 25' Fiberglass Pole, 20' Mounting Height. Full cut off fixture		
					LED	Luminaire Lumens
					0.720	19808
						Luminaire Watts
						165
						Total Watts
						1980

Calculation Summary						
Label	CalcType	Units	Avg	Max	Min	Avg/Min
Calc. Pts	Illuminance	FC	0.35	0.4	0.0	N/A

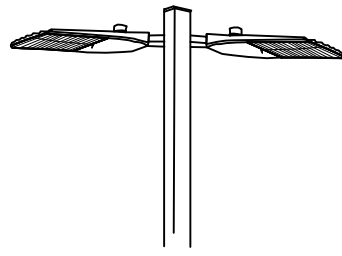
Luminaire Location Summary						
LumNo	Label	Insertion Point X	Y	E	orient	tilt
1	3208Q Double Large Autobahn	2017135	163263.2	20	343.246	0
		189	07			
2	3208Q Double Large Autobahn	2017110	163187.1	20	343.532	0
		429	74			
3	3208Q Double Large Autobahn	2017033	163420.3	20	69.495	0
		242	38			
4	3208Q Double Large Autobahn	2017094	163344.6	20	72.121	0
		858	05			
5	3208Q Double Large Autobahn	2017086	163579.2	20	68.224	0
		307	99			
6	3208Q Double Large Autobahn	2017062	163521.5	20	68.852	0
		702	38			
7	3208Q Large Autobahn	2017292	163164.9	20	160.484	0
		503	76			
8	3208Q Large Autobahn	2017274	163109.6	20	160.569	0
		897	75			
9	3208Q Large Autobahn	2017251	163261.6	20	65.553	0
		118	35			
10	3208Q Large Autobahn	2017350	163232.0	20	252.068	0
		46	48			



AUTOBAHN LARGE LED

**APPLICATIONS**  
Valeways, driveways, malls, shopping centers, commercial and industrial complexes, and residential areas.

**DESCRIPTION**  
UL187E Listed Suitable for Wet Locations Heavy-duty die-cast aluminum housing and door Polyester powder finish standard in dark bronze Full Cut Off Fixture



AUTOBAHN LARGE DOUBLE LED

**APPLICATIONS**  
Valeways, driveways, malls, shopping centers, commercial and industrial complexes, and residential areas.

**DESCRIPTION**  
UL187E Listed Suitable for Wet Locations Heavy-duty die-cast aluminum housing and door Polyester powder finish standard in dark bronze Full Cut Off Fixture

GRAPHIC SCALE



( IN FEET )  
1 inch = 50 ft.

1. P.E.C. ONLY PROVIDES LIGHTING DESIGNS AS REQUESTED BY THE CUSTOMER OR AS REQUESTED BY LOCAL GOVERNING AGENCIES.

2. IT IS THE RESPONSIBILITY OF THE CUSTOMER TO ENSURE THAT THE LIGHT VALUES, LOCATIONS, LIGHT TYPE, POLE TYPE, AND MOUNTING HEIGHT ARE IN COMPLIANCE WITH ALL LOCAL GOVERNING AGENCY REQUIREMENTS AND/OR RECOMMENDATIONS.

3. ANY OBSTRUCTIONS OR THE INTRODUCTION OF, WITHIN THE LIGHTED SPACE MAY PRODUCE RESULTS THAT ARE DIFFERENT FROM THE PREDICTED VALUES.

THESE PLANS ARE FOR THE APPROVAL AND CONSTRUCTION OF PALMETTO ELECTRIC COOPERATIVE, INC. OUTDOOR LIGHTS ONLY.

COPYRIGHT: PALMETTO ELECTRIC COOPERATIVE, INC. ALL RIGHTS RESERVED. THESE PAGES ARE PROTECTED BY UNITED STATES AND INTERNATIONAL LAWS. UNAUTHORIZED COPYING, DISTRIBUTION, ALTERATION OR USE BY ANY MEANS IS STRICTLY

PRIMARY PROPOSAL FOR  
CAR VILLAGE  
HWY 170/HAGER RD  
TOWN OF BLUFFTON  
BEAUFORT COUNTY, SOUTH CAROLINA

DESIGNED BY: RST  
CHECKED BY: WL  
DRAWN BY: RST  
DATE: 1/9/24  
SCALE: 1" = 50'  
PROJECT NO.: 230700L-1  
SHEET NO.: 00000000  
1 OF 1

REMARKS:



PALMETTO ELECTRIC COOPERATIVE, INC.  
1 COOPERATIVE WAY  
HARDEEVILLE, SOUTH CAROLINA 29927  
(843) 208-5551 / FAX (843) 208-5532

**BALTIMORE**



**ATTACHMENT 3**  
**LARGE AUTOBAHN**



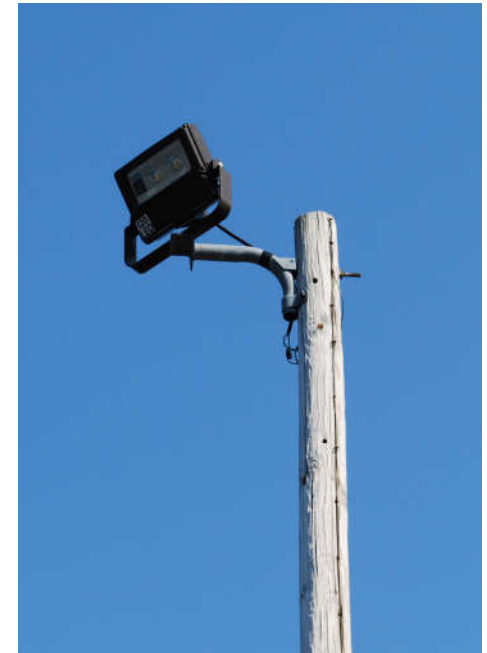
**HAGERSTOWN**



**SALEM**



**SMALL AUTOBAHN**



**FLOOD**

## ATTACHMENT 3

### Parking Lots:

Autobahns provide the best lighting levels and value for you and your customers. (Kitties Crossing)

### Neighborhood Roadways & Parking Lots:

In residential areas, the Baltimore (Westbury Park), Salem (Hampton Lake) or Hagerstown (Baynard Park) is recommended.

### Backyards & Fields:

A Standard option (not shown) is offered for most yards. Flood Lights may be used for larger yards and fields. *These lights are only available in areas without community or government restrictions.*

### Approval Forms:

Packets are generated by PECI, for both the Customer and local governing bodies, and contain approval forms. It is the customer's responsibility to submit the package to the appropriate governing body for approval **AND** to see that PECI receives the signed approval from the governing body.

### Contracts:

Contracts are generated after signed approval forms are received by PECI. The original contract, signed by the customer, must be returned to PECI in order for staking, scheduling and construction of the lighting project to begin. Faxed or emailed contracts **CANNOT** be accepted. Material will **NOT** be ordered, and work will **NOT** begin until PECI has a signed contract. Material delivery may take up to 14 weeks.

### Aid To Construct:

Additional costs may include road bores, and/or additional PECI equipment, i.e. transformers, pedestals. This fee, if needed, must be paid in full prior to any construction.

### Installation Charges:

Each pole location includes 100' of wire from any PECI energy source at no additional charge to the customer by use of mechanical trenching methods. Any footage over 100' will be charged a fee per foot.

All light wire will be in schedule 40 conduit and must be buried at a minimum depth of 36". For parking lot or road crossings, sleeves must be schedule 40 conduit at a minimum depth of 36" and provided by the customer.

### Poles:

PECI offers wood, fiberglass or aluminum poles at various heights for each option. Poles are set directly into soil, or on bases set directly into soil, at depths specified by manufacturer.

### Operation:

All PECI lights are operated by a photocell, which turns the lights on at dusk and off at dawn.

### Landscaping & Irrigation:

Any landscaping that must be removed for installation of the lights is the responsibility of the customer to remove and re-install as necessary. It is also the responsibility of the customer to locate irrigation pipe and any other customer owned buried equipment to avoid conflicts with the new installation.

### Light Data:

Any data needed for the lights, i.e. costs, wattages, IES files, etc., may be obtained by calling any of the contacts listed at the New River Engineering office.

### Contacts:

Roxane Tindal	843-208-5511
Katie Mock	843-208-5510

Revised 2/13/2019 RJC



# LED OUTDOOR LIGHTING PROGRAM

