


[illegible]

Statistics				
Description	Symbol	Avg	Max	Min
Parking	+	1.9 fc	6.9 fc	0.1 fc
ATM	+	4.4 fc	10.6 fc	1.2 fc

Schedule								
Label	QTY	Manufacturer	Catalog	Description	Number Lamps	Lamp Output	LLF	Input Power
SL-1	7	GE LIGHTING SOLUTIONS	EACL01_C3AW740____ ---	EACL AREA LIGHT	1	7600	1	55
L7	6	FORMA LIGHTING/ILF Illumination	3499-K30D55/5811-1SA20L8040W	Mini Bullet Recessed - 3000K - 55	1	995	1	20.7
L-4	18	COOPER LIGHTING SOLUTIONS - LUMIERE (FORMERLY EATON)	9004-W1-R(W, RJ)-LED4080-W-WT-L1-UNV	LUMIERE LANTERRA 9004 LED WALL LUMINAIRE, RECESSED LENS, WIDE FLOOD OPTIC, WHITE HOUSING.	1	1082	1	9.8
21B	1	COOPER LIGHTING SOLUTIONS - LUMARK (FORMERLY EATON)	XTOR6BRL-Y	CROSSSTOUR WALL MOUNT LED WITH REFRACTIVE LENS	1	5817	1	58
L-6	4	GE LIGHTING SOLUTIONS	ECL501_T5SM740____ -120-277V	EVOLVE CANOPY LED SOFFIT - ECL501	1	3700	1	29
NOTE: ALL SITE AND BUILDING LIGHT FIXTURES PROPOSED ON THIS PROJECT ARE DESIGNED AS FULL CUTOFF CLASSIFICATION WITH ZERO UP LIGHT COMPONENTS								

NOTE: ALL SITE AND BUILDING LIGHT FIXTURES PROPOSED ON THIS PROJECT ARE DESIGNED AS FULL CUTOFF CLASSIFICATION WITH ZERO UP LIGHT COMPONENTS


ILLUMINATION®

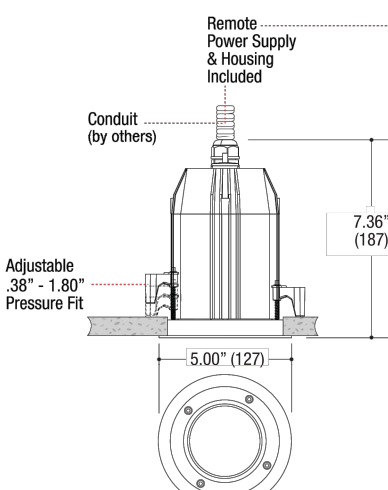
BULLET
 OUTDOOR RECESSED FIXED DOWNLIGHT

WET LOCATION - IP66 LED

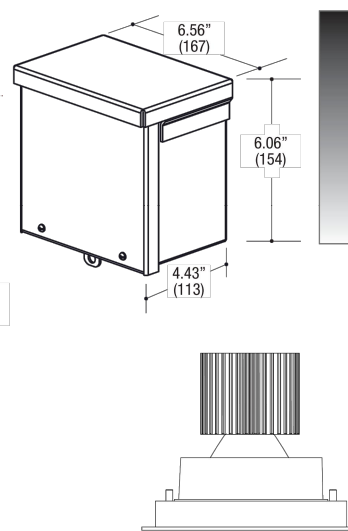
PROJECT

TYPE

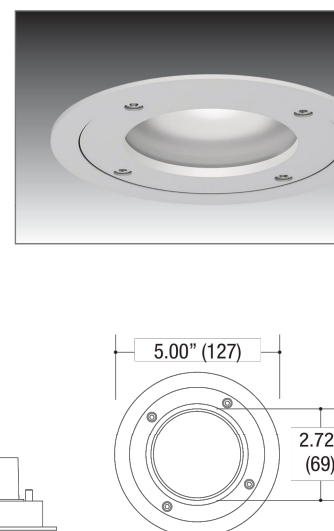
CATALOG NUMBER



Technical drawing of the Bullet outdoor recessed fixed downlight. The side view shows a depth of 6.96" (177) and a mounting bracket height of 6.06" (154). The top view shows a diameter of 5.00" (127) and a mounting hole diameter of 2.72" (69). A detail view shows the mounting bracket with a 7.30" (187) height and a 5.00" (127) diameter. A note indicates the remote power supply and housing are included, and the conduit (by others) is shown.



Technical drawing of the Bullet outdoor recessed fixed downlight. The side view shows a depth of 6.96" (177) and a mounting bracket height of 6.06" (154). The top view shows a diameter of 5.00" (127) and a mounting hole diameter of 2.72" (69). A detail view shows the mounting bracket with a 7.30" (187) height and a 5.00" (127) diameter. A note indicates the remote power supply and housing are included, and the conduit (by others) is shown.



Technical drawing of the Bullet outdoor recessed fixed downlight. The side view shows a depth of 6.96" (177) and a mounting bracket height of 6.06" (154). The top view shows a diameter of 5.00" (127) and a mounting hole diameter of 2.72" (69). A detail view shows the mounting bracket with a 7.30" (187) height and a 5.00" (127) diameter. A note indicates the remote power supply and housing are included, and the conduit (by others) is shown.

DOWNLIGHT

- Increased fixed downlight
- Die-cast aluminum trim
- Powder coat finish

HOUSING

- Extruded aluminum central housing
- Powder coat finish
- Dust and water tight sealed
- Cooling Out-Out - 64,65°

LED SOURCE

- Field-changeable optic
- 20W / 167lm, 100CRI / 3000K

ELECTRICAL

- Remotely installed LED driver included
- Separated primary wiring compartment with power supply
- Double cable entry for through wiring
- Supersure aluminum reflector
- Dimmable

MOUNTING

- Swing out pressure fit mounting clips
- Adjustable up to 1.80" max. calling dimension

LABELS

- Suitable for wet location
- 9066 rated

5 YEAR
 WARRANTY
 Limited

IP66
 Limited

ORDERING INFO

SERIES	WATTAGE	CRI / COLOR	BEAM	DRIVER	FINISH
BULLET-151A-T	20L 20W LED 160 lumens	9000K 100CRI / 2700K 100CRI / 160 lumens	N. Narrow 25° M. Medium 40° W. Wide 50°	DMU Dimming Multiple Forward Reverse (120-270V) 0.1W/1W/5W/10W Present (120-270V) DM1 1W/5W/10W Forward Phase 2 wire 1% (220-240V) DEU 10W/14 lumens, EcoSystem, 1% white On, Fade to Black, 1% (120-270V)	SS Silver
BULLET Recessed Die-cast aluminum trim Fixed Downlight Recessed Fixture					
		9000K 100CRI / 3000K 10000K 100CRI / 4000K 9000K 100CRI / 2700K 10000K 91CRI / 3000K			

Ordering Example: **BULLET-151A-T-20L-8030-M-DMU-SS**

60221 © ILLUMINATION LLC

All rights reserved. No part of this publication may be reproduced, stored in a retrieval system, or transmitted, in any form or by any means, electronic, mechanical, photocopying, recording, or by any information storage and retrieval system, without prior written permission from Illumination LLC.

HEADQUARTERS

9201 Downing Avenue
 Chatsworth, CA 91311

Telephone: 818-886-1335

Toll Free: 855-885-1338

Fax: 818-576-1335

www.illumination.com

000000

GE Evolve™

Canopy LED Soffit

ECLS

Project name _____
Date _____
Type _____

FAMILY	GENERATION	VOLTAGE	OPTICAL COEF.	DISTRIBUTION	CRI	CCT	DIMMING	CONTROLS	MOUNTING	FINISH	OPTIONS
E = Endure C = Canopy L = Lumeo S = Soffit	42 = 3rd Gen D = 50° T H = 30° T N = Notable with optical code TS	120-277 V	0.9	Symmetric Medium	7 = 70 CRI	30-3000K	1 = None A = Analog dimmer B = 0-10V dimmer P = DALI driver	1 = None A = Position Sensor B = Occupancy Sensor	SM = Surface Mount RM = Recessed Mount PM = Pendant Mount JM = J-Bar Mount LM = Luminaire Mounting Plate	WHITE - White BLACK - Black DMZ - Dark Satin Matte	F = Castled Finish SC = Side Comb Vents MS = Micro-Springs

PRICE CODE	TYPICAL TOTAL LOADS	TYPICAL SQUARE FOOTAGE	ECLSE NUMBER									
PRICE CODE	3000K	4000K	5000K	3000K	4000K	5000K	3000K	4000K	5000K	3000K	4000K	5000K
TS 1	500	3600	1700	2700	29	N/A	(E)CLS.TSPMT, (G)CLTHBS	(E)CLS.TSPMT, (G)CLTHBS	N/A	(E)CLS.TSPMT, (G)CLTHBS	(E)CLS.TSPMT, (G)CLTHBS	N/A
AS 5	5M	5300	5400	5400	29	A3	(E)CLS.ABPNT, (G)CLTHBS	(E)CLS.ABPNT, (G)CLTHBS	(E)CLS.ABPNT, (G)CLTHBS	(E)CLS.ABPNT, (G)CLTHBS	(E)CLS.ABPNT, (G)CLTHBS	(E)CLS.ABPNT, (G)CLTHBS
BF 5M	5M	4900	7100	7100	54	B8	(E)CLS.BRPNT, (G)CLTHBS	(E)CLS.BRPNT, (G)CLTHBS	(E)CLS.BRPNT, (G)CLTHBS	(E)CLS.BRPNT, (G)CLTHBS	(E)CLS.BRPNT, (G)CLTHBS	(E)CLS.BRPNT, (G)CLTHBS

Photometrics

ECLS - Symmetric Medium

7,100 lumens, 5000K (ECLS01_BSSM750_J)

Grid Distance in Units of Mounting Height at 15'
Initial Footcandle Values at Grade

→ Vertical plane through horizontal angle of Max. Cd at 15°
→ Horizontal cone through vertical angle of Max. Cd at 10°

SENIAOZ.COM

EVOLVE

EACL Series

LED Area Light/
Compact Low
Wattage

CONSTRUCTION

Housing:	Die-cast aluminum housing with integral heat sink for maximum heat transfer
Paint:	Corrosion resistant polyester powder paint, minimum 2.0 mil thickness Standard = Black, Dark Bronze Gray, White (RAL & custom colors available) Optional custom finish available
Weight:	18 lbs (8.16 kg) Max depending on configuration

OPTICAL SYSTEM

Lumens:	2,900 - 20,400
Distribution:	Asymmetric Forward Type IV Asymmetric Wide Type III Asymmetric, Narrow/Auto Type II
Efficacy:	123 - 143 LPW
CCT:	3000K, 4000K, 5000K
CR:	> 70

ELECTRICAL

Input Voltage:	120-277V & 347-480V
Input Frequency:	50/60Hz
Power Factor:	> 90% at rated watts
Total Harmonic Distortion:	< 20% at rated watts

SURGE PROTECTION*

Typical (120 Strikes)	Enhanced (400 Strikes)	Extreme (400 Strikes)
6kV/35kA	10kV/50kA	20kV/100kA

*Per ANSI/IEEE C87.5

Project Name: JPM Chase - Belfair Village
Date: _____ Type: SL-1
Notes: EACL01 C3AW740

Current's EAL Series of Area Light luminaires offer a wide range of optical patterns, color temperatures, lumen packages, and mounting configurations to optimize area light applications, as well as provide versatility in lighting design within the same form factor.

LUMEN MAINTENANCE

Projected Lp per ES TM-21-11 at 25°C

Lumen Codes	LXX(100) @ Hours	25,000 HR	50,000 HR	60,000 HR
A2, A3, A4, B2, B3, B4, C2, C3, C4, C5, C6, C7, C8, D2, H2, H3, F2, F3, F4	194	190	188	
H2, H3, H4	197			196

Note: Projected on basis of an LM80 of 10,000 hours. Accepted industry literature apply to JPM Luminous flux and lumens maintenance measurements.

LUMINAIRE AMBIENT TEMPERATURE FACTOR

Ambient Temp (°C)	Initial Flux Factor	Ambient Temp (°C)	Initial Flux Factor
30	1.02	30	0.99
20	1.01	40	0.98
25	1.00	50	0.97

RATINGS

Operating Temperature: 40°C to 50°C

Vibration: 3G vibration per ANSI C351-3-2018

LM-79: Testing in accordance with IESNA Standards

CONTROLS

Dimming:	Standard - 0-10V <input type="checkbox"/>
	Optional - DALI (Option U) <input type="checkbox"/>
Sensors:	Standard - Occupancy (PE) available Light/Sight and Dismount Compatible

WARRANTY

☐ 5 Year (Standard)

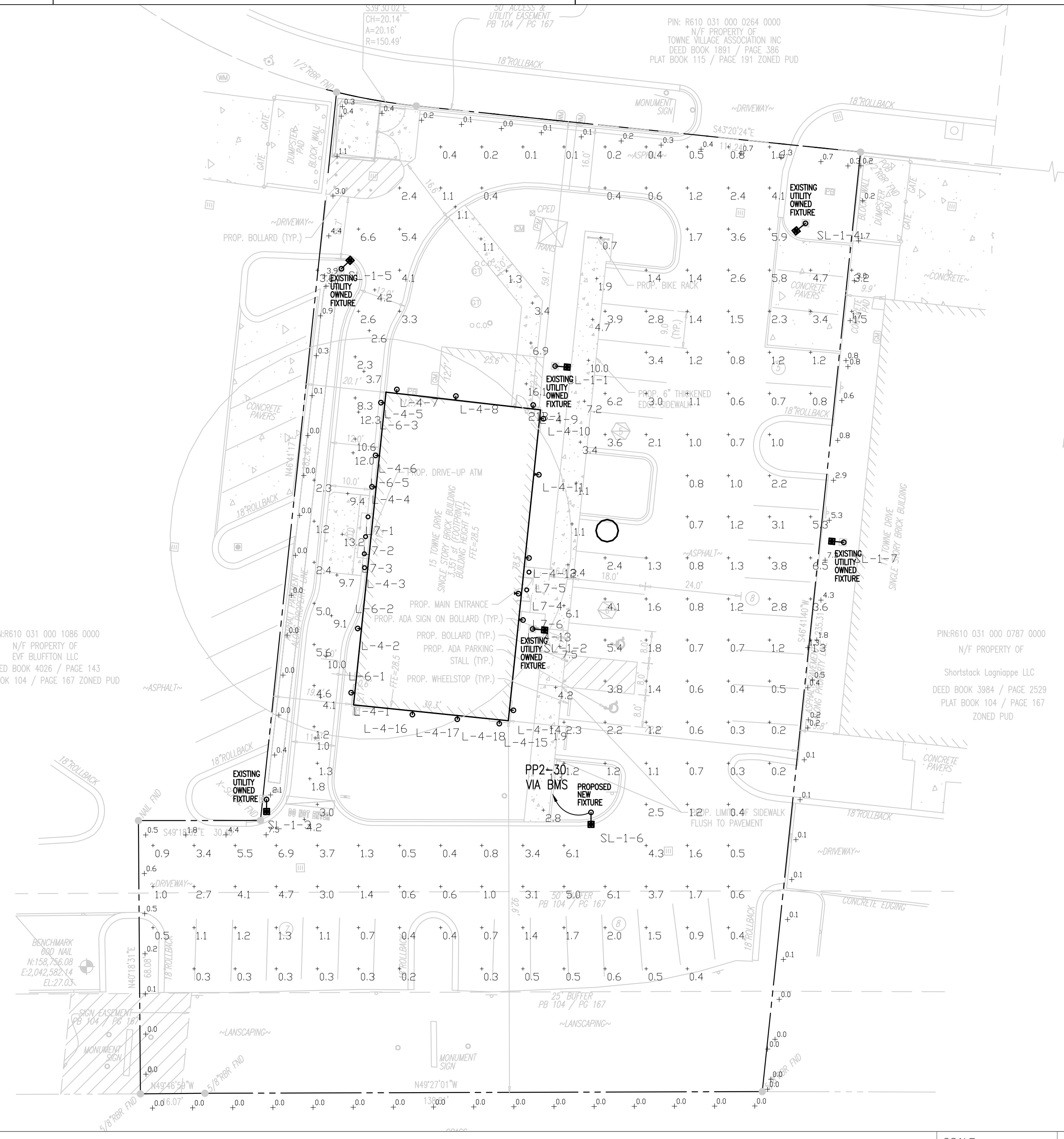
Not all product variations listed on this page are UL classified. Visit www.designlight.org/research-to-configure-qualification





Current

current.com/evolve

© 2023 Current Lighting Industries, LLC. All rights reserved. The EACL and EVolve are trademarks of the Current Lighting Industries Company and are used under license. Information and specifications subject to change without notice. All other names are design or service marks of their respective owners. Warranty conditions.

Page 4 of 4
Rev: 04/2023



		
400 N. Ashley Dr. Suite 600 Tampa, FL 33602	P: 813-323-9233 FL Lic#AR-0014752 www.bdgllp.com	
		
<p>Belfaire Village</p> <p>JPM Chase Retail Banking Center</p> <p>15 Towne Drive,</p> <p>Bluffton, SC 29910</p>		
<p>Digitally signed by Luis Vargas Date: 2025.04.29 07:52:27-04'00'</p>		
<p>KPI ENGINEERING, INC.</p> <p>PROFESSIONAL ENGINEERS</p> <p>3203 QUEEN PALM DRIVE TAMPA, FLORIDA 33619 PHONE (813) 241-6488 Board of Professional Engineers - License # 6361</p>		
<div></div>		
<p>SEAL LUIS G. VARGAS JR., P.E. SC LIC. No. 22054 EXP 06-30-2026</p> <div></div>		
<p><small>This item has been digitally signed by Luis G. Vargas Jr., P.E. on the date adjacent to the seal.</small></p> <p><small>Printed copies of this document are not considered signed and sealed and the signature must be verified on any electronic copies.</small></p>		
ISSUE/BY	DATE	DESCRIPTION
<p>PROJECT INFORMATION BLOCK</p> <p>JOB #: 244044</p> <p>DATE: 02-12-2025</p> <p>DRAWN BY: RR/DB/RV</p> <p>CHECKED BY: SJ/LV</p>		
<p>SHEET TITLE</p> <p>PHOTOMETRIC SITE PLAN</p>		
<p>SHEET NUMBER</p> <p>E000.1</p>		