

# Buckwalter Parkway Access Management Plan Update

---

OCTOBER 18, 2021



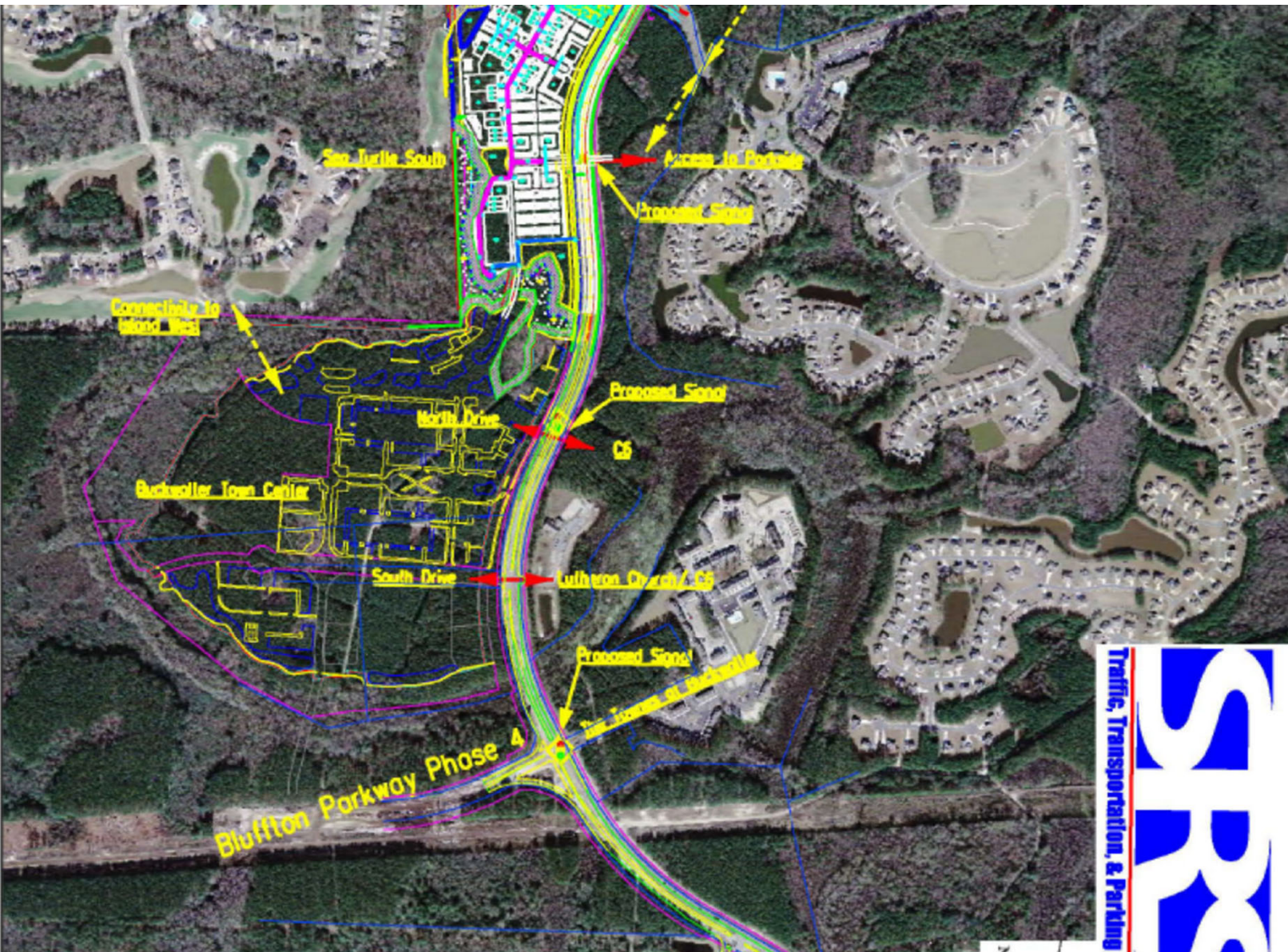


WALTER PARKWAY  
S & CONNECTIVITY  
Access Management: Bluffton, SC

Figure 4



2007 Access  
Management  
Plan –  
Buckwaller  
Parkway  
  
North Section



2007 Access Management Plan –  
Buckwalter Parkway

South Section

# Buckwalter Parkway Corridor Standards Per *Community Development Code* *(ordinance currently being updated)*

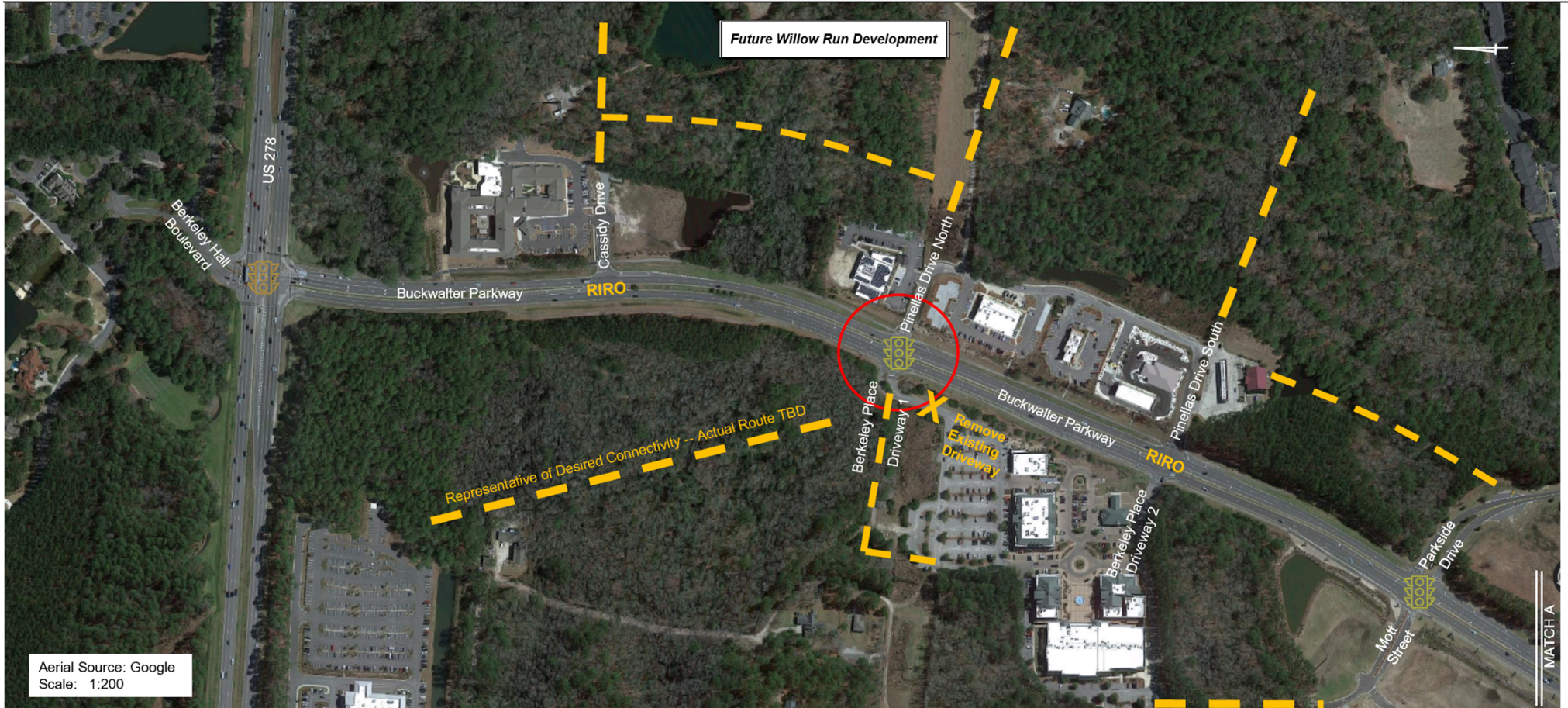
---

- 2,000-foot spacing signalized intersections
- All other intersections RIRO desired – minimum 500-foot spacing with joint access, if parcel has access to a signalized intersection 800-foot spacing
- Existing/Planned Signalized Intersection Locations on Buckwalter Parkway listed in *CDC*
  1. Buckwalter Parkway at US 278
  2. Planned location - Buckwalter Parkway at Cinema North (2,026 feet south of US 278)
  3. Planned location - Buckwalter Parkway at Mott Street/Parkside Drive (1,788 feet south of Cinema North)
  4. Planned location - Buckwalter Parkway at Kroger Fuel Drive (2,176 feet south of Mott Street/Parkside Drive)
  5. Buckwalter Parkway at Buckwalter Town Center South (1,496 feet south of Kroger Fuel Drive)
  6. Buckwalter Parkway at Bluffton Parkway (1,077 feet south of Buckwalter Town Center South)  
\*Intersection location is subject to change to better reflect the access management goals stated above for the corridor as the current location is less than desired spacing of 1,500 feet from location 5.
  7. Buckwalter Parkway at Lake Point Drive (1,585 feet south of Bluffton Parkway) \*Intersection location is subject to change to better reflect the access management goals stated above for the corridor as the current location would be less than desired spacing of 1,500 feet from a relocated location 6.
  8. Buckwalter Parkway at Bluffton Parkway and Hampton Hall (3,958 feet south of Lake Point Drive/Parker's driveway)
  9. Buckwalter Parkway at H.E. McCracken Circle and Old Bridge Drive (4,500 feet south of Hampton Hall)
  10. Buckwalter Parkway at SC 46 (May River Road)

### Comparison of Traffic Control by Scenario\*

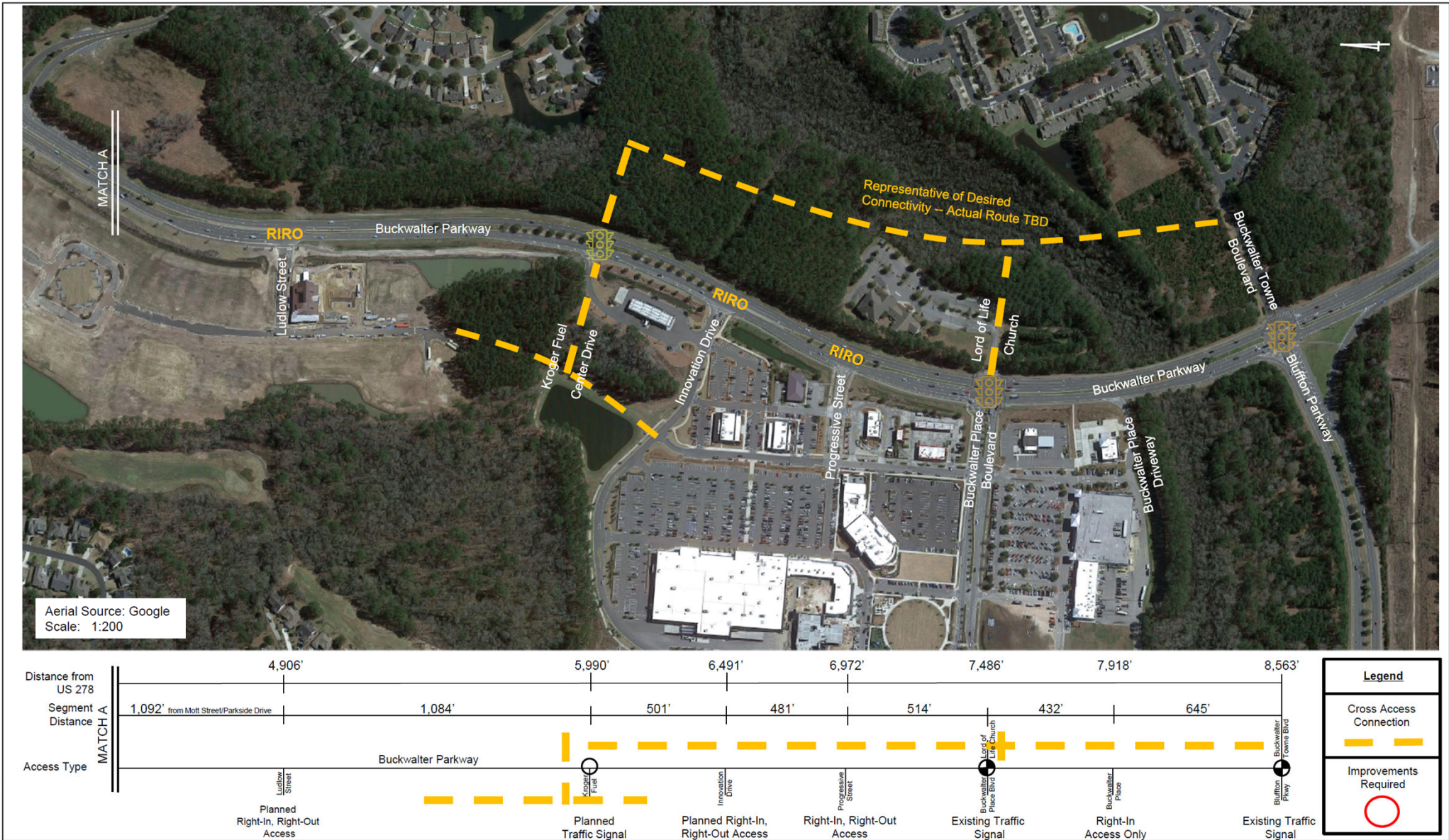
<u>Location</u>	<u>Scenario 1 – 2007 Plan</u>	<u>Scenario 2 – 2021 Proposed Plan</u>
US 278	Existing Signal	Existing Signal
Cassidy Drive	Undefined Unsignalized Access	Right-in, Right-out
Pinellas Drive N	Undefined Unsignalized Access	Proposed Signalization, when warranted
Pinellas Drive S	Proposed Signalization, when warranted	Right-in, Right-out
Mott St./Parkside Dr.	Undefined Unsignalized Access	Proposed Signalization, when warranted
Ludlow St.	Proposed Signalization, when warranted	Right-in, Right-out
Kroger Fuel Driveway	Right-in, Right-out	Proposed Signalization, when warranted
Innovation Dr.	Proposed Signalization, when warranted	Right-in, Right-out
Progressive Dr.	Right-in, Right-out	Right-in, Right-out
Buckwalter Place Blvd./Lord of Life Dwy.	Existing Signal	Existing Signal
Buckwalter Place Dwy.	Right-in Only	Right-in Only

\* Roadway improvements may be required at all locations in both scenarios



Aerial Source: Google  
Scale: 1:200





Aerial Source: Google  
Scale: 1:200



## Signalized Intersection Spacing by Scenario

	Segment Start	Segment End	Approximate Distance between Intersections (feet)
<b>Scenario 1 – 2007 Access Management Plan</b>			
1	US 278	Pinellas Drive South/Berkeley Place Dwy. #2	2,946
2	Pinellas Drive South/Berkeley Place Dwy. #2	Ludlow Street	1,960
3	Ludlow Street	Innovation Drive	1,585
4	Innovation Drive	Buckwalter Place Boulevard	995
5	Buckwalter Place Boulevard	Bluffton Parkway	1,077
<b>Scenario 2 – 2021 Proposed Access Management Plan</b>			
1	US 278	Pinellas Drive North/Berkeley Place Dwy. #1	2,026
2	Pinellas Drive South/Berkeley Place Dwy. #1	Mott Street/Parkside Drive	1,788
3	Mott Street/Parkside Drive	Kroger Fuel Center Drive	2,176
4	Kroger Fuel Center Drive	Buckwalter Place Boulevard	1,496
5	Buckwalter Place Boulevard	Bluffton Parkway	1,077



# Questions?