

SITE PLAN

SCALE: 1/8" = 1'-0"

SURVEYOR TO CONFIRM ALL
DIMENSIONS, LOT ANGLES, SETBACKS
AND LOCATION OF EASEMENTS.

REVISION	DATE	BY
REVISION #1	12/12/2024	KJC
REVISION #2	12/18/2024	KJC
REVISION #3	12/21/2024	KJC
REVISION #4	01/08/2025	KJC
REVISION #5	01/14/2025	KJC
REVISION #6	01/19/2025	KJC
REVISION #7	01/28/2025	KJC
REVISION #8	02/05/2025	KJC
REVISION #9	02/08/2025	KJC

THESE DRAWINGS ARE THE SOLE PROPERTY OF NELSON HOMES AND CAN BE USED FOR COMPLETION OF THIS PROJECT ONLY. DO NOT COPY, MODIFY OR REDISTRIBUTE THESE DRAWINGS WITHOUT WRITTEN CONSENT FROM NELSON HOMES.

ALL CONSTRUCTION TO MEET OR EXCEED ALL LOCAL AND NATIONAL BUILDING CODES.

CONTRACTOR SHALL VERIFY AND BE RESPONSIBLE FOR ALL DIMENSIONS, SPECIFICATIONS AND METHODS OF CONSTRUCTION.

DO NOT SCALE DRAWINGS. REPORT ANY ERRORS OR OMISSIONS TO OWNER BEFORE PROCEEDING.



*Trusted Quality and Service
Since 1949*

Head Office: Highway 16 West & RR 15
Mail: 6609-44 St., Lloydminster, AB T9V 2X1
www.nlc.ca

PROJECT: HARRIS & BARBINA GARAGE

NH PROJECT No.: M0660

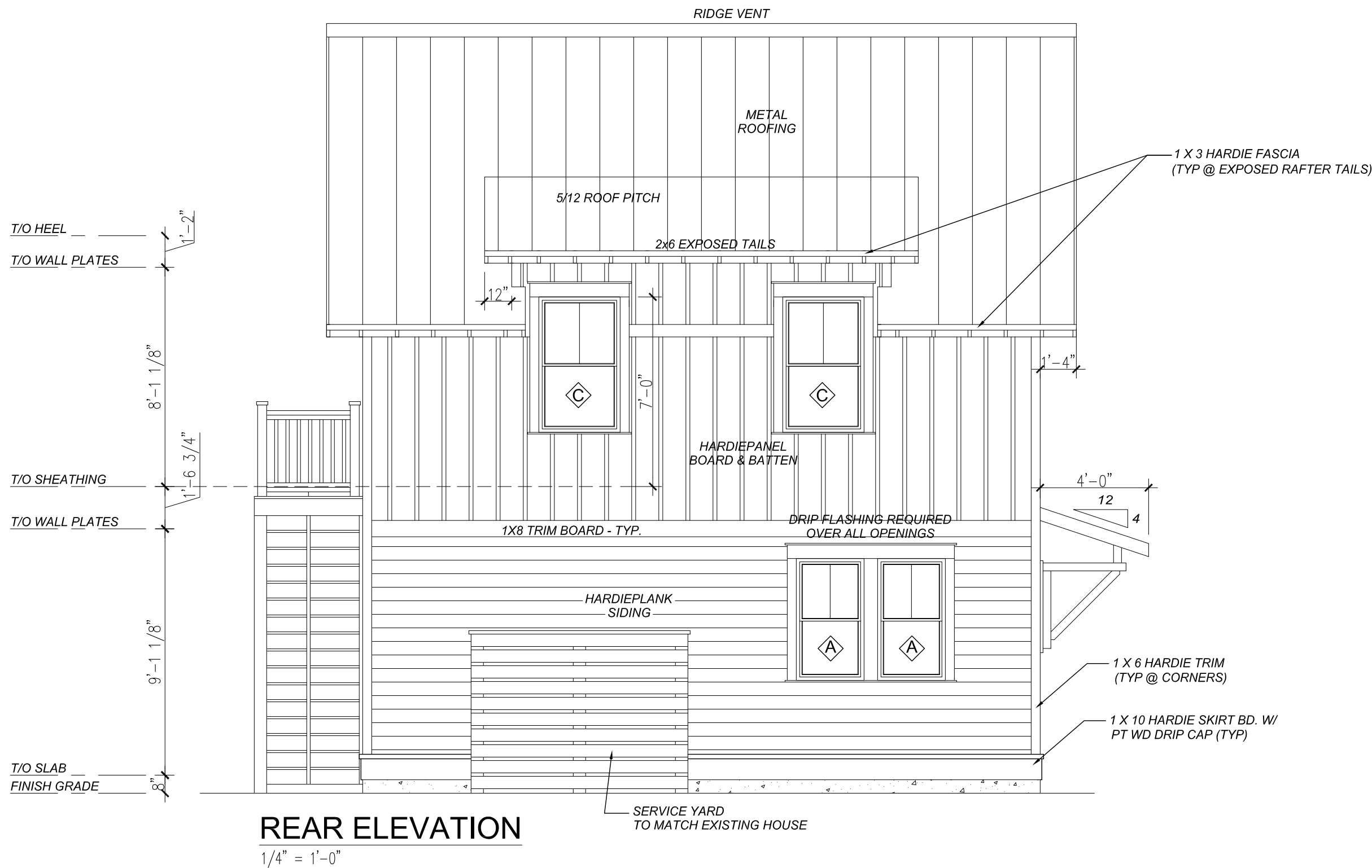
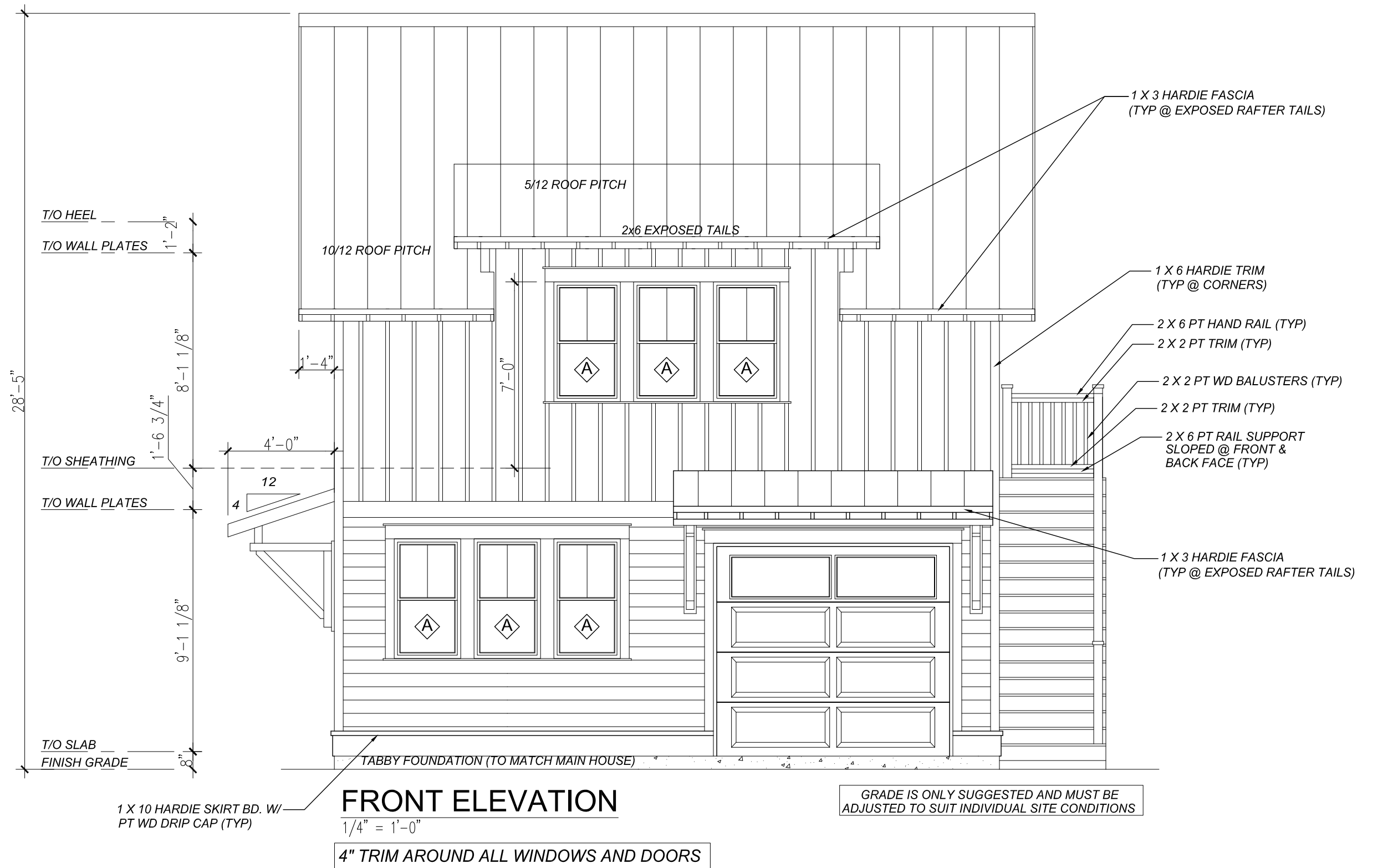
LOCATION: 36 WHARF STREET,
BLUFFTON, SC

SIZE: 1200 SQ FT

DRAWN BY: KJC

02/25/2025

1 OF 11



REVISION	DATE	BY
REVISION #1	12/12/2024	KJC
REVISION #2	12/18/2024	KJC
REVISION #3	12/21/2024	KJC
REVISION #4	01/08/2025	KJC
REVISION #5	01/14/2025	KJC
REVISION #6	01/19/2025	KJC
REVISION #7	01/28/2025	KJC
REVISION #8	02/05/2025	KJC
REVISION #9	02/08/2025	KJC

THESE DRAWINGS ARE THE SOLE PROPERTY OF NELSON HOMES AND CAN BE USED FOR COMPLETION OF THIS PROJECT ONLY. DO NOT COPY, MODIFY OR REDISTRIBUTE THESE DRAWINGS WITHOUT WRITTEN CONSENT FROM NELSON HOMES.

ALL CONSTRUCTION TO MEET OR EXCEED ALL LOCAL AND NATIONAL BUILDING CODES.

CONTRACTOR SHALL VERIFY AND BE RESPONSIBLE FOR ALL DIMENSIONS, SPECIFICATIONS AND METHODS OF CONSTRUCTION.

DO NOT SCALE DRAWINGS. REPORT ANY ERRORS OR OMISSIONS TO OWNER BEFORE PROCEEDING.



Trusted Quality and Service
Since 1949

Head Office: Highway 16 West & RR 15
Mail: 6609-44 St., Lloydminster, AB T9V 2X1
www.nlc.ca

PROJECT: HARRIS & BARBINA GARAGE

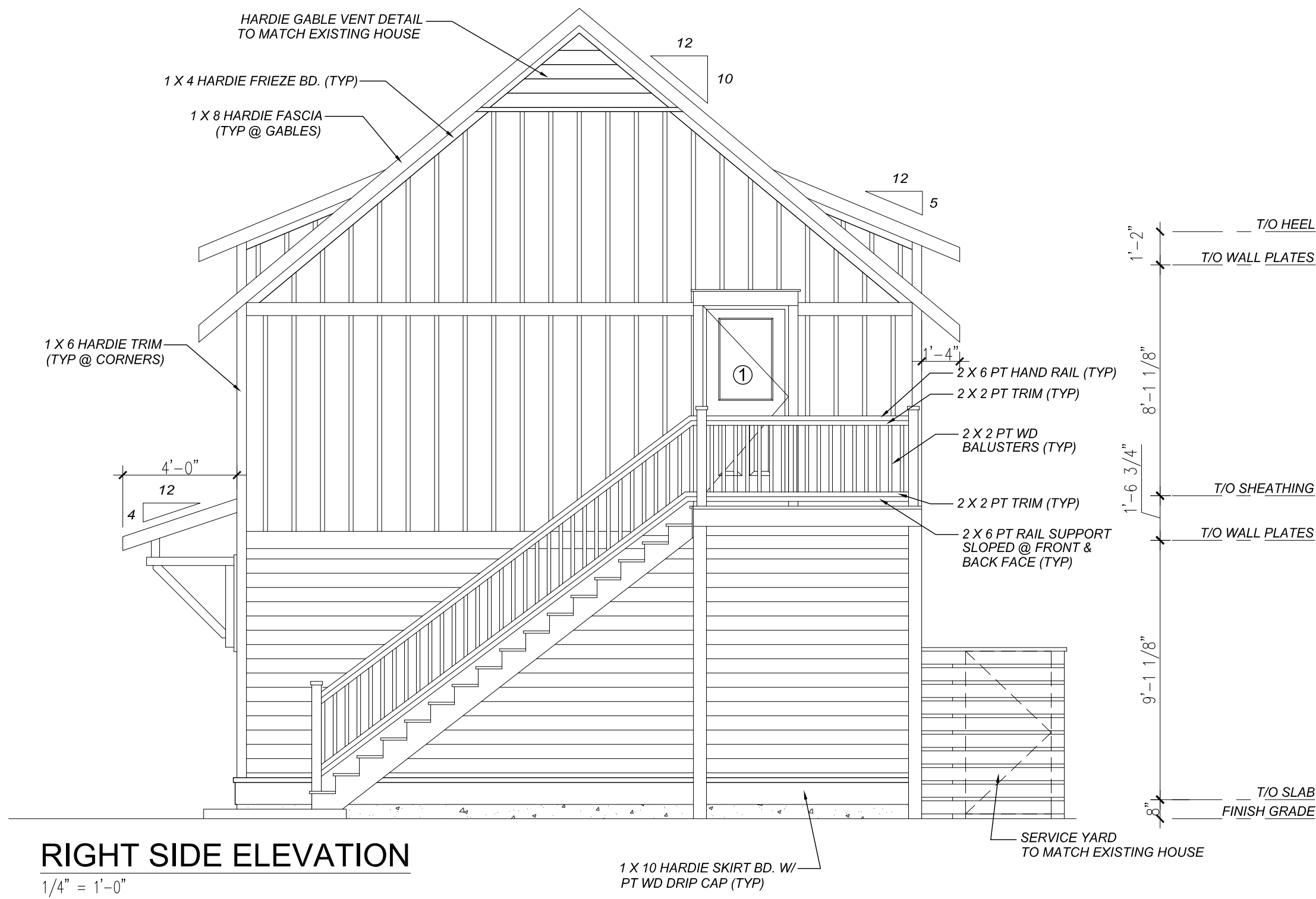
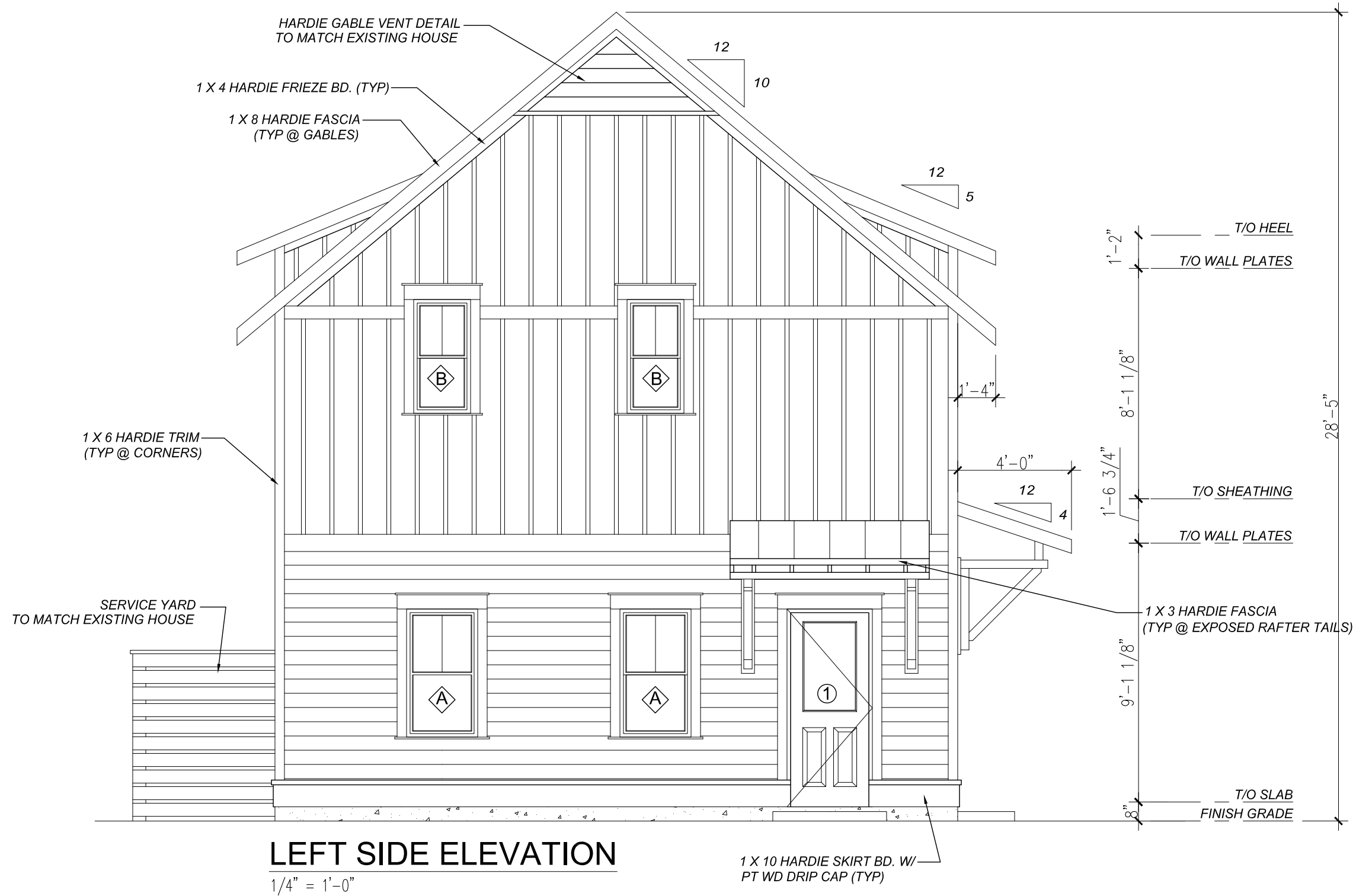
NH PROJECT No.: M0660

LOCATION: 36 WHARF STREET,
BLUFFTON, SC

SIZE: 1200 SQ FT

DRAWN BY: KJC 02/25/2025

2 OF 11



REVISION	DATE	BY
REVISION #1	12/12/2024	KJC
REVISION #2	12/18/2024	KJC
REVISION #3	12/21/2024	KJC
REVISION #4	01/08/2025	KJC
REVISION #5	01/14/2025	KJC
REVISION #6	01/19/2025	KJC
REVISION #7	01/28/2025	KJC
REVISION #8	02/05/2025	KJC
REVISION #9	02/08/2025	KJC

THESE DRAWINGS ARE THE SOLE PROPERTY OF NELSON HOMES AND CAN BE USED FOR COMPLETION OF THIS PROJECT ONLY. DO NOT COPY, MODIFY OR REDISTRIBUTE THESE DRAWINGS WITHOUT WRITTEN CONSENT FROM NELSON HOMES.

ALL CONSTRUCTION TO MEET OR EXCEED ALL LOCAL AND NATIONAL BUILDING CODES.

CONTRACTOR SHALL VERIFY AND BE RESPONSIBLE FOR ALL DIMENSIONS, SPECIFICATIONS AND METHODS OF CONSTRUCTION.

DO NOT SCALE DRAWINGS. REPORT ANY ERRORS OR OMISSIONS TO OWNER BEFORE PROCEEDING.



Trusted Quality and Service
Since 1949

Head Office: Highway 16 West & RR 15
Mail: 6609-44 St., Lloydminster, AB T9V 2X1
www.nlc.ca

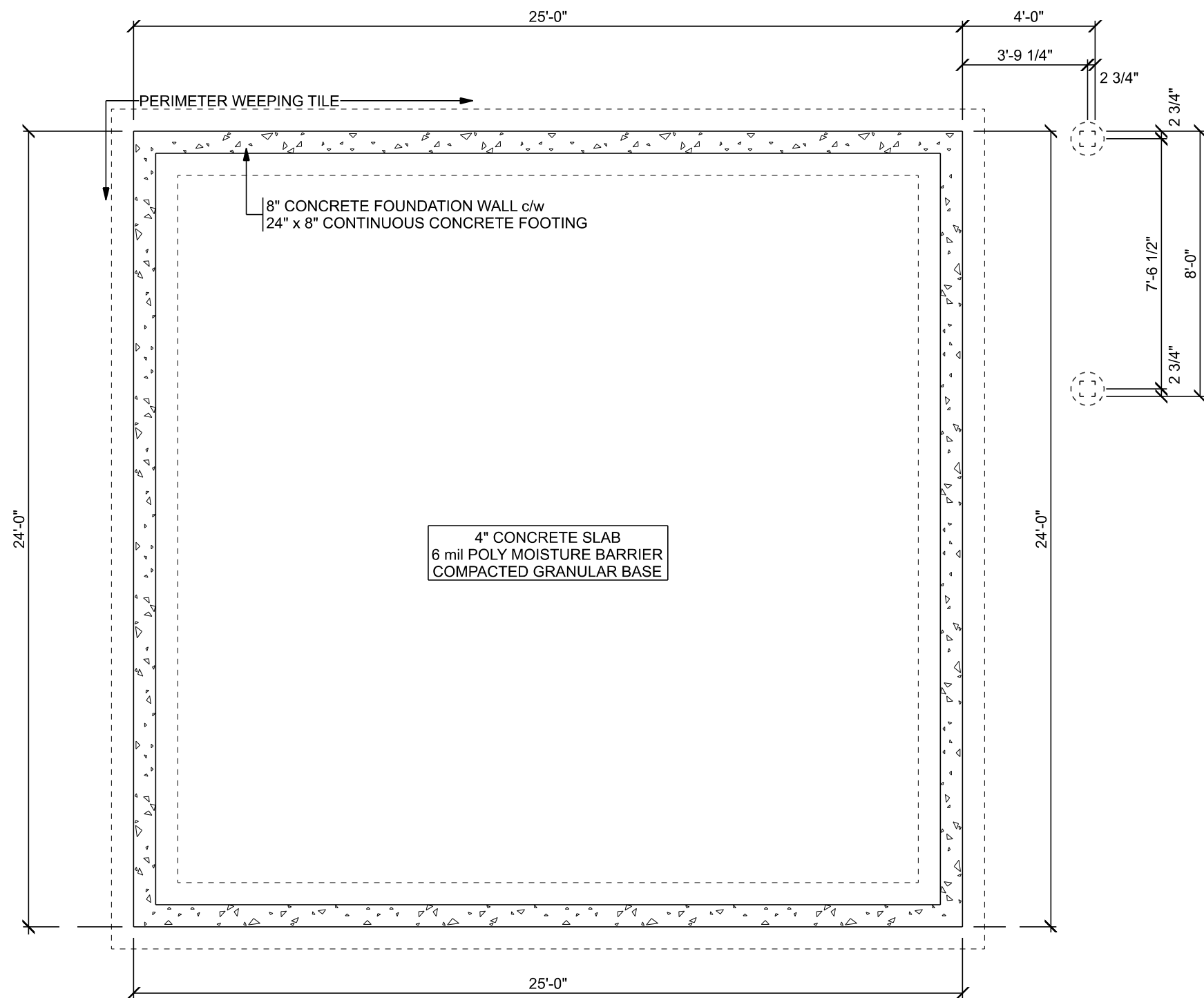
PROJECT: HARRIS & BARBINA GARAGE

NH PROJECT No.: M0660

LOCATION: 36 WHARF STREET,
BLUFFTON, SC

SIZE: 1200 SQ FT

DRAWN BY: KJC 02/25/2025



FOUNDATION PLAN

SCALE: 1/4" = 1'-0"

SLAB ON GRADE FOUNDATION DESIGN BY P. ENG.

THE FOUNDATION DESIGN AND ALL SPECIFICATIONS MUST BE CONFIRMED BY A PROFESSIONAL ENGINEER AND/OR LOCAL BUILDING OFFICIALS BASED ON LOCAL SOIL CONDITIONS.

REVISION	DATE	BY
REVISION #1	12/12/2024	KJC
REVISION #2	12/18/2024	KJC
REVISION #3	12/21/2024	KJC
REVISION #4	01/08/2025	KJC
REVISION #5	01/14/2025	KJC
REVISION #6	01/19/2025	KJC
REVISION #7	01/28/2025	KJC
REVISION #8	02/05/2025	KJC
REVISION #9	02/08/2025	KJC

THESE DRAWINGS ARE THE SOLE PROPERTY OF NELSON HOMES AND CAN BE USED FOR COMPLETION OF THIS PROJECT ONLY. DO NOT COPY, MODIFY OR REDISTRIBUTE THESE DRAWINGS WITHOUT WRITTEN CONSENT FROM NELSON HOMES.

ALL CONSTRUCTION TO MEET OR EXCEED ALL LOCAL AND NATIONAL BUILDING CODES.

CONTRACTOR SHALL VERIFY AND BE RESPONSIBLE FOR ALL DIMENSIONS, SPECIFICATIONS AND METHODS OF CONSTRUCTION.

DO NOT SCALE DRAWINGS. REPORT ANY ERRORS OR OMISSIONS TO OWNER BEFORE PROCEEDING.



Trusted Quality and Service
Since 1949

Head Office: Highway 16 West & RR 15
Mail: 6609-44 St., Lloydminster, AB T9V 2X1
www.nlc.ca

PROJECT: HARRIS & BARBINA GARAGE

NH PROJECT No.: M0660

LOCATION: 36 WHARF STREET,
BLUFFTON, SC

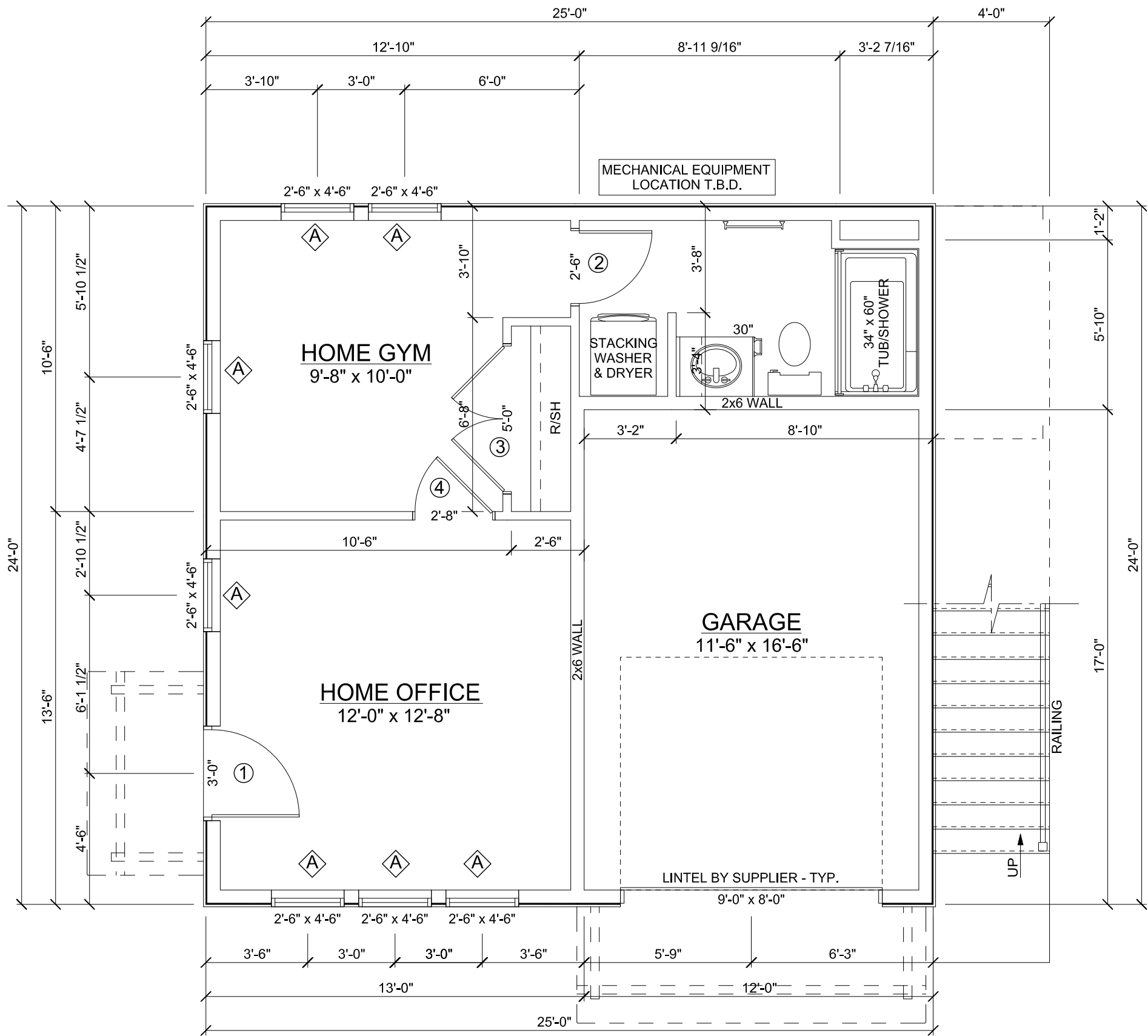
SIZE: 1200 SQ FT	4 OF 11
DRAWN BY: KJC 02/25/2025	

WINDOW SCHEDULE			
WINDOW	SIZE	TYPE	HEAD HEIGHT
A	2'-6" X 4'-6"	DOUBLE HUNG	8'-0" / 7'-0"
B	2'-0" X 4'-0"	DOUBLE HUNG	7'-0"
C	3'-0" X 5'-0"	DOUBLE HUNG	7'-0"

DOOR WINDOW NOTES:

- 1.) WINDOWS EMERGENCY EGRESS TO COMPLY WITH IRC SECTION R310.2.1.
2.) WINDOWS ARE TO COMPLY WITH IRC TABLE 402.1.1
3.) DESIGN PRESSURE RATING IN ACCORDANCE WITH IRC SECTION 609.2.
4.) GLAZING IN DOORS TO BE TEMPERED.

DOOR SCHEDULE		
DOOR NO.	SIZE	DESCRIPTION
1	3'-0" X 6'-8"	HALF LITE EXTERIOR DOOR
2	2'-6" X 6'-8"	INTERIOR DOOR
3	(2) 2'-6" X 6'-8"	DOUBLE INTERIOR DOOR
4	2'-8" X 6'-8"	INTERIOR DOOR
5	2'-6" X 6'-8"	INTERIOR POCKET DOOR
6	2'-8" X 6'-8"	INTERIOR POCKET DOOR
7	(2) 2'-0" X 6'-8"	DOUBLE INTERIOR DOOR



MAIN FLOOR PLAN

SCALE: 1/4" = 1'-0"
396 SQ FT (LIVING)
204 SQ FT (GARAGE)

9'-1 1/8" HIGH CEILINGS THROUGHOUT UNLESS NOTED OTHERWISE

REVISION	DATE	BY
REVISION #1	12/12/2024	KJC
REVISION #2	12/18/2024	KJC
REVISION #3	12/21/2024	KJC
REVISION #4	01/08/2025	KJC
REVISION #5	01/14/2025	KJC
REVISION #6	01/19/2025	KJC
REVISION #7	01/28/2025	KJC
REVISION #8	02/05/2025	KJC
REVISION #9	02/08/2025	KJC

THESE DRAWINGS ARE THE SOLE PROPERTY OF NELSON HOMES AND CAN BE USED FOR COMPLETION OF THIS PROJECT ONLY. DO NOT COPY, MODIFY OR REDISTRIBUTE THESE DRAWINGS WITHOUT WRITTEN CONSENT FROM NELSON HOMES.

ALL CONSTRUCTION TO MEET OR EXCEED ALL LOCAL AND NATIONAL BUILDING CODES.

CONTRACTOR SHALL VERIFY AND BE RESPONSIBLE FOR ALL DIMENSIONS, SPECIFICATIONS AND METHODS OF CONSTRUCTION.

DO NOT SCALE DRAWINGS. REPORT ANY ERRORS OR OMISSIONS TO OWNER BEFORE PROCEEDING.



Trusted Quality and Service
Since 1949

Head Office: Highway 16 West & RR 15
Mail: 6609-44 St., Lloydminster, AB T9V 2X1
www.nlc.ca

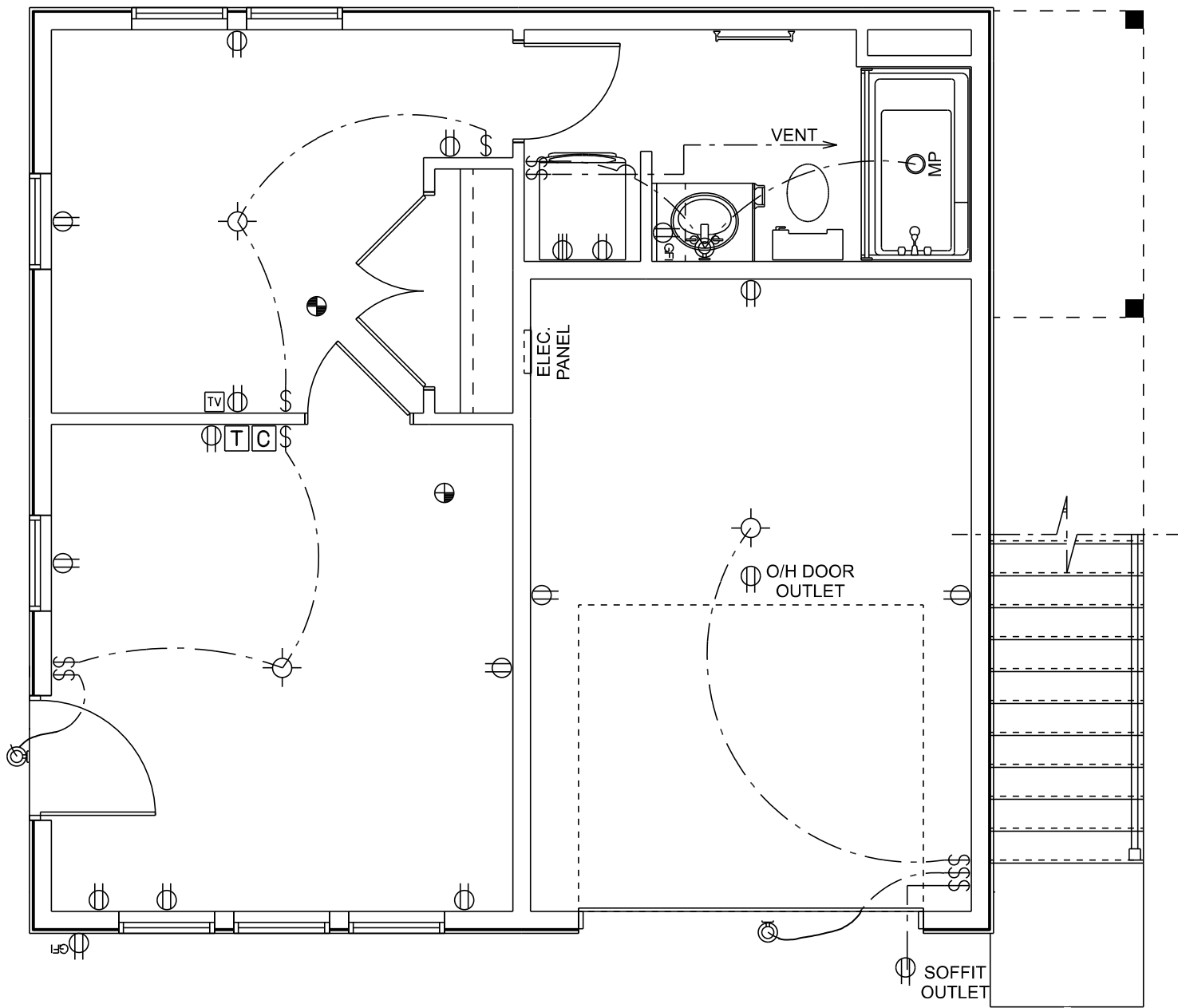
PROJECT: HARRIS & BARBINA GARAGE

NH PROJECT No.: M0660

LOCATION: 36 WHARF STREET,
BLUFFTON, SC

SIZE: 1200 SQ FT	5 OF 11
DRAWN BY: KJC	

02/25/2025



ELECTRICAL LAYOUT

SCALE: 1/4" = 1'-0"

ELECTRICAL LAYOUT SHOWN IS TO BE USED AS A GUIDE ONLY AND MAY BE ADJUSTED ON SITE AS REQUIRED.

REVISION	DATE	BY
REVISION #1	12/12/2024	KJC
REVISION #2	12/18/2024	KJC
REVISION #3	12/21/2024	KJC
REVISION #4	01/08/2025	KJC
REVISION #5	01/14/2025	KJC
REVISION #6	01/19/2025	KJC
REVISION #7	01/28/2025	KJC
REVISION #8	02/05/2025	KJC
REVISION #9	02/08/2025	KJC

THESE DRAWINGS ARE THE SOLE PROPERTY OF NELSON HOMES AND CAN BE USED FOR COMPLETION OF THIS PROJECT ONLY. DO NOT COPY, MODIFY OR REDISTRIBUTE THESE DRAWINGS WITHOUT WRITTEN CONSENT FROM NELSON HOMES.

ALL CONSTRUCTION TO MEET OR EXCEED ALL LOCAL AND NATIONAL BUILDING CODES.

CONTRACTOR SHALL VERIFY AND BE RESPONSIBLE FOR ALL DIMENSIONS, SPECIFICATIONS AND METHODS OF CONSTRUCTION.

DO NOT SCALE DRAWINGS. REPORT ANY ERRORS OR OMISSIONS TO OWNER BEFORE PROCEEDING.

ELECTRICAL LEGEND	
ELECTRICAL	SYMBOL
Door Chime	
Electrical Panel	
Light	
Outlet	
Outlet 220V	
Outlet GFI	
Pot Light	
Smoke & CO Detector	
Smoke Detector	
Switch	
TV Outlet	
Thermostat	
Wall Mount Light	



Trusted Quality and Service
Since 1949

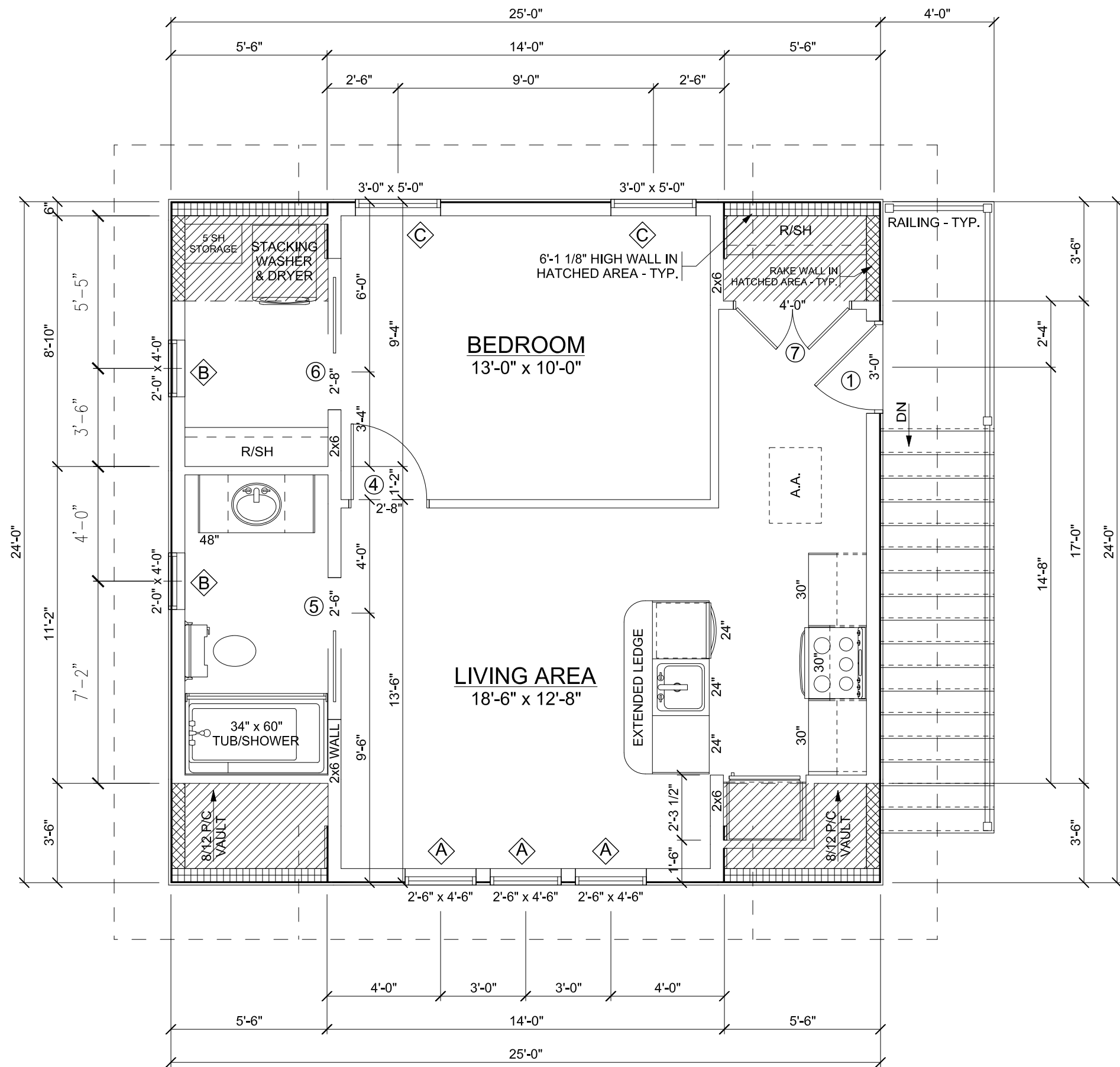
Head Office: Highway 16 West & RR 15
Mail: 6609-44 St., Lloydminster, AB T9V 2X1
www.nlc.ca

PROJECT: HARRIS & BARBINA GARAGE

NH PROJECT No.: M0660

LOCATION: 36 WHARF STREET,
BLUFFTON, SC

SIZE: 1200 SQ FT	6 OF 11
DRAWN BY: KJC 02/25/2025	



SECOND FLOOR PLAN

SCALE: 1/4" = 1'-0"

600 SQ FT

8'-1 1/8" HIGH CEILINGS THROUGHOUT UNLESS NOTED OTHERWISE

REVISION	DATE	BY
REVISION #1	12/12/2024	KJC
REVISION #2	12/18/2024	KJC
REVISION #3	12/21/2024	KJC
REVISION #4	01/08/2025	KJC
REVISION #5	01/14/2025	KJC
REVISION #6	01/19/2025	KJC
REVISION #7	01/28/2025	KJC
REVISION #8	02/05/2025	KJC
REVISION #9	02/08/2025	KJC

THESE DRAWINGS ARE THE SOLE PROPERTY OF NELSON HOMES AND CAN BE USED FOR COMPLETION OF THIS PROJECT ONLY. DO NOT COPY, MODIFY OR REDISTRIBUTE THESE DRAWINGS WITHOUT WRITTEN CONSENT FROM NELSON HOMES.

ALL CONSTRUCTION TO MEET OR EXCEED ALL LOCAL AND NATIONAL BUILDING CODES.

CONTRACTOR SHALL VERIFY AND BE RESPONSIBLE FOR ALL DIMENSIONS, SPECIFICATIONS AND METHODS OF CONSTRUCTION.

DO NOT SCALE DRAWINGS. REPORT ANY ERRORS OR OMISSIONS TO OWNER BEFORE PROCEEDING.



Trusted Quality and Service
Since 1949

Head Office: Highway 16 West & RR 15
Mail: 6609-44 St., Lloydminster, AB T9V 2X1
www.nlc.ca

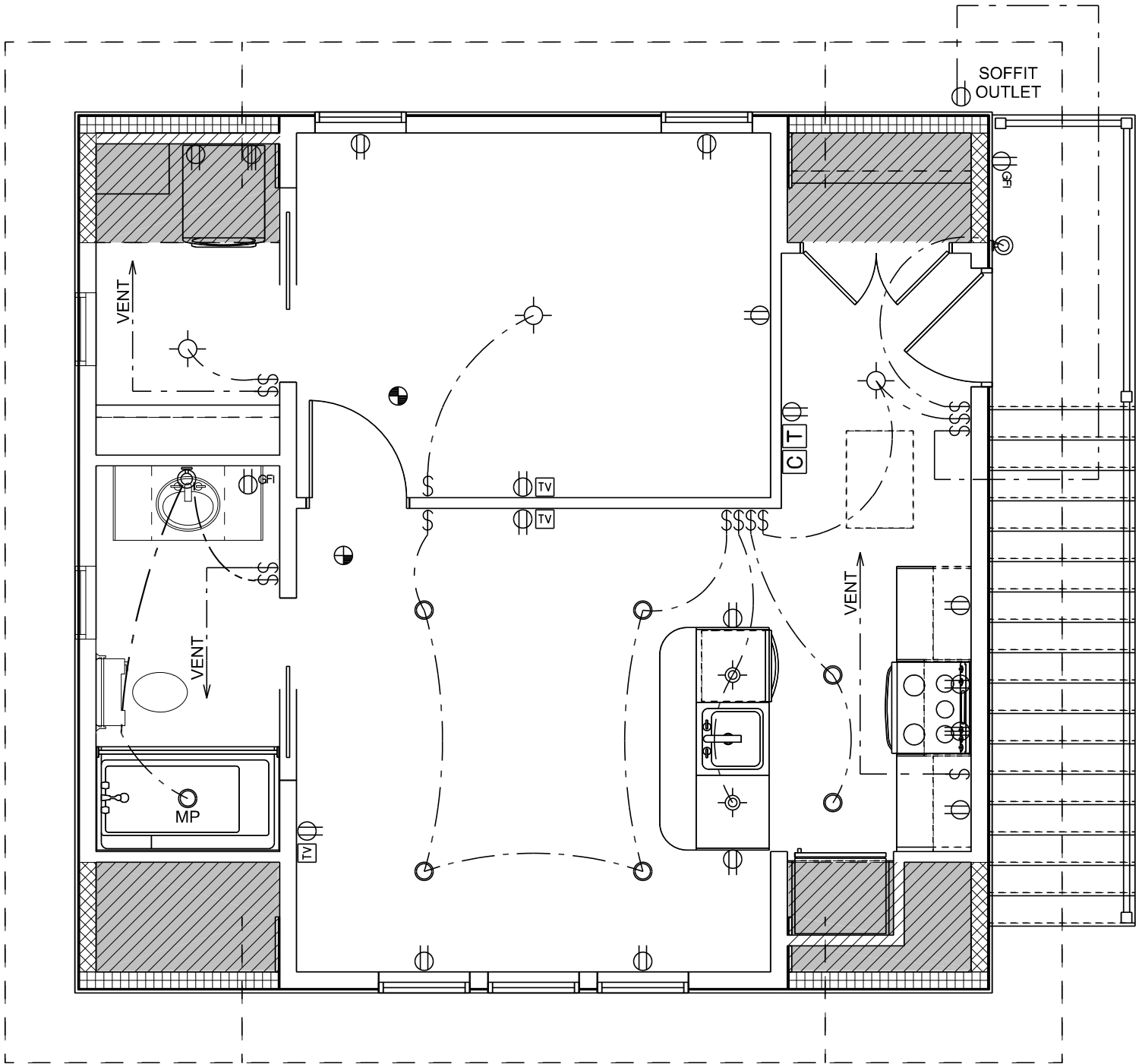
PROJECT: HARRIS & BARBINA GARAGE

NH PROJECT No.: M0660

LOCATION: 36 WHARF STREET,
BLUFFTON, SC

SIZE: 1200 SQ FT

DRAWN BY: KJC 02/25/2025



ELECTRICAL LAYOUT

SCALE: 1/4" = 1'-0"

ELECTRICAL LAYOUT SHOWN IS TO BE USED AS A GUIDE ONLY AND MAY BE ADJUSTED ON SITE AS REQUIRED.

REVISION	DATE	BY
REVISION #1	12/12/2024	KJC
REVISION #2	12/18/2024	KJC
REVISION #3	12/21/2024	KJC
REVISION #4	01/08/2025	KJC
REVISION #5	01/14/2025	KJC
REVISION #6	01/19/2025	KJC
REVISION #7	01/28/2025	KJC
REVISION #8	02/05/2025	KJC
REVISION #9	02/08/2025	KJC

THESE DRAWINGS ARE THE SOLE PROPERTY OF NELSON HOMES AND CAN BE USED FOR COMPLETION OF THIS PROJECT ONLY. DO NOT COPY, MODIFY OR REDISTRIBUTE THESE DRAWINGS WITHOUT WRITTEN CONSENT FROM NELSON HOMES.

ALL CONSTRUCTION TO MEET OR EXCEED ALL LOCAL AND NATIONAL BUILDING CODES.

CONTRACTOR SHALL VERIFY AND BE RESPONSIBLE FOR ALL DIMENSIONS, SPECIFICATIONS AND METHODS OF CONSTRUCTION.

DO NOT SCALE DRAWINGS. REPORT ANY ERRORS OR OMISSIONS TO OWNER BEFORE PROCEEDING.

ELECTRICAL LEGEND	
ELECTRICAL	SYMBOL
Door Chime	
Light	
Outlet	
Outlet 220V	
Outlet GFI	
Pendant Light	
Pot Light	
Smoke & CO Detector	
Smoke Detector	
Switch	
TV Outlet	
Thermostat	
Wall Mount Light	



Trusted Quality and Service
Since 1949

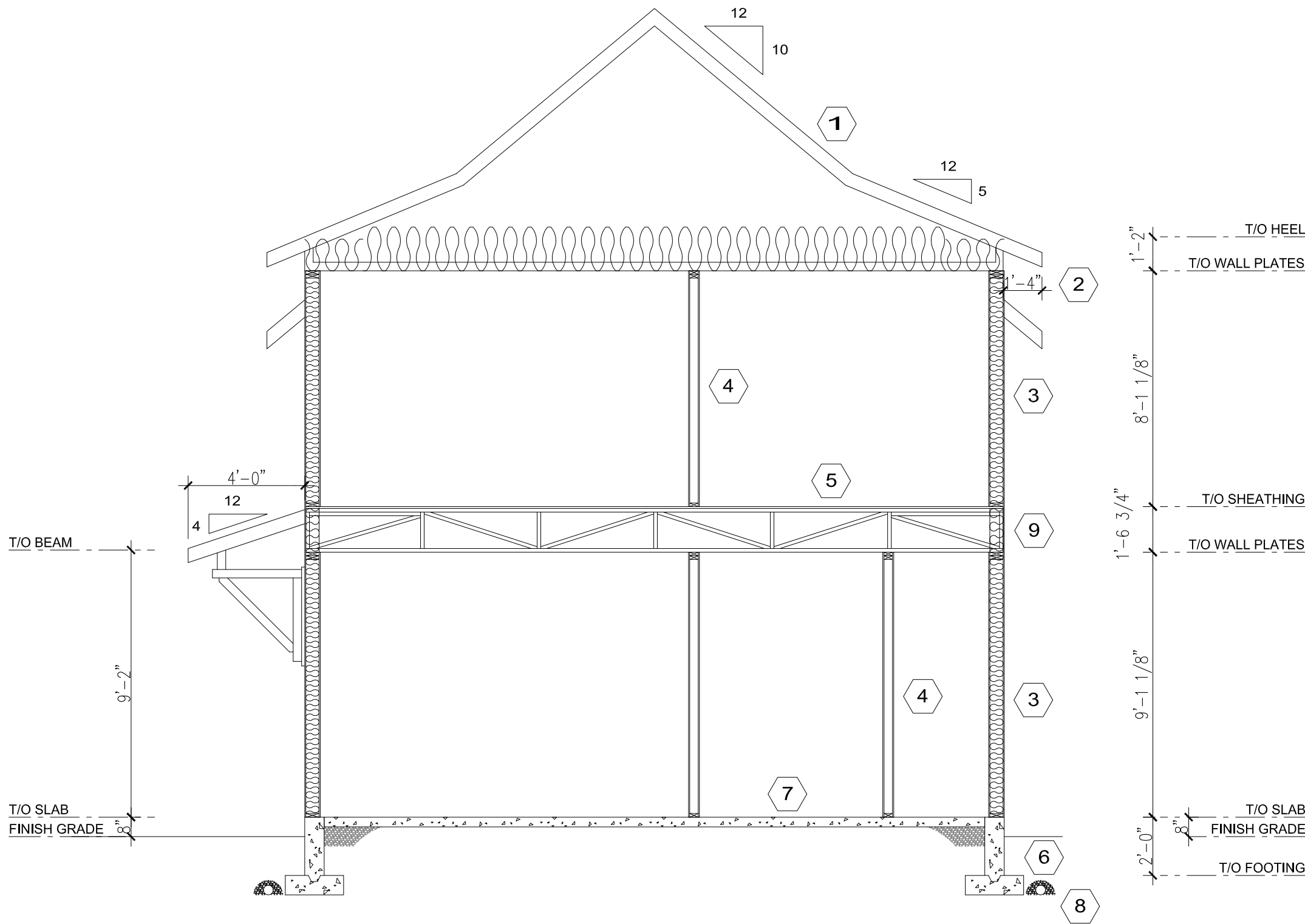
Head Office: Highway 16 West & RR 15
Mail: 6609-44 St., Lloydminster, AB T9V 2X1
www.nlc.ca

PROJECT: HARRIS & BARBINA GARAGE

NH PROJECT No.: M0660

LOCATION: 36 WHARF STREET,
BLUFFTON, SC

SIZE: 1200 SQ FT	8 OF 11
DRAWN BY: KJC 02/25/2025	



BUILDING SECTION A
SCALE: 1/4" = 1'-0"

- 1 ROOF SYSTEM**
METAL ROOFING
SYNTHETIC MEMBRANE ROOF UNDERLAYMENT
OVER ENTIRE ROOF
5/8" PLYWOOD ROOF SHEATHING c/w H-CLIPS
PRE-ENGINEERED TRUSSES @ 24" o.c.
TRUSS BRACING AS PER MANUFACTURERS
RECOMMENDATIONS
R40 FIBREGLASS BATT INSULATION
INSULATION STOPS AT EAVES
6 mil POLY V.B.
5/8" CD DRYWALL

- 2 EAVES**
2x6 EXPOSED TAILS
(NO SOFFIT OR FASCIA)

- 3 EXTERIOR WALL**
EXTERIOR FINISH AS PER ELEVATIONS
BUILDING PAPER or HOUSEWRAP
7/16" OSB WALL SHEATHING
2x6 STUDS @ 16" o.c. U.N.O.
R22 FIBREGLASS BATT INSULATION
6 mil POLY V.B.
1/2" DRYWALL

- 4 INTERIOR WALL**
1/2" DRYWALL
2x4 STUDS U.N.O. @ 16" o.c.
1/2" DRYWALL

- 5 FLOOR SYSTEM**
FINISHED FLOORING
3/8" OVERLAY (OPTIONAL)
3/4" T & G FIR PLYWOOD FLOOR SHEATHING
18" FLOOR TRUSSES @ 16.0" o.c.
5/8" CD DRYWALL

- 6 FOUNDATION WALL**
DAMPPROOF EXTERIOR BELOW GRADE
PARGING ABOVE GRADE
CONCRETE FOUNDATION WALL
(SIZE AND REINFORCING BY P. ENG.) on
CONTINUOUS CONCRETE FOOTING
(SIZE AND REINFORCING BY P. ENG.)

- 7 SLAB FLOOR**
CONCRETE SLAB ON GRADE
(DESIGN BY OTHERS)
6 mil POLY MOISTURE BARRIER
8" MIN CRUSHED ROCK

- 8 WEEPING TILE**
4" DIA. SOCKED WEEPING TILE IN
6" CRUSHED STONE (CLEAR)
CONNECTED TO SUMP PUMP
OR STORM DRAIN AS REQUIRED
(SLOPE EXCAVATION TO SUMP)

- 9 RIM JOIST INSULATION**
SPRAYFOAM INSULATION c/w FIREGUARD
IN ALL PERIMETER JOIST SPACES.
CONTRACTOR TO ENSURE CONTINUITY OF
INSULATION & AVB REQUIREMENTS ARE MET.

REVISION	DATE	BY
REVISION #1	12/12/2024	KJC
REVISION #2	12/18/2024	KJC
REVISION #3	12/21/2024	KJC
REVISION #4	01/08/2025	KJC
REVISION #5	01/14/2025	KJC
REVISION #6	01/19/2025	KJC
REVISION #7	01/28/2025	KJC
REVISION #8	02/05/2025	KJC
REVISION #9	02/08/2025	KJC

THESE DRAWINGS ARE THE SOLE PROPERTY OF NELSON HOMES AND CAN BE USED FOR COMPLETION OF THIS PROJECT ONLY. DO NOT COPY, MODIFY OR REDISTRIBUTE THESE DRAWINGS WITHOUT WRITTEN CONSENT FROM NELSON HOMES.

ALL CONSTRUCTION TO MEET OR EXCEED ALL LOCAL AND NATIONAL BUILDING CODES.

CONTRACTOR SHALL VERIFY AND BE RESPONSIBLE FOR ALL DIMENSIONS, SPECIFICATIONS AND METHODS OF CONSTRUCTION.

DO NOT SCALE DRAWINGS. REPORT ANY ERRORS OR OMISSIONS TO OWNER BEFORE PROCEEDING.



*Trusted Quality and Service
Since 1949*

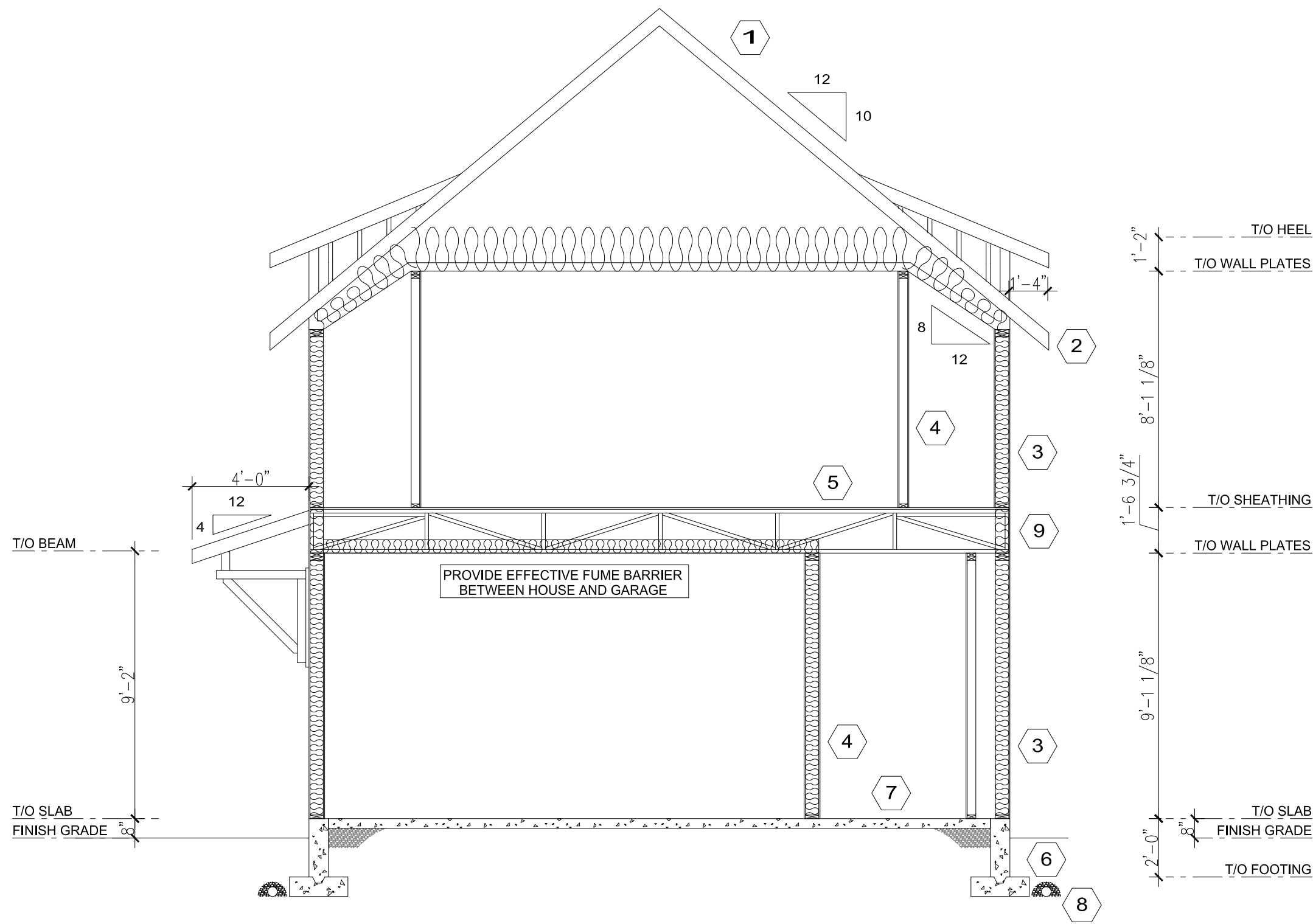
Head Office: Highway 16 West & RR 15
Mail: 6609-44 St., Lloydminster, AB T9V 2X1
www.nlc.ca

PROJECT: HARRIS & BARBINA GARAGE

NH PROJECT No.: M0660

LOCATION: 36 WHARF STREET,
BLUFFTON, SC

SIZE: 1200 SQ FT	9 OF 11
DRAWN BY: KJC 02/25/2025	



BUILDING SECTION B
SCALE: 1/4" = 1'-0"

REVISION	DATE	BY
REVISION #1	12/12/2024	KJC
REVISION #2	12/18/2024	KJC
REVISION #3	12/21/2024	KJC
REVISION #4	01/08/2025	KJC
REVISION #5	01/14/2025	KJC
REVISION #6	01/19/2025	KJC
REVISION #7	01/28/2025	KJC
REVISION #8	02/05/2025	KJC
REVISION #9	02/08/2025	KJC

THESE DRAWINGS ARE THE SOLE PROPERTY OF NELSON HOMES AND CAN BE USED FOR COMPLETION OF THIS PROJECT ONLY. DO NOT COPY, MODIFY OR REDISTRIBUTE THESE DRAWINGS WITHOUT WRITTEN CONSENT FROM NELSON HOMES.

ALL CONSTRUCTION TO MEET OR EXCEED ALL LOCAL AND NATIONAL BUILDING CODES.

CONTRACTOR SHALL VERIFY AND BE RESPONSIBLE FOR ALL DIMENSIONS, SPECIFICATIONS AND METHODS OF CONSTRUCTION.

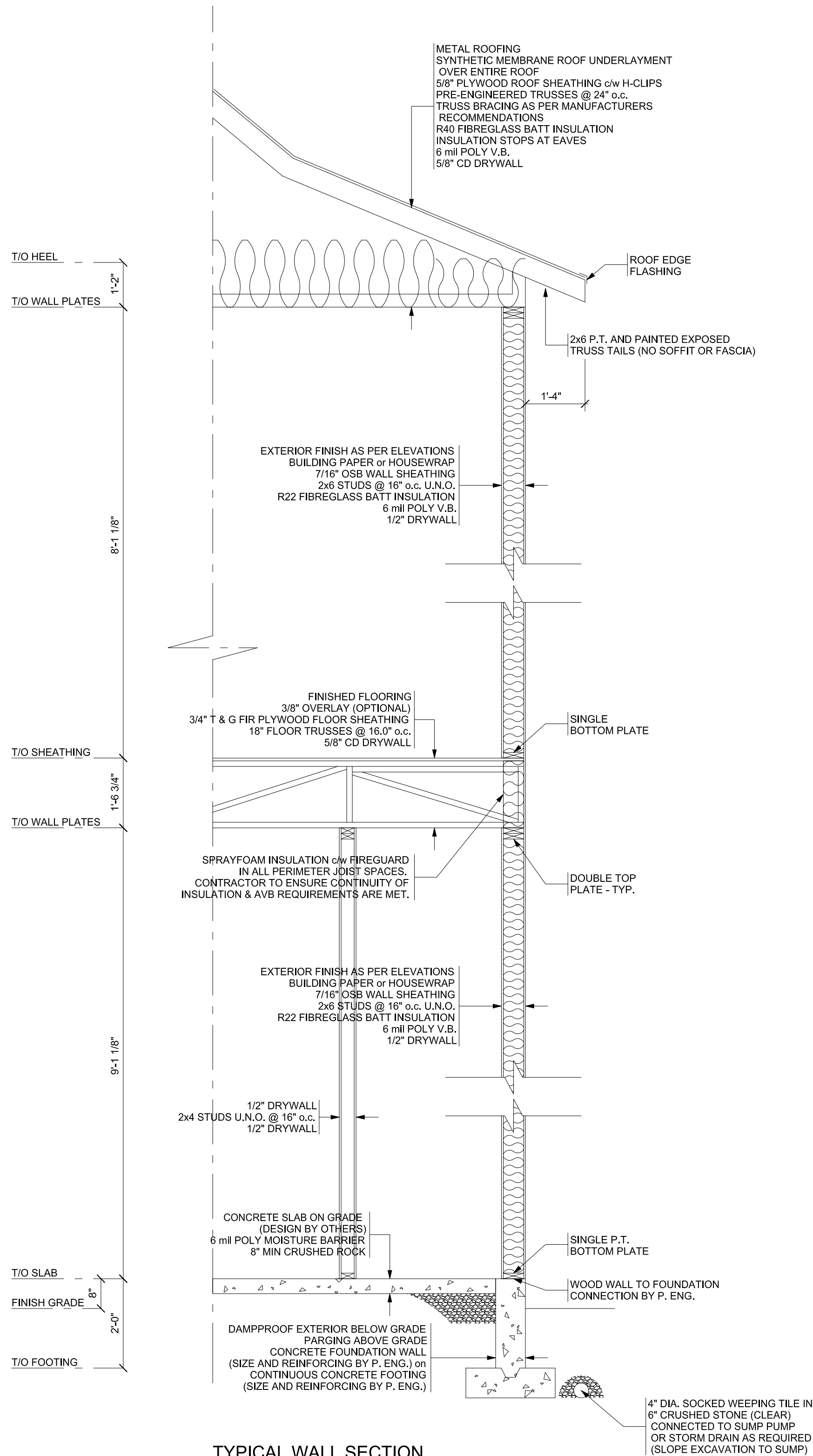
DO NOT SCALE DRAWINGS. REPORT ANY ERRORS OR OMISSIONS TO OWNER BEFORE PROCEEDING.



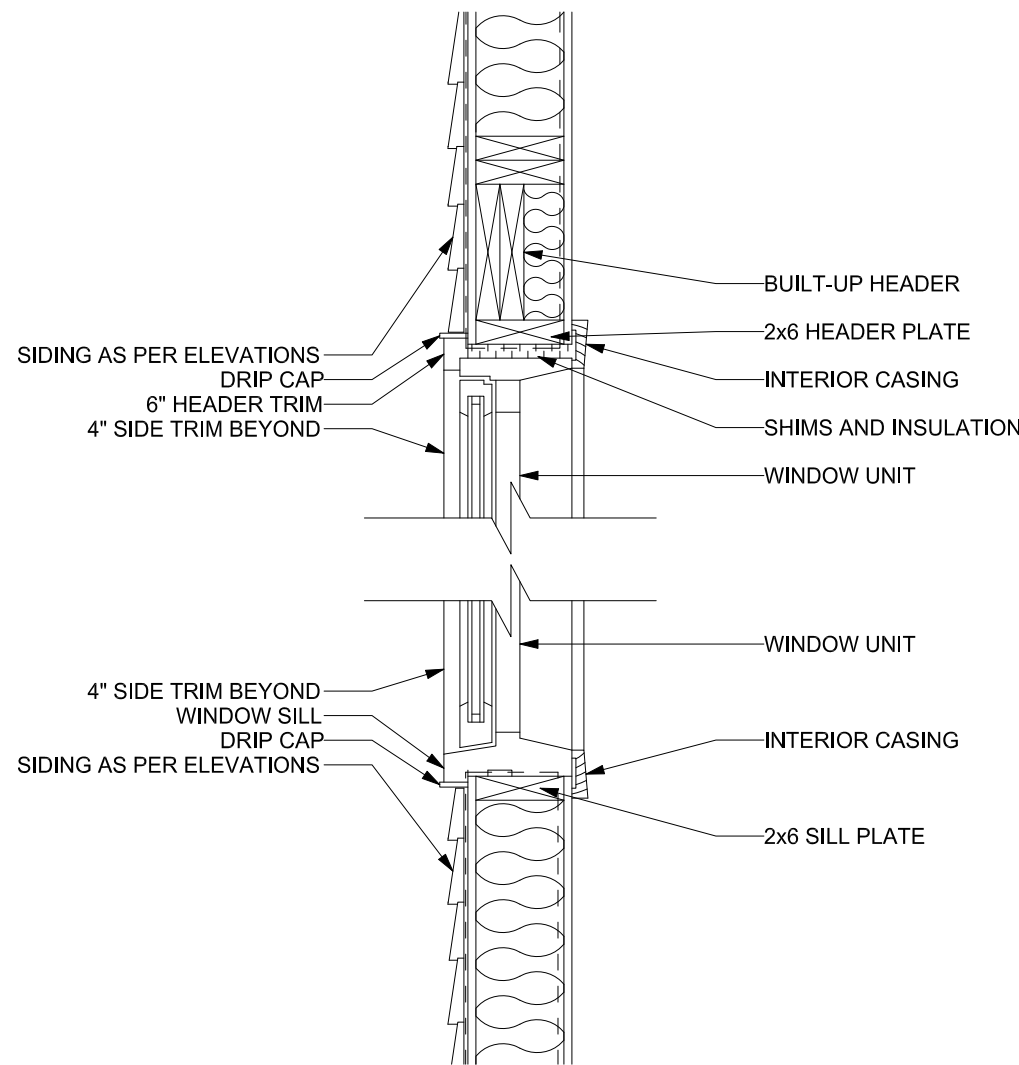
Trusted Quality and Service
Since 1949

Head Office: Highway 16 West & RR 15
Mail: 6609-44 St., Lloydminster, AB T9V 2X1
www.nlc.ca

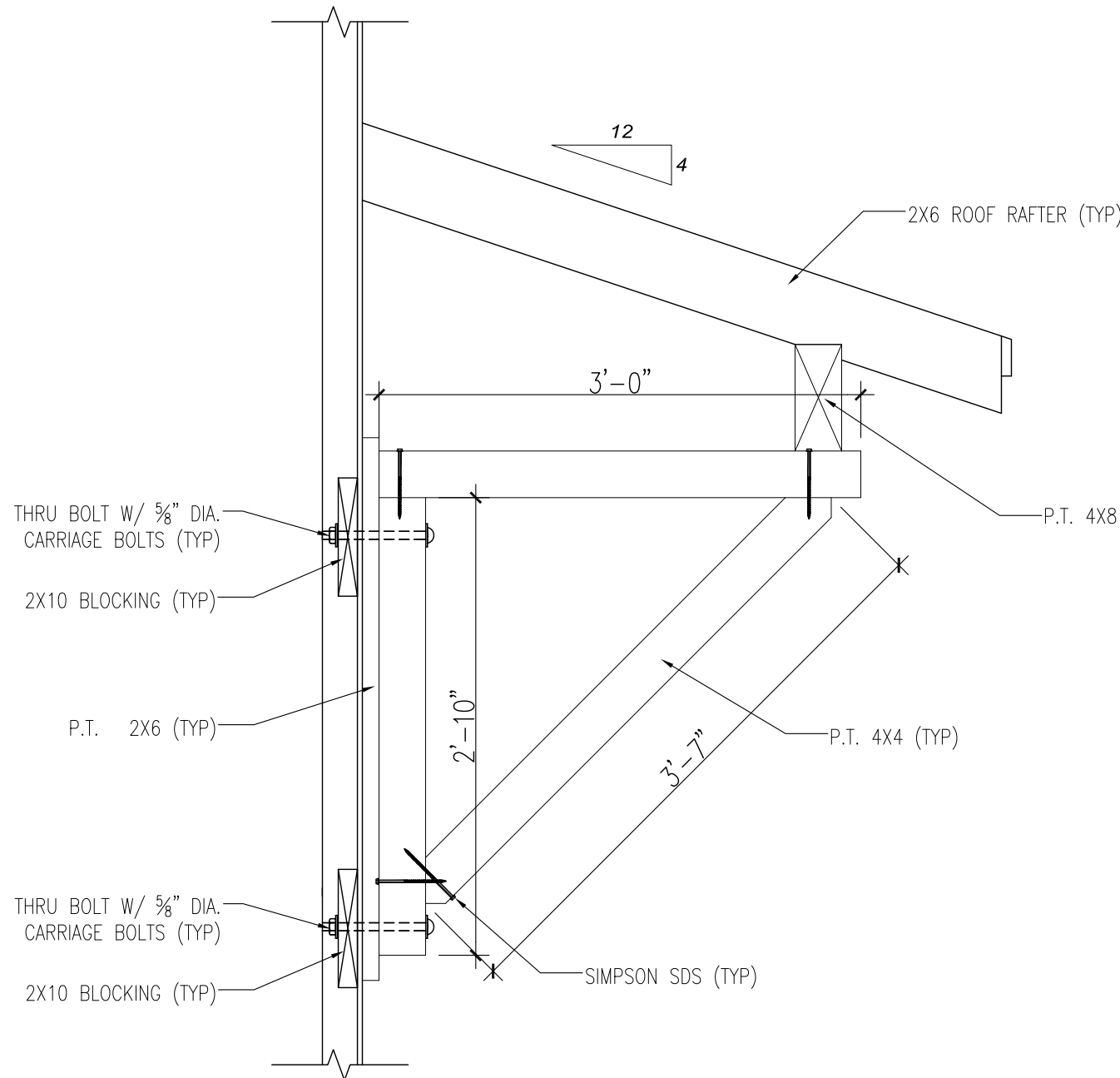
PROJECT: HARRIS & BARBINA GARAGE	
NH PROJECT No.: M0660	
LOCATION: 36 WHARF STREET, BLUFFTON, SC	
SIZE: 1200 SQ FT	10 OF 11
DRAWN BY: KJC 02/25/2025	



TYPICAL WALL SECTION
SCALE: 1/2" = 1'-0"



TYPICAL WINDOW HEADER & SILL DETAIL
NTS



BRACKET DETAIL
1" = 1'-0"

REVISION	DATE	BY
REVISION #1	12/12/2024	KJC
REVISION #2	12/18/2024	KJC
REVISION #3	12/21/2024	KJC
REVISION #4	01/08/2025	KJC
REVISION #5	01/14/2025	KJC
REVISION #6	01/19/2025	KJC
REVISION #7	01/28/2025	KJC
REVISION #8	02/05/2025	KJC
REVISION #9	02/08/2025	KJC

THESE DRAWINGS ARE THE SOLE PROPERTY OF NELSON HOMES AND CAN BE USED FOR COMPLETION OF THIS PROJECT ONLY. DO NOT COPY, MODIFY OR REDISTRIBUTE THESE DRAWINGS WITHOUT WRITTEN CONSENT FROM NELSON HOMES.

ALL CONSTRUCTION TO MEET OR EXCEED ALL LOCAL AND NATIONAL BUILDING CODES.

CONTRACTOR SHALL VERIFY AND BE RESPONSIBLE FOR ALL DIMENSIONS, SPECIFICATIONS AND METHODS OF CONSTRUCTION.

DO NOT SCALE DRAWINGS. REPORT ANY ERRORS OR OMISSIONS TO OWNER BEFORE PROCEEDING.



Trusted Quality and Service
Since 1949

Head Office: Highway 16 West & RR 15
Mail: 6609-44 St., Lloydminster, AB T9V 2X1
www.nlc.ca

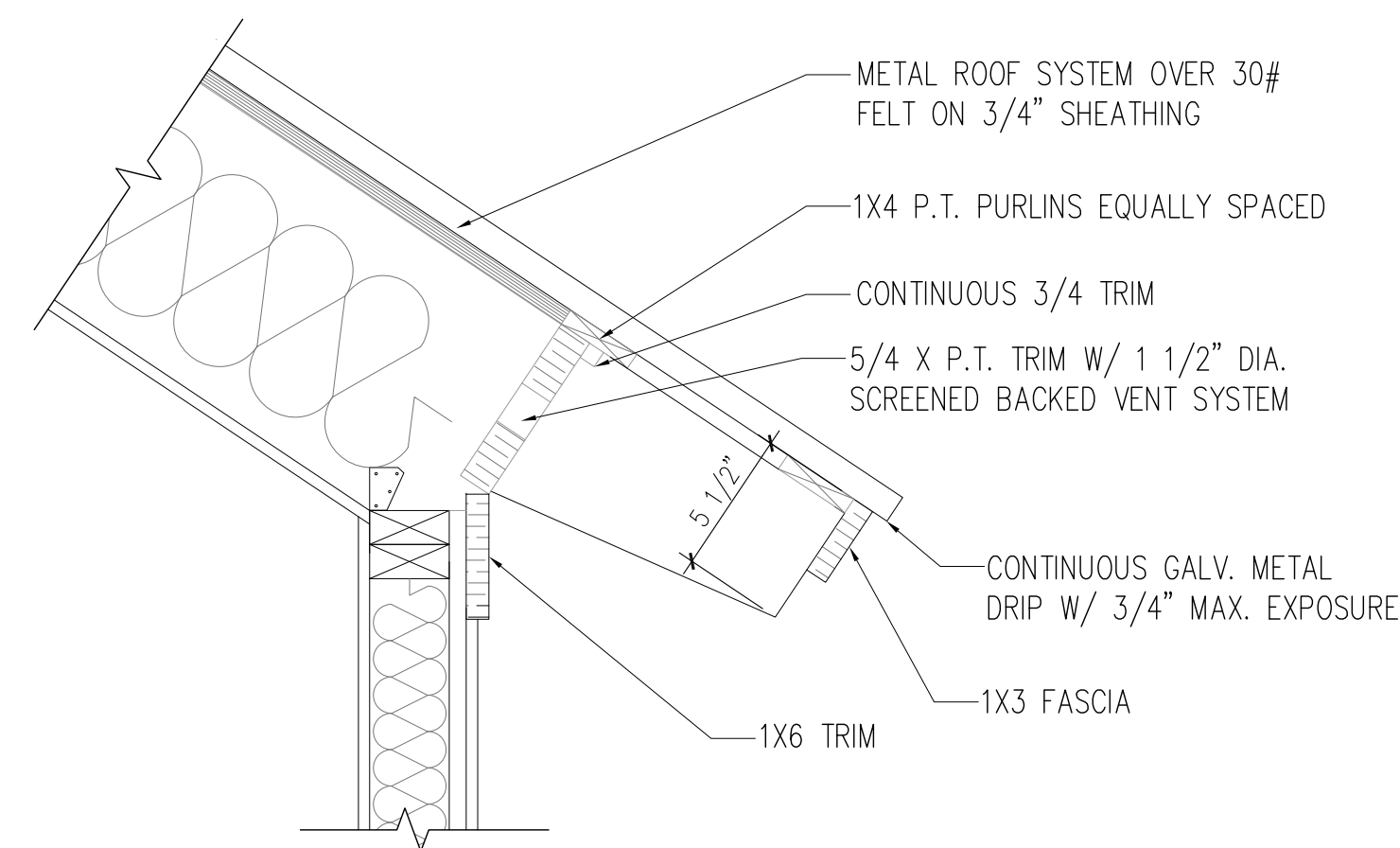
PROJECT: HARRIS & BARBINA GARAGE

NH PROJECT No.: M0660

LOCATION: 36 WHARF STREET,
BLUFFTON, SC

SIZE: 1200 SQ FT

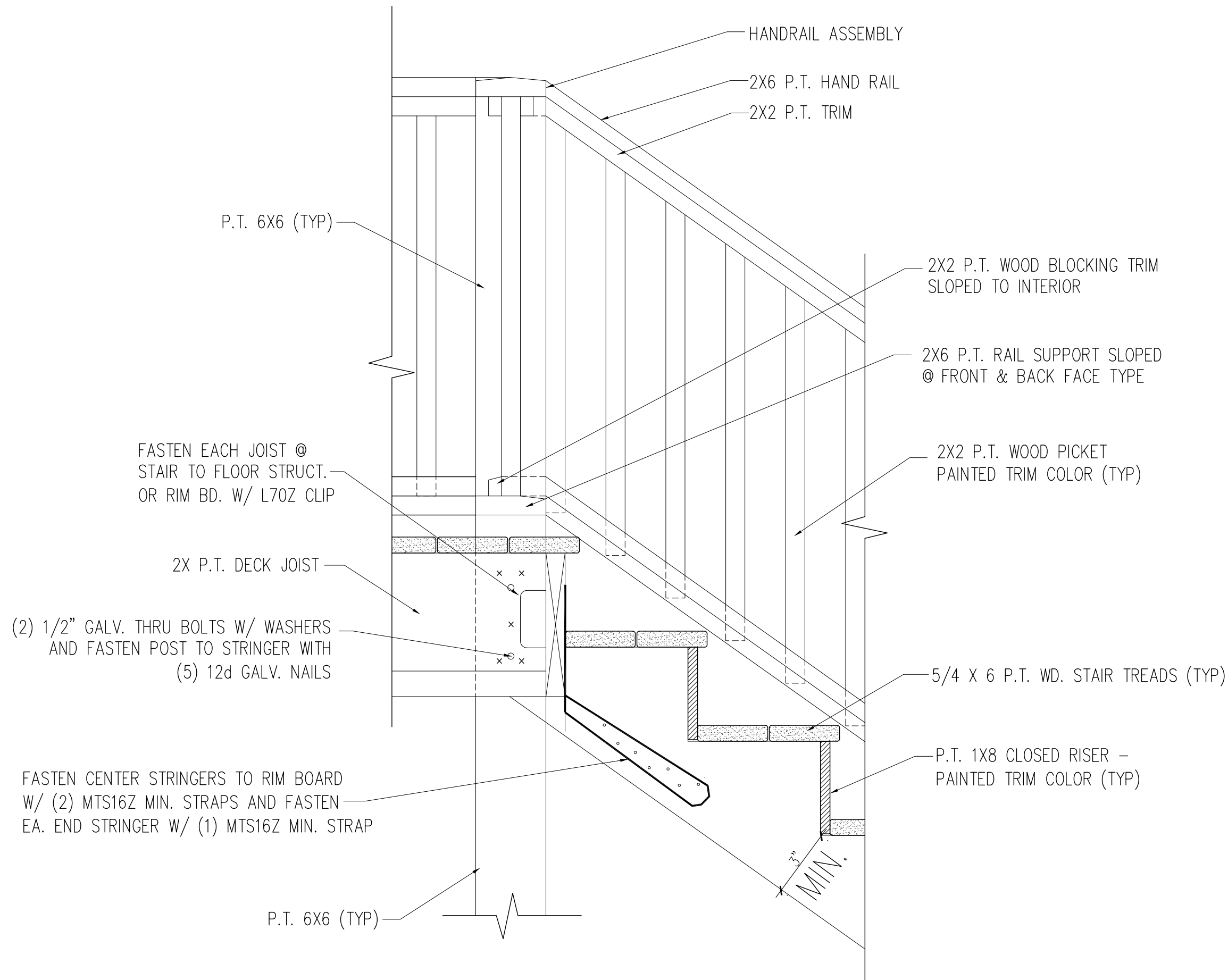
DRAWN BY: KJC 02/25/2025



NOTE: ALL EAVE AND TRIM DETAILS TO MATCH EXISTING HOUSE

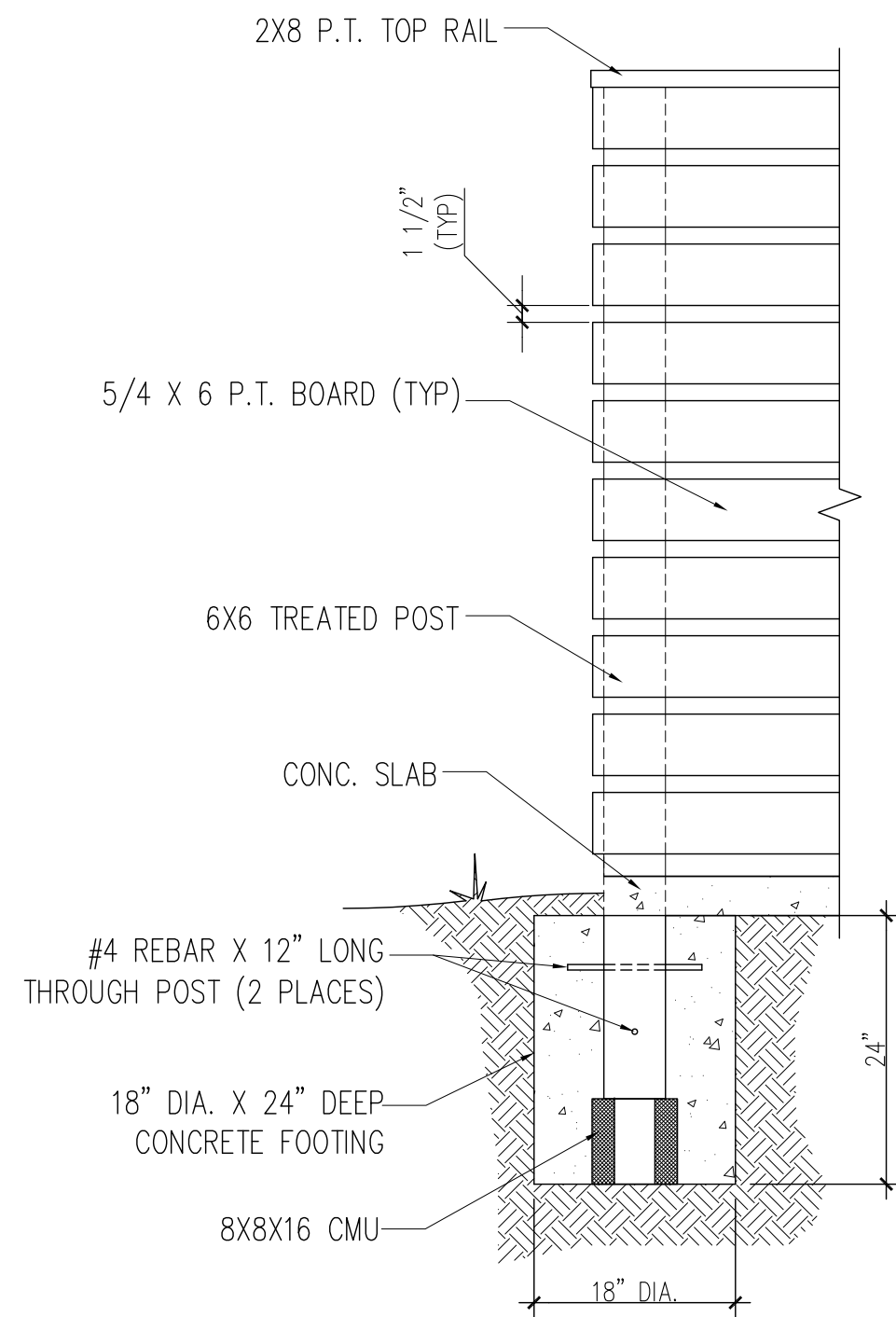
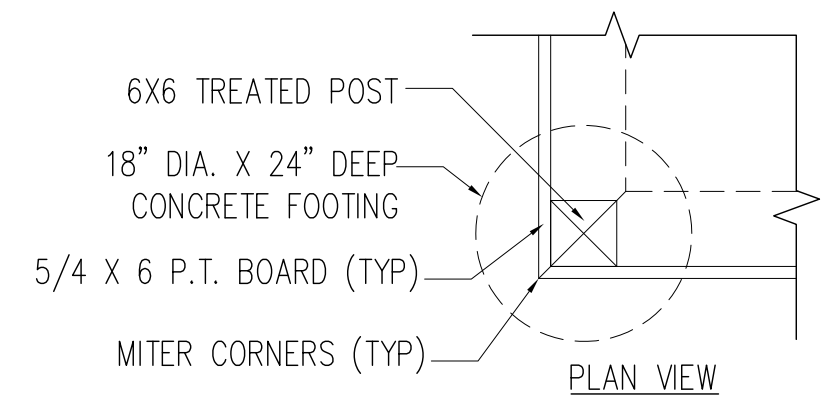
TYPICAL EAVE DETAIL

1 1/2" = 1'-0"



STAIR DETAIL

1 1/2" = 1'-0"



SERVICE YARD DETAIL

3/4" = 1'-0"

PROJECT: HARRIS & BARBINA GARAGE		
NH PROJECT No.: M0660		
LOCATION: 36 WHARF STREET, BLUFFTON, SC		
SIZE: 1200 SQ FT	SHEET 12	
DRAWN BY: MM		
	10/20/25	