

PROJECT INFO

Date
2022.08.18
Project No.
21-111

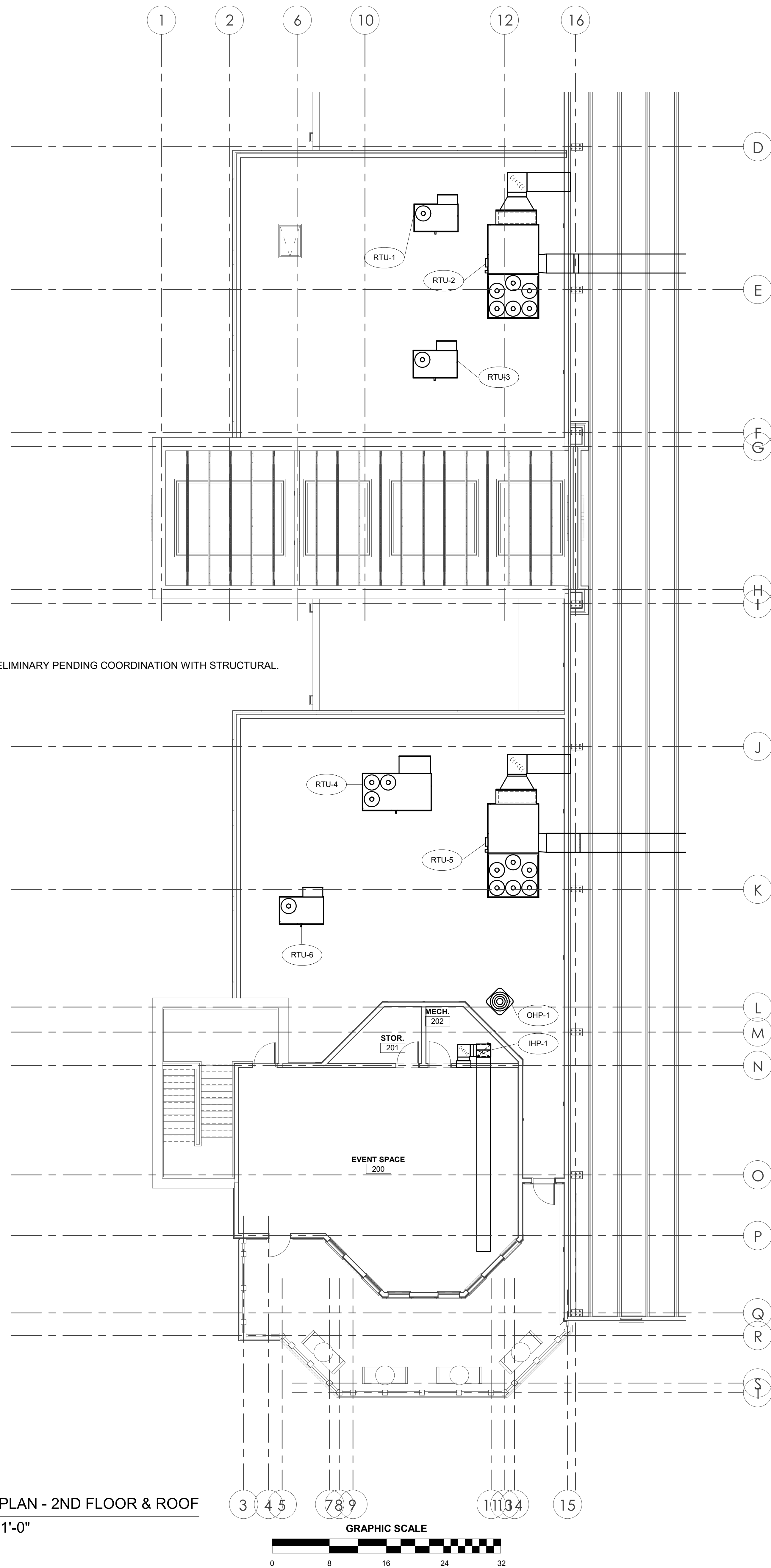
ISSUE

NO. REV. DATE DESCRIPTION

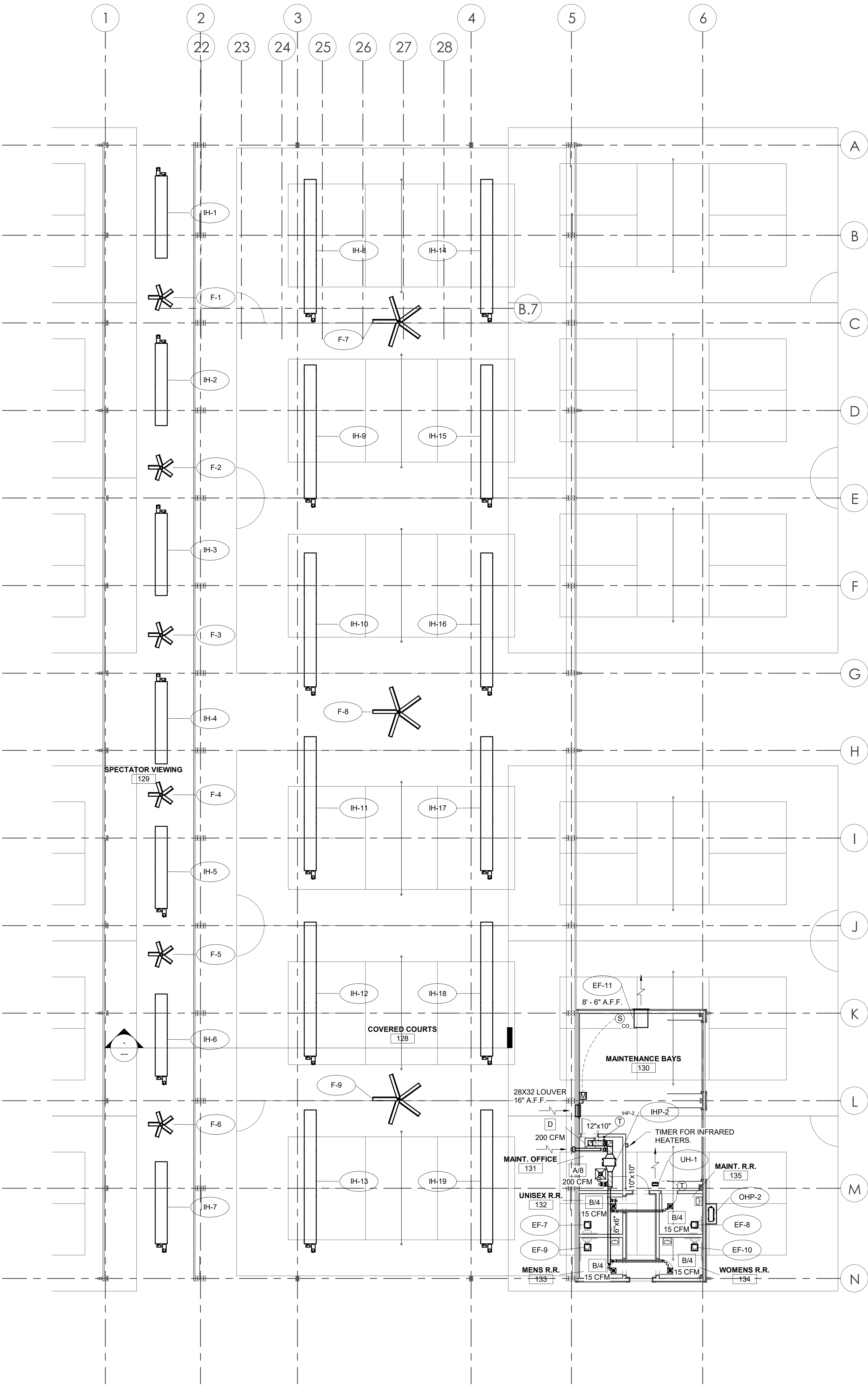
SHEET TITLE

HVAC PLAN - 2ND
FLOOR, ROOF, &
MAINTENANCE

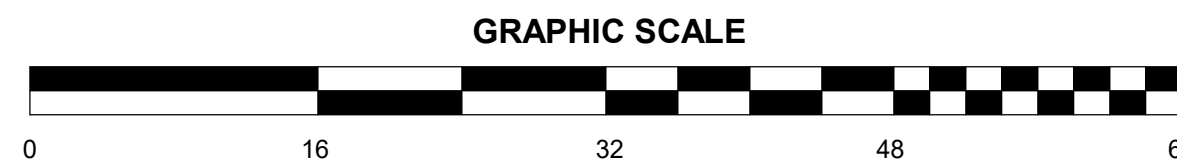
M1.1



1
M1.1 HVAC PLAN - 2ND FLOOR & ROOF
1/8" = 1'-0"



2
M1.1 HVAC PLAN - MAINTENANCE
3/32" = 1'-0"



Unit Report For RTU-20T

Project: DELTA - Bluffton Pickleball Club
Prepared By:

05/26/2022
04:16PM

Unit Parameters

Unit Model:.....**48LCDA24E6M6-0R4C0**
Unit Size:.....**24 (20 Tons)**
Volts-Phase-Hertz:.....**460-3-60**
Heating Type:.....**Gas**
Duct Cfg:.....**Horizontal Supply / Horizontal Return**
Low Gas Heat
Three stage cooling capacity control with TXV and Humidi-MiZer

Dimensions (ft. in.) & Weight (lb.) ***

Unit Length:.....**13' 1.75"**
Unit Width:.....**7' 2.375"**
Unit Height:.....**4' 10.5"**
*** Total Operating Weight:.....**2918 lb**

*** Weights and Dimensions are approximate. Weight does not include unit packaging. Approximate dimensions are provided primarily for shipping purposes. For exact dimensions and weights, refer to appropriate product data catalog.

Unit Configuration

CO2 Sensor
Medium Static Option - Horizontal Models with VFD controller
Al/Cu - Al/Cu - Louvered Hail Guards
Electro Mechanical Controls
Enthy. Ultra Low Leak EconoMi\$er w/ Baro relief
Hinged Access Panels and Unpowered Convenience Outlet
Non-Fused Disconnect
Standard Packaging
Humidi-MiZer™ Adaptive Dehumidification System

Warranty Information

1-Year parts
5-Year compressor parts
10-Year heat exchanger - Aluminized
Complete Unit Year 2-5 Parts Only

NOTE: Please see Warranty Catalog 500-089 for explanation of policies and ordering methods.

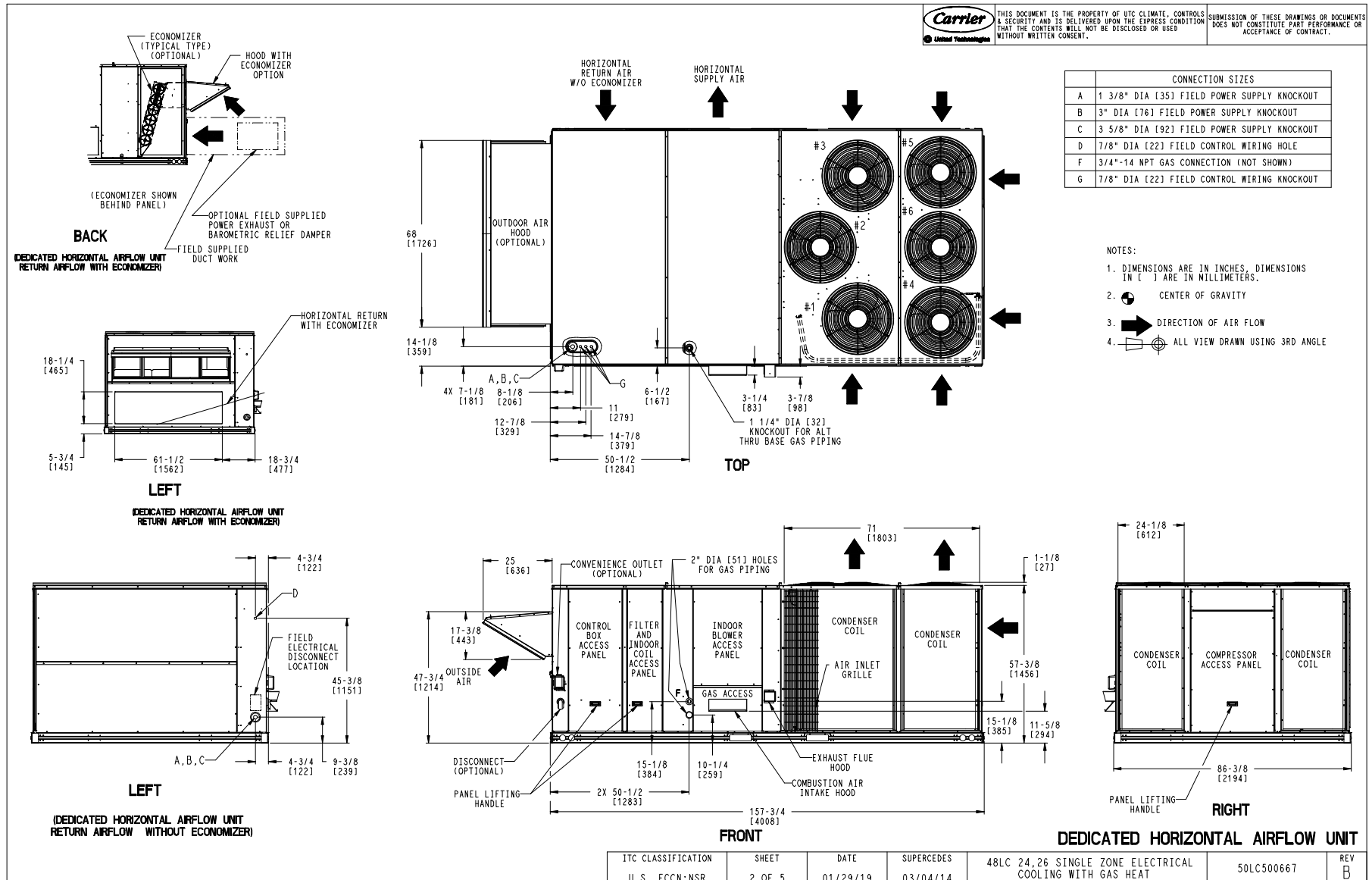
Ordering Information

Part Number	Description	Quantity
48LCDA24E6M6-0R4C0	Rooftop Unit	2
Field Installed Accessories		
16X25X2-M13-R-P9	16x25x2 MERV-13 replacement air filters	2
33CONNECTSTAT43	Carrier Connect™ Wi-Fi® 7-day programmable/non-prog	2
CRBARHOD001A00	Barometric Hood	2
CRDISKIT002A00	2 Speed VFD display kit	2
Blanket Quote Controls		
CMU21-00007	Phase Loss Monitor	2

Certified Drawing for RTU-20T

Project: DELTA - Bluffton Pickleball Club
Prepared By:

05/26/2022
04:16PM



ATTACHMENT 7

Certified Drawing for RTU-20T

Project: DELTA - Bluffton Pickleball Club
Prepared By:

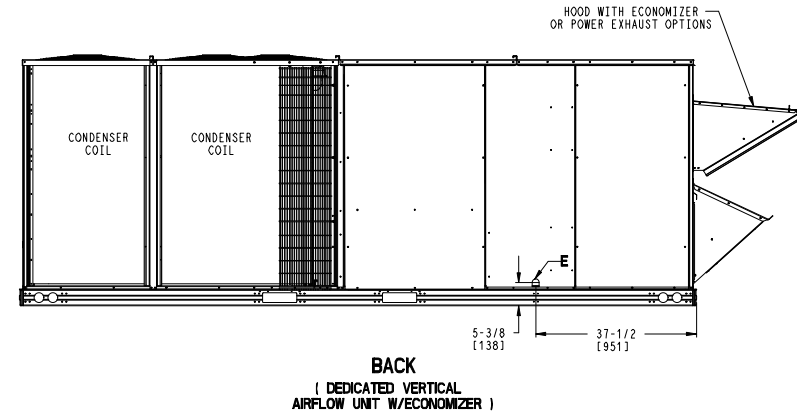
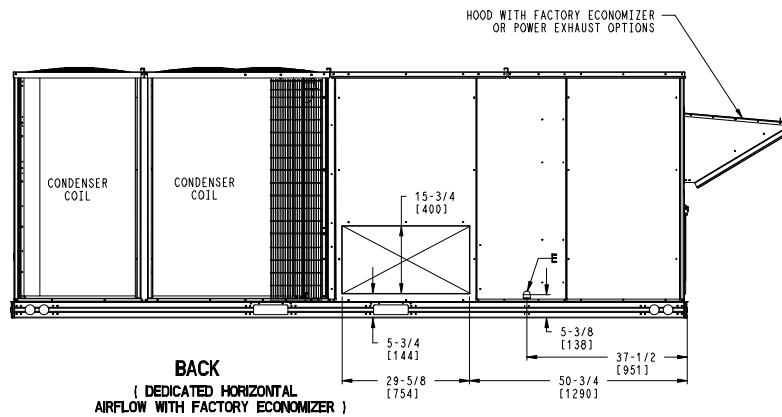
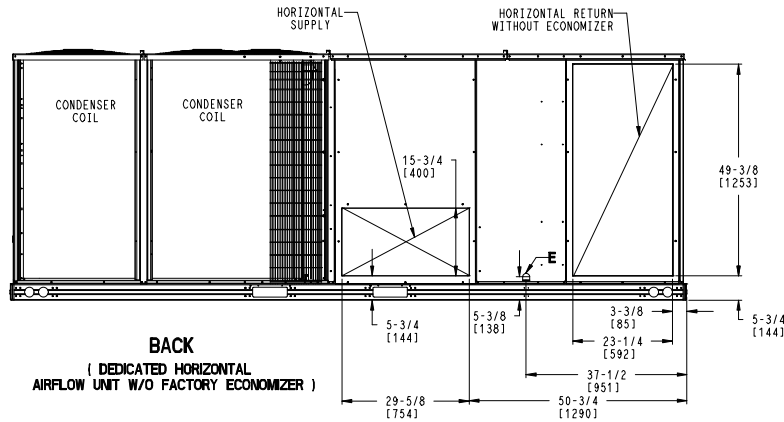
05/26/2022
04:16PM

CONNECTION SIZES	
E	3/4"-14 NPT CONDENSATE DRAIN



THIS DOCUMENT IS THE PROPERTY OF UTC CLIMATE, CONTROLS & SECURITY AND IS DELIVERED UPON THE EXPRESS CONDITION THAT THE CONTENTS WILL NOT BE DISCLOSED OR USED WITHOUT WRITTEN CONSENT.

SUBMISSION OF THESE DRAWINGS OR DOCUMENTS DOES NOT CONSTITUTE PART PERFORMANCE OR ACCEPTANCE OF CONTRACT.



ITC CLASSIFICATION	SHEET	DATE	SUPERCEDES	48LC 24,26 SINGLE ZONE ELECTRICAL COOLING WITH GAS HEAT	50LC500667	REV
U.S. ECCN:NSR	3 OF 5	01/29/19	03/04/14			B

ATTACHMENT 7

Certified Drawing for RTU-20T

Project: DELTA - Bluffton Pickleball Club
Prepared By:

05/26/2022
04:16PM

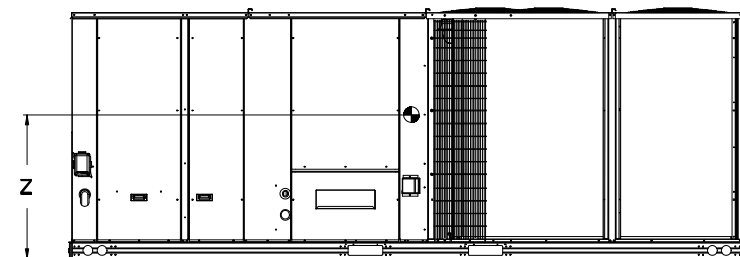
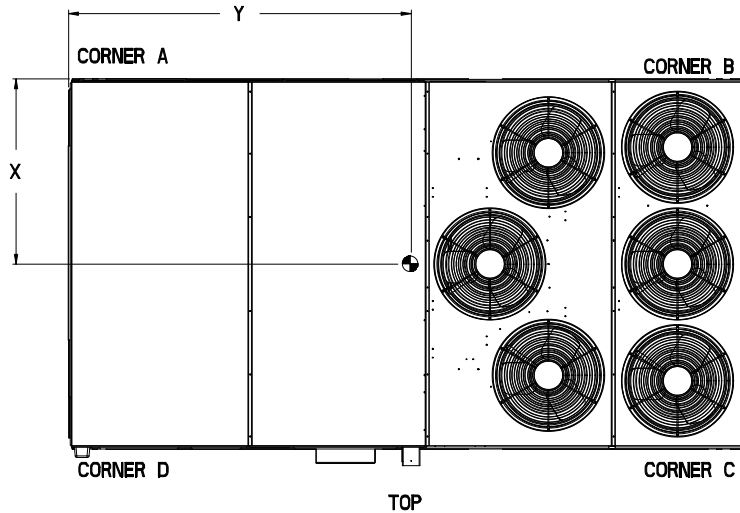
UNIT	STD UNIT WEIGHT *		CORNER WEIGHT (A)		CORNER WEIGHT (B)		CORNER WEIGHT (C)		CORNER WEIGHT (D)		C.G.		
	LBS.	KG.	LBS.	KG.	LBS.	KG.	LBS.	KG.	LBS.	KG.	X	Y	Z
48LC24	2347	1067.0	485.0	220.4	568.8	258.5	715.5	325.2	610.1	277.3	48 [1219.20]	85 1/32 [2159.79]	19 [482.6]
48LC26	2492	1132.6	563.2	256.0	627.7	285.3	702.4	319.3	630.3	286.5	45 1/2 [1155.70]	83 1/32 [2108.99]	19 [482.6]

* STANDARD UNIT WEIGHT IS WITH LOW GAS HEAT AND WITHOUT PACKAGING.
FOR OTHER OPTIONS AND ACCESSORIES REFER TO THE PRODUCT DATA CATALOG.



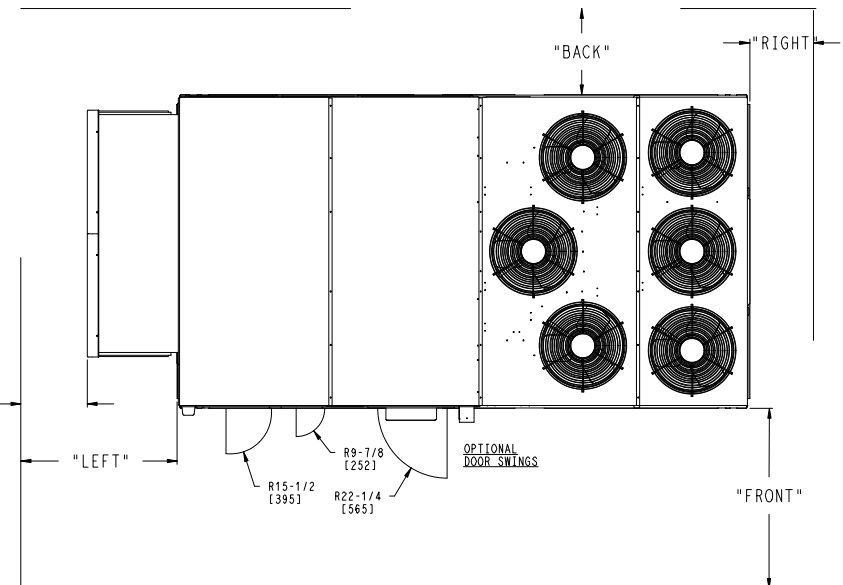
THIS DOCUMENT IS THE PROPERTY OF UTC CLIMATE, CONTROLS & SECURITY AND IS DELIVERED UPON THE EXPRESS CONDITION THAT THE CONTENTS WILL NOT BE DISCLOSED OR USED WITHOUT WRITTEN CONSENT.

SUBMISSION OF THESE DRAWINGS OR DOCUMENTS DOES NOT CONSTITUTE PART PERFORMANCE OR ACCEPTANCE OF CONTRACT.



FRONT

"LEFT WITH HOOD"



NOTES:

1. CLEARANCE ABOVE THE UNIT TO BE 72"
2. FOR ALL MINIMUM CLEARANCES LOCAL CODES OR JURISDICTIONS MAY PREVAIL.

SURFACE	CLEARANCE		OPERATING CLEARANCE
	SERVICE WITH: CONDUCTIVE BARRIER	SERVICE WITH: NONCONDUCTIVE BARRIER	
FRONT	48 [1219mm]	36 [914mm]	18 [457mm]
LEFT	48 [1219mm]	42 [1067mm]	18 [457mm]
BACK	42 [1067mm]	36 [914mm]	18 [457mm]
LEFT WITH HOOD	36 [914mm]	36 [914mm]	18 [457mm]
RIGHT	36 [914mm]	36 [914mm]	18 [457mm]
TOP	72 [1829mm]	72 [1829mm]	72 [1829mm]

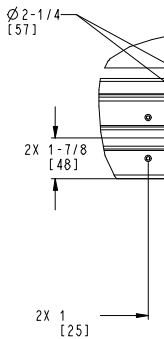
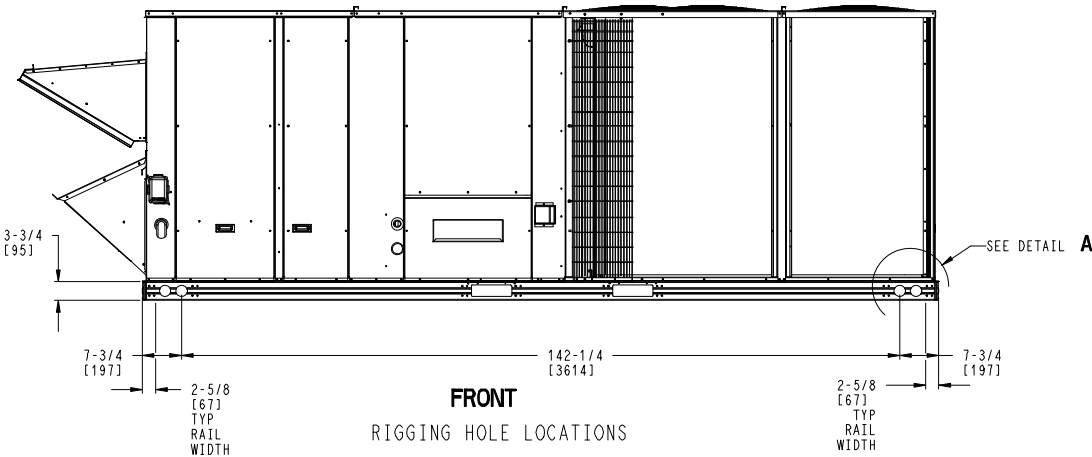
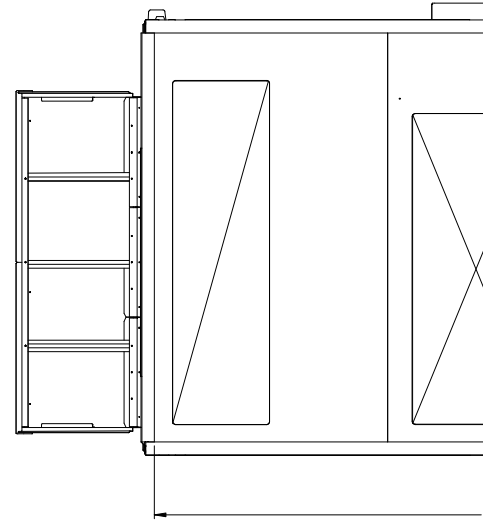
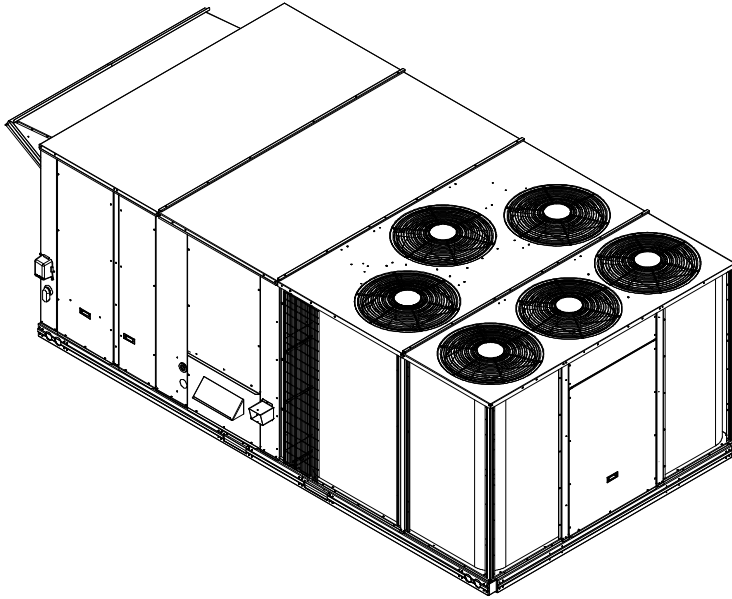
ITC CLASSIFICATION U.S. ECCN:NSR	SHEET 4 OF 5	DATE 01/29/19	SUPERCEDES 03/04/14	48LC 24,26 SINGLE ZONE ELECTRICAL COOLING WITH GAS HEAT	50LC500667	REV B
-------------------------------------	-----------------	------------------	------------------------	---	------------	----------

ATTACHMENT 7

Performance Summary For RTU-20T

Project: DELTA - Bluffton Pickleball Club
Prepared By:

05/26/2022
04:16PM



ITC CLASSIFICATION	SHEET	DATE	SUPERCEDES	48
U.S. ECCN:NSR	5 OF 5	01/29/19	03/04/14	

Part Number:48LCDA24E6M6-0R4C0

ARI EER:.....**10.94**
IEER (Max Cooling at Normal Cooling Design Mode):.....**17.1**

Base Unit Dimensions

Unit Length:.....**157.8** in
Unit Width:.....**86.4** in
Unit Height:.....**58.5** in

Operating Weight

ATTACHMENT 7

Unit Report For RTU-8.5T

Project: DELTA - Bluffton Pickleball Club
Prepared By:

05/26/2022
04:16PM

Unit Parameters

Unit Model:.....**48LCSA09J3M6-0R4F0**
Unit Size:.....**09 (8.5 Tons)**
Volts-Phase-Hertz:.....**460-3-60**
Heating Type:.....**Gas**
Duct Cfg:.....**Vertical Supply / Vertical Return**
Low Heat with Stainless Steel HX
Three stage cooling capacity control with TXV and Humidi-MiZer

Dimensions (ft. in.) & Weight (lb.) ***

Unit Length:.....**9' 7.875"**
Unit Width:.....**5' 3.375"**
Unit Height:.....**4' 10.75"**
*** Total Operating Weight:.....**2098 lb**

*** Weights and Dimensions are approximate. Weight does not include unit packaging. Approximate dimensions are provided primarily for shipping purposes. For exact dimensions and weights, refer to appropriate product data catalog.

Unit Configuration

Condensate Overflow Switch
High Static Belt Drive with VFD Controller
Al/Cu - Al/Cu - Louvered Hail Guards
Electro Mechanical Controls
Ultra LOW LEAK Enthalpy EconoMi\$er with barometric relief
Hinged Access Panels and Unpowered Convenience Outlet
Non-Fused Disconnect and Thru-The-Base Connections
Standard Packaging
Humidi-MiZer™ Adaptive Dehumidification System

Warranty Information

1-Year parts
5-Year compressor parts
15-Year heat exchanger - Stainless Steel
Complete Unit Year 2-5 Parts Only

NOTE: Please see Warranty Catalog 500-089 for explanation of policies and ordering methods.

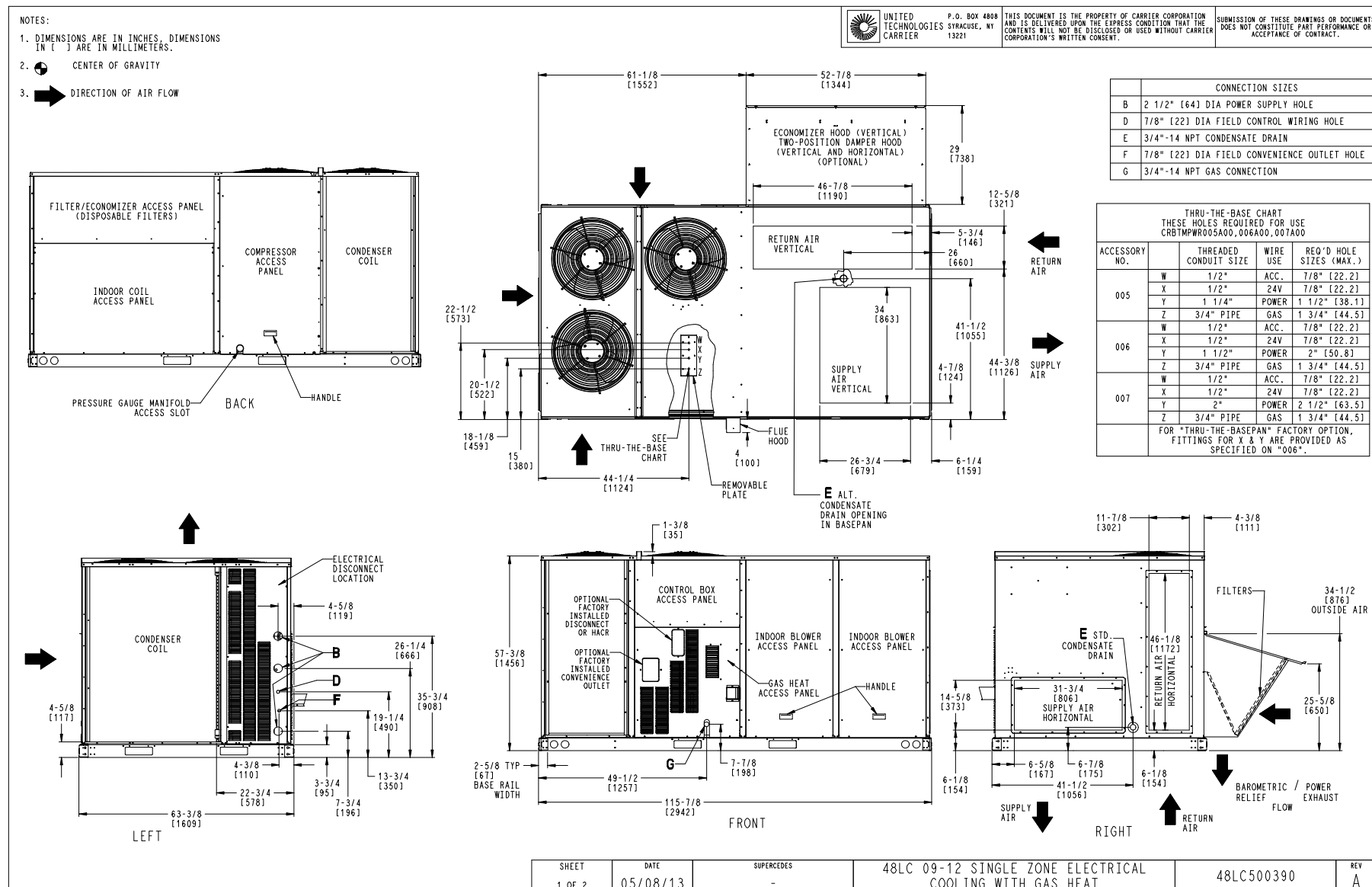
Ordering Information

Part Number	Description	Quantity
48LCSA09J3M6-0R4F0	Rooftop Unit	1
Field Installed Accessories		
33CONNECTSTAT43	Carrier Connect™ Wi-Fi® 7-day programmable/non-prog	1
18X24X2-M13-R-P6	18x24x2 MERV-13 replacement air filters	1
CRRFCURB074A00	14-inch Roof Curb	1
CRDISKIT002A00	2 Speed VFD display kit	1
Blanket Quote Controls		
CMU21-00007	Phase Loss Monitor	1

Certified Drawing for RTU-8.5T

Project: DELTA - Bluffton Pickleball Club
Prepared By:

05/26/2022
04:16PM



ATTACHMENT 7

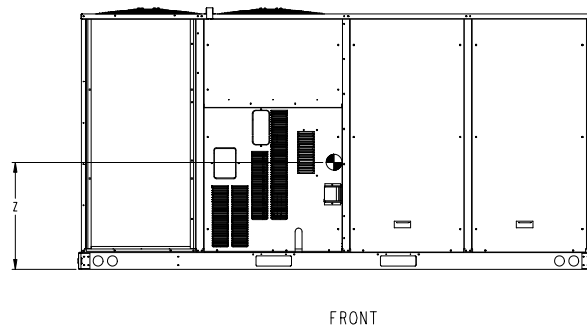
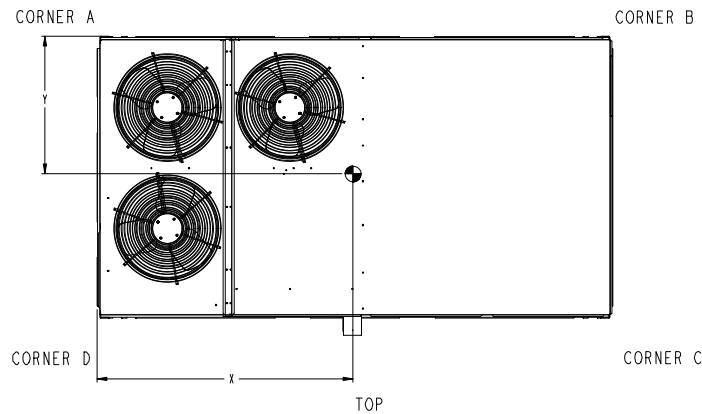
Certified Drawing for RTU-8.5T

Project: DELTA - Bluffton Pickleball Club
Prepared By:

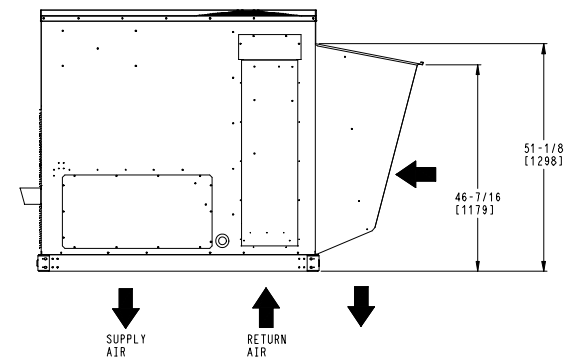
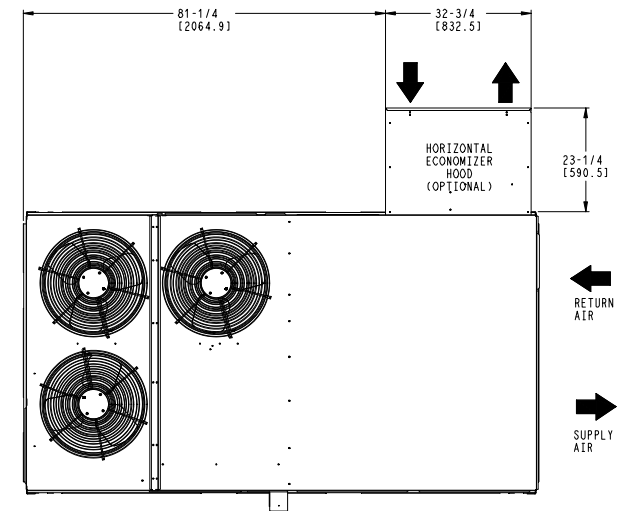
05/26/2022
04:16PM

UNIT	STD UNIT WEIGHT		CORNER WEIGHT (A)		CORNER WEIGHT (B)		CORNER WEIGHT (C)		CORNER WEIGHT (D)		C.G.		
	LBS.	KG.	LBS.	KG.	LBS.	KG.	LBS.	KG.	LBS.	KG.	X	Y	Z
48LC 09	1606	728	406	184	410	186	397	180	393	178	58 [1473]	32 [812]	20 5/8 [524]
48LC 12	1606	728	406	184	410	186	397	180	393	178	58 [1473]	32 [812]	20 5/8 [524]

STANDARD UNIT WEIGHT IS WITH LOW GAS HEAT & WITHOUT PACKAGING.
FOR OPTIONS & ACCESSORIES, REFER TO THE PRODUCT DATA CATALOG.



UNITED TECHNOLOGIES CARRIER	P.O. BOX 4800 SYRACUSE, NY 13221	THIS DOCUMENT IS THE PROPERTY OF CARRIER CORPORATION AND IS DELIVERED UPON THE EXPRESS CONDITION THAT THE CONTENTS WILL NOT BE DISCLOSED OR USED WITHOUT CARRIER CORPORATION'S WRITTEN CONSENT.	SUBMISSION OF THESE DRAWINGS OR DOCUMENTS DOES NOT CONSTITUTE PART PERFORMANCE OR ACCEPTANCE OF CONTRACT.



HORIZONTAL ECONOMIZER

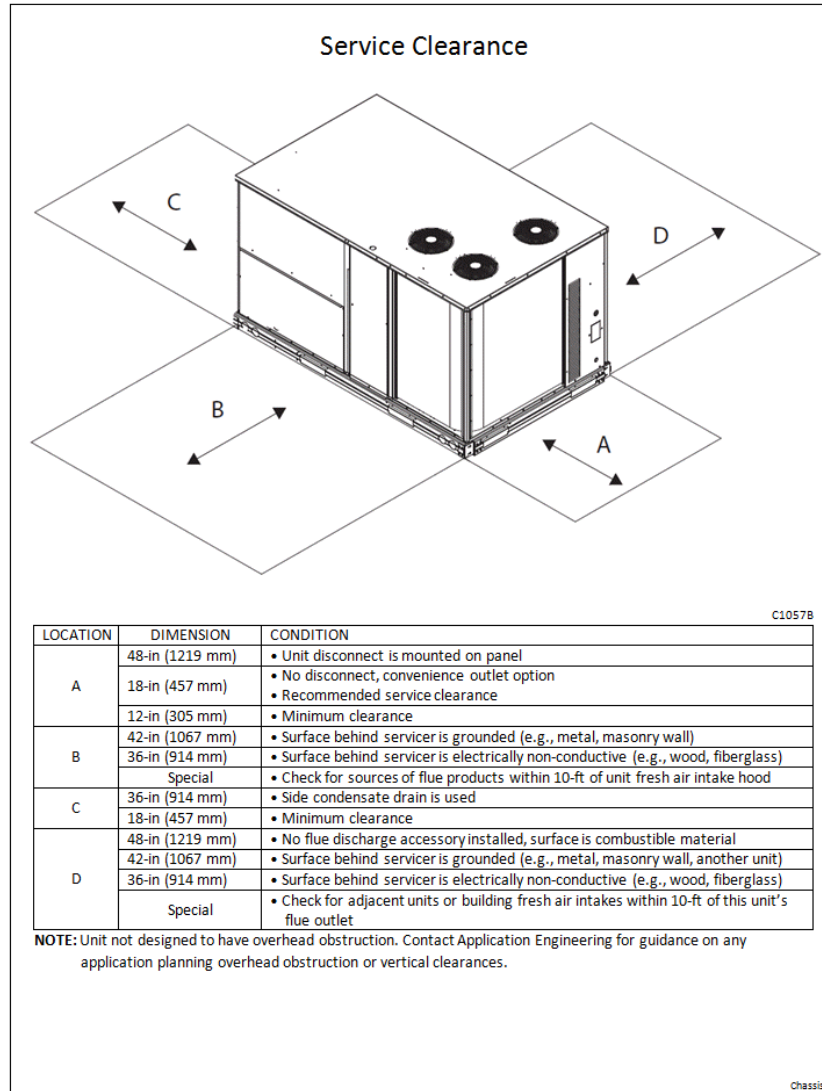
SHEET 2 OF 2	DATE 05/08/13	SUPERCEDES -	48LC 09-12 SINGLE ZONE ELECTRICAL COOLING WITH GAS HEAT	48LC500390	REV A
-----------------	------------------	-----------------	--	------------	----------

ATTACHMENT 7

Certified Drawing for RTU-8.5T

Project: DELTA - Bluffton Pickleball Club
Prepared By:

05/26/2022
04:16PM

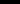


Certified Drawing for RTU-8.5T

Project: DELTA - Bluffton Pickleball Club
Prepared By:

05/26/2022
04:16PM

ROOF CURB ACCESSORY #	A
CRRFCURB074A00	14" [356]
CRRFCURB075A00	24" [610]

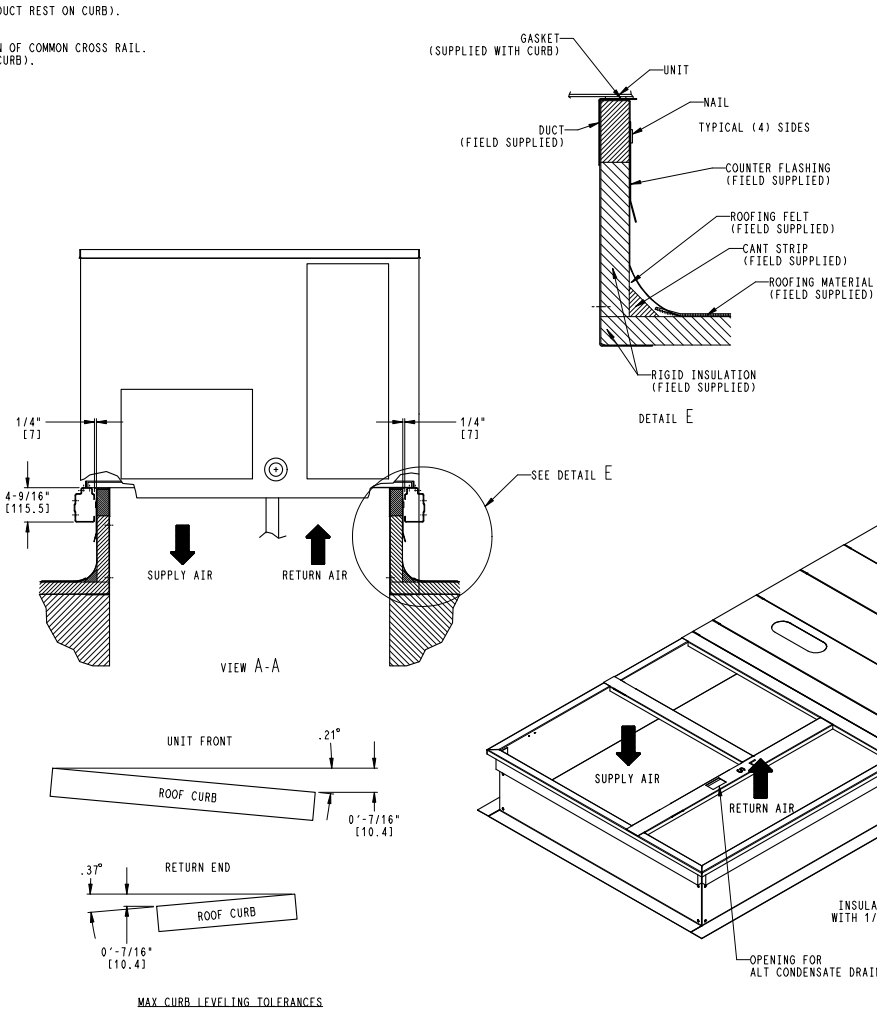
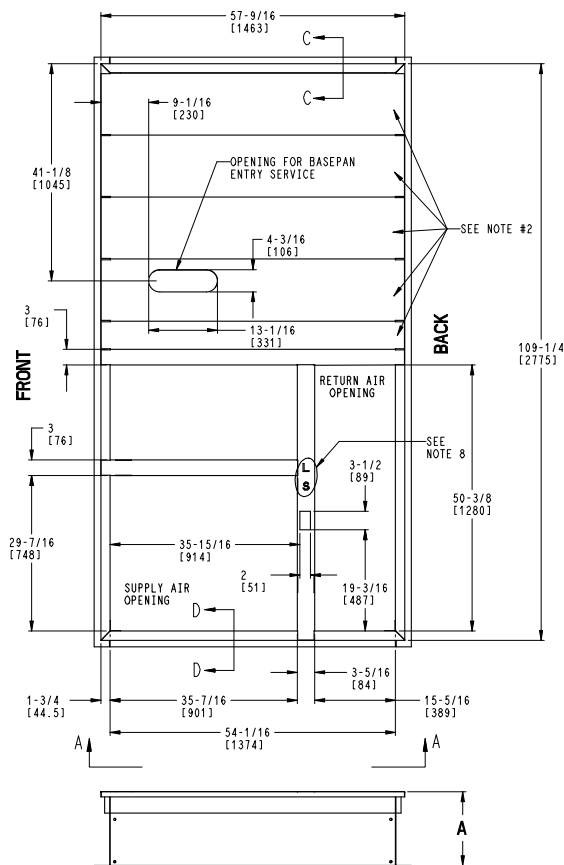
- NOTES:
1. ROOFCURB ACCESSORY IS SHIPPED DISASSEMBLED.
 2. INSULATED PANELS: 1/2" THK. NEOPRENE FOAM, 1.0# DENSITY.
 3. DIMENSIONS IN [] ARE IN MILLIMETERS.
 4. ROOFCURB SIDEWALLS: 16 GAGE STEEL.
 5. ATTACH DUCTWORK TO CURB. (FLANGES OF DUCT REST ON CURB).
 6. SERVICE CLEARANCE 4 FT ON EACH SIDE.
 7.  DIRECTION OF AIR FLOW.
 8. "L" & "S" DESIGNATIONS DENOTE LOCATION OF COMMON CROSS RAIL.
(POSITION "L" FOR LARGE DUCT OPENING CURB).



P.O. BOX 480
SYRACUSE, NY
13221

THIS DOCUMENT IS THE PROPERTY OF CARRIER CORPORATION
AND IS DELIVERED UPON THE EXPRESS CONDITION THAT THE
CONTENTS WILL NOT BE DISCLOSED OR USED WITHOUT CARRIER
CORPORATION'S WRITTEN CONSENT.

SUBMISSION OF THESE DRAWINGS OR DOCUMENTS
DOES NOT CONSTITUTE PART PERFORMANCE OR
ACCEPTANCE OF CONTRACT.



LARGE DUCT OPENINGS

DATE	SUPERCEDES	48/50HCD14 / 48/50TCD16 / 48/50LC08,09,12	50TM500780	REV
02/15/13	-	ROOF CURB		A

Unit Report For RTU-5T

Project: DELTA - Bluffton Pickleball Club
 Prepared By:

05/26/2022
 04:16PM

Unit Parameters

Unit Model:.....48GCSM06J2M6-6W4C0
 Unit Size:.....06 (5 Tons)
 Volts-Phase-Hertz:.....460-3-60
 Heating Type:.....Gas
 Duct Cfg:.....Vertical Supply / Vertical Return
 Stainless Steel, Low Heat
 Two Stage Cooling Models

Dimensions (ft. in.) & Weight (lb.) ***

Unit Length:.....6' 2.375"
 Unit Width:.....3' 10.625"
 Unit Height:.....3' 5.375"
 *** Total Operating Weight:.....666 lb

*** Weights and Dimensions are approximate. Weight does not include unit packaging. Approximate dimensions are provided primarily for shipping purposes. For exact dimensions and weights, refer to appropriate product data catalog.

Lines and Filters

Gas Line Size:.....1/2
 Condensate Drain Line Size:.....3/4
 Return Air Filter Type:.....Throwaway
 Return Air Filter Quantity:.....4
 Return Air Filter Size:.....16 x 16 x 2

Selection includes construction throwaway filter into the base fan curve. This filter is not MERV Rated.

Unit Configuration

Condensate Overflow Switch
 Direct Drive - EcoBlue - Medium Static
 Al/Cu - Al/Cu - Louvered Hail Guards
 Electromechanical Controls w/W7220 Econo Controller
 Enthalpy Ultra Low Leak Econo w/Baro Relief
 Hinged Panels, Unpowered Convenience Outlet
 Non-Fused Disconnect
 Standard Packaging

Warranty Information

1-Year parts(std.)
 5-Year compressor parts(std.)
 15-Year heat exchanger - Stainless Steel(std.)

No optional warranties were selected.

NOTE: Please see Warranty Catalog 500-089 for explanation of policies and ordering methods.

Ordering Information

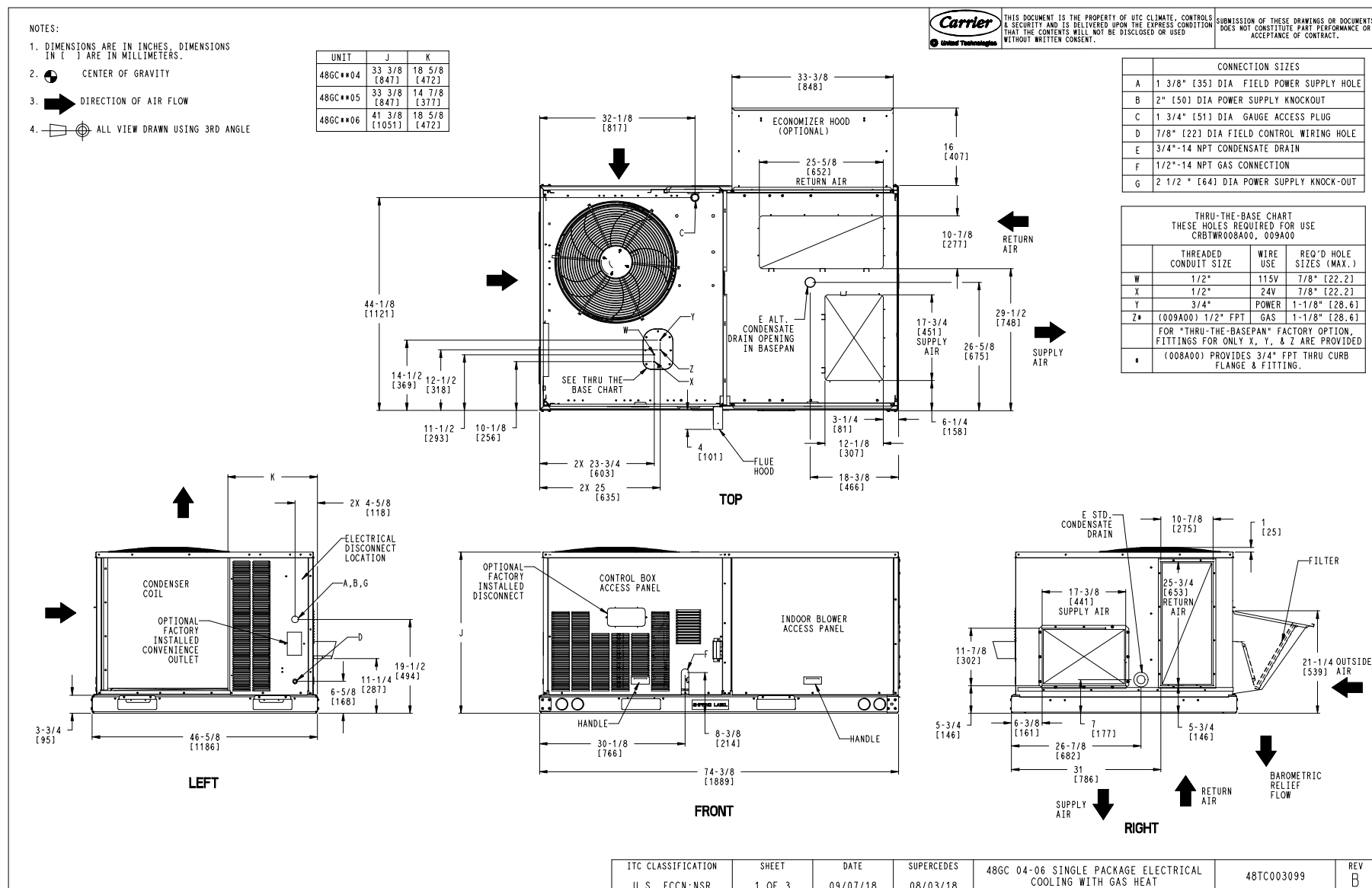
Part Number	Description	Quantity
48GCSM06J2M6-6W4C0	Rooftop Unit	2

ATTACHMENT 7

Certified Drawing for RTU-5T

Project: DELTA - Bluffton Pickleball Club
Prepared By:

05/26/2022
04:16PM



ATTACHMENT 7

Certified Drawing for RTU-5T

Project: DELTA - Bluffton Pickleball Club
Prepared By:

05/26/2022
04:16PM

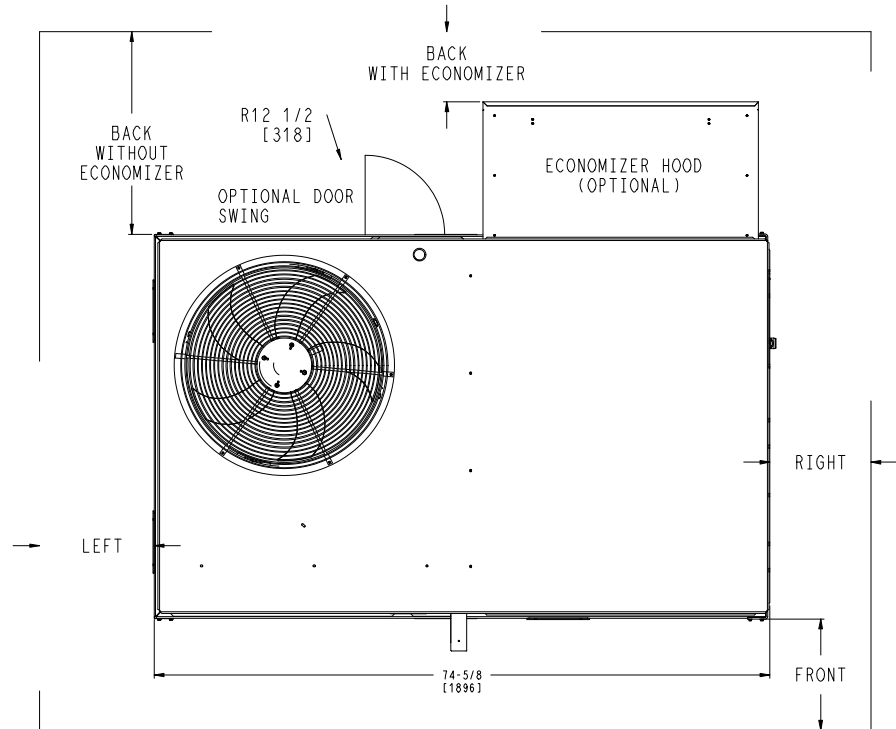
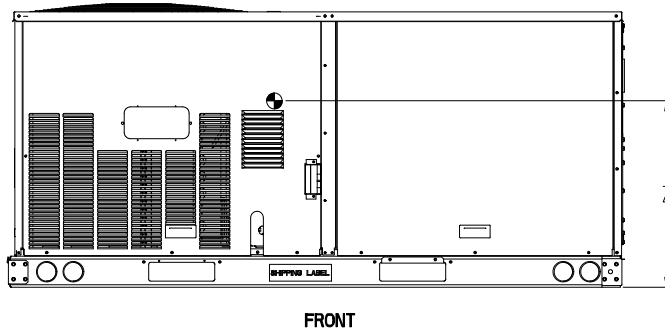
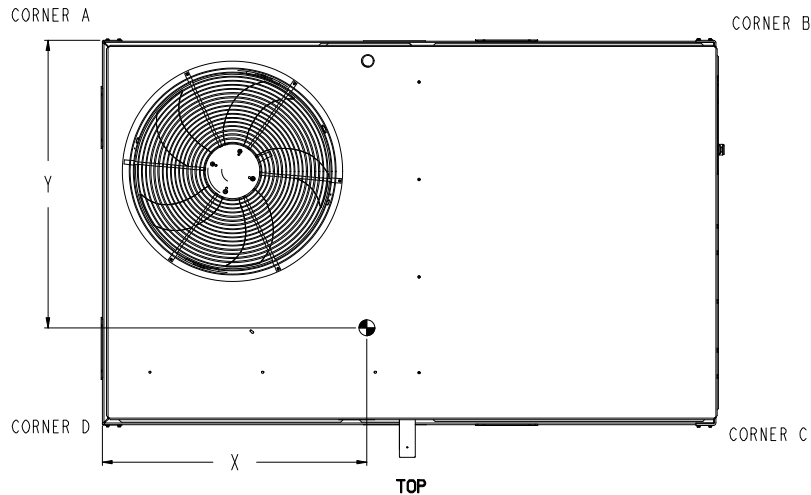
UNIT	STD. UNIT WEIGHT #		CORNER WEIGHT (A)		CORNER WEIGHT (B)		CORNER WEIGHT (C)		CORNER WEIGHT (D)		C.G.		HEIGHT
	LBS.	KG.	LBS.	KG.	LBS.	KG.	LBS.	KG.	LBS.	KG.	X	Y	Z
48GC**04	513	233	131	59	127	58	125	57	130	59	36 1/2 [927]	23 1/4 [591]	18 1/4 [464]
48GC**05	555	252	142	64	137	62	135	61	141	64	36 1/2 [927]	23 1/4 [591]	18 [457]
48GC**06	600	272	161	73	151	68	140	64	149	68	36 [914]	22 1/2 [572]	19 3/8 [492]

* - STANDARD UNIT WEIGHT IS WITH LOW GAS HEAT AND WITHOUT PACKAGING.
FOR OTHER OPTINS AND ACCESSORIES REFER TO THE PRODUCT DATA CATALOG.



THIS DOCUMENT IS THE PROPERTY OF UTC CLIMATE, CONTROLS & SECURITY AND IS DELIVERED UPON THE EXPRESS CONDITION THAT THE CONTENTS WILL NOT BE DISCLOSED OR USED WITHOUT WRITTEN CONSENT.

SUBMISSION OF THESE DRAWINGS OR DOCUMENTS DOES NOT CONSTITUTE PART PERFORMANCE OR ACCEPTANCE OF CONTRACT.



NOTES:

1. FOR ALL MINIMUM CLEARANCES LOCAL CODES OR JURISDICTIONS MAY PREVAIL.

SURFACE	SERVICE WITH:		OPERATING CLEARANCE
	CONDUCTIVE BARRIER	NONCONDUCTIVE BARRIER	
FRONT	48 [1219mm]	36 [914mm]	18 [457mm]
LEFT	48 [1219mm]	42 [1067mm]	18 [457mm]
BACK	48 [1219mm]	42 [1067mm]	18 [457mm]
BACK W/HOOD	36 [914mm]	36 [914mm]	18 [457mm]
RIGHT	36 [914mm]	36 [914mm]	18 [457mm]
TOP	72 [1829mm]	72 [1829mm]	72 [1829mm]

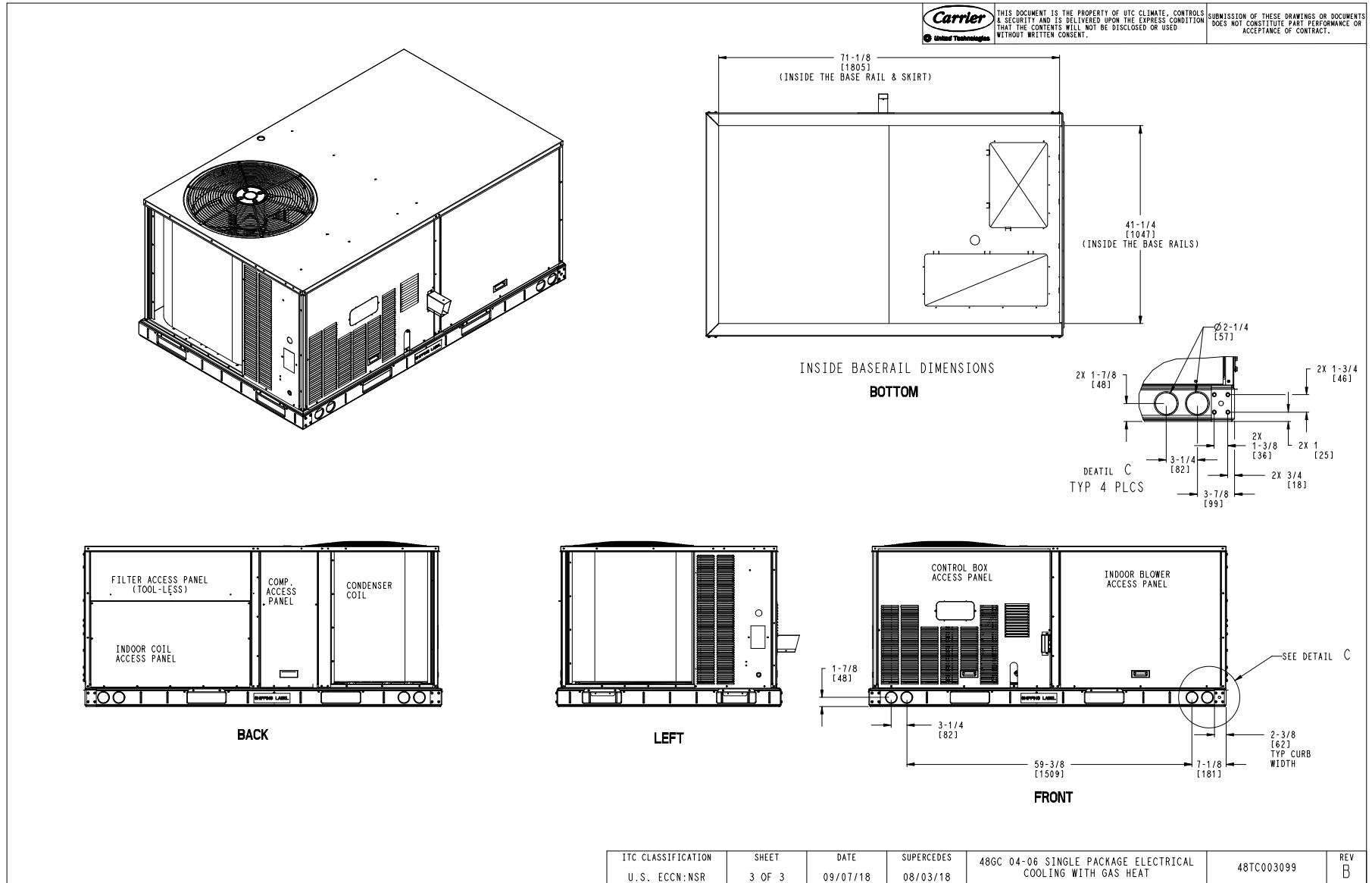
ITC CLASSIFICATION U.S. ECCN: NSR	SHEET 2 OF 3	DATE 09/07/18	SUPERCEDES 08/03/18	48GC 04-06 SINGLE PACKAGE ELECTRICAL COOLING WITH GAS HEAT	48TC003099	REV B
--------------------------------------	-----------------	------------------	------------------------	--	------------	----------

ATTACHMENT 7

Certified Drawing for RTU-5T

Project: DELTA - Bluffton Pickleball Club
Prepared By:

05/26/2022
04:16PM



ATTACHMENT 7

Unit Report For RTU-4T

Project: DELTA - Bluffton Pickleball Club
Prepared By:

05/26/2022
04:16PM

Unit Parameters

Unit Model:.....**48GCSM05J2M6-6W4C0**
Unit Size:.....**05 (4 Tons)**
Volts-Phase-Hertz:.....**460-3-60**
Heating Type:.....**Gas**
Duct Cfg:.....**Vertical Supply / Vertical Return**
Stainless Steel, Low Heat
Two Stage Cooling Models

Dimensions (ft. in.) & Weight (lb.) ***

Unit Length:.....**6' 2.375"**
Unit Width:.....**3' 10.625"**
Unit Height:.....**2' 9.375"**
*** Total Operating Weight:.....**733** lb

*** Weights and Dimensions are approximate. Weight does not include unit packaging. Approximate dimensions are provided primarily for shipping purposes. For exact dimensions and weights, refer to appropriate product data catalog.

Lines and Filters

Gas Line Size:.....**1/2**
Condensate Drain Line Size:.....**3/4**
Return Air Filter Type:.....**Throwaway**
Return Air Filter Quantity:.....**2**
Return Air Filter Size:.....**16 x 25 x 2**

Selection includes construction throwaway filter into the base fan curve. This filter is not MERV Rated.

Unit Configuration

Condensate Overflow Switch
Direct Drive - EcoBlue - Medium Static
Al/Cu - Al/Cu - Louvered Hail Guards
Electromechanical Controls w/W7220 Econo Controller
Enthalpy Ultra Low Leak Econo w/Baro Relief
Hinged Panels, Unpowered Convenience Outlet
Non-Fused Disconnect
Standard Packaging

Warranty Information

1-Year parts(std.)
5-Year compressor parts(std.)
15-Year heat exchanger - Stainless Steel(std.)
Complete Unit Year 2-5 Parts Only

NOTE: Please see Warranty Catalog 500-089 for explanation of policies and ordering methods.

Ordering Information

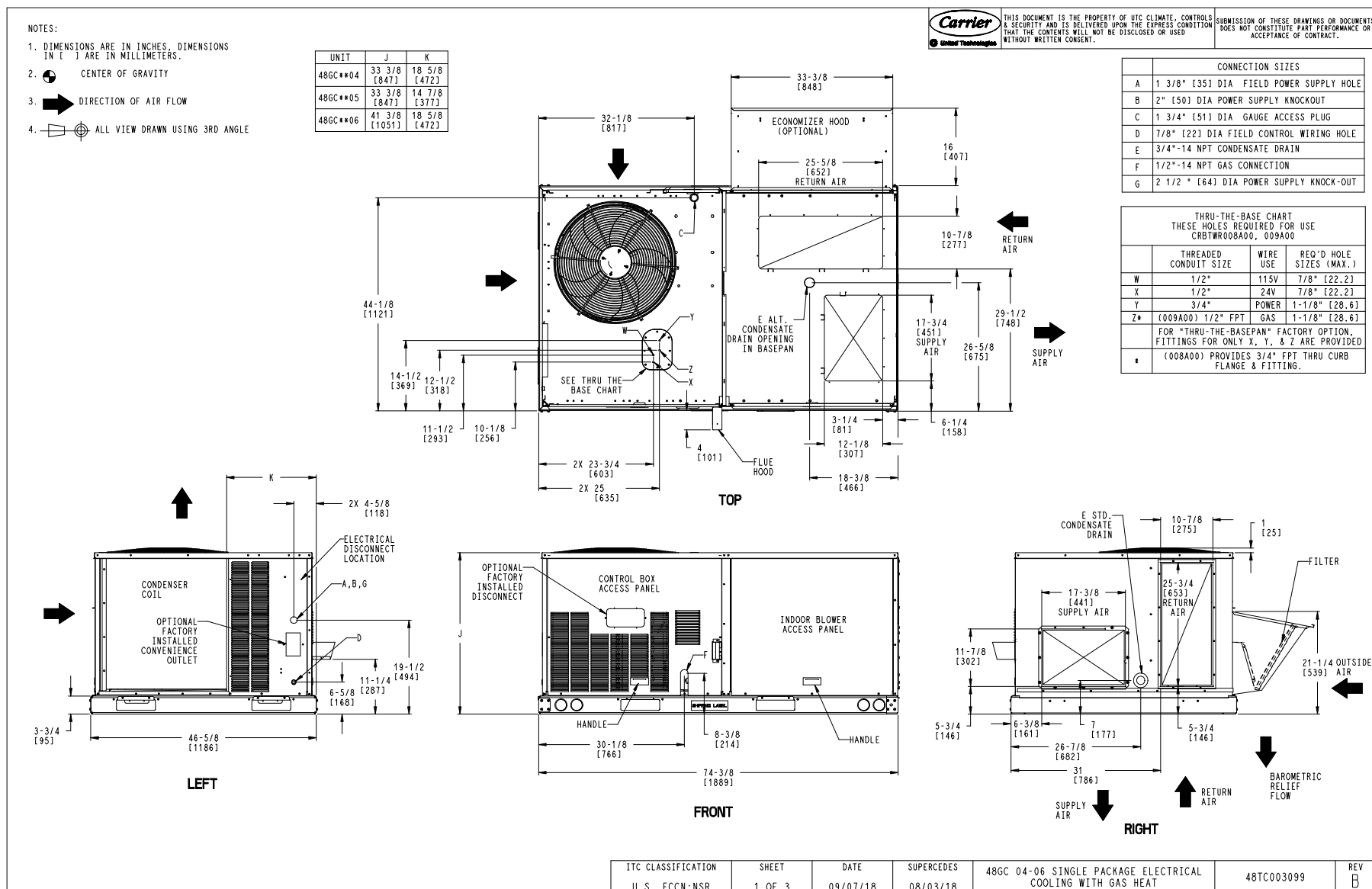
Part Number	Description	Quantity
48GCSM05J2M6-6W4C0	Rooftop Unit	1
Field Installed Accessories		
33CONNECTSTAT43	Carrier Connect™ Wi-Fi® 7-day programmable/non-prog	1
CRRFCURB001A01	14-inch Tall Roof Curb	1
CRWINSTR001A00	Winter Start Package	1
16X25X2-M13-R-P2	16x25x2 MERV-13 replacement air filters	1

ATTACHMENT 7

Certified Drawing for RTU-4T

Project: DELTA - Bluffton Pickleball Club
Prepared By:

05/26/2022
04:16PM



ATTACHMENT 7

Certified Drawing for RTU-4T

Project: DELTA - Bluffton Pickleball Club
Prepared By:

05/26/2022
04:16PM

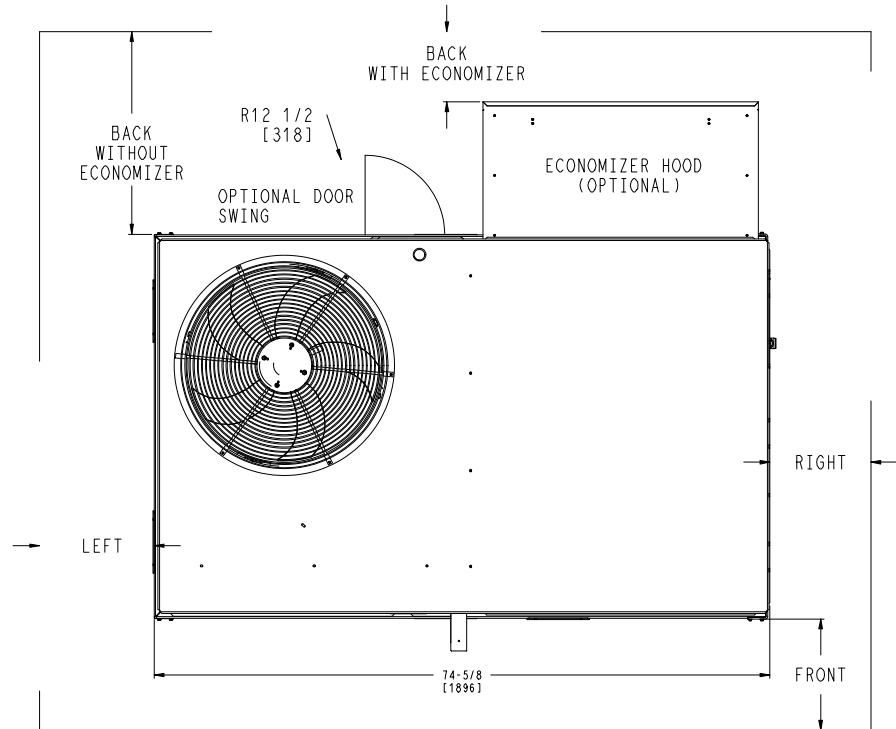
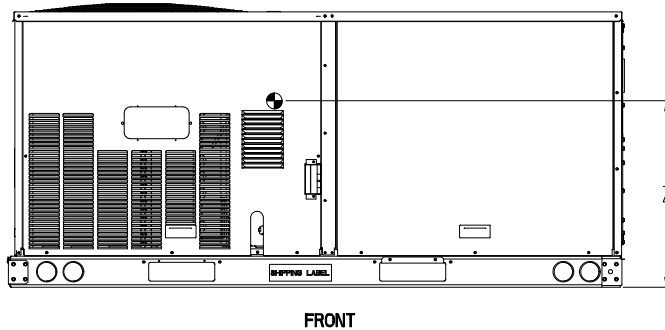
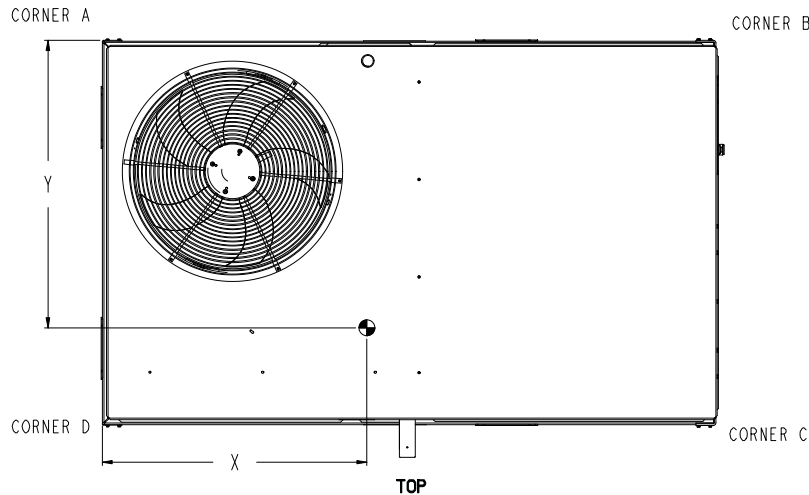
UNIT	STD. UNIT WEIGHT #		CORNER WEIGHT (A)		CORNER WEIGHT (B)		CORNER WEIGHT (C)		CORNER WEIGHT (D)		C.G.		HEIGHT
	LBS.	KG.	LBS.	KG.	LBS.	KG.	LBS.	KG.	LBS.	KG.	X	Y	Z
48GC**04	513	233	131	59	127	58	125	57	130	59	36 1/2 [927]	23 1/4 [591]	18 1/4 [464]
48GC**05	555	252	142	64	137	62	135	61	141	64	36 1/2 [927]	23 1/4 [591]	18 [457]
48GC**06	600	272	161	73	151	68	140	64	149	68	36 [914]	22 1/2 [572]	19 3/8 [492]

* - STANDARD UNIT WEIGHT IS WITH LOW GAS HEAT AND WITHOUT PACKAGING.
FOR OTHER OPTINS AND ACCESSORIES REFER TO THE PRODUCT DATA CATALOG.



THIS DOCUMENT IS THE PROPERTY OF UTC CLIMATE, CONTROLS & SECURITY AND IS DELIVERED UPON THE EXPRESS CONDITION THAT THE CONTENTS WILL NOT BE DISCLOSED OR USED WITHOUT WRITTEN CONSENT.

SUBMISSION OF THESE DRAWINGS OR DOCUMENTS DOES NOT CONSTITUTE PART PERFORMANCE OR ACCEPTANCE OF CONTRACT.



NOTES:

1. FOR ALL MINIMUM CLEARANCES LOCAL CODES OR JURISDICTIONS MAY PREVAIL.

SURFACE	SERVICE WITH:		OPERATING CLEARANCE
	CONDUCTIVE BARRIER	NONCONDUCTIVE BARRIER	
FRONT	48 [1219mm]	36 [914mm]	18 [457mm]
LEFT	48 [1219mm]	42 [1067mm]	18 [457mm]
BACK	48 [1219mm]	42 [1067mm]	18 [457mm]
BACK W/HOOD	36 [914mm]	36 [914mm]	18 [457mm]
RIGHT	36 [914mm]	36 [914mm]	18 [457mm]
TOP	72 [1829mm]	72 [1829mm]	72 [1829mm]

ITC CLASSIFICATION U.S. ECCN:NSR	SHEET 2 OF 3	DATE 09/07/18	SUPERCEDES 08/03/18	48GC 04-06 SINGLE PACKAGE ELECTRICAL COOLING WITH GAS HEAT	48TC003099	REV B
-------------------------------------	-----------------	------------------	------------------------	--	------------	----------

ATTACHMENT 7

Certified Drawing for RTU-4T

Project: DELTA - Bluffton Pickleball Club
Prepared By:

05/26/2022
04:16PM

