



bluffton
HEART OF THE LOWCOUNTRY™



CITY OF
BEAUFORT



Friends of the
SPANISH MOSS TRAIL



Coastal
Conservation
League



BEAUFORT COUNTY CONNECTS

Bicycle and Pedestrian Plan 2021



Why Plan?

- Improve public health – both physical and mental
- Decrease traffic and emissions
- Increase equitable access to facilities and services
- Increase sense of community and place
- Reduce collisions involving pedestrians and cyclists
- Drive economic success – property values, businesses, tourism, jobs



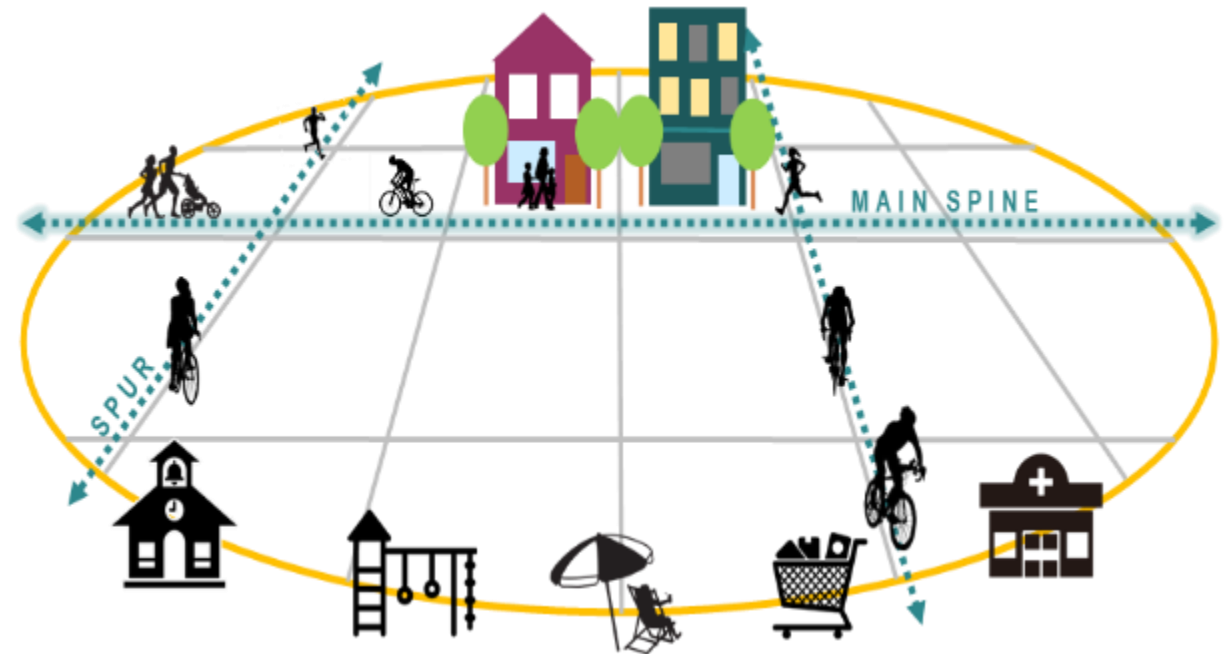
Objectives

- Expand the integrated network of sidewalks, multi-use paths, and on-street bicycle **connections** linking people to jobs, schools, parks, destinations, and adjacent communities;
- Establish walking and biking as **routine**, efficient, **safe**, and equitable options for both transportation and recreation; and
- Enhance quality of life, public health, economic opportunity, and **equity** for people of all economic statuses, races, genders, ages, and abilities.



Guiding Principles

- **Make Connections:** Connect residents and visitors to jobs, schools, parks, shopping, nature, and other destinations in the region.
- **Target the “Interested but Concerned”:** Multi-use paths, signage, and educational opportunities through the schools, pamphlets, or other publications are critical pieces of the puzzle.
- **Spine and Spur Approach**

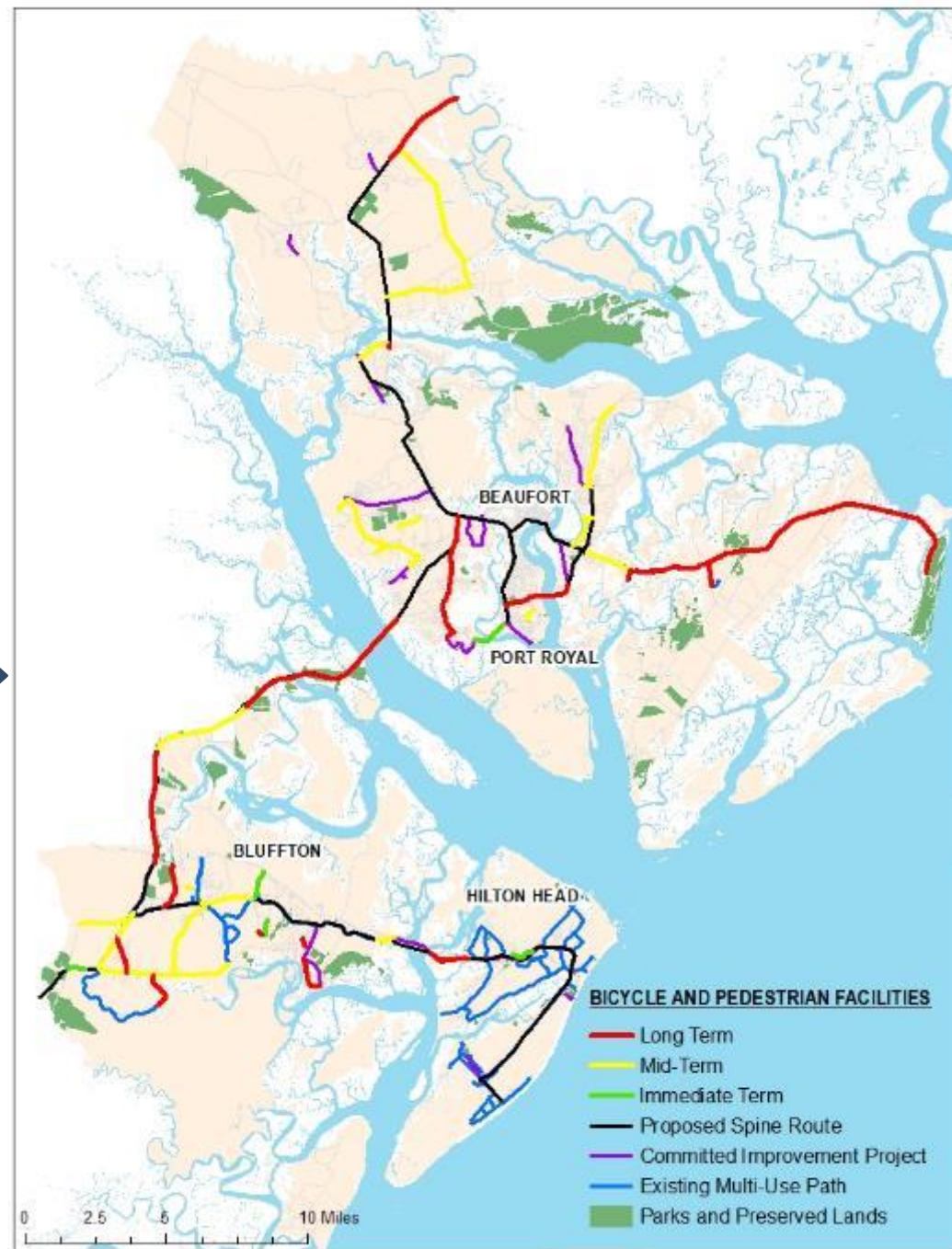




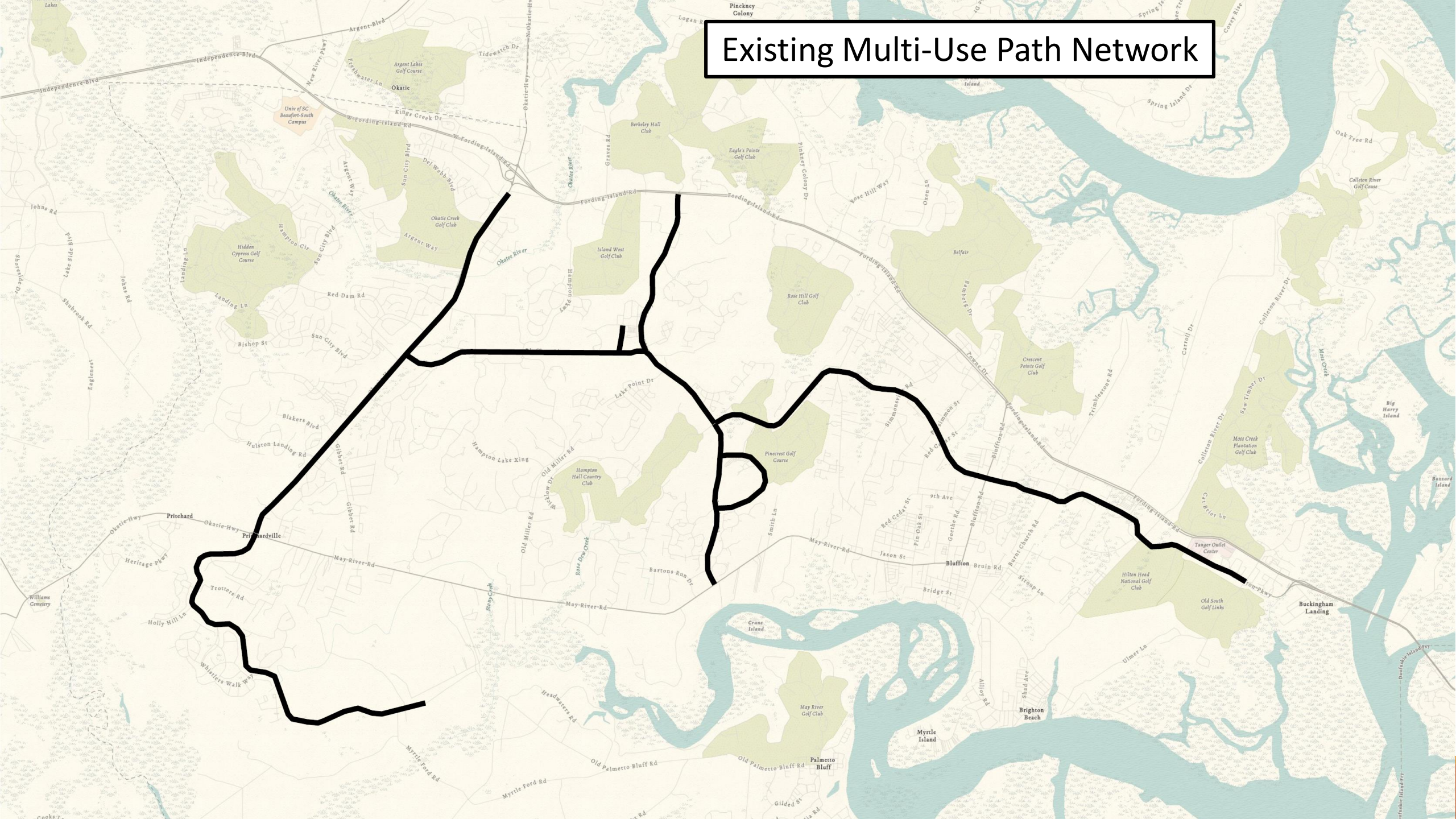
Existing and
Committed
Projects



Fully
Implemented
Bike/Ped Plan



Existing Multi-Use Path Network



Immediate Projects (0-5 years)

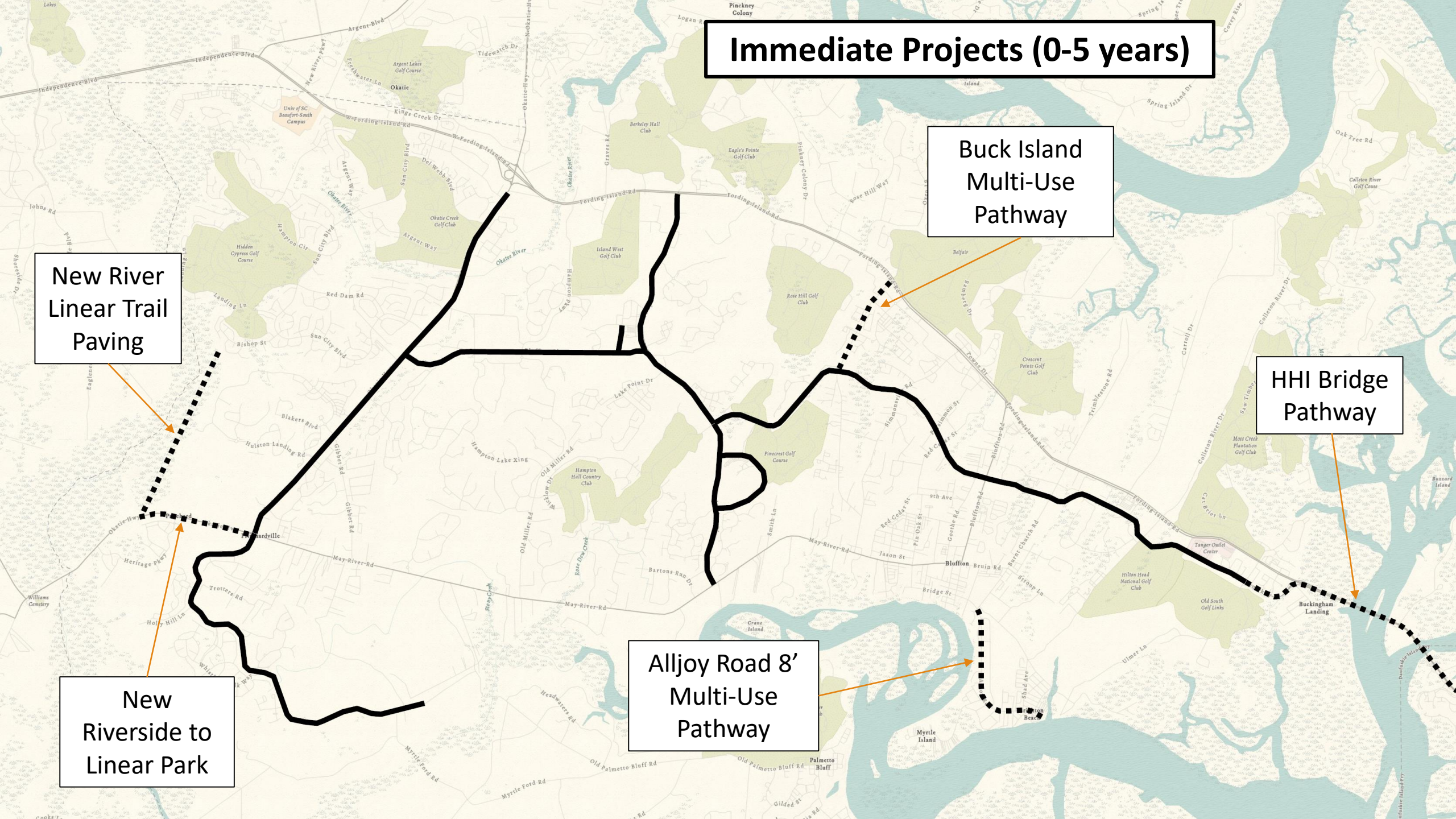
New River
Linear Trail
Paving

Buck Island
Multi-Use
Pathway

HHI Bridge
Pathway

New
Riverside to
Linear Park

Alljoy Road 8'
Multi-Use
Pathway



Mid Range Projects (6-10 years)

SC 170 Pathway
to Oldfield

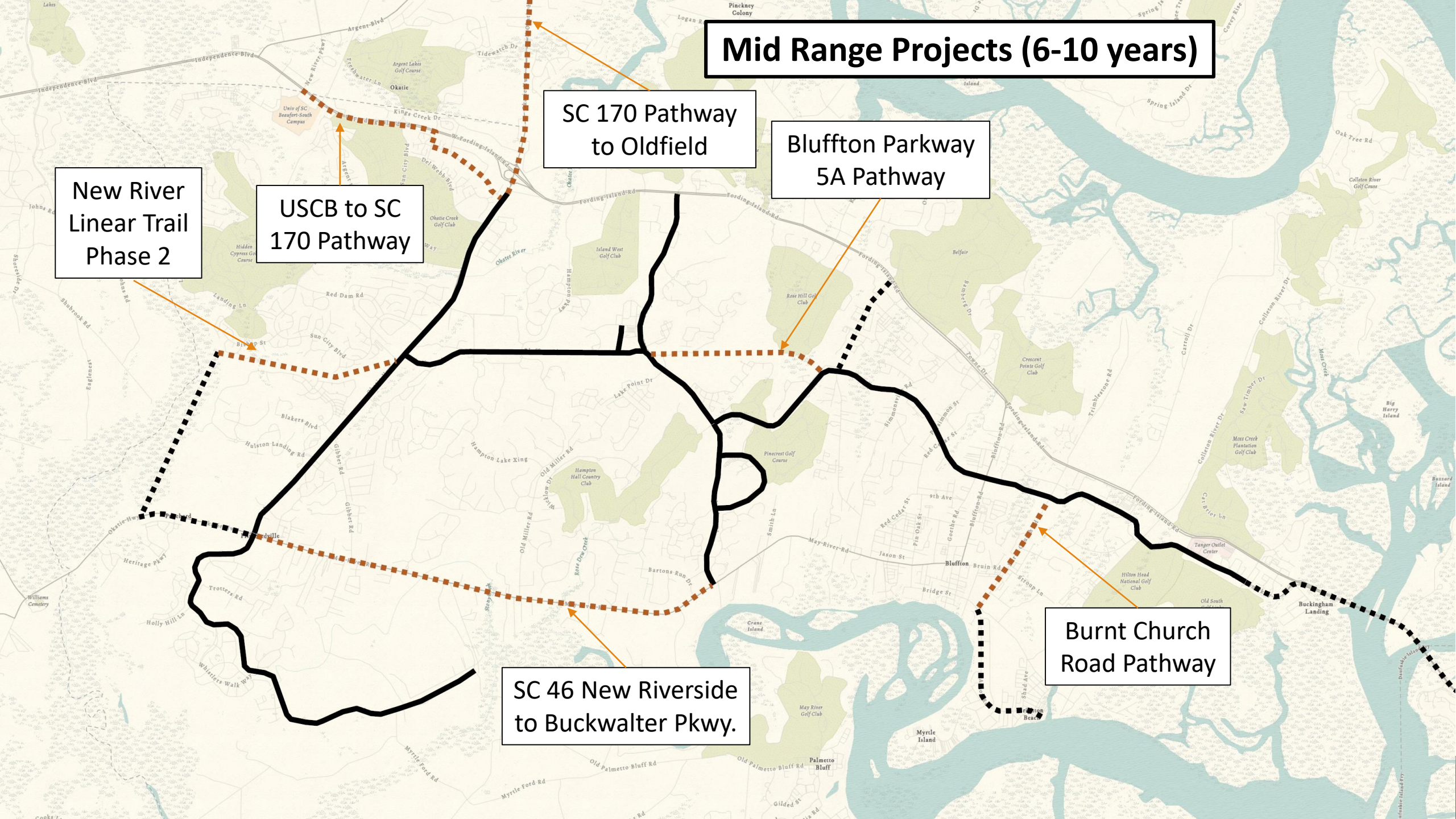
Bluffton Parkway
5A Pathway

New River
Linear Trail
Phase 2

USCB to SC
170 Pathway

SC 46 New Riverside
to Buckwalter Pkwy.

Burnt Church
Road Pathway



Long Range Projects (10 years +)

Buckwalter to Island
West Pathway
Connector

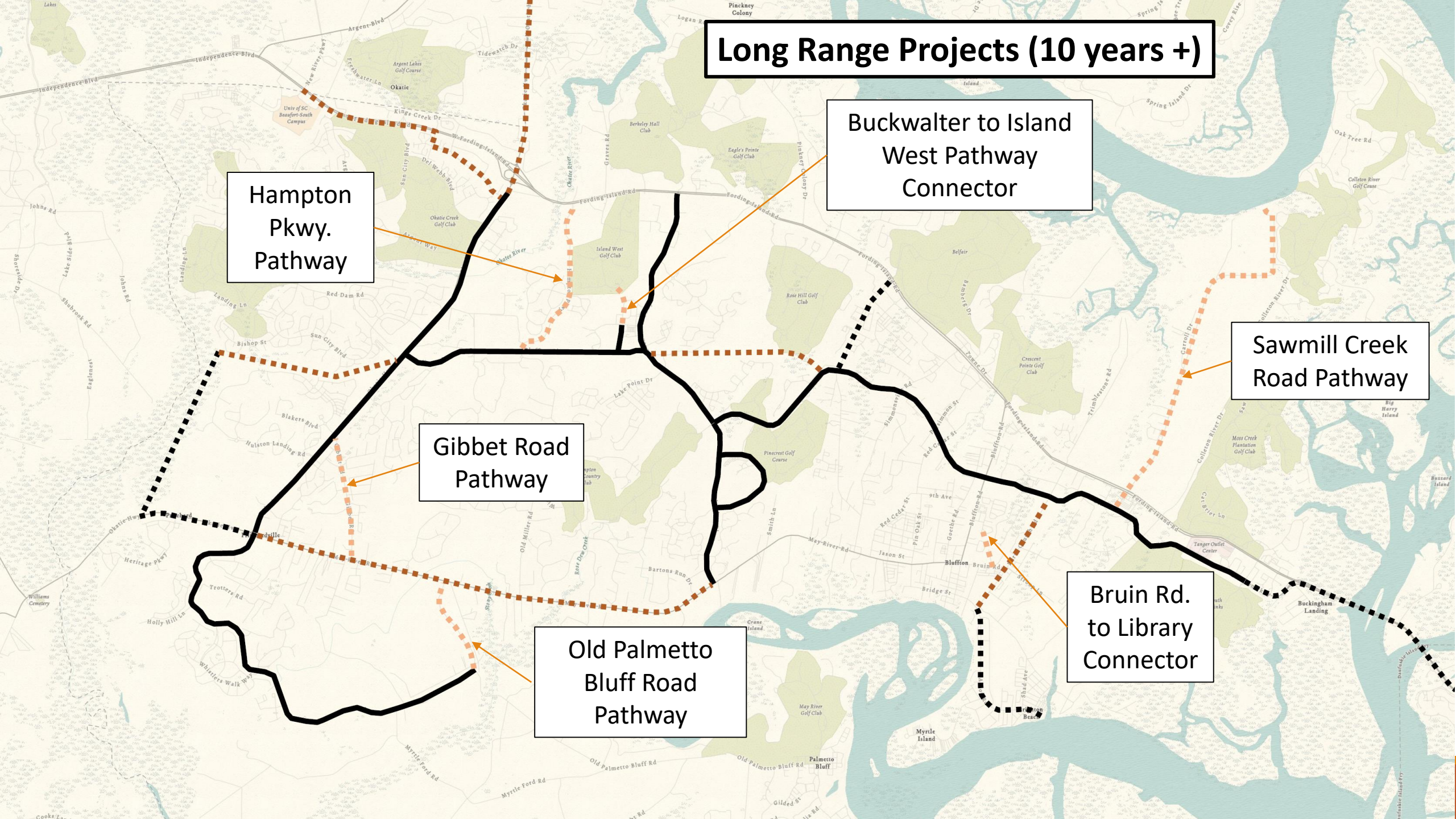
Hampton
Pkwy.
Pathway

Sawmill Creek
Road Pathway

Gibbet Road
Pathway

Bruin Rd.
to Library
Connector

Old Palmetto
Bluff Road
Pathway



Funding Sources

Roughly estimated \$50 million for 106 miles of pathways in Beaufort County and municipalities

- Local Accommodations Tax
- Capital Project Sales Tax (Referendum)
- LATS
- LCOG Federal Transportation Dollars
- SCPRT Recreational Trails Program
- SCDOT Transportation Alternative Program
- RAISE Discretionary Grants
- Community Development Block Grant
- AARP Livable Communities Grant
- Safe Routes to School
- Private Funding

Plan Implementation

- Adoption by resolution by each local jurisdiction.
- Incorporate recommendations into each LATS Long Range Transportation Study.
- Develop a funding strategy and anticipated annual revenue stream.
- Create a staff position whose primary responsibility is to oversee plan implementation.
- Develop a non-profit organization to advocate for pathway projects in Beaufort County and work to raise private donations.
- Each local jurisdiction adopt a Complete Streets policy.
- Promote Safe Routes to School with the district.
- Provide outreach and advocacy for walking and cycling in the region.

Questions