

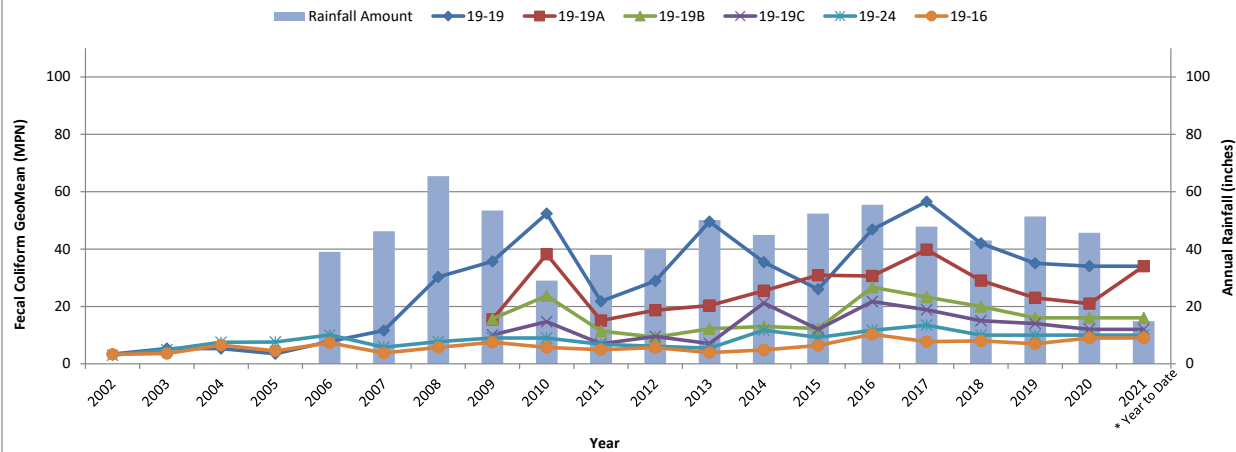
	19-19				19-19A				19-19B				19-19C				19-24				19-16			
	2018	2019	2020	2021	2018	2019	2020	2021	2018	2019	2020	2021	2018	2019	2020	2021	2018	2019	2020	2021	2018	2019	2020	2021
	Fecal Coliform (MPN)	Fecal Coliform (MPN)	Fecal Coliform (MPN)	Fecal Coliform (MPN)	Fecal Coliform (MPN)	Fecal Coliform (MPN)	Fecal Coliform (MPN)	Fecal Coliform (MPN)	Fecal Coliform (MPN)	Fecal Coliform (MPN)	Fecal Coliform (MPN)	Fecal Coliform (MPN)	Fecal Coliform (MPN)	Fecal Coliform (MPN)	Fecal Coliform (MPN)	Fecal Coliform (MPN)	Fecal Coliform (MPN)	Fecal Coliform (MPN)	Fecal Coliform (MPN)	Fecal Coliform (MPN)	Fecal Coliform (MPN)	Fecal Coliform (MPN)	Fecal Coliform (MPN)	Fecal Coliform (MPN)
December	79.0	170.0	17.0		49.0	33.0	22.0		33.0	140.0	17.0		46.0	33.0	4.5		23.0	13.0	4.0		21.0	110.0	11.0	
November	49.0	17.0	70.0		13.0	6.8	31.0		23.0	7.8	17.0		17.0	11.0	13.0		17.0	4.5	13.0		7.8	2.0	4.5	
October	79.0	7.8	49.0		23.0	4.5	79.0		7.8	2.0	31.0		7.8	4.5	21.0		7.8	1.8	33.0		2.0	2.0	79.0	
September	49.0	79.0	110.0		23.0	33.0	49.0		13.0	6.8	49.0		17.0	17.0	33.0		17.0	4.5	33.0		17.0	1.8	33.0	
August	70.0	70.0	49.0		23.0	49.0	49.0		13.0	33.0	23.0		4.5	22.0	23.0		7.8	7.8	17.0		17.0	17.0	22.0	
July	23.0	4.5	33.0		33.0	13.0	13.0		11.0	7.8	23.0		7.8	17.0	7.8		13.0	22.0	7.8		4.5	13.0	17.0	
June	11.0	33.0	NS		23.0	49.0	NS		23.0	49.0	NS		7.8	46.0	NS		4.5	13.0	NS		1.8	4.5	NS	
May	17.0	7.8	70.0	2.0	33.0	9.2	49.0	49.0	17.0	7.8	23.0	23.0	13.0	2.0	22.0	23.0	23.0	6.8	6.8	23.0	13.0	4.5	4.5	7.8
April	33.0	23.0	33.0	33.0	13.0	13.0	33.0	23.0	17.0	7.8	13.0	22.0	17.0	6.8	6.8	17.0	49.0	23.0	13.0	7.8	17.0	6.8	13.0	2.0
March	22.0	23.0	170.0	33.0	21.0	23.0	49.0	11.0	4.5	6.8	130.0	17.0	11.0	13.0	49.0	13.0	7.8	7.8	70.0	2.0	9.3	4.5	33.0	2.0
February	17.0	64.0	17.0	79.0	7.8	33.0	7.8	70.0	17.0	23.0	21.0	79.0	17.0	31.0	4.5	23.0	2.0	6.8	4.5	7.8	7.8	13.0	6.8	6.8
January	13.0	23.0	95.0	17.0	2.0	23.0	33.0	17.0	4.5	13.0	33.0	13.0	2.0	33.0	17.0	23.0	1.8	7.8	17.0	17.0	4.5	23.0	17.0	13.0
Additional Samples																								
Additional Samples																								
Average Annual GeoMean	30.8	26.4	51.4	19.6	17.5	19.0	31.9	27.2	13.1	13.0	27.3	24.5	10.7	14.5	14.0	19.3	9.8	8.0	13.8	8.6	7.9	7.5	15.3	4.9
** Truncated GeoMetric Mean	42.0	35.0	34.0	32.0	29.0	23.0	21.0	24.0	20.0	16.0	16.0	19.0	15.0	14.0	12.0	15.0	10.0	10.0	10.0	10.0	8.0	7.0	9.0	9.0
** Truncated 90th Percentile	176.0	168.0	106.0	125.0	115.0	89.0	59.0	63.0	71.0	63.0	50.0	64.0	56.0	52.0	37.0	40.0	44.0	38.0	31.0	31.0	30.0	32.0	35.0	35.0

NS = No Sample

AS = Additional Samples

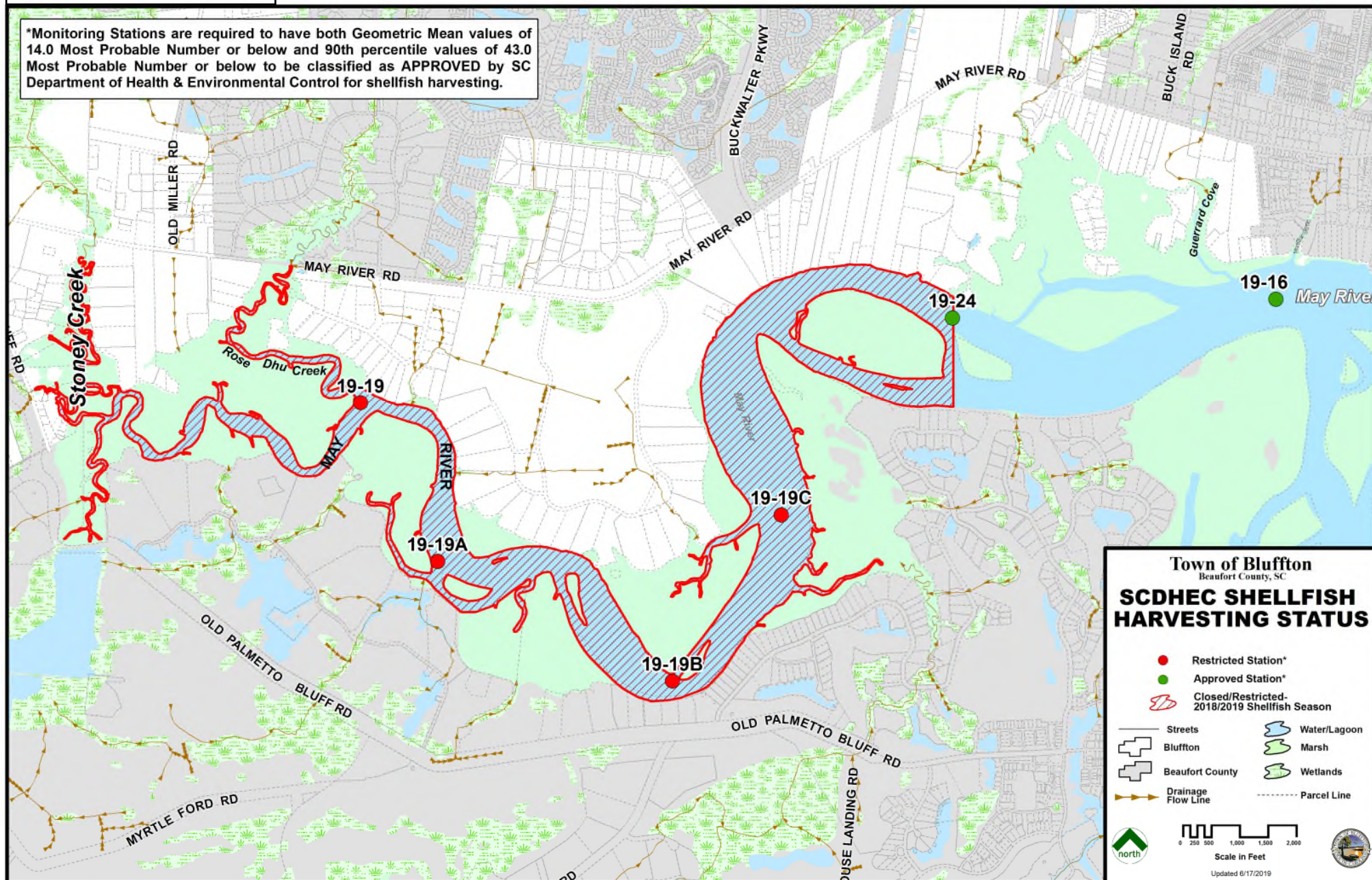
\*\* Town staff calculations utilizing DHEC statistics

SC DHEC May River Headwaters Shellfish Stations Average Annual Fecal Coliform



## May River Headwaters

\*Monitoring Stations are required to have both Geometric Mean values of 14.0 Most Probable Number or below and 90th percentile values of 43.0 Most Probable Number or below to be classified as APPROVED by SC Department of Health & Environmental Control for shellfish harvesting.





ACTIVITY - FINANCIAL	STATUS
Funding Opportunities	Council unanimously adopted \$115 SWU Fee and NPDES-related Fees on 6/9/20.
ACTIVITY - POLICIES	STATUS
Sewer Connection & Extension Policy	<i>Completed 2017.</i>
Septic to Sewer Conversion Program	<i>Completed 2018.</i>
Sewer Connection Ordinance and Ordinance Amendment	<i>Completed 2015 and 2018, respectively.</i>
Southern Lowcountry Regional Stormwater Ordinance and Design Manual	<b><i>Current project updates are included in Engineering Consent Agenda under "Southern Lowcountry Regional Board (SoLoCo)."</i></b>
ACTIVITY - PROJECTS	STATUS
Sanitary Sewer Extension	Completed Buck Island/Simmonsville Road (BIS) Phases I, II, III, IV; Toy Fields; Jason/Able; and Poseys Court. Six project phases of Historic District sewer extension are proposed in the 5-year Capital Improvement Program. <b><i>Current project updates are included in Engineering Consent Agenda under "Sewer &amp; Water."</i></b>
May River 319 Grant Phase 1 - New Riverside Pond (Grant award of \$483,500 in 2009)	<i>Completed 2013.</i>
May River 319 Grant Phase 2 - Pine Ridge (Grant award of \$290,000 in 2011)	<i>Completed 2016.</i>
May River 319 Grant Phase 3 - Town Hall Parking Retrofit (Grant award of \$231,350 in 2016)	<i>Completed 2019.</i>
May River 319 Grant Phase 4 - Sanitary Sewer Connections (Grant award of \$365,558.36 in 2019)	Grant to construct 49 sewer lateral connections in Poseys Court, Little Aaron and Historic District Phases 1 and 2. <b><i>Current project updates are included in Engineering Consent Agenda under "Sewer &amp; Water."</i></b>
May River 319 Grant Phase 5 - Bridge Street Streetscape (Grant award of \$179,900 in 2020)	Supports enhanced drainage and water quality improvements as part of the Bridge Street Streetscape project. <b><i>Current project updates are included in Engineering Consent Agenda under "Pathways."</i></b>
Stoney Creek Wetlands Restoration: Preliminary Design Phase	Project on hold following Council direction on 5/31/17.
May River Watershed Action Plan Update & Modeling Report	<i>Completed 2021. Town Council adopted the document as a supporting document to the Comprehensive Plan on 2/9/21.</i>
ACTIVITY - PROGRAMS	STATUS
Public Outreach/Participation/Involvement (MS4 Minimum Control Measures #1 & 2)	Outreach and involvement efforts continue through county-wide partnership with Carolina Clear as Lowcountry Stormwater Partners - Neighbors for Clean Water, through local cleanups, civic group presentations, and the May River Watershed Action Plan Advisory Committee. <b><i>Current updates are included in Engineering Consent Agenda and Attachment 3.</i></b>
Infrastructure Mapping/GIS (MS4 Minimum Control Measure #3)	Data points continue to be collected with new development to meet MS4 requirements & populate water quality model. <b><i>Current updates are included in Engineering Consent Agenda Attachment 4a.</i></b>

ACTIVITY - PROGRAMS continued	STATUS continued
Water Quality Monitoring Program (MS4 Minimum Control Measure #3)	1. SCDHEC Shellfish monitoring results and map 2. <i>E. coli</i> bacteria "hot spot" concentrations 3. Microbial Source Tracking of bacteria 4. Illicit Discharge investigation and monitoring 5. BMP efficacy monitoring 6. MS4 monitoring <b><i>Current updates are included in Engineering Consent Agenda Attachments 1, 1a, 4b - 4d.</i></b>
Illicit Discharge Detection & Elimination (IDDE) Program (MS4 Minimum Control Measure #3)	Response to reported and observed non-stormwater discharges to the stormwater drainage system. <b><i>Current updates are included in Engineering Consent Agenda Attachment 4e.</i></b>
Construction Site Stormwater Runoff Control Program (MS4 Minimum Control Measure #4)	Sediment and erosion control inspections with escalating enforcement response. <b><i>Current updates are included in Engineering Consent Agenda Attachment 5.</i></b>
Stormwater Plan Review & Related Activity Program (MS4 Minimum Control Measure #5)	SCDHEC delegated plan review-related activities. <b><i>Current updates are included in Engineering Consent Agenda Attachment 6.</i></b>
Ditch Inspection/Maintenance Program (MS4 Minimum Control Measure #6)	Continued coordination with SCDOT, Beaufort County and Town Public Works to inspect and maintain ditches within the Town's jurisdiction. <b><i>Current updates are included in Engineering Consent Agenda Attachment 7.</i></b>
Neighborhood Assistance Program - Septic System Maintenance Program	On-going assistance offered to Town residents regardless of financial status through Neighborhood Assistance Program (NAP). <b><i>Current updates are provided in Growth Management Consent Agenda.</i></b>





# **PUBLIC NOTICE**

## **THE MAY RIVER WATERSHED ACTION PLAN ADVISORY COMMITTEE (WAPAC)**

Meeting scheduled for

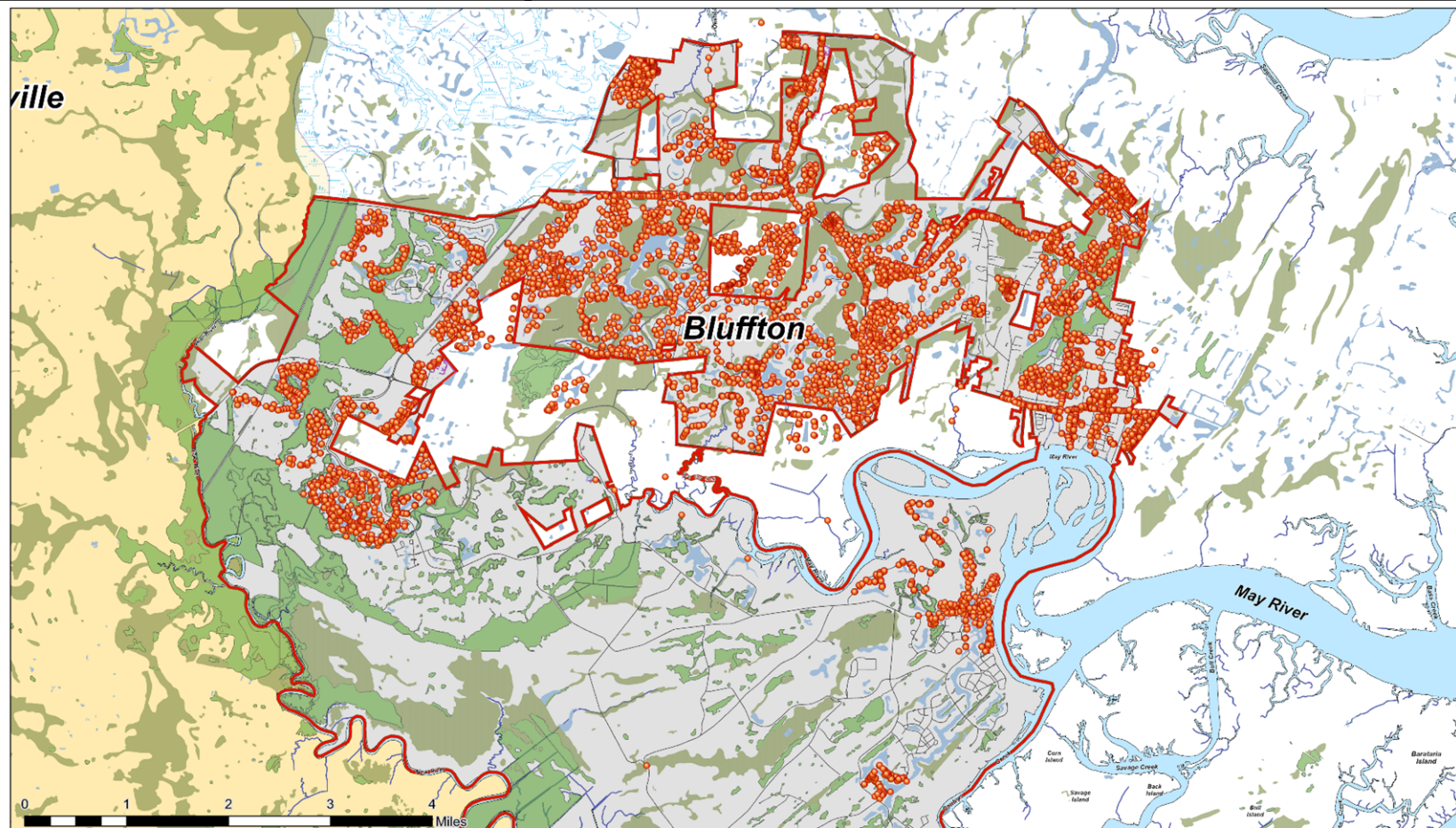
Thursday, June 24, 2021 at 9:00 A.M.

has been CANCELED  
due to lack of agenda items

The next meeting is scheduled for  
Thursday, July 22, 2021

If you have questions, please contact  
Watershed Management at: 843-706-4500

# MS4 Minimum Control Measure #3 – IDDE (Illicit Discharge Detection & Elimination): Stormwater Infrastructure Inventory



**Town of Bluffton**  
Beaufort County, SC

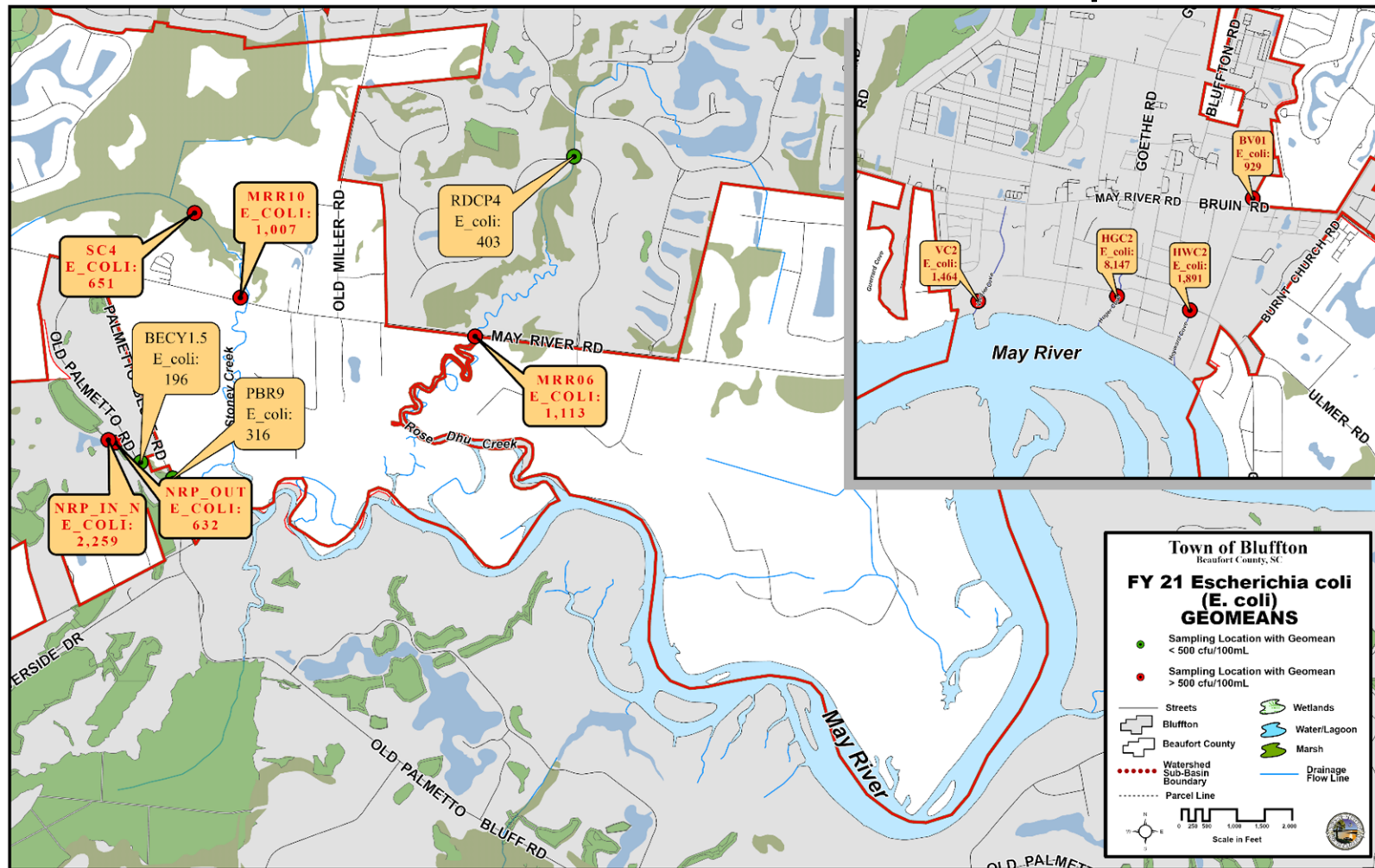
## STORMWATER INFRASTRUCTURE



### Stormwater Infrastructure Inventory Collection Status

FY 2021 YTD Collection Totals	2,222
FY 2020 Collection Totals	4,878
FY 2019 Collection Totals	2,925
FY 2018 Collection Totals	3,777

## MS4 Minimum Control Measure #3 – IDDE: *E. coli* Concentrations Trend Map



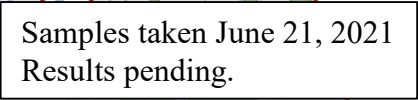
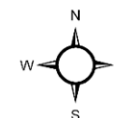
	USCB Water Quality Samples	Microbial Source Tracking Samples	MS4 Quarterly Samples Collected
FY 2021 YTD Totals	380	115	179
FY 2020 Totals	223	115	123
FY 2019 Totals	280	193	264
FY 2018 Totals	216	217	224

6/23/2021

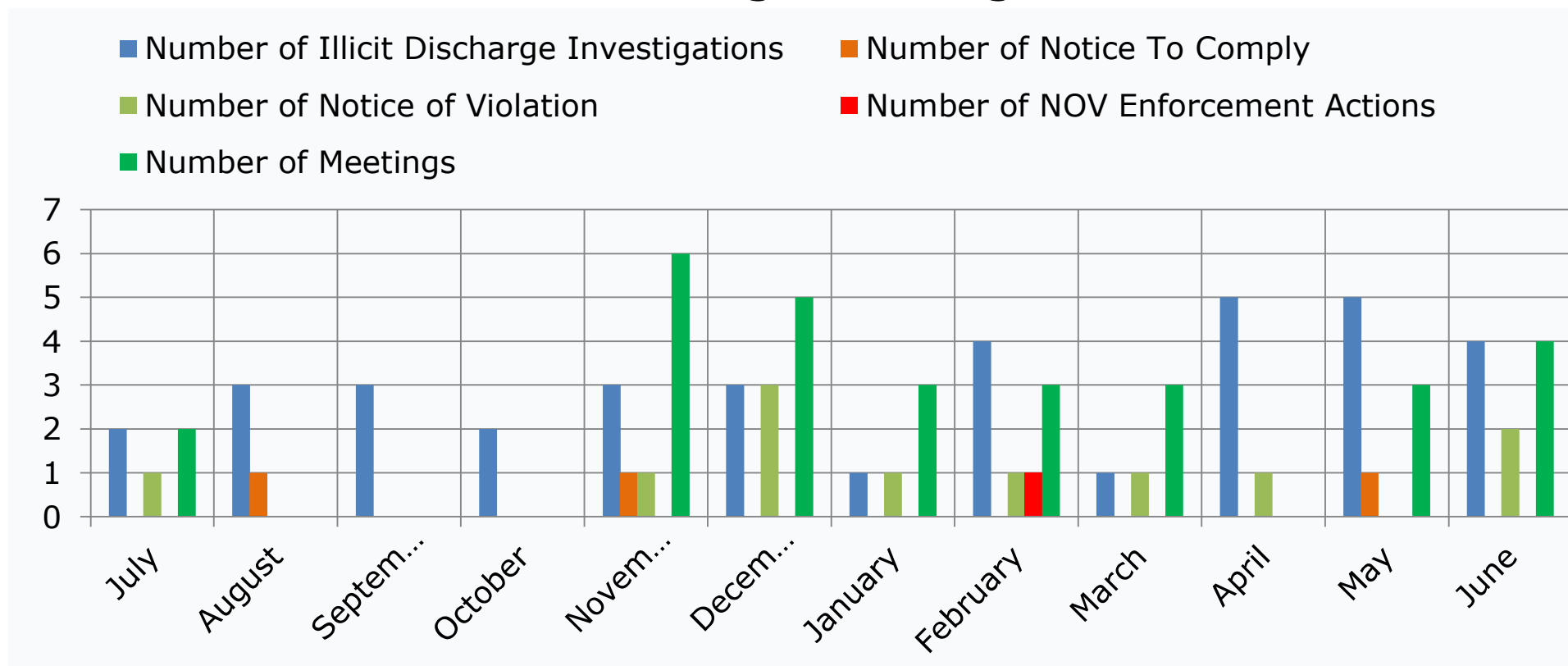
- MST program began November 2016; MS4 Quarterly Sampling initiated 2/2017
- Totals include only samples submitted for laboratory analysis, and not *in situ* parameters.





[illegible]

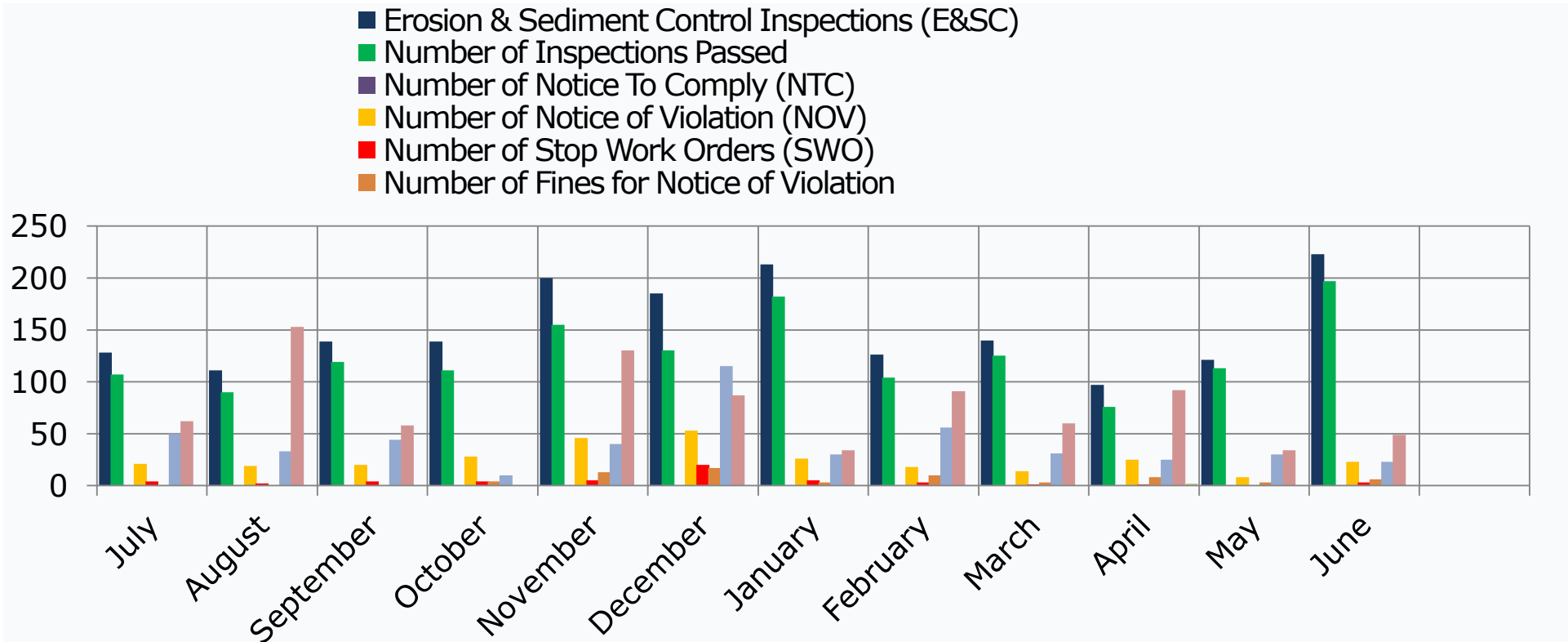
## MS4 Minimum Control Measure #3 – IDDE: Illicit Discharge Investigations



	Number of Illicit Discharge Investigations	Number of Notices To Comply Issued	Number of Notices of Violation Issued	Number of NOV Enforcement Actions	Number of Meetings
FY 2021 YTD Totals	36	3	11	1	29
FY 2020 Totals	45	10	8	6	49
FY 2019 Totals	38	20	3	1	61
FY 2018 Totals	48	20	4	2	60

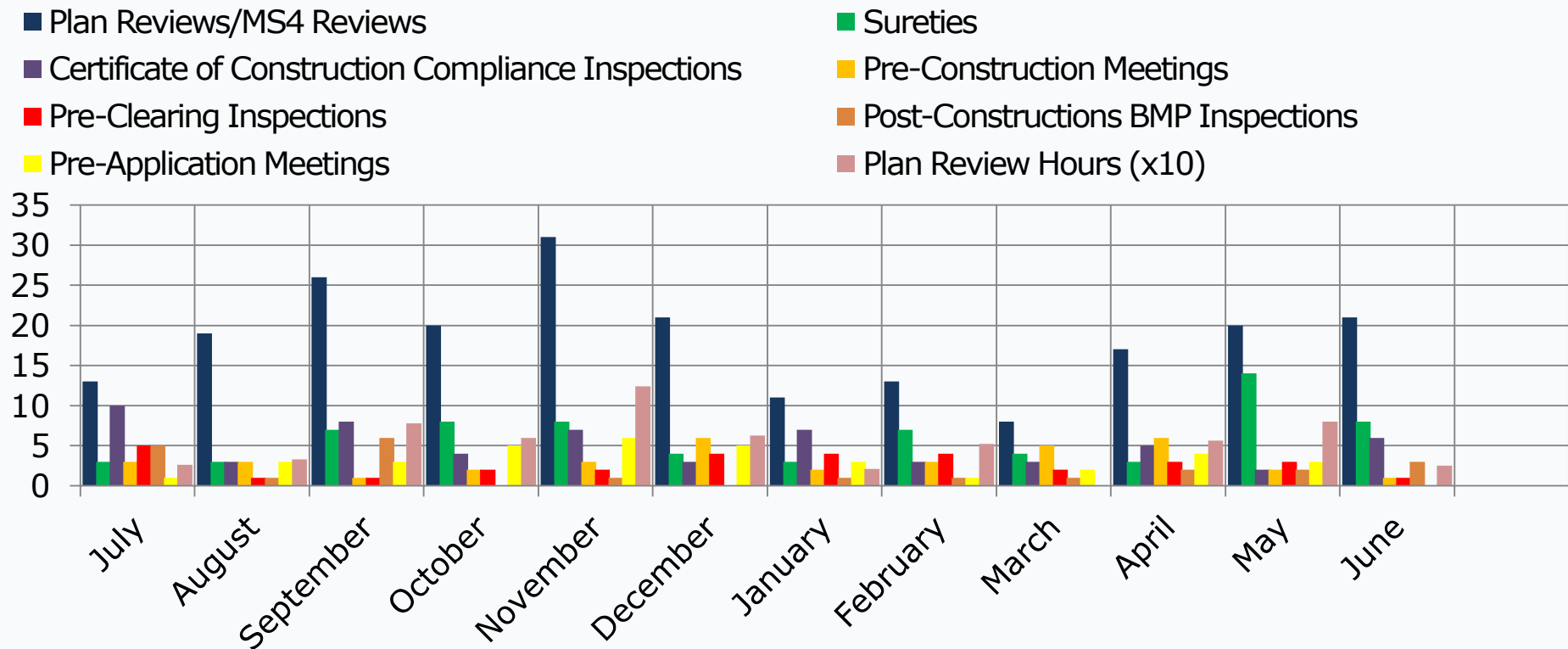


## MS4 Minimum Control Measure #4 - Construction Site Stormwater Runoff Control



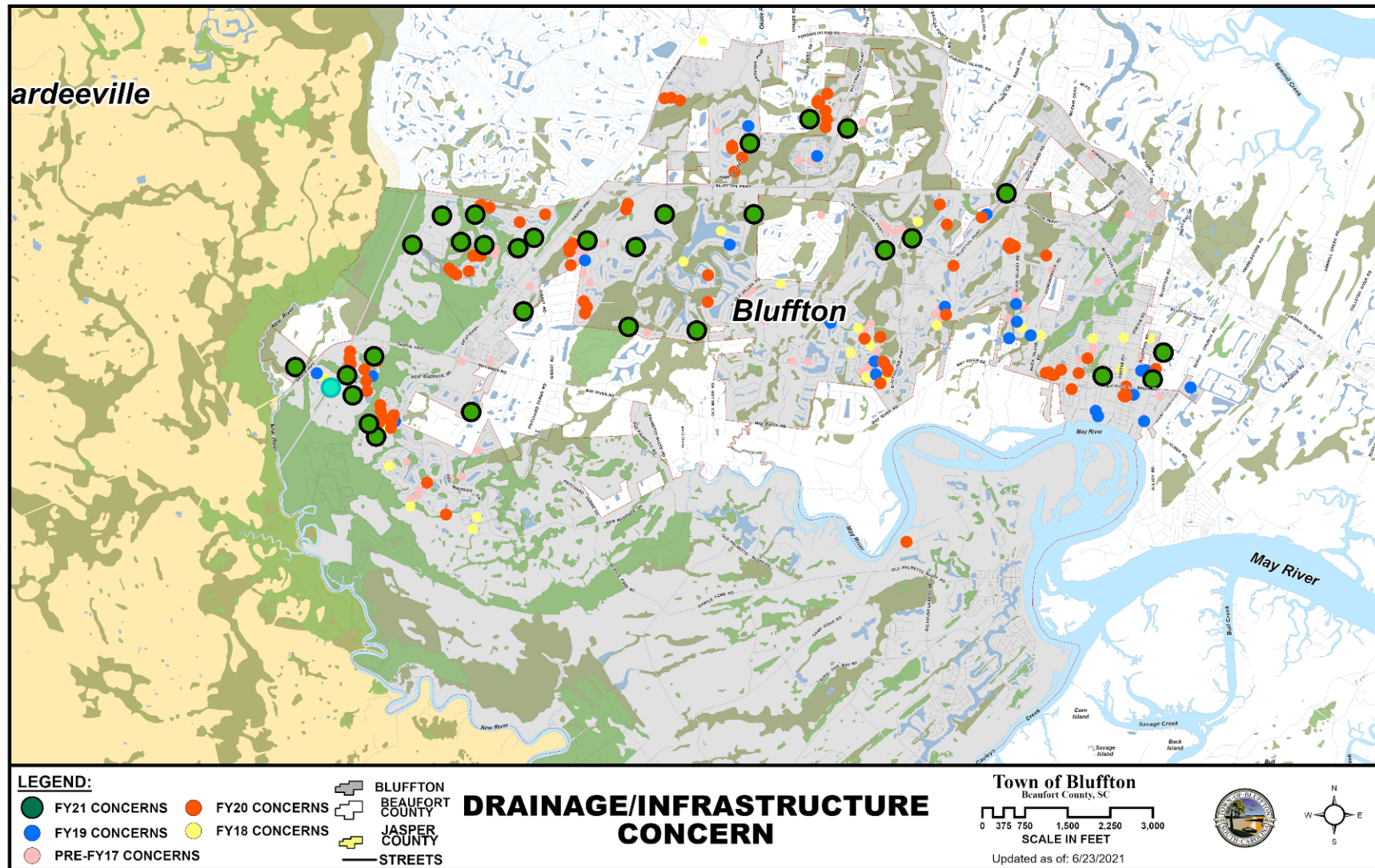
	Number of Sediment & Erosion Control Inspections	Number of Inspections Passed	Number of NTC Issued	Number of NOVs Issued	Number of SWO Issued	Number of NOV Enforcement Actions	Number of E&SC Meetings
FY 2021 YTD Totals	1,805	1,527	N/A	267	32	50	413
FY 2020 Totals	1,517	1187	128	185	16	9	496
FY 2019 Totals	1,688	1,384	254	72	N/A	7	403

## MS4 Minimum Control Measure #5 Stormwater Plan Review & Related Activity



	Plan Reviews MS4 Reviews	Sureties	Certificate of Construction Compliance Inspections	Pre- Construction Meetings	Pre-Clearing Inspections	Post Construction BMP Inspections	Pre-Application Meetings	Total Plan Review Hours
FY 2021 YTD Totals	186	61	55	24	24	22	3	483 Hrs.
FY 2020 Totals	176	53	46	36	17	8	36	789 Hrs.
FY 2019 Totals	208	52	53	47	37	27	63	1,040 Hrs.

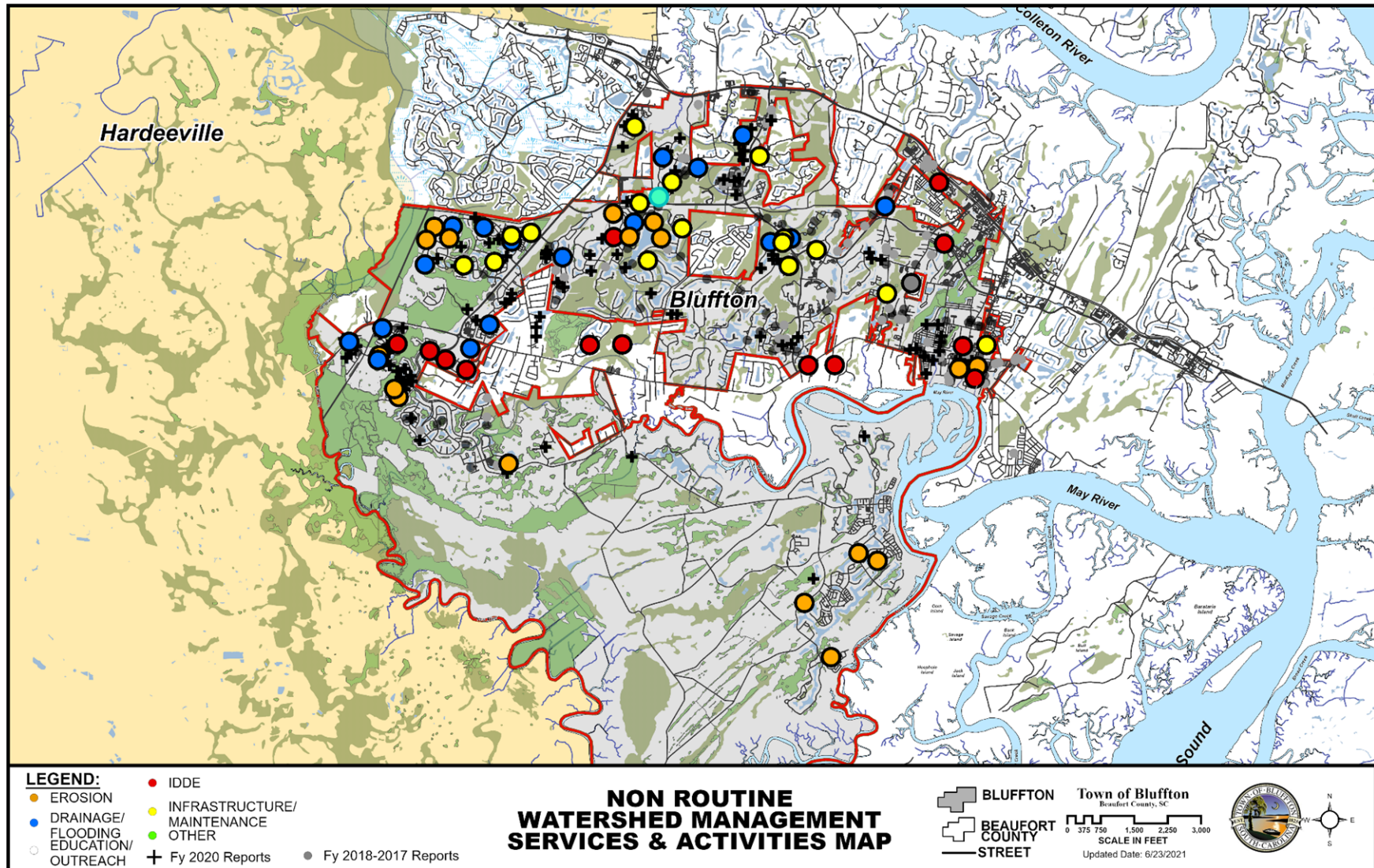
# Citizen Drainage, Maintenance and Inspections Concerns Map



	Number of Drainage Concerns Investigated	Number of Meetings
FY 2021 YTD Totals	45	39
FY 2020 Totals	68	76
FY 2019 Totals	54	59



# Citizen Request for Watershed Mngt. Services & Activities Map



	Number of Citizen Requests Investigated	Number of Meetings
FY 2021 YTD Totals	46	36
FY 2020 Totals	99	102
FY 2019 Totals	75	79

## RENTAL AND SPECIAL EVENTS ACTIVITY REPORT

<b><u>MONTHLY ACTIVITY 2021</u></b>	<u>Jan</u>	<u>Feb</u>	<u>Mar</u>	<u>Apr</u>	<u>May</u>	<u>Jun</u>	<u>Jul</u>	<u>Aug</u>	<u>Sep</u>	<u>Oct</u>	<u>Nov</u>	<u>Dec</u>	<u>YTD TOTALS</u>
Oyster Factory Park Rentals	1	1	7	3	4	9							25
Oyster Factory Park Special Events	1	1	0	3	5	1							11
Martin Family Park Rentals	0	0	0	1	1	0							2
Martin Family Park Special Events	0	0	0	0	4	6							10
Green Street Special Events	3	4	5	6	4	4							26
Buckwalter Place Park Rentals	0	0	1	0	0	0							1
Buckwalter Place Park Special Events	0	1	1	0	2	1							5
Field of Dreams Rentals Oscar Frazier Park	0	0	0	0	0	1							1
Field of Dreams Special Events Oscar Frazier Park	0	0	0	0	0	0							0
Rotary Community Center Rentals	1	4	2	7	10	12							36
Rotary Community Center Special Events	0	0	0	0	2	0							2
Rotary Community Center Showings	3	5	4	5	6	8							31
MONTHLY TOTALS	9	16	20	25	38	42	0	0	0	0	0	0	

## Public Works Activities Report

Week	# of Activities	Labor Cost	Equipment Cost	Other Cost	Total
FY21WK1	61	\$4,397.00	\$3,188.00		\$7,584.00
FY21WK2	56	\$5,474.00	\$3,574.00	\$121.00	\$9,168.00
FY21WK3	48	\$4,880.00	\$3,502.00		\$8,382.00
FY21WK4	62	\$5,828.00	\$3,970.00		\$9,799.00
FY21WK5	45	\$4,706.00	\$3,575.00		\$8,281.00
FY21WK6	54	\$5,645.00	\$3,114.00		\$9,126.00
FY21WK7	60	\$4,855.00	\$4,232.00		\$9,087.00
FY21WK8	67	\$5,118.00	\$4,221.00		\$9,339.00
FY21WK9	50	\$5,784.00	\$3,923.00		\$9,707.00
FY21WK10	54	\$6,131.00	\$4,248.00	\$21.00	\$10,400.00
FY21WK11	41	\$4,677.00	\$2,740.00		\$7,417.00
FY21WK12	70	\$5,580.00	\$2,587.00	\$326.00	\$8,494.00
FY21WK13	94	\$5,864.00	\$5,084.00		\$10,949.00
FY21WK14	49	\$6,171.00	\$4,261.00		\$10,431.00
FY21WK15	53	\$5,870.00	\$4,059.00		\$9,929.00
FY21WK16	62	\$5,239.00	\$3,531.00		\$8,771.00
FY21WK17	77	\$4,660.00	\$3,769.00	\$364.00	\$8,792.00
FY21WK18	45	\$4,679.00	\$3,417.00		\$8,096.00
FY21WK19	62	\$6,186.00	\$7,048.00		\$13,234.00
FY21WK20	41	\$4,135.00	\$2,633.00		\$6,768.00
FY21WK21	51	\$5,446.00	\$3,073.00		\$8,519.00
FY21WK22	39	\$3,229.00	\$3,599.00		\$6,828.00
FY21WK23	51	\$5,072.00	\$3,014.00		\$8,085.00
FY21WK24	76	\$6,073.00	\$5,257.00		\$11,329.00
FY21WK25	56	\$4,245.00	\$2,976.00		\$7,221.00
FY21WK26	38	\$1,890.00	\$1,936.00		\$3,826.00
FY21WK27	50	\$4,417.00	\$4,060.00		\$8,477.00
FY21WK28	69	\$5,753.00	\$4,185.00		\$9,938.00
FY21WK29	36	\$4,703.00	\$6,365.00		\$11,069.00
FY21WK30	69	\$5,100.00	\$4,540.00		\$9,640.00
FY21WK31	62	\$5,581.00	\$3,627.00		\$9,208.00
FY21WK32	89	\$5,648.00	\$3,808.00		\$9,456.00
FY21WK33	67	\$4,845.00	\$3,486.00		\$8,331.00
FY21WK34	77	\$6,031.00	\$3,791.00		\$9,823.00
FY21WK35	43	\$4,417.00	\$2,184.00		\$6,601.00
FY21WK36	92	\$5,213.00	\$2,690.00		\$7,903.00
FY21WK37	96	\$5,195.00	\$3,497.00		\$8,692.00
FY21WK38	65	\$4,150.00	\$2,500.00		\$6,729.00
FY21WK39	93	\$6,224.00	\$3,443.00		\$9,666.00
FY21WK40	70	\$4,835.00	\$3,940.00		\$8,775.00
FY21WK41	62	\$5,412.00	\$3,069.00		\$8,489.00
FY21WK42	84	\$5,503.00	\$4,387.00		\$9,890.00
FY21WK43	91	\$5,484.00	\$3,507.00		\$8,991.00
FY21WK44	55	\$4,474.00	\$3,779.00		\$8,252.00
FY21WK45	96	\$6,019.00	\$4,067.00		\$10,086.00
FY21WK46	66	\$3,839.00	\$3,340.00		\$7,180.00
FY21WK47	62	\$5,159.00	\$4,853.00		\$10,012.00
FY21WK48	51	\$5,245.00	\$2,781.00		\$8,026.00
FY21WK49	51	\$4,117.00	\$3,162.00		\$8,663.00
FY21WK50	113	\$5,250.00	\$3,506.00		\$8,755.00
FY21WK51	46	\$4,712.00	\$4,324.00		\$9,035.00
FY21WK52					
<b>Total</b>	<b>3217</b>	<b>\$259,160.00</b>	<b>\$189,422.00</b>	<b>\$832.00</b>	<b>\$451,249.00</b>