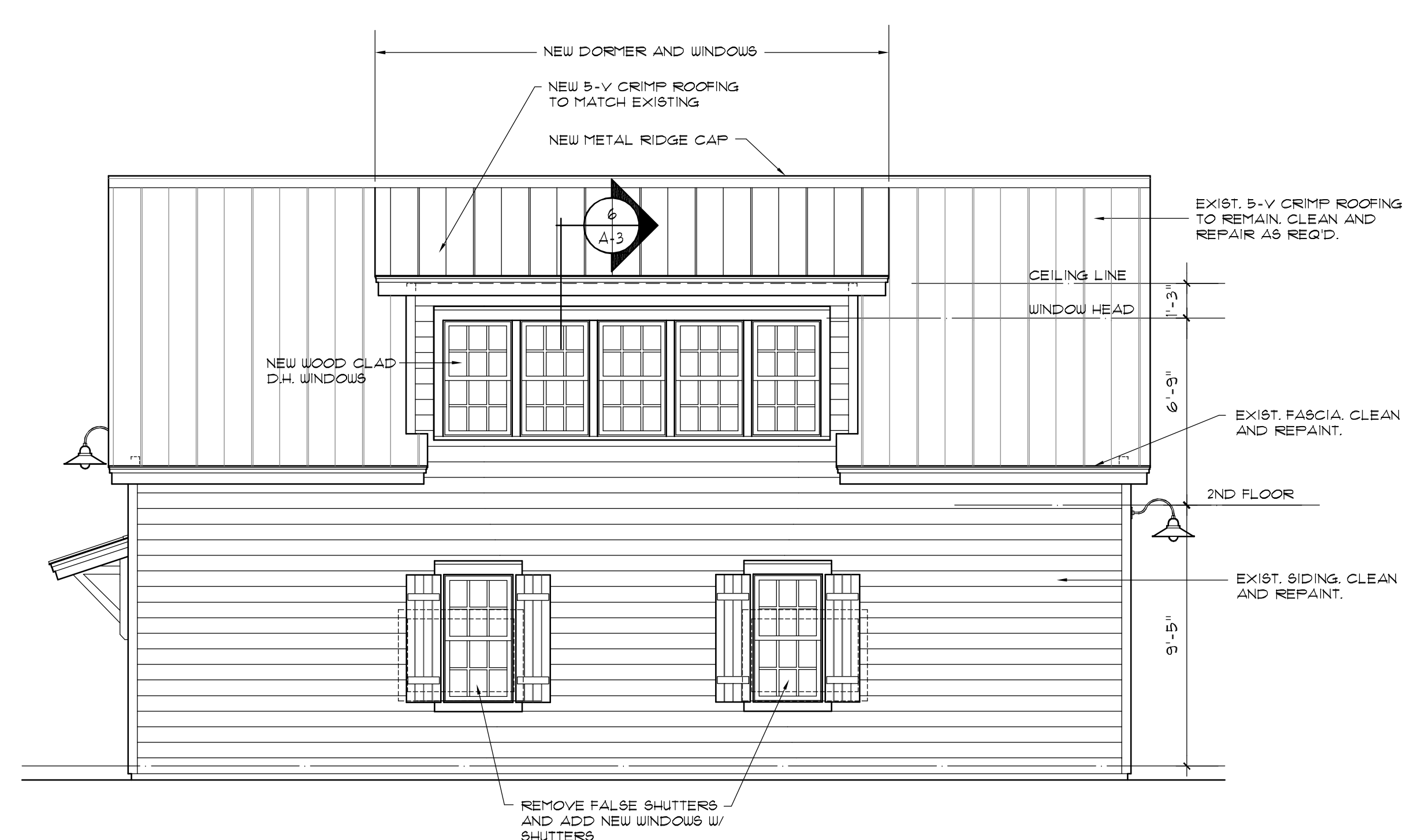


KAY STANLEY
ALTERATIONS TO GUEST COTTAGE AND GARAGE
127 BRIDGE STREET
BLUFFTON, SOUTH CAROLINA

REVISIONS :

McCLIESKEY AND ASSOCIATES ARCHITECTS PA
P.O. BOX 7125 HILTON HEAD ISLAND, SOUTH CAROLINA 29938
(843) 765-2222

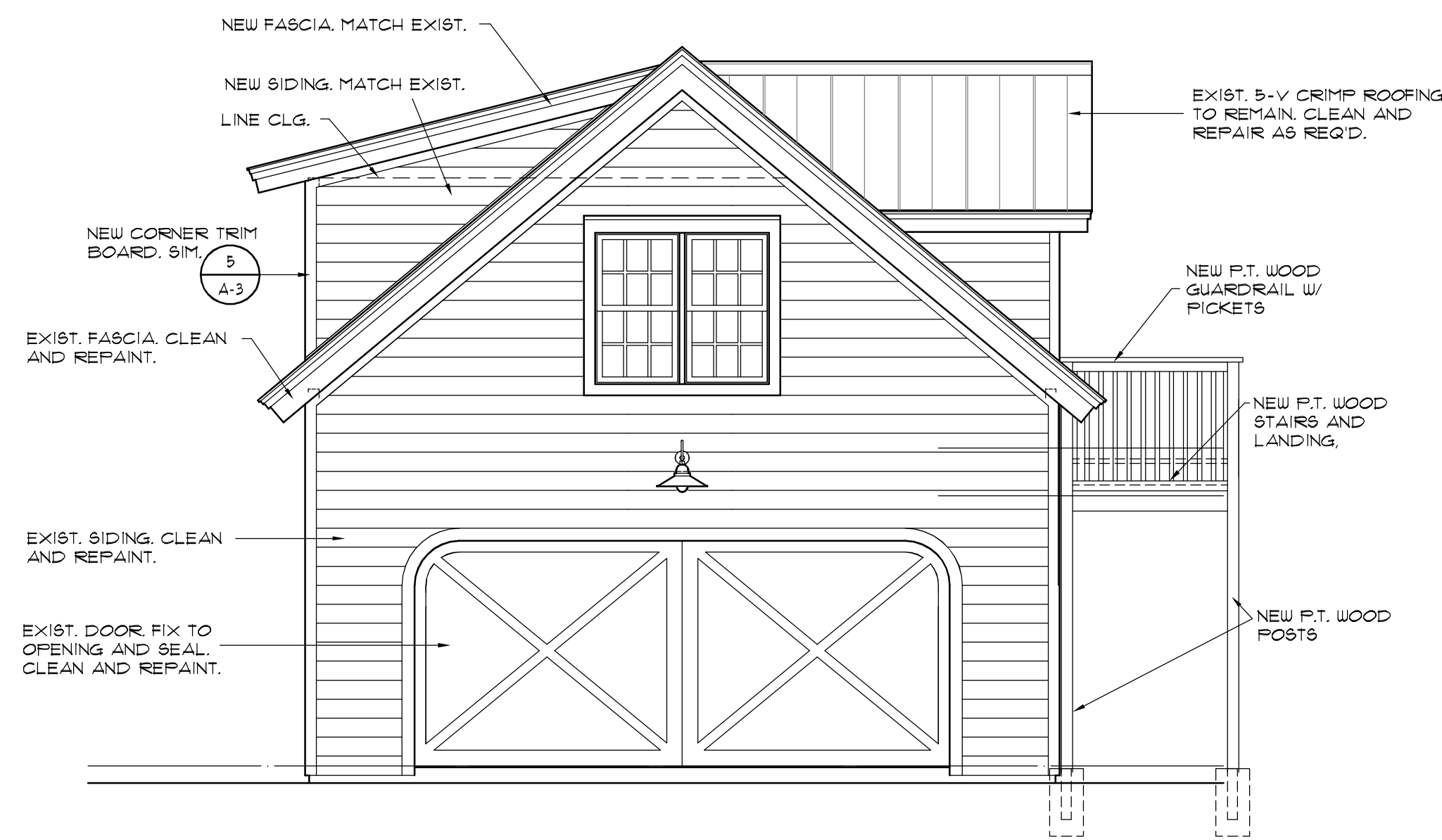
DATE OF ISSUE : 6/25/2021
DRAWN BY : SILM
CHECKED BY : SILM
PROJECT NO. : 2108



NORTH ELEVATION - GARAGE

SCALE: 1/4" = 1'-0"

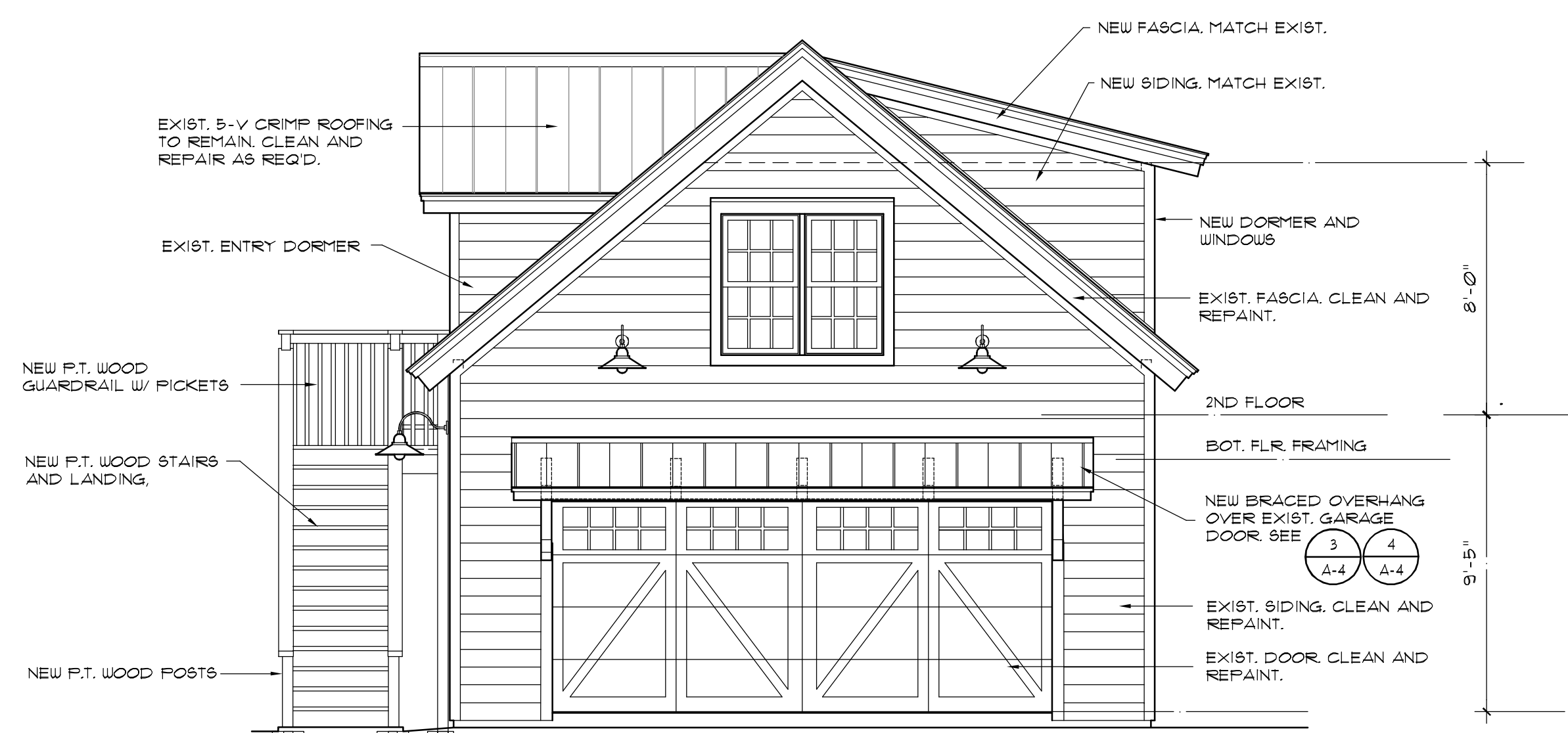
1
A-3



WEST ELEVATION - GARAGE

SCALE: 1/4" = 1'-0"

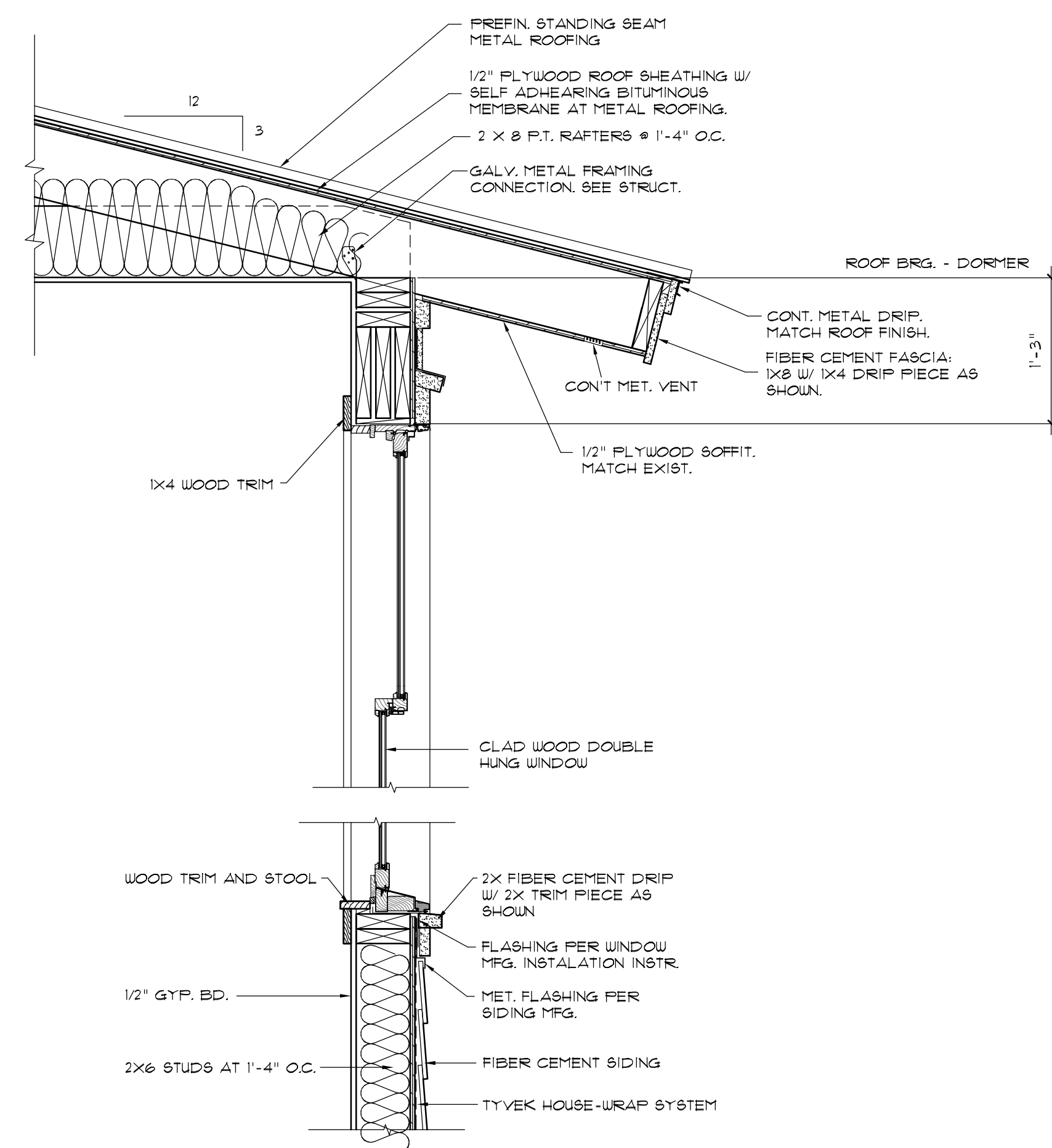
4
A-3



EAST ELEVATION - GARAGE

SCALE: 1/4" = 1'-0"

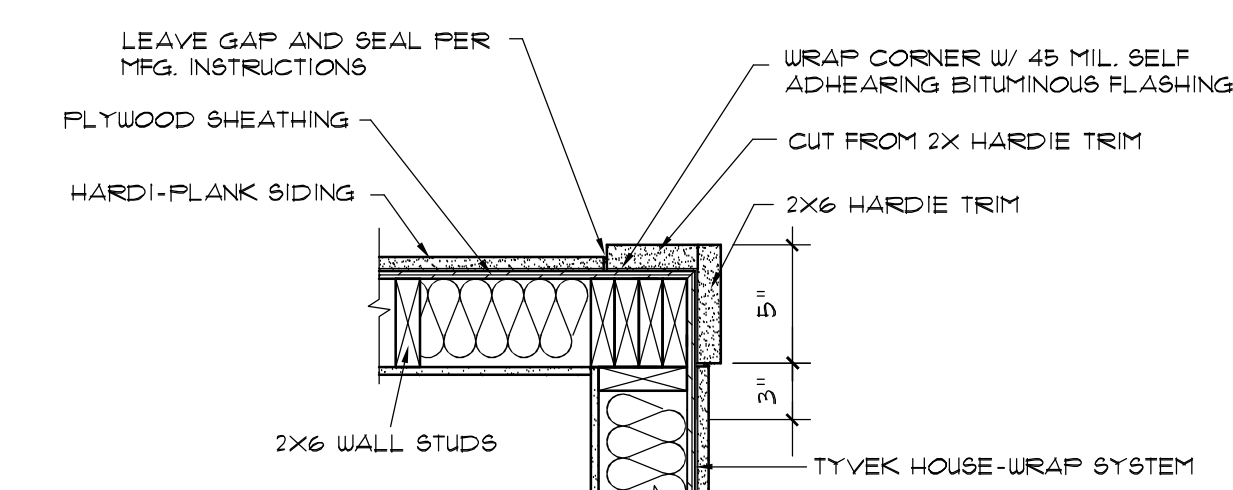
2
A-3



DETAIL - DORMER AT GARAGE

SCALE: 1" = 1'-0"

6
A-3



DETAIL - TYP. CORNER TRIM

SCALE: 1" = 1'-0"

5
A-3



SOUTH ELEVATION - GARAGE

SCALE: 1/4" = 1'-0"

3
A-3

KAY STANLEY
ALTERATIONS TO GUEST COTTAGE AND GARAGE
127 BRIDGE STREET
BLUFFTON, SOUTH CAROLINA

REVISIONS :

McCLISKEY AND ASSOCIATES ARCHITECTS P.A.
P.O. BOX 7125 HILTON HEAD ISLAND, SOUTH CAROLINA 29938
(843) 765-2222

PROJECT NO. : 2108

CHECKED BY : SIM

DRAWN BY : SIM

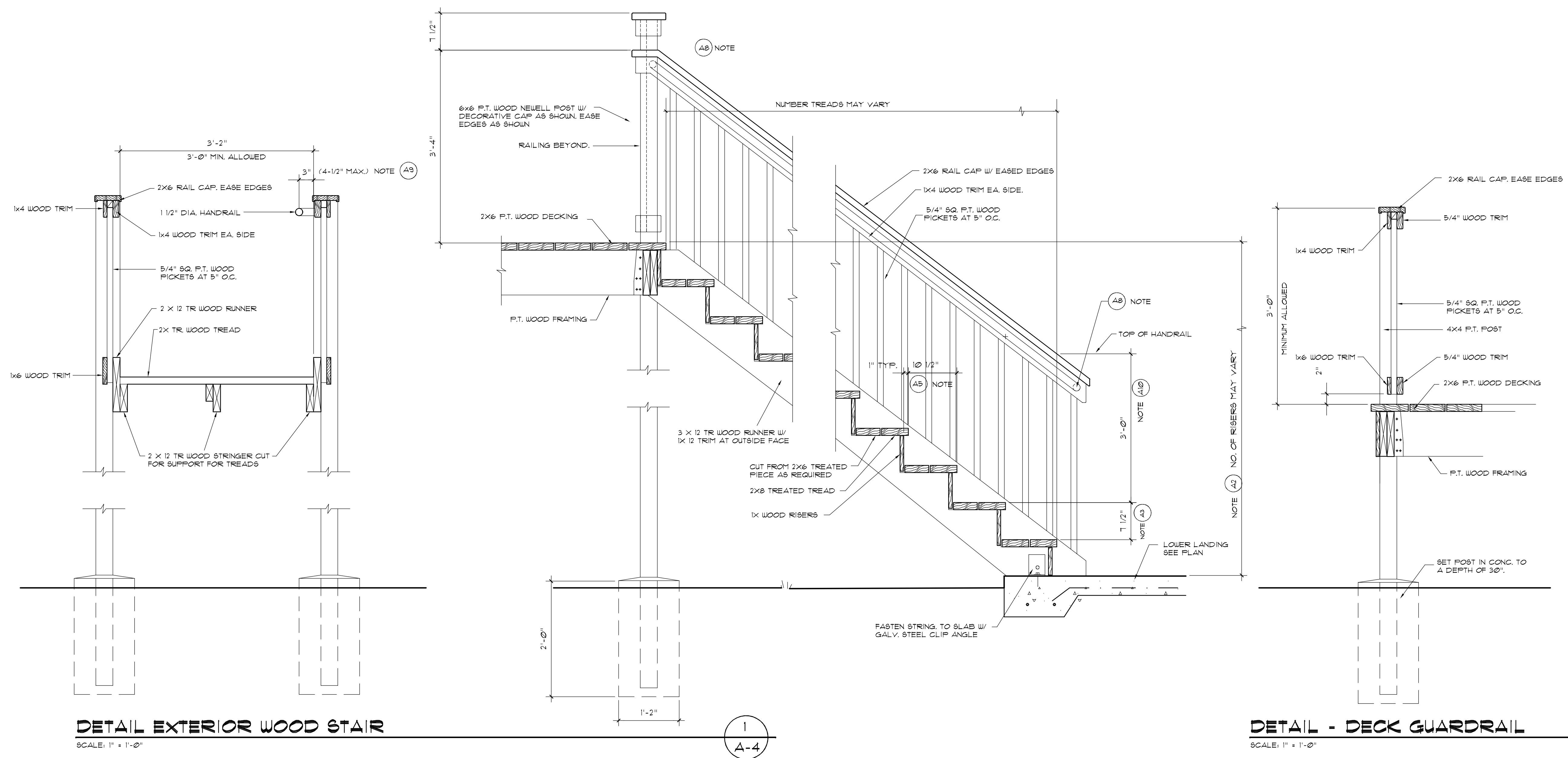
DATE OF ISSUE : 6/25/2021

ISSUED FOR REVIEW

DATE: 12/29/2021

NOT FOR CONSTRUCTION

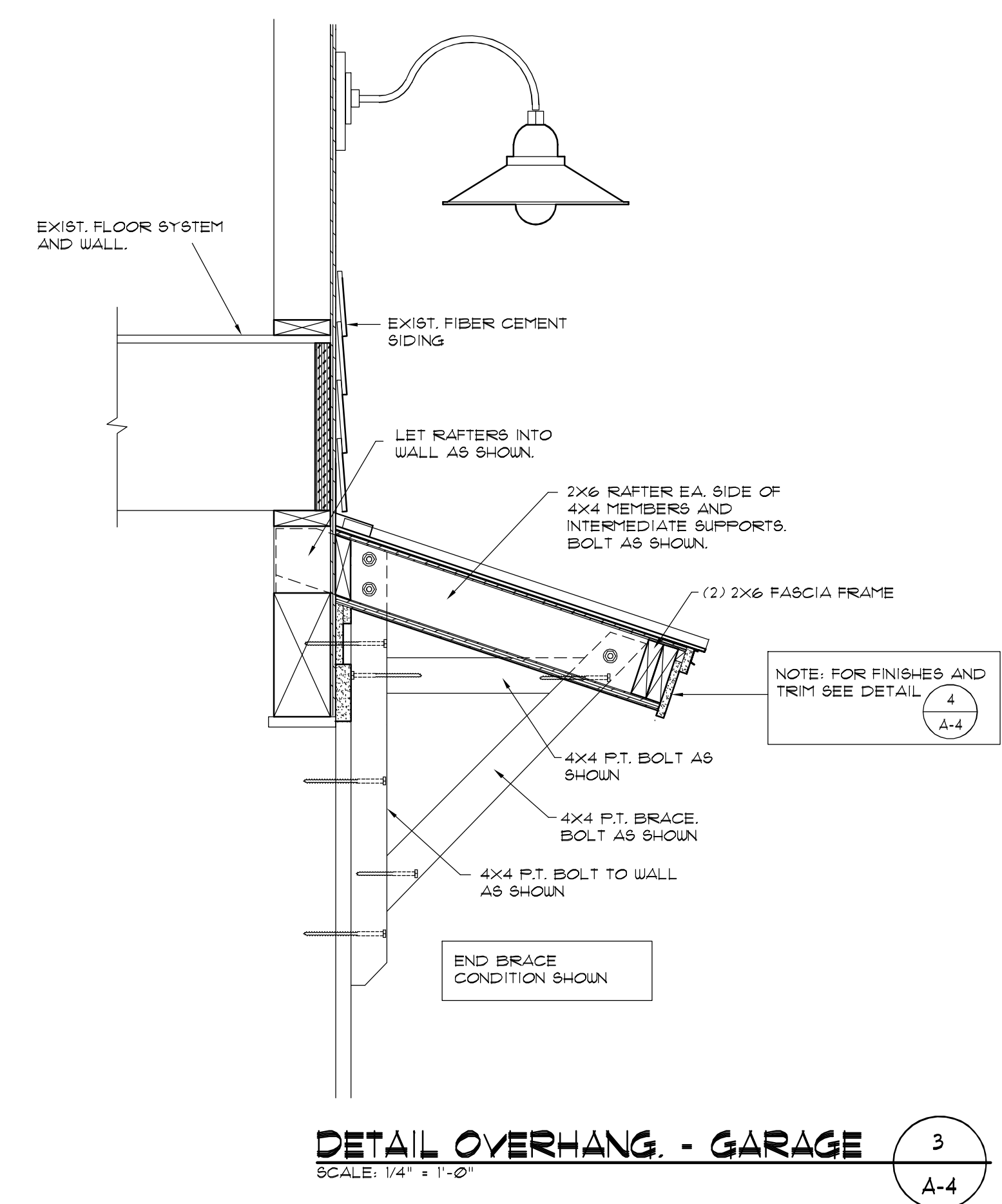
A-3



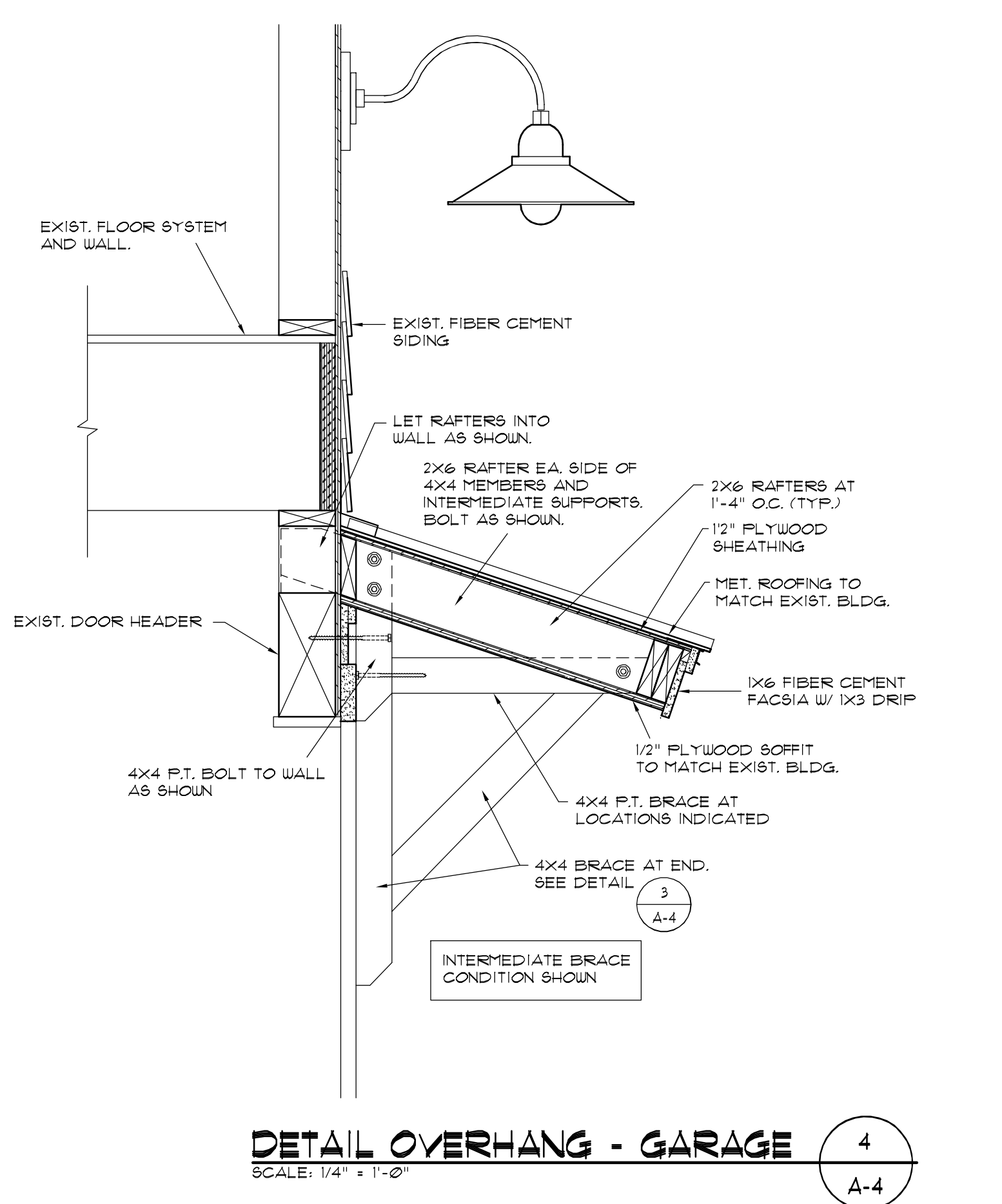
- STAIR NOTES**
- (A1) IT IS RECOMMENDED THAT THE RELATIONSHIP OF RISER HEIGHT TO TREAD WIDTH BE SUCH THAT THE SUM OF 2 RISERS + 1 TREAD IS EQUAL TO OR BETWEEN 24 AND 25.
 - (A2) THE NUMBER OF RISERS MAY VARY DEPENDING ON THE DISTANCE FROM THE ON GRADE PLATFORM TO THE TOP OF THE LANDING.
 - (A3) RISER HEIGHT MAY BE ADJUSTED TO ACCOMMODATE THE FLOOR TO FLOOR HEIGHT HOWEVER MAXIMUM RISER HEIGHT ALLOWED IS 7-3/4".
 - (A4) THE DIFFERENCE IN RISER HEIGHT CANNOT EXCEED 3/8" FROM THE LARGEST TO THE SMALLEST RISER IN A STAIR RUN.
 - (A5) MINIMUM TREAD WIDTH ALLOWED IS 10".
 - (A6) TREADS SHALL HAVE A NOSING WHICH PROJECTS 1" AS SHOWN.
 - (A7) MAXIMUM STEP AT DOOR IS 1-3/4" FROM TOP OF THRESHOLD TO TOP OF DECK 3" TO 4" FROM FLOOR TO TOP OF DECK IS RECOMMENDED.
 - (A8) HANDRAILS SHALL RETURN TO NEWELL POSTS AS SHOWN. RETURNS SHALL OCCUR ABOVE OR BEYOND TOP AND BOTTOM STEP AS SHOWN.
 - (A9) HANDRAILS ARE ALLOWED TO PROJECT INTO THE STAIR WIDTH A MAXIMUM OF 4-1/2".
 - (A10) THE HEIGHT OF STAIR HANDRAILS IS ALLOWED TO BE BETWEEN 34" AND 38" ABOVE THE TIP OF STAIR NOSINGS.

DETAIL EXTERIOR WOOD STAIR
SCALE: 1" = 1'-0"

DETAIL - DECK GUARDRAIL
SCALE: 1" = 1'-0"



DETAIL OVERHANG - GARAGE
SCALE: 1/4" = 1'-0"



DETAIL OVERHANG - GARAGE
SCALE: 1/4" = 1'-0"

KAY STANLEY
ALTERATIONS TO GUEST COTTAGE AND GARAGE
127 BRIDGE STREET
BLUFFTON, SOUTH CAROLINA

REVISIONS :

McCLISKY AND ASSOCIATES ARCHITECTS PA
HILTON HEAD ISLAND, SOUTH CAROLINA 29938
(843) 765-2222

DATE OF ISSUE : 6/25/2021
DRAWN BY : SIM
CHECKED BY : SIM
PROJECT NO. : 2108

ISSUED FOR REVIEW
DATE: 12/29/2021
NOT FOR CONSTRUCTION

A-4



Front - Facing May River/ Barn and Cook's Cottage



Left - Facing 131 Bridge Street



Left Side- Facing 131 Bridge Street



Rear - Facing Bridge Street



Right - Facing 123 Bridge Street

ATTACHMENT 8

The screenshot displays the Therma-Tru website's product page for the Smooth-Star door. The browser's address bar shows the URL: thermatru.com/explore-products/door-style/S6042-SDL?finishId=alpine. The website header includes the Therma-Tru logo and navigation links such as "Newsroom", "Shop Parts and Samples", "Careers", and "Contact Us". A search bar is located at the top right with the placeholder text "Search for doors, products...".

The main content area features a large image of the Smooth-Star door, which is a white half-lite plank door with a grid of glass panes. To the left of the main image is a vertical sidebar with social media icons (Facebook, Twitter, Pinterest, Email, and a share icon) and a "SHARE" button. Above the main image is a smaller thumbnail of the door with a red border.

The product details section on the right includes the title "Smooth-Star®", a heart icon, and the description "Half Lite 1 Panel Plank | Style No. S6042-SDL". It shows a 4-star rating with 17 reviews and a "Write a review" link. Below this, it states "3 Available Sizes" and a "VIEW ON HOME" button with a camera icon.

The "THERMA-TRU VIBRANT PAINT OPTIONS" section displays a row of eight color swatches: white, light green, grey, red, dark red, dark blue, brown, and black. Below the swatches is a link to a "finishing page" for more information on finishing options.

The "GLASS OPTIONS" section features two dropdown menus. The first is set to "Clear" and the second is set to "Colonial 9 Lite 3Wx3H Simulated Divided Lites".

At the bottom of the product section are three buttons: "DESIGN YOUR DOOR", "WHERE TO BUY", and "ORDER FINISH SAMPLES".

A cookie consent banner is visible at the bottom of the page, stating: "We use cookies on this website. We use these cookies to enhance your user experience, improve the quality of our site, and to show you marketing that is more likely to be relevant to your interests. We also allow third parties, including our advertising partners, to place cookies on our websites. By continuing to use this website, you consent to the placement and use of cookies as described in our Privacy Policy. If you would like to disable the use of all cookies, including those placed by advertisers, please use your browser's settings to reject cookies on this site." A "Privacy Policy" link and an "Accept" button are provided.

The Windows taskbar at the bottom shows the search bar, task view, and various application icons. The system tray on the right indicates the time is 4:35 PM on 11/30/2021, with a battery level of 99% and weather information for 61°F Sunny.