

RAISED FLOOR OF SIDE BAY, WHICH IS A NEW ADDITION, IS TO BE REMOVED



FRONT ELEVATION

- REPLACE ROOF WITH NEW CORRUGATED METAL
- REMOVE PAINT WHERE SURFACE DETERIORATION, PREPARE FOR REPAINTING
- PAINT ALL WOOD IN MATCHING COLOR, WHITE SIDING, BLACK WINDOWS, DOORS TO BE BLACK
- PEST MANAGEMENT PLAN HAS BEEN IMPLEMENTED
- REPAIR DAMAGED WOOD COMPONENTS IN PLACE WHERE POSSIBLE. REPLACE IN KIND, EXTENSIVELY DETERIORATED OR MISSING BOARDS. MATCH THE OLD IN MATERIAL, DESIGN, SCALE AND FINISH
- CLEAN AND REPAIR EXISTING WINDOWS AND CASING. PROTECT AND RETAIN HISTORIC GLASS
- NEW CONCRETE SLAB ON GRADE IS TO BE PLACED IN EACH OF THE (2) SIDE BAYS



REAR WINDOW, CENTER BAY

CLEAN WINDOW PANES; TRIM TO BE REPLACED WITH SAME PROFILE



REAR ELEVATION



FRONT RIGHT CORNER

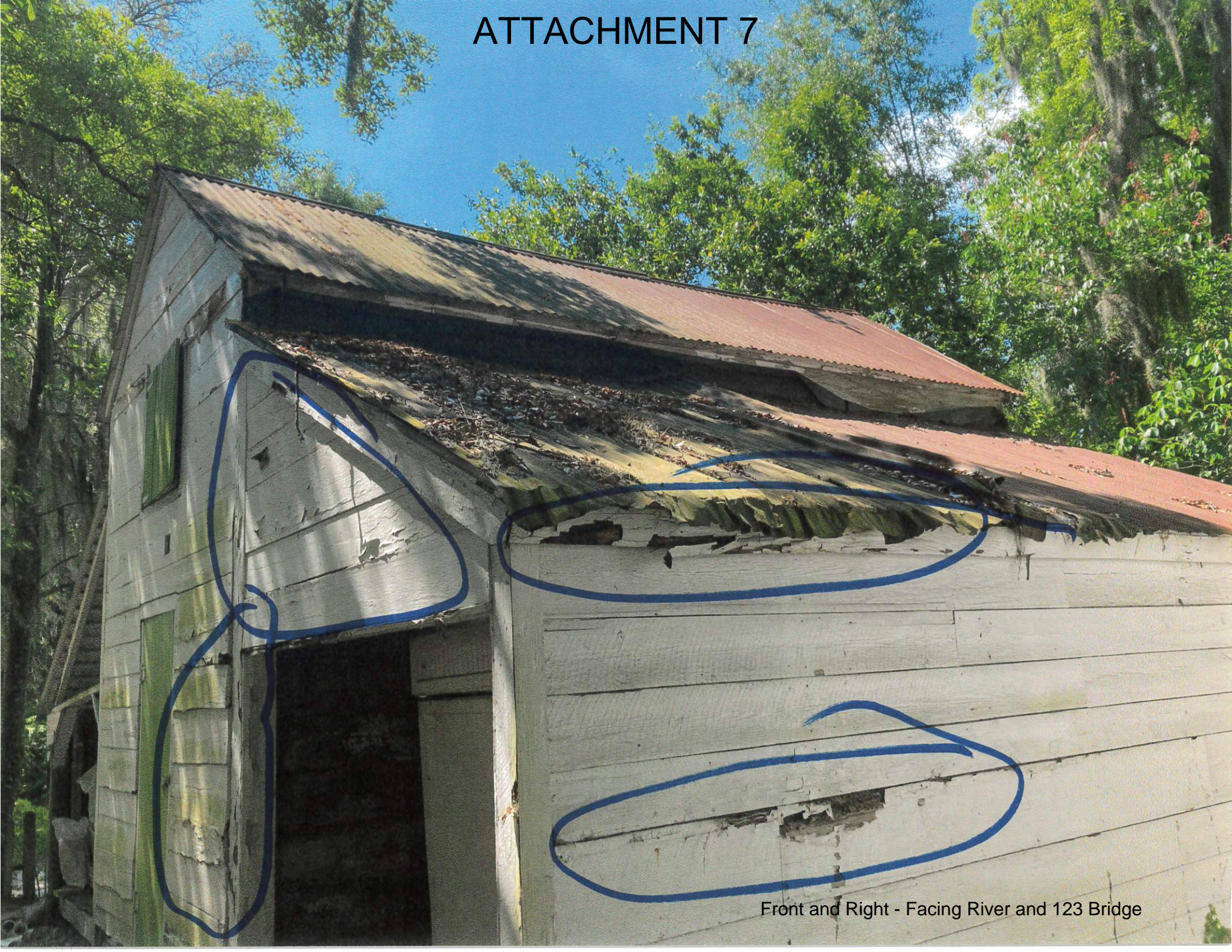


RIGHT REAR CORNER

SEAL:

SEAL:

ATTACHMENT 7



Front and Right - Facing River and 123 Bridge

ATTACHMENT 7



Right Side - Facing 123 Bridge

ATTACHMENT 7



Front - Facing May River/ Main House

ATTACHMENT 7



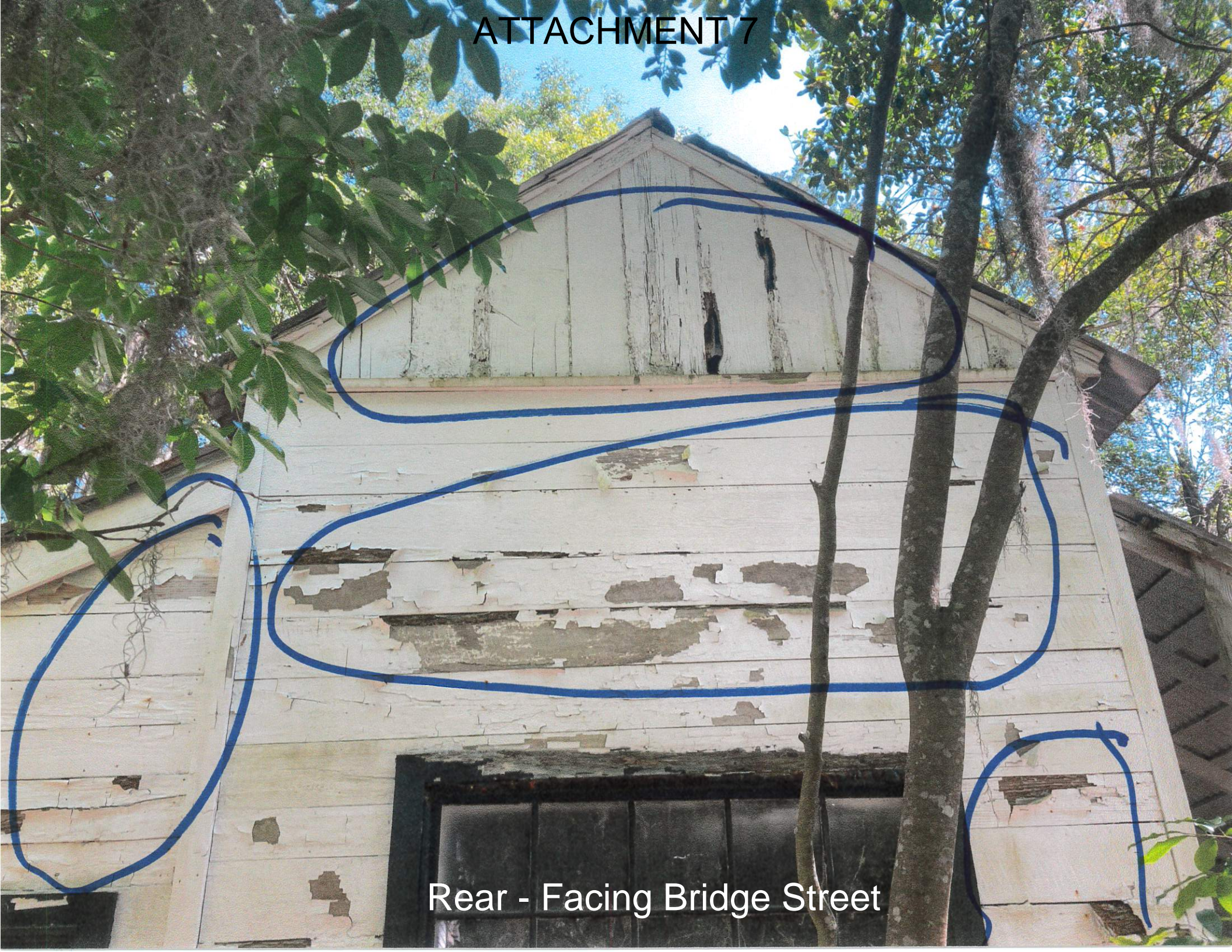
Left Side - Facing 131 Bridge Street

ATTACHMENT 7



Rear - Facing Bridge Street

ATTACHMENT 7



Rear - Facing Bridge Street

ATTACHMENT 7



Rear - Facing Bridge Street