

Project:



Cypress Ridge
Mill Creek Blvd.
Bluffton, South Carolina

Issued for:

Site Plan Review	03/29/2023
Site Plan Review	05/12/2023
Site Plan Review	07/24/2023
Site Plan Review	10/25/2023
Site Plan Review	10/30/2023

Roof Plan marches
Option 2

Subject:

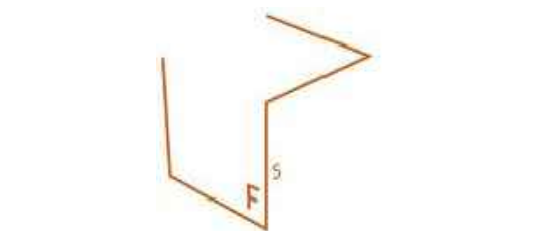
ROOF PLANS

Project Owner:



814 Services, LLC
1695 Twelve Mile Road
Suite 100
Berkley, MI 48072

Project Consultants:



FormSurfaces
Design Group

10913 Marcello Lane
Whitmore Lake, MI 48189



504 S. Creyts Road, Suite B
Lansing, MI 48917

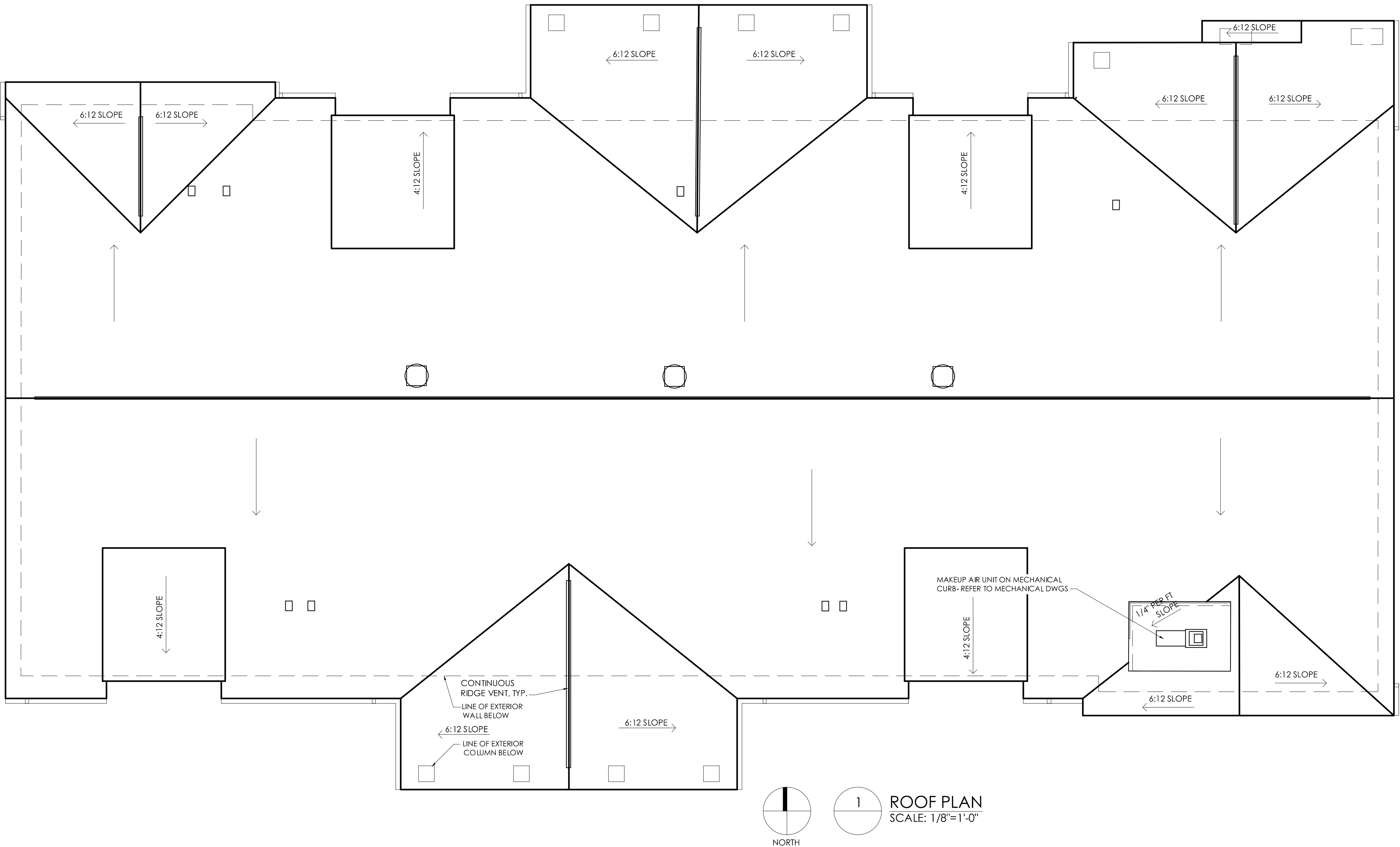
Job No.

20211019

Sheet No.

A 104

NOT FOR CONSTRUCTION



Project:



Cypress Ridge
Mill Creek Blvd.
Bluffton, South Carolina

Issued for:

Site Plan Review 02/17/2023
Site Plan Review 03/29/2023
Site Plan Review 05/12/2023
Site Plan Review 07/24/2023
Site Plan Review 09/25/2023
Site Plan Review 10/25/2023
Site Plan Review 10/29/2023

Subject:

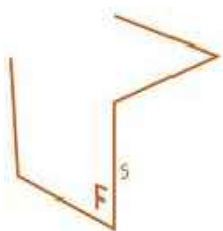
ELEVATIONS

Project Owner:

EIGHT

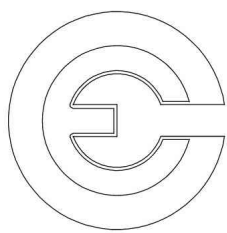
814 Services, LLC
1695 Twelve Mile Road
Suite 100
Berkley, MI 48072

Project Consultants:



FormSurfaces
Design Group

10913 Marcello Lane
Whitmore Lake, MI 48189



conn engineering
consultants, inc.
commercial/industrial/institutional/residential
structural engineering
107 n. bridge
lansing, mi 48201
p. 810.458.4350
www.connengineering.com



504 S. Creyts Road, Suite B
Lansing, MI 48917

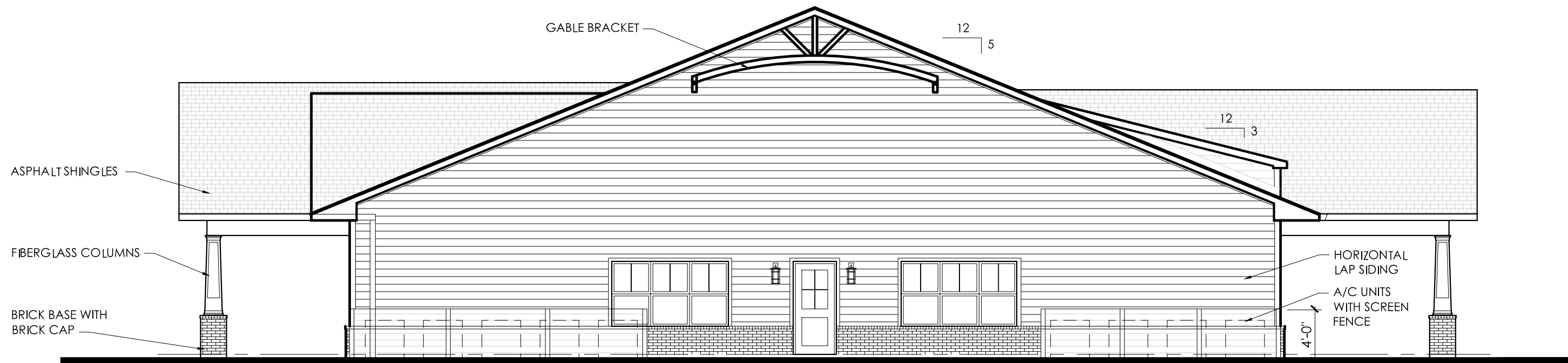
Job No.

20211019

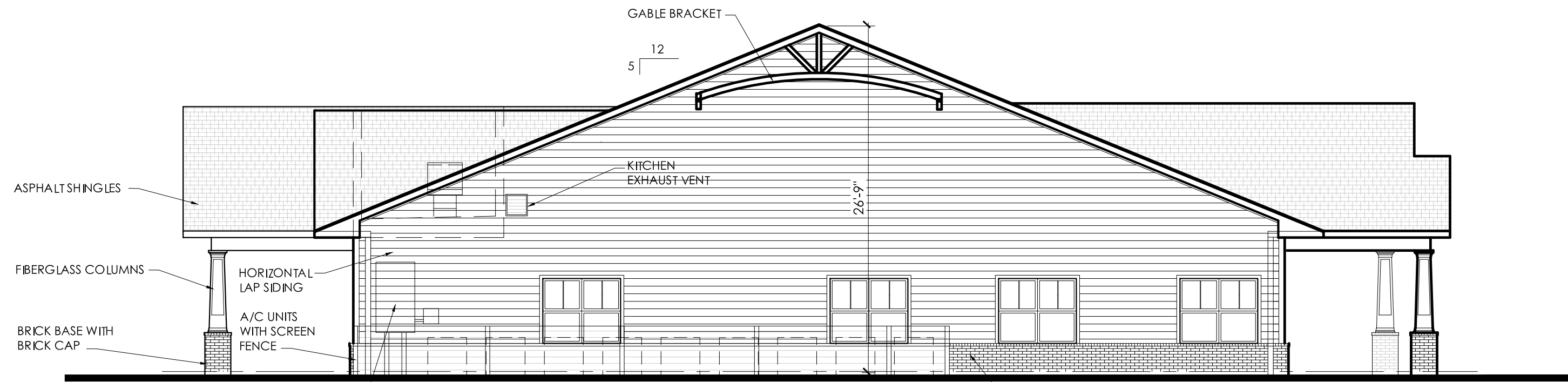
Sheet No.

A 201

EXTERIOR FINISH LEGEND		
MATERIAL	MANUFACTURER	DESCRIPTION AND COLOR
ROOF		
ASPHALT SHINGLES	GAF	STYLE: TIMBERLINE HDZ COLOR: OYSTER GREY
SOFFIT PANELS	JAMES HARDIE	STYLE: HARDIESOFFIT PANELS. VENTED CEDARMILL COLOR: WHITE
WALL		
HORIZONTAL LAP SIDING	JAMES HARDIE	STYLE: HARDIEPLANK LAP SIDING, CEDARMILL COLOR: MONTEREY TAUPE
SIDING TRIM	JAMES HARDIE	STYLE: SMOOTH COLOR: WHITE WINDOWS AND DOOR SURROUNDS, SOFFIT
BRICK	GENERAL SHALE	STYLE: MODULAR BRICK, RUNNING BOND COLOR: SAVANNAH GREY
FIBERGLASS COLUMNS	ENDURA-CRAFT	STYLE: CRAFTSMAN STYLE, TAPERED, RECESSED PANEL COLOR: WHITE
LOUVER	FYPON	STYLE: 33" ROUND, POLYURETHANE COLOR: WHITE
SCREEN WALL A/C UNITS AT GRADE		STYLE: VINYL COLOR: BEIGE, HEIGHT: 3'-2" (MIN)



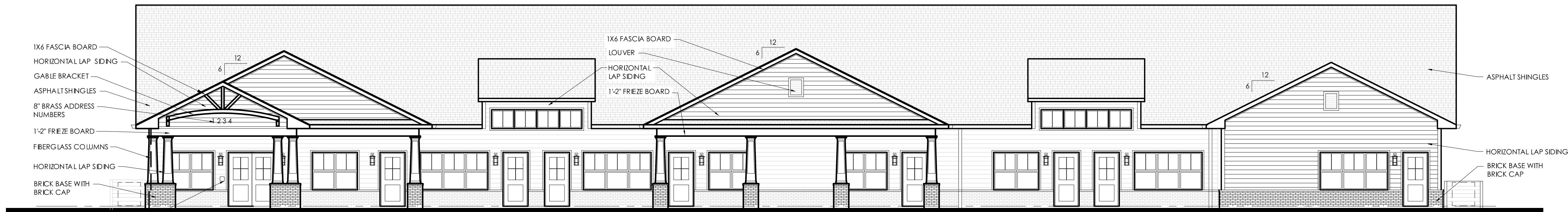
4 WEST ELEVATION
A 101 SCALE: 1/8"=1'-0"



3 EAST ELEVATION
A 101 SCALE: 1/8"=1'-0"



2 SOUTH ELEVATION
A 101 SCALE: 1/8"=1'-0"



1 NORTH ELEVATION
A 101 SCALE: 1/8"=1'-0"

Option 1

NOT FOR CONSTRUCTION

Project:



Cypress Ridge
Mill Creek Blvd.
Bluffton, South Carolina

Issued for:

Site Plan Review 10/29/2023

Subject:

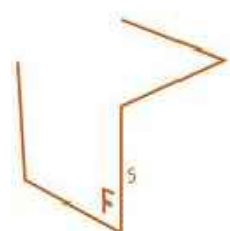
ELEVATIONS

Project Owner:

EIGHT

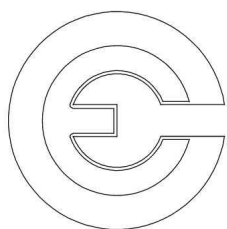
814 Services, LLC
1695 Twelve Mile Road
Suite 100
Berkley, MI 48072

Project Consultants:



FormSurfaces
Design Group

10913 Marcello Lane
Whitmore Lake, MI 48189



conn engineering
consultants, inc.
commercial/industrial/institutional/residential
structural engineering
107 n. bridge
lansing, mi 48201
p. 810.458.4350
www.connengineering.com



504 S. Creyts Road, Suite B
Lansing, MI 48917

Job No.

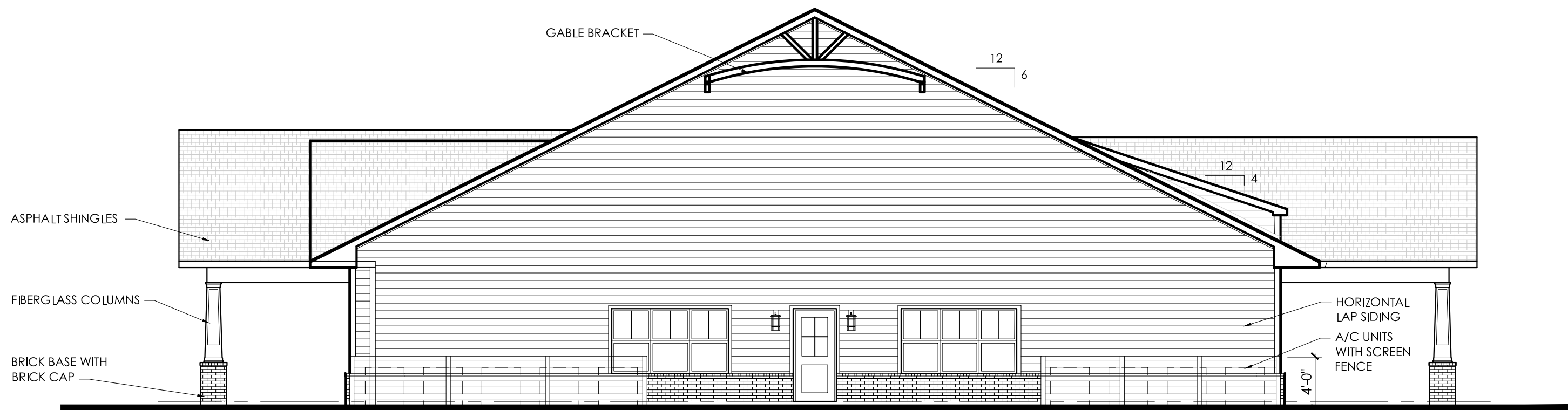
20211019

Sheet No.

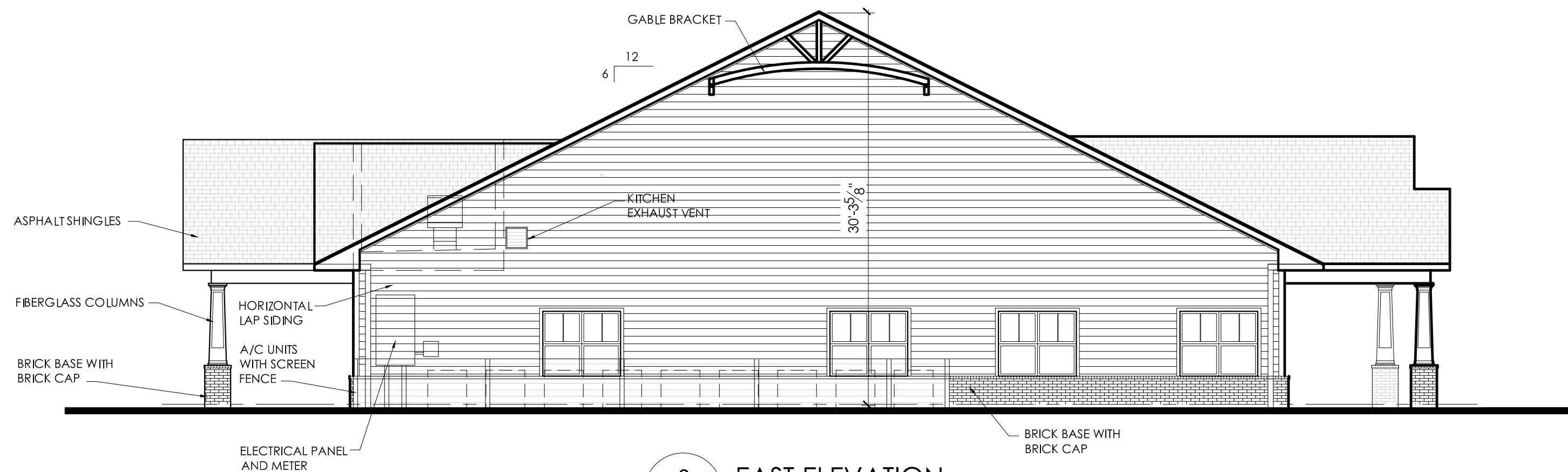
A 201

NOT FOR CONSTRUCTION

EXTERIOR FINISH LEGEND		
MATERIAL	MANUFACTURER	DESCRIPTION AND COLOR
ROOF		
ASPHALT SHINGLES	GAF	STYLE: TIMBERLINE HDZ COLOR: OYSTER GREY
SOFFIT PANELS		
SOFFIT PANELS	JAMES HARDIE	STYLE: HARDIESOFFIT PANELS. VENTED CEDARMILL COLOR: WHITE
WALL		
HORIZONTAL LAP SIDING	JAMES HARDIE	STYLE: HARDEIPLANK LAP SIDING, CEDARMILL COLOR: MONTEREY TAUPE
SIDING TRIM	JAMES HARDIE	STYLE: SMOOTH COLOR: WHITE WINDOWS AND DOOR SURROUNDS, SOFFIT
BRICK	GENERAL SHALE	STYLE: MODULAR BRICK, RUNNING BOND COLOR: SAVANNAH GREY
FIBERGLASS COLUMNS	ENDURA-CRAFT	STYLE: CRAFTSMAN STYLE, TAPERED, RECESSED PANEL COLOR: WHITE
LOUVER	FYPON	STYLE: 33" ROUND, POLYURETHANE COLOR: WHITE
SCREEN WALL A/C UNITS AT GRADE		STYLE: VINYL COLOR: BEIGE, HEIGHT: 3'-2" (MIN)



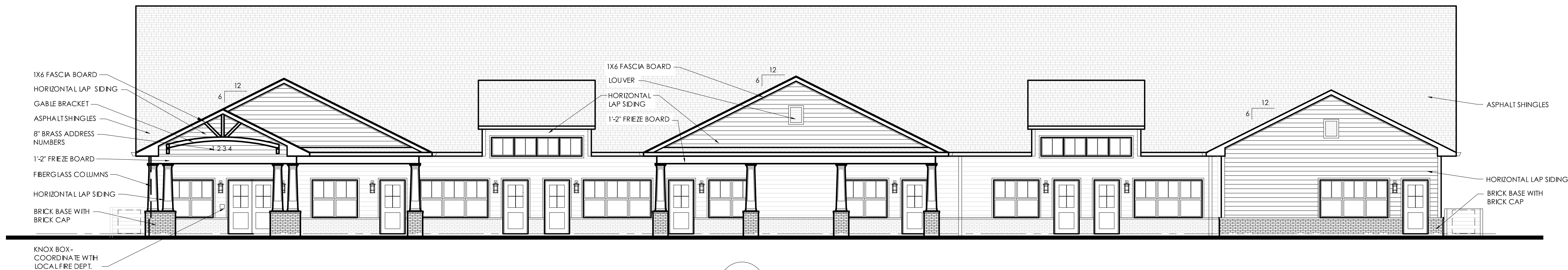
4 WEST ELEVATION
A 101 SCALE: 1/8"=1'-0"



3 EAST ELEVATION
A 101 SCALE: 1/8"=1'-0"



2 SOUTH ELEVATION
A 101 SCALE: 1/8"=1'-0"

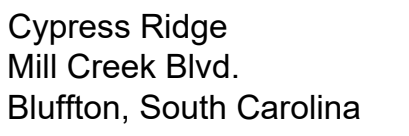


1 NORTH ELEVATION
A 101 SCALE: 1/8"=1'-0"

Option 2

DO NOT SCALE PRINTS. USE FIGURED DIMENSIONS. © 2023 FSDG

Project:



Issued for:

Site Plan Review 11/08/2023

Option 3

Subject:

ELEVATIONS

Project Owner:

814 Services, LLC
1695 Twelve Mile Road
Suite 100
Berkley, MI 48072

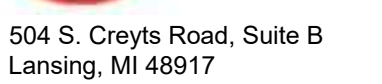
Project Consultants:



10913 Marcello Lane
Whitmore Lake, MI 48189



**conn engineering
consultants, inc.**
commercial • industrial • institutional • residential
structural engineering
107 n. bridge
linden, mi 48451
p. 810.458.4350
www.connengineering.com



Job No.

20211019

Sheet No.

A 201

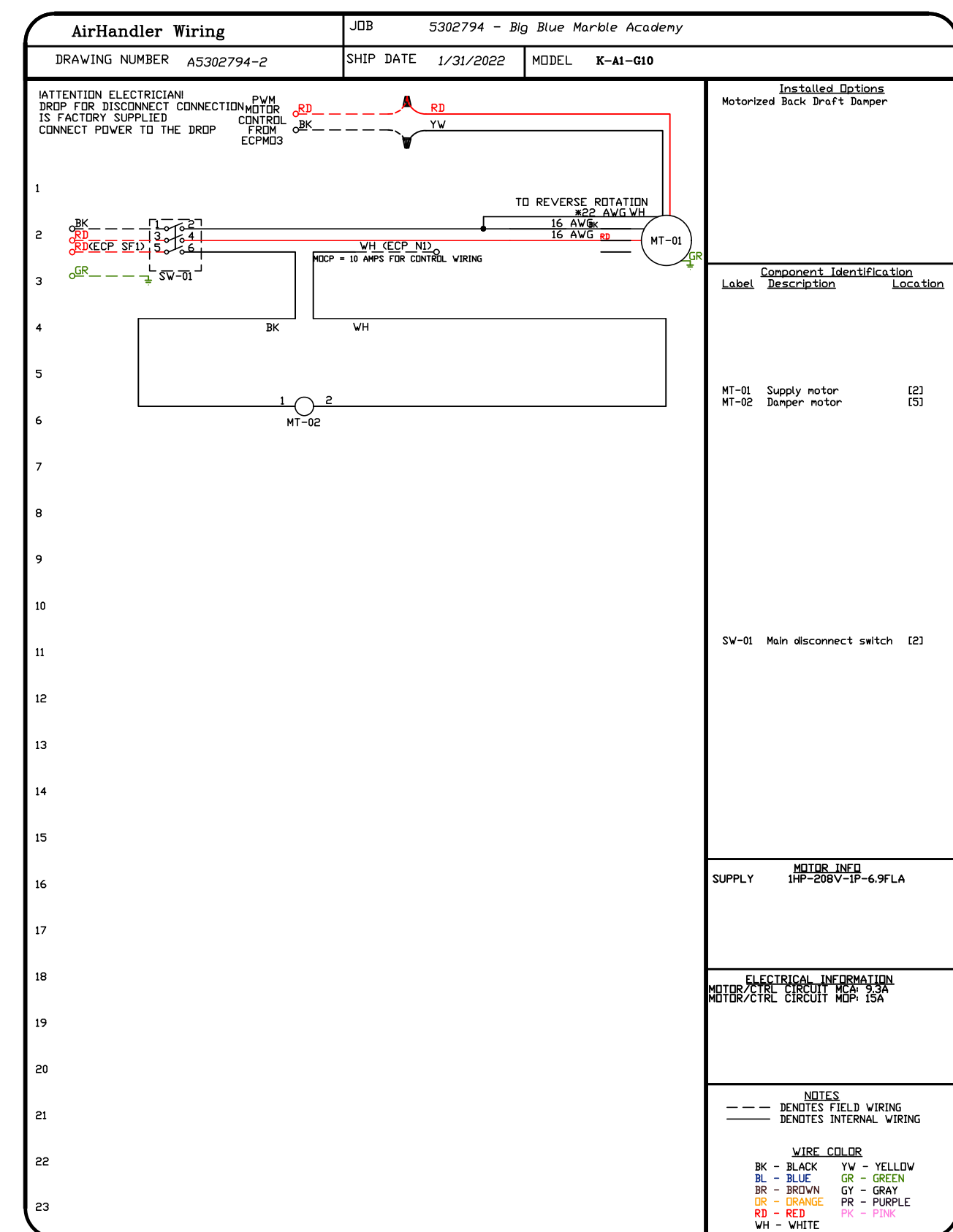
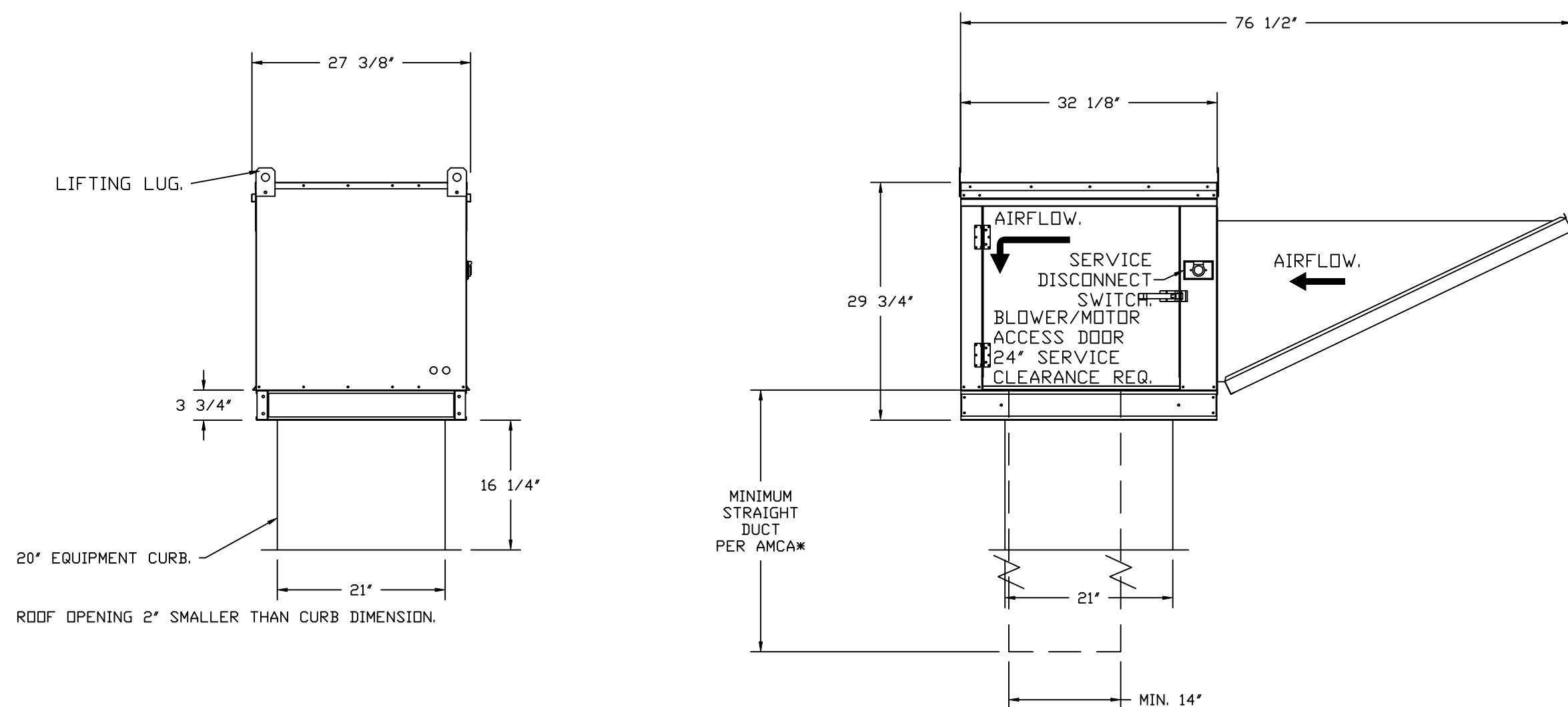
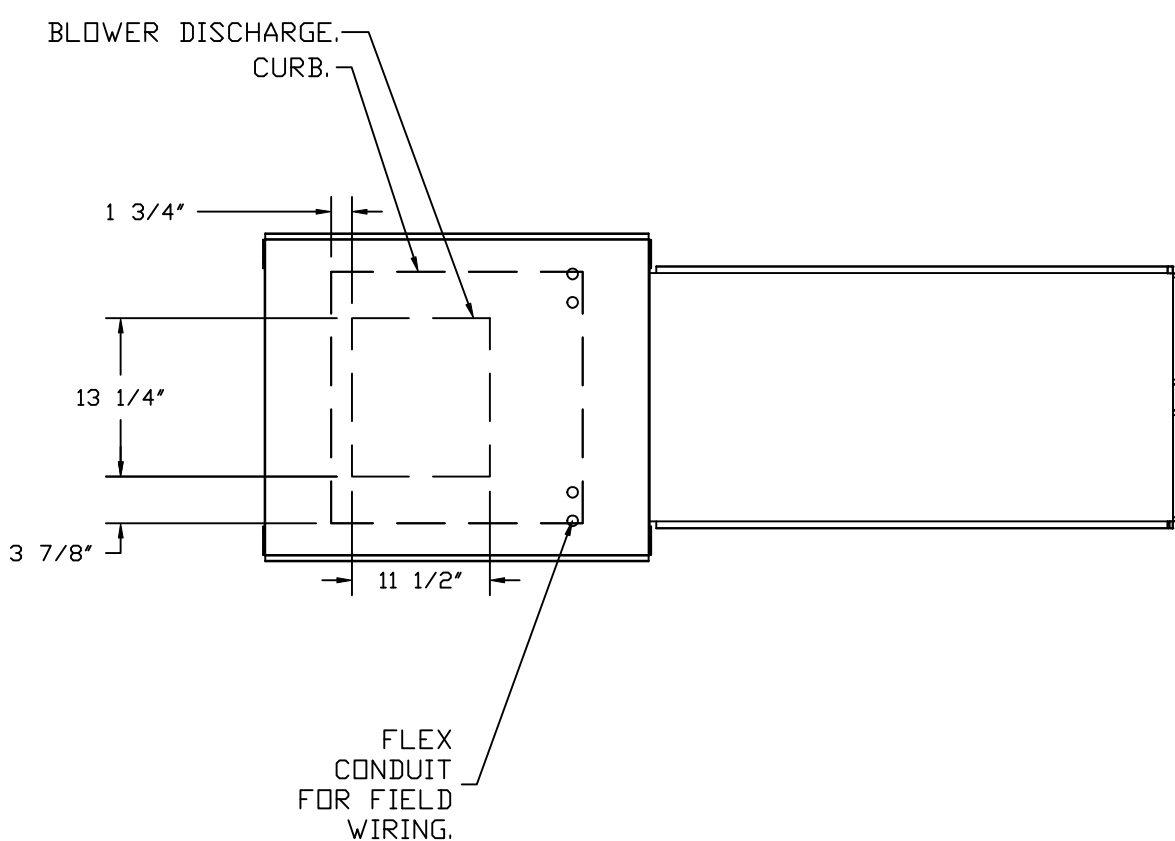
NOT FOR CONSTRUCTION



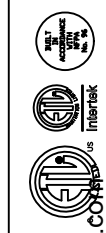
ATTACHMENT 4

FAN #2 K-A1-G10D - SUPPLY FAN (KSF)
 1. DIRECT DRIVE UNTEMPERED SUPPLY UNIT WITH 10" BLOWER IN SIZE #1 HOUSING WITH SPEED CONTROL, DISCONNECT SWITCH.
 2. INTAKE HOOD WITH EZ FILTERS.
 3. DOWN DISCHARGE - AIR FLOW RIGHT -> LEFT.
 4. MOTORIZED BACK DRAFT DAMPER 16" X 18" FOR SIZE 1 UNTEMPERED UNITS W/EXTENDED SHAFT, STANDARD GALVANIZED CONSTRUCTION, 3" REAR FLANGE, LOW LEAKAGE, TFB205 ACTUATOR INCLUDED.
 5. WIRING PACKAGE FOR SUPPLY MOTORS WITH PWM SIGNAL FROM ECM20 PREWIRE.
 6. HINGED DOUBLE WALL INSULATED DOOR ASSEMBLY (BURNER/BLOWER SECTION)
 7. 2 YEAR PARTS WARRANTY

INNOTE: SUPPLY DUCT MUST BE INSTALLED TO MEET SMACNA STANDARDS. A MINIMUM STRAIGHT DUCT LENGTH MUST BE MAINTAINED. DOWNSTREAM OF UNIT DISCHARGE AS OUTLINED IN AMCA PUBLICATION 201. WHEN USING RECTANGULAR DUCTWORK, ELBOWS MUST BE RADIUS THROAT, RADIUS BACK WITH TURNING VANES. FLEXIBLE DUCTWORK AND SQUARE THROAT/SQUARE BACK ELBOWS SHOULD NOT BE USED. ANY TRANSITION AND/OR TURNS IN THE DUCTWORK WILL CAUSE SYSTEM EFFECT. SYSTEM EFFECT WILL DRASTICALLY INCREASE SYSTEM PRESSURE AND REDUCE AIRFLOW. DO NOT RELY ON UNIT TO SUPPORT DUCT IN ANY WAY. FAILURE TO MAINTAIN PROPER DUCTWORK MAY CAUSE SYSTEM EFFECTS AND REDUCE PERFORMANCE OF THE EQUIPMENT. SUGGESTED STRAIGHT DUCT SIZE IS 14" x 14".



REVISIONS		
	DESCRIPTION	DATE:
△		
△		
△		
△		



Michigan Office
www.mucklerktch.com

Michigan Office

3876 East Paris Ave SE, Suite 18, Grand Rapids, MI, 49512 PHONE: (616) 942-9881 FAX: (919) 227-5984 EMAIL:

Big Blue Marble Academy
Lexington, SC, 29071

DATE: 1/31/2022

DWG.#:
5302794

DRAWN BY: RJF

SCALE:
3/4" = 1'-0"

MASTER DRAWING

SHEET NO.

6

ATTACHMENT 4

Unit Report For HP-2

Project: CTR - Big Blue Marble
Prepared By: Jason Koroniotis

01/26/2022



Outdoor Unit Parameters

Unit Model:.....25HCE
Unit Size:.....3 Tons (Size 36)
Voltage:.....208/230-3-60 V-Ph-Hz

Indoor Coil Parameters

Unit Model:.....FV4C
Unit Size:.....Size 006 (30 - 60,000 Btuh)
Cabinet Insulation:Modular with 1-in. super thick insulation
Voltage:.....208-1-60 V-Ph-Hz
Refrigerant Type:.....Puron
Heating Size:.....No Heat

Outdoor Unit Dimensions and Weight

Unit Length:.....31.1875 in
Unit Width:.....31.1875 in
Unit Height:.....28.6875 in
Unit Shipping Weight:.....201. lb

Indoor Coil Dimensions and Weight

Unit Length:.....22.0625 in
Unit Width:.....24.6875 in
Unit Height:.....59.1875 in
Unit Shipping Weight:.....207. lb

RESIDENTIAL APPLICATIONS

This warranty is to the original purchasing owner and subsequent owners only to the extent and as stated in the Warranty Conditions and below. The limited warranty period in years, depending on the part and the claimant, is as shown in the table below.

Limited Warranty (Years)		
Item	Original Owner	Subsequent Owner
Parts	10* (or 5)	5
Compressor	10* (or 5)	5

*If properly registered within 90 days of original installation, otherwise 5 years (except in California and Quebec and other jurisdictions that prohibit warranty benefits conditioned on registration). See Warranty Conditions below.

OTHER APPLICATIONS

The warranty period is five (5) years on the compressor, and one (1) year on all other parts. The warranty is the original owner only and is not available for subsequent owners.

Ordering Information

Part Number	Description	Quantity
Outdoor Unit		
25HCE436AP05	Comfort Series Heat Pump with Puron 3 Tons Cooling	1
	14 SEER @ ARI Conditions	
	Std Offering (NO High Press Switch)	
Indoor Coil		
FV4CNB006L00	FV4C Performance Series Fan Coil with Puron 6 Tons Cooling	1
	208/230-1-60	
	Modular with 1-in. super thick insulation	
	Aluminum	
Accessories		
KFCEH2601C10	10 kW Electric Heater with Circuit Breaker for Indoor Unit	