

TOWN COUNCIL



STAFF REPORT

Projects and Watershed Resilience Department

MEETING DATE:	June 9, 2026
SUBJECT:	Projects and Watershed Resilience Department Monthly Report
PROJECT MANAGER:	Kimberly Washok-Jones, Department Director

CAPITAL IMPROVEMENTS PROGRAM (CIP) UPDATE

Administrative Update

- Finalized budgets for FY27 Operating expenses and CIP project data sheets.

FACILITIES

1. Law Enforcement Center Facility Improvements

- PS emergency procurement of HVAC underway.

2. Sarah Riley Hooks Cottage

- Interior trim, utility connections and mechanical hook ups are underway.
- Executed contract for site and landscape construction with Nix Construction.
- Site construction began May 2026.

- **Next Steps:**

- Continue cottage reconstruction through FY26. Site construction to be completed in the Fall 2026.

3. New Riverside Barn Park – Public Services Building

- Architectural Plans, Site Development Plans and easements are **complete**.

- **Next Steps:**

- Complete structural design and permitting in FY26.
- Prepare bid solicitations in Summer 2026 for building and site development construction in FY27.

4. New Riverside Barn Park – Event Lawn Pavilion

- **Complete.**

5. Public Services Expansion and New Watershed Facility

- Obtained wetland surveys to evaluate developable land for expansion.

- **Next Steps:**

- Special PM to determine site capacity of upland property for future PS expansion.

HOUSING

1. Town of Bluffton Affordable Housing Projects– The May & 115 Bluffton Rd.

- WorkForce State of Mind partnership to construct 12 units at 1095 May River Rd. (The May) to be completed in 2027.

- **Next Steps:**

- Staff reviews applications for payment.
- Solicitation closes 6/11/26 for next Workforce Housing project at 115 Bluffton Road.

PARKS

1. Park Improvements

- Landscape modifications at Wright Family Park are **complete**.
- Complete installation of site furnishings in FY26.

2. Oyster Factory Park

- Pavilion repairs **complete**.
- Bids received for restroom expansion.
- **Next Steps:**
 - Award contract for restroom construction.

3. Oscar Frazier Park

- Begin construction of a second pavilion in June 2026.

4. New Riverside Barn Park – Phase 2 Trails & Disc Golf

- Obtained bids for disc golf features in May.
- **Next Steps:**
 - Post solicitation for Phase 2 trails in Summer 2026 with construction in Fall 2026.
 - Award construction contract for disc golf features, e.g. pads, baskets, steps, retaining walls, etc.

5. New River Linear Trail

- BPD enforcing no trespassing until construction is completed in Fall 2026.
- Construction of all three bridges, Four Seasons boardwalk connection, and pier are **complete**.
- **Next Steps:**
 - Construction of 10' paved pathway ongoing.

6. Buckwalter Place Park Improvements

- Hilton Head Landscape has begun construction of Phase 2 and 3 site improvements.
- Retaining wall **complete**.
- Trellis swing, misting station, and pathways ongoing.
- **Next Steps:**
 - Concrete pour at pavilions.

STORMWATER & SEWER

1. Historic District Sewer Extension Phases 4 through 6 – Lawrence, Green and Water Streets

- Main line sewer construction and as-builts for HD Sewer are **complete**.
- **Next Steps:**
 - BJWSA approved testing of main line system. Awaiting permit to operate from DES.
 - Begin service connections and pump stations construction.

2. Comprehensive Drainage Plan Improvements

- Draft Engineering Report for Crooked Cove **completed** and comments provided. Field meeting was held to discuss recommended projects and alternatives.
- Additional flow data is needed to calibrate H/H 2D model for Crooked and Guerrard Coves and is in process.
- **Next Steps:**
 - Guerrard Cove Engineering Report submittal.
 - Rose Dhu Creek RFQu posted.
 - SCEMD HMGP Grant Application for Huger/Verdier Cove Watershed Study pending.

3. May River Watershed Action Plan Impervious Restoration Water Quality Projects

- Preliminary Design of 9 participating sites **complete**.
- 15 additional sites' concept plans **completed**.
- Internal discussions and review of Impervious Restoration Program policy document held and comments being prepared for Final Draft development.

- **Next Steps:**

- Finalize Impervious Restoration Program Policy Document.
- Collaborate with Director of Procurement for BCSD and private owners' agreement to construct impervious restoration projects at school sites.

4. **Stoney Creek/Palmetto Bluff Sewer Partnership**

- BJWSA is the Project Manager as RIA-SCIIP grant recipient; updates can be found [here](#).

ROADS

1. **Pathway Pedestrian Safety Improvements**

- ***Completed*** Historic District for ADA compliance and May River Road RRFB crossings.
- **Next Steps:**
 - Bluffton Road, New Riverside Road, and phase 3 additional design of 30 locations continues. Working with SROs and school officials for crossings near schools.

2. **Bridge Street Streetscape**

- Public information meeting held 4/23/26.
- **Next Steps:**
 - Construction and email communication to stakeholders ongoing.

3. **Calhoun Street Streetscape**

- Preliminary engineering design is 80% complete and plans submitted to agencies for review and approval.
- **Next Steps:**
 - Continue easement negotiations with May River Road property owners for main transmission line for underground power.
 - Continue to coordinate underground power layout and modifications with Dominion Energy and CDDC Design.
 - Prepare easement acquisition plats for phase 1 in FY26 and begin easement acquisition.
 - Phased construction planned to begin in FY28 pending budget approval and acquisition of all required easements.

4. **Boundary Street Streetscape**

- Engineering design is 90% complete and submitted to agencies for review.
- Submitted SCDES permit amendment moving Lawrence St. drainage outfall to Green St.
- **Next Steps:**
 - Prepare easement exhibits, appraisals and continue easement negotiations.
 - Construction to be bid FY27, subject to acquisition of easements and permits.

5. **Ghost Roads – No further action is necessary.**

- TC and legal's determination is the Town owns all Ghost Roads.

6. **Pritchard Street Drainage Improvements**

- Design submittal for relocation of sidewalk north of MC Riley Early Childhood Learning Center to reduce tree removals **completed** and pending Proposal from Contractor.
- **Next Steps:**
 - All easements for construction have been acquired or agreed upon.
 - Submit final 319 grant report upon project completion.

THIS SPACE LEFT INTENTIONALLY BLANK.

WATERSHED MANAGEMENT UPDATE

Administrative Update

- Finalized budgets for FY27 Operating/CIP expenses.
- 1. SC Department of Environmental Services May River Shellfish Harvesting Monitoring Data Year-to-Date and May River Shellfish Harvesting Status Exhibit – *Attachments 1 and 1a***
 - 2. May River Watershed Action Plan Implementation Summary – *Attachment 2, 2a, 2b, and 3***
 - The next May River Watershed Action Plan Advisory Committee (WAPAC) meeting is 7/23/26.
 - Lewis and Quast met with Biohabitats to discuss Microbial Source Tracking (MST) Program.
 - Lewis and Quast met with McCormick Taylor, Inc. to discuss deliverables to implement the May River Watershed Action Plan Update and Model Report.
 - SCDES collected shellfish harvesting samples in May. Results pending.
 - MST Sampling Program targets potential human, dog, deer, horse, and bird fecal sources.
 - Collect five (5) wet and dry weather events for each subwatershed.
 - All dry sampling events for the coves have been completed. Additional samples will only be collected during qualifying wet weather conditions.
 - No targeted MST samples collected during this reporting period.
 - 3. Resilience**
 - Resilience Plan: Council approved contract with RK&K in May. Contract finalization and project kickoff meeting scheduled.
 - Furman University's students' heat action plan report submitted to the Town.
 - Wetland Restoration Study Request for Qualifications posted and closed 6/8/26.
 - Wetlands and Resiliency Ordinances:
 - Moreno met with the City of Conway, Coastal Conservation League, and Conservation Voters of South Carolina to discuss the wetland ordinance.
 - McCormick Taylor and Center for Watershed Protection continue wetland and resilience work. Deliverables under review.
 - Proposed revisions to the Wetland Ordinance: Council first reading in June.
 - Reviews continue for Wetland Mapping Tool and accompanying memorandum with minor revisions expected.

Municipal Separate Storm Sewer System (MS4) Program Update

- 1. MS4 Minimum Control Measure (MCM) - #1 Public Education and Outreach and MCM – #2 Public Participation and Involvement**
 - Lewis and Quast presented at the SC Sea Grant Biennial Research Symposium on the Town's Microbial Source Tracking (MST) Program and Moreno is presenting on the Town's SoLoCo Stormwater Design Manual on 6/11/26.
 - Lewis and Quast presented to Rotary regarding the Town's Water Quality Program.
- 2. MS4 MCM – #3 Illicit Discharge Detection and Elimination**
 - E. coli Concentrations Trend Map – *Attachment 4a*
 - Monthly Microbial Source Tracking (MST) Map – *Attachment 4b*
 - Illicit Discharge Investigations – *Attachment 4c*
- 3. MS4 MCM – #4 Construction Site Stormwater Runoff Control – *Attachment 5***
- 4. MS4 MCM – #5 Stormwater Plan Review and Related Activity – *Attachment 6***
- 5. MS4 MCM – #6 Good Housekeeping (Staff Training/Education)**
 - Lewis attended the Southeast Sustainability Director's Network meeting.
- 6. MS4 MCM – #6 Good Housekeeping (Ditch, Drainage and Roadside Maintenance)**

- New Riverside 319 Pond Restoration – project complete.
- Public Services performed weekly street sweeping on Calhoun St., Highway 46, Bruin Rd., May River Rd., Pin Oak St., and curbs/medians on Simmonsville and Buck Island Rds.
- Performed ditch inspections.
 - Buckwalter ditch (917 LF)
 - Arrow ditch (2,569 LF)
 - Red Cedar ditch (966 LF)
 - Buck Island roadside ditch (15,926 LF)
 - Simmonsville roadside ditch (13,792 LF)
- Ongoing roadside mowing, litter clean-up and maintenance of Masters' Way, McCracken Circle, Hampton Parkway, Buck Island and Simmonsville Rds., Goethe Rd., Shults Rd., Jason and Able Sts., Whispering Pine Rd., May River Rd., and Eagles Field.

7. Citizen Request for Watershed Management Services & Activities – Attachment 7

Attachments

1. SCDES Shellfish Harvesting Monitoring Data Year-to-Date
 - a. SCDES May River Shellfish Harvesting Status Exhibit
2. May River Watershed Action Plan Implementation Summary
 - a. Cumulative Microbial Source Tracking (MST) Results for Targeted Sampling
 - b. Targeted MST Sampling Sites Map
3. May River Watershed Action Plan Advisory Committee – 2026 WAPAC Meeting Schedule
4. MS4 Minimum Control Measure #3 – Illicit Discharge Detection and Elimination
 - a. *E. coli* Concentrations Trend Map
 - b. Monthly Microbial Source Tracking Trend Map – All Sources
 - c. Illicit Discharge Investigations
5. MS4 Minimum Control Measure #4 – Construction Site Stormwater Runoff Control
6. MS4 Minimum Control Measure #5 – Stormwater Plan Review and Related Activity
7. Citizen Request for Watershed Management Services and Activities Map
8. CIP Master Project Schedules

	19-19				19-19A				19-19B				19-19C				19-24				19-16			
	2023	2024	2025	2026	2023	2024	2025	2026	2023	2024	2025	2026	2023	2024	2025	2026	2023	2024	2025	2026	2023	2024	2025	2026
	Fecal Coliform (MPN)	Fecal Coliform (MPN)	Fecal Coliform (MPN)	Fecal Coliform (MPN)	Fecal Coliform (MPN)	Fecal Coliform (MPN)	Fecal Coliform (MPN)	Fecal Coliform (MPN)	Fecal Coliform (MPN)	Fecal Coliform (MPN)	Fecal Coliform (MPN)	Fecal Coliform (MPN)	Fecal Coliform (MPN)	Fecal Coliform (MPN)	Fecal Coliform (MPN)	Fecal Coliform (MPN)	Fecal Coliform (MPN)	Fecal Coliform (MPN)	Fecal Coliform (MPN)	Fecal Coliform (MPN)	Fecal Coliform (MPN)	Fecal Coliform (MPN)	Fecal Coliform (MPN)	Fecal Coliform (MPN)
December	33.0	NS	70.0		33.0	NS	17.0		7.8	NS	2.0		13.0	NS	6.1		7.8	NS	6.8		17.0	NS	2.0	
November	13.0	170.0	13.0		2.0	130.0	23.0		4.5	170.0	4.0		4.5	49.0	4.5		2.0	79.0	46.0		4.5	33.0	4.5	
October	33.0	49.0	70.0		23.0	17.0	170.0		17.0	13.0	70.0		33.0	2.0	70.0		2.0	11.0	79.0		6.8	17.0	13.0	
September	23.0	33.0	31.0		13.0	240.0	49.0		13.0	13.0	7.8		7.8	7.8	14.0		17.0	22.0	33.0		13.0	130.0	2.0	
August	23.0	33.0	220.0		49.0	23.0	49.0		6.8	23.0	79.0		13.0	49.0	79.0		23.0	49.0	33.0		2.0	13.0	7.8	
July	350.0	31.0	70.0		920.0	31.0	79.0		70.0	32.0	350.0		49.0	32.0	130.0		33.0	33.0	21.0		17.0	32.0	11.0	
June	14.0	7.8	170.0		7.8	7.8	170.0		23.0	6.8	110.0		13.0	4.5	49.0		33.0	2.0	23.0		13.0	2.0	6.8	
May	23.0	27.0	33.0		33.0	22.0	170.0		17.0	23.0	79.0		13.0	17.0	21.0		33.0	7.8	49.0		21.0	4.0	4.5	
April	170.0	49.0	NS	2.0	130.0	17.0	NS	17.0	110.0	17.0	NS	7.8	70.0	4.0	NS	7.8	NS	11.0	NS	11.0	7.8	23.0	NS	2.0
March	23.0	49.0	240.0	49.0	49.0	31.0	46.0	70.0	17.0	11.0	23.0	33.0	17.0	4.5	7.8	17.0	17.0	22.0	13.0	6.8	17.0	4.5	4.0	13.0
February	540.0	49.0	33.0	7.8	350.0	49.0	49.0	2.0	240.0	11.0	79.0	6.8	240.0	22.0	79.0	2.0	33.0	7.8	13.0	1.8	33.0	11.0	17.0	2.0
January	33.0	49.0	NS	23.0	33.0	23.0	NS	4.5	13.0	4.5	NS	4.5	33.0	4.5	NS	7.8	7.8	7.8	NS	1.8	4.5	2.0	NS	2.0
** Truncated GeoMetric Mean	38.0	39.0	47.0	39.0	30.0	30.0	41.0	34.0	17.0	16.0	22.0	20.0	16.0	14.0	18.0	14.0	9.0	10.0	17.0	14.0	8.0	10.0	8.0	7.0
** Truncated 90th Percentile	211.0	187.0	168.0	153.0	152.0	163.0	193.0	146.0	77.0	79.0	111.0	104.0	71.0	74.0	79.0	65.0	44.0	47.0	58.0	57.0	26.0	38.0	31.0	28.0

NS = No Sample

SCDES Regulatory Requirements:

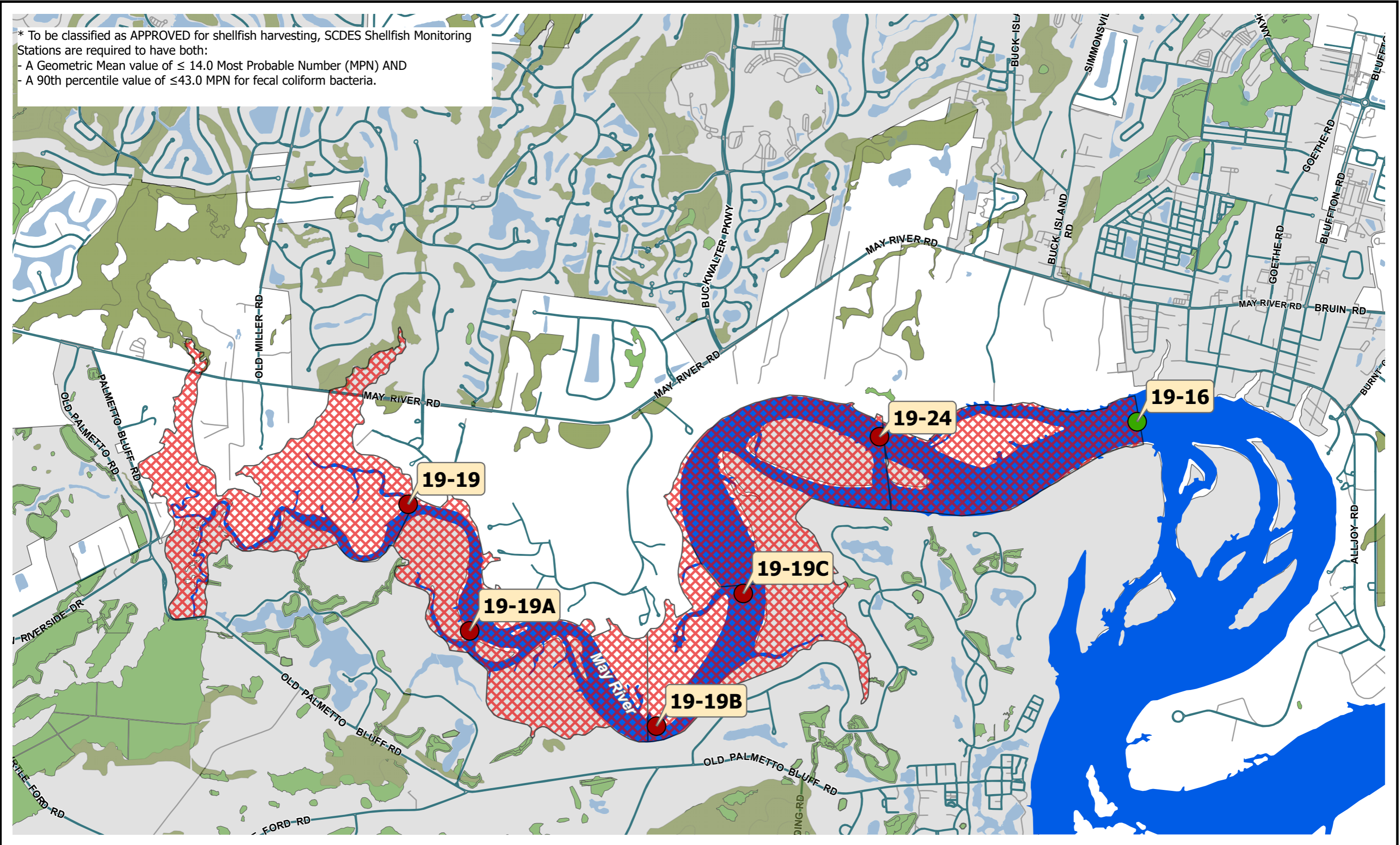
- Geometric Mean ≤ 14
- 90th Percentile ≤ 43









** Town staff calculations utilizing SCDES statistics

Note:

- December 2025 ends the data collection period for 2026 shellfish harvesting season.
- December 2026 ends the data collection period for 2027 shellfish harvesting season.
- 2025 fecal coliform data is part of the 2026 classification data collection period.
- 2026 fecal coliform data is part of the 2027 classification data collection period.

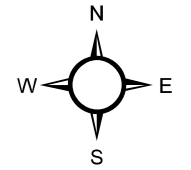
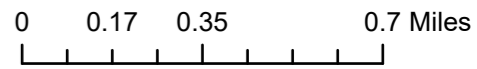
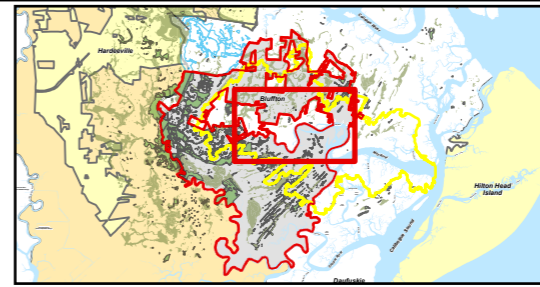
* To be classified as APPROVED for shellfish harvesting, SCDES Shellfish Monitoring Stations are required to have both:
 - A Geometric Mean value of ≤ 14.0 Most Probable Number (MPN) AND
 - A 90th percentile value of ≤ 43.0 MPN for fecal coliform bacteria.



-  Town Bluffton Jurisdiction
-  Beaufort County Jurisdiction
-  Restricted 2025/2026 Shellfish Season
-  Streets
-  Water
-  Wetlands
-  Open Shellfish Monitoring Station
-  Closed Shellfish Monitoring Station

SCDES SHELLFISH HARVESTING STATUS Town of Bluffton

Beaufort County, SC
Date: 9/17/2025 9:28 AM



May River Watershed Action Plan Update & Modeling Report (MRWAP) Implementation Summary

1. MRWAP Background

- *May River Watershed Action Plan Update & Modeling Report (MRWAP)* was completed November 2020.
- Town Council adopted the MRWAP as a supporting document to the Comprehensive Plan in February 2021.
- The Action Plan Update & Modeling Report included the development of watershed-water quality models (WQ Model) for the four (4) May River Headwaters subwatersheds (Stoney Creek, Rose Dhu Creek, Duck Pond, and Palmetto Bluff) where the shellfish impairments are located.
- The purpose of the modeling effort was to better understand fecal coliform (FC) fate and transport in the Headwaters subwatersheds to develop strategies ultimately intended to open all shellfish stations to harvesting. To capture the variety of storm events and environmental conditions, the Project Team developed a continuous simulation of both water quantity and quality.
- The MRWAP included new water quality improvement projects resulting from the WQ Model. Additionally, the potential fecal bacteria reduction benefits of septic to sewer conversion in the four (4) Headwaters subwatersheds were modeled.

2. Septic to Sewer Project Recommendations/Evaluations

Background:

- The MRWAP evaluated four (4) septic to sewer conversion projects in the Rose Dhu Creek and Stoney Creek subwatersheds:
 - Cahill
 - Gascoigne
 - Stoney Creek
 - Pritchardville
- These projects overlap with 42 subcatchments in the Stoney Creek watershed and 11 in Rose Dhu Creek. Based on WQ Model outputs, these projects alone may potentially reduce FC loading by 3.46×10^{13} FC per year.
- The estimated septic to sewer conversion costs of these projects is \$5.5 million.

This space left intentionally blank

Update: Stoney Creek/Palmetto Bluff Sewer Partnership

- BJWSA is the Project Manager as the awardee of the RIA-SCIIP grant.
- **Next Steps:**
 - BJWSA updates can be found at: <https://bjwsa.org/251/Go2Sewer-for-a-Cleaner-Stoney-Creek>

3. MRWAP Impervious Restoration Water Quality Projects

Task 1: MRWAP Eleven (11) Proposed Projects Background

- Eleven (11) project sites (incorporating various individual BMPs) were selected in consultation with the Town (prioritizing subcatchments with FC bacteria hotspot and/or large impervious areas). These sites were evaluated in terms of the potential benefits gained by retrofitting to meet the 95th percentile storm retention, to the maximum extent possible, under the proposed Impervious Area Restoration/Stormwater Retrofit Program.
- Based on WQ Model outputs, these projects alone may potentially reduce FC loading by
 - 2.99×10^{14} FC reduction for the Full SWRv (entire sub-basin drainage area catchment).
 - 2.53×10^{14} FC reduction for the Reduced SWRv projects (impervious area drainage area of sub-basin catchment).
- The estimated Full SWRv projects costs is \$32.7 million and the estimated cost of Reduced SWRv projects is \$22.6 million.
- Currently the Towns' Impervious Restoration Program is targeting Reduced SWRv for future projects.

Task 1: MRWAP Eleven (11) Proposed Projects Update

- Eleven (11) proposed project sites Rose Dhu Creek (6 projects) and Stoney Creek (5 projects):
 - All geotechnical work, evaluations, site assessments, planning, engineering, and preliminary designs for the 8 original sites is **complete**.
 - Bluffton Early Learning Center (BELC).
 - Boys and Girls Club of Bluffton (BGC).
 - Benton House (BH).
 - Bluffton High School (BHS).
 - Buckwalter Recreation Center (BRC).
 - ~~Lowcountry Community Church (LCC)~~. **Declined to Participate.**
 - McCracken Middle School/Bluffton Elementary School (MMSBES).
 - May River High School.
 - ~~One Hampton Lake Apartments (OHLA)~~. **Declined to Participate.**
 - Pritchardville Elementary School (PES).

- ~~Palmetto Pointe Townes (PPT)~~. **Declined to Participate.**
- Next Steps:
 - Finalize Impervious Restoration Program (IRP) Policy Document.
 - Continue to collaborate with Director of Procurement for an agreement with BCSD and Private Owners to construct impervious restoration projects at school sites.

Task 2: Identify Fifteen (15) New Project Sites Background

- Identify 15 new project sites for Town of Bluffton Impervious Restoration/BMP Retrofit Projects.
- The Town wishes to identify an additional 15 project sites located within the municipal limits of Bluffton for the Impervious Restoration/BMP Retrofit Program. However, the criteria for site selection will be considered to be more “low hanging fruit” based on the following:
 - Within Town of Bluffton Municipal limits.
 - Soils – sandy soils with high infiltration rates offer the biggest bang for the buck for water quality treatment/improvement. Utilizing soil survey and other information target sites where infiltration can be maximized on-site.
 - Public or governmental agency land/property owner (not SCDOT RoW).

Task 2: Identify Fifteen (15) New Project Sites Update

- 15 project sites concept plan development completed.
- **Next Steps:**
 - Finalize Impervious Restoration Program Policy Document.
 - Collaborate with the Director of Procurement for the Beaufort County School District and private owners’ agreement to construct impervious restoration projects at school sites.

Task 3: MRWAP Impervious Restoration Policy Documents Background

- MRWAP Section 5.4.4. Stormwater BMP Retrofit Projects of the May River Watershed Action Plan Update and Model Report identifies potential Impervious Restoration/BMP Retrofit projects located on Public and Private Land. As mentioned earlier, one of the primary site selection criteria, at time of report development, was to identify sites with large impervious areas so that pollutant load reductions could be estimated and the benefits of such projects on stormwater quality quantified/estimated, if implemented into construction. Generally, Public Funds are not expended to improve private property nor is Town of Bluffton funding generally expended on Public Land owned by another government entity. In order for such projects identified in Section 5.4.4. to move forward in the interest of improved water quality and for the overall benefit and welfare of the

constituents of the Town of Bluffton, Policy Documents need to be formulated that establishes the parameters of such a Program to be initiated and implemented.

Task 3: MRWAP Impervious Restoration Policy Documents Update

- Impervious Restoration Program Policy Document Draft submitted and under review. Fee-in-Lieu Program Policy Document - Adopted into the FY26 Master Fee Schedule at the July 2025 Town Council Meeting.
- As Adopted:
 - As part of the SoLoCo Stormwater Design Manual, developers may submit for MEP when the proposed development site has constraints or limitations to which prevent SoLoCo Stormwater Design Manual requirements from being met, specifically stormwater retention volume (SWRv) requirements. SWRv is the volume of stormwater runoff that a stormwater management system can store and treat to improve water quality. The MEP submittal must provide documentable evidence of the process the applicant has performed that demonstrates the restrictions to the use and implementation of the Best Management Practices (BMPs) to meet the SWRv requirements.
 - When a development project cannot accommodate the required SWRv due to on-site constraints identified in the approved MEP analysis, the developer is required to pay a Fee-In-Lieu (FIL) to the Town of Bluffton for the shortfall according to the FIL fee schedule has been adopted as part of the Master Fee Schedule. Funds collected through FIL payments will then be used by the Town to fund other qualified uses that protect water quality within the same watershed as the original project including:
 - The construction and maintenance of impervious restoration program water quality BMPs;
 - Purchase of land for increased conservation areas, application of Better Site Design to the approved Master Plan, buffers, undisturbed open space, and natural resource of significance areas, and
 - Purchase of development rights.
 - FIL payment is based on and equal to a unit of SWRv in cubic feet or designating a conservation area/easement area that protects a qualified natural resource that would otherwise require the same SWRv treatment if developed. The monetary value for a unit of SWRv is based on the current and typical costs for land as well as associated costs for design, construction, construction management, Town program management, post-construction inspection, and ongoing maintenance of water quality BMPs. The SWRv FIL rate is found in the Town's Master Fee Schedule, under Section VII "Stormwater Management Fees," allowing for annual review and updates as needed based on the Consumer Price Index (CPI) or based on updated information regarding the cost of water quality BMP construction and

maintenance, changes in the construction industry, availability of supplies, etc. If the developer and/or private property owner take responsibility for maintaining the BMP or provide land, then the associated cost for a unit of SWRv could be lessened accordingly.

Item/Description	Fee
Fee-In-Lieu (FIL)	
For projects with an approved Maximum Extent Practicable (MEP) submittal, the FIL amount is calculated based on an applicant’s shortfall, in cubic feet (CF), of the required Stormwater Retention Volume (SWRv).	\$151.92/CF of SWRv

- ToB CIP Project Impervious Restoration Program & Incentives – Draft document in process.
- ToB SWRv Credit Trading Program - (under evaluation)

4. Other, Related MRWAP Recommendations

Background:

- The Town should incorporate volume reduction BMPs (those that encourage infiltration) within existing and future CIP projects to the maximum extent practical (MEP), especially for project locations with well-drained soils (HSG A or B).

Other, Related MRWAP Recommendations Update:

- Town is in progress of incorporating volume reduction BMPs within existing and future CIP projects to the MEP. Specific projects currently in progress include:
 - Bridge Street Streetscape Project
 - Water quality monitoring has been completed.
 - Pritchard Street Streetscape and Drainage Improvement Project
 - Incorporated Infiltration BMPs within the project to capture and treat 1.95” of rainfall over impervious surfaces within the project area, prior to discharge into Heyward Cove.
 - Awarded Section 319 Grant from SCDES to cost-share cost of construction of proposed water quality BMPs.
 - Construction and administration are on-going.

5. MRWAP Water Quality Program Recommendations Update

Background:

- Section 5.0 of the MRWAP included recommendations for the Town of Bluffton to improve upon their existing monitoring program (concentration and source typing) and flow.

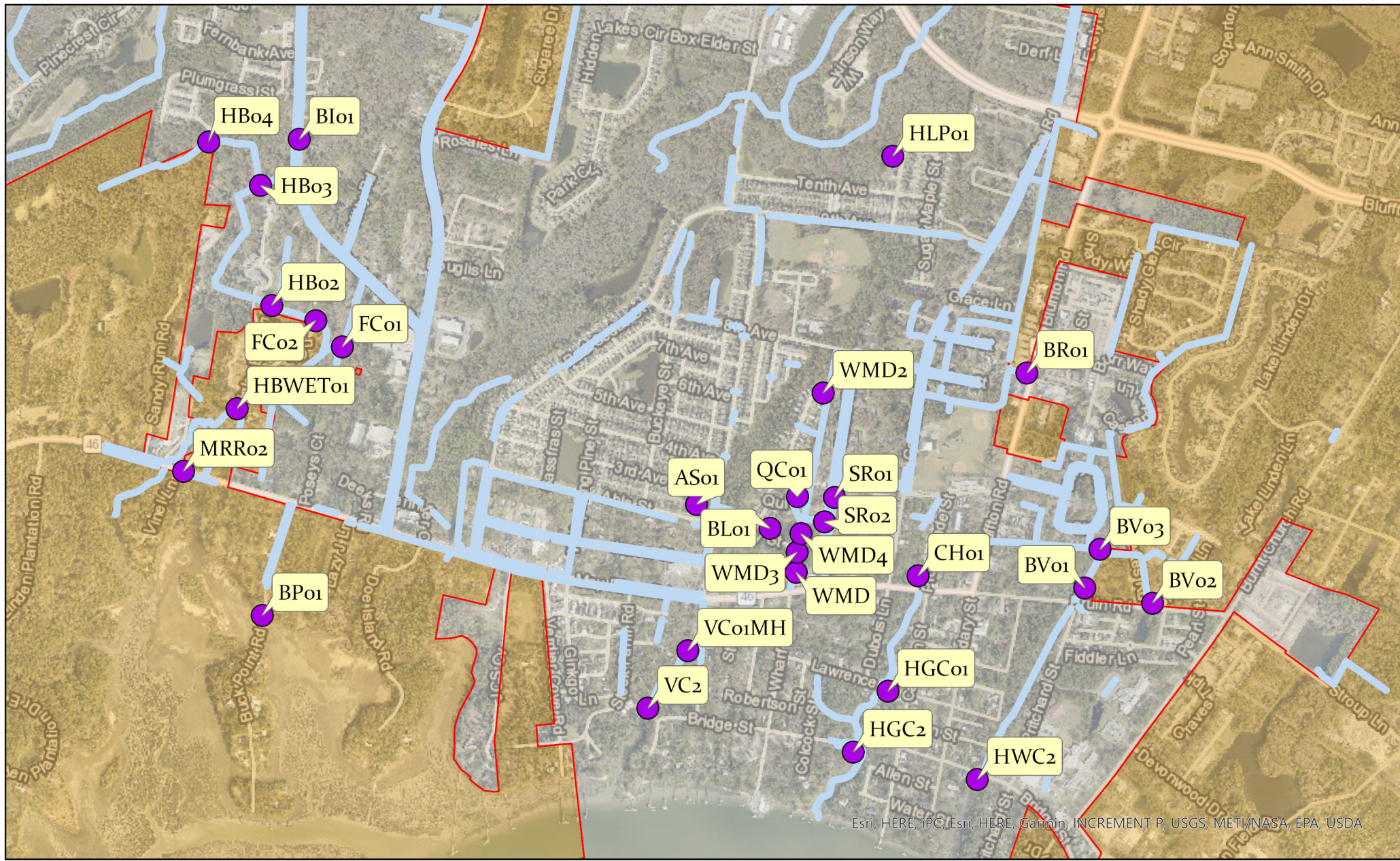
MRWAP Water Quality Program Recommendations Update:

- 5.1.1 In-House Microbial Source Tracking:
 - Staff have collaborated with Dr. Tye Pettay and the USCB Microbial Source Tracking (MST) Laboratory to develop new markers for tracking fecal contamination in the May River Watershed. The primary goal is to identify the sources of bacteria and establish effective mitigation plans. The human genetic marker remains the main focus of the Town's MST sampling program, as it poses the greatest risk to human health.
 - With the introduction of the new MST markers, Town staff have initiated a targeted MST sampling program, starting with the Crooked Cove subwatershed. The Town has now expanded this program into the Heyward, Huger, and Verdier Cove subwatersheds. The MST Program examines multiple potential sources of contamination, including human, dog, deer, horse, and bird waste. Staff are collecting samples during five (5) wet weather events and five (5) dry weather events to characterize each subwatershed.
 - All five (5) dry weather events have been completed for these subwatersheds, leaving only the wet weather events to be collected. Staff continue to focus on interpreting the MST results and developing new educational initiatives before transitioning the MST targeted sampling program to additional subwatersheds.
- 5.1.2 Future (New) Bacteria Monitoring Locations & 5.1.3 Future (New) Water Flow Monitoring Locations
 - Town staff have finalized all bacteria and flow monitoring data collection efforts recommended in sections 5.1.2 and 5.1.3 of the May River Watershed Action Plan Model Report. These efforts aim to improve/calibrate the Town's stormwater model with a comprehensive dataset.
 - **Previous MRWAP Update:**
 - Town staff working with the Director of Compliance and Contracts to finalize procurement services related to improving/calibrating the Town's stormwater model with all Water Quality Program data.
 - **Current 5.1.2 & 5.1.3 Update**
 - The contract for work associated with the calibration of the Town's May River Watershed Action Plan model has been executed. Work was awarded to McCormick Taylor, Inc.

- A 1D 2024 PCSWMM Water Quality Model for the May River headwaters (Rose Dhu Creek, Stoney Creek, Palmetto Bluff, and Duck Pond) has been created and delivered to the Town. In-person PCSWMM training was held with the consultant team.
- **Next Steps:**
 - Compare PCSWMM model outputs with the Town's 2018 and 2002 XPSWMM Water Quality Models.
 - Analyze proposed May River water quality improvement projects as designed to validate anticipated improvements.
 - This initiative is part of the WAPAC FY27-FY28 Strategic Plan. The Town's consultant team is expected to present to the WAPAC in the summer or fall of this calendar year.

			Summary of All Targeted Microbial Source Tracking Marker Results To-Date									
			Human		Dog		Bird		Deer		Horse	
Sub-basin	Sampling Location	Location Description	Human (Number Times Detected/ Number Times Analyzed)	Percent of the Time Human Detected at Sampling Location	Dog (Number Times Detected/ Number Times Analyzed)	Percent of the Time Dog Detected at Sampling Location	Bird (Number Times Detected/ Number Times Analyzed)	Percent of the Time Bird Detected at Sampling Location	Deer (Number Times Detected/ Number Times Analyzed)	Percent of the Time Deer Detected at Sampling Location	Horse (Number Times Detected/ Number Times Analyzed)	Percent of the Time Horse Detected at Sampling Location
SCDES May River Shellfish Stations	19-19	May River at First Dock in Headwaters past Bluff	5/81	6.17%	2/17	11.76%	7/17	41.18%	3/15	20.00%	0/12	0.00%
	19-19A	Unnamed Tributary near SW corner of Gascoigne Bluff	3/82	3.66%	5/18	27.78%	4/17	23.53%	3/13	23.08%	0/12	0.00%
	19-19B	Bend in May River nearest the high bluff of Palmetto Bluff	4/80	5.00%	6/14	42.86%	3/14	21.43%	1/15	6.67%	1/11	9.09%
	19-19C	First Unnamed Tributary leading from Gascoigne Bluff	4/82	5.26%	2/18	11.11%	8/21	38.10%	0/14	0.00%	0/14	0.00%
	19-24	May River at Southern End of Crane Island	1/82	1.22%	2/20	10.00%	1/2	50.00%	0/9	0.00%	0/9	0.00%
Crooked Cove	HB04	Wetland area behind The Gray's Apartments	2/5	40.00%	1/5	20.00%	0/5	0.00%	5/5	100.00%	0/5	0.00%
	BI01	Buck Island Road Ditch	0/10	0.00%	6/10	60.00%	0/10	0.00%	6/10	60.00%	0/10	0.00%
	HB03	Wetland area behind The Gray's Apartments	1/7	14.29%	3/7	42.86%	0/7	0.00%	4/7	57.14%	1/7	14.29%
	HB02	Entrance to The Gray's Apartments	3/9	33.33%	5/9	55.56%	0/9	0.00%	3/9	33.33%	0/9	0.00%
	FC02	Frierson's Circle	2/10	20.00%	6/10	60.00%	3/10	30.00%	4/10	40.00%	0/10	0.00%
	HBWET01	Wetland area at Vista View Apartments	3/10	30.00%	3/10	30.00%	1/10	10.00%	3/10	30.00%	0/10	0.00%
	MRR02	Drainage ditch next to Cahill's	1/10	10.00%	8/10	80.00%	0/10	0.00%	4/10	40.00%	0/10	0.00%
	FC01	Frierson's Circle	1/9	11.11%	1/9	11.11%	0/9	0.00%	1/9	11.11%	0/9	0.00%
	BP01	Buck Point Road	0/5	0.00%	4/5	80.00%	0/5	0.00%	1/5	20.00%	0/5	0.00%
Heyward Cove	BR01	Drainage ditch near Taylor's Warehouses on Bluffton Rd	2/9	22.22%	4/9	44.44%	0/9	0.00%	0/9	0.00%	0/9	0.00%
	BV01	Drainage ditch at the intersection of Bruin Rd and Pritchard St	1/9	11.11%	5/9	55.56%	0/9	0.00%	1/9	11.11%	0/9	0.00%
	BV02	Drainage ditch at intersection of Hawkes Rd and Pritchard St	1/9	11.11%	2/9	22.22%	0/9	0.00%	0/9	0.00%	0/9	0.00%
	BV03	Drainage ditch at the end of Hawkes Rd	0/9	0.00%	5/9	55.56%	0/9	0.00%	1/9	11.11%	0/9	0.00%
	HWC2	Heyward Cove overpass on Bridge St	4/6	66.67%	6/6	100.00%	1/6	16.67%	1/6	16.67%	0/6	0.00%
Huger Cove	HGC01	Drainage ditch on Lawrence St	4/9	44.44%	6/9	66.67%	1/9	11.11%	0/9	0.00%	0/9	0.00%
	CH01	Ditch that connects behind the promenade to May River Rd	0/1	0.00%	0/1	0.00%	0/1	0.00%	0/1	0.00%	0/1	0.00%
	HGC2	Huger Cove overpass on Bridge St	3/6	50.00%	5/6	83.33%	0/6	0.00%	0/6	0.00%	0/6	0.00%

Verdier Cove	HLP01	Pond on Honey Locust Ave	0/7	0.00%	2/7	28.57%	0/7	0.00%	0/7	0.00%	0/7	0.00%
	SR01	Drainage ditch off Shultz Rd	0/4	0.00%	1/4	25.00%	0/4	0.00%	0/4	0.00%	0/4	0.00%
	SR02	Drainage ditch that leads from Shultz Rd to the ditch behind the Watershed Management Division	0/1	0.00%	0/1	0.00%	0/1	0.00%	0/1	0.00%	0/1	0.00%
	AS01	Pond at corner of Able St and Pin Oak St	0/7	0.00%	1/7	14.29%	0/7	0.00%	1/7	14.29%	0/7	0.00%
	WMD	Drainage ditch adjacent to Watershed building	5/6	83.33%	1/6	16.67%	3/6	50.00%	1/6	16.67%	0/6	0.00%
	WMD2	Beginning of drainage ditch running behind the Watershed building	0/3	0.00%	1/3	33.33%	0/3	0.00%	2/3	66.67%	0/3	0.00%
	WMD3	Middle of drainage ditch running behind the watershed building	2/2	100.00%	0/2	0.00%	1/2	50.00%	1/2	50.00%	0/2	0.00%
	WMD4	Middle of drainage ditch running behind the watershed building	0/1	0.00%	0/1	0.00%	0/1	0.00%	0/1	0.00%	0/1	0.00%
	VC01MH	Verdier Cove outfall on Thomas Heyward St	0/7	0.00%	2/7	28.57%	0/7	0.00%	1/7	14.29%	0/7	0.00%
	VC2	Kayak dock in Stock Farm	0/3	0.00%	1/3	33.33%	0/3	0.00%	0/3	0.00%	0/3	0.00%
	BL01	Manhole in front of 12 and 14 Brenden Ln	0/2	0.00%	0/2	0.00%	0/2	0.00%	0/2	0.00%	0/2	0.00%
	QC01	Manhole in front of 6 and 8 Quinn St	0/2	0.00%	0/2	0.00%	0/2	0.00%	0/2	0.00%	0/2	0.00%



Town of Bluffton

Targeted MST Sampling Locations

Legend

- | | |
|-----------------------------------|---------------------|
| Targeted MST Sampling Locations | — Drainage Channels |
| ● Targeted MST Sampling Locations | Jurisdiction |
| | ■ BEAUFORT COUNTY |
| | ■ BLUFFTON |



TOWN OF BLUFFTON MAY RIVER WATERSHED ACTION PLAN ADVISORY COMMITTEE 2026 Meeting Schedule

MEETING DATES
January 22, 2026
March 9, 2026, 10am - 12:30pm
April 23, 2026
July 23, 2026
October 22, 2026

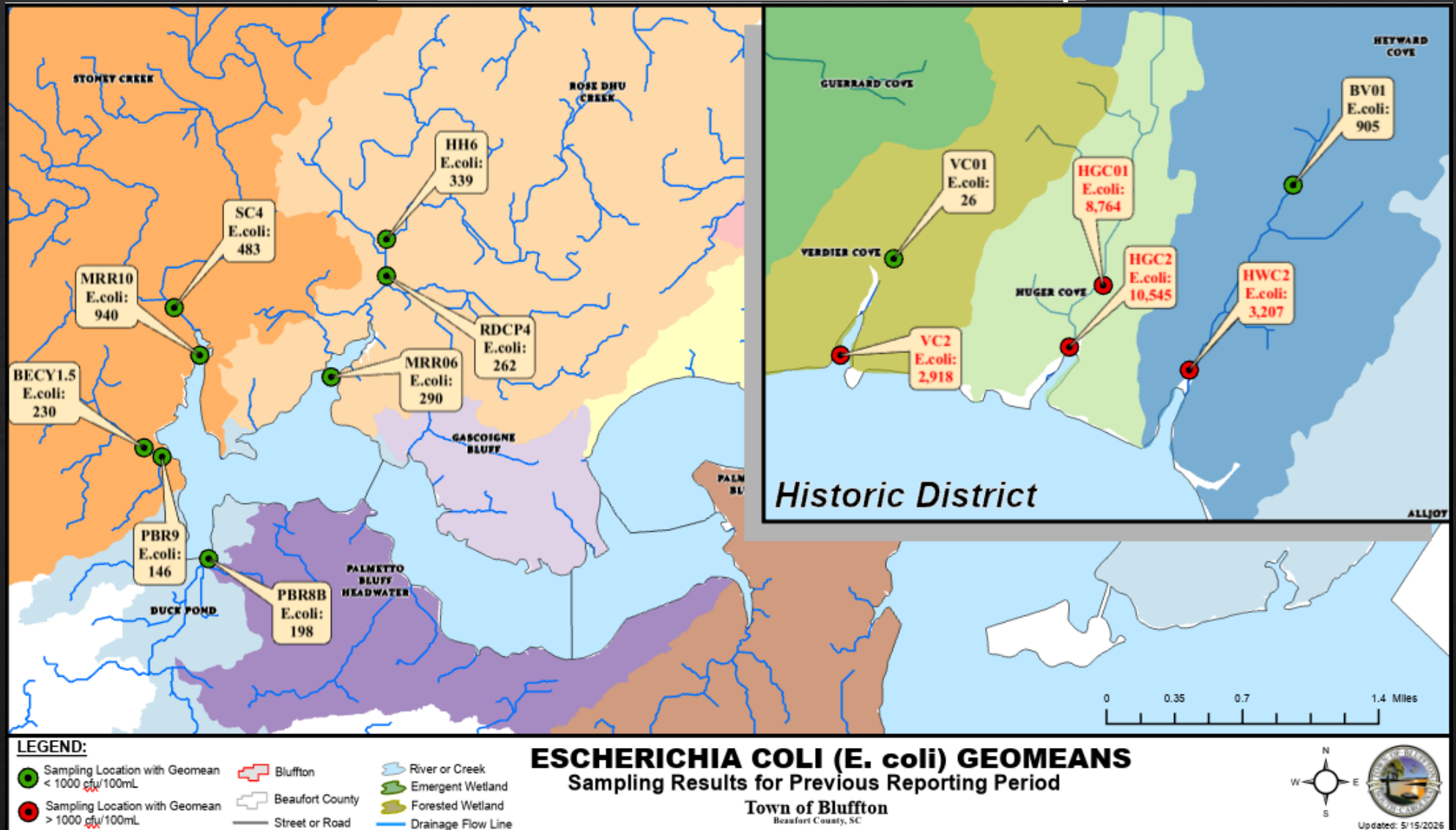
REGULAR MEETINGS ARE HELD THE 4th THURSDAY OF EACH MONTH AT 3:00 P.M.
EXCEPT MARCH

Please Note:

Meetings will be held on scheduled meeting dates unless otherwise advertised with FOIA compliance.

APPROVED

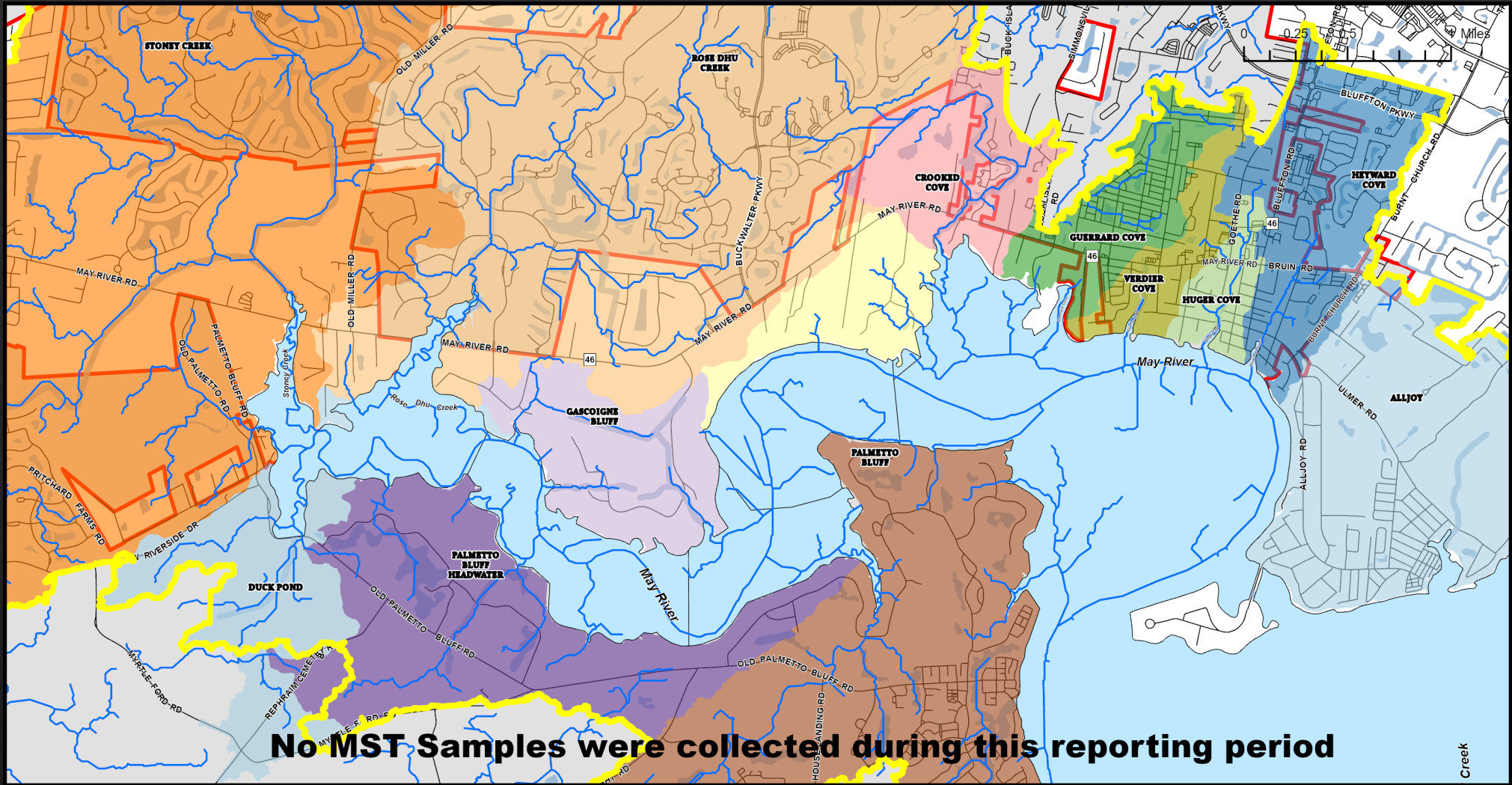
MS4 Minimum Control Measure #3 – IDDE: *E. coli* Concentrations Trend Map



	USCB Water Quality Samples	Microbial Source Tracking Samples	MS4 Quarterly Samples Collected
FY 2026 YTD Totals	1,392	218	84

Totals include only samples submitted for laboratory analysis, and not *in situ* parameters.

MS4 Minimum Control Measure #3 – IDDE: Microbial Source Tracking (MST) Map – By Markers Sources



No MST Samples were collected during this reporting period

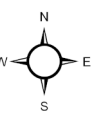
LEGEND:

Basins & Subbasins:	Bluffton	Location With MST Detection And Source Detected:
Alljoy	Beaufort County	Human
Rose Dhu Creek	May River Watershed	Bird
Stony Creek	River or Creek	Deer
Gascoigne Bluff	Drainage Flow Line	Dog
Palmetto Bluff Headwater	Street or Road	Horse
Palmetto Bluff		Location Without MST Detection
Duck Pond		
Heyward Cove		
Huger Cove		
Guerrard Cove		
Crooked Cove		
Verdier Cove		
Unnamed		

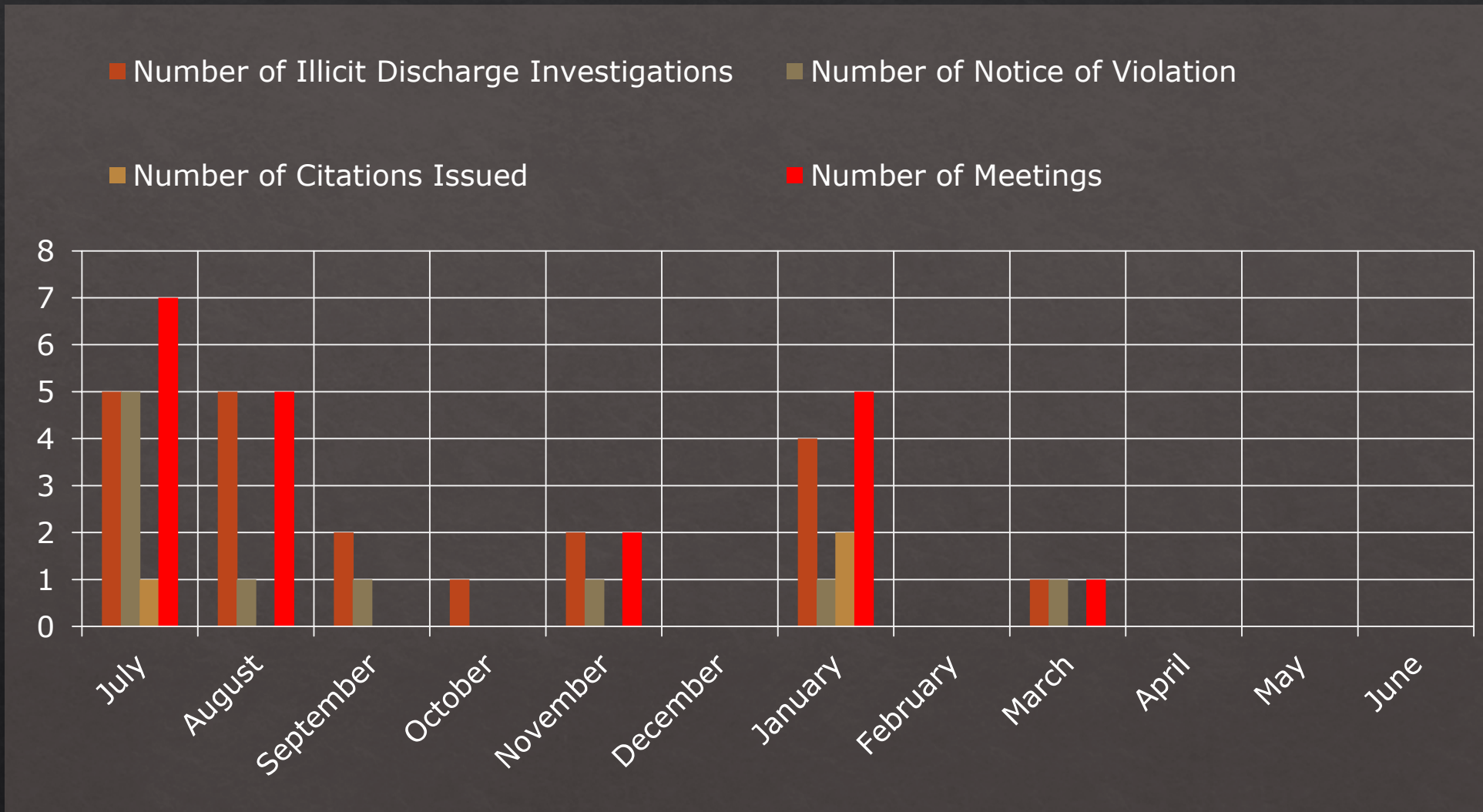
MICROBIAL SOURCE TRACKING (MST) Sampling Results for Previous Reporting Period

Town of Bluffton
Beaufort County, SC

Creek

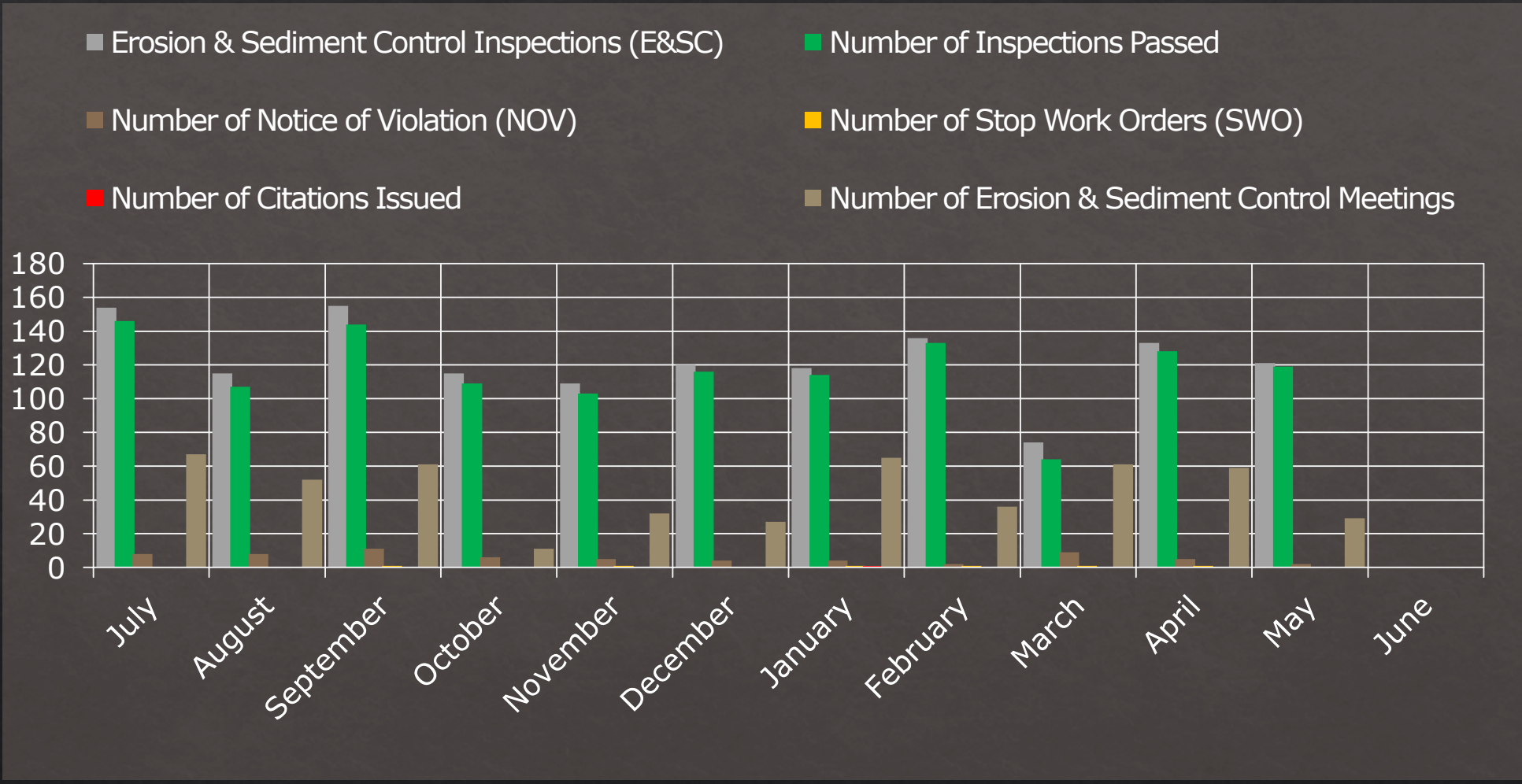


MS4 Minimum Control Measure #3 – IDDE: Illicit Discharge Investigations



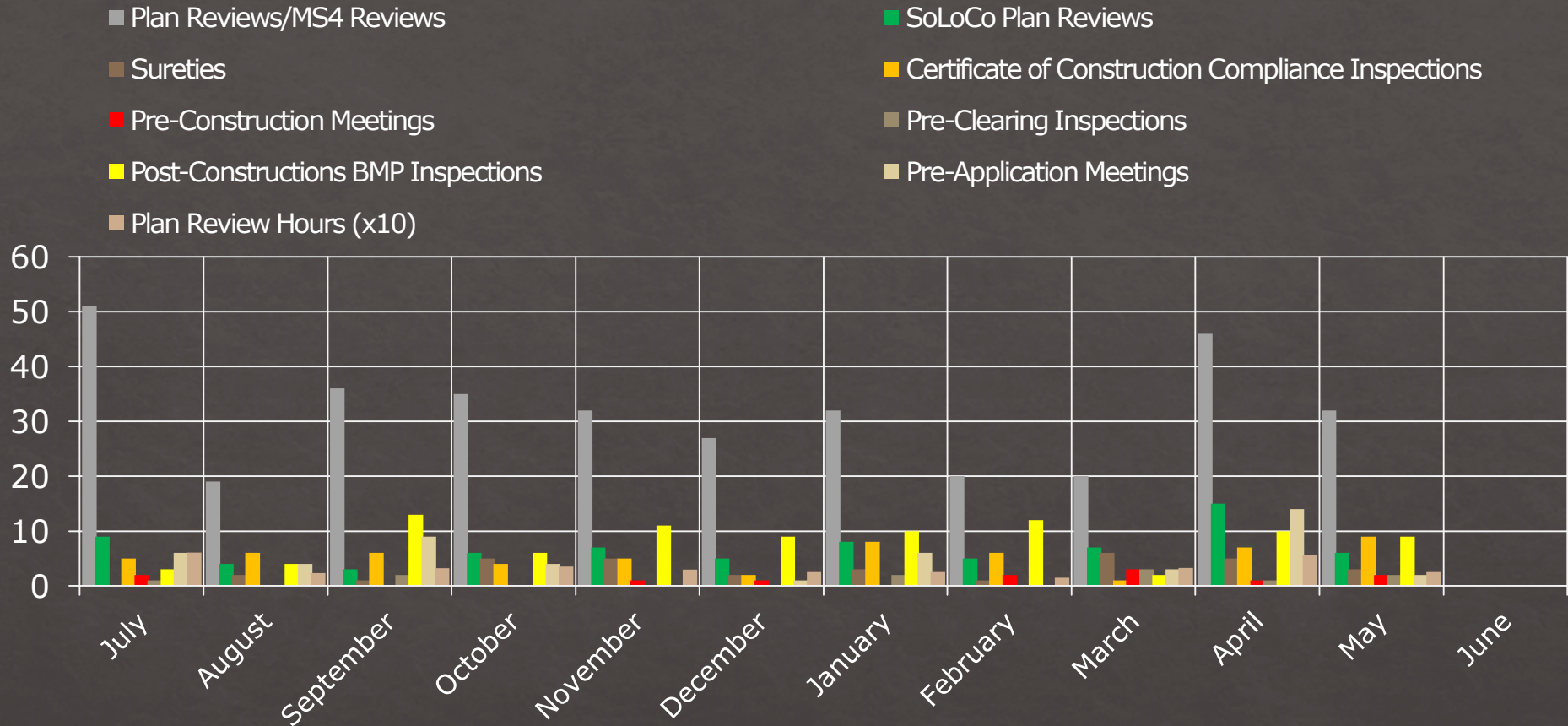
	Number of Illicit Discharge Investigations	Number of Notices of Violation Issued	Number of Citations Issued	Number of Meetings
FY 2026 YTD Totals	20	10	3	20

MS4 Minimum Control Measure #4 - Construction Site Stormwater Runoff Control



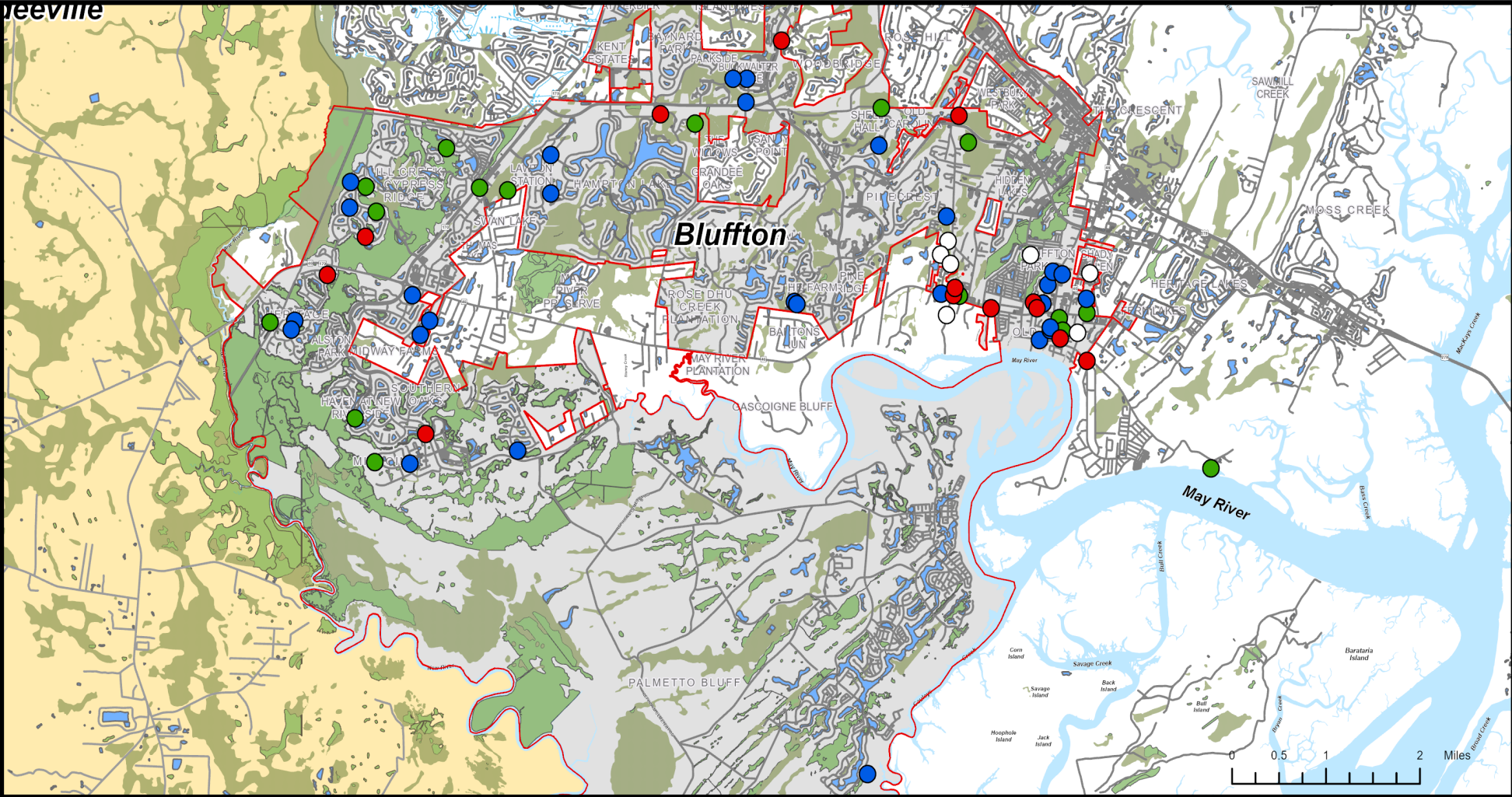
	Number of Sediment & Erosion Control Inspections	Number of Inspections Passed	Number of NOV's Issued	Number of SWO Issued	Number of Citations Issued	Number of E&SC Meetings
FY 2026 YTD Totals	1,350	1,283	64	6	1	500

MS4 Minimum Control Measure #5 Stormwater Plan Review & Related Activity



	Plan Reviews MS4 Reviews	SoLoCo Plan Reviews	Sureties	CCC Inspections	Pre-Construction Meetings	Pre-Clearing Inspections	Post Construction BMP Inspections	Pre-Application Meetings	Total Plan Review Hours
FY 2026 YTD	350	75	33	59	12	11	89	49	363.50 Hrs.

Citizen Request for Watershed Mngt. Services & Activities Map



LEGEND:

- Citizen Concerns
- Drainage & Flooding
- Environmental Concerns
- Education & Outreach
- + Bluffton
- Beaufort County
- + Jasper County
- Street or Road
- River or Creek
- Lagoon or Pond
- Emergent Wetland
- Forested Wetland

WATERSHED MANAGEMENT ROUTINE SERVICES & ACTIVITIES MAP
 Town of Bluffton
 Beaufort County, SC

Updated: 5/15/2026

	Number of Citizen Requests Investigated	Number of Meetings
FY 2026 YTD Totals	94	69

FY26 CIP Master Project Schedule



Planning*
 Design**
 Construction***

**Planning includes surveying, environmental and cultural investigations, initial master planning and other due diligence reports and studies.*

***Design includes conceptual, preliminary and final design, construction documents, permitting, easement acquisition and bidding.*

****Construction includes contracts, geotechnical reports, all horizontal and vertical construction, construction administration, as-builts and final closeout.*

SUBJECT TO CHANGE

FY26 CIP Master Project Schedule



Planning*
 Design**
 Construction***

**Planning includes surveying, environmental and cultural investigations, initial master planning and other due diligence reports and studies.*

***Design includes conceptual, preliminary and final design, construction documents, permitting, easement acquisition and bidding.*

****Construction includes contracts, geotechnical reports, all horizontal and vertical construction, construction administration, as-builts and final closeout.*

SUBJECT TO CHANGE