

# TOWN COUNCIL



## STAFF REPORT

### Projects and Watershed Resilience Department

<b>MEETING DATE:</b>	March 10, 2026
<b>SUBJECT:</b>	Projects and Watershed Resilience Department Monthly Report
<b>PROJECT MANAGER:</b>	Kimberly Washok-Jones, Department Director

### **CAPITAL IMPROVEMENTS PROGRAM (CIP) UPDATE**

#### **Administrative Update**

- Finalizing budgets for FY27 Operating expenses and CIP project data sheets.

#### **FACILITIES**

##### **1. Law Enforcement Center Facility Improvements**

- No activity - pending Council direction from Creech's space needs analysis.
- PS is proposing HVAC replacement.

##### **2. Sarah Riley Hooks Cottage**

- Exterior painting, decking and interior trim are underway.
- Executed contract for site and landscape construction with Nix Construction.
- **Next Steps:**
  - Continue cottage reconstruction through FY26.
  - Begin site construction in March 2026.

##### **3. New Riverside Barn Park – Public Services Building**

- Architectural Plans, Site Development Plans and easements are **complete**.
- **Next Steps:**
  - Complete structural design and permitting in FY26.
  - Prepare bid solicitations in Spring 2026 for building and site development construction.

##### **4. New Riverside Barn Park – Event Lawn Pavilion**

- Pavilion is **complete**.
- **Next Steps:**
  - Determine potential stage configurations for future concerts.

##### **5. Public Services Expansion and New Watershed Facility**

- Obtained wetland surveys to evaluate developable land for expansion.

#### **HOUSING**

##### **1. Town of Bluffton Affordable Housing Project – The May**

- WorkForce State of Mind partnership to construct 12 units at 1095 May River Rd.
- Workforce State of Mind states construction to be complete in the 1<sup>st</sup> quarter of 2026.
- **Next Steps:**
  - Staff reviews applications for payment.

## **PARKS**

### **1. Park Improvements**

- Complete landscape modifications at Wright Family Park in March.

### **2. Oyster Factory Park**

- Pavilion repairs **complete**.
- Architect working on CDs of restroom expansion.
- **Next Steps:**
  - Complete plans and bid packages for the restroom expansion.
  - Replace fans and paint pavilion.

### **3. Oscar Frazier Park**

- Splash Pad warranty repairs and resurfacing of splash pad perimeter deck are **complete**.

### **4. New Riverside Barn Park – Phase 2 Trails & Disc Golf**

- Engineering design and permitting for the Phase 2 trails is **complete**.
- Public Services completed selective clearing for the Disc Golf Course.
- **Next Steps:**
  - Prepare solicitation for Phase 2 trails in March 2026 with construction in Summer 2026.
  - Complete bid documents for disc golf features (pads, baskets, steps, retaining walls, etc.).

### **5. New River Linear Trail**

- BPD enforcing no trespassing until construction is completed in summer 2026.
- Construction of Bridges 2 and 3 and Four Seasons boardwalk connection are **complete**.
- **Next Steps:**
  - Construction of the New River pierhead is underway.

### **6. Buckwalter Place Park Improvements**

- Hilton Head Landscape has begun construction of Phase 2 and 3 site improvements.
- Trellis swing and misting station layouts, retaining wall and submittals/permits are **complete**.
- **Next Steps:**
  - Public Art Committee considering options.
  - Install outdoor fitness equipment.
  - Concrete pour at misting stations.

## **STORMWATER & SEWER**

### **1. Historic District Sewer Extension Phases 4 through 6 – Lawrence, Green and Water Streets**

- Main line sewer construction and as-builts for HD Sewer are **complete**.
- **Next Steps:**
  - BJWSA approved testing of main line system. Awaiting permit to operate from DES.
  - Begin service connections and pump stations construction.

### **2. Comprehensive Drainage Plan Improvements**

- Draft Engineering Report for Crooked Cove **completed** and comments provided. Field meeting held to discuss recommended projects and alternatives.
- Additional flow data is needed to calibrate H/H 2D model for Crooked and Guerrard Coves and is in process.
- **Next Steps:**
  - Guerrard Cove Engineering Report submittal.
  - Scope of work for RFQu completed for Rose Dhu Creek drainage area. Internal comments provided and being evaluated/incorporated for posting of RFQu.
  - SCEMD HMCP Grant Application for Huger/Verdier Cove Watershed Study pending.

### 3. May River Watershed Action Plan Impervious Restoration Water Quality Projects

- Preliminary Design of 9 participating sites **complete**.
- 15 additional sites' concept plans **completed**.
- Internal discussions and review of Impervious Restoration Program policy document held and comments being prepared for Final Draft development.
- **Next Steps:**
  - Finalize Impervious Restoration Program Policy Document.
  - Collaborate with Director of Procurement for BCSD and private owners' agreement to construct impervious restoration projects at school sites.

### 4. Stoney Creek/Palmetto Bluff Sewer Partnership

- BJWSA is the Project Manager as RIA-SCIIP grant recipient; updates can be found [here](#).

## **ROADS**

### 1. Pathway Pedestrian Safety Improvements

- **Completed** Historic District for ADA compliance and May River Road RRFB crossings.
- New Riverside easement donation approved at 12/9/25 Town Council.
- **Next Steps:**
  - The design of Bluffton Road crosswalk and bumpout designs at State of Mind and Dr. Mellichamp for SCDOT review continues.
  - New Riverside Rd. crossing design awaiting developer and POA approval.
  - Phase 3 additional design of 30 locations continues. Working with SROs and school officials for crossings near schools.

### 2. Bridge Street Streetscape

- **Completed** lighting plan, IT fiber conduit connection to Town Hall, and Montessori and Bluffton Telephone easements.
- Streetscape and lighting easements all donated and **completed**.
- Clarified SCDOT right of way conflict.
- **Next Steps:**
  - Construction Contract approval is proposed at the 3/10/26 TC meeting.
  - Construction is proposed to begin in May 2026.

### 3. Calhoun Street Streetscape

- Preliminary engineering design is 75% complete and plans submitted to agencies for review and approval.
- **Next Steps:**
  - Continue easement negotiations with May River Road property owners for main transmission line for underground power.
  - Continue to coordinate underground power layout and modifications with Dominion Energy and CDDC Design.
  - Prepare easement acquisition plats for Phase 1 in FY26 and begin easement acquisition.
  - Phased construction planned to begin in FY28 pending budget approval and acquisition of all required easements.

### 4. Boundary Street Streetscape

- Engineering design is 80% complete and submitted to agencies for review.
- Submitted SCDES permit amendment moving Lawrence St. drainage outfall to Green St.
- **Next Steps:**
  - Prepare easement exhibits, appraisals and continue easement negotiations.
  - Construction planned to be bid FY26, subject to acquisition of required easements and permit approvals.

**5. Ghost Roads**

- Surveying and easement exhibits are **complete**.
- **Next Steps:**
  - TC and legal's determination is the Town owns all Ghost Roads. No further action is necessary.

**6. Pritchard Street Drainage Improvements**

- Construction and administration are on-going.
- Change Order #1 approved.
- Design submittal for relocation of sidewalk North of MC Riley Early Childhood Learning Center to reduce tree removals under review.
- **Next Steps:**
  - All easements for construction have been acquired or agreed upon.
  - Continue construction through FY26.

**THIS SPACE LEFT INTENTIONALLY BLANK.**

## **WATERSHED MANAGEMENT UPDATE**

### **Administrative Update**

- Town's MS4 Program audit by SCDES for NPDES permit compliance received a satisfactory rating.
  - Verbal offer extended and accepted for the Stormwater Technician position.
  - Moreno attended the Beaufort County Stormwater Utility Board Meeting.
  - Lewis attended the Southern Lowcountry Resilience Collaborative (SLRC) Meeting.
  - Lewis attended the Salkahatchie Watershed Advisory Group Meeting.
  - Jones attended The Nature Conservancy's South Coast Regional Advisory Group meeting for Coastal Resilience Implementation Plan development.
1. **SC Department of Environmental Services May River Shellfish Harvesting Monitoring Data Year-to-Date and May River Shellfish Harvesting Status Exhibit – Attachments 1 and 1a**
  2. **May River Watershed Action Plan Implementation Summary – Attachment 2, 2a, and 2b**
    - Pet Waste Station Program remains open to Bluffton residents and property owners.
    - May River headwaters stormwater model calibration continues. Staff provided feedback on the Model and Report. In-person model training with the consultant team scheduled.
    - SCDES collected shellfish harvesting samples in February. Microbial Source Tracking (MST) samples were taken with regulatory samples.
    - MST Sampling Program targets potential fecal sources from human, dog, deer, horse, and bird waste.
      - Samples are collected for five (5) wet and dry weather events for each subwatershed.
      - All dry sampling events for the coves have been completed. Additional samples will only be collected during qualifying wet weather conditions. None collected during this reporting period.
  3. **Resiliency**
    - Resilience Plan contract award anticipated for April 2026 Council approval.
    - Staff met with the City of Charleston to discuss their Resilience Plan.
    - Staff met with Furman University's Shi Institute for the routine monthly check-in.
    - Staff received the SC Forestry Commission technical assistance grant final report and associated GIS files from the Green Infrastructure Center (GIC). These materials are under review.
    - Wetlands and Resiliency Ordinances:
      - Staff met with Duke University and the City of Folly Beach to discuss the Town's wetland ordinance.
      - Staff met with the City of Norfolk, Virginia, to discuss their resilience ordinance and adoption process.
      - McCormick Taylor and Center for Watershed Protection continue wetland and resilience work.
      - Responses to public comments on the wetland ordinance are under consultant review until the end of March.
      - Reviews continue for Wetland Mapping Tool and its accompanying memorandum with minor revisions expected.

### **Municipal Separate Storm Sewer System (MS4) Program Update**

1. **MS4 Minimum Control Measure (MCM) - #1 Public Education and Outreach, and MCM – #2 Public Participation and Involvement**
  - Designs submitted as part of the Storm Drain Art Pilot Project are to be reviewed by the

- Public Art Committee in March.
- Staff met with the Hampton Lake ARB to discuss post-construction requirements.
  - Continued creating handouts for various business categories to include as part of the business license renewal process.
  - Discussing a possible grant for dog waste stations with Rotary. Staff presenting to the Rotary on 05/27/26 regarding the Town's Water Quality Program.
2. May River Watershed Action Plan Advisory Committee (WAPAC) voted to hold a meeting in March to further discuss the Town's resilience planning efforts. Staff are coordinating with the committee. – **Attachment 3**
  3. **MS4 MCM – #3 Illicit Discharge Detection and Elimination**
    - E. coli Concentrations Trend Map – **Attachment 4a**
    - Monthly, Microbial Source Tracking (MST) Map – **Attachment 4b**
    - Illicit Discharge Investigations – **Attachment 4c**
  4. **MS4 MCM – #4 Construction Site Stormwater Runoff Control – Attachment 5**
  5. **MS4 MCM – #5 Stormwater Plan Review and Related Activity – Attachment 6**
  6. **MS4 MCM – #6 Good Housekeeping (Staff Training/Education)**
    - Crotty, Sease, and Harrell attended the International Erosion Control Association's (IECA) Annual Conference.
  7. **MS4 MCM – #6 Good Housekeeping (Ditch, Drainage and Roadside Maintenance)**
    - Public Services performed weekly street sweeping on Calhoun St., Highway 46, Bruin Rd., May River Rd., Pin Oak St., and curbs/medians on Simmonsville and Buck Island Rds.
    - Performed ditch inspections.
      - Buckwalter ditch (917 LF)
      - Arrow ditch (2,569 LF)
      - Red Cedar ditch (966 LF)
      - Buck Island roadside ditch (15,926 LF)
      - Simmonsville roadside ditch (13,792 LF)
    - Ongoing roadside mowing, litter clean-up and maintenance of Masters' Way, McCracken Circle, Hampton Parkway, Buck Island and Simmonsville Rds., Goethe Rd., Shults Rd., Jason and Able Sts., Whispering Pine Rd., May River Rd., and Eagles Field.
  8. **Citizen Request for Watershed Management Services & Activities – Attachment 7**

### **Attachments**

1. SCDES Shellfish Harvesting Monitoring Data Year-to-Date
  - a. SCDES May River Shellfish Harvesting Status Exhibit
2. May River Watershed Action Plan Implementation Summary
  - a. Cumulative Microbial Source Tracking (MST) Results for Targeted Sampling
  - b. Targeted MST Sampling Sites Map
3. MS4 Minimum Control Measures #1 and #2 – WAPAC Meeting Schedule
4. MS4 Minimum Control Measure #3 – Illicit Discharge Detection and Elimination
  - a. E. coli Concentrations Trend Map
  - b. Monthly Microbial Source Tracking Trend Map – All Sources
  - c. Illicit Discharge Investigations
5. MS4 Minimum Control Measure #4 – Construction Site Stormwater Runoff Control
6. MS4 Minimum Control Measure #5 – Stormwater Plan Review and Related Activity
7. Citizen Request for Watershed Management Services and Activities Map
8. CIP Master Project Schedules

	19-19				19-19A				19-19B				19-19C				19-24				19-16			
	2023	2024	2025	2026	2023	2024	2025	2026	2023	2024	2025	2026	2023	2024	2025	2026	2023	2024	2025	2026	2023	2024	2025	2026
	Fecal Coliform (MPN)	Fecal Coliform (MPN)	Fecal Coliform (MPN)	Fecal Coliform (MPN)	Fecal Coliform (MPN)	Fecal Coliform (MPN)	Fecal Coliform (MPN)	Fecal Coliform (MPN)	Fecal Coliform (MPN)	Fecal Coliform (MPN)	Fecal Coliform (MPN)	Fecal Coliform (MPN)	Fecal Coliform (MPN)	Fecal Coliform (MPN)	Fecal Coliform (MPN)	Fecal Coliform (MPN)	Fecal Coliform (MPN)	Fecal Coliform (MPN)	Fecal Coliform (MPN)	Fecal Coliform (MPN)	Fecal Coliform (MPN)	Fecal Coliform (MPN)	Fecal Coliform (MPN)	Fecal Coliform (MPN)
December	33.0	NS	70.0		33.0	NS	17.0		7.8	NS	2.0		13.0	NS	6.1		7.8	NS	6.8		17.0	NS	2.0	
November	13.0	170.0	13.0		2.0	130.0	23.0		4.5	170.0	4.0		4.5	49.0	4.5		2.0	79.0	46.0		4.5	33.0	4.5	
October	33.0	49.0	70.0		23.0	17.0	170.0		17.0	13.0	70.0		33.0	2.0	70.0		2.0	11.0	79.0		6.8	17.0	13.0	
September	23.0	33.0	31.0		13.0	240.0	49.0		13.0	13.0	7.8		7.8	7.8	14.0		17.0	22.0	33.0		13.0	130.0	2.0	
August	23.0	33.0	220.0		49.0	23.0	49.0		6.8	23.0	79.0		13.0	49.0	79.0		23.0	49.0	33.0		2.0	13.0	7.8	
July	350.0	31.0	70.0		920.0	31.0	79.0		70.0	32.0	350.0		49.0	32.0	130.0		33.0	33.0	21.0		17.0	32.0	11.0	
June	14.0	7.8	170.0		7.8	7.8	170.0		23.0	6.8	110.0		13.0	4.5	49.0		33.0	2.0	23.0		13.0	2.0	6.8	
May	23.0	27.0	33.0		33.0	22.0	170.0		17.0	23.0	79.0		13.0	17.0	21.0		33.0	7.8	49.0		21.0	4.0	4.5	
April	170.0	49.0	NS		130.0	17.0	NS		110.0	17.0	NS		70.0	4.0	NS		NS	11.0	NS		7.8	23.0	NS	
March	23.0	49.0	240.0		49.0	31.0	46.0		17.0	11.0	23.0		17.0	4.5	7.8		17.0	22.0	13.0		17.0	4.5	4.0	
February	540.0	49.0	33.0		350.0	49.0	49.0		240.0	11.0	79.0		240.0	22.0	79.0		33.0	7.8	13.0		33.0	11.0	17.0	
January	33.0	49.0	NS	23.0	33.0	23.0	NS	4.5	13.0	4.5	NS	4.5	33.0	4.5	NS	7.8	7.8	7.8	NS	1.8	4.5	2.0	NS	2.0
** Truncated GeoMetric Mean	38.0	39.0	47.0	47.0	30.0	30.0	41.0	41.0	17.0	16.0	16.0	16.0	16.0	14.0	15.0	15.0	9.0	10.0	16.0	16.0	8.0	10.0	9.0	9.0
** Truncated 90th Percentile	211.0	187.0	168.0	168.0	152.0	163.0	193.0	193.0	77.0	79.0	72.0	72.0	71.0	74.0	64.0	64.0	44.0	47.0	61.0	61.0	26.0	38.0	36.0	36.0

NS = No Sample

**SCDES Regulatory Requirements:**

Geometric Mean ≤ 14

90th Percentile ≤ 43

\*\* Town staff calculations utilizing SCDES statistics

**Note:**

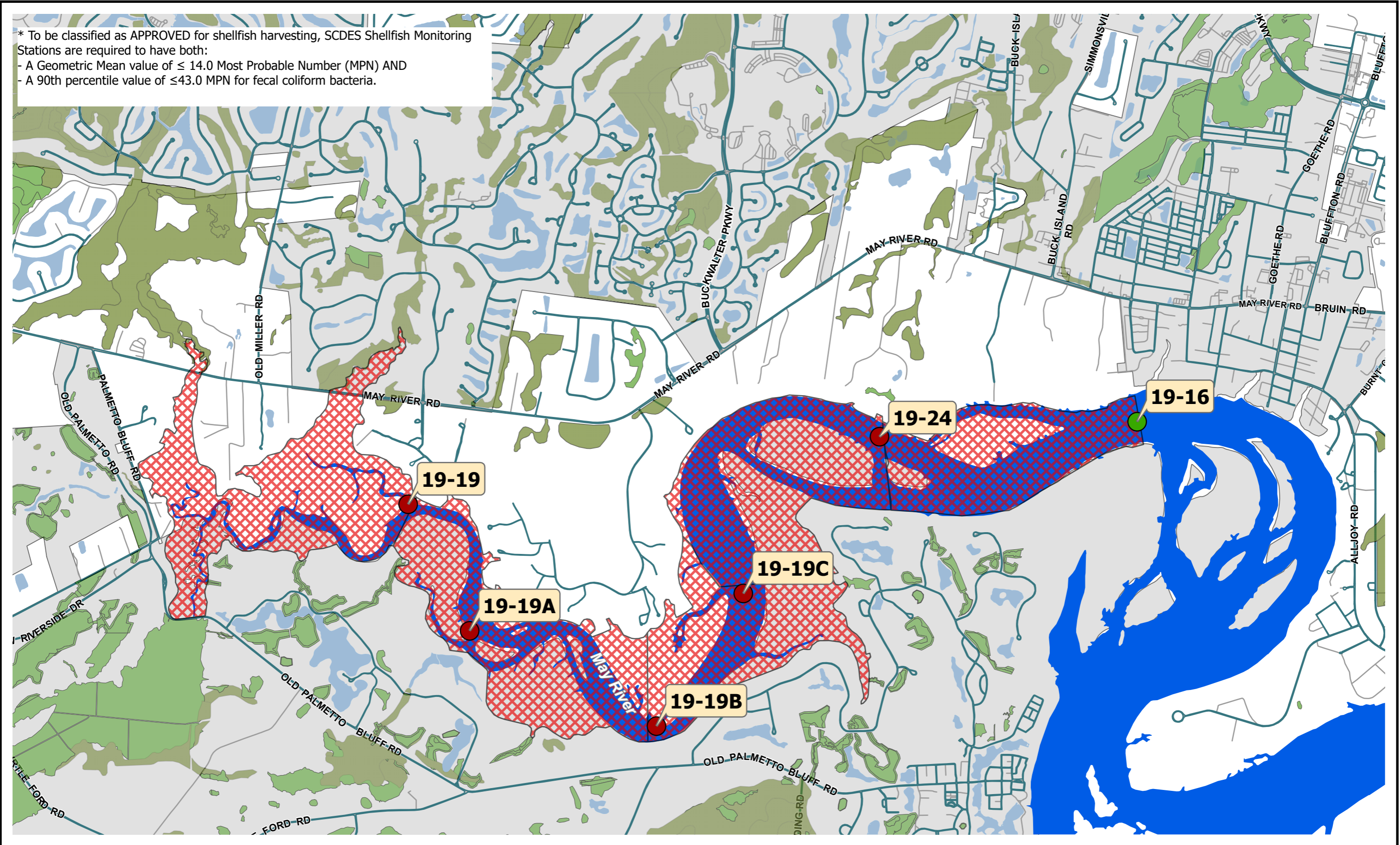
December 2024 ends the data collection period for 2025 shellfish harvesting season.









December 2025 ends the data collection period for 2026 shellfish harvesting season.

2024 fecal coliform data is part of the 2025 classification data collection period.

2025 fecal coliform data is part of the 2026 classification data collection period.

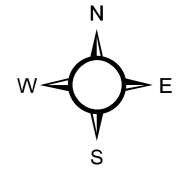
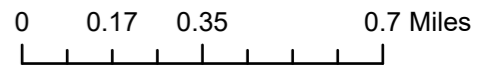
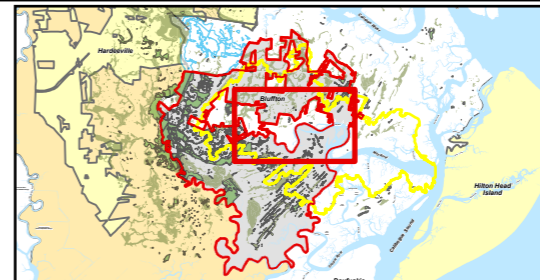
\* To be classified as APPROVED for shellfish harvesting, SCDES Shellfish Monitoring Stations are required to have both:  
 - A Geometric Mean value of  $\leq 14.0$  Most Probable Number (MPN) AND  
 - A 90th percentile value of  $\leq 43.0$  MPN for fecal coliform bacteria.



-  Town Bluffton Jurisdiction
-  Beaufort County Jurisdiction
-  Restricted 2025/2026 Shellfish Season
-  Streets
-  Water
-  Wetlands
-  Open Shellfish Monitoring Station
-  Closed Shellfish Monitoring Station

## SCDES SHELLFISH HARVESTING STATUS Town of Bluffton

Beaufort County, SC  
Date: 9/17/2025 9:28 AM



## May River Watershed Action Plan Update & Modeling Report (MRWAP) Implementation Summary

### **1. MRWAP Background**

- *May River Watershed Action Plan Update & Modeling Report (MRWAP)* was completed November 2020.
- Town Council adopted the MRWAP as a supporting document to the Comprehensive Plan in February 2021.
- The Action Plan Update & Modeling Report included the development of watershed-water quality models (WQ Model) for the four (4) May River Headwaters subwatersheds (Stoney Creek, Rose Dhu Creek, Duck Pond, and Palmetto Bluff) where the shellfish impairments are located.
- The purpose of the modeling effort was to better understand fecal coliform (FC) fate and transport in the Headwaters subwatersheds to develop strategies ultimately intended to open all shellfish stations to harvesting. To capture the variety of storm events and environmental conditions, the Project Team developed a continuous simulation of both water quantity and quality.
- The MRWAP included new water quality improvement projects resulting from the WQ Model. Additionally, the potential fecal bacteria reduction benefits of septic to sewer conversion in the four (4) Headwaters subwatersheds were modeled.

### **2. Septic to Sewer Project Recommendations/Evaluations**

#### **Background:**

- The MRWAP evaluated four (4) septic to sewer conversion projects in the Rose Dhu Creek and Stoney Creek subwatersheds:
  - Cahill
  - Gascoigne
  - Stoney Creek
  - Pritchardville
- These projects overlap with 42 subcatchments in the Stoney Creek watershed and 11 in Rose Dhu Creek. Based on WQ Model outputs, these projects alone may potentially reduce FC loading by  $3.46 \times 10^{13}$  FC per year.
- The estimated septic to sewer conversion costs of these projects is \$5.5 million.

This space left intentionally blank

### Update: Stoney Creek/Palmetto Bluff Sewer Partnership

- BJWSA is the Project Manager as the awardee of the RIA-SCIIP grant.
- **Next Steps:**
  - BJWSA updates can be found at: <https://bjwsa.org/251/Go2Sewer-for-a-Cleaner-Stoney-Creek>

### 3. MRWAP Impervious Restoration Water Quality Projects

#### Task 1: MRWAP Eleven (11) Proposed Projects Background

- Eleven (11) project sites (incorporating various individual BMPs) were selected in consultation with the Town (prioritizing subcatchments with FC bacteria hotspot and/or large impervious areas). These sites were evaluated in terms of the potential benefits gained by retrofitting to meet the 95th percentile storm retention, to the maximum extent possible, under the proposed Impervious Area Restoration/Stormwater Retrofit Program.
- Based on WQ Model outputs, these projects alone may potentially reduce FC loading by
  - $2.99 \times 10^{14}$  FC reduction for the Full SWRv (entire sub-basin drainage area catchment).
  - $2.53 \times 10^{14}$  FC reduction for the Reduced SWRv projects (impervious area drainage area of sub-basin catchment).
- The estimated Full SWRv projects costs is \$32.7 million and the estimated cost of Reduced SWRv projects is \$22.6 million.
- Currently the Towns' Impervious Restoration Program is targeting Reduced SWRv for future projects.

#### Task 1: MRWAP Eleven (11) Proposed Projects Update

- Eleven (11) proposed project sites Rose Dhu Creek (6 projects) and Stoney Creek (5 projects):
  - All geotechnical work, evaluations, site assessments, planning, engineering, and preliminary designs for the 8 original sites is **complete**.
    - Bluffton Early Learning Center (BELC).
    - Boys and Girls Club of Bluffton (BGC).
    - Benton House (BH).
    - Bluffton High School (BHS).
    - Buckwalter Recreation Center (BRC).
    - ~~Lowcountry Community Church (LCC)~~. **Declined to Participate.**
    - McCracken Middle School/Bluffton Elementary School (MMSBES).
    - May River High School.
    - ~~One Hampton Lake Apartments (OHLA)~~. **Declined to Participate.**
    - Pritchardville Elementary School (PES).

- ~~Palmetto Pointe Townes (PPT)~~. **Declined to Participate.**
- Next Steps:
  - Finalize Impervious Restoration Program Policy Document.
  - Continue to collaborate with Director of Procurement for an agreement with BCSD and Private Owners to construct impervious restoration projects at school sites.

### **Task 2: Identify Fifteen (15) New Project Sites Background**

- Identify 15 new project sites for Town of Bluffton Impervious Restoration/BMP Retrofit Projects.
- The Town wishes to identify an additional 15 project sites located within the municipal limits of Bluffton for the Impervious Restoration/BMP Retrofit Program. However, the criteria for site selection will be considered to be more “low hanging fruit” based on the following:
  - Within Town of Bluffton Municipal limits.
  - Soils – sandy soils with high infiltration rates offer the biggest bang for the buck for water quality treatment/improvement. Utilizing soil survey and other information target sites where infiltration can be maximized on-site.
  - Public or governmental agency land/property owner (not SCDOT RoW).

### **Task 2: Identify Fifteen (15) New Project Sites Update**

- Preliminary Design of 9 participating sites complete.
- 15 additional sites concept plan development completed.
- Internal discussions and review of Impervious Restoration Program policy document held and comments being prepared for Final Draft development.
- **Next Steps:**
  - Finalize Impervious Restoration Program Policy Document.
  - Collaborate with the Director of Procurement for the Beaufort County School District and private owners’ agreement to construct impervious restoration projects at school sites.

### **Task 3: MRWAP Impervious Restoration Policy Documents Background**

- MRWAP Section 5.4.4. Stormwater BMP Retrofit Projects of the May River Watershed Action Plan Update and Model Report identifies potential Impervious Restoration/BMP Retrofit projects located on Public and Private Land. As mentioned earlier, one of the primary site selection criteria, at time of report development, was to identify sites with large impervious areas so that pollutant load reductions could be estimated and the benefits of such projects on stormwater quality quantified/estimated, if implemented into construction. Generally, Public Funds are not expended to improve private property nor is Town of Bluffton funding generally expended on Public Land owned by another

government entity. In order for such projects identified in Section 5.4.4. to move forward in the interest of improved water quality and for the overall benefit and welfare of the constituents of the Town of Bluffton, Policy Documents need to be formulated that establishes the parameters of such a Program to be initiated and implemented.

### **Task 3: MRWAP Impervious Restoration Policy Documents Update**

- Impervious Restoration Program Policy Document Draft submitted and under review. Fee-in-Lieu Program Policy Document - Adopted into the FY26 Master Fee Schedule at the July 2025 Town Council Meeting.
- As Adopted:
  - As part of the SoLoCo Stormwater Design Manual, developers may submit for MEP when the proposed development site has constraints or limitations to which prevent SoLoCo Stormwater Design Manual requirements from being met, specifically stormwater retention volume (SWRv) requirements. SWRv is the volume of stormwater runoff that a stormwater management system can store and treat to improve water quality. The MEP submittal must provide documentable evidence of the process the applicant has performed that demonstrates the restrictions to the use and implementation of the Best Management Practices (BMPs) to meet the SWRv requirements.
  - When a development project cannot accommodate the required SWRv due to on-site constraints identified in the approved MEP analysis, the developer is required to pay a Fee-In-Lieu (FIL) to the Town of Bluffton for the shortfall according to the FIL fee schedule has been adopted as part of the Master Fee Schedule. Funds collected through FIL payments will then be used by the Town to fund other qualified uses that protect water quality within the same watershed as the original project including:
    - The construction and maintenance of impervious restoration program water quality BMPs;
    - Purchase of land for increased conservation areas, application of Better Site Design to the approved Master Plan, buffers, undisturbed open space, and natural resource of significance areas, and
    - Purchase of development rights.
  - FIL payment is based on and equal to a unit of SWRv in cubic feet or designating a conservation area/easement area that protects a qualified natural resource that would otherwise require the same SWRv treatment if developed. The monetary value for a unit of SWRv is based on the current and typical costs for land as well as associated costs for design, construction, construction management, Town program management, post-construction inspection, and ongoing maintenance of water quality BMPs. The SWRv FIL rate is found in the Town's Master Fee Schedule, under Section VII "Stormwater Management Fees," allowing for annual

review and updates as needed based on the Consumer Price Index (CPI) or based on updated information regarding the cost of water quality BMP construction and maintenance, changes in the construction industry, availability of supplies, etc. If the developer and/or private property owner take responsibility for maintaining the BMP or provide land, then the associated cost for a unit of SWRv could be lessened accordingly.

Item/Description	Fee
<b>Fee-In-Lieu (FIL)</b> For projects with an approved Maximum Extent Practicable (MEP) submittal, the FIL amount is calculated based on an applicant’s shortfall, in cubic feet (CF), of the required Stormwater Retention Volume (SWRv).	\$151.92/CF of SWRv

- ToB CIP Project Impervious Restoration Program & incentives – Draft document in process.
- ToB SWRv Credit Trading Program - (under evaluation)

#### **4. Other, Related MRWAP Recommendations**

##### **Background:**

- The Town should incorporate volume reduction BMPs (those that encourage infiltration) within existing and future CIP projects to the maximum extent practical (MEP), especially for project locations with well-drained soils (HSG A or B).

##### **Other, Related MRWAP Recommendations Update:**

- Town is in progress of incorporating volume reduction BMPs within existing and future CIP projects to the MEP. Specific projects currently in progress include:
  - Bridge Street Streetscape Project
    - Water quality monitoring has been completed
  - Pritchard Street Drainage Improvement Project
    - Construction administration on-going.
    - Negotiations on Order #1 submittal resulting from changes in Bid Set Drawings versus For Construction Drawings due to required changes by permitting agencies finalized and being prepared for routing and approval.
    - Design submittal for relocation of sidewalk North of MC Riley Early Childhood learning Center to reduce tree removals under review.
  - **Prichard Street Next Steps:**

- All easements for construction have been acquired, except for one which is progressing through condemnation proceedings.

## **5. MRWAP Water Quality Program Recommendations Update**

### **Background:**

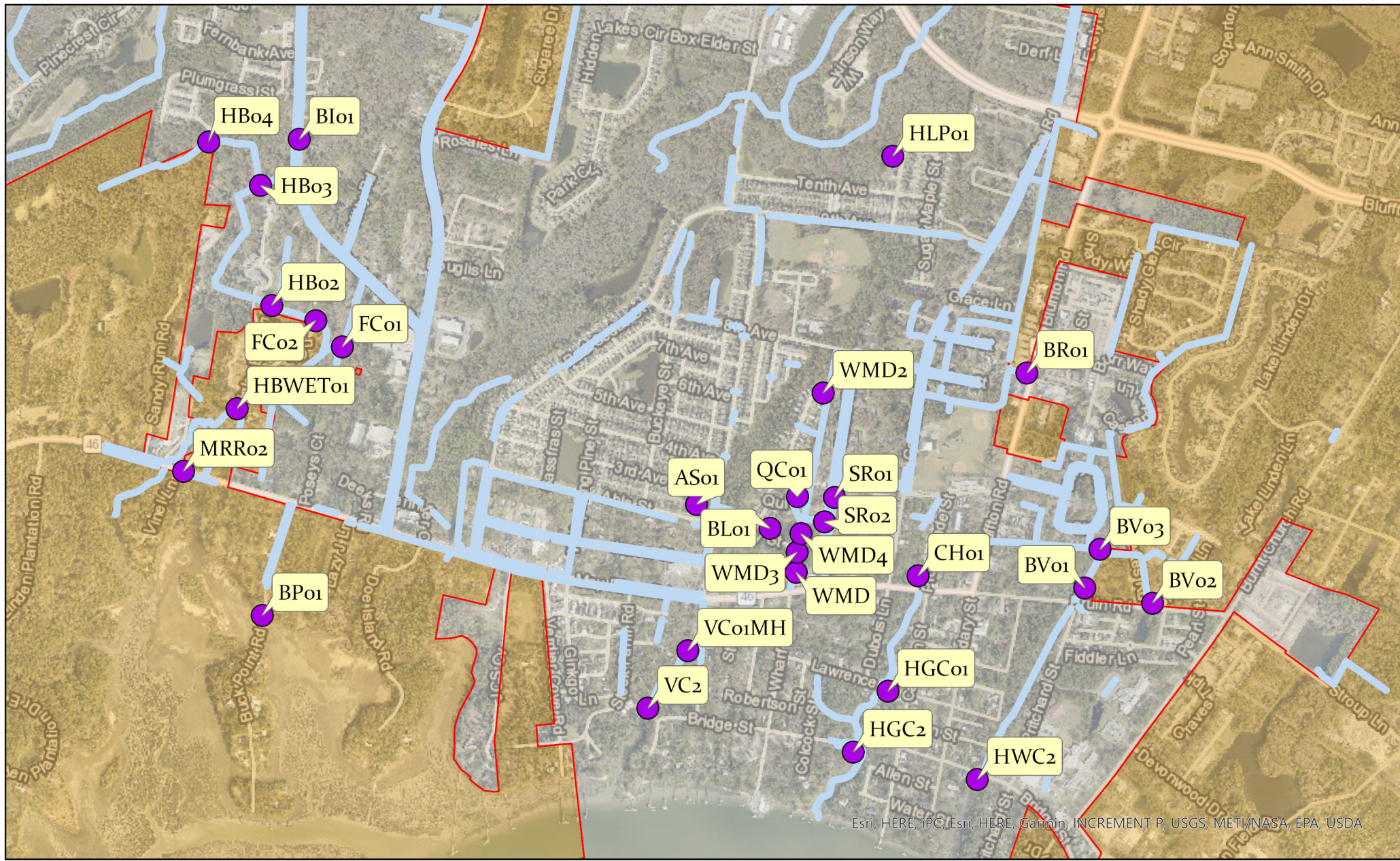
- Section 5.0 of the MRWAP included recommendations for the Town of Bluffton to improve upon their existing monitoring program (concentration and source typing) and flow.

### **MRWAP Water Quality Program Recommendations Update:**

- 5.1.1 In-House Microbial Source Tracking:
  - Staff have collaborated with Dr. Tye Pettay and the USCB Microbial Source Tracking (MST) Laboratory to develop new markers for tracking fecal contamination in the May River Watershed. The primary goal is to identify the sources of bacteria and establish effective mitigation plans. The human genetic marker remains the main focus of the Town's MST sampling program, as it poses the greatest risk to human health.
  - With the introduction of the new MST markers, Town staff have initiated a targeted MST sampling program, starting with the Crooked Cove subwatershed. The Town has now expanded this program into the Heyward, Huger, and Verdier Cove subwatersheds. The MST Program examines multiple potential sources of contamination, including human, dog, deer, horse, and bird waste. Staff are collecting samples during five (5) wet weather events and five (5) dry weather events to characterize each subwatershed.
  - All five (5) dry weather events have been completed for these subwatersheds, leaving only the wet weather events to be collected. Staff continue to focus on interpreting the MST results and developing new educational initiatives before transitioning the MST targeted sampling program to additional subwatersheds.
- 5.1.2 Future (New) Bacteria Monitoring Locations & 5.1.3 Future (New) Water Flow Monitoring Locations
  - The contract for work associated with the calibration of the Town's May River Watershed Action Plan model has been executed.
  - The 2025/2026 PCSWMM Model is complete, and a report has been provided by the consultant team. In-person PCSWMM training with the consultant team scheduled.

			Summary of All Targeted Microbial Source Tracking Marker Results To-Date									
			Human		Dog		Bird		Deer		Horse	
Sub-basin	Sampling Location	Location Description	Human (Number Times Detected/ Number Times Analyzed)	Percent of the Time Human Detected at Sampling Location	Dog (Number Times Detected/ Number Times Analyzed)	Percent of the Time Dog Detected at Sampling Location	Bird (Number Times Detected/ Number Times Analyzed)	Percent of the Time Bird Detected at Sampling Location	Deer (Number Times Detected/ Number Times Analyzed)	Percent of the Time Deer Detected at Sampling Location	Horse (Number Times Detected/ Number Times Analyzed)	Percent of the Time Horse Detected at Sampling Location
SCDES May River Shellfish Stations	19-19	May River at First Dock in Headwaters past Bluff	5/81	6.17%	2/17	11.76%	7/17	41.18%	3/15	20.00%	0/12	0.00%
	19-19A	Unnamed Tributary near SW corner of Gascoigne Bluff	3/82	3.66%	5/18	27.78%	4/17	23.53%	3/13	23.08%	0/12	0.00%
	19-19B	Bend in May River nearest the high bluff of Palmetto Bluff	4/80	5.00%	6/14	42.86%	3/14	21.43%	1/15	6.67%	1/11	9.09%
	19-19C	First Unnamed Tributary leading from Gascoigne Bluff	4/82	5.26%	2/18	11.11%	8/21	38.10%	0/14	0.00%	0/14	0.00%
	19-24	May River at Southern End of Crane Island	1/82	1.22%	2/20	10.00%	1/2	50.00%	0/9	0.00%	0/9	0.00%
Crooked Cove	HB04	Wetland area behind The Gray's Apartments	2/5	40.00%	1/5	20.00%	0/5	0.00%	5/5	100.00%	0/5	0.00%
	BI01	Buck Island Road Ditch	0/10	0.00%	6/10	60.00%	0/10	0.00%	6/10	60.00%	0/10	0.00%
	HB03	Wetland area behind The Gray's Apartments	1/7	14.29%	3/7	42.86%	0/7	0.00%	4/7	57.14%	1/7	14.29%
	HB02	Entrance to The Gray's Apartments	3/9	33.33%	5/9	55.56%	0/9	0.00%	3/9	33.33%	0/9	0.00%
	FC02	Frierson's Circle	2/10	20.00%	6/10	60.00%	3/10	30.00%	4/10	40.00%	0/10	0.00%
	HBWET01	Wetland area at Vista View Apartments	3/10	30.00%	3/10	30.00%	1/10	10.00%	3/10	30.00%	0/10	0.00%
	MRR02	Drainage ditch next to Cahill's	1/10	10.00%	8/10	80.00%	0/10	0.00%	4/10	40.00%	0/10	0.00%
	FC01	Frierson's Circle	1/9	11.11%	1/9	11.11%	0/9	0.00%	1/9	11.11%	0/9	0.00%
	BP01	Buck Point Road	0/5	0.00%	4/5	80.00%	0/5	0.00%	1/5	20.00%	0/5	0.00%
Heyward Cove	BR01	Drainage ditch near Taylor's Warehouses on Bluffton Rd	2/9	22.22%	4/9	44.44%	0/9	0.00%	0/9	0.00%	0/9	0.00%
	BV01	Drainage ditch at the intersection of Bruin Rd and Pritchard St	1/9	11.11%	5/9	55.56%	0/9	0.00%	1/9	11.11%	0/9	0.00%
	BV02	Drainage ditch at intersection of Hawkes Rd and Pritchard St	1/9	11.11%	2/9	22.22%	0/9	0.00%	0/9	0.00%	0/9	0.00%
	BV03	Drainage ditch at the end of Hawkes Rd	0/9	0.00%	5/9	55.56%	0/9	0.00%	1/9	11.11%	0/9	0.00%
	HWC2	Heyward Cove overpass on Bridge St	4/6	66.67%	6/6	100.00%	1/6	16.67%	1/6	16.67%	0/6	0.00%
Huger Cove	HGC01	Drainage ditch on Lawrence St	4/9	44.44%	6/9	66.67%	1/9	11.11%	0/9	0.00%	0/9	0.00%
	CH01	Ditch that connects behind the promenade to May River Rd	0/1	0.00%	0/1	0.00%	0/1	0.00%	0/1	0.00%	0/1	0.00%
	HGC2	Huger Cove overpass on Bridge St	3/6	50.00%	5/6	83.33%	0/6	0.00%	0/6	0.00%	0/6	0.00%

Verdier Cove	HLP01	Pond on Honey Locust Ave	0/7	0.00%	2/7	28.57%	0/7	0.00%	0/7	0.00%	0/7	0.00%
	SR01	Drainage ditch off Shultz Rd	0/4	0.00%	1/4	25.00%	0/4	0.00%	0/4	0.00%	0/4	0.00%
	SR02	Drainage ditch that leads from Shultz Rd to the ditch behind the Watershed Management Division	0/1	0.00%	0/1	0.00%	0/1	0.00%	0/1	0.00%	0/1	0.00%
	AS01	Pond at corner of Able St and Pin Oak St	0/7	0.00%	1/7	14.29%	0/7	0.00%	1/7	14.29%	0/7	0.00%
	WMD	Drainage ditch adjacent to Watershed building	5/6	83.33%	1/6	16.67%	3/6	50.00%	1/6	16.67%	0/6	0.00%
	WMD2	Beginning of drainage ditch running behind the Watershed building	0/3	0.00%	1/3	33.33%	0/3	0.00%	2/3	66.67%	0/3	0.00%
	WMD3	Middle of drainage ditch running behind the watershed building	2/2	100.00%	0/2	0.00%	1/2	50.00%	1/2	50.00%	0/2	0.00%
	WMD4	Middle of drainage ditch running behind the watershed building	0/1	0.00%	0/1	0.00%	0/1	0.00%	0/1	0.00%	0/1	0.00%
	VC01MH	Verdier Cove outfall on Thomas Heyward St	0/7	0.00%	2/7	28.57%	0/7	0.00%	1/7	14.29%	0/7	0.00%
	VC2	Kayak dock in Stock Farm	0/3	0.00%	1/3	33.33%	0/3	0.00%	0/3	0.00%	0/3	0.00%
	BL01	Manhole in front of 12 and 14 Brenden Ln	0/2	0.00%	0/2	0.00%	0/2	0.00%	0/2	0.00%	0/2	0.00%
	QC01	Manhole in front of 6 and 8 Quinn St	0/2	0.00%	0/2	0.00%	0/2	0.00%	0/2	0.00%	0/2	0.00%



# Town of Bluffton

## Targeted MST Sampling Locations

### Legend

- |                                   |                     |
|-----------------------------------|---------------------|
| Targeted MST Sampling Locations   | — Drainage Channels |
| ● Targeted MST Sampling Locations | Jurisdiction        |
|                                   | ■ BEAUFORT COUNTY   |
|                                   | ■ BLUFFTON          |



# TOWN OF BLUFFTON MAY RIVER WATERSHED ACTION PLAN ADVISORY COMMITTEE 2026 Meeting Schedule

MEETING DATES
January 22, 2026
March 9, 2026, 10am - 12:30pm
April 23, 2026
July 23, 2026
October 22, 2026

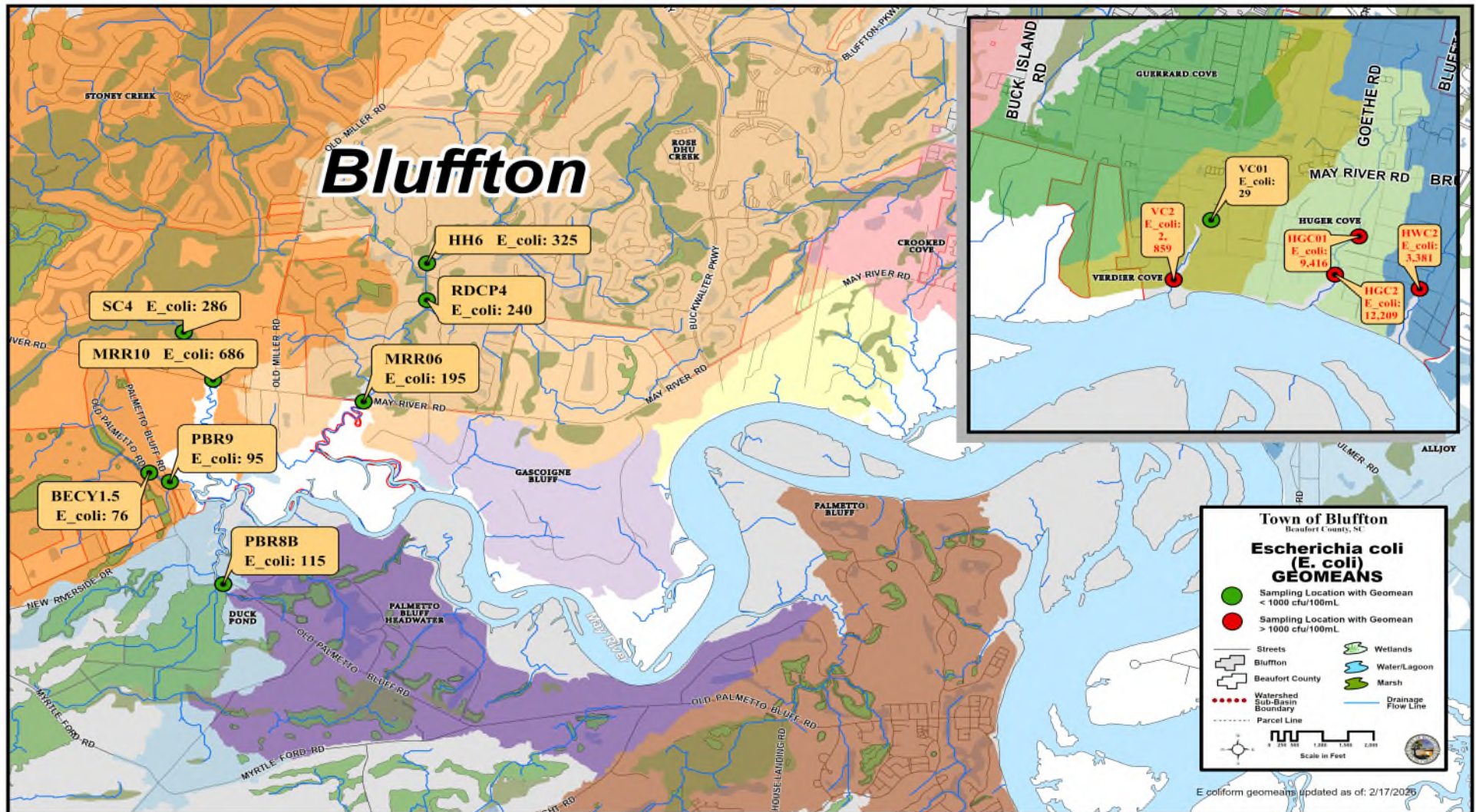
REGULAR MEETINGS ARE HELD THE 4th THURSDAY OF EACH MONTH AT 3:00 P.M.  
**EXCEPT MARCH**

**Please Note:**

Meetings will be held on scheduled meeting dates unless otherwise advertised with FOIA compliance.

APPROVED

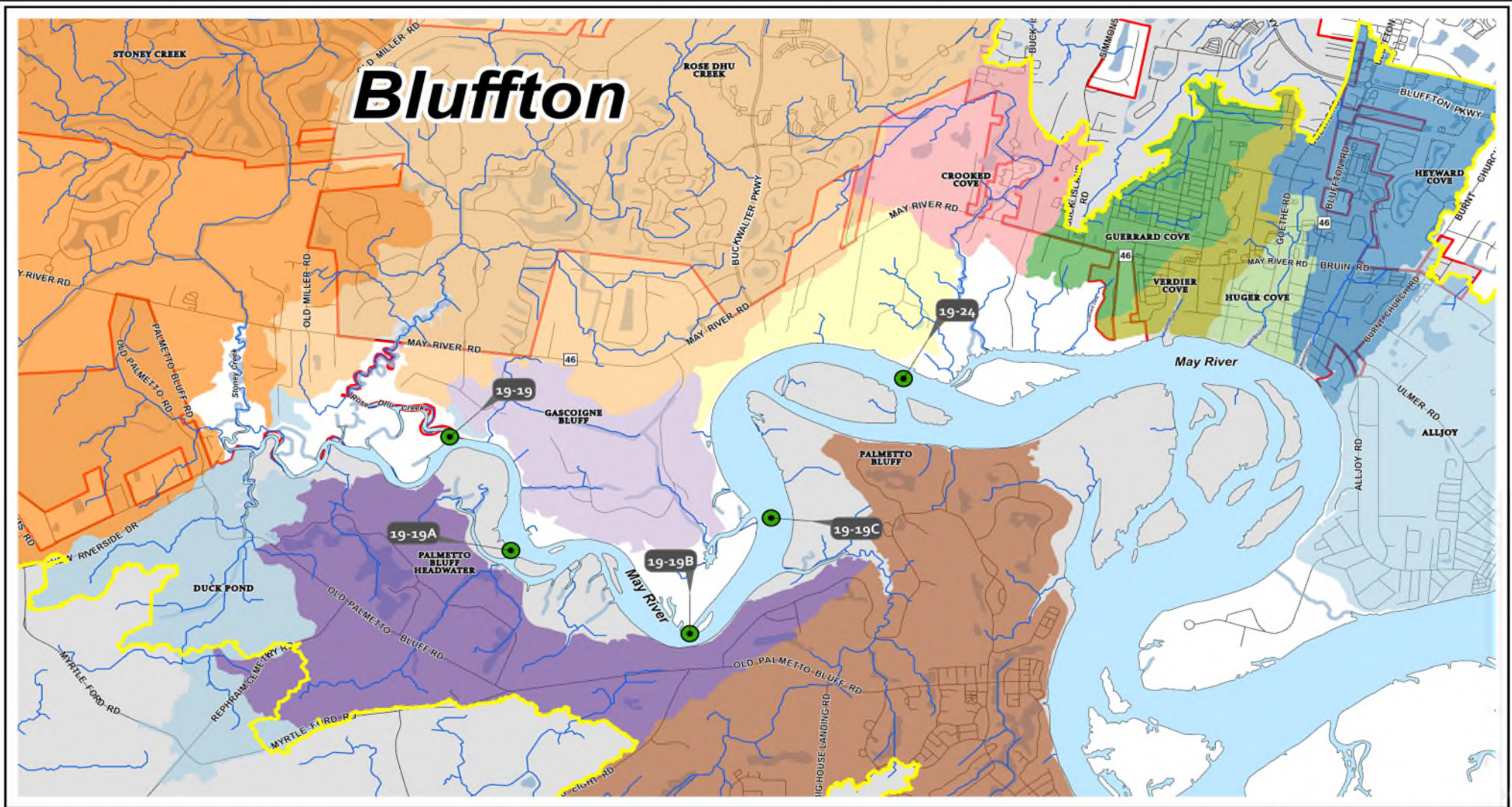
# MS4 Minimum Control Measure #3 – IDDE: *E. coli* Concentrations Trend Map



	USCB Water Quality Samples	Microbial Source Tracking Samples	MS4 Quarterly Samples Collected
FY 2026 YTD Totals	1,240	201	63

Totals include only samples submitted for laboratory analysis, and not *in situ* parameters.

# MS4 Minimum Control Measure #3 – IDDE: Microbial Source Tracking (MST) Map – By Markers Sources



**MST Detection**

- Human
- Bird
- Deer
- Dog
- Horse
- MST Sampling Location Without Detection

**May River Subwatersheds**

- 1 Alljoy
- 2 Heyward Cove
- 3 Huger Cove
- 4 Guerrard Cove
- 5 Crooked Cove
- 6 Verdier Cove
- 7 Rose Dhu Creek
- 8 Stoney Creek
- 9 Gascoigne Bluff
- 10 Palmetto Bluff Headwater
- 11 Palmetto Bluff
- 12 Unnamed
- 13 Palmetto Bluff
- 14 Duck Pond

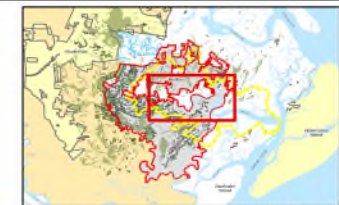
**Other Symbols:**

- May River Watershed
- Town Jurisdiction
- Beaufort County

## Town of Bluffton Beaufort County, SC

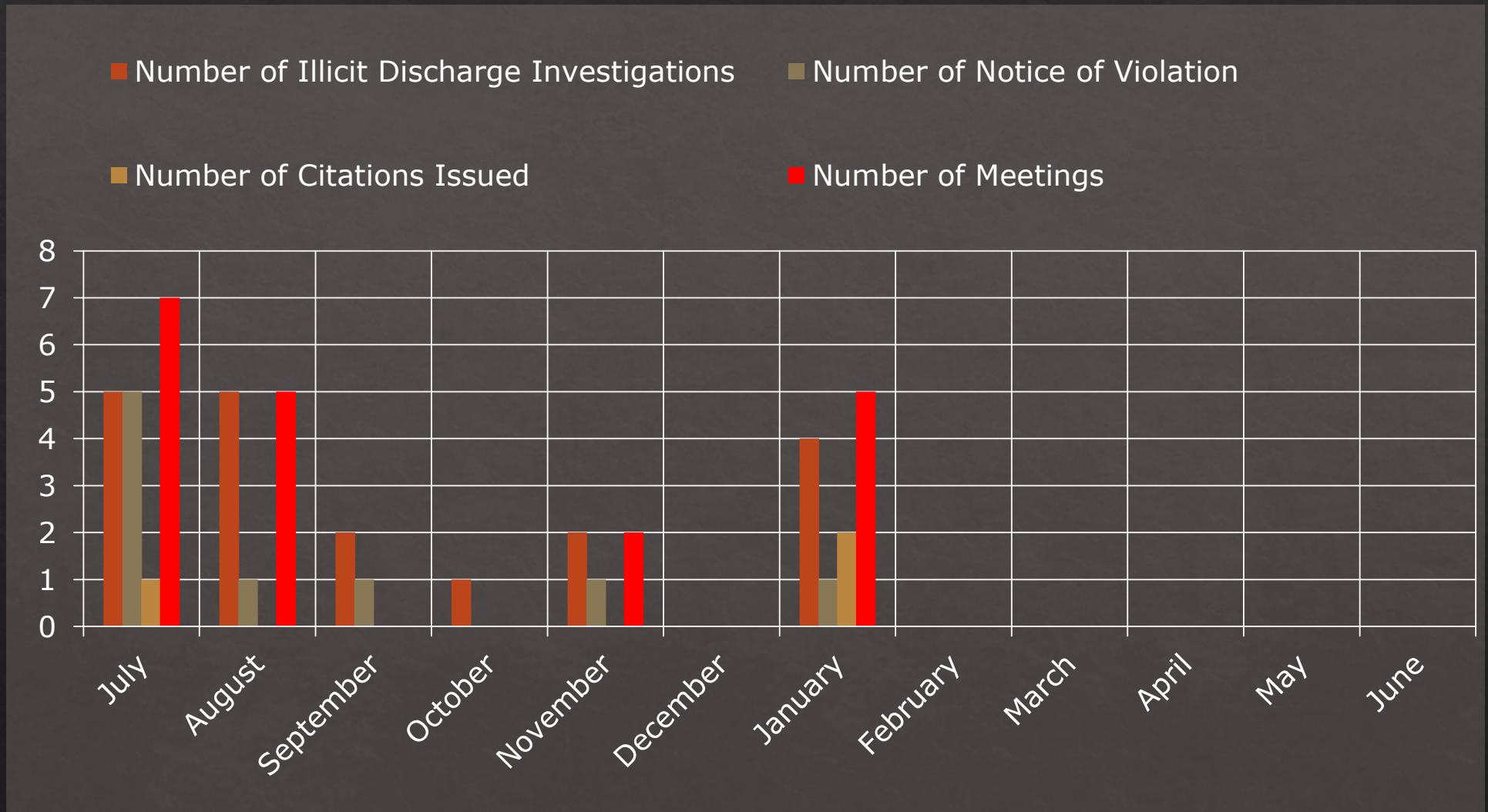
### MICROBIAL SOURCE TRACKING (MST) LOCATIONS

SAMPLING RESULTS FOR THE PREVIOUS REPORTING PERIOD



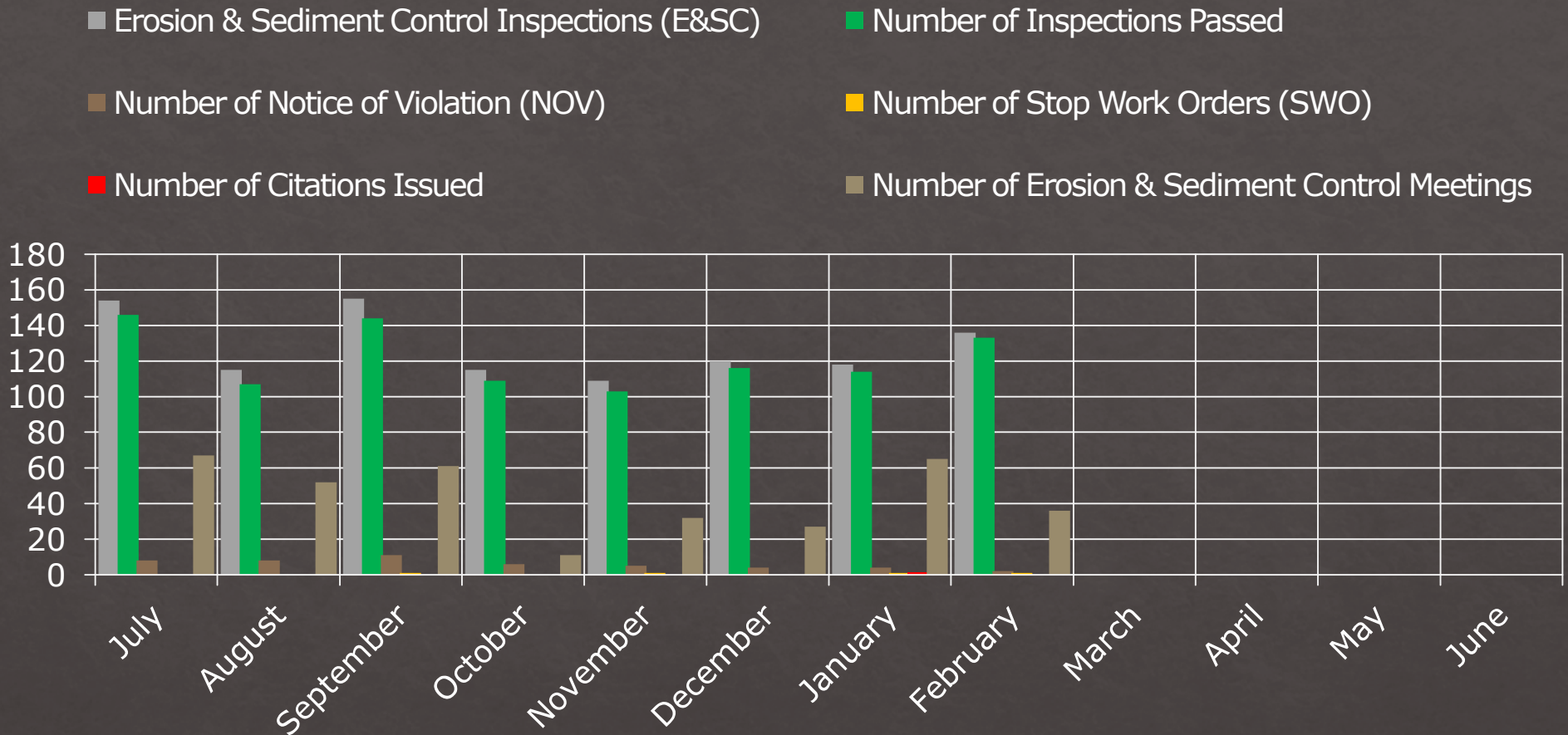
Updated Date: 2/12/2026

# MS4 Minimum Control Measure #3 – IDDE: Illicit Discharge Investigations



	Number of Illicit Discharge Investigations	Number of Notices of Violation Issued	Number of Citations Issued	Number of Meetings
FY 2026 YTD Totals	19	9	3	19

# MS4 Minimum Control Measure #4 - Construction Site Stormwater Runoff Control



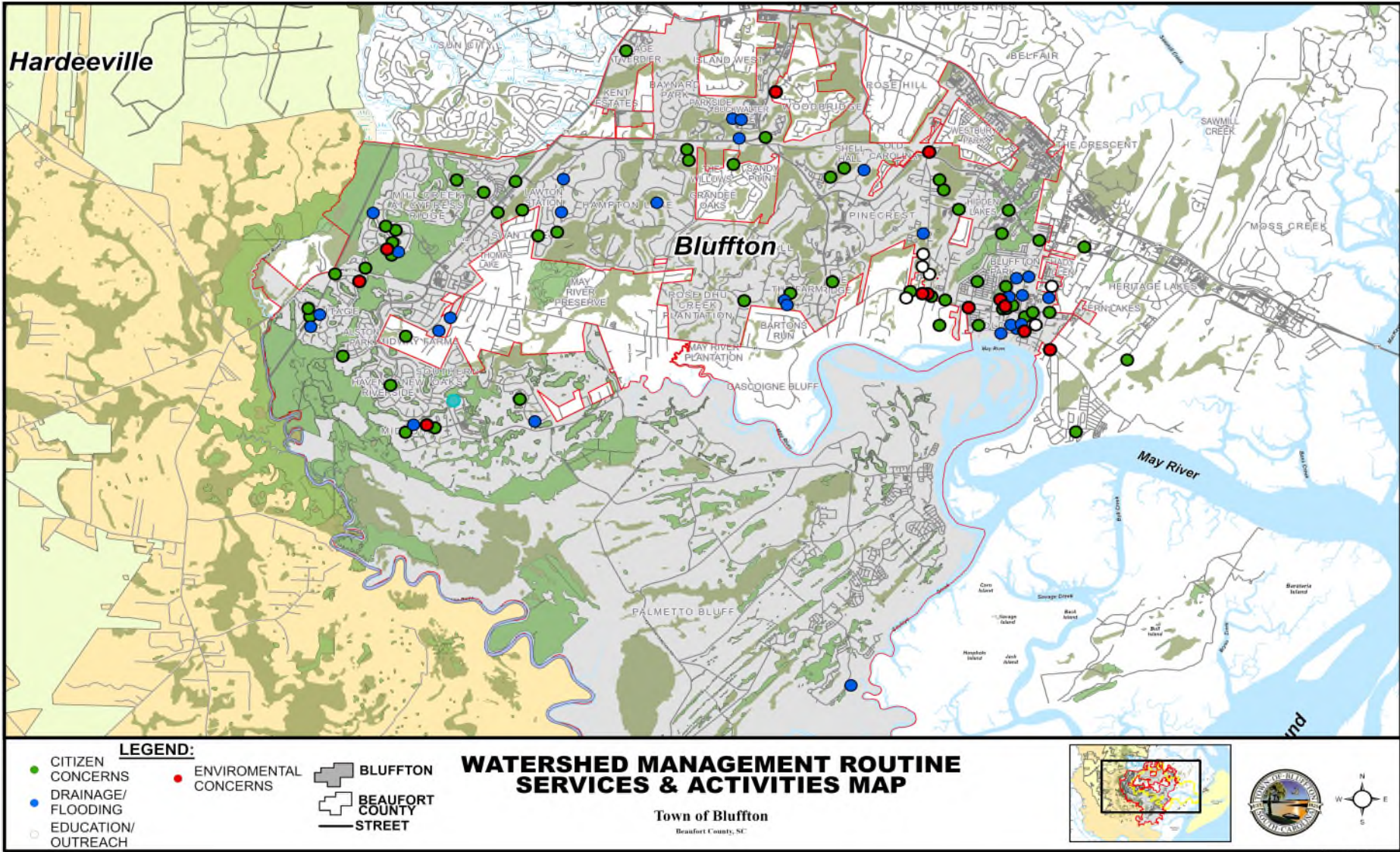
	Number of Sediment & Erosion Control Inspections	Number of Inspections Passed	Number of NOV's Issued	Number of SWO Issued	Number of Citations Issued	Number of E&SC Meetings
FY 2026 YTD Totals	1,022	972	48	4	1	351

# MS4 Minimum Control Measure #5 Stormwater Plan Review & Related Activity



	Plan Reviews MS4 Reviews	SoLoCo Plan Reviews	Sureties	CCC Inspections	Pre-Construction Meetings	Pre-Clearing Inspections	Post Construction BMP Inspections	Pre-Application Meetings	Total Plan Review Hours
FY 2026 YTD	252	47	19	42	6	5	68	30	248.50 Hrs.

# Citizen Request for Watershed Mngt. Services & Activities Map



Number of Citizen Requests Investigated

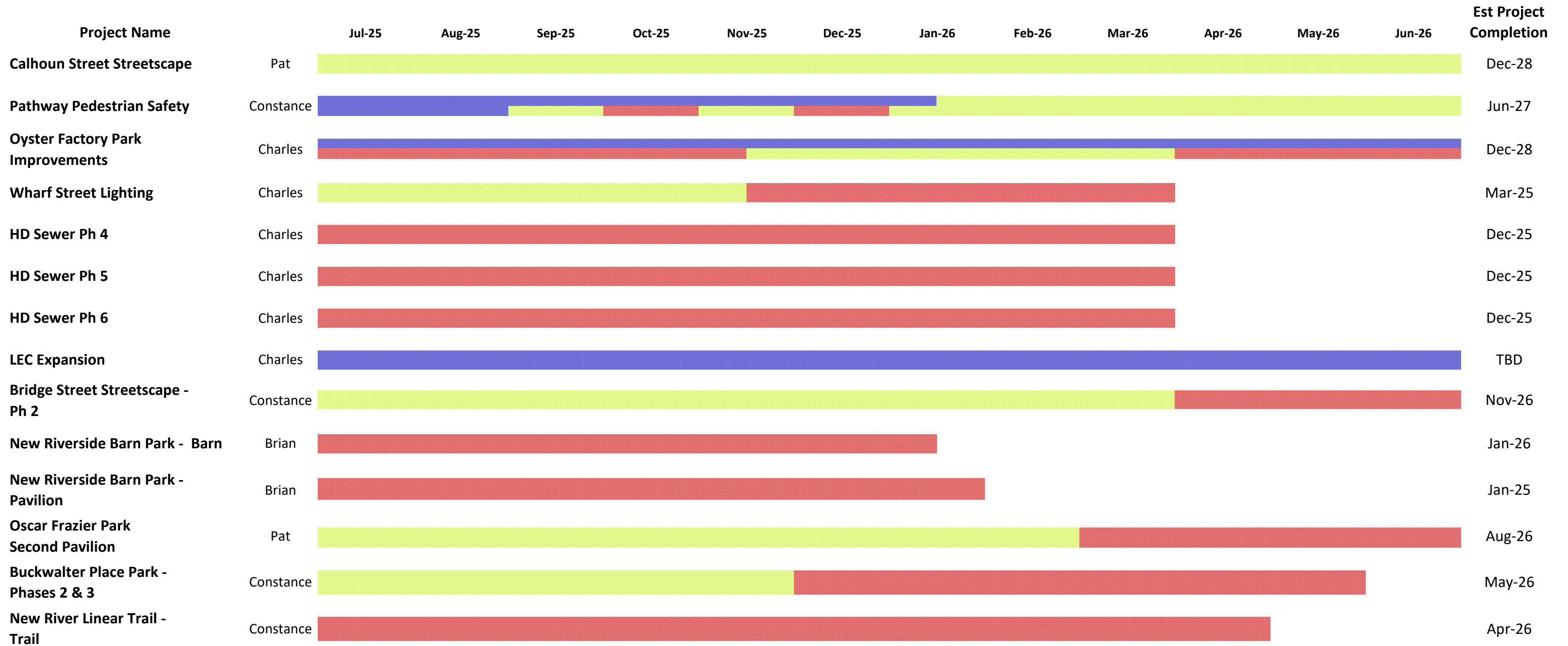
Number of Meetings

FY 2026 YTD Totals

69

38

# FY26 CIP Master Project Schedule



Planning\*
  Design\*\*
  Construction\*\*\*

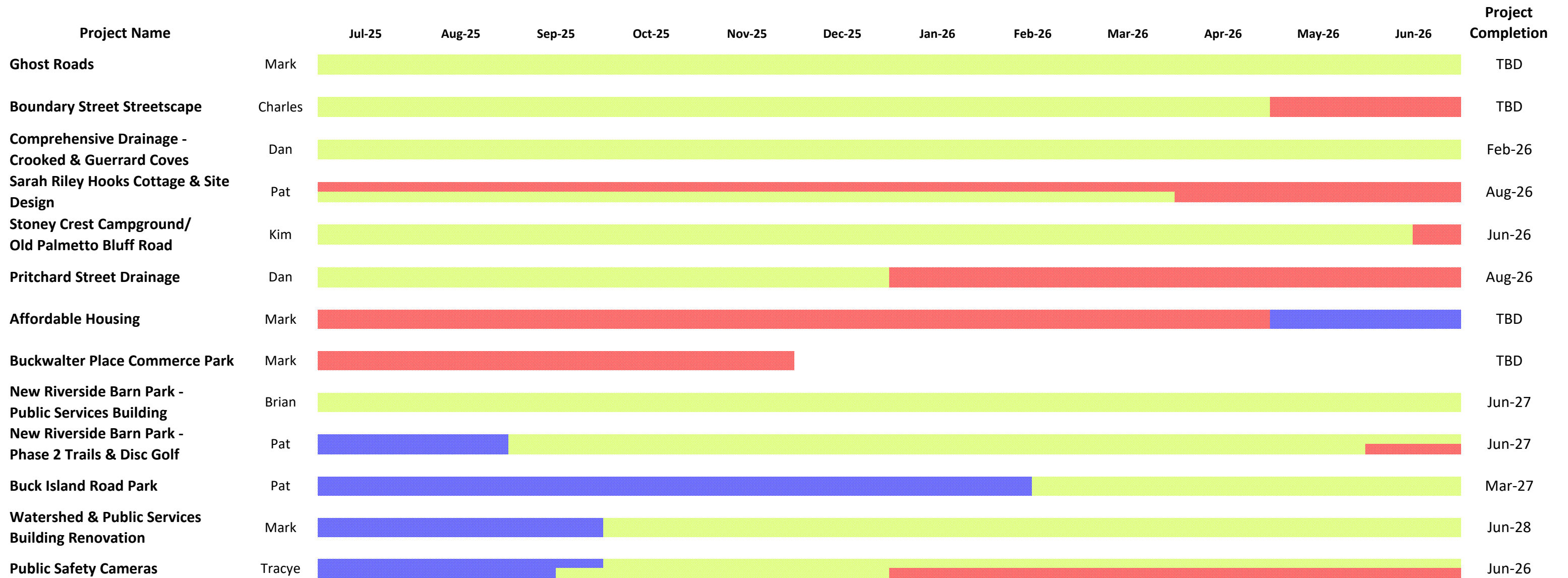
*\*Planning includes surveying, environmental and cultural investigations, initial master planning and other due diligence reports and studies.*

*\*\*Design includes conceptual, preliminary and final design, construction documents, permitting, easement acquisition and bidding.*

*\*\*\*Construction includes contracts, geotechnical reports, all horizontal and vertical construction, construction administration, as-builts and final closeout.*

\*SUBJECT TO CHANGE\*

# FY26 CIP Master Project Schedule



Planning\*
  Design\*\*
  Construction\*\*\*

*\*Planning includes surveying, environmental and cultural investigations, initial master planning and other due diligence reports and studies.*

*\*\*Design includes conceptual, preliminary and final design, construction documents, permitting, easement acquisition and bidding.*

*\*\*\*Construction includes contracts, geotechnical reports, all horizontal and vertical construction, construction administration, as-builts and final closeout.*

\*SUBJECT TO CHANGE\*