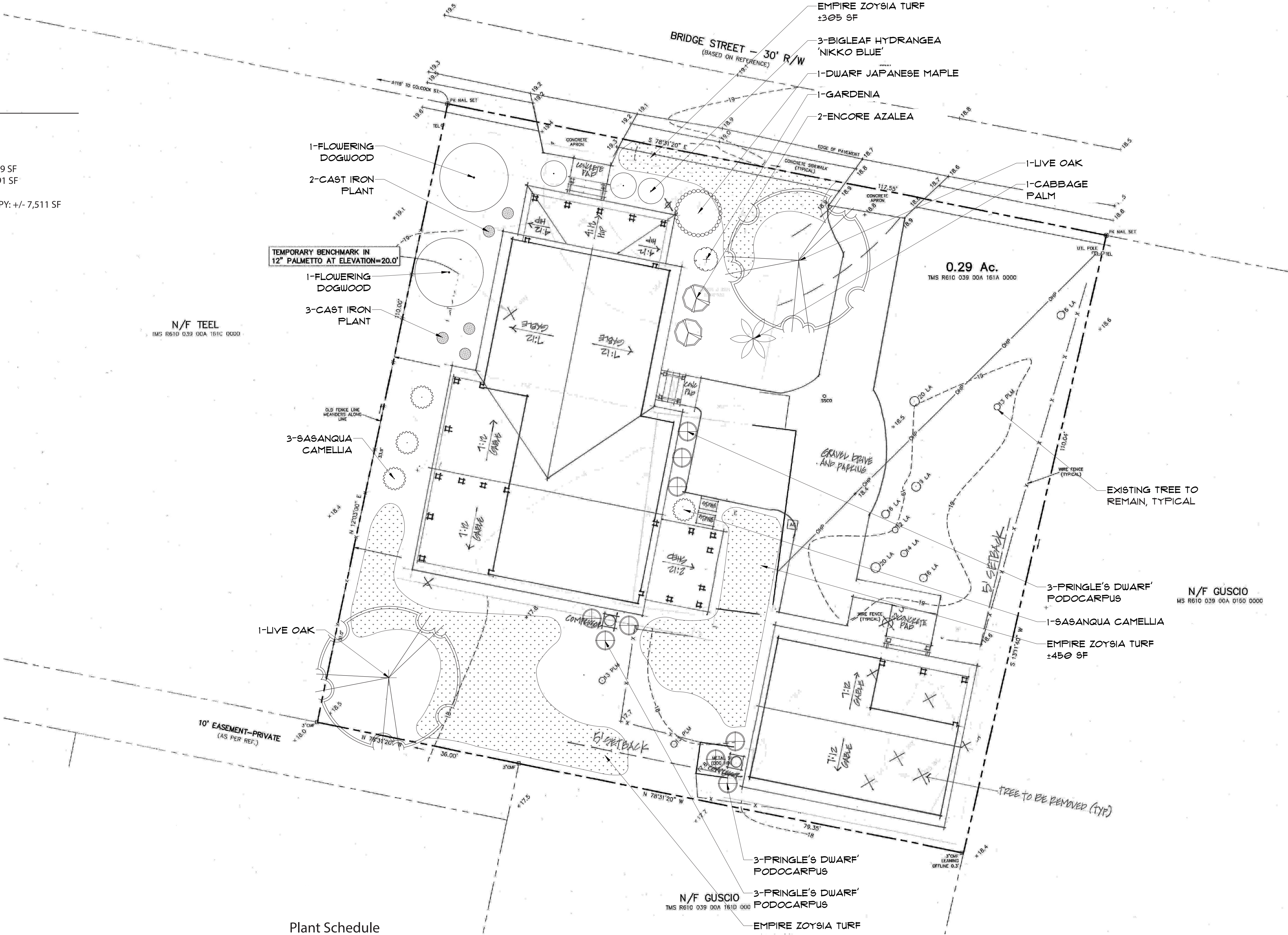


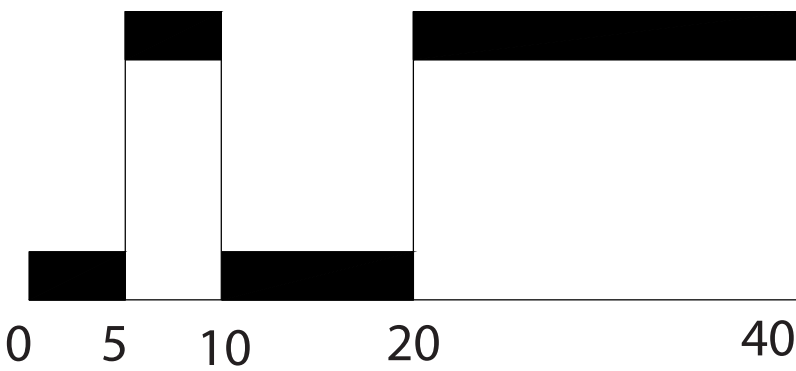
TREE CANOPY SUMMARY

TOTAL LOT ACREAGE: 12,632 SF
TOTAL ROOF SF: 3,727 SF
12,632 - 3,727 = 8,905 SF
8,905 SF X 75% = 6,679 SF
TOTAL REQUIRED TREE CANOPY COVERAGE @ 75% = +/- 6,679 SF
TOTAL EXISTING ON SITE & ADJACENT TREE CANOPY: +/- 3,691 SF
TOTAL PROPOSED TREE CANOPY: +/- 3,820 SF
TOTAL EXISTING & ADJACENT TREE & PROPOSED TREE CANOPY: +/- 7,511 SF



Plant Schedule

Quantity	Common Name	Botanical Name	Container	Height	Spread	Cal/Spacing	Notes
Tree							
1	Cabbage Palm	Sabal Pameffo		10'-12'			
1	Dwarf Japanese Maple	Acer palmatum compacta	15 gal.	5'-6'			
2	Flowering Dogwood	Cornus florida	15 gal.	5'-7'			
2	Live Oak	Quercus virginiana		12' Min		2.5" Cal.	
Shrub							
3	Bigleaf Hydrangea 'Nikko Blue'	Hydrangea macrophylla 'Nikko Blue'	3 gal.	18"-24"	14"-16"		
5	Cast Iron Plant	Aspidistra elatior	1 gal.	18-24"	6"		
2	Encore Azalea	Rhododendron Encore	3 gal.	1.25'-1.5'	1'-1.25'		
1	Gardenia	Gardenia jasminoides	3 gal.	1.5'-1.75'	1.25'-1.5'		
9	Pringle's Dwarf Podocarpus	Podocarpus macrophyllus 'Pringle's Dwarf'	7 gal.	2'-3'	1.5'-1.75'		
4	Sasanqua camellia	Camellia sasanqua	7 gal.	2.5'-3'	1.75'-2'		
Vines/Groundcover							
2,500 SF +/-	Pinestraw Mulch	Pinestraw Mulch in Disturbed Areas					
558 SF +/-	Empire Zoysia Turf	Empire Zoysia Turf					



Scale: 1" = 10'



Landscape Plan
for
Sara Kelly
77 Bridge Street
Bluffton, SC
November 8, 2023