

STATE OF SOUTH CAROLINA)
)
)
COUNTY OF BEAUFORT)

AMENDMENT TO EASEMENT
Cross-reference: Book 4301, Page 2505-2507

Amendment to Easement (“Amendment”) is made and entered into as of the ____ day of _____, 2024 (“Effective Date”) by and between The Town of Bluffton, a South Carolina municipal corporation, (“Grantor”) and DOMINIOIN ENERGY SOUTH CAROLINA, INC., a South Carolina corporation, a South Carolina corporation (“Grantee”). Grantor and Grantee may be referred to jointly herein as the “Parties” and individually as a “Party.”

RECITALS

- A. Grantee and The Town of Bluffton, a South Carolina municipal corporation entered into that certain Easement Agreement (“Easement”) dated January 4, 2024 and recorded in the Beaufort County Register of Deeds on January 8, 2024 in Book 4301/Page 2505-2507.
- B. Per the Easement #904546, “...the Grantee’s facilities identified as “SECTION OF LINE COVERED BY EASEMENT” being more fully shown on Dominion Energy South Carolina drawing #84940, attached to and made a part of, as Exhibit “A”.
- C. Grantor and Grantee now desire to revise the Easement location by replacing Exhibit “A” with Exhibit “A1”, attached to this Amendment, identifying the new easement space.

NOW THEREFORE, for good and valuable consideration, the sufficiency of which the Parties hereby acknowledge, the Parties agree as follows.

AGREEMENT

- 1. The recitals set forth above are an integral part of this Amendment. All defined terms used in this Amendment shall have the same meaning as in the Easement unless otherwise specified.
- 2. Exhibit “A1”, attached to this Amendment, shall be added to the Easement, as a replacement for Exhibit “A”, and shall, by virtue of this Amendment, be treated as an integral part of the Easement.
- 3. Except as expressly set forth herein in the Amendment, the terms of the Easement shall remain intact and binding upon the Parties. No additional changes, modifications or amendments to the Easement shall be effective or binding unless any such amendment is reduced to writing and signed by both Grantor and Grantee.

IN WITNESS WHEREOF, Grantor and Grantee have entered into this Amendment as of the date first above listed.

WITNESSES:

The Town of Bluffton, a South Carolina municipal corporation

(Witness #1)

By:_____

Stephen Steese, as Town Manager

(Witness #2)

Amended Easement # 905715

ACKNOWLEDGMENT

STATE OF SOUTH CAROLINA

COUNTY OF **Beaufort**

The foregoing instrument was acknowledged before me, the undersigned Notary, and I do hereby certify that the within named **Stephen Steese, as Town Manager of The Town of Bluffton, a South Carolina municipal corporation** personally appeared before me this day and that the above named acknowledged the due execution of the foregoing instrument.

Sworn to before me this _____ day of _____, **2024**

Signature of Notary Public State of SC

My commission expires: _____

Print Name of Notary Public

**RIGHT OF WAY GRANT TO
DOMINION ENERGY SOUTH CAROLINA, INC.**

Line: **Hardeeville to Pritchardville Tap - Distribution U**

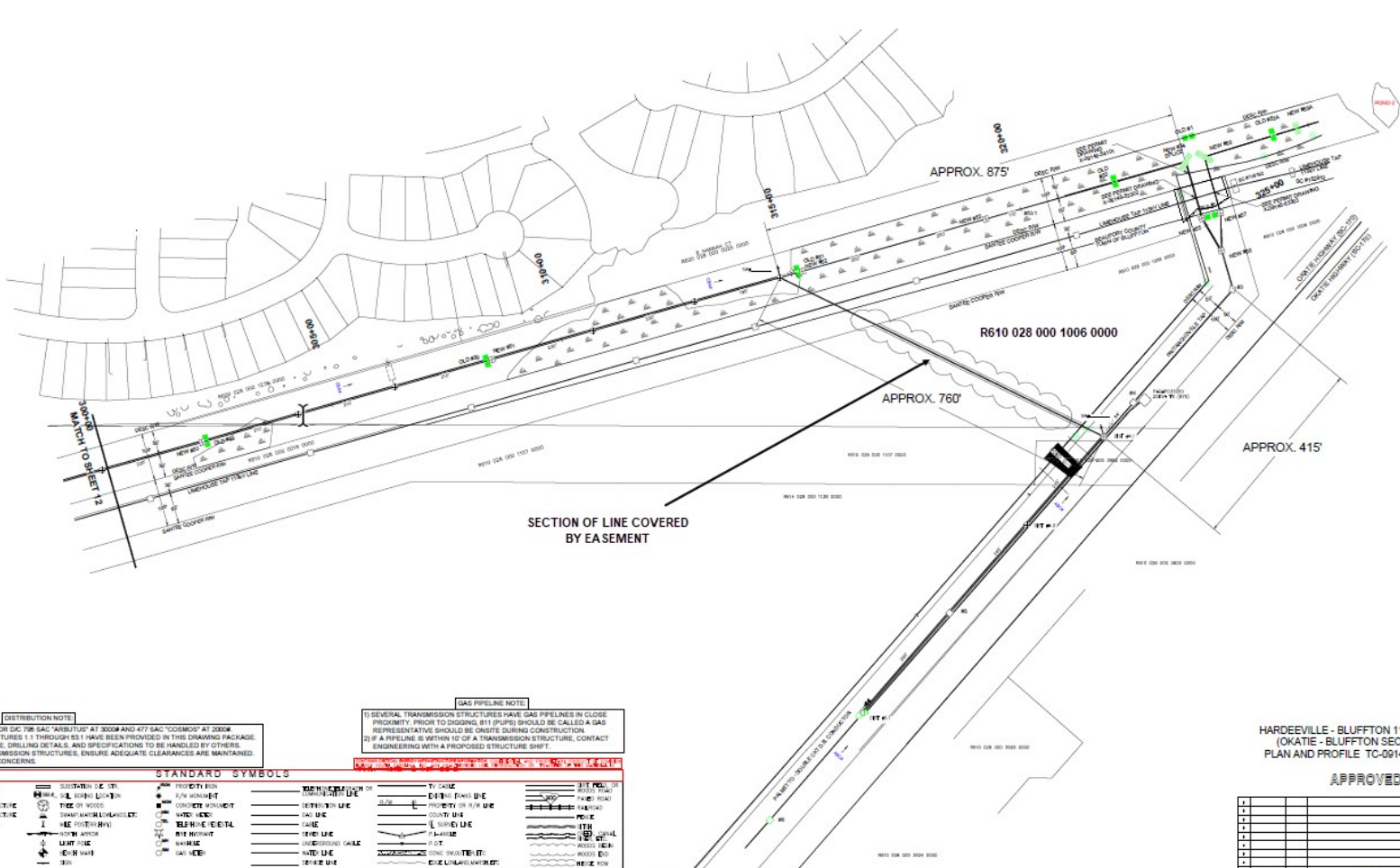
County: **Beaufort**

R/W File Number: **26464**

Grantor(s): **The Town of Bluffton, a South Carolina municipal corporation**

Return to: DESC, C/O Right of Way Dept., 81 May River Road, Bluffton, SC 29910

EXHIBIT "A1"



DISTRIBUTION NOTE:
 DESIGNED FOR 69.0KV "MINIMUM" AT 300M AND 47.7KV "COSMOID" AT 200M FOR STRUCTURES 1.1 THROUGH 53.1 HAVE BEEN PROVIDED IN THIS DRAWING PACKAGE.
 1. HAZARDOUS DRILLING DETAILS AND SPECIFICATIONS TO BE HANDLED BY OTHERS.
 NEW TRANSMISSION STRUCTURES, ENSURE ADEQUATE CLEARANCES ARE MAINTAINED. STIONS OR CONCERNS.

GAS PIPELINE NOTE:
 1) SEVERAL TRANSMISSION STRUCTURES HAVE GAS PIPELINES IN CLOSE PROXIMITY. PRIOR TO DESIGNING, B11 (PUPS) SHOULD BE CALLED A GAS REPRESENTATIVE SHOULD BE ON SITE DURING CONSTRUCTION.
 2) IF A PIPELINE IS WITHIN 10' OF A TRANSMISSION STRUCTURE, CONTACT ENGINEERING WITH A PROPOSED STRUCTURE SHIFT.

STANDARD SYMBOLS		SYMBOLS FOR USE	
1. TRANSMISSION STRUCTURE	2. SUBSTATION DEVICES	1. TRANSMISSION LINE	1. TYPICAL
3. TRANSMISSION LINE	3. TYPE OF WOODS	2. DISTRIBUTION LINE	2. DITCH
4. TRANSMISSION LINE	4. CONCRETE FOUNDATION	3. CABLE	3. CONDUIT
5. TRANSMISSION LINE	5. TELEPHONE CABLE	4. CABLE	4. SURFACE
6. TRANSMISSION LINE	6. WATER MAIN	5. CABLE	5. UNDERGROUND
7. TRANSMISSION LINE	7. GAS MAIN	6. CABLE	6. UNDERGROUND
8. TRANSMISSION LINE	8. FIRE MAIN	7. CABLE	7. UNDERGROUND
9. TRANSMISSION LINE	9. FIBER OPTIC	8. CABLE	8. UNDERGROUND
10. TRANSMISSION LINE	10. POWER POLE	9. CABLE	9. UNDERGROUND
11. TRANSMISSION LINE	11. TELEPHONE POLE	10. CABLE	10. UNDERGROUND
12. TRANSMISSION LINE	12. WATER POLE	11. CABLE	11. UNDERGROUND
13. TRANSMISSION LINE	13. GAS POLE	12. CABLE	12. UNDERGROUND
14. TRANSMISSION LINE	14. FIRE POLE	13. CABLE	13. UNDERGROUND
15. TRANSMISSION LINE	15. FIBER OPTIC POLE	14. CABLE	14. UNDERGROUND
16. TRANSMISSION LINE	16. POWER POLE	15. CABLE	15. UNDERGROUND
17. TRANSMISSION LINE	17. TELEPHONE POLE	16. CABLE	16. UNDERGROUND
18. TRANSMISSION LINE	18. WATER POLE	17. CABLE	17. UNDERGROUND
19. TRANSMISSION LINE	19. GAS POLE	18. CABLE	18. UNDERGROUND
20. TRANSMISSION LINE	20. FIRE POLE	19. CABLE	19. UNDERGROUND
21. TRANSMISSION LINE	21. FIBER OPTIC POLE	20. CABLE	20. UNDERGROUND
22. TRANSMISSION LINE	22. POWER POLE	21. CABLE	21. UNDERGROUND
23. TRANSMISSION LINE	23. TELEPHONE POLE	22. CABLE	22. UNDERGROUND
24. TRANSMISSION LINE	24. WATER POLE	23. CABLE	23. UNDERGROUND
25. TRANSMISSION LINE	25. GAS POLE	24. CABLE	24. UNDERGROUND
26. TRANSMISSION LINE	26. FIRE POLE	25. CABLE	25. UNDERGROUND
27. TRANSMISSION LINE	27. FIBER OPTIC POLE	26. CABLE	26. UNDERGROUND
28. TRANSMISSION LINE	28. POWER POLE	27. CABLE	27. UNDERGROUND
29. TRANSMISSION LINE	29. TELEPHONE POLE	28. CABLE	28. UNDERGROUND
30. TRANSMISSION LINE	30. WATER POLE	29. CABLE	29. UNDERGROUND
31. TRANSMISSION LINE	31. GAS POLE	30. CABLE	30. UNDERGROUND
32. TRANSMISSION LINE	32. FIRE POLE	31. CABLE	31. UNDERGROUND
33. TRANSMISSION LINE	33. FIBER OPTIC POLE	32. CABLE	32. UNDERGROUND
34. TRANSMISSION LINE	34. POWER POLE	33. CABLE	33. UNDERGROUND
35. TRANSMISSION LINE	35. TELEPHONE POLE	34. CABLE	34. UNDERGROUND
36. TRANSMISSION LINE	36. WATER POLE	35. CABLE	35. UNDERGROUND
37. TRANSMISSION LINE	37. GAS POLE	36. CABLE	36. UNDERGROUND
38. TRANSMISSION LINE	38. FIRE POLE	37. CABLE	37. UNDERGROUND
39. TRANSMISSION LINE	39. FIBER OPTIC POLE	38. CABLE	38. UNDERGROUND
40. TRANSMISSION LINE	40. POWER POLE	39. CABLE	39. UNDERGROUND
41. TRANSMISSION LINE	41. TELEPHONE POLE	40. CABLE	40. UNDERGROUND
42. TRANSMISSION LINE	42. WATER POLE	41. CABLE	41. UNDERGROUND
43. TRANSMISSION LINE	43. GAS POLE	42. CABLE	42. UNDERGROUND
44. TRANSMISSION LINE	44. FIRE POLE	43. CABLE	43. UNDERGROUND
45. TRANSMISSION LINE	45. FIBER OPTIC POLE	44. CABLE	44. UNDERGROUND
46. TRANSMISSION LINE	46. POWER POLE	45. CABLE	45. UNDERGROUND
47. TRANSMISSION LINE	47. TELEPHONE POLE	46. CABLE	46. UNDERGROUND
48. TRANSMISSION LINE	48. WATER POLE	47. CABLE	47. UNDERGROUND
49. TRANSMISSION LINE	49. GAS POLE	48. CABLE	48. UNDERGROUND
50. TRANSMISSION LINE	50. FIRE POLE	49. CABLE	49. UNDERGROUND
51. TRANSMISSION LINE	51. FIBER OPTIC POLE	50. CABLE	50. UNDERGROUND
52. TRANSMISSION LINE	52. POWER POLE	51. CABLE	51. UNDERGROUND
53. TRANSMISSION LINE	53. TELEPHONE POLE	52. CABLE	52. UNDERGROUND
54. TRANSMISSION LINE	54. WATER POLE	53. CABLE	53. UNDERGROUND
55. TRANSMISSION LINE	55. GAS POLE	54. CABLE	54. UNDERGROUND
56. TRANSMISSION LINE	56. FIRE POLE	55. CABLE	55. UNDERGROUND
57. TRANSMISSION LINE	57. FIBER OPTIC POLE	56. CABLE	56. UNDERGROUND
58. TRANSMISSION LINE	58. POWER POLE	57. CABLE	57. UNDERGROUND
59. TRANSMISSION LINE	59. TELEPHONE POLE	58. CABLE	58. UNDERGROUND
60. TRANSMISSION LINE	60. WATER POLE	59. CABLE	59. UNDERGROUND
61. TRANSMISSION LINE	61. GAS POLE	60. CABLE	60. UNDERGROUND
62. TRANSMISSION LINE	62. FIRE POLE	61. CABLE	61. UNDERGROUND
63. TRANSMISSION LINE	63. FIBER OPTIC POLE	62. CABLE	62. UNDERGROUND
64. TRANSMISSION LINE	64. POWER POLE	63. CABLE	63. UNDERGROUND
65. TRANSMISSION LINE	65. TELEPHONE POLE	64. CABLE	64. UNDERGROUND
66. TRANSMISSION LINE	66. WATER POLE	65. CABLE	65. UNDERGROUND
67. TRANSMISSION LINE	67. GAS POLE	66. CABLE	66. UNDERGROUND
68. TRANSMISSION LINE	68. FIRE POLE	67. CABLE	67. UNDERGROUND
69. TRANSMISSION LINE	69. FIBER OPTIC POLE	68. CABLE	68. UNDERGROUND
70. TRANSMISSION LINE	70. POWER POLE	69. CABLE	69. UNDERGROUND
71. TRANSMISSION LINE	71. TELEPHONE POLE	70. CABLE	70. UNDERGROUND
72. TRANSMISSION LINE	72. WATER POLE	71. CABLE	71. UNDERGROUND
73. TRANSMISSION LINE	73. GAS POLE	72. CABLE	72. UNDERGROUND
74. TRANSMISSION LINE	74. FIRE POLE	73. CABLE	73. UNDERGROUND
75. TRANSMISSION LINE	75. FIBER OPTIC POLE	74. CABLE	74. UNDERGROUND
76. TRANSMISSION LINE	76. POWER POLE	75. CABLE	75. UNDERGROUND
77. TRANSMISSION LINE	77. TELEPHONE POLE	76. CABLE	76. UNDERGROUND
78. TRANSMISSION LINE	78. WATER POLE	77. CABLE	77. UNDERGROUND
79. TRANSMISSION LINE	79. GAS POLE	78. CABLE	78. UNDERGROUND
80. TRANSMISSION LINE	80. FIRE POLE	79. CABLE	79. UNDERGROUND
81. TRANSMISSION LINE	81. FIBER OPTIC POLE	80. CABLE	80. UNDERGROUND
82. TRANSMISSION LINE	82. POWER POLE	81. CABLE	81. UNDERGROUND
83. TRANSMISSION LINE	83. TELEPHONE POLE	82. CABLE	82. UNDERGROUND
84. TRANSMISSION LINE	84. WATER POLE	83. CABLE	83. UNDERGROUND
85. TRANSMISSION LINE	85. GAS POLE	84. CABLE	84. UNDERGROUND
86. TRANSMISSION LINE	86. FIRE POLE	85. CABLE	85. UNDERGROUND
87. TRANSMISSION LINE	87. FIBER OPTIC POLE	86. CABLE	86. UNDERGROUND
88. TRANSMISSION LINE	88. POWER POLE	87. CABLE	87. UNDERGROUND
89. TRANSMISSION LINE	89. TELEPHONE POLE	88. CABLE	88. UNDERGROUND
90. TRANSMISSION LINE	90. WATER POLE	89. CABLE	89. UNDERGROUND
91. TRANSMISSION LINE	91. GAS POLE	90. CABLE	90. UNDERGROUND
92. TRANSMISSION LINE	92. FIRE POLE	91. CABLE	91. UNDERGROUND
93. TRANSMISSION LINE	93. FIBER OPTIC POLE	92. CABLE	92. UNDERGROUND
94. TRANSMISSION LINE	94. POWER POLE	93. CABLE	93. UNDERGROUND
95. TRANSMISSION LINE	95. TELEPHONE POLE	94. CABLE	94. UNDERGROUND
96. TRANSMISSION LINE	96. WATER POLE	95. CABLE	95. UNDERGROUND
97. TRANSMISSION LINE	97. GAS POLE	96. CABLE	96. UNDERGROUND
98. TRANSMISSION LINE	98. FIRE POLE	97. CABLE	97. UNDERGROUND
99. TRANSMISSION LINE	99. FIBER OPTIC POLE	98. CABLE	98. UNDERGROUND
100. TRANSMISSION LINE	100. POWER POLE	99. CABLE	99. UNDERGROUND

DOMINION ENERGY SOUTH CAROLINA, INC. ELECTRIC DISTRIBUTION SYMBOLS	
1. TRANSMISSION LINE	1. TRANSMISSION LINE
2. DISTRIBUTION LINE	2. DISTRIBUTION LINE
3. CABLE	3. CABLE
4. CONDUIT	4. CONDUIT
5. SURFACE	5. SURFACE
6. UNDERGROUND	6. UNDERGROUND
7. UNDERGROUND	7. UNDERGROUND
8. UNDERGROUND	8. UNDERGROUND
9. UNDERGROUND	9. UNDERGROUND
10. UNDERGROUND	10. UNDERGROUND
11. UNDERGROUND	11. UNDERGROUND
12. UNDERGROUND	12. UNDERGROUND
13. UNDERGROUND	13. UNDERGROUND
14. UNDERGROUND	14. UNDERGROUND
15. UNDERGROUND	15. UNDERGROUND
16. UNDERGROUND	16. UNDERGROUND
17. UNDERGROUND	17. UNDERGROUND
18. UNDERGROUND	18. UNDERGROUND
19. UNDERGROUND	19. UNDERGROUND
20. UNDERGROUND	20. UNDERGROUND
21. UNDERGROUND	21. UNDERGROUND
22. UNDERGROUND	22. UNDERGROUND
23. UNDERGROUND	23. UNDERGROUND
24. UNDERGROUND	24. UNDERGROUND
25. UNDERGROUND	25. UNDERGROUND
26. UNDERGROUND	26. UNDERGROUND
27. UNDERGROUND	27. UNDERGROUND
28. UNDERGROUND	28. UNDERGROUND
29. UNDERGROUND	29. UNDERGROUND
30. UNDERGROUND	30. UNDERGROUND
31. UNDERGROUND	31. UNDERGROUND
32. UNDERGROUND	32. UNDERGROUND
33. UNDERGROUND	33. UNDERGROUND
34. UNDERGROUND	34. UNDERGROUND
35. UNDERGROUND	35. UNDERGROUND
36. UNDERGROUND	36. UNDERGROUND
37. UNDERGROUND	37. UNDERGROUND
38. UNDERGROUND	38. UNDERGROUND
39. UNDERGROUND	39. UNDERGROUND
40. UNDERGROUND	40. UNDERGROUND
41. UNDERGROUND	41. UNDERGROUND
42. UNDERGROUND	42. UNDERGROUND
43. UNDERGROUND	43. UNDERGROUND
44. UNDERGROUND	44. UNDERGROUND
45. UNDERGROUND	45. UNDERGROUND
46. UNDERGROUND	46. UNDERGROUND
47. UNDERGROUND	47. UNDERGROUND
48. UNDERGROUND	48. UNDERGROUND
49. UNDERGROUND	49. UNDERGROUND
50. UNDERGROUND	50. UNDERGROUND
51. UNDERGROUND	51. UNDERGROUND
52. UNDERGROUND	52. UNDERGROUND
53. UNDERGROUND	53. UNDERGROUND
54. UNDERGROUND	54. UNDERGROUND
55. UNDERGROUND	55. UNDERGROUND
56. UNDERGROUND	56. UNDERGROUND
57. UNDERGROUND	57. UNDERGROUND
58. UNDERGROUND	58. UNDERGROUND
59. UNDERGROUND	59. UNDERGROUND
60. UNDERGROUND	60. UNDERGROUND
61. UNDERGROUND	61. UNDERGROUND
62. UNDERGROUND	62. UNDERGROUND
63. UNDERGROUND	63. UNDERGROUND
64. UNDERGROUND	64. UNDERGROUND
65. UNDERGROUND	65. UNDERGROUND
66. UNDERGROUND	66. UNDERGROUND
67. UNDERGROUND	67. UNDERGROUND
68. UNDERGROUND	68. UNDERGROUND
69. UNDERGROUND	69. UNDERGROUND
70. UNDERGROUND	70. UNDERGROUND
71. UNDERGROUND	71. UNDERGROUND
72. UNDERGROUND	72. UNDERGROUND
73. UNDERGROUND	73. UNDERGROUND
74. UNDERGROUND	74. UNDERGROUND
75. UNDERGROUND	75. UNDERGROUND
76. UNDERGROUND	76. UNDERGROUND
77. UNDERGROUND	77. UNDERGROUND
78. UNDERGROUND	78. UNDERGROUND
79. UNDERGROUND	79. UNDERGROUND
80. UNDERGROUND	80. UNDERGROUND
81. UNDERGROUND	81. UNDERGROUND
82. UNDERGROUND	82. UNDERGROUND
83. UNDERGROUND	83. UNDERGROUND
84. UNDERGROUND	84. UNDERGROUND
85. UNDERGROUND	85. UNDERGROUND
86. UNDERGROUND	86. UNDERGROUND
87. UNDERGROUND	87. UNDERGROUND
88. UNDERGROUND	88. UNDERGROUND
89. UNDERGROUND	89. UNDERGROUND
90. UNDERGROUND	90. UNDERGROUND
91. UNDERGROUND	91. UNDERGROUND
92. UNDERGROUND	92. UNDERGROUND
93. UNDERGROUND	93. UNDERGROUND
94. UNDERGROUND	94. UNDERGROUND
95. UNDERGROUND	95. UNDERGROUND
96. UNDERGROUND	96. UNDERGROUND
97. UNDERGROUND	97. UNDERGROUND
98. UNDERGROUND	98. UNDERGROUND
99. UNDERGROUND	99. UNDERGROUND
100. UNDERGROUND	100. UNDERGROUND

HARDEEVILLE - BLUFFTON 115KV LINE (OKATIE - BLUFFTON SECTION) PLAN AND PROFILE TC-09148-21013

APPROVED

DOMINION ENERGY SOUTH CAROLINA, INC.	
TITLE	HARDEEVILLE TO BLUFFTON 115KV LINE UNDERBUILD
DETAIL	DISTRIBUTION UNDERBUILD STA 300+00 TO STA 500+00
SUB	HARDEEVILLE SUB #222 / BLUFFTON SUB #288 - 23.0KV
DATE	08/14/2010
SCALE	1"=100' H / 1"=20' V
NO.	D-84940
DATE	06/13/10

PLAN "SAFETY" INTO EVERY JOB

ELECTRONIC DRAWING—DO NOT REVISE MANUALLY