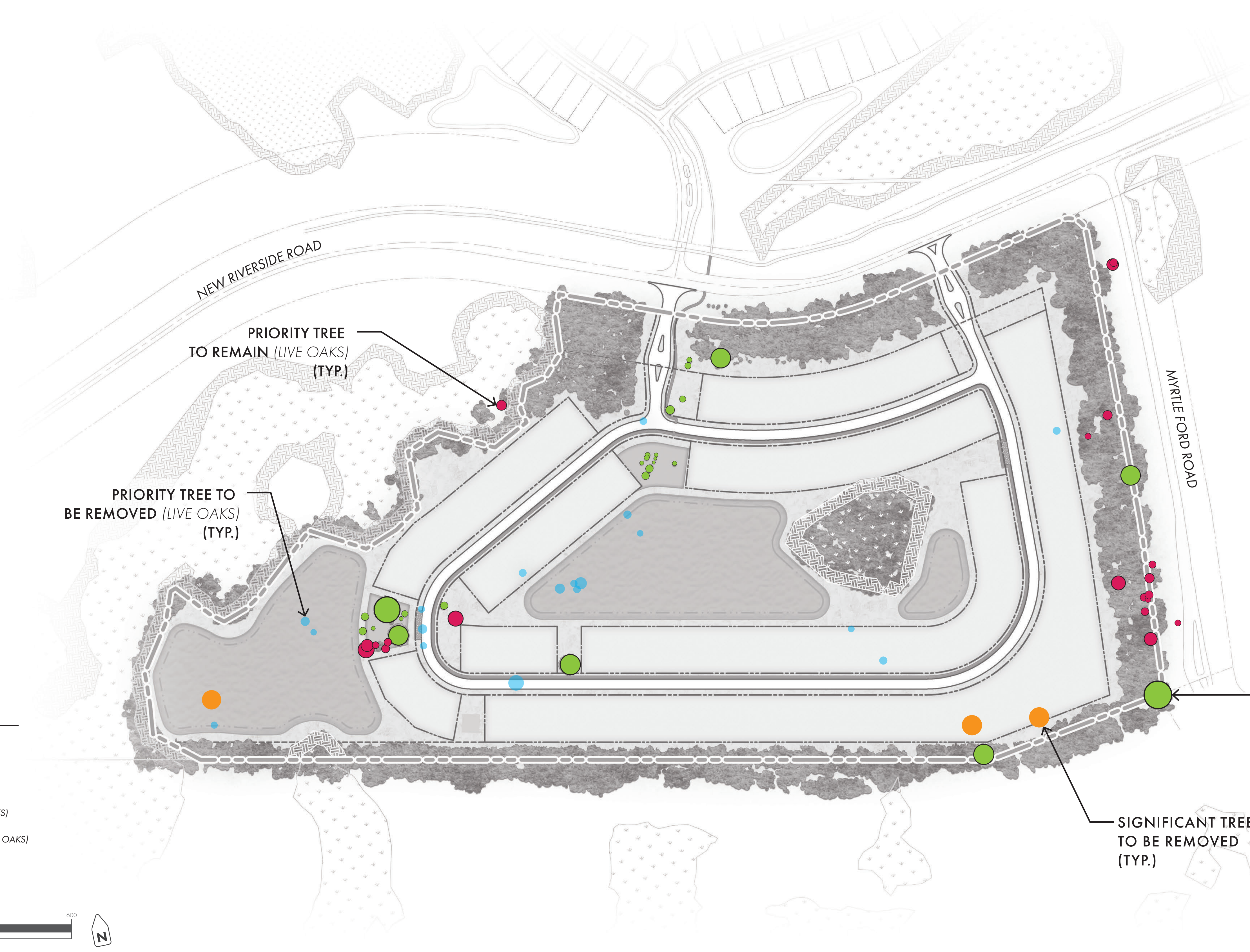


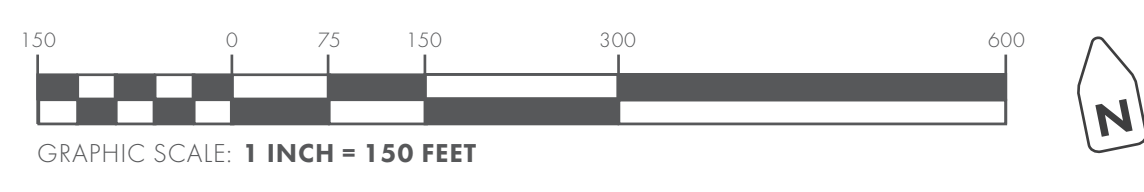
THIS GRAPHIC ILLUSTRATES A GENERAL PLAN OF THE DEVELOPMENT, DOES NOT LIMIT OR BIND THE OWNER/DEVELOPER, AND IS SUBJECT TO CHANGE AND REVISION. DIMENSIONS, BOUNDARIES, AND IMPROVEMENTS ARE FOR ILLUSTRATIVE PURPOSES ONLY.

THE OWNER/DEVELOPER RESERVES THE RIGHT TO ADJUST FEATURES SUCH AS BUT NOT LIMITED TO LOT LINES, ROADS, LAGOONS/STORMWATER BMPS, ACTIVE OPEN SPACE ETC. WHILE MEETING THE INTENT OF THE PUD AND MASTER PLAN APPROVED BY THE JURISDICTION OF AUTHORITY.

THIS PLAN SHOWS THE GENERAL INTENT FOR TREES TO BE SAVED FOR THE PROJECT. THE HEALTH OF THE TREES IS NOT KNOWN AT THIS TIME SO SOME TREES MAY BE IN POOR CONDITION AND MAY NEED TO BE REMOVED. THE PLAN WILL MEET THE APPLICABLE LANDSCAPE REQUIREMENTS AT THE TIME OF THE DEVELOPMENT PLAN APPLICATION.



- KEY**
- SIGNIFICANT TREE TO REMAIN
 - SIGNIFICANT TREE TO BE REMOVED
 - PRIORITY TREE TO REMAIN (LIVE OAKS)
 - PRIORITY TREE TO BE REMOVED (LIVE OAKS)



TREE SAVE MASTER PLAN
NEW RIVERSIDE 8A

TOWN OF BLUFFTON | BEAUFORT COUNTY | SOUTH CAROLINA

MARCH 2026

PREPARED BY:

THOMAS HUTTON
 50 PARK OF COMMERCE WAY
 SAVANNAH, GA 31405 • 912.234.5300
 WWW.THOMASANDHUTTON.COM

This map illustrates a general plan of the development which is for discussion purposes only, does not limit or bind the owner/developer, and is subject to change and revision without prior written notice to the holder. Dimensions, boundaries and position locations are for illustrative purposes only and are subject to an accurate survey and property description.

COPYRIGHT © 2025 THOMAS & HUTTON