



## LOT 52-2 BLUE CRAB

### Hand-crafted Quality

The Architectural Collection uses modern materials with a centuries-old technique of mortise and tenon joinery to provide the strongest structural joint. And our shutters are hand-cut and hand-assembled to meet your exact specifications.

### Durable Down to the Last Detail

Architectural Collection shutter frames feature unsurpassed durability due to the strength of the marine-grade fiberglass used in our proprietary stile and louver designs.

We use our own proprietary, exterior grade composite wood to manufacture solid, sturdy shutter panels. The shutter rails are crafted from single-sheet, structural-grade PVC delivering strength and stability, and allowing for custom rail sizing in combination and louver style only. The specialized tooling of each of our selected materials enables the creation of fine, historically-correct detail.

### Finishing Touches

Our advanced finishing process gives you enduring, vibrant colors that last a lifetime and our partnership with the world leader in finishes allows us to match almost any color. Meaning you can find the color you seek. And be sure you won't have to go through the agony of locating it ever again.

The **Architectural** Collection



Louvered Colonial | Black 632

# Louvered Colonial

True to centuries-old design, our Louvered Colonial shutters provide timeless elegance with the crisp lines of genuine open louvers. Just as louvered shutters performed the duties of keeping inclement weather out, protecting the home and allowing ambient light, our shutters today provide the same functionality with integrity that will stand throughout your lifetime.

**LOT 52-2 BLUE CRAB**



Standard



Additional Rail



Faux Tilt Rod

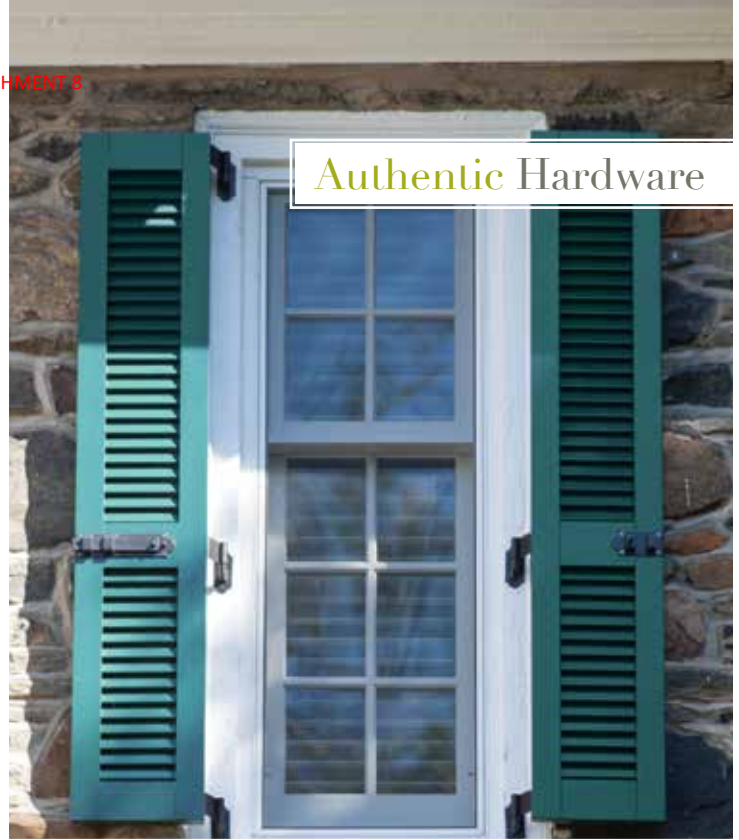
# Authentic Hardware



## A detail no one will miss.

Our architecturally-correct and historically accurate hardware is a small detail that speaks volumes to the attentive style of your home. An ornament in themselves, they evoke the craftsmanship of a blacksmith forging clean, elegantly simple architectural elements.

For fixed mounting applications, a clean finish is possible by using our clear polycarbonate L-brackets. Bahama shutters use aluminum hardware that is available in a mill or anodized aluminum black finish.



Providing full utility, our durable hardware is forged from 304 series stainless steel with a matte black, powder coat finish. From depth-enhancing Slide Bolts to smoothly attractive "S" Holdbacks and Rat-tail Holdbacks, hardware pieces amplify style with endearing simplicity.

When shutters are in the open position, our traditional hardware adds beautiful dimension by setting the shutters off from the home, allowing a hint of exterior cladding to be visible between each shutter leaf and the structure for a noticeable fine touch.

## ARCHITECTURAL COLLECTION

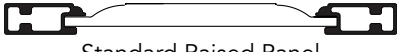
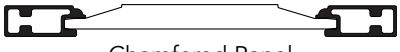
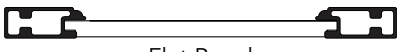
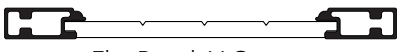
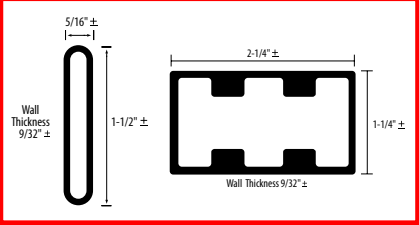

**Installation:** To be installed in either an operable or fixed application in accordance with manufacturer's recommendations, with no nailing or screwing through face of shutter. See installation instructions for measuring and ordering.

**Hardware – Colonial style shutters:** Black powder coated stainless steel, all other fasteners also to be stainless steel.

**Hardware – Bahama:** Aluminum mill or anodized aluminum black finish arms. Hinges are aluminum with factory-applied two-part acrylic urethane finish.

**Performance:** All fiberglass louvers and side rails to be thermally stable from -100°F to +200°F.

**Warranties:** Limited Lifetime against defects in materials and factory paint finish. Limited to original purchaser. See warranty for complete details.

PANEL	LOUVERED COLONIAL	COMBINATION
 <p>Standard Raised Panel</p>  <p>Chamfered Panel</p>  <p>Flat Panel</p>  <p>Flat Panel, V-Groove</p>		 <p>Consists of louver and panel components</p>

<b>Rails</b>	Structural PVC with smooth outer skin		
<b>Panels</b>	Proprietary exterior grade composite wood materials	N/A	Structural PVC with smooth outer skin
<b>Louvers</b>	N/A	Pultruded Structural Fiberglass	
<b>Stiles</b>	Pultruded Structural Fiberglass		
<b>Primer</b>	Entire product primed	N/A	Entire product primed
<b>Paint Finish</b>	Industrial grade two-part urethane, oven cured finish. 25 standard colors (custom colors available).		
<b>Thickness</b>	1"	1-1/4"	1-1/4"
<b>Width</b>	12" - 30" (in 1/8" increments)	9" - 30" (in 1/8" increments) <i>Rail widths, if specified, may vary slightly due to louver/slat positioning</i>	12"-30" (in 1/8" increments) <i>Rail widths, if specified, may vary slightly due to louver/slat positioning</i>
<b>Height</b>	24"-119" (in 1/8" increments)	13-1/2"-119" (in 1/8" increments)	24"-119" (in 1/8" increments)
<b>Vertical Stile</b>	2-1/4"	2-1/4"	2-1/4"
<b>Top Rail</b>	3"	Standard 4"	4"
<b>Middle Rail</b>	3"	Standard 3-3/8"	4"
<b>Bottom Rail</b>	3"	Standard 4" (may vary)	4"
<b>Custom Rail Height</b>	N/A	Available 1-1/4" increments from standard rail	
<b>Louver Angle</b>	N/A	25°	
<b>Addl Rail</b>	N/A	3-3/8" or may vary 1-1/4" increments	3-3/8" or may vary 1-1/4" increments

TRADITIONAL HARDWARE



**Pintel on Plate**

- Sold in pairs
- Pintel plate - 1-1/2" x 3-1/2" x 1/8"
- Pin diameter - 3/8"
- Stainless steel with a matte black powder coat finish
- Offsets: 1/2", 1-1/2", 2-1/4", 3-1/2"



**Jamb Pintel**

- Sold in pairs
- Stainless steel with a matte black powder coat finish
- Offsets: 1/2", 1", 2"



**4" Lag Pintel**

- Sold in pairs
- Stainless steel with a matte black powder coat finish
- Pin diameter: 3/8"



**Pintel Shim**

- Sold as each
- Shim is 1/4" thick and stackable
- Black polyamide plastic



**6" L-Hinge with Throw**

- Sold in same size pairs
- Stainless Steel with a matte black powder coat finish
- Offsets: 0", 1/2", 1-1/2", 2-1/4"



**Flat Hinge with Throw**

- Sold in pairs
- Stainless Steel with a matte black powder coat finish
- Offsets: 0", 1/2", 1-1/2", 2-1/4"



**No Throw 6" L-Hinge**

- Sold in same size pairs
- Stainless steel with a matte black powder coat finish
- Offset: 0"



**No Throw Flat Hinge**

- Sold in pairs
- Stainless steel with a matte black powder coat finish
- Offset: 0"



**Strap Hinge**

- Sold in pairs
- Stainless steel with a matte black powder coat finish
- Two sizes, 10" and 12"
- 10" Offsets: 0", 1/2", 1-1/2", 2-1/4"
- 12" Offsets: 1/2", 1-1/2"



**Decorative Hinge**

- Sold in pairs
- Stainless steel with a matte black powder coat finish
- Non-operable
- Two sizes, 10" and 12"



**6" Lag Bolt**

- Sold in pairs
- Stainless Steel with a matte black powder coat finish
- For use with "S" and Rat-Tail Holdbacks



**12" Slide Bolt**

- Sold as each
- Stainless Steel with a matte black powder coat finish
- Two options, standard and locking



**Acorn Holdback**

- Sold as each
- Chromed Bronze Bullet
- Solid steel hanger bolt and spring clip



**Dog Post Holdback**

- Sold as each
- Stainless steel with a matte black powder coat finish



**"S" Holdback**

- Sold in pairs with 4" lag bolt, washer and cotter pin
- Stainless steel with a matte black powder coat finish



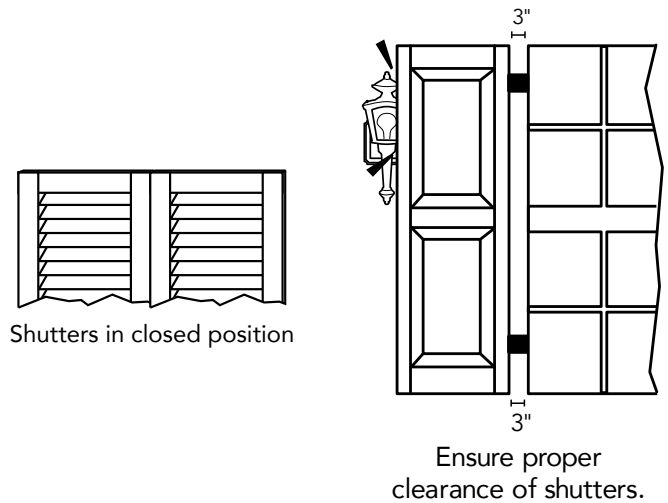
**Rat-Tail Holdback**

- Sold in pairs with 4" lag bolt, washer and cotter pin
- Stainless steel with a matte black powder coat finish

To deflect rain away from the structure, louvered shutters should be installed so the louvers face AWAY from the structure when shutters are closed.

Shutter swing is 3" per shutter from the edge of the open shutter to the edge of the window opening when the shutter is closed; be sure to check for proper clearance (i.e. lamps, fixtures) when the shutter is in the open position.

Hinges are usually applied to the back of the shutter. They are only visible in their entirety when the shutter is in the closed position.

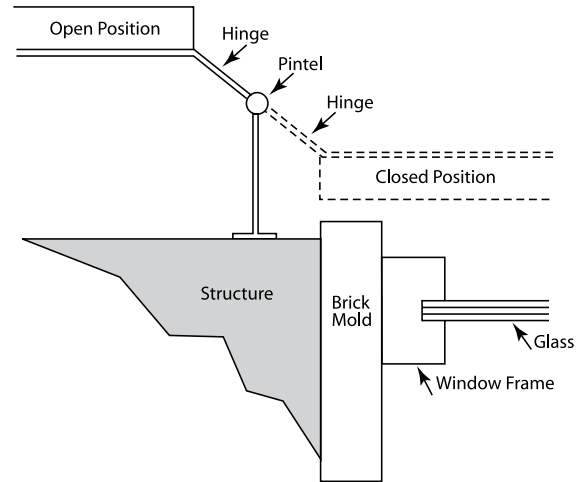


**EXAMPLES OF COMMON INSTALLATION OPTIONS - TRADITIONAL HARDWARE**

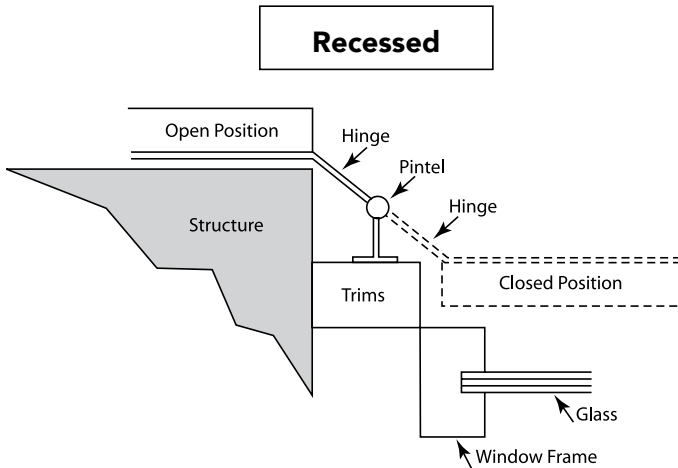
**HINGE REQUIREMENTS**

<b>Shutter Height</b>	12" to 48"	49" to 96"	97" to 108"
<b>Hinge Requirement</b>	2	3	4

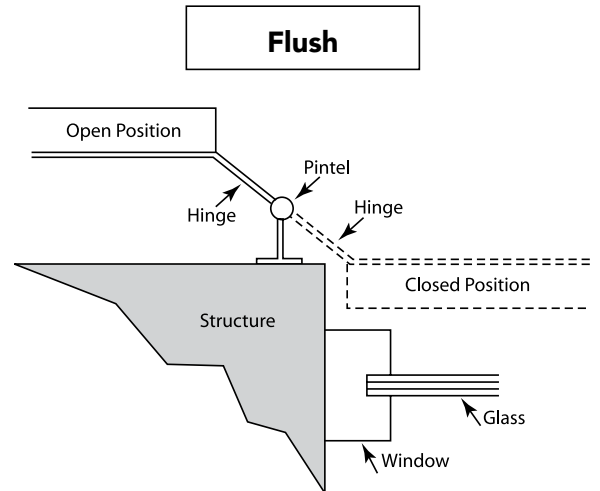
**Projected**



**Recessed**



**Flush**





# Welcome Home



MADE  
IN THE  
USA 



**Digger  
Specialties  
Inc.**

*Transforming the Outdoor Living Experience™*



Westbury® Aluminum Railing is  
**Six Ways Better**  
 Than Other Railing Systems:

- Proprietary 10 Step Coating For Permanent Color and Finish
- Available In Stunning Colors and Textures
- Extremely Low Maintenance
- Designer Aesthetics To Enhance Any Deck or Porch
- Fastest Railing System To Install
- Code Approved For Residential or Commercial Construction

## Railing System Comparison Chart

Railing System	Permanent Finish	Fade Resistant	Lifetime Limited Warranty	Easy to Install	Low Maintenance	Low Installation Cost
Westbury® Aluminum	•	•	•	•	•	•
Composite	•	•	•		•	
Iron or Steel		•				
Wood						•
Vinyl	•		•	•	•	•



ATTACHMENT 8



# TUSCANY SERIES



example vertical pickets on Blue Crab Home

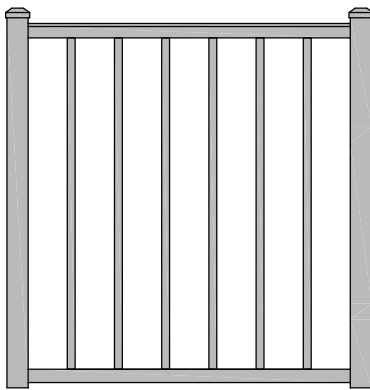
# GATES & HARDWARE

DSI offers matching gates for most Westbury® Aluminum Railing styles\*. Gates allow the flexibility to “enclose” your railing area, keeping your family safe from stair hazards and your pets limited to your deck or patio area. All Westbury® C Series gates, with the exception of Veranda (a welded gate), are adjustable.

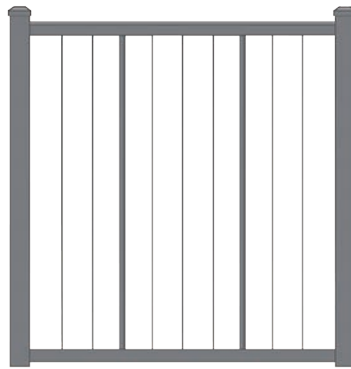
\*Gates are not available for Montego Series.



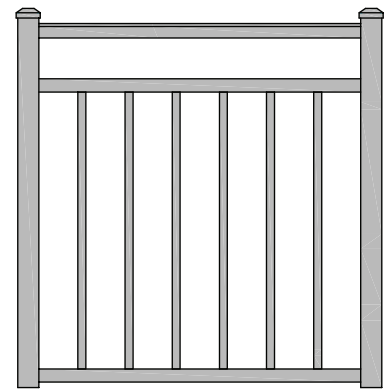
## Adjustable Gates ← example at pool gate



**Tuscan Series**  
36”W, 48”W, and 60”W Openings

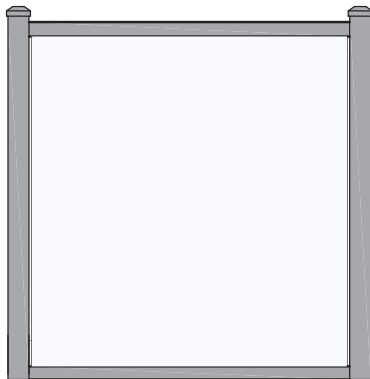


**VertiCable®**  
36”W, 48”W, and 60”W Openings



**Riviera Series**  
36”W, 48”W, and 60”W Openings

## Welded Gates



**Veranda**  
36”W, 48”W, and 60”W Openings  
1/4” Tempered Glass

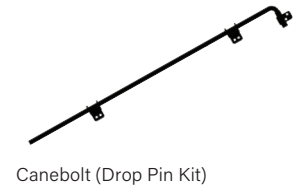
## Latches



## Hinges



## Canebolt



# POST KITS

Westbury® Aluminum Railing Post Kits contain all the components necessary to assemble a railing post. Kits eliminate the need to order post components by providing everything in one box. Kits are available for a variety of post sizes (see charts on page 21).

Kits Include:

- Post
- Flat Cap\*
- 2-piece Post Flair

**Assembled Post Kits** come with mounts attached to the post reducing installation time. These Kits are available for VertiCable® Sections without mounts and Tuscan Assembly Sections. Assembled Post Kits are available for a variety of post types (see chart below).

Assembled Kits Include:

- Post with Sections Mounts Attached
- Flat Cap\*
- 2-piece Post Flair



Assembled Post Kit

## Assembled Post Kits w/Adjustable Plates 2" x 2" x .090"

Assembled Kits are available in four Powdered Coated Colors: Black Fine Texture, Bronze Fine Texture, White Fine Texture, and Gloss White.



	Line Post	End Post	Corner Post	Crossover Line Post	Crossover End Post	Crossover Corner Post
Heights	37", 43"	37", 43"	37", 43"	36", 42"	36", 42"	36", 42"

\*Caps are not included with Crossover Post Kits.

# INSPIRATION

## Custom Railing

We put the "special" in Digger Specialties!

Let DSI help solve your unique installation challenges and design needs.



Multiple Color Rails and Balusters



Tuscany Carribean Railing

-included for decorative panel inspiration only



# A New Category of Exterior Trim

## A New Category of Exterior Trim

- The first and only Poly-ash trim product, consisting of a blend of proprietary polymers and coal combustion products (ash).
- Poly-ash composition provides consistency throughout the material with virtually no moisture cycling<sup>+</sup> or expansion and contraction<sup>+</sup>.
- Developed with years of rigorous internal and 3rd party testing, proven with thousands of installations.
- Composed of more than 70% recycled materials.
- Boral TruExterior® Trim is a product you can trust to provide exceptional performance, superior workability and a lasting appearance for exterior applications.

## An Excellent Exterior Trim Alternative

### Like Wood, Boral TruExterior® Trim...

- is easy to handle (similar weight)
- is reversible with an authentic wood grain and smooth side
- is easy to cut, rout, drill and fasten
- can be installed with the same tools

### Unlike Wood, Boral TruExterior® Trim...

- is a low maintenance product
- has exceptional durability
- is resistant to rotting, cracking, splitting from moisture and virtually free from termites<sup>+</sup>
- offers excellent workability

### Unlike most other trim products, Boral TruExterior® Trim...

- maintains a high level of dimensional stability during periods of moisture and temperature change<sup>+</sup>
- is suitable for ground contact
- does not require end-sealing, special adhesives or other cumbersome and costly installation techniques
- can be painted any color
- contains one of the highest levels of recycled content



<sup>+</sup>Please see Boral TruExterior® Trim Limited Warranty and Product Data Sheets for proprietary test results located at [www.BoralTruExterior.com](http://www.BoralTruExterior.com)

# Like No Other

**Boral TruExterior® Trim satisfies the exterior trim customer's need for a product that is:**

- **Easy to install**
- **Long-lasting, withstanding nature's elements**
- **Competitively priced compared to other products in the marketplace**

## Superior Workability

Boral TruExterior® Trim is creating an entirely new category of reliable exterior trim that offers phenomenal performance, remarkable workability, and a lasting look without the limitations that plague other exterior trim products. Plus it can be installed using proven woodworking tools and methods.

## Applications

Designed to be used in non-structural applications, Boral TruExterior® Trim is suited for ground contact, which makes it ideal for exterior trim applications such as:

- **Corners**
- **Soffits**
- **Fascia**
- **Batten strips**
- **Frieze boards**
- **Rake boards**
- **Garage door casings**
- **Window surrounds**
- **Door trim**
- **Other non-structural exterior trim applications**



# The Exterior Trim Landscape

## Boral TruExterior® Trim compared to Other Trim Options

	BORAL TRUEXTERIOR® TRIM	WOOD TRIM	CELLULAR PVC TRIM	FIBER CEMENT TRIM	ENGINEERED/ COMPOSITE TRIM
No Special Tools Required	•	•	•		•
Easily Routed	•	•	•	✓	✓
Consistent Density	•		✓	•	
Fasten Close to Edge of Product	•		•		
Readily Accepts Wide Variety of Fasteners	•	✓	✓		
No Special Paint Needed For Light or Dark Colors	•	•		•	•
No Additional Safety Precautions Needed While Cutting	•	•	•		•
Installs the Same Way at All Temperatures	•	•		•	•
No Need to Prime End or Field Cuts	•		•		
No Need for Adhesives to Limit Movement	•	•		•	•
Dimensionally Stable After Installation <sup>+</sup>	•	✓		•	
Suitable for Ground and Masonry Contact	•		•		
No Cracking or Splitting from Moisture <sup>+</sup>	•		•	✓	✓
Resistant to Fungal Decay <sup>+</sup>	•		•		
Over 70% Recycled Content <sup>+</sup>	•				
Made in the USA	•	✓	✓	✓	✓

● All in Category    ✓ Some in Category

<sup>+</sup>Please see Boral TruExterior® Trim Limited Warranty and Product Data Sheets for proprietary test results located at [www.BoralTruExterior.com](http://www.BoralTruExterior.com)

# The Sustainable Solution

In the U.S., Boral continues the company's mission of being a leader in sustainability by engaging in such areas as alternative fuel sources and waste water management systems.



- Boral is committed to global environmental stewardship, which is reflected in Boral TruExterior® Trim – the first and only exterior trim product to be awarded a Cradle to Cradle certification (C2C). C2C is a multi-attribute, eco-label that assesses a product's safety to humans, environment and design for future life cycles. Within the terms of the certification program, this means pursuing the following ideals:
  - Using material that is safe for human health and the environment
  - Designing products and systems for material recovery and reutilization, such as recycling or composting
  - Using renewable energy
  - Efficiently using water and realizing maximum water quality associated with production
  - Instituting strategies for social responsibility

*For more information on Cradle to Cradle Certification, please visit [www.C2Ccertified.com](http://www.C2Ccertified.com)*

Cradle to Cradle Certified™ is a certification licensed by the Cradle to Cradle Products Innovation Institute.



- Boral TruExterior® Trim boasts the highest recycled content among all exterior trim products with a SCS Global Certified minimum 70% recycled content. The SCS Recycled Content certification is designed to help manufacturers make credible claims about their products by increasing the use of recycled materials which reduces solid waste and natural resource consumption. All claims are certified in accordance with U.S. Federal Trade Commission's Guides for the Use of Environmental Marketing.

*For more information on SCS Global, please visit [www.SCSglobalservices.com](http://www.SCSglobalservices.com)*



- Coal Combustion products are endorsed by the U.S. Green Building Council for use in construction materials.

*For more information on the U.S. Green Building Council, please visit [www.USGBC.org](http://www.USGBC.org)*

- Boral TruExterior® Trim is produced in a state of the art LEED Silver Certified facility in East Spencer, NC.

