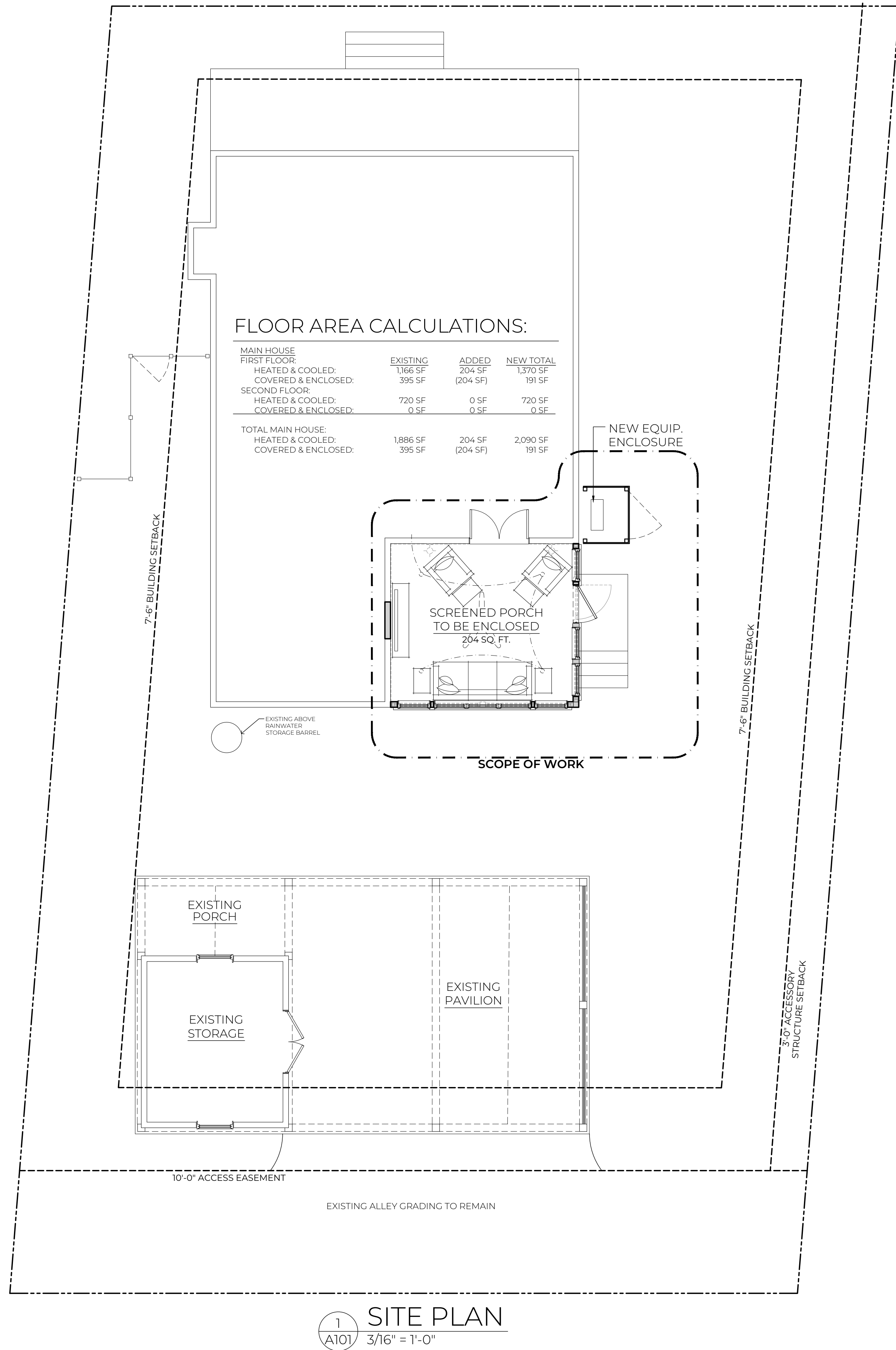


ABBREVIATIONS:

AB	ANCHOR BOLT	KS	KNEE SPACE
ABV	ABOVE	LAM	LAMINATE
ABF	ABOVE FINISH FLOOR	LL	LIVE LOAD
ASF	ABOVE SUB-FLOOR	LT	LIGHT
A/C	AIR CONDITIONER	LIN	LINEN
AHU	AIR HANDLING UNIT	MA	MASONITE
ALUM	ALUMINUM	MAS	MASONRY
MSL	ABOVE MAX SEA LEVEL	MAX	MAXIMUM
APPROX	APPROXIMATE	MECH	MECHANICAL
BD	BOARD	MED	MEDIUM
BF	BUILDING	MFR	MANUFACTURER
BLC	BLOCKING	MD	MIDDLE
BLD-G	BUILDING	MIN	MINIMUM
B.O.	BOTTOM OF	MISC	MISCELLANEOUS
BO	BASIS OF DESIGN	MUL	MULLION
BRG	BROW	NA	NOT APPROPRIATE
BTW	BETWEEN	N/C	NOT IN CONTRACT
CAB	CABINET	NTS	NOT TO SCALE
CANT	CANTILEVER	OC	ON CENTER
CH	CHIMNEY	OH	OVERHANG
CL	CEILING JOIST	OPNG	OPENING
CLOS	CENTLINE	OSB	ORIENTED STRAND BOARD
CLG	CLOSET	PEMB	PRE-ENGINEERED METAL
CM	CASEMENT		BLDG
CO	CASED OPENING	PL	PLATE
COL	COLUMN	PNL	PANEL
CNC	CONCRETE	PNT	PAINT
CT	CONCRETE TILE	PR	PAIR
DBL	DOUBLE	PT	PRESSURE TREATED
DEMO	DEMOLISH	PVC	POLYVINYLCHLORIDE
DH	DOUBLE HUNG	PVMT	PAVEMENT
DIA	DIAMETER	PLY	PLYWOOD
DIM	DIMENSION	PWDR	POWDER ROOM
DIST	DISTANCE	R	RISER
DN	DOWN	R & S	ROD & SILL
DR	DOOR	RAG	RETURN AIR GRILL
DW	DISHWASHER	REF	REFRIGERATOR
DWG	DRAWING	REQ'D	REQUIRED
E	EACH	RM	ROOM
ELEV	ELEVATION	RV	RIDGE VENT
ELEC	ELECTRICAL	SCHED	SCHEDULE
EQ	EQUAL	SECT	SECTION
EQUIP	EQUIPMENT	SF	SQUARE FEET
EXT	EXISTING	SH	SHED
EXT	EXTERIOR	SIM	SIMILAR
FD	FLOOR DRAIN	SPEC	SPECIFICATION
FFN	FOUNDATION	SF	SQUARE FEET
FF	FIRST FLOOR	STD	STANDARD
FDE	FINISH FLOOR	STL	STEEL
	ELEVATION	STOR	STORAGE
FIN	FINISH	SYS	SYSTEM
FIX	FIXTURE	THRD	THREAD
FLUOR	FLUORESCENT	T.O.	TOP OF
FLR	FLOOR	TR	TRANSOM
F	FREESTANDING	T & G	TONGUE & GROOVE
FRM	FRAMING	TEL	TELEPHONE
FT	FEET	TEMP	TEMPORARY/TEMPERATURE
FTG	FOOTING	THK	THICK
GA	GALVANIZED	TV	TELEVISION
GLV	GLASS	TYP	TYPICAL
GYP	GYPSUM	UC	UNDER-COUNTER
GWB	GYPSPUM WALL BOARD	UNFIN	UNFINISHED
H	HOSE BIBB	UNO.	UNLESS OTHERWISE NOTED
HDR	HEADER		OTHERWISE
HORIZ	HORIZONTAL	VB	VAPOR BARRIER
HT	HEIGHT	VER	VERIFY
INCH	INCH	V.F.	VERIFY IN FIELD
INCL	INCLUDE	VERT	VERTICAL
INSUL	INSULATION	WD	WOOD
INT	INTERIOR	W/D	WASHER-DRYER
JOIST	JOIST	WH	WATER HEATER
JNT	JOINT		



**DRAWING INDEX:**

		4/21/2015 FOR REVIEW				
SHEET #	SHEET DESCRIPTION					
ARCHITECTURAL						
AS101	SITE PLAN	■				
AD101	DEMOLITION PLANS	■				
A101	RENOVATION PLANS	■				
A501	DETAILED SECTIONS	■				
STRUCTURAL						

## DESIGNERS OF RECORD:

DISCIPLINE	FIRM	LICENSE NO.	PHONE NO.
Architectural	DePauw Architects	101468	843-284-7848
Structural	---		

**BUILDING CODES:**

INTERNATIONAL RESIDENTIAL CODE: 2021  
(ALL CODES WITH SOUTH CAROLINA MODIFICATIONS)

**NOTES:**

NOTICE TO PERMITTING AUTHORITY & BUILDING OWNER REGARDING CONSTRUCTION ADMINISTRATION SERVICES

THE SEALING ARCHITECT AND THE FIRM OF RECORD HAVE NOT BEEN ENGAGED TO PERFORM THE MINIMUM CONSTRUCTION ADMINISTRATION SERVICES, AS DEFINED IN SC CODE OF REGULATIONS CHAPTER 11-12(B).

ARCHITECT OF RECORD IS NOT RESPONSIBLE FOR INTERPRETING THE INTENT OF THE CONSTRUCTION DOCUMENTS INCLUDING MAKING MODIFICATIONS AS MAY BE NECESSARY DURING THE CONSTRUCTION PHASE; AND THE ARCHITECT OF RECORD IS NO LONGER LIABLE FOR THE WORK WHERE CHANGES TO THESE DOCUMENTS HAVE BEEN MADE.

## GENERAL NOTES

THE FOLLOWING DOCUMENTS ARE TO BE USED FOR DESIGN INTENT AND IN COORDINATION WITH SUPPLEMENTAL ENGINEERING DOCUMENTS.

SEE STRUCTURAL ENGINEERING DOCUMENTS FOR STRUCTURAL CONNECTION TECHNIQUES, CALCULATIONS REQUIRED BY CODE, CODE COMPLIANCE INSTRUCTIONS FOR WALL AND ROOF CONSTRUCTION, AND TIE DOWN REQUIREMENTS.

WHEN ARCHITECTURAL DRAWINGS ARE IN CONFLICT WITH ENGINEERING DRAWINGS, THE GENERAL CONTRACTOR SHALL REQUEST CLARIFICATION FROM THE ARCHITECT BEFORE PROCEEDING.

CONTRACTOR WILL VERIFY ALL EXISTING CONDITIONS IN THE FIELD- ANY DISCREPANCIES WILL BE BROUGHT TO THE ATTENTION OF THE ARCHITECT.

FOR DIMENSIONS NOT SHOWN OR IN QUESTION, THE CONTRACTOR WILL REQUEST CLARIFICATION FROM THE ARCHITECT BEFORE PROCEEDING.

THE FOLLOWING DOCUMENTS HAVE BEEN PREPARED SPECIFICALLY AND SOLELY FOR THE PROJECT NAMED HEREIN. THEY ARE NOT SUITABLE FOR USE ON OTHER PROJECTS OR IN OTHER LOCATIONS WITHOUT THE PARTICIPATION OF THE ARCHITECT. REPRODUCTION IS STRICTLY PROHIBITED. THE ARCHITECT SHALL BE DEEMED THE AUTHOR AND OWNER OF THESE DOCUMENTS AND SHALL RETAIN COMMON LAW, STATUTORY AND OTHER RESERVED RIGHTS, INCLUDING THE COPYRIGHT AS DEFINED UNDER SECTION 102 OF THE COPYRIGHT ACT (TITLE 17 OF THE UNITED STATES CODE).

DIMENSION NOTES:

ALL DIMENSIONS ARE TO EDGE OF SLAB, BLOCK, & FRAMING OR COLUMN CENTERLINE U.O.N.

PLUMBING NOTES:

G.C. TO COORDINATE ALL IN-SLAB ELECTRICAL AND PLUMBING REQUIREMENTS WITH APPROPRIATE SUBCONTRACTORS PRIOR TO PLACING SLAB. G.C./OWNER TO COORDINATE LOCATION OF EXTERIOR HOSE BIBBS.

## FOUNDATION NOTES

SEE STRUCTURAL ENGINEERING DOCUMENTS FOR SIZE, LAYOUT, AND SPACING OF STRUCTURAL MEMBERS & REINFORCING, AND CONNECTION DETAILS.

SUPPORT REINFORCING DURING CONCRETE PLACEMENT PER IRC R506.2.4.

## FRAMING NOTES:

SEE STRUCTURAL ENGINEERING DOCUMENTS FOR SIZE, LAYOUT, AND SPACING OF STRUCTURAL MEMBERS, AND CONNECTION DETAILS.

DePAUW  
ARCHITECTS

POST OFFICE BOX 688  
BLUFFTON, SC 29910  
(843) 284-7848  
WWW.DEPAUW.STUDIO

NOT FOR CONSTRUCTION

THIS DRAWING IS THE PROPERTY OF THE ARCHITECT AND IS NOT TO BE REPRODUCED IN WHOLE OR IN PART BY ANY MEANS OR METHOD WITHOUT THE EXPRESS WRITTEN CONSENT OF THE ARCHITECT. ANY UNAUTHORIZED REPRODUCTION OR REUSE OF THESE DOCUMENTS WILL RESULT IN LEGAL ACTION.

A PORCH ENCLOSURE FOR  
THE DUNCAN RESIDENCE  
4 TABBY SHELL ROAD  
TABBY ROADS  
BLUFFTON, SC 29910

## REVISIONS

PROJECT NO. 2502  
CONTACT LRD  
DATE 4.28.2025

SHEET

# A101

## SITE PLAN



DePAUW  
ARCHITECTS

POST OFFICE BOX 688  
BLUFFTON, SC 29910  
(843) 284-7848  
WWW.DEPAUW.STUDIO

NOT FOR CONSTRUCTION

COPYRIGHT 2025 DePAUW ARCHITECTS LLC  
THIS DRAWING IS THE PROPERTY OF THE ARCHITECT  
AND IS NOT TO BE REPRODUCED IN WHOLE OR IN  
PART BY ANY MEANS OR METHOD WITHOUT THE  
EXPRESS WRITTEN CONSENT OF THE ARCHITECT  
ANY UNAUTHORIZED REPRODUCTION OR REUSE OF  
THESE DOCUMENTS WILL RESULT IN LEGAL ACTION

A PORCH ENCLOSURE FOR  
THE DUNCAN RESIDENCE  
4 TABBY SHELL ROAD  
TABBY ROADS  
BLUFFTON, SC 29910

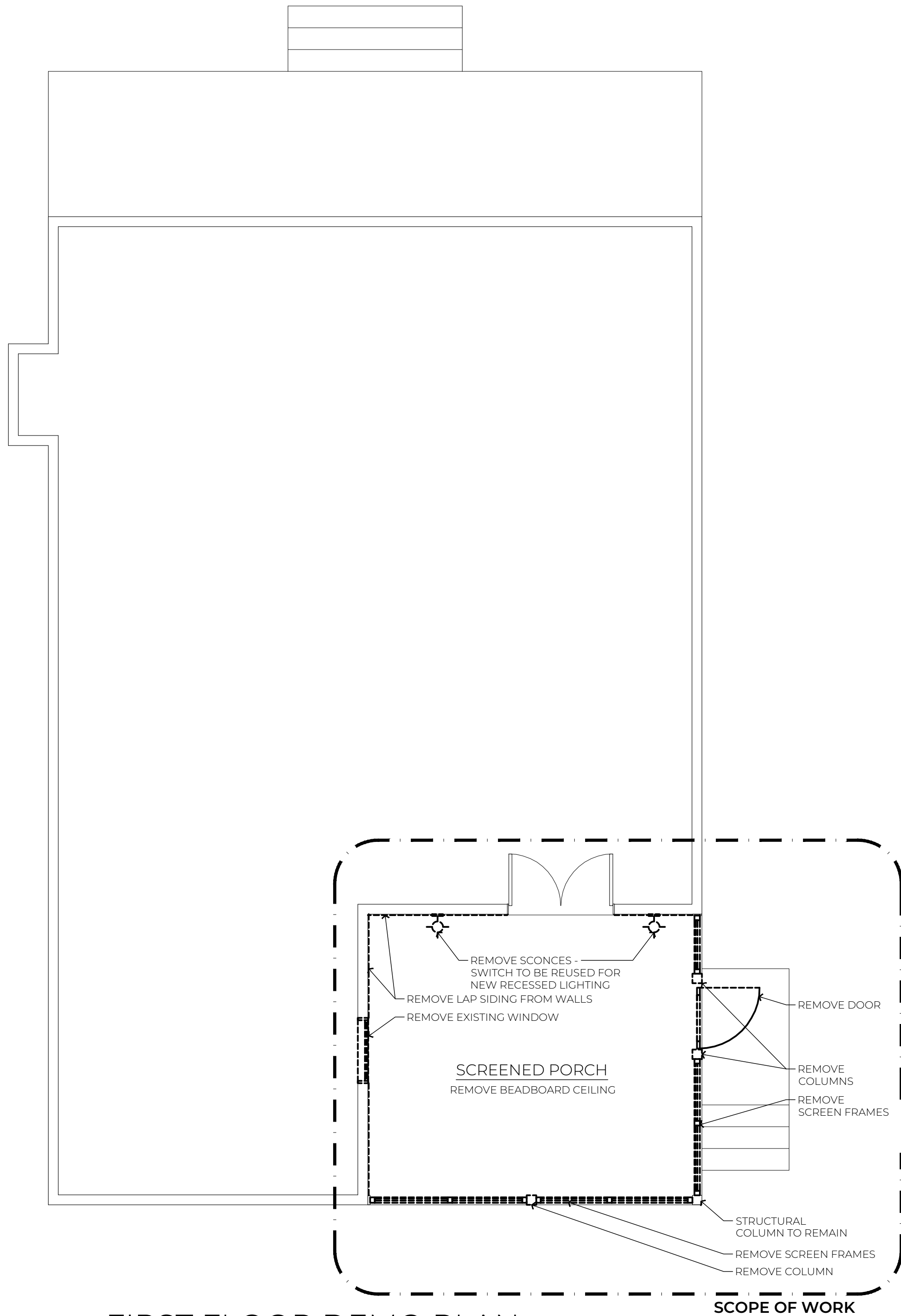
REVISIONS

PROJECT NO. 2502  
CONTACT LRD  
DATE 4.28.2025

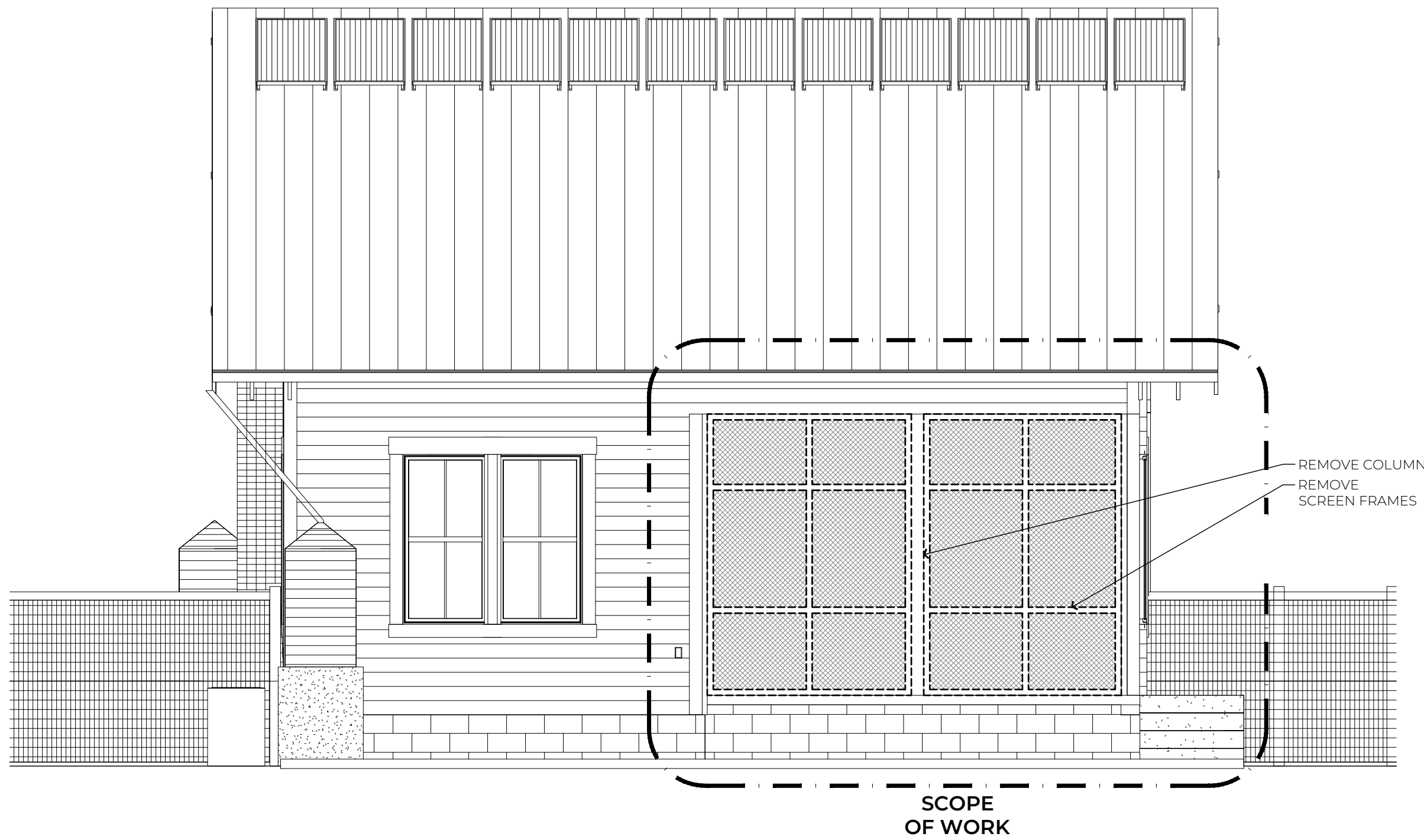
SHEET

AD101

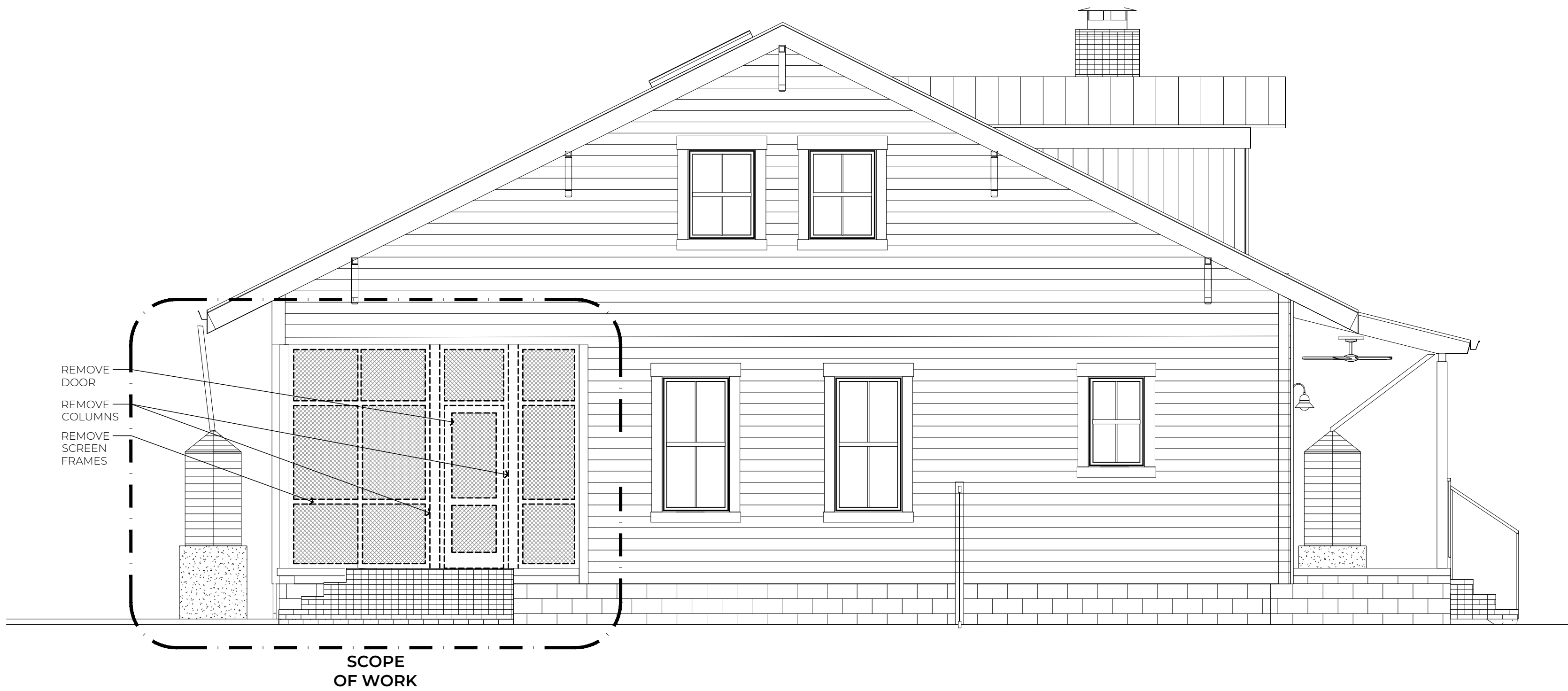
DEMOLITION PLANS



1 FIRST FLOOR DEMO PLAN  
AD101 1/4" = 1'-0"



2 DEMO REAR ELEVATION  
AD101 1/4" = 1'-0"



3 DEMO LEFT ELEVATION  
AD101 1/4" = 1'-0"

SELECTIVE DEMOLITION NOTES

- UNLESS OTHERWISE INDICATED, DEMOLITION WASTE BECOMES PROPERTY OF CONTRACTOR.
- NOTIFY ARCHITECT OF DISCREPANCIES BETWEEN EXISTING CONDITIONS AND DRAWINGS BEFORE PROCEEDING WITH SELECTIVE DEMOLITION.
- STORAGE OR SALE OF REMOVED ITEMS OR MATERIALS ON-SITE IS NOT PERMITTED.
- UTILITY SERVICE: MAINTAIN EXISTING UTILITIES INDICATED TO REMAIN IN SERVICE AND PROTECT THEM AGAINST DAMAGE DURING SELECTIVE DEMOLITION OPERATIONS.
- TEMPORARY SHORING: DESIGN, PROVIDE AND MAINTAIN SHORING, BRACING, AND STRUCTURAL SUPPORTS AS REQUIRED TO PRESERVE STABILITY AND PREVENT MOVEMENT, SETTLEMENT, OR COLLAPSE OF CONSTRUCTION AND FINISHES TO REMAIN, AND TO PREVENT UNEXPECTED OR UNCONTROLLED MOVEMENT OR COLLAPSE OF CONSTRUCTION BEING DEMOLISHED. STRENGTHEN OR ADD NEW SUPPORTS WHEN REQUIRED DURING PROCESS OF SELECTIVE DEMOLITION.
- REMOVE DEMOLITION WASTE MATERIALS FROM PROJECT SITE AND DISPOSE OF THEM IN AN EPA-APPROVED CONSTRUCTION AND DEMOLITION WASTE LANDFILL. ACCEPTABLE TO AUTHORITIES HAVING JURISDICTION. DO NOT ALLOW DEMOLISHED MATERIALS TO ACCUMULATE ON-SITE. REMOVE AND TRANSPORT DEBRIS IN A MANNER THAT WILL PREVENT SPILLAGE ON ADJACENT SURFACES AND AREAS.

SELECTIVE DEMOLITION DEFINITIONS

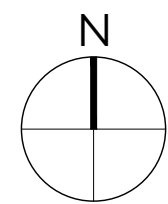
**REMOVE:**  
DETACH ITEMS FROM EXISTING CONSTRUCTION AND DISPOSE OF THEM OFF-SITE UNLESS INDICATED TO BE SALVAGED OR REINSTALLED.

**REMOVE & SALVAGE:**  
DETACH ITEMS FROM EXISTING CONSTRUCTION, IN A MANNER TO PREVENT DAMAGE, AND STORE.

**REMOVE & REINSTALL:**  
DETACH ITEMS FROM EXISTING CONSTRUCTION, IN A MANNER TO PREVENT DAMAGE, PREPARE FOR REUSE, AND REINSTALL WHERE INDICATED.

**EXISTING TO REMAIN:**  
LEAVE EXISTING ITEMS THAT ARE NOT TO BE REMOVED AND THAT ARE NOT OTHERWISE INDICATED TO BE SALVAGED OR REINSTALLED.

**DISMANTLE:**  
TO REMOVE BY DISASSEMBLING OR DETACHING AN ITEM FROM A SURFACE, USING GENTLE METHODS AND EQUIPMENT TO PREVENT DAMAGE TO THE ITEM AND SURFACES. DISPOSING OF ITEMS UNLESS INDICATED TO BE SALVAGED OR REINSTALLED.







DePAUW  
ARCHITECTS

POST OFFICE BOX 688  
BLUFFTON, SC 29910  
(843) 284-7848  
WWW.DEPAUW.STUDIO

NOT FOR CONSTRUCTION

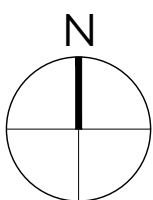
COPYRIGHT 2025 DePAUW ARCHITECTS LLC  
THIS DRAWING IS THE PROPERTY OF THE ARCHITECT  
AND IS NOT TO BE REPRODUCED IN WHOLE OR IN  
PART BY ANY MEANS OR METHOD WITHOUT THE  
EXPRESS WRITTEN CONSENT OF THE ARCHITECT  
ANY UNAUTHORIZED REPRODUCTION OR REUSE OF  
THESE DOCUMENTS WILL RESULT IN LEGAL ACTION

A PORCH ENCLOSURE FOR  
THE DUNCAN RESIDENCE  
4 TABBY SHELL ROAD  
TABBY ROADS  
BLUFFTON, SC 29910

REVISIONS

PROJECT NO. 2502  
CONTACT LRD  
DATE 4.28.2025

SHEET



A101

FLOOR PLANS

DOOR SCHEDULE

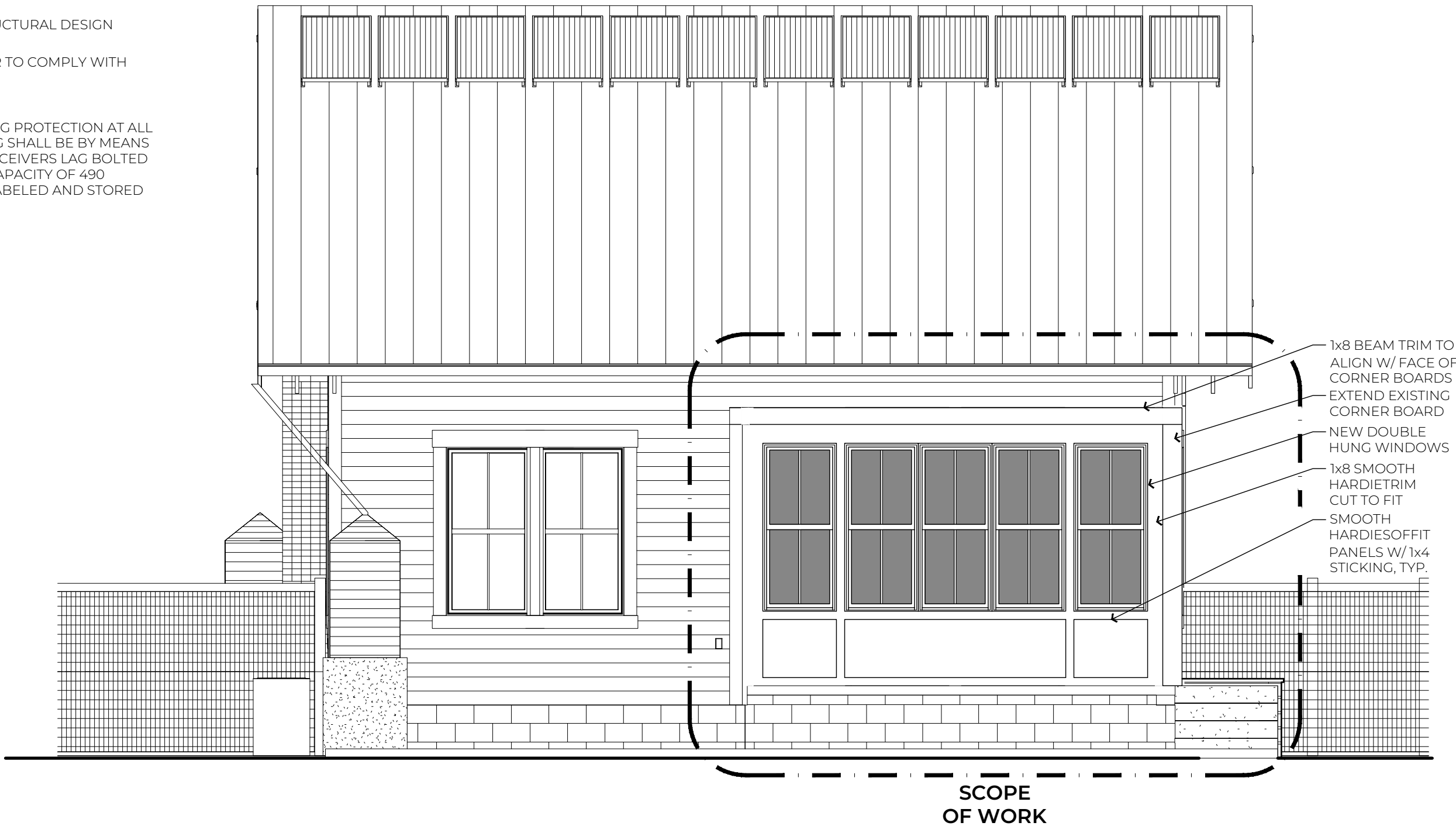
DOOR NO.	NOMINAL SIZE (SEE NOTES)			LABEL	HEAD JAMB HEIGHT (SEE NOTE 2)	MATERIAL	REMARKS
	W	H	Th				
101	3'-0"	6'-8" (R.O. 8'-8")	1 1/2"	ELOFD3068	±8'-8"	CLAD WOOD	

- NOTE 1: G.C. TO PREPARE EXTERIOR OPENINGS PER ASTM E2112.
- NOTE 2: PROVIDE PRODUCTS TO MEET OR EXCEED DESIGN PRESSURE (DP) RATINGS AS REQUIRED BY THE STRUCTURAL DESIGN CRITERIA FOR COMPONENTS & CLADDING CHART ON SHEET S100.
- NOTE 3: U-VALUE OF 0.30 AND MINIMUM SHGC OF 0.30 OR APPROVED EQUIVALENT AS SPECIFIED BY ENGINEER TO COMPLY WITH ALL APPLICABLE ENERGY CODES, BUILDING CODES AND REGULATORY REQUIREMENTS.
- NOTE 4: PROVIDE TEMPERED GLASS AS REQUIRED TO MEET IRC 2018 SECTION R308 FOR DOOR GLAZING.
- NOTE 5: PROVIDE WOOD STRUCTURAL PANELS, IMPACT PANELS OR IMPACT RESISTANCE GLAZING FOR OPENING PROTECTION AT ALL NEW WINDOWS, SKYLIGHTS AND DOORS IN ACCORDANCE WITH 2018 IRC SECTION R301.2.1.2. FASTENING SHALL BE BY MEANS OF CORROSION RESISTANT MACHINE SCREWS FASTENED TO PERMANENTLY INSTALLED THREADED RECEIVERS LAG BOLTED INTO THE FRAMING. EACH VIBRATION-RESISTANT RECEIVER SHALL HAVE A MINIMUM WITHDRAWAL CAPACITY OF 490 POUNDS. SEAL AROUND EACH RECEIVER WITH A SUITABLE SEALANT. ALL PANELS MUST BE PRECUT, LABELED AND STORED ON SITE.

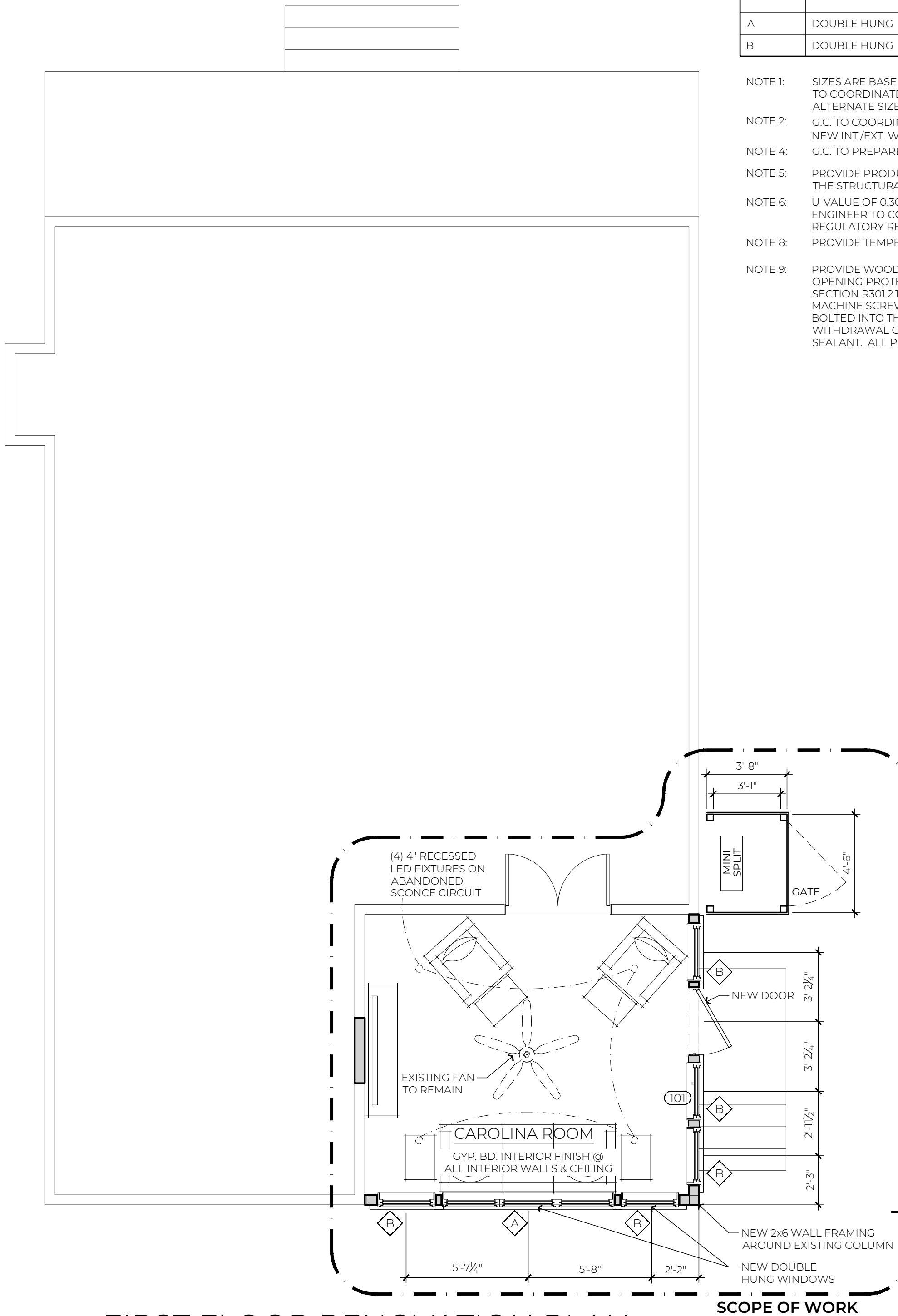
WINDOW SCHEDULE

MARK	TYPE	LABEL	HEAD JAMB HEIGHT (SEE NOTE 2)	EXTERIOR MATERIAL	EXTERIOR FINISH
A	DOUBLE HUNG	ELDH3272 3W	±8'-0"	ULTREX CLAD	STONE WHITE
B	DOUBLE HUNG	ELDH3272	±8'-0"	ULTREX CLAD	STONE WHITE

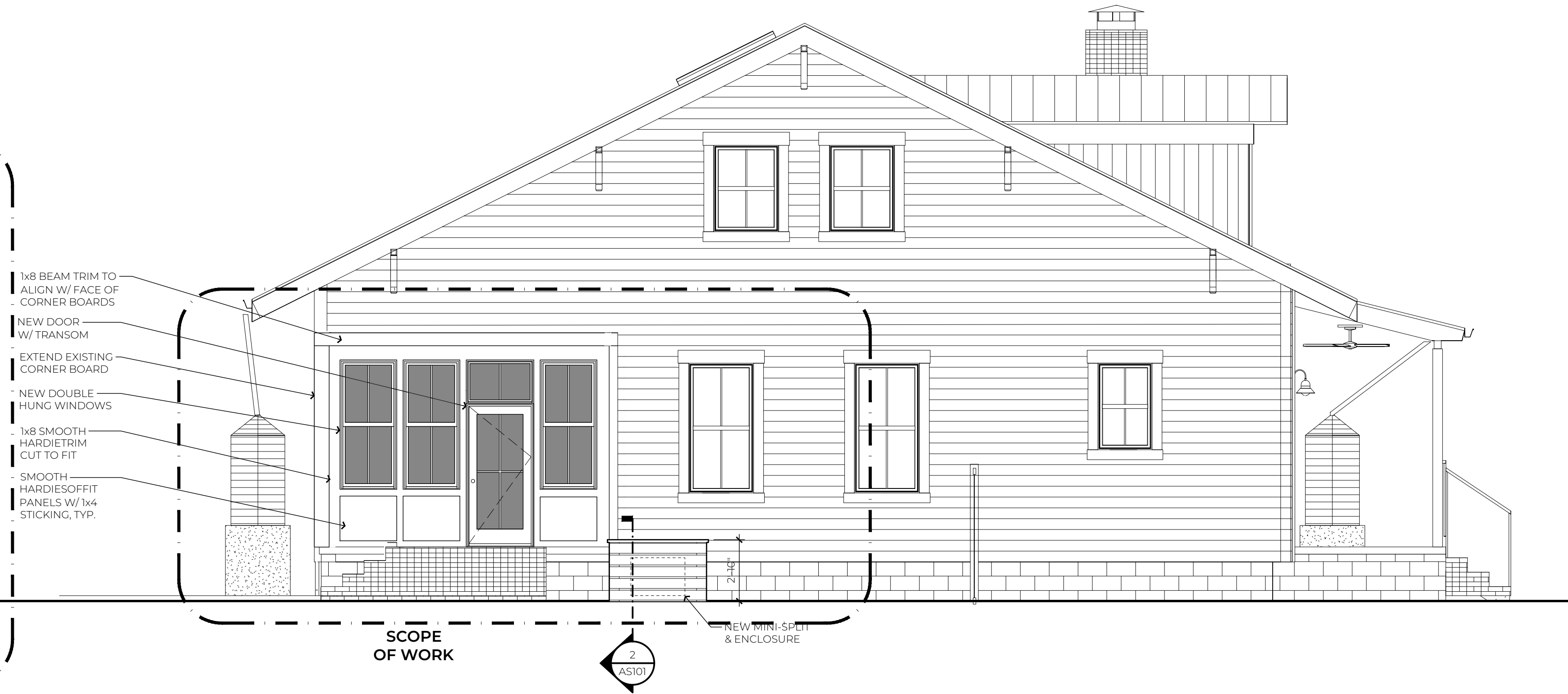
- NOTE 1: SIZES ARE BASED ON MARVIN ELEVATE. IF A DIFFERENT MANUFACTURER IS SELECTED, G.C. IS TO COORDINATE. CONTACT ARCHITECT FOR ASSISTANCE IN SELECTING APPROPRIATE ALTERNATE SIZES.
- NOTE 2: G.C. TO COORDINATE ALL NEW WINDOW/DOOR HEAD JAMB HEIGHTS TO ALIGN BOTTOM OF NEW INT./EXT. WINDOW & DOOR HEAD JAMBS.
- NOTE 4: G.C. TO PREPARE EXTERIOR OPENINGS PER ASTM E2112.
- NOTE 5: PROVIDE PRODUCTS TO MEET OR EXCEED DESIGN PRESSURE (DP) RATINGS AS REQUIRED BY THE STRUCTURAL DESIGN CRITERIA FOR COMPONENTS & CLADDING CHART ON SHEET S100.
- NOTE 6: U-VALUE OF 0.30 AND MINIMUM SHGC OF 0.30 OR APPROVED EQUIVALENT AS SPECIFIED BY ENGINEER TO COMPLY WITH ALL APPLICABLE ENERGY CODES, BUILDING CODES AND REGULATORY REQUIREMENTS.
- NOTE 8: PROVIDE TEMPERED GLASS AS REQUIRED TO MEET IRC SECTION R308 FOR WINDOW GLAZING.
- NOTE 9: PROVIDE WOOD STRUCTURAL PANELS, IMPACT PANELS OR IMPACT RESISTANCE GLAZING FOR OPENING PROTECTION AT ALL NEW WINDOWS, SKYLIGHTS AND DOORS IN ACCORDANCE WITH SECTION R301.2.1.2 OF THE 2018 IRC. FASTENING SHALL BE BY MEANS OF CORROSION RESISTANT MACHINE SCREWS FASTENED TO PERMANENTLY INSTALLED THREADED RECEIVERS LAG BOLTED INTO THE FRAMING. EACH VIBRATION-RESISTANT RECEIVER SHALL HAVE A MINIMUM WITHDRAWAL CAPACITY OF 490 POUNDS. SEAL AROUND EACH RECEIVER WITH A SUITABLE SEALANT. ALL PANELS MUST BE PRECUT, LABELED AND STORED ON SITE.



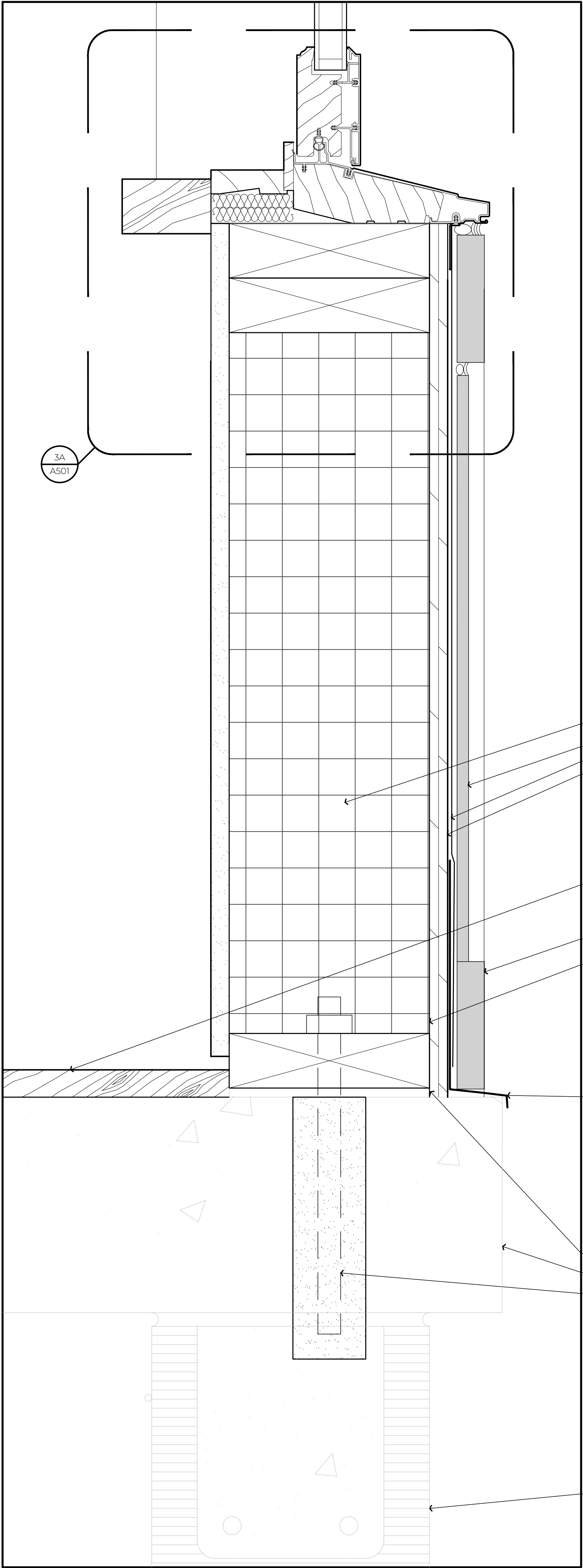
2 RENOVATED REAR ELEVATION  
A101 1/4" = 1'-0"



1 FIRST FLOOR RENOVATION PLAN  
A101 1/4" = 1'-0"

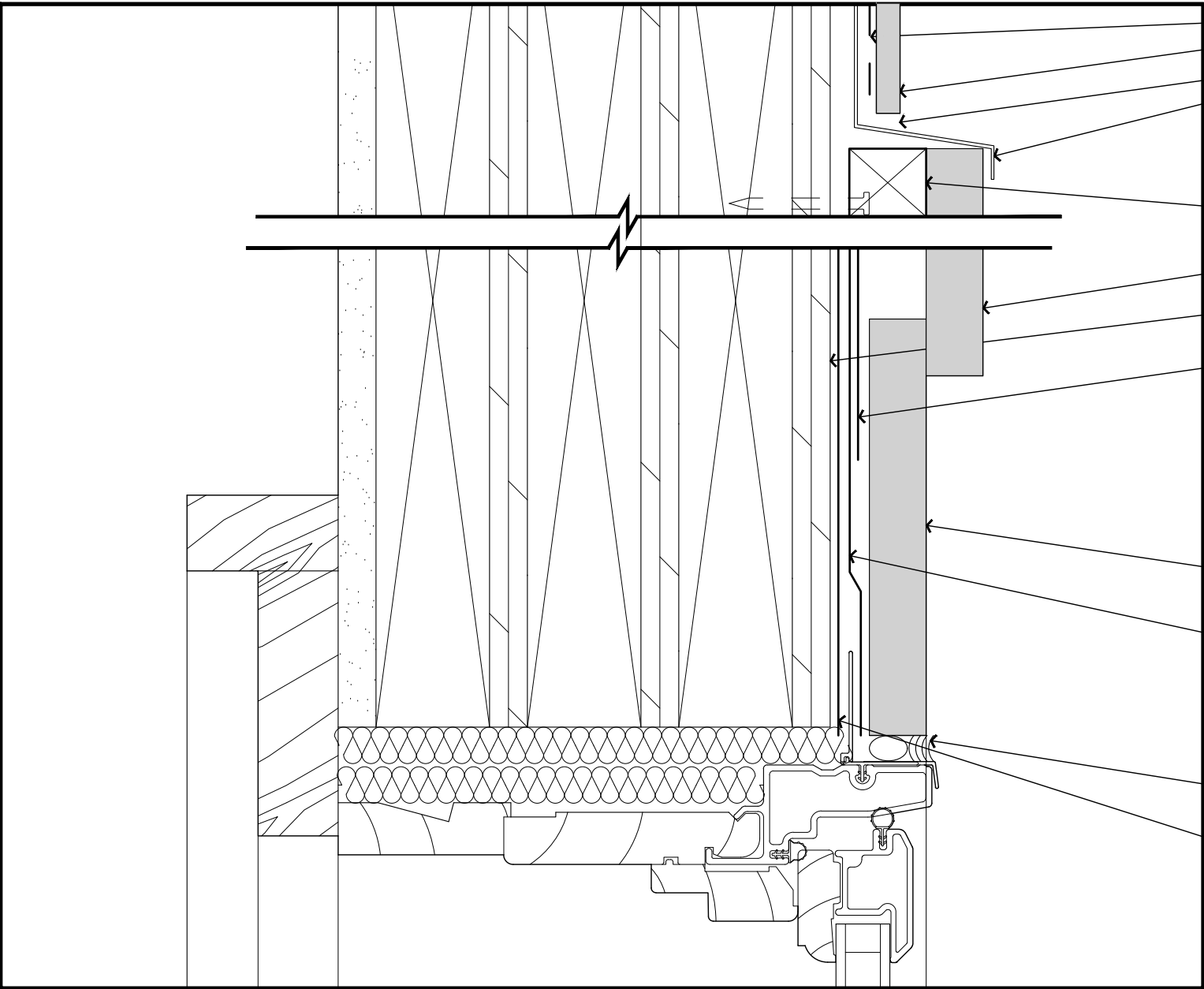


3 RENOVATED LEFT ELEVATION  
A101 1/4" = 1'-0"



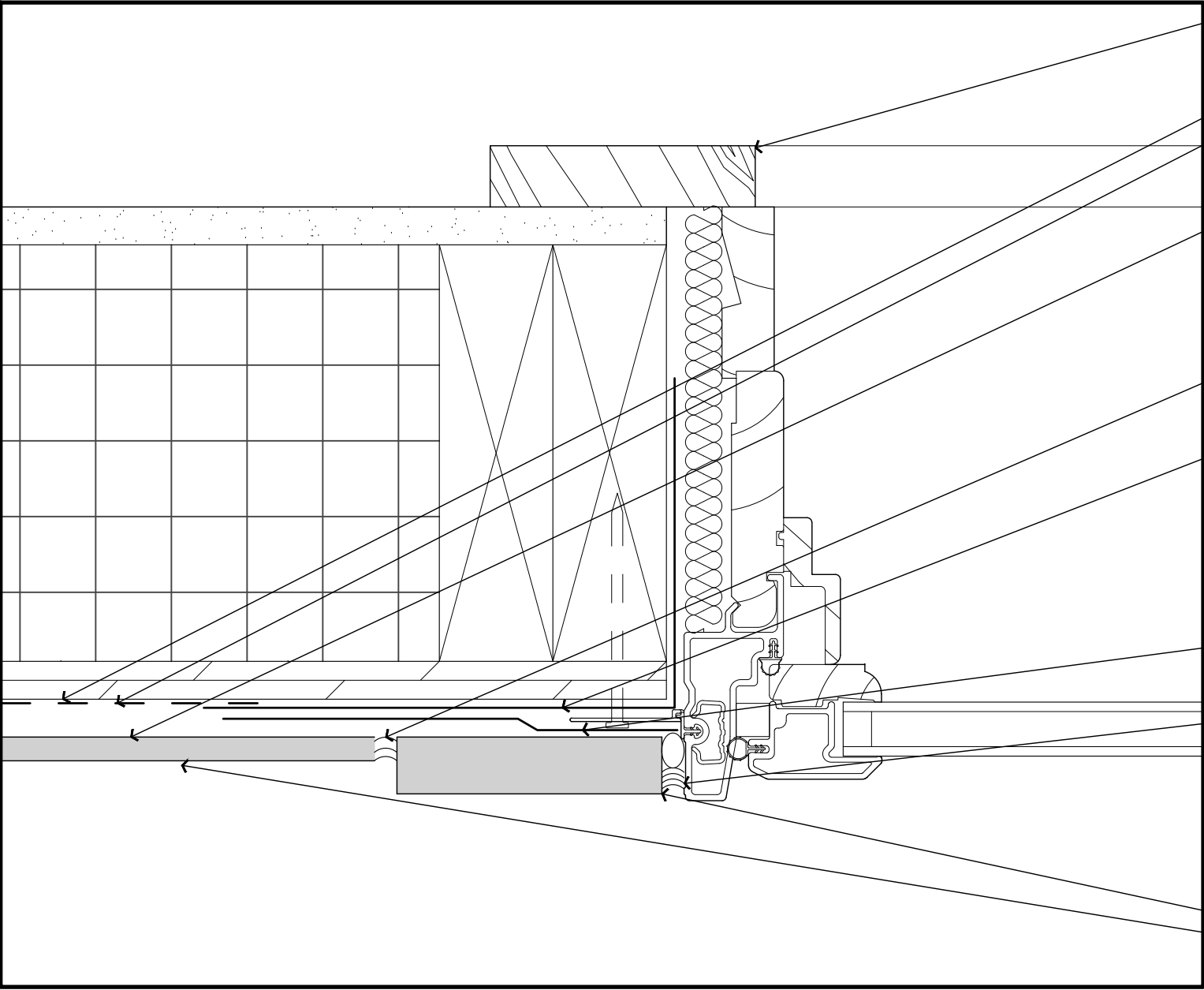
2 A501 INFILL FRAMING @ EXISING PORCH SLAB  
1" = 1'-0"

- RIGID FOAM INSULATION, TYP.
- SMOOTH HARDIEPANEL
- TYVEK DRAINWRAP WRB
- SHEATHING, SEE STRUCTURAL
- FINISH FLOORING AS SELECTED OVER VAPOR BARRIER
- 1x4 HARDIETRIM
- 2x6 TR SILL PLATES - SEE STRUCT. FOR CONNECTION DETAIL
- CONT. METAL FLASHING SET TO BRICK IN SEALANT BED
- SILL GASKET
- EXISTING PORCH SLAB EDGE
- SEE STRUCTURAL ENG. FOR CONNECTION DETAILS
- EXISTING CMU FOUNDATION



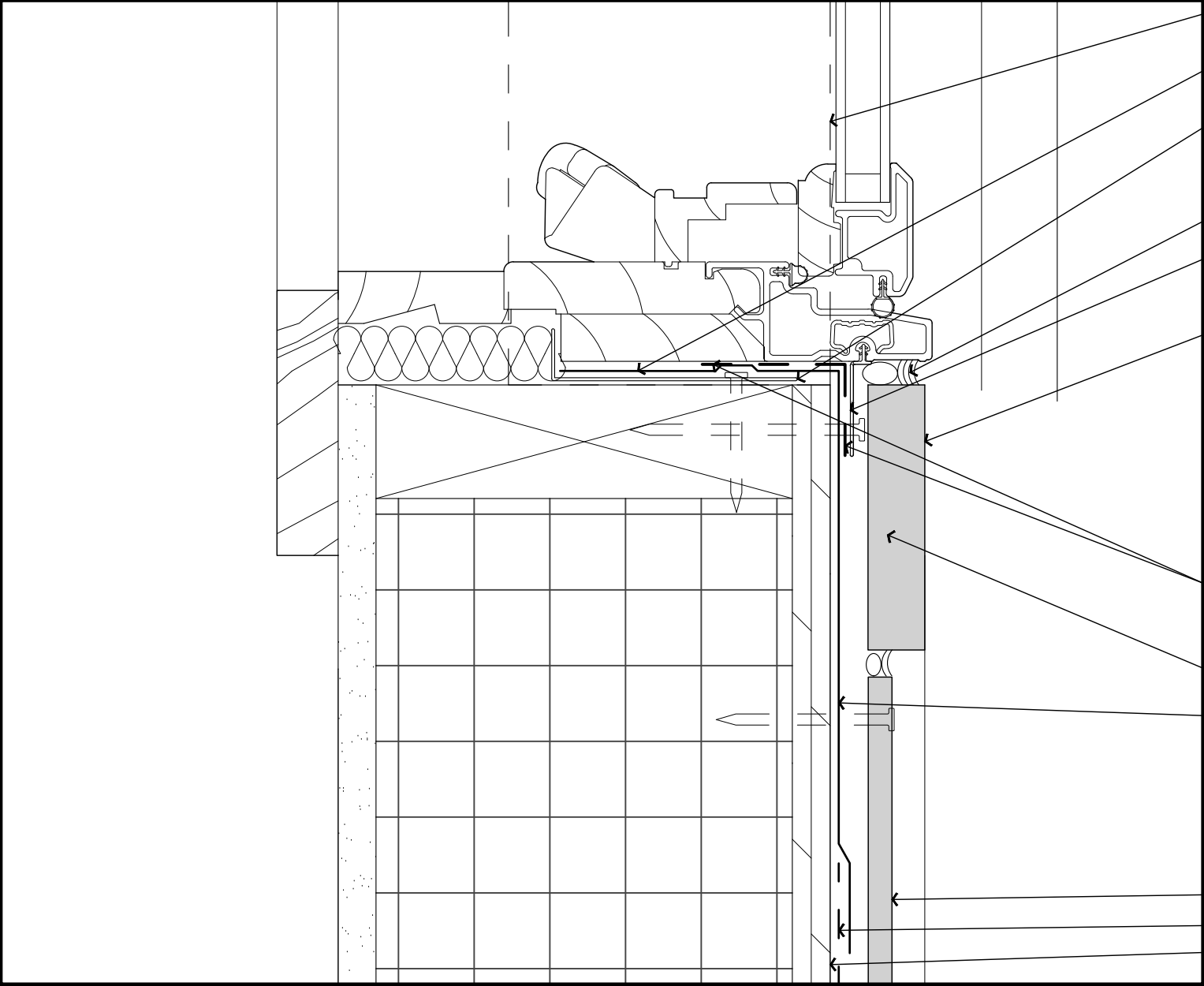
1A A501 WINDOW HEAD  
1" = 1'-0"

- TYVEK DRAINWRAP WRB
- EXISTING SIDING
- 1/2" CAP (NO SEALANT)
- ALUMINUM HEAD FLASHING WITH SIDE TURN-DOWNS - FLASHING TERMINATION TABS AT ENDS OF HEAD FLASHING
- TR. BLOCKING
- 1x8 BEAM TRIM (SEE ELEVATIONS)
- SHEATHING, SEE STRUCTURAL
- INSTALL THIRD LAYER OF 6" WIDE SAF HORIZONTALLY AT HEAD OVER WINDOW HEAD FLASHING - THIS FLASHING WILL OVERLAP THE SECOND LAYER OF HORIZONTAL SAF AT HEAD
- 1x4 HARDIETRIM
- INSTALL SECOND LAYER OF 6" WIDE SAF HORIZONTALLY AT HEAD OVER WINDOW FLANGE - THIS FLASHING WILL OVERLAP THE SECOND LAYER OF VERTICAL SAF AT JAMBS
- BACKER ROD AND SEALANT
- INSTALL FIRST LAYER OF 9" WIDE SELF-ADHESIVE FLASHING HORIZONTALLY AT HEAD DIRECTLY ON SHEATHING AND STOP AT WINDOW OPENING - FLASHING WILL OVERLAP FIRST LAYER OF VERTICAL SAF AT JAMBS. PRIME ALL SURFACES.



2B A501 WINDOW JAMB  
1" = 1'-0"

- INTERIOR WINDOW TRIM AND WALL FINISHES BY G.C./OWNER
- SHEATHING, SEE STRUCTURAL
- TYVEK DRAINWRAP WRB
- SEE A201-A302 FOR EXTERIOR SIDING MATERIAL
- CONT. SEALANT BETWEEN SIDING AND TRIM
- INSTALL FIRST LAYER OF 9" WIDE SELF-ADHESIVE FLASHING VERTICALLY AT JAMB DIRECTLY ON SHEATHING AND EXTEND INTO WINDOW TO ALIGN W/ FLASHING AT SILL - FLASHING WILL OVERLAP HORIZONTAL SAF AT SILL - PRIME ALL SURFACES
- INSTALL SECOND LAYER OF 6" WIDE SAF VERTICALLY AT JAMB OVER WINDOW FLANGE
- BACKER ROD AND SEALANT
- 1x4 HARDIETRIM CASING
- SMOOTH HARDIEPANEL
- NOTE: INSTALL SILL "PAN" FLASHING PER ASTM E 212



2C A501 WINDOW SILL  
1" = 1'-0"

- EXTEND SAF UP 8" AT WALL JAMBS, TYP.
- PROVIDE PVC SLOPED SILL BETWEEN SAF AND R.O.
- CONT. 20 OZ. COPPER FLASHING THE LENGTH OF WINDOW SILL AND TIGHT AGAINST JAMBS
- BACKER ROD AND SEALANT
- WINDOW FLANGE OVER "ULTRA-LATH"
- 1x4 HARDIETRIM APRON
- APPLY "ULTRA-LATH" 1/2" WIDE BY THE LENGTH OF THE WINDOW FLANGE TO WATERPROOF MEMBRANE UNDER SILL FLANGE
- CONT. SEALANT BETWEEN LAP SIDING AND TRIM
- INSTALL 9" WIDE SELF-ADHESIVE FLASHING - PRIME ALL SURFACES - EXTEND FLASHING INTO WINDOW OPENING TO THE TOP OF COPPER FLASHING - LAP FLASHING ONTO ZIP SHEATHING AND EXTEND LEG DOWN AND OVER ANOTHER LAYER OF SAF BELOW
- SMOOTH HARDIEPANEL
- TYVEK DRAINWRAP WRB
- SHEATHING, SEE STRUCTURAL
- NOTE: INSTALL SILL "PAN" FLASHING PER ASTM E 212

NOT FOR CONSTRUCTION

© COPYRIGHT 2025 DePAUW ARCHITECTS LLC  
THIS DRAWING IS THE PROPERTY OF THE ARCHITECT AND IS NOT TO BE REPRODUCED IN WHOLE OR IN PART BY ANY MEANS OR METHOD WITHOUT THE EXPRESS WRITTEN CONSENT OF THE ARCHITECT. ANY UNAUTHORIZED REPRODUCTION OR REUSE OF THESE DOCUMENTS WILL RESULT IN LEGAL ACTION.

A PORCH ENCLOSURE FOR  
THE DUNCAN RESIDENCE  
4 TABBY SHELL ROAD  
TABBY ROADS  
BLUFFTON, SC 29910

REVISIONS	
PROJECT NO.	2502
CONTACT	LRD
DATE	4.28.2025
SHEET	