

Camera Upgrade and Expansion

This presentation is a proposal focused on our Public Safety Cameras for the Town of Bluffton. Currently we have many of our cameras focused in the Downtown Bluffton area. The current cameras are good for monitoring purposes but provide minimal assistance in the prevention and solving of crimes that are committed here in Bluffton. The Bluffton Police Department is seeking to expand the camera system while upgrading technology to help our officers prevent, detect, and solve crime that occurs. Specific Investigative Technology exists; however, it is not available with our current camera system that we have. This proposal provides an updated camera technology that will allow us to track vehicles involved in a crime and expand our camera coverage throughout the Town of Bluffton.

<i>Budget Year</i>	Phase 1- Purchase (Year 1-3)	Phase 2- Addition (3-5 years)	Phase 3- Addition if needed (5-7 years)	All in one
<i>FY25</i>	89,050	0	0	200, 350
<i>FY26</i>	74,500	0	0	164,500
<i>FY27</i>	74,500	43,800 (118,300 total)	0	164,500
<i>FY28</i>	74,500	36,000 (110,500)	0	164,500
<i>FY29</i>	74,500	36,000 (110,500)	67,500 (178,000)	164,500
<i>FY30</i>	74,500	36,000 (110,500)	54,000 (164,500)	164,500

Below is a projected idea for mapping for Phase 1. This Phase will cover all entrances and exits coming in and out of the Town. There are two types of cameras that will be installed during this phase:

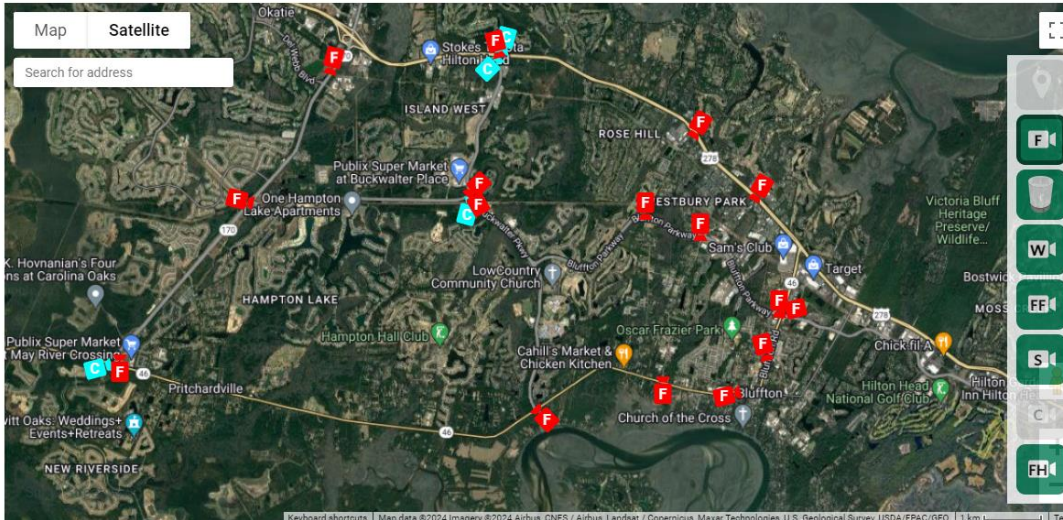
Phase 1:

Falcon Cameras (17): There are 17 Falcon Cameras that are part of this phase of installation. They will be placed on the main roadways and focused on the entry and exit to the main roadways. These cameras have LPR (License Plate Reader Capabilities) as well as Vehicle Print Technology. This identifies vehicles by make, color, and decals. This transforms footage into actionable evidence related to a crime. These cameras have a red square with an F on them in the map below.

Condor Cameras (4): These are 4 live recorded cameras that can be rotated/moved by remote control to cover a specific area as needed. These cameras record on a continuous basis and the data is stored in a cloud-based solution, eliminating the need for servers for up to 30 days. These cameras have a blue square with a "C" written on them in the map below.

Flock Safety Gateway (128 integrated PS Cameras): This allows Wing is a critical new integration for law enforcement because unlike buying new hardware, police can upgrade their hundreds of existing IP cameras with the power of Flock Safety's Vehicle Fingerprint technology. Wing allows all IP camera

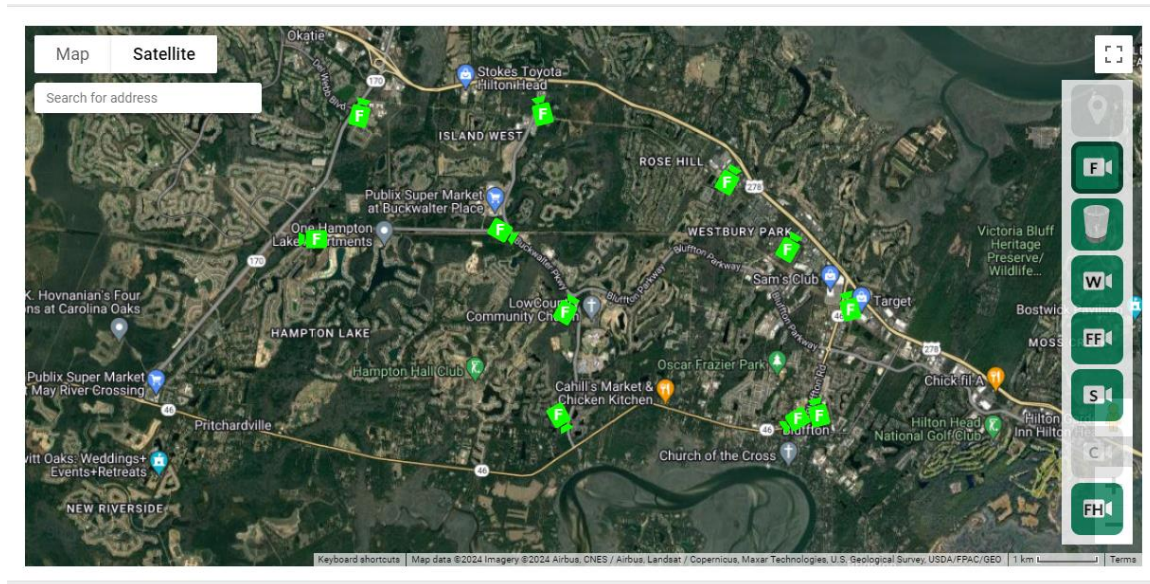
footage to run through Flock Safety's Google-like search interface, which allows police to perform ALPR analysis where applicable, search their footage by a vehicle's description, and most importantly, save thousands of man hours when time is of the essence. This first phase will integrate 128 Public Safety Cameras that are already in place throughout the downtown area of Bluffton.



Phase 2

Below is a projected idea for mapping for Phase 2. This Phase will cover the internal roadways within the Town of Bluffton. There are 12 additional Falcon Cameras (with ALPR capabilities) that will be installed during this phase:

Falcon Cameras (12): There are 12 Falcon Cameras that are part of this phase of installation. These cameras have a green square with an F on them in the map below. They will be placed in areas based upon the total calls for service we experience each year. They will remain on the main and adjoining roadways and focused on the travel internally within the Town of Bluffton. These cameras have LPR (License Plate Reader Capabilities) as well as Vehicle Print Technology. This identifies vehicles by make, color, and decals. This transforms footage into actionable evidence related to a crime.

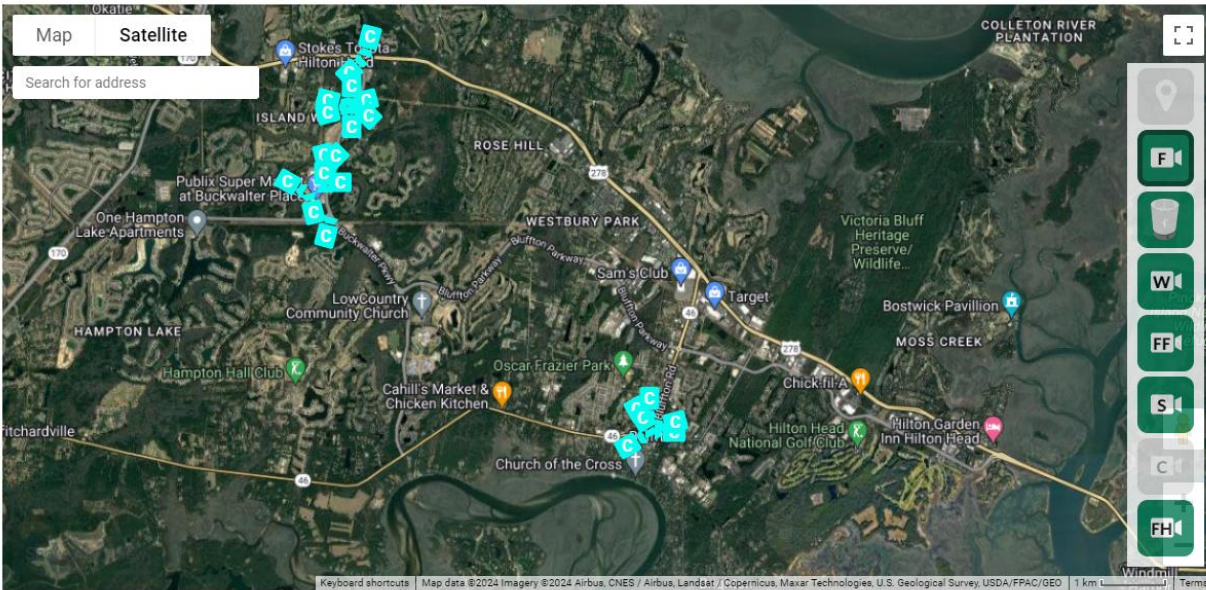


Phase 3

Below is a projected idea for mapping for Phase 3. This Phase will cover areas within the Town of Bluffton where there is no camera coverage. As of right now there are 18 Condor Cameras (Live Cameras) projected for this Phase. The placement of these cameras will be based upon areas within Town that are not covered. This is dependent upon several factors:

1. How many subdivisions have Flock Cameras that we can tie into. Currently there are two subdivisions (Pine Ridge and The Lakes at New Riverside)
2. Check with business (Gas Stations and Shopping Centers) to see if we can Bridge their cameras and allow us to view them (this would expand our camera system without little to no cost.
3. Review calls for service and base a need for placement of cameras in specific areas based upon call volume.

Condor Cameras (18): There are 18 Condor Cameras that are part of this phase of installation. These cameras have a blue square with an C on them in the map below. They will be placed in areas based upon the total calls for service we experience each year. We have identified that the majority of our calls come from the shopping centers/commercial areas within town limits. These cameras currently are planning to be placed in our shopping area along Buckwalter Parkway as well as Downton Bluffton. These cameras are live recorded cameras that can be rotated/moved by remote control to cover a specific area as needed. These cameras record on a continuous basis and the data is stored in a cloud-based solution, eliminating the need for servers for up to 30 days. These cameras have a blue square with a “C” written on them in the map below.



Privacy/Audit: These cameras capture objective evidence, without capturing the identity of the driver and passengers, that create and deliver unbiased investigation leads to law enforcement. While searching footage, law enforcement agencies must enter reason codes to verify the legitimacy of the search and create an audit trail. Authorized users are required to go through training to use the system.

Flock Safety customers commit not to use the images to work with repossession companies, traffic enforcement, revenue collection, unpaid fines, or towing companies. The system is not used for facial recognition or utilized for any personally identifiable information such as name, phone number, or address.

The Bluffton Police Department will conduct quarterly audits for usage of the Flock Camera and their technologies. These audits will show every search that was run through the system and who conducted that search. In addition, a case number is required to be attached to the search preventing random searches from occurring. The audit will be presented to the Law Enforcement Citizen Advisory Committee to provide oversight of the program.

Maintenance:

These fees include maintenance fees associated with all cameras purchased from Flock. Flock services, maintains, and take care of all cameras included in the subscription fee. **(Include current fees we pay for our current camera system).**

Recommendation:

It is my recommendation that we utilize the step plan for the expansion and upgrading of our camera system. This will allow us to implement the system by stages dependent upon call volume in specific areas. This will give us an opportunity to evaluate every three years and make changes to future locations or cameras as needed. Although these cameras can be moved upon request, each camera has a different function. The phased approach will allow us to efficiently determine what kind of camera and the location we need it for future expansion.