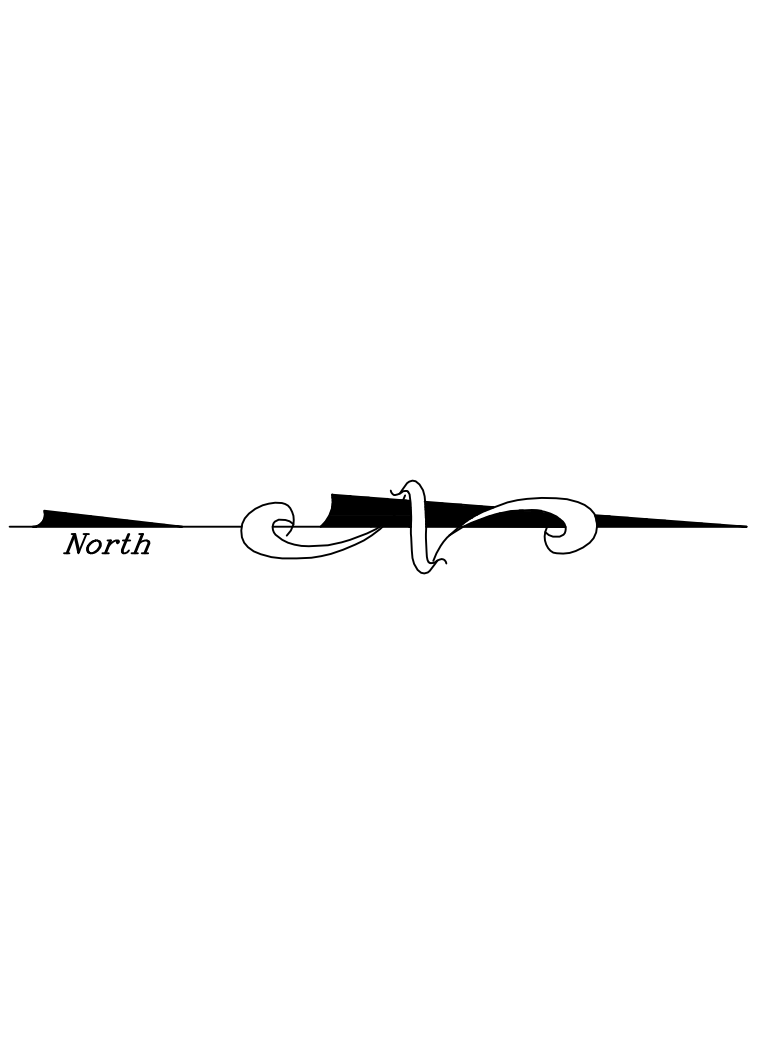
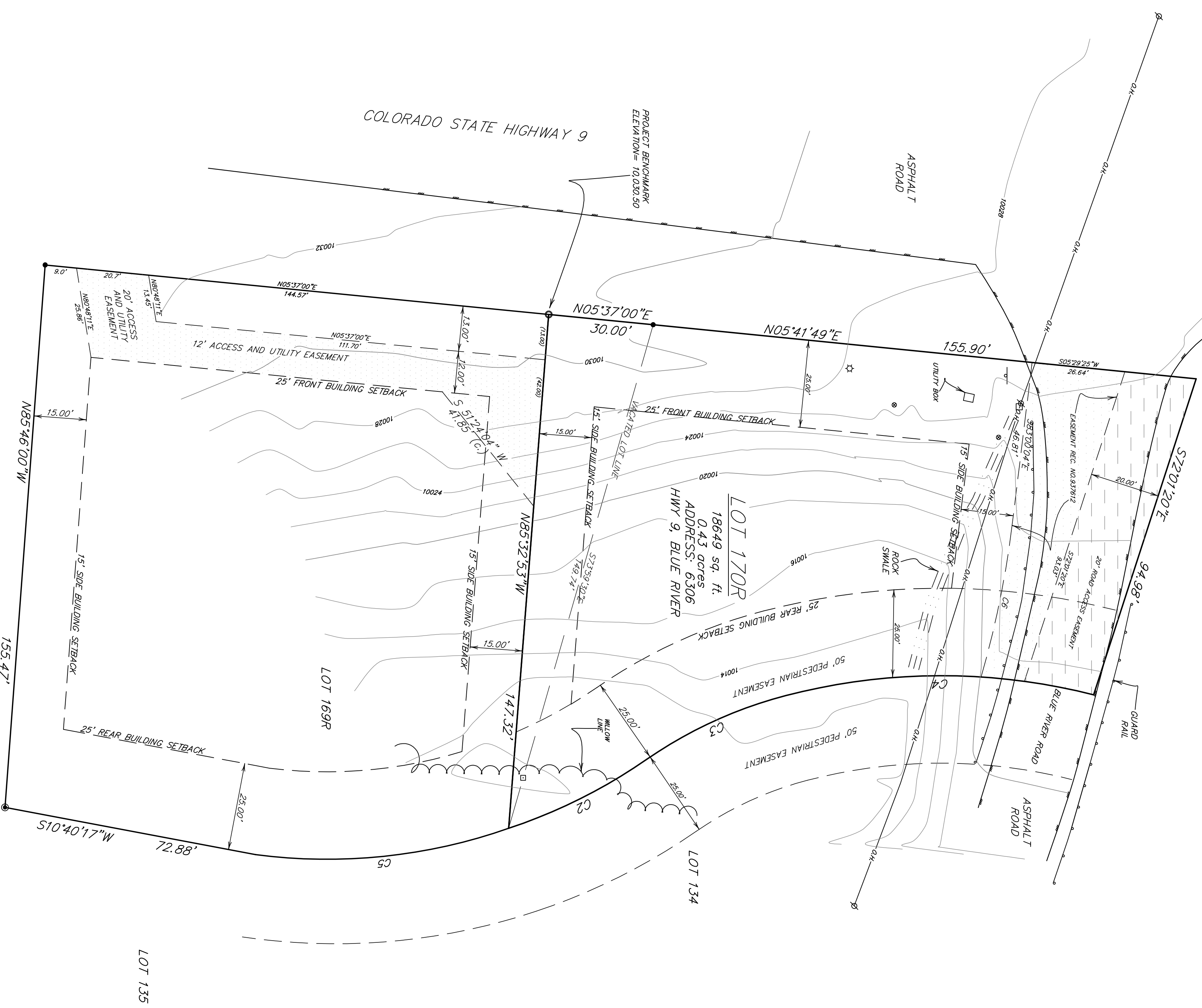


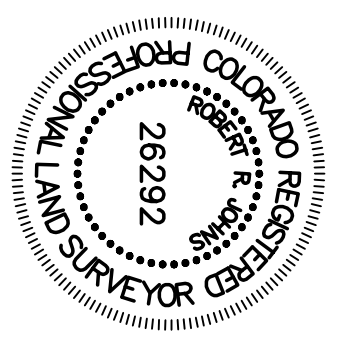
A TOPOGRAPHIC MAP OF  
**LOT 170R BLUE RIVER ESTATES, MOUNTAIN VIEW SUB**  
 LOCATED IN SEC. 19 & 30, TOWNSHIP 7 SOUTH, RANGE 77 WEST OF THE 6TH P.M.  
 ACCORDING TO THE PLAT RECORDED 1/20/16 AT REC. NO. 1102615  
 SUMMIT COUNTY, COLORADO



DATE OF FIELD SURVEY: 09/27/2022  
 CONTOUR INTERVAL = 2 FEET  
 ELEVATIONS BASED ON HAND HELD GPS

- LEGEND**
- FOUND REBAR & PLASTIC CAP (PLS 19588)
  - FOUND REBAR & PLASTIC CAP (PLS 38266)
  - FOUND #4 REBAR
  - WITNESS CORNER FOUND REBAR & ALUMINUM CAP (PLS 16406)
  - GAS LINE MARKER
  - UTILITY PEDESTAL
  - ∅ UTILITY POLE
  - O.H.— OVER HEAD UTILITY
  - SIGN
  - ☆ GREEN UTILITY MARKER

CURVE	LENGTH	RADIUS	CHORD	BEARING	DELTA
C1	44.231	155.291	44.091	N85°21'53"W	167°19'24"
C2	88.91	156.44	87.261	S25°35'24"E	40°02'33"
C3	23.86	156.44	22.639	N05°05'56"W	28°51'02"
C4	44.21	278.00	44.16	N72°26'45"W	97°05'39"



Drawn ESH	Dwg 170RTP	Project 22580
Checked RPL	Date 10/20/2022	Sheet 1 of 1

**R-A-N-G-E**  
ENGINEERS & SURVEYORS

P.O. Box 589  
Silverthorne, CO 80498 970-468-6281

THIS DOCUMENT IS A PRELIMINARY PLAN. THE PLAT CONTAINS THE FINAL SURVEY DATA. THE SURVEYOR'S RESPONSIBILITY IS TO THE CLIENT AND NOT TO THE PUBLIC. THE SURVEYOR'S LIABILITY IS LIMITED BY THE PROFESSIONAL LAND SURVEYOR ACT AND THE RULES OF THE BOARD OF PROFESSIONAL LAND SURVEYORS. THE SURVEYOR'S LIABILITY IS LIMITED BY THE PROFESSIONAL LAND SURVEYOR ACT AND THE RULES OF THE BOARD OF PROFESSIONAL LAND SURVEYORS. THE SURVEYOR'S LIABILITY IS LIMITED BY THE PROFESSIONAL LAND SURVEYOR ACT AND THE RULES OF THE BOARD OF PROFESSIONAL LAND SURVEYORS.