

PRINCE GEORGE'S COUNTY  CIS



Bladensburg Flood Risk Reduction Project

Edmonston Channel & Quincy Run

Preliminary Design Overview

Town of Bladensburg Public Meeting

November 10, 2025

Clean Water Partnership Team Members

- Joanna Smith
Prince George's County DPW&T – OSDM Associate Director
- Sonya Williams
CIS - Program Manager
- Fernando Benitez, PE
Stantec - Project Manager



AGENDA

PROJECT BACKGROUND

PROPOSED DESIGN

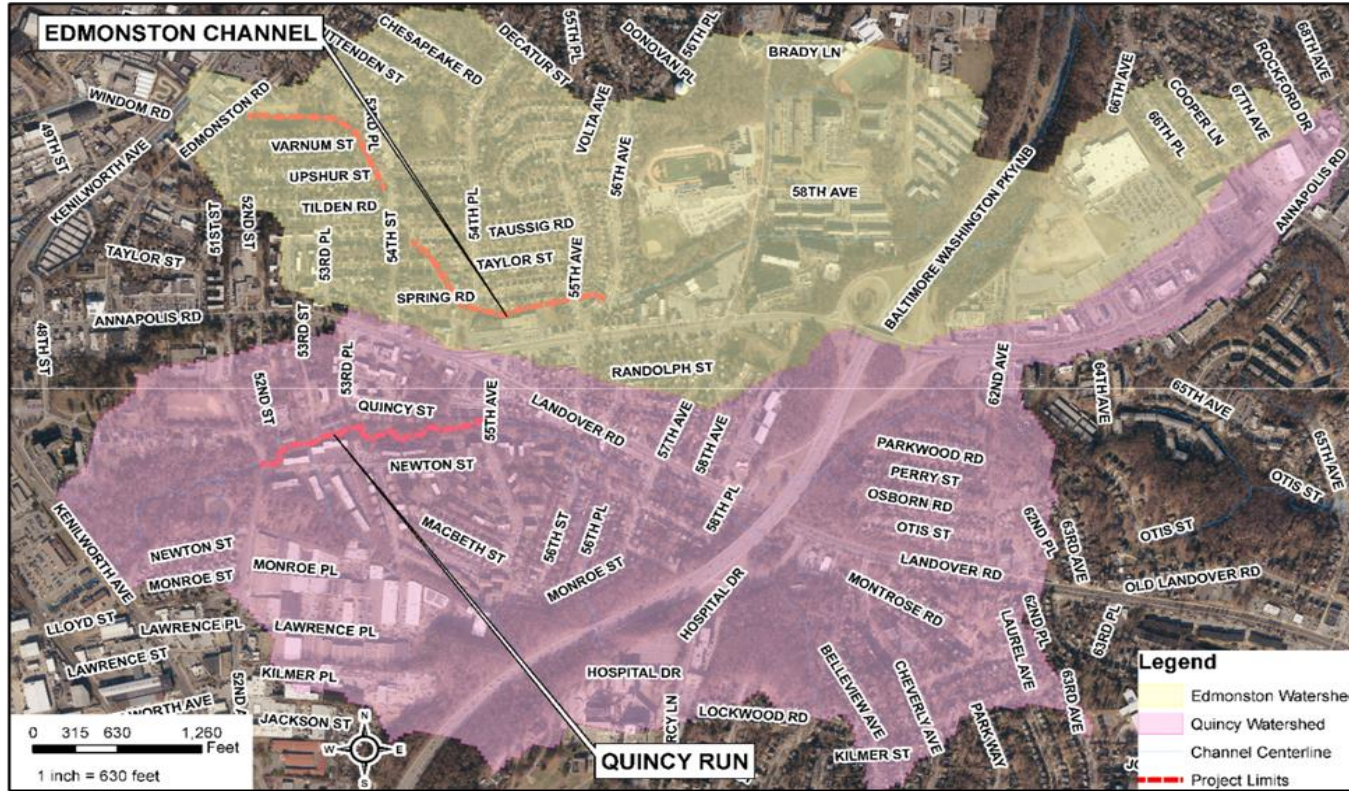
- EDMONSTON CHANNEL
- QUINCY RUN

NEXT STEPS

QUESTIONS

PROJECT BACKGROUND

PROJECT BACKGROUND



EXISTING CONDITIONS CONSIDERATIONS

- Site visits
- Topographic and subsurface utility surveys
- Test pits Hydrologic/Hydraulic Modeling

DESIGN CONSIDERATIONS

- First floor elevation for homes
- Utility relocation impacts
- Traffic pattern impact evaluation
- Existing roadway impacts



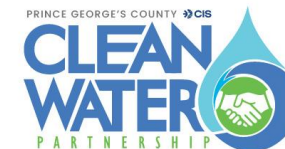
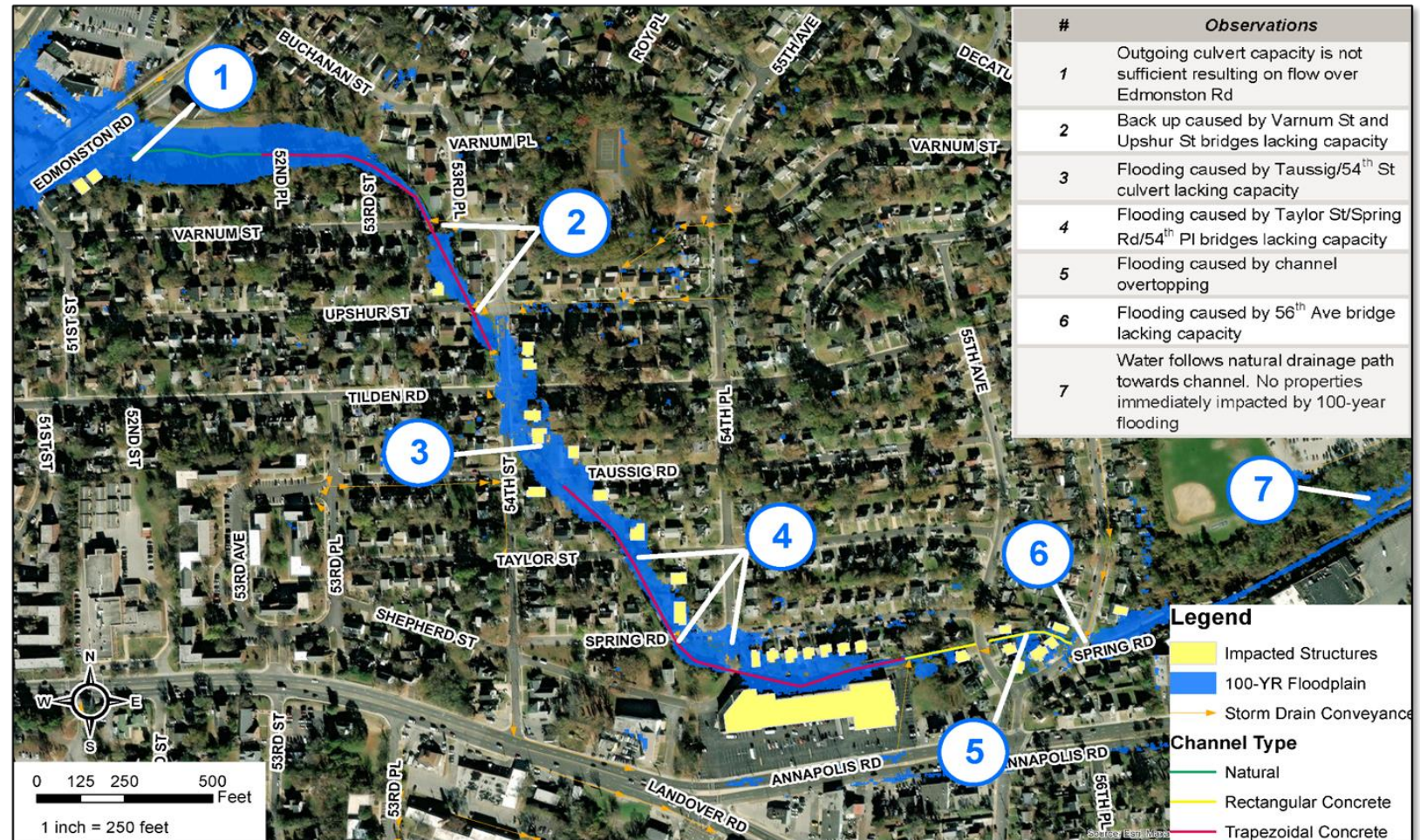
Edmonston Channel: Hydrologic/Hydraulic Modeling Results

IMPACTED STRUCTURES

- 100 Year Storm: 29 Structures
- 10 Year Storm: 12 Structures

DEFICIENCY

- Culvert/Bridge Capacity



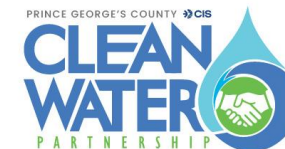
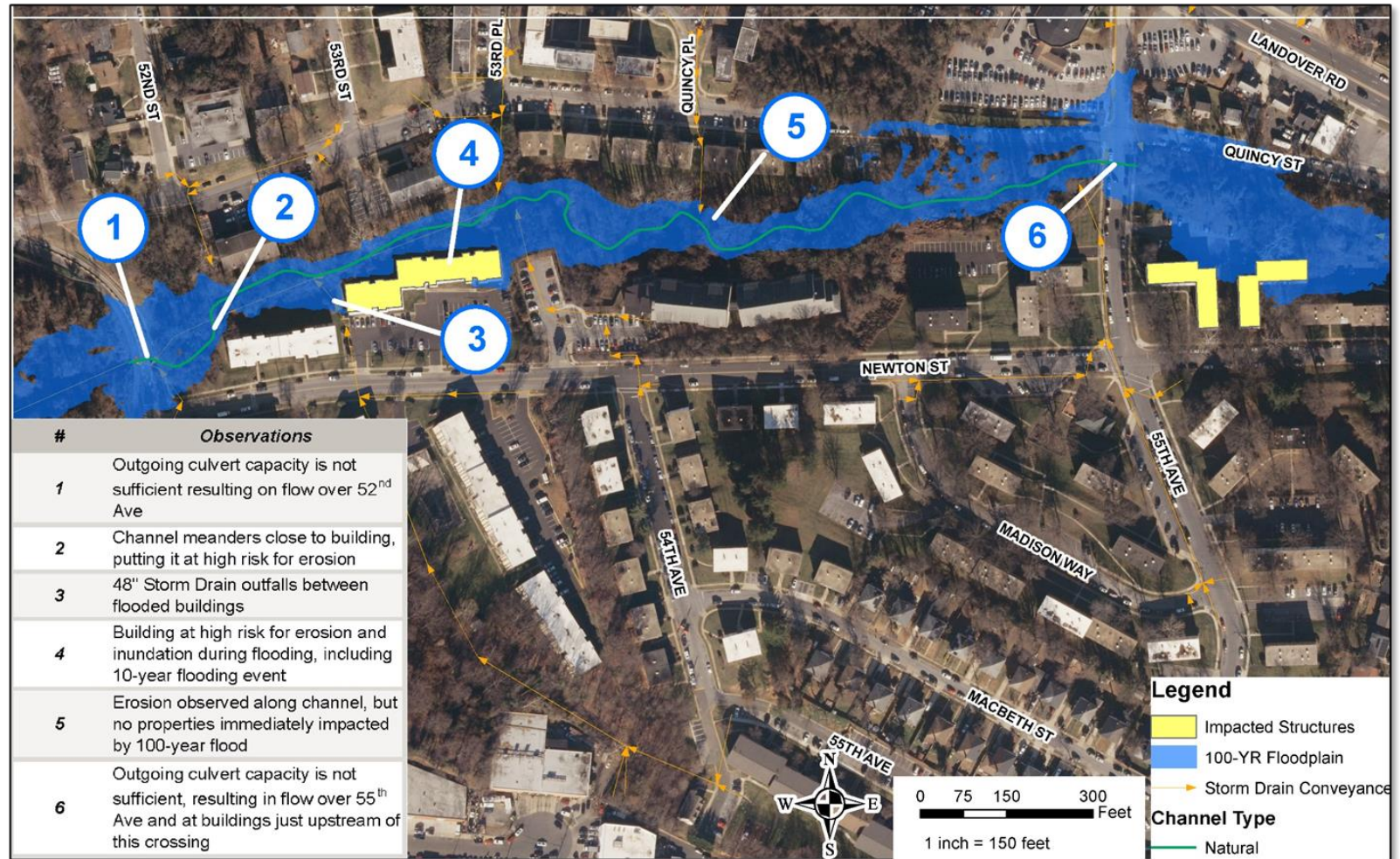
Quincy Run: Hydrologic/Hydraulic Modeling Results

IMPACTED STRUCTURES

- 100 Year Storm: 7 Structures
- 10 Year Storm: 4 Structures

DEFICIENCY

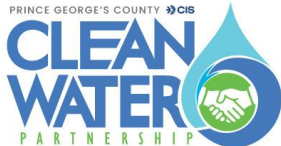
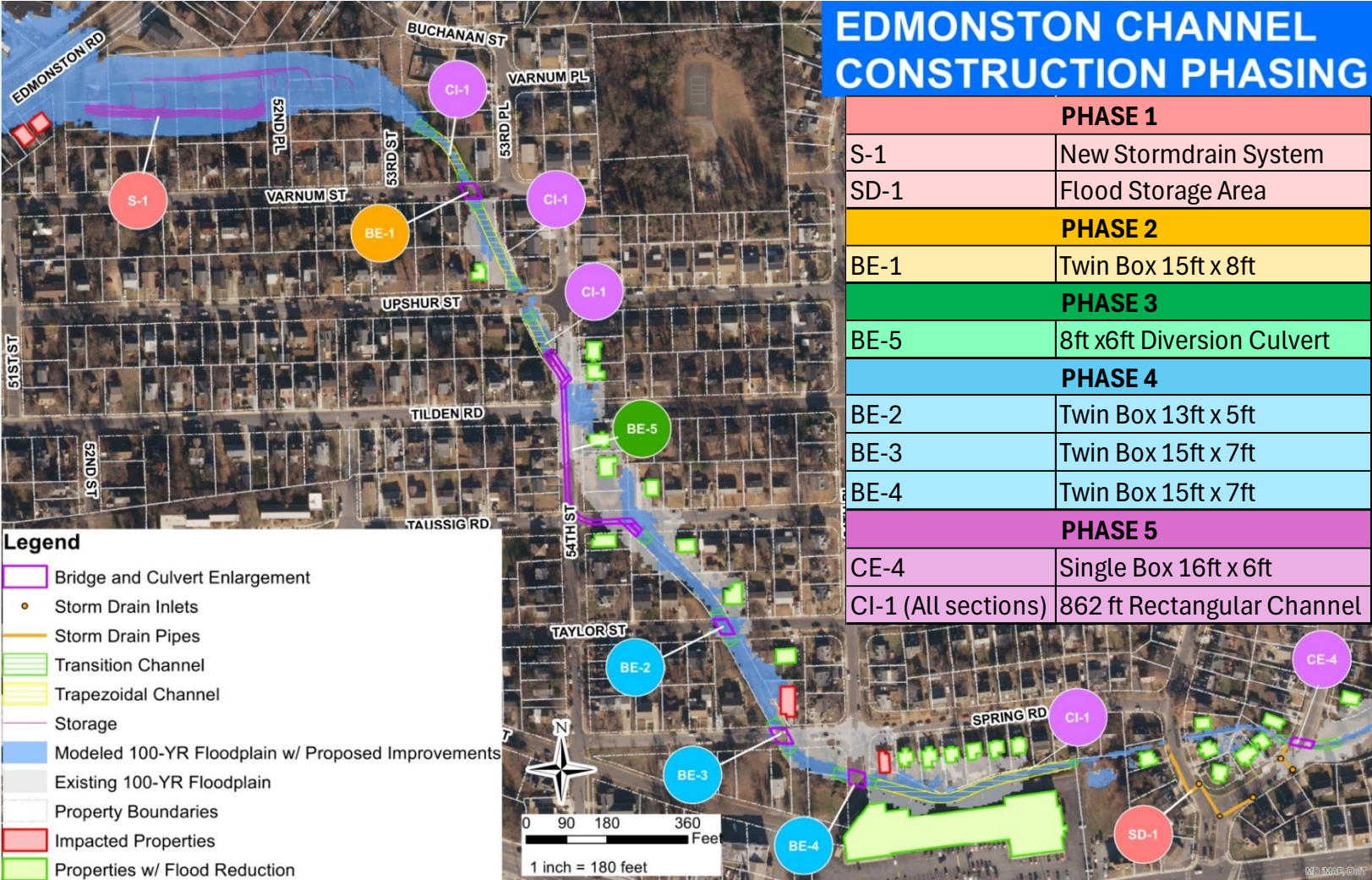
- Culvert/Bridge Capacity
- Low-Lying Areas along Channel



PROPOSED DESIGN SOLUTIONS

EDMONSTON CHANNEL

Edmonston Channel: Construction Phasing Plan



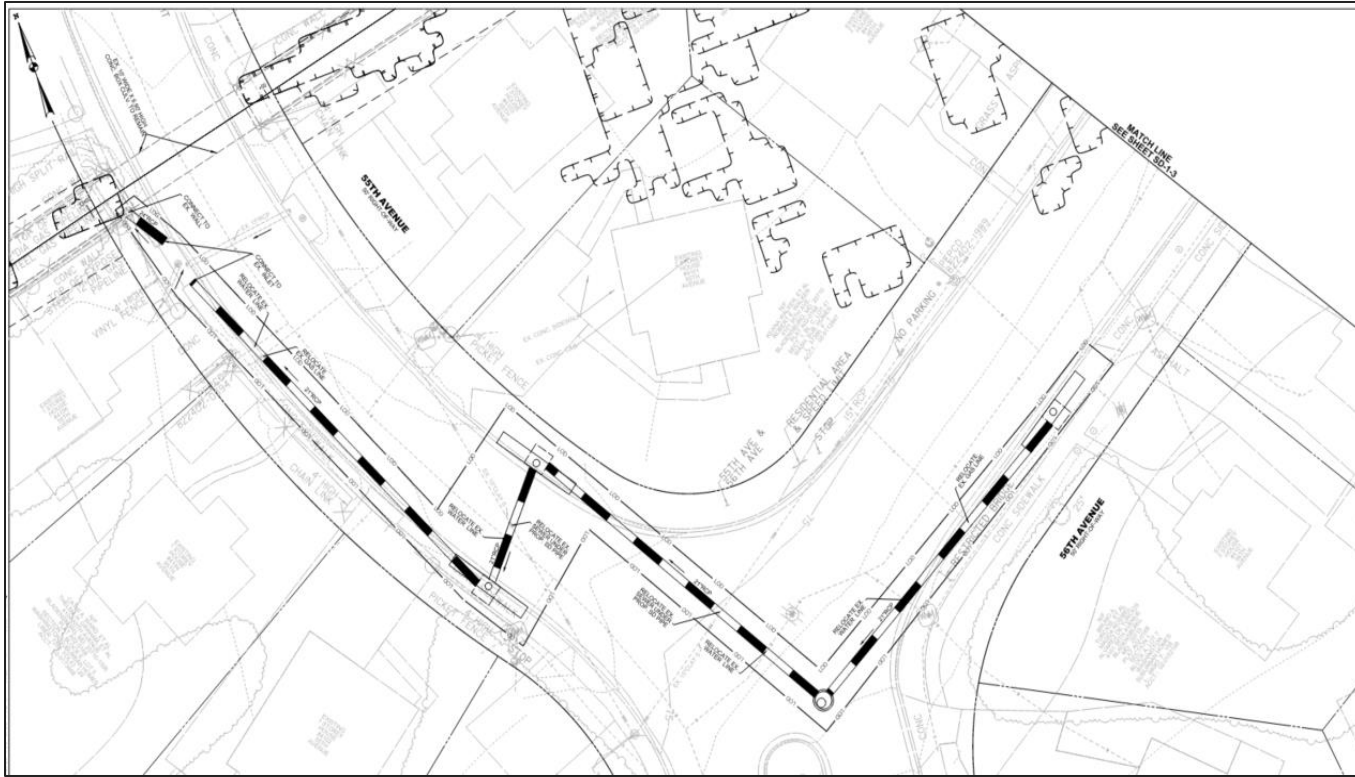
Edmonston Channel: Flood Storage (S-1)

Increase Flood Storage Capacity

- WSSC Owned Property

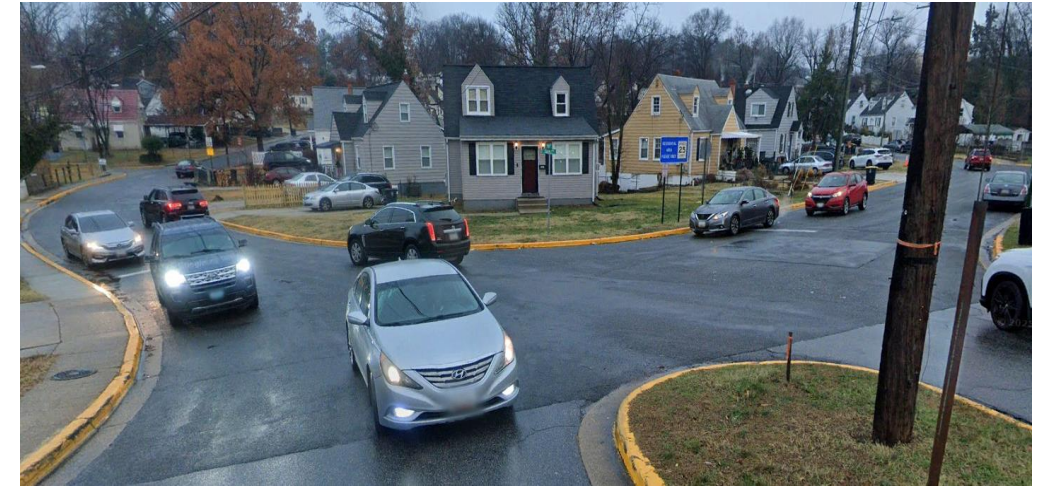


Edmonston Channel: Storm Drain Improvements (SD-1)

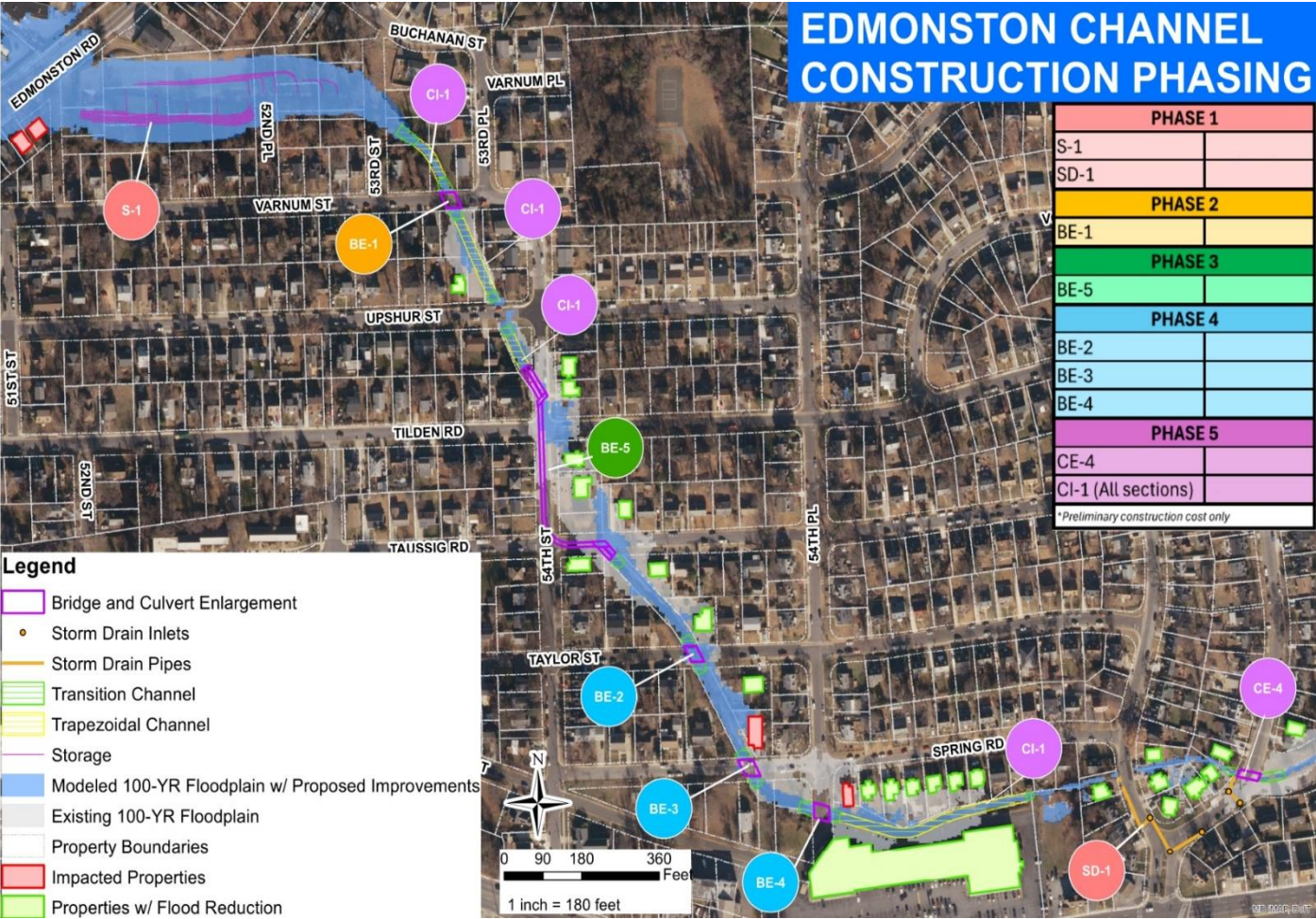


Storm Drain Improvements

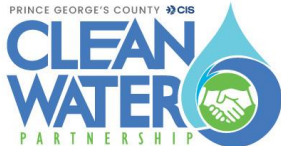
- Along 55th Ave & 56th Ave



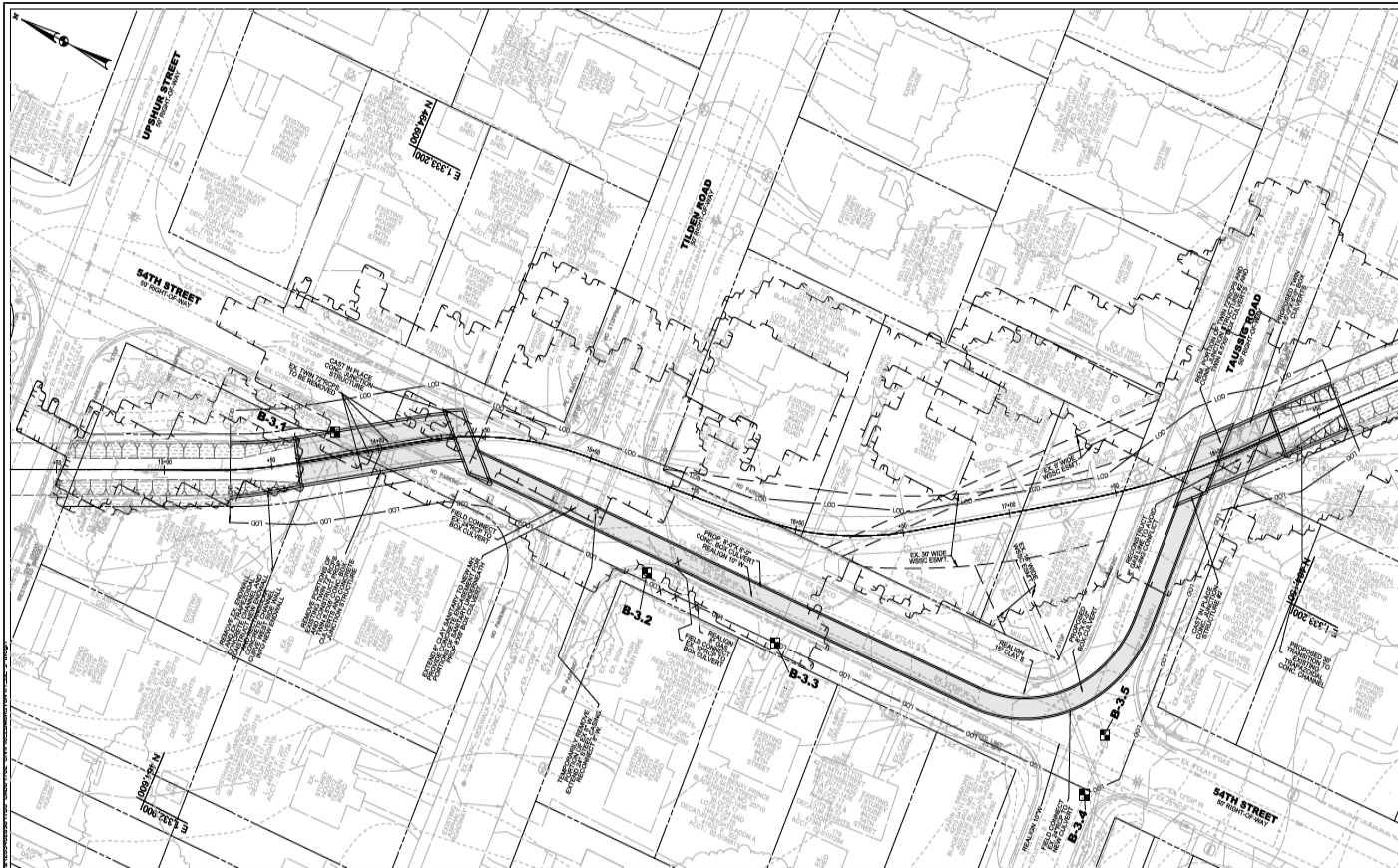
Edmonston Channel: Culvert Improvements



Phasing	Location	Size
2	(BE-1) @ Varum St	Twin Box 15ft x 8ft
4	(BE-2) @ Taylor St	Twin Box 13ft x 5ft
4	(BE-3) @ Spring Rd	Twin Box 15ft x 7ft
4	(BE-4) @ 54 th Pl	Twin Box 15ft x 7ft
5	(CE-4) @ 56 th Ave	Single Box 16ft x 6ft



Edmonston Channel: Culvert at Taussig Rd (BE-5)

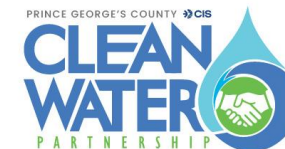


Culvert Improvements at Taussig Rd

- Most impactful and transformational design



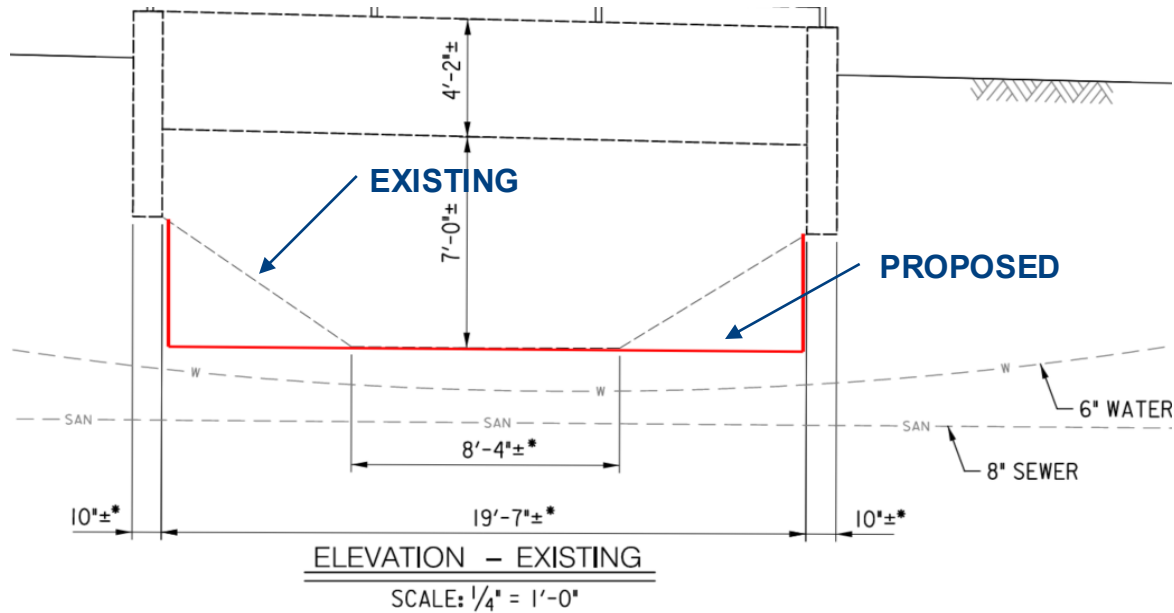
Existing 72" Culvert at Taussig Rd



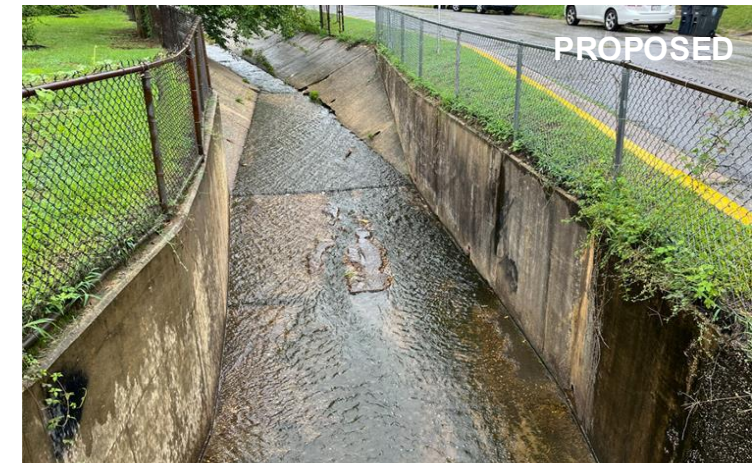
Edmonston Channel: Concrete Channel Improvements

Channel Segments

- Flood Storage Area to Varnum St.
- Varnum St. to Upshur St.
- Upshur to 54th St.
- 54th St. to 55th St.



Trapezoidal Concrete Channel



Rectangular Concrete Channel



ENGINEERING FINDINGS

QUINCY RUN

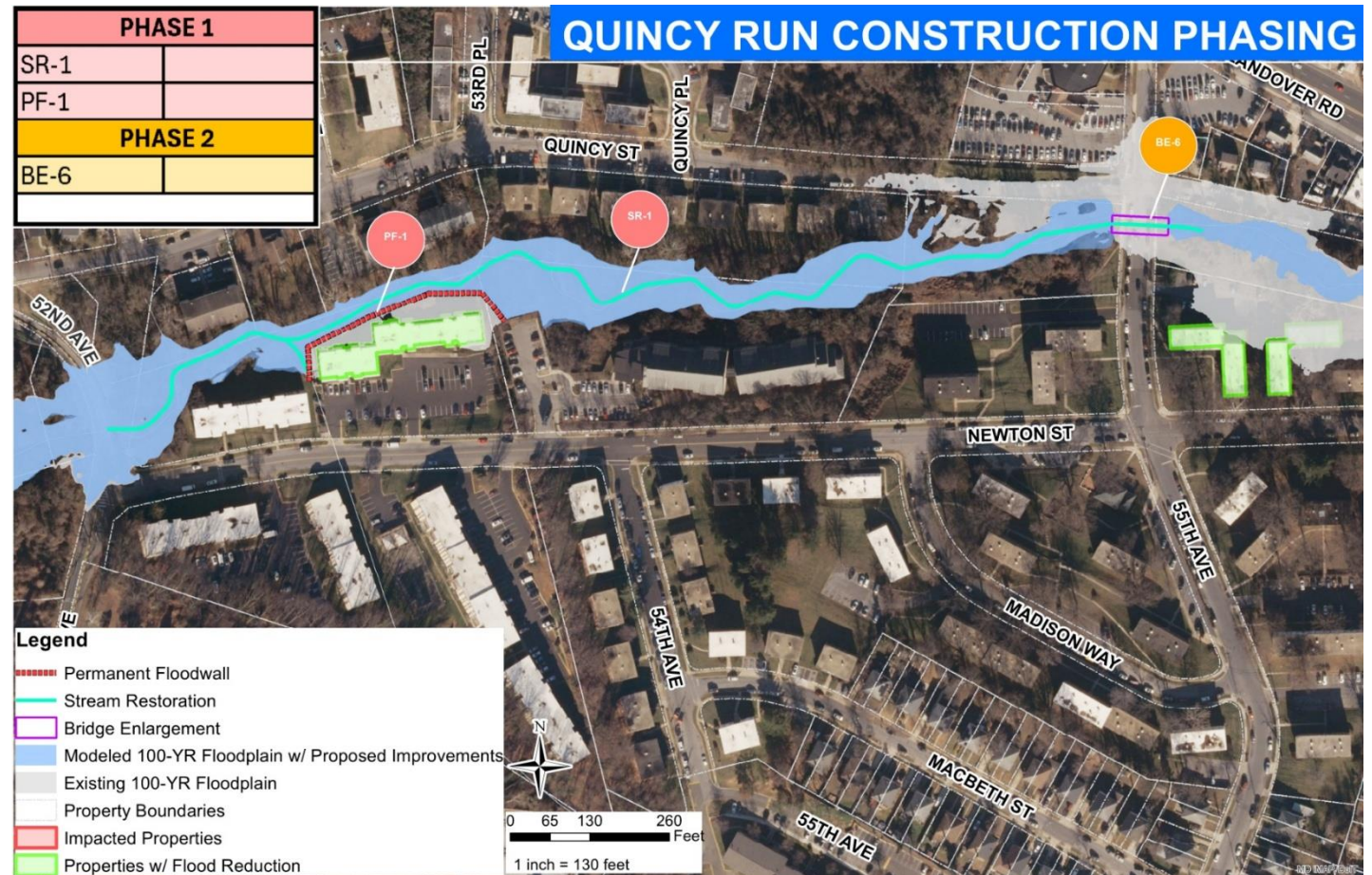
Grounded in Partnership → Focused on Impact



Quincy Run: Potential Construction Phasing Plan

Strategies Under Consideration

- Permanent Flood Wall
- Stream Restoration
- Bridge Enlargement



NEXT STEPS

Grounded in Partnership → Focused on Impact



Next Steps

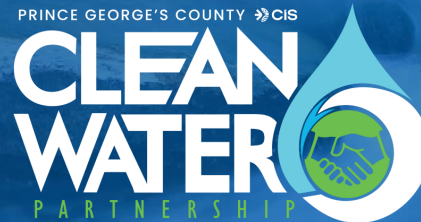
- Edmonston Channel – Flood Storage (S-1)
- Edmonston Channel - Storm Drain Improvements (SD-1)
- Edmonston Channel - Culvert at Taussig Rd (BE-5)



QUESTIONS/COMMENTS

Thank you!

Sonya Williams
Sonya.Williams@CISolutions.com



9475 Lottsford Road, Suite 100
Largo, Maryland 20774
info@thecleanwaterpartnership.com