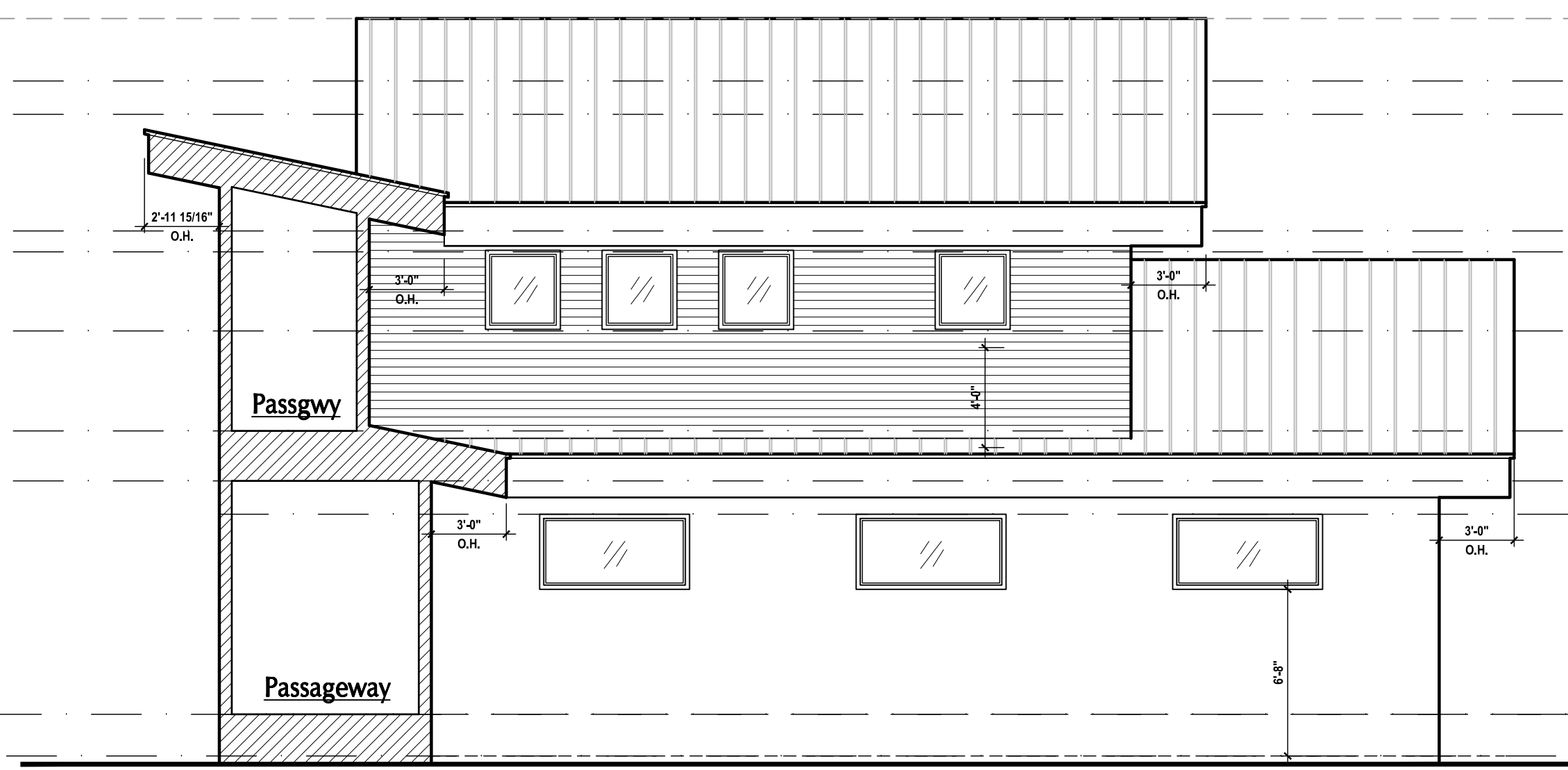
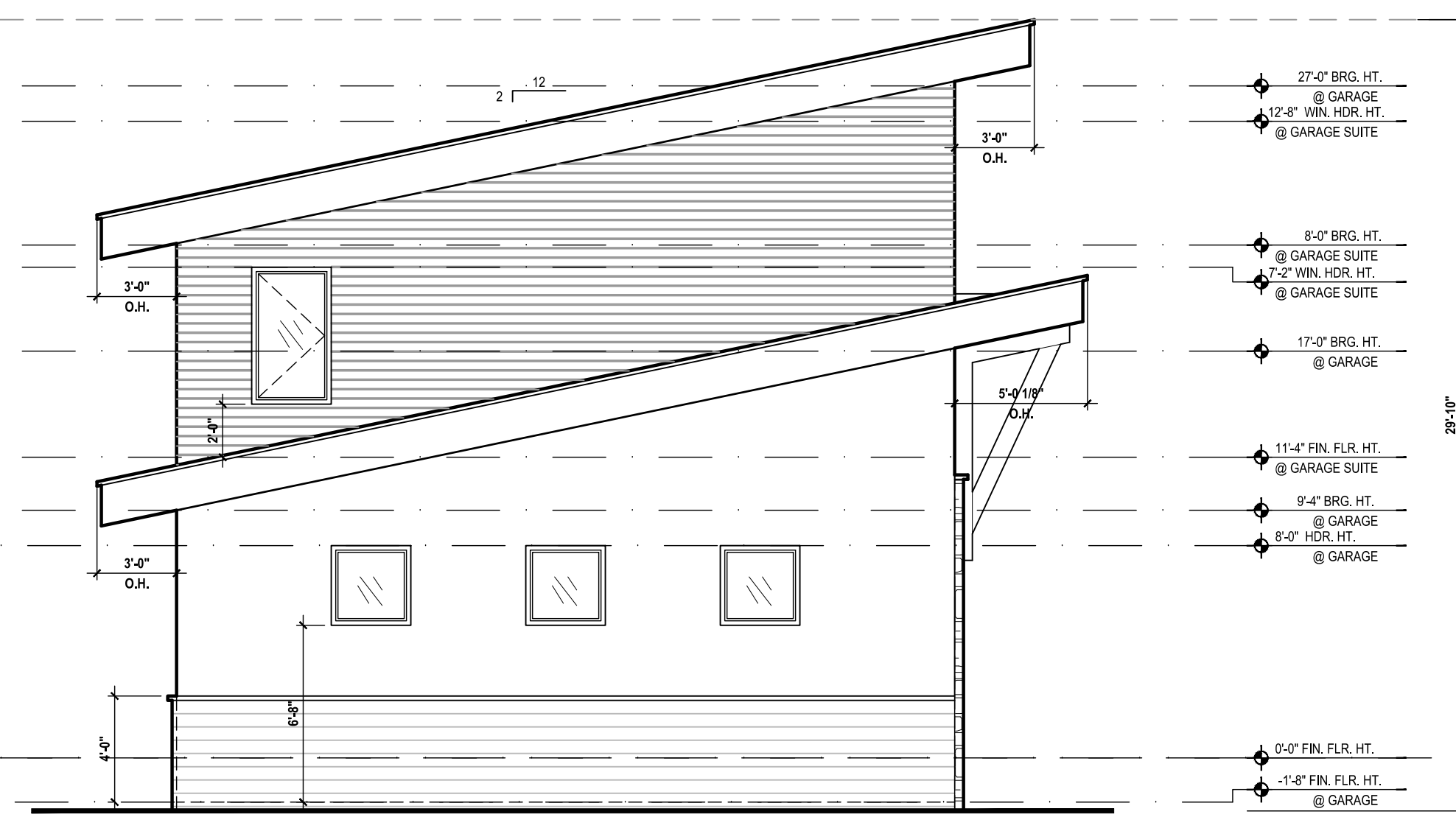


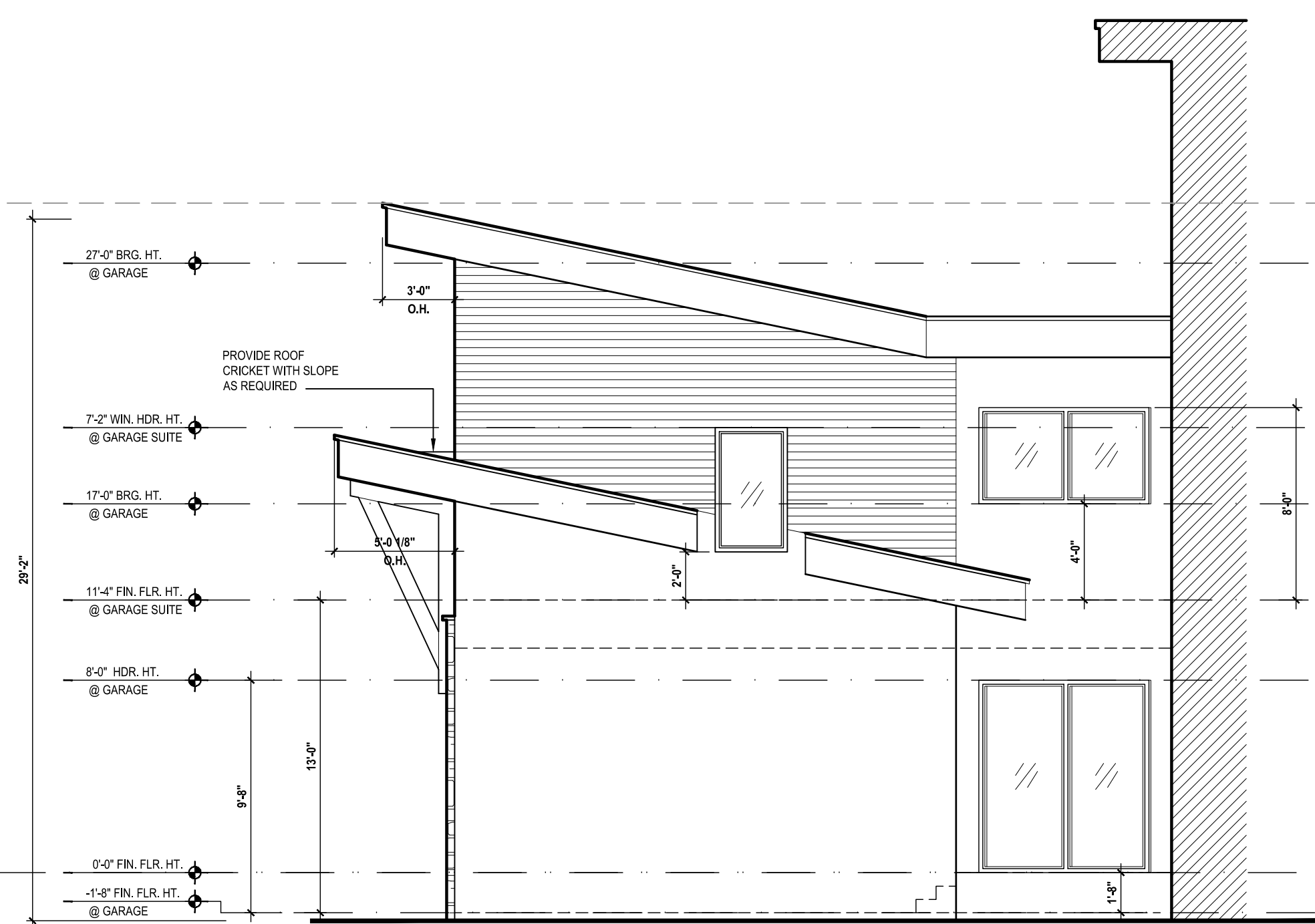
**GE1** 3 car Garage Front Elevation  
SCALE 3/16" = 1'-0"



**GE2** 3 car Garage Rear Elevation  
SCALE 3/16" = 1'-0"



**GE3** 3 car Garage Left Elevation  
SCALE 3/16" = 1'-0"



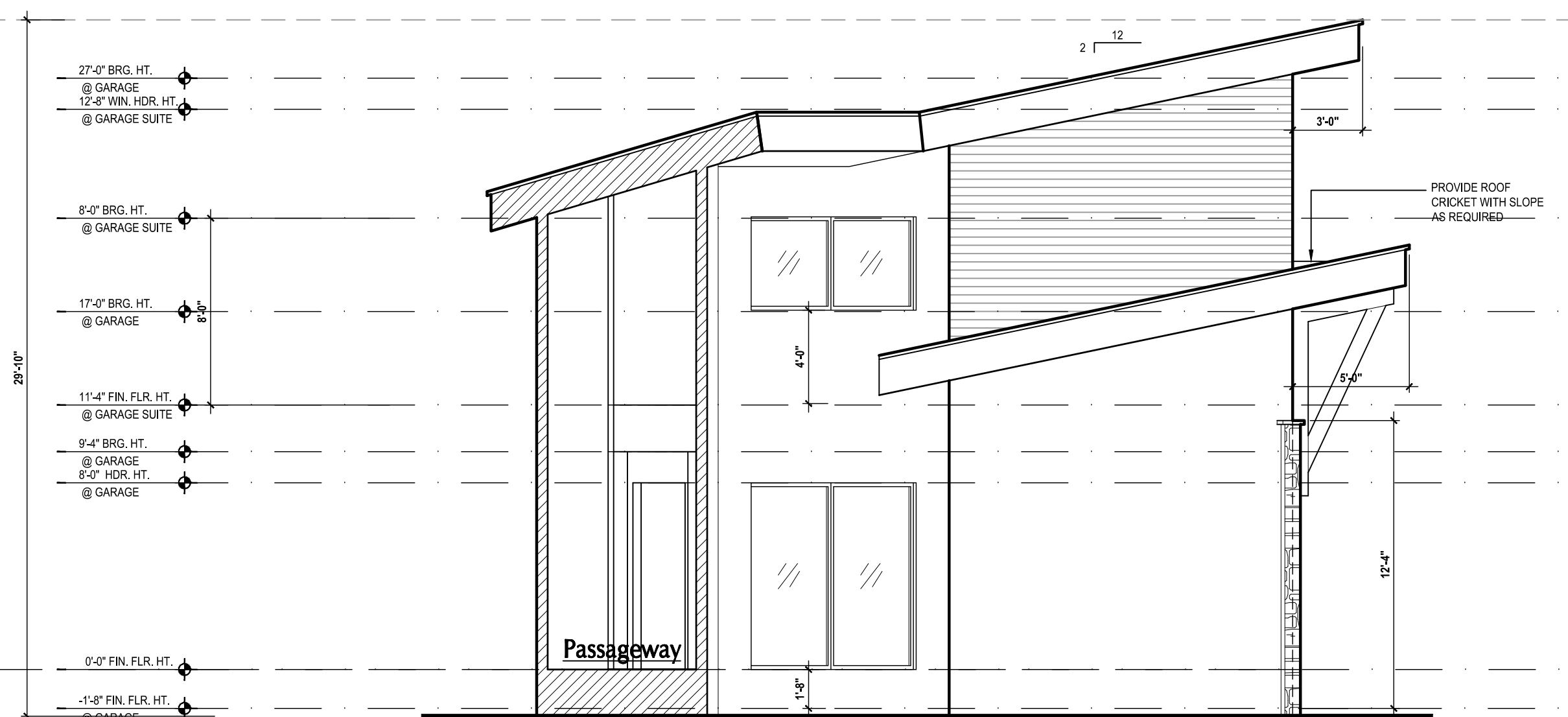
**GE4** 3 car Garage Left Elevation  
SCALE 3/16" = 1'-0"



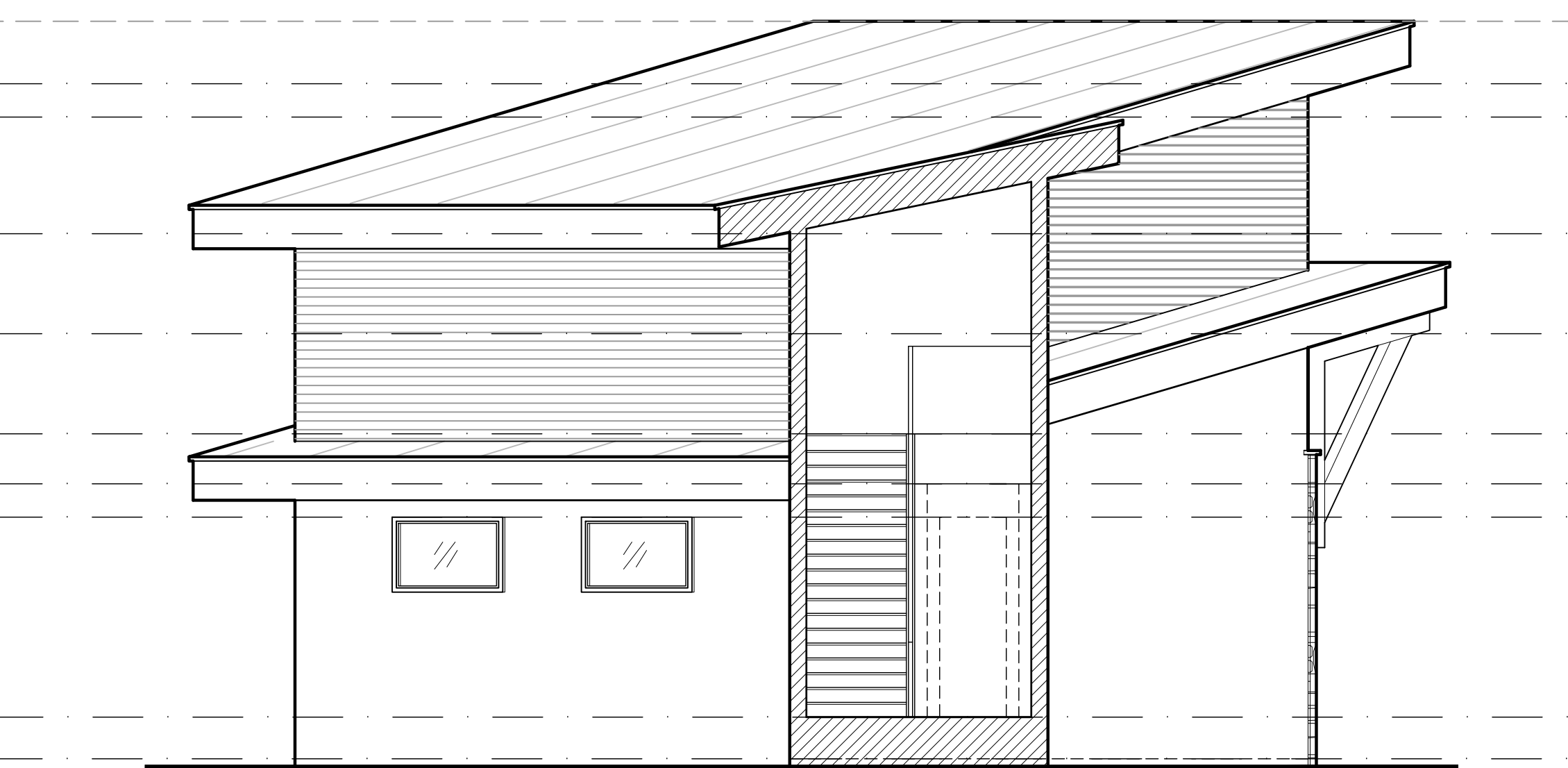
**GE5** 2 car Garage Front Elevation  
SCALE 3/16" = 1'-0"



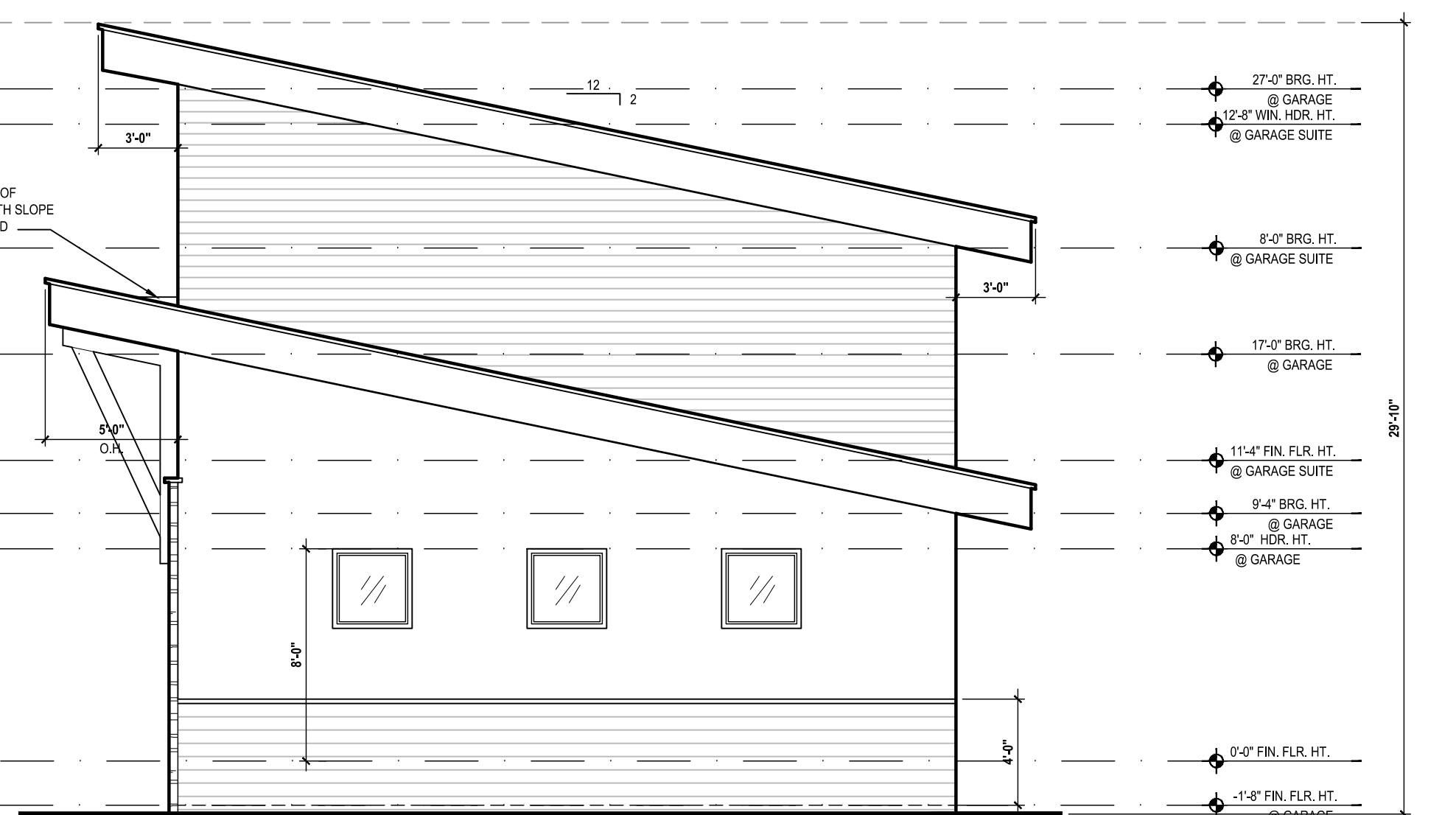
**GE6** 2 car Garage Rear Elevation  
SCALE 3/16" = 1'-0"



**GE7** 2 car Garage Left Elevation  
SCALE 3/16" = 1'-0"



**J A-01** 2 car Garage Rear Elevation/Section J  
SCALE 3/16" = 1'-0"



**GE8** 2 car Garage Right Elevation  
SCALE 3/16" = 1'-0"

All design plans in this publication are protected under the copyright law. Reproduction of the illustrations or working drawings by any means is strictly prohibited unless licensed by MJS, Inc.

MJS DESIGNERS GROUP, LLC  
 815 Oriole Ave., Suite #1040  
 Altamonte Springs, FL 32701  
 Ph: (407) 629-6711  
 Fax: (407) 629-6776  
 www.mjsdesignersgroup.com

**RKE ENTERPRISES, LLC**  
 Florida Reg. #47515  
 4707 Wild Turkey Rd.  
 Mims, FL 32754

**ENTERPRISES, LLC**  
 Florida Reg. #47515  
 4707 Wild Turkey Rd.  
 Mims, FL 32754

**MJS DESIGNERS GROUP, LLC**  
 Florida Reg. #47515  
 4707 Wild Turkey Rd.  
 Mims, FL 32754

This plan has been electronically signed by Edward Straker, MJS DESIGNERS GROUP, LLC. All rights reserved. Please refer to the project name and number for more information.

**AI**  
**BD**

**GOBA**  
 GREATER ORLANDO BUILDERS ASSOCIATION

**Meerbaum House**  
 1916 Hoffner Ave.  
 Orlando, FL 32809

ISSUE DATE: 12/15/2023  
 REVISIONS:  
 REVISION NUMBER: 01/19/2024  
 PROJECT: 23-0124  
 SCALE: AS NOTED  
 DRAWN BY: THE MJS TEAM  
 DESIGNED BY: MJS

ELEVATIONS  
**A-07**

Jan 10, 2024 12:58pm  
 MJS DESIGNERS GROUP, LLC  
 FIND US ON FACEBOOK, HOUZZ & ZILLOW AT MJS DESIGNERS GROUP