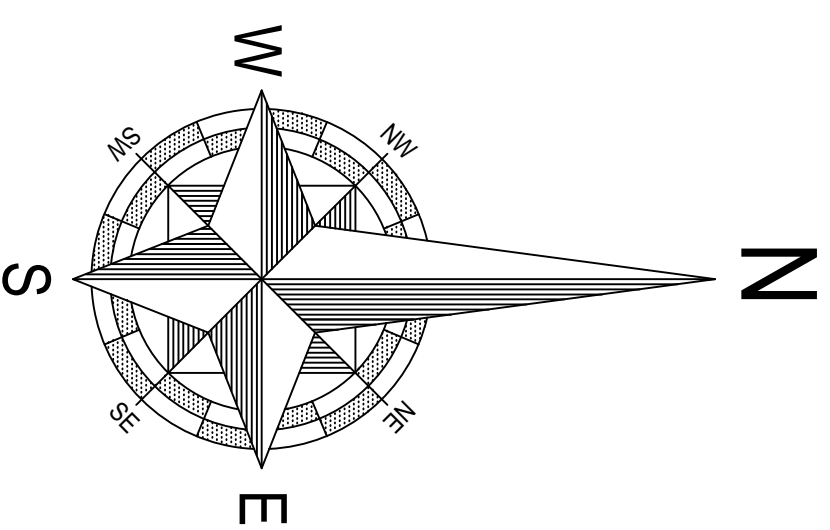


C16
 R = 50.00'(P)
 L = 108.26'(P)
 Δ = 124°02'43"(P)
 Chord Bearing =
 S 27°29'18" E(C) 88.32'(P) S 00°44'25" E(C) 28.87'(P) S 62°45'34" E(C) 67.53'(P) N 27°14'37" E 89.30'(C)
 S 26°54'26" E 88.27'(M) S 00°45'49" E 28.92'(M) S 62°49'38" E 67.59'(M)

C17
 R = 25.00'(P)
 L = 30.77'(P)
 Δ = 70°31'43"(P)
 Chord Bearing =
 S 00°44'25" E(C) 28.87'(P) S 62°45'34" E(C) 67.53'(P) N 27°14'37" E 89.30'(C)

C18
 R = 75.00'(P)
 L = 70.05'(P)
 Δ = 53°31'00"(P)
 Chord Bearing =
 S 62°45'34" E(C) 67.53'(P) N 27°14'37" E 89.30'(C)

CA
 R = 50.00'(P)
 L = 110.39'(P)
 Δ = 126°29'51"(C)
 Chord Bearing =
 N 27°14'37" E 89.30'(C)



SCALE: 1" = 10'-0"

Benchmark Information-

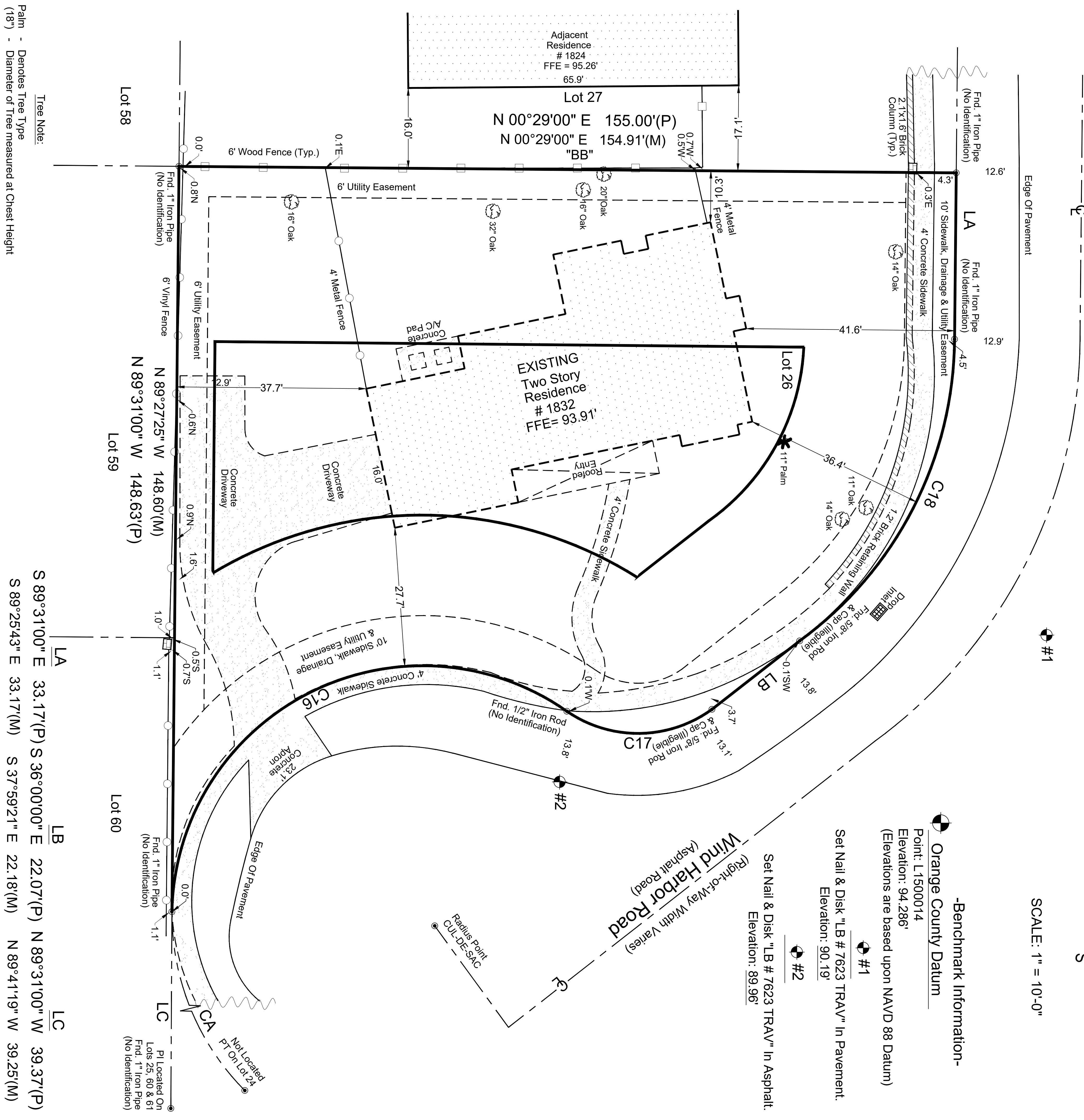
Orange County Datum
 Point: L1500014
 Elevation: 94.286'
 (Elevations are based upon NAVD 88 Datum)

Set Nail & Disk "#1
 In Pavement.
 Elevation: 90.19'

Set Nail & Disk "#2
 In Asphalt.
 Elevation: 89.96'

Wind Harbor Road
 (Right-of-Way Width Varies)
 (Asphalt Road)

Radius Point
 CUL-DE-SAC



Tree Note:
 Palm - Denotes Tree Type
 (18") - Diameter of Tree measured at Chest Height

LA S 89°31'00" E 33.17'(P) S 36°00'00" E 22.07'(P) N 89°31'00" W 39.37'(P)
 S 89°25'43" E 33.17'(M) S 37°59'21" E 22.18'(M) N 89°41'19" W 39.25'(M)

LB

LC

P/Located On
 Lots 25, 60 & 61
 Fnd. 1" Iron Pipe
 (No Identification)