

SCALE: 1" = 10'-0"

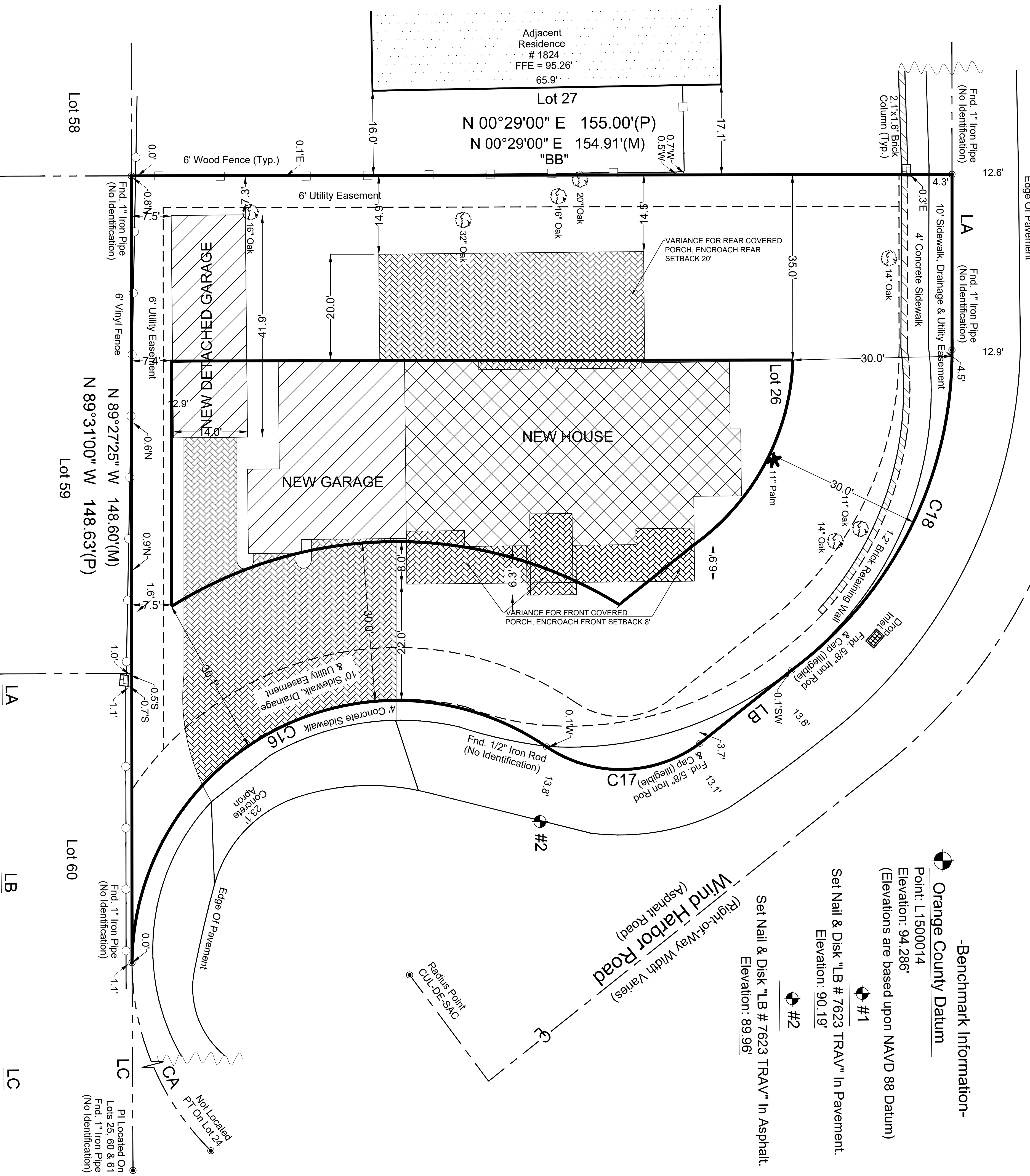
<p>C16 R = 50.00'(P) L = 108.26'(P) Δ = 124°02'43"(P) Chord Bearing = S 27°29'18" E(C) 88.32'(P) S 00°44'25" E(C) 28.87'(P) S 26°54'26" E 88.27'(M) S 00°45'49" E 28.92'(M)</p>	<p>C17 R = 25.00'(P) L = 30.77'(P) Δ = 70°31'43"(P) Chord Bearing = S 00°44'25" E(C) 28.87'(P) S 62°45'34" E(C) 67.53'(P) S 00°45'49" E 28.92'(M) S 62°49'38" E 67.59'(M)</p>	<p>C18 R = 75.00'(P) L = 70.05'(P) Δ = 53°31'00"(P) Chord Bearing = S 62°45'34" E(C) 67.53'(P) N 27°14'37" E 89.30'(C) S 62°49'38" E 67.59'(M)</p>	<p>CA R = 50.00'(P) L = 110.39'(P) Δ = 126°29'51"(C) Chord Bearing = N 27°14'37" E 89.30'(C)</p>
--	--	---	--

Benchmark Information-

Orange County Datum
Point: L1500014
Elevation: 94.286'
(Elevations are based upon NAVD 88 Datum)

#1
Set Nail & Disk "LB # 7623 TRAV" In Pavement.
Elevation: 90.19'

#2
Set Nail & Disk "LB # 7623 TRAV" In Asphalt.
Elevation: 89.96'



Tree Note:
Palm - Denotes Tree Type (18") - Diameter of Tree measured at Chest Height

LA N 89°31'00" E 33.17'(P) S 36°00'00" E 22.07'(P) N 89°31'00" W 39.37'(P)
S 89°25'43" E 33.17'(M) S 37°59'21" E 22.18'(M) N 89°41'19" W 39.25'(M)

LB N 89°31'00" E 148.60'(M)
N 89°31'00" W 148.63'(P)

LC PI Located On Lots 25, 60 & 61
Fnd. 1" Iron Pipe (No Identification)