

CIVIL CONSTRUCTION PLANS

Cross Lake Road

Roadway Improvements

FOR
 City of Belle Isle, Florida

PREPARED FOR



City of Belle Isle
 1600 Nela Ave.
 Belle Isle, FL 32809
 Tel: 407-851-7730

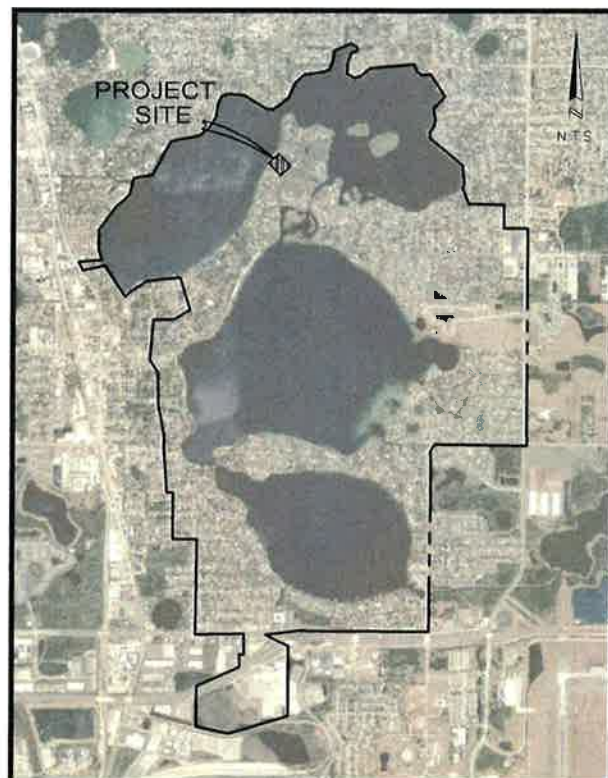
PREPARED BY

CIVIL ENGINEER
 HARRIS CIVIL ENGINEERS, LLC.
 1200 HILLCREST STREET, SUITE 200
 ORLANDO, FL 32803
 OFFICE: (407) 629-4777

SURVEYOR
 IRELAND & ASSOCIATES SURVEYING, INC.
 800 CURRENCY CIRCLE, SUITE 1020
 LAKE MARY, FL 32746
 OFFICE: (407) 678-3366

SHEET INDEX

<u>SHEET NUMBER</u>	<u>SHEET TITLE</u>
C-000	COVER SHEET
C-001	GENERAL NOTES
C-002	EXISTING CONDITIONS SURVEY
C-090	DEMOLITION AND EROSION CONTROL PLAN
C-091	DEMOLITION AND EROSION CONTROL PLAN
C-100	SITE AND GEOMETRY PLAN
C-101	SITE AND GEOMETRY PLAN
C-200	GRADING AND DRAINAGE PLAN
C-201	GRADING AND DRAINAGE PLAN
C-400	EROSION CONTROL DETAILS
C-401	SITE DETAILS
C-402	SITE DETAILS



LOCATION MAP

100% CONSTRUCTION DOCUMENTS

ISSUE DATE: JULY 21, 2023

HCE PROJECT No. 06958026

CALL 48 HOURS
 BEFORE YOU DIG
 IT IS THE LAW.
 DIAL 811

C-000

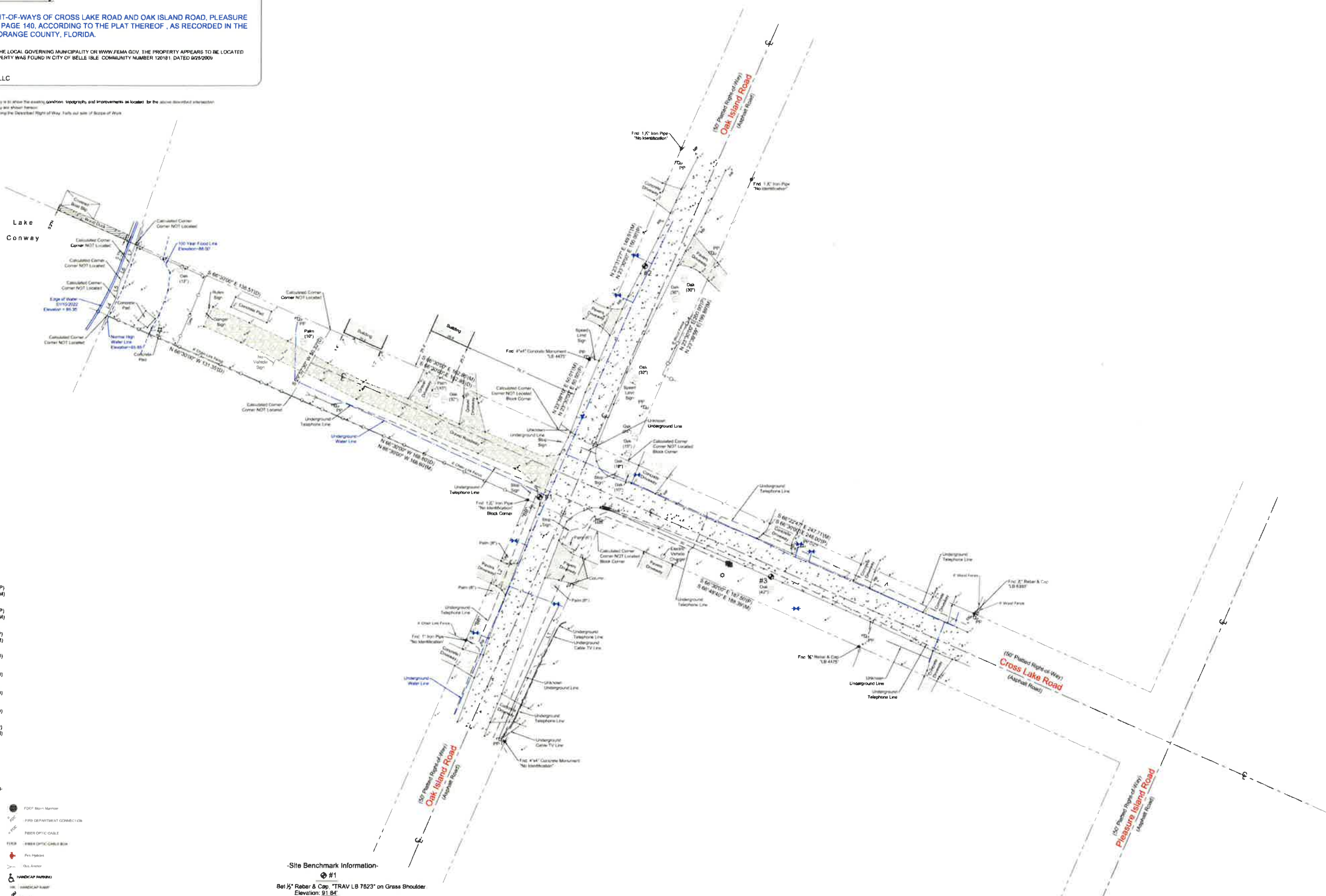
Specific Purpose Survey

Legal Description:
 A PORTION OF THE RIGHT-OF-WAYS OF CROSS LAKE ROAD AND OAK ISLAND ROAD, PLEASURE ISLAND, PLAT BOOK "F", PAGE 140, ACCORDING TO THE PLAT THEREOF, AS RECORDED IN THE OFFICIAL RECORDS OF ORANGE COUNTY, FLORIDA.

FLOOD DISCLAIMER
 BY PERFORMING A SEARCH WITH THE LOCAL GOVERNING MUNICIPALITY OR WWW.FEMA.GOV, THE PROPERTY APPEARS TO BE LOCATED IN ZONE X 300 AND AS THIS PROPERTY WAS FOUND IN CITY OF BELLE ISLE COMMUNITY NUMBER 120181 DATED 09/25/2009

CERTIFIED TO:
 HARRIS CIVIL ENGINEERS, LLC

Surveyor's Notes
 - The Purpose of this Specific Purpose Survey is to show the existing conditions, topography and improvements as located for the adjacent identified intersection.
 - Only Station Markers Flagged at Time of Survey are shown herein.
 - No Monumentation was set for boundary along the Described Right-of-Way. Fully set out at Scope of Work.



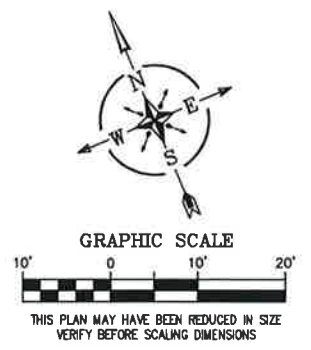
- L1
N 23°30'00" E 180.00'(P)
N 23°32'07" E 180.13'(M)
- L2
N 23°30'00" E 100.00'(P)
N 23°30'00" E 100.20'(M)
- L3
S 88°30'00" E 80.00'(P)
S 88°30'00" E 80.00'(M)
- L4
N 27°25'00" E 12.97'(D)
- L5
N 14°42'58" E 12.29'(D)
- L6
N 28°04'17" E 12.94'(D)
- L7
N 18°41'22" E 12.43'(D)
- L8
S 88°29'57" E 80.00'(P)
S 88°29'57" E 80.00'(M)

Legend

- 3/4" LAMP
- 1" LAMP
- 1 1/2" LAMP
- 2" LAMP
- 3" LAMP
- 4" LAMP
- 6" LAMP
- 8" LAMP
- 12" LAMP
- 18" LAMP
- 24" LAMP
- 36" LAMP
- 48" LAMP
- 60" LAMP
- 72" LAMP
- 84" LAMP
- 96" LAMP
- 108" LAMP
- 120" LAMP
- 144" LAMP
- 168" LAMP
- 192" LAMP
- 216" LAMP
- 240" LAMP
- 264" LAMP
- 288" LAMP
- 312" LAMP
- 336" LAMP
- 360" LAMP
- 384" LAMP
- 408" LAMP
- 432" LAMP
- 456" LAMP
- 480" LAMP
- 504" LAMP
- 528" LAMP
- 552" LAMP
- 576" LAMP
- 600" LAMP
- 624" LAMP
- 648" LAMP
- 672" LAMP
- 696" LAMP
- 720" LAMP
- 744" LAMP
- 768" LAMP
- 792" LAMP
- 816" LAMP
- 840" LAMP
- 864" LAMP
- 888" LAMP
- 912" LAMP
- 936" LAMP
- 960" LAMP
- 984" LAMP
- 1008" LAMP
- 1032" LAMP
- 1056" LAMP
- 1080" LAMP
- 1104" LAMP
- 1128" LAMP
- 1152" LAMP
- 1176" LAMP
- 1200" LAMP
- 1224" LAMP
- 1248" LAMP
- 1272" LAMP
- 1296" LAMP
- 1320" LAMP
- 1344" LAMP
- 1368" LAMP
- 1392" LAMP
- 1416" LAMP
- 1440" LAMP
- 1464" LAMP
- 1488" LAMP
- 1512" LAMP
- 1536" LAMP
- 1560" LAMP
- 1584" LAMP
- 1608" LAMP
- 1632" LAMP
- 1656" LAMP
- 1680" LAMP
- 1704" LAMP
- 1728" LAMP
- 1752" LAMP
- 1776" LAMP
- 1800" LAMP
- 1824" LAMP
- 1848" LAMP
- 1872" LAMP
- 1896" LAMP
- 1920" LAMP
- 1944" LAMP
- 1968" LAMP
- 1992" LAMP
- 2016" LAMP
- 2040" LAMP
- 2064" LAMP
- 2088" LAMP
- 2112" LAMP
- 2136" LAMP
- 2160" LAMP
- 2184" LAMP
- 2208" LAMP
- 2232" LAMP
- 2256" LAMP
- 2280" LAMP
- 2304" LAMP
- 2328" LAMP
- 2352" LAMP
- 2376" LAMP
- 2400" LAMP
- 2424" LAMP
- 2448" LAMP
- 2472" LAMP
- 2496" LAMP
- 2520" LAMP
- 2544" LAMP
- 2568" LAMP
- 2592" LAMP
- 2616" LAMP
- 2640" LAMP
- 2664" LAMP
- 2688" LAMP
- 2712" LAMP
- 2736" LAMP
- 2760" LAMP
- 2784" LAMP
- 2808" LAMP
- 2832" LAMP
- 2856" LAMP
- 2880" LAMP
- 2904" LAMP
- 2928" LAMP
- 2952" LAMP
- 2976" LAMP
- 3000" LAMP
- 3024" LAMP
- 3048" LAMP
- 3072" LAMP
- 3096" LAMP
- 3120" LAMP
- 3144" LAMP
- 3168" LAMP
- 3192" LAMP
- 3216" LAMP
- 3240" LAMP
- 3264" LAMP
- 3288" LAMP
- 3312" LAMP
- 3336" LAMP
- 3360" LAMP
- 3384" LAMP
- 3408" LAMP
- 3432" LAMP
- 3456" LAMP
- 3480" LAMP
- 3504" LAMP
- 3528" LAMP
- 3552" LAMP
- 3576" LAMP
- 3600" LAMP
- 3624" LAMP
- 3648" LAMP
- 3672" LAMP
- 3696" LAMP
- 3720" LAMP
- 3744" LAMP
- 3768" LAMP
- 3792" LAMP
- 3816" LAMP
- 3840" LAMP
- 3864" LAMP
- 3888" LAMP
- 3912" LAMP
- 3936" LAMP
- 3960" LAMP
- 3984" LAMP
- 4008" LAMP
- 4032" LAMP
- 4056" LAMP
- 4080" LAMP
- 4104" LAMP
- 4128" LAMP
- 4152" LAMP
- 4176" LAMP
- 4200" LAMP
- 4224" LAMP
- 4248" LAMP
- 4272" LAMP
- 4296" LAMP
- 4320" LAMP
- 4344" LAMP
- 4368" LAMP
- 4392" LAMP
- 4416" LAMP
- 4440" LAMP
- 4464" LAMP
- 4488" LAMP
- 4512" LAMP
- 4536" LAMP
- 4560" LAMP
- 4584" LAMP
- 4608" LAMP
- 4632" LAMP
- 4656" LAMP
- 4680" LAMP
- 4704" LAMP
- 4728" LAMP
- 4752" LAMP
- 4776" LAMP
- 4800" LAMP
- 4824" LAMP
- 4848" LAMP
- 4872" LAMP
- 4896" LAMP
- 4920" LAMP
- 4944" LAMP
- 4968" LAMP
- 4992" LAMP
- 5016" LAMP
- 5040" LAMP
- 5064" LAMP
- 5088" LAMP
- 5112" LAMP
- 5136" LAMP
- 5160" LAMP
- 5184" LAMP
- 5208" LAMP
- 5232" LAMP
- 5256" LAMP
- 5280" LAMP
- 5304" LAMP
- 5328" LAMP
- 5352" LAMP
- 5376" LAMP
- 5400" LAMP
- 5424" LAMP
- 5448" LAMP
- 5472" LAMP
- 5496" LAMP
- 5520" LAMP
- 5544" LAMP
- 5568" LAMP
- 5592" LAMP
- 5616" LAMP
- 5640" LAMP
- 5664" LAMP
- 5688" LAMP
- 5712" LAMP
- 5736" LAMP
- 5760" LAMP
- 5784" LAMP
- 5808" LAMP
- 5832" LAMP
- 5856" LAMP
- 5880" LAMP
- 5904" LAMP
- 5928" LAMP
- 5952" LAMP
- 5976" LAMP
- 6000" LAMP
- 6024" LAMP
- 6048" LAMP
- 6072" LAMP
- 6096" LAMP
- 6120" LAMP
- 6144" LAMP
- 6168" LAMP
- 6192" LAMP
- 6216" LAMP
- 6240" LAMP
- 6264" LAMP
- 6288" LAMP
- 6312" LAMP
- 6336" LAMP
- 6360" LAMP
- 6384" LAMP
- 6408" LAMP
- 6432" LAMP
- 6456" LAMP
- 6480" LAMP
- 6504" LAMP
- 6528" LAMP
- 6552" LAMP
- 6576" LAMP
- 6600" LAMP
- 6624" LAMP
- 6648" LAMP
- 6672" LAMP
- 6696" LAMP
- 6720" LAMP
- 6744" LAMP
- 6768" LAMP
- 6792" LAMP
- 6816" LAMP
- 6840" LAMP
- 6864" LAMP
- 6888" LAMP
- 6912" LAMP
- 6936" LAMP
- 6960" LAMP
- 6984" LAMP
- 7008" LAMP
- 7032" LAMP
- 7056" LAMP
- 7080" LAMP
- 7104" LAMP
- 7128" LAMP
- 7152" LAMP
- 7176" LAMP
- 7200" LAMP
- 7224" LAMP
- 7248" LAMP
- 7272" LAMP
- 7296" LAMP
- 7320" LAMP
- 7344" LAMP
- 7368" LAMP
- 7392" LAMP
- 7416" LAMP
- 7440" LAMP
- 7464" LAMP
- 7488" LAMP
- 7512" LAMP
- 7536" LAMP
- 7560" LAMP
- 7584" LAMP
- 7608" LAMP
- 7632" LAMP
- 7656" LAMP
- 7680" LAMP
- 7704" LAMP
- 7728" LAMP
- 7752" LAMP
- 7776" LAMP
- 7800" LAMP
- 7824" LAMP
- 7848" LAMP
- 7872" LAMP
- 7896" LAMP
- 7920" LAMP
- 7944" LAMP
- 7968" LAMP
- 7992" LAMP
- 8016" LAMP
- 8040" LAMP
- 8064" LAMP
- 8088" LAMP
- 8112" LAMP
- 8136" LAMP
- 8160" LAMP
- 8184" LAMP
- 8208" LAMP
- 8232" LAMP
- 8256" LAMP
- 8280" LAMP
- 8304" LAMP
- 8328" LAMP
- 8352" LAMP
- 8376" LAMP
- 8400" LAMP
- 8424" LAMP
- 8448" LAMP
- 8472" LAMP
- 8496" LAMP
- 8520" LAMP
- 8544" LAMP
- 8568" LAMP
- 8592" LAMP
- 8616" LAMP
- 8640" LAMP
- 8664" LAMP
- 8688" LAMP
- 8712" LAMP
- 8736" LAMP
- 8760" LAMP
- 8784" LAMP
- 8808" LAMP
- 8832" LAMP
- 8856" LAMP
- 8880" LAMP
- 8904" LAMP
- 8928" LAMP
- 8952" LAMP
- 8976" LAMP
- 9000" LAMP
- 9024" LAMP
- 9048" LAMP
- 9072" LAMP
- 9096" LAMP
- 9120" LAMP
- 9144" LAMP
- 9168" LAMP
- 9192" LAMP
- 9216" LAMP
- 9240" LAMP
- 9264" LAMP
- 9288" LAMP
- 9312" LAMP
- 9336" LAMP
- 9360" LAMP
- 9384" LAMP
- 9408" LAMP
- 9432" LAMP
- 9456" LAMP
- 9480" LAMP
- 9504" LAMP
- 9528" LAMP
- 9552" LAMP
- 9576" LAMP
- 9600" LAMP
- 9624" LAMP
- 9648" LAMP
- 9672" LAMP
- 9696" LAMP
- 9720" LAMP
- 9744" LAMP
- 9768" LAMP
- 9792" LAMP
- 9816" LAMP
- 9840" LAMP
- 9864" LAMP
- 9888" LAMP
- 9912" LAMP
- 9936" LAMP
- 9960" LAMP
- 9984" LAMP
- 10008" LAMP
- 10032" LAMP
- 10056" LAMP
- 10080" LAMP
- 10104" LAMP
- 10128" LAMP
- 10152" LAMP
- 10176" LAMP
- 10200" LAMP
- 10224" LAMP
- 10248" LAMP
- 10272" LAMP
- 10296" LAMP
- 10320" LAMP
- 10344" LAMP
- 10368" LAMP
- 10392" LAMP
- 10416" LAMP
- 10440" LAMP
- 10464" LAMP
- 10488" LAMP
- 10512" LAMP
- 10536" LAMP
- 10560" LAMP
- 10584" LAMP
- 10608" LAMP
- 10632" LAMP
- 10656" LAMP
- 10680" LAMP
- 10704" LAMP
- 10728" LAMP
- 10752" LAMP
- 10776" LAMP
- 10800" LAMP
- 10824" LAMP
- 10848" LAMP
- 10872" LAMP
- 10896" LAMP
- 10920" LAMP
- 10944" LAMP
- 10968" LAMP
- 10992" LAMP
- 11016" LAMP
- 11040" LAMP
- 11064" LAMP
- 11088" LAMP
- 11112" LAMP
- 11136" LAMP
- 11160" LAMP
- 11184" LAMP
- 11208" LAMP
- 11232" LAMP
- 11256" LAMP
- 11280" LAMP
- 11304" LAMP
- 11328" LAMP
- 11352" LAMP
- 11376" LAMP
- 11400" LAMP
- 11424" LAMP
- 11448" LAMP
- 11472" LAMP
- 11496" LAMP
- 11520" LAMP
- 11544" LAMP
- 11568" LAMP
- 11592" LAMP
- 11616" LAMP
- 11640" LAMP
- 11664" LAMP
- 11688" LAMP
- 11712" LAMP
- 11736" LAMP
- 11760" LAMP
- 11784" LAMP
- 11808" LAMP
- 11832" LAMP
- 11856" LAMP
- 11880" LAMP
- 11904" LAMP
- 11928" LAMP
- 11952" LAMP
- 11976" LAMP
- 12000" LAMP
- 12024" LAMP
- 12048" LAMP
- 12072" LAMP
- 12096" LAMP
- 12120" LAMP
- 12144" LAMP
- 12168" LAMP
- 12192" LAMP
- 12216" LAMP
- 12240" LAMP
- 12264" LAMP
- 12288" LAMP
- 12312" LAMP
- 12336" LAMP
- 12360" LAMP
- 12384" LAMP
- 12408" LAMP
- 12432" LAMP
- 12456" LAMP
- 12480" LAMP
- 12504" LAMP
- 12528" LAMP
- 12552" LAMP
- 12576" LAMP
- 12600" LAMP
- 12624" LAMP
- 12648" LAMP
- 12672" LAMP
- 12696" LAMP
- 12720" LAMP
- 12744" LAMP
- 12768" LAMP
- 12792" LAMP
- 12816" LAMP
- 12840" LAMP
- 12864" LAMP
- 12888" LAMP
- 12912" LAMP
- 12936" LAMP
- 12960" LAMP
- 12984" LAMP
- 13008" LAMP
- 13032" LAMP
- 13056" LAMP
- 13080" LAMP
- 13104" LAMP
- 13128" LAMP
- 13152" LAMP
- 13176" LAMP
- 13200" LAMP
- 13224" LAMP
- 13248" LAMP
- 13272" LAMP
- 13296" LAMP
- 13320" LAMP
- 13344" LAMP
- 13368" LAMP
- 13392" LAMP
- 13416" LAMP
- 13440" LAMP
- 13464" LAMP
- 13488" LAMP
- 13512" LAMP
- 13536" LAMP
- 13560" LAMP
- 13584" LAMP
- 13608" LAMP
- 13632" LAMP
- 13656" LAMP
- 13680" LAMP
- 13704" LAMP
- 13728" LAMP
- 13752" LAMP
- 13776" LAMP
- 13800" LAMP
- 13824" LAMP
- 13848" LAMP
- 13872" LAMP
- 13896" LAMP
- 13920" LAMP
- 13944" LAMP
- 13968" LAMP
- 13992" LAMP
- 14016" LAMP
- 14040" LAMP
- 14064" LAMP
- 14088" LAMP
- 14112" LAMP
- 14136" LAMP
- 14160" LAMP
- 14184" LAMP
- 14208" LAMP
- 14232" LAMP
- 14256" LAMP
- 14280" LAMP
- 14304" LAMP
- 14328" LAMP
- 14352" LAMP
- 14376" LAMP
- 14400" LAMP
- 14424" LAMP
- 14448" LAMP
- 14472" LAMP
- 14496" LAMP
- 14520" LAMP
- 14544" LAMP
- 14568" LAMP
- 14592" LAMP
- 14616" LAMP
- 14640" LAMP
- 14664" LAMP
- 14688" LAMP
- 14712" LAMP
- 14736" LAMP
- 14760" LAMP
- 14784" LAMP
- 14808" LAMP
- 14832" LAMP
- 14856" LAMP
- 14880" LAMP
- 14904" LAMP
- 14928" LAMP
- 14952" LAMP
- 14976" LAMP
- 15000" LAMP
- 15024" LAMP
- 15048" LAMP
- 15072" LAMP
- 15096" LAMP
- 15120" LAMP
- 15144" LAMP
- 15168" LAMP
- 15192" LAMP
- 15216" LAMP
- 15240" LAMP
- 15264" LAMP
- 15288" LAMP
- 15312" LAMP
- 15336" LAMP
- 15360" LAMP
- 15384" LAMP
- 15408" LAMP
- 15432" LAMP
- 15456" LAMP
- 15480" LAMP
- 15504" LAMP
- 15528" LAMP
- 15552" LAMP
- 15576" LAMP
- 15600" LAMP
- 15624" LAMP
- 15648" LAMP
- 15672" LAMP
- 15696" LAMP
- 15720" LAMP
- 15744" LAMP
- 15768" LAMP
- 15792" LAMP
- 15816" LAMP
- 15840" LAMP
- 15864" LAMP
- 15888" LAMP
- 15912" LAMP
- 15936" LAMP
- 15960" LAMP
- 15984" LAMP
- 16008" LAMP
- 16032" LAMP
- 16056" LAMP
- 16080" LAMP
- 16104" LAMP
- 16128" LAMP
- 16152" LAMP
- 16176" LAMP
- 16200" LAMP
- 16224" LAMP
- 16248" LAMP
- 16272" LAMP
- 16296" LAMP
- 16320" LAMP
- 16344" LAMP
- 16368" LAMP
- 16392" LAMP
- 16416" LAMP
- 16440" LAMP
- 16464" LAMP
- 16488" LAMP
- 16512" LAMP
- 16536" LAMP
- 16560" LAMP
- 16584" LAMP
- 16608" LAMP
- 16632" LAMP
- 16656" LAMP
- 16680" LAMP
- 16704" LAMP
- 16728" LAMP
- 16752" LAMP
- 16776" LAMP
- 16800" LAMP
- 16824" LAMP
- 16848" LAMP
- 16872" LAMP
- 16896" LAMP
- 16920" LAMP
- 16944" LAMP
- 16968" LAMP
- 16992" LAMP
- 17016" LAMP
- 17040" LAMP
- 17064" LAMP
- 17088" LAMP
- 17112" LAMP
- 17136" LAMP
- 17160" LAMP
- 17184" LAMP
- 17208" LAMP
- 17232" LAMP
- 17256" LAMP
-



HARRIS
 Harris CM Engineers, LLC
 1200 Hillcrest Street
 Suite 200
 Orlando, Florida 32803
 Phone: (407) 629-4777
 Fax: (407) 629-7888
 www.harriscmengineers.com
 EB 9814

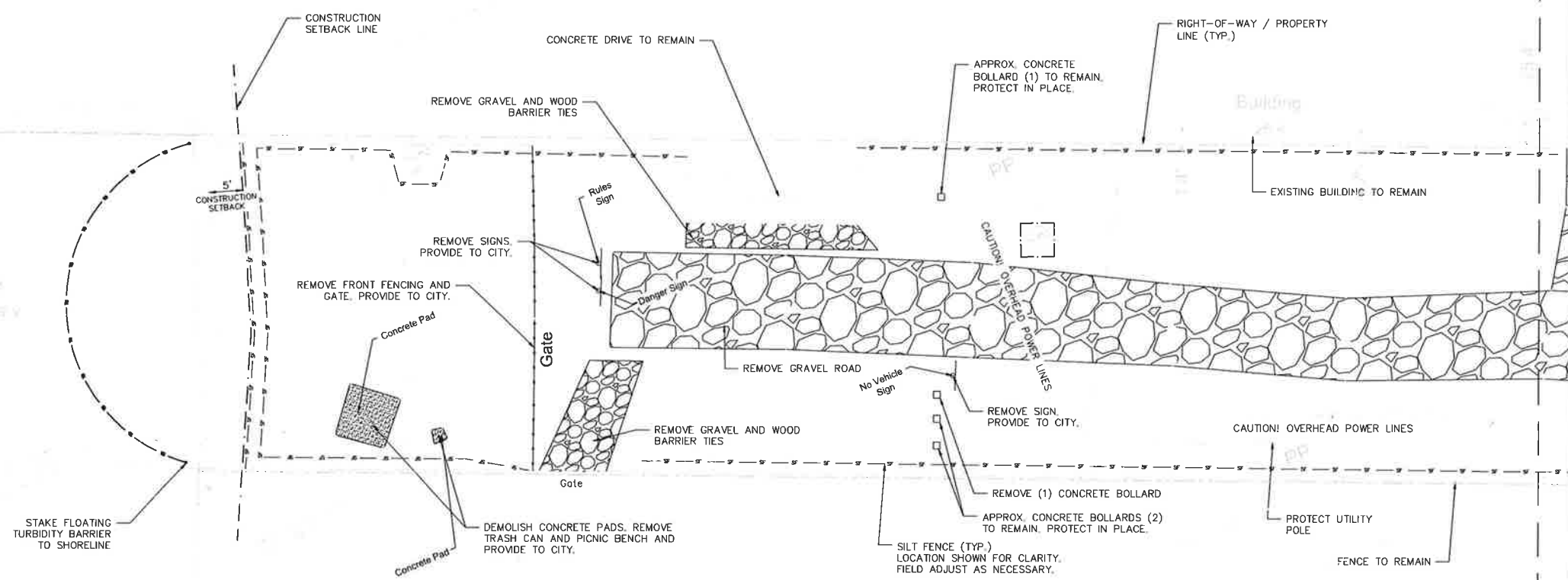


LEGEND:

- CONSTRUCTION SETBACK
- SF --- SILT FENCE
- TB --- TURBIDITY BARRIER
- TREE PROTECTION

DEMOLITION NOTES:

1. OVERHEAD POWER LINES AT THIS SITE!! CONTRACTOR TO USE EXTREME CAUTION.
2. CONTRACTOR SHALL PRESERVE ALL BENCHMARK LOCATIONS AS SHOWN ON SURVEY.
3. CONTRACTOR TO LOCATED ALL RESIDENTIAL SPRINKLER HEADS PRIOR TO CLEARING/GRUBBING. CONTRACTOR TO CONTACT HOMEOWNER(S) TO PROVE FUNCTIONALITY OF SYSTEM AND DOCUMENT CONDITION. CONTRACTOR TO REPAIR/REPLACE HEADS OR PIPING THAT BECOMES DAMAGED DURING CONSTRUCTION.
4. UNLESS OTHERWISE NOTED, ALL DEMOLISHED MATERIALS (PAVING, CURBING, ETC.) SHALL BE REMOVED AND DISPOSED OF OFF SITE. NOTHING IDENTIFIED FOR DEMOLITION SHALL BE ABANDONED IN PLACE.
5. CONTRACTOR SHALL TAKE CARE DURING THE DEMOLITION AND REMOVAL ACTIVITIES TO PREVENT UNWANTED DAMAGE TO EXISTING FACILITIES TO REMAIN.
6. DO NOT CLOSE, OBSTRUCT OR BLOCK RESIDENTIAL DRIVEWAYS AT ANY TIME DURING CONSTRUCTION.
7. EXISTING UTILITIES IN AREA. CONTRACTOR TO USE CAUTION WHEN DIGGING.
8. PLAN DOES NOT SHOW ALL AREAS OF SOD REMOVAL. CONTRACTOR SHALL RESTORE ALL DISTURBED AREA TO EQUAL OR BETTER CONDITIONS.
9. PLAN DOES NOT SHOW ALL MEANS OF EROSION CONTROL. CONTRACTOR TO EMPLOY BEST MANAGEMENT PRACTICES AND MEANS TO ENSURE NO OFF-SITE IMPACTS.



**CROSS LAKE ROAD
 ROADWAY IMPROVEMENTS**

City of Belle Isle
 1600 Nela Avenue
 Belle Isle, Florida 32809

Revisions:

No.	Date	Description

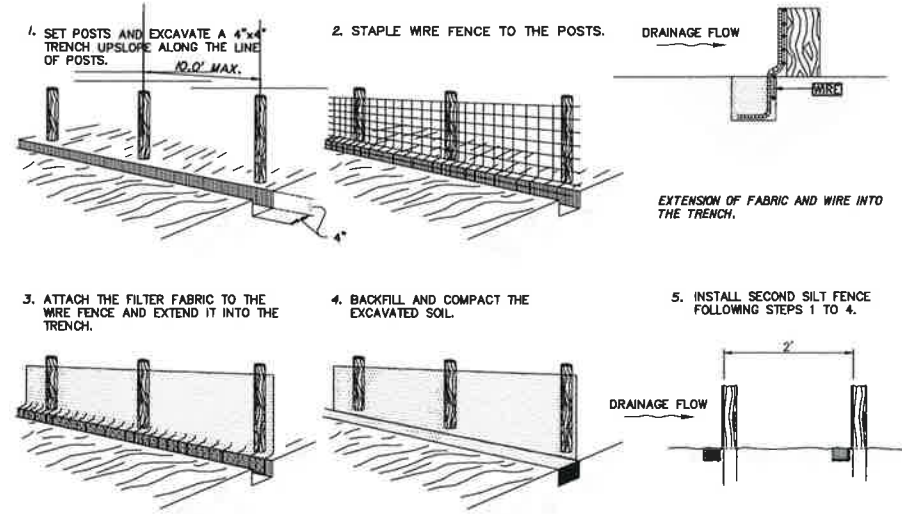
**DEMOLITION AND
 EROSION CONTROL
 PLAN**

Scale: SEE SCALE BAR
 Date: 07/21/2023
 Project No: 06958026
 Design: NZL
 Drawn: NZL
 Checked: DWT

Release: 100% CD
 DATE: 07/21/2023

C-091

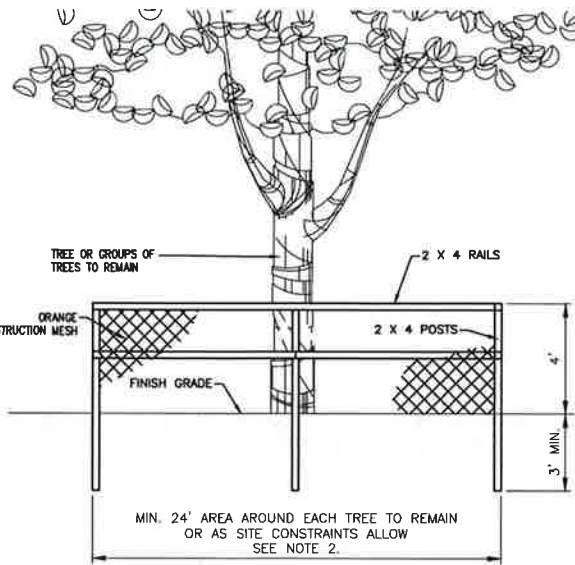
MATCHLINE - SEE SHEET C-090



SINGLE AND DOUBLE SILT FENCE DETAIL

N.T.S.

1
400

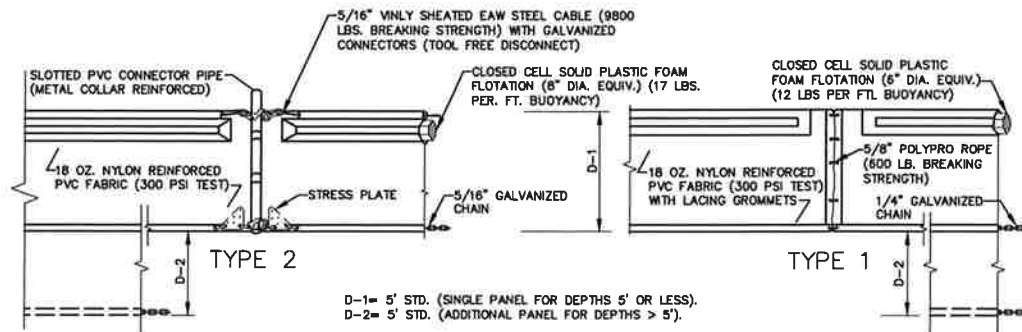


TREE PROTECTION DETAIL

N.T.S.

2
400

- NOTES:
1. NO STOCKPILING OF MATERIALS, TRASH OR DEBRIS SHALL BE PERMITTED WITH THE BARRIER.
 2. IF MINIMUM 24' CANNOT BE ACHIEVED, CONTRACTOR TO HAND DIG AND/OR PLACE FILL WITHIN THE TREE DRIP LINE. IT WILL NOT BE ACCEPTABLE TO USE HEAVY MACHINERY WITHIN 12' OF A TREE WITHOUT PRIOR APPROVAL OF CITY MANAGER.



D-1= 5' STD. (SINGLE PANEL FOR DEPTHS 5' OR LESS).
D-2= 5' STD. (ADDITIONAL PANEL FOR DEPTHS > 5').

CURTAIN TO REACH BOTTOM UP TO DEPTHS OF 10 FEET. TWO (2) PANELS TO BE USED FOR DEPTHS GREATER THAN 10 FEET UNLESS SPECIAL DEPTH CURTAINS SPECIFICALLY CALLED FOR IN THE PLANS OR AS DETERMINED BY THE ENGINEER.

NOTICE: COMPONENTS OF TYPES 1 AND 2 MAY BE SIMILAR OR IDENTICAL TO PROPRIETARY DESIGNS. ANY INFRINGEMENT ON THE PROPRIETARY RIGHTS OF THE DESIGNER SHALL BE THE SOLE RESPONSIBILITY OF THE USER. SUBSTITUTIONS FOR TYPES 1 AND 2 SHALL BE AS APPROVED BY THE ENGINEER.

FLOATING TURBIDITY BARRIER DETAIL

N.T.S.

3
400



HARRIS
Harris Civil Engineers, LLC
1200 Hillcrest Street
Suite 200
Orlando, Florida 32803
Phone: (407) 629-4777
Fax: (407) 629-7888
www.harrisengineers.com
EB 9814

CROSS LAKE ROAD ROADWAY IMPROVEMENTS
City of Belle Isle
1600 Nela Avenue
Belle Isle, Florida 32809

No.	Date	Description

EROSION CONTROL DETAILS

Scale: N.T.S.
Date: 07/21/2023
Project No.: 06958026

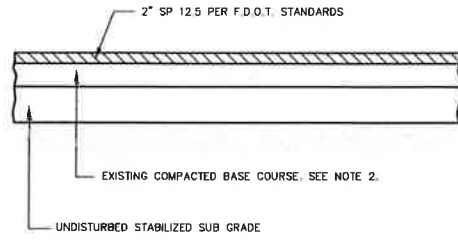
Design: NZL
Drawn: NZL
Checked: DWT

Release: 100% CD
DATE: 07/21/2023

C-400

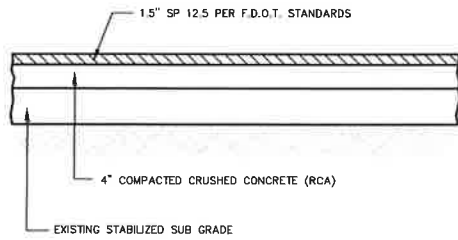
FILE NAME: C:\PROJ\06958026\PROJECTS\CROSS LAKE\DWG\SHETS\C-400 - GENERAL DETAILS.DWG
DATE: 21 JUL 2023 2:11 PM
USER: INCCOL

DISCLAIMER: © 2017. ALL SCALE DIMENSIONS AND PLANS INDICATED OR REFERENCED BY THIS DRAWING ARE OWNED BY AND THE PROPERTY OF HARRIS CIVIL ENGINEERS, LLC AND WERE CREATED, EVALUATED AND DEVELOPED FOR USE WITH THE SPECIFIC PROJECT. HARRIS CIVIL ENGINEERS, INCORPORATED, OR OTHER THIRD PARTY CONSULTANTS AND OTHER THIRD PARTY CONTRACTORS ARE NOT RESPONSIBLE FOR ANY AND ALL ERRORS, OMISSIONS, INACCURACIES, OR INADEQUACIES IN ANY AND ALL INFORMATION, INFORMATION, OR INFORMATION PROVIDED HEREIN. THE USER SHALL BE RESPONSIBLE FOR VERIFYING THE ACCURACY OF ALL INFORMATION PROVIDED HEREIN.



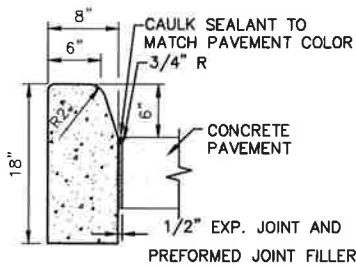
- NOTES:**
1. ASPHALT TO BE MILLED AND REPAVED. CONTRACTOR TO MILL TO EXISTING BASE COURSE.
 2. CONFIRM EXISTING BASE COURSE MEETS COMPACTION OF 98% OF MATERIALS DRY DENSITY (AASHTO T-180, LBR-100). COMPACTION TESTING SHALL BE AT A MINIMUM OF 3 TESTS.

**MILL/REPAVE
ASPHALT DETAIL** 1
N.T.S. 402



- NOTES:**
1. RCA BASE MATERIAL PER FDOT SPECIFICATIONS SECTION 911 (LATEST EDITION).
 2. RCA BASE COMPACTED TO A MIN. DENSITY OF 98% MODIFIED PROCTOR MAXIMUM DENSITY AND A MIN. LBR OF 150. COMPACTION TESTING SHALL BE AT A MINIMUM OF 3 TESTS.
 3. SUB GRADE SHALL PROVIDE A MINIMUM LBR OF 40.

**ASPHALT PAVING
SECTION DETAIL** 2
N.T.S. 402



NOTE: FOR USE ADJACENT TO CONCRETE OR FLEXIBLE PAVEMENT. DETAIL SHOWN NEXT TO CONCRETE PAVEMENT. PREFORMED JOINT FILLER AND JOINT SEAL ARE REQUIRED BETWEEN THE CURB AND CONCRETE PAVEMENT ONLY.

**TYPE D CURB
DETAIL** 3
N.T.S. 402

FILE NAME: C:\PROJ\06958026\PROJECTS\CROSS LAKE\DWG\SHEETS\C-402 - GENERAL DETAILS.DWG
DATE: 21 JUL 2023 2:13PM USER: NSDUE



HARRIS
Harris Civil Engineers, LLC
1200 Hillcrest Street
Suite 200
Orlando, Florida 32803
Phone: (407) 629-4777
Fax: (407) 629-7888
www.harriscivilengineers.com
EB 9814

**CROSS LAKE ROAD
ROADWAY IMPROVEMENTS**
City of Belle Isle
1600 Nela Avenue
Belle Isle, Florida 32809

Revisions:

No.	Date	Description

SITE DETAILS

Scale: N.T.S.
Date: 07/21/2023
Project No.: 06958026

Design: NZL
Drawn: NZL
Checked: DWT

Release: 100% CD
DATE: 07/21/2023

C-402