

Legend

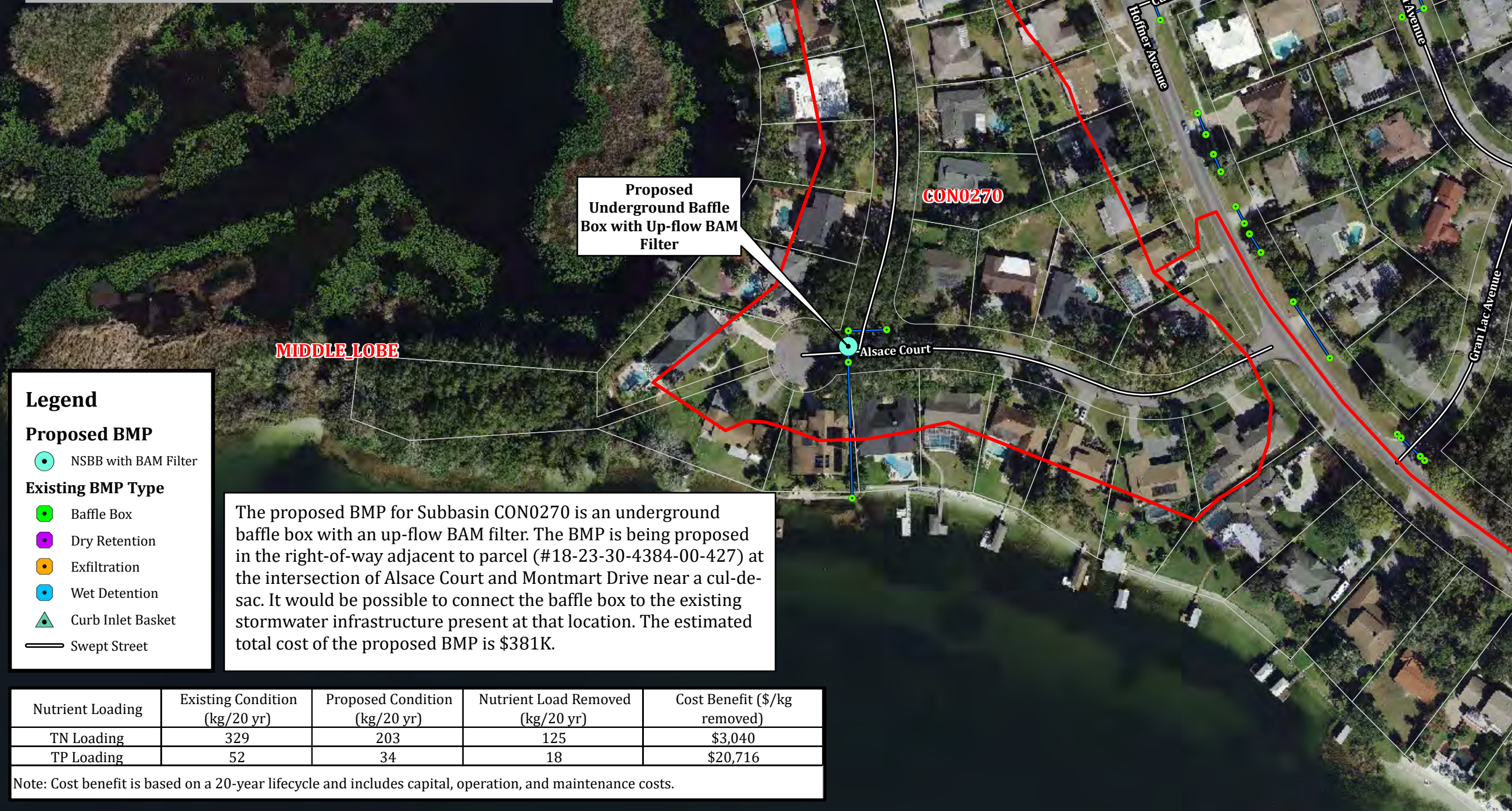
- Subbasins
- Parcels
- Drainage Structures**
- Inlet/Outlet
- Manhole
- Control Structure
- Stormwater Conveyance**
- Conduit
- Channel

Sources:
 Aerial: Orange County, 2019
 Roads: Orange County, 2015
 Street Sweeping: Orange County, 2018
 Curb Inlet Baskets: Orange County, 2016

Figure 8-5

Subbasin CON0270 Improvement Alternative Map

Lake Conway
 Stormwater Quality Management
 Master Plan



Proposed Underground Baffle Box with Up-flow BAM Filter

MIDDLE LOBE

CON0270

Alsace Court

Legend

Proposed BMP

- NSBB with BAM Filter

Existing BMP Type

- Baffle Box
- Dry Retention
- Exfiltration
- Wet Detention
- ▲ Curb Inlet Basket
- Swept Street

The proposed BMP for Subbasin CON0270 is an underground baffle box with an up-flow BAM filter. The BMP is being proposed in the right-of-way adjacent to parcel (#18-23-30-4384-00-427) at the intersection of Alsace Court and Montmart Drive near a cul-de-sac. It would be possible to connect the baffle box to the existing stormwater infrastructure present at that location. The estimated total cost of the proposed BMP is \$381K.

Nutrient Loading	Existing Condition (kg/20 yr)	Proposed Condition (kg/20 yr)	Nutrient Load Removed (kg/20 yr)	Cost Benefit (\$/kg removed)
TN Loading	329	203	125	\$3,040
TP Loading	52	34	18	\$20,716

Note: Cost benefit is based on a 20-year lifecycle and includes capital, operation, and maintenance costs.