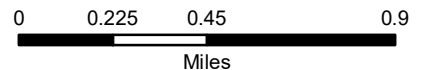


111 North Magnolia Ave
 Suite 1350
 Orlando, FL 32801
 Tel: 407.775.6500
 www.rviplanning.com

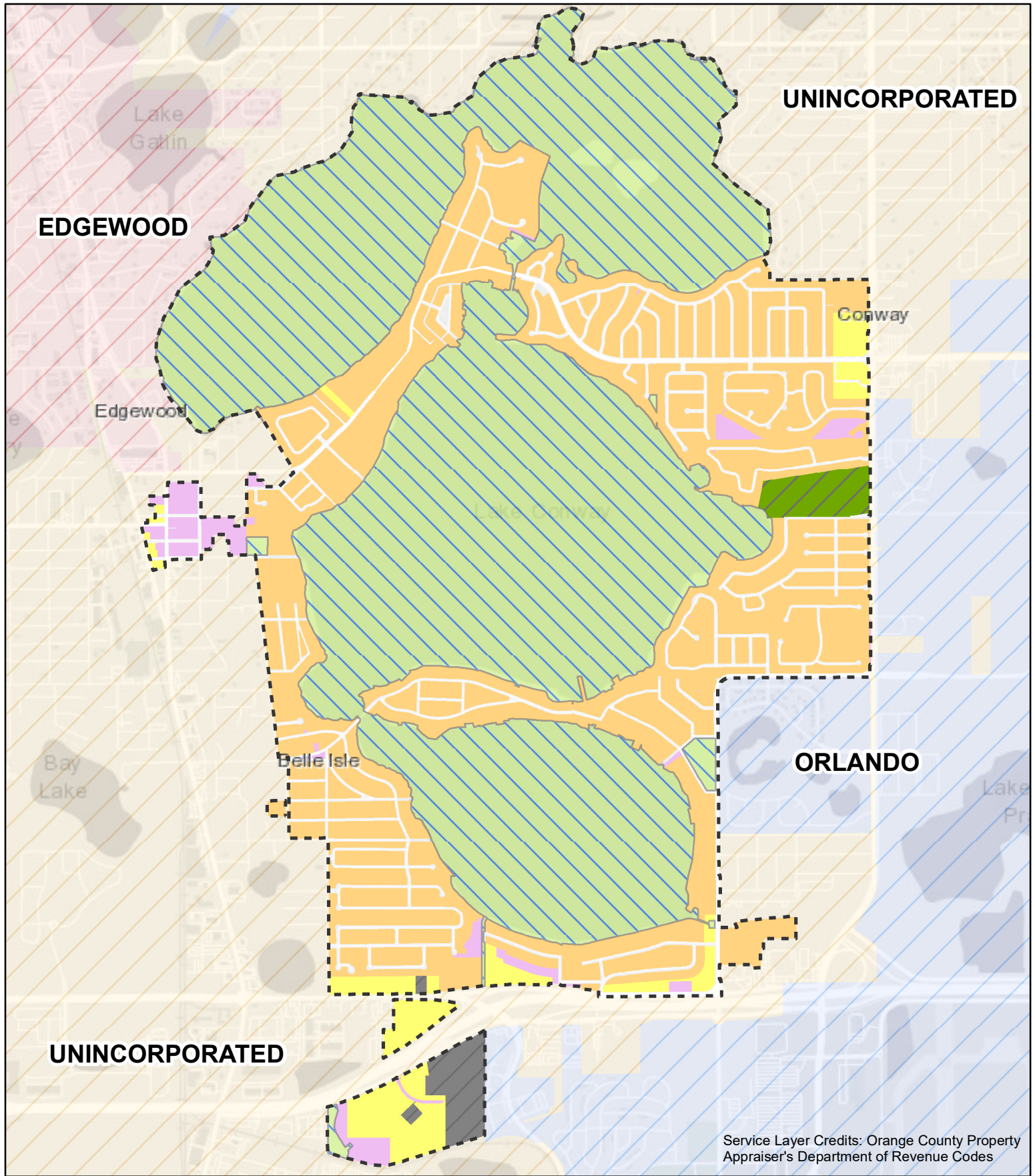
City of Belle Isle • VACANT LAND

- 📍 City of Belle Isle, FL
- 📅 Date: 6/12/2024
- # 23002514
- 🏠 Belle Isle

- 🗲 City Boundary
- 🟡 Vacant - Low Density Residential (35)
- 🟠 Vacant - Medium Density Residential (11)
- 🔴 Vacant - Commercial (4)
- 🟣 Vacant - Industrial (3)
- 🟪 Vacant - Professional / Office (1)
- 🟢 Vacant - Conservation (1)



Information furnished regarding this property is from sources deemed reliable. RVi has not made an independent investigation of these sources and no warranty is made as to their accuracy or completeness. This plan is conceptual, subject to change, and does not represent any regulatory approval.



Service Layer Credits: Orange County Property Appraiser's Department of Revenue Codes

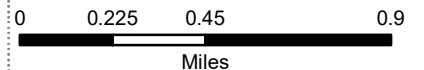


111 North Magnolia Ave
Suite 1350
Orlando, FL 32801
Tel: 407.775.6500
www.rviplanning.com

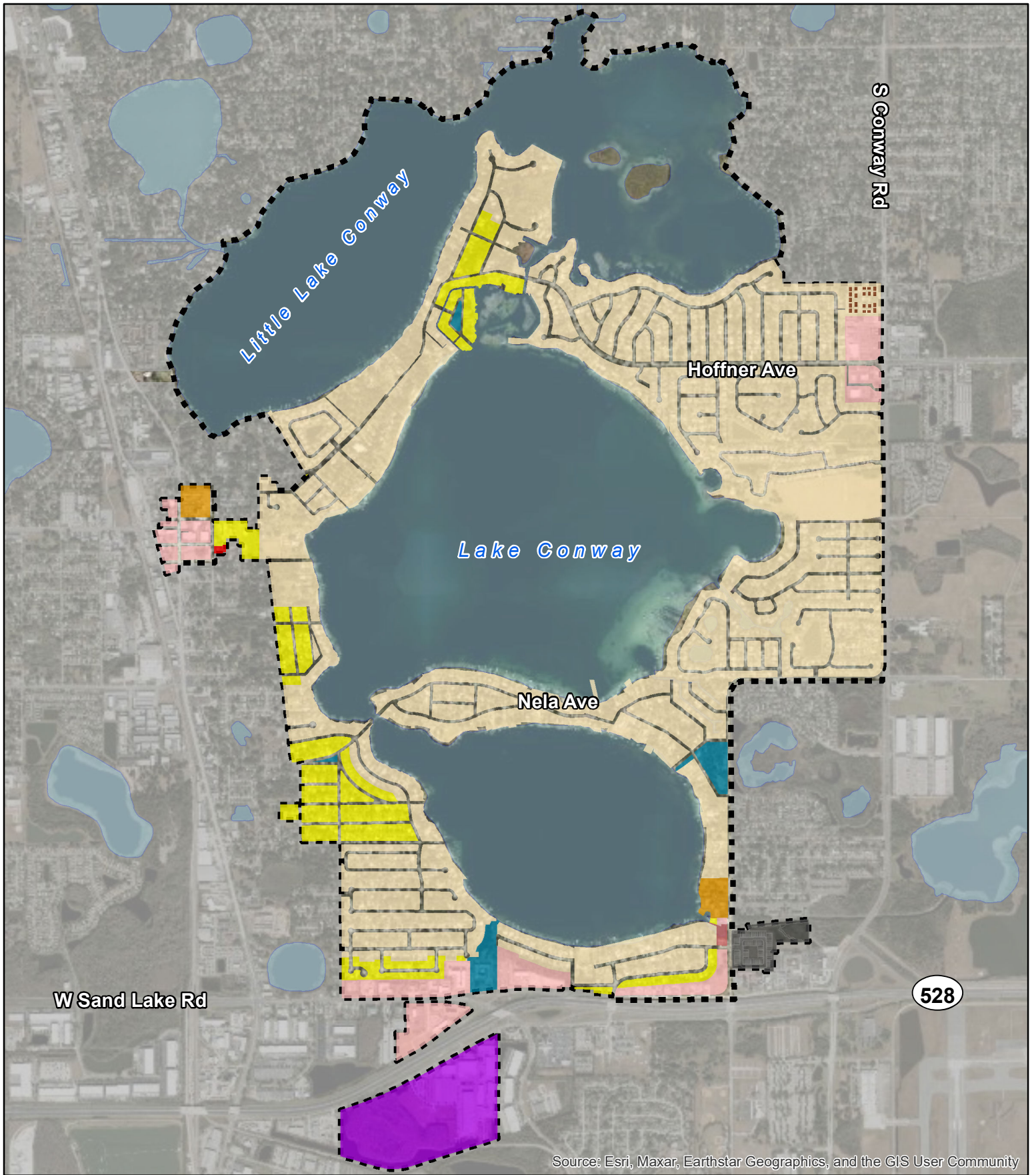
City of Belle Isle • EXISTING LAND USE

- City of Belle Isle, FL
- Date: 6/12/2024
- # 23002514
- Belle Isle

- City Boundary
- Residential
- Commercial / Retail
- Industrial
- Agricultural
- Institutional / Municipal
- Parks / Environmental



Information furnished regarding this property is from sources deemed reliable. RVI has not made an independent investigation of these sources and no warranty is made as to their accuracy or completeness. This plan is conceptual, subject to change, and does not represent any regulatory approval.



Source: Esri, Maxar, Earthstar Geographics, and the GIS User Community



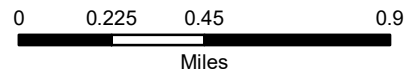
111 North Magnolia Ave
Suite 1350
Orlando, FL 32801
Tel: 407.775.6500
www.rviplanning.com

City of Belle Isle • ZONING

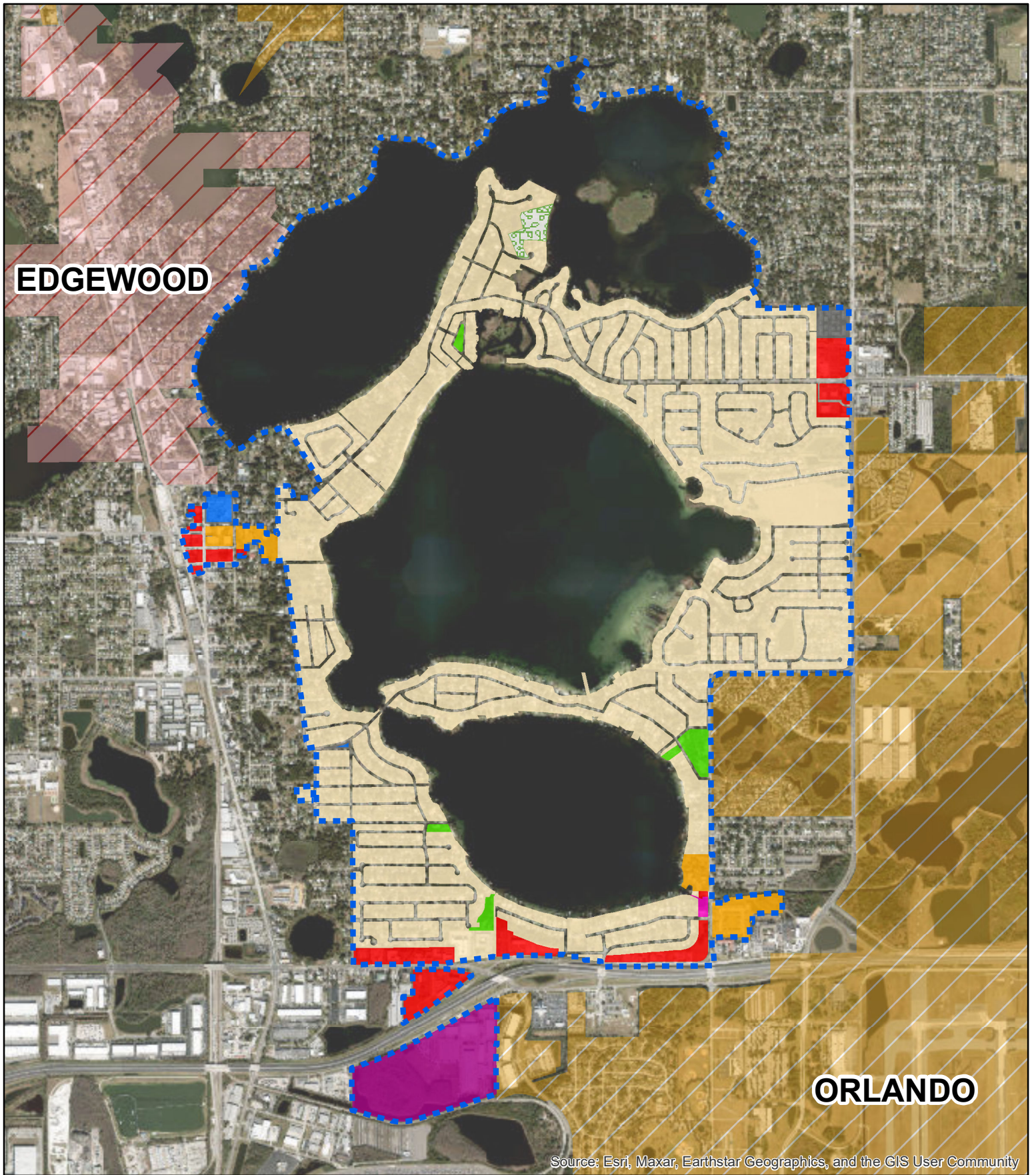
- 📍 City of Belle Isle, FL
- 📅 Date: 6/12/2024
- # 23002514
- 👤 Belle Isle

- 🔲 City Boundary
- 🟠 C-1
- 🔴 C-2
- 🟡 I-2

- 🟤 P-O
- 🟡 R-1-AA
- 🟠 R-2
- 🟤 R-3
- 🟡 R-1-A
- 🟢 PUB
- 🟡 Hydrology



Information furnished regarding this property is from sources deemed reliable. RVi has not made an independent investigation of these sources and no warranty is made as to their accuracy or completeness. This plan is conceptual, subject to change, and does not represent any regulatory approval.

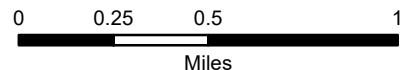


111 North Magnolia Ave
Suite 1350
Orlando, FL 32801
Tel: 407.775.6500
www.rviplanning.com

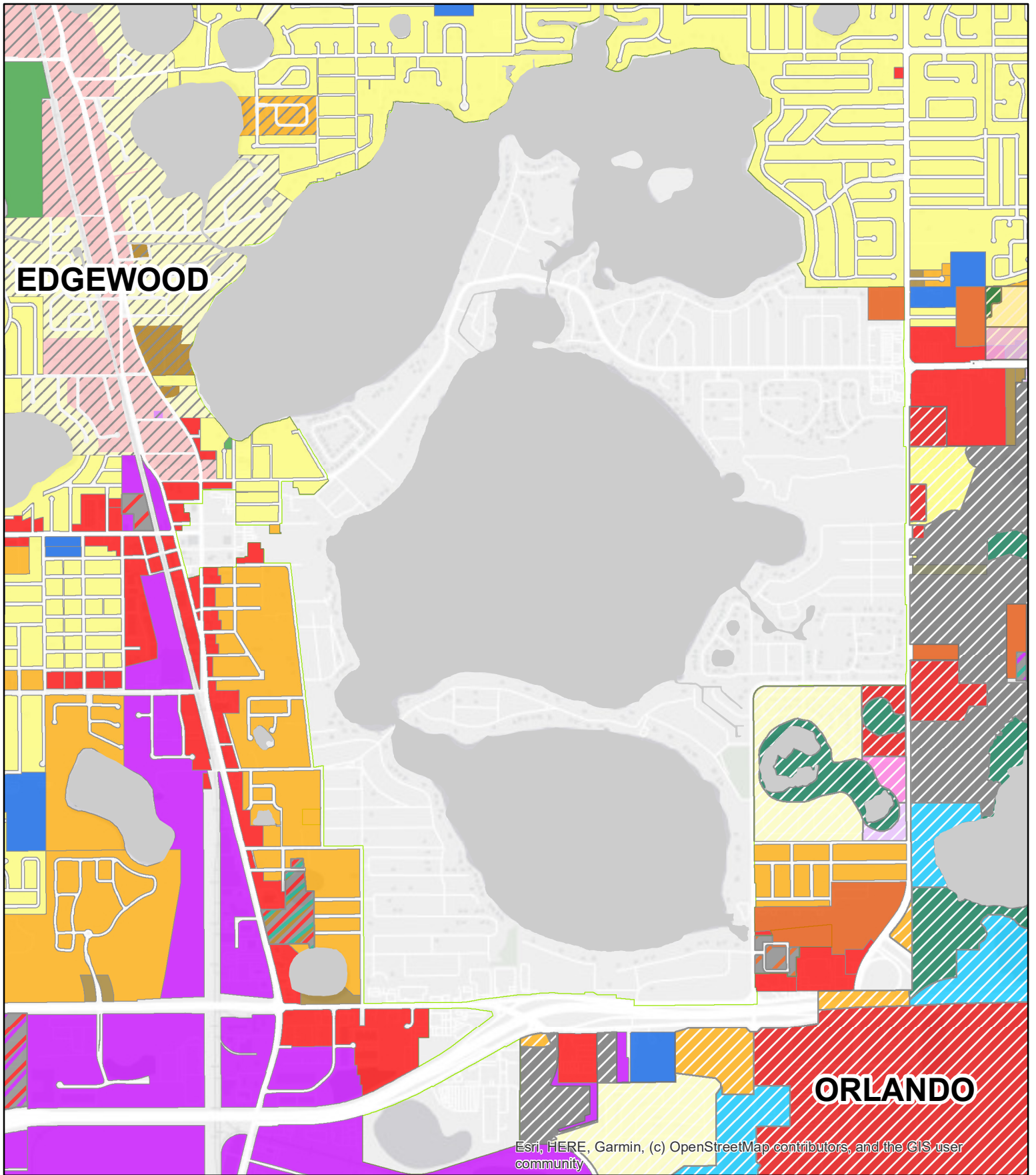
City of Belle Isle • FUTURE LAND USE

📍 City of Belle Isle, FL
📅 Date: 6/12/2024
23002514
👤 Belle Isle

- | | |
|----------------------------|-----------------------|
| Low Density Residential | Public Buildings |
| Medium Density Residential | Conservation |
| Commercial | Recreation/Open Space |
| Industrial | Unclassified |
| Professional - Office | |



Information furnished regarding this property is from sources deemed reliable. RVi has not made an independent investigation of these sources and no warranty is made as to their accuracy or completeness. This plan is conceptual, subject to change, and does not represent any regulatory approval.



City of Belle Isle • ADJACENT LAND USE

IRVI
 111 North Magnolia Ave.
 Suite 1350
 Orlando, FL 32801
 Tel: 407.775.6500
 www.rviplanning.com

📍 City of Belle Isle, FL
 📅 Date: 6/12/2024
 📄 # 23002514
 📍 Belle Isle

Edgewood - Land Use

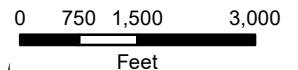
- Low Density Residential
- Medum Density Residential
- High Density Residential
- Commercial
- Institutional

Orlando - Land Use

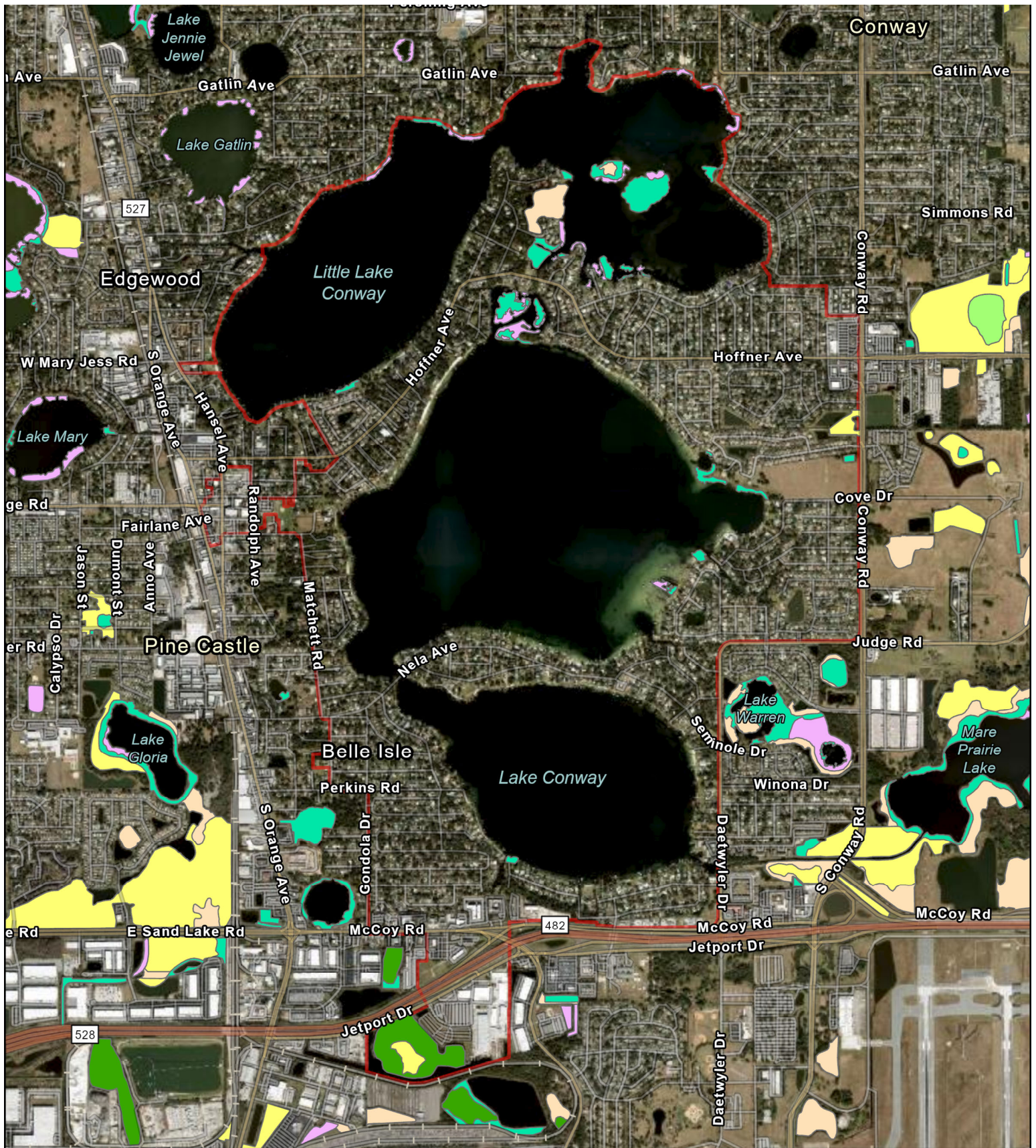
- Community Activity Center
- Conservation
- Industrial
- Metropolitan Activity Center
- Mixed Use Corridor Med. Intensity
- Office Low Intensity
- Office Medium Intensity
- Public/Recreational & Institutional
- Residential Low Intensity
- Residential Medium Intensity

Orange County - Land Use

- Commercial
- Industrial
- Institutional
- Office
- Low Density Residential
- Low-Medium Density Residential
- Medium Density Residential
- PD-Medium Density Residential
- PD - Commercial
- PD-Commercial/Industrial
- PD-Low Density Residential/Industrial
- PD-Office/Commercial/Medium Density Residential
- PR-OS



Information furnished regarding this property is from sources deemed reliable. IRVI has not made an independent investigation of these sources and no warranty is made as to their accuracy or completeness. This plan is conceptual, subject to change, and does not represent



**Belle Isle 2023
Comprehensive Plan**

📍 Belle Isle, FL
 📅 Date: 2/12/2024
 # 23002514

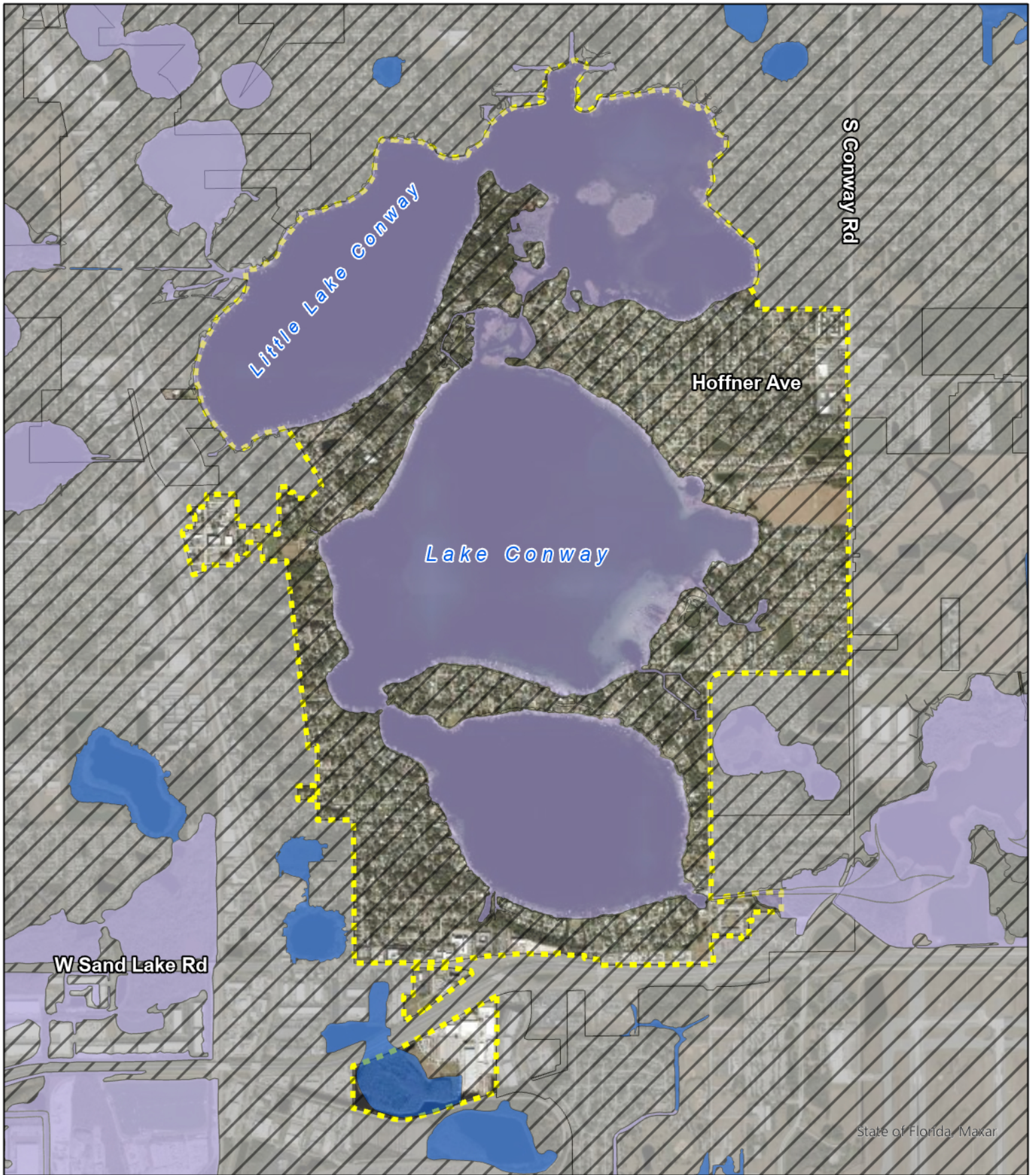
2022 Orange County Wetlands

- Cypress
- Hydric Pine Flatwoods
- Mixed Wetland Forests/
Hardwoods
- Mixed Scrub-Shrub
Wetlands
- Freshwater Marshes
- Other Wetlands



RVi
 111 N. Magnolia Avenue
 Suite 1350
 Orlando, FL 32801
 Tel: 407.775.6500
 www.rviplanning.com

Information furnished regarding this property is from sources deemed reliable. RVI has not made an independent investigation of these sources and no warranty is made as to their accuracy or

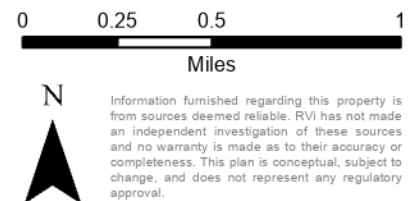


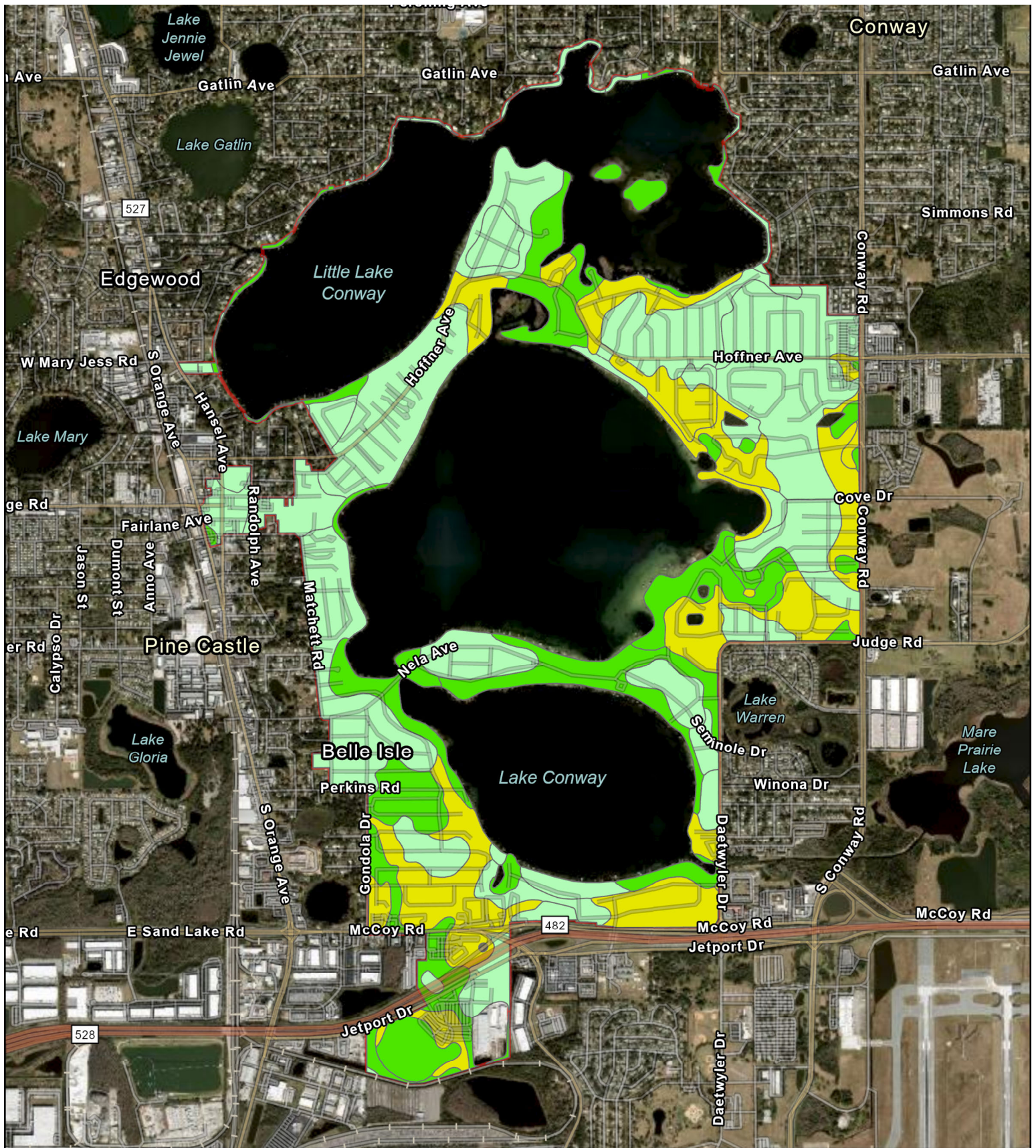
City of Belle Isle • FLOODPLAIN

RVi
 111 North Magnolia Ave
 Suite 1350
 Orlando, FL 32801
 Tel: 407.775.6500
 www.rviplanning.com

- 📍 City of Belle Isle, FL
- 📅 Date: 6/11/2024
- # 23002514
- 🏠 Belle Isle

-  City Boundary
-  Flood Zone A
-  Flood Zone X
-  Flood Zone AE





**Belle Isle 2023
Comprehensive Plan**

📍 Belle Isle, FL
 📅 Date: 2/12/2024
 # 23002514

2021 NRCS Soil Hydro Groups

- A
- A/D
- B/D



111 N. Magnolia Avenue
 Suite 1350
 Orlando, FL 32801
 Tel: 407.775.6500
 www.rviplanning.com



APPLIED
 ECOLOGY

Information furnished regarding this property is from sources deemed reliable. RVI has not made an independent investigation of these sources and no warranty is made as to their accuracy or

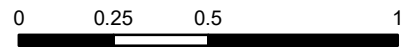


111 North Magnolia Ave
 Suite 1350
 Orlando, FL 32801
 Tel: 407.775.6500
 www.rviplanning.com

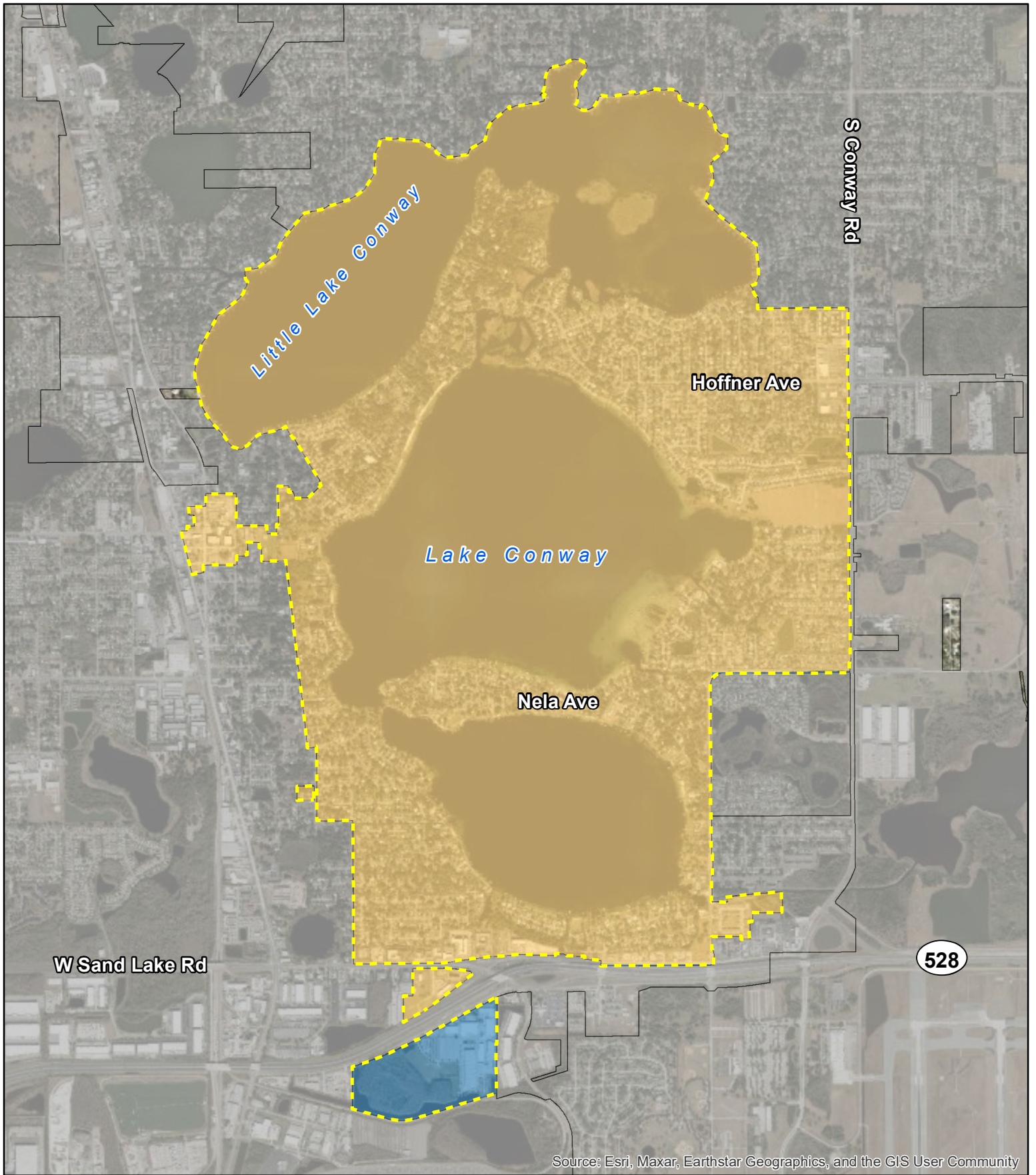
City of Belle Isle • WATER SERVICE PROVIDER

- 📍 City of Belle Isle, FL
- 📅 Date: 6/12/2024
- # 23002514
- 👤 Belle Isle

- Orange County
- Orlando Utilities Commission



Information furnished regarding this property is from sources deemed reliable. RVI has not made an independent investigation of these sources and no warranty is made as to their accuracy or completeness. This plan is conceptual, subject to change, and does not represent any regulatory approval.

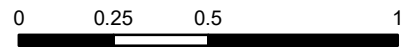


111 North Magnolia Ave
 Suite 1350
 Orlando, FL 32801
 Tel: 407.775.6500
 www.rviplanning.com

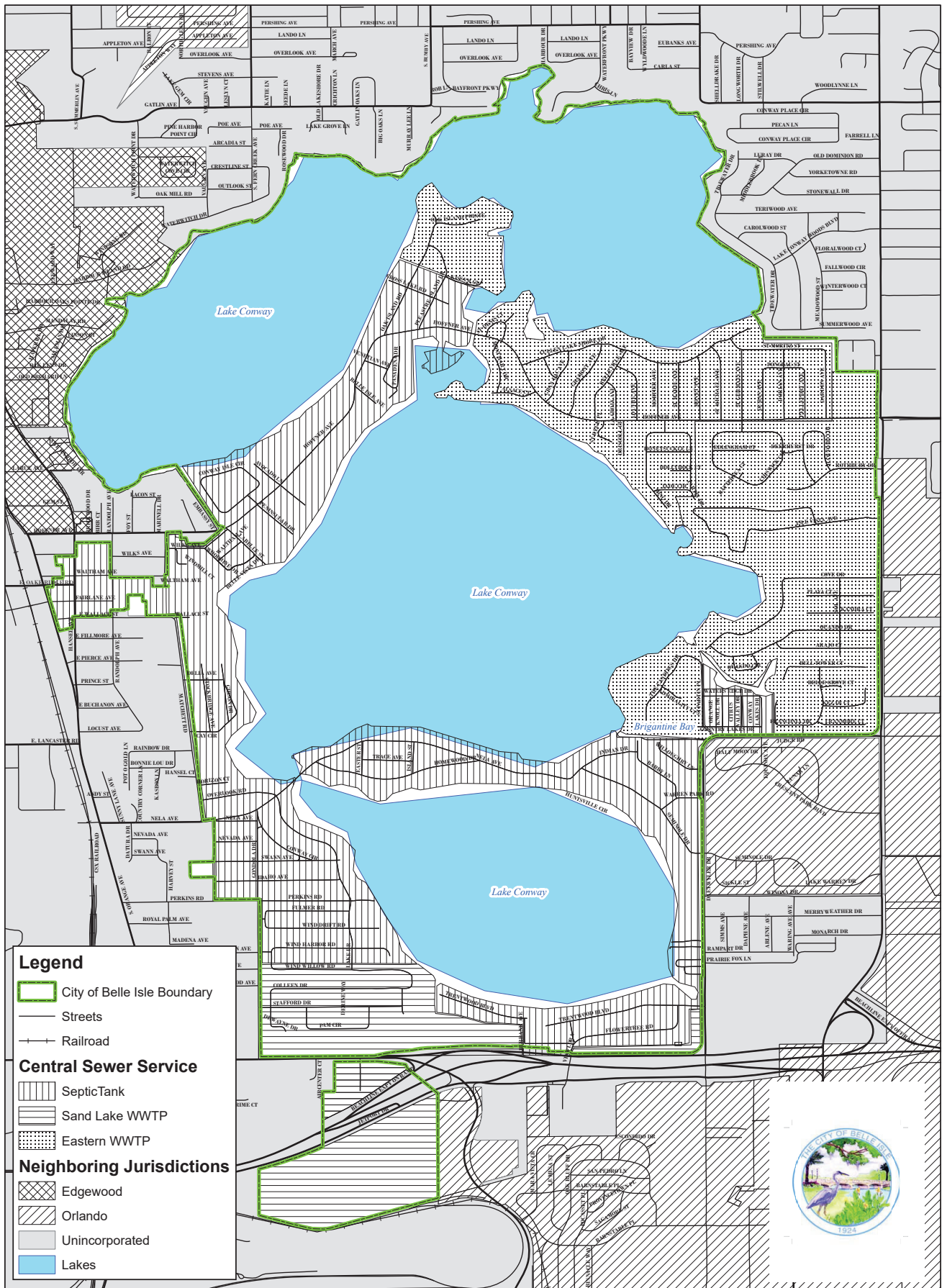
City of Belle Isle • WASTEWATER SERVICE PROVIDER

- City of Belle Isle, FL
- Date: 6/12/2024
- # 23002514
- Belle Isle

- Orange County
- Orlando



Information furnished regarding this property is from sources deemed reliable. RVI has not made an independent investigation of these sources and no warranty is made as to their accuracy or completeness. This plan is conceptual, subject to change, and does not represent any regulatory approval.



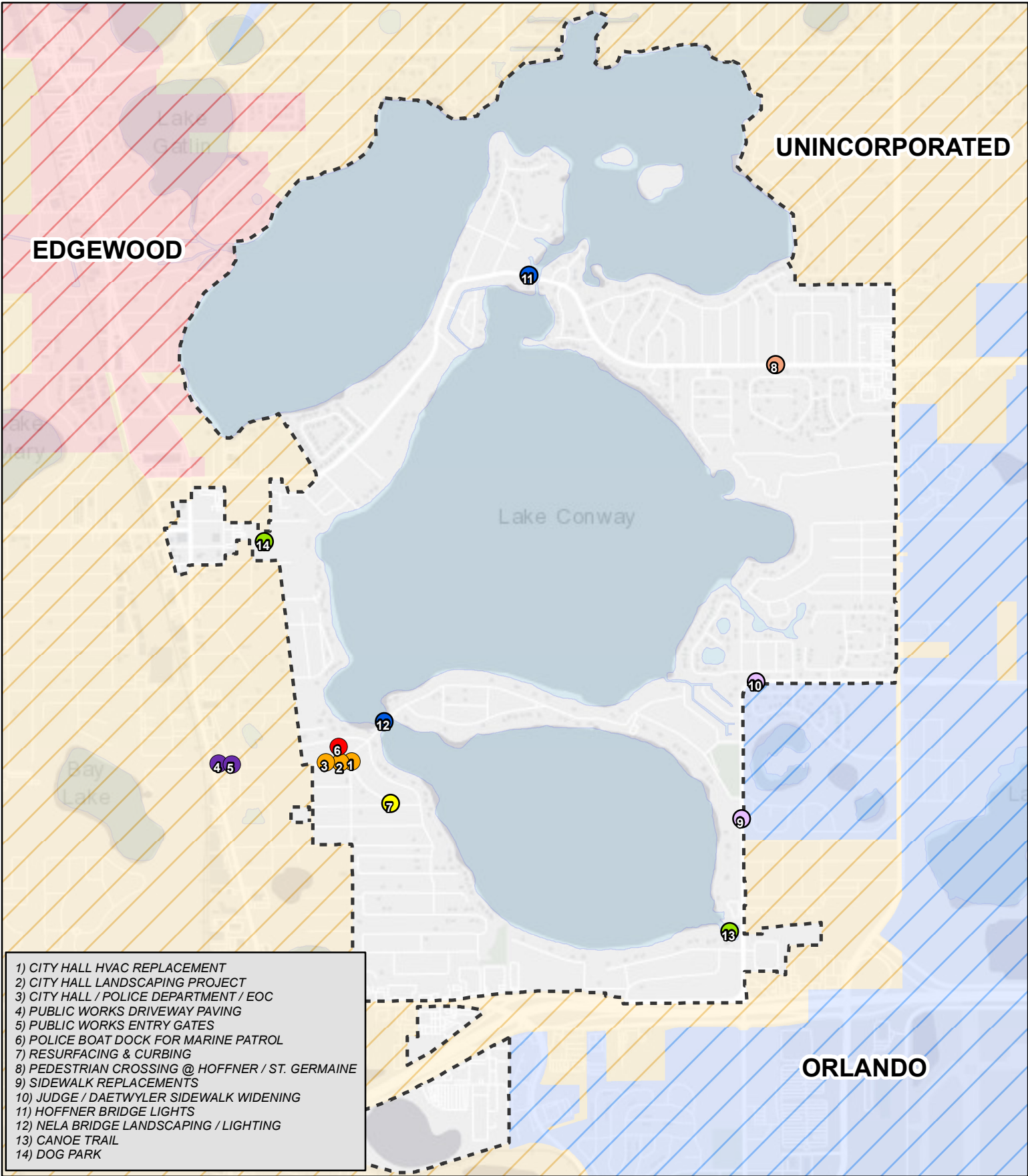
Map 10: City of Belle Isle Central Sewer Service Areas

0 800 1,600 3,200 4,800 6,400 Feet

1 in = 1,500 ft



Source: Orange County Property Appraiser and GIS
Effective: January 2009



- 1) CITY HALL HVAC REPLACEMENT
- 2) CITY HALL LANDSCAPING PROJECT
- 3) CITY HALL / POLICE DEPARTMENT / EOC
- 4) PUBLIC WORKS DRIVEWAY PAVING
- 5) PUBLIC WORKS ENTRY GATES
- 6) POLICE BOAT DOCK FOR MARINE PATROL
- 7) RESURFACING & CURBING
- 8) PEDESTRIAN CROSSING @ HOFFNER / ST. GERMAINE
- 9) SIDEWALK REPLACEMENTS
- 10) JUDGE / DAETWYLER SIDEWALK WIDENING
- 11) HOFFNER BRIDGE LIGHTS
- 12) NELA BRIDGE LANDSCAPING / LIGHTING
- 13) CANOE TRAIL
- 14) DOG PARK

Document Path: L:\2023\23002514- Belle Isle Comprehensive Plan Update\04 PROJECT DATA\02 GIS\00 MXDs\capital improvement plan.mxd

RVi
 111 North Magnolia Ave
 Suite 1350
 Orlando, FL 32801
 Tel: 407.775.6500
 www.rviplanning.com

City of Belle Isle • CAPITAL IMPROVEMENT PLAN

- 📍 City of Belle Isle, FL
- 📅 Date: 6/12/2024
- 🏠 # 23002514
- 👤 Belle Isle
- 🗶 City Boundary
- 🌉 Bridges
- 🏢 Buildings
- 🏗️ Infrastructure
- 🌳 Parks
- 👮 Police Dept
- 🚶 Sidewalks
- 🛣️ Streets
- 🚦 Traffic Calming

