

DESIGN CRITERIA

Width (ft)	= 54
Length (ft)	= 81.1
Eave Height (ft)	= 22.25 / 22.25
Roof Slope (Rise/12)	= 3.000:12
Dead Load (psf)	= 2.000
Collateral Load (psf)	= 2
Roof Live Load (psf)	= 20.00
Frame Live Load (psf)	= 12.0
Snow Load (psf)	= 0
Wind Speed (mph)	= 136
Wind Code	= IBC 18
Occupancy Category	= 1.00
Exposure	= B
Closed/Open/Partial	= CLOSED
Importance - Wind	= 1.00
Internal GCpi	= 0.18 / -0.18
Seismic Use Group (SUG)	= A
Seismic Site Class	= d
Mapped Response (Ss)	= 0.0609
Mapped Response (S1)	= 0.0330
Design Category (SDC)	= A
Importance - Seismic	= 1.00
Site Coeff (Fa)	= 1.6000
Site Coeff (Fv)	= 2.4000
Design Response (Sms)	= 0.10
Design Response (Sm1)	= 0.0792
Design Response (Sds)	= 0.064
Design Response (Sd1)	= 0.053
Res Mod Factor (Mom) R	= 3.00
App Period (Moment) Ta	= 0.2908
Res Mod Factor (Br) R	= 3.00
App Period (Braced) Ta	= 0.1794

NOTE: THE SEISMIC ANALYSIS PROCEDURE USED ON THIS STRUCTURE IS THE EQUIVALENT LATERAL FORCE PROCEDURE.

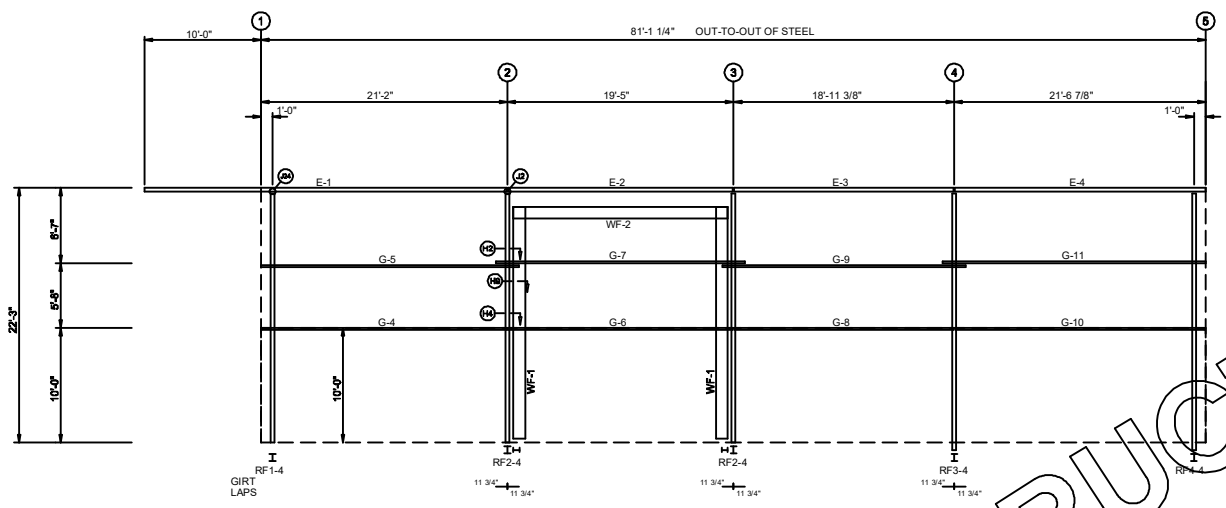
<u>Structural Steel</u>	
ASTM# (Plate)	= A1011
Plate Yield (Fy)	= 55.0 ksi
ASTM# (Bar)	= A592
Plate Yield (Fy)	= 55.0 ksi

<u>Light Gage Steel</u>	
ASTM# (Cold-Form)	= A1011
Cold-Form Yield (Fy)	= 55.0 ksi
ASTM# (Panel)	= A792
Panel Yield (Fy)	= 80.0 ksi

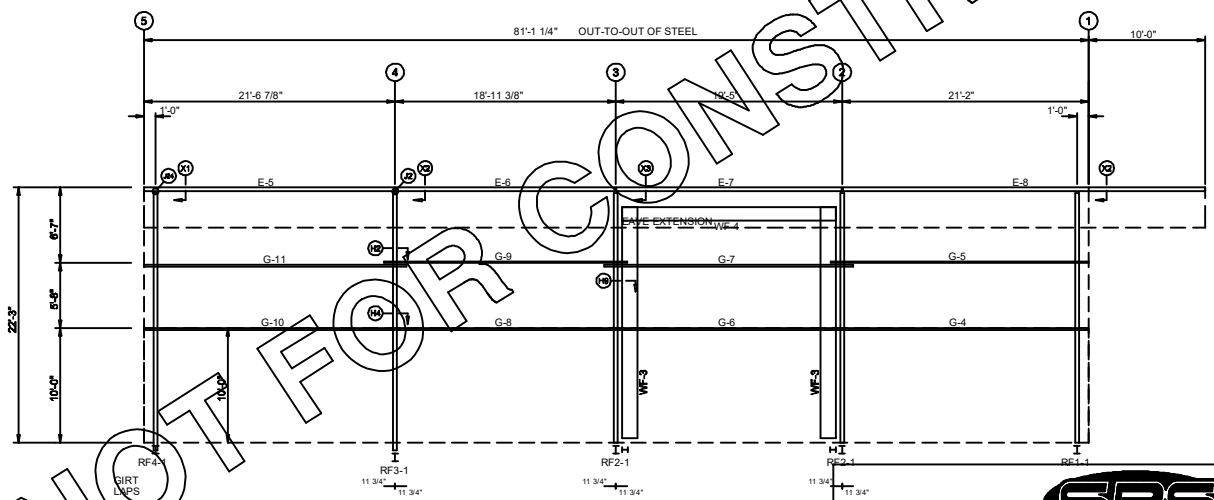
NOTE: ALL CONNECTION BOLTS ARE DESIGNATED IN THESE DRAWINGS AS EITHER A "M" FOR A307 BOLTS OR A "H" FOR A325 BOLTS.

NOTES TO ERECTOR/OWNER:

- [1] "SBS" IS NOT RESPONSIBLE FOR THE ERECTION OF THE BUILDING, THE SUPPLY OF ANY TOOLS OR EQUIPMENT, OR ANY OTHER FIELD WORK UNLESS "SBS" HAS BEEN CONTRACTED FOR THESE. "SBS" DOES NOT PROVIDE ANY FIELD SUPERVISION FOR THE ERECTION OF THE BUILDING, NOR DOES "SBS" PERFORM ANY INSPECTIONS DURING OR AFTER ERECTION.
- [2] USE ONLY THE ERECTION DRAWINGS PROVIDED BY "SBS" AND INCLUDED IN THE ERECTOR'S PACKAGE DELIVERED BY THE TRUCK DRIVER WITH THE BUILDING. "SBS" IS NOT LIABLE FOR ANY CLAIM RESULTING FROM THE USE OF OTHER DRAWINGS.
- [3] CHECK SLAB AND ANCHOR BOLT PLACEMENTS BEFORE STANDING ANY FRAMING. IF THE SLAB IS NOT SIZED CORRECTLY OR IS OUT OF SQUARE, OR IF THE ANCHOR BOLTS ARE NOT CORRECTLY LOCATED, CALL "SBS". "SBS" IS NOT LIABLE FOR LABOR CHARGES RESULTING FROM STANDING FRAMING ON AN INCORRECT SLAB.
- [4] BEGIN ERECTION WITH A BRACED BAY. INSTALL THE EAVE STRUTS FIRST AND THEN THE PURLINS WHICH FALL AT THE CABLE ATTACHMENT POINTS. NEXT, INSTALL ROOF AND WALL CABLES TO A SNUG CONDITION, SO THAT THE FRAMING IS BRACED. FINISH INSTALLING PURLINS AND GIRTS IN THE BRACED BAY. USING THE THE CABLE BRACING, SQUARE AND PLUMB THE FRAMING. CONTINUE WITH REMAINING BAYS, INSTALLING BRACING AS ADDITIONAL BRACED BAYS ARE ERECTED.
- [5] THE CORRECTION OF MINOR MISFITS BY THE USE OF DRIFT PINS TO DRAW THE COMPONENTS INTO LINE, MODERATE AMOUNTS OF REAMING, CHIPPING AND CUTTING, AND THE REPLACEMENT OF MINOR SHORTAGES OF MATERIAL ARE A NORMAL PART OF ERECTION AND ARE NOT SUBJECT TO CLAIM. CONTACT "SBS" BEFORE MAKING ANY FIELD MODIFICATION TO THE BUILDING. "SBS" DOES NOT PAY CLAIMS FOR ERROR CORRECTION UNLESS APPROVED IN WRITING BY "SBS" BEFOREHAND.



SIDEWALL FRAMING: FRAME LINE A



SIDEWALL FRAMING: FRAME LINE D

BOLT TABLE				
FRAME LINE A & D				
LOCATION	QUAN	TYPE	DIA	LENGTH
WF-1 - WF-2	8	A325	5/8"	2 1/2"
WF-1 - RF2-4	16	A325	5/8"	2 1/2"
WF-3 - WF-4	8	A325	5/8"	2 1/2"
WF-3 - RF2-1	16	A325	5/8"	2 1/2"

MEMBER TABLE		
FRAME LINE A & D		
MARK	PART	LENGTH
WF-1	B12X13.8	20'-7"
WF-2	B12X13.8	17'-4 1/4"
WF-3	B16X15.6	20'-7"
WF-4	B14X14.7	16'-8 1/4"
E-1	10ES14@2	31'-1 1/2"
E-2	10ES14@2	19'-4 1/2"
E-3	10ES14@2	18'-10 7/8"
E-4	10ES14@2	21'-6 3/8"
E-5	10ES14@3	21'-6 3/8"
E-6	10ES14@3	18'-10 7/8"
E-7	10ES14@3	19'-4 1/2"
E-8	10ES14@3	31'-1 1/2"
G-4	8x25C16	21'-1 1/2"
G-5	8x25Z16	22'-1 1/2"
G-6	8x25C16	19'-4 1/2"
G-7	8x25Z16	21'-4 1/2"
G-8	8x25C16	18'-10 7/8"
G-9	8x25Z16	20'-10 7/8"
G-10	8x25C16	21'-6 3/8"
G-11	8x25Z16	22'-6 3/8"

NOT FOR CONSTRUCTION

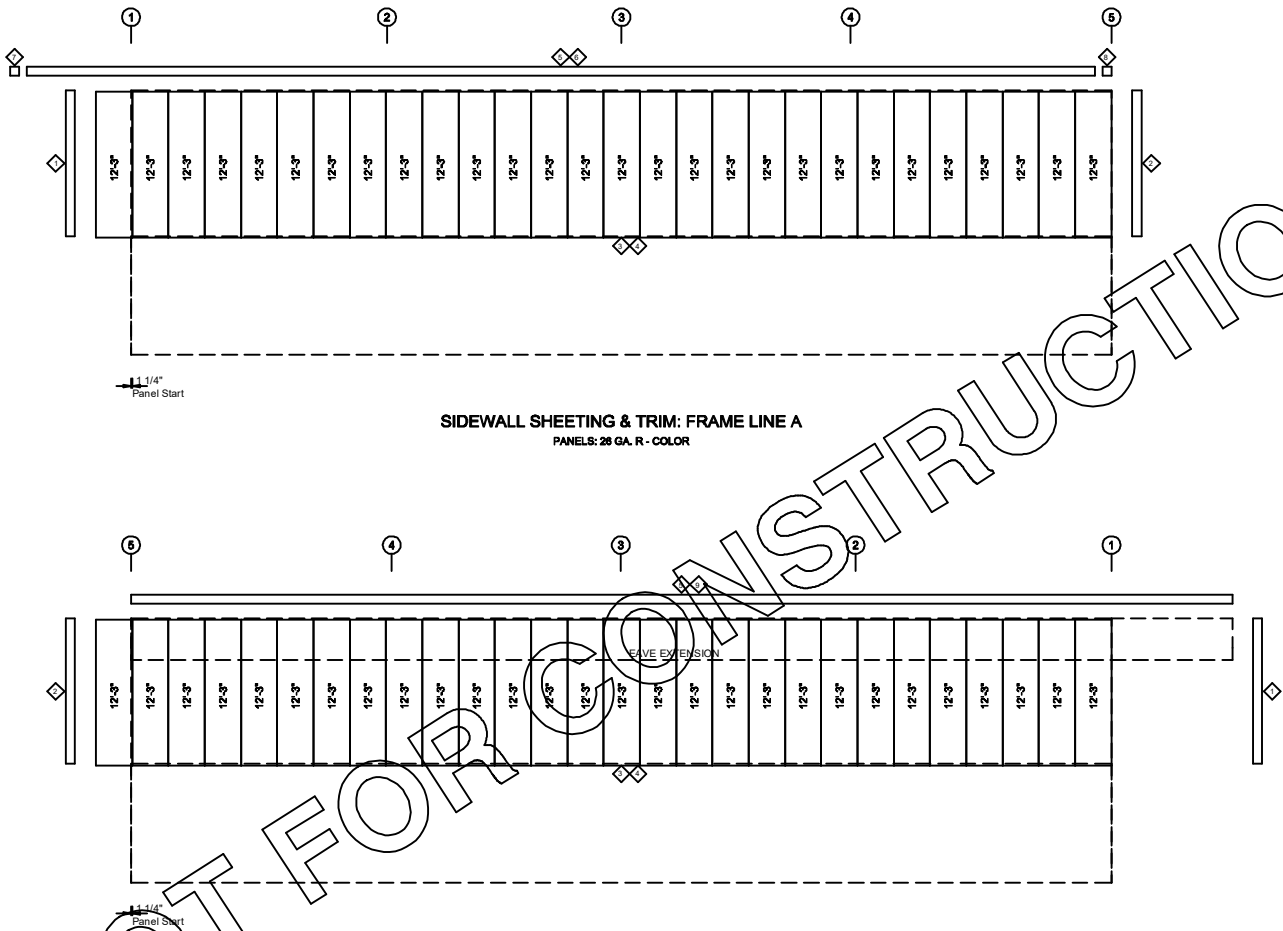


STEEL BUILDING SYSTEMS INC.

REVISIONS	CUSTOMER: REGAL BOATS	
[1]	JOB NO: BOAT DOCK	DATE: 2/28/23
[2]	LOCATION:	
[3]	DRAWING NAME: SIDEWALL FRAMING LAYOUT	SCALE: NONE
[4]	DRAWING NO: PAGE 3	DRAWN BY: CHECKED BY:

*** NOTE ***

THIS DRAWING IS FOR ESTIMATING PURPOSES ONLY.
 THIS DRAWING IS NOT FOR CONSTRUCTION.
 THIS DRAWING IS THE PROPERTY OF STEEL BUILDING SYSTEMS, INC.



SIDEWALL SHEETING & TRIM: FRAME LINE A
PANELS: 26 GA. R - COLOR

SIDEWALL SHEETING & TRIM: FRAME LINE D
PANELS: 26 GA. R - COLOR

TRIM TABLE	
FRAME LINE A & D	
ID PART	LENGTH
1 R JAMB	12'-6"
2 O/S CORN	12'-3"
3 BASE TRM	20'-3"
4 BASE TRM	1'-2"
5 EAVE TRM	20'-3"
6 EAVE TRM	11'-2"
7 R END LH	
8 R END RH	
9 EAVE TRM	1'-2"

NOT FOR CONSTRUCTION

SBS	
STEEL BUILDING SYSTEMS INC.	
REVISIONS	CUSTOMER: REGAL BOATS
[1]	JOB NO: BOAT DOCK DATE: 2/28/23
[2]	LOCATION:
[3]	DRAWING NAME: SIDEWALL PANELS & TRIM SCALE: NONE
[4]	DRAWING NO: PAGE 7 DRAWN BY: CHECKED BY:

*** NOTE ***

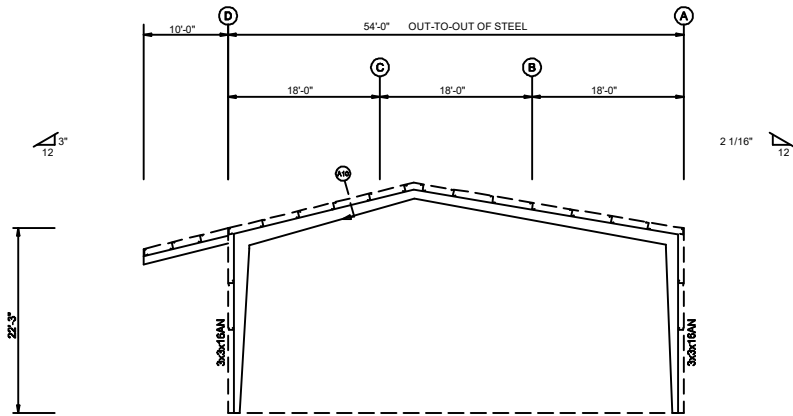
THIS DRAWING IS FOR ESTIMATING PURPOSES ONLY.

THIS DRAWING IS NOT FOR CONSTRUCTION.

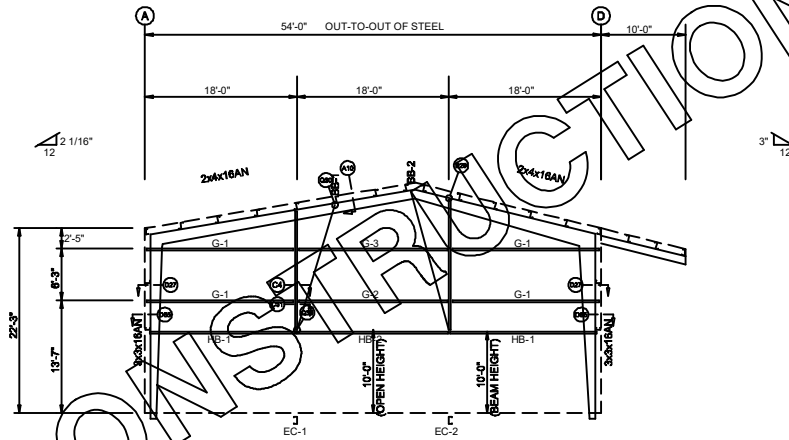
THIS DRAWING IS THE PROPERTY OF STEEL BUILDING SYSTEMS, INC.

BOLT TABLE				
FRAME LINE 1 & 5				
LOCATION	QUAN	TYPE	DIA	LENGTH
Columns/Raf	8	A325	5/8"	2 1/2"
Back Braces	1	A325	5/8"	2 1/2"

MEMBER TABLE		
FRAME LINE 1 & 5		
MARK	PART	LENGTH
HB-1	8X25C16	16'-11 1/2"
HB-2	8X25C16	17'-11 1/2"
BB-1	B8X17	24'-9 3/8"
BB-2	B8X17	25'-7 1/16"
EC-1	8X25C12	14'-0 15/16"
EC-2	8X35C12	15'-5 5/8"
G-1	8x25Z16	17'-7 1/2"
G-2	8x25Z16	17'-11 1/2"
G-3	8x25Z14	17'-11 1/2"



ENDWALL FRAMING: FRAME LINE 1



ENDWALL FRAMING: FRAME LINE 5

NOT FOR CONSTRUCTION

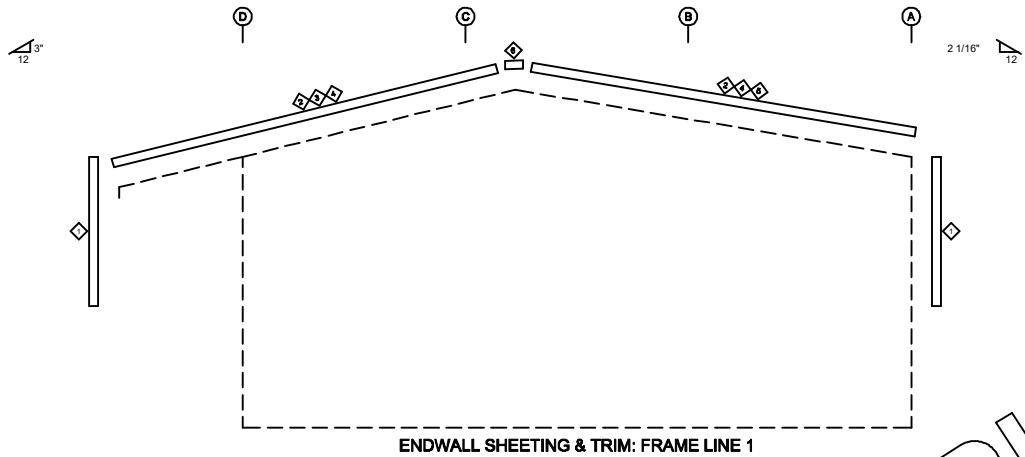
SBS	
STEEL BUILDING SYSTEMS INC.	
REVISIONS	CUSTOMER: REGAL BOATS
[1]	JOB NO: BOAT DOCK DATE: 2/28/23
[2]	LOCATION:
[3]	DRAWING NAME: ENDWALL FRAMING LAYOUT SCALE: NONE
[4]	DRAWING NO: PAGE 4 DRAWN BY: CHECKED BY:

*** NOTE ***

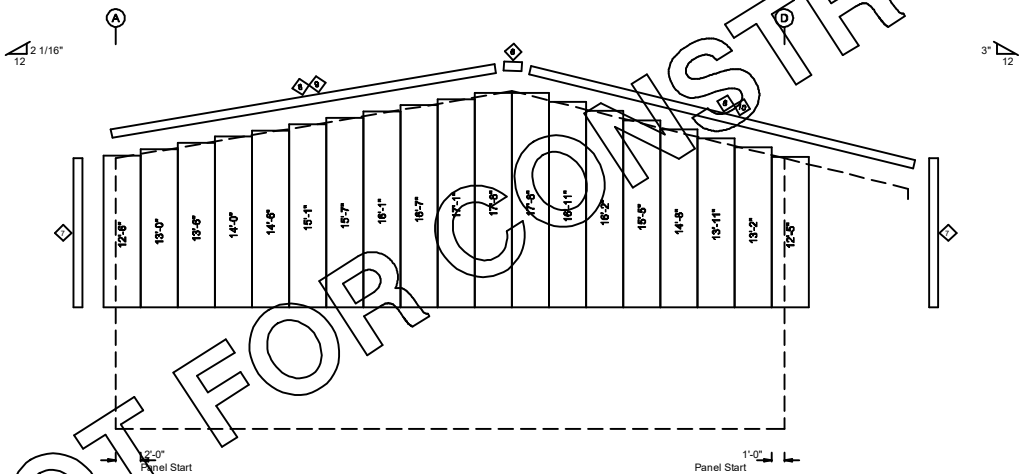
THIS DRAWING IS FOR ESTIMATING PURPOSES ONLY.

THIS DRAWING IS NOT FOR CONSTRUCTION.

THIS DRAWING IS THE PROPERTY OF STEEL BUILDING SYSTEMS, INC.



ENDWALL SHEETING & TRIM: FRAME LINE 1




ENDWALL SHEETING & TRIM: FRAME LINE 5
PANELS: 28 GA. R - COLOR

TRIM TABLE	
FRAME LINE 1 & 5	
ID	PART
1	R JAMB
2	PART-BOT
3	PART-BOT
4	PART-TOP
5	PART-BOT
6	PEAK BOX
7	O/S CORN
8	RAKE TRM
9	RAKE TRM
10	RAKE TRM

ID	PART	LENGTH
1	R JAMB	12'-6"
2	PART-BOT	20'-3"
3	PART-BOT	2'-9"
4	PART-TOP	5'-0"
5	PART-BOT	12'-6"
6	PEAK BOX	
7	O/S CORN	12'-3"
8	RAKE TRM	20'-3"
9	RAKE TRM	12'-6"
10	RAKE TRM	13'-0"

NOT FOR CONSTRUCTION



STEEL BUILDING SYSTEMS INC.

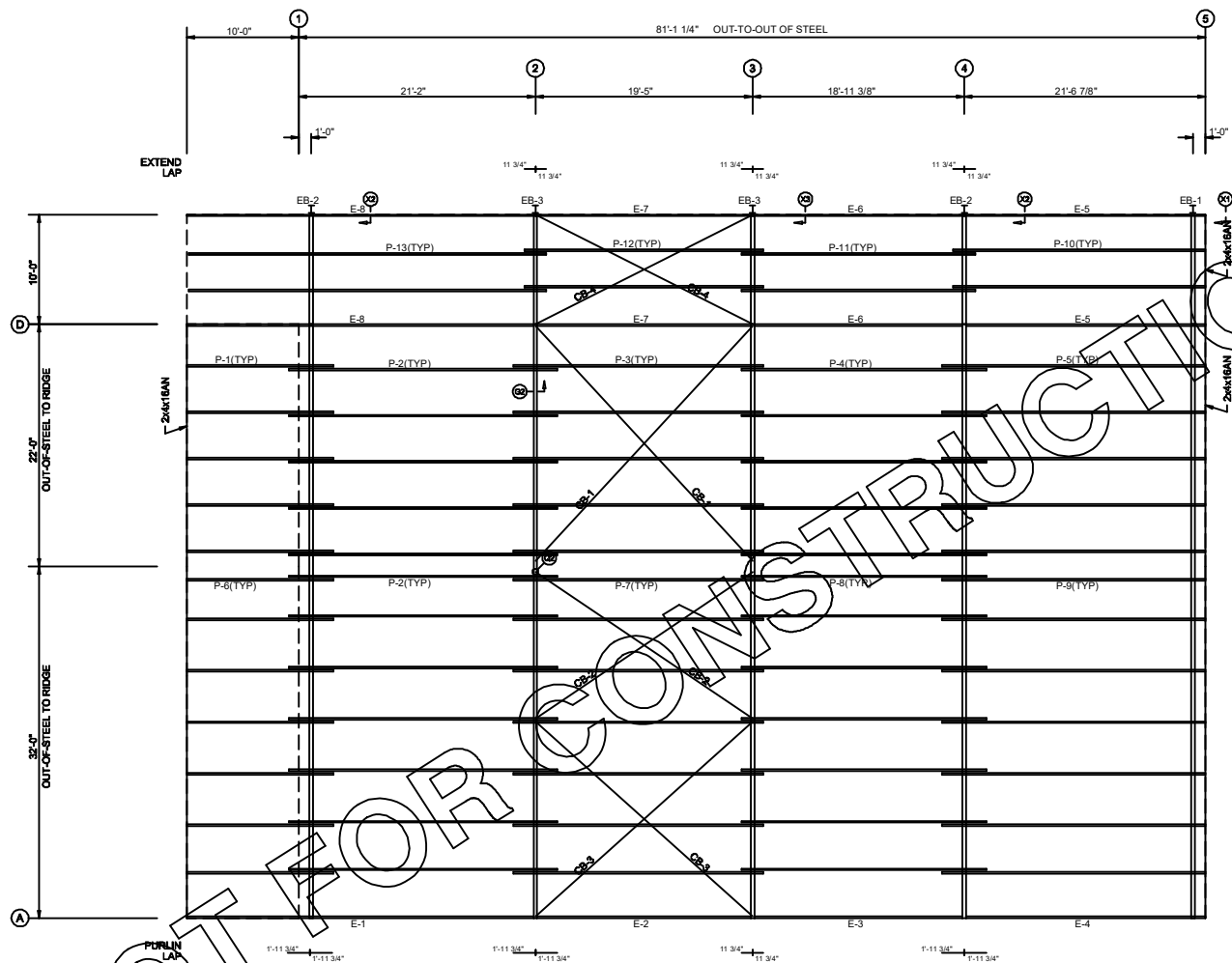
REVISIONS	CUSTOMER: REGAL BOATS	
[1]	JOB NO.: BOAT DOCK	DATE: 2/28/23
[2]	LOCATION:	
[3]	DRAWING NAME: ENDWALL PANELS & TRIM	SCALE: NONE
[4]	DRAWING NO.: PAGE 8	DRAWN BY: CHECKED BY:

*** NOTE ***

THIS DRAWING IS FOR ESTIMATING PURPOSES ONLY.

THIS DRAWING IS NOT FOR CONSTRUCTION.

THIS DRAWING IS THE PROPERTY OF STEEL BUILDING SYSTEMS, INC.



EXTENSION/CANOPY BOLTS				
ROOF PLAN				
MARK	QUAN	TYPE	DIA	LENGTH
EB-1	4	A325	5/8"	2 1/2"
EB-2	4	A325	1"	2 3/4"
EB-3	4	A325	1"	2 3/4"

MEMBER TABLE		
ROOF PLAN		
MARK	PART	LENGTH
EB-1	B12X15.5	10'-6 3/4"
EB-2	B10X18	10'-6 1/4"
EB-3	B10X18	10'-6 1/4"
P-1	10x25Z12	12'-11 1/2"
P-2	10x25Z12	24'-1 1/2"
P-3	10x25Z16	22'-4 1/2"
P-4	10x25Z16	21'-10 7/8"
P-5	10x25Z16	23'-6 3/8"
P-6	10x25Z12	12'-11 1/2"
P-7	10x25Z16	22'-4 1/2"
P-8	10x25Z16	21'-10 7/8"
P-9	10x25Z16	23'-6 3/8"
P-10	10x35Z14	22'-6 3/8"
P-11	10x35Z14	20'-10 7/8"
P-12	10x35Z14	21'-4 1/2"
P-13	10x35Z14	32'-1 1/2"
E-1	10ES14@2	31'-1 1/2"
E-2	10ES14@2	19'-4 1/2"
E-3	10ES14@2	18'-10 7/8"
E-4	10ES14@2	21'-6 3/8"
E-5	10ES14@3	21'-6 3/8"
E-6	10ES14@3	18'-10 7/8"
E-7	10ES14@3	19'-4 1/2"
E-8	10ES14@3	31'-1 1/2"
CB-1	1/4 CBL	28'-2 7/8"
CB-2	1/4 CBL	23'-5 9/16"
CB-3	1/4 CBL	24'-7 11/16"
CB-4	1/4 CBL	21'-6 1/16"

10'-0"
OUT-OF-STEEL TO RIDGE
32'-0"
OUT-OF-STEEL TO RIDGE

ROOF FRAMING PLAN



STEEL BUILDING SYSTEMS INC.

REVISIONS	CUSTOMER: REGAL BOATS	
[1]	JOB NO: BOAT DOCK	DATE: 2/28/23
[2]	LOCATION:	
[3]	DRAWING NAME: ROOF FRAMING LAYOUT	SCALE: NONE
[4]	DRAWING NO: PAGE 2	DRAWN BY: CHECKED BY:

*** NOTE ***
THIS DRAWING IS FOR ESTIMATING PURPOSES ONLY.
THIS DRAWING IS NOT FOR CONSTRUCTION.
THIS DRAWING IS THE PROPERTY OF STEEL BUILDING SYSTEMS, INC.

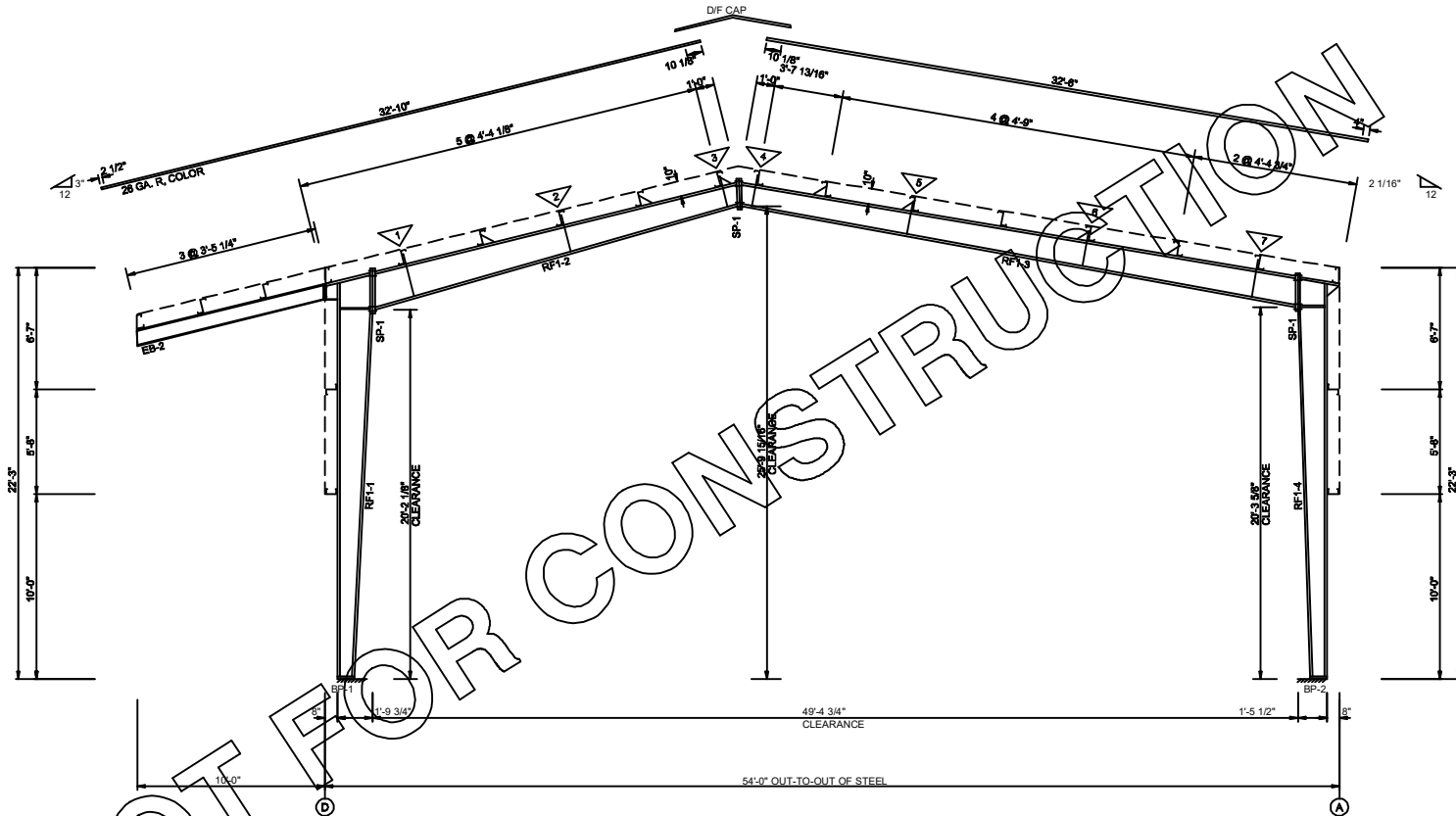
NOT FOR CONSTRUCTION

SPLICE BOLT TABLE							
MARK	QTY	TOP	BOT	INT	TYPE	DIA	LENGTH
SP-1	4	4	0	0	A325	5/8"	2 1/2"

BASE PLATE TABLE			
COL	PLATE SIZE		
MARK	WIDTH	THICK	LENGTH
BP-1	6"	1/2"	8 1/2"
BP-2	8"	3/8"	8 1/4"

FLANGE BRACE TABLE			
#	MARK	LENGTH	
1	FB14	2-9 11/16"	
2	FB10	2-7 5/16"	
3	FB2	2-5 1/4"	
4	FB1	2-5 3/16"	
5	FB5	2-5 7/8"	
6	FB7	2-6 11/16"	
7	FB11	2-7 9/16"	

MARK	WEB DEPTH		WEB PLATE		OUTSIDE FLANGE W x THK x LENGTH	INSIDE FLANGE W x THK x LENGTH
	START/END	THICK	THICK	LENGTH		
RF1-1	7.9/11.1	0.135	4-11 1/16"	14-10"	6 x 1/4" x 20'-0"	8 x 1/2" x 19'-9 7/16"
	11.1/21.0	0.135	14-10"	14-10"	6 x 1/4" x 1'-5 15/16"	
	21.0/21.0	0.188	2-2 3/16"	14-10"	5 x 1/4" x 2'-5 5/16"	
RF1-2	21.0/14.4	0.135	14-10"	5-8 3/16"	5 x 1/4" x 19'-0 7/8"	5 x 1/4" x 1'-0"
	14.4/12.0	0.135	5-8 3/16"	1'-0"	5 x 1/4" x 1'-0"	5 x 1/4" x 19'-3 3/4"
RF1-3	12.0/12.1	0.135	1'-0"	14-7 1/8"	5 x 1/4" x 10'-2 3/16"	5 x 1/4" x 10'-2 5/8"
	12.1/14.5	0.135	14-7 1/8"	14-10"	5 x 1/4" x 20'-0"	5 x 1/4" x 20'-0"
RF1-4	14.5/17.0	0.135	14-10"	1'-9 13/16"	5 x 1/4" x 2'-1 9/16"	8 x 1/4" x 19'-10 15/16"
	17.0/17.0	0.188	1'-9 13/16"	14-10"	8 x 1/4" x 1'-5 5/8"	
	17.0/10.1	0.135	14-10"	5'-0 3/4"	8 x 1/4" x 20'-0"	
EB-2	10.1/7.8	0.135	5'-0 3/4"			
	B10X18					



RIGID FRAME ELEVATION: FRAME LINE 1

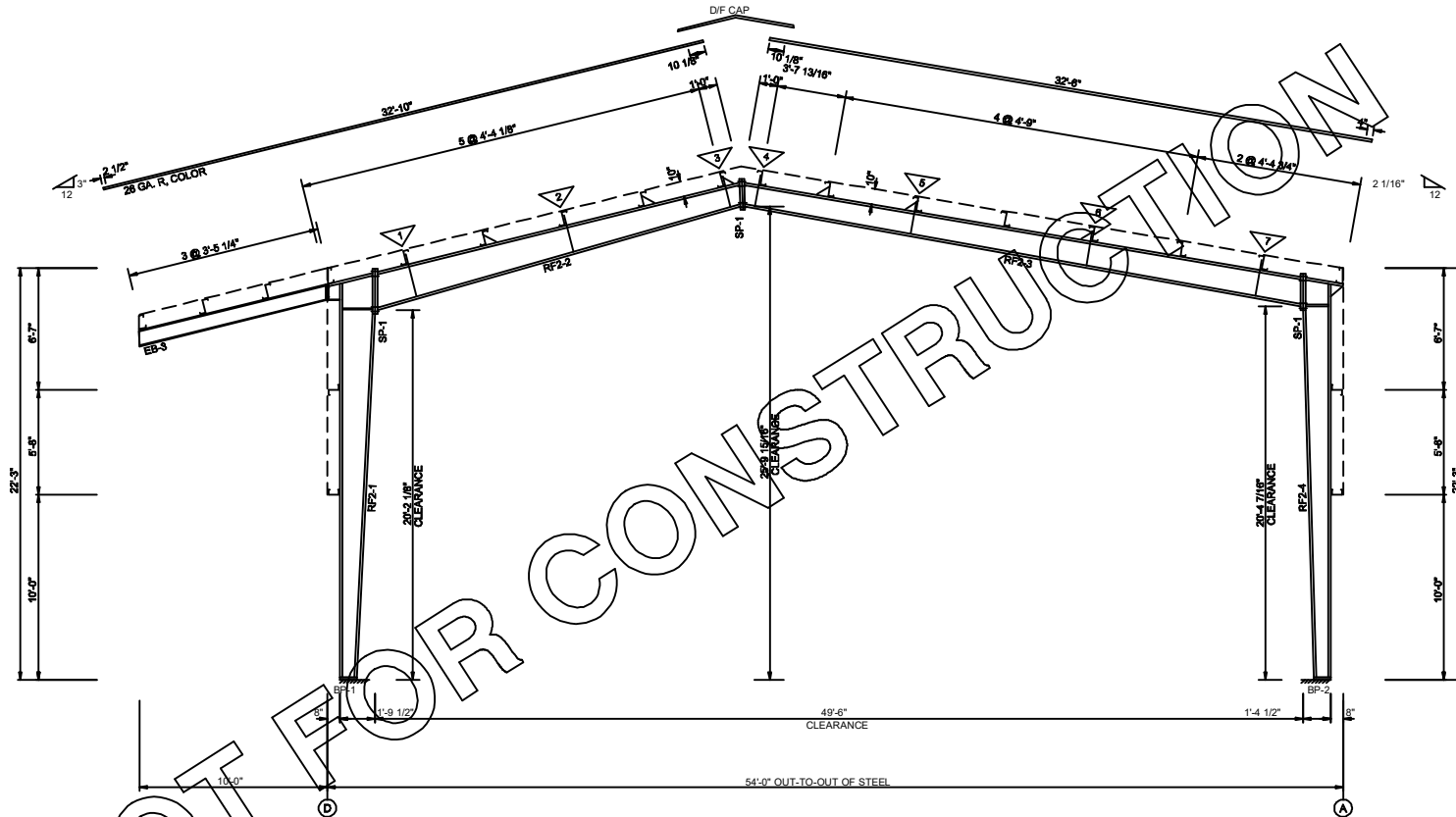
		<p>*** NOTE ***</p> <p>THIS DRAWING IS FOR ESTIMATING PURPOSES ONLY.</p> <p>THIS DRAWING IS NOT FOR CONSTRUCTION.</p> <p>THIS DRAWING IS THE PROPERTY OF STEEL BUILDING SYSTEMS, INC.</p>	
		<p>REVISIONS</p>	<p>CUSTOMER: REGAL BOATS</p>
<p>[1]</p>	<p>LOCATION:</p>	<p>DRAWING NAME: RIGID FRAME CROSS SECTION</p>	<p>SCALE: NONE</p>
<p>[2]</p>	<p>DRAWING NO: PAGE 2.1</p>	<p>DRAWN BY:</p>	<p>CHECKED BY:</p>

SPLICE BOLT TABLE							
MARK	QTY	TOP	BOT	INT	TYPE	DIA	LENGTH
SP-1	4	4	0	0	A325	5/8"	2 1/2"

BASE PLATE TABLE			
COL	PLATE SIZE		
MARK	WIDTH	THICK	LENGTH
BP-1	6"	1/2"	8 1/4"
BP-2	8"	1/2"	8 1/4"

FLANGE BRACE TABLE			
FRAME LINE 2 3			
#	SIDES	MARK	LENGTH
1	2	FB14	2'-9 11/16"
2	2	FB10	2'-7 5/16"
3	2	FB2	2'-5 1/4"
4	2	FB1	2'-5 3/16"
5	2	FB4	2'-5 11/16"
6	2	FB6	2'-6 3/8"
7	2	FB8	2'-7"

MARK	WEB DEPTH		WEB PLATE		OUTSIDE FLANGE W x THK x LENGTH	INSIDE FLANGE W x THK x LENGTH
	START/END	THICK	THICK	LENGTH		
RF2-1	1.8/11.1	0.135	4'-11 1/16"	14'-10"	6 x 1/4" x 20'-0"	8 x 1/4" x 19'-3 7/16"
	21.0/21.0	0.188	2'-2 3/16"	14'-10"	5 x 1/4" x 2'-5 5/16"	
RF2-2	21.0/14.4	0.135	14'-10"	5'-8 3/16"	5 x 1/4" x 19'-0 7/8"	5 x 1/4" x 1'-0"
	14.4/12.0	0.135	5'-8 3/16"	1'-0"	5 x 1/4" x 1'-0"	5 x 1/4" x 19'-3 3/4"
RF2-3	12.0/12.1	0.135	1'-0"	14'-10"	5 x 1/4" x 10'-3 3/16"	5 x 1/4" x 10'-3 7/16"
	12.1/14.0	0.135	14'-5"	14'-10"	5 x 1/4" x 20'-0"	5 x 1/4" x 20'-0"
RF2-4	14.0/16.0	0.135	14'-10"	1'-8 13/16"	5 x 1/4" x 2'-0 9/16"	8 x 1/4" x 19'-11 5/8"
	16.0/16.0	0.188	1'-8 13/16"	14'-10"	8 x 1/4" x 1'-5 1/2"	
EB-3	16.0/9.9	0.135	14'-10"	5'-1 1/2"	8 x 1/4" x 1'-5 1/2"	
	9.9/7.7	0.135	5'-1 1/2"	8 x 1/4" x 20'-0"		
RF2-5	B10X18					



RIGID FRAME ELEVATION: FRAME LINE 2 3



STEEL BUILDING SYSTEMS INC.

*** NOTE ***

THIS DRAWING IS FOR ESTIMATING PURPOSES ONLY.

THIS DRAWING IS NOT FOR CONSTRUCTION.

THIS DRAWING IS THE PROPERTY OF STEEL BUILDING SYSTEMS, INC.

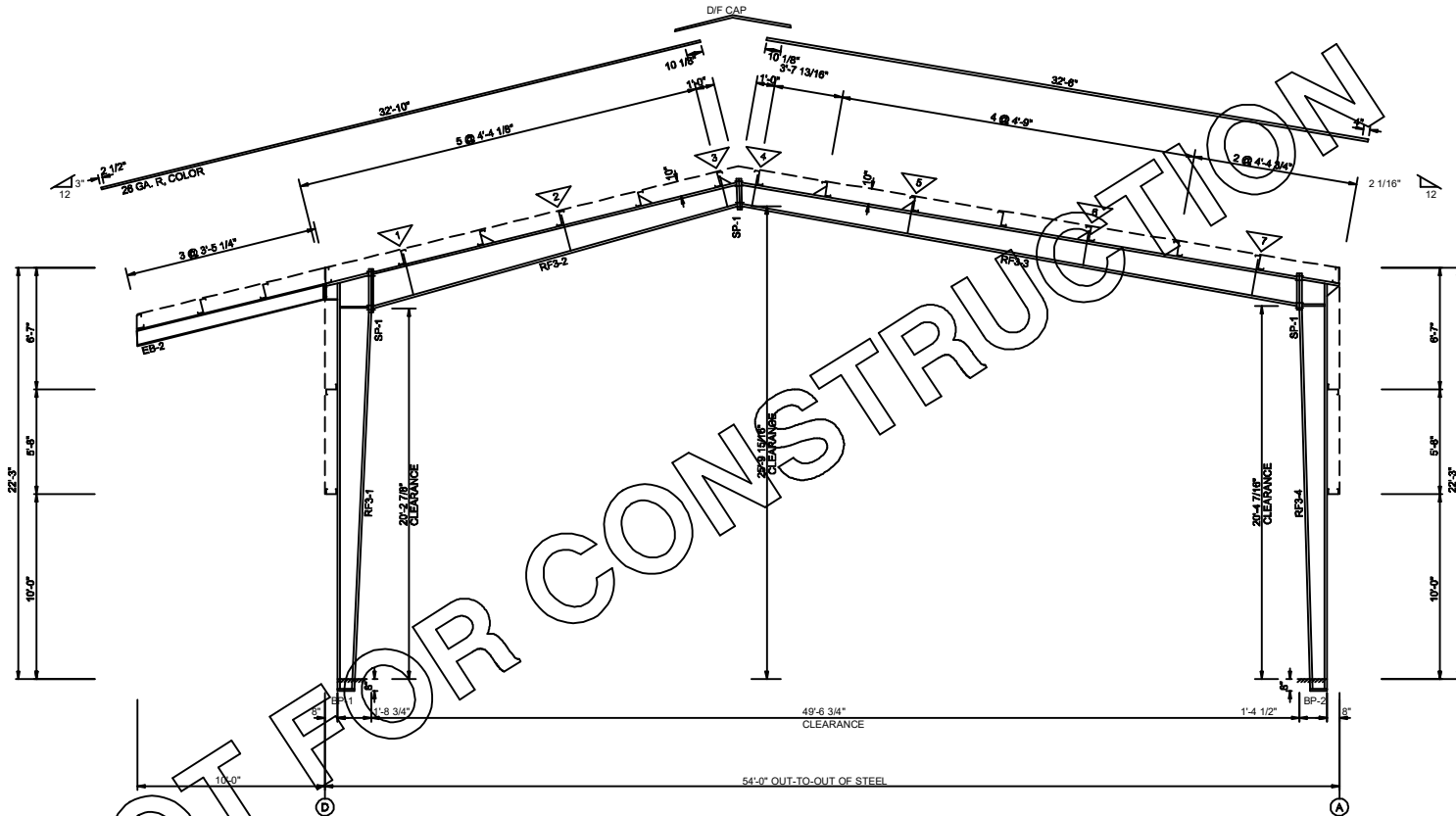
REVISIONS	CUSTOMER: REGAL BOATS	
[1]	JOB NO. BOAT DOCK	DATE: 2/28/23
[2]	LOCATION:	
[3]	DRAWING NAME: RIGID FRAME CROSS SECTION	SCALE: NONE
[4]	DRAWING NO. PAGE 2.2	DRAWN BY: CHECKED BY:

SPLICE BOLT TABLE							
MARK	QTY	TOP	BOT	INT	TYPE	DIA	LENGTH
SP-1	4	4	0	A325	5/8"	2 1/2"	

BASE PLATE TABLE			
COL	PLATE SIZE		
MARK	WIDTH	THICK	LENGTH
BP-1	6"	1/2"	8 1/2"
BP-2	8"	3/8"	8 1/4"

FLANGE BRACE TABLE			
FRAME LINE 4			
#	SIDES	MARK	LENGTH
1	2	FB13	2'-9 1/8"
2	2	FB9	2'-7 1/16"
3	2	FB2	2'-5 1/4"
4	2	FB1	2'-5 3/16"
5	2	FB4	2'-5 11/16"
6	2	FB6	2'-6 3/8"
7	2	FB8	2'-7"

MARK	WEB DEPTH		WEB PLATE		OUTSIDE FLANGE W x THK x LENGTH	INSIDE FLANGE W x THK x LENGTH
	START/END	THICK	LENGTH			
RF3-1	1.7/11.1	0.135	5'-7 7/8"		6 x 1/4" x 20'-0"	6 x 1/2" x 19'-5 1/8"
	20.0/20.0	0.188	2'-1 1/8"		5 x 1/4" x 2'-4 5/16"	6 x 1/2" x 1'-0"
RF3-2	20.0/14.2	0.135	14'-10"		5 x 1/4" x 19'-1 15/16"	5 x 1/4" x 19'-4 1/2"
	14.2/12.0	0.135	5'-9"		5 x 1/4" x 1'-0"	5 x 1/4" x 1'-0"
RF3-3	12.0/12.1	0.135	1'-0"		5 x 1/4" x 10'-3 3/16"	5 x 1/4" x 10'-3 7/16"
	12.1/14.0	0.135	14'-5"		5 x 1/4" x 20'-0"	5 x 1/4" x 20'-0"
RF3-4	14.0/16.0	0.135	14'-10"		5 x 1/4" x 2'-0 9/16"	8 x 1/4" x 1'-0"
	16.0/10.1	0.135	14'-10"		8 x 1/4" x 2'-1 5/8"	8 x 1/4" x 19'-7 3/4"
EB-2	B10X18	0.135	5'-9 5/8"		8 x 1/4" x 20'-0"	



RIGID FRAME ELEVATION: FRAME LINE 4



STEEL BUILDING SYSTEMS INC.

REVISIONS	CUSTOMER: REGAL BOATS	
[1]	JOB NO. BOAT DOCK	DATE: 2/28/23
[2]	LOCATION:	
[3]	DRAWING NAME: RIGID FRAME CROSS SECTION	
[4]	DRAWING NO. PAGE 2.3	DRAWN BY: _____ CHECKED BY: _____

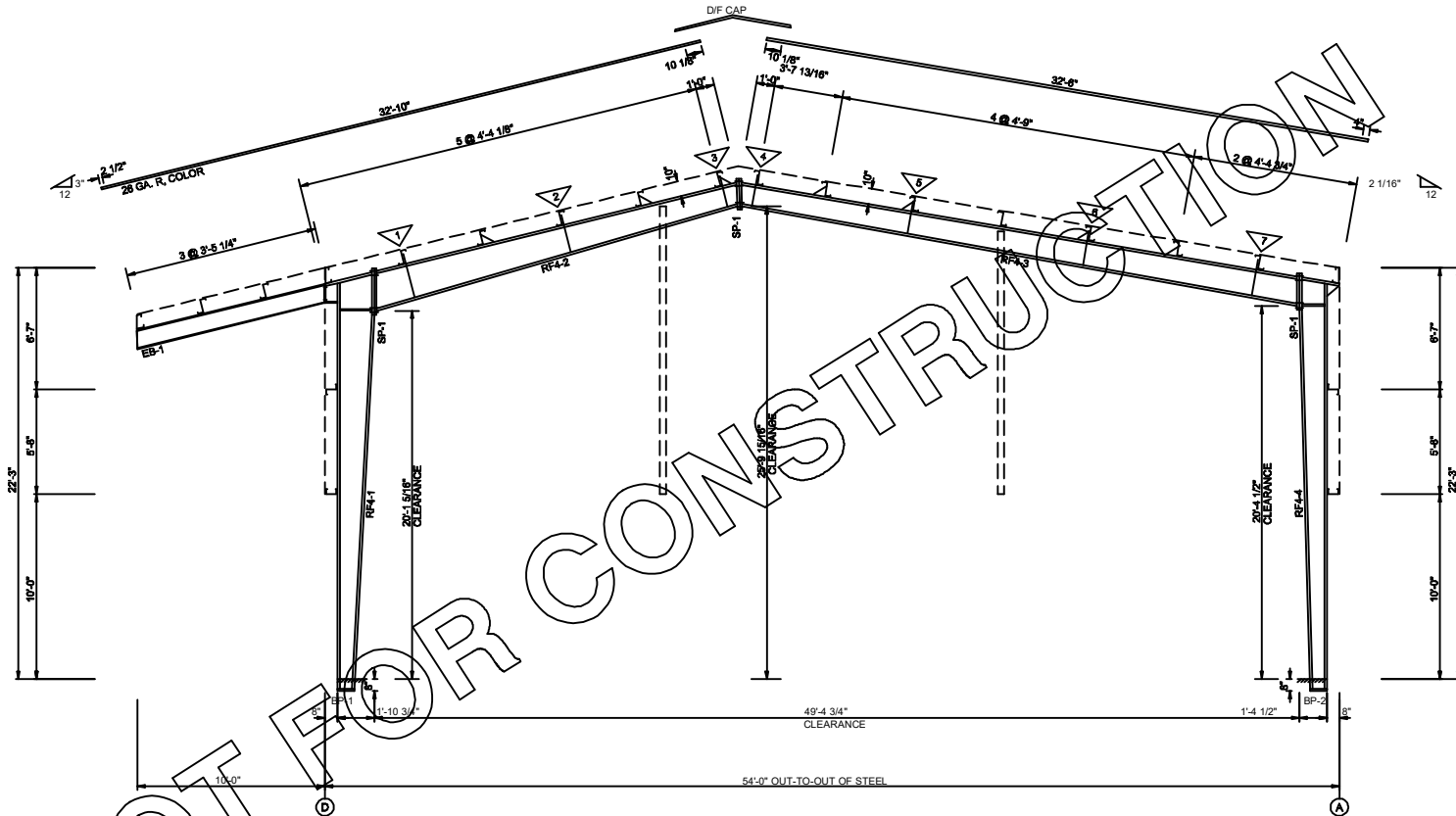
*** NOTE ***
 THIS DRAWING IS FOR ESTIMATING PURPOSES ONLY.
 THIS DRAWING IS NOT FOR CONSTRUCTION.
 THIS DRAWING IS THE PROPERTY OF STEEL BUILDING SYSTEMS, INC.

SPLICE BOLT TABLE							
MARK	QTY	TOP	BOT	INT	TYPE	DIA	LENGTH
SP-1	4	4	0	0	A325	5/8"	2 1/2"

BASE PLATE TABLE			
COL	PLATE SIZE		
MARK	WIDTH	THICK	LENGTH
BP-1	6"	1/2"	8 1/2"
BP-2	8"	3/8"	8 1/4"

FLANGE BRACE TABLE		
#	MARK	LENGTH
1	FB15	2'-10 5/16"
2	FB12	2'-7 5/8"
3	FB3	2'-5 5/16"
4	FB1	2'-5 3/16"
5	FB4	2'-5 11/16"
6	FB6	2'-6 3/8"
7	FB8	2'-7"

MARK	WEB DEPTH		WEB PLATE		OUTSIDE FLANGE W x THK x LENGTH	INSIDE FLANGE W x THK x LENGTH
	START/END	THICK	LENGTH			
RF4-1	1.8/11.6	0.135	5'-9 5/16"		6 x 1/4" x 20'-0"	6 x 1/2" x 19'-4 11/16"
	22.0/22.0	0.188	2'-3 3/16"		5 x 1/4" x 2'-6 5/8"	6 x 1/2" x 1'-0"
RF4-2	22.0/14.7	0.135	14'-10"		5 x 1/4" x 19'-11 7/8"	5 x 1/4" x 19'-3"
	14.7/12.0	0.135	5'-7 7/16"		5 x 1/4" x 20'-0"	5 x 1/4" x 1'-0"
RF4-3	12.0/12.1	0.135	1'-0"		5 x 1/4" x 10'-2 15/16"	5 x 1/4" x 10'-3 3/16"
	12.1/14.0	0.135	14'-7 3/4"		5 x 1/4" x 20'-0"	5 x 1/4" x 20'-0"
RF4-4	14.0/16.0	0.135	14'-10"		5 x 1/4" x 2'-0 9/16"	8 x 1/4" x 1'-0"
	16.0/16.0	0.188	1'-8 3/4"		8 x 1/4" x 2'-1 5/8"	8 x 1/4" x 19'-7 3/4"
EB-1	16.0/10.1	0.135	14'-10"		8 x 1/4" x 20'-0"	
	10.1/7.7	0.135	5'-9 5/8"			



RIGID FRAME ELEVATION: FRAME LINE 5

SBS
STEEL BUILDING SYSTEMS INC.

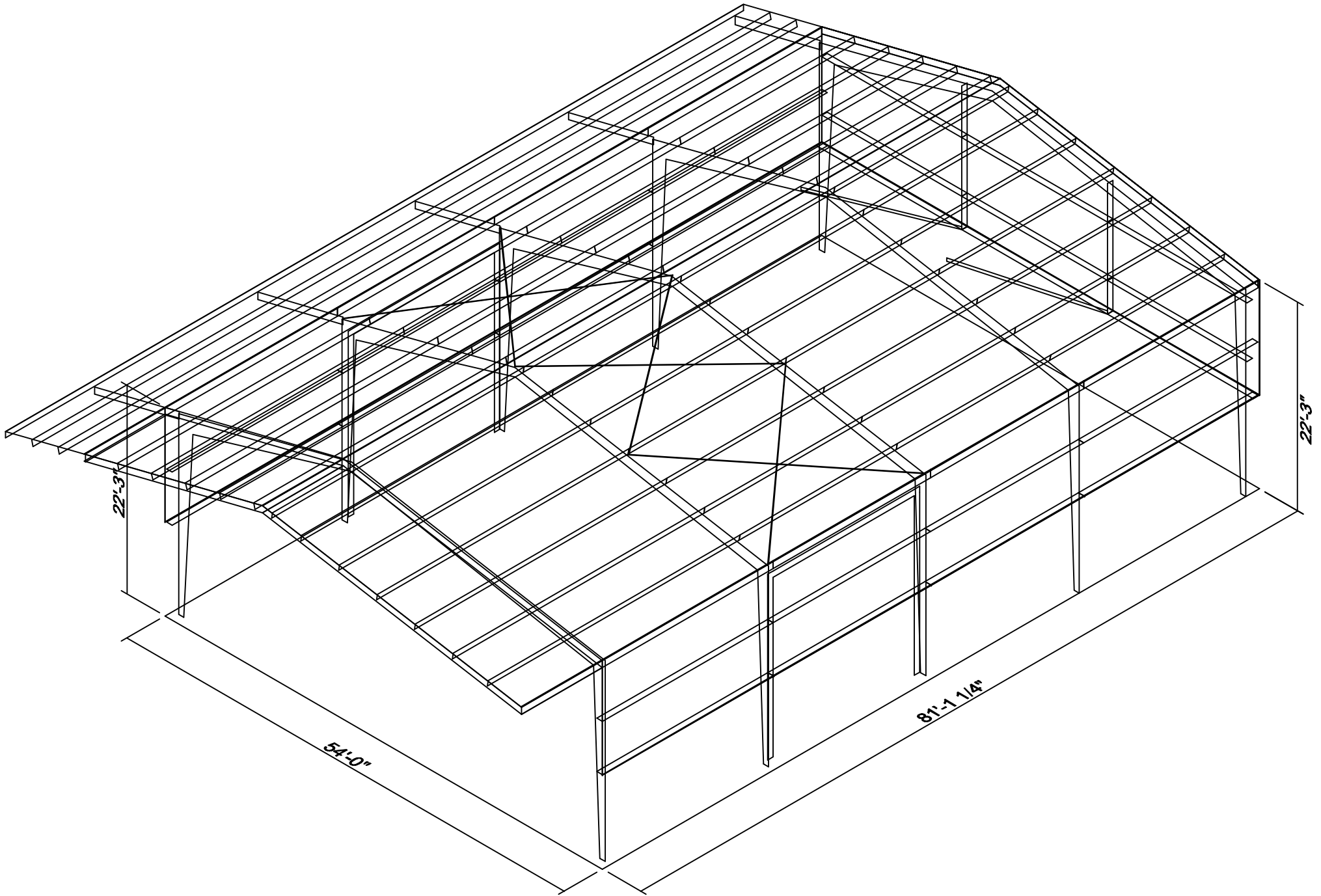
REVISIONS	CUSTOMER: REGAL BOATS	
[1]	JOB NO: BOAT DOCK	DATE: 2/28/23
[2]	LOCATION:	
[3]	DRAWING NAME: RIGID FRAME CROSS SECTION	
[4]	DRAWING NO: PAGE 2.4	DRAWN BY: _____ CHECKED BY: _____

*** NOTE ***

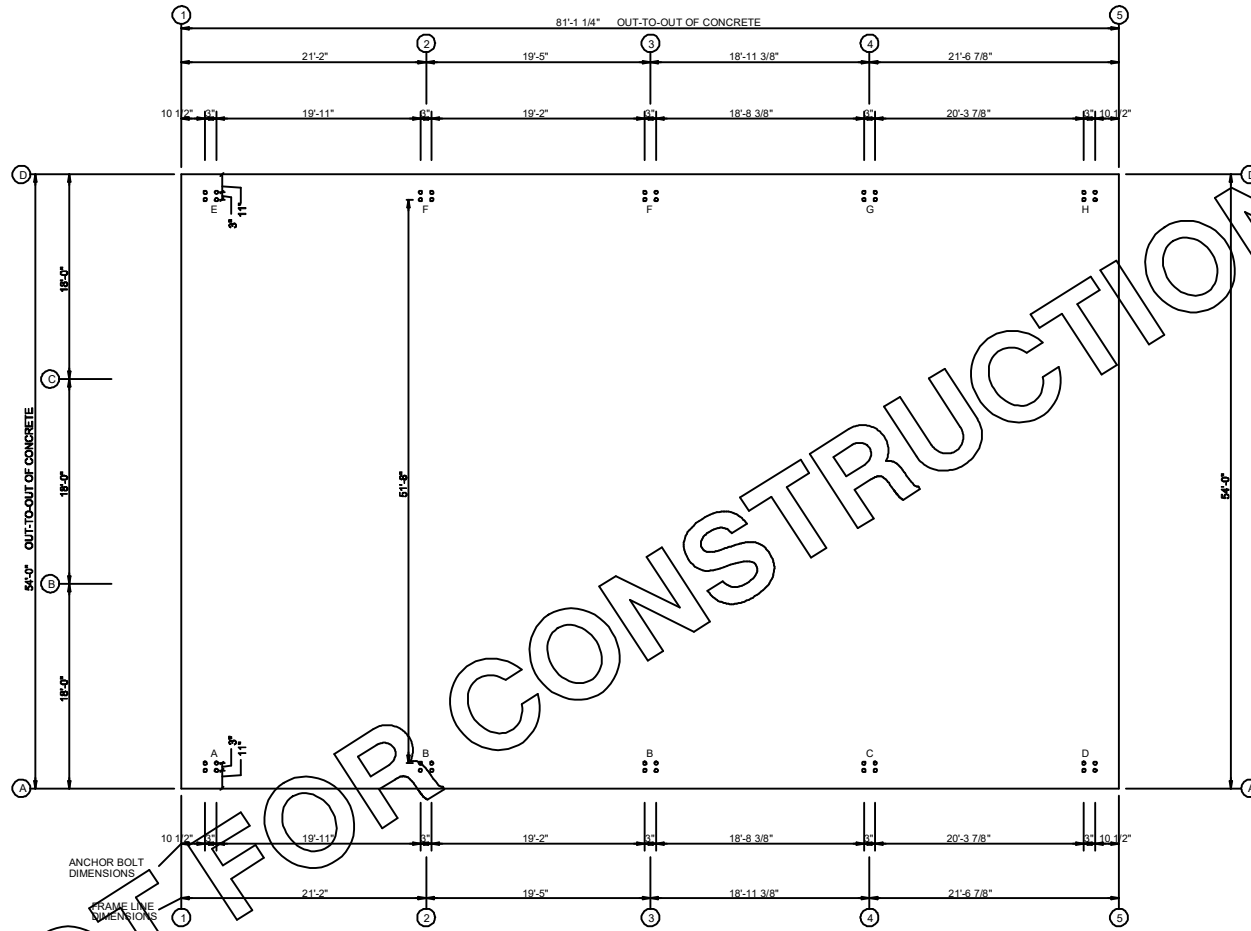
THIS DRAWING IS FOR ESTIMATING PURPOSES ONLY.

THIS DRAWING IS NOT FOR CONSTRUCTION.

THIS DRAWING IS THE PROPERTY OF STEEL BUILDING SYSTEMS, INC.



○ DIA= 3/4"



ANCHOR BOLT DIMENSIONS
 FRAME LINE DIMENSIONS

ANCHOR BOLT PLAN
 NOTE: ALL BASE PLATES @ 100'-0" (UNLESS NOTED)

NOT FOR CONSTRUCTION

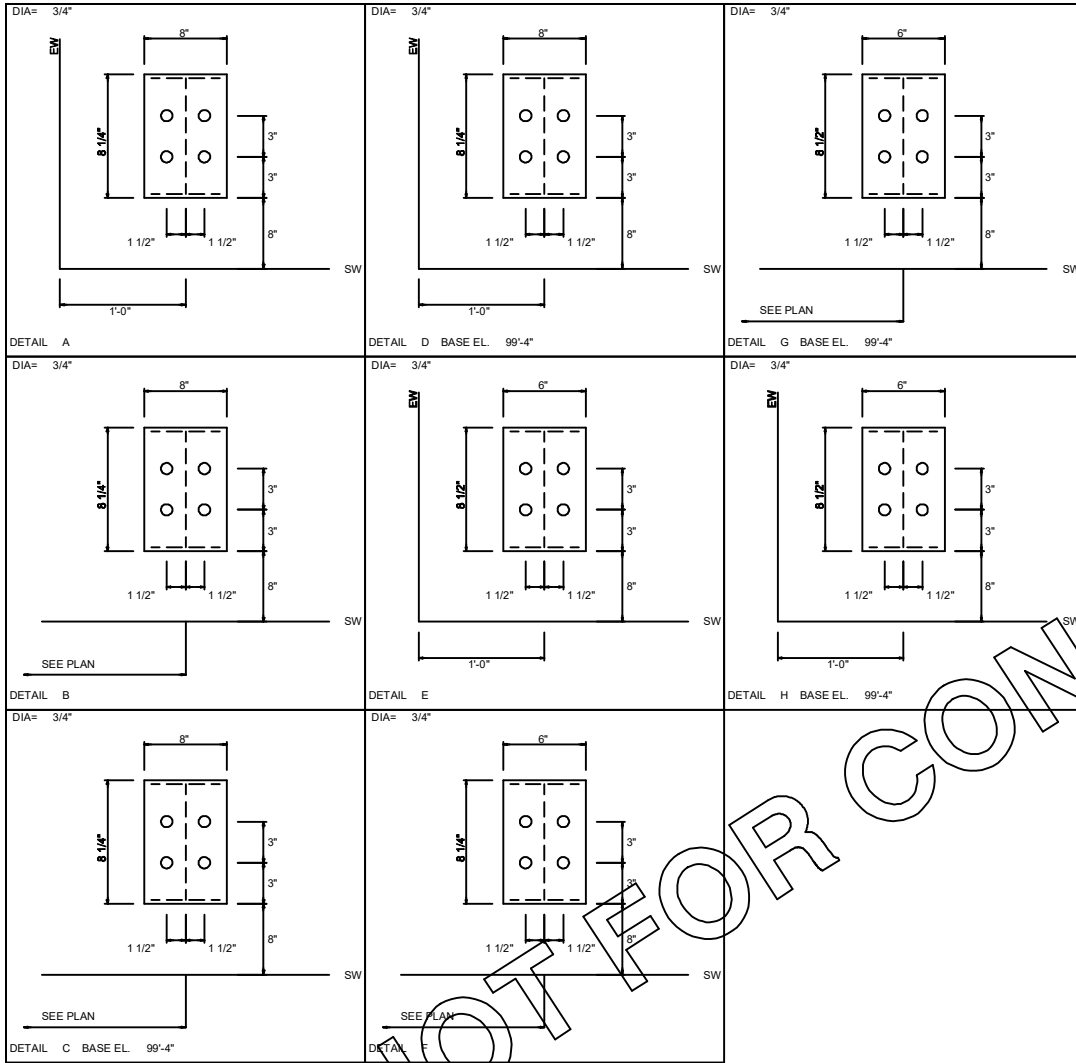
SBS	
STEEL BUILDING SYSTEMS INC.	
REVISIONS	CUSTOMER: REGAL BOATS
[1]	JOB NO: BOAT DOCK DATE: 2/28/23
[2]	LOCATION:
[3]	DRAWING NAME: ANCHOR BOLT LAYOUT SCALE: NONE
[4]	DRAWING NO: PAGE 1 DRAWN BY: CHECKED BY:

*** NOTE ***

THIS DRAWING IS FOR ESTIMATING PURPOSES ONLY.

THIS DRAWING IS NOT FOR CONSTRUCTION.

THIS DRAWING IS THE PROPERTY OF STEEL BUILDING SYSTEMS, INC.



NOT FOR CONSTRUCTION

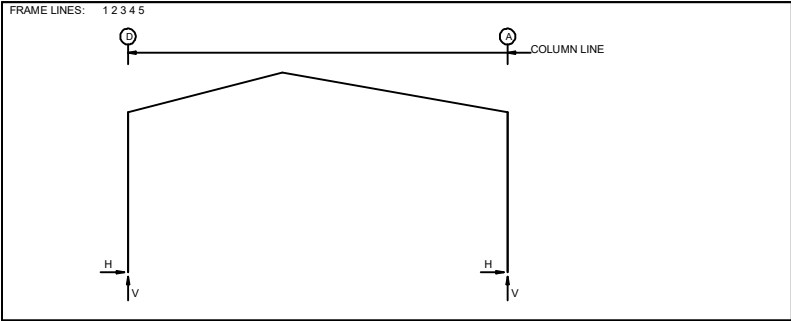
SBS	
STEEL BUILDING SYSTEMS INC.	
REVISIONS	CUSTOMER: REGAL BOATS
[1]	JOB NO.: BOAT DOCK DATE: 2/28/23
[2]	LOCATION:
[3]	DRAWING NAME: ANCHOR BOLT DETAILS SCALE: NONE
[4]	DRAWING NO.: PAGE 1.1 DRAWN BY: CHECKED BY:

*** NOTE ***

THIS DRAWING IS FOR ESTIMATING PURPOSES ONLY.

THIS DRAWING IS NOT FOR CONSTRUCTION.

THIS DRAWING IS THE PROPERTY OF STEEL BUILDING SYSTEMS, INC.



RIGID FRAME: BASIC COLUMN REACTIONS (k)

FRAME LINE	COLUMN LINE	---Dead---		---Collateral---		---Live---		---Wind_Left1---		---Wind_Right1---		---Wind_Left2---	
		HORIZ	VERT	HORIZ	VERT	HORIZ	VERT	HORIZ	VERT	HORIZ	VERT	HORIZ	VERT
1	D	0.5	2.6	0.4	1.2	2.1	12.1	-6.0	-22.8	2.5	-11.6	-6.4	-16.8
1	A	-0.5	2.0	-0.4	1.2	-2.1	6.6	-1.6	-8.4	8.8	-15.7	-1.2	-2.4
2*	D	0.5	2.4	0.4	1.2	2.0	11.3	-5.8	-21.5	2.4	-11.0	-6.2	-15.8
2*	A	-0.5	1.9	-0.4	1.2	-2.0	6.3	-1.6	-8.1	8.4	-15.0	-1.1	-2.3
4	D	0.5	2.5	0.4	1.2	1.9	11.3	-5.8	-21.6	2.7	-10.9	-6.3	-15.9
4	A	-0.5	1.9	-0.4	1.2	-1.9	6.3	-1.8	-7.9	8.4	-15.1	-1.3	-2.2
5	D	0.8	3.4	0.4	1.2	2.0	11.7	-5.8	-21.9	2.8	-11.0	-6.3	-16.2
5	A	-0.8	2.8	-0.4	1.2	-2.0	6.5	-1.8	-7.9	8.4	-15.1	-1.2	-2.2

FRAME LINE	COLUMN LINE	---Wind_Right2---		---Wind_Long1---		---Wind_Long2---		---Seismic_Left---		---Seismic_Right---		---Seismic_Long---	
		HORIZ	VERT	HORIZ	VERT	HORIZ	VERT	HORIZ	VERT	HORIZ	VERT	HORIZ	VERT
1	D	2.0	-5.6	1.1	-12.2	-0.6	-11.5	-0.1	-0.1	0.1	0.1	0.0	0.0
1	A	9.3	-9.7	0.0	-10.5	-0.5	-13.1	-0.1	0.1	0.1	-0.1	0.0	0.0
2*	D	2.0	-5.3	1.1	-21.9	-0.5	-21.3	-0.1	-0.1	0.1	0.1	0.0	-0.4
2*	A	8.8	-9.3	-0.1	-17.5	-0.5	-20.0	-0.1	0.1	0.1	-0.1	0.0	-0.4
4	D	2.2	-5.2	1.3	-11.6	-0.3	-11.0	-0.1	-0.1	0.1	0.1	0.0	0.0
4	A	8.9	-9.4	-0.3	-10.0	-0.8	-12.5	-0.1	0.1	0.1	-0.1	0.0	0.0
5	D	2.2	-5.2	1.3	-11.6	-0.3	-11.0	-0.1	-0.1	0.1	0.1	0.0	0.0
5	A	8.9	-9.4	-0.3	-10.0	-0.7	-12.5	-0.1	0.1	0.1	-0.1	0.0	0.0

2* FRAME LINES: 2 3

RIGID FRAME: MAXIMUM REACTIONS, ANCHOR BOLTS, & BASE PLATES

FRM LINE	COL LINE	Column_Reactions(k)						Bolt(N) QTY	DIA	BASE_PLATE(IN)			ELEV. (in)
		LOAD Id	HMAX H	V VMAX	LOAD Id	HMIN H	V VMIN			WIDTH	LENGTH	THICK	
1	D	3	3.7	7.6	6	-3.5	-8.5	4	0.750	6.000	8.500	0.500	0.0
1	A	7	5.2	-4.6	2	-3.3	4.3	4	0.750	8.000	8.250	0.375	0.0
1		1	-3.1	9.8	5	5.0	-8.2						

ANCHOR BOLT SUMMARY

QTY	LOCATE	DIA (in)	TYPE	PRGJ.	
0	40	FRAME	3/4"	F1554	2.50

GENERAL NOTES

RIGID FRAME: MAXIMUM REACTIONS, ANCHOR BOLTS, & BASE PLATES

FRM LINE	COL LINE	Column_Reactions(k)						Bolt(N) QTY	DIA	BASE_PLATE(IN)			ELEV. (in)
		LOAD Id	HMAX H	V VMAX	LOAD Id	HMIN H	V VMIN			WIDTH	LENGTH	THICK	
2*	D	3	3.5	7.1	6	-3.4	-8.0	4	0.750	6.000	8.250	0.500	0.0
2*	A	7	5.0	-4.4	2	-3.1	4.2	4	0.750	8.000	8.250	0.500	0.0
2*		1	-2.9	9.4	9	-0.6	-10.9						

2* FRAME LINES: 2 3

BUILDING BRACING REACTIONS

LOC	WALL LINE	COL LINE	+ Reactions(k)				Panel Shear (lb/ft)	
			WIND HORZ	SEISMIC VERT	WIND VERT	SEISMIC HORZ	WIND	SEIS
L_EW	1							(h)
F_SW	A	2,3	3.5	7.5	0.2	0.4		(b)
R_EW	5							(h)
B_SW	D	2,3	4.9	10.3	0.2	0.4		(b)

(b) Wind bent in bay, base above finish floor
(h) Rigid frame at endwall

RIGID FRAME: MAXIMUM REACTIONS, ANCHOR BOLTS, & BASE PLATES

FRM LINE	COL LINE	Column_Reactions(k)						Bolt(N) QTY	DIA	BASE_PLATE(IN)			ELEV. (in)
		LOAD Id	HMAX H	V VMAX	LOAD Id	HMIN H	V VMIN			WIDTH	LENGTH	THICK	
4	D	3	3.6	7.3	6	-3.5	-8.0	4	0.750	6.000	8.500	0.500	-8.0
4	A	7	5.1	-4.5	2	-3.2	4.2	4	0.750	8.000	8.250	0.375	-8.0
4		1	-2.8	9.4	5	4.7	-7.9						

RIGID FRAME: MAXIMUM REACTIONS, ANCHOR BOLTS, & BASE PLATES

FRM LINE	COL LINE	Column_Reactions(k)						Bolt(N) QTY	DIA	BASE_PLATE(IN)			ELEV. (in)
		LOAD Id	HMAX H	V VMAX	LOAD Id	HMIN H	V VMIN			WIDTH	LENGTH	THICK	
5	D	3	4.0	8.4	6	-3.3	-7.6	4	0.750	6.000	8.500	0.500	-8.0
5	A	7	4.8	-4.0	2	-3.5	5.2	4	0.750	8.000	8.250	0.375	-8.0
5		1	-3.3	10.4	5	4.5	-7.4						

- NOTES FOR REACTIONS**
- ALL LOADING CONDITIONS ARE EXAMINED AND ONLY MAXIMUM/MINIMUM H OR V AND THE CORRESPONDING H or V ARE REPORTED.
 - POSITIVE REACTIONS ARE AS SHOWN IN THE SKETCH. FOUNDATION LOADS ARE IN OPPOSITE DIRECTIONS.
 - BRACING REACTIONS ARE IN THE PLANE OF THE BRACE WITH THE H POINTING AWAY FROM THE BRACE BAY. THE VERTICAL REACTION IS DOWNWARD.
 - BUILDING REACTIONS ARE BASED ON THE FOLLOWING BUILDING DATA:
 - WIDTH (ft) = 54.0
 - LENGTH (ft) = 81.1
 - EAVE HEIGHT (ft) = 22.3/22.3
 - ROOF SLOPE (RISE/12) = 3.0/ 2.1
 - DEAD LOAD (psf) = 2.0
 - COLLATERAL LOAD (psf) = 2.0
 - ROOF LIVE LOAD (psf) = 20.0
 - FRAME LIVE LOAD Min(psf) = 12.0
 - Max(psf) = 12.4
 - WIND SPEED (mph) = 136.0
 - WIND CODE = FBC 20 (IBC 18)
 - EXPOSURE = B
 - CLOSED/OPEN/PARTIAL = C
 - IMPORTANCE WIND = 1.00
 - IMPORTANCE SEISMIC = 1.00
 - SEISMIC Zone = A
 - SEISMIC COEFF (Fa/Ss) = 0.10
 - LOADING CONDITIONS ARE:
 - 1 Dead+Collateral+Live
 - 2 Dead+Collateral+0.75Live+0.45Wind_Left1
 - 3 Dead+Collateral+0.75Live+0.45Wind_Right1
 - 4 0.6Dead+0.6Wind_Left1
 - 5 0.6Dead+0.6Wind_Right1
 - 6 0.6Dead+0.6Wind_Left2
 - 7 0.6Dead+0.6Wind_Right2
 - 8 0.6Dead+0.6Wind_Long1L
 - 9 0.6Dead+0.6Wind_Long2L

*** NOTE ***

THIS DRAWING IS FOR ESTIMATING PURPOSES ONLY.

THIS DRAWING IS NOT FOR CONSTRUCTION.

THIS DRAWING IS THE PROPERTY OF STEEL BUILDING SYSTEMS, INC.

REVISIONS		CUSTOMER: REGAL BOATS	
[1]		JOB NO: BOAT DOCK	DATE: 2/28/23
[2]		LOCATION:	
[3]		DRAWING NAME: ANCHOR BOLT REACTIONS	SCALE: NONE
[4]		DRAWING NO: PAGE 1.2	DRAWN BY: CHECKED BY:

